

Respiratory Virus Report, Week 13 - ending March 28, 2020

The Respiratory Virus Detection Surveillance System collects data from select laboratories across Canada on the number of tests performed and the number of tests positive for influenza and other respiratory viruses. Data are reported on a weekly basis year-round to the Centre for Immunization and Respiratory Infectious Diseases (CIRID), Public Health Agency of Canada. These data are also summarized in the weekly FluWatch report.

In this Respiratory Virus Report, the number of detections of coronavirus reflects only seasonal human coronaviruses, not the novel pandemic coronavirus (SARS-CoV2) that causes COVID-19. For information on COVID-19, see the [Coronavirus disease \(COVID-19\): Outbreak](#)

Table 1: Respiratory Virus Detections/Isolations for the week ending March 28, 2020 (Reporting Week 202013)

Reporting Laboratory	Flu Tested	A(H1N1)pdm09 Positive	A(H3) Positive	A(UnS) Positive	Total Flu A Positive	Total Flu B Positive	RSV Tested	RSV Positive	PIV Tested	PIV 1 Positive	PIV 2 Positive	PIV 3 Positive	PIV 4 Positive	Other PIV Positive	Adeno Tested	Adeno Positive	hMPV Tested	hMPV Positive	Entero/Rhino Tested	Entero/Rhino Positive	Coron Tested	Coron Positive
Newfoundland	1269	0	0	24	24	40	1269	16	1269	3	0	3	0	0	1269	11	1269	31	1269	14	N.A.	N.A.
Prince Edward Island	68	0	0	9	9	2	68	9	0	0	0	0	0	0	0	0	0	0	0	0	0	0
Nova Scotia	966	0	0	22	22	28	966	103	8	0	0	0	0	0	8	0	4	0	8	0	8	0
New Brunswick	407	0	0	11	11	13	407	15	32	0	0	0	1	0	32	0	32	0	32	2	1706	42
Atlantic	2710	0	0	66	66	83	2710	143	1309	3	0	3	1	0	1309	11	1305	31	1309	16	1714	42
Région Nord-Est	208	0	0	11	11	0	192	18	0	0	0	0	0	0	0	0	0	0	N.A.	N.A.	0	0
Québec-Chaudière-Appalaches	30	0	0	0	0	0	30	3	0	0	0	0	0	0	0	0	0	0	N.A.	N.A.	0	0
Centre-du-Québec	211	0	0	1	1	0	172	7	0	0	0	0	0	0	0	0	0	0	N.A.	N.A.	0	0
Montréal-Laval	636	0	0	14	14	3	636	18	69	0	0	1	0	0	69	0	69	2	N.A.	N.A.	69	0
Ouest du Québec	187	0	0	4	4	0	144	7	0	0	0	0	0	0	0	0	0	0	N.A.	N.A.	0	0
Montérégie	7	0	0	0	0	0	7	0	0	0	0	0	0	0	0	0	0	0	N.A.	N.A.	0	0
Province of Québec	1279	0	0	30	30	3	1181	53	69	0	0	1	0	0	69	0	69	2	N.A.	N.A.	69	0
P.H.O.L. - Ottawa	93	0	0	0	0	0	93	6	93	0	0	0	0	0	93	0	92	9	93	3	92	0
CHEO - Ottawa	391	0	0	1	1	15	391	18	27	1	0	1	0	0	27	0	27	1	27	1	27	4
P.H.O.L. - Kingston	57	0	1	2	3	2	52	4	52	0	0	0	0	0	52	0	52	4	52	1	52	0
UHN / Mount Sinai Hospital	0	0	0	0	0	0	0	0	0	0	0	0	0	0	0	0	0	0	0	0	N.A.	N.A.
P.H.O.L. - Toronto	683	5	3	0	8	2	678	7	678	0	0	0	0	0	678	5	666	47	678	33	666	0
Sick Kids Hospital - Toronto	0	0	0	0	0	0	0	0	0	0	0	0	0	0	0	0	0	0	0	0	0	0
Sunnybrook & Women's College HSC	0	0	0	0	0	0	0	0	0	0	0	0	0	0	0	0	0	0	0	0	0	0
P.H.O.L. - Sault Ste. Marie	7	1	0	0	1	0	7	0	7	0	0	0	0	0	7	0	7	0	7	1	7	0
P.H.O.L. - Timmins	21	0	0	0	0	1	21	4	21	0	0	0	0	0	21	0	21	1	21	0	21	0
St. Joseph's - London	306	0	0	2	2	2	306	8	76	0	0	0	0	0	76	1	76	2	24	3	24	0
P.H.O.L. - London	232	1	1	0	2	4	232	11	232	0	0	0	0	0	232	1	230	17	232	13	230	0
P.H.O.L. - Orillia	38	0	0	0	0	0	26	0	26	0	0	0	0	0	26	0	25	2	26	0	25	0
P.H.O.L. - Thunder Bay	24	1	2	0	3	0	24	3	24	0	0	0	0	0	24	1	24	3	24	2	24	0
P.H.O.L. - Sudbury	14	0	0	0	0	0	13	2	13	0	0	0	0	0	13	0	13	1	13	0	13	0
P.H.O.L. - Hamilton	147	0	3	0	3	0	147	1	147	0	0	0	0	0	147	0	147	10	147	10	147	0
P.H.O.L. - Peterborough	44	3	0	0	3	0	43	2	43	0	0	0	0	0	43	0	43	1	43	0	43	0
St. Joseph's - Hamilton	2919	0	0	21	21	37	2919	42	2919	3	0	2	0	0	2919	12	2919	68	2919	145	0	0
Province of Ontario	4976	11	10	26	47	63	4952	108	4358	4	0	3	0	0	4358	20	4342	166	4306	212	1371	4
Province of Manitoba	0	0	0	0	0	0	0	0	0	0	0	0	0	0	0	0	0	0	0	0	0	0
Regina	487	0	0	8	8	1	487	56	8	0	0	0	0	0	8	0	8	0	8	2	8	0
Saskatoon	0	0	0	0	0	0	0	0	0	0	0	0	0	0	0	0	0	0	0	0	0	0
Province of Saskatchewan	487	0	0	8	8	1	487	56	8	0	0	0	0	0	8	0	8	0	8	2	8	0
Province of Alberta	2622	19	5	0	24	23	2622	0	2622	6	3	4	8	0	2622	28	2622	101	2622	154	2622	114
Prairies	3109	19	5	8	32	24	3109	56	2630	6	3	4	8	0	2630	28	2630	101	2630	156	2630	114
British Columbia	8208	0	0	53	89	74	8201	162	1747	1	0	0	0	10	1747	7	1747	51	1704	86	146	9
Yukon	890	0	0	3	3	6	890	4	N.A.	N.A.	N.A.	N.A.	N.A.	N.A.	N.A.	N.A.	N.A.	N.A.	N.A.	N.A.	N.A.	N.A.
Northwest Territories	67	3	2	0	5	8	67	0	67	1	0	1	0	0	67	0	67	1	67	4	67	4
Nunavut	60	0	0	1	1	5	60	4	60	3	0	0	0	0	60	0	60	3	60	7	3	0
Territories	1017	3	2	4	9	19	1017	8	127	4	0	1	0	0	127	0	127	4	127	11	70	4
CANADA	21299	33	17	187	273	266	21170	530	10240	18	3	12	9	10	10240	66	10220	355	10076	481	6000	173

Specimens from Yukon (YT), Northwest Territories (NT) and Nunavut (NU) are sent to reference laboratories in other provinces and reported results reflect specimens identified as originating from YT, NT or NU.

Results from British Columbia comprise of specimens from the following sites: BC Children's and Women's Hospital, Children's and Women's Hospital Laboratory, Fraser Health Medical Microbiology Laboratory, Island Health, Providence Health Care, Powell River Hospital, St. Paul's Hospital, Vancouver General Hospital, Victoria General Hospital, Victoria Coastal Health, BCCDC Public Health Laboratory, Interior Health Authority sites and Northern Health Authority sites.

Delays in the reporting of data may cause data to change retrospectively.

For BC, only data from subtyped influenza A specimens are included in the weekly number of influenza detections and so the sum of A(H1N1)pdm09, A(H3), and A(UnS) positive results may not equal the sum of total Flu A positive results.

Table 2: Respiratory Virus Detections/Isolations for the period August 31, 2019 - March 28, 2020 (Reporting Weeks 201935-202013)

Reporting Laboratory	Flu Tested	A(H1N1)pdm09 Positive	A(H3) Positive	A(UnS) Positive	Total Flu A Positive	Total Flu B Positive	RSV Tested	RSV Positive	PIV Tested	PIV 1 Positive	PIV 2 Positive	PIV 3 Positive	PIV 4 Positive	Other PIV Positive	Adeno Tested	Adeno Positive	hMPV Tested	hMPV Positive	Entero/Rhino Tested	Entero/Rhino Positive	Coron Tested	Coron Positive
Newfoundland	5564	8	33	159	200	491	5564	291	5564	137	1	9	0	0	5564	102	5564	143	5564	332	N.A.	N.A.
Prince Edward Island	1100	0	0	144	144	78	1100	140	47	1	0	0	1	0	47	0	45	0	47	16	47	1
Nova Scotia	4315	3	2	190	195	238	4405	550	507	13	1	3	5	0	541	10	537	11	541	76	551	14
New Brunswick	11087	60	29	956	1045	1292	11028	1072	2221	50	6	0	13	0	2221	62	2221	16	2221	284	3895	111
Atlantic	22066	71	64	1449	1584	2099	22097	2053	8339	201	8	12	19	0	8373	174	8367	170	8373	708	4493	126
Région Nord-Est	8563	0	0	1125	1125	1322	7307	632	0	0	0	0	0	0	0	0	0	0	N.A.	N.A.	0	0
Québec-Chaudière-Appalaches	13861	0	0	1899	1899	1828	13687	1317	2602	31	4	3	14	0	2654	79	2058	22	N.A.	N.A.	2004	34
Centre-du-Québec	18479	0	0	2908	2908	2395	14835	1366	0	0	0	0	0	0	0	0	0	0	N.A.	N.A.	0	0
Montréal-Laval	36757	0	0	4018	4018	2411	35600	2378	16558	144	4	34	13	0	16558	513	16095	270	N.A.	N.A.	16405	260
Ouest du Québec	12076	0	0	1744	1744	1278	11247	1085	0	0	0	0	0	0	0	0	0	0	N.A.	N.A.	0	0
Montérégie	8504	0	0	1133	1133	791	8276	610	0	0	0	0	0	0	0	0	0	0	N.A.	N.A.	0	0
Province of Québec	98240	0	0	12827	12827	10025	90952	7388	19160	175	8	37	27	0	19212	592	18153	292	N.A.	N.A.	18409	294
P.H.O.L. - Ottawa	1289	108	60	2	170	71	1280	77	1255	2	0	0	0	0	1255	15	1242	44	1099	72	1085	0
CHEO - Ottawa	7828	1	0	650	651	405	7828	666	830	17	0	5	10	5	830	17	830	20	833	155	821	27
P.H.O.L. - Kingston	868	62	23	4	89	20	848	60	844	1	0	0	0	0	844	16	835	49	675	59	662	0
UHN / Mount Sinai Hospital	11085	9	0	651	660	218	11085	348	540	7	2	10	2	0	0	0	538	10	0	0	N.A.	N.A.
P.H.O.L. - Toronto	14107	1345	144	36	1525	355	13648	399	13569	34	0	3	0	0	13569	145	13355	384	11025	744	10791	0
Sick Kids Hospital - Toronto	2078	103	13	99	215	167	1607	203	1607	26	5	5	27	0	1607	41	1607	38	1607	327	1607	75
Sunnybrook & Women's College HSC	1611	0	0	124	124	24	1611	47	1611	8	0	9	0	0	1352	5	1471	21	1471	51	120	0
P.H.O.L. - Sault Ste. Marie	362	19	0	0	19	8	362	21	362	1	0	0	0	0	362	4	360	20	311	14	309	0
P.H.O.L. - Timmins	333	65	3	2	70	12	302	21	304	0	0	0	0	0	304	0	301	22	276	4	271	0
St. Joseph's - London	3779	0	0	237	237	113	3779	330	1232	19	4	3	14	0	1232	23	1232	33	638	106	617	19
P.H.O.L. - London	3813	309	112	4	425	142	3784	235	3770	8	0	0	0	0	3770	44	3733	145	3314	274	3265	0
P.H.O.L. - Orillia	1268	81	31	3	115	32	1256	82	1253	4	0	0	0	0	1253	8	1248	39	1062	68	1055	0
P.H.O.L. - Thunder Bay	542	80	16	8	104	43	540	32	540	0	0	1	0	0	540	11	529	29	492	32	480	0
P.H.O.L. - Sudbury	547	29	14	4	47	15	541	43	541	0	0	1	0	0	541	9	531	11	469	22	458	0
P.H.O.L. - Hamilton	3799	286	39	9	334	117	3685	153	3666	10	1	0	0	0	3666	67	3647	121	3071	304	3048	0
P.H.O.L. - Peterborough	981	66	4	1	71	10	977	31	976	3	0	0	0	0	975	9	971	43	721	60	714	0
St. Joseph's - Hamilton	15776	0	0	1612	1612	802	15776	1200	15776	114	6	24	0	0	15776	253	15776	401	15776	1112	0	0
Province of Ontario	70066	2563	459	3446	6468	2554	68909	3948	48676	254	18	61	53	5	47876	667	48206	1430	42840	3404	25303	121
Manitoba	13753	174	134	1329	1637	883	13360	868	3393	45	8	4	8	0	3393	55	2365	44	3393	478	2365	76
Regina	11040	43	26	1187	1256	662	11049	990	4485	148	11	6	27	0	4485	79	4408	184	4485	772	4485	144
Saskatoon	4455	0	0	318	318	235	4455	182	4519	98	12	6	7	0	4519	66	4522	27	4519	530	4519	45
Province of Saskatchewan	15495	43	26	1505	1574	897	15504	1172	9004	246	23	12	34	0	9004	145	8930	211	9004	1302	9004	189
Province of Alberta	41524	1721	1285	1346	4352	3403	34088	0	34088	477	84	87	231	0	34088	533	34088	1341	34088	4476	34088	1362
Prairies	70772	1938	1445	4180	7563	5183	62952	2040	46485	768	115	103	273	0	46485	733	45383	1596	46485	6256	45457	1627
British Columbia	53514	276	243	1846	4072	2552	53158	2595	10805	182	55	37	46	59	10802	123	10737	600	10163	1567	6326	283
Yukon	4186	4	8	55	70	35	4186	18	N.A.	N.A.	N.A.	N.A.	N.A.	N.A.	N.A.	N.A.	N.A.	N.A.	N.A.	N.A.	N.A.	N.A.
Northwest Territories	1195	87	19	1	107	186	1184	0	1184	14	2	12	13	0	1184	18	1184	82	1184	162	1184	71
Nunavut	521	5	14	41	60	49	518	27	518	21	3	1	4	0	518	17	518	7	518	96	135	8
Territories	5902	96	41	97	237	270	5888	45	1702	35	5	13	17	0	1702	35	1702	89	1702	258	1319	79
CANADA	320560	4944	2252	23845	32751	22683	303956	18069	135167	1615	209	263	435	64	134450	2324	132548	4177	109563	12193	101307	2530

Specimens from YT, NT and NU are sent to reference laboratories in other provinces and reported results reflect specimens identified as originating from YT, NT or NU.

Results from British Columbia comprise of specimens from the following sites: BC Children's and Women's Hospital, Children's and Women's Hospital Laboratory, Fraser Health Medical Microbiology Laboratory, Island Health, Providence Health Care, Powell River Hospital, St. Paul's Hospital, Vancouver General Hospital, Victoria General Hospital, Victoria Coastal Health, BCCDC P

Delays in the reporting of data may cause data to change retrospectively.

Due to reporting delays, the sum of weekly report totals do not add up to cumulative totals.

For BC, only data from subtyped influenza A specimens are included in the weekly number of influenza detections and so the sum of A(H1N1)pdm09, A(H3), and A(UnS) positive results may not equal the sum of total Flu A positive results.

Figure 1: Number positive laboratory tests for other respiratory viruses by report week, Canada, 2019-20

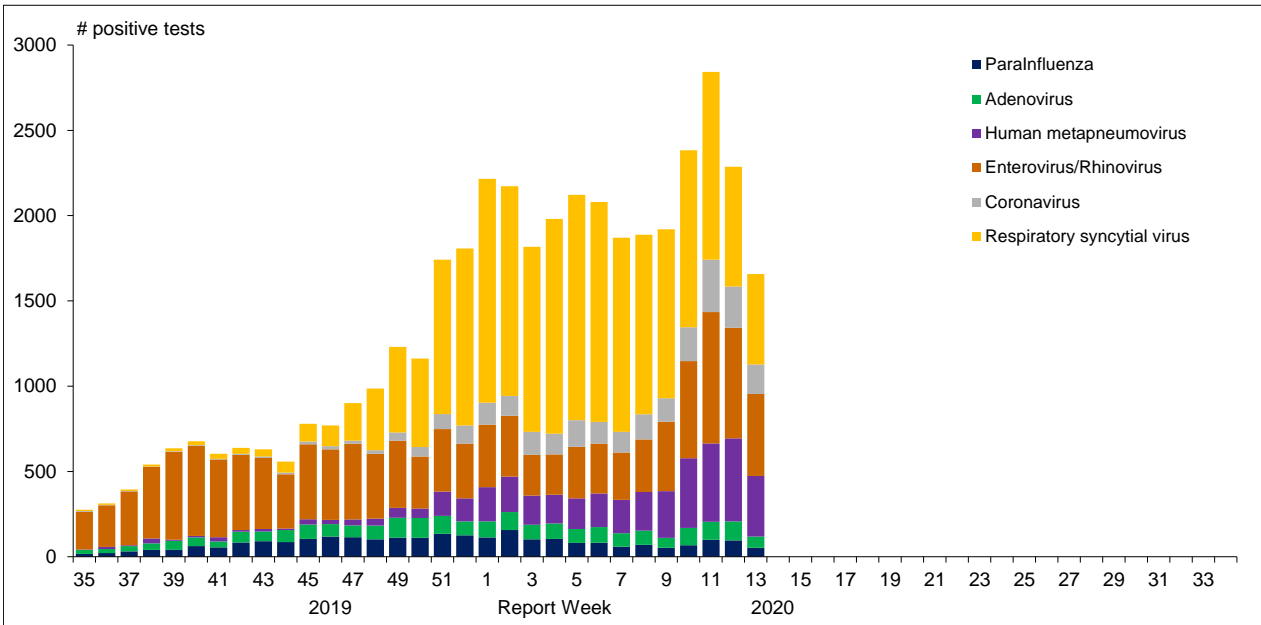


Figure 2 : Positive Influenza Tests (%) in Canada by Region by Week of Report

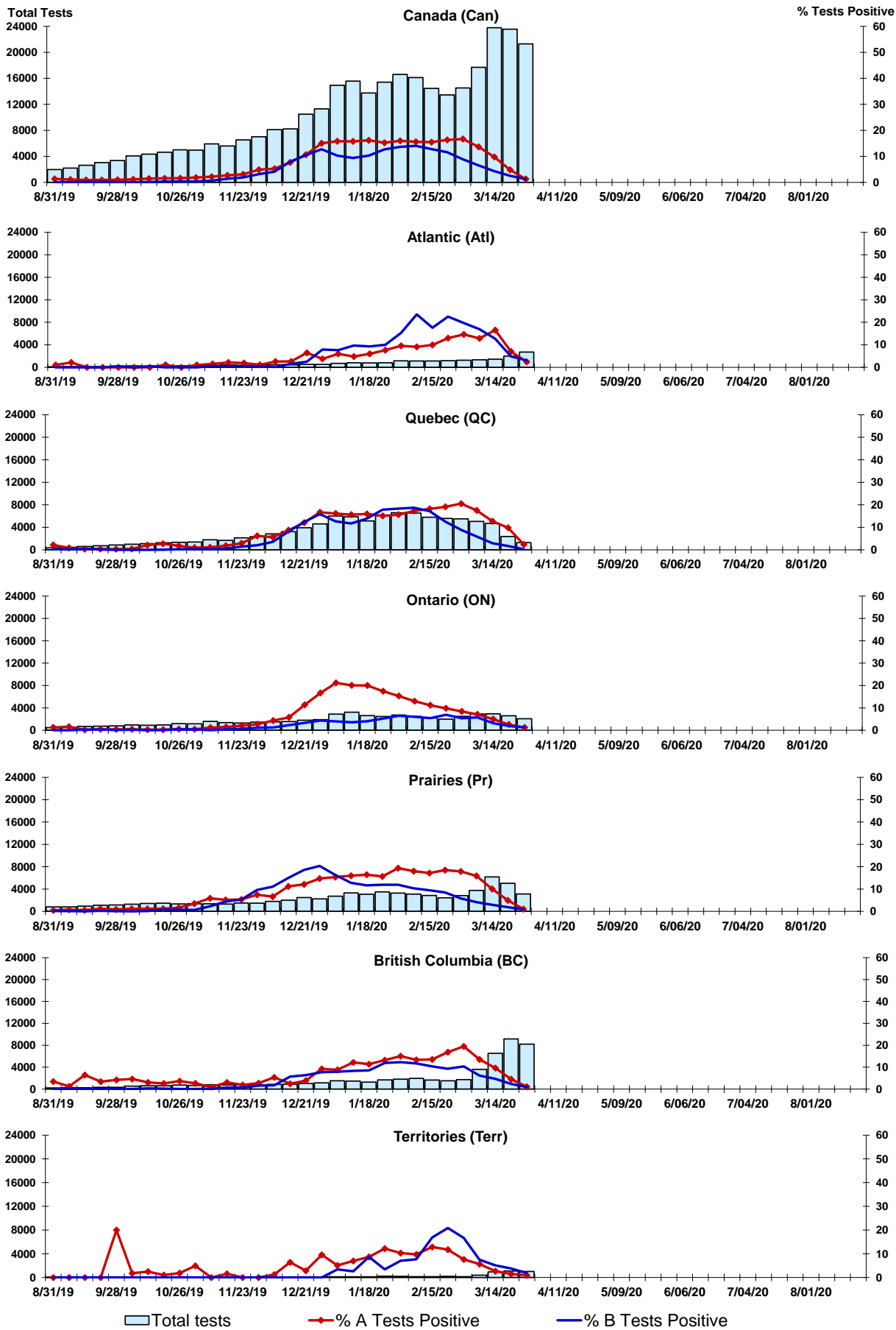


Figure 3: Positive Respiratory syncytial virus (RSV) Tests (%) in Canada by Region by Week of Report

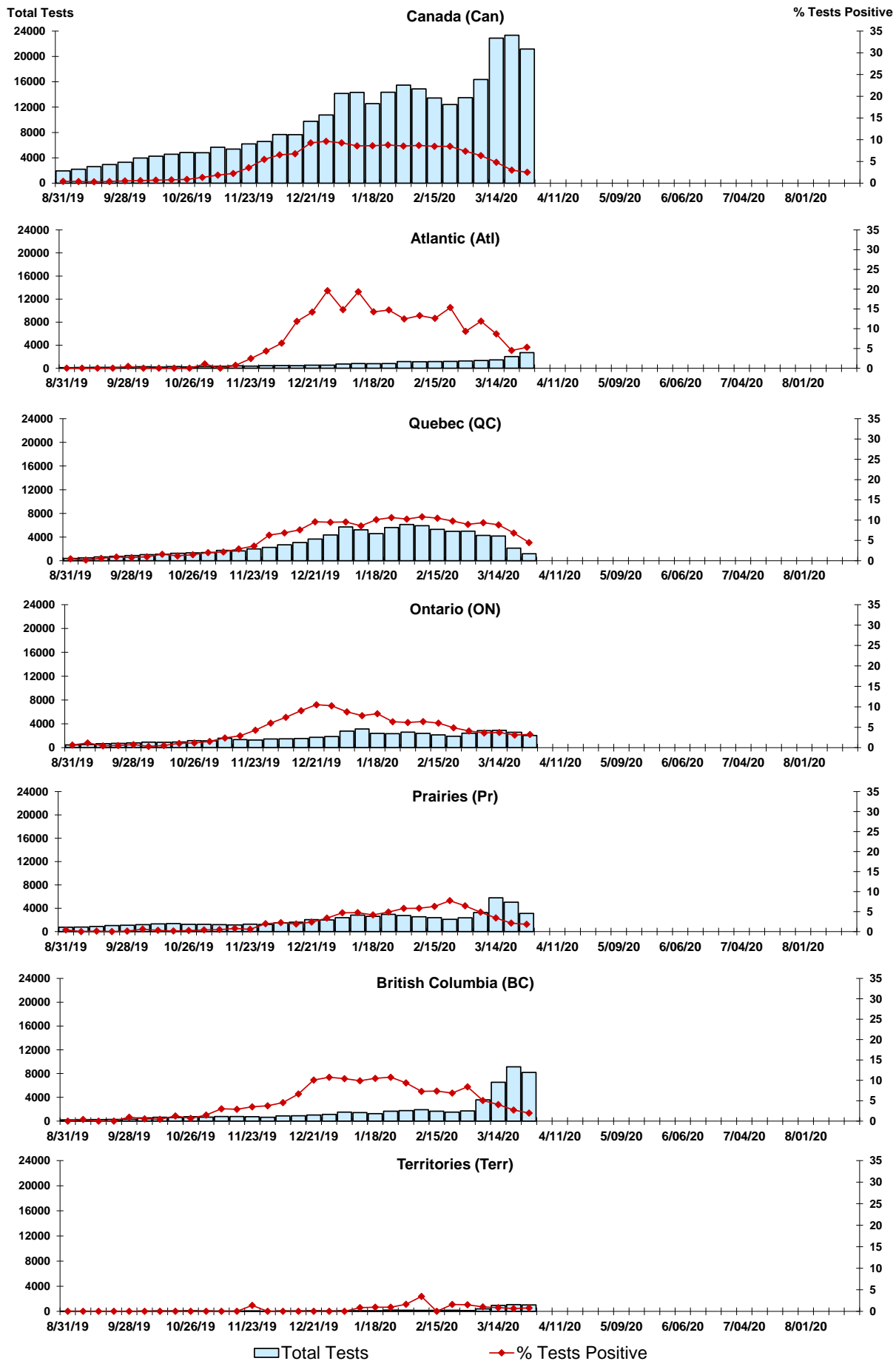


Figure 4: Positive Parainfluenza (PIV) Tests (%) in Canada by Region by Week of Report

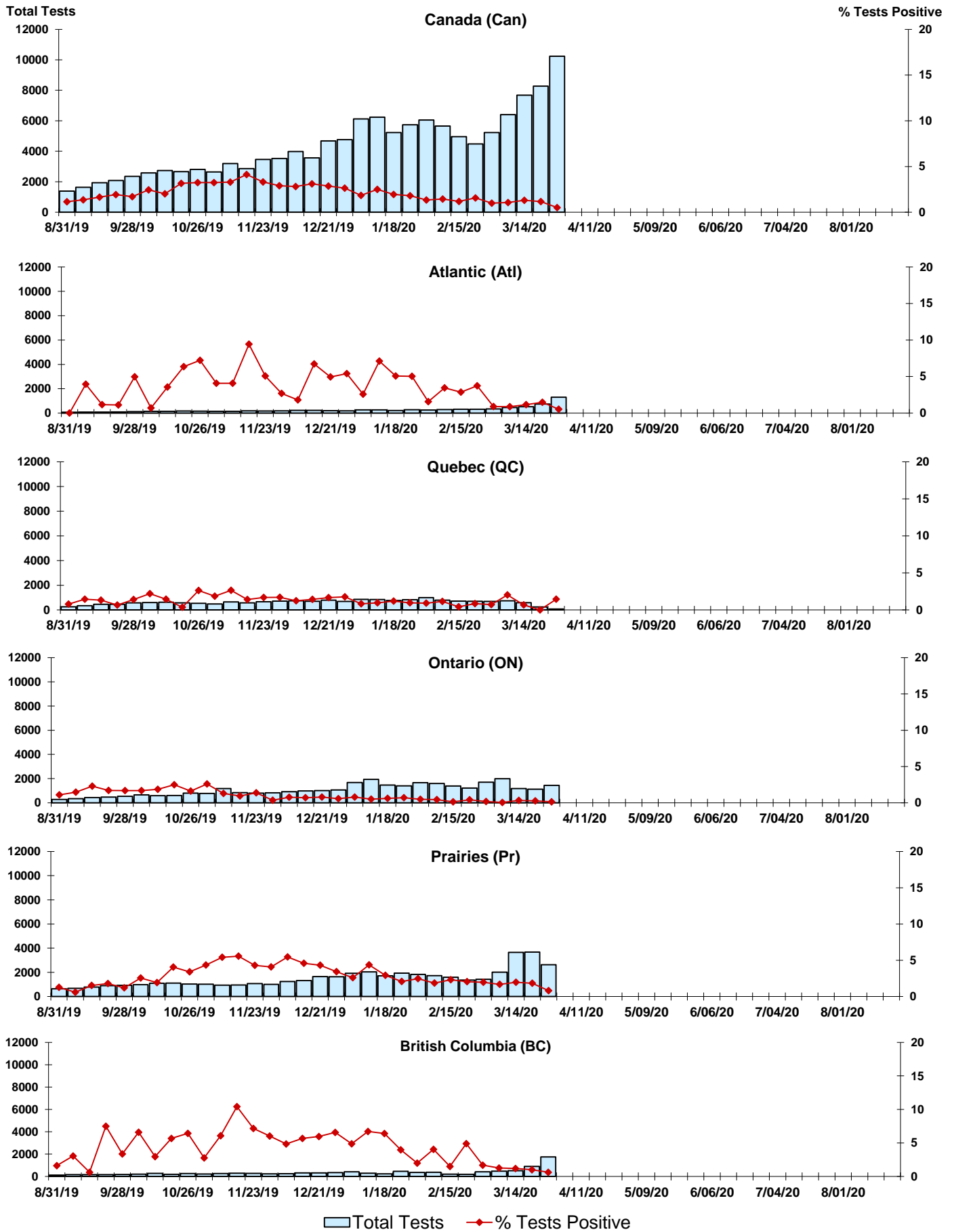


Figure 5: Positive Adenovirus (adeno) Tests (%) in Canada by Region by Week of Report

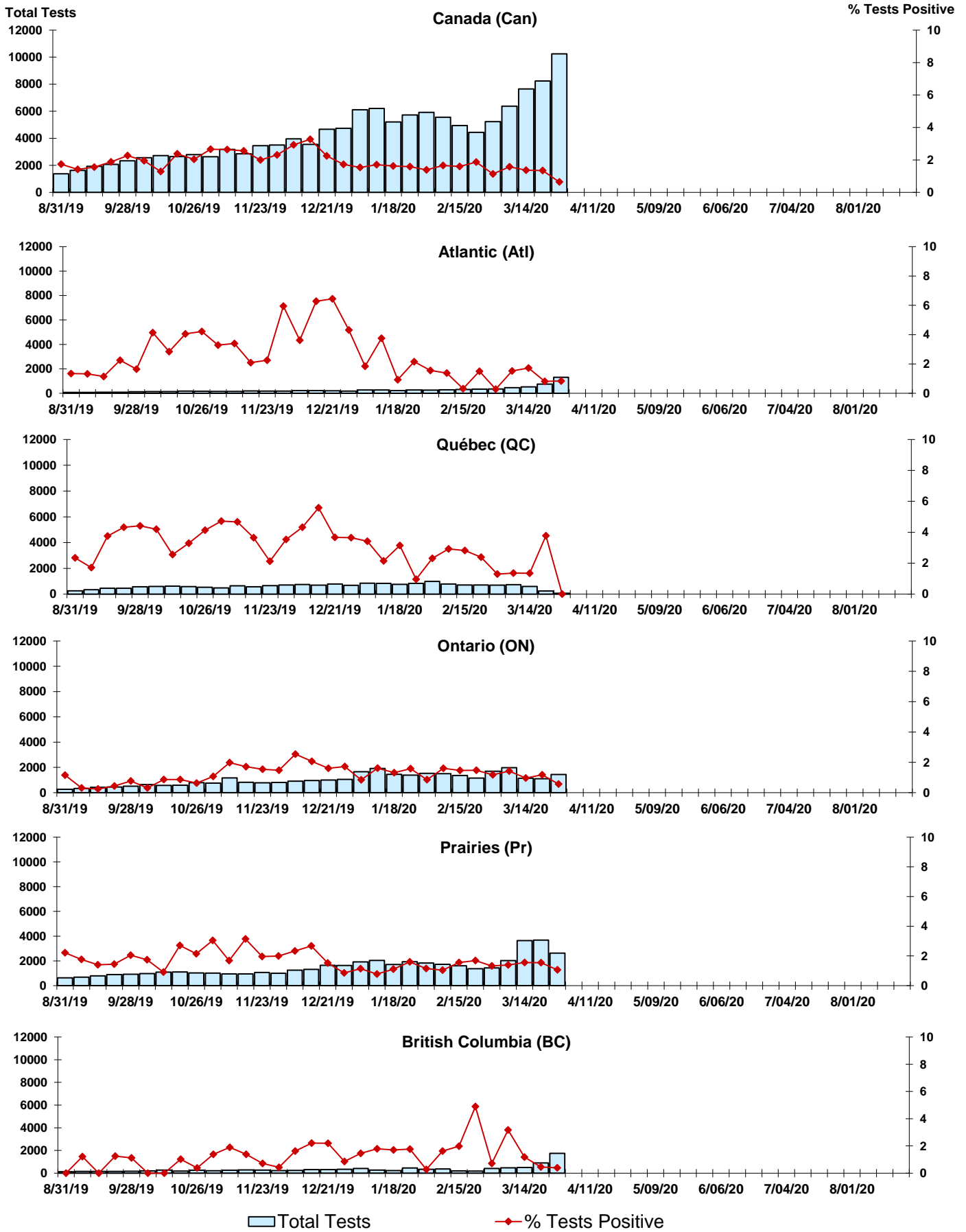


Figure 6: Positive human metapneumovirus (hMPV) Tests (%) in Canada by Region by Week of Report

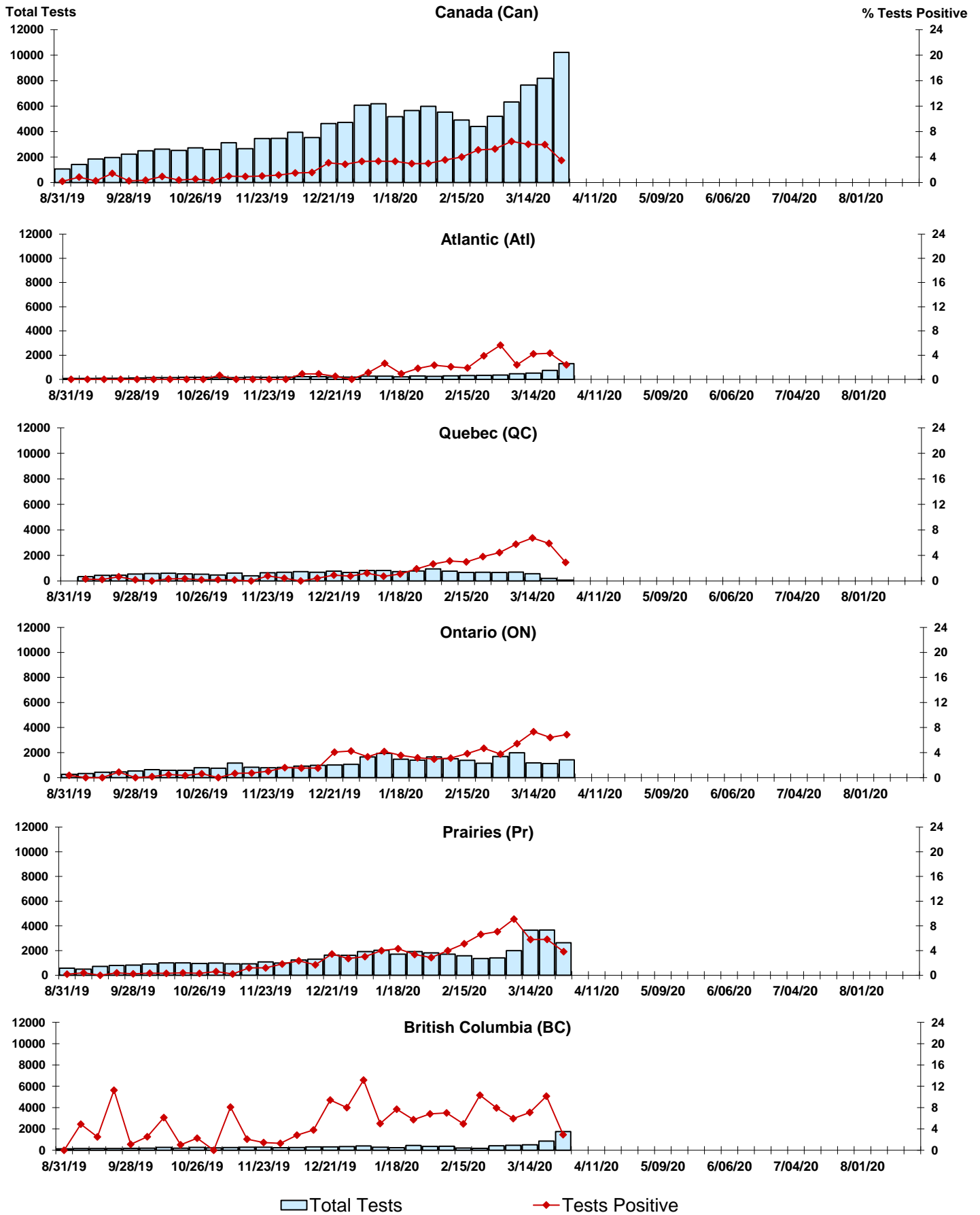


Figure 7: Positive Enterovirus/Rhinovirus (entero/rhino) Tests (%) in Canada by Region by Week of Report

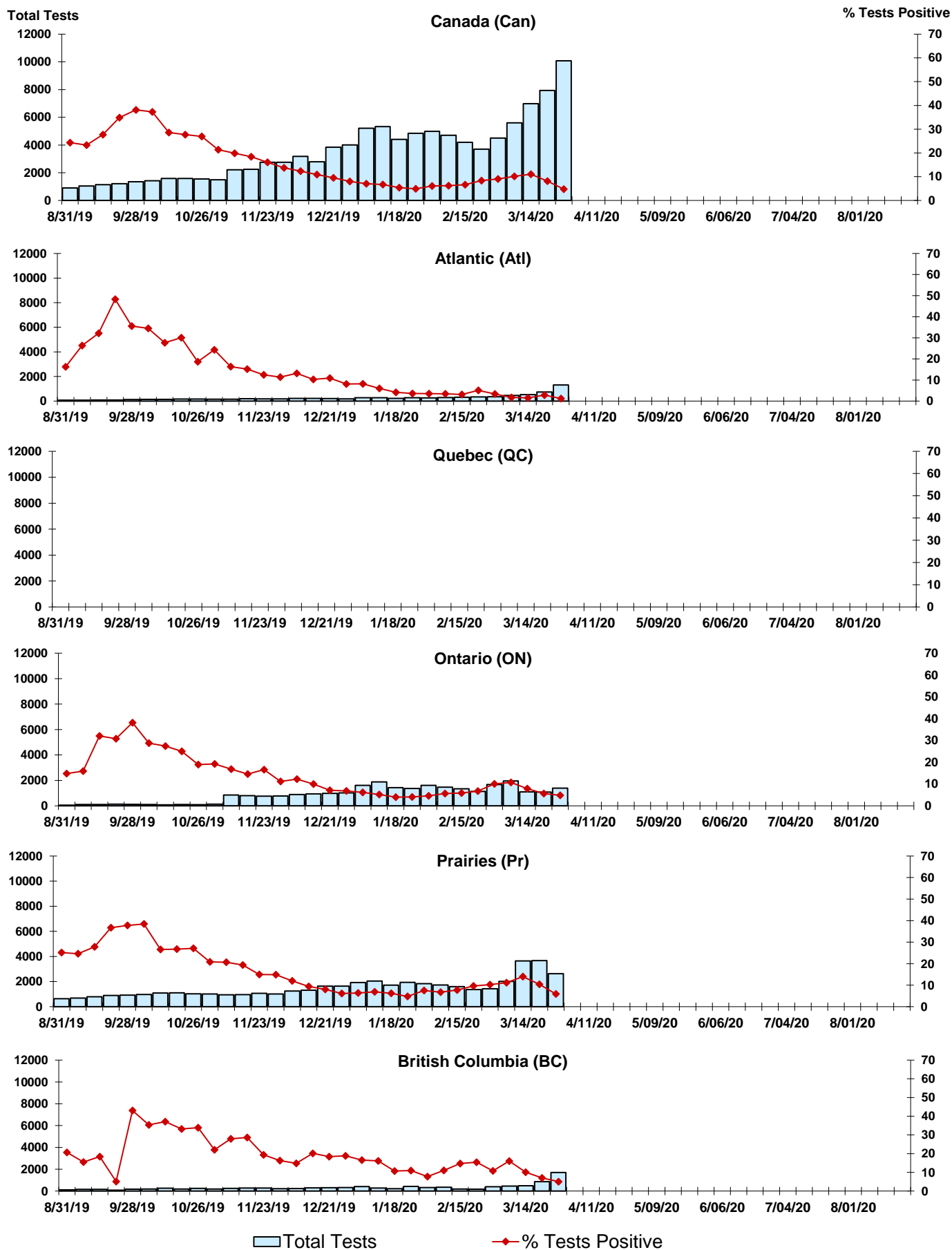
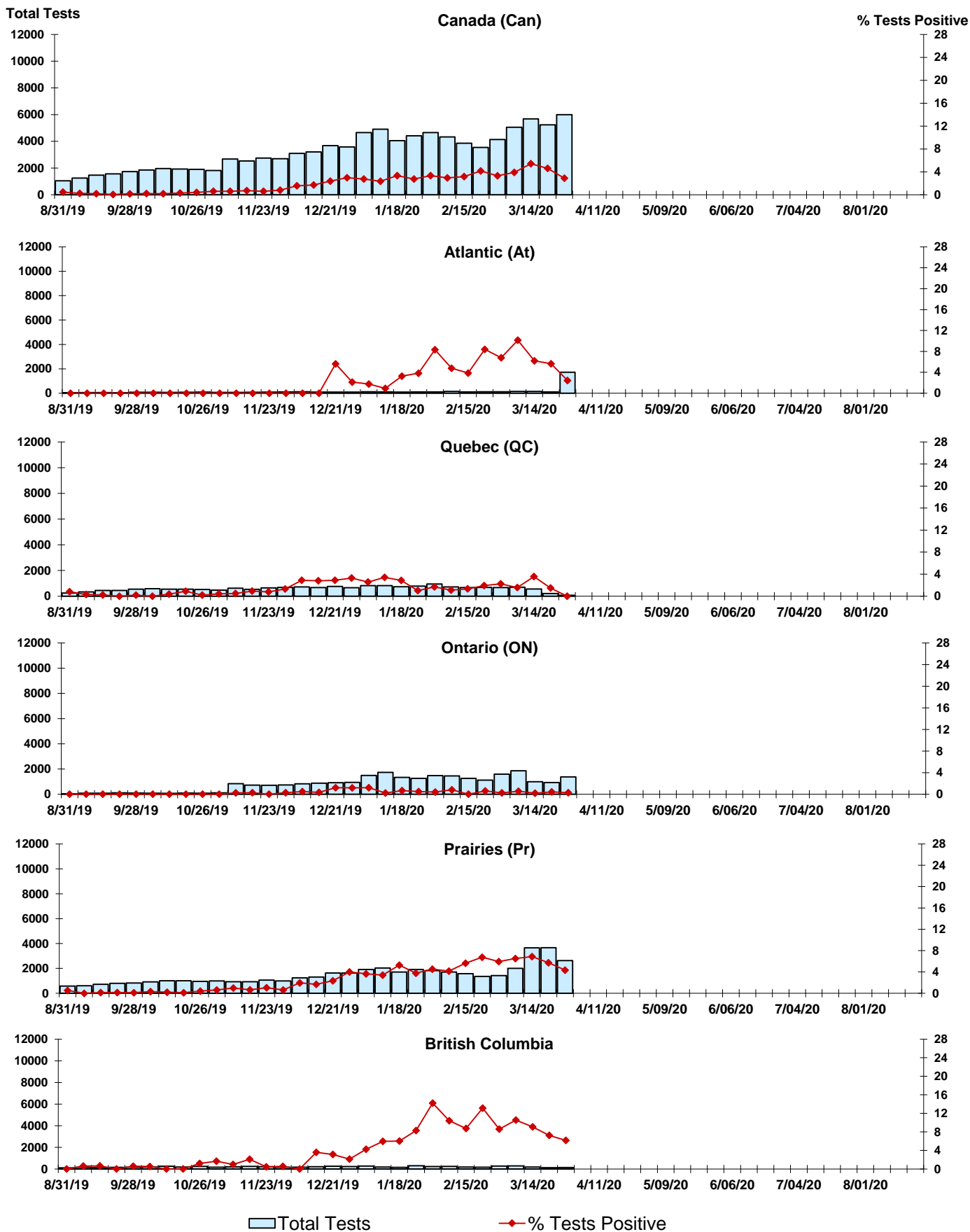


Figure 8: Positive Coronavirus (coron) Tests (%) in Canada by Region by Week of Report



Abbreviations:

A(H1N1)pdm09: Influenza A(H1N1)pdm09

A(H3): Influenza A(H3N2)

A (UnS): Influenza A (Unsubtyped)

Adeno: Adenovirus

CHEO: Children's Hospital of Eastern Ontario

Coron: Coronavirus

Entero: Enterovirus

hMPV: human metapneumovirus

HSC: Health Sciences Centre

N.A.: Not Applicable

P.H.L.: Public Health Laboratory

P.H.O.L.: Public Health Ontario Laboratory

PIV: Parainfluenza

Rhino: Rhinovirus

RSV: Respiratory syncytial virus

UHN: University Health Network

Notes:

Specimens from Yukon (YT), Northwest Territories (NT) and Nunavut (NU) are sent to reference laboratories in other provinces. Results reported for the Territories reflect the number of specimens that are identified as originating from YT, NT or NU.

Delays in the reporting of data may cause data to change retrospectively.

Due to reporting delays, the sum of weekly report totals do not add up to cumulative totals.

