

Respiratory Virus Report, Week 16 - ending April 18, 2020

The Respiratory Virus Detection Surveillance System collects data from select laboratories across Canada on the number of tests performed and the number of tests positive for influenza and other respiratory viruses. Data are reported on a weekly basis year-round to the Centre for Immunization and Respiratory Infectious Diseases (CIRID), Public Health Agency of Canada. These data are also summarized in the weekly FluWatch report.

In this Respiratory Virus Report, the number of detections of coronavirus reflects only seasonal human coronaviruses, not the novel pandemic coronavirus (SARS-CoV2) that causes COVID-19. For information on COVID-19, see the [Coronavirus disease \(COVID-19\): Outbreak](#)

Table 1: Respiratory Virus Detections/Isolations for the week ending April 18, 2020 (Reporting Week 202016)

Reporting Laboratory	Flu Tested	A(H1N1)pdm09 Positive	A(H3) Positive	A(UnS) Positive	Total Flu A Positive	Total Flu B Positive	RSV Tested	RSV Positive	PIV Tested	PIV 1 Positive	PIV 2 Positive	PIV 3 Positive	PIV 4 Positive	Other PIV Positive	Adeno Tested	Adeno Positive	hMPV Tested	hMPV Positive	Entero/Rhino Tested	Entero/Rhino Positive	Coron Tested	Coron Positive
Newfoundland	466	0	0	0	0	0	466	3	466	2	0	1	0	0	466	2	466	7	466	1	N.A.	N.A.
Prince Edward Island	20	0	0	0	0	0	20	0	0	0	0	0	0	0	0	0	0	0	0	0	0	0
Nova Scotia	398	0	0	0	0	0	398	9	3	0	0	0	0	0	3	0	3	0	3	0	3	0
New Brunswick	43	1	0	0	1	0	43	1	18	1	0	0	0	0	18	0	18	0	18	1	18	2
Atlantic	927	1	0	0	1	0	927	13	487	3	0	1	0	0	487	2	487	7	487	2	21	2
Région Nord-Est	101	0	0	0	0	0	92	0	0	0	0	0	0	0	0	0	0	0	N.A.	N.A.	0	0
Québec-Chaudière-Appalaches	21	0	0	0	0	0	21	0	0	0	0	0	0	0	0	0	0	0	N.A.	N.A.	0	0
Centre-du-Québec	69	0	0	0	0	0	65	1	4	0	0	0	0	0	4	0	4	0	N.A.	N.A.	4	0
Montréal-Laval	247	0	0	0	0	0	249	5	28	0	0	1	0	0	28	1	28	0	N.A.	N.A.	28	0
Ouest du Québec	88	0	0	0	0	0	85	1	0	0	0	0	0	0	0	0	0	0	N.A.	N.A.	0	0
Montérégie	11	0	0	0	0	0	11	0	0	0	0	0	0	0	0	0	0	0	N.A.	N.A.	0	0
Province of Québec	537	0	0	0	0	0	523	7	32	0	0	1	0	0	32	1	32	0	N.A.	N.A.	32	0
P.H.O.L. - Ottawa	128	0	0	0	0	0	128	0	128	0	0	0	0	0	128	0	127	4	128	2	127	0
CHEO - Ottawa	191	0	0	0	0	7	191	2	14	0	0	0	0	0	14	0	14	0	14	0	14	0
P.H.O.L. - Kingston	113	0	0	0	0	2	106	0	106	0	0	0	0	0	106	0	106	4	106	1	106	0
UHN / Mount Sinai Hospital	116	0	0	0	0	0	116	0	17	0	0	0	0	0	0	0	17	2	0	0	N.A.	N.A.
P.H.O.L. - Toronto	556	0	0	0	0	0	540	3	540	0	0	0	0	0	540	3	540	4	540	8	540	0
Sick Kids Hospital - Toronto	0	0	0	0	0	0	0	0	0	0	0	0	0	0	0	0	0	0	0	0	0	0
Sunnybrook & Women's College HSC	522	0	0	0	0	0	522	4	522	0	0	2	0	0	522	1	522	0	522	2	0	0
P.H.O.L. - Sault Ste. Marie	29	0	0	0	0	0	29	0	29	0	0	0	0	0	29	0	29	1	29	0	29	0
P.H.O.L. - Timmins	90	0	0	0	0	0	89	2	90	0	0	0	0	0	90	0	90	0	90	0	90	0
St. Joseph's - London	29	0	0	0	0	0	29	0	24	0	0	0	0	0	24	0	24	0	18	1	18	0
P.H.O.L. - London	361	0	0	0	0	0	358	2	358	0	0	0	0	0	358	1	358	8	358	8	358	0
P.H.O.L. - Orillia	67	0	0	0	0	0	66	1	66	0	0	0	0	0	66	0	66	0	66	7	66	0
P.H.O.L. - Thunder Bay	170	0	0	0	0	0	170	4	170	0	0	0	0	0	170	1	170	8	170	11	170	0
P.H.O.L. - Sudbury	80	0	0	0	0	0	80	0	80	0	0	0	0	0	80	0	80	0	80	0	80	0
P.H.O.L. - Hamilton	270	0	0	1	1	0	261	5	261	0	0	0	0	0	261	1	261	1	261	4	261	0
P.H.O.L. - Peterborough	35	0	0	0	0	0	35	0	35	0	0	0	0	0	35	1	35	0	35	1	35	0
St. Joseph's - Hamilton	2505	0	0	0	0	0	2505	1	2505	1	0	0	0	0	2505	3	2505	4	2505	17	0	0
Province of Ontario	5262	0	0	1	1	9	5225	24	4945	1	0	2	0	0	4928	11	4944	36	4922	62	1894	0
Province of Manitoba	939	0	0	0	0	0	939	12	49	0	0	0	0	0	49	0	49	2	49	3	0	0
Regina	161	0	0	0	0	0	161	2	119	0	1	0	3	0	119	0	119	11	119	2	119	0
Saskatoon	0	0	0	0	0	0	0	0	0	0	0	0	0	0	0	0	0	0	0	0	0	0
Province of Saskatchewan	161	0	0	0	0	0	161	2	119	0	1	0	3	0	119	0	119	11	119	2	119	0
Province of Alberta	4965	2	0	0	2	2	4965	0	4965	1	5	0	5	0	4965	51	4965	38	4965	191	4965	69
Prairies	6065	2	0	0	2	2	6065	14	5133	1	6	0	8	0	5133	51	5133	51	5133	196	5084	69
British Columbia	3155	0	0	0	0	0	3153	21	1136	0	0	0	4	2	1136	2	1136	9	1126	22	206	2
Yukon	190	0	0	0	0	0	190	0	N.A.	N.A.	N.A.	N.A.	N.A.	N.A.	N.A.	N.A.	N.A.	N.A.	N.A.	N.A.	N.A.	N.A.
Northwest Territories	23	0	0	0	0	0	23	0	23	0	0	0	0	0	23	0	23	0	23	1	23	0
Nunavut	36	0	0	0	0	0	36	2	36	0	0	0	1	0	36	0	36	3	36	3	4	1
Territories	249	0	0	0	0	0	249	2	59	0	0	0	1	0	59	0	59	3	59	4	27	1
CANADA	16195	3	0	1	4	11	16142	81	11792	5	6	4	13	2	11775	67	11791	106	11727	286	7264	74

Specimens from Yukon (YT), Northwest Territories (NT) and Nunavut (NU) are sent to reference laboratories in other provinces and reported results reflect specimens identified as originating from YT, NT or NU.

Results from British Columbia comprise of specimens from the following sites: BC Children's and Women's Hospital, Children's and Women's Hospital Laboratory, Fraser Health Medical Microbiology Laboratory, Island Health, Providence Health Care, Powell River Hospital, St. Paul's Hospital, Vancouver General Hospital, Victoria General Hospital, Victoria Coastal Health, BCCDC Public Health Laboratory, Interior Health Authority sites and Northern Health Authority sites.

Delays in the reporting of data may cause data to change retrospectively.

For BC, only data from subtyped influenza A specimens are included in the weekly number of influenza detections and so the sum of A(H1N1)pdm09, A(H3), and A(UnS) positive results may not equal the sum of total Flu A positive results.

Table 2: Respiratory Virus Detections/Isolations for the period August 31, 2019 - April 18, 2020 (Reporting Weeks 201935-202016)

Reporting Laboratory	Flu Tested	A(H1N1)pdm09 Positive	A(H3) Positive	A(UnS) Positive	Total Flu A Positive	Total Flu B Positive	RSV Tested	RSV Positive	PIV Tested	PIV 1 Positive	PIV 2 Positive	PIV 3 Positive	PIV 4 Positive	Other PIV Positive	Adeno Tested	Adeno Positive	hMPV Tested	hMPV Positive	Entero/Rhino Tested	Entero/Rhino Positive	Coron Tested	Coron Positive
Newfoundland	8485	8	33	165	206	512	8485	322	8485	143	1	11	0	0	8485	109	8485	188	8485	346	N.A.	N.A.
Prince Edward Island	1200	0	0	144	144	78	1200	145	48	1	0	0	1	0	48	0	46	0	48	16	48	2
Nova Scotia	5520	3	2	195	200	248	5620	620	520	13	1	3	5	0	554	11	554	11	554	77	564	14
New Brunswick	11440	61	29	957	1047	1292	11381	1077	2273	53	6	0	13	0	2273	62	2273	16	2273	285	3947	117
Atlantic	26645	72	64	1461	1597	2130	26686	2164	11326	210	8	14	19	0	11360	182	11358	215	11360	724	4559	133
Région Nord-Est	8967	0	0	1135	1135	1323	7694	644	0	0	0	0	0	0	0	0	0	0	N.A.	N.A.	0	0
Québec-Chaudière-Appalaches	13939	0	0	1900	1900	1828	13783	1318	2633	31	4	3	14	0	2684	79	2085	24	N.A.	N.A.	2029	34
Centre-du-Québec	18899	0	0	2909	2909	2395	15212	1385	16	0	0	0	0	0	16	0	16	0	N.A.	N.A.	16	0
Montréal-Laval	37476	0	0	4020	4020	2411	36321	2393	16631	144	4	35	13	0	16631	514	16168	270	N.A.	N.A.	16478	260
Ouest du Québec	12390	0	0	1745	1745	1278	11548	1089	0	0	0	0	0	0	0	0	0	0	N.A.	N.A.	0	0
Montérégie	8518	0	0	1133	1133	791	8290	610	0	0	0	0	0	0	0	0	0	0	N.A.	N.A.	0	0
Province of Québec	100189	0	0	12842	12842	10026	92848	7439	19280	175	8	38	27	0	19331	593	18269	294	N.A.	N.A.	18523	294
P.H.O.L. - Ottawa	1634	108	61	3	172	71	1625	85	1600	2	0	0	0	0	1600	16	1586	58	1444	78	1429	0
CHEO - Ottawa	8472	1	0	652	653	433	8472	680	875	17	0	5	10	5	875	17	875	20	878	158	866	28
P.H.O.L. - Kingston	1165	62	27	4	93	22	1143	67	1139	1	0	0	0	0	1139	16	1130	58	970	62	957	0
UHN / Mount Sinai Hospital	11972	9	0	651	660	218	11972	348	572	7	2	10	2	0	0	0	649	16	0	0	N.A.	N.A.
P.H.O.L. - Toronto	16133	1348	144	36	1528	355	15656	416	15577	34	0	3	0	0	15577	153	15357	440	13033	785	12793	0
Sick Kids Hospital - Toronto	2369	104	13	99	216	168	1898	207	1898	26	5	8	27	0	1898	52	1898	48	1898	366	1898	91
Sunnybrook & Women's College HSC	3078	0	0	124	124	25	3078	61	3078	8	0	15	0	0	2819	11	2938	34	2938	66	120	0
P.H.O.L. - Sault Ste. Marie	448	20	0	0	20	8	447	27	448	1	0	0	0	0	448	4	445	30	397	14	394	0
P.H.O.L. - Timmins	524	65	3	2	70	12	492	30	495	0	0	0	0	0	495	0	492	30	467	5	462	0
St. Joseph's - London	4392	0	0	238	238	114	4392	334	1367	19	4	3	14	0	1367	23	1367	33	701	110	680	19
P.H.O.L. - London	4798	309	112	9	430	145	4763	248	4749	8	0	0	0	0	4749	45	4711	178	4293	296	4243	0
P.H.O.L. - Orillia	1461	81	31	3	115	33	1458	86	1455	4	0	0	0	0	1455	8	1450	50	1264	78	1257	0
P.H.O.L. - Thunder Bay	881	82	17	9	108	45	879	58	879	0	0	1	0	0	879	13	868	50	831	48	819	0
P.H.O.L. - Sudbury	718	29	14	4	47	15	713	45	713	0	0	1	0	0	713	9	703	11	641	28	630	0
P.H.O.L. - Hamilton	4582	286	39	11	336	117	4459	162	4440	10	1	0	0	0	4440	68	4419	139	3845	339	3820	0
P.H.O.L. - Peterborough	1112	66	4	1	71	10	1103	33	1102	3	0	0	0	0	1101	10	1097	47	847	72	840	0
St. Joseph's - Hamilton	24890	0	0	1617	1617	806	24890	1269	24890	119	6	26	0	0	24890	269	24890	461	24890	1248	0	0
Province of Ontario	88629	2570	465	3463	6498	2597	87440	4156	65277	259	18	72	53	5	64445	714	64875	1703	59337	3753	31208	138
Manitoba	16465	174	134	1338	1646	889	16072	948	3543	48	8	4	8	0	3543	56	2509	50	3543	486	2365	76
Regina	11944	43	26	1193	1262	663	11953	1040	4639	148	12	6	30	0	4639	81	4562	204	4639	777	4639	145
Saskatoon	4455	0	0	318	318	235	4455	182	4519	98	12	6	7	0	4519	66	4522	27	4519	530	4519	45
Province of Saskatchewan	16399	43	26	1511	1580	898	16408	1222	9158	246	24	12	37	0	9158	147	9084	231	9158	1307	9158	190
Province of Alberta	54029	1738	1286	1346	4370	3412	46586	0	46586	489	94	94	255	0	46586	640	46586	1575	46586	5027	46586	1646
Prairies	86893	1955	1446	4195	7596	5199	79066	2170	59287	783	126	110	300	0	59287	843	58179	1856	59287	6820	58109	1912
British Columbia	67037	277	244	1847	4086	2571	66679	2746	14790	183	55	37	51	78	14787	139	14722	659	14072	1661	7038	304
Yukon	5896	4	8	55	73	45	5896	23	N.A.	N.A.	N.A.	N.A.	N.A.	N.A.	N.A.	N.A.	N.A.	N.A.	N.A.	N.A.	N.A.	N.A.
Northwest Territories	1349	90	19	1	110	191	1338	0	1338	14	2	13	13	0	1338	21	1338	86	1338	169	1338	73
Nunavut	682	5	14	42	61	55	679	36	679	22	3	1	5	0	679	19	679	15	679	101	165	11
Territories	7927	99	41	98	244	291	7913	59	2017	36	5	14	18	0	2017	40	2017	101	2017	270	1503	84
CANADA	377320	4973	2260	23906	32863	22814	360632	18734	171977	1646	220	285	468	83	171227	2511	169420	4828	146073	13228	120940	2865

Specimens from YT, NT and NU are sent to reference laboratories in other provinces and reported results reflect specimens identified as originating from YT, NT or NU.

Results from British Columbia comprise of specimens from the following sites: BC Children's and Women's Hospital, Children's and Women's Hospital Laboratory, Fraser Health Medical Microbiology Laboratory, Island Health, Providence Health Care, Powell River Hospital, St. Paul's Hospital, Vancouver General Hospital, Victoria General Hospital, Victoria Coastal Health, BCCDC P

Delays in the reporting of data may cause data to change retrospectively. Due to reporting delays, the sum of weekly report totals do not add up to cumulative totals.

For BC, only data from subtyped influenza A specimens are included in the weekly number of influenza detections and so the sum of A(H1N1)pdm09, A(H3), and A(UnS) positive results may not equal the sum of total Flu A positive results.

Figure 1: Number positive laboratory tests for other respiratory viruses by report week, Canada, 2019-20

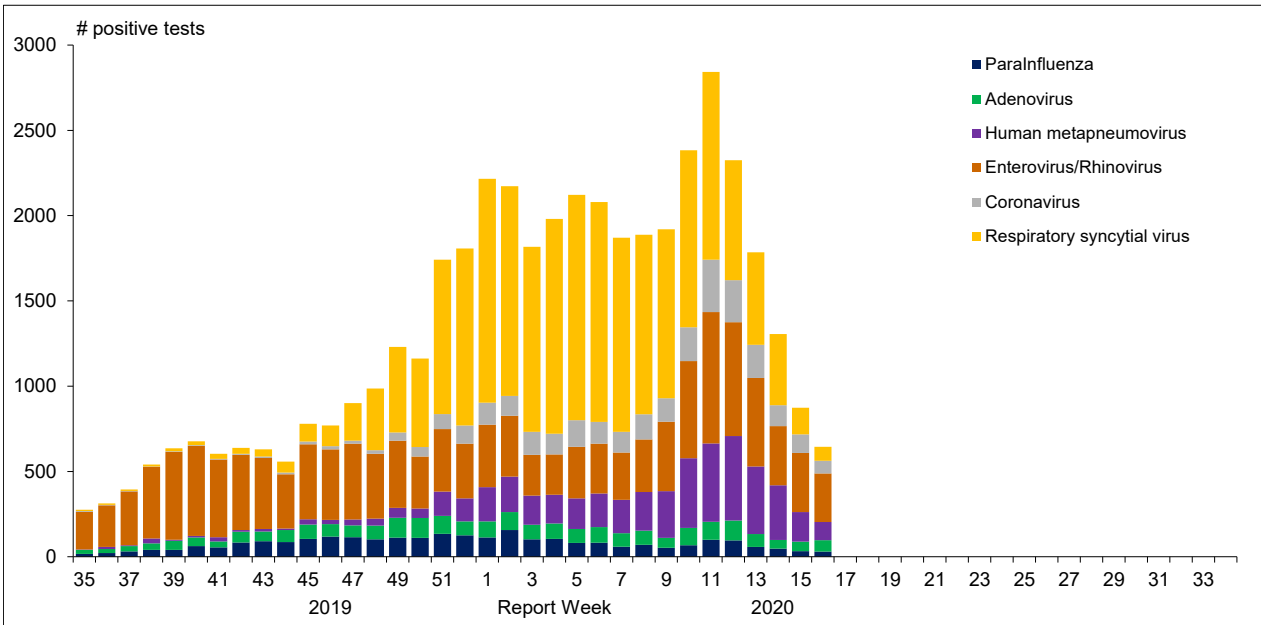


Figure 2 : Positive Influenza Tests (%) in Canada by Region by Week of Report

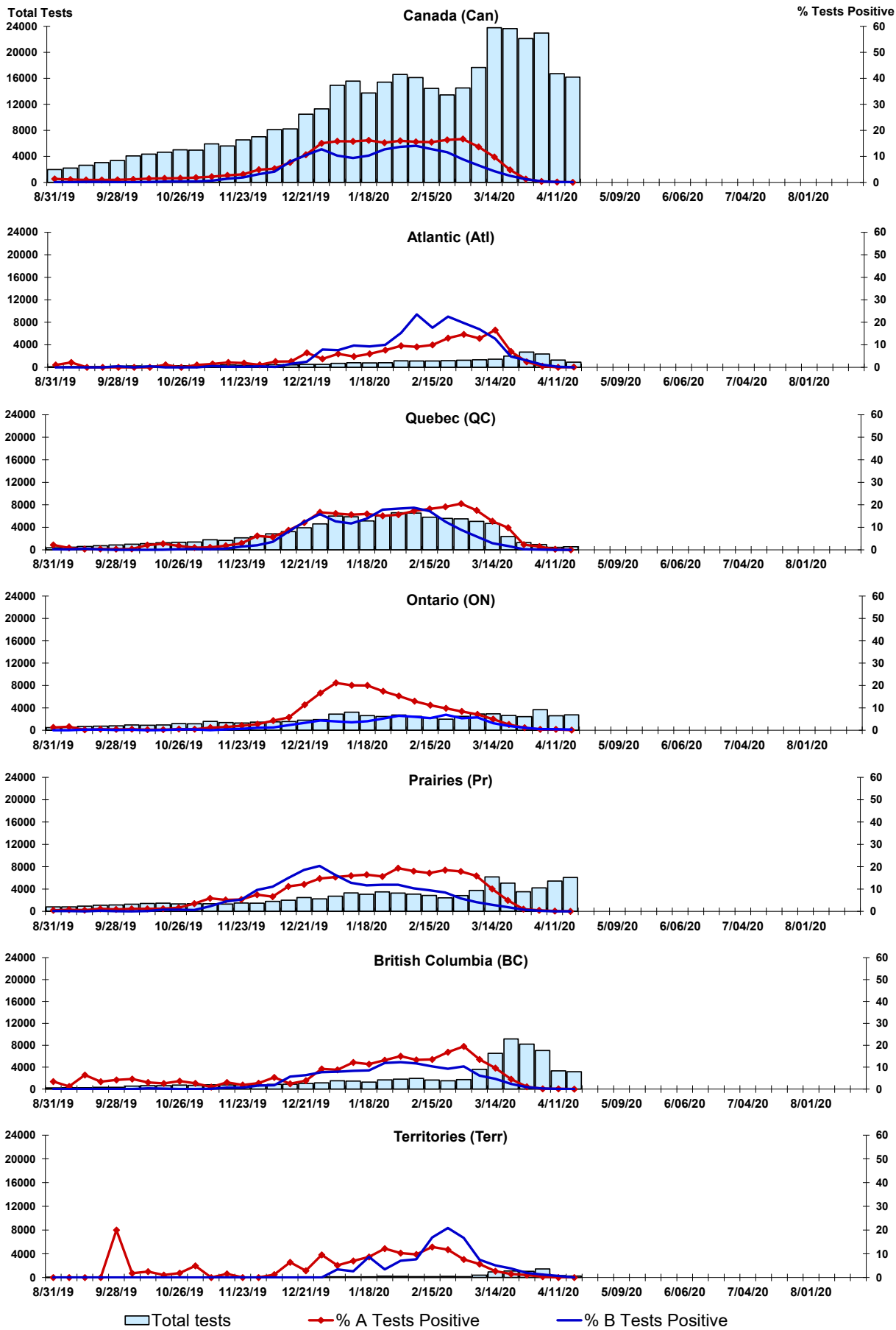


Figure 3: Positive Respiratory syncytial virus (RSV) Tests (%) in Canada by Region by Week of Report

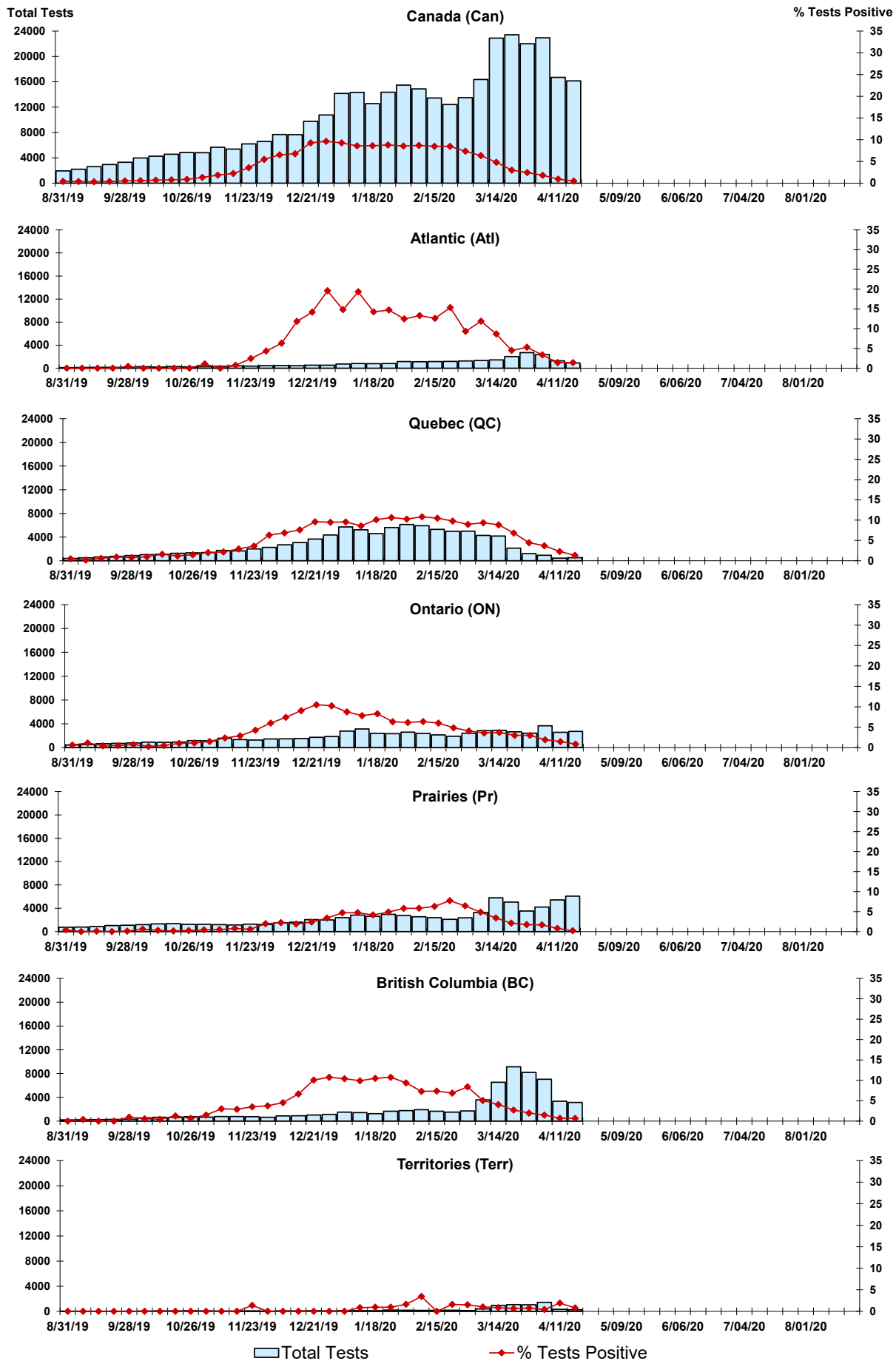


Figure 4: Positive Parainfluenza (PIV) Tests (%) in Canada by Region by Week of Report

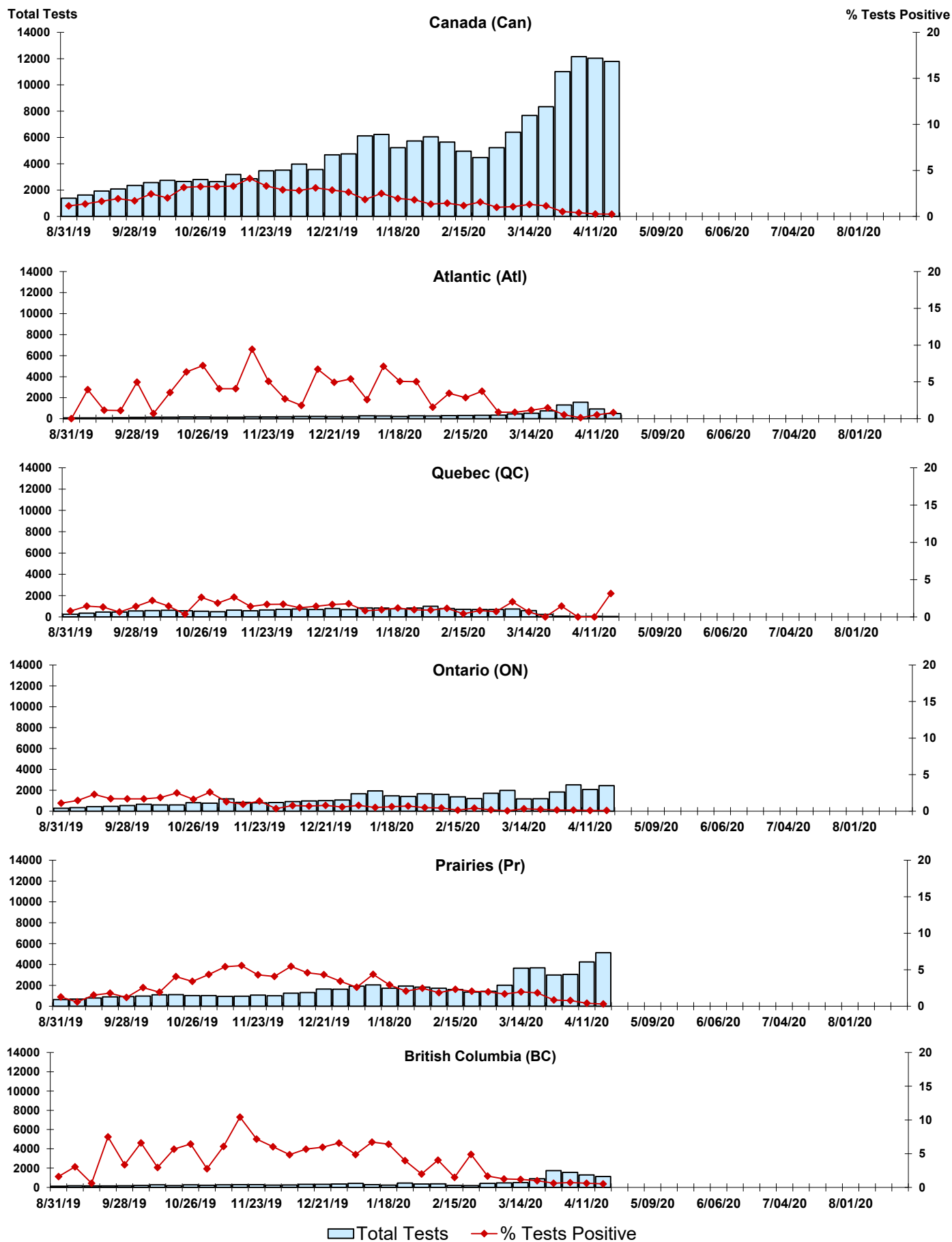


Figure 5: Positive Adenovirus (adeno) Tests (%) in Canada by Region by Week of Report

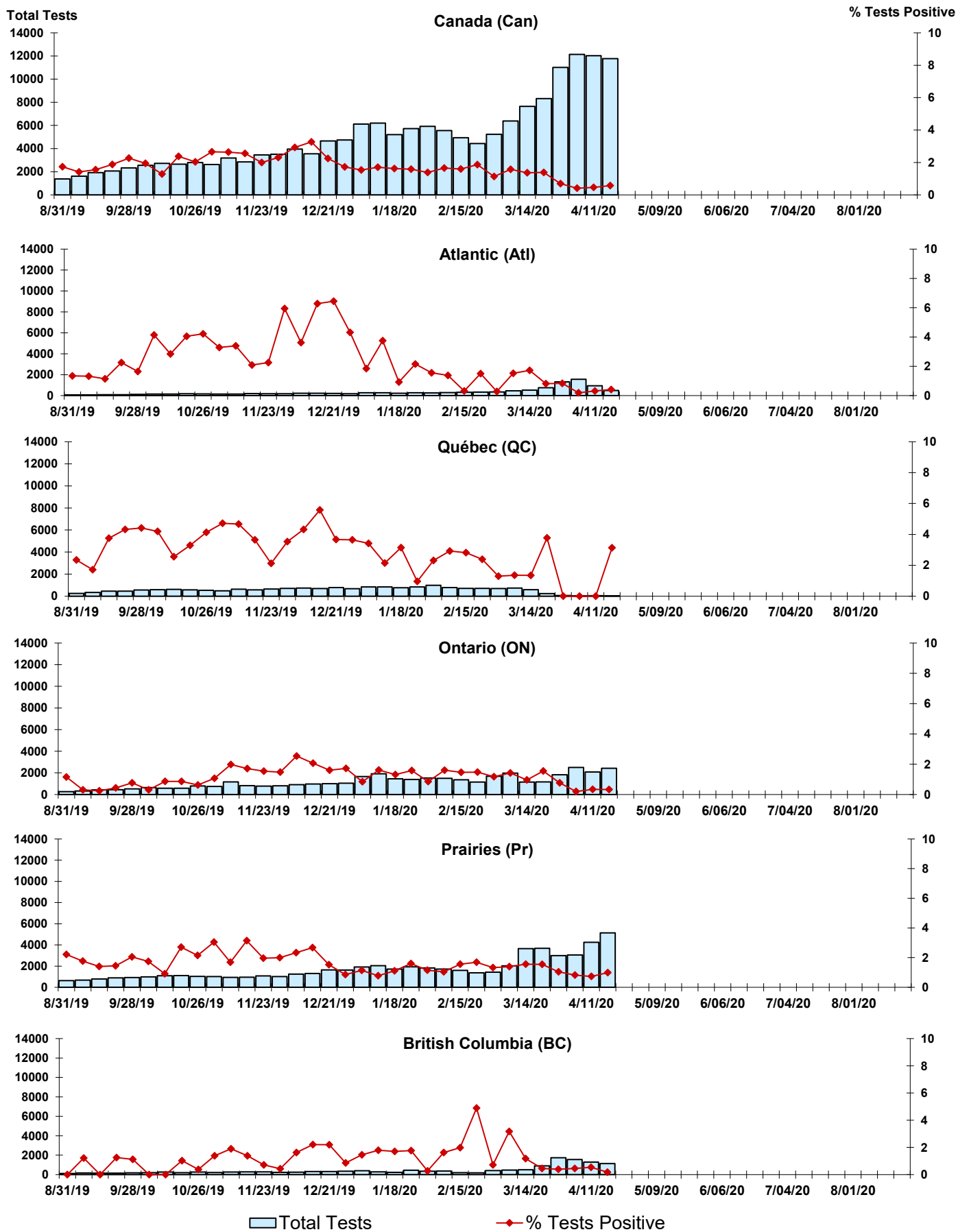


Figure 6: Positive human metapneumovirus (hMPV) Tests (%) in Canada by Region by Week of Report

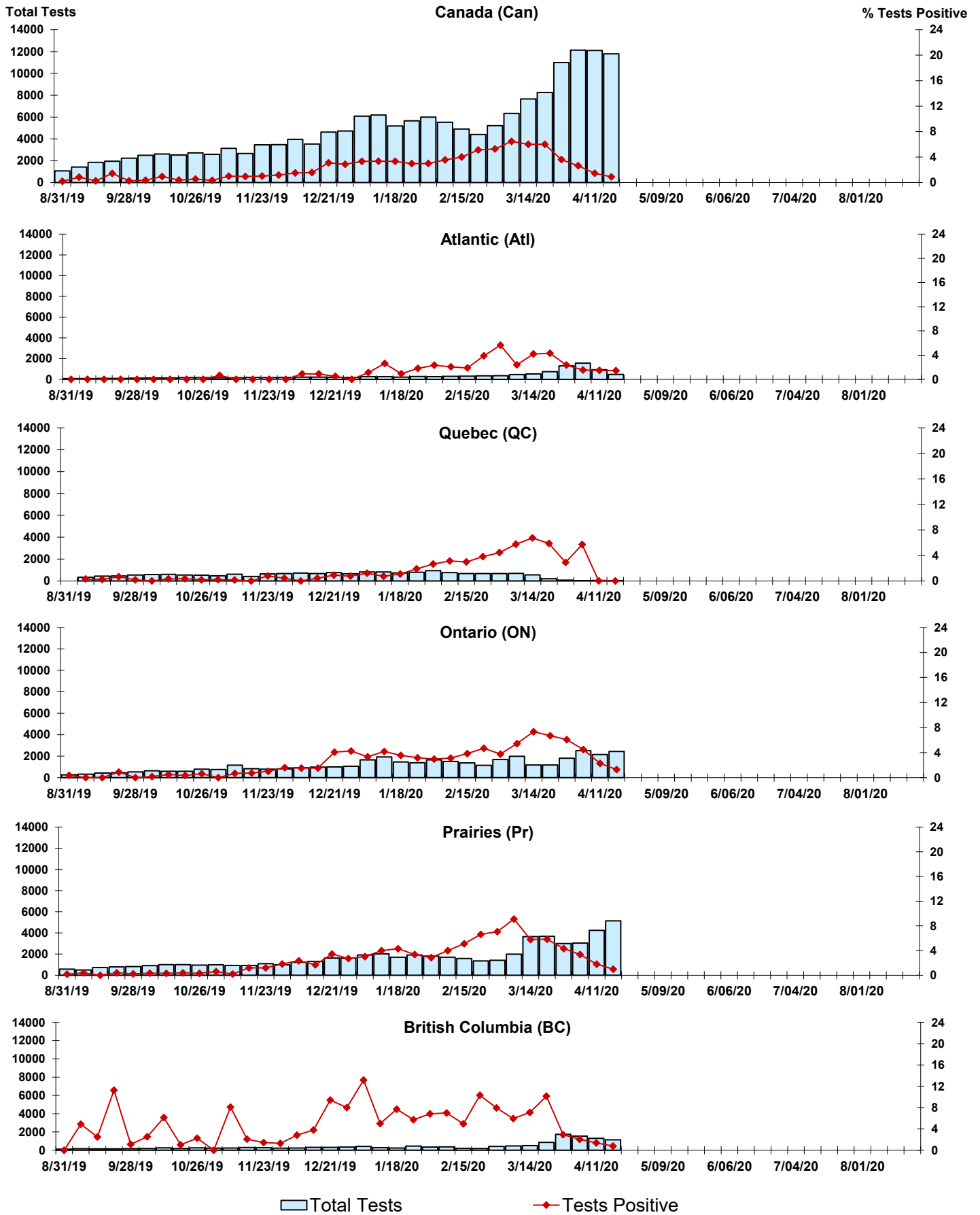


Figure 7: Positive Enterovirus/Rhinovirus (entero/rhino) Tests (%) in Canada by Region by Week of Report

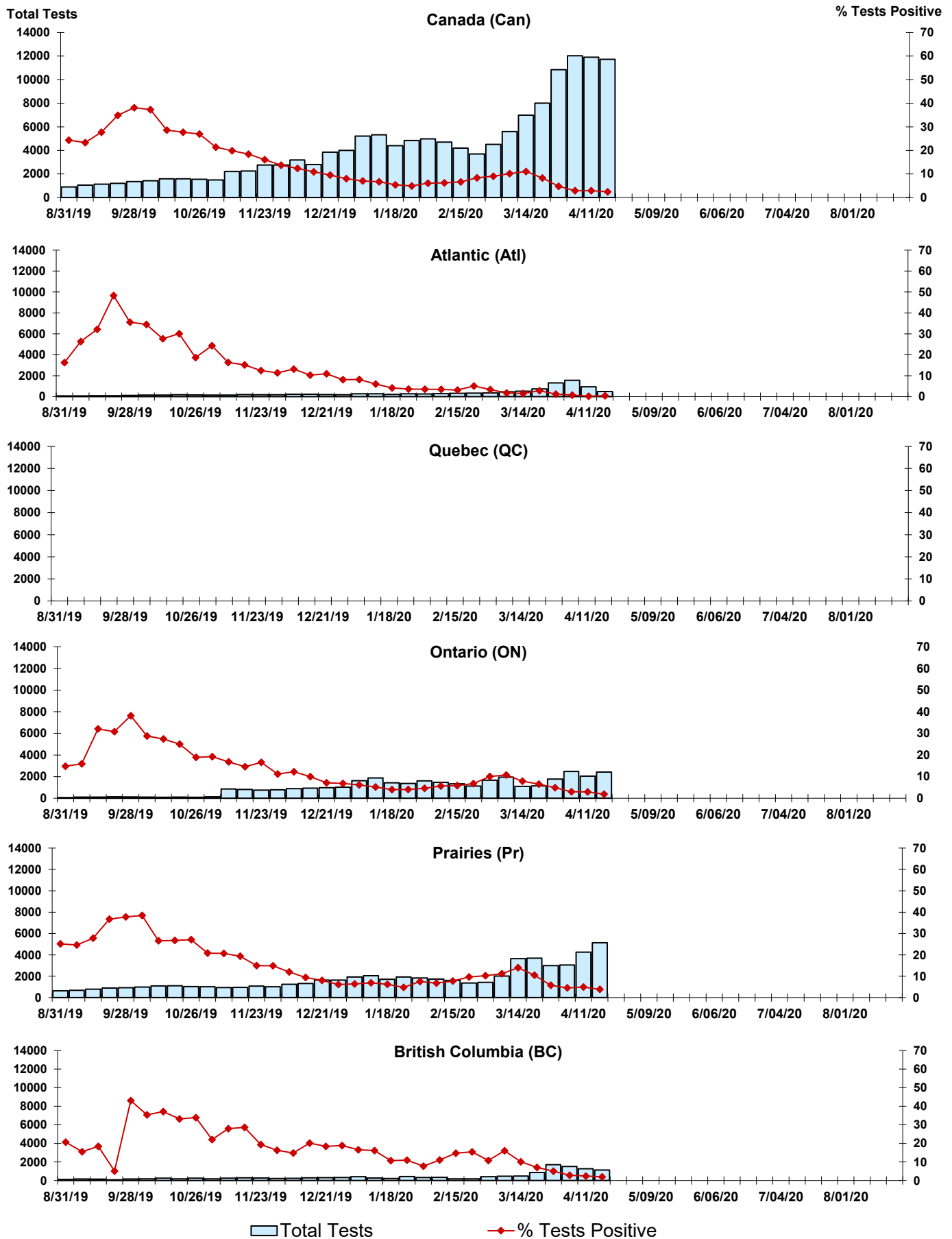
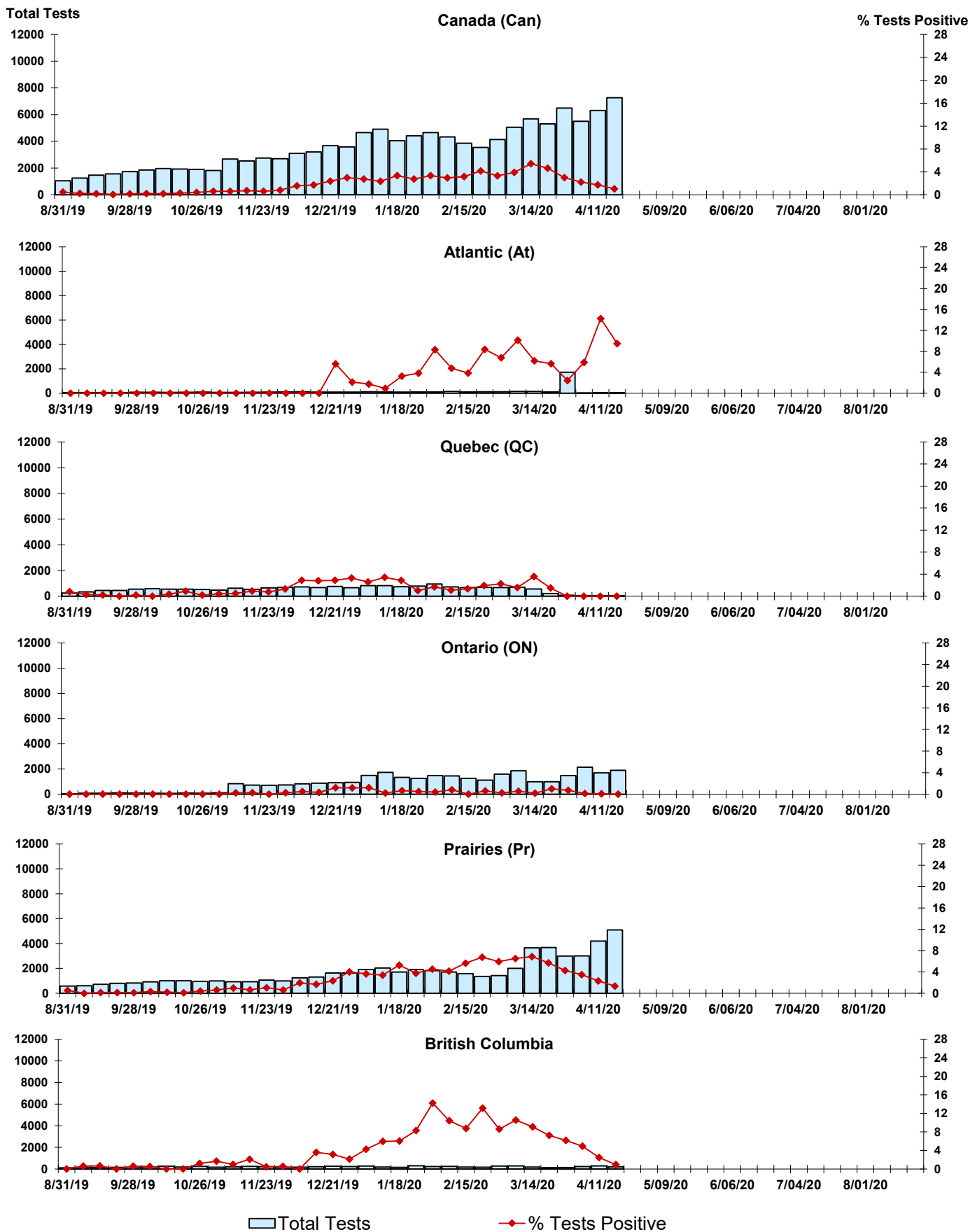


Figure 8: Positive Coronavirus (coron) Tests (%) in Canada by Region by Week of Report



Abbreviations:

A(H1N1)pdm09: Influenza A(H1N1)pdm09

A(H3): Influenza A(H3N2)

A (UnS): Influenza A (Unsubtyped)

Adeno: Adenovirus

CHEO: Children's Hospital of Eastern Ontario

Coron: Coronavirus

Entero: Enterovirus

hMPV: human metapneumovirus

HSC: Health Sciences Centre

N.A.: Not Applicable

P.H.L.: Public Health Laboratory

P.H.O.L.: Public Health Ontario Laboratory

PIV: Parainfluenza

Rhino: Rhinovirus

RSV: Respiratory syncytial virus

UHN: University Health Network

Notes:

Specimens from Yukon (YT), Northwest Territories (NT) and Nunavut (NU) are sent to reference laboratories in other provinces. Results reported for the Territories reflect the number of specimens that are identified as originating from YT, NT or NU.

Delays in the reporting of data may cause data to change retrospectively.

Due to reporting delays, the sum of weekly report totals do not add up to cumulative totals.

