

Respiratory Virus Report, Week 18 - ending May 2, 2020

The Respiratory Virus Detection Surveillance System collects data from select laboratories across Canada on the number of tests performed and the number of tests positive for influenza and other respiratory viruses. Data are reported on a weekly basis year-round to the Centre for Immunization and Respiratory Infectious Diseases (CIRID), Public Health Agency of Canada. These data are also summarized in the weekly FluWatch report.

In this Respiratory Virus Report, the number of detections of coronavirus reflects only seasonal human coronaviruses, not the novel pandemic coronavirus (SARS-CoV2) that causes COVID-19. For information on COVID-19, see the [Coronavirus disease \(COVID-19\): Outbreak](#)

Table 1: Respiratory Virus Detections/Isolations for the week ending May 2, 2020 (Reporting Week 202018)

Reporting Laboratory	Flu Tested	A(H1N1)pdm09 Positive	A(H3) Positive	A(UnS) Positive	Total Flu A Positive	Total Flu B Positive	RSV Tested	RSV Positive	PIV Tested	PIV 1 Positive	PIV 2 Positive	PIV 3 Positive	PIV 4 Positive	Other PIV Positive	Adeno Tested	Adeno Positive	hMPV Tested	hMPV Positive	Entero/Rhino Tested	Entero/Rhino Positive	Coron Tested	Coron Positive
Newfoundland	770	0	0	1	1	0	770	5	770	0	0	0	0	0	770	2	770	0	770	3	N.A.	N.A.
Prince Edward Island	23	0	0	0	0	0	23	0	0	0	0	0	0	0	0	0	0	0	0	0	0	0
Nova Scotia	342	0	0	1	1	0	342	1	4	0	0	0	0	0	4	0	4	0	4	0	7	0
New Brunswick	60	0	0	0	0	0	60	0	15	0	0	0	0	0	15	0	15	0	15	0	2341	1
Atlantic	1195	0	0	2	2	0	1195	6	789	0	0	0	0	0	789	2	789	0	789	3	2348	1
Région Nord-Est	56	0	0	0	0	0	45	0	0	0	0	0	0	0	0	0	0	0	N.A.	N.A.	0	0
Québec-Chaudière-Appalaches	11	0	0	0	0	0	26	0	17	0	0	0	0	0	17	0	15	0	N.A.	N.A.	15	0
Centre-du-Québec	21	0	0	0	0	0	14	0	11	0	0	1	0	0	11	0	11	0	N.A.	N.A.	11	1
Montréal-Laval	80	0	0	0	0	0	81	0	12	0	0	0	0	0	12	0	12	0	N.A.	N.A.	12	0
Ouest du Québec	37	0	0	0	0	0	37	0	0	0	0	0	0	0	0	0	0	0	N.A.	N.A.	0	0
Montérégie	1	0	0	0	0	0	1	0	0	0	0	0	0	0	0	0	0	0	N.A.	N.A.	0	0
Province of Québec	206	0	0	0	0	0	204	0	40	0	0	1	0	0	40	0	38	0	N.A.	N.A.	38	1
P.H.O.L. - Ottawa	33	0	0	0	0	0	33	0	33	0	0	0	0	0	33	1	33	0	33	0	33	0
CHEO - Ottawa	131	0	0	1	1	4	131	1	11	0	0	0	0	0	11	0	11	0	11	1	11	0
P.H.O.L. - Kingston	50	0	0	0	0	0	50	0	50	0	0	0	0	0	50	0	50	0	50	0	50	0
UHN / Mount Sinai Hospital	0	0	0	0	0	0	0	0	3	0	0	0	0	0	0	0	3	0	0	0	N.A.	N.A.
P.H.O.L. - Toronto	235	0	0	0	0	0	232	0	232	0	0	0	0	0	232	0	232	0	232	2	232	0
Sick Kids Hospital - Toronto	0	0	0	0	0	0	0	0	0	0	0	0	0	0	0	0	0	0	0	0	0	0
Sunnybrook & Women's College HSC	0	0	0	0	0	0	0	0	0	0	0	0	0	0	0	0	0	0	0	0	0	0
P.H.O.L. - Sault Ste. Marie	30	0	0	0	0	0	25	0	25	0	0	0	0	0	25	0	25	2	25	0	25	0
P.H.O.L. - Timmins	31	0	0	0	0	0	31	0	31	0	0	0	0	0	31	0	31	0	31	0	31	0
St. Joseph's - London	41	0	0	0	0	0	41	0	41	0	0	0	0	0	41	0	41	0	9	0	9	1
P.H.O.L. - London	86	0	0	0	0	0	85	1	85	0	0	0	0	0	85	2	85	0	85	0	85	0
P.H.O.L. - Orillia	45	0	0	0	0	0	45	2	45	0	0	0	0	0	45	0	45	0	45	0	45	0
P.H.O.L. - Thunder Bay	86	0	0	0	0	0	86	3	86	0	0	0	0	0	86	0	86	0	86	0	86	0
P.H.O.L. - Sudbury	53	0	0	0	0	0	53	0	53	0	0	0	0	0	53	0	53	0	53	0	53	0
P.H.O.L. - Hamilton	151	0	0	0	0	0	121	0	121	0	0	0	0	0	121	0	121	0	121	0	121	0
P.H.O.L. - Peterborough	23	0	0	0	0	0	23	0	23	0	0	0	0	0	23	0	23	0	23	0	23	0
St. Joseph's - Hamilton	895	0	0	0	0	0	895	3	895	0	0	0	0	0	895	1	895	0	895	11	0	0
Province of Ontario	1890	0	0	1	1	4	1851	10	1734	0	0	0	0	0	1731	4	1734	2	1699	14	804	1
Province of Manitoba	810	0	0	0	0	0	810	19	71	0	0	0	0	0	71	0	63	2	71	0	0	0
Regina	252	0	0	0	0	0	252	0	182	0	0	0	0	0	182	1	182	0	182	3	182	1
Saskatoon	0	0	0	0	0	0	0	0	0	0	0	0	0	0	0	0	0	0	0	0	0	0
Province of Saskatchewan	252	0	0	0	0	0	252	0	182	0	0	0	0	0	182	1	182	0	182	3	182	1
Province of Alberta	5411	0	0	0	0	1	5409	0	5409	2	1	1	3	0	5409	49	5409	11	5409	112	5409	27
Prairies	6473	0	0	0	0	1	6471	19	5662	2	1	1	3	0	5662	50	5654	13	5662	115	5591	28
British Columbia	1051	0	0	1	1	0	1051	2	251	0	0	0	0	0	251	1	251	2	251	3	251	2
Yukon	645	0	0	0	0	0	645	0	N.A.	N.A.	N.A.	N.A.	N.A.	N.A.	N.A.	N.A.	N.A.	N.A.	N.A.	N.A.	N.A.	N.A.
Northwest Territories	22	0	0	0	0	0	22	0	22	0	0	0	0	0	22	0	22	0	22	1	22	0
Nunavut	32	0	0	0	0	4	32	3	32	0	0	0	0	0	32	0	32	0	32	0	3	1
Territories	699	0	0	0	0	4	699	3	54	0	0	0	0	0	54	0	54	0	54	1	25	1
CANADA	11514	0	0	4	4	9	11471	40	8530	2	1	2	3	0	8527	57	8520	17	8455	136	9057	34

Specimens from Yukon (YT), Northwest Territories (NT) and Nunavut (NU) are sent to reference laboratories in other provinces and reported results reflect specimens identified as originating from YT, NT or NU.

Results from British Columbia comprise of specimens from the following sites: BC Children's and Women's Hospital, Children's and Women's Hospital Laboratory, Fraser Health Medical Microbiology Laboratory, Island Health, Providence Health Care, Powell River Hospital, St. Paul's Hospital, Vancouver General Hospital, Victoria General Hospital, Victoria Coastal Health, BCCDC Public Health Laboratory, Interior Health Authority sites and Northern Health Authority sites.

Delays in the reporting of data may cause data to change retrospectively.

For BC, only data from subtyped influenza A specimens are included in the weekly number of influenza detections and so the sum of A(H1N1)pdm09, A(H3), and A(UnS) positive results may not equal the sum of total Flu A positive results.

Table 2: Respiratory Virus Detections/Isolations for the period August 31, 2019 - May 2, 2020 (Reporting Weeks 201935-202018)

Reporting Laboratory	Flu Tested	A(H1N1)pdm09 Positive	A(H3) Positive	A(UnS) Positive	Total Flu A Positive	Total Flu B Positive	RSV Tested	RSV Positive	PIV Tested	PIV 1 Positive	PIV 2 Positive	PIV 3 Positive	PIV 4 Positive	Other PIV Positive	Adeno Tested	Adeno Positive	hMPV Tested	hMPV Positive	Entero/Rhino Tested	Entero/Rhino Positive	Coron Tested	Coron Positive
Newfoundland	9779	8	33	166	207	512	9779	329	9779	144	1	11	0	0	9779	111	9779	189	9779	350	N.A.	N.A.
Prince Edward Island	1241	0	0	144	144	78	1241	145	48	1	0	0	1	0	48	0	46	0	48	16	48	2
Nova Scotia	6118	3	2	196	201	248	6220	624	530	13	1	3	5	0	564	11	564	11	564	77	577	14
New Brunswick	11548	61	29	957	1047	1292	11489	1077	2316	53	7	0	13	0	2316	62	2316	16	2316	285	6316	125
Atlantic	28686	72	64	1463	1599	2130	28729	2175	12673	211	9	14	19	0	12707	184	12705	216	12707	728	6941	141
Région Nord-Est	9095	0	0	1135	1135	1323	7797	644	0	0	0	0	0	0	0	0	0	0	N.A.	N.A.	0	0
Québec-Chaudière-Appalaches	13950	0	0	1900	1900	1828	13813	1318	2664	31	4	3	14	0	2712	79	2111	24	N.A.	N.A.	2055	34
Centre-du-Québec	18946	0	0	2909	2909	2395	15252	1385	27	0	0	1	0	0	27	0	27	0	N.A.	N.A.	27	1
Montréal-Laval	37742	0	0	4021	4021	2411	36588	2398	16690	144	4	35	13	0	16690	514	16227	270	N.A.	N.A.	16537	260
Ouest du Québec	12530	0	0	1745	1745	1278	11683	1089	0	0	0	0	0	0	0	0	0	0	N.A.	N.A.	0	0
Montérégie	8520	0	0	1133	1133	791	8292	610	0	0	0	0	0	0	0	0	0	0	N.A.	N.A.	0	0
Province of Québec	100783	0	0	12843	12843	10026	93425	7444	19381	175	8	39	27	0	19429	593	18365	294	N.A.	N.A.	18619	295
P.H.O.L. - Ottawa	1738	108	61	3	172	71	1729	85	1704	2	0	0	0	0	1704	17	1690	59	1548	78	1533	0
CHEO - Ottawa	8750	1	0	654	655	442	8750	683	900	17	0	5	10	5	900	17	900	20	903	163	891	28
P.H.O.L. - Kingston	1309	62	27	4	93	23	1292	67	1288	1	0	0	0	0	1288	16	1279	59	1119	62	1106	0
UHN / Mount Sinai Hospital	11972	9	0	651	660	218	11972	348	584	7	2	10	2	0	0	0	661	16	0	0	N.A.	N.A.
P.H.O.L. - Toronto	16868	1348	144	36	1528	355	16404	416	16325	34	0	3	0	0	16325	153	16105	440	13781	791	13541	0
Sick Kids Hospital - Toronto	2407	104	13	99	216	168	1936	208	1936	26	5	8	27	0	1936	53	1936	48	1936	366	1936	92
Sunnybrook & Women's College HSC	3456	0	0	124	124	25	3456	64	3456	9	0	17	0	0	3197	11	3316	35	3316	66	120	0
P.H.O.L. - Sault Ste. Marie	517	20	0	0	20	8	504	27	505	1	0	0	0	0	505	4	502	32	454	14	451	0
P.H.O.L. - Timmins	666	65	3	2	70	12	634	32	637	0	0	0	0	0	637	1	634	30	609	5	604	0
St. Joseph's - London	4485	0	0	238	238	114	4485	334	1454	19	4	3	14	0	1454	23	1454	33	731	110	710	21
P.H.O.L. - London	5099	309	112	9	430	145	5064	250	5050	8	0	0	0	0	5051	49	5012	180	4594	296	4544	0
P.H.O.L. - Orillia	1575	81	31	3	115	33	1572	89	1569	4	0	0	0	0	1569	8	1564	50	1378	81	1371	0
P.H.O.L. - Thunder Bay	1091	82	17	9	108	45	1089	62	1089	0	0	1	0	0	1089	13	1078	52	1041	49	1029	0
P.H.O.L. - Sudbury	846	29	14	4	47	15	840	45	841	0	0	1	0	0	841	9	831	11	769	28	758	0
P.H.O.L. - Hamilton	4895	286	39	12	337	117	4748	164	4729	10	1	0	0	0	4729	68	4708	139	4134	339	4109	0
P.H.O.L. - Peterborough	1158	66	4	1	71	10	1149	33	1148	3	0	0	0	0	1147	10	1143	47	893	73	886	0
St. Joseph's - Hamilton	26968	0	0	1617	1617	806	26968	1273	26968	119	6	26	0	0	26968	270	26968	461	26968	1266	0	0
Province of Ontario	93800	2570	465	3466	6501	2607	92592	4180	70183	260	18	74	53	5	69340	722	69781	1712	64174	3787	33589	141
Manitoba	18237	174	134	1339	1647	889	17844	983	3679	48	8	4	8	0	3679	56	2630	56	3679	488	2365	76
Regina	12525	43	26	1193	1262	663	12534	1042	4993	148	12	6	30	0	4993	84	4916	205	4993	784	4993	147
Saskatoon	4455	0	0	318	318	235	4455	182	4519	98	12	6	7	0	4519	66	4522	27	4519	530	4519	45
Province of Saskatchewan	16980	43	26	1511	1580	898	16989	1224	9512	246	24	12	37	0	9512	150	9438	232	9512	1314	9512	192
Province of Alberta	65912	1738	1287	1346	4371	3413	58465	0	58465	491	96	97	261	0	58465	734	58465	1611	58465	5325	58465	1703
Prairies	101129	1955	1447	4196	7598	5200	93298	2207	71656	785	128	113	306	0	71656	940	70533	1899	71656	7127	70342	1971
British Columbia	72412	277	244	1849	4088	2571	72054	2755	17269	183	56	37	52	80	17266	146	17201	666	16540	1689	7556	309
Yukon	6806	4	8	55	73	45	6806	23	N.A.	N.A.	N.A.	N.A.	N.A.	N.A.	N.A.	N.A.	N.A.	N.A.	N.A.	N.A.	N.A.	N.A.
Northwest Territories	1412	90	19	1	110	191	1401	0	1401	14	2	13	13	0	1401	21	1401	86	1401	174	1401	74
Nunavut	759	5	14	42	61	67	756	42	756	24	3	1	5	0	756	19	756	15	756	106	181	17
Territories	8977	99	41	98	244	303	8963	65	2157	38	5	14	18	0	2157	40	2157	101	2157	280	1582	91
CANADA	405787	4973	2261	23915	32873	22837	389061	18826	193319	1652	224	291	475	85	192555	2625	190742	4888	167234	13611	138629	2948

Specimens from YT, NT and NU are sent to reference laboratories in other provinces and reported results reflect specimens identified as originating from YT, NT or NU.

Results from British Columbia comprise of specimens from the following sites: BC Children's and Women's Hospital, Children's and Women's Hospital Laboratory, Fraser Health Medical Microbiology Laboratory, Island Health, Providence Health Care, Powell River Hospital, St. Paul's Hospital, Vancouver General Hospital, Victoria General Hospital, Victoria Coastal Health, BCCDC P

Delays in the reporting of data may cause data to change retrospectively.

Due to reporting delays, the sum of weekly report totals do not add up to cumulative totals.

For BC, only data from subtyped influenza A specimens are included in the weekly number of influenza detections and so the sum of A(H1N1)pdm09, A(H3), and A(UnS) positive results may not equal the sum of total Flu A positive results.

Figure 1: Number positive laboratory tests for other respiratory viruses by report week, Canada, 2019-20

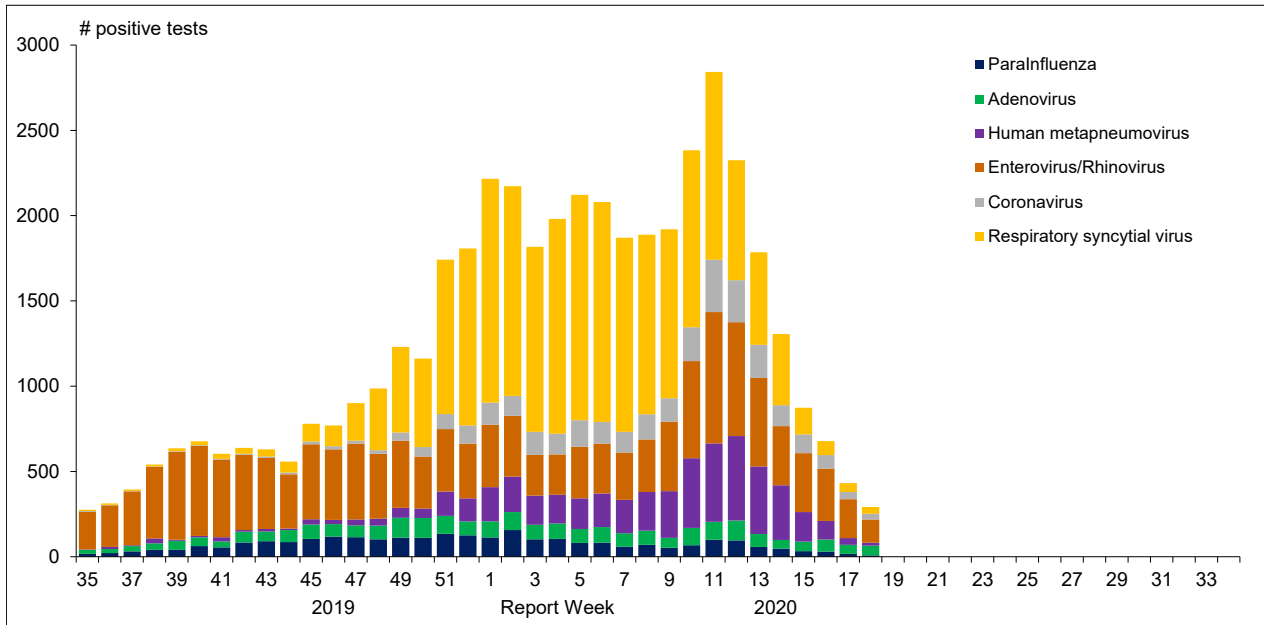


Figure 2 : Positive Influenza Tests (%) in Canada by Region by Week of Report

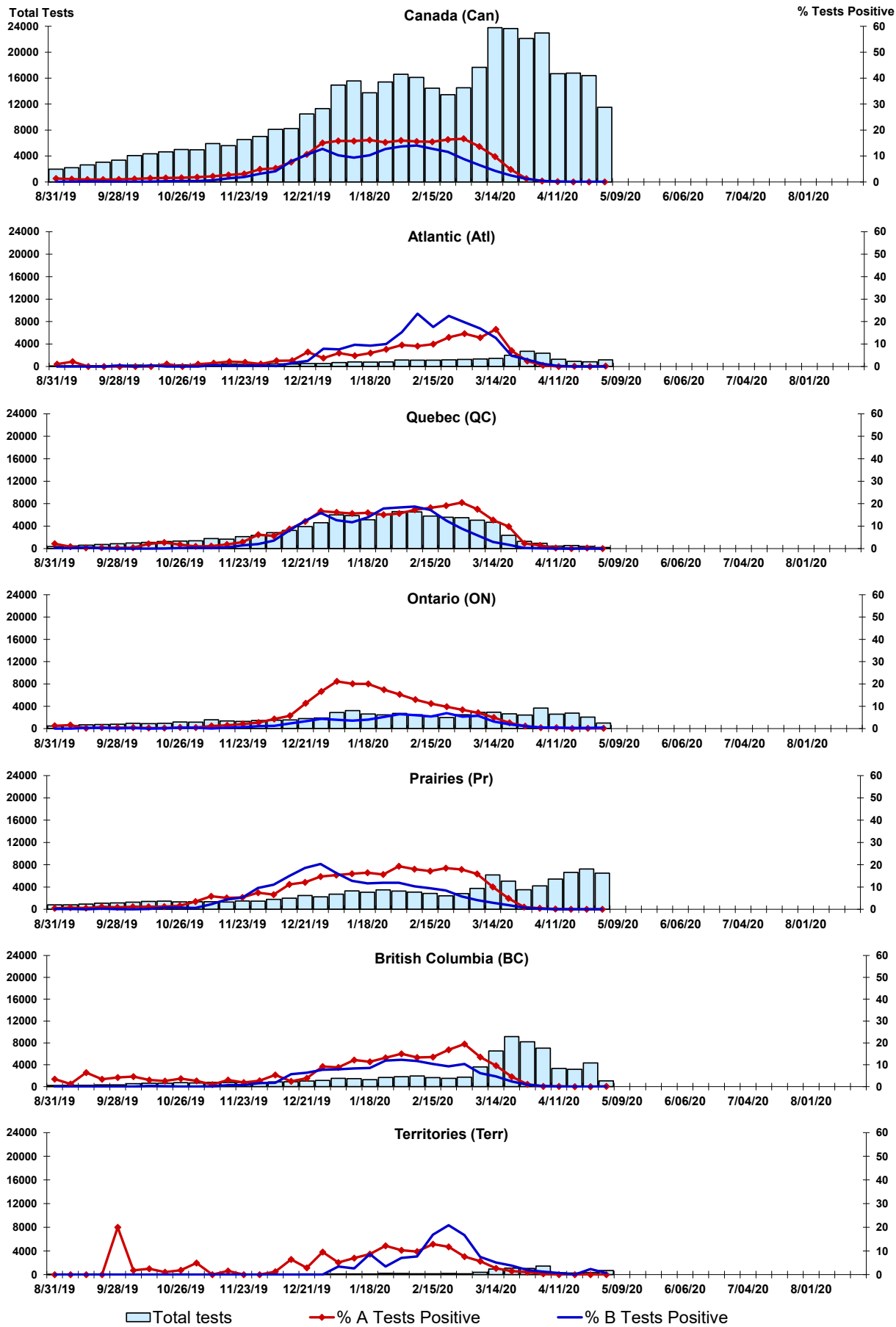


Figure 3: Positive Respiratory syncytial virus (RSV) Tests (%) in Canada by Region by Week of Report

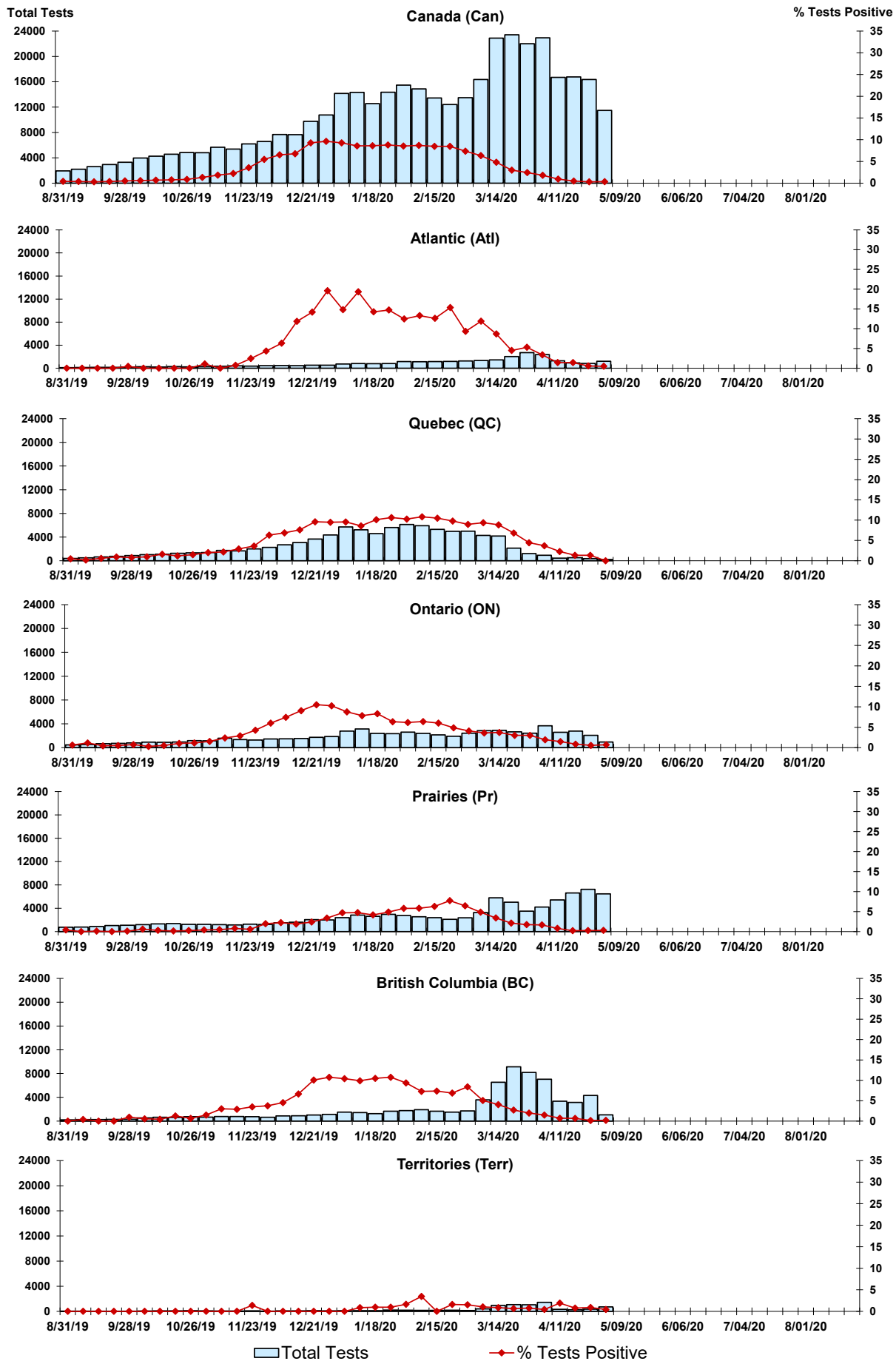


Figure 4: Positive Parainfluenza (PIV) Tests (%) in Canada by Region by Week of Report

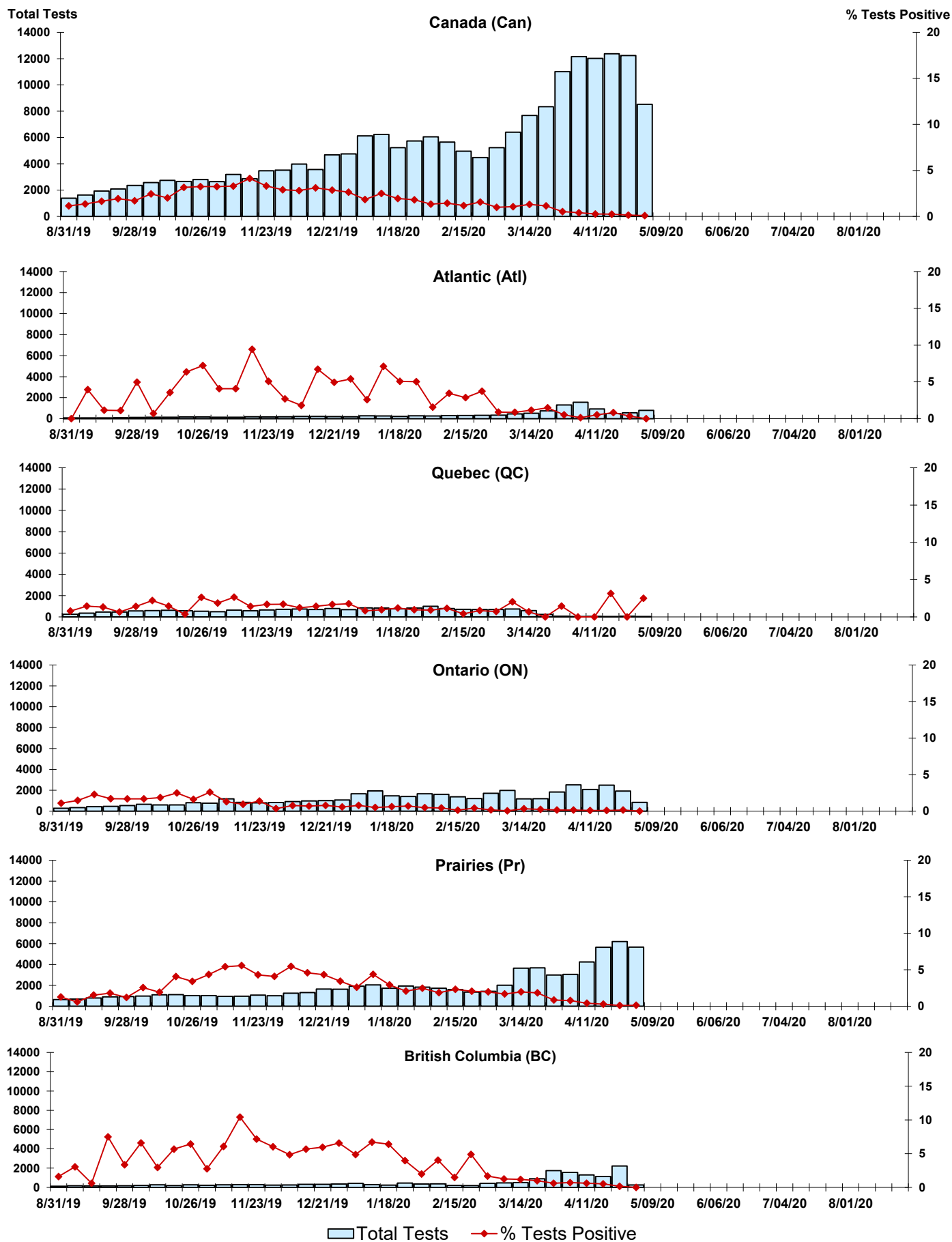


Figure 5: Positive Adenovirus (adeno) Tests (%) in Canada by Region by Week of Report

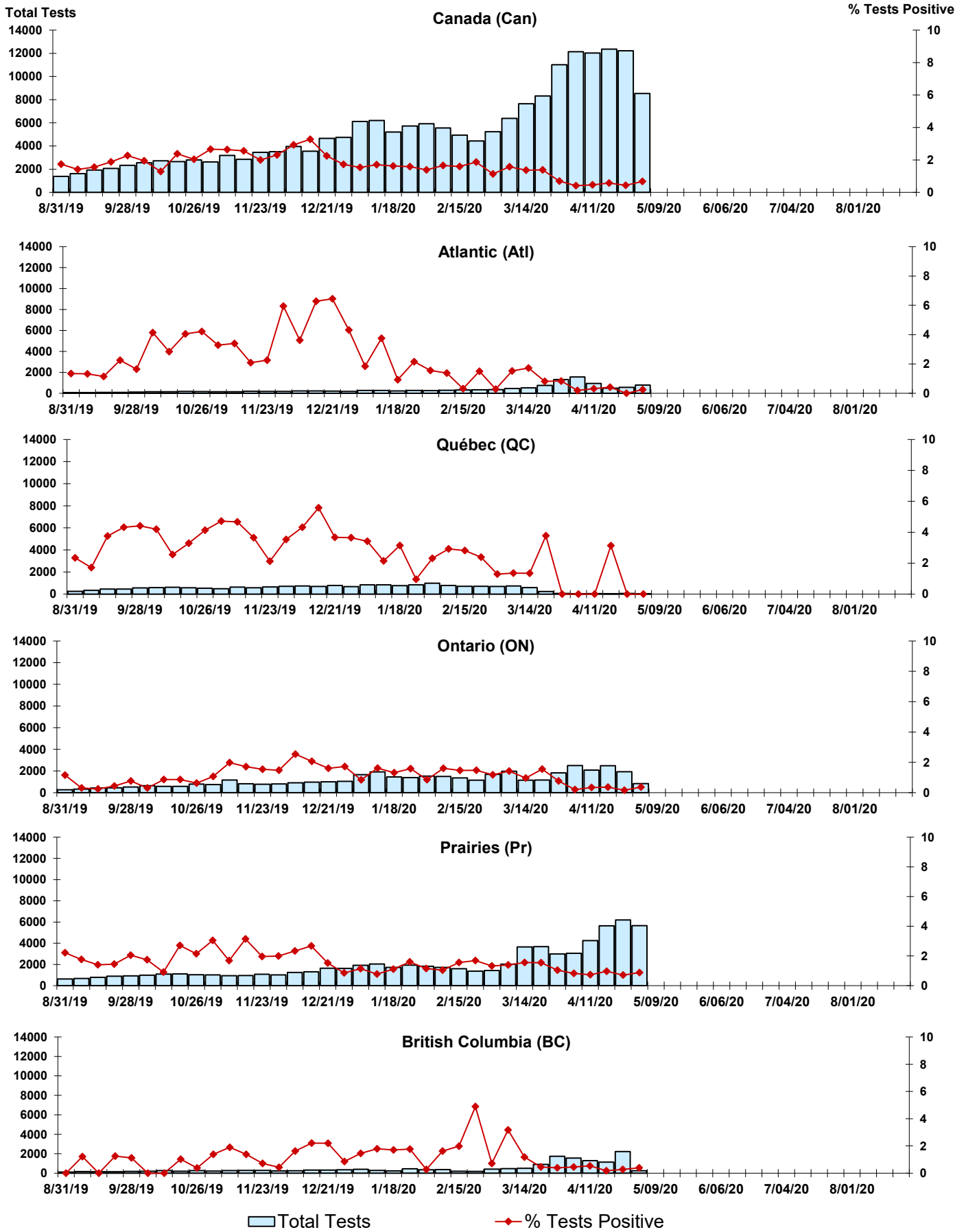


Figure 6: Positive human metapneumovirus (hMPV) Tests (%) in Canada by Region by Week of Report

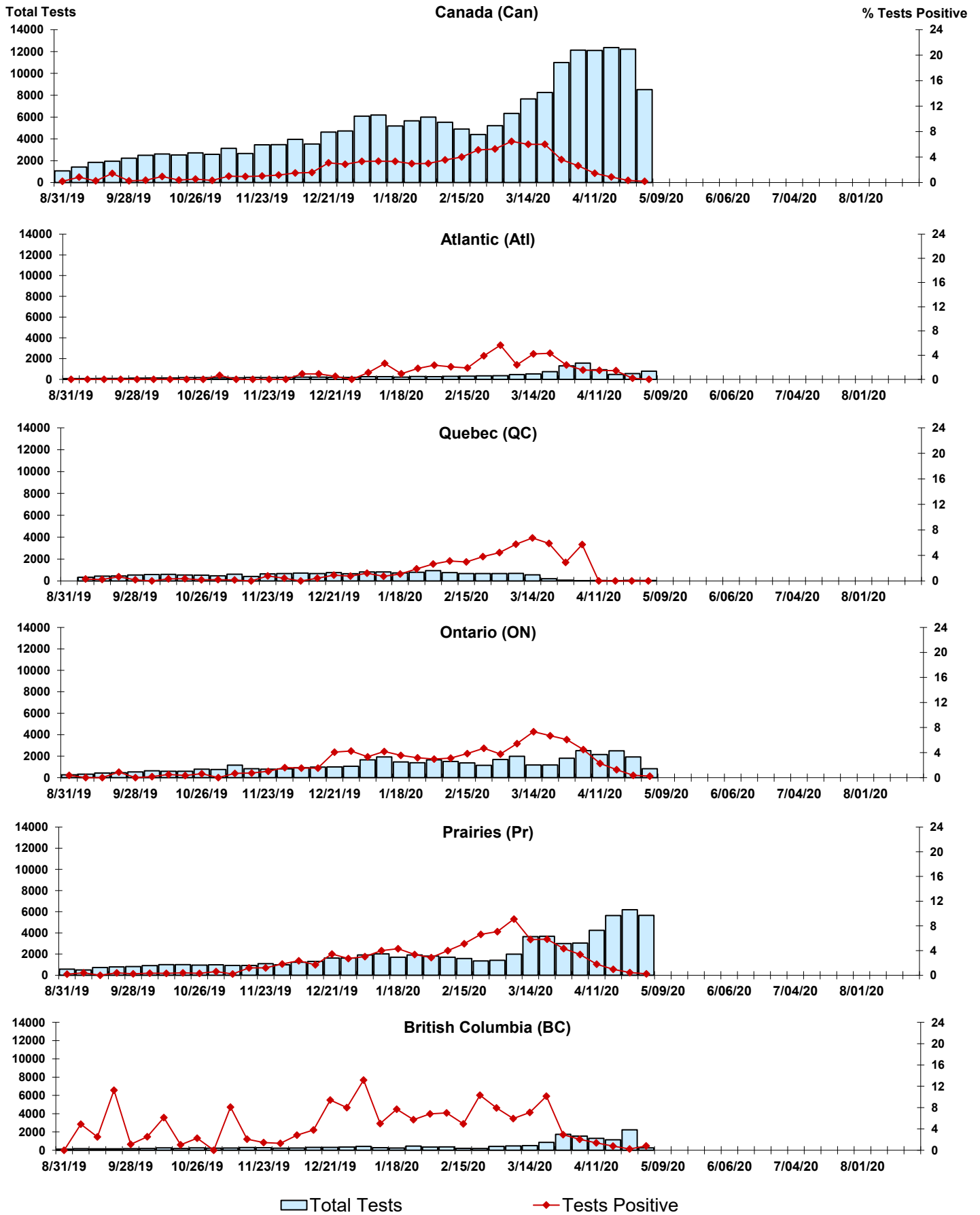


Figure 7: Positive Enterovirus/Rhinovirus (entero/rhino) Tests (%) in Canada by Region by Week of Report

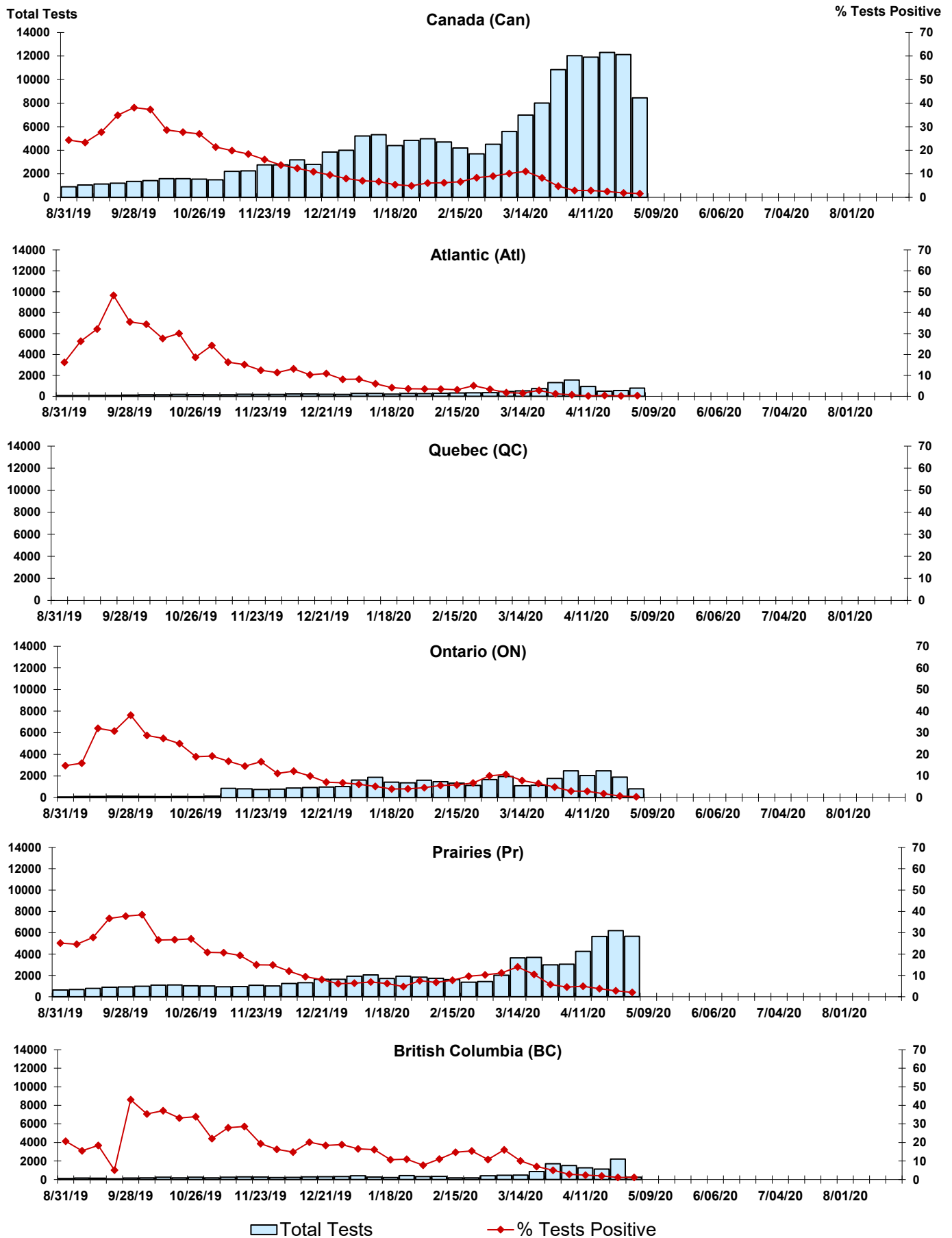
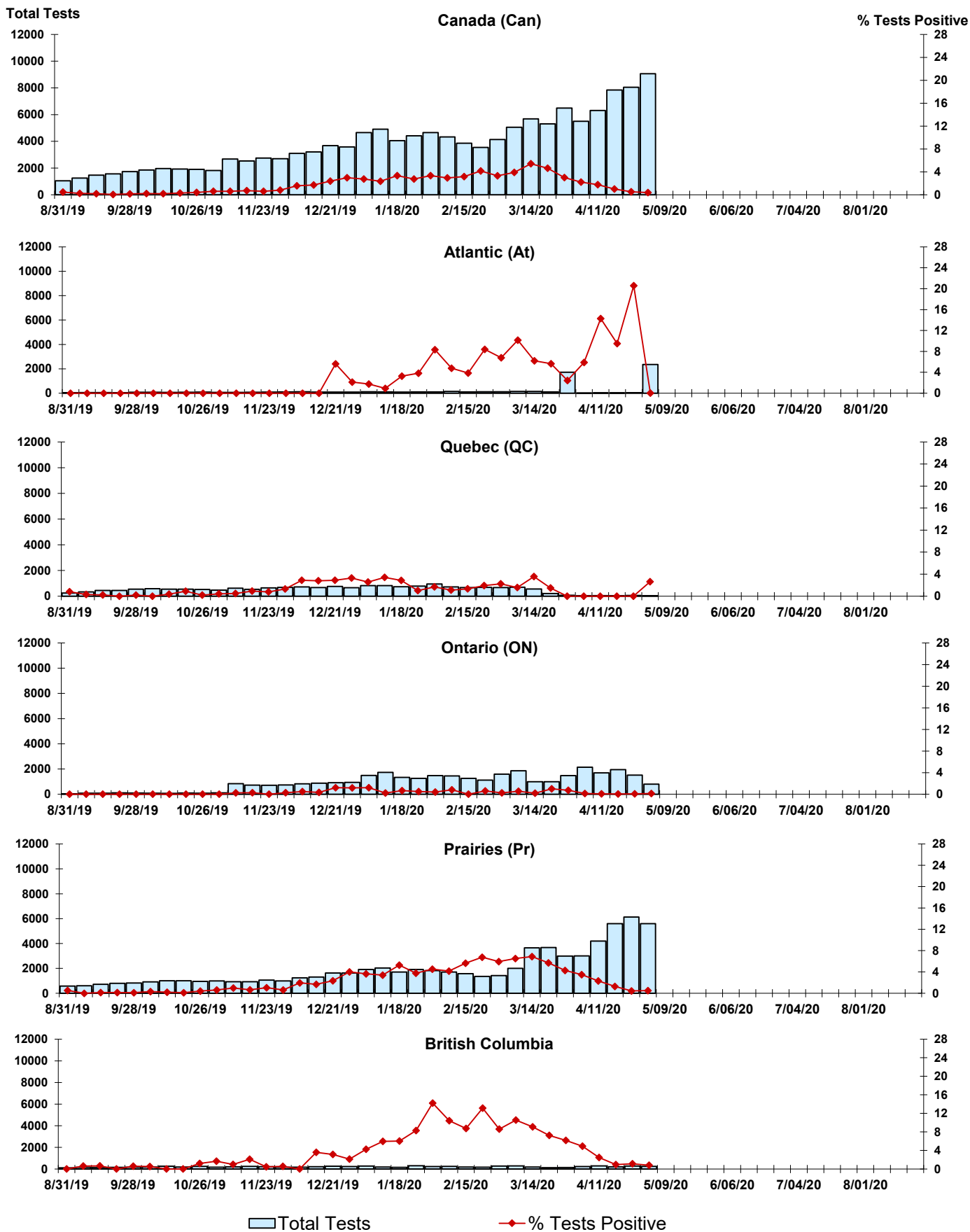


Figure 8: Positive Coronavirus (coron) Tests (%) in Canada by Region by Week of Report



Abbreviations:

A(H1N1)pdm09: Influenza A(H1N1)pdm09

A(H3): Influenza A(H3N2)

A (UnS): Influenza A (Unsubtyped)

Adeno: Adenovirus

CHEO: Children's Hospital of Eastern Ontario

Coron: Coronavirus

Entero: Enterovirus

hMPV: human metapneumovirus

HSC: Health Sciences Centre

N.A.: Not Applicable

P.H.L.: Public Health Laboratory

P.H.O.L.: Public Health Ontario Laboratory

PIV: Parainfluenza

Rhino: Rhinovirus

RSV: Respiratory syncytial virus

UHN: University Health Network

Notes:

Specimens from Yukon (YT), Northwest Territories (NT) and Nunavut (NU) are sent to reference laboratories in other provinces. Results reported for the Territories reflect the number of specimens that are identified as originating from YT, NT or NU.

Delays in the reporting of data may cause data to change retrospectively.

Due to reporting delays, the sum of weekly report totals do not add up to cumulative totals.

