

# Respiratory Virus Report, Week 21 - ending May 23, 2020

The Respiratory Virus Detection Surveillance System collects data from select laboratories across Canada on the number of tests performed and the number of tests positive for influenza and other respiratory viruses. Data are reported on a weekly basis year-round to the Centre for Immunization and Respiratory Infectious Diseases (CIRID), Public Health Agency of Canada. These data are also summarized in the weekly FluWatch report.

**In this Respiratory Virus Report, the number of detections of coronavirus reflects only seasonal human coronaviruses, not the novel pandemic coronavirus (SARS-CoV2) that causes COVID-19. For information on COVID-19, see the [Coronavirus disease \(COVID-19\): Outbreak](#)**

**Table 1: Respiratory Virus Detections/Isolations for the week ending May 23, 2020 (Reporting Week 202021)**

Reporting Laboratory	Flu Tested	A(H1N1)pdm09 Positive	A(H3) Positive	A(UnS) Positive	Total Flu A Positive	Total Flu B Positive	RSV Tested	RSV Positive	PIV Tested	PIV 1 Positive	PIV 2 Positive	PIV 3 Positive	PIV 4 Positive	Other PIV Positive	Adeno Tested	Adeno Positive	hMPV Tested	hMPV Positive	Entero/Rhino Tested	Entero/Rhino Positive	Coron Tested	Coron Positive
Newfoundland	0	0	0	0	0	0	0	0	0	0	0	0	0	0	0	0	0	0	0	0	N.A.	N.A.
Prince Edward Island	5	0	0	0	0	0	5	0	0	0	0	0	0	0	0	0	0	0	0	0	0	0
Nova Scotia	24	0	0	0	0	0	24	0	21	0	0	0	0	0	21	1	21	0	21	0	21	0
New Brunswick	46	0	0	0	0	0	46	0	13	0	0	0	0	0	13	0	13	0	13	0	13	0
<b>Atlantic</b>	<b>75</b>	<b>0</b>	<b>0</b>	<b>0</b>	<b>0</b>	<b>0</b>	<b>75</b>	<b>0</b>	<b>34</b>	<b>0</b>	<b>0</b>	<b>0</b>	<b>0</b>	<b>0</b>	<b>34</b>	<b>1</b>	<b>34</b>	<b>0</b>	<b>34</b>	<b>0</b>	<b>34</b>	<b>0</b>
Région Nord-Est	20	0	0	0	0	0	17	0	0	0	0	0	0	0	0	0	0	0	N.A.	N.A.	0	0
Québec-Chaudière-Appalaches	0	0	0	0	0	0	9	0	8	0	0	0	0	0	8	0	8	0	N.A.	N.A.	8	0
Centre-du-Québec	14	0	0	0	0	0	12	0	11	0	0	0	0	0	11	0	11	0	N.A.	N.A.	11	0
Montréal-Laval	5	0	0	0	0	0	5	0	0	0	0	0	0	0	0	0	0	0	N.A.	N.A.	0	0
Ouest du Québec	5	0	0	0	0	0	5	0	0	0	0	0	0	0	0	0	0	0	N.A.	N.A.	0	0
Montérégie	0	0	0	0	0	0	0	0	0	0	0	0	0	0	0	0	0	0	N.A.	N.A.	0	0
<b>Province of Québec</b>	<b>44</b>	<b>0</b>	<b>0</b>	<b>0</b>	<b>0</b>	<b>0</b>	<b>48</b>	<b>0</b>	<b>19</b>	<b>0</b>	<b>0</b>	<b>0</b>	<b>0</b>	<b>0</b>	<b>19</b>	<b>0</b>	<b>19</b>	<b>0</b>	<b>N.A.</b>	<b>N.A.</b>	<b>19</b>	<b>0</b>
P.H.O.L. - Ottawa	21	0	0	0	0	0	21	0	21	0	0	0	0	0	21	0	21	0	21	0	21	0
CHEO - Ottawa	208	0	0	0	0	6	208	3	15	0	0	0	0	0	15	0	15	0	15	1	15	0
P.H.O.L. - Kingston	29	0	0	0	0	0	27	0	27	0	0	0	0	0	27	0	27	0	27	0	27	0
UHN / Mount Sinai Hospital	11	0	0	0	0	0	11	0	11	0	0	0	0	0	0	0	11	0	0	0	N.A.	N.A.
P.H.O.L. - Toronto	208	1	0	0	1	0	208	0	208	0	0	0	0	0	208	0	208	0	208	0	208	0
Sick Kids Hospital - Toronto	0	0	0	0	0	0	0	0	0	0	0	0	0	0	0	0	0	0	0	0	0	0
Sunnybrook & Women's College HSC	0	0	0	0	0	0	0	0	0	0	0	0	0	0	0	0	0	0	0	0	0	0
P.H.O.L. - Sault Ste. Marie	16	0	0	0	0	0	16	0	16	0	0	0	0	0	16	0	16	0	16	0	16	0
P.H.O.L. - Timmins	2	0	0	0	0	0	2	0	2	0	0	0	0	0	2	0	2	0	2	0	2	0
St. Joseph's - London	37	0	0	0	0	0	37	0	37	0	0	0	0	0	37	0	37	0	37	0	37	0
P.H.O.L. - London	39	0	0	0	0	0	39	0	39	0	0	0	0	0	39	0	38	0	39	0	38	0
P.H.O.L. - Orillia	13	0	0	0	0	0	13	0	13	0	0	0	0	0	13	0	13	0	13	0	13	0
P.H.O.L. - Thunder Bay	43	0	0	0	0	0	43	1	43	0	0	0	0	0	43	1	43	0	43	2	43	0
P.H.O.L. - Sudbury	5	0	0	0	0	0	5	0	5	0	0	0	0	0	5	0	5	0	5	0	5	0
P.H.O.L. - Hamilton	40	0	0	0	0	0	39	0	39	0	0	0	0	0	39	0	39	0	39	0	39	0
P.H.O.L. - Peterborough	14	0	0	0	0	0	14	0	14	0	0	0	0	0	14	0	14	0	14	0	14	0
St. Joseph's - Hamilton	598	0	0	0	0	0	598	0	598	0	0	0	0	0	598	1	598	0	598	5	0	0
<b>Province of Ontario</b>	<b>1284</b>	<b>1</b>	<b>0</b>	<b>0</b>	<b>1</b>	<b>6</b>	<b>1281</b>	<b>4</b>	<b>1088</b>	<b>0</b>	<b>0</b>	<b>0</b>	<b>0</b>	<b>0</b>	<b>1077</b>	<b>2</b>	<b>1087</b>	<b>0</b>	<b>1040</b>	<b>8</b>	<b>441</b>	<b>0</b>
Province of Manitoba	721	0	0	1	1	0	721	3	59	0	1	0	0	0	59	0	51	0	59	0	0	0
Regina	140	0	0	0	0	0	140	0	119	0	0	0	0	0	119	2	119	0	119	15	119	0
Saskatoon	0	0	0	0	0	0	0	0	0	0	0	0	0	0	0	0	0	0	0	0	0	0
Province of Saskatchewan	140	0	0	0	0	0	140	0	119	0	0	0	0	0	119	2	119	0	119	15	119	0
Province of Alberta	4775	0	0	0	0	0	4773	0	4773	0	0	0	2	0	4773	33	4773	5	4773	111	4773	3
<b>Prairies</b>	<b>5636</b>	<b>0</b>	<b>0</b>	<b>1</b>	<b>1</b>	<b>0</b>	<b>5634</b>	<b>3</b>	<b>4951</b>	<b>0</b>	<b>1</b>	<b>0</b>	<b>2</b>	<b>0</b>	<b>4951</b>	<b>35</b>	<b>4943</b>	<b>5</b>	<b>4951</b>	<b>126</b>	<b>4892</b>	<b>3</b>
<b>British Columbia</b>	<b>2294</b>	<b>0</b>	<b>0</b>	<b>0</b>	<b>0</b>	<b>1</b>	<b>2293</b>	<b>0</b>	<b>1421</b>	<b>0</b>	<b>0</b>	<b>0</b>	<b>0</b>	<b>2</b>	<b>1421</b>	<b>2</b>	<b>1421</b>	<b>2</b>	<b>1409</b>	<b>11</b>	<b>96</b>	<b>1</b>
Yukon	85	0	0	0	0	0	85	0	N.A.	N.A.	N.A.	N.A.	N.A.	N.A.	N.A.	N.A.	N.A.	N.A.	N.A.	N.A.	N.A.	N.A.
Northwest Territories	20	0	0	0	0	0	20	0	20	0	0	0	0	0	20	0	20	1	20	1	20	0
Nunavut	50	0	0	0	0	1	50	1	50	1	0	0	0	0	50	0	50	0	50	9	4	2
<b>Territories</b>	<b>155</b>	<b>0</b>	<b>0</b>	<b>0</b>	<b>0</b>	<b>1</b>	<b>155</b>	<b>1</b>	<b>70</b>	<b>1</b>	<b>0</b>	<b>0</b>	<b>0</b>	<b>0</b>	<b>70</b>	<b>0</b>	<b>70</b>	<b>1</b>	<b>70</b>	<b>10</b>	<b>24</b>	<b>2</b>
<b>CANADA</b>	<b>9488</b>	<b>1</b>	<b>0</b>	<b>1</b>	<b>2</b>	<b>8</b>	<b>9486</b>	<b>8</b>	<b>7583</b>	<b>1</b>	<b>1</b>	<b>0</b>	<b>2</b>	<b>2</b>	<b>7572</b>	<b>40</b>	<b>7574</b>	<b>8</b>	<b>7504</b>	<b>155</b>	<b>5506</b>	<b>6</b>

Specimens from Yukon (YT), Northwest Territories (NT) and Nunavut (NU) are sent to reference laboratories in other provinces and reported results reflect specimens identified as originating from YT, NT or NU.

Results from British Columbia comprise of specimens from the following sites: BC Children's and Women's Hospital, Children's and Women's Hospital Laboratory, Fraser Health Medical Microbiology Laboratory, Island Health, Providence Health Care, Powell River Hospital, St. Paul's Hospital, Vancouver General Hospital, Victoria General Hospital, Victoria Coastal Health, BCCDC Public Health Laboratory, Interior Health Authority sites and Northern Health Authority sites.

Delays in the reporting of data may cause data to change retrospectively.

For BC, only data from subtyped influenza A specimens are included in the weekly number of influenza detections and so the sum of A(H1N1)pdm09, A(H3), and A(UnS) positive results may not equal the sum of total Flu A positive results.

**Table 2: Respiratory Virus Detections/Isolations for the period August 31, 2019 - May 23, 2020 (Reporting Weeks 201935-202021)**

Reporting Laboratory	Flu Tested	A(H1N1)pdm09 Positive	A(H3) Positive	A(UnS) Positive	Total Flu A Positive	Total Flu B Positive	RSV Tested	RSV Positive	PIV Tested	PIV 1 Positive	PIV 2 Positive	PIV 3 Positive	PIV 4 Positive	Other PIV Positive	Adeno Tested	Adeno Positive	hMPV Tested	hMPV Positive	Entero/Rhino Tested	Entero/Rhino Positive	Coron Tested	Coron Positive
Newfoundland	10859	8	33	166	207	512	10859	330	10859	147	2	11	0	0	10859	112	10859	189	10859	353	N.A.	N.A.
Prince Edward Island	1267	0	0	144	144	78	1267	146	48	1	0	0	1	0	48	0	46	0	48	16	48	2
Nova Scotia	6588	3	2	196	201	248	6690	625	559	13	1	3	5	0	593	12	593	11	593	77	606	14
New Brunswick	11693	61	29	957	1047	1292	11634	1077	2361	53	7	0	13	0	2361	62	2361	16	2361	286	6361	125
<b>Atlantic</b>	<b>30407</b>	<b>72</b>	<b>64</b>	<b>1463</b>	<b>1599</b>	<b>2130</b>	<b>30450</b>	<b>2178</b>	<b>13827</b>	<b>214</b>	<b>10</b>	<b>14</b>	<b>19</b>	<b>0</b>	<b>13861</b>	<b>186</b>	<b>13859</b>	<b>216</b>	<b>13861</b>	<b>732</b>	<b>7015</b>	<b>141</b>
Région Nord-Est	9203	0	0	1136	1136	1323	7887	644	0	0	0	0	0	0	0	0	0	0	N.A.	N.A.	0	0
Québec-Chaudière-Appalaches	13991	0	0	1900	1900	1829	13879	1318	2700	31	4	3	14	0	2748	80	2145	24	N.A.	N.A.	2088	35
Centre-du-Québec	18981	0	0	2909	2909	2395	15285	1385	42	0	0	1	0	0	42	0	42	0	N.A.	N.A.	42	1
Montréal-Laval	37918	0	0	4021	4021	2411	36764	2398	16754	144	4	35	13	0	16754	514	16291	270	N.A.	N.A.	16601	261
Ouest du Québec	12565	0	0	1745	1745	1278	11717	1089	0	0	0	0	0	0	0	0	0	0	N.A.	N.A.	0	0
Montérégie	8520	0	0	1133	1133	791	8292	610	0	0	0	0	0	0	0	0	0	0	N.A.	N.A.	0	0
<b>Province of Québec</b>	<b>101178</b>	<b>0</b>	<b>0</b>	<b>12844</b>	<b>12844</b>	<b>10027</b>	<b>93824</b>	<b>7444</b>	<b>19496</b>	<b>175</b>	<b>8</b>	<b>39</b>	<b>27</b>	<b>0</b>	<b>19544</b>	<b>594</b>	<b>18478</b>	<b>294</b>	<b>N.A.</b>	<b>N.A.</b>	<b>18731</b>	<b>297</b>
P.H.O.L. - Ottawa	1811	108	61	3	172	71	1802	86	1777	2	0	0	0	0	1777	18	1763	61	1621	78	1606	0
CHEO - Ottawa	9421	1	0	659	660	458	9421	686	951	17	0	5	10	5	951	20	951	20	954	167	942	28
P.H.O.L. - Kingston	1415	62	27	4	93	23	1391	68	1387	1	0	0	0	0	1387	17	1378	60	1218	63	1205	0
UHN / Mount Sinai Hospital	11996	9	0	651	660	218	11996	348	608	7	2	10	2	0	0	0	685	16	0	0	N.A.	N.A.
P.H.O.L. - Toronto	17479	1349	144	36	1529	355	17015	416	16936	34	0	3	0	0	16936	154	16716	440	14392	797	14152	0
Sick Kids Hospital - Toronto	2407	104	13	99	216	168	1936	208	1936	26	5	8	27	0	1936	53	1936	48	1936	366	1936	92
Sunnybrook & Women's College HSC	3456	0	0	124	124	25	3456	64	3456	9	0	17	0	0	3197	11	3316	35	3316	66	120	0
P.H.O.L. - Sault Ste. Marie	554	20	0	0	20	8	537	28	538	1	0	0	0	0	538	5	535	33	487	14	484	0
P.H.O.L. - Timmins	683	65	3	2	70	12	651	32	654	0	0	0	0	0	654	1	651	30	626	5	621	0
St. Joseph's - London	4609	0	0	238	238	114	4609	334	1575	19	4	3	14	0	1575	24	1575	33	798	111	745	22
P.H.O.L. - London	5243	309	112	9	430	145	5208	250	5194	8	0	0	0	0	5196	49	5155	180	4738	296	4687	0
P.H.O.L. - Orillia	1634	81	31	3	115	33	1631	89	1628	4	0	0	0	0	1628	8	1623	50	1437	81	1430	0
P.H.O.L. - Thunder Bay	1230	82	17	9	108	45	1228	64	1228	0	0	1	0	0	1228	15	1217	52	1180	55	1168	0
P.H.O.L. - Sudbury	890	29	14	4	47	15	884	45	885	0	0	1	0	0	885	9	875	14	813	28	802	0
P.H.O.L. - Hamilton	5012	286	39	12	337	117	4864	164	4845	10	1	0	0	0	4845	68	4824	139	4250	339	4225	0
P.H.O.L. - Peterborough	1199	66	4	1	71	10	1190	33	1189	3	0	0	0	0	1188	10	1184	47	934	75	927	0
St. Joseph's - Hamilton	29055	0	0	1617	1617	806	29055	1275	29055	119	6	26	0	0	29055	271	29055	461	29055	1280	0	0
<b>Province of Ontario</b>	<b>98094</b>	<b>2571</b>	<b>465</b>	<b>3471</b>	<b>6507</b>	<b>2623</b>	<b>96874</b>	<b>4190</b>	<b>73842</b>	<b>260</b>	<b>18</b>	<b>74</b>	<b>53</b>	<b>5</b>	<b>72976</b>	<b>733</b>	<b>73439</b>	<b>1719</b>	<b>67755</b>	<b>3821</b>	<b>35050</b>	<b>142</b>
Manitoba	20482	174	134	1340	1648	889	20089	1006	3876	48	9	4	8	0	3876	58	2791	59	3876	491	2365	76
Regina	13139	43	26	1193	1262	665	13148	1043	5404	148	14	6	30	0	5404	90	5327	205	5404	806	5404	149
Saskatoon	4455	0	0	318	318	235	4455	182	4519	98	12	6	7	0	4519	66	4522	27	4519	530	4519	45
Province of Saskatchewan	17594	43	26	1511	1580	900	17603	1225	9923	246	26	12	37	0	9923	156	9849	232	9923	1336	9923	194
Province of Alberta	81622	1738	1287	1346	4371	3416	74172	0	74172	494	98	98	265	0	74172	834	74172	1625	74172	5637	74172	1721
<b>Prairies</b>	<b>119698</b>	<b>1955</b>	<b>1447</b>	<b>4197</b>	<b>7599</b>	<b>5205</b>	<b>111864</b>	<b>2231</b>	<b>87971</b>	<b>788</b>	<b>133</b>	<b>114</b>	<b>310</b>	<b>0</b>	<b>87971</b>	<b>1048</b>	<b>86812</b>	<b>1916</b>	<b>87971</b>	<b>7464</b>	<b>86460</b>	<b>1991</b>
<b>British Columbia</b>	<b>81165</b>	<b>277</b>	<b>244</b>	<b>1849</b>	<b>4088</b>	<b>2574</b>	<b>80804</b>	<b>2770</b>	<b>22639</b>	<b>184</b>	<b>58</b>	<b>38</b>	<b>52</b>	<b>86</b>	<b>22636</b>	<b>162</b>	<b>22560</b>	<b>687</b>	<b>21867</b>	<b>1747</b>	<b>8132</b>	<b>313</b>
Yukon	7361	4	8	55	73	45	7361	23	N.A.	N.A.	N.A.	N.A.	N.A.	N.A.	N.A.	N.A.	N.A.	N.A.	N.A.	N.A.	N.A.	N.A.
Northwest Territories	1492	90	19	1	110	191	1481	0	1481	14	2	13	13	0	1481	21	1481	87	1481	183	1481	75
Nunavut	995	5	14	42	61	73	992	48	992	27	3	1	6	0	992	20	992	23	992	128	224	31
<b>Territories</b>	<b>9848</b>	<b>99</b>	<b>41</b>	<b>98</b>	<b>244</b>	<b>309</b>	<b>9834</b>	<b>71</b>	<b>2473</b>	<b>41</b>	<b>5</b>	<b>14</b>	<b>19</b>	<b>0</b>	<b>2473</b>	<b>41</b>	<b>2473</b>	<b>110</b>	<b>2473</b>	<b>311</b>	<b>1705</b>	<b>106</b>
<b>CANADA</b>	<b>440390</b>	<b>4974</b>	<b>2261</b>	<b>23922</b>	<b>32881</b>	<b>22868</b>	<b>423650</b>	<b>18884</b>	<b>220248</b>	<b>1662</b>	<b>232</b>	<b>293</b>	<b>480</b>	<b>91</b>	<b>219461</b>	<b>2764</b>	<b>217621</b>	<b>4942</b>	<b>193927</b>	<b>14075</b>	<b>157093</b>	<b>2990</b>

Specimens from YT, NT and NU are sent to reference laboratories in other provinces and reported results reflect specimens identified as originating from YT, NT or NU.

Results from British Columbia comprise of specimens from the following sites: BC Children's and Women's Hospital, Children's and Women's Hospital Laboratory, Fraser Health Medical Microbiology Laboratory, Island Health, Providence Health Care, Powell River Hospital, St. Paul's Hospital, Vancouver General Hospital, Victoria General Hospital, Victoria Coastal Health, BCCDC P

Delays in the reporting of data may cause data to change retrospectively.

Due to reporting delays, the sum of weekly report totals do not add up to cumulative totals.

For BC, only data from subtyped influenza A specimens are included in the weekly number of influenza detections and so the sum of A(H1N1)pdm09, A(H3), and A(UnS) positive results may not equal the sum of total Flu A positive results.

Figure 1: Number positive laboratory tests for other respiratory viruses by report week, Canada, 2019-20

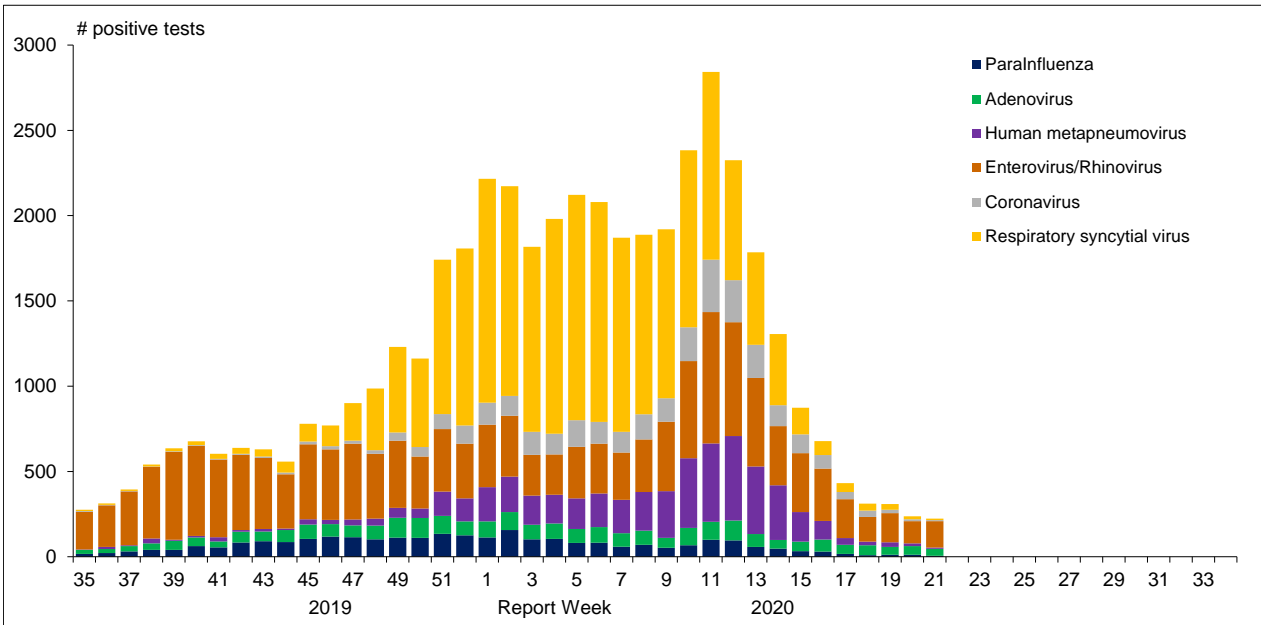


Figure 2 : Positive Influenza Tests (%) in Canada by Region by Week of Report

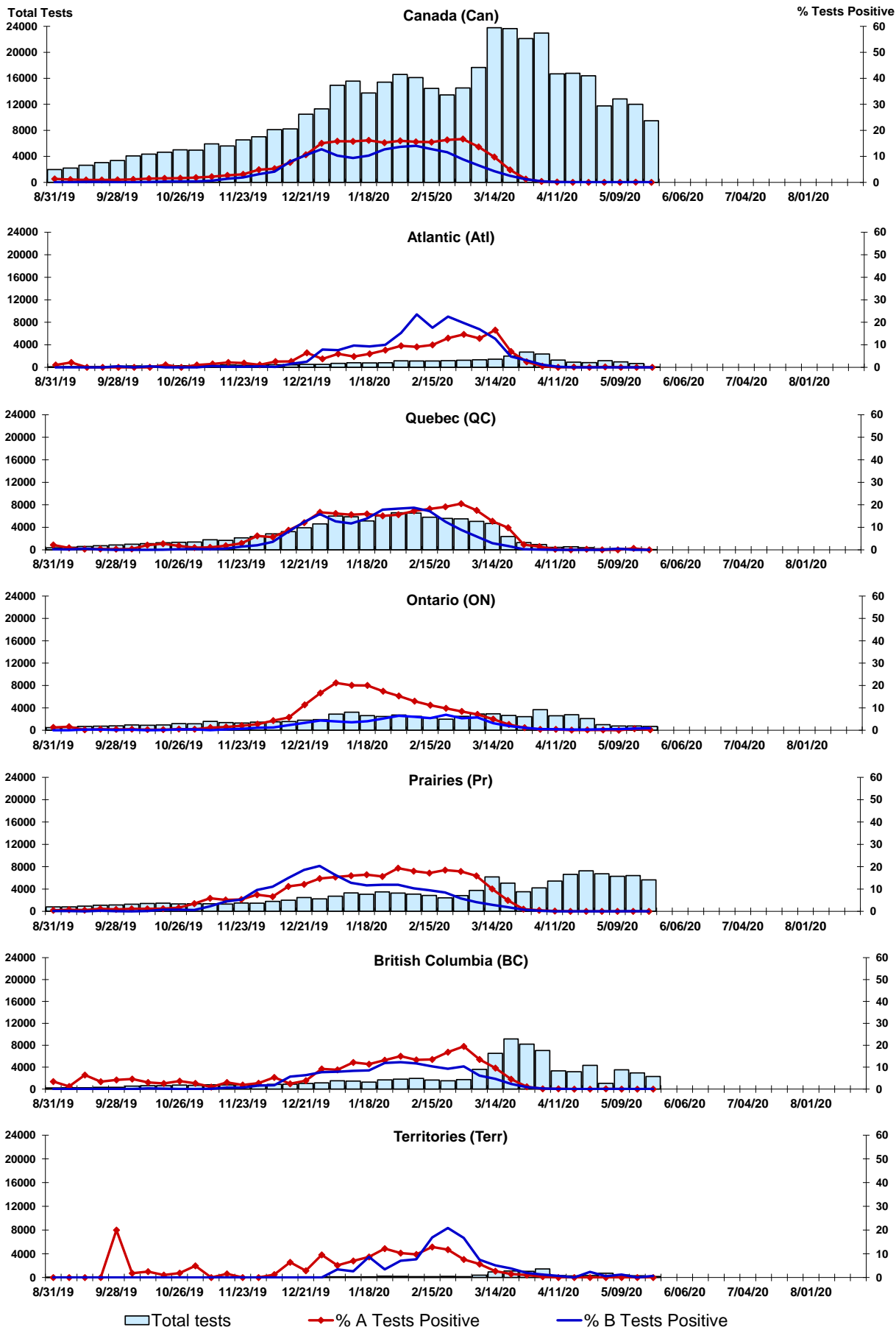


Figure 3: Positive Respiratory syncytial virus (RSV) Tests (%) in Canada by Region by Week of Report

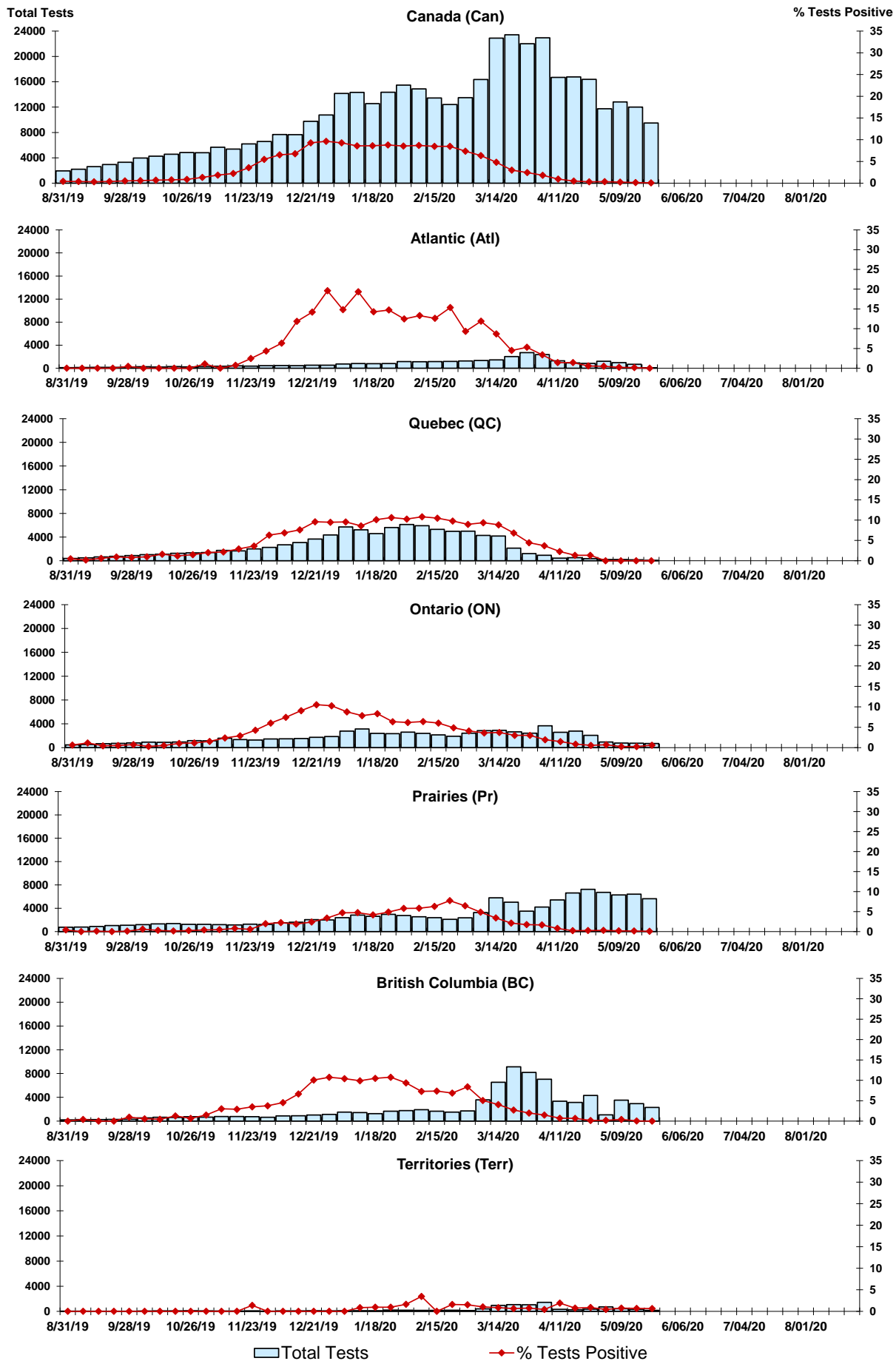


Figure 4: Positive Parainfluenza (PIV) Tests (%) in Canada by Region by Week of Report

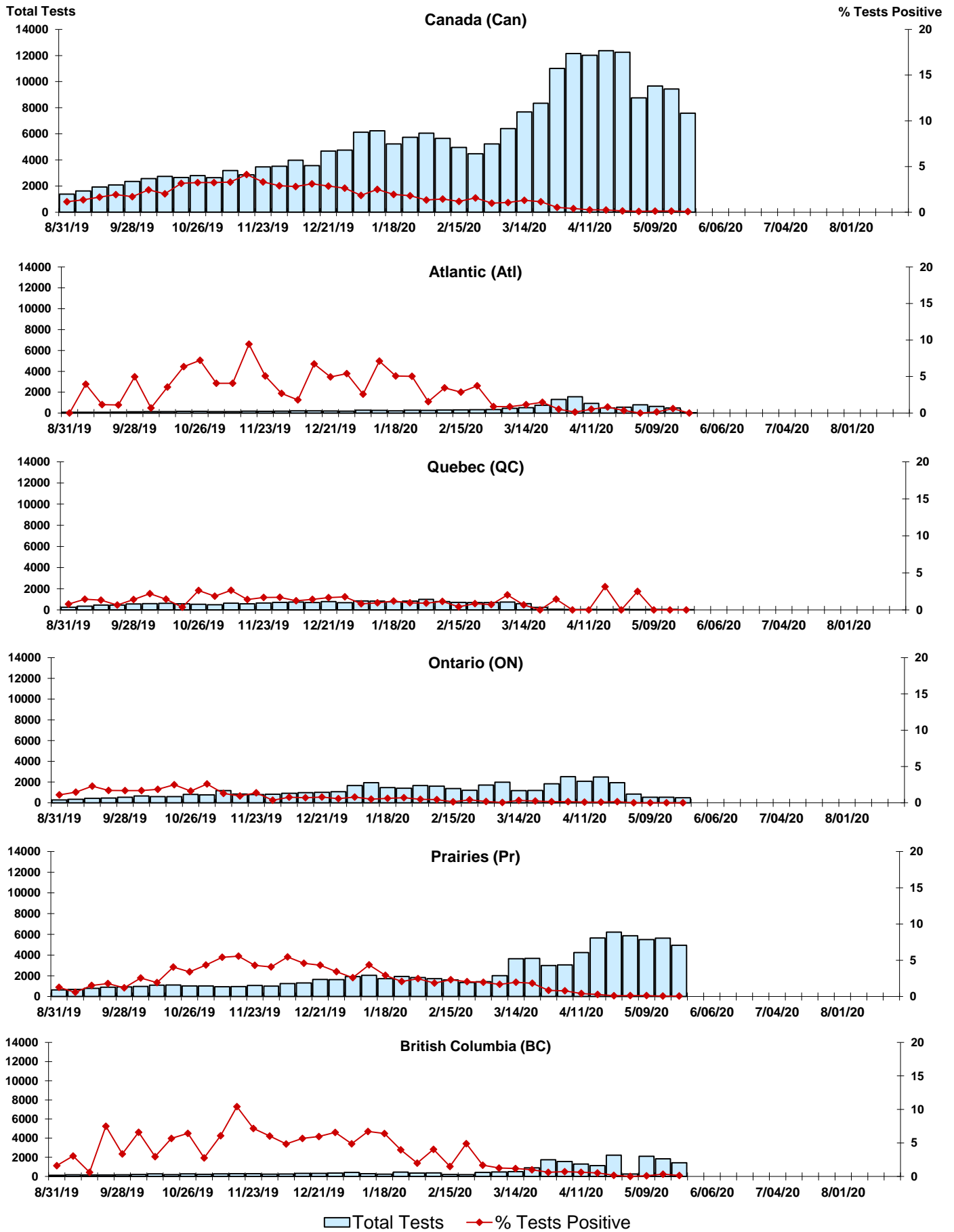


Figure 5: Positive Adenovirus (adeno) Tests (%) in Canada by Region by Week of Report

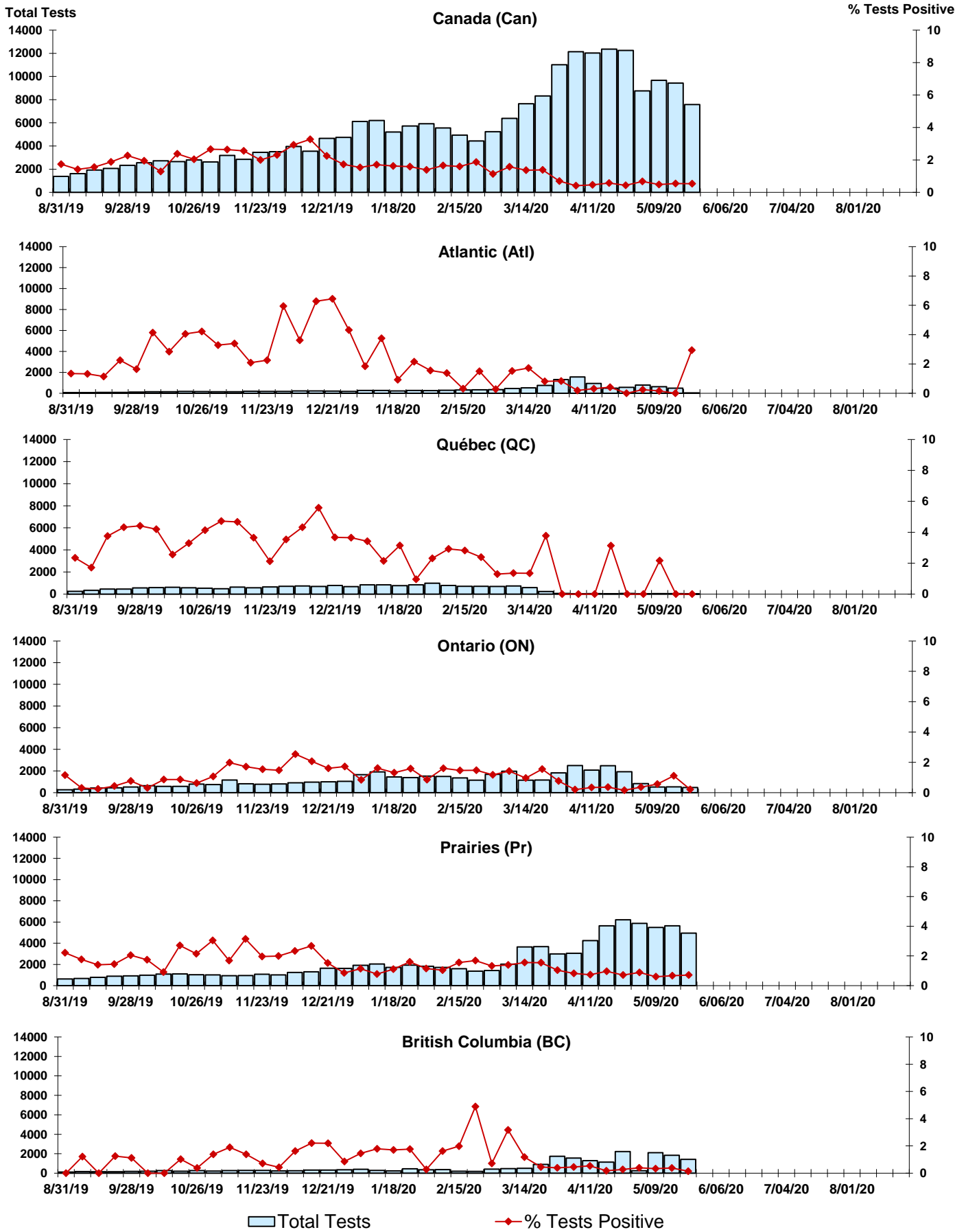


Figure 6: Positive human metapneumovirus (hMPV) Tests (%) in Canada by Region by Week of Report

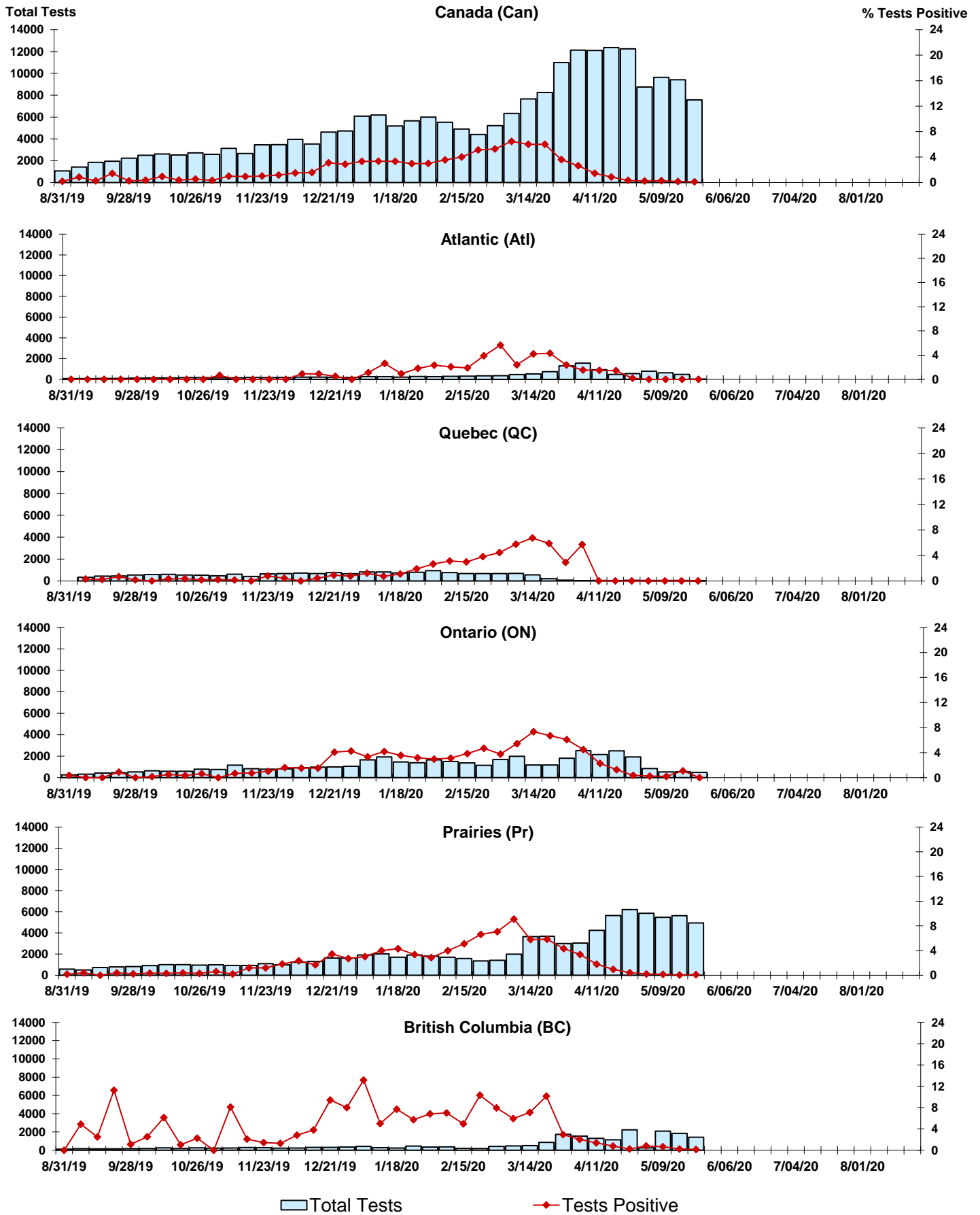




Figure 7: Positive Enterovirus/Rhinovirus (entero/rhino) Tests (%) in Canada by Region by Week of Report

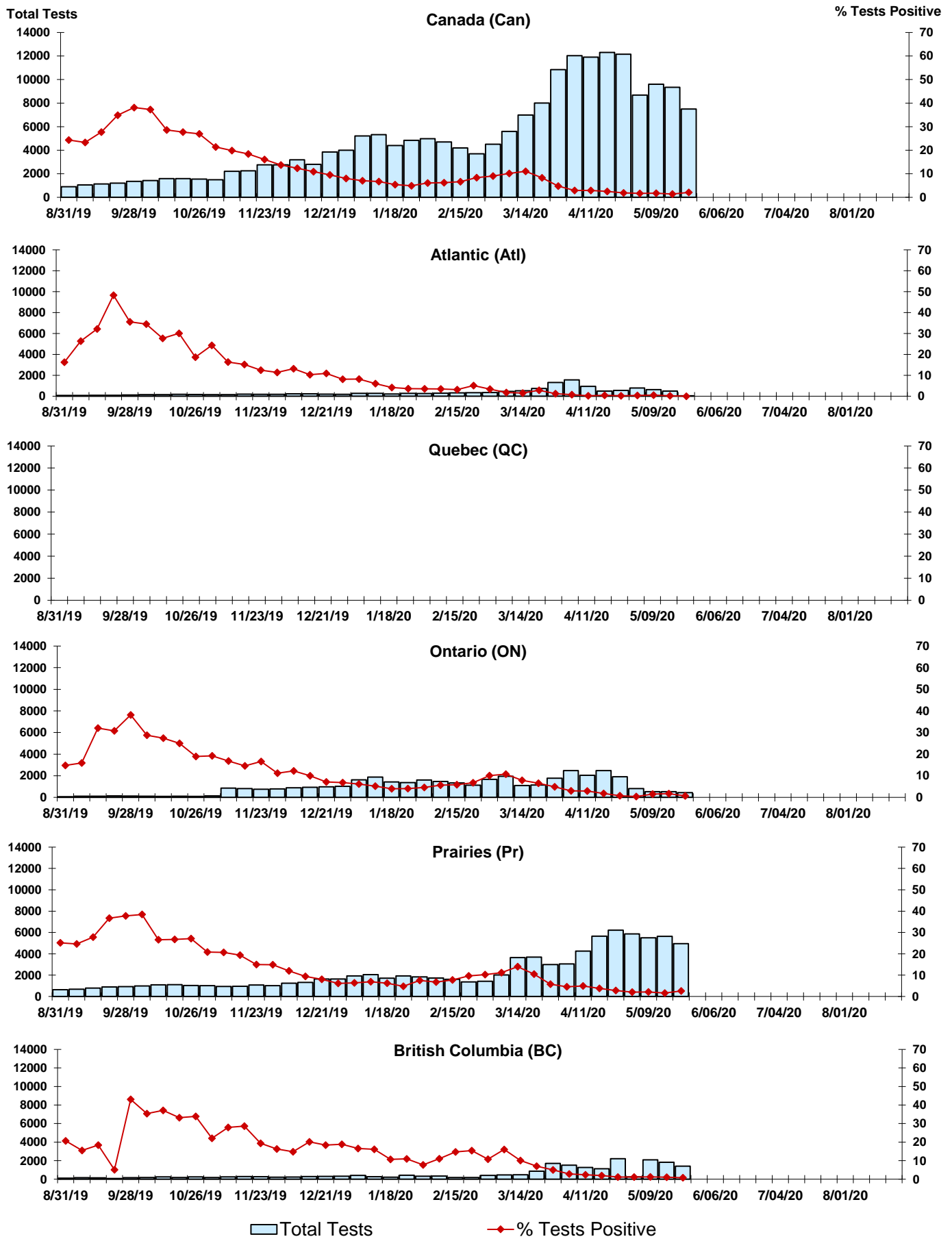
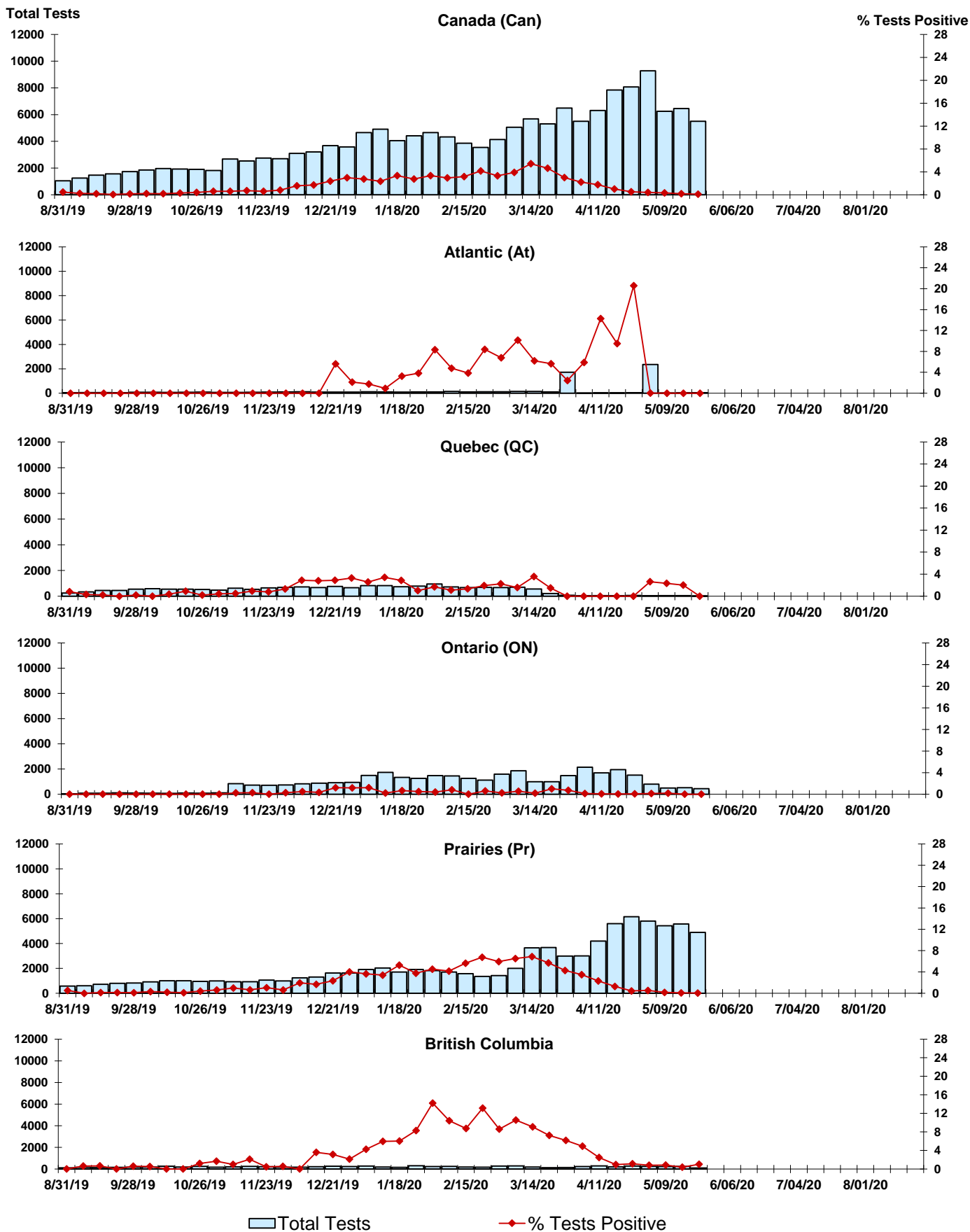


Figure 8: Positive Coronavirus (coron) Tests (%) in Canada by Region by Week of Report



## Abbreviations:

A(H1N1)pdm09: Influenza A(H1N1)pdm09

A(H3): Influenza A(H3N2)

A (UnS): Influenza A (Unsubtyped)

Adeno: Adenovirus

CHEO: Children's Hospital of Eastern Ontario

Coron: Coronavirus

Entero: Enterovirus

hMPV: human metapneumovirus

HSC: Health Sciences Centre

N.A.: Not Applicable

P.H.L.: Public Health Laboratory

P.H.O.L.: Public Health Ontario Laboratory

PIV: Parainfluenza

Rhino: Rhinovirus

RSV: Respiratory syncytial virus

UHN: University Health Network

## Notes:

Specimens from Yukon (YT), Northwest Territories (NT) and Nunavut (NU) are sent to reference laboratories in other provinces. Results reported for the Territories reflect the number of specimens that are identified as originating from YT, NT or NU.

Delays in the reporting of data may cause data to change retrospectively.

Due to reporting delays, the sum of weekly report totals do not add up to cumulative totals.

