

Respiratory Virus Detections in Canada

Respiratory Virus Report, Week 22 - ending May 30, 2020

The Respiratory Virus Detection Surveillance System collects data from select laboratories across Canada on the number of tests performed and the number of tests positive for influenza and other respiratory viruses. Data are reported on a weekly basis year-round to the Centre for Immunization and Respiratory Infectious Diseases (CIRID), Public Health Agency of Canada. These data are also summarized in the weekly FluWatch report.

In this Respiratory Virus Report, the number of detections of coronavirus reflects only seasonal human coronaviruses, not the novel pandemic coronavirus (SARS-CoV2) that causes COVID-19. For information on COVID-19, see the [Coronavirus disease \(COVID-19\): Outbreak](#)

Table 1: Respiratory Virus Detections/Isolations for the week ending May 30, 2020 (Reporting Week 202022)

Reporting Laboratory	Flu Tested	A(H1N1)pdm09 Positive	A(H3) Positive	A(UnS) Positive	Total Flu A Positive	Total Flu B Positive	RSV Tested	RSV Positive	PIV Tested	PIV 1 Positive	PIV 2 Positive	PIV 3 Positive	PIV 4 Positive	Other PIV Positive	Adeno Tested	Adeno Positive	hMPV Tested	hMPV Positive	Entero/Rhino Tested	Entero/Rhino Positive	Coron Tested	Coron Positive
Newfoundland	1028	0	0	0	0	0	1028	2	1028	0	0	0	0	0	1028	1	1028	0	1028	4	N.A.	N.A.
Prince Edward Island	0	0	0	0	0	0	0	0	0	0	0	0	0	0	0	0	0	0	0	0	0	0
Nova Scotia	20	0	0	0	0	0	20	0	20	0	0	0	0	0	20	0	20	0	20	0	20	0
New Brunswick	22	0	0	0	0	0	22	0	9	0	0	0	0	0	9	0	9	0	9	0	9	0
Atlantic	1070	0	0	0	0	0	1070	2	1057	0	0	0	0	0	1057	1	1057	0	1057	4	29	0
Région Nord-Est	24	0	0	0	0	0	18	0	0	0	0	0	0	0	0	0	0	0	N.A.	N.A.	0	0
Québec-Chaudière-Appalaches	11	0	0	0	0	0	13	0	9	0	0	0	0	0	9	0	8	0	N.A.	N.A.	8	0
Centre-du-Québec	7	0	0	0	0	0	10	0	3	0	0	0	0	0	3	0	3	0	N.A.	N.A.	3	0
Montréal-Laval	126	0	0	1	1	0	126	0	73	0	0	0	0	0	73	1	73	0	N.A.	N.A.	73	3
Ouest du Québec	7	0	0	0	0	0	7	0	0	0	0	0	0	0	0	0	0	0	N.A.	N.A.	0	0
Montérégie	0	0	0	0	0	0	0	0	0	0	0	0	0	0	0	0	0	0	N.A.	N.A.	0	0
Province of Québec	175	0	0	1	1	0	174	0	85	0	0	0	0	0	85	1	84	0	N.A.	N.A.	84	3
P.H.O.L. - Ottawa	10	0	0	0	0	0	10	0	10	0	0	0	0	0	10	0	10	0	10	0	10	0
CHEO - Ottawa	152	0	0	4	4	4	152	1	9	0	0	0	0	0	9	0	9	0	9	0	9	1
P.H.O.L. - Kingston	20	0	0	0	0	0	20	0	20	0	0	0	0	0	20	0	20	0	20	1	20	0
UHN / Mount Sinai Hospital	10	0	0	0	0	0	10	0	10	0	0	0	0	0	0	0	10	0	0	0	N.A.	N.A.
P.H.O.L. - Toronto	174	0	0	0	0	0	174	0	174	0	0	0	0	0	174	0	174	0	174	2	174	0
Sick Kids Hospital - Toronto	0	0	0	0	0	0	0	0	0	0	0	0	0	0	0	0	0	0	0	0	0	0
Sunnybrook & Women's College HSC	0	0	0	0	0	0	0	0	0	0	0	0	0	0	0	0	0	0	0	0	0	0
P.H.O.L. - Sault Ste. Marie	20	0	0	0	0	0	18	0	18	0	0	0	0	0	18	0	18	0	18	0	18	0
P.H.O.L. - Timmins	4	0	0	0	0	0	4	0	4	0	0	0	0	0	4	0	4	0	4	0	4	0
St. Joseph's - London	18	0	0	0	0	0	18	0	18	0	0	0	0	0	18	0	18	0	18	0	23	0
P.H.O.L. - London	36	0	0	0	0	0	36	0	36	0	0	0	0	0	36	0	36	0	36	0	36	0
P.H.O.L. - Orillia	12	0	0	0	0	0	12	0	12	0	0	0	0	0	12	0	12	0	12	0	12	0
P.H.O.L. - Thunder Bay	41	0	0	0	0	0	41	0	41	0	0	0	0	0	41	2	41	0	41	9	41	0
P.H.O.L. - Sudbury	10	0	0	0	0	0	10	0	10	0	0	0	0	0	10	0	10	0	10	0	10	0
P.H.O.L. - Hamilton	25	0	0	0	0	0	25	0	25	0	0	0	0	0	25	0	25	0	25	0	25	0
P.H.O.L. - Peterborough	11	0	0	0	0	0	11	0	11	0	0	0	0	0	11	0	11	0	11	0	11	0
St. Joseph's - Hamilton	652	0	0	0	0	0	652	0	652	0	0	0	0	0	652	1	652	0	652	1	0	0
Province of Ontario	1195	0	0	4	4	4	1193	1	1050	0	0	0	0	0	1040	3	1050	0	1040	13	393	1
Province of Manitoba	816	0	0	0	0	0	816	1	100	0	0	0	0	0	100	1	85	0	100	0	85	2
Regina	140	0	0	0	0	0	140	0	128	0	1	0	0	0	128	1	128	0	128	4	128	1
Saskatoon	0	0	0	0	0	0	0	0	0	0	0	0	0	0	0	0	0	0	0	0	0	0
Province of Saskatchewan	140	0	0	0	0	0	140	0	128	0	1	0	0	0	128	1	128	0	128	4	128	1
Province of Alberta	4165	0	0	0	0	0	4165	0	4165	0	1	1	1	0	4165	26	4165	2	4165	80	4165	3
Prairies	5121	0	0	0	0	0	5121	1	4393	0	1	1	1	0	4393	28	4378	2	4393	84	4378	6
British Columbia	2110	0	0	0	0	0	2110	0	1468	0	0	0	0	0	1468	2	1468	0	1461	18	76	0
Yukon	135	0	0	0	0	0	135	0	N.A.	N.A.	N.A.	N.A.	N.A.	N.A.	N.A.	N.A.	N.A.	N.A.	N.A.	N.A.	N.A.	N.A.
Northwest Territories	19	0	0	0	0	0	19	0	19	0	0	0	0	0	19	0	19	0	19	1	19	0
Nunavut	59	0	0	0	0	0	59	1	59	5	0	0	0	0	59	2	59	0	59	19	4	1
Territories	213	0	0	0	0	0	213	1	78	5	0	0	0	0	78	2	78	0	78	20	23	1
CANADA	9884	0	0	5	5	4	9881	5	8131	5	1	1	1	0	8121	37	8115	2	8029	139	4983	11

Specimens from Yukon (YT), Northwest Territories (NT) and Nunavut (NU) are sent to reference laboratories in other provinces and reported results reflect specimens identified as originating from YT, NT or NU.

Results from British Columbia comprise of specimens from the following sites: BC Children's and Women's Hospital, Children's and Women's Hospital Laboratory, Fraser Health Medical Microbiology Laboratory, Island Health, Providence Health Care, Powell River Hospital, St. Paul's Hospital, Vancouver General Hospital, Victoria General Hospital, Victoria Coastal Health, BCCDC Public Health Laboratory, Interior Health Authority sites and Northern Health Authority sites.

Delays in the reporting of data may cause data to change retrospectively.

For BC, only data from subtyped influenza A specimens are included in the weekly number of influenza detections and so the sum of A(H1N1)pdm09, A(H3), and A(UnS) positive results may not equal the sum of total Flu A positive results.

Table 2: Respiratory Virus Detections/Isolations for the period August 31, 2019 - May 30, 2020 (Reporting Weeks 201935-202022)

Reporting Laboratory	Flu Tested	A(H1N1)pdm09 Positive	A(H3) Positive	A(UnS) Positive	Total Flu A Positive	Total Flu B Positive	RSV Tested	RSV Positive	PIV Tested	PIV 1 Positive	PIV 2 Positive	PIV 3 Positive	PIV 4 Positive	Other PIV Positive	Adeno Tested	Adeno Positive	hMPV Tested	hMPV Positive	Entero/Rhino Tested	Entero/Rhino Positive	Coron Tested	Coron Positive
Newfoundland	12277	8	33	166	207	513	12277	332	12277	147	2	11	0	0	12277	114	12277	189	12277	358	N.A.	N.A.
Prince Edward Island	1267	0	0	144	144	78	1267	146	48	1	0	0	1	0	48	0	46	0	48	16	48	2
Nova Scotia	6608	3	2	196	201	248	6710	625	579	13	1	3	5	0	613	12	613	11	613	77	626	14
New Brunswick	11715	61	29	957	1047	1292	11656	1077	2370	53	7	0	13	0	2370	62	2370	16	2370	286	6370	125
Atlantic	31867	72	64	1463	1599	2131	31910	2180	15274	214	10	14	19	0	15308	188	15306	216	15308	737	7044	141
Région Nord-Est	9236	0	0	1136	1136	1323	7913	644	0	0	0	0	0	0	0	0	0	0	N.A.	N.A.	0	0
Québec-Chaudière-Appalaches	14002	0	0	1900	1900	1829	13892	1318	2709	31	4	3	14	0	2757	80	2153	24	N.A.	N.A.	2096	35
Centre-du-Québec	18988	0	0	2909	2909	2395	15295	1385	45	0	0	1	0	0	45	0	45	0	N.A.	N.A.	45	1
Montréal-Laval	38067	0	0	4022	4022	2411	36913	2398	16843	144	4	35	13	0	16843	515	16380	270	N.A.	N.A.	16690	264
Ouest du Québec	12572	0	0	1745	1745	1278	11724	1089	0	0	0	0	0	0	0	0	0	0	N.A.	N.A.	0	0
Montérégie	8520	0	0	1133	1133	791	8292	610	0	0	0	0	0	0	0	0	0	0	N.A.	N.A.	0	0
Province of Québec	101385	0	0	12845	12845	10027	94029	7444	19597	175	8	39	27	0	19645	595	18578	294	N.A.	N.A.	18831	300
P.H.O.L. - Ottawa	1821	108	61	3	172	71	1812	86	1787	2	0	0	0	0	1787	18	1773	61	1631	78	1616	0
CHEO - Ottawa	9573	1	0	663	664	462	9573	687	960	17	0	5	10	5	960	20	960	20	963	167	951	29
P.H.O.L. - Kingston	1435	62	27	4	93	23	1413	68	1409	1	0	0	0	0	1409	17	1400	60	1240	64	1227	0
UHN / Mount Sinai Hospital	12006	9	0	651	660	218	12006	348	618	7	2	10	2	0	0	0	695	16	0	0	N.A.	N.A.
P.H.O.L. - Toronto	17652	1349	144	36	1529	355	17188	416	17109	34	0	3	0	0	17109	154	16889	440	14565	799	14325	0
Sick Kids Hospital - Toronto	2407	104	13	99	216	168	1936	208	1936	26	5	8	27	0	1936	53	1936	48	1936	366	1936	92
Sunnybrook & Women's College HSC	3456	0	0	124	124	25	3456	64	3456	9	0	17	0	0	3197	11	3316	35	3316	66	120	0
P.H.O.L. - Sault Ste. Marie	574	20	0	0	20	8	555	28	556	1	0	0	0	0	556	5	553	33	505	14	502	0
P.H.O.L. - Timmins	687	65	3	2	70	12	655	32	658	0	0	0	0	0	658	1	655	30	630	5	625	0
St. Joseph's - London	4627	0	0	238	238	114	4627	334	1593	19	4	3	14	0	1593	24	1593	33	816	111	768	22
P.H.O.L. - London	5280	309	112	9	430	145	5245	250	5231	8	0	0	0	0	5233	49	5192	180	4775	296	4724	0
P.H.O.L. - Orillia	1646	81	31	3	115	33	1643	89	1640	4	0	0	0	0	1640	8	1635	50	1449	81	1442	0
P.H.O.L. - Thunder Bay	1271	82	17	9	108	45	1269	64	1269	0	0	1	0	0	1269	17	1258	52	1221	64	1209	0
P.H.O.L. - Sudbury	900	29	14	4	47	15	894	45	895	0	0	1	0	0	895	9	885	14	823	28	812	0
P.H.O.L. - Hamilton	5037	286	39	12	337	117	4889	164	4870	10	1	0	0	0	4870	68	4849	139	4275	339	4250	0
P.H.O.L. - Peterborough	1210	66	4	1	71	10	1201	33	1200	3	0	0	0	0	1199	10	1195	47	945	75	938	0
St. Joseph's - Hamilton	29707	0	0	1617	1617	806	29707	1275	29707	119	6	26	0	0	29707	272	29707	461	29707	1281	0	0
Province of Ontario	99289	2571	465	3475	6511	2627	98069	4191	74894	260	18	74	53	5	74018	736	74491	1719	68797	3834	35445	143
Manitoba	21298	174	134	1340	1648	889	20905	1007	3976	48	9	4	8	0	3976	59	2876	59	3976	491	2560	79
Regina	13298	43	26	1193	1262	665	13307	1043	5532	148	15	6	30	0	5532	91	5455	205	5532	810	5532	150
Saskatoon	4455	0	0	318	318	235	4455	182	4519	98	12	6	7	0	4519	66	4522	27	4519	530	4519	45
Province of Saskatchewan	17753	43	26	1511	1580	900	17762	1225	10051	246	27	12	37	0	10051	157	9977	232	10051	1340	10051	195
Province of Alberta	85846	1738	1287	1346	4371	3416	78396	0	78396	494	98	99	266	0	78396	860	78396	1627	78396	5718	78396	1724
Prairies	124897	1955	1447	4197	7599	5205	117063	2232	92423	788	134	115	311	0	92423	1076	91249	1918	92423	7549	91007	1998
British Columbia	83275	277	244	1849	4088	2574	82914	2770	24107	184	58	38	52	86	24104	164	24028	687	23328	1765	8208	313
Yukon	7496	4	8	55	73	45	7496	23	N.A.	N.A.	N.A.	N.A.	N.A.	N.A.	N.A.	N.A.	N.A.	N.A.	N.A.	N.A.	N.A.	N.A.
Northwest Territories	1514	90	19	1	110	191	1503	0	1503	14	2	13	13	0	1503	21	1503	87	1503	184	1503	75
Nunavut	1054	5	14	42	61	73	1051	49	1051	32	3	1	6	0	1051	22	1051	23	1051	147	228	32
Territories	10064	99	41	98	244	309	10050	72	2554	46	5	14	19	0	2554	43	2554	110	2554	331	1731	107
CANADA	450777	4974	2261	23927	32886	22873	434035	18889	228849	1667	233	294	481	91	228052	2802	226206	4944	202410	14216	162266	3002

Specimens from YT, NT and NU are sent to reference laboratories in other provinces and reported results reflect specimens identified as originating from YT, NT or NU.

Results from British Columbia comprise of specimens from the following sites: BC Children's and Women's Hospital, Children's and Women's Hospital Laboratory, Fraser Health Medical Microbiology Laboratory, Island Health, Providence Health Care, Powell River Hospital, St. Paul's Hospital, Vancouver General Hospital, Victoria General Hospital, Victoria Coastal Health, BCCDC P

Delays in the reporting of data may cause data to change retrospectively. Due to reporting delays, the sum of weekly report totals do not add up to cumulative totals.

For BC, only data from subtyped influenza A specimens are included in the weekly number of influenza detections and so the sum of A(H1N1)pdm09, A(H3), and A(UnS) positive results may not equal the sum of total Flu A positive results.

Figure 1: Number positive laboratory tests for other respiratory viruses by report week, Canada, 2019-20

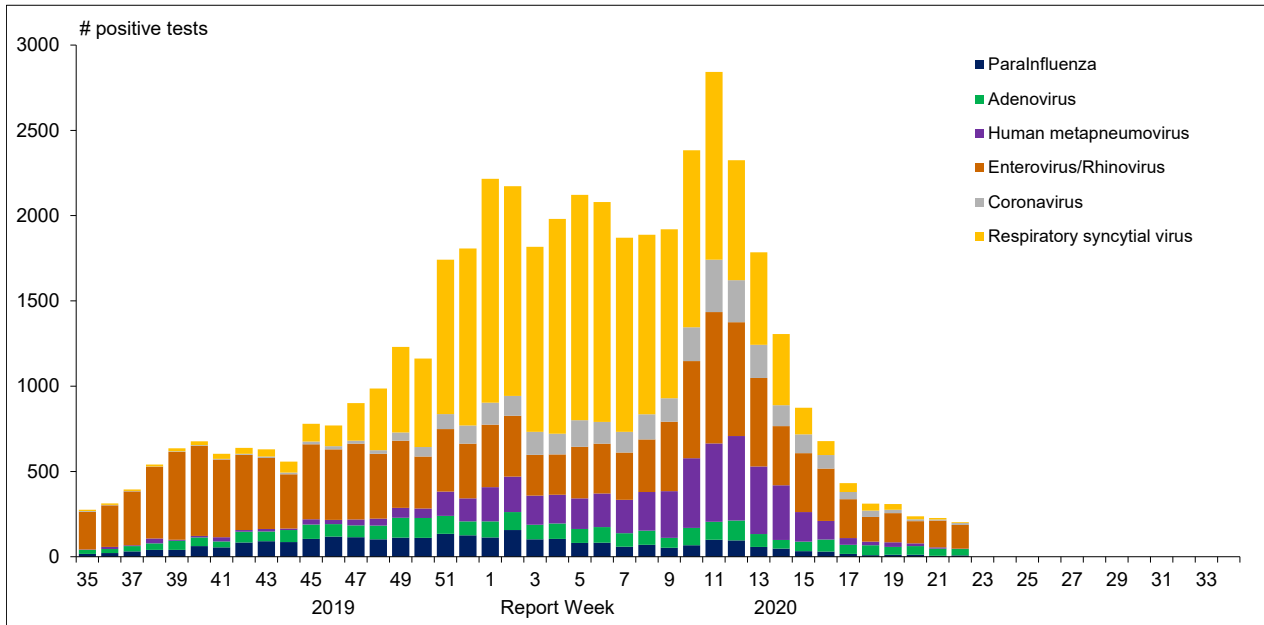


Figure 2 : Positive Influenza Tests (%) in Canada by Region by Week of Report

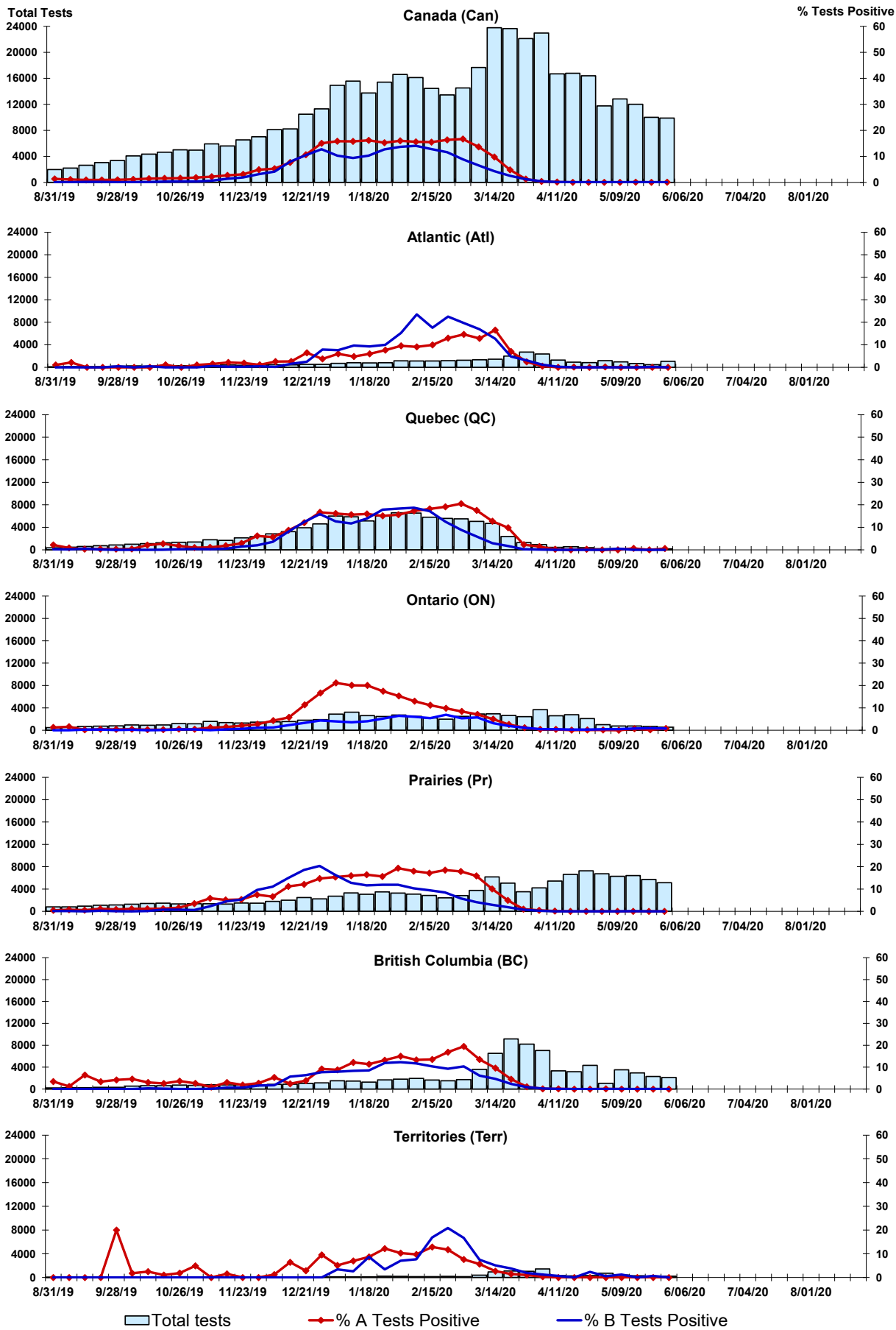


Figure 3: Positive Respiratory syncytial virus (RSV) Tests (%) in Canada by Region by Week of Report

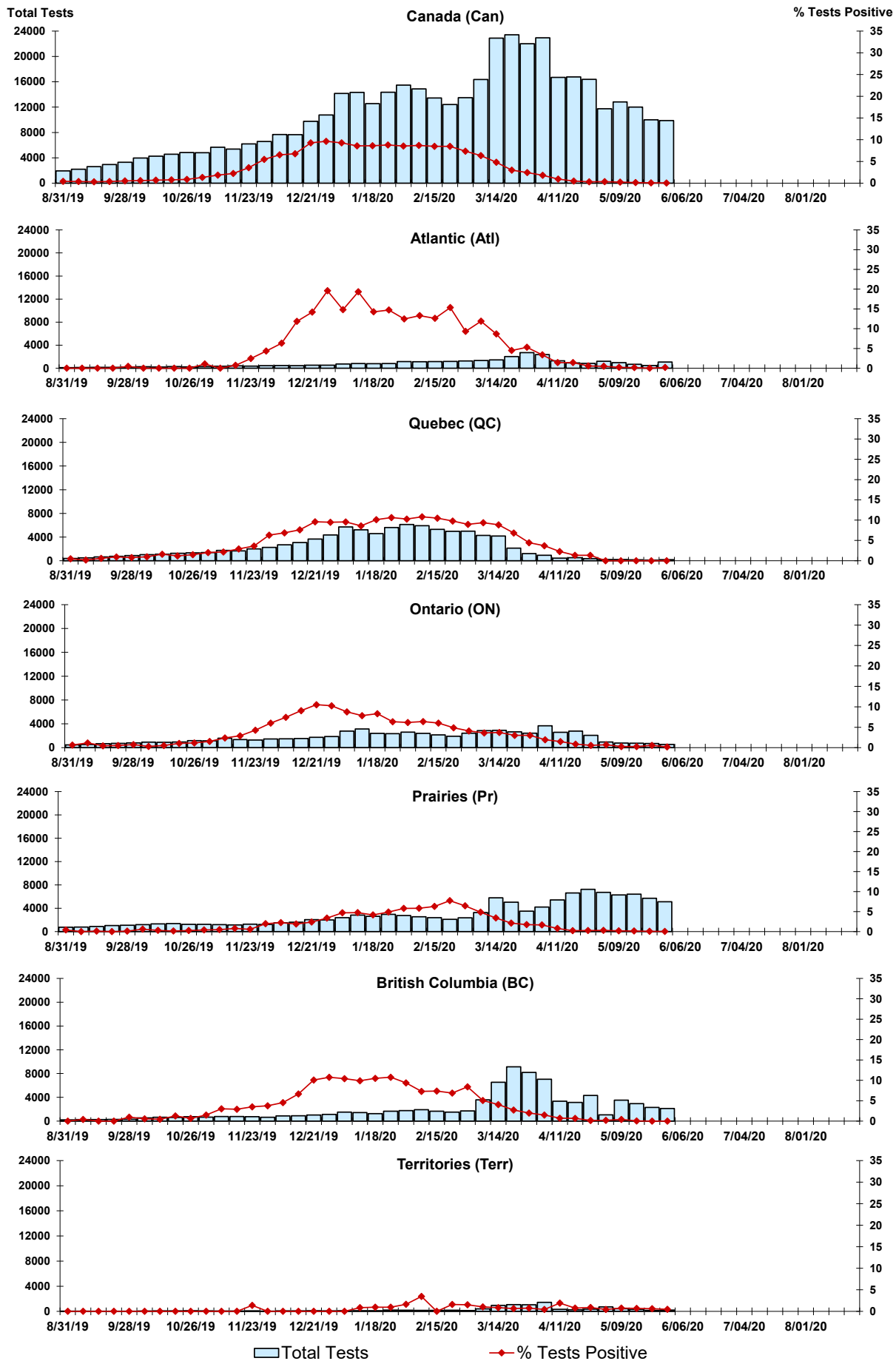


Figure 4: Positive Parainfluenza (PIV) Tests (%) in Canada by Region by Week of Report

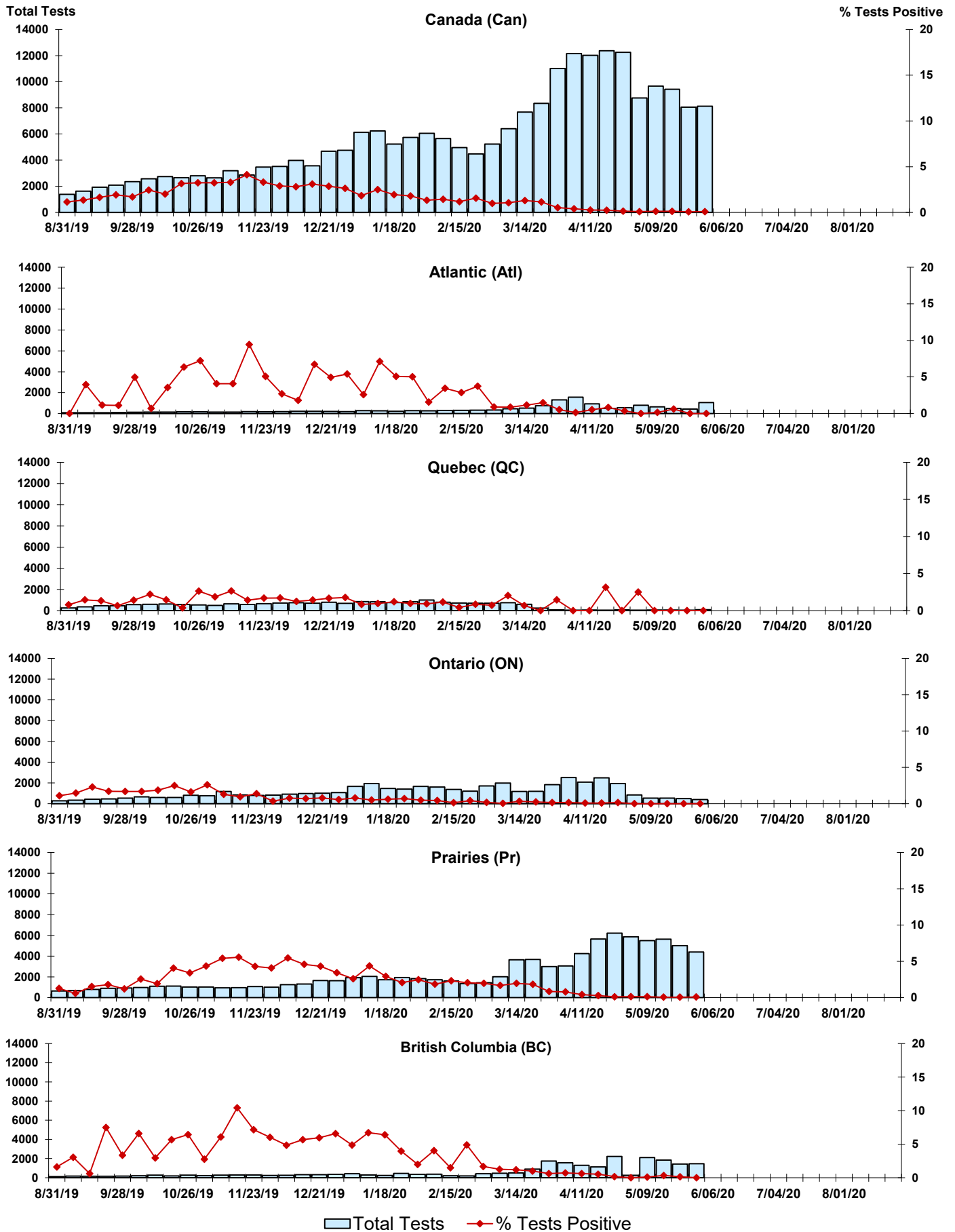


Figure 5: Positive Adenovirus (adeno) Tests (%) in Canada by Region by Week of Report

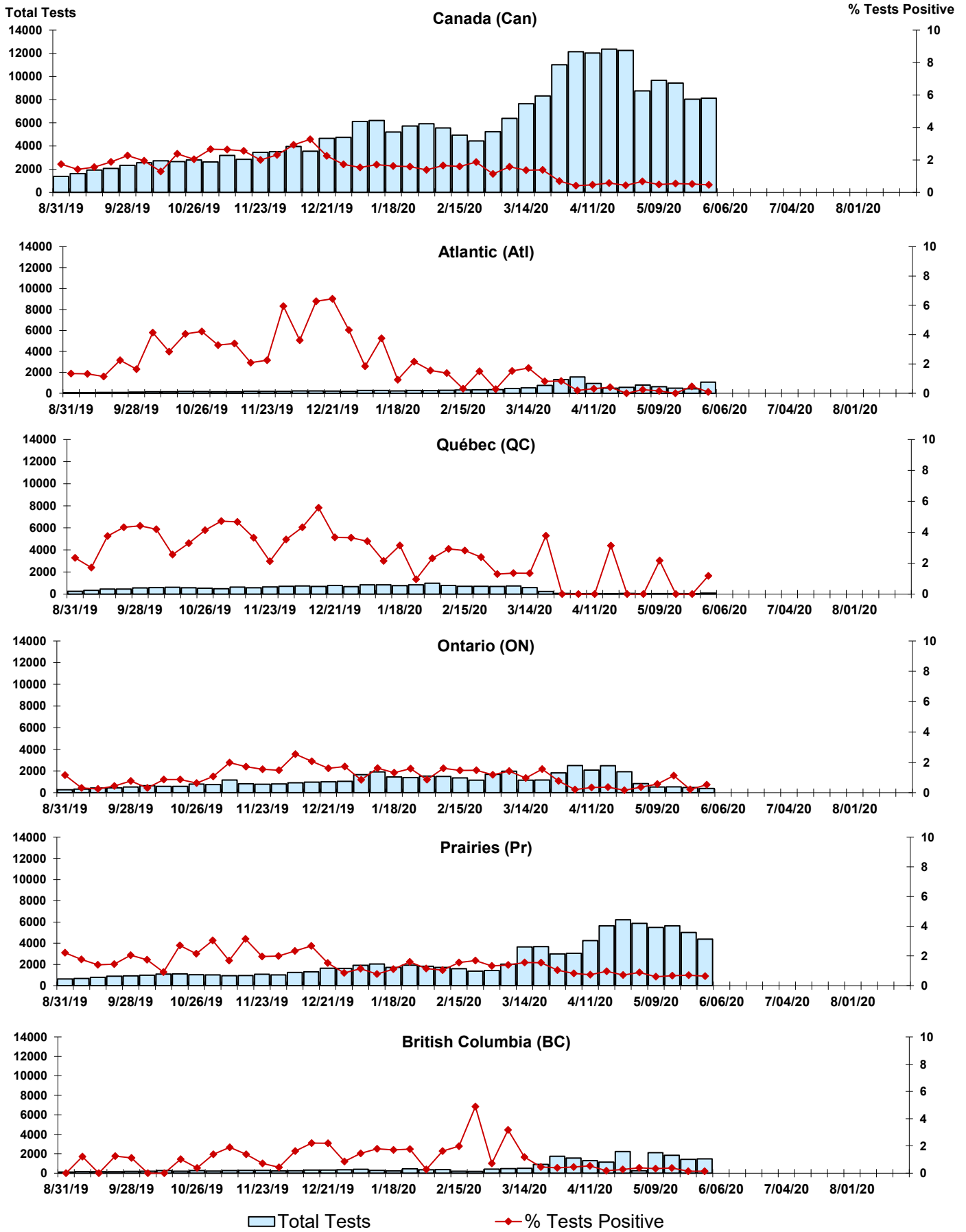


Figure 6: Positive human metapneumovirus (hMPV) Tests (%) in Canada by Region by Week of Report

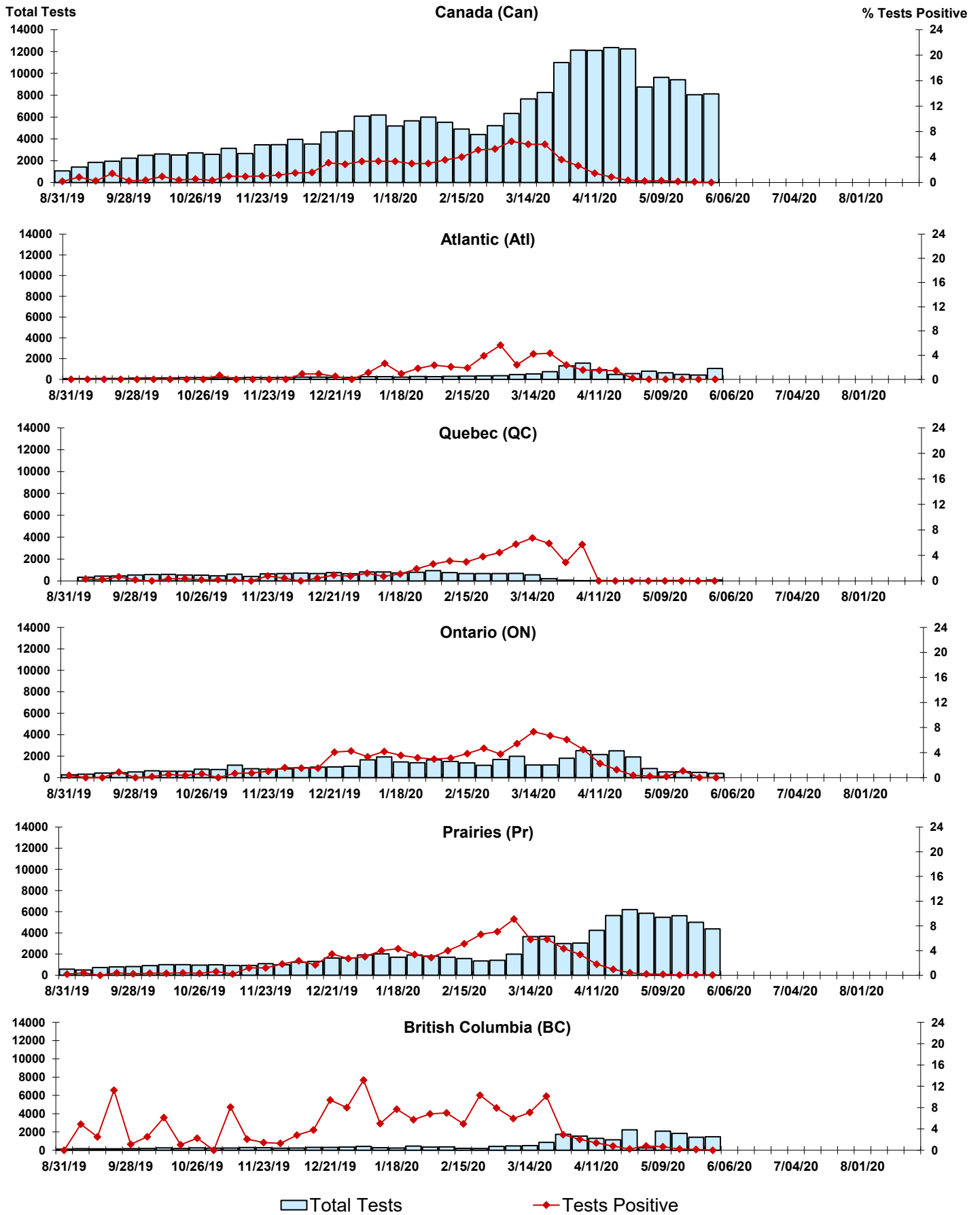


Figure 7: Positive Enterovirus/Rhinovirus (entero/rhino) Tests (%) in Canada by Region by Week of Report

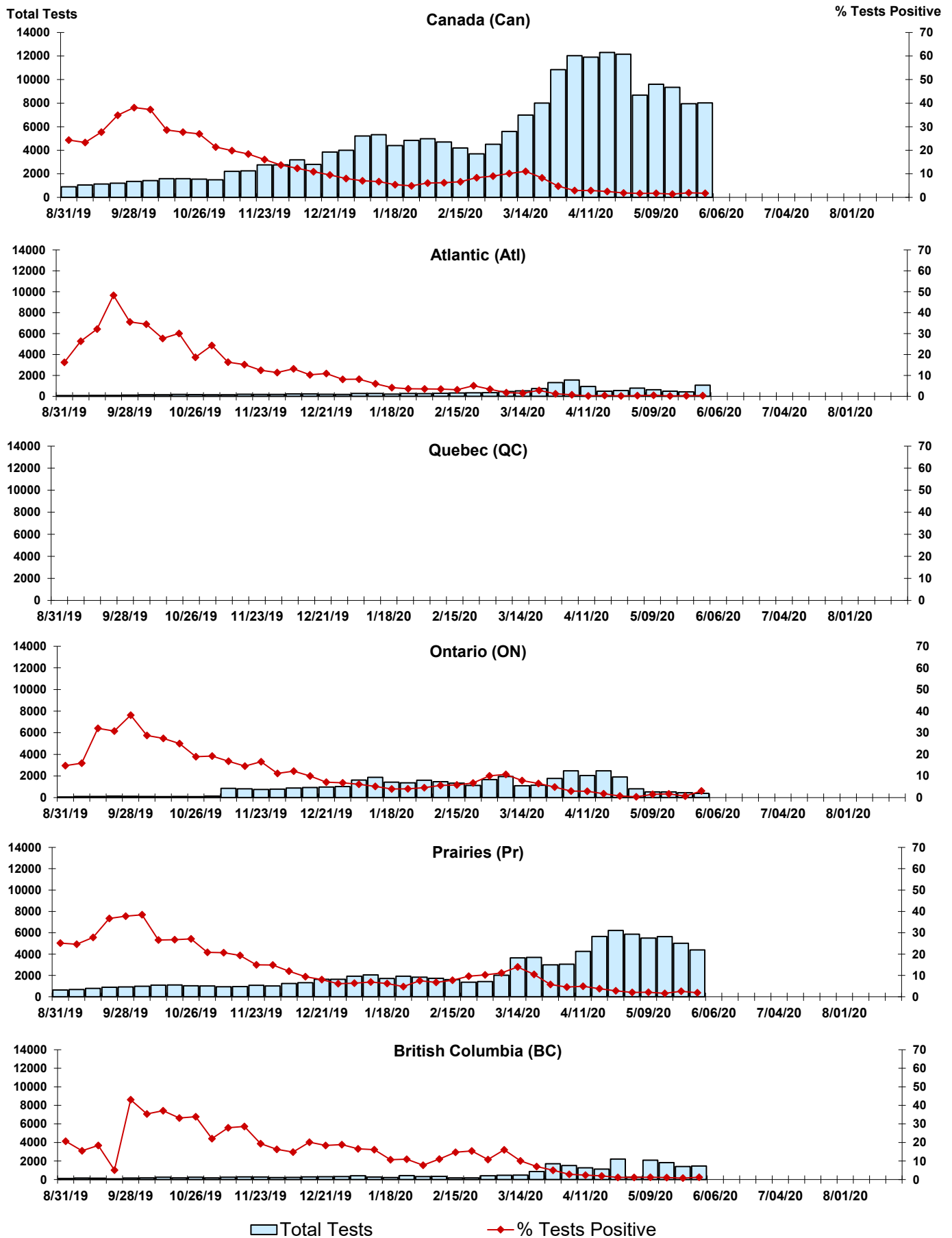
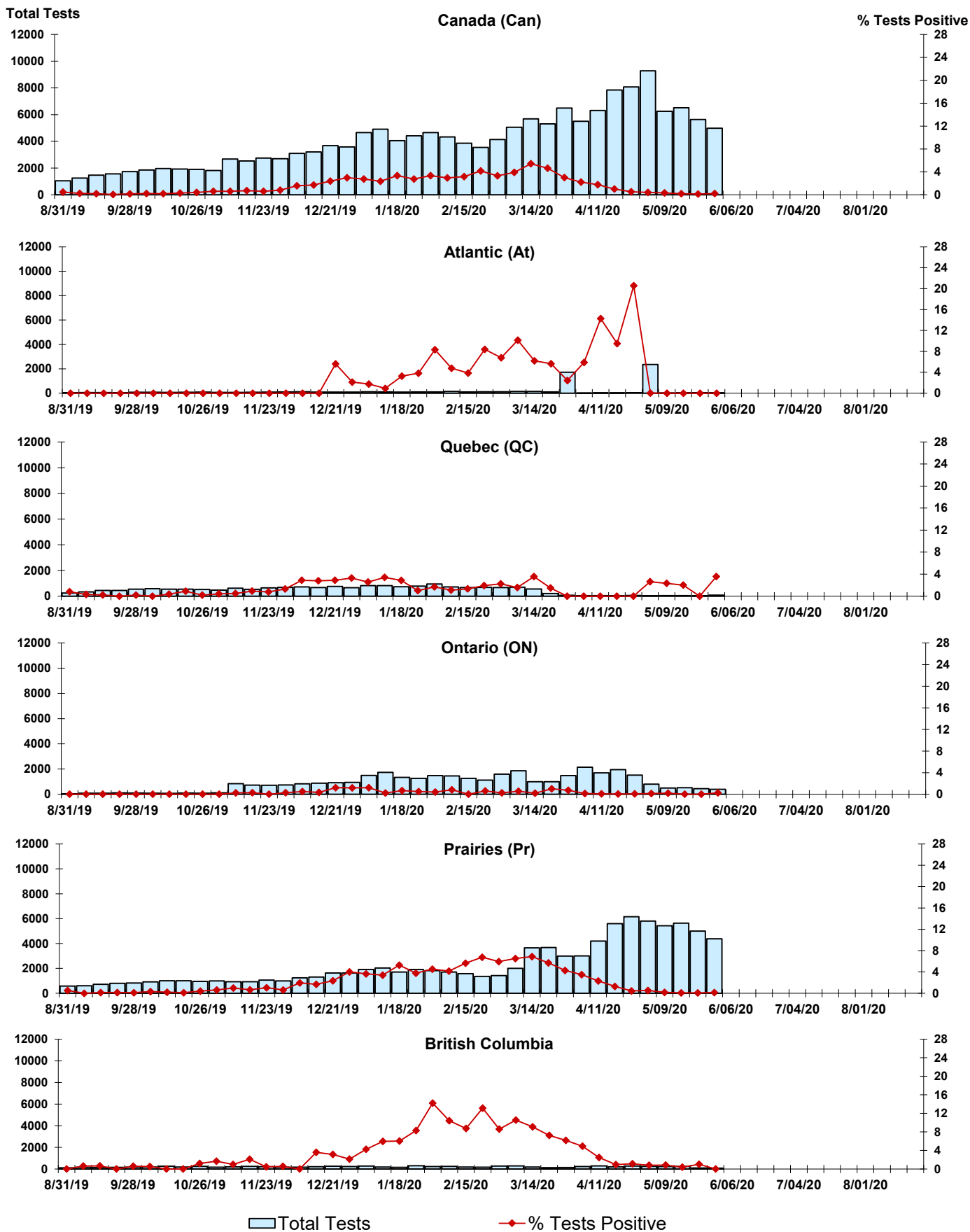


Figure 8: Positive Coronavirus (coron) Tests (%) in Canada by Region by Week of Report



Abbreviations:

A(H1N1)pdm09: Influenza A(H1N1)pdm09

A(H3): Influenza A(H3N2)

A (UnS): Influenza A (Unsubtyped)

Adeno: Adenovirus

CHEO: Children's Hospital of Eastern Ontario

Coron: Coronavirus

Entero: Enterovirus

hMPV: human metapneumovirus

HSC: Health Sciences Centre

N.A.: Not Applicable

P.H.L.: Public Health Laboratory

P.H.O.L.: Public Health Ontario Laboratory

PIV: Parainfluenza

Rhino: Rhinovirus

RSV: Respiratory syncytial virus

UHN: University Health Network

Notes:

Specimens from Yukon (YT), Northwest Territories (NT) and Nunavut (NU) are sent to reference laboratories in other provinces. Results reported for the Territories reflect the number of specimens that are identified as originating from YT, NT or NU.

Delays in the reporting of data may cause data to change retrospectively.

Due to reporting delays, the sum of weekly report totals do not add up to cumulative totals.

