

# Respiratory Virus Report, Week 26 - ending June 27, 2020

The Respiratory Virus Detection Surveillance System collects data from select laboratories across Canada on the number of tests performed and the number of tests positive for influenza and other respiratory viruses. Data are reported on a weekly basis year-round to the Centre for Immunization and Respiratory Infectious Diseases (CIRID), Public Health Agency of Canada. These data are also summarized in the weekly FluWatch report.

In this Respiratory Virus Report, the number of detections of coronavirus reflects only seasonal human coronaviruses, not the novel pandemic coronavirus (SARS-CoV2) that causes COVID-19. For information on COVID-19, see the [Coronavirus disease \(COVID-19\): Outbreak](#)

**Table 1: Respiratory Virus Detections/Isolations for the week ending June 27, 2020 (Reporting Week 202026)**

Reporting Laboratory	Flu Tested	A(H1N1)pdm09 Positive	A(H3) Positive	A(UnS) Positive	Total Flu A Positive	Total Flu B Positive	RSV Tested	RSV Positive	PIV Tested	PIV 1 Positive	PIV 2 Positive	PIV 3 Positive	PIV 4 Positive	Other PIV Positive	Adeno Tested	Adeno Positive	hMPV Tested	hMPV Positive	Entero/Rhino Tested	Entero/Rhino Positive	Coron Tested	Coron Positive
Newfoundland	958	0	0	0	0	0	958	0	958	0	0	0	0	0	958	2	958	0	958	6	N.A.	N.A.
Prince Edward Island	0	0	0	0	0	0	0	0	0	0	0	0	0	0	0	0	0	0	0	0	0	0
Nova Scotia	14	0	0	0	0	0	14	0	13	0	0	0	0	0	13	0	13	0	13	0	13	0
New Brunswick	30	0	0	0	0	0	30	0	15	0	0	0	0	0	15	1	15	0	15	0	0	0
<b>Atlantic</b>	<b>1002</b>	<b>0</b>	<b>0</b>	<b>0</b>	<b>0</b>	<b>0</b>	<b>1002</b>	<b>0</b>	<b>986</b>	<b>0</b>	<b>0</b>	<b>0</b>	<b>0</b>	<b>0</b>	<b>986</b>	<b>3</b>	<b>986</b>	<b>0</b>	<b>986</b>	<b>6</b>	<b>13</b>	<b>0</b>
Région Nord-Est	5	0	0	0	0	0	1	0	0	0	0	0	0	0	0	0	0	0	N.A.	N.A.	0	0
Québec-Chaudière-Appalaches	2	0	0	0	0	0	17	0	15	0	0	0	0	0	15	0	15	1	N.A.	N.A.	15	0
Centre-du-Québec	7	0	0	0	0	0	6	0	4	0	0	0	0	0	4	0	4	0	N.A.	N.A.	4	0
Montréal-Laval	68	0	0	0	0	0	69	0	63	0	0	0	0	0	63	2	63	0	N.A.	N.A.	63	0
Ouest du Québec	3	0	0	0	0	0	3	0	0	0	0	0	0	0	0	0	0	0	N.A.	N.A.	0	0
Montérégie	0	0	0	0	0	0	0	0	0	0	0	0	0	0	0	0	0	0	N.A.	N.A.	0	0
<b>Province of Québec</b>	<b>85</b>	<b>0</b>	<b>0</b>	<b>0</b>	<b>0</b>	<b>0</b>	<b>96</b>	<b>0</b>	<b>82</b>	<b>0</b>	<b>0</b>	<b>0</b>	<b>0</b>	<b>0</b>	<b>82</b>	<b>2</b>	<b>82</b>	<b>1</b>	<b>N.A.</b>	<b>N.A.</b>	<b>82</b>	<b>0</b>
P.H.O.L. - Ottawa	12	0	0	0	0	0	12	0	12	0	0	0	0	0	12	0	12	0	12	0	12	0
CHEO - Ottawa	108	0	0	0	0	0	108	1	22	0	0	0	0	0	22	0	22	0	22	1	18	2
P.H.O.L. - Kingston	22	0	0	0	0	0	22	0	22	0	0	0	0	0	22	0	22	0	22	0	22	0
UHN / Mount Sinai Hospital	10	0	0	0	0	0	10	0	9	0	0	0	0	0	0	0	9	0	0	0	N.A.	N.A.
P.H.O.L. - Toronto	136	0	0	0	0	0	136	0	136	0	0	0	0	0	136	0	136	0	136	6	136	0
Sick Kids Hospital - Toronto	0	0	0	0	0	0	0	0	0	0	0	0	0	0	0	0	0	0	0	0	0	0
Sunnybrook & Women's College HSC	0	0	0	0	0	0	0	0	0	0	0	0	0	0	0	0	0	0	0	0	0	0
P.H.O.L. - Sault Ste. Marie	2	0	0	0	0	0	2	0	2	0	0	0	0	0	2	0	2	0	2	0	2	0
P.H.O.L. - Timmins	0	0	0	0	0	0	0	0	0	0	0	0	0	0	0	0	0	0	0	0	0	0
St. Joseph's - London	12	0	0	0	0	0	12	0	12	0	0	0	0	0	12	0	12	0	12	0	10	0
P.H.O.L. - London	27	0	0	0	0	0	27	0	27	0	0	0	0	0	27	0	26	0	27	0	26	0
P.H.O.L. - Orillia	6	0	0	0	0	0	6	0	6	0	0	0	0	0	6	0	6	0	6	0	6	0
P.H.O.L. - Thunder Bay	27	0	0	0	0	0	27	0	27	0	0	0	0	0	27	0	27	0	27	10	27	0
P.H.O.L. - Sudbury	6	0	0	0	0	0	6	0	6	0	0	0	0	0	6	0	6	0	6	0	6	0
P.H.O.L. - Hamilton	28	0	0	0	0	0	28	0	28	0	0	0	0	0	28	0	28	0	28	0	28	0
P.H.O.L. - Peterborough	14	0	0	0	0	0	14	0	14	0	0	0	0	0	14	0	14	0	14	0	14	0
St. Joseph's - Hamilton	425	0	0	0	0	0	425	0	425	0	0	0	0	0	425	0	425	0	425	2	0	0
<b>Province of Ontario</b>	<b>835</b>	<b>0</b>	<b>0</b>	<b>0</b>	<b>0</b>	<b>0</b>	<b>835</b>	<b>1</b>	<b>748</b>	<b>0</b>	<b>0</b>	<b>0</b>	<b>0</b>	<b>0</b>	<b>739</b>	<b>0</b>	<b>747</b>	<b>0</b>	<b>739</b>	<b>19</b>	<b>307</b>	<b>2</b>
Province of Manitoba	314	0	0	0	0	0	314	1	37	0	0	0	0	0	37	0	33	0	37	0	33	0
Regina	131	0	0	0	0	0	131	0	167	0	0	0	1	0	167	2	167	0	167	25	167	1
Saskatoon	0	0	0	0	0	0	0	0	0	0	0	0	0	0	0	0	0	0	0	0	0	0
Province of Saskatchewan	131	0	0	0	0	0	131	0	167	0	0	0	1	0	167	2	167	0	167	25	167	1
Province of Alberta	2609	0	0	0	0	0	2609	0	2609	1	1	0	0	0	2609	6	2609	0	2609	55	2609	3
<b>Prairies</b>	<b>3054</b>	<b>0</b>	<b>0</b>	<b>0</b>	<b>0</b>	<b>0</b>	<b>3054</b>	<b>1</b>	<b>2813</b>	<b>1</b>	<b>1</b>	<b>0</b>	<b>1</b>	<b>0</b>	<b>2813</b>	<b>8</b>	<b>2809</b>	<b>0</b>	<b>2813</b>	<b>80</b>	<b>2809</b>	<b>4</b>
<b>British Columbia</b>	<b>731</b>	<b>0</b>	<b>0</b>	<b>0</b>	<b>0</b>	<b>0</b>	<b>731</b>	<b>0</b>	<b>161</b>	<b>0</b>	<b>0</b>	<b>0</b>	<b>0</b>	<b>0</b>	<b>161</b>	<b>0</b>	<b>51</b>	<b>0</b>	<b>155</b>	<b>4</b>	<b>155</b>	<b>0</b>
Yukon	125	0	0	0	0	0	125	0	N.A.	N.A.	N.A.	N.A.	N.A.	N.A.	N.A.	N.A.	N.A.	N.A.	N.A.	N.A.	N.A.	N.A.
Northwest Territories	4	0	0	0	0	0	4	0	4	0	0	0	0	0	4	0	4	0	4	0	4	0
Nunavut	57	0	0	0	0	0	57	1	57	0	0	0	0	0	57	1	57	1	57	10	4	1
<b>Territories</b>	<b>186</b>	<b>0</b>	<b>0</b>	<b>0</b>	<b>0</b>	<b>0</b>	<b>186</b>	<b>1</b>	<b>61</b>	<b>0</b>	<b>0</b>	<b>0</b>	<b>0</b>	<b>0</b>	<b>61</b>	<b>1</b>	<b>61</b>	<b>1</b>	<b>61</b>	<b>10</b>	<b>8</b>	<b>1</b>
<b>CANADA</b>	<b>5893</b>	<b>0</b>	<b>0</b>	<b>0</b>	<b>0</b>	<b>0</b>	<b>5904</b>	<b>3</b>	<b>4851</b>	<b>1</b>	<b>1</b>	<b>0</b>	<b>1</b>	<b>0</b>	<b>4842</b>	<b>14</b>	<b>4736</b>	<b>2</b>	<b>4754</b>	<b>119</b>	<b>3374</b>	<b>7</b>

Specimens from Yukon (YT), Northwest Territories (NT) and Nunavut (NU) are sent to reference laboratories in other provinces and reported results reflect specimens identified as originating from YT, NT or NU.

Results from British Columbia comprise of specimens from the following sites: BC Children's and Women's Hospital, Children's and Women's Hospital Laboratory, Fraser Health Medical Microbiology Laboratory, Island Health, Providence Health Care, Powell River Hospital, St. Paul's Hospital, Vancouver General Hospital, Victoria General Hospital, Victoria Coastal Health, BCCDC Public Health Laboratory, Interior Health Authority sites and Northern Health Authority sites.

Delays in the reporting of data may cause data to change retrospectively.

For BC, only data from subtyped influenza A specimens are included in the weekly number of influenza detections and so the sum of A(H1N1)pdm09, A(H3), and A(UnS) positive results may not equal the sum of total Flu A positive results.

**Table 2: Respiratory Virus Detections/Isolations for the period August 31, 2019 - June 27, 2020 (Reporting Weeks 201935-202026)**

Reporting Laboratory	Flu Tested	A(H1N1)pdm09 Positive	A(H3) Positive	A(UnS) Positive	Total Flu A Positive	Total Flu B Positive	RSV Tested	RSV Positive	PIV Tested	PIV 1 Positive	PIV 2 Positive	PIV 3 Positive	PIV 4 Positive	Other PIV Positive	Adeno Tested	Adeno Positive	hMPV Tested	hMPV Positive	Entero/Rhino Tested	Entero/Rhino Positive	Coron Tested	Coron Positive
Newfoundland	16479	8	33	167	208	513	16479	336	16479	147	2	13	0	0	16479	121	16479	189	16479	382	N.A.	N.A.
Prince Edward Island	1268	0	0	144	144	78	1268	146	48	1	0	0	1	0	48	0	46	0	48	16	48	2
Nova Scotia	6659	3	2	196	201	248	6761	625	629	13	1	3	5	0	663	12	663	11	663	77	676	14
New Brunswick	11843	61	29	957	1047	1292	11784	1077	2433	53	7	0	13	0	2433	63	2433	16	2433	290	6399	125
<b>Atlantic</b>	<b>36249</b>	<b>72</b>	<b>64</b>	<b>1464</b>	<b>1600</b>	<b>2131</b>	<b>36292</b>	<b>2184</b>	<b>19589</b>	<b>214</b>	<b>10</b>	<b>16</b>	<b>19</b>	<b>0</b>	<b>19623</b>	<b>196</b>	<b>19621</b>	<b>216</b>	<b>19623</b>	<b>765</b>	<b>7123</b>	<b>141</b>
Région Nord-Est	9265	0	0	1136	1136	1323	7935	644	0	0	0	0	0	0	0	0	0	0	N.A.	N.A.	0	0
Québec-Chaudière-Appalaches	14029	0	0	1900	1900	1829	13941	1318	2752	31	4	3	14	0	2799	80	2196	25	N.A.	N.A.	2138	35
Centre-du-Québec	19006	0	0	2909	2909	2395	15309	1385	57	0	0	1	0	0	57	0	57	0	N.A.	N.A.	57	1
Montréal-Laval	38291	0	0	4022	4022	2411	37137	2398	17035	144	4	35	13	0	17035	522	16571	270	N.A.	N.A.	16881	264
Ouest du Québec	12598	0	0	1745	1745	1278	11750	1089	0	0	0	0	0	0	0	0	0	0	N.A.	N.A.	0	0
Montérégie	8520	0	0	1133	1133	791	8292	610	0	0	0	0	0	0	0	0	0	0	N.A.	N.A.	0	0
<b>Province of Québec</b>	<b>101709</b>	<b>0</b>	<b>0</b>	<b>12845</b>	<b>12845</b>	<b>10027</b>	<b>94364</b>	<b>7444</b>	<b>19844</b>	<b>175</b>	<b>8</b>	<b>39</b>	<b>27</b>	<b>0</b>	<b>19891</b>	<b>602</b>	<b>18824</b>	<b>295</b>	<b>N.A.</b>	<b>N.A.</b>	<b>19076</b>	<b>300</b>
P.H.O.L. - Ottawa	1875	108	61	3	172	71	1866	86	1841	2	0	0	0	0	1841	18	1827	61	1685	78	1670	0
CHEO - Ottawa	10073	1	0	663	664	465	10073	692	1038	17	0	5	10	5	1038	20	1038	20	1041	169	1025	31
P.H.O.L. - Kingston	1499	62	27	4	93	23	1477	68	1473	1	0	0	0	0	1473	17	1464	60	1304	64	1291	0
UHN / Mount Sinai Hospital	12044	9	0	651	660	218	12044	348	638	7	2	10	2	0	0	0	732	16	0	0	N.A.	N.A.
P.H.O.L. - Toronto	18340	1349	144	36	1529	355	17876	416	17797	34	0	3	0	0	17797	155	17577	440	15253	809	15013	0
Sick Kids Hospital - Toronto	2407	104	13	99	216	168	1936	208	1936	26	5	8	27	0	1936	53	1936	48	1936	366	1936	92
Sunnybrook & Women's College HSC	3456	0	0	124	124	25	3456	64	3456	9	0	17	0	0	3197	11	3316	35	3316	66	120	0
P.H.O.L. - Sault Ste. Marie	600	20	0	0	20	8	576	28	577	1	0	0	0	0	577	5	574	33	526	14	523	0
P.H.O.L. - Timmins	692	65	3	2	70	12	660	32	663	0	0	0	0	0	663	1	660	30	635	5	630	0
St. Joseph's - London	4691	0	0	238	238	114	4691	334	1657	19	4	3	14	0	1657	24	1657	33	880	112	805	22
P.H.O.L. - London	5379	309	112	9	430	145	5344	250	5330	8	0	0	0	0	5332	49	5290	180	4874	296	4822	0
P.H.O.L. - Orillia	1687	81	31	3	115	33	1684	89	1681	4	0	0	0	0	1681	8	1676	50	1490	81	1483	0
P.H.O.L. - Thunder Bay	1412	82	17	9	108	45	1410	64	1410	0	0	1	0	0	1410	19	1399	52	1362	100	1350	0
P.H.O.L. - Sudbury	923	29	14	4	47	15	917	45	918	0	0	1	0	0	918	9	908	14	846	28	835	0
P.H.O.L. - Hamilton	5131	286	39	12	337	117	4982	164	4963	10	1	0	0	0	4963	69	4942	139	4368	339	4343	0
P.H.O.L. - Peterborough	1252	66	4	1	71	10	1243	33	1242	3	0	0	0	0	1241	10	1237	47	987	77	980	0
St. Joseph's - Hamilton	31748	0	0	1617	1617	806	31748	1275	31748	119	6	26	0	0	31748	273	31748	461	31748	1290	0	0
<b>Province of Ontario</b>	<b>103209</b>	<b>2571</b>	<b>465</b>	<b>3475</b>	<b>6511</b>	<b>2630</b>	<b>101983</b>	<b>4196</b>	<b>78368</b>	<b>260</b>	<b>18</b>	<b>74</b>	<b>53</b>	<b>5</b>	<b>77472</b>	<b>741</b>	<b>77981</b>	<b>1719</b>	<b>72251</b>	<b>3894</b>	<b>36826</b>	<b>145</b>
Manitoba	22845	174	134	1340	1648	889	22507	1008	4243	48	9	4	8	0	4243	61	3101	59	4243	495	2668	78
Regina	13894	43	26	1195	1264	665	13903	1043	6096	149	16	6	31	0	6096	100	6019	205	6096	871	6096	151
Saskatoon	4455	0	0	318	318	235	4455	182	4519	98	12	6	7	0	4519	66	4522	27	4519	530	4519	45
Province of Saskatchewan	18349	43	26	1513	1582	900	18358	1225	10615	247	28	12	38	0	10615	166	10541	232	10615	1401	10615	196
Province of Alberta	99516	1741	1287	1346	4374	3417	92064	0	92064	495	102	99	268	0	92064	894	92064	1630	92064	6007	92064	1735
<b>Prairies</b>	<b>140710</b>	<b>1958</b>	<b>1447</b>	<b>4199</b>	<b>7604</b>	<b>5206</b>	<b>132929</b>	<b>2233</b>	<b>106922</b>	<b>790</b>	<b>139</b>	<b>115</b>	<b>314</b>	<b>0</b>	<b>106922</b>	<b>1121</b>	<b>105706</b>	<b>1921</b>	<b>106922</b>	<b>7903</b>	<b>105347</b>	<b>2009</b>
<b>British Columbia</b>	<b>87554</b>	<b>277</b>	<b>244</b>	<b>1852</b>	<b>4091</b>	<b>2575</b>	<b>87196</b>	<b>2771</b>	<b>26218</b>	<b>185</b>	<b>60</b>	<b>38</b>	<b>52</b>	<b>86</b>	<b>26344</b>	<b>168</b>	<b>26158</b>	<b>690</b>	<b>25490</b>	<b>1800</b>	<b>8857</b>	<b>316</b>
Yukon	7951	4	8	55	73	45	7951	23	N.A.	N.A.	N.A.	N.A.	N.A.	N.A.	N.A.	N.A.	N.A.	N.A.	N.A.	N.A.	N.A.	N.A.
Northwest Territories	1563	90	19	1	110	191	1552	0	1552	14	2	13	13	0	1552	21	1552	88	1552	192	1552	76
Nunavut	1324	5	14	42	61	73	1321	53	1321	35	4	1	6	0	1321	28	1321	49	1321	198	283	40
<b>Territories</b>	<b>10838</b>	<b>99</b>	<b>41</b>	<b>98</b>	<b>244</b>	<b>309</b>	<b>10824</b>	<b>76</b>	<b>2873</b>	<b>49</b>	<b>6</b>	<b>14</b>	<b>19</b>	<b>0</b>	<b>2873</b>	<b>49</b>	<b>2873</b>	<b>137</b>	<b>2873</b>	<b>390</b>	<b>1835</b>	<b>116</b>
<b>CANADA</b>	<b>480269</b>	<b>4977</b>	<b>2261</b>	<b>23933</b>	<b>32895</b>	<b>22878</b>	<b>463588</b>	<b>18904</b>	<b>253814</b>	<b>1673</b>	<b>241</b>	<b>296</b>	<b>484</b>	<b>91</b>	<b>253125</b>	<b>2877</b>	<b>251163</b>	<b>4978</b>	<b>227159</b>	<b>14752</b>	<b>179064</b>	<b>3027</b>

Specimens from YT, NT and NU are sent to reference laboratories in other provinces and reported results reflect specimens identified as originating from YT, NT or NU.

Results from British Columbia comprise of specimens from the following sites: BC Children's and Women's Hospital, Children's and Women's Hospital Laboratory, Fraser Health Medical Microbiology Laboratory, Island Health, Providence Health Care, Powell River Hospital, St. Paul's Hospital, Vancouver General Hospital, Victoria General Hospital, Victoria Coastal Health, BCCDC P

Delays in the reporting of data may cause data to change retrospectively. Due to reporting delays, the sum of weekly report totals do not add up to cumulative totals.

For BC, only data from subtyped influenza A specimens are included in the weekly number of influenza detections and so the sum of A(H1N1)pdm09, A(H3), and A(UnS) positive results may not equal the sum of total Flu A positive results.

Figure 1: Number positive laboratory tests for other respiratory viruses by report week, Canada, 2019-20

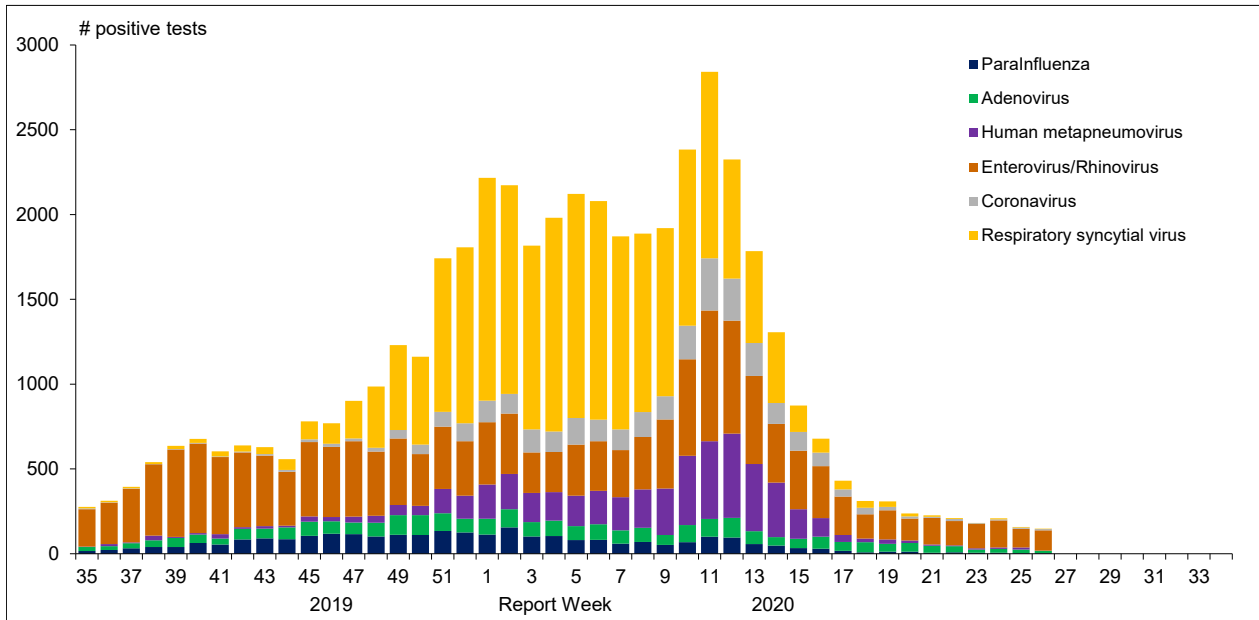


Figure 2 : Positive Influenza Tests (%) in Canada by Region by Week of Report

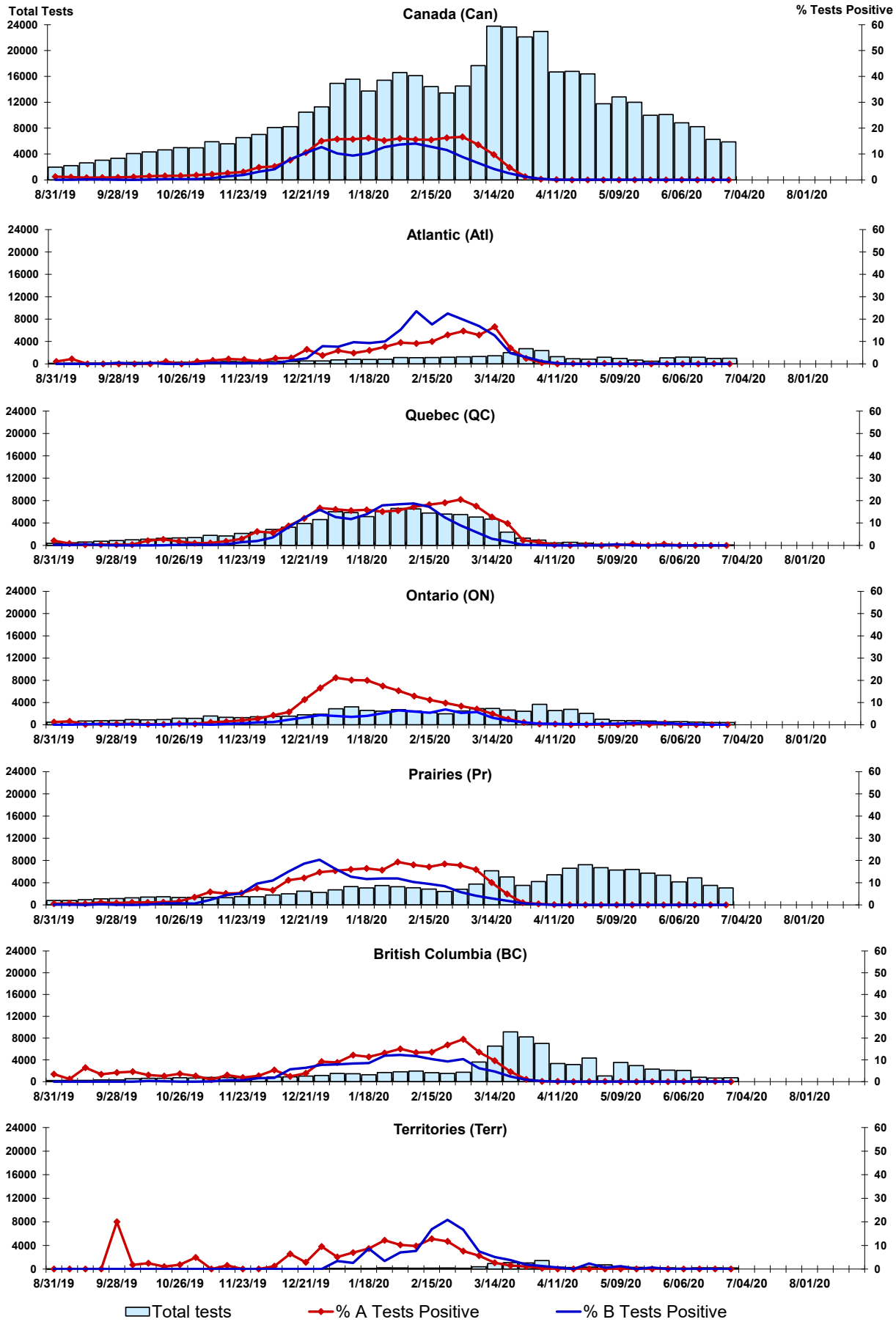


Figure 3: Positive Respiratory syncytial virus (RSV) Tests (%) in Canada by Region by Week of Report

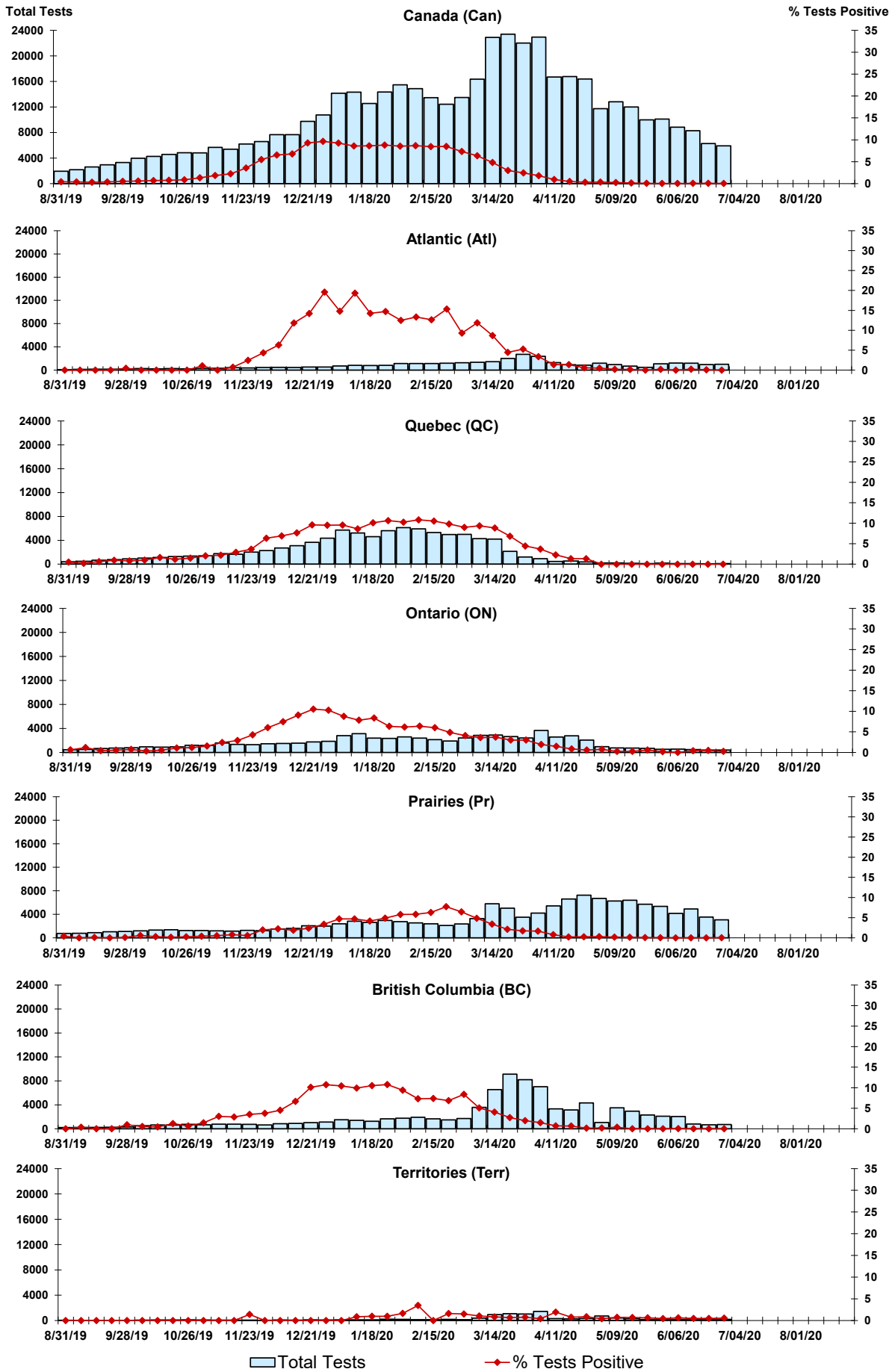


Figure 4: Positive Parainfluenza (PIV) Tests (%) in Canada by Region by Week of Report

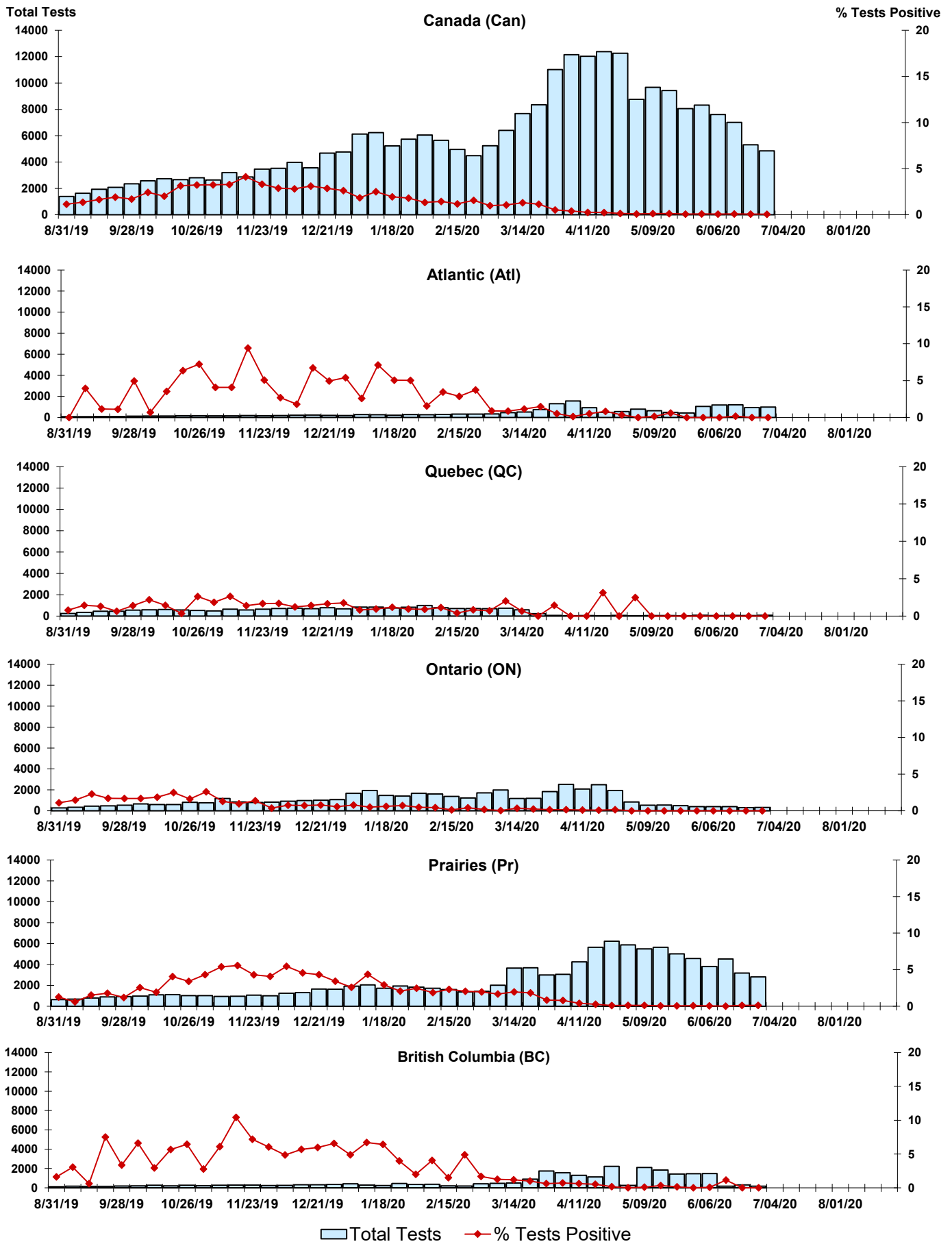


Figure 5: Positive Adenovirus (adeno) Tests (%) in Canada by Region by Week of Report

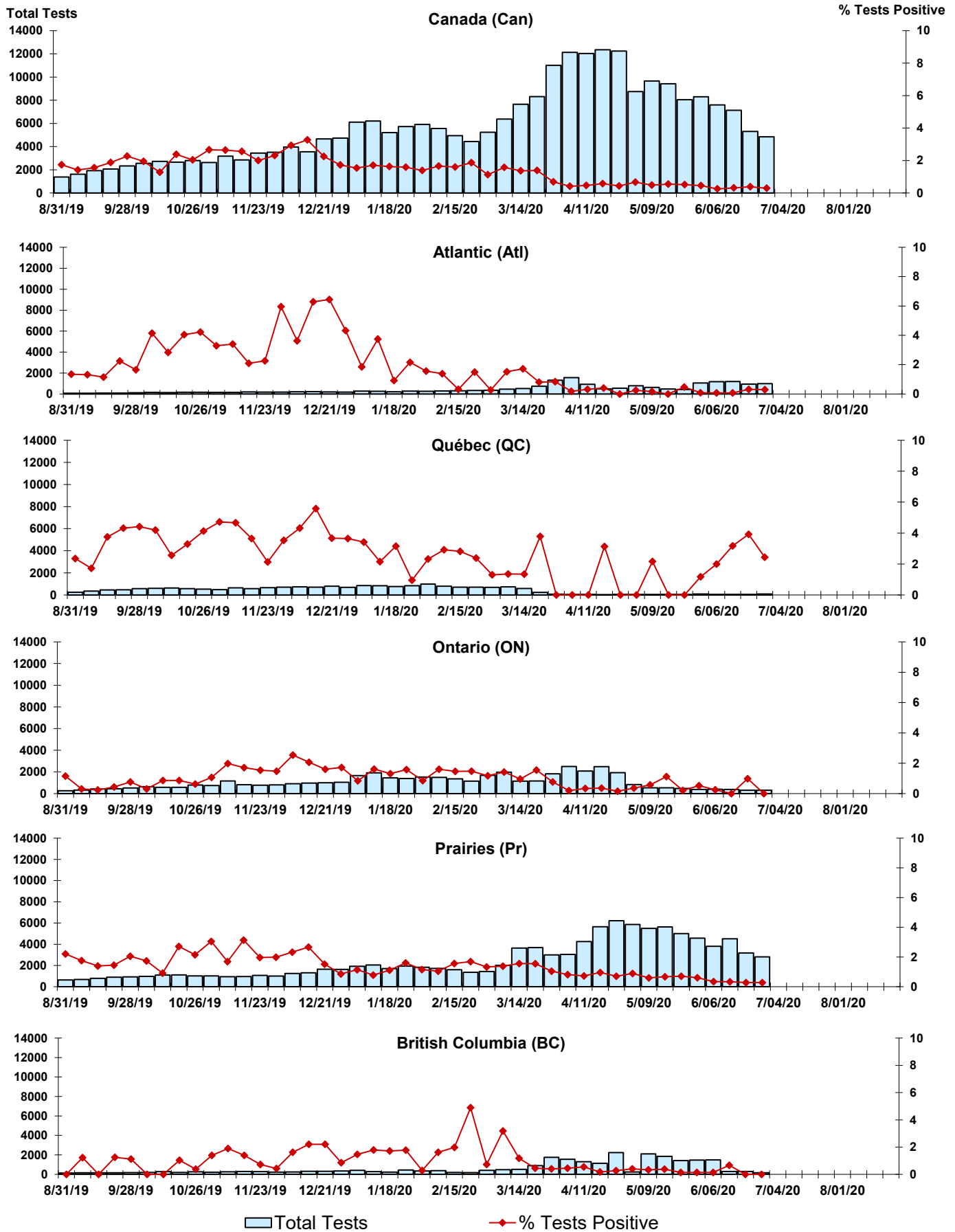


Figure 6: Positive human metapneumovirus (hMPV) Tests (%) in Canada by Region by Week of Report

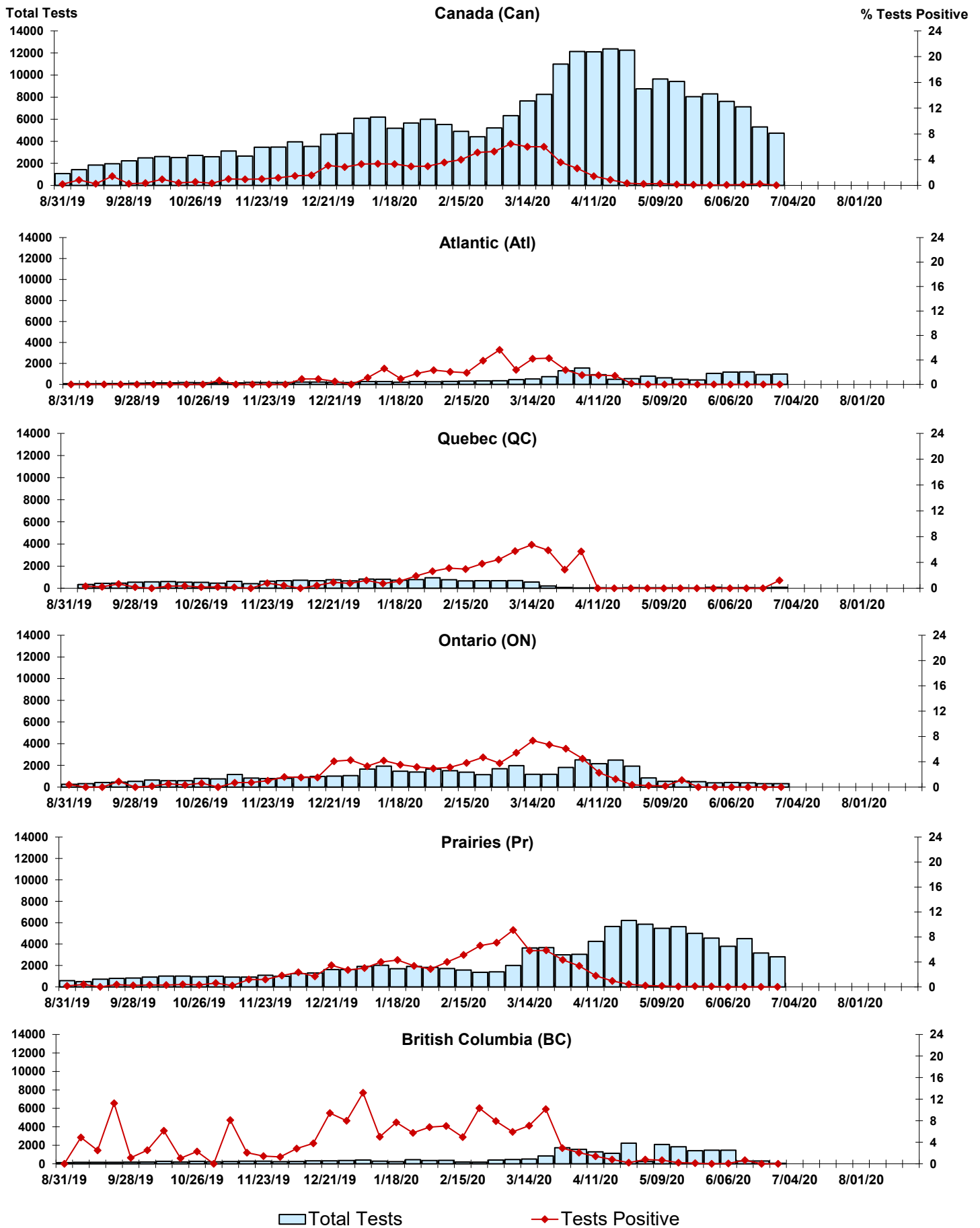




Figure 7: Positive Enterovirus/Rhinovirus (entero/rhino) Tests (%) in Canada by Region by Week of Report

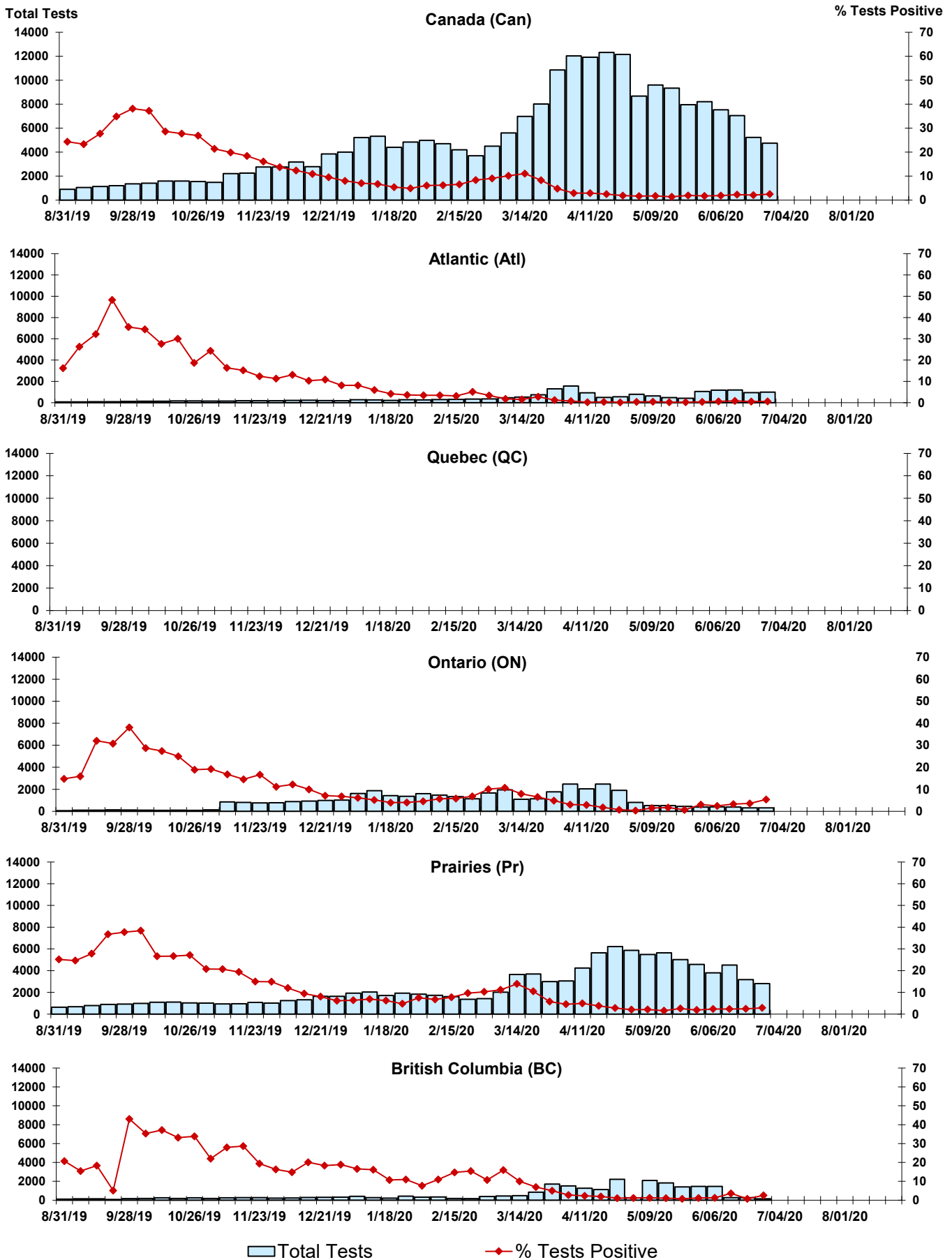
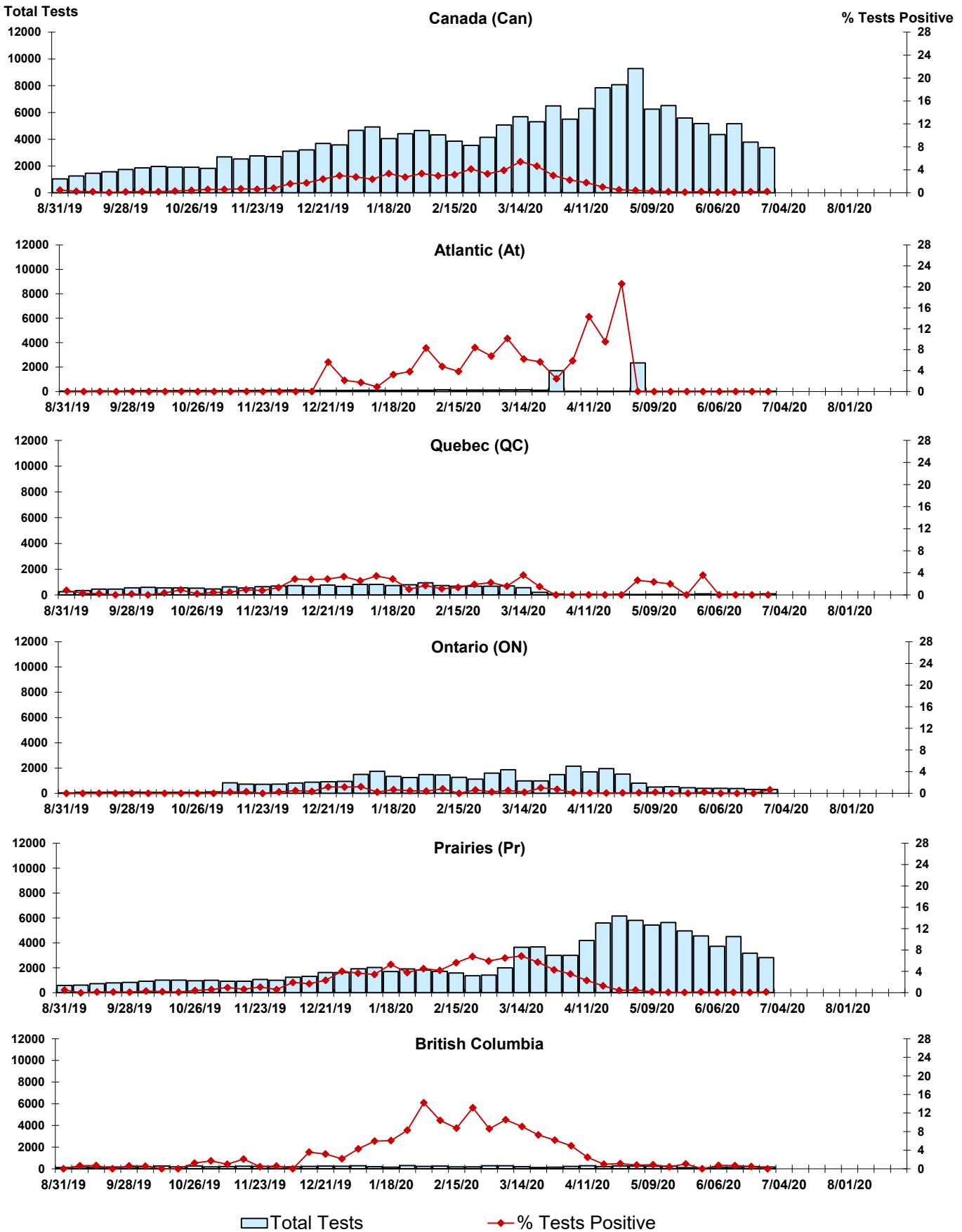


Figure 8: Positive Coronavirus (coron) Tests (%) in Canada by Region by Week of Report



## Abbreviations:

A(H1N1)pdm09: Influenza A(H1N1)pdm09

A(H3): Influenza A(H3N2)

A (UnS): Influenza A (Unsubtyped)

Adeno: Adenovirus

CHEO: Children's Hospital of Eastern Ontario

Coron: Coronavirus

Entero: Enterovirus

hMPV: human metapneumovirus

HSC: Health Sciences Centre

N.A.: Not Applicable

P.H.L.: Public Health Laboratory

P.H.O.L.: Public Health Ontario Laboratory

PIV: Parainfluenza

Rhino: Rhinovirus

RSV: Respiratory syncytial virus

UHN: University Health Network

## Notes:

Specimens from Yukon (YT), Northwest Territories (NT) and Nunavut (NU) are sent to reference laboratories in other provinces. Results reported for the Territories reflect the number of specimens that are identified as originating from YT, NT or NU.

Delays in the reporting of data may cause data to change retrospectively.

Due to reporting delays, the sum of weekly report totals do not add up to cumulative totals.

