

Respiratory Virus Report, Week 27 - ending July 4, 2020

The Respiratory Virus Detection Surveillance System collects data from select laboratories across Canada on the number of tests performed and the number of tests positive for influenza and other respiratory viruses. Data are reported on a weekly basis year-round to the Centre for Immunization and Respiratory Infectious Diseases (CIRID), Public Health Agency of Canada. These data are also summarized in the weekly FluWatch report.

In this Respiratory Virus Report, the number of detections of coronavirus reflects only seasonal human coronaviruses, not the novel pandemic coronavirus (SARS-CoV2) that causes COVID-19. For information on COVID-19, see the [Coronavirus disease \(COVID-19\): Outbreak](#)

Table 1: Respiratory Virus Detections/Isolations for the week ending July 4, 2020 (Reporting Week 202027)

Reporting Laboratory	Flu Tested	A(H1N1)pdm09 Positive	A(H3) Positive	A(UnS) Positive	Total Flu A Positive	Total Flu B Positive	RSV Tested	RSV Positive	PIV Tested	PIV 1 Positive	PIV 2 Positive	PIV 3 Positive	PIV 4 Positive	Other PIV Positive	Adeno Tested	Adeno Positive	hMPV Tested	hMPV Positive	Entero/Rhino Tested	Entero/Rhino Positive	Coron Tested	Coron Positive
Newfoundland	916	0	0	0	0	0	916	1	916	1	0	0	0	0	916	2	916	1	916	6	N.A.	N.A.
Prince Edward Island	0	0	0	0	0	0	0	0	0	0	0	0	0	0	0	0	0	0	0	0	0	0
Nova Scotia	16	0	0	0	0	0	17	0	16	0	0	0	0	0	16	0	16	0	16	0	16	0
New Brunswick	11	0	0	0	0	0	11	0	14	0	0	0	0	0	14	0	14	0	14	0	0	0
Atlantic	943	0	0	0	0	0	944	1	946	1	0	0	0	0	946	2	946	1	946	6	16	0
Région Nord-Est	7	0	0	0	0	0	9	1	0	0	0	0	0	0	0	0	0	0	N.A.	N.A.	0	0
Québec-Chaudière-Appalaches	1	0	0	0	0	0	1	0	8	0	0	0	0	0	8	0	8	0	N.A.	N.A.	8	0
Centre-du-Québec	5	0	0	0	0	0	4	0	1	0	0	0	0	0	1	0	1	0	N.A.	N.A.	1	0
Montréal-Laval	72	0	0	1	1	0	72	1	59	0	1	0	0	0	59	1	59	0	N.A.	N.A.	59	1
Ouest du Québec	4	0	0	0	0	0	4	0	0	0	0	0	0	0	0	0	0	0	N.A.	N.A.	0	0
Montérégie	0	0	0	0	0	0	0	0	0	0	0	0	0	0	0	0	0	0	N.A.	N.A.	0	0
Province of Québec	89	0	0	1	1	0	90	2	68	0	1	0	0	0	68	1	68	0	N.A.	N.A.	68	1
P.H.O.L. - Ottawa	9	0	0	0	0	0	9	0	9	0	0	0	0	0	9	0	9	0	9	0	9	0
CHEO - Ottawa	88	1	0	0	1	0	88	0	25	0	0	0	0	0	25	0	25	0	25	1	25	0
P.H.O.L. - Kingston	90	0	0	0	0	0	90	0	90	0	0	0	0	0	90	0	90	0	90	0	90	0
UHN / Mount Sinai Hospital	0	0	0	0	0	0	0	0	12	0	0	0	0	0	0	0	12	0	0	0	N.A.	N.A.
P.H.O.L. - Toronto	159	0	0	0	0	0	159	0	159	0	0	0	0	0	159	1	159	0	159	2	159	0
Sick Kids Hospital - Toronto	0	0	0	0	0	0	0	0	0	0	0	0	0	0	0	0	0	0	0	0	0	0
Sunnybrook & Women's College HSC	0	0	0	0	0	0	0	0	0	0	0	0	0	0	0	0	0	0	0	0	0	0
P.H.O.L. - Sault Ste. Marie	5	0	0	0	0	0	5	0	5	0	0	0	0	0	5	0	5	0	5	0	5	0
P.H.O.L. - Timmins	1	0	0	0	0	0	1	0	1	0	0	0	0	0	1	0	1	0	1	0	1	0
St. Joseph's - London	15	0	0	0	0	0	13	0	13	0	0	0	0	0	13	0	13	0	13	0	13	0
P.H.O.L. - London	10	0	0	0	0	0	10	0	10	0	0	0	0	0	10	0	10	0	10	0	10	0
P.H.O.L. - Orillia	6	0	0	0	0	0	6	0	6	0	0	0	0	0	6	0	6	0	6	0	6	0
P.H.O.L. - Thunder Bay	47	0	0	0	0	0	47	0	47	0	0	0	0	0	47	1	47	0	47	6	47	0
P.H.O.L. - Sudbury	2	0	0	0	0	0	2	0	2	0	0	0	0	0	2	0	2	0	2	0	2	0
P.H.O.L. - Hamilton	23	0	0	0	0	0	23	0	23	0	0	0	0	0	23	0	23	0	23	0	23	0
P.H.O.L. - Peterborough	6	0	0	0	0	0	6	0	6	0	0	0	0	0	6	0	6	0	6	0	6	0
St. Joseph's - Hamilton	0	0	0	0	0	0	0	0	0	0	0	0	0	0	0	0	0	0	0	0	0	0
Province of Ontario	461	1	0	0	1	0	459	0	408	0	0	0	0	0	396	2	408	0	396	9	396	0
Province of Manitoba	288	0	0	0	0	0	288	0	44	0	0	0	0	0	44	0	39	0	44	1	39	1
Regina	110	0	0	0	0	0	110	0	121	0	0	0	0	0	121	0	121	0	121	16	121	0
Saskatoon	0	0	0	0	0	0	0	0	0	0	0	0	0	0	0	0	0	0	0	0	0	0
Province of Saskatchewan	110	0	0	0	0	0	110	0	121	0	0	0	0	0	121	0	121	0	121	16	121	0
Province of Alberta	2150	0	0	0	0	0	2150	0	2150	1	0	0	1	0	2150	2	2150	0	2150	47	2150	4
Prairies	2548	0	0	0	0	0	2548	0	2315	1	0	0	1	0	2315	2	2310	0	2315	64	2310	5
British Columbia	710	0	0	0	0	0	709	0	182	0	0	0	0	0	182	0	182	0	166	5	166	0
Yukon	95	0	0	0	0	0	95	0	N.A.	N.A.	N.A.	N.A.	N.A.	N.A.	N.A.	N.A.	N.A.	N.A.	N.A.	N.A.	N.A.	N.A.
Northwest Territories	4	0	0	0	0	0	4	0	4	0	0	0	0	0	4	0	4	0	4	1	4	0
Nunavut	5	0	0	0	0	0	5	0	5	0	0	0	0	0	5	1	5	3	5	1	5	1
Territories	104	0	0	0	0	0	104	0	9	0	0	0	0	0	9	1	9	3	9	2	9	1
CANADA	4855	1	0	1	2	0	4854	3	3928	2	1	0	1	0	3916	8	3923	4	3832	86	2965	7

Specimens from Yukon (YT), Northwest Territories (NT) and Nunavut (NU) are sent to reference laboratories in other provinces and reported results reflect specimens identified as originating from YT, NT or NU.

Results from British Columbia comprise of specimens from the following sites: BC Children's and Women's Hospital, Children's and Women's Hospital Laboratory, Fraser Health Medical Microbiology Laboratory, Island Health, Providence Health Care, Powell River Hospital, St. Paul's Hospital, Vancouver General Hospital, Victoria General Hospital, Victoria Coastal Health, BCCDC Public Health Laboratory, Interior Health Authority sites and Northern Health Authority sites.

Delays in the reporting of data may cause data to change retrospectively.

For BC, only data from subtyped influenza A specimens are included in the weekly number of influenza detections and so the sum of A(H1N1)pdm09, A(H3), and A(UnS) positive results may not equal the sum of total Flu A positive results.

Table 2: Respiratory Virus Detections/Isolations for the period August 31, 2019 - July 4, 2020 (Reporting Weeks 201935-202027)

Reporting Laboratory	Flu Tested	A(H1N1)pdm09 Positive	A(H3) Positive	A(UnS) Positive	Total Flu A Positive	Total Flu B Positive	RSV Tested	RSV Positive	PIV Tested	PIV 1 Positive	PIV 2 Positive	PIV 3 Positive	PIV 4 Positive	Other PIV Positive	Adeno Tested	Adeno Positive	hMPV Tested	hMPV Positive	Entero/Rhino Tested	Entero/Rhino Positive	Coron Tested	Coron Positive
Newfoundland	17395	8	33	167	208	513	17395	337	17395	148	2	13	0	0	17395	123	17395	190	17395	388	N.A.	N.A.
Prince Edward Island	1268	0	0	144	144	78	1268	146	48	1	0	0	1	0	48	0	46	0	48	16	48	2
Nova Scotia	6675	3	2	196	201	248	6778	625	645	13	1	3	5	0	679	12	679	11	679	77	692	14
New Brunswick	11854	61	29	957	1047	1292	11795	1077	2447	53	7	0	13	0	2447	63	2447	16	2447	290	6399	125
Atlantic	37192	72	64	1464	1600	2131	37236	2185	20535	215	10	16	19	0	20569	198	20567	217	20569	771	7139	141
Région Nord-Est	9272	0	0	1136	1136	1323	7944	645	0	0	0	0	0	0	0	0	0	0	N.A.	N.A.	0	0
Québec-Chaudière-Appalaches	14030	0	0	1900	1900	1829	13942	1318	2760	31	4	3	14	0	2807	80	2204	25	N.A.	N.A.	2146	35
Centre-du-Québec	19011	0	0	2909	2909	2395	15313	1385	58	0	0	1	0	0	58	0	58	0	N.A.	N.A.	58	1
Montréal-Laval	38363	0	0	4023	4023	2411	37209	2399	17094	144	5	35	13	0	17094	523	16630	270	N.A.	N.A.	16940	265
Ouest du Québec	12602	0	0	1745	1745	1278	11754	1089	0	0	0	0	0	0	0	0	0	0	N.A.	N.A.	0	0
Montérégie	8520	0	0	1133	1133	791	8292	610	0	0	0	0	0	0	0	0	0	0	N.A.	N.A.	0	0
Province of Québec	101798	0	0	12846	12846	10027	94454	7446	19912	175	9	39	27	0	19959	603	18892	295	N.A.	N.A.	19144	301
P.H.O.L. - Ottawa	1884	108	61	3	172	71	1875	86	1850	2	0	0	0	0	1850	18	1836	61	1694	78	1679	0
CHEO - Ottawa	10161	2	0	663	665	465	10161	692	1063	17	0	5	10	5	1063	20	1063	20	1066	170	1054	31
P.H.O.L. - Kingston	1589	62	27	4	93	23	1567	68	1563	1	0	0	0	0	1563	17	1554	60	1394	64	1381	0
UHN / Mount Sinai Hospital	12044	9	0	651	660	218	12044	348	650	7	2	10	2	0	0	0	744	16	0	0	N.A.	N.A.
P.H.O.L. - Toronto	18499	1349	144	36	1529	355	18035	416	17956	34	0	3	0	0	17956	156	17736	440	15412	811	15172	0
Sick Kids Hospital - Toronto	2407	104	13	99	216	168	1936	208	1936	26	5	8	27	0	1936	53	1936	48	1936	366	1936	92
Sunnybrook & Women's College HSC	3456	0	0	124	124	25	3456	64	3456	9	0	17	0	0	3197	11	3316	35	3316	66	120	0
P.H.O.L. - Sault Ste. Marie	605	20	0	0	20	8	581	28	582	1	0	0	0	0	582	5	579	33	531	14	528	0
P.H.O.L. - Timmins	693	65	3	2	70	12	661	32	664	0	0	0	0	0	664	1	661	30	636	5	631	0
St. Joseph's - London	4706	0	0	238	238	114	4704	334	1670	19	4	3	14	0	1670	24	1670	33	893	112	818	22
P.H.O.L. - London	5389	309	112	9	430	145	5354	250	5340	8	0	0	0	0	5342	49	5300	180	4884	296	4832	0
P.H.O.L. - Orillia	1693	81	31	3	115	33	1690	89	1687	4	0	0	0	0	1687	8	1682	50	1496	81	1489	0
P.H.O.L. - Thunder Bay	1459	82	17	9	108	45	1457	64	1457	0	0	1	0	0	1457	20	1446	52	1409	106	1397	0
P.H.O.L. - Sudbury	925	29	14	4	47	15	919	45	920	0	0	1	0	0	920	9	910	14	848	28	837	0
P.H.O.L. - Hamilton	5155	286	39	12	337	117	5006	164	4987	10	1	0	0	0	4987	69	4966	139	4392	339	4367	0
P.H.O.L. - Peterborough	1258	66	4	1	71	10	1249	33	1248	3	0	0	0	0	1247	10	1243	47	993	77	986	0
St. Joseph's - Hamilton	31748	0	0	1617	1617	806	31748	1275	31748	119	6	26	0	0	31748	273	31748	461	31748	1290	0	0
Province of Ontario	103671	2572	465	3475	6512	2630	102443	4196	78777	260	18	74	53	5	77869	743	78390	1719	72648	3903	37227	145
Manitoba	23133	174	134	1340	1648	889	22795	1008	4287	48	9	4	8	0	4287	61	3140	59	4287	496	2707	79
Regina	14024	43	26	1195	1264	665	14033	1043	6217	149	16	6	31	0	6217	100	6140	205	6217	887	6217	151
Saskatoon	4455	0	0	318	318	235	4455	182	4519	98	12	6	7	0	4519	66	4522	27	4519	530	4519	45
Province of Saskatchewan	18479	43	26	1513	1582	900	18488	1225	10736	247	28	12	38	0	10736	166	10662	232	10736	1417	10736	196
Province of Alberta	102496	1741	1287	1346	4374	3417	95044	0	95044	496	102	99	269	0	95044	898	95044	1630	95044	6083	95044	1739
Prairies	144108	1958	1447	4199	7604	5206	136327	2233	110067	791	139	115	315	0	110067	1125	108846	1921	110067	7996	108487	2014
British Columbia	88264	277	244	1852	4091	2575	87905	2771	26400	185	60	38	52	86	26526	168	26340	690	25656	1805	9023	316
Yukon	8046	4	8	55	73	45	8046	23	N.A.	N.A.	N.A.	N.A.	N.A.	N.A.	N.A.	N.A.	N.A.	N.A.	N.A.	N.A.	N.A.	N.A.
Northwest Territories	1571	90	19	1	110	191	1560	0	1560	14	2	13	13	0	1560	21	1560	88	1560	193	1560	76
Nunavut	1347	5	14	42	61	73	1344	53	1344	35	4	1	6	0	1344	29	1344	69	1344	199	306	41
Territories	10964	99	41	98	244	309	10950	76	2904	49	6	14	19	0	2904	50	2904	157	2904	392	1866	117
CANADA	485997	4978	2261	23934	32897	22878	469315	18907	258595	1675	242	296	485	91	257894	2887	255939	4999	231844	14867	182886	3034

Specimens from YT, NT and NU are sent to reference laboratories in other provinces and reported results reflect specimens identified as originating from YT, NT or NU.

Results from British Columbia comprise of specimens from the following sites: BC Children's and Women's Hospital, Children's and Women's Hospital Laboratory, Fraser Health Medical Microbiology Laboratory, Island Health, Providence Health Care, Powell River Hospital, St. Paul's Hospital, Vancouver General Hospital, Victoria General Hospital, Victoria Coastal Health, BCCDC P

Delays in the reporting of data may cause data to change retrospectively. Due to reporting delays, the sum of weekly report totals do not add up to cumulative totals.

For BC, only data from subtyped influenza A specimens are included in the weekly number of influenza detections and so the sum of A(H1N1)pdm09, A(H3), and A(UnS) positive results may not equal the sum of total Flu A positive results.

Figure 1: Number positive laboratory tests for other respiratory viruses by report week, Canada, 2019-20

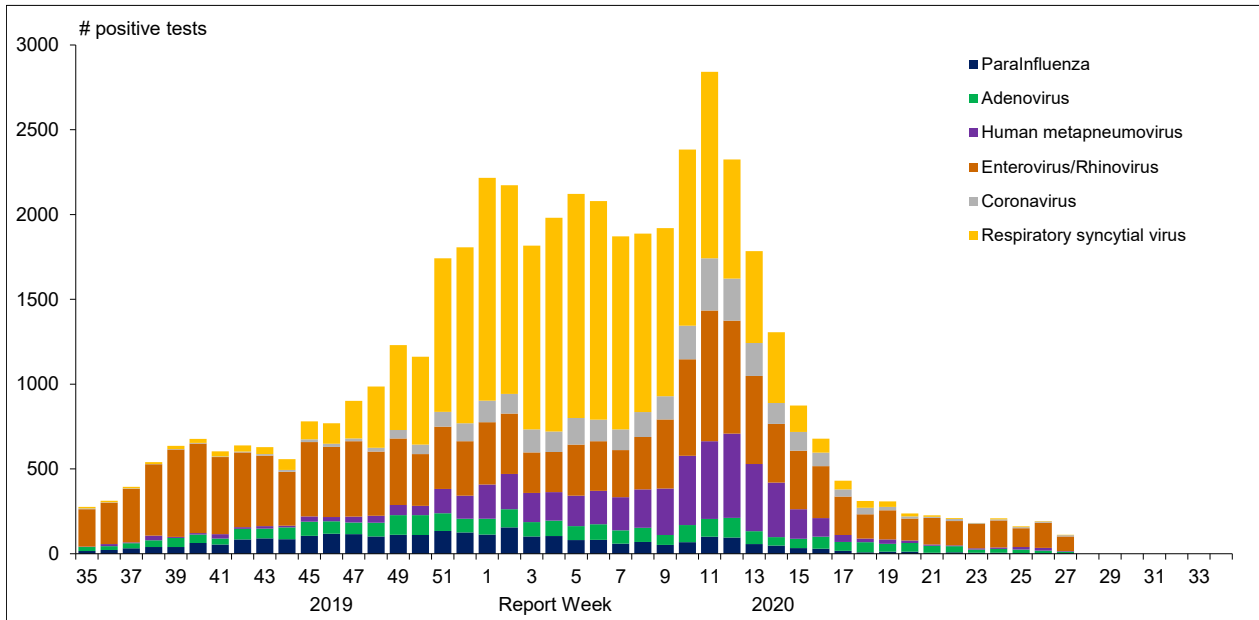


Figure 2 : Positive Influenza Tests (%) in Canada by Region by Week of Report

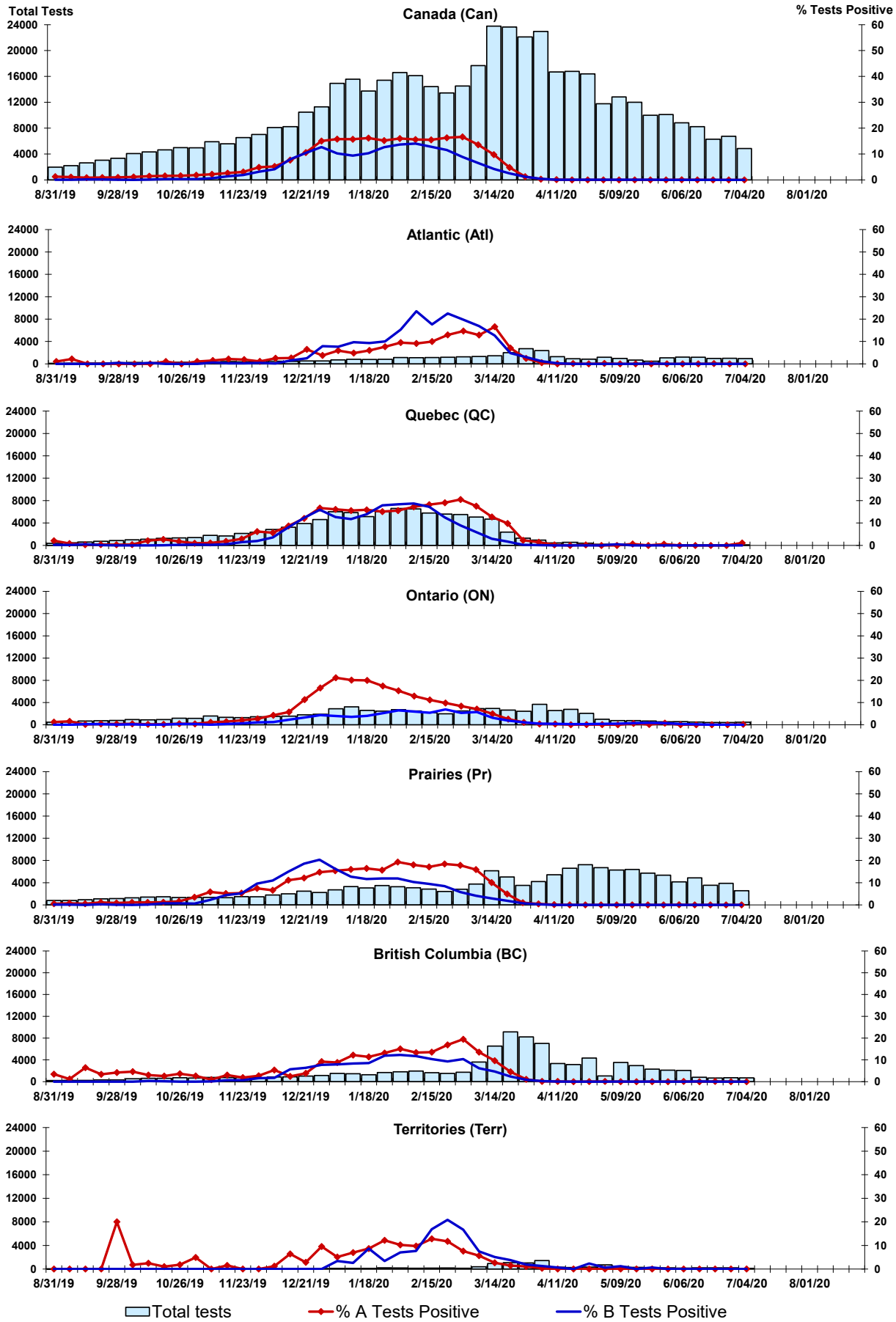


Figure 3: Positive Respiratory syncytial virus (RSV) Tests (%) in Canada by Region by Week of Report

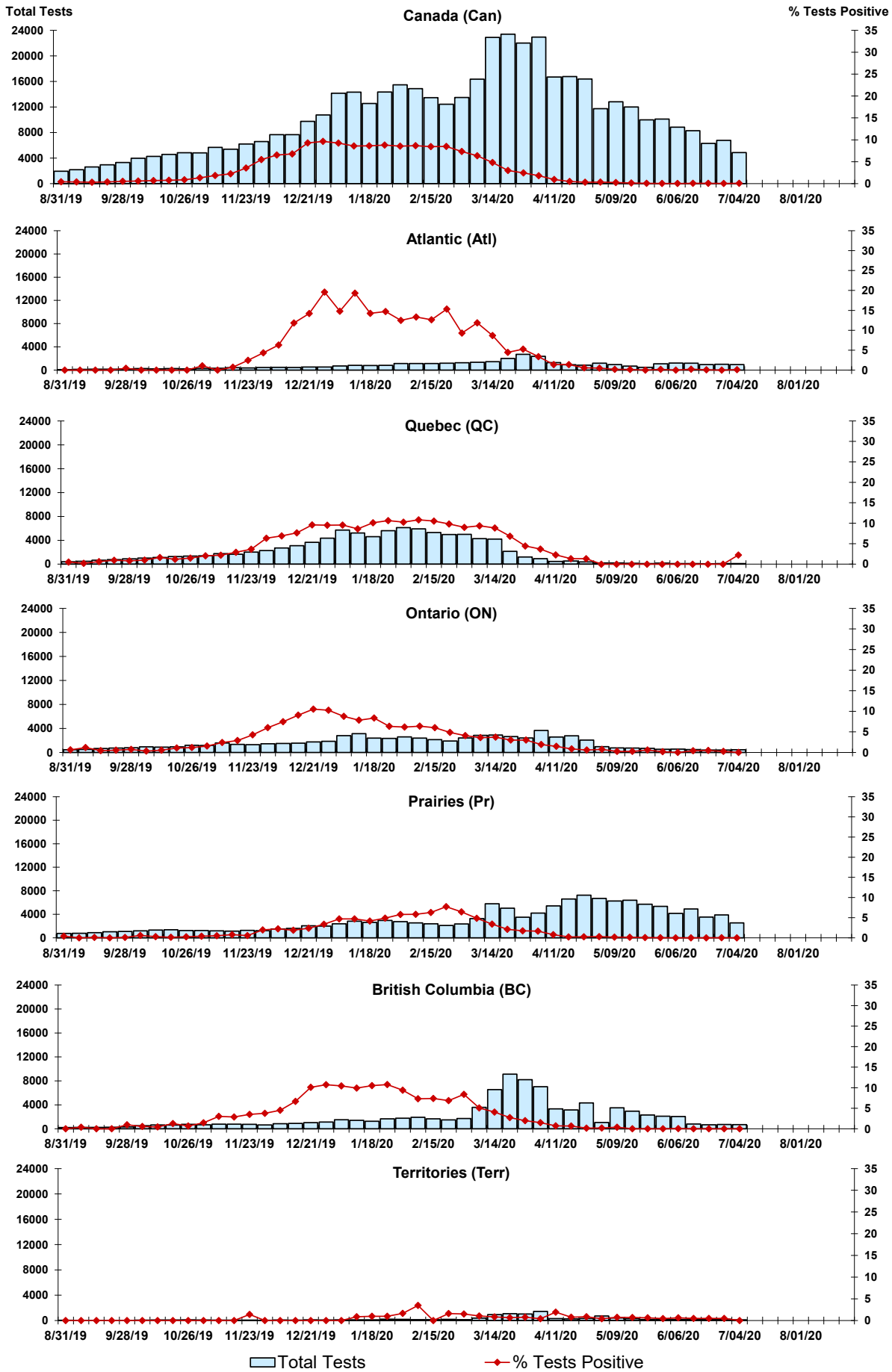


Figure 4: Positive Parainfluenza (PIV) Tests (%) in Canada by Region by Week of Report

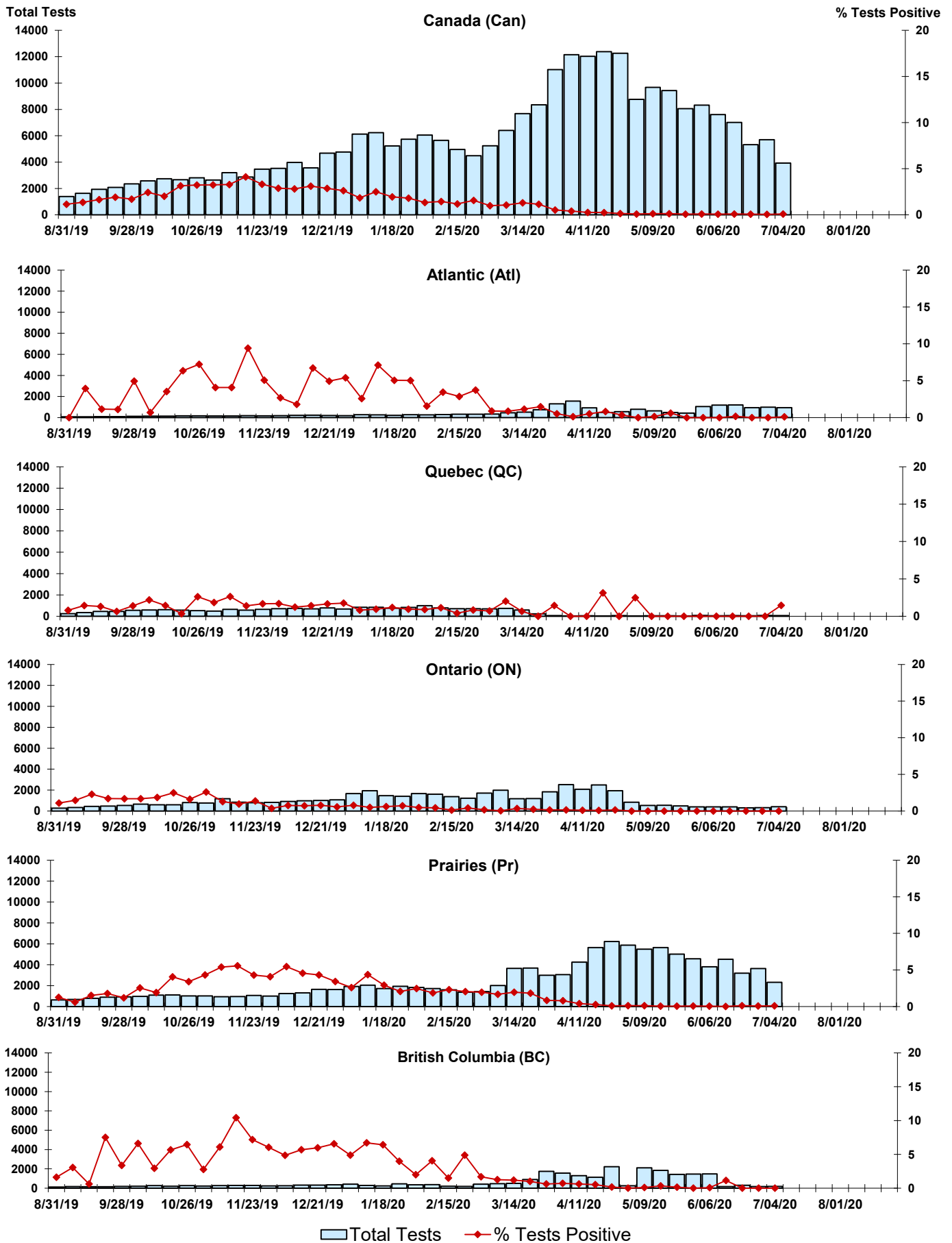


Figure 5: Positive Adenovirus (adeno) Tests (%) in Canada by Region by Week of Report

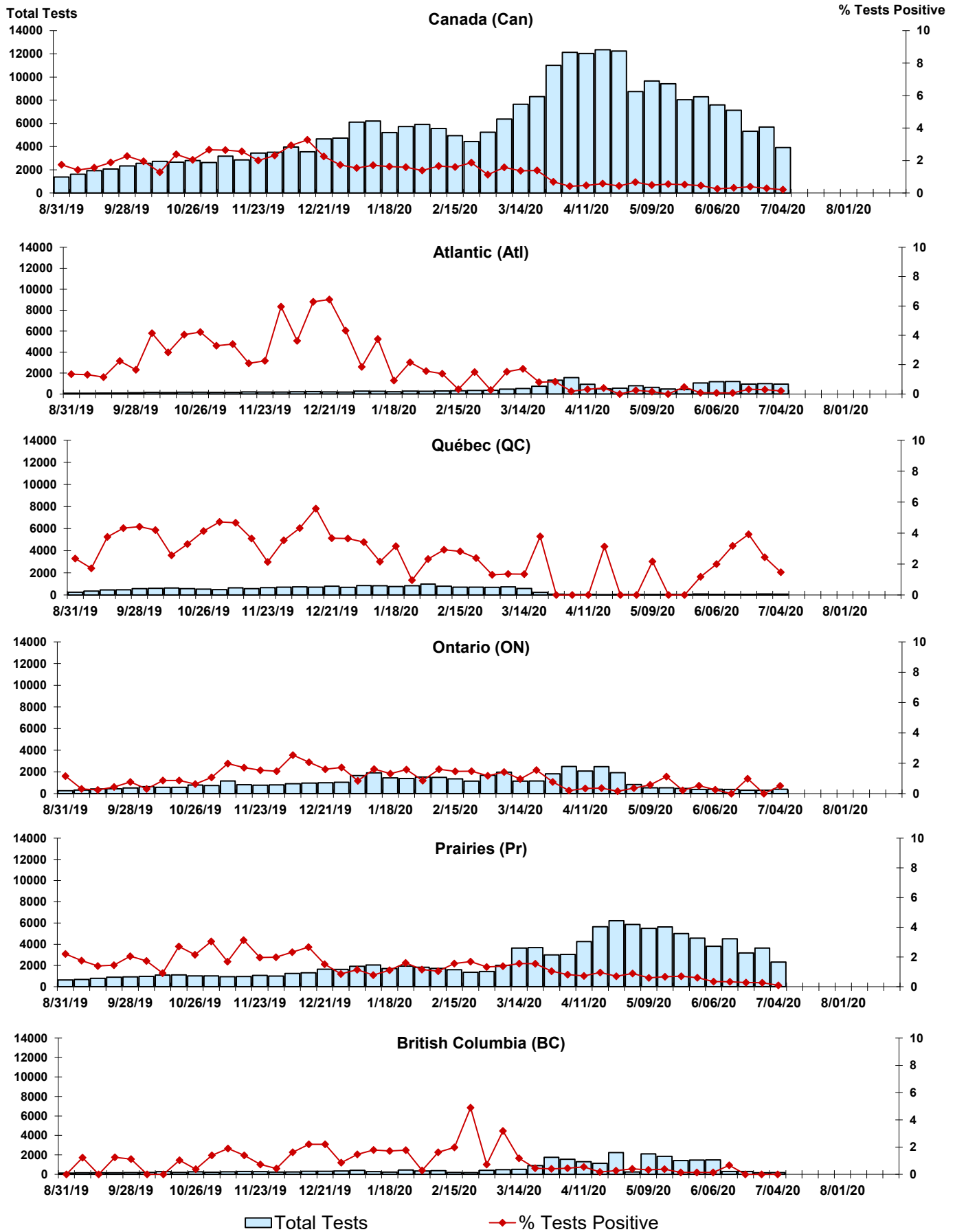


Figure 6: Positive human metapneumovirus (hMPV) Tests (%) in Canada by Region by Week of Report

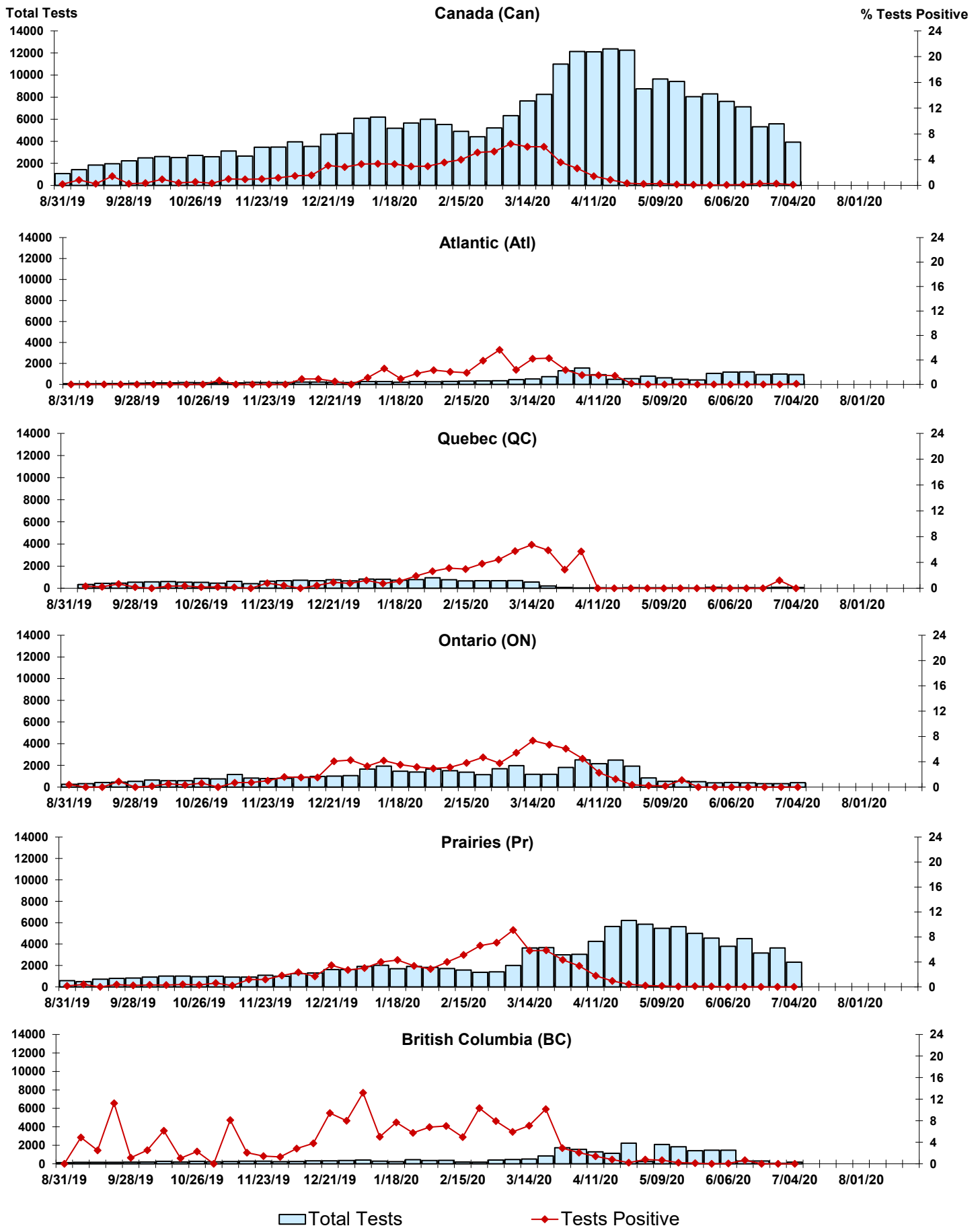


Figure 7: Positive Enterovirus/Rhinovirus (entero/rhino) Tests (%) in Canada by Region by Week of Report

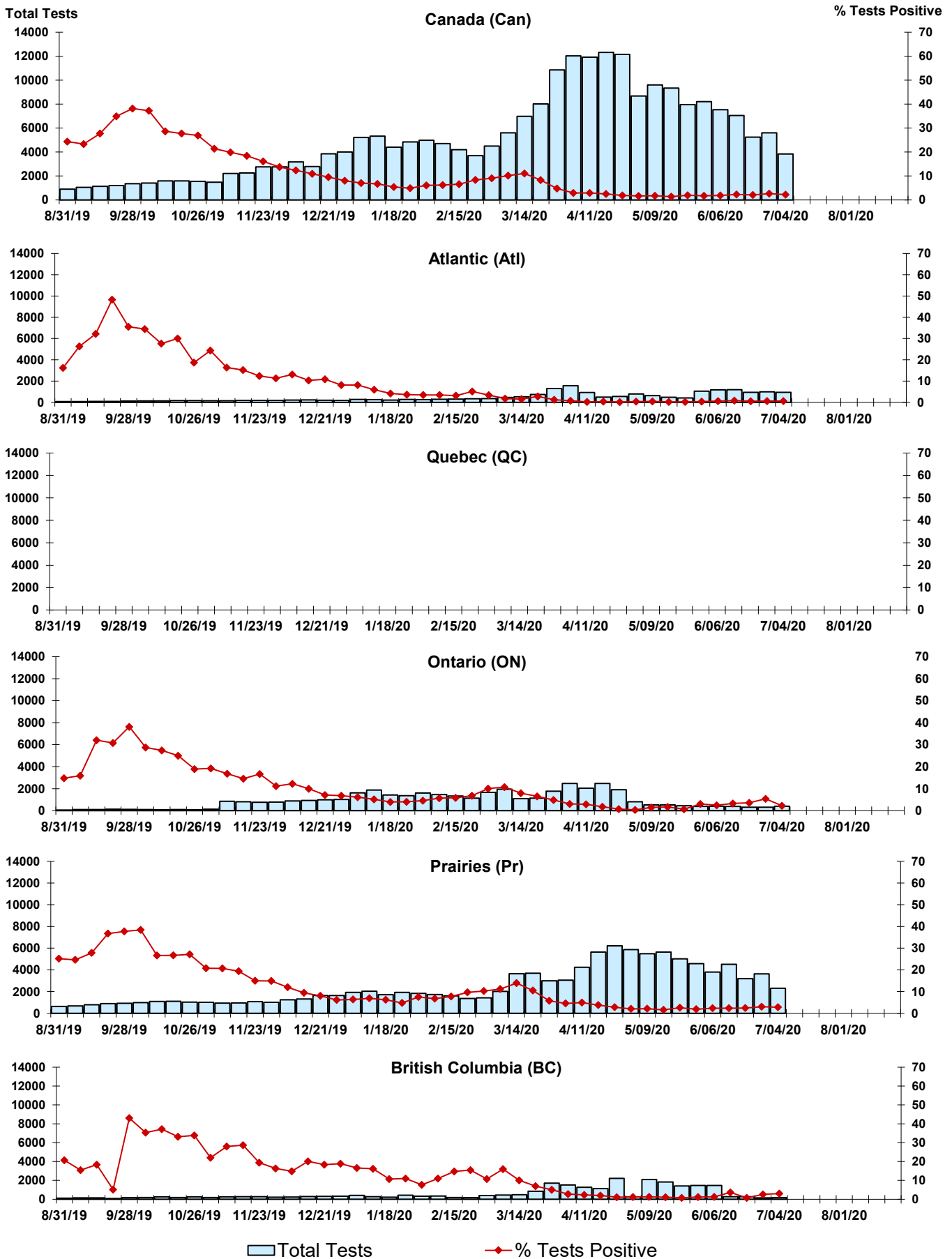
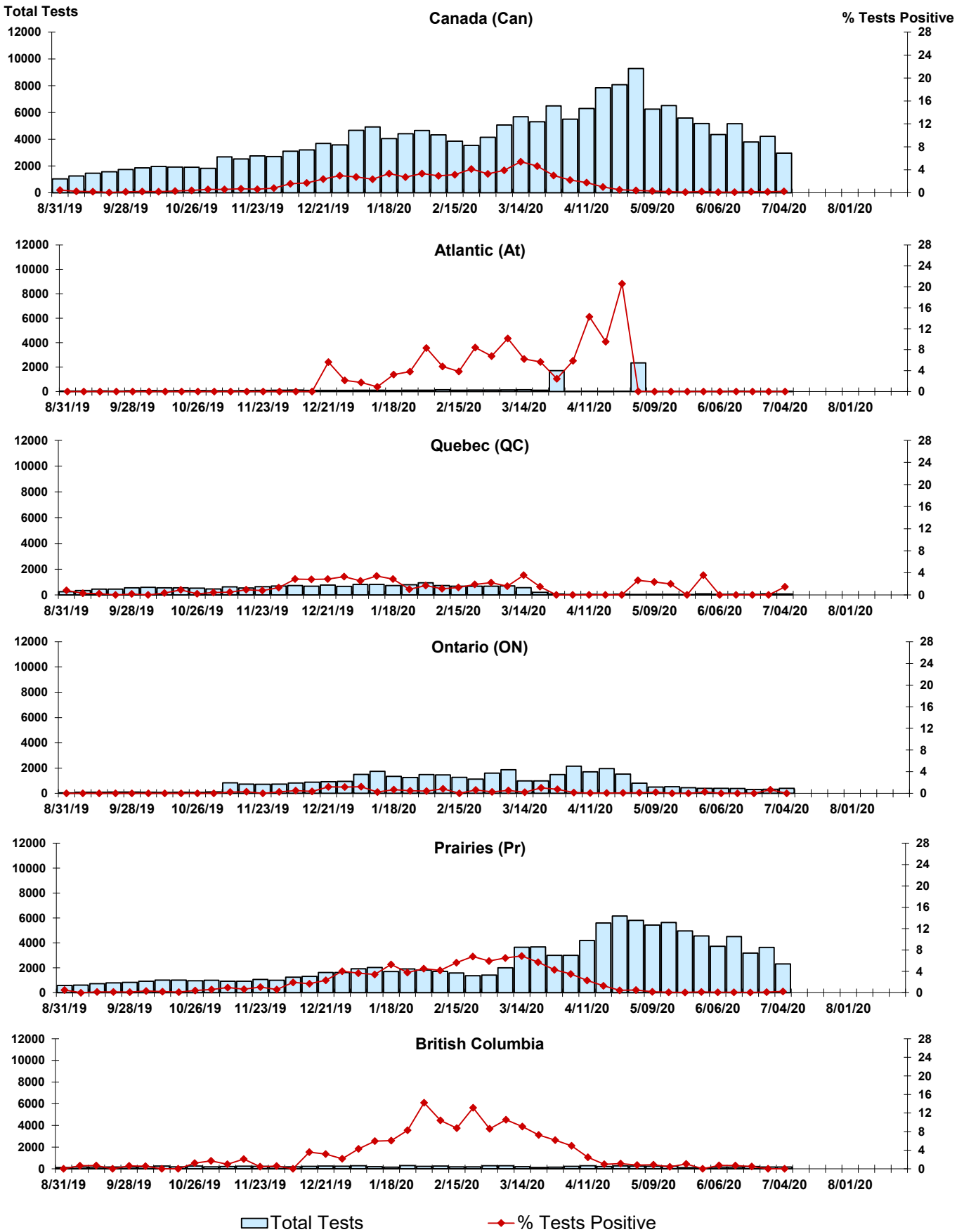


Figure 8: Positive Coronavirus (coron) Tests (%) in Canada by Region by Week of Report



Abbreviations:

A(H1N1)pdm09: Influenza A(H1N1)pdm09

A(H3): Influenza A(H3N2)

A (UnS): Influenza A (Unsubtyped)

Adeno: Adenovirus

CHEO: Children's Hospital of Eastern Ontario

Coron: Coronavirus

Entero: Enterovirus

hMPV: human metapneumovirus

HSC: Health Sciences Centre

N.A.: Not Applicable

P.H.L.: Public Health Laboratory

P.H.O.L.: Public Health Ontario Laboratory

PIV: Parainfluenza

Rhino: Rhinovirus

RSV: Respiratory syncytial virus

UHN: University Health Network

Notes:

Specimens from Yukon (YT), Northwest Territories (NT) and Nunavut (NU) are sent to reference laboratories in other provinces. Results reported for the Territories reflect the number of specimens that are identified as originating from YT, NT or NU.

Delays in the reporting of data may cause data to change retrospectively.

Due to reporting delays, the sum of weekly report totals do not add up to cumulative totals.

