

# Respiratory Virus Detections in Canada

## Respiratory Virus Report, Week 03 - ending January 18, 2020

The Respiratory Virus Detection Surveillance System collects data from select laboratories across Canada on the number of tests performed and the number of tests positive for influenza and other respiratory viruses. Data are reported on a weekly basis year-round to the Centre for Immunization and Respiratory Infectious Diseases (CIRID), Public Health Agency of Canada. These data are also summarized in the weekly FluWatch report.

**Table 1: Respiratory Virus Detections/Isolations for the week ending January 18, 2020 (Reporting Week 202003)**

Reporting Laboratory	Flu Tested	A(H1N1)pdm09 Positive	A(H3) Positive	A(UnS) Positive	Total Flu A Positive	Total Flu B Positive	RSV Tested	RSV Positive	PIV Tested	PIV 1 Positive	PIV 2 Positive	PIV 3 Positive	PIV 4 Positive	Other PIV Positive	Adeno Tested	Adeno Positive	hMPV Tested	hMPV Positive	Entero/Rhino Tested	Entero/Rhino Positive	Coron Tested	Coron Positive
Newfoundland	125	0	0	8	8	10	125	10	125	8	0	0	0	0	125	1	125	2	125	3	N.A.	N.A.
Prince Edward Island	36	0	0	2	2	1	36	2	1	0	0	0	0	0	1	0	1	0	1	0	1	0
Nova Scotia	133	0	0	5	5	4	135	26	12	0	0	0	0	0	12	0	12	0	12	2	12	0
New Brunswick	509	4	2	27	33	59	509	76	79	3	0	0	0	0	79	1	79	0	79	4	79	3
<b>Atlantic</b>	<b>803</b>	<b>4</b>	<b>2</b>	<b>42</b>	<b>48</b>	<b>74</b>	<b>805</b>	<b>114</b>	<b>217</b>	<b>11</b>	<b>0</b>	<b>0</b>	<b>0</b>	<b>0</b>	<b>217</b>	<b>2</b>	<b>217</b>	<b>2</b>	<b>217</b>	<b>9</b>	<b>92</b>	<b>3</b>
Région Nord-Est	370	0	0	39	39	47	297	17	0	0	0	0	0	0	0	0	0	0	N.A.	N.A.	0	0
Québec-Chaudière-Appalaches	481	0	0	90	90	135	464	99	107	2	0	1	1	0	109	5	84	0	N.A.	N.A.	84	3
Centre-du-Québec	1256	0	0	215	215	185	1047	111	0	0	0	0	0	0	0	0	0	0	N.A.	N.A.	0	0
Montréal-Laval	1773	0	0	300	300	187	1671	108	694	3	0	1	1	0	694	19	687	8	N.A.	N.A.	687	18
Ouest du Québec	676	0	0	101	101	100	629	79	0	0	0	0	0	0	0	0	0	0	N.A.	N.A.	0	0
Montérégie	483	0	0	73	73	61	390	51	0	0	0	0	0	0	0	0	0	0	N.A.	N.A.	0	0
<b>Province of Québec</b>	<b>5039</b>	<b>0</b>	<b>0</b>	<b>818</b>	<b>818</b>	<b>715</b>	<b>4498</b>	<b>465</b>	<b>801</b>	<b>5</b>	<b>0</b>	<b>2</b>	<b>2</b>	<b>0</b>	<b>803</b>	<b>24</b>	<b>771</b>	<b>8</b>	<b>N.A.</b>	<b>N.A.</b>	<b>771</b>	<b>21</b>
P.H.O.L. - Ottawa	37	2	4	0	6	1	37	6	37	0	0	0	0	0	37	1	37	0	37	2	37	0
CHEO - Ottawa	332	0	0	51	51	21	332	43	24	0	0	0	0	0	24	0	24	2	24	0	24	4
P.H.O.L. - Kingston	43	3	1	0	4	2	43	5	43	0	0	0	0	0	43	2	43	6	43	0	43	0
UHN / Mount Sinai Hospital	491	0	0	67	67	13	491	30	18	0	1	0	0	0	0	0	18	0	0	0	N.A.	N.A.
P.H.O.L. - Toronto	625	201	9	7	217	14	526	28	526	0	0	0	0	0	526	8	524	17	526	18	524	0
Sick Kids Hospital - Toronto	63	9	1	0	10	3	63	12	63	0	0	0	0	0	63	2	63	1	63	7	63	5
Sunnybrook & Women's College HSC	84	0	0	12	12	1	84	1	84	1	0	1	0	0	84	0	84	1	84	0	0	0
P.H.O.L. - Sault Ste. Marie	16	3	0	0	3	0	16	0	16	0	0	0	0	0	16	1	16	0	16	0	16	0
P.H.O.L. - Timmins	28	9	1	0	10	0	22	3	22	0	0	0	0	0	22	0	22	1	22	0	22	0
St. Joseph's - London	193	0	0	19	19	7	193	25	45	1	0	0	5	0	45	0	45	1	21	1	21	0
P.H.O.L. - London	191	13	11	0	24	7	190	17	190	0	0	0	0	0	190	1	190	14	190	4	190	0
P.H.O.L. - Orillia	82	7	0	0	7	1	82	11	82	0	0	0	0	0	82	0	82	0	82	5	82	0
P.H.O.L. - Thunder Bay	40	6	2	2	10	2	40	4	40	0	0	0	0	0	40	2	40	1	40	2	40	0
P.H.O.L. - Sudbury	36	3	1	2	6	1	36	2	36	0	0	0	0	0	36	0	36	3	36	3	36	0
P.H.O.L. - Hamilton	222	33	5	1	39	14	209	11	209	0	0	0	0	0	209	2	209	3	209	12	209	0
P.H.O.L. - Peterborough	33	5	0	0	5	0	33	2	33	0	0	0	0	0	33	0	32	2	33	3	32	0
St. Joseph's - Hamilton	786	0	0	182	182	53	786	64	786	6	1	0	0	0	786	16	786	14	786	35	0	0
<b>Province of Ontario</b>	<b>3302</b>	<b>294</b>	<b>35</b>	<b>343</b>	<b>672</b>	<b>140</b>	<b>3183</b>	<b>264</b>	<b>2254</b>	<b>8</b>	<b>2</b>	<b>1</b>	<b>5</b>	<b>0</b>	<b>2236</b>	<b>35</b>	<b>2251</b>	<b>66</b>	<b>2212</b>	<b>92</b>	<b>1339</b>	<b>9</b>
Manitoba	710	12	3	112	127	64	685	52	109	0	0	0	0	0	109	0	97	1	109	13	97	1
Regina	454	0	0	108	108	56	454	22	229	8	2	0	3	0	229	4	229	13	229	23	229	8
Saskatoon	220	0	0	12	12	13	220	24	220	2	0	0	0	0	220	1	220	1	220	7	220	3
Saskatchewan	674	0	0	120	120	69	674	46	449	10	2	0	3	0	449	5	449	14	449	30	449	11
Alberta	1440	77	74	73	224	190	1078	0	1078	18	0	0	12	0	1078	12	1078	49	1078	60	1078	78
<b>Prairies</b>	<b>2824</b>	<b>89</b>	<b>77</b>	<b>305</b>	<b>471</b>	<b>323</b>	<b>2437</b>	<b>98</b>	<b>1636</b>	<b>28</b>	<b>2</b>	<b>0</b>	<b>15</b>	<b>0</b>	<b>1636</b>	<b>17</b>	<b>1624</b>	<b>64</b>	<b>1636</b>	<b>103</b>	<b>1624</b>	<b>90</b>
<b>Province of British Columbia</b>	<b>1258</b>	<b>5</b>	<b>2</b>	<b>44</b>	<b>143</b>	<b>107</b>	<b>1248</b>	<b>131</b>	<b>234</b>	<b>5</b>	<b>2</b>	<b>2</b>	<b>1</b>	<b>5</b>	<b>234</b>	<b>4</b>	<b>234</b>	<b>18</b>	<b>215</b>	<b>23</b>	<b>149</b>	<b>9</b>
Yukon	60	0	0	4	4	1	60	0	N.A.	N.A.	N.A.	N.A.	N.A.	N.A.	N.A.	N.A.	N.A.	N.A.	N.A.	N.A.	N.A.	N.A.
Northwest Territories	25	3	0	0	3	7	25	0	25	0	0	0	0	0	25	1	25	5	25	3	25	2
Nunavut	12	0	0	2	2	1	12	1	12	1	0	0	0	0	12	0	12	0	12	4	0	0
<b>Territories</b>	<b>97</b>	<b>3</b>	<b>0</b>	<b>6</b>	<b>9</b>	<b>9</b>	<b>97</b>	<b>1</b>	<b>37</b>	<b>1</b>	<b>0</b>	<b>0</b>	<b>0</b>	<b>0</b>	<b>37</b>	<b>1</b>	<b>37</b>	<b>5</b>	<b>37</b>	<b>7</b>	<b>25</b>	<b>2</b>
<b>CANADA</b>	<b>13323</b>	<b>395</b>	<b>116</b>	<b>1558</b>	<b>2161</b>	<b>1368</b>	<b>12268</b>	<b>1073</b>	<b>5179</b>	<b>58</b>	<b>6</b>	<b>5</b>	<b>23</b>	<b>5</b>	<b>5163</b>	<b>83</b>	<b>5134</b>	<b>163</b>	<b>4317</b>	<b>234</b>	<b>4000</b>	<b>134</b>

Specimens from Yukon (YT), Northwest Territories (NT) and Nunavut (NU) are sent to reference laboratories in other provinces and reported results reflect specimens identified as originating from YT, NT or NU.

Results from British Columbia comprise of specimens from the following sites: BC Children's and Women's Hospital, Children's and Women's Hospital Laboratory, Fraser Health Medical Microbiology Laboratory, Island Health, Providence Health Care, Powell River Hospital, St. Paul's Hospital, Vancouver General Hospital, Victoria General Hospital, Victoria Coastal Health, BCCDC Public Health Laboratory, Interior Health Authority sites and Northern Health Authority sites.

Delays in the reporting of data may cause data to change retrospectively.

For British Columbia, only data from subtyped influenza A specimens are included in the weekly number of influenza detections. The sum of A(H1N1)pdm09, A(H3), and A(UnS) positive results may not equal the sum of total Flu A positive results.

**Table 2: Respiratory Virus Detections/Isolations for the period August 25, 2019 - January 18, 2020 (Reporting Weeks 201935-202003)**

Reporting Laboratory	Flu Tested	A(H1N1)pdm09 Positive	A(H3) Positive	A(UnS) Positive	Total Flu A Positive	Total Flu B Positive	RSV Tested	RSV Positive	PIV Tested	PIV 1 Positive	PIV 2 Positive	PIV 3 Positive	PIV 4 Positive	Other PIV Positive	Adeno Tested	Adeno Positive	hMPV Tested	hMPV Positive	Entero/Rhino Tested	Entero/Rhino Positive	Coron Tested	Coron Positive
Newfoundland	1829	4	24	23	51	33	1829	123	1829	83	0	3	0	0	1829	68	1829	13	1829	275	N.A.	N.A.
Prince Edward Island	416	0	0	10	10	12	416	12	28	1	0	0	0	0	28	0	26	0	28	15	28	0
Nova Scotia	1372	0	0	32	32	23	1390	73	347	13	1	2	5	0	352	6	352	2	352	69	362	4
New Brunswick	4321	23	9	119	151	211	4262	469	1300	41	3	0	8	0	1300	46	1300	3	1300	228	1300	9
<b>Atlantic</b>	<b>7938</b>	<b>27</b>	<b>33</b>	<b>184</b>	<b>244</b>	<b>279</b>	<b>7897</b>	<b>677</b>	<b>3504</b>	<b>138</b>	<b>4</b>	<b>5</b>	<b>13</b>	<b>0</b>	<b>3509</b>	<b>120</b>	<b>3507</b>	<b>18</b>	<b>3509</b>	<b>587</b>	<b>1690</b>	<b>13</b>
Région Nord-Est	2608	0	0	156	156	177	2165	72	0	0	0	0	0	0	0	0	0	0	N.A.	N.A.	0	0
Québec-Chaudière-Appalaches	5382	0	0	409	409	299	5726	387	1752	24	4	2	12	0	1785	68	1463	3	N.A.	N.A.	1461	23
Centre-du-Québec	8094	0	0	1165	1165	844	6749	461	0	0	0	0	0	0	0	0	0	0	N.A.	N.A.	0	0
Montréal-Laval	21643	0	0	1881	1881	1450	21067	1301	11106	119	4	10	12	0	11106	397	10664	57	N.A.	N.A.	10974	168
Ouest du Québec	6246	0	0	639	639	734	5845	489	0	0	0	0	0	0	0	0	0	0	N.A.	N.A.	0	0
Montérégie	4707	0	0	514	514	345	4612	350	0	0	0	0	0	0	0	0	0	0	N.A.	N.A.	0	0
<b>Province of Québec</b>	<b>48680</b>	<b>0</b>	<b>0</b>	<b>4764</b>	<b>4764</b>	<b>3849</b>	<b>46164</b>	<b>3060</b>	<b>12858</b>	<b>143</b>	<b>8</b>	<b>12</b>	<b>24</b>	<b>0</b>	<b>12891</b>	<b>465</b>	<b>12127</b>	<b>60</b>	<b>N.A.</b>	<b>N.A.</b>	<b>12435</b>	<b>191</b>
P.H.O.L. - Ottawa	698	30	45	0	75	30	689	38	664	2	0	0	0	0	664	7	653	12	508	50	496	0
CHEO - Ottawa	4162	1	0	293	294	155	4162	407	534	1	0	4	7	5	534	10	534	6	537	122	525	16
P.H.O.L. - Kingston	479	20	13	0	33	7	469	27	465	1	0	0	0	0	465	14	457	16	296	39	284	0
UHN / Mount Sinai Hospital	6223	7	0	470	477	83	6223	209	365	6	2	10	2	0	0	0	363	9	0	0	N.A.	N.A.
P.H.O.L. - Toronto	7553	818	87	24	929	88	7231	232	7152	34	0	3	0	0	7152	78	7004	115	4608	299	4440	0
Sick Kids Hospital - Toronto	1254	75	9	1	85	37	1254	181	1254	23	5	1	25	0	1254	33	1254	28	1254	265	1254	45
Sunnybrook & Women's College HSC	807	0	0	84	84	5	807	17	807	8	0	3	0	0	807	3	807	9	807	27	120	0
P.H.O.L. - Sault Ste. Marie	207	6	0	0	6	4	207	3	207	1	0	0	0	0	207	1	205	3	156	9	154	0
P.H.O.L. - Timmins	142	25	1	0	26	0	129	3	129	0	0	0	0	0	129	0	128	10	101	1	98	0
St. Joseph's - London	1780	0	0	104	104	32	1780	184	681	17	2	1	11	0	681	14	681	17	386	75	365	5
P.H.O.L. - London	1994	102	55	1	158	31	1973	136	1958	8	0	0	0	0	1958	24	1938	49	1502	163	1470	0
P.H.O.L. - Orillia	792	40	24	1	65	22	792	42	789	4	0	0	0	0	789	3	788	14	598	54	595	0
P.H.O.L. - Thunder Bay	238	17	2	3	22	20	236	4	236	0	0	1	0	0	236	4	227	5	188	20	178	0
P.H.O.L. - Sudbury	289	8	9	2	19	5	284	10	284	0	0	1	0	0	284	6	275	6	212	14	202	0
P.H.O.L. - Hamilton	2160	138	25	2	165	37	2095	95	2074	10	1	0	0	0	2074	36	2060	39	1479	154	1461	0
P.H.O.L. - Peterborough	593	21	2	0	23	2	590	19	589	3	0	0	0	0	588	5	585	16	334	40	328	0
St. Joseph's - Hamilton	5545	0	0	781	781	192	5545	812	5545	96	5	3	0	0	5545	125	5545	69	5545	482	0	0
<b>Province of Ontario</b>	<b>34916</b>	<b>1308</b>	<b>272</b>	<b>1766</b>	<b>3346</b>	<b>750</b>	<b>34466</b>	<b>2419</b>	<b>23733</b>	<b>214</b>	<b>15</b>	<b>27</b>	<b>45</b>	<b>5</b>	<b>23367</b>	<b>363</b>	<b>23504</b>	<b>423</b>	<b>18511</b>	<b>1814</b>	<b>11970</b>	<b>66</b>
Manitoba	6793	63	59	340	462	547	6572	427	2501	33	4	3	3	0	2501	44	1589	21	2501	417	1589	15
Regina	4293	0	0	414	414	138	4293	65	2484	101	7	2	14	0	2484	48	2407	29	2484	597	2484	23
Saskatoon	3504	0	0	220	220	181	3504	101	3504	92	7	4	3	0	3504	56	3507	8	3504	493	3504	24
Saskatchewan	7797	0	0	634	634	319	7797	166	5988	193	14	6	17	0	5988	104	5914	37	5988	1090	5988	47
Alberta	19963	382	903	488	1773	2070	16068	0	16068	382	36	24	136	0	16068	276	16068	367	16068	2729	16068	370
<b>Prairies</b>	<b>34553</b>	<b>445</b>	<b>962</b>	<b>1462</b>	<b>2869</b>	<b>2936</b>	<b>30437</b>	<b>593</b>	<b>24557</b>	<b>608</b>	<b>54</b>	<b>33</b>	<b>156</b>	<b>0</b>	<b>24557</b>	<b>424</b>	<b>23571</b>	<b>425</b>	<b>24557</b>	<b>4236</b>	<b>23645</b>	<b>432</b>
<b>Province of British Columbia</b>	<b>15704</b>	<b>146</b>	<b>227</b>	<b>178</b>	<b>886</b>	<b>593</b>	<b>15475</b>	<b>881</b>	<b>5200</b>	<b>155</b>	<b>44</b>	<b>24</b>	<b>37</b>	<b>28</b>	<b>5197</b>	<b>60</b>	<b>5171</b>	<b>258</b>	<b>4812</b>	<b>1093</b>	<b>4167</b>	<b>72</b>
Yukon	901	4	8	10	22	2	901	1	N.A.	N.A.	N.A.	N.A.	N.A.	N.A.	N.A.	N.A.	N.A.	N.A.	N.A.	N.A.	N.A.	N.A.
Northwest Territories	396	21	8	1	30	11	389	0	389	7	0	2	3	0	389	11	389	33	389	102	389	23
Nunavut	170	0	0	4	4	3	167	2	167	7	3	0	3	0	167	10	167	1	167	63	48	1
<b>Territories</b>	<b>1467</b>	<b>25</b>	<b>16</b>	<b>15</b>	<b>56</b>	<b>16</b>	<b>1457</b>	<b>3</b>	<b>556</b>	<b>14</b>	<b>3</b>	<b>2</b>	<b>6</b>	<b>0</b>	<b>556</b>	<b>21</b>	<b>556</b>	<b>34</b>	<b>556</b>	<b>165</b>	<b>437</b>	<b>24</b>
<b>CANADA</b>	<b>143258</b>	<b>1951</b>	<b>1510</b>	<b>8369</b>	<b>12165</b>	<b>8423</b>	<b>135896</b>	<b>7633</b>	<b>70408</b>	<b>1272</b>	<b>128</b>	<b>103</b>	<b>281</b>	<b>33</b>	<b>70077</b>	<b>1453</b>	<b>68436</b>	<b>1218</b>	<b>51945</b>	<b>7895</b>	<b>54344</b>	<b>798</b>

Specimens from YT, NT and NU are sent to reference laboratories in other provinces and reported results reflect specimens identified as originating from YT, NT or NU.

Results from British Columbia comprise of specimens from the following sites: BC Children's and Women's Hospital, Children's and Women's Hospital Laboratory, Fraser Health Medical Microbiology Laboratory, Island Health, Providence Health Care, Powell River Hospital, St. Paul's Hospital, Vancouver General Hospital, Victoria General Hospital, Victoria Coastal Health, BCCDC Public Health Laboratory, Interior Health Authority sites and Northern Health Authority sites.

Delays in the reporting of data may cause data to change retrospectively.

Due to reporting delays, the sum of weekly report totals do not add up to cumulative totals.

For BC, only data from subtyped influenza A specimens are included in the weekly number of influenza detections. The sum of A(H1N1)pdm09, A(H3), and A(UnS) positive results may not equal the sum of total Flu A positive results.

Figure 1: Number positive laboratory tests for other respiratory viruses by report week, Canada, 2019-2020

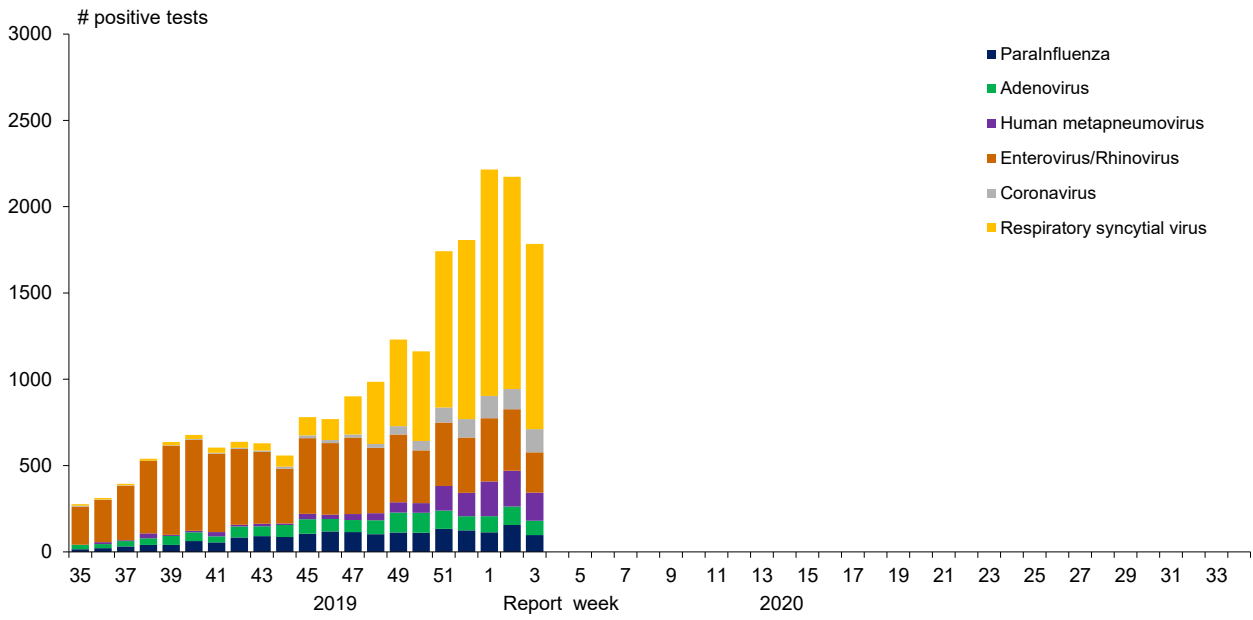


Figure 2: Positive Influenza Tests (%) in Canada by Region by Week of Report

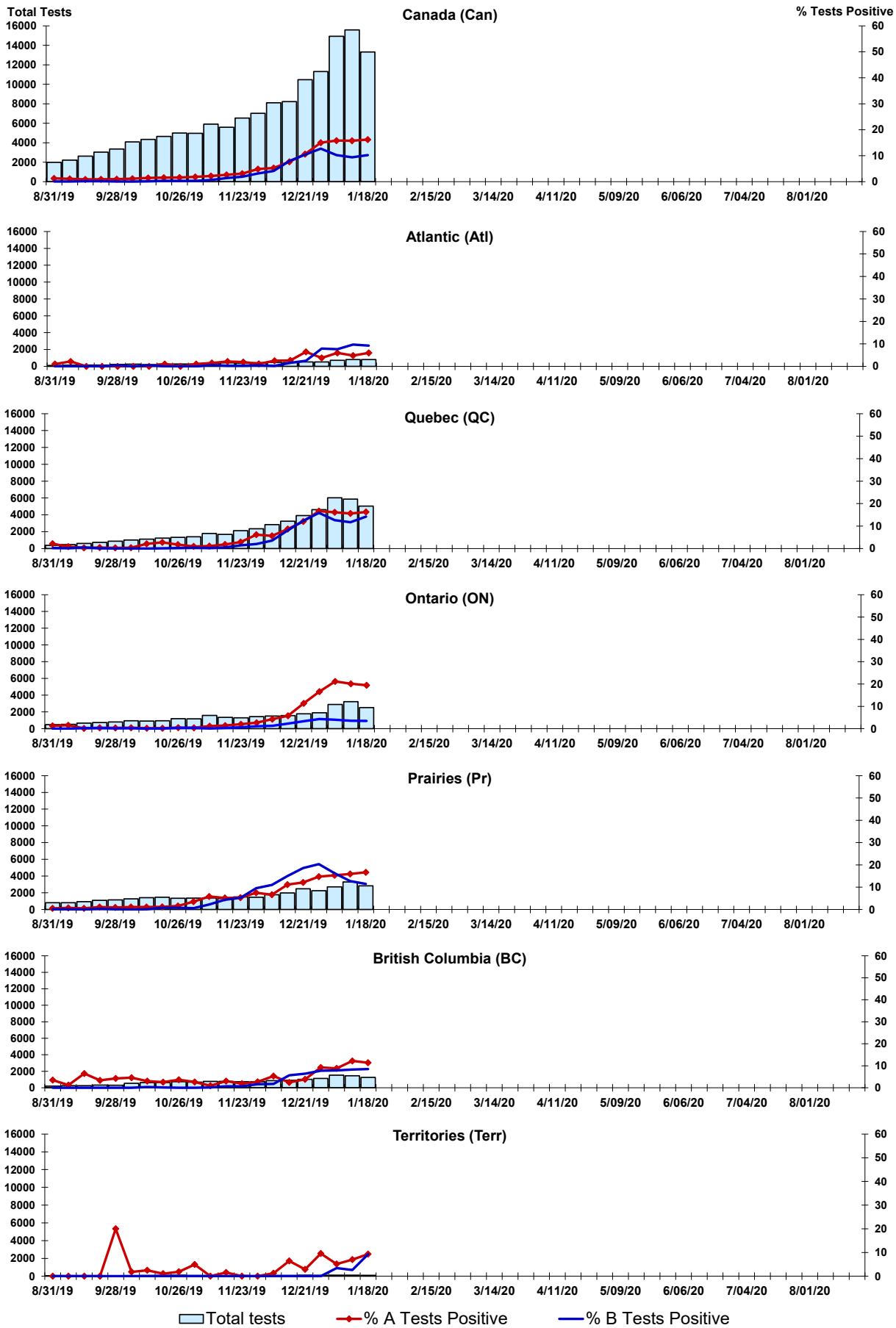


Figure 3: Positive Respiratory syncytial virus (RSV) Tests (%) in Canada by Region by Week of Report

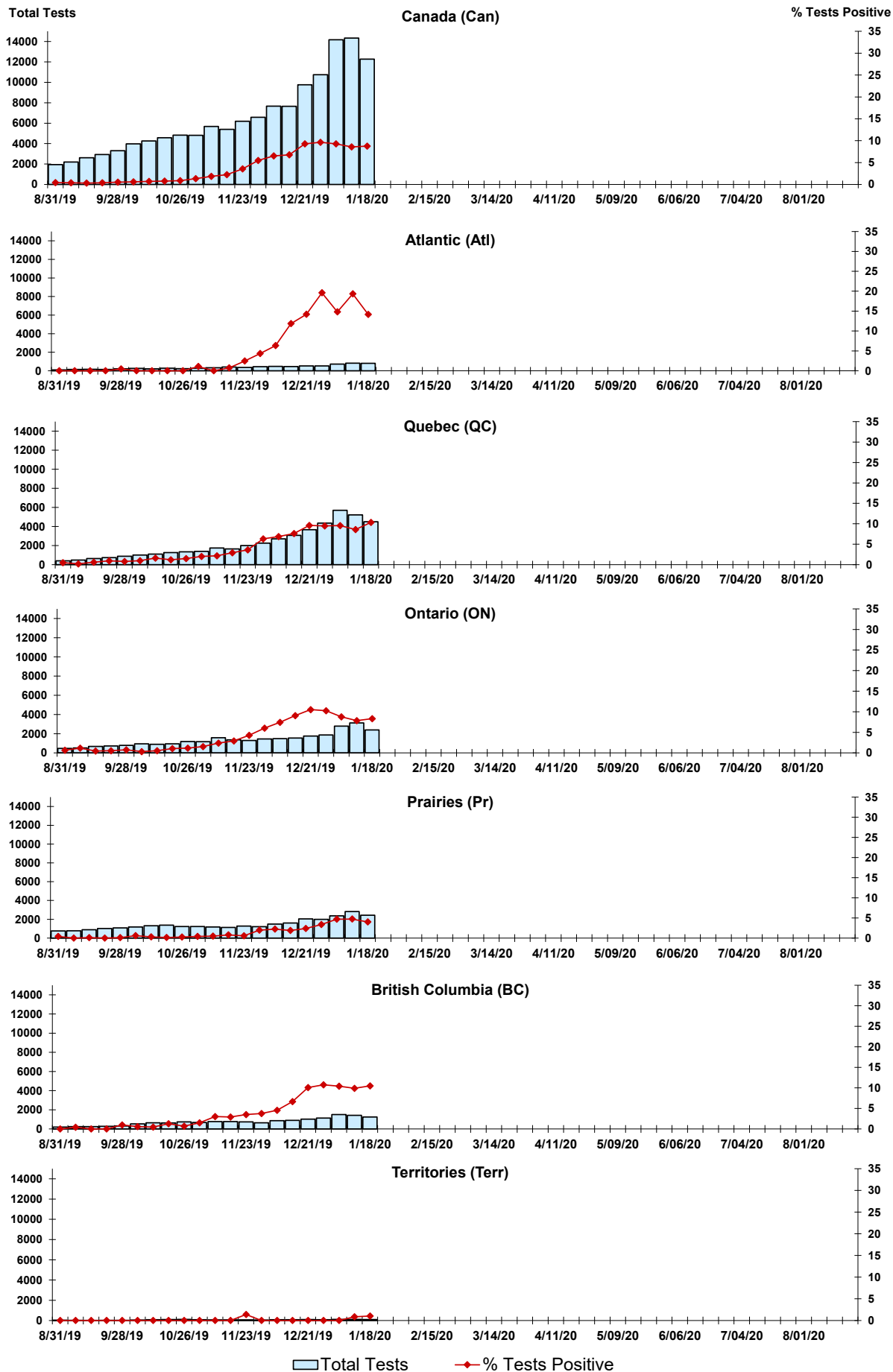


Figure 4: Positive Parainfluenza (PIV) Tests (%) in Canada by Region by Week of Report

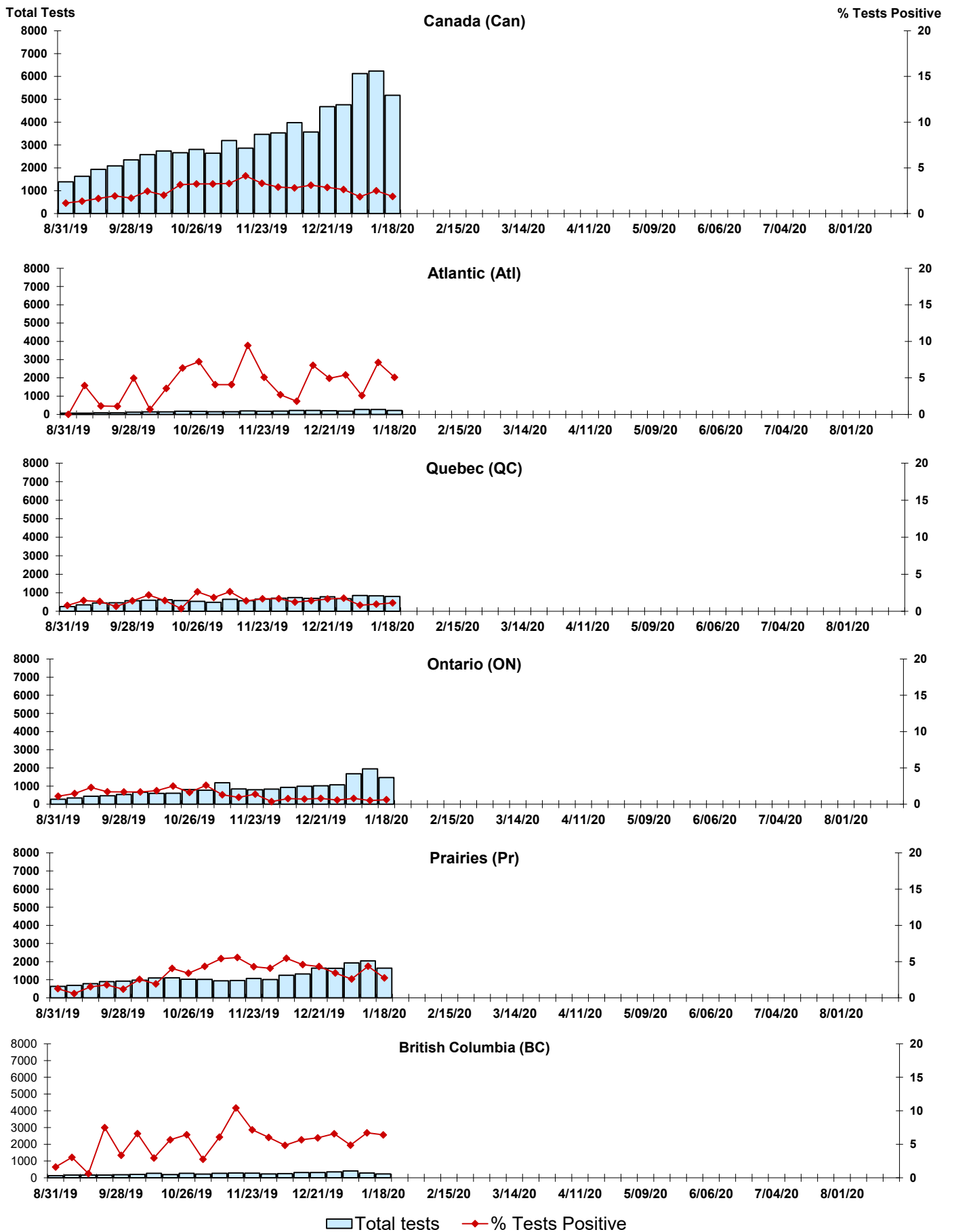


Figure 5: Positive Adenovirus (adeno) Tests (%) in Canada by Region by Week of Report

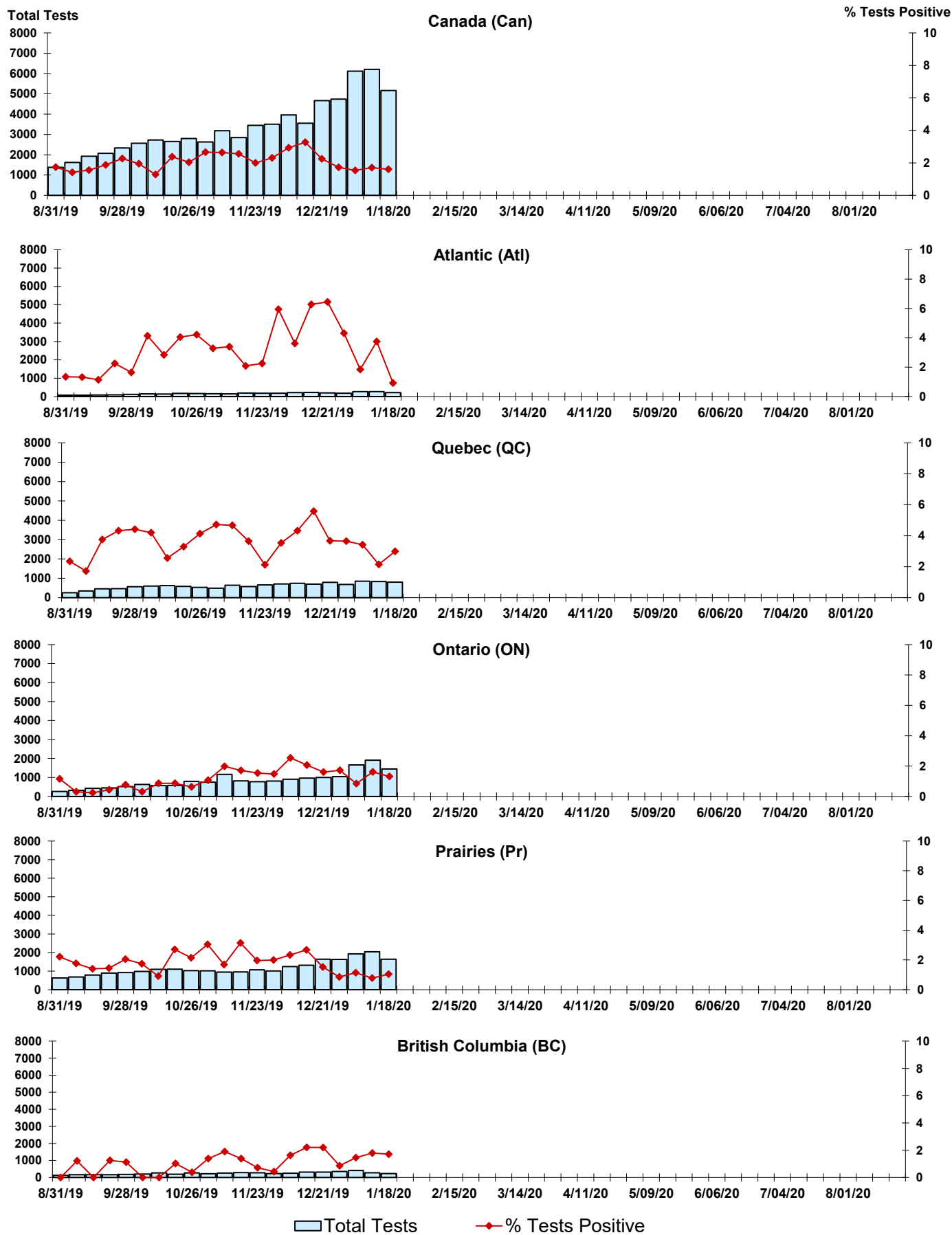


Figure 6: Positive human metapneumovirus (hMPV) Tests (%) in Canada by Region by Week of Report

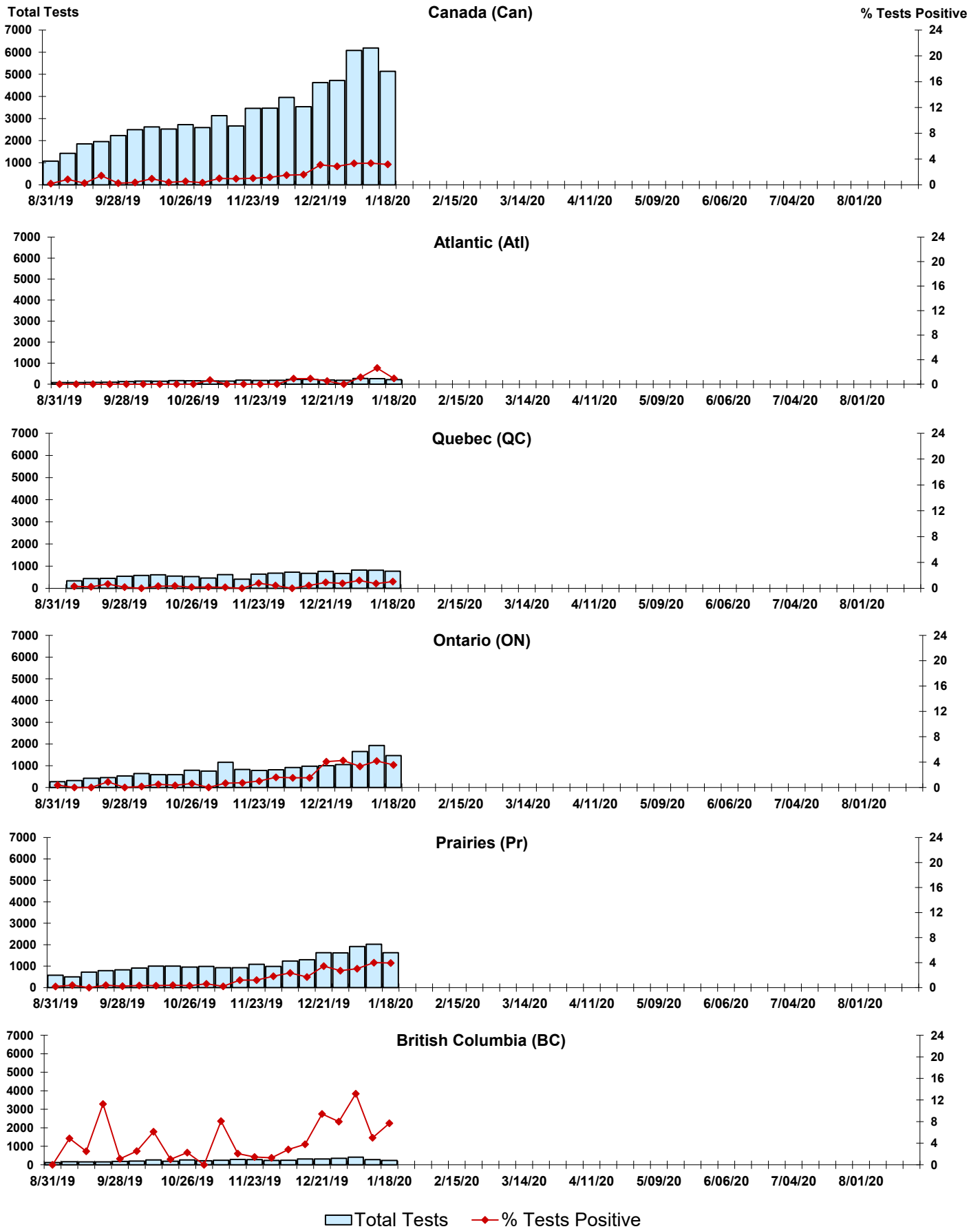




Figure 7: Positive Enterovirus/Rhinovirus (entero/rhino) Tests (%) in Canada by Region by Week of Report

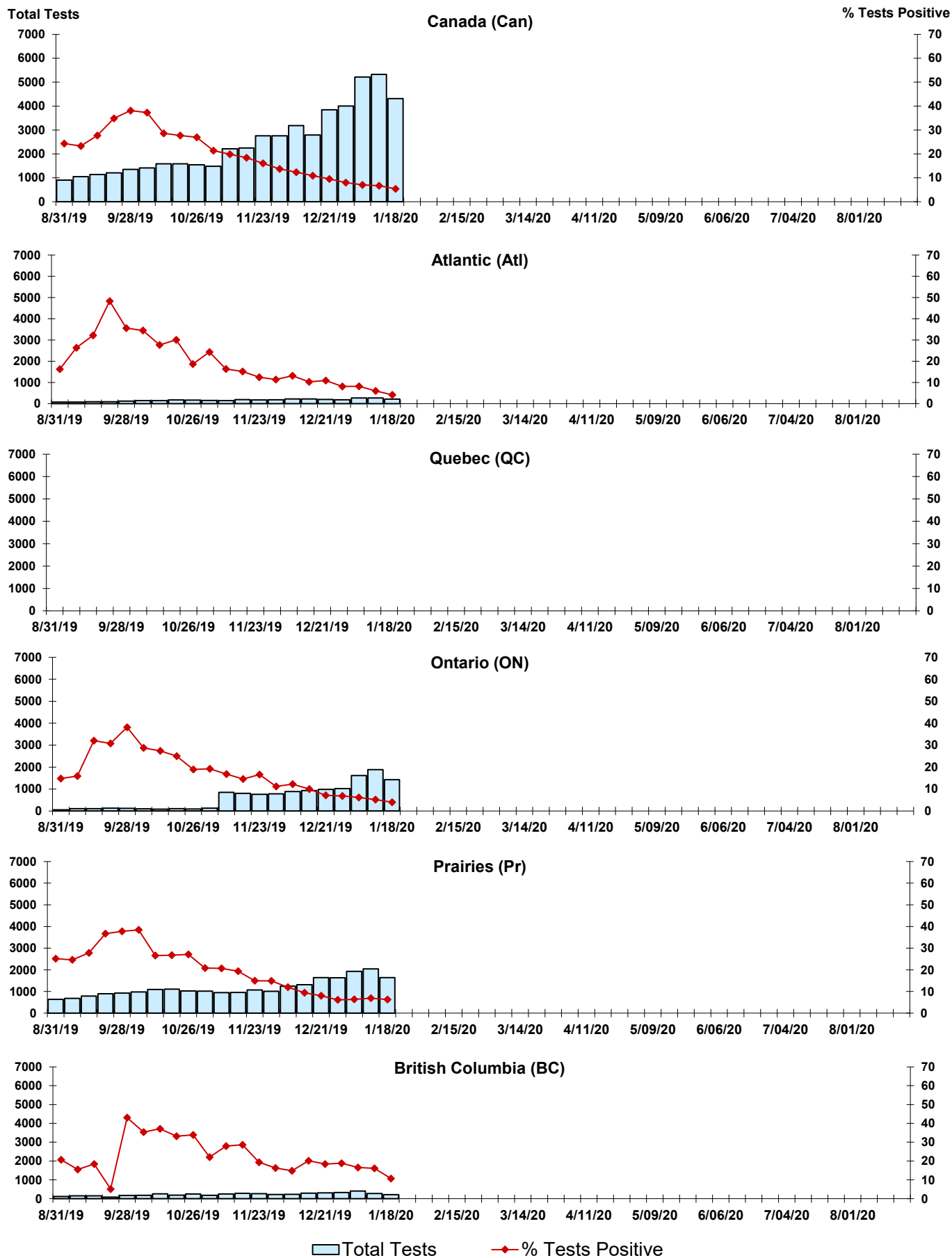
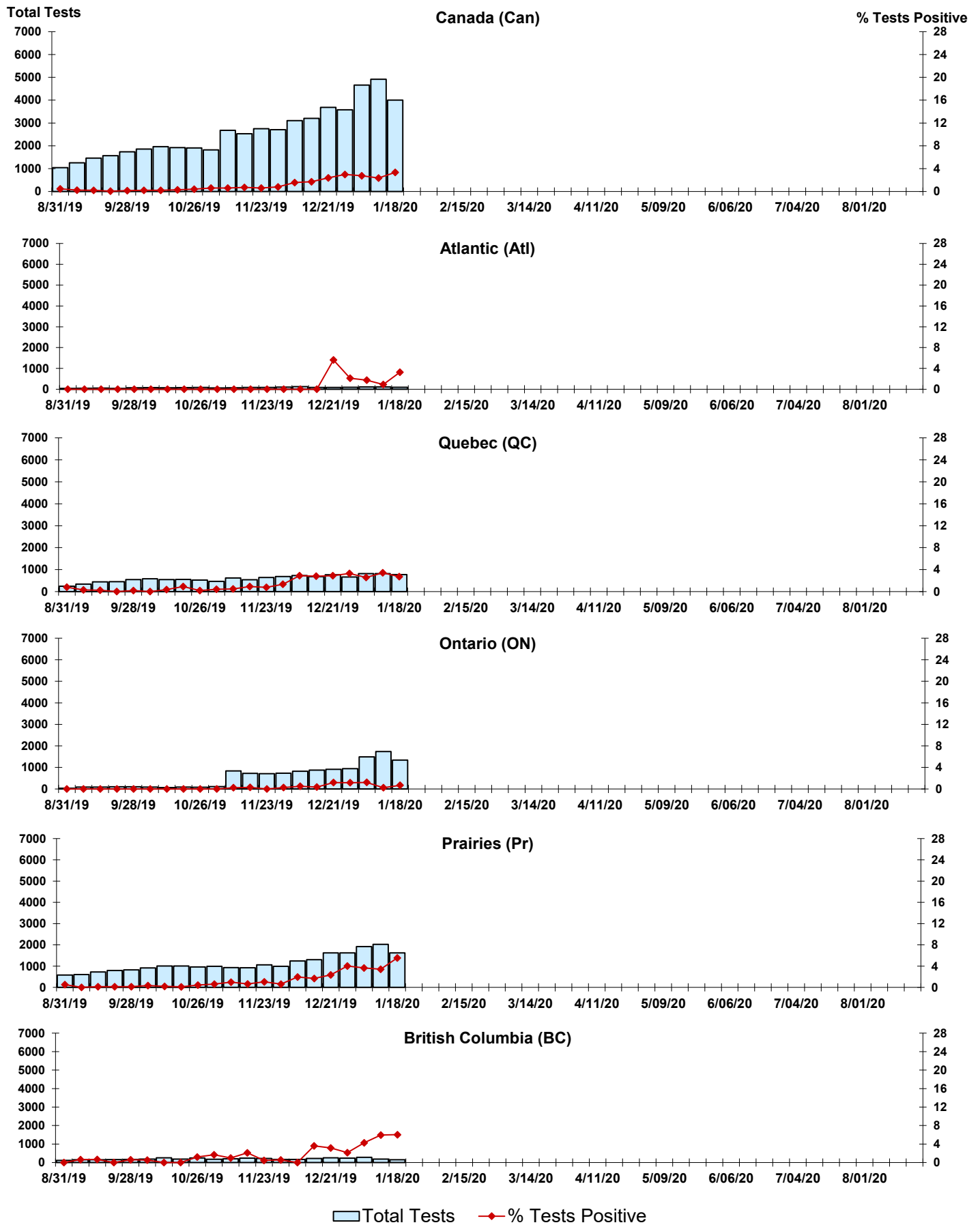


Figure 8: Positive Coronavirus (coron) Tests (%) in Canada by Region by Week of Report



## Abbreviations:

A(H1N1)pdm09: Influenza A(H1N1)pdm09

A(H3): Influenza A(H3N2)

A (UnS): Influenza A (Unsubtyped)

Adeno: Adenovirus

CHEO: Children's Hospital of Eastern Ontario

Coron: Coronavirus

Entero: Enterovirus

hMPV: human metapneumovirus

HSC: Health Sciences Centre

N.A.: Not Applicable

P.H.O.L.: Public Health Ontario Laboratory

PIV: Parainfluenza

Rhino: Rhinovirus

RSV: Respiratory syncytial virus

UHN: University Health Network

## Notes:

Specimens from Yukon (YT), Northwest Territories (NT) and Nunavut (NU) are sent to reference laboratories in other provinces. Results reported for the Territories reflect the number of specimens that are identified as originating from YT, NT or NU.

Delays in the reporting of data may cause data to change retrospectively.

Due to reporting delays, the sum of weekly report totals do not add up to cumulative totals.