

Respiratory Virus Report, Week 30 - ending July 25, 2020

The Respiratory Virus Detection Surveillance System collects data from select laboratories across Canada on the number of tests performed and the number of tests positive for influenza and other respiratory viruses. Data are reported on a weekly basis year-round to the Centre for Immunization and Respiratory Infectious Diseases (CIRID), Public Health Agency of Canada. These data are also summarized in the weekly FluWatch report.

In this Respiratory Virus Report, the number of detections of coronavirus reflects only seasonal human coronaviruses, not the novel pandemic coronavirus (SARS-CoV2) that causes COVID-19. For information on COVID-19, see the [Coronavirus disease \(COVID-19\): Outbreak](#)

Table 1: Respiratory Virus Detections/Isolations for the week ending July 25, 2020 (Reporting Week 202030)

| Reporting Laboratory | Flu Tested | A(H1N1)pdm09 Positive | A(H3) Positive | A(UnS) Positive | Total Flu A Positive | Total Flu B Positive | RSV Tested | RSV Positive | PIV Tested | PIV 1 Positive | PIV 2 Positive | PIV 3 Positive | PIV 4 Positive | Other PIV Positive | Adeno Tested | Adeno Positive | hMPV Tested | hMPV Positive | Entero/Rhino Tested | Entero/Rhino Positive | Coron Tested | Coron Positive |
|----------------------------------|-------------|-----------------------|----------------|-----------------|----------------------|----------------------|-------------|--------------|-------------|----------------|----------------|----------------|----------------|--------------------|--------------|----------------|-------------|---------------|---------------------|-----------------------|--------------|----------------|
| Newfoundland | 222 | 0 | 0 | 0 | 0 | 0 | 222 | 0 | 222 | 0 | 0 | 0 | 0 | 0 | 222 | 0 | 222 | 0 | 222 | 0 | N.A. | N.A. |
| Prince Edward Island | 1 | 0 | 0 | 0 | 0 | 0 | 1 | 0 | 1 | 0 | 0 | 0 | 0 | 0 | 1 | 0 | 1 | 0 | 1 | 0 | 1 | 0 |
| Nova Scotia | 5 | 0 | 0 | 0 | 0 | 0 | 6 | 0 | 5 | 0 | 0 | 0 | 0 | 0 | 5 | 0 | 5 | 0 | 5 | 0 | 5 | 0 |
| New Brunswick | 34 | 0 | 0 | 0 | 0 | 0 | 34 | 0 | 19 | 0 | 0 | 0 | 0 | 0 | 19 | 0 | 19 | 0 | 19 | 0 | 0 | 0 |
| Atlantic | 262 | 0 | 0 | 0 | 0 | 0 | 263 | 0 | 247 | 0 | 0 | 0 | 0 | 0 | 247 | 0 | 247 | 0 | 247 | 0 | 6 | 0 |
| Région Nord-Est | 3 | 0 | 0 | 0 | 0 | 0 | 4 | 0 | 0 | 0 | 0 | 0 | 0 | 0 | 0 | 0 | 0 | 0 | N.A. | N.A. | 0 | 0 |
| Québec-Chaudière-Appalaches | 11 | 0 | 0 | 0 | 0 | 0 | 11 | 0 | 8 | 0 | 0 | 0 | 0 | 0 | 8 | 0 | 8 | 0 | N.A. | N.A. | 8 | 0 |
| Centre-du-Québec | 8 | 0 | 0 | 0 | 0 | 0 | 3 | 0 | 2 | 0 | 0 | 0 | 0 | 0 | 2 | 0 | 2 | 0 | N.A. | N.A. | 2 | 0 |
| Montréal-Laval | 72 | 0 | 0 | 0 | 0 | 0 | 72 | 1 | 64 | 0 | 0 | 0 | 0 | 0 | 64 | 2 | 62 | 0 | N.A. | N.A. | 62 | 0 |
| Ouest du Québec | 1 | 0 | 0 | 0 | 0 | 0 | 1 | 0 | 0 | 0 | 0 | 0 | 0 | 0 | 0 | 0 | 0 | 0 | N.A. | N.A. | 0 | 0 |
| Montérégie | 0 | 0 | 0 | 0 | 0 | 0 | 0 | 0 | 0 | 0 | 0 | 0 | 0 | 0 | 0 | 0 | 0 | 0 | N.A. | N.A. | 0 | 0 |
| Province of Québec | 95 | 0 | 0 | 0 | 0 | 0 | 91 | 1 | 74 | 0 | 0 | 0 | 0 | 0 | 74 | 2 | 72 | 0 | N.A. | N.A. | 72 | 0 |
| P.H.O.L. - Ottawa | 10 | 0 | 0 | 0 | 0 | 0 | 10 | 0 | 10 | 0 | 0 | 0 | 0 | 0 | 10 | 0 | 10 | 0 | 10 | 0 | 10 | 0 |
| CHEO - Ottawa | 64 | 0 | 0 | 0 | 0 | 2 | 64 | 0 | 16 | 0 | 0 | 0 | 0 | 0 | 16 | 0 | 16 | 0 | 16 | 4 | 16 | 0 |
| P.H.O.L. - Kingston | 5 | 0 | 0 | 0 | 0 | 0 | 5 | 0 | 5 | 0 | 0 | 0 | 0 | 0 | 5 | 0 | 5 | 0 | 5 | 0 | 5 | 0 |
| UHN / Mount Sinai Hospital | 0 | 0 | 0 | 0 | 0 | 0 | 0 | 0 | 0 | 0 | 0 | 0 | 0 | 0 | 0 | 0 | 0 | 0 | 0 | 0 | N.A. | N.A. |
| P.H.O.L. - Toronto | 77 | 0 | 0 | 0 | 0 | 0 | 77 | 0 | 77 | 0 | 0 | 0 | 0 | 0 | 77 | 0 | 77 | 0 | 77 | 0 | 77 | 0 |
| Sick Kids Hospital - Toronto | 0 | 0 | 0 | 0 | 0 | 0 | 0 | 0 | 0 | 0 | 0 | 0 | 0 | 0 | 0 | 0 | 0 | 0 | 0 | 0 | 0 | 0 |
| Sunnybrook & Women's College HSC | 0 | 0 | 0 | 0 | 0 | 0 | 0 | 0 | 0 | 0 | 0 | 0 | 0 | 0 | 0 | 0 | 0 | 0 | 0 | 0 | 0 | 0 |
| P.H.O.L. - Sault Ste. Marie | 3 | 0 | 0 | 0 | 0 | 0 | 2 | 0 | 2 | 0 | 0 | 0 | 0 | 0 | 2 | 0 | 2 | 0 | 2 | 0 | 2 | 0 |
| P.H.O.L. - Timmins | 0 | 0 | 0 | 0 | 0 | 0 | 0 | 0 | 0 | 0 | 0 | 0 | 0 | 0 | 0 | 0 | 0 | 0 | 0 | 0 | 0 | 0 |
| St. Joseph's - London | 14 | 0 | 0 | 0 | 0 | 0 | 14 | 0 | 14 | 0 | 0 | 0 | 0 | 0 | 14 | 0 | 14 | 0 | 13 | 0 | 13 | 0 |
| P.H.O.L. - London | 19 | 0 | 0 | 0 | 0 | 0 | 19 | 0 | 19 | 0 | 0 | 0 | 0 | 0 | 19 | 0 | 19 | 0 | 19 | 0 | 19 | 0 |
| P.H.O.L. - Orillia | 10 | 0 | 0 | 0 | 0 | 0 | 10 | 0 | 10 | 0 | 0 | 0 | 0 | 0 | 10 | 0 | 10 | 0 | 10 | 0 | 10 | 0 |
| P.H.O.L. - Thunder Bay | 4 | 0 | 0 | 0 | 0 | 0 | 4 | 0 | 4 | 0 | 0 | 0 | 0 | 0 | 4 | 0 | 4 | 0 | 4 | 0 | 4 | 0 |
| P.H.O.L. - Sudbury | 4 | 0 | 0 | 0 | 0 | 0 | 4 | 0 | 4 | 0 | 0 | 0 | 0 | 0 | 4 | 0 | 4 | 0 | 4 | 0 | 4 | 0 |
| P.H.O.L. - Hamilton | 12 | 0 | 0 | 0 | 0 | 0 | 11 | 0 | 11 | 0 | 0 | 0 | 0 | 0 | 11 | 0 | 11 | 0 | 11 | 0 | 11 | 0 |
| P.H.O.L. - Peterborough | 9 | 0 | 0 | 0 | 0 | 0 | 9 | 0 | 9 | 0 | 0 | 0 | 0 | 0 | 9 | 0 | 8 | 0 | 9 | 0 | 8 | 0 |
| St. Joseph's - Hamilton | 243 | 0 | 0 | 0 | 0 | 0 | 243 | 0 | 243 | 0 | 0 | 0 | 0 | 0 | 243 | 0 | 243 | 0 | 243 | 0 | 243 | 0 |
| Province of Ontario | 474 | 0 | 0 | 0 | 0 | 2 | 472 | 0 | 424 | 0 | 0 | 0 | 0 | 0 | 424 | 0 | 423 | 0 | 423 | 4 | 179 | 0 |
| Province of Manitoba | 416 | 0 | 0 | 0 | 0 | 0 | 416 | 0 | 66 | 0 | 0 | 0 | 0 | 0 | 66 | 0 | 54 | 0 | 66 | 11 | 54 | 0 |
| Regina | 31 | 0 | 0 | 0 | 0 | 0 | 31 | 0 | 27 | 0 | 0 | 0 | 1 | 0 | 27 | 0 | 27 | 0 | 27 | 0 | 27 | 0 |
| Saskatoon | 0 | 0 | 0 | 0 | 0 | 0 | 0 | 0 | 0 | 0 | 0 | 0 | 0 | 0 | 0 | 0 | 0 | 0 | 0 | 0 | 0 | 0 |
| Province of Saskatchewan | 31 | 0 | 0 | 0 | 0 | 0 | 31 | 0 | 27 | 0 | 0 | 0 | 1 | 0 | 27 | 0 | 27 | 0 | 27 | 0 | 27 | 0 |
| Province of Alberta | 2512 | 0 | 0 | 0 | 0 | 0 | 2512 | 0 | 2512 | 0 | 0 | 0 | 0 | 0 | 2512 | 4 | 2512 | 0 | 2512 | 116 | 2512 | 1 |
| Prairies | 2959 | 0 | 0 | 0 | 0 | 0 | 2959 | 0 | 2605 | 0 | 0 | 0 | 1 | 0 | 2605 | 4 | 2593 | 0 | 2605 | 127 | 2593 | 1 |
| British Columbia | 716 | 0 | 0 | 0 | 0 | 0 | 716 | 0 | 223 | 0 | 0 | 0 | 0 | 0 | 223 | 0 | 222 | 1 | 217 | 28 | 216 | 0 |
| Yukon | 515 | 0 | 0 | 0 | 0 | 0 | 515 | 0 | N.A. | N.A. | N.A. | N.A. | N.A. | N.A. | N.A. | N.A. | N.A. | N.A. | N.A. | N.A. | N.A. | N.A. |
| Northwest Territories | 10 | 0 | 0 | 0 | 0 | 0 | 10 | 0 | 10 | 0 | 0 | 0 | 0 | 0 | 10 | 0 | 10 | 0 | 10 | 2 | 10 | 0 |
| Nunavut | 77 | 0 | 0 | 0 | 0 | 0 | 77 | 0 | 77 | 0 | 0 | 0 | 0 | 0 | 77 | 0 | 77 | 0 | 77 | 13 | 3 | 0 |
| Territories | 602 | 0 | 0 | 0 | 0 | 0 | 602 | 0 | 87 | 0 | 0 | 0 | 0 | 0 | 87 | 0 | 87 | 0 | 87 | 15 | 13 | 0 |
| CANADA | 5108 | 0 | 0 | 0 | 0 | 2 | 5103 | 1 | 3660 | 0 | 0 | 0 | 1 | 0 | 3660 | 6 | 3644 | 1 | 3579 | 174 | 3079 | 1 |

Specimens from Yukon (YT), Northwest Territories (NT) and Nunavut (NU) are sent to reference laboratories in other provinces and reported results reflect specimens identified as originating from YT, NT or NU.

Results from British Columbia comprise of specimens from the following sites: BC Children's and Women's Hospital, Children's and Women's Hospital Laboratory, Fraser Health Medical Microbiology Laboratory, Island Health, Providence Health Care, Powell River Hospital, St. Paul's Hospital, Vancouver General Hospital, Victoria General Hospital, Victoria Coastal Health, BCCDC Public Health Laboratory, Interior Health Authority sites and Northern Health Authority sites.

Delays in the reporting of data may cause data to change retrospectively.

For BC, only data from subtyped influenza A specimens are included in the weekly number of influenza detections and so the sum of A(H1N1)pdm09, A(H3), and A(UnS) positive results may not equal the sum of total Flu A positive results.

Table 2: Respiratory Virus Detections/Isolations for the period August 31, 2019 - July 25, 2020 (Reporting Weeks 201935-202030)

| Reporting Laboratory | Flu Tested | A(H1N1)pdm09 Positive | A(H3) Positive | A(UnS) Positive | Total Flu A Positive | Total Flu B Positive | RSV Tested | RSV Positive | PIV Tested | PIV 1 Positive | PIV 2 Positive | PIV 3 Positive | PIV 4 Positive | Other PIV Positive | Adeno Tested | Adeno Positive | hMPV Tested | hMPV Positive | Entero/Rhino Tested | Entero/Rhino Positive | Coron Tested | Coron Positive |
|----------------------------------|---------------|-----------------------|----------------|-----------------|----------------------|----------------------|---------------|--------------|---------------|----------------|----------------|----------------|----------------|--------------------|---------------|----------------|---------------|---------------|---------------------|-----------------------|---------------|----------------|
| Newfoundland | 19568 | 8 | 33 | 167 | 208 | 513 | 19568 | 337 | 19568 | 149 | 2 | 13 | 0 | 0 | 19568 | 124 | 19568 | 190 | 19568 | 394 | N.A. | N.A. |
| Prince Edward Island | 1269 | 0 | 0 | 144 | 144 | 78 | 1269 | 146 | 49 | 1 | 0 | 0 | 1 | 0 | 49 | 0 | 47 | 0 | 49 | 16 | 49 | 2 |
| Nova Scotia | 6696 | 3 | 2 | 196 | 201 | 248 | 6800 | 625 | 666 | 13 | 1 | 3 | 5 | 0 | 700 | 12 | 700 | 11 | 700 | 77 | 713 | 14 |
| New Brunswick | 11925 | 61 | 29 | 957 | 1047 | 1292 | 11866 | 1077 | 2488 | 53 | 7 | 0 | 13 | 0 | 2488 | 63 | 2488 | 16 | 2488 | 290 | 6421 | 125 |
| Atlantic | 39458 | 72 | 64 | 1464 | 1600 | 2131 | 39503 | 2185 | 22771 | 216 | 10 | 16 | 19 | 0 | 22805 | 199 | 22803 | 217 | 22805 | 777 | 7183 | 141 |
| Région Nord-Est | 9285 | 0 | 0 | 1136 | 1136 | 1323 | 7957 | 645 | 0 | 0 | 0 | 0 | 0 | 0 | 0 | 0 | 0 | 0 | N.A. | N.A. | 0 | 0 |
| Québec-Chaudière-Appalaches | 14068 | 0 | 0 | 1900 | 1900 | 1829 | 13983 | 1318 | 2792 | 31 | 4 | 3 | 14 | 0 | 2839 | 80 | 2233 | 25 | N.A. | N.A. | 2173 | 35 |
| Centre-du-Québec | 19025 | 0 | 0 | 2909 | 2909 | 2395 | 15321 | 1385 | 62 | 0 | 0 | 1 | 0 | 0 | 62 | 0 | 62 | 0 | N.A. | N.A. | 62 | 1 |
| Montréal-Laval | 38567 | 0 | 0 | 4023 | 4023 | 2411 | 37413 | 2400 | 17272 | 146 | 5 | 35 | 13 | 0 | 17272 | 526 | 16806 | 270 | N.A. | N.A. | 17116 | 265 |
| Ouest du Québec | 12605 | 0 | 0 | 1745 | 1745 | 1278 | 11757 | 1089 | 0 | 0 | 0 | 0 | 0 | 0 | 0 | 0 | 0 | 0 | N.A. | N.A. | 0 | 0 |
| Montérégie | 8520 | 0 | 0 | 1133 | 1133 | 791 | 8292 | 610 | 0 | 0 | 0 | 0 | 0 | 0 | 0 | 0 | 0 | 0 | N.A. | N.A. | 0 | 0 |
| Province of Québec | 102070 | 0 | 0 | 12846 | 12846 | 10027 | 94723 | 7447 | 20126 | 177 | 9 | 39 | 27 | 0 | 20173 | 606 | 19101 | 295 | N.A. | N.A. | 19351 | 301 |
| P.H.O.L. - Ottawa | 1914 | 108 | 61 | 3 | 172 | 71 | 1905 | 86 | 1880 | 2 | 0 | 0 | 0 | 41 | 1880 | 18 | 1866 | 61 | 1724 | 78 | 1709 | 68 |
| CHEO - Ottawa | 10323 | 2 | 0 | 665 | 667 | 471 | 10323 | 692 | 1103 | 17 | 0 | 5 | 10 | 5 | 1103 | 20 | 1103 | 20 | 1106 | 176 | 1094 | 32 |
| P.H.O.L. - Kingston | 1613 | 62 | 27 | 4 | 93 | 23 | 1591 | 68 | 1587 | 1 | 0 | 0 | 0 | 33 | 1587 | 17 | 1578 | 60 | 1418 | 64 | 1405 | 64 |
| UHN / Mount Sinai Hospital | 12066 | 9 | 0 | 651 | 660 | 218 | 12066 | 348 | 672 | 7 | 2 | 10 | 2 | 0 | 0 | 0 | 766 | 16 | 0 | 0 | N.A. | N.A. |
| P.H.O.L. - Toronto | 18741 | 1349 | 144 | 36 | 1529 | 355 | 18277 | 416 | 18198 | 34 | 0 | 3 | 0 | 240 | 18198 | 158 | 17978 | 440 | 15654 | 811 | 15414 | 739 |
| Sick Kids Hospital - Toronto | 2407 | 104 | 13 | 99 | 216 | 168 | 1936 | 208 | 1936 | 26 | 5 | 8 | 27 | 0 | 1936 | 53 | 1936 | 48 | 1936 | 366 | 1936 | 92 |
| Sunnybrook & Women's College HSC | 3456 | 0 | 0 | 124 | 124 | 25 | 3456 | 64 | 3456 | 9 | 0 | 17 | 0 | 0 | 3197 | 11 | 3316 | 35 | 3316 | 66 | 120 | 0 |
| P.H.O.L. - Sault Ste. Marie | 624 | 20 | 0 | 0 | 20 | 8 | 599 | 28 | 600 | 1 | 0 | 0 | 0 | 25 | 600 | 5 | 597 | 33 | 549 | 14 | 546 | 13 |
| P.H.O.L. - Timmins | 695 | 65 | 3 | 2 | 70 | 12 | 663 | 32 | 666 | 0 | 0 | 0 | 0 | 18 | 666 | 1 | 663 | 30 | 638 | 5 | 633 | 19 |
| St. Joseph's - London | 4752 | 0 | 0 | 238 | 238 | 114 | 4750 | 334 | 1716 | 19 | 4 | 3 | 14 | 0 | 1716 | 24 | 1716 | 33 | 938 | 112 | 863 | 22 |
| P.H.O.L. - London | 5456 | 309 | 112 | 9 | 430 | 145 | 5421 | 250 | 5407 | 8 | 0 | 0 | 0 | 90 | 5409 | 49 | 5365 | 180 | 4951 | 296 | 4897 | 259 |
| P.H.O.L. - Orillia | 1710 | 81 | 31 | 3 | 115 | 33 | 1707 | 89 | 1704 | 4 | 0 | 0 | 0 | 33 | 1704 | 8 | 1699 | 50 | 1513 | 81 | 1506 | 90 |
| P.H.O.L. - Thunder Bay | 1485 | 82 | 17 | 9 | 108 | 45 | 1483 | 64 | 1483 | 0 | 0 | 1 | 0 | 41 | 1483 | 21 | 1472 | 52 | 1435 | 110 | 1423 | 44 |
| P.H.O.L. - Sudbury | 939 | 29 | 14 | 4 | 47 | 15 | 933 | 45 | 934 | 0 | 0 | 1 | 0 | 21 | 934 | 9 | 924 | 14 | 862 | 28 | 851 | 34 |
| P.H.O.L. - Hamilton | 5224 | 286 | 39 | 12 | 337 | 117 | 5074 | 164 | 5055 | 10 | 1 | 0 | 0 | 120 | 5055 | 69 | 5034 | 139 | 4460 | 339 | 4435 | 256 |
| P.H.O.L. - Peterborough | 1287 | 66 | 4 | 1 | 71 | 10 | 1278 | 33 | 1277 | 3 | 0 | 0 | 0 | 40 | 1276 | 10 | 1271 | 47 | 1022 | 77 | 1014 | 49 |
| St. Joseph's - Hamilton | 33042 | 0 | 0 | 1617 | 1617 | 806 | 33042 | 1275 | 33042 | 119 | 6 | 26 | 0 | 0 | 33042 | 274 | 33042 | 461 | 33042 | 1294 | 0 | 0 |
| Province of Ontario | 105734 | 2572 | 465 | 3477 | 6514 | 2636 | 104504 | 4196 | 80716 | 260 | 18 | 74 | 53 | 707 | 79786 | 747 | 80326 | 1719 | 74564 | 3917 | 37846 | 1781 |
| Manitoba | 24189 | 174 | 134 | 1340 | 1648 | 889 | 23851 | 1009 | 4456 | 48 | 9 | 4 | 8 | 0 | 4456 | 61 | 3289 | 59 | 4456 | 519 | 2856 | 79 |
| Regina | 14132 | 43 | 26 | 1195 | 1264 | 665 | 14141 | 1043 | 6295 | 149 | 16 | 6 | 32 | 0 | 6295 | 101 | 6218 | 205 | 6295 | 895 | 6295 | 151 |
| Saskatoon | 4455 | 0 | 0 | 318 | 318 | 235 | 4455 | 182 | 4519 | 98 | 12 | 6 | 7 | 0 | 4519 | 66 | 4522 | 27 | 4519 | 530 | 4519 | 45 |
| Province of Saskatchewan | 18587 | 43 | 26 | 1513 | 1582 | 900 | 18596 | 1225 | 10814 | 247 | 28 | 12 | 39 | 0 | 10814 | 167 | 10740 | 232 | 10814 | 1425 | 10814 | 196 |
| Province of Alberta | 111129 | 1741 | 1287 | 1346 | 4374 | 3417 | 103675 | 0 | 103675 | 496 | 106 | 99 | 271 | 0 | 103675 | 918 | 103675 | 1631 | 103675 | 6481 | 103675 | 1746 |
| Prairies | 153905 | 1958 | 1447 | 4199 | 7604 | 5206 | 146122 | 2234 | 118945 | 791 | 143 | 115 | 318 | 0 | 118945 | 1146 | 117704 | 1922 | 118945 | 8425 | 117345 | 2021 |
| British Columbia | 90627 | 277 | 244 | 1852 | 4091 | 2575 | 90267 | 2771 | 26962 | 185 | 60 | 38 | 52 | 86 | 27088 | 169 | 26901 | 692 | 26199 | 1849 | 9565 | 316 |
| Yukon | 9166 | 4 | 8 | 55 | 73 | 45 | 9166 | 23 | N.A. | N.A. | N.A. | N.A. | N.A. | N.A. | N.A. | N.A. | N.A. | N.A. | N.A. | N.A. | N.A. | N.A. |
| Northwest Territories | 1615 | 90 | 19 | 1 | 110 | 191 | 1604 | 0 | 1604 | 14 | 2 | 13 | 13 | 0 | 1604 | 22 | 1604 | 90 | 1604 | 199 | 1604 | 77 |
| Nunavut | 1603 | 5 | 14 | 42 | 61 | 73 | 1600 | 53 | 1600 | 36 | 4 | 1 | 6 | 0 | 1600 | 34 | 1600 | 78 | 1600 | 251 | 335 | 41 |
| Territories | 12384 | 99 | 41 | 98 | 244 | 309 | 12370 | 76 | 3204 | 50 | 6 | 14 | 19 | 0 | 3204 | 56 | 3204 | 168 | 3204 | 450 | 1939 | 118 |
| CANADA | 504178 | 4978 | 2261 | 23936 | 32899 | 22884 | 487489 | 18909 | 272724 | 1679 | 246 | 296 | 488 | 793 | 272001 | 2923 | 270039 | 5013 | 245717 | 15418 | 193229 | 4678 |

Specimens from YT, NT and NU are sent to reference laboratories in other provinces and reported results reflect specimens identified as originating from YT, NT or NU.

Results from British Columbia comprise of specimens from the following sites: BC Children's and Women's Hospital, Children's and Women's Hospital Laboratory, Fraser Health Medical Microbiology Laboratory, Island Health, Providence Health Care, Powell River Hospital, St. Paul's Hospital, Vancouver General Hospital, Victoria General Hospital, Victoria Coastal Health, BCCDC P

Delays in the reporting of data may cause data to change retrospectively. Due to reporting delays, the sum of weekly report totals do not add up to cumulative totals.

For BC, only data from subtyped influenza A specimens are included in the weekly number of influenza detections and so the sum of A(H1N1)pdm09, A(H3), and A(UnS) positive results may not equal the sum of total Flu A positive results.

Figure 1: Number positive laboratory tests for other respiratory viruses by report week, Canada, 2019-20

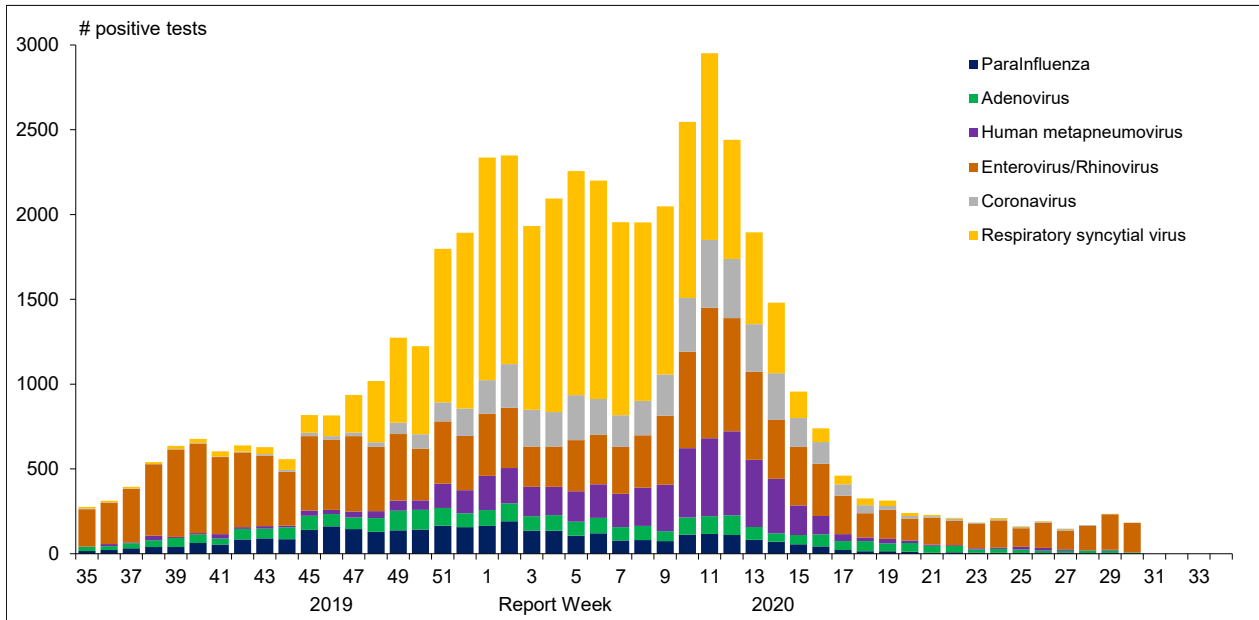


Figure 2 : Positive Influenza Tests (%) in Canada by Region by Week of Report

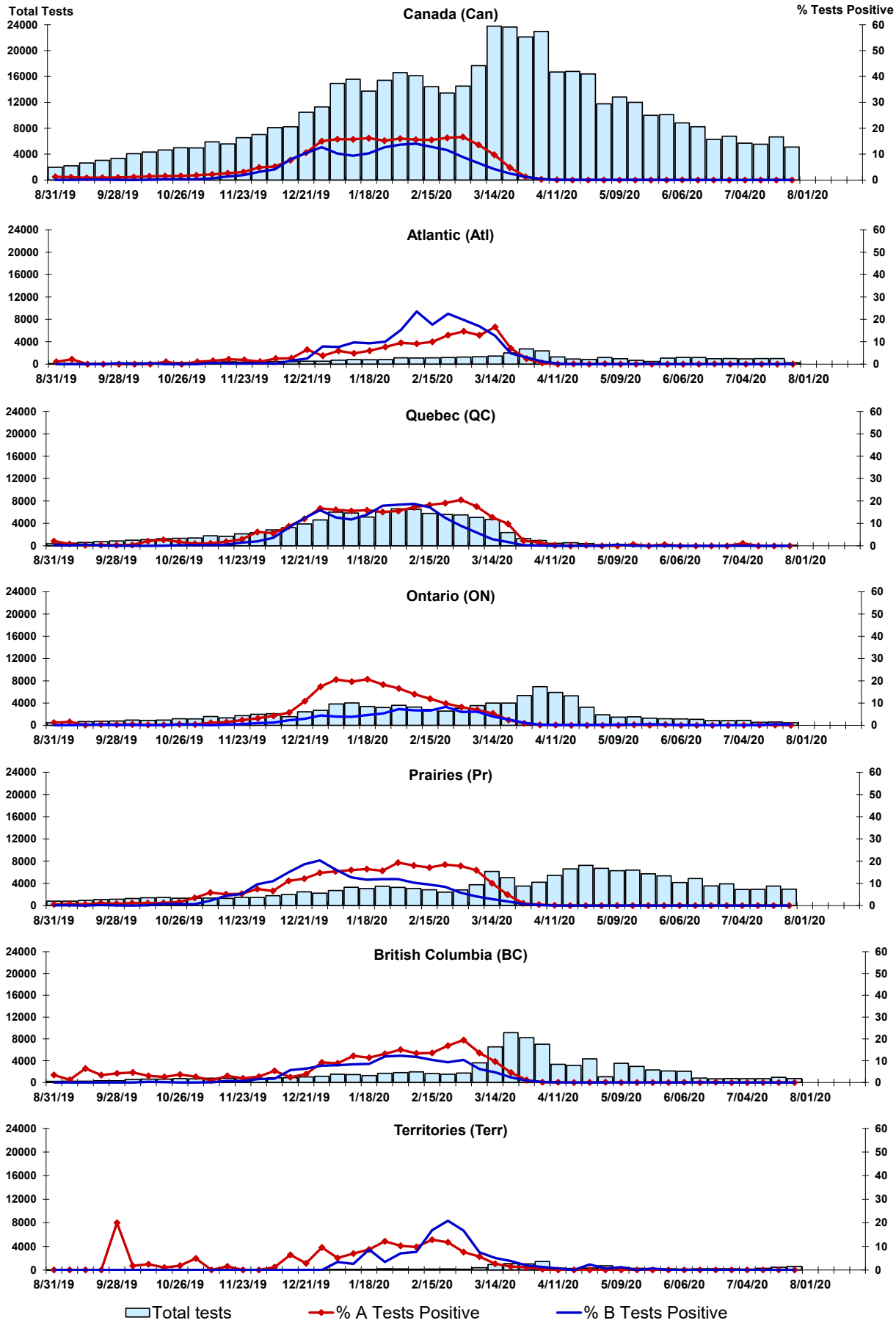


Figure 3: Positive Respiratory syncytial virus (RSV) Tests (%) in Canada by Region by Week of Report

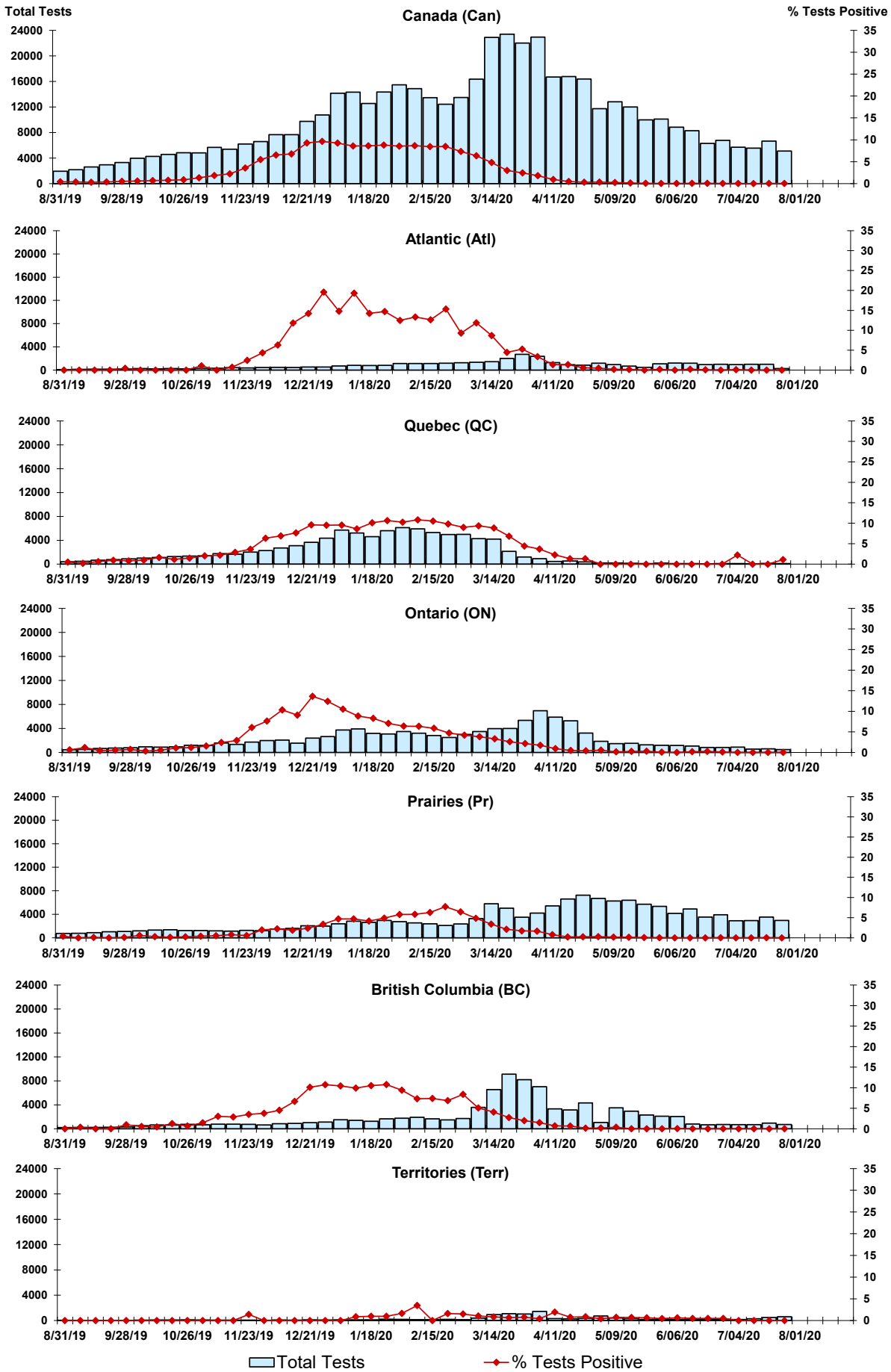


Figure 4: Positive Parainfluenza (PIV) Tests (%) in Canada by Region by Week of Report

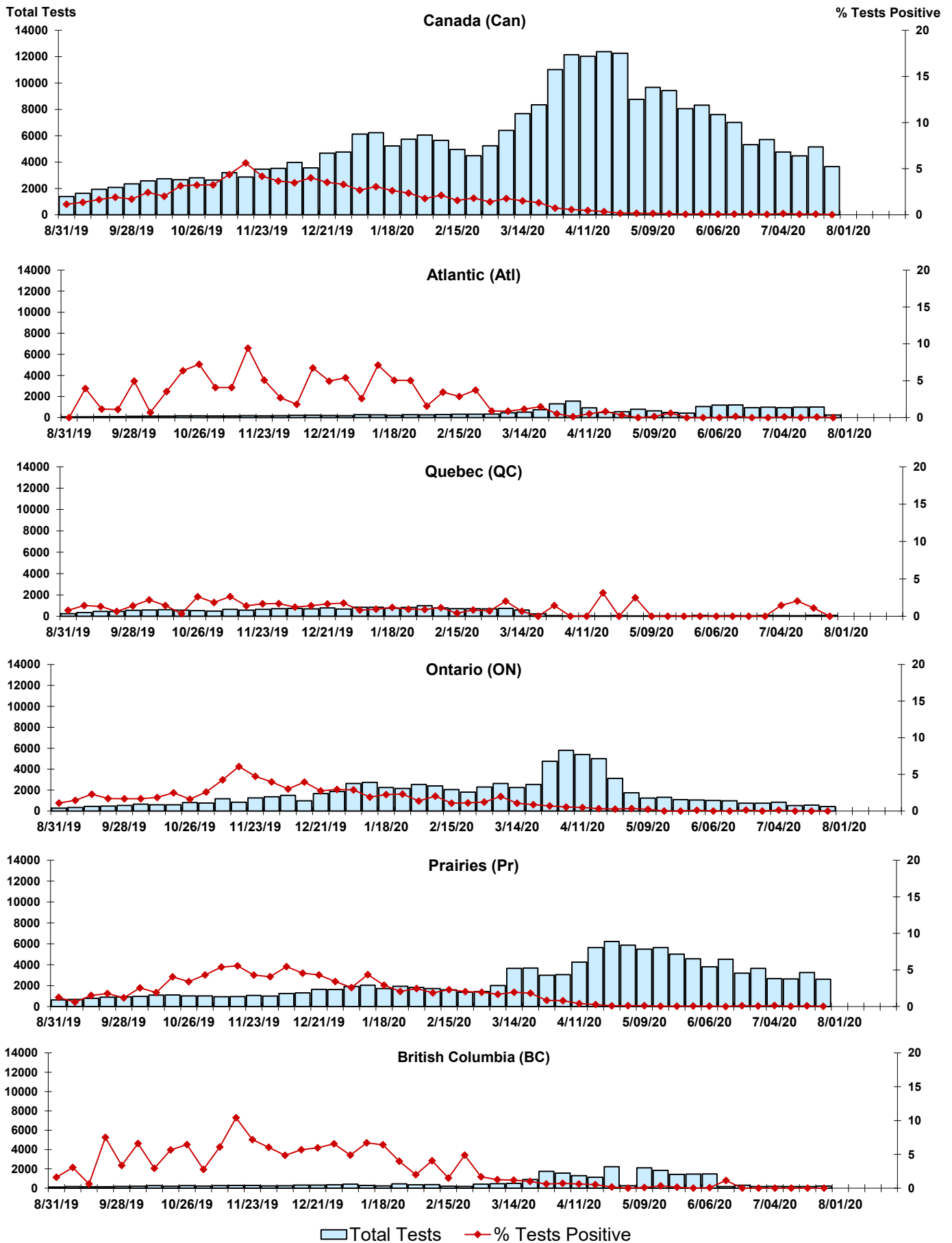


Figure 5: Positive Adenovirus (adeno) Tests (%) in Canada by Region by Week of Report

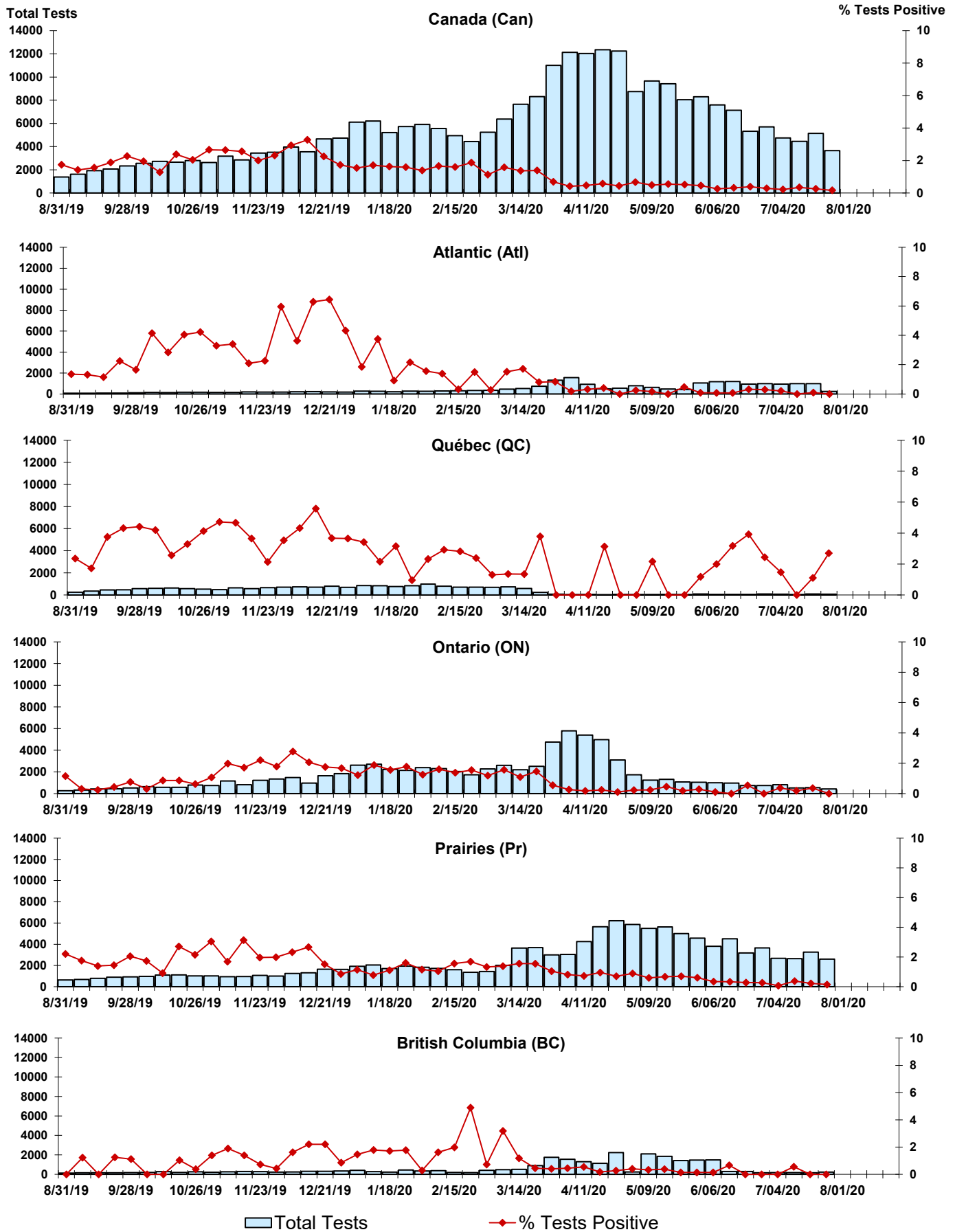


Figure 6: Positive human metapneumovirus (hMPV) Tests (%) in Canada by Region by Week of Report

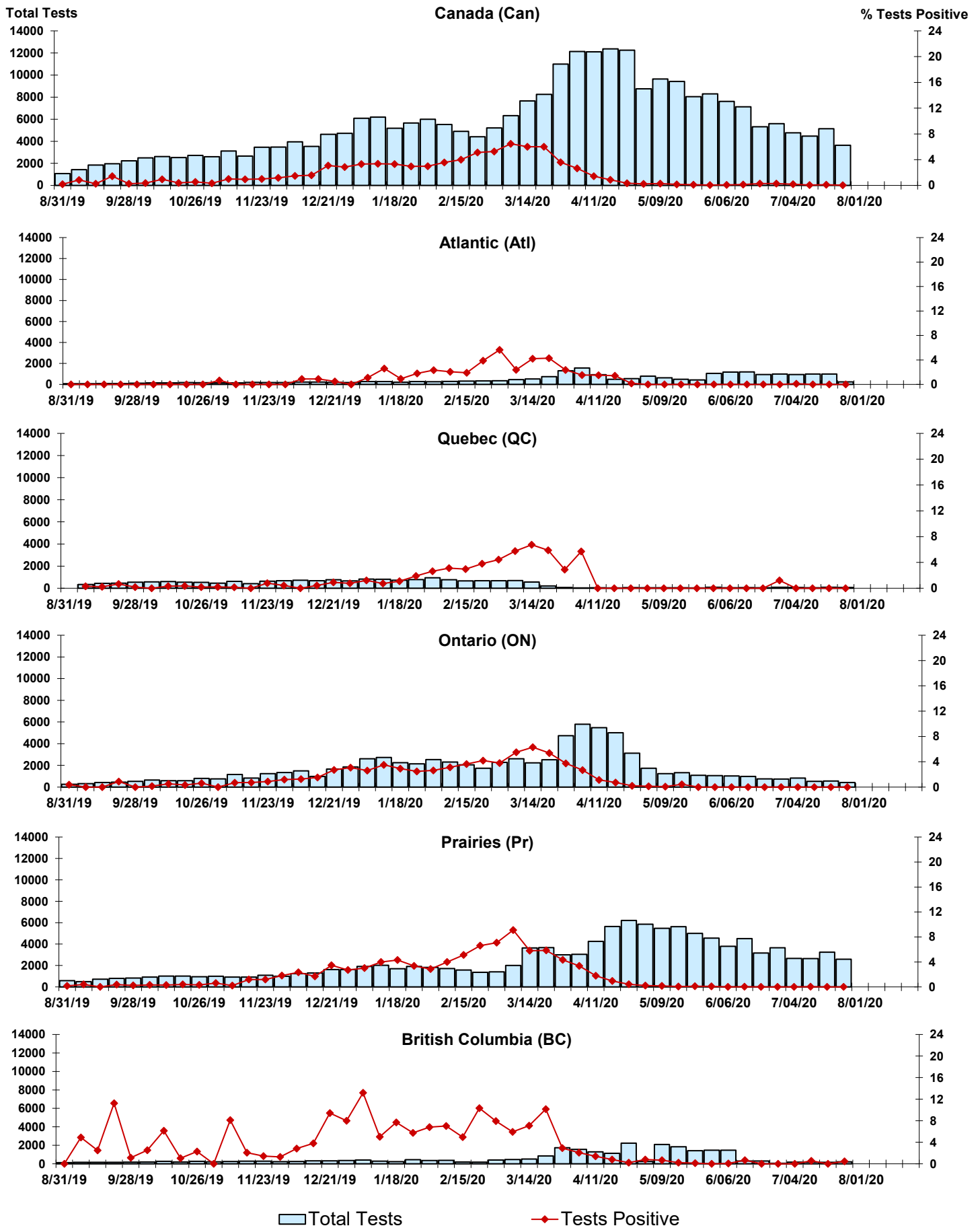


Figure 7: Positive Enterovirus/Rhinovirus (entero/rhino) Tests (%) in Canada by Region by Week of Report

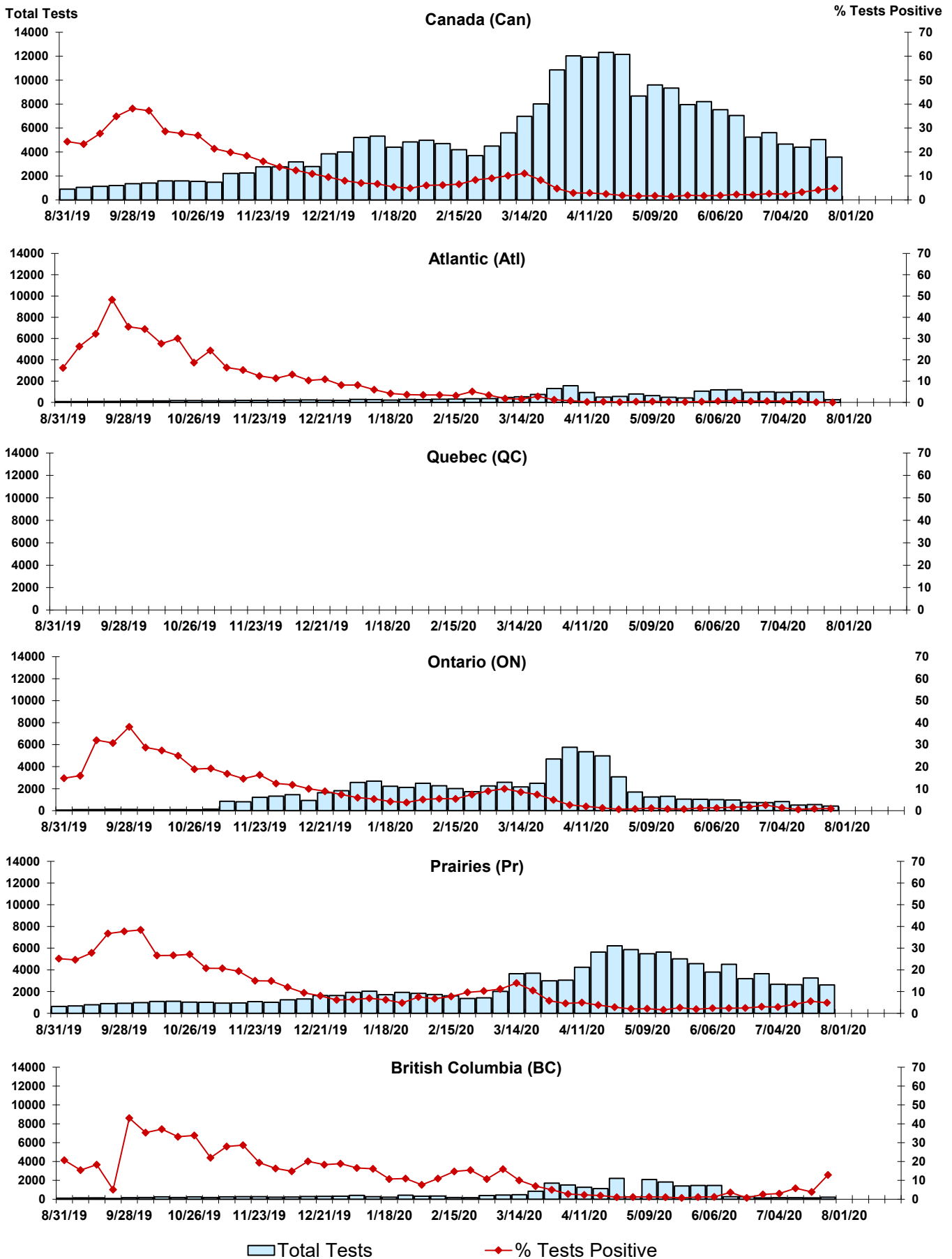
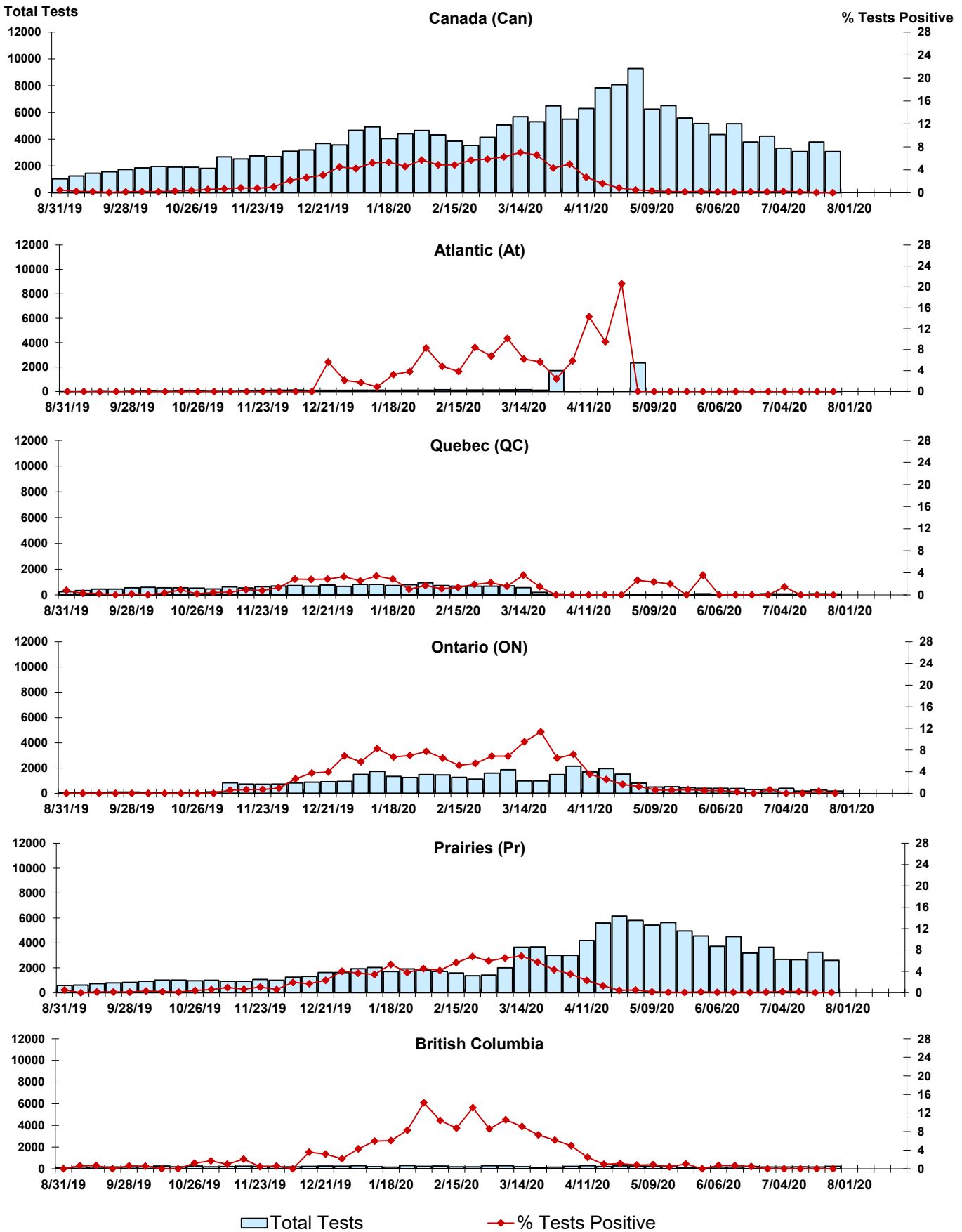


Figure 8: Positive Coronavirus (coron) Tests (%) in Canada by Region by Week of Report



Abbreviations:

A(H1N1)pdm09: Influenza A(H1N1)pdm09

A(H3): Influenza A(H3N2)

A (UnS): Influenza A (Unsubtyped)

Adeno: Adenovirus

CHEO: Children's Hospital of Eastern Ontario

Coron: Coronavirus

Entero: Enterovirus

hMPV: human metapneumovirus

HSC: Health Sciences Centre

N.A.: Not Applicable

P.H.L.: Public Health Laboratory

P.H.O.L.: Public Health Ontario Laboratory

PIV: Parainfluenza

Rhino: Rhinovirus

RSV: Respiratory syncytial virus

UHN: University Health Network

Notes:

Specimens from Yukon (YT), Northwest Territories (NT) and Nunavut (NU) are sent to reference laboratories in other provinces. Results reported for the Territories reflect the number of specimens that are identified as originating from YT, NT or NU.

Delays in the reporting of data may cause data to change retrospectively.

Due to reporting delays, the sum of weekly report totals do not add up to cumulative totals.

