

# Respiratory Virus Report, Week 31 - ending August 1, 2020

The Respiratory Virus Detection Surveillance System collects data from select laboratories across Canada on the number of tests performed and the number of tests positive for influenza and other respiratory viruses. Data are reported on a weekly basis year-round to the Centre for Immunization and Respiratory Infectious Diseases (CIRID), Public Health Agency of Canada. These data are also summarized in the weekly FluWatch report.

In this Respiratory Virus Report, the number of detections of coronavirus reflects only seasonal human coronaviruses, not the novel pandemic coronavirus (SARS-CoV2) that causes COVID-19. For information on COVID-19, see the [Coronavirus disease \(COVID-19\): Outbreak](#)

**Table 1: Respiratory Virus Detections/Isolations for the week ending August 1, 2020 (Reporting Week 202031)**

Reporting Laboratory	Flu Tested	A(H1N1)pdm09 Positive	A(H3) Positive	A(UnS) Positive	Total Flu A Positive	Total Flu B Positive	RSV Tested	RSV Positive	PIV Tested	PIV 1 Positive	PIV 2 Positive	PIV 3 Positive	PIV 4 Positive	Other PIV Positive	Adeno Tested	Adeno Positive	hMPV Tested	hMPV Positive	Entero/Rhino Tested	Entero/Rhino Positive	Coron Tested	Coron Positive
Newfoundland	110	0	0	0	0	1	110	0	110	0	0	0	0	0	110	1	110	0	110	1	N.A.	N.A.
Prince Edward Island	0	0	0	0	0	0	0	0	0	0	0	0	0	0	0	0	0	0	0	0	0	0
Nova Scotia	8	0	0	0	0	0	8	0	8	0	0	0	0	0	8	0	8	0	8	0	8	0
New Brunswick	26	0	0	0	0	0	26	0	20	0	0	0	0	0	20	0	20	0	20	2	20	0
<b>Atlantic</b>	<b>144</b>	<b>0</b>	<b>0</b>	<b>0</b>	<b>0</b>	<b>1</b>	<b>144</b>	<b>0</b>	<b>138</b>	<b>0</b>	<b>0</b>	<b>0</b>	<b>0</b>	<b>0</b>	<b>138</b>	<b>1</b>	<b>138</b>	<b>0</b>	<b>138</b>	<b>3</b>	<b>28</b>	<b>0</b>
Région Nord-Est	1	0	0	0	0	0	1	0	0	0	0	0	0	0	0	0	0	0	N.A.	N.A.	0	0
Québec-Chaudière-Appalaches	18	0	0	0	0	0	20	0	15	0	0	0	0	0	15	0	15	0	N.A.	N.A.	15	0
Centre-du-Québec	13	0	0	0	0	0	12	0	5	0	0	0	0	0	5	0	5	0	N.A.	N.A.	5	0
Montréal-Laval	77	0	0	0	0	0	78	0	73	0	0	0	0	0	73	0	73	0	N.A.	N.A.	73	1
Ouest du Québec	2	0	0	0	0	0	2	0	0	0	0	0	0	0	0	0	0	0	N.A.	N.A.	0	0
Montérégie	0	0	0	0	0	0	0	0	0	0	0	0	0	0	0	0	0	0	N.A.	N.A.	0	0
<b>Province of Québec</b>	<b>111</b>	<b>0</b>	<b>0</b>	<b>0</b>	<b>0</b>	<b>0</b>	<b>113</b>	<b>0</b>	<b>93</b>	<b>0</b>	<b>0</b>	<b>0</b>	<b>0</b>	<b>0</b>	<b>93</b>	<b>0</b>	<b>93</b>	<b>0</b>	<b>N.A.</b>	<b>N.A.</b>	<b>93</b>	<b>1</b>
P.H.O.L. - Ottawa	10	0	0	0	0	0	10	0	10	0	0	0	0	0	10	0	10	0	10	0	10	0
CHEO - Ottawa	62	0	0	0	0	0	62	1	9	0	0	0	0	0	9	0	9	0	9	0	9	0
P.H.O.L. - Kingston	5	0	0	0	0	0	5	0	5	0	0	0	0	0	5	0	5	0	5	0	5	0
UHN / Mount Sinai Hospital	10	0	0	0	0	0	10	0	10	0	0	0	0	0	0	0	10	0	0	0	N.A.	N.A.
P.H.O.L. - Toronto	145	0	0	0	0	0	145	0	145	0	0	0	0	0	145	1	145	0	145	1	145	0
Sick Kids Hospital - Toronto	0	0	0	0	0	0	0	0	0	0	0	0	0	0	0	0	0	0	0	0	0	0
Sunnybrook & Women's College HSC	0	0	0	0	0	0	0	0	0	0	0	0	0	0	0	0	0	0	0	0	0	0
P.H.O.L. - Sault Ste. Marie	3	0	0	0	0	0	3	0	3	0	0	0	0	0	3	0	3	0	3	0	3	0
P.H.O.L. - Timmins	1	0	0	0	0	0	1	0	1	0	0	0	0	0	1	0	1	0	1	0	1	0
St. Joseph's - London	14	0	0	0	0	0	14	0	14	0	0	0	0	0	14	0	14	0	13	1	13	0
P.H.O.L. - London	12	0	0	0	0	0	12	0	12	0	0	0	0	0	12	0	12	0	12	0	12	0
P.H.O.L. - Orillia	1	0	0	0	0	0	1	0	1	0	0	0	0	0	1	0	1	0	1	0	1	0
P.H.O.L. - Thunder Bay	21	0	0	0	0	0	21	0	21	0	0	0	0	0	21	1	21	0	21	3	21	0
P.H.O.L. - Sudbury	4	0	0	0	0	0	4	0	4	0	0	0	0	0	4	0	4	0	4	0	4	0
P.H.O.L. - Hamilton	21	0	0	0	0	0	21	0	21	0	0	0	0	0	21	0	21	0	21	0	21	0
P.H.O.L. - Peterborough	5	0	0	0	0	0	5	0	5	0	0	0	0	0	5	0	5	0	5	0	5	0
St. Joseph's - Hamilton	0	0	0	0	0	0	0	0	0	0	0	0	0	0	0	0	0	0	0	0	0	0
<b>Province of Ontario</b>	<b>314</b>	<b>0</b>	<b>0</b>	<b>0</b>	<b>0</b>	<b>0</b>	<b>314</b>	<b>1</b>	<b>261</b>	<b>0</b>	<b>0</b>	<b>0</b>	<b>0</b>	<b>0</b>	<b>251</b>	<b>2</b>	<b>261</b>	<b>0</b>	<b>250</b>	<b>5</b>	<b>250</b>	<b>0</b>
Province of Manitoba	0	0	0	0	0	0	0	0	0	0	0	0	0	0	0	0	0	0	0	0	0	0
Regina	46	0	0	0	0	0	46	0	41	0	0	0	0	0	41	2	41	0	41	7	41	0
Saskatoon	0	0	0	0	0	0	0	0	0	0	0	0	0	0	0	0	0	0	0	0	0	0
Province of Saskatchewan	46	0	0	0	0	0	46	0	41	0	0	0	0	0	41	2	41	0	41	7	41	0
Province of Alberta	2858	0	0	0	0	0	2858	0	2858	0	4	0	0	0	2858	6	2858	0	2858	165	2858	0
<b>Prairies</b>	<b>2904</b>	<b>0</b>	<b>0</b>	<b>0</b>	<b>0</b>	<b>0</b>	<b>2904</b>	<b>0</b>	<b>2899</b>	<b>0</b>	<b>4</b>	<b>0</b>	<b>0</b>	<b>0</b>	<b>2899</b>	<b>8</b>	<b>2899</b>	<b>0</b>	<b>2899</b>	<b>172</b>	<b>2899</b>	<b>0</b>
<b>British Columbia</b>	<b>0</b>	<b>0</b>	<b>0</b>	<b>0</b>	<b>0</b>	<b>0</b>	<b>0</b>	<b>0</b>	<b>0</b>	<b>0</b>	<b>0</b>	<b>0</b>	<b>0</b>	<b>0</b>	<b>0</b>	<b>0</b>	<b>0</b>	<b>0</b>	<b>0</b>	<b>0</b>	<b>0</b>	<b>0</b>
Yukon	0	0	0	0	0	0	0	0	N.A.	N.A.	N.A.	N.A.	N.A.	N.A.	N.A.	N.A.	N.A.	N.A.	N.A.	N.A.	N.A.	N.A.
Northwest Territories	11	0	0	0	0	0	11	0	11	0	0	0	0	0	11	0	11	0	11	1	11	0
Nunavut	10	0	0	0	0	0	10	0	10	0	0	0	0	0	10	0	10	1	10	4	10	0
<b>Territories</b>	<b>21</b>	<b>0</b>	<b>0</b>	<b>0</b>	<b>0</b>	<b>0</b>	<b>21</b>	<b>0</b>	<b>21</b>	<b>0</b>	<b>0</b>	<b>0</b>	<b>0</b>	<b>0</b>	<b>21</b>	<b>0</b>	<b>21</b>	<b>1</b>	<b>21</b>	<b>5</b>	<b>21</b>	<b>0</b>
<b>CANADA</b>	<b>3494</b>	<b>0</b>	<b>0</b>	<b>0</b>	<b>0</b>	<b>1</b>	<b>3496</b>	<b>1</b>	<b>3412</b>	<b>0</b>	<b>4</b>	<b>0</b>	<b>0</b>	<b>0</b>	<b>3402</b>	<b>11</b>	<b>3412</b>	<b>1</b>	<b>3308</b>	<b>185</b>	<b>3291</b>	<b>1</b>

Specimens from Yukon (YT), Northwest Territories (NT) and Nunavut (NU) are sent to reference laboratories in other provinces and reported results reflect specimens identified as originating from YT, NT or NU.

Results from British Columbia comprise of specimens from the following sites: BC Children's and Women's Hospital, Children's and Women's Hospital Laboratory, Fraser Health Medical Microbiology Laboratory, Island Health, Providence Health Care, Powell River Hospital, St. Paul's Hospital, Vancouver General Hospital, Victoria General Hospital, Victoria Coastal Health, BCCDC Public Health Laboratory, Interior Health Authority sites and Northern Health Authority sites.

Delays in the reporting of data may cause data to change retrospectively.

For BC, only data from subtyped influenza A specimens are included in the weekly number of influenza detections and so the sum of A(H1N1)pdm09, A(H3), and A(UnS) positive results may not equal the sum of total Flu A positive results.



Figure 1: Number positive laboratory tests for other respiratory viruses by report week, Canada, 2019-20

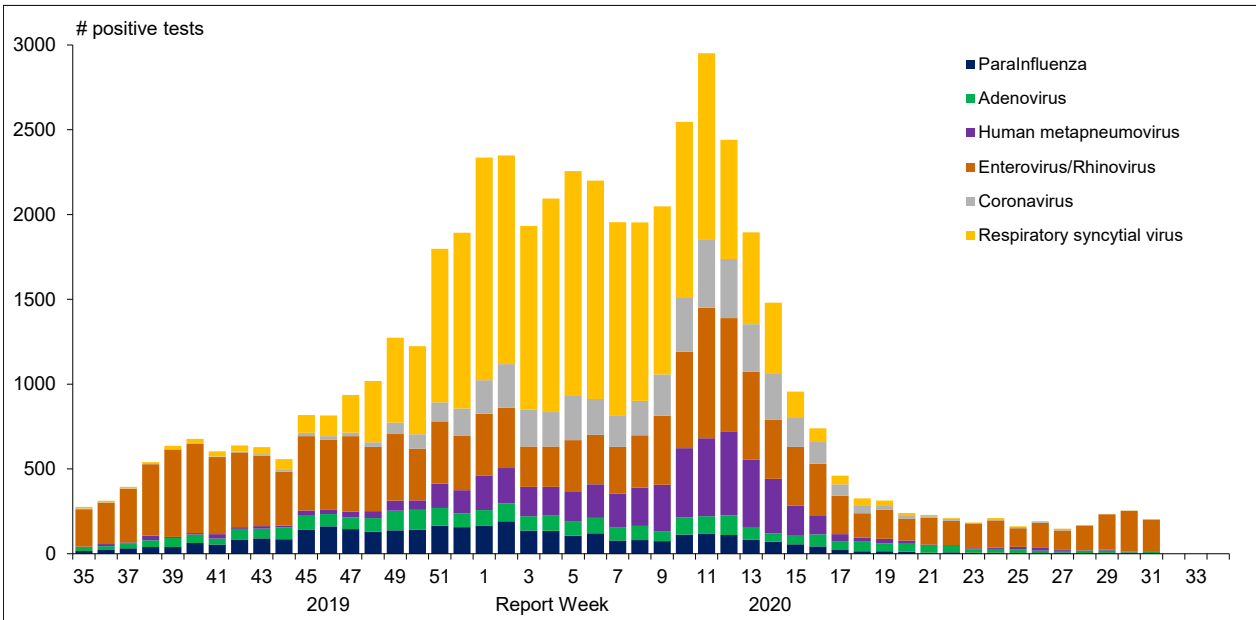


Figure 2 : Positive Influenza Tests (%) in Canada by Region by Week of Report

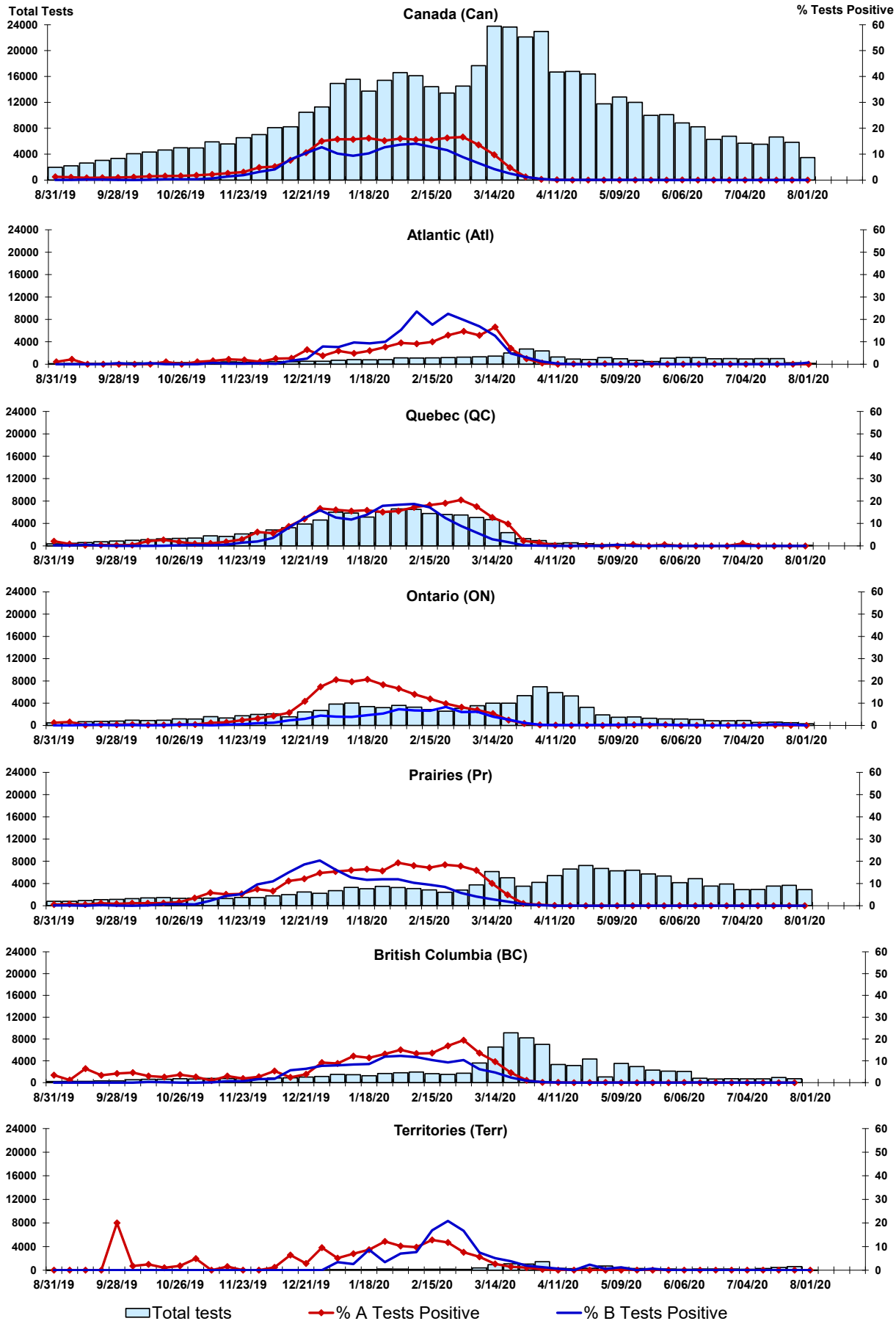


Figure 3: Positive Respiratory syncytial virus (RSV) Tests (%) in Canada by Region by Week of Report

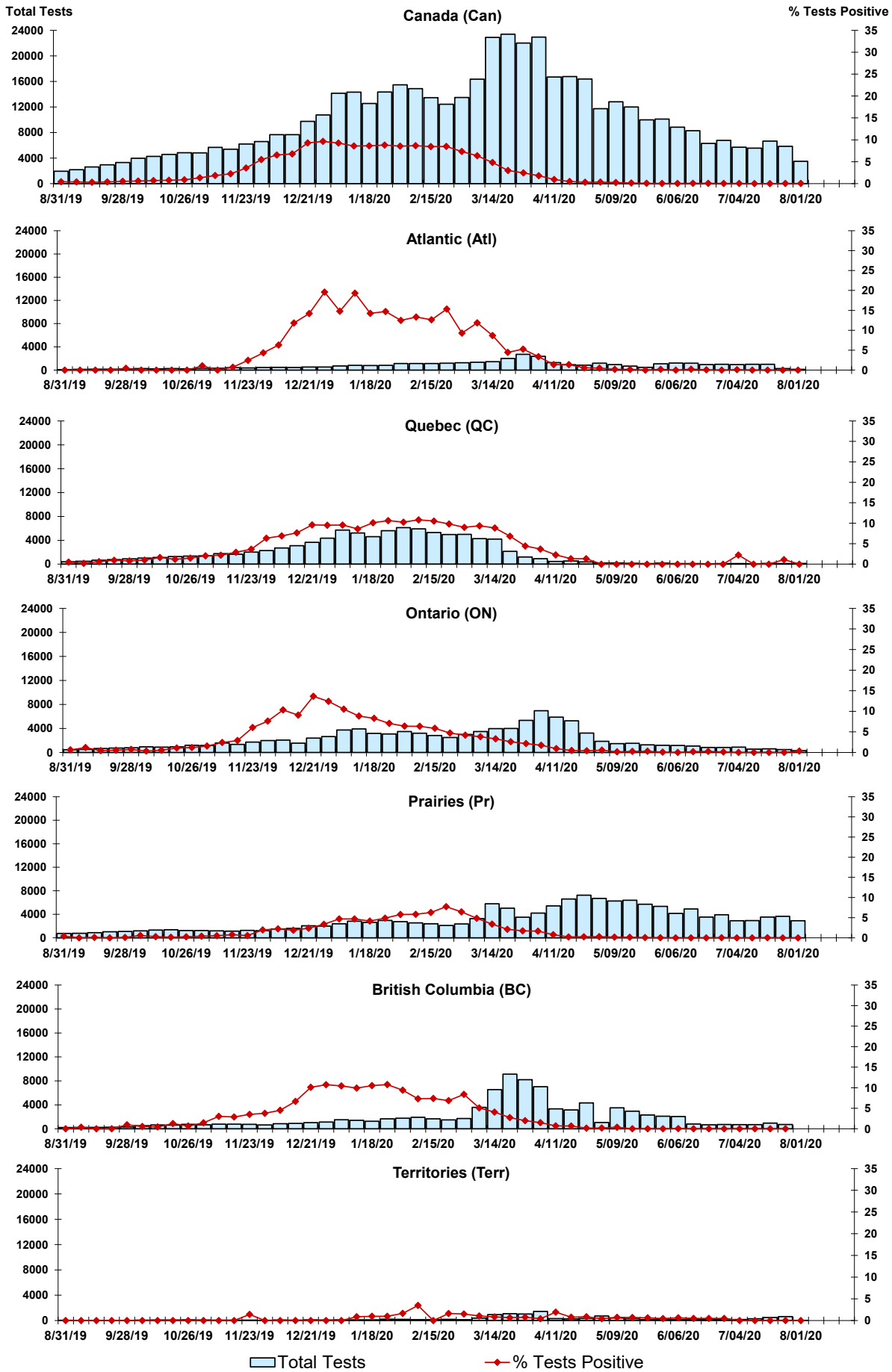


Figure 4: Positive Parainfluenza (PIV) Tests (%) in Canada by Region by Week of Report

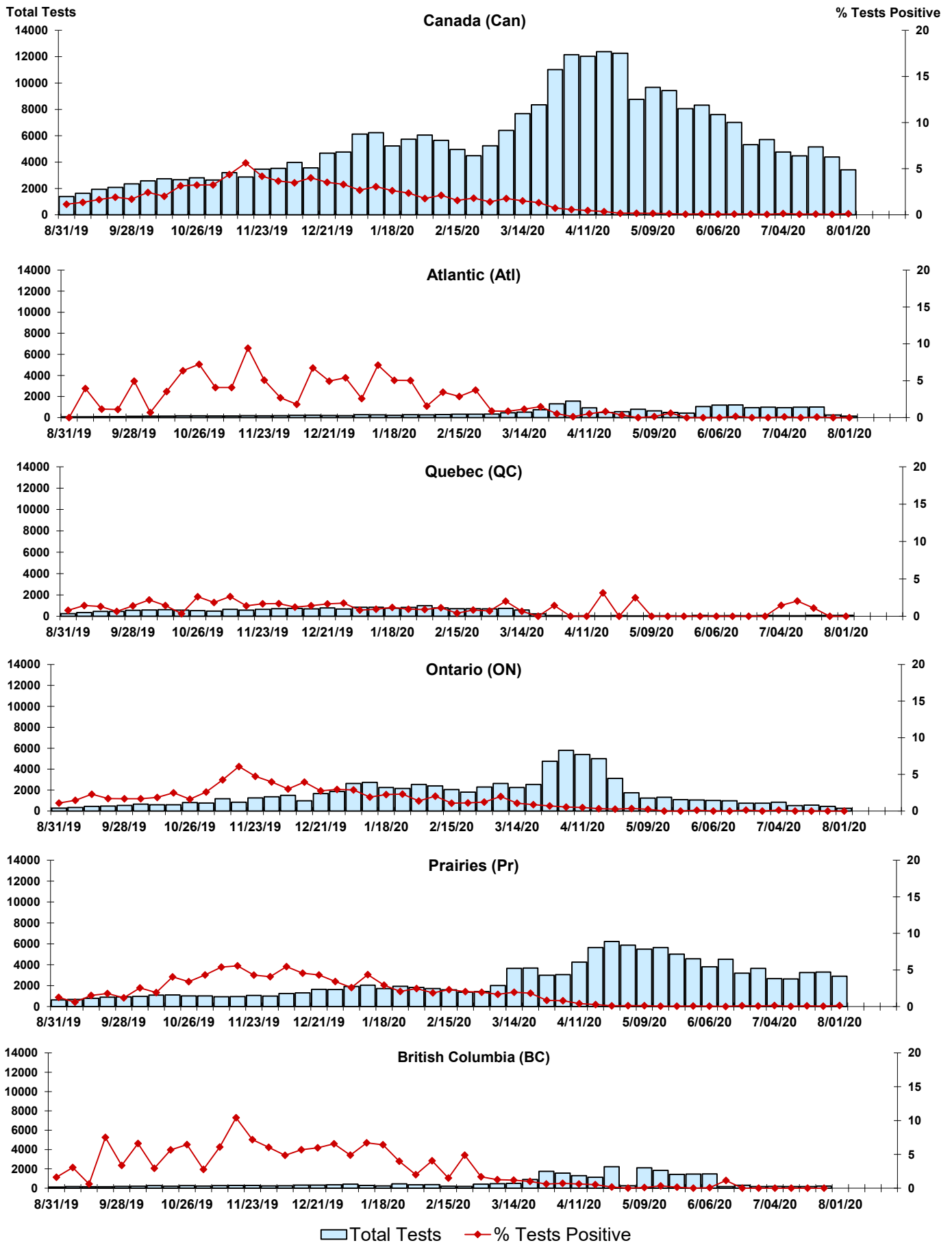


Figure 5: Positive Adenovirus (adeno) Tests (%) in Canada by Region by Week of Report

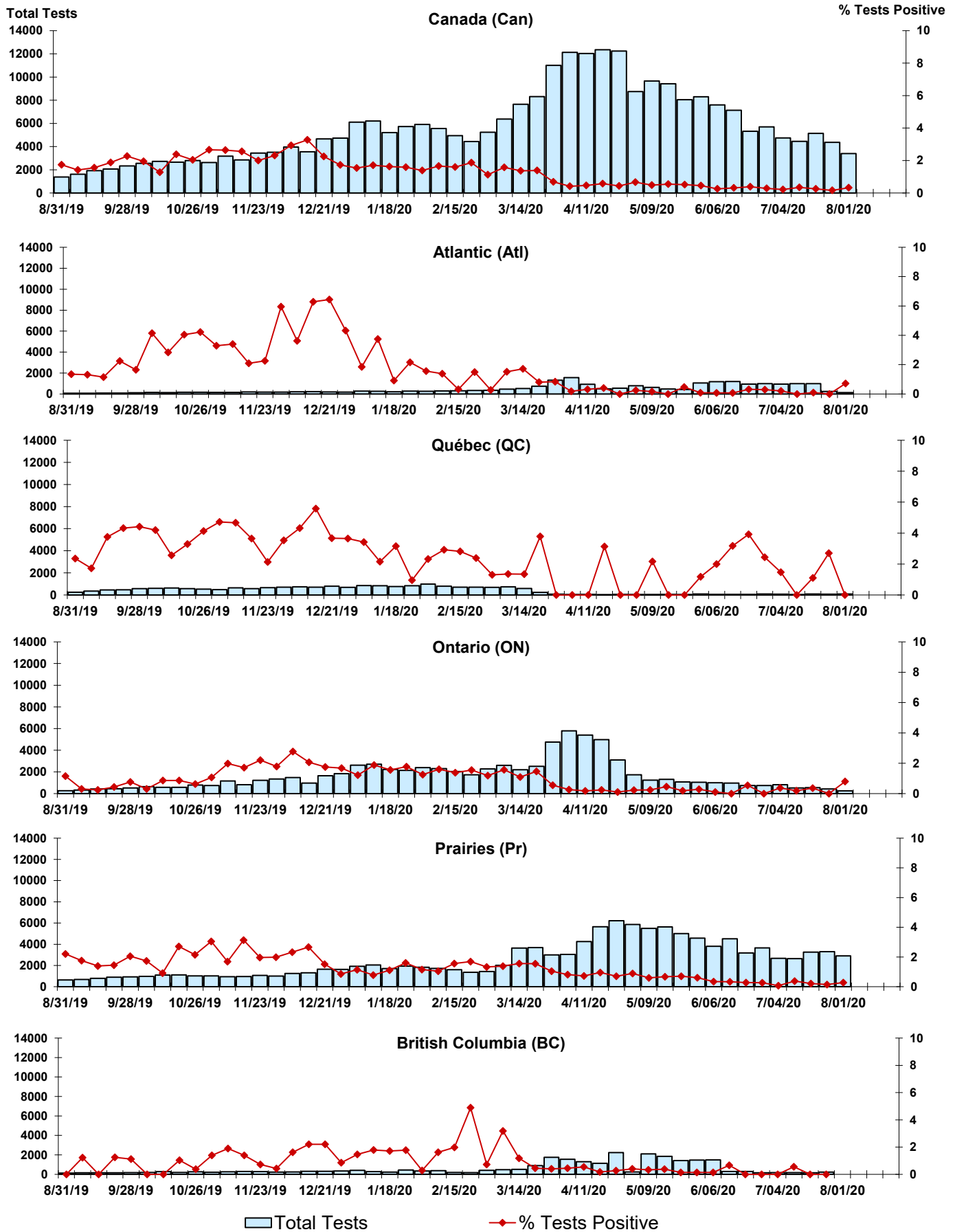


Figure 6: Positive human metapneumovirus (hMPV) Tests (%) in Canada by Region by Week of Report

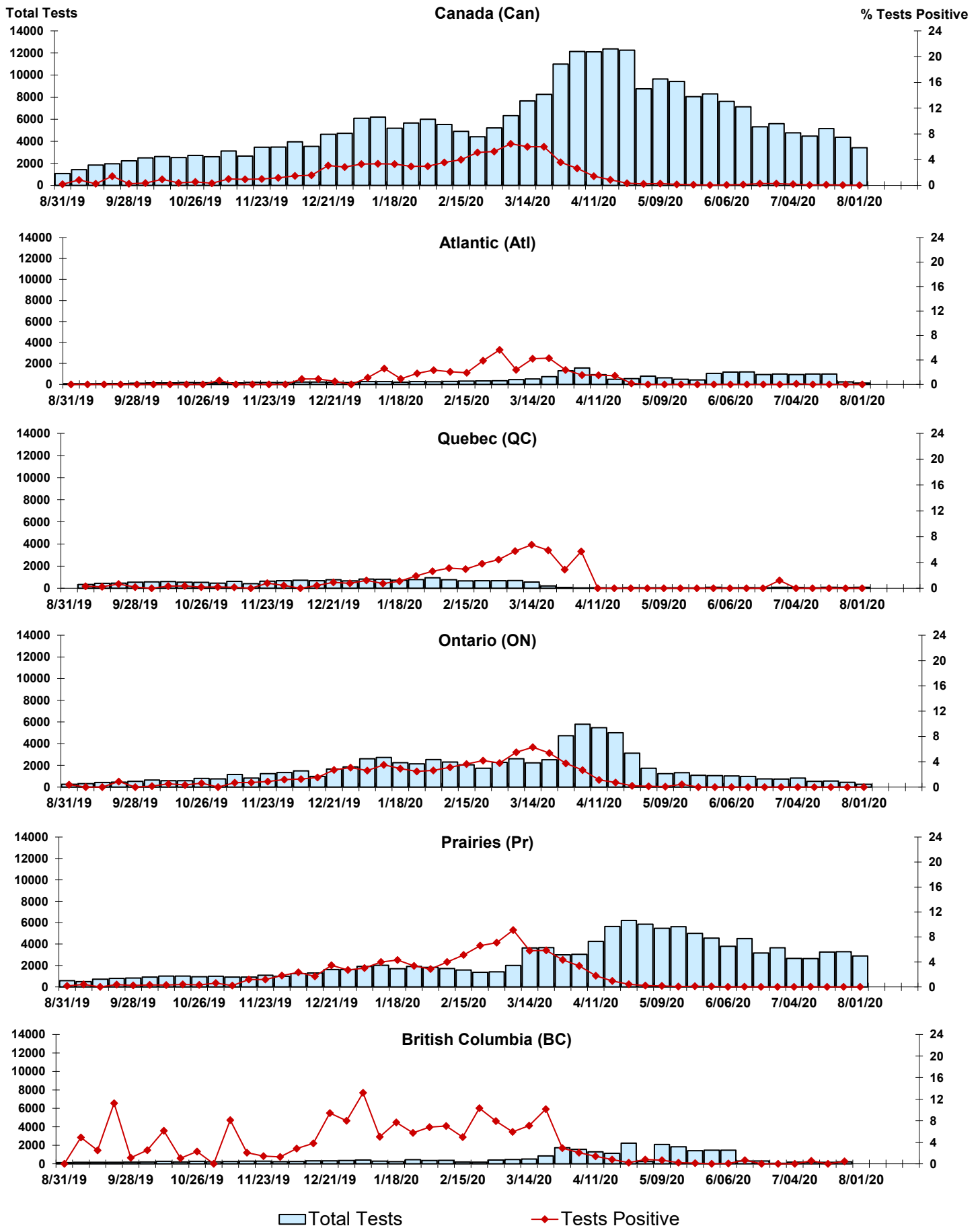




Figure 7: Positive Enterovirus/Rhinovirus (entero/rhino) Tests (%) in Canada by Region by Week of Report

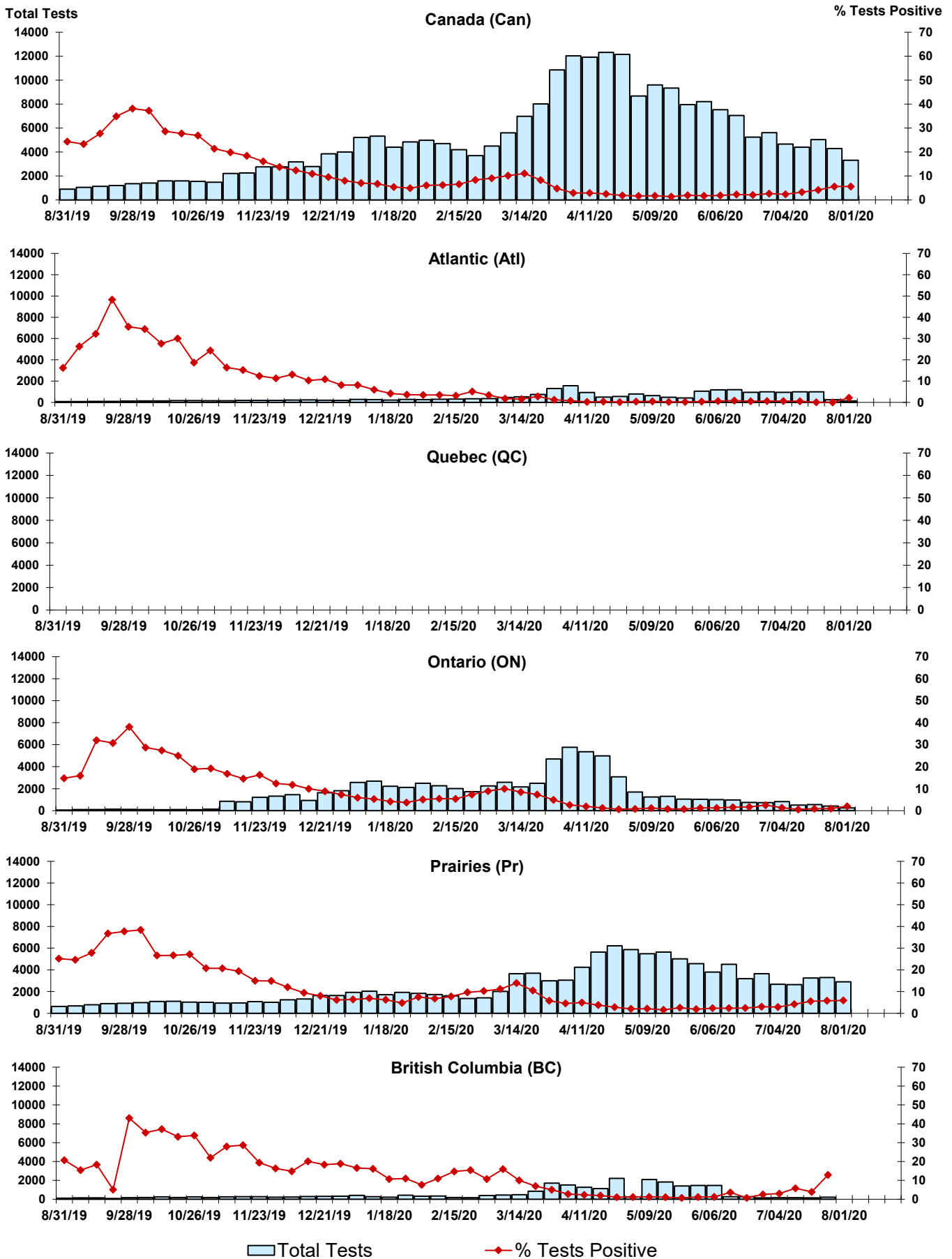
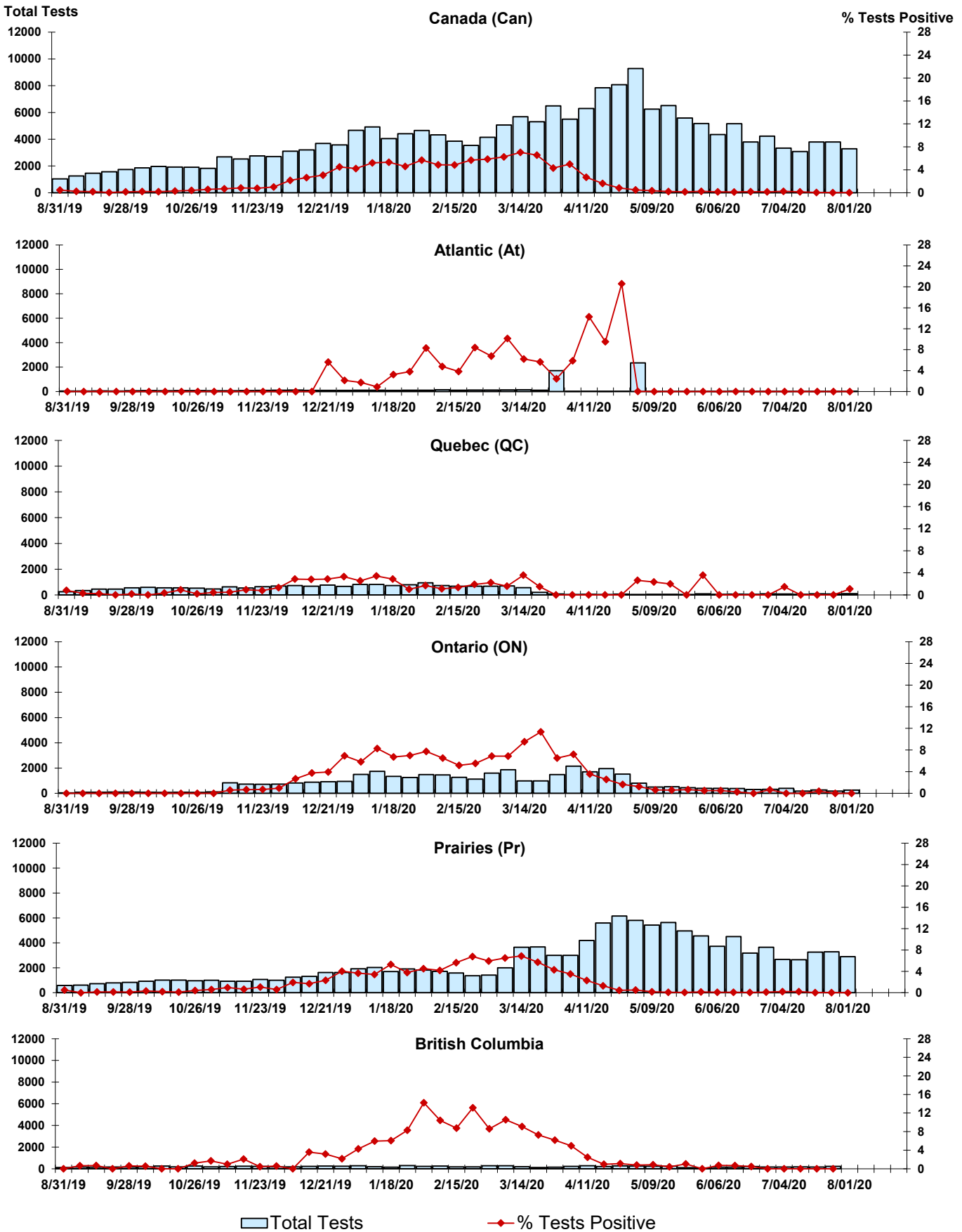


Figure 8: Positive Coronavirus (coron) Tests (%) in Canada by Region by Week of Report



## Abbreviations:

A(H1N1)pdm09: Influenza A(H1N1)pdm09

A(H3): Influenza A(H3N2)

A (UnS): Influenza A (Unsubtyped)

Adeno: Adenovirus

CHEO: Children's Hospital of Eastern Ontario

Coron: Coronavirus

Entero: Enterovirus

hMPV: human metapneumovirus

HSC: Health Sciences Centre

N.A.: Not Applicable

P.H.L.: Public Health Laboratory

P.H.O.L.: Public Health Ontario Laboratory

PIV: Parainfluenza

Rhino: Rhinovirus

RSV: Respiratory syncytial virus

UHN: University Health Network

## Notes:

Specimens from Yukon (YT), Northwest Territories (NT) and Nunavut (NU) are sent to reference laboratories in other provinces. Results reported for the Territories reflect the number of specimens that are identified as originating from YT, NT or NU.

Delays in the reporting of data may cause data to change retrospectively.

Due to reporting delays, the sum of weekly report totals do not add up to cumulative totals.

