

Respiratory Virus Report, Week 33 - ending August 15, 2020

The Respiratory Virus Detection Surveillance System collects data from select laboratories across Canada on the number of tests performed and the number of tests positive for influenza and other respiratory viruses. Data are reported on a weekly basis year-round to the Centre for Immunization and Respiratory Infectious Diseases (CIRID), Public Health Agency of Canada. These data are also summarized in the weekly FluWatch report.

In this Respiratory Virus Report, the number of detections of coronavirus reflects only seasonal human coronaviruses, not the novel pandemic coronavirus (SARS-CoV2) that causes COVID-19. For information on COVID-19, see the [Coronavirus disease \(COVID-19\): Outbreak](#)

Table 1: Respiratory Virus Detections/Isolations for the week ending August 15, 2020 (Reporting Week 202033)

Reporting Laboratory	Flu Tested	A(H1N1)pdm09 Positive	A(H3) Positive	A(UnS) Positive	Total Flu A Positive	Total Flu B Positive	RSV Tested	RSV Positive	PIV Tested	PIV 1 Positive	PIV 2 Positive	PIV 3 Positive	PIV 4 Positive	Other PIV Positive	Adeno Tested	Adeno Positive	hMPV Tested	hMPV Positive	Entero/Rhino Tested	Entero/Rhino Positive	Coron Tested	Coron Positive
Newfoundland	134	0	0	0	0	0	134	0	134	0	0	0	0	0	134	1	134	0	134	1	N.A.	N.A.
Prince Edward Island	3	0	0	0	0	0	3	0	3	0	0	0	0	0	3	0	3	0	3	0	3	0
Nova Scotia	10	0	0	0	0	0	10	0	9	0	0	0	0	0	9	0	9	0	9	0	9	0
New Brunswick	32	0	0	0	0	0	32	0	17	0	0	0	0	0	17	0	17	0	17	1	0	0
Atlantic	179	0	0	0	0	0	179	0	163	0	0	0	0	0	163	1	163	0	163	2	12	0
Région Nord-Est	0	0	0	0	0	0	0	0	0	0	0	0	0	0	0	0	0	0	N.A.	N.A.	0	0
Québec-Chaudière-Appalaches	0	0	0	0	0	0	0	0	0	0	0	0	0	0	0	0	0	0	N.A.	N.A.	0	0
Centre-du-Québec	0	0	0	0	0	0	0	0	0	0	0	0	0	0	0	0	0	0	N.A.	N.A.	0	0
Montréal-Laval	0	0	0	0	0	0	0	0	0	0	0	0	0	0	0	0	0	0	N.A.	N.A.	0	0
Ouest du Québec	0	0	0	0	0	0	0	0	0	0	0	0	0	0	0	0	0	0	N.A.	N.A.	0	0
Montérégie	0	0	0	0	0	0	0	0	0	0	0	0	0	0	0	0	0	0	N.A.	N.A.	0	0
Province of Québec	N.A.	N.A.	N.A.	N.A.	N.A.	N.A.	N.A.	N.A.	N.A.	N.A.	N.A.	N.A.	N.A.	N.A.	N.A.	N.A.	N.A.	N.A.	N.A.	N.A.	N.A.	N.A.
P.H.O.L. - Ottawa	5	0	0	0	0	0	5	0	5	0	0	0	0	0	5	0	5	0	5	0	5	0
CHEO - Ottawa	67	0	0	2	2	3	67	0	15	0	0	0	0	0	15	0	15	0	15	2	15	0
P.H.O.L. - Kingston	5	0	0	0	0	0	5	0	5	0	0	0	0	0	5	0	5	0	5	0	5	0
UHN / Mount Sinai Hospital	0	0	0	0	0	0	0	0	0	0	0	0	0	0	0	0	0	0	0	0	N.A.	N.A.
P.H.O.L. - Toronto	67	0	0	0	0	0	67	0	67	0	0	0	0	0	67	0	67	0	67	0	67	0
Sick Kids Hospital - Toronto	0	0	0	0	0	0	0	0	0	0	0	0	0	0	0	0	0	0	0	0	0	0
Sunnybrook & Women's College HSC	0	0	0	0	0	0	0	0	0	0	0	0	0	0	0	0	0	0	0	0	0	0
P.H.O.L. - Sault Ste. Marie	3	0	0	0	0	0	3	0	3	0	0	0	0	0	3	0	3	0	3	0	3	0
P.H.O.L. - Timmins	5	0	0	0	0	0	5	0	5	0	0	0	0	0	5	0	5	0	5	0	5	0
St. Joseph's - London	17	0	0	0	0	0	17	0	17	0	0	0	0	0	17	0	17	0	17	0	14	0
P.H.O.L. - London	31	0	0	0	0	0	31	0	31	0	0	0	0	0	31	0	31	0	31	2	31	0
P.H.O.L. - Orillia	0	0	0	0	0	0	0	0	0	0	0	0	0	0	0	0	0	0	0	0	0	0
P.H.O.L. - Thunder Bay	4	0	0	0	0	0	4	0	4	0	0	0	0	0	4	0	4	0	4	0	4	0
P.H.O.L. - Sudbury	7	0	0	0	0	0	7	0	7	0	0	0	0	0	7	0	7	0	7	0	7	0
P.H.O.L. - Hamilton	18	0	0	0	0	0	18	0	18	0	0	0	0	0	18	0	18	0	18	0	18	0
P.H.O.L. - Peterborough	8	0	0	0	0	0	8	0	8	0	0	0	0	0	8	0	8	0	8	0	8	0
St. Joseph's - Hamilton	97	0	0	0	0	0	97	0	97	0	0	0	0	0	97	0	97	0	97	1	0	0
Province of Ontario	334	0	0	2	2	3	334	0	282	0	0	0	0	0	282	0	282	0	282	5	182	0
Province of Manitoba	485	0	0	0	0	0	485	0	69	0	0	0	0	0	69	0	60	0	69	12	60	0
Regina	45	0	0	0	0	0	45	0	40	0	0	0	0	0	40	0	40	0	40	9	40	0
Saskatoon	0	0	0	0	0	0	0	0	0	0	0	0	0	0	0	0	0	0	0	0	0	0
Province of Saskatchewan	45	0	0	0	0	0	45	0	40	0	0	0	0	0	40	0	40	0	40	9	40	0
Province of Alberta	2426	1	0	0	1	0	2422	0	2422	0	0	0	0	0	2422	2	2422	0	2422	159	2422	2
Prairies	2956	1	0	0	1	0	2952	0	2531	0	0	0	0	0	2531	2	2522	0	2531	180	2522	2
British Columbia	752	0	0	0	0	0	752	0	123	0	0	0	0	0	123	2	123	0	113	6	113	1
Yukon	247	0	0	0	0	0	247	0	N.A.	N.A.	N.A.	N.A.	N.A.	N.A.	N.A.	N.A.	N.A.	N.A.	N.A.	N.A.	N.A.	N.A.
Northwest Territories	1	0	0	0	0	0	1	0	1	0	0	0	0	0	1	0	1	0	1	0	1	0
Nunavut	66	0	0	0	0	0	66	0	66	0	0	0	0	0	66	0	66	0	66	17	3	0
Territories	314	0	0	0	0	0	314	0	67	0	0	0	0	0	67	0	67	0	67	17	4	0
CANADA	4535	1	0	2	3	3	4531	0	3166	0	0	0	0	0	3166	5	3157	0	3156	210	2833	3

Specimens from Yukon (YT), Northwest Territories (NT) and Nunavut (NU) are sent to reference laboratories in other provinces and reported results reflect specimens identified as originating from YT, NT or NU.

Results from British Columbia comprise of specimens from the following sites: BC Children's and Women's Hospital, Children's and Women's Hospital Laboratory, Fraser Health Medical Microbiology Laboratory, Island Health, Providence Health Care, Powell River Hospital, St. Paul's Hospital, Vancouver General Hospital, Victoria General Hospital, Victoria Coastal Health, BCCDC Public Health Laboratory, Interior Health Authority sites and Northern Health Authority sites.

Delays in the reporting of data may cause data to change retrospectively.

For BC, only data from subtyped influenza A specimens are included in the weekly number of influenza detections and so the sum of A(H1N1)pdm09, A(H3), and A(UnS) positive results may not equal the sum of total Flu A positive results.

Table 2: Respiratory Virus Detections/Isolations for the period August 31, 2019 - August 15, 2020 (Reporting Weeks 201935-202033)

Reporting Laboratory	Flu Tested	A(H1N1)pdm09 Positive	A(H3) Positive	A(UnS) Positive	Total Flu A Positive	Total Flu B Positive	RSV Tested	RSV Positive	PIV Tested	PIV 1 Positive	PIV 2 Positive	PIV 3 Positive	PIV 4 Positive	Other PIV Positive	Adeno Tested	Adeno Positive	hMPV Tested	hMPV Positive	Entero/Rhino Tested	Entero/Rhino Positive	Coron Tested	Coron Positive
Newfoundland	19905	8	33	167	208	514	19905	337	19905	149	2	13	0	0	19905	126	19905	190	19905	396	N.A.	N.A.
Prince Edward Island	1274	0	0	144	144	78	1274	146	53	1	0	0	1	0	53	0	51	0	53	16	53	2
Nova Scotia	6724	3	2	196	201	248	6828	625	693	13	1	3	5	0	727	12	727	11	727	77	740	14
New Brunswick	12000	61	29	957	1047	1292	11938	1077	2539	53	7	0	13	0	2539	64	2539	16	2539	295	6441	125
Atlantic	39903	72	64	1464	1600	2132	39945	2185	23190	216	10	16	19	0	23224	202	23222	217	23224	784	7234	141
Région Nord-Est	9286	0	0	1136	1136	1323	7958	645	0	0	0	0	0	0	0	0	0	0	N.A.	N.A.	0	0
Québec-Chaudière-Appalaches	14086	0	0	1900	1900	1829	14003	1318	2807	31	4	3	14	0	2854	80	2248	25	N.A.	N.A.	2188	35
Centre-du-Québec	19038	0	0	2909	2909	2395	15333	1385	67	0	0	1	0	0	67	0	67	0	N.A.	N.A.	67	1
Montréal-Laval	38644	0	0	4023	4023	2411	37491	2400	17345	146	5	35	13	0	17345	526	16879	270	N.A.	N.A.	17189	266
Ouest du Québec	12607	0	0	1745	1745	1278	11759	1089	0	0	0	0	0	0	0	0	0	0	N.A.	N.A.	0	0
Montérégie	8520	0	0	1133	1133	791	8292	610	0	0	0	0	0	0	0	0	0	0	N.A.	N.A.	0	0
Province of Québec	102181	0	0	12846	12846	10027	94836	7447	20219	177	9	39	27	0	20266	606	19194	295	N.A.	N.A.	19444	302
P.H.O.L. - Ottawa	1935	108	61	3	172	71	1926	86	1901	2	0	0	0	41	1901	18	1887	61	1745	78	1730	68
CHEO - Ottawa	10501	2	0	667	669	474	10501	694	1135	17	0	5	10	5	1135	20	1135	20	1138	180	1126	32
P.H.O.L. - Kingston	1632	62	27	4	93	23	1610	68	1606	1	0	0	0	33	1606	17	1597	60	1437	64	1424	84
UHN / Mount Sinai Hospital	12092	9	0	651	660	218	12092	348	697	7	2	10	2	0	0	0	791	16	0	0	N.A.	N.A.
P.H.O.L. - Toronto	19029	1349	144	36	1529	355	18565	416	18486	34	0	3	0	240	18486	159	18266	440	15942	812	15702	739
Sick Kids Hospital - Toronto	2407	104	13	99	216	168	1936	208	1936	26	5	8	27	0	1936	53	1936	48	1936	366	1936	92
Sunnybrook & Women's College HSC	3456	0	0	124	124	25	3456	64	3456	9	0	17	0	0	3197	11	3316	35	3316	66	120	0
P.H.O.L. - Sault Ste. Marie	635	20	0	0	20	8	610	28	611	1	0	0	0	25	611	5	608	33	560	14	557	13
P.H.O.L. - Timmins	701	65	3	2	70	12	669	32	672	0	0	0	0	18	672	1	669	30	644	5	639	19
St. Joseph's - London	4806	0	0	238	238	114	4804	334	1770	19	4	3	14	0	1770	25	1770	33	991	113	913	22
P.H.O.L. - London	5530	309	112	9	430	145	5495	250	5481	8	0	0	0	90	5483	49	5439	180	5025	298	4971	259
P.H.O.L. - Orillia	1712	81	31	3	115	33	1709	89	1706	4	0	0	0	33	1706	8	1701	50	1515	81	1508	90
P.H.O.L. - Thunder Bay	1521	82	17	9	108	45	1519	64	1519	0	0	1	0	41	1519	22	1508	52	1471	120	1459	44
P.H.O.L. - Sudbury	951	29	14	4	47	15	945	45	946	0	0	1	0	21	946	9	936	14	874	28	863	34
P.H.O.L. - Hamilton	5280	286	39	12	337	117	5130	164	5111	10	1	0	0	120	5111	69	5090	139	4516	339	4491	256
P.H.O.L. - Peterborough	1303	66	4	1	71	10	1294	33	1293	3	0	0	0	40	1292	10	1287	47	1038	77	1030	49
St. Joseph's - Hamilton	33484	0	0	1617	1617	806	33484	1275	33484	119	6	26	0	0	33484	276	33484	462	33484	1295	0	0
Province of Ontario	106975	2572	465	3479	6516	2639	105745	4198	81810	260	18	74	53	707	80855	752	81420	1720	75632	3936	38469	1781
Manitoba	25563	174	134	1340	1648	889	25225	1010	4628	48	9	4	8	0	4628	61	3445	59	4628	547	3012	79
Regina	14291	43	26	1195	1264	665	14300	1043	6415	149	16	6	32	0	6415	104	6338	205	6415	919	6415	151
Saskatoon	4455	0	0	318	318	235	4455	182	4519	98	12	6	7	0	4519	66	4522	27	4519	530	4519	45
Province of Saskatchewan	18746	43	26	1513	1582	900	18755	1225	10934	247	28	12	39	0	10934	170	10860	232	10934	1449	10934	196
Province of Alberta	120580	1742	1287	1346	4375	3417	113119	0	113119	497	112	99	273	0	113119	936	113119	1631	113119	7098	113119	1748
Prairies	164889	1959	1447	4199	7605	5206	157099	2235	128681	792	149	115	320	0	128681	1167	127424	1922	128681	9094	127065	2023
British Columbia	93336	277	244	1852	4091	2575	92976	2771	27456	185	60	38	52	86	27582	173	27395	692	26665	1890	10031	317
Yukon	9854	4	8	55	73	45	9854	23	N.A.	N.A.	N.A.	N.A.	N.A.	N.A.	N.A.	N.A.	N.A.	N.A.	N.A.	N.A.	N.A.	N.A.
Northwest Territories	1646	90	19	1	110	191	1635	0	1635	14	2	13	13	0	1635	22	1635	90	1635	202	1635	77
Nunavut	1856	5	14	42	61	73	1853	53	1853	36	4	1	6	0	1853	36	1853	84	1853	298	373	41
Territories	13356	99	41	98	244	309	13342	76	3488	50	6	14	19	0	3488	58	3488	174	3488	500	2008	118
CANADA	520640	4979	2261	23938	32902	22888	503943	18912	284844	1680	252	296	490	793	284096	2958	282143	5020	257690	16204	204251	4682

Specimens from YT, NT and NU are sent to reference laboratories in other provinces and reported results reflect specimens identified as originating from YT, NT or NU.

Results from British Columbia comprise of specimens from the following sites: BC Children's and Women's Hospital, Children's and Women's Hospital Laboratory, Fraser Health Medical Microbiology Laboratory, Island Health, Providence Health Care, Powell River Hospital, St. Paul's Hospital, Vancouver General Hospital, Victoria General Hospital, Victoria Coastal Health, BCCDC P

Delays in the reporting of data may cause data to change retrospectively. Due to reporting delays, the sum of weekly report totals do not add up to cumulative totals.

For BC, only data from subtyped influenza A specimens are included in the weekly number of influenza detections and so the sum of A(H1N1)pdm09, A(H3), and A(UnS) positive results may not equal the sum of total Flu A positive results.

Figure 1: Number positive laboratory tests for other respiratory viruses by report week, Canada, 2019-20

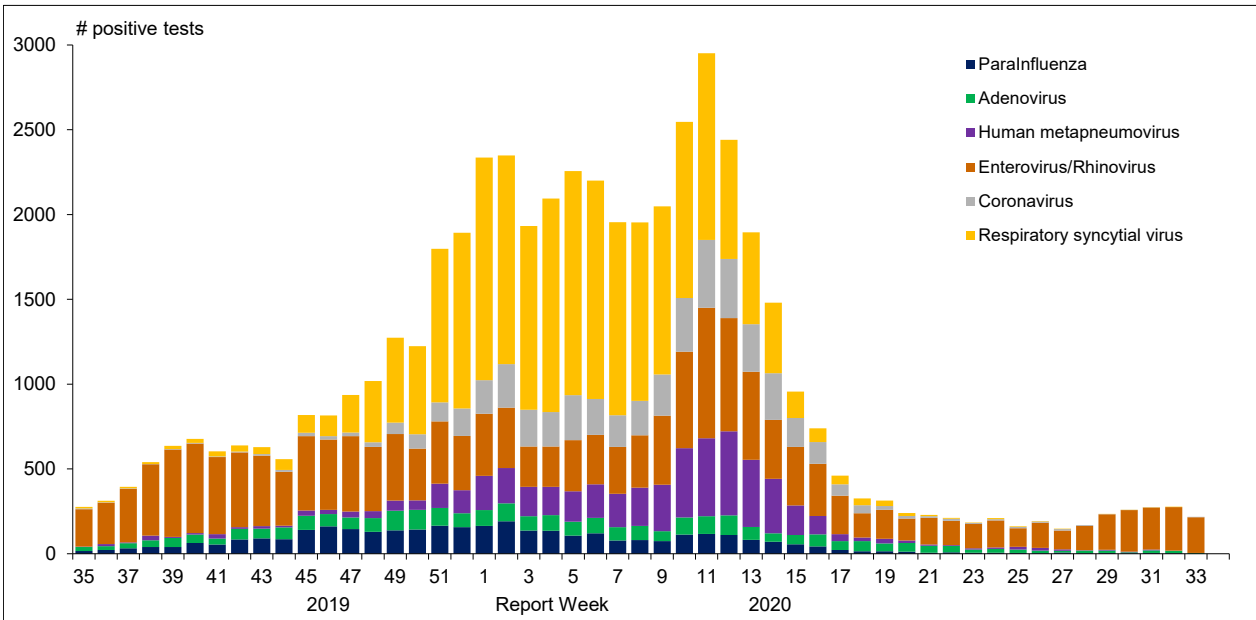


Figure 2 : Positive Influenza Tests (%) in Canada by Region by Week of Report

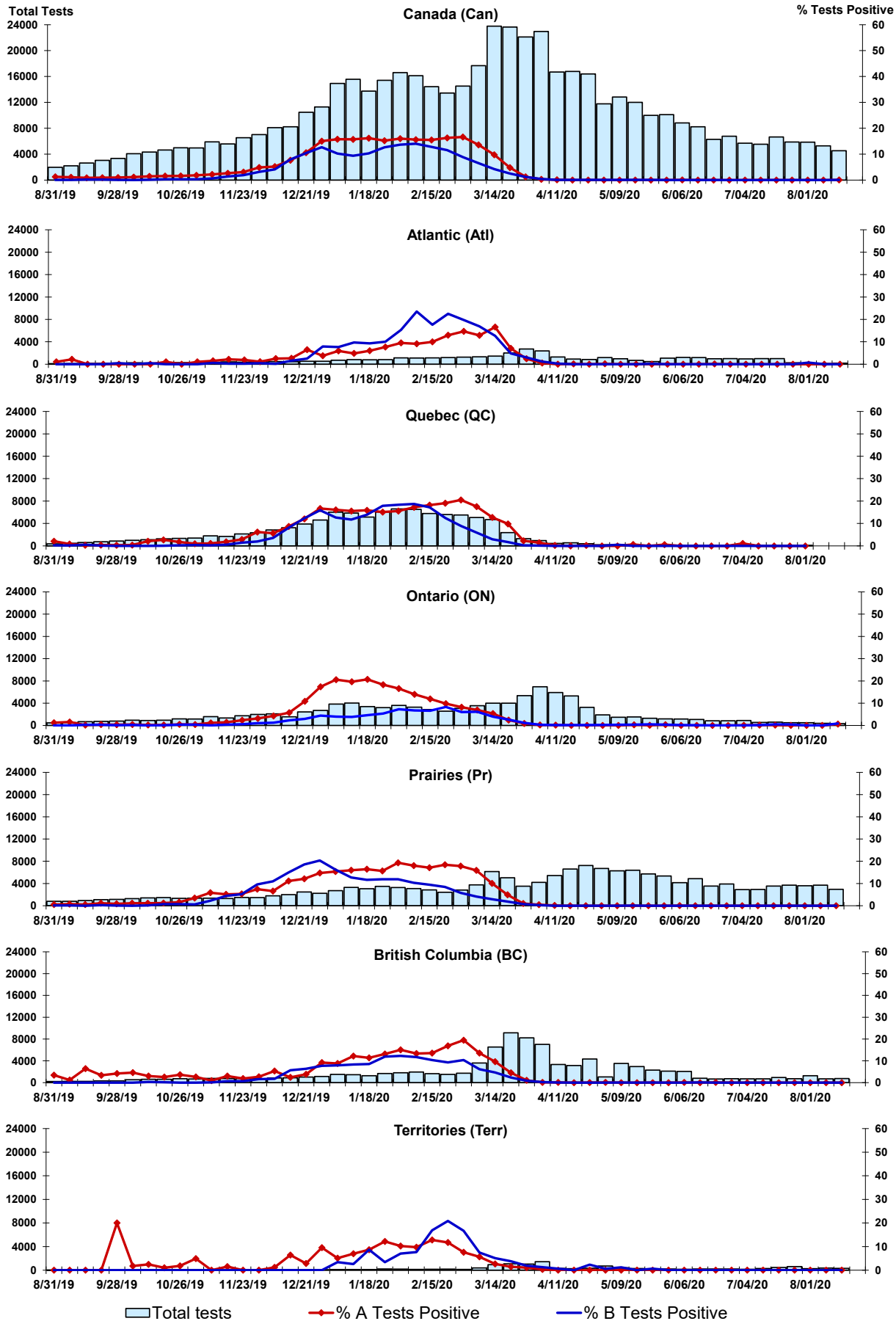


Figure 3: Positive Respiratory syncytial virus (RSV) Tests (%) in Canada by Region by Week of Report

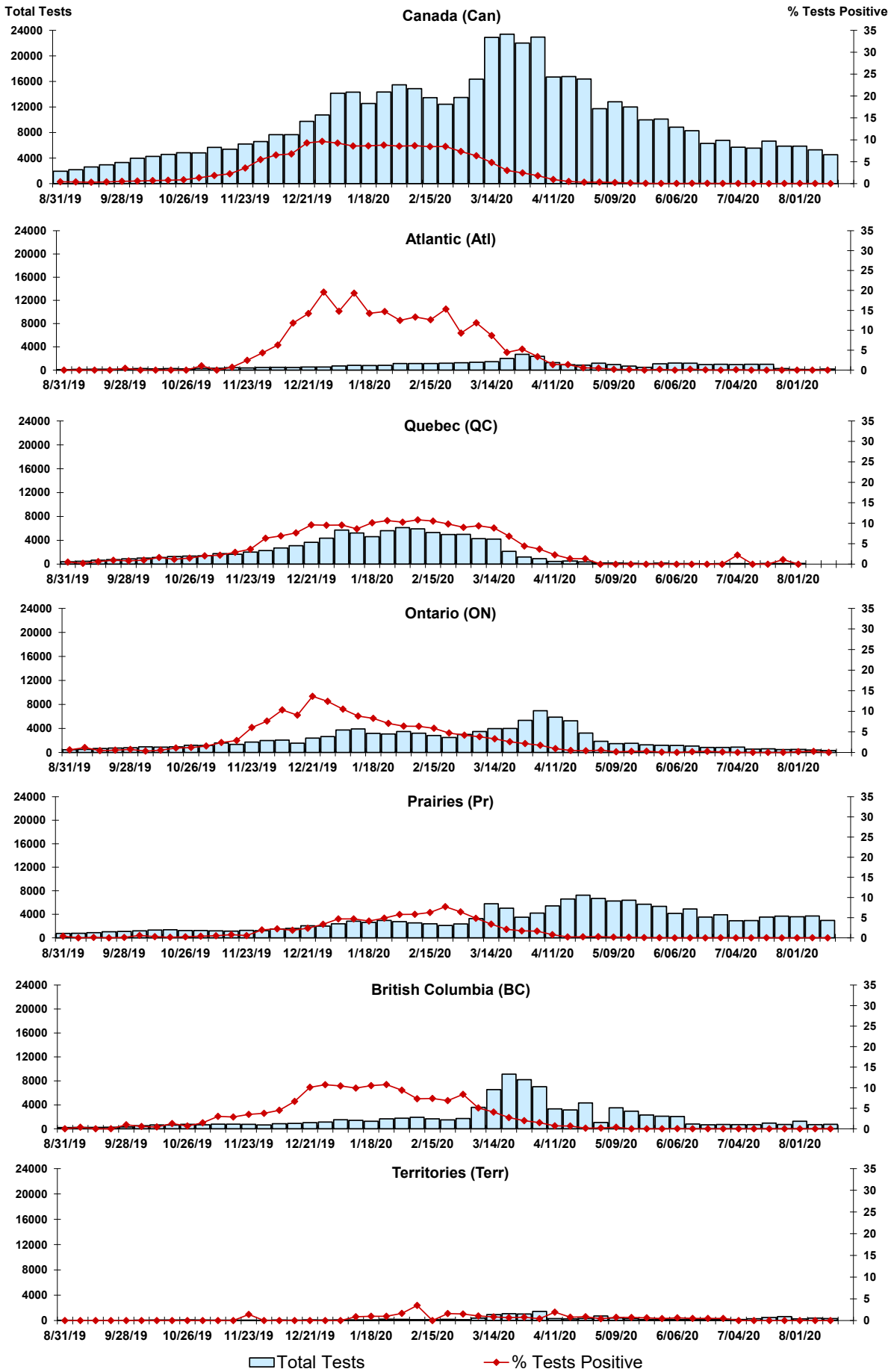


Figure 4: Positive Parainfluenza (PIV) Tests (%) in Canada by Region by Week of Report

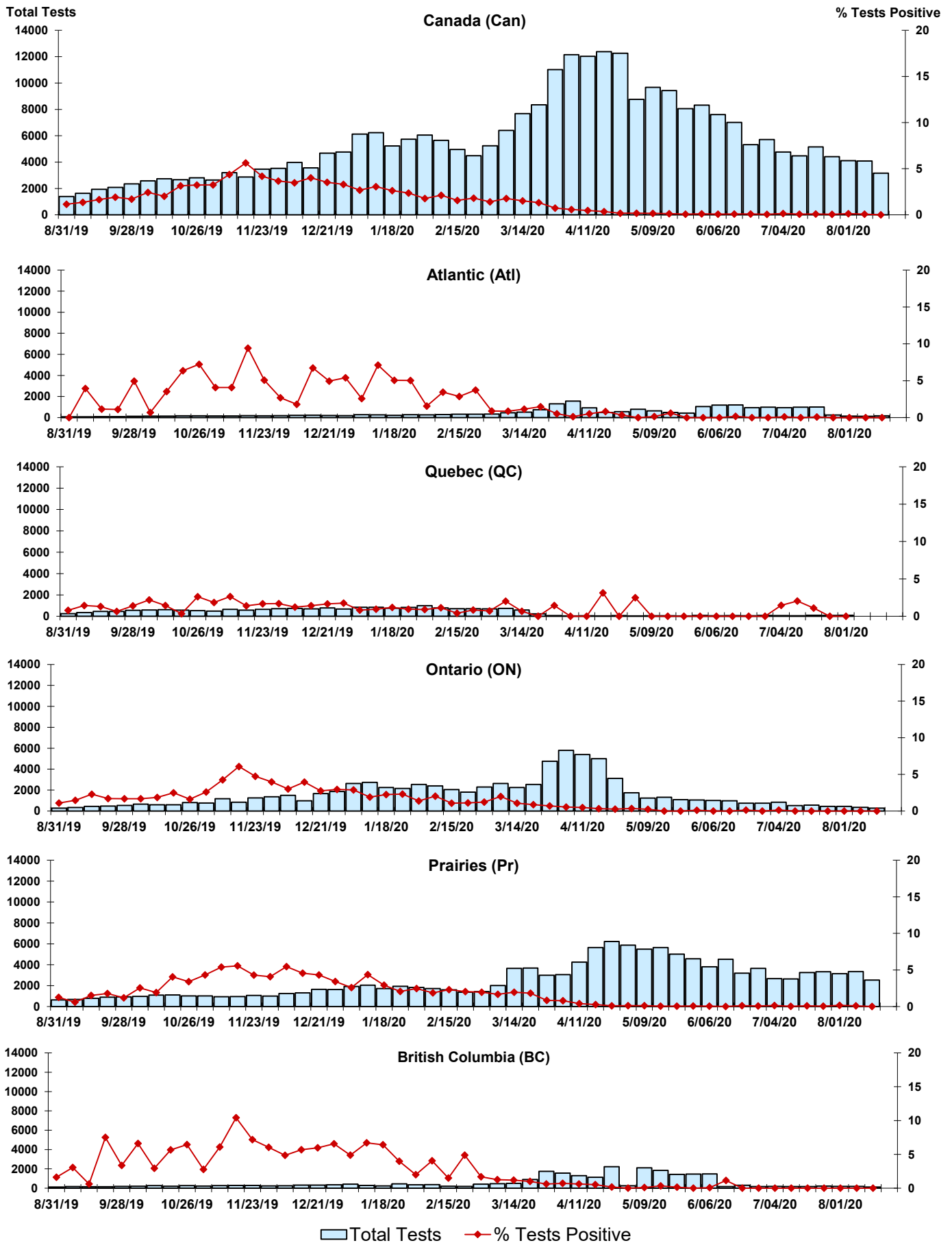


Figure 5: Positive Adenovirus (adeno) Tests (%) in Canada by Region by Week of Report

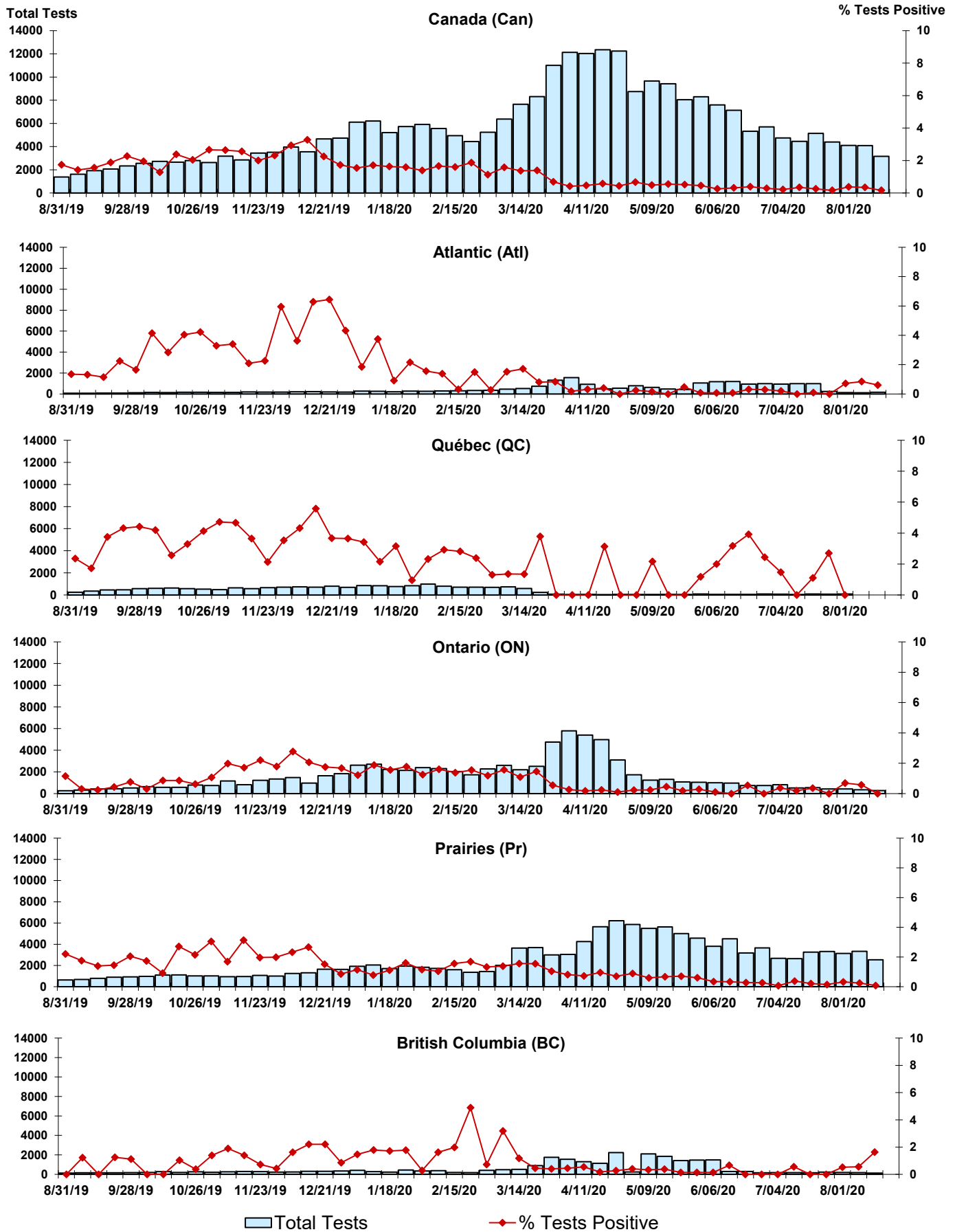


Figure 6: Positive human metapneumovirus (hMPV) Tests (%) in Canada by Region by Week of Report

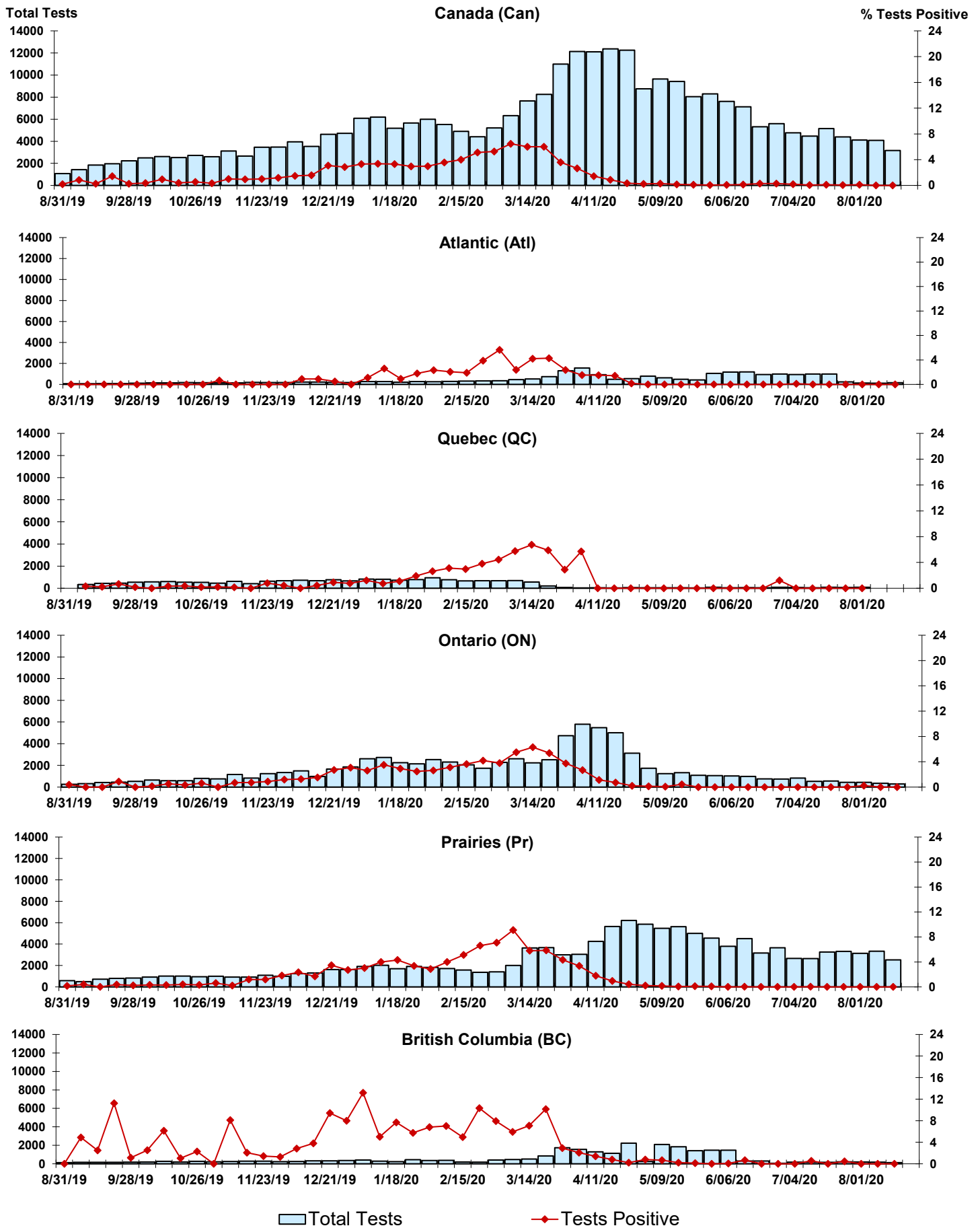


Figure 7: Positive Enterovirus/Rhinovirus (entero/rhino) Tests (%) in Canada by Region by Week of Report

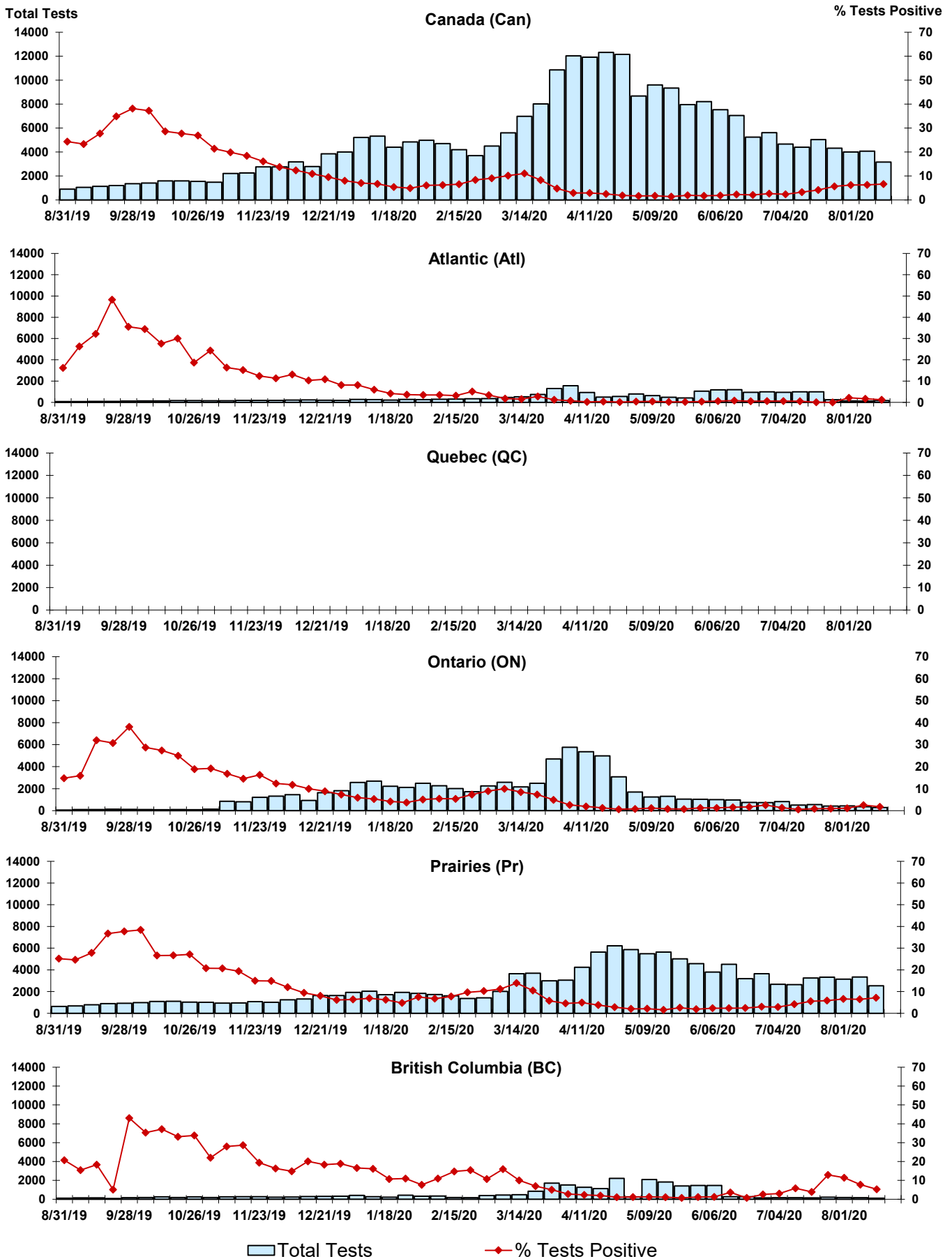
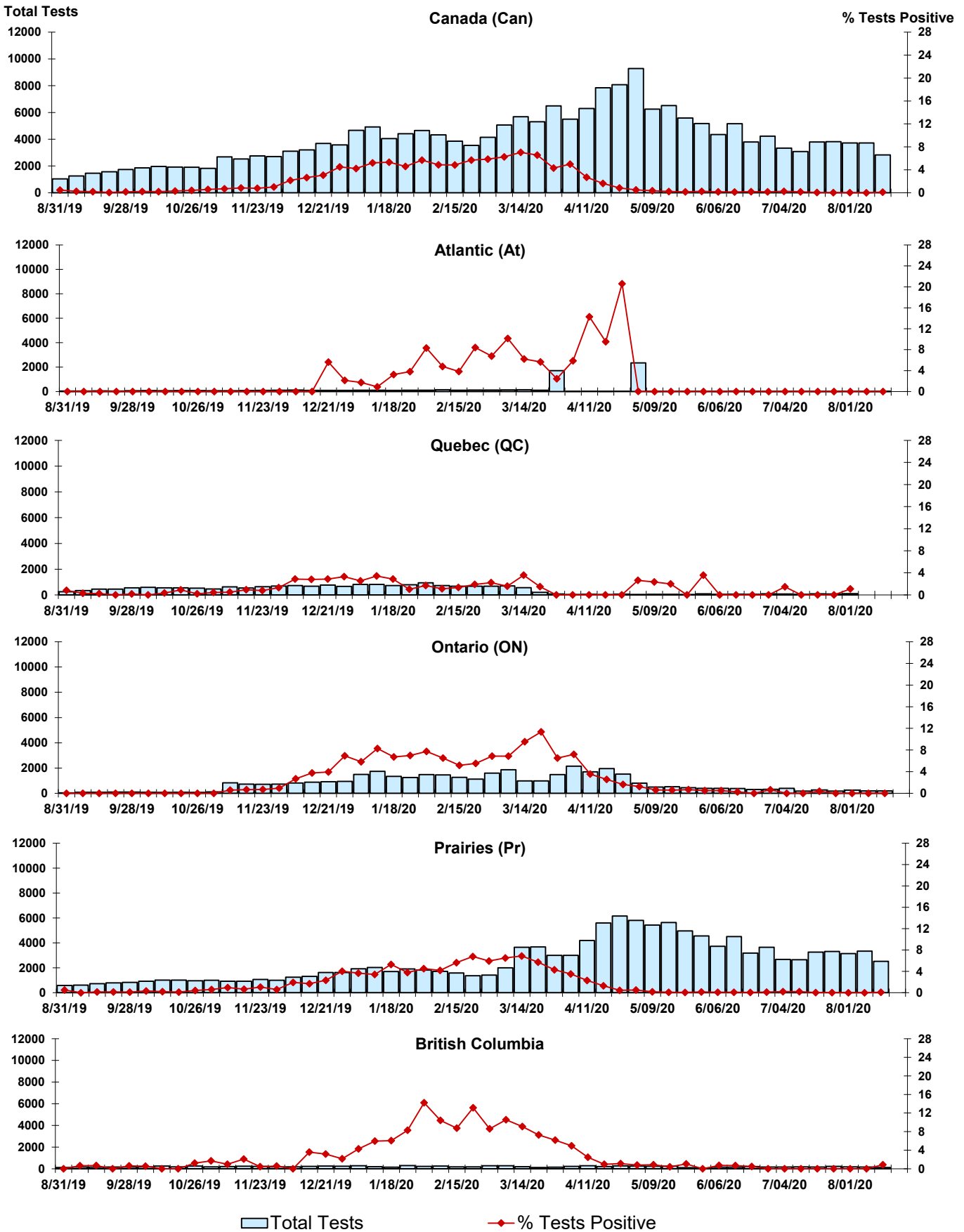


Figure 8: Positive Coronavirus (coron) Tests (%) in Canada by Region by Week of Report



Abbreviations:

A(H1N1)pdm09: Influenza A(H1N1)pdm09

A(H3): Influenza A(H3N2)

A (UnS): Influenza A (Unsubtyped)

Adeno: Adenovirus

CHEO: Children's Hospital of Eastern Ontario

Coron: Coronavirus

Entero: Enterovirus

hMPV: human metapneumovirus

HSC: Health Sciences Centre

N.A.: Not Applicable

P.H.L.: Public Health Laboratory

P.H.O.L.: Public Health Ontario Laboratory

PIV: Parainfluenza

Rhino: Rhinovirus

RSV: Respiratory syncytial virus

UHN: University Health Network

Notes:

Specimens from Yukon (YT), Northwest Territories (NT) and Nunavut (NU) are sent to reference laboratories in other provinces. Results reported for the Territories reflect the number of specimens that are identified as originating from YT, NT or NU.

Delays in the reporting of data may cause data to change retrospectively.

Due to reporting delays, the sum of weekly report totals do not add up to cumulative totals.

