

Respiratory Virus Report, Week 46 - ending November 14, 2020

The Respiratory Virus Detection Surveillance System collects data from select laboratories across Canada on the number of tests performed and the number of tests positive for influenza and other respiratory viruses. Data are reported on a weekly basis year-round to the Centre for Immunization and Respiratory Infectious Diseases (CIRID), Public Health Agency of Canada. These data are also summarized in the weekly FluWatch report.

In this Respiratory Virus Report, the number of detections of coronavirus reflects only seasonal human coronaviruses, not the novel pandemic coronavirus (SARS-CoV2) that causes COVID-19. For information on COVID-19, see the [Coronavirus disease \(COVID-19\): Outbreak](#)

Table 1: Respiratory Virus Detections/Isolations for the week ending November 14, 2020 (Reporting Week 202046)

Reporting Laboratory	Flu Tested	A(H1N1)pdm09 Positive	A(H3) Positive	A(UnS) Positive	Total Flu A Positive	Total Flu B Positive	RSV Tested	RSV Positive	PIV Tested	PIV 1 Positive	PIV 2 Positive	PIV 3 Positive	PIV 4 Positive	Other PIV Positive	Adeno Tested	Adeno Positive	hMPV Tested	hMPV Positive	Entero/Rhino Tested	Entero/Rhino Positive	Coron Tested	Coron Positive
Newfoundland	273	0	0	0	0	0	273	0	273	0	0	0	0	0	273	0	273	0	273	78	N.A.	N.A.
Prince Edward Island	95	0	0	0	0	0	95	0	94	0	0	0	0	0	94	1	94	0	94	22	94	0
Nova Scotia	47	0	0	0	0	0	47	0	15	0	0	0	0	0	15	1	15	0	15	3	15	0
New Brunswick	50	0	0	0	0	0	50	0	20	0	0	0	0	0	20	1	20	0	20	0	20	0
Atlantic	465	0	0	0	0	0	465	0	402	0	0	0	0	0	402	3	402	0	402	103	129	0
Région Nord-Est	49	0	0	0	0	0	25	0	0	0	0	0	0	0	0	0	0	0	N.A.	N.A.	0	0
Québec-Chaudière-Appalaches	22	0	0	0	0	0	26	0	15	0	0	0	0	0	15	2	15	0	N.A.	N.A.	15	0
Centre-du-Québec	27	0	0	0	0	0	27	0	8	0	0	0	0	0	8	1	8	0	N.A.	N.A.	8	0
Montréal-Laval	136	0	0	0	0	0	133	0	94	0	0	0	0	0	94	3	94	0	N.A.	N.A.	94	0
Ouest du Québec	32	0	0	0	0	0	31	0	0	0	0	0	0	0	0	0	0	0	N.A.	N.A.	0	0
Montérégie	0	0	0	0	0	0	0	0	0	0	0	0	0	0	0	0	0	0	N.A.	N.A.	0	0
Province of Québec	266	0	0	0	0	0	242	0	117	0	0	0	0	0	117	6	117	0	N.A.	N.A.	117	0
P.H.O.L. - Ottawa	29	0	0	0	0	0	29	0	27	0	0	0	0	0	27	0	27	0	27	0	27	0
CHEO - Ottawa	159	0	0	0	0	0	159	1	19	0	0	0	0	0	19	1	19	0	19	2	19	0
P.H.O.L. - Kingston	32	0	0	0	0	0	32	0	21	0	0	0	0	0	21	0	21	0	21	5	21	0
UHN / Mount Sinai Hospital	184	0	0	0	0	0	184	1	92	0	0	0	0	0	0	0	92	1	0	0	0	0
P.H.O.L. - Toronto	225	0	0	0	0	0	225	0	225	0	0	0	0	0	225	0	225	0	225	16	225	0
Sick Kids Hospital - Toronto	0	0	0	0	0	0	0	0	0	0	0	0	0	0	0	0	0	0	0	0	0	0
Sunnybrook & Women's College HSC	0	0	0	0	0	0	0	0	0	0	0	0	0	0	0	0	0	0	0	0	0	0
P.H.O.L. - Sault Ste. Marie	5	0	0	2	2	0	5	0	4	0	0	0	0	0	4	0	4	0	4	1	4	0
P.H.O.L. - Timmins	49	0	0	0	0	0	49	0	14	0	0	0	0	0	14	0	14	0	14	2	14	0
St. Joseph's - London	0	0	0	0	0	0	0	0	0	0	0	0	0	0	0	0	0	0	0	0	0	0
P.H.O.L. - London	51	0	0	0	0	0	51	0	41	0	0	0	0	0	41	0	41	0	41	5	41	0
P.H.O.L. - Orillia	10	0	0	0	0	0	10	0	10	0	0	0	0	0	10	0	10	0	10	0	10	0
P.H.O.L. - Thunder Bay	5	0	0	0	0	0	5	0	5	0	0	0	0	0	5	0	5	0	5	1	5	0
P.H.O.L. - Sudbury	15	0	0	0	0	0	15	0	14	0	0	0	0	0	14	0	14	0	14	1	14	0
P.H.O.L. - Hamilton	86	0	0	0	0	0	86	0	81	0	0	0	0	0	81	0	81	0	81	9	81	0
P.H.O.L. - Peterborough	22	0	0	0	0	0	18	0	16	0	0	0	0	0	16	0	16	0	16	4	16	0
St. Joseph's - Hamilton	288	0	0	0	0	0	288	0	288	0	0	0	0	0	288	1	288	0	288	32	0	0
Province of Ontario	1160	0	0	2	2	0	1156	2	857	0	0	0	0	0	765	2	857	1	765	78	477	0
Province of Manitoba	1859	0	0	0	0	0	1859	5	128	0	0	1	0	0	128	0	123	0	128	8	123	0
Province of Saskatchewan	105	0	0	0	0	0	105	0	63	0	0	0	0	0	63	3	63	0	63	8	63	0
Province of Alberta	5027	0	0	0	0	0	4903	0	4903	0	2	0	0	0	4903	5	4903	0	4903	342	4903	2
Prairies	6991	0	0	0	0	0	6867	5	5094	0	2	1	0	0	5094	8	5089	0	5094	358	5089	2
British Columbia	2164	0	0	0	0	0	2164	0	139	0	0	0	0	0	605	2	605	0	599	84	141	0
Yukon	129	0	0	0	1	1	129	0	N.A.	N.A.	N.A.	N.A.	N.A.	N.A.	N.A.	N.A.	N.A.	N.A.	N.A.	N.A.	N.A.	N.A.
Northwest Territories	28	0	0	0	0	0	28	0	28	0	0	0	0	0	28	0	28	1	28	8	28	0
Nunavut	6	0	0	0	0	0	6	0	6	0	0	0	0	0	6	1	6	0	6	2	4	0
Territories	163	0	0	0	1	1	163	0	34	0	0	0	0	0	34	1	34	1	34	10	32	0
CANADA	11209	0	0	2	3	1	11057	7	6643	0	2	1	0	0	7017	22	7104	2	6894	633	5985	2

Specimens from Yukon (YT), Northwest Territories (NT) and Nunavut (NU) are sent to reference laboratories in other provinces and reported results reflect specimens identified as originating from YT, NT or NU.

Results from British Columbia comprise of specimens from the following sites: BC Children's and Women's Hospital, Children's and Women's Hospital Laboratory, Fraser Health Medical Microbiology Laboratory, Island Health, Providence Health Care, Powell River Hospital, St. Paul's Hospital, Vancouver General Hospital, Victoria General Hospital, Victoria Coastal Health, BCCDC Public Health Laboratory, Interior Health Authority sites and Northern Health Authority sites.

Delays in the reporting of data may cause data to change retrospectively.

For BC, only data from subtyped influenza A specimens are included in the weekly number of influenza detections and so the sum of A(H1N1)pdm09, A(H3), and A(UnS) positive results may not equal the sum of total Flu A positive results.

Table 2: Respiratory Virus Detections/Isolations for the period August 23, 2020 - November 14, 2020 (Reporting Weeks 202035-202046)

Reporting Laboratory	Flu Tested	A(H1N1)pdm09 Positive	A(H3) Positive	A(UnS) Positive	Total Flu A Positive	Total Flu B Positive	RSV Tested	RSV Positive	PIV Tested	PIV 1 Positive	PIV 2 Positive	PIV 3 Positive	PIV 4 Positive	Other PIV Positive	Adeno Tested	Adeno Positive	hMPV Tested	hMPV Positive	Entero/Rhino Tested	Entero/Rhino Positive	Coron Tested	Coron Positive
Newfoundland	3628	0	0	0	0	0	3628	6	3628	0	0	0	0	0	3628	14	3628	1	3628	1294	N.A.	N.A.
Prince Edward Island	177	0	0	0	0	0	177	2	173	0	0	0	0	0	173	1	173	0	173	43	173	0
Nova Scotia	265	0	0	0	0	0	266	0	187	0	0	0	0	0	187	1	187	0	187	33	187	0
New Brunswick	355	0	0	0	0	0	355	0	201	0	0	0	0	0	192	4	192	0	192	28	147	0
Atlantic	4425	0	0	0	0	0	4426	8	4189	0	0	0	0	0	4180	20	4180	1	4180	1398	507	0
Région Nord-Est	365	0	0	0	0	0	269	0	0	0	0	0	0	0	0	0	0	0	N.A.	N.A.	0	0
Québec-Chaudière-Appalaches	222	0	0	0	0	0	258	0	185	0	0	0	0	0	187	11	182	0	N.A.	N.A.	165	0
Centre-du-Québec	160	0	0	0	0	0	165	0	73	0	0	0	0	0	71	3	73	0	N.A.	N.A.	70	0
Montréal-Laval	1605	0	0	0	0	0	1595	1	1156	0	0	0	0	0	1210	45	1146	0	N.A.	N.A.	1146	2
Ouest du Québec	237	0	0	0	0	0	222	0	0	0	0	0	0	0	0	0	0	0	N.A.	N.A.	0	0
Montérégie	0	0	0	0	0	0	0	0	0	0	0	0	0	0	0	0	0	0	N.A.	N.A.	0	0
Province of Québec	2589	0	0	0	0	0	2509	1	1414	0	0	0	0	0	1468	59	1401	0	N.A.	N.A.	1381	2
P.H.O.L. - Ottawa	154	0	0	0	0	0	154	1	149	0	0	0	0	0	149	0	149	0	149	6	149	0
CHEO - Ottawa	1335	0	0	1	1	1	932	4	228	0	0	0	0	0	228	2	228	0	228	25	228	0
P.H.O.L. - Kingston	286	0	0	0	0	0	286	0	267	0	0	0	0	0	267	2	264	0	267	80	264	0
UHN / Mount Sinai Hospital	293	0	0	0	0	0	293	1	263	0	1	1	1	1	0	0	223	4	20	3	40	0
P.H.O.L. - Toronto	1947	0	0	0	0	0	1945	1	1945	0	0	0	0	2	1946	5	1944	0	1945	104	1944	2
Sick Kids Hospital - Toronto	0	0	0	0	0	0	0	0	0	0	0	0	0	0	0	0	0	0	0	0	0	0
Sunnybrook & Women's College HSC	0	0	0	0	0	0	0	0	0	0	0	0	0	0	0	0	0	0	0	0	0	0
P.H.O.L. - Sault Ste. Marie	50	0	0	2	2	0	48	0	47	0	0	0	0	0	47	0	47	0	47	2	47	0
P.H.O.L. - Timmins	142	0	0	0	0	0	142	0	85	0	0	0	0	0	85	0	85	0	85	21	85	0
St. Joseph's - London	33	0	0	0	0	0	33	0	33	0	0	0	0	0	33	0	33	0	47	5	14	0
P.H.O.L. - London	544	0	0	1	1	1	540	0	514	0	0	0	0	2	514	2	510	0	514	61	510	0
P.H.O.L. - Orillia	83	0	0	0	0	0	81	0	79	0	0	0	0	0	79	0	79	0	79	8	79	0
P.H.O.L. - Thunder Bay	241	0	0	0	0	0	241	0	241	0	0	0	0	0	241	1	241	0	241	115	241	0
P.H.O.L. - Sudbury	110	0	0	0	0	0	110	0	109	0	0	0	0	0	109	0	109	0	109	11	109	0
P.H.O.L. - Hamilton	539	0	0	0	0	0	500	0	493	0	0	0	0	0	493	0	493	0	493	63	493	0
P.H.O.L. - Peterborough	214	0	0	1	1	0	172	0	166	0	0	0	0	0	166	0	166	0	166	17	166	0
St. Joseph's - Hamilton	1259	0	0	0	0	0	1259	0	1259	0	0	0	0	0	1259	2	1259	0	1259	146	0	0
Province of Ontario	7230	0	0	5	5	2	6736	7	5878	0	1	1	1	4	5616	14	5630	4	5649	667	4369	2
Manitoba	9297	0	0	0	0	0	9297	28	1115	0	1	1	0	0	1115	8	1037	0	1115	95	1037	1
Province of Saskatchewan	871	0	0	0	0	0	871	1	646	0	0	0	0	0	646	8	646	0	646	101	646	0
Province of Alberta	43116	0	0	1	1	0	42832	0	42832	2	14	1	3	0	42832	61	42832	9	42832	4251	42832	10
Prairies	53284	0	0	1	1	0	53000	29	44593	2	15	2	3	0	44593	77	44515	9	44593	4447	44515	11
British Columbia	17314	0	0	0	2	1	17314	3	3922	0	1	0	1	0	4388	26	4388	18	4312	572	2802	0
Yukon	2177	0	0	0	4	4	2203	4	N.A.	N.A.	N.A.	N.A.	N.A.	N.A.	N.A.	N.A.	N.A.	N.A.	N.A.	N.A.	N.A.	N.A.
Northwest Territories	460	0	0	0	0	0	460	0	460	0	0	0	1	0	460	3	460	1	460	168	460	0
Nunavut	924	0	0	0	0	0	924	0	924	3	1	0	0	0	924	15	924	5	924	260	156	0
Territories	3561	0	0	0	4	4	3587	4	1384	3	1	0	1	0	1384	18	1384	6	1384	428	616	0
CANADA	88403	0	0	6	12	7	87572	52	61380	5	18	3	6	4	61629	214	61698	38	60118	7512	54190	15

Specimens from YT, NT and NU are sent to reference laboratories in other provinces and reported results reflect specimens identified as originating from YT, NT or NU.

Results from British Columbia comprise of specimens from the following sites: BC Children's and Women's Hospital, Children's and Women's Hospital Laboratory, Fraser Health Medical Microbiology Laboratory, Island Health, Providence Health Care, Powell River Hospital, St. Paul's Hospital, Vancouver General Hospital, Victoria General Hospital, Victoria Coastal Health, BCCDC Public Health Laboratory, Interior Health Authority sites and Northern Health Authority sites.

Delays in the reporting of data may cause data to change retrospectively. Due to reporting delays, the sum of weekly report totals do not add up to cumulative totals.

For BC, only data from subtyped influenza A specimens are included in the weekly number of influenza detections and so the sum of A(H1N1)pdm09, A(H3), and A(UnS) positive results may not equal the sum of total Flu A positive results.

Figure 1: Number positive laboratory tests for other respiratory viruses by report week, Canada, 2020-21

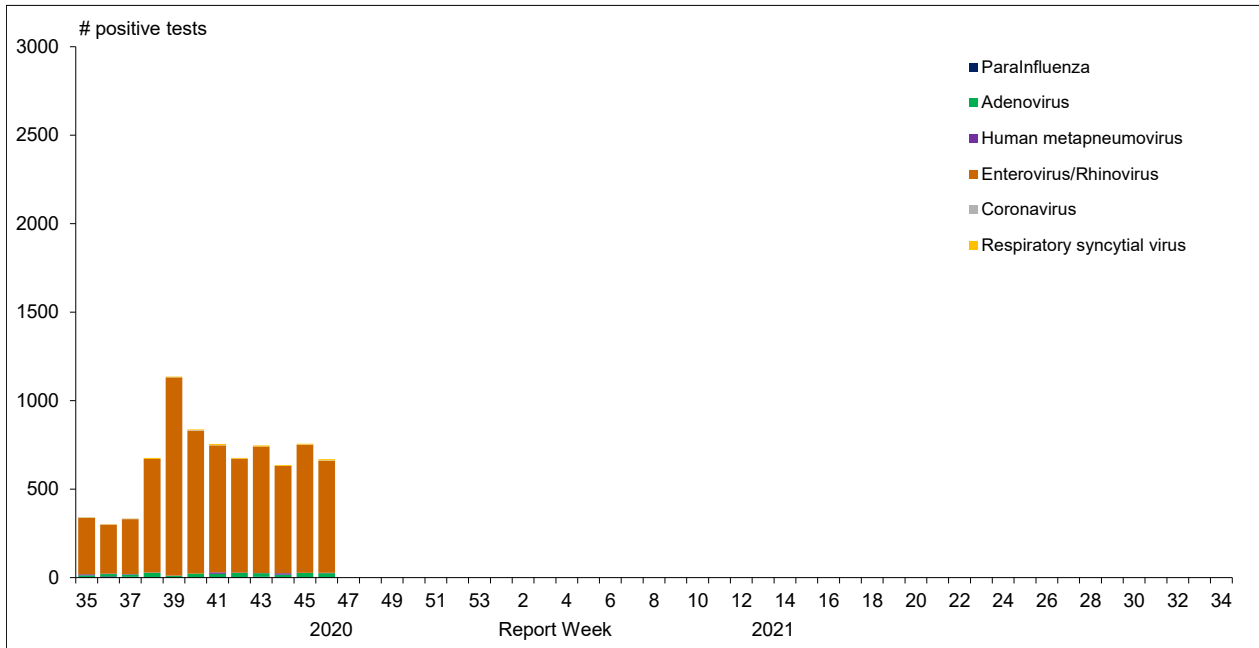


Figure 2 : Positive Influenza Tests (%) in Canada by Region by Week of Report

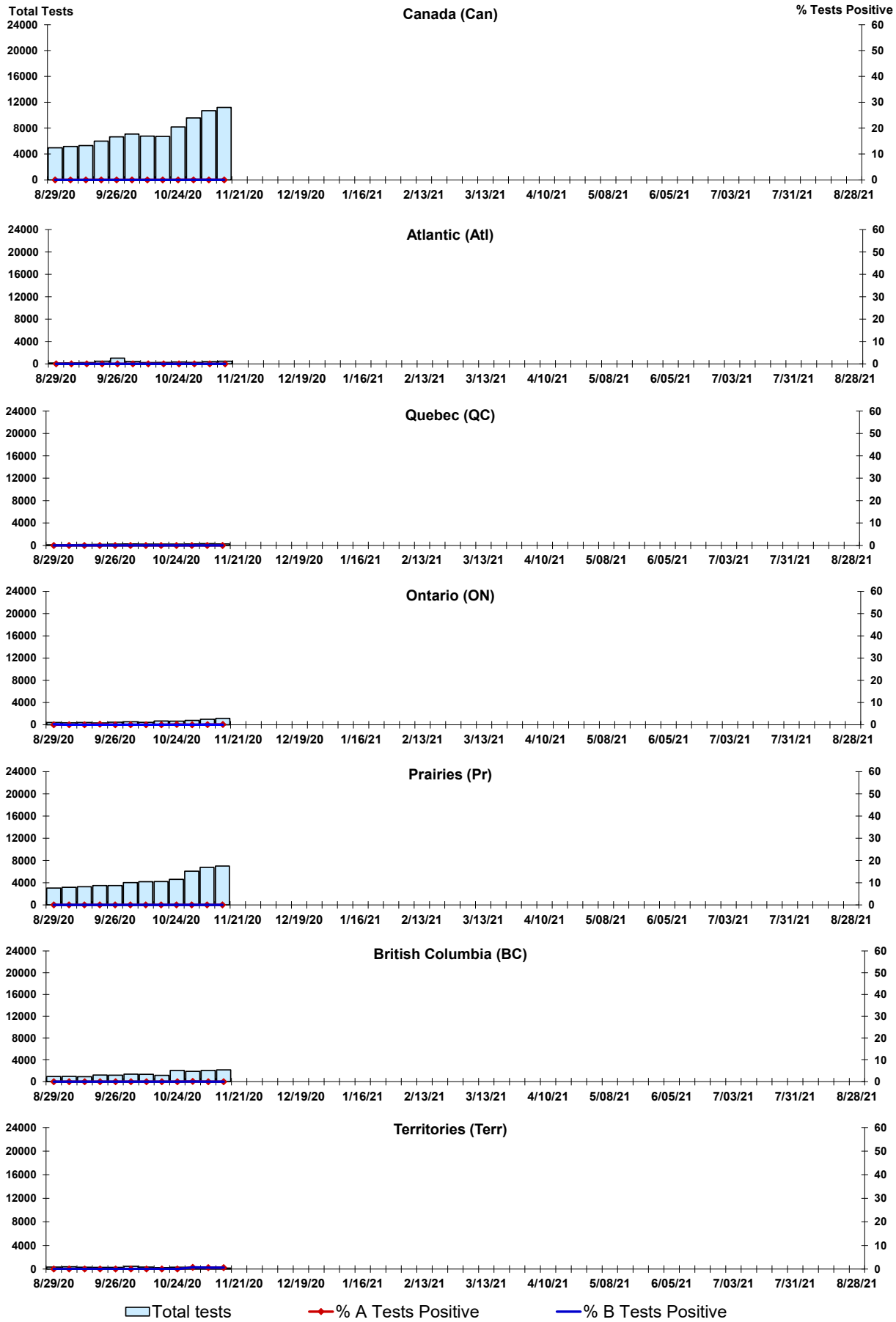


Figure 3: Positive Respiratory syncytial virus (RSV) Tests (%) in Canada by Region by Week of Report

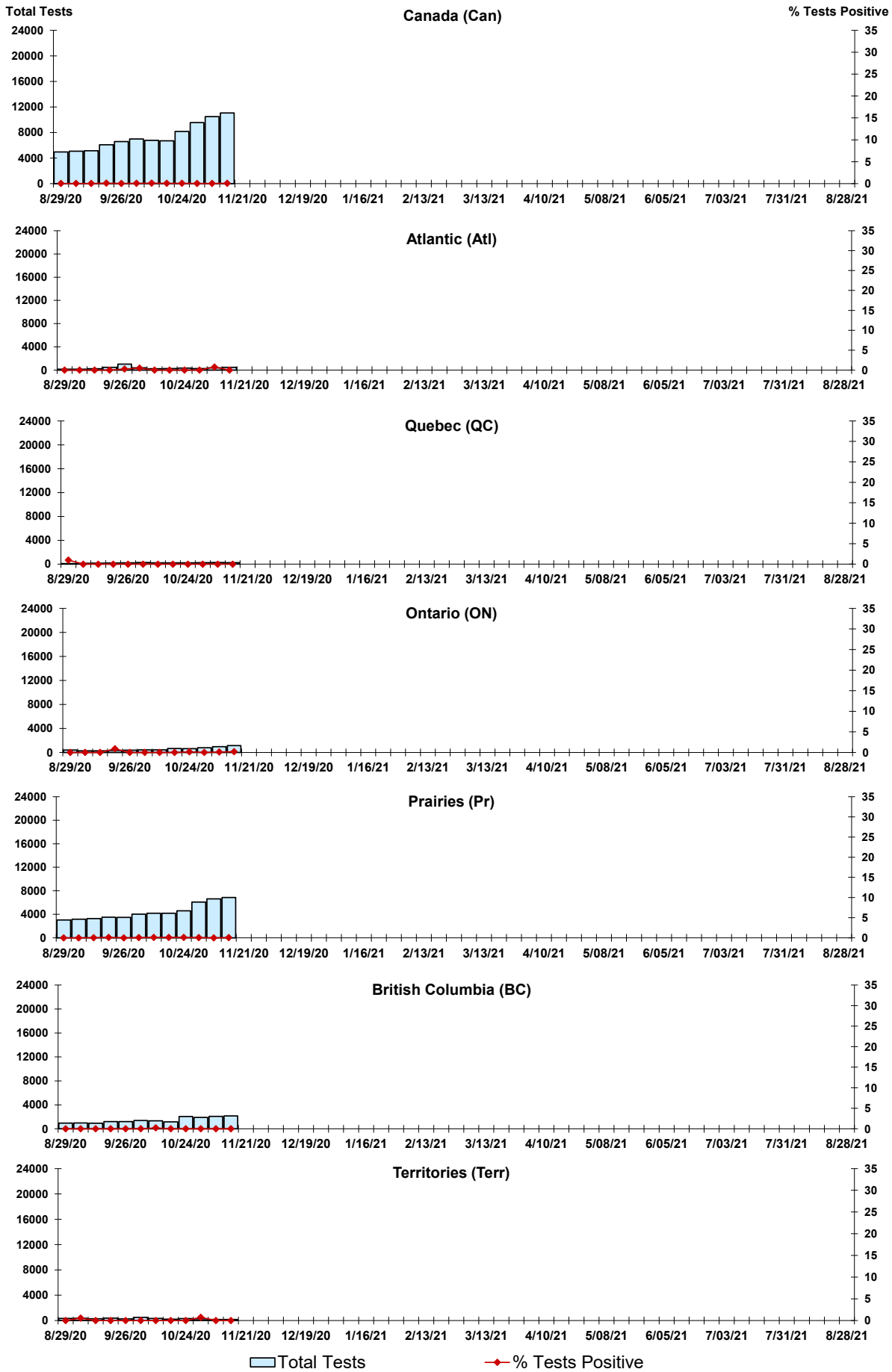


Figure 4: Positive Parainfluenza (PIV) Tests (%) in Canada by Region by Week of Report

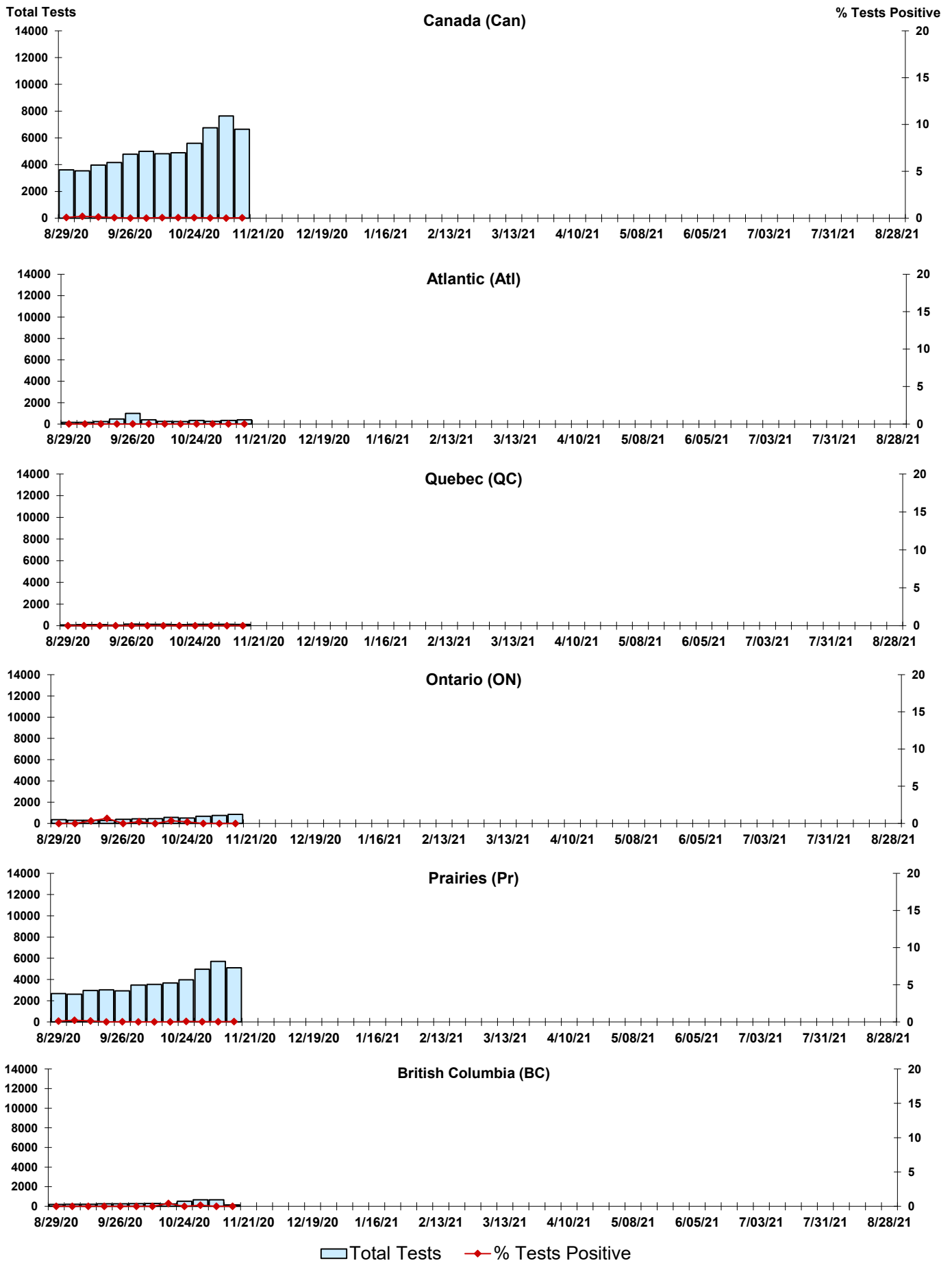


Figure 5: Positive Adenovirus (adeno) Tests (%) in Canada by Region by Week of Report

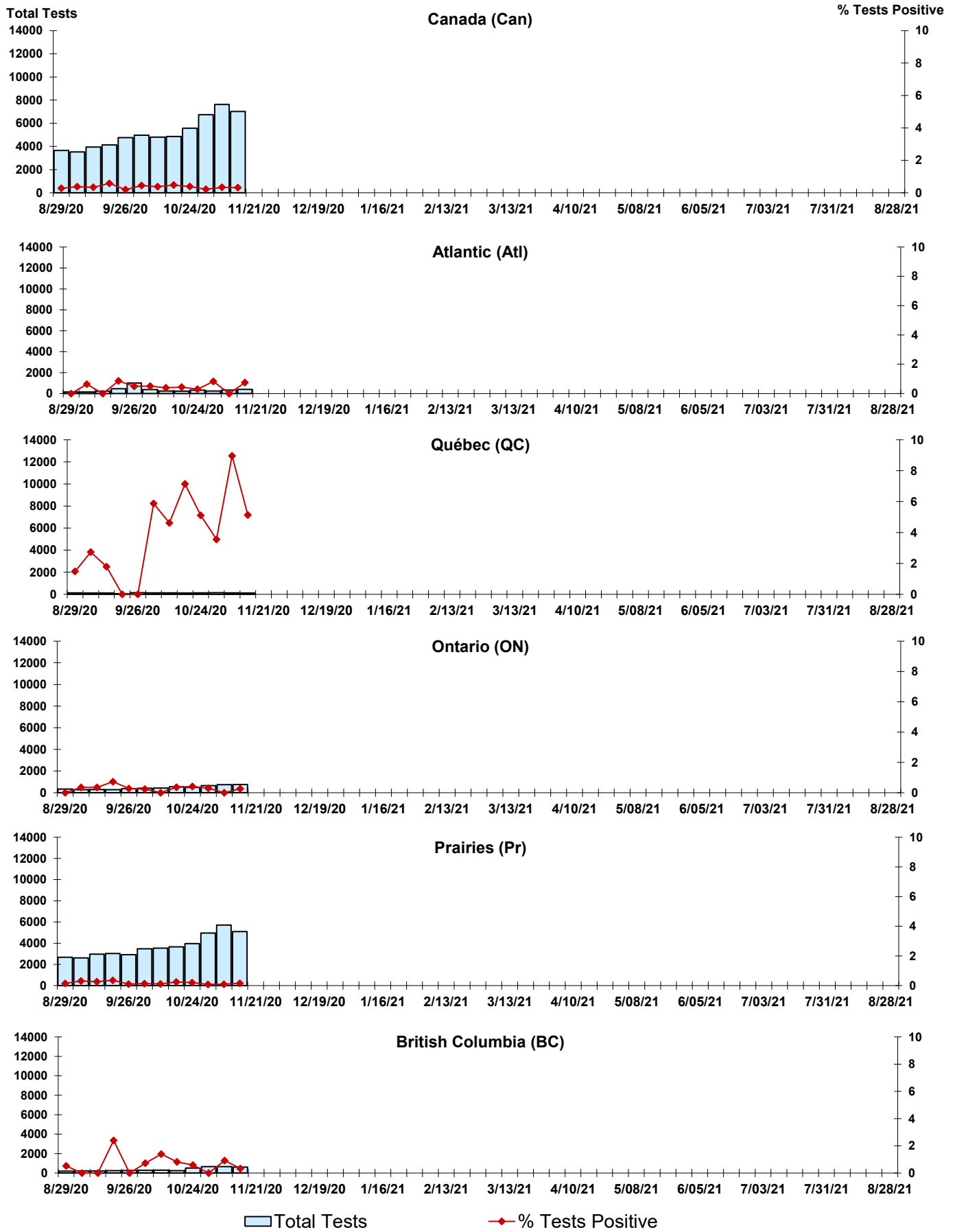


Figure 6: Positive human metapneumovirus (hMPV) Tests (%) in Canada by Region by Week of Report

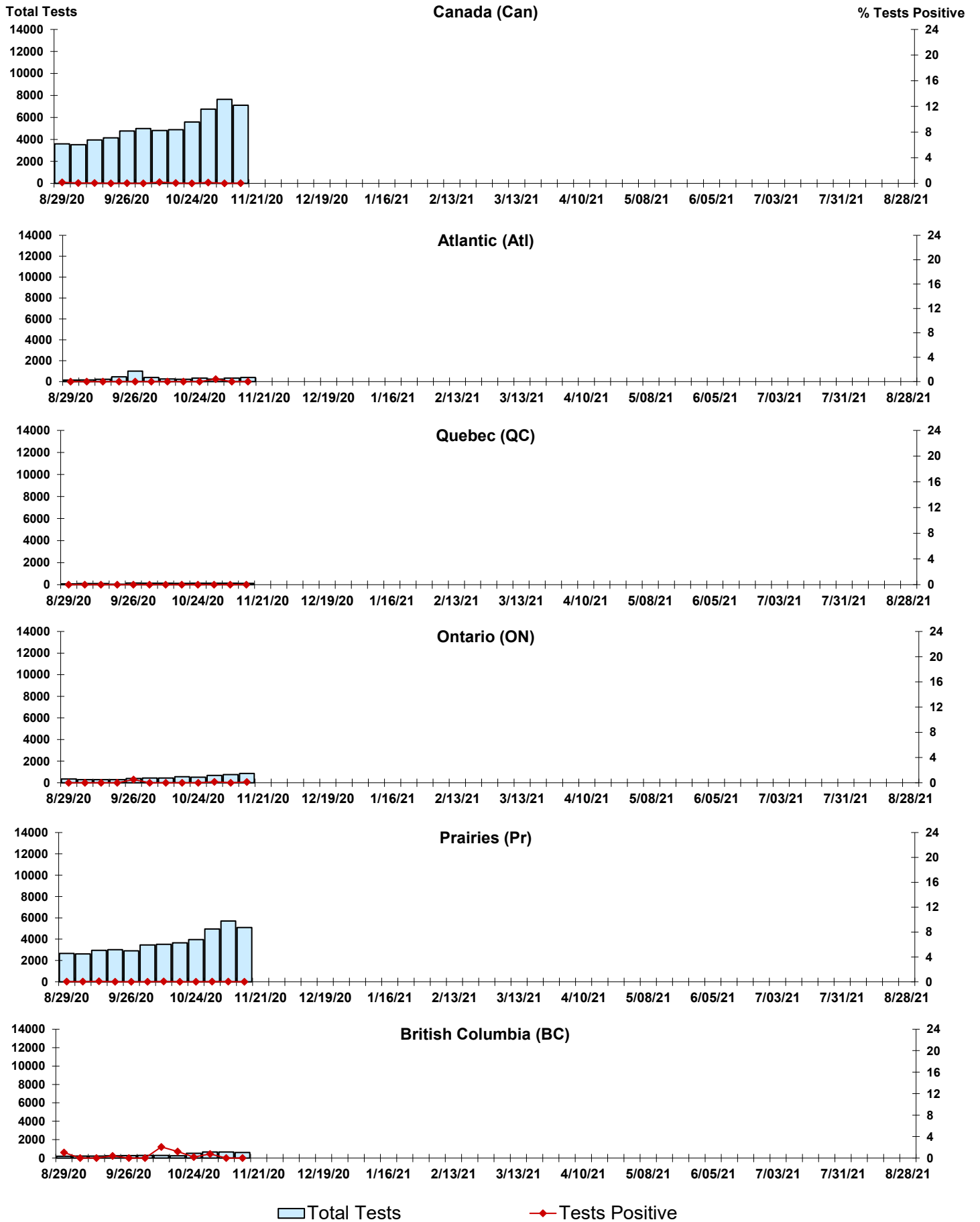


Figure 7: Positive Enterovirus/Rhinovirus (entero/rhino) Tests (%) in Canada by Region by Week of Report

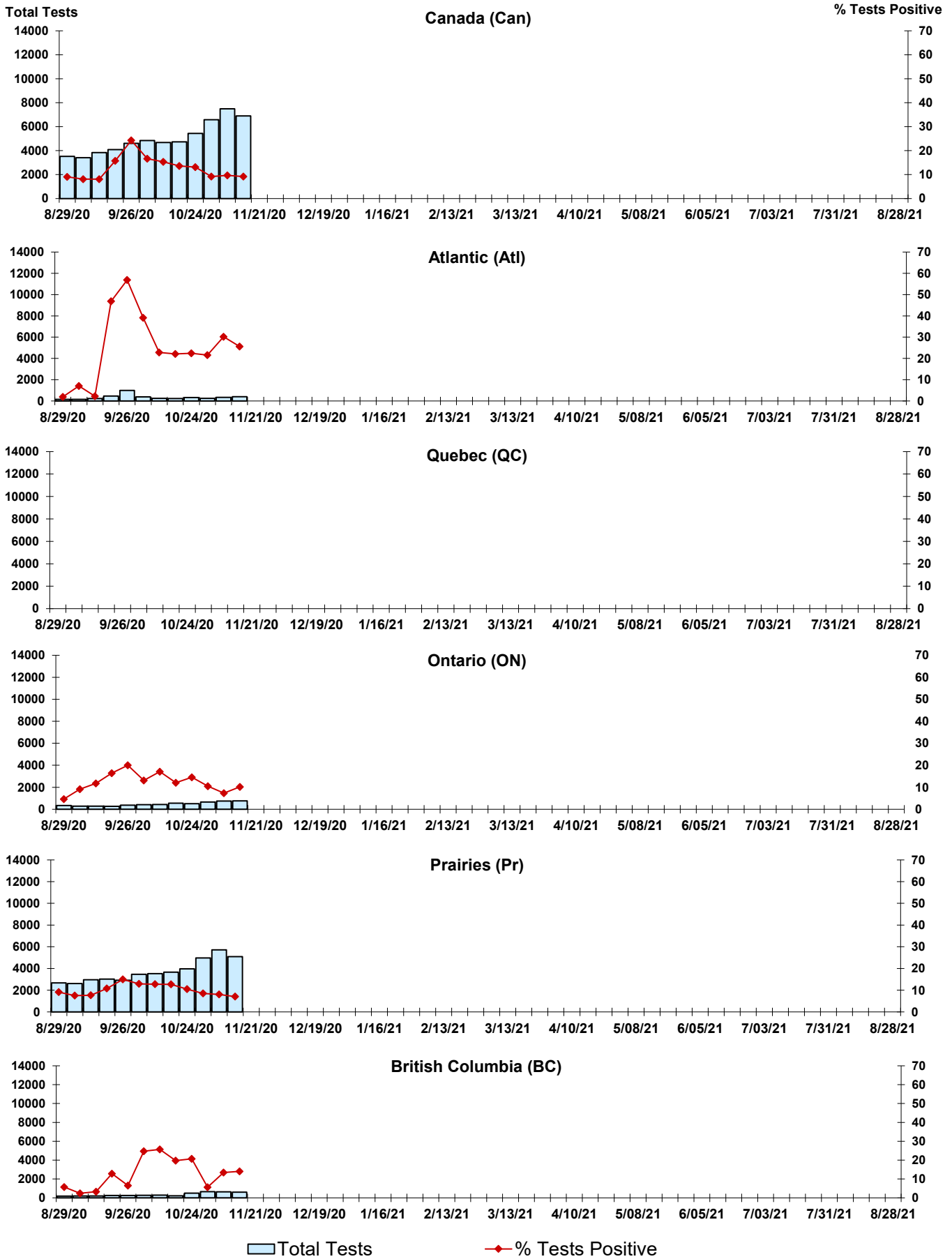
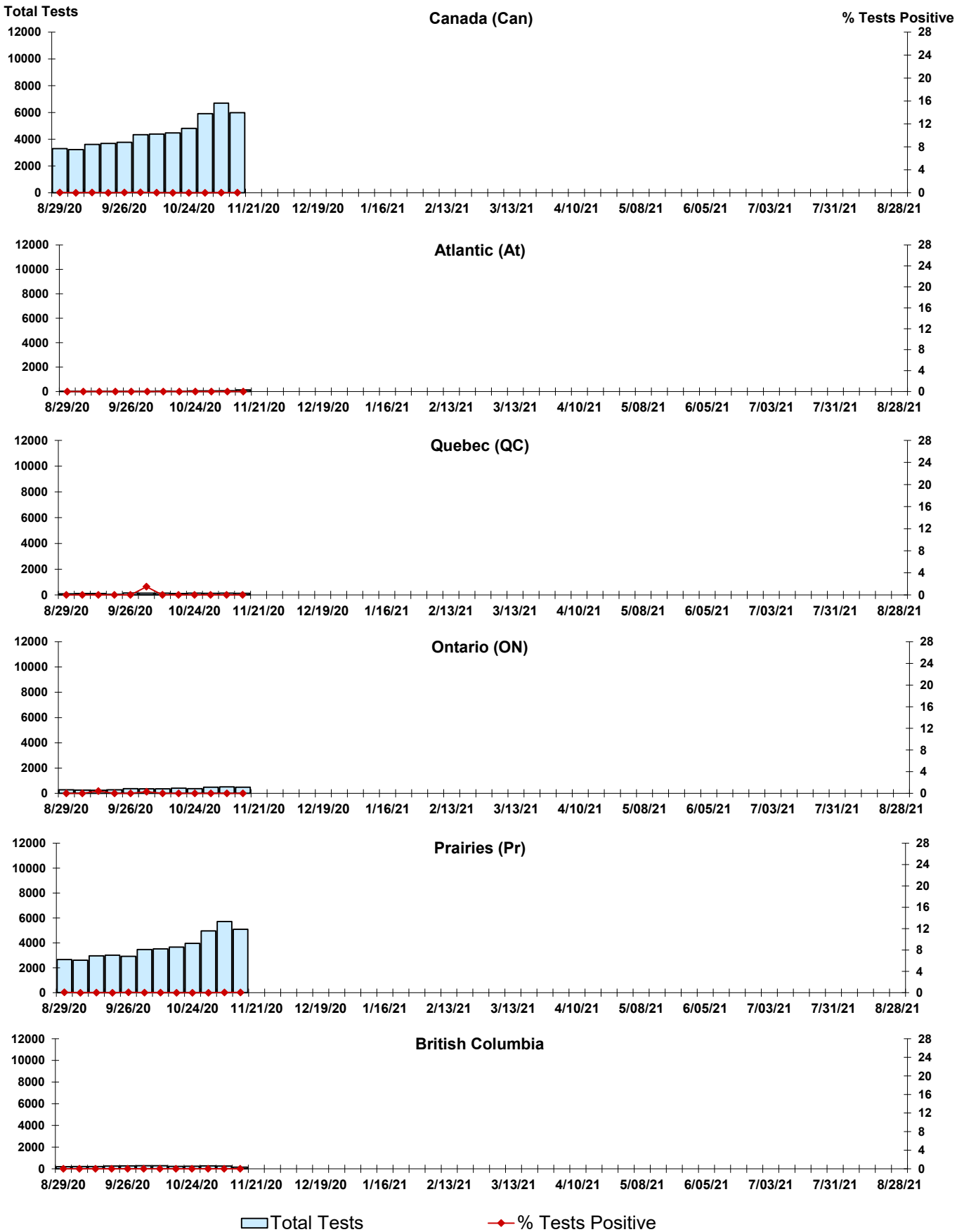


Figure 8: Positive Coronavirus (coron) Tests (%) in Canada by Region by Week of Report



Abbreviations:

A(H1N1)pdm09: Influenza A(H1N1)pdm09

A(H3): Influenza A(H3N2)

A (UnS): Influenza A (Unsubtyped)

Adeno: Adenovirus

CHEO: Children's Hospital of Eastern Ontario

Coron: Coronavirus

Entero: Enterovirus

hMPV: human metapneumovirus

HSC: Health Sciences Centre

N.A.: Not Applicable

P.H.L.: Public Health Laboratory

P.H.O.L.: Public Health Ontario Laboratory

PIV: Parainfluenza

Rhino: Rhinovirus

RSV: Respiratory syncytial virus

UHN: University Health Network

Notes:

Specimens from Yukon (YT), Northwest Territories (NT) and Nunavut (NU) are sent to reference laboratories in other provinces. Results reported for the Territories reflect the number of specimens that are identified as originating from YT, NT or NU.

Delays in the reporting of data may cause data to change retrospectively.

Due to reporting delays, the sum of weekly report totals do not add up to cumulative totals.