

Respiratory Virus Report, Week 47 - ending November 21, 2020

The Respiratory Virus Detection Surveillance System collects data from select laboratories across Canada on the number of tests performed and the number of tests positive for influenza and other respiratory viruses. Data are reported on a weekly basis year-round to the Centre for Immunization and Respiratory Infectious Diseases (CIRID), Public Health Agency of Canada. These data are also summarized in the weekly FluWatch report.

In this Respiratory Virus Report, the number of detections of coronavirus reflects only seasonal human coronaviruses, not the novel pandemic coronavirus (SARS-CoV2) that causes COVID-19. For information on COVID-19, see the [Coronavirus disease \(COVID-19\): Outbreak](#)

Table 1: Respiratory Virus Detections/Isolations for the week ending November 21, 2020 (Reporting Week 202047)

Reporting Laboratory	Flu Tested	A(H1N1)pdm09 Positive	A(H3) Positive	A(UnS) Positive	Total Flu A Positive	Total Flu B Positive	RSV Tested	RSV Positive	PIV Tested	PIV 1 Positive	PIV 2 Positive	PIV 3 Positive	PIV 4 Positive	Other PIV Positive	Adeno Tested	Adeno Positive	hMPV Tested	hMPV Positive	Entero/Rhino Tested	Entero/Rhino Positive	Coron Tested	Coron Positive
Newfoundland	297	0	0	0	0	0	297	0	297	0	0	0	0	0	297	1	297	0	297	64	N.A.	N.A.
Prince Edward Island	89	0	0	0	0	0	89	0	89	2	0	0	0	0	89	1	89	0	89	16	89	0
Nova Scotia	34	0	0	0	0	0	34	0	12	0	0	0	0	0	12	0	12	0	12	1	12	0
New Brunswick	31	0	0	0	0	0	31	0	15	0	0	0	0	0	15	0	15	0	15	7	15	0
Atlantic	451	0	0	0	0	0	451	0	413	2	0	0	0	0	413	2	413	0	413	88	116	0
Région Nord-Est	72	0	0	1	1	0	47	1	0	0	0	0	0	0	0	0	0	0	N.A.	N.A.	0	0
Québec-Chaudière-Appalaches	24	0	0	0	0	0	28	0	11	0	0	0	0	0	11	1	11	0	N.A.	N.A.	11	0
Centre-du-Québec	33	0	0	0	0	0	33	0	10	0	0	0	0	0	10	1	10	0	N.A.	N.A.	10	0
Montréal-Laval	141	0	0	0	0	0	138	0	84	0	0	0	0	0	84	4	84	0	N.A.	N.A.	84	0
Ouest du Québec	23	0	0	0	0	0	21	0	0	0	0	0	0	0	0	0	0	0	N.A.	N.A.	0	0
Montérégie	0	0	0	0	0	0	0	0	0	0	0	0	0	0	0	0	0	0	N.A.	N.A.	0	0
Province of Québec	293	0	0	1	1	0	267	1	105	0	0	0	0	0	105	6	105	0	N.A.	N.A.	105	0
P.H.O.L. - Ottawa	25	0	0	0	0	0	23	0	21	0	0	0	0	0	21	0	21	0	21	1	21	0
CHEO - Ottawa	149	0	0	0	0	0	149	0	14	0	0	0	0	0	14	0	14	0	14	0	14	0
P.H.O.L. - Kingston	34	0	0	0	0	0	34	0	21	0	0	0	0	0	21	0	21	0	21	4	21	0
UHN / Mount Sinai Hospital	381	0	0	0	0	1	381	0	267	0	0	0	0	0	0	0	267	0	267	5	0	0
P.H.O.L. - Toronto	147	0	0	0	0	0	147	0	147	0	0	0	0	0	147	1	147	0	147	7	147	0
Sick Kids Hospital - Toronto	0	0	0	0	0	0	0	0	0	0	0	0	0	0	0	0	0	0	0	0	0	0
Sunnybrook & Women's College HSC	0	0	0	0	0	0	0	0	0	0	0	0	0	0	0	0	0	0	0	0	0	0
P.H.O.L. - Sault Ste. Marie	6	0	0	0	0	0	6	0	6	0	0	0	0	0	6	0	6	0	6	1	6	0
P.H.O.L. - Timmins	37	0	0	0	0	0	37	0	7	0	0	0	0	0	7	0	7	0	7	0	7	0
St. Joseph's - London	185	0	0	0	0	0	185	0	22	0	0	0	0	0	22	0	22	0	44	3	22	0
P.H.O.L. - London	102	0	0	0	0	0	102	0	72	0	0	0	0	0	72	0	72	0	72	11	72	0
P.H.O.L. - Orillia	12	0	0	0	0	0	12	0	12	0	0	0	0	0	12	0	12	0	12	0	12	0
P.H.O.L. - Thunder Bay	5	0	0	0	0	0	5	0	5	0	0	0	0	0	6	0	5	0	5	0	5	0
P.H.O.L. - Sudbury	14	0	0	0	0	0	14	0	14	0	0	0	0	0	14	0	14	0	14	0	14	0
P.H.O.L. - Hamilton	69	0	0	0	0	0	66	0	57	0	0	0	0	0	57	1	57	0	57	9	57	0
P.H.O.L. - Peterborough	12	0	0	0	0	0	12	0	11	0	0	0	0	0	11	0	11	0	11	1	11	0
St. Joseph's - Hamilton	324	0	0	0	0	0	324	0	324	0	0	0	0	0	324	1	324	0	324	38	0	0
Province of Ontario	1502	0	0	0	0	1	1497	0	1000	0	0	0	0	0	734	3	1000	0	1022	80	409	0
Province of Manitoba	2046	0	0	0	0	0	2046	3	106	0	0	0	0	0	106	0	105	0	106	3	105	0
Province of Saskatchewan	111	0	0	0	0	0	111	0	80	0	0	0	0	0	80	0	80	0	80	4	80	0
Province of Alberta	4679	0	0	0	0	0	4661	0	4661	0	2	0	0	0	4661	5	4661	1	4661	313	4661	3
Prairies	6836	0	0	0	0	0	6818	3	4847	0	2	0	0	0	4847	5	4846	1	4847	320	4846	3
British Columbia	2532	0	0	1	1	1	2532	0	590	0	0	0	0	0	590	4	590	1	571	81	202	0
Yukon	251	0	0	0	0	0	251	0	N.A.	N.A.	N.A.	N.A.	N.A.	N.A.	N.A.	N.A.	N.A.	N.A.	N.A.	N.A.	N.A.	N.A.
Northwest Territories	12	0	0	0	0	0	12	0	12	0	0	0	0	0	12	0	12	0	12	2	12	0
Nunavut	54	0	0	0	0	0	54	0	54	0	0	0	0	0	54	2	54	0	54	4	3	0
Territories	317	0	0	0	0	0	317	0	66	0	0	0	0	0	66	2	66	0	66	6	15	0
CANADA	11931	0	0	2	2	2	11882	4	7021	2	2	0	0	0	6755	22	7020	2	6919	575	5693	3

Specimens from Yukon (YT), Northwest Territories (NT) and Nunavut (NU) are sent to reference laboratories in other provinces and reported results reflect specimens identified as originating from YT, NT or NU.

Results from British Columbia comprise of specimens from the following sites: BC Children's and Women's Hospital, Children's and Women's Hospital Laboratory, Fraser Health Medical Microbiology Laboratory, Island Health, Providence Health Care, Powell River Hospital, St. Paul's Hospital, Vancouver General Hospital, Victoria General Hospital, Victoria Coastal Health, BCCDC Public Health Laboratory, Interior Health Authority sites and Northern Health Authority sites.

Delays in the reporting of data may cause data to change retrospectively.

For BC, only data from subtyped influenza A specimens are included in the weekly number of influenza detections and so the sum of A(H1N1)pdm09, A(H3), and A(UnS) positive results may not equal the sum of total Flu A positive results.

Table 2: Respiratory Virus Detections/Isolations for the period August 23, 2020 - November 21, 2020 (Reporting Weeks 202035-202047)

Reporting Laboratory	Flu Tested	A(H1N1)pdm09 Positive	A(H3) Positive	A(UnS) Positive	Total Flu A Positive	Total Flu B Positive	RSV Tested	RSV Positive	PIV Tested	PIV 1 Positive	PIV 2 Positive	PIV 3 Positive	PIV 4 Positive	Other PIV Positive	Adeno Tested	Adeno Positive	hMPV Tested	hMPV Positive	Entero/Rhino Tested	Entero/Rhino Positive	Coron Tested	Coron Positive
Newfoundland	3925	0	0	0	0	0	3925	6	3925	0	0	0	0	0	3925	15	3925	1	3925	1358	N.A.	N.A.
Prince Edward Island	266	0	0	0	0	0	266	2	262	2	0	0	0	0	262	2	262	0	262	59	262	0
Nova Scotia	299	0	0	0	0	0	300	0	199	0	0	0	0	0	199	1	199	0	199	34	199	0
New Brunswick	386	0	0	0	0	0	386	0	216	0	0	0	0	0	207	4	207	0	207	35	162	0
Atlantic	4876	0	0	0	0	0	4877	8	4602	2	0	0	0	0	4593	22	4593	1	4593	1486	623	0
Région Nord-Est	437	0	0	1	1	0	316	1	0	0	0	0	0	0	0	0	0	0	N.A.	N.A.	0	0
Québec-Chaudière-Appalaches	246	0	0	0	0	0	286	0	196	0	0	0	0	0	198	12	193	0	N.A.	N.A.	176	0
Centre-du-Québec	193	0	0	0	0	0	198	0	83	0	0	0	0	0	81	4	83	0	N.A.	N.A.	80	0
Montréal-Laval	1746	0	0	0	0	0	1733	1	1240	0	0	0	0	0	1294	49	1230	0	N.A.	N.A.	1230	2
Ouest du Québec	260	0	0	0	0	0	243	0	0	0	0	0	0	0	0	0	0	0	N.A.	N.A.	0	0
Montérégie	0	0	0	0	0	0	0	0	0	0	0	0	0	0	0	0	0	0	N.A.	N.A.	0	0
Province of Québec	2882	0	0	1	1	0	2776	2	1519	0	0	0	0	0	1573	65	1506	0	N.A.	N.A.	1486	2
P.H.O.L. - Ottawa	179	0	0	0	0	0	177	1	170	0	0	0	0	0	170	0	170	0	170	7	170	0
CHEO - Ottawa	1484	0	0	1	1	1	1081	4	242	0	0	0	0	0	242	2	242	0	242	25	242	0
P.H.O.L. - Kingston	320	0	0	0	0	0	320	0	288	0	0	0	0	0	288	2	285	0	288	84	285	0
UHN / Mount Sinai Hospital	674	0	0	0	0	1	674	1	530	0	1	1	1	0	0	0	490	4	287	8	40	0
P.H.O.L. - Toronto	2092	0	0	0	0	0	2090	1	2090	0	0	0	0	2	2091	6	2089	0	2090	111	2089	2
Sick Kids Hospital - Toronto	0	0	0	0	0	0	0	0	0	0	0	0	0	0	0	0	0	0	0	0	0	0
Sunnybrook & Women's College HSC	0	0	0	0	0	0	0	0	0	0	0	0	0	0	0	0	0	0	0	0	0	0
P.H.O.L. - Sault Ste. Marie	56	0	0	2	2	0	54	0	53	0	0	0	0	0	53	0	53	0	53	3	53	0
P.H.O.L. - Timmins	179	0	0	0	0	0	179	0	92	0	0	0	0	0	92	0	92	0	92	21	92	0
St. Joseph's - London	218	0	0	0	0	0	218	0	55	0	0	0	0	0	55	0	55	0	91	8	36	0
P.H.O.L. - London	646	0	0	1	1	1	642	0	587	0	0	0	0	2	587	2	583	0	587	72	583	0
P.H.O.L. - Orillia	95	0	0	0	0	0	93	0	91	0	0	0	0	0	91	0	91	0	91	8	91	0
P.H.O.L. - Thunder Bay	246	0	0	0	0	0	246	0	246	0	0	0	0	0	247	1	246	0	246	115	246	0
P.H.O.L. - Sudbury	124	0	0	0	0	0	124	0	123	0	0	0	0	0	123	0	123	0	123	11	123	0
P.H.O.L. - Hamilton	608	0	0	0	0	0	566	0	550	0	0	0	0	0	550	1	550	0	550	72	550	0
P.H.O.L. - Peterborough	226	0	0	1	1	0	184	0	177	0	0	0	0	0	177	0	177	0	177	18	177	0
St. Joseph's - Hamilton	1583	0	0	0	0	0	1583	0	1583	0	0	0	0	0	1583	3	1583	0	1583	184	0	0
Province of Ontario	8730	0	0	5	5	3	8231	7	6877	0	1	1	1	4	6349	17	6829	4	6670	747	4777	2
Manitoba	11343	0	0	0	0	0	11343	31	1221	0	1	1	0	0	1221	8	1142	0	1221	98	1142	1
Province of Saskatchewan	1024	0	0	0	0	0	1024	1	726	0	0	0	0	0	726	8	726	0	726	105	726	0
Province of Alberta	48276	0	0	1	1	0	47973	0	47973	2	16	1	3	0	47973	67	47973	10	47973	4592	47973	13
Prairies	60643	0	0	1	1	0	60340	32	49920	2	17	2	3	0	49920	83	49841	10	49920	4795	49841	14
British Columbia	19976	0	0	3	3	2	19976	3	4607	0	1	0	1	0	5073	30	5073	20	4978	661	3099	0
Yukon	2469	0	0	4	4	4	2495	4	N.A.	N.A.	N.A.	N.A.	N.A.	N.A.	N.A.	N.A.	N.A.	N.A.	N.A.	N.A.	N.A.	N.A.
Northwest Territories	486	0	0	0	0	0	486	0	486	0	0	0	1	0	486	3	486	1	486	175	486	0
Nunavut	978	0	0	0	0	0	978	0	978	3	1	0	0	0	978	17	978	5	978	264	159	0
Territories	3933	0	0	4	4	4	3959	4	1464	3	1	0	1	0	1464	20	1464	6	1464	439	645	0
CANADA	101040	0	0	14	14	9	100159	56	68989	7	20	3	6	4	68972	237	69306	41	67625	8128	60471	18

Specimens from YT, NT and NU are sent to reference laboratories in other provinces and reported results reflect specimens identified as originating from YT, NT or NU.

Results from British Columbia comprise of specimens from the following sites: BC Children's and Women's Hospital, Children's and Women's Hospital Laboratory, Fraser Health Medical Microbiology Laboratory, Island Health, Providence Health Care, Powell River Hospital, St. Paul's Hospital, Vancouver General Hospital, Victoria General Hospital, Victoria Coastal Health, BCCDC Public Health Laboratory, Interior Health Authority sites and Northern Health Authority sites.

Delays in the reporting of data may cause data to change retrospectively. Due to reporting delays, the sum of weekly report totals do not add up to cumulative totals.

For BC, only data from subtyped influenza A specimens are included in the weekly number of influenza detections and so the sum of A(H1N1)pdm09, A(H3), and A(UnS) positive results may not equal the sum of total Flu A positive results.

Figure 1: Number positive laboratory tests for other respiratory viruses by report week, Canada, 2020-21

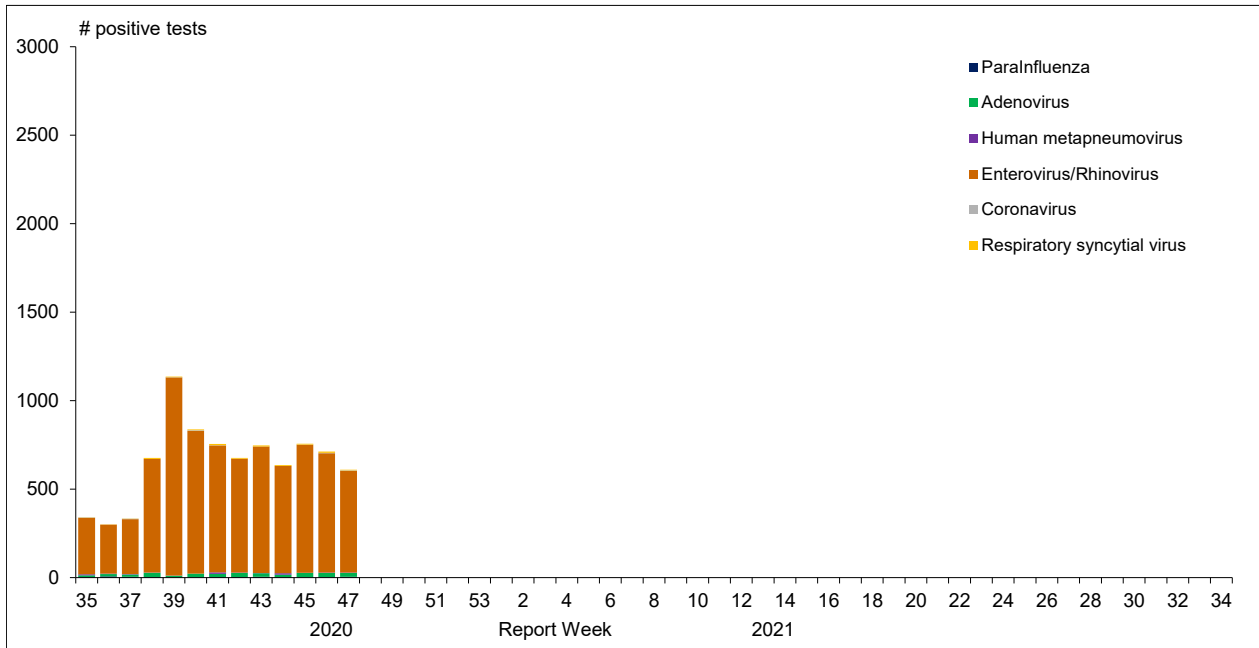


Figure 2 : Positive Influenza Tests (%) in Canada by Region by Week of Report

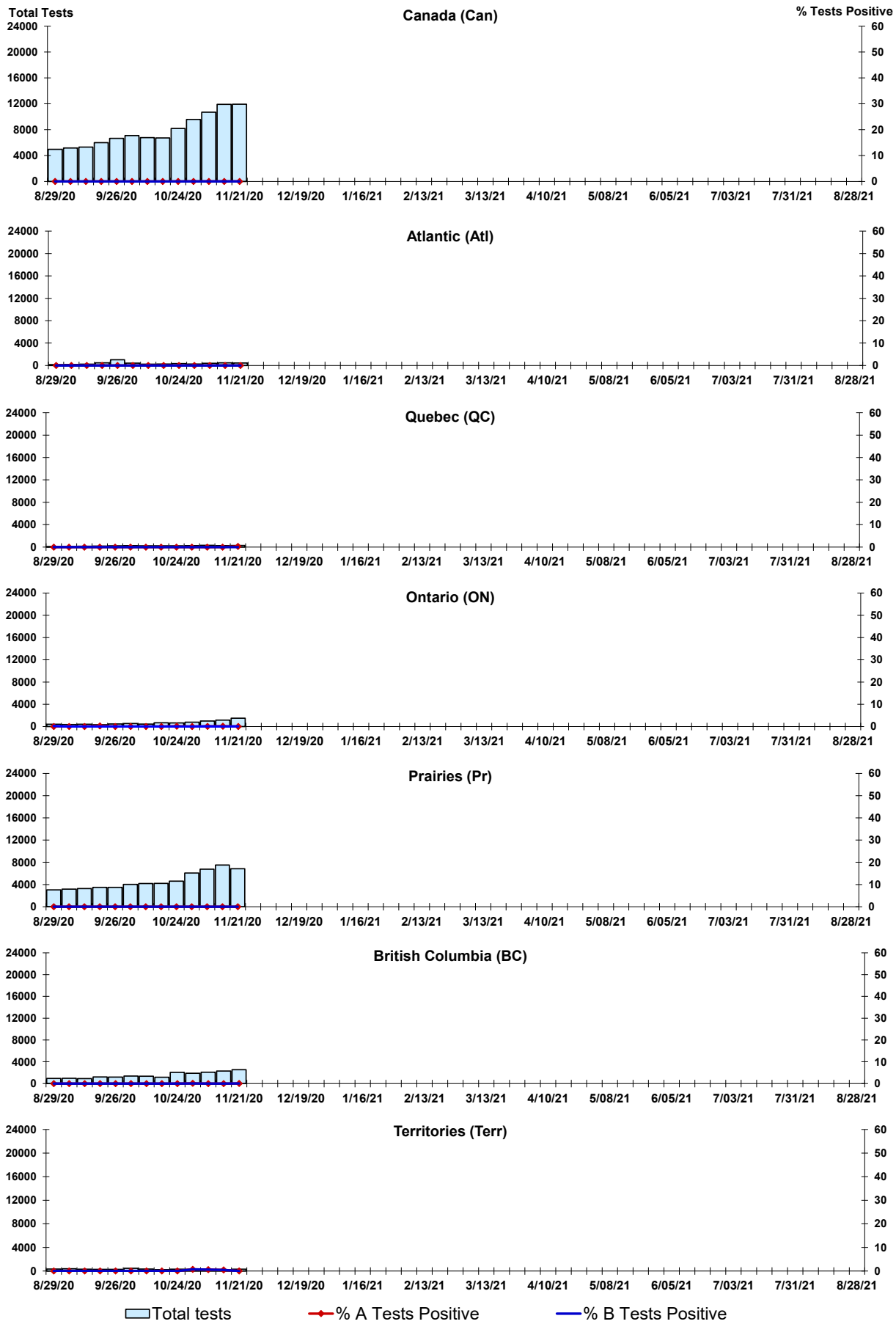


Figure 3: Positive Respiratory syncytial virus (RSV) Tests (%) in Canada by Region by Week of Report

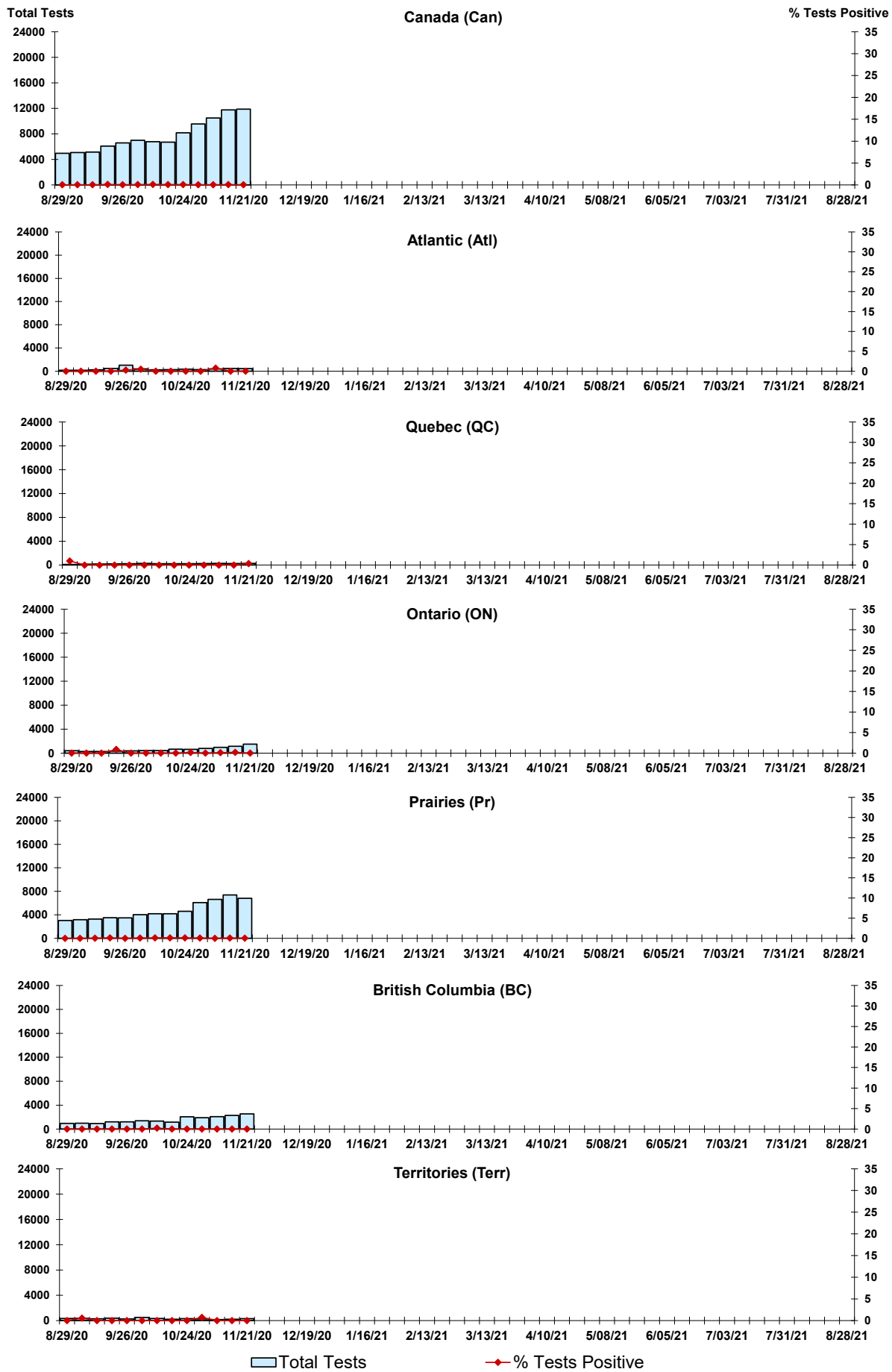


Figure 4: Positive Parainfluenza (PIV) Tests (%) in Canada by Region by Week of Report

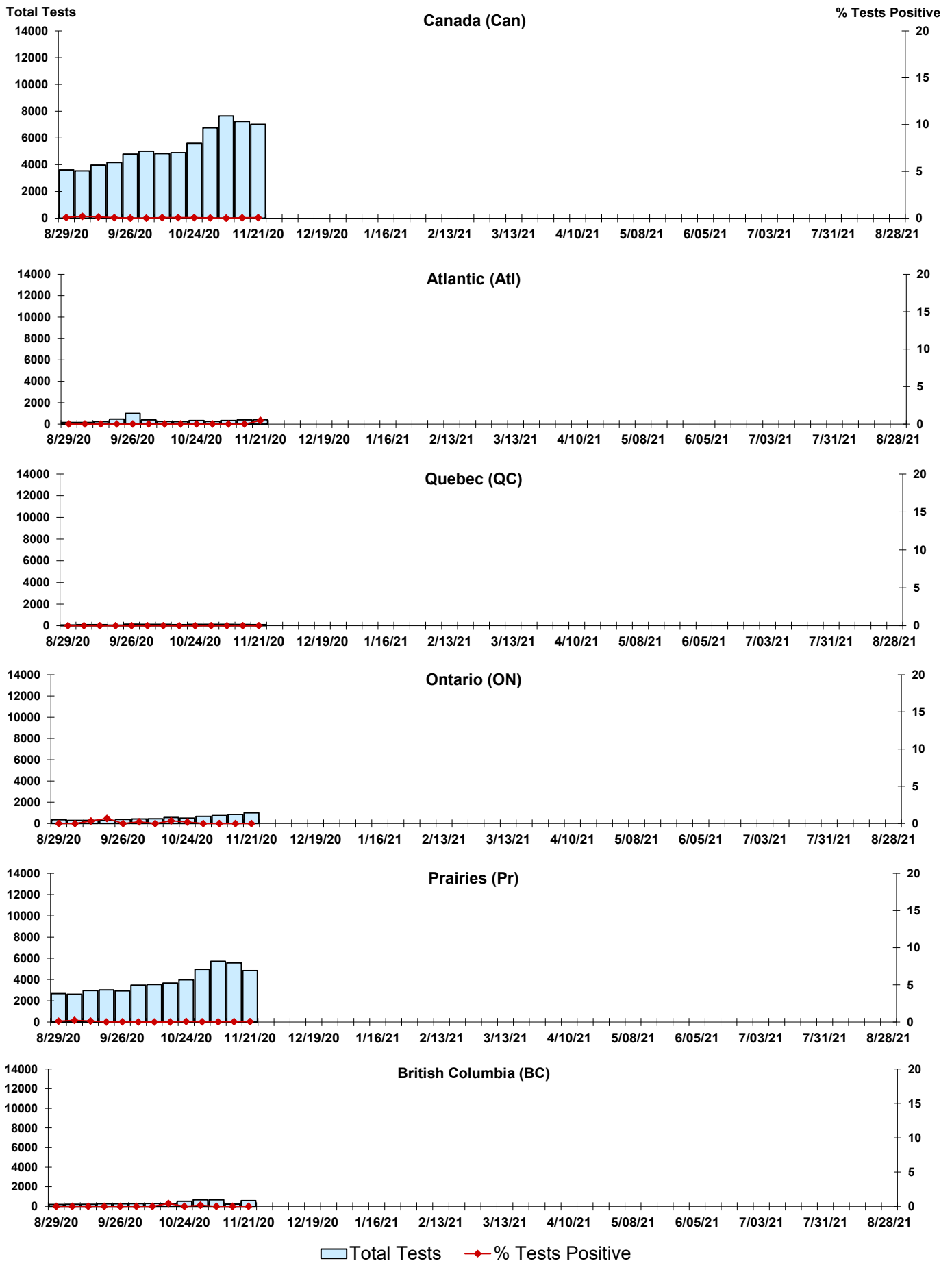


Figure 5: Positive Adenovirus (adeno) Tests (%) in Canada by Region by Week of Report

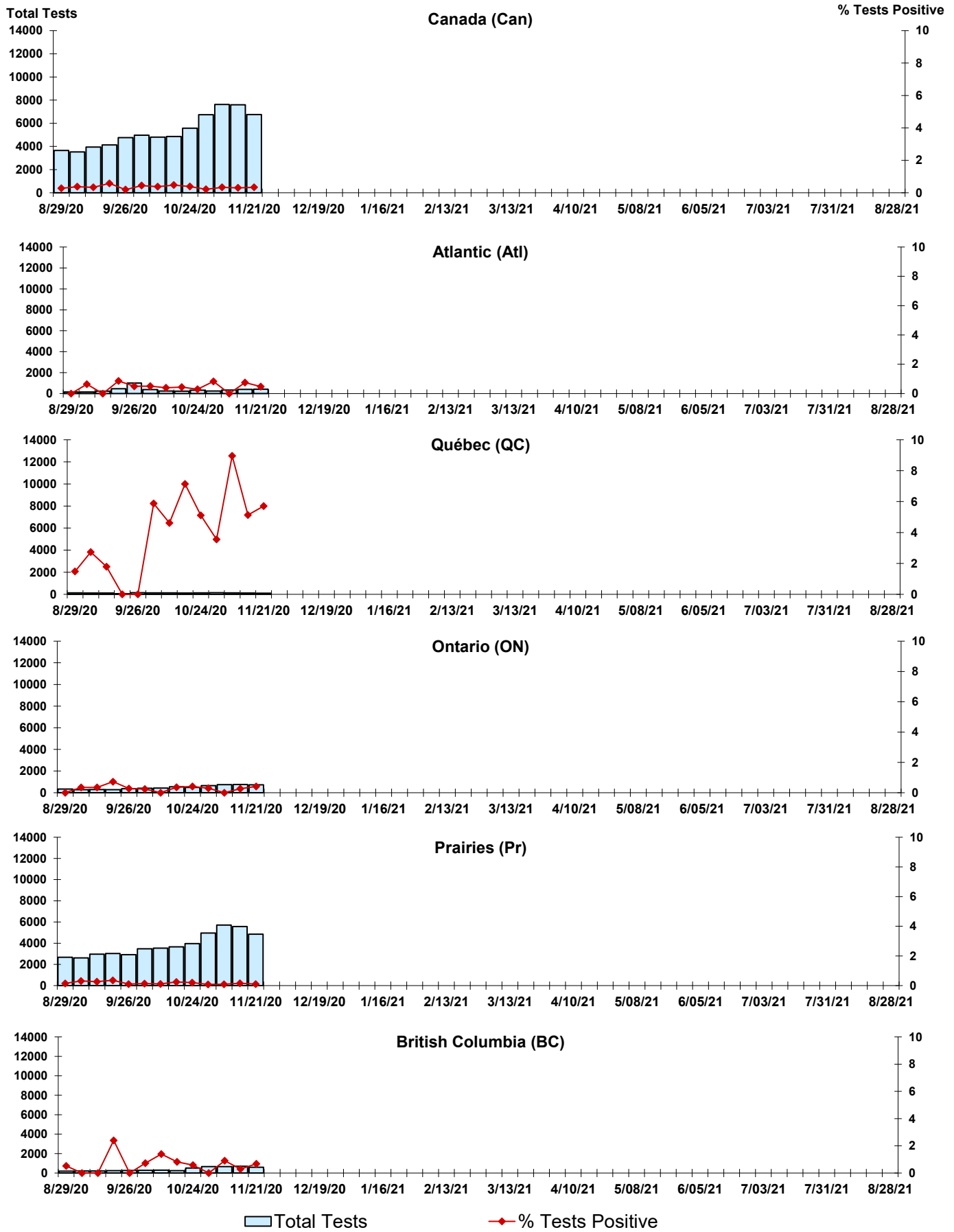
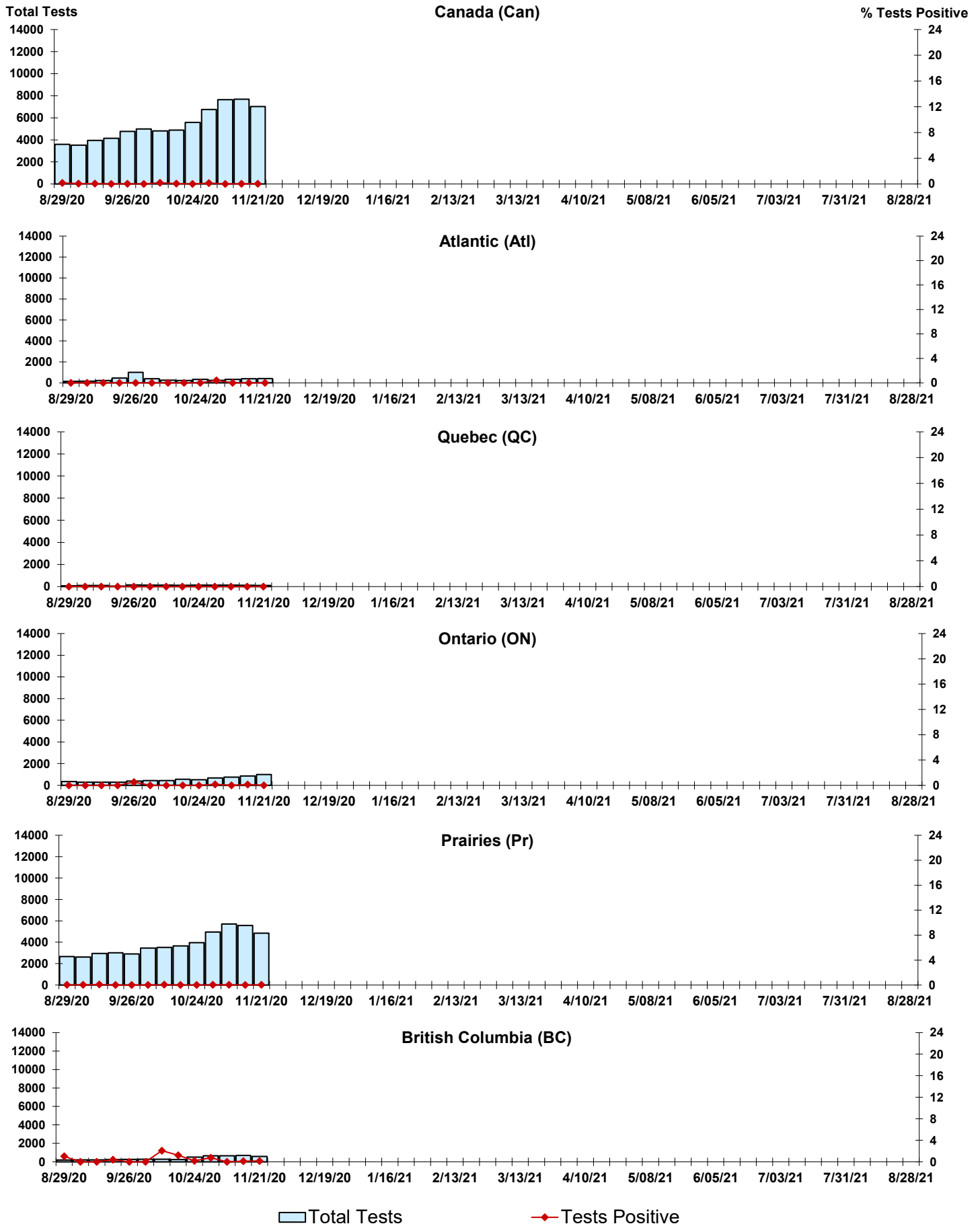


Figure 6: Positive human metapneumovirus (hMPV) Tests (%) in Canada by Region by Week of Report



Legend: Total Tests (light blue bar), Tests Positive (red line with diamond)

Figure 7: Positive Enterovirus/Rhinovirus (entero/rhino) Tests (%) in Canada by Region by Week of Report

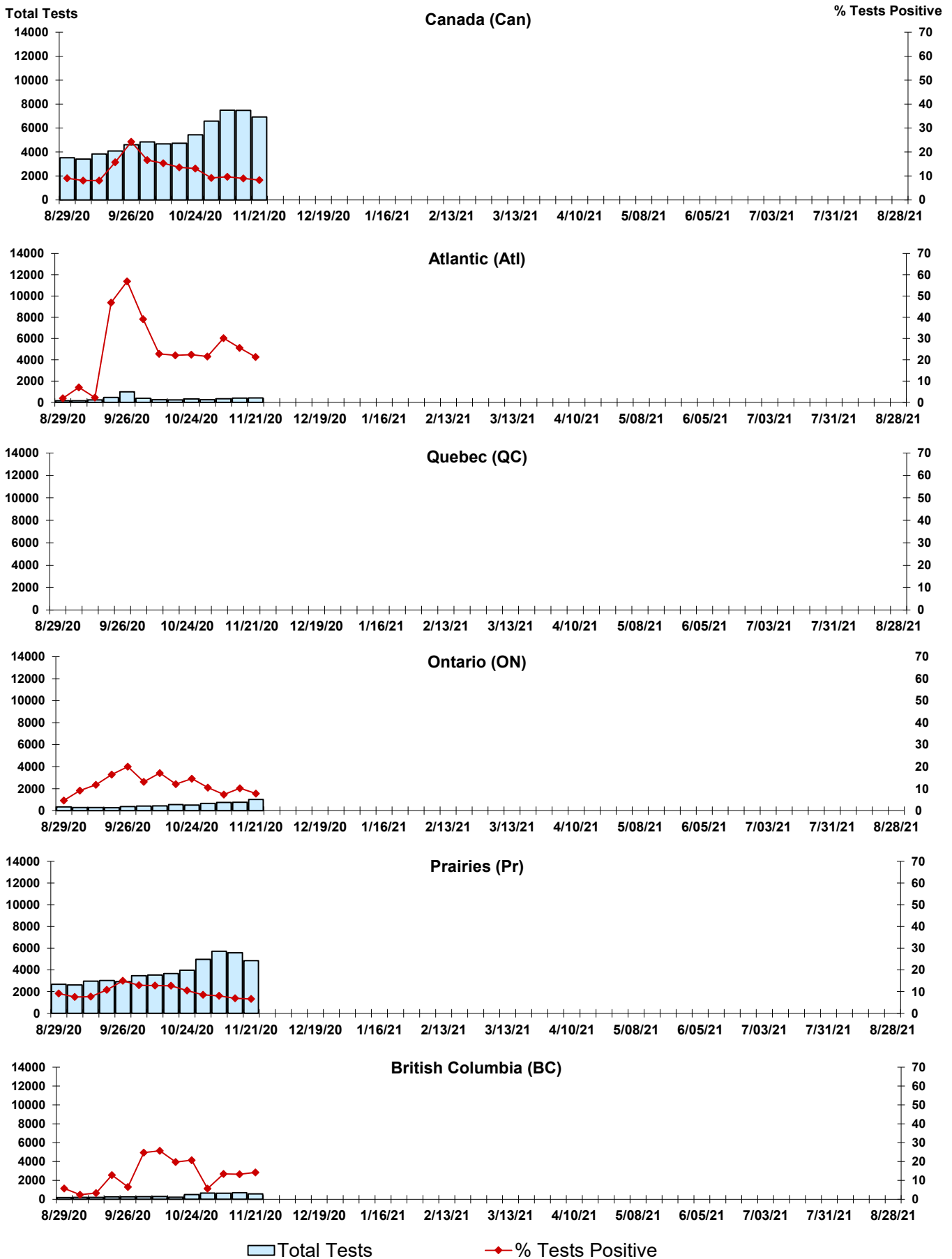
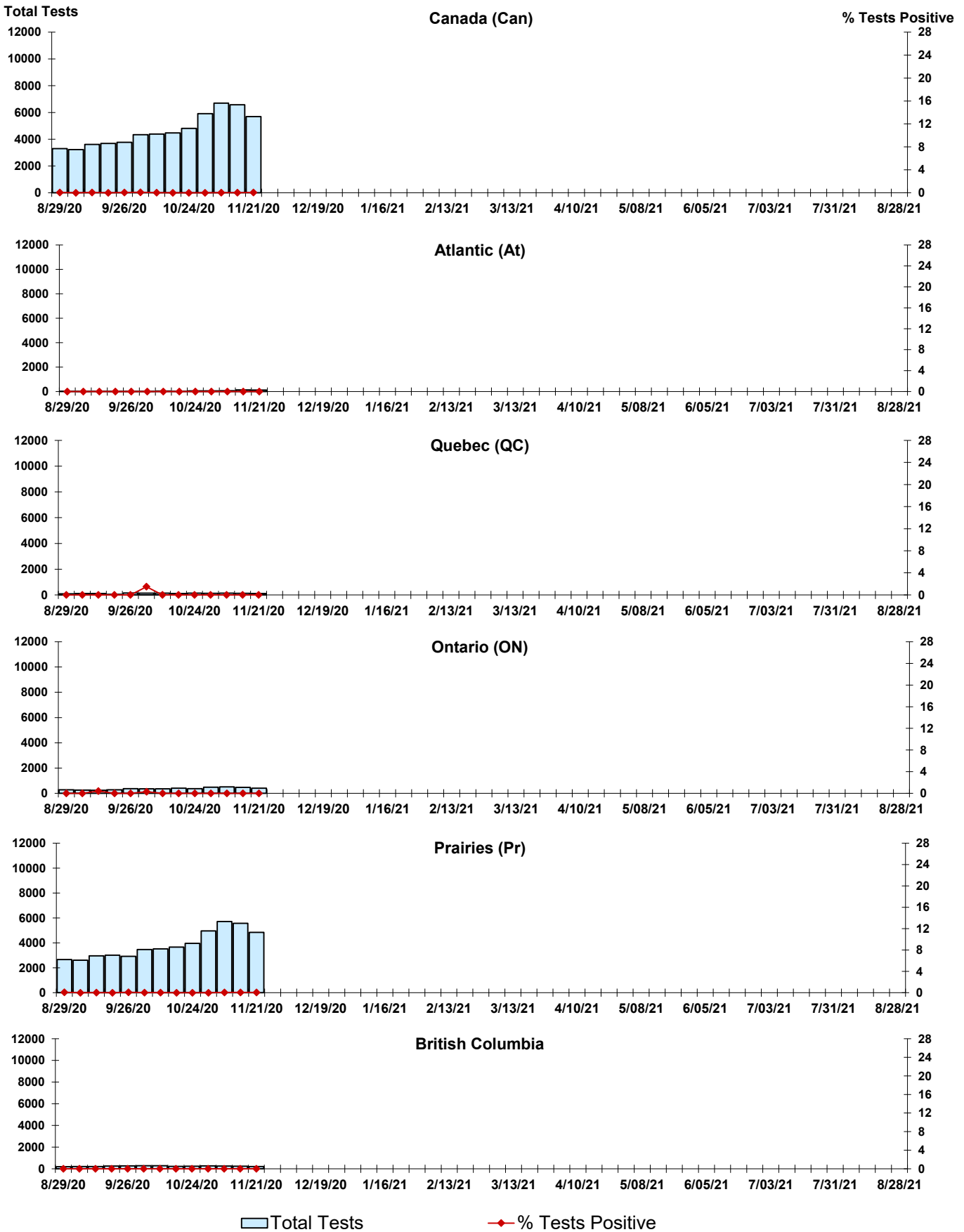


Figure 8: Positive Coronavirus (coron) Tests (%) in Canada by Region by Week of Report



Abbreviations:

A(H1N1)pdm09: Influenza A(H1N1)pdm09

A(H3): Influenza A(H3N2)

A (UnS): Influenza A (Unsubtyped)

Adeno: Adenovirus

CHEO: Children's Hospital of Eastern Ontario

Coron: Coronavirus

Entero: Enterovirus

hMPV: human metapneumovirus

HSC: Health Sciences Centre

N.A.: Not Applicable

P.H.L.: Public Health Laboratory

P.H.O.L.: Public Health Ontario Laboratory

PIV: Parainfluenza

Rhino: Rhinovirus

RSV: Respiratory syncytial virus

UHN: University Health Network

Notes:

Specimens from Yukon (YT), Northwest Territories (NT) and Nunavut (NU) are sent to reference laboratories in other provinces. Results reported for the Territories reflect the number of specimens that are identified as originating from YT, NT or NU.

Delays in the reporting of data may cause data to change retrospectively.

Due to reporting delays, the sum of weekly report totals do not add up to cumulative totals.