

Respiratory Virus Detections in Canada

Respiratory Virus Report, Week 05 - ending February 1, 2020

The Respiratory Virus Detection Surveillance System collects data from select laboratories across Canada on the number of tests performed and the number of tests positive for influenza and other respiratory viruses. Data are reported on a weekly basis year-round to the Centre for Immunization and Respiratory Infectious Diseases (CIRID), Public Health Agency of Canada. These data are also summarized in the weekly FluWatch report.

Table 1: Respiratory Virus Detections/Isolations for the week ending February 1, 2020 (Reporting Week 202005)

Reporting Laboratory	Flu Tested	A(H1N1)pdm09 Positive	A(H3) Positive	A(UnS) Positive	Total Flu A Positive	Total Flu B Positive	RSV Tested	RSV Positive	PIV Tested	PIV 1 Positive	PIV 2 Positive	PIV 3 Positive	PIV 4 Positive	Other PIV Positive	Adeno Tested	Adeno Positive	hMPV Tested	hMPV Positive	Entero/Rhino Tested	Entero/Rhino Positive	Coron Tested	Coron Positive
Newfoundland	148	0	0	5	5	26	148	12	148	2	0	0	0	0	148	3	148	4	148	2	N.A.	N.A.
Prince Edward Island	69	0	0	15	15	11	69	10	2	0	0	0	0	0	2	0	2	0	2	1	2	0
Nova Scotia	175	0	0	13	13	24	177	36	17	0	0	0	0	0	17	0	17	1	17	1	17	1
New Brunswick	756	4	6	66	76	114	756	85	89	1	0	0	1	0	89	1	89	1	89	5	89	8
Atlantic	1148	4	6	99	109	175	1150	143	256	3	0	0	1	0	256	4	256	6	256	9	108	9
Région Nord-Est	645	0	0	73	73	194	582	29	0	0	0	0	0	0	0	0	0	0	N.A.	N.A.	0	0
Québec-Chaudière-Appalaches	1151	0	0	197	197	242	1139	167	130	1	0	1	0	0	130	2	97	4	N.A.	N.A.	96	0
Centre-du-Québec	1389	0	0	197	197	343	1125	130	0	0	0	0	0	0	0	0	0	0	N.A.	N.A.	0	0
Montréal-Laval	2037	0	0	305	305	232	1995	169	862	7	0	0	0	0	862	21	850	21	N.A.	N.A.	850	16
Ouest du Québec	738	0	0	167	167	95	738	78	0	0	0	0	0	0	0	0	0	0	N.A.	N.A.	0	0
Montérégie	544	0	0	91	91	89	544	55	0	0	0	0	0	0	0	0	0	0	N.A.	N.A.	0	0
Province of Québec	6504	0	0	1030	1030	1195	6123	628	992	8	0	1	0	0	992	23	947	25	N.A.	N.A.	946	16
P.H.O.L. - Ottawa	55	12	1	0	13	8	55	2	55	0	0	0	0	0	55	0	55	1	55	1	55	0
CHEO - Ottawa	358	0	0	58	58	44	358	36	39	1	0	0	1	0	39	1	39	2	39	2	39	0
P.H.O.L. - Kingston	25	6	1	1	8	2	25	3	25	0	0	0	0	0	25	1	25	1	25	0	25	0
UHN / Mount Sinai Hospital	460	2	0	28	30	14	460	18	18	0	0	0	0	0	0	0	18	1	0	0	N.A.	N.A.
P.H.O.L. - Toronto	666	100	7	5	112	33	633	25	633	0	0	0	0	0	633	4	627	22	633	25	627	0
Sick Kids Hospital - Toronto	142	8	2	19	29	19	67	5	67	1	0	3	0	0	67	0	67	3	67	9	67	5
Sunnybrook & Women's College HSC	119	0	0	7	7	6	119	16	119	0	0	1	0	0	0	0	119	1	119	3	0	0
P.H.O.L. - Sault Ste. Marie	34	5	0	0	5	1	34	2	34	0	0	0	0	0	34	0	34	0	34	1	34	0
P.H.O.L. - Timmins	25	10	0	2	12	0	20	1	21	0	0	0	0	0	21	0	21	0	21	1	21	0
St. Joseph's - London	241	0	0	35	35	12	241	21	54	1	0	0	0	0	54	3	54	1	20	5	20	1
P.H.O.L. - London	202	27	7	0	34	16	202	12	202	0	0	0	0	0	202	1	201	8	202	8	201	0
P.H.O.L. - Orillia	66	7	0	0	7	1	66	8	66	0	0	0	0	0	66	0	66	0	66	4	66	0
P.H.O.L. - Thunder Bay	41	11	2	0	13	4	41	4	41	0	0	0	0	0	41	1	41	1	41	3	41	0
P.H.O.L. - Sudbury	44	6	0	0	6	4	44	1	44	0	0	0	0	0	44	0	44	0	44	1	44	0
P.H.O.L. - Hamilton	223	34	4	2	40	12	216	6	217	0	0	0	0	0	217	2	216	7	217	10	216	0
P.H.O.L. - Peterborough	29	9	0	0	9	0	29	1	29	0	0	0	0	0	29	0	29	1	29	1	29	0
St. Joseph's - Hamilton	873	0	0	178	178	85	873	61	873	0	0	1	0	0	873	17	873	18	873	2	0	0
Province of Ontario	3603	237	24	335	596	261	3483	222	2537	3	0	5	1	0	2400	30	2529	67	2485	76	1485	6
Manitoba	0	0	0	0	0	0	0	0	0	0	0	0	0	0	0	0	0	0	0	0	0	0
Regina	434	0	0	83	83	66	434	53	173	8	0	1	1	0	173	2	173	3	173	10	173	15
Saskatoon	0	0	0	0	0	0	0	0	0	0	0	0	0	0	0	0	0	0	0	0	0	0
Saskatchewan	434	0	0	83	83	66	434	53	173	8	0	1	1	0	173	2	173	3	173	10	173	15
Alberta	1551	137	46	123	306	217	1128	0	1128	11	2	4	9	0	1128	13	1128	38	1128	98	1128	56
Prairies	1985	137	46	206	389	283	1562	53	1301	19	2	5	10	0	1301	15	1301	41	1301	108	1301	71
Province of British Columbia	1799	16	2	117	271	221	1767	166	352	1	0	1	3	2	352	1	352	24	325	25	225	32
Yukon	95	0	0	2	2	2	95	1	N.A.	N.A.	N.A.	N.A.	N.A.	N.A.	N.A.	N.A.	N.A.	N.A.	N.A.	N.A.	N.A.	N.A.
Northwest Territories	54	8	0	0	8	9	53	0	53	2	0	0	1	0	53	3	53	4	53	2	53	6
Nunavut	19	1	0	5	6	1	19	2	19	0	0	0	0	0	19	0	19	0	2	0	2	0
Territories	168	9	0	7	16	12	167	3	72	2	0	0	1	0	72	3	72	4	55	2	55	6
CANADA	15207	403	78	1794	2411	2147	14252	1215	5510	36	2	12	16	2	5373	76	5457	167	4422	220	4120	140

Specimens from Yukon (YT), Northwest Territories (NT) and Nunavut (NU) are sent to reference laboratories in other provinces and reported results reflect specimens identified as originating from YT, NT or NU.

Results from British Columbia comprise of specimens from the following sites: BC Children's and Women's Hospital, Children's and Women's Hospital Laboratory, Fraser Health Medical Microbiology Laboratory, Island Health, Providence Health Care, Powell River Hospital, St. Paul's Hospital, Vancouver General Hospital, Victoria General Hospital, Victoria Coastal Health, BCCDC Public Health Laboratory, Interior Health Authority sites and Northern Health Authority sites.

Delays in the reporting of data may cause data to change retrospectively.

For British Columbia, only data from subtyped influenza A specimens are included in the weekly number of influenza detections. The sum of A(H1N1)pdm09, A(H3), and A(UnS) positive results may not equal the sum of total Flu A positive results.

Table 2: Respiratory Virus Detections/Isolations for the period August 25, 2019 - February 1, 2020 (Reporting Weeks 201935-202005)

Reporting Laboratory	Flu Tested	A(H1N1)pdm09 Positive	A(H3) Positive	A(UnS) Positive	Total Flu A Positive	Total Flu B Positive	RSV Tested	RSV Positive	PIV Tested	PIV 1 Positive	PIV 2 Positive	PIV 3 Positive	PIV 4 Positive	Other PIV Positive	Adeno Tested	Adeno Positive	hMPV Tested	hMPV Positive	Entero/Rhino Tested	Entero/Rhino Positive	Coron Tested	Coron Positive
Newfoundland	2150	4	24	33	61	71	2150	159	2150	97	0	3	0	0	2150	74	2150	21	2150	280	N.A.	N.A.
Prince Edward Island	535	0	0	30	30	26	535	25	31	1	0	0	0	0	31	0	29	0	31	16	31	0
Nova Scotia	1695	2	1	48	51	55	1722	145	383	13	1	2	5	0	388	7	388	4	388	71	398	5
New Brunswick	5509	27	20	226	273	383	5450	611	1474	43	3	0	10	0	1474	49	1474	4	1474	239	1474	21
Atlantic	9889	33	45	337	415	535	9857	940	4038	154	4	5	15	0	4043	130	4041	29	4043	606	1903	26
Région Nord-Est	3771	0	0	300	300	501	3192	131	0	0	0	0	0	0	0	0	0	0	N.A.	N.A.	0	0
Québec-Chaudière-Appalaches	7530	0	0	715	715	775	7896	713	2007	25	4	3	12	0	2045	71	1651	9	N.A.	N.A.	1648	23
Centre-du-Québec	10846	0	0	1590	1590	1466	9029	753	0	0	0	0	0	0	0	0	0	0	N.A.	N.A.	0	0
Montréal-Laval	25656	0	0	2479	2479	1894	24927	1575	12634	132	4	12	12	0	12634	425	12171	91	N.A.	N.A.	12481	192
Ouest du Québec	7726	0	0	929	929	958	7263	660	0	0	0	0	0	0	0	0	0	0	N.A.	N.A.	0	0
Montérégie	5789	0	0	691	691	529	5694	453	0	0	0	0	0	0	0	0	0	0	N.A.	N.A.	0	0
Province of Québec	61318	0	0	6704	6704	6123	58001	4285	14641	157	8	15	24	0	14679	496	13822	100	N.A.	N.A.	14129	215
P.H.O.L. - Ottawa	804	54	50	1	105	44	795	47	770	2	0	0	0	0	770	8	759	17	614	52	602	0
CHEO - Ottawa	4854	1	0	397	398	215	4854	473	605	6	0	4	8	5	605	12	605	8	608	127	596	18
P.H.O.L. - Kingston	553	33	17	1	51	9	538	39	534	1	0	0	0	0	534	15	526	19	365	39	353	0
UHN / Mount Sinai Hospital	7197	9	0	550	559	107	7197	247	398	6	2	10	2	0	0	0	396	10	0	0	N.A.	N.A.
P.H.O.L. - Toronto	8776	1041	101	28	1170	155	8380	270	8301	34	0	3	0	0	8301	86	8140	155	5757	338	5576	0
Sick Kids Hospital - Toronto	1622	90	11	72	173	97	1393	190	1393	24	5	5	26	0	1393	35	1393	31	1393	283	1393	54
Sunnybrook & Women's College HSC	1020	0	0	101	101	14	1020	34	1020	8	0	5	0	0	901	4	1020	11	1020	31	120	0
P.H.O.L. - Sault Ste. Marie	257	12	0	0	12	5	257	6	257	1	0	0	0	0	257	3	255	4	206	10	204	0
P.H.O.L. - Timmins	183	40	1	2	43	0	163	5	164	0	0	0	0	0	164	0	163	10	136	2	133	0
St. Joseph's - London	2207	0	0	177	177	49	2207	236	785	18	2	2	13	0	785	17	785	20	432	82	411	6
P.H.O.L. - London	2367	161	69	2	232	57	2346	163	2331	8	0	0	0	0	2331	28	2304	62	1875	182	1836	0
P.H.O.L. - Orillia	924	53	24	2	79	27	924	56	921	4	0	0	0	0	921	5	920	15	730	58	727	0
P.H.O.L. - Thunder Bay	321	33	5	3	41	28	319	8	319	0	0	1	0	0	319	5	310	8	271	25	261	0
P.H.O.L. - Sudbury	359	15	11	2	28	10	354	16	354	0	0	1	0	0	354	6	345	6	282	15	272	0
P.H.O.L. - Hamilton	2552	197	30	5	232	61	2472	107	2453	10	1	0	0	0	2453	43	2437	51	1858	176	1838	0
P.H.O.L. - Peterborough	655	39	2	0	41	2	652	20	651	3	0	0	0	0	650	6	647	20	396	41	390	0
St. Joseph's - Hamilton	7167	0	0	1117	1117	320	7167	942	7167	103	5	5	0	0	7167	158	7167	96	7167	509	0	0
Province of Ontario	41818	1778	321	2460	4559	1200	41038	2859	28423	228	15	36	49	5	27905	431	28172	543	23110	1970	14712	78
Manitoba	7707	78	68	423	569	638	7454	512	2632	36	5	3	3	0	2632	47	1698	31	2632	421	1698	16
Regina	5360	0	0	592	592	291	5360	170	2908	116	7	4	16	0	2908	54	2831	44	2908	621	2908	52
Saskatoon	3779	0	0	250	250	200	3779	119	3779	95	8	5	4	0	3779	59	3782	12	3779	496	3779	30
Saskatchewan	9139	0	0	842	842	491	9139	289	6687	211	15	9	20	0	6687	113	6613	56	6687	1117	6687	82
Alberta	23411	635	1045	743	2423	2536	18551	0	18551	410	39	29	152	0	18551	312	18551	452	18551	2901	18551	477
Prairies	40257	713	1113	2008	3834	3665	35144	801	27870	657	59	41	175	0	27870	472	26862	539	27870	4439	26936	575
Province of British Columbia	19181	174	234	380	1378	1014	18904	1226	6005	165	48	25	40	35	6002	69	5976	308	5565	1165	4694	129
Yukon	1111	4	8	19	31	6	1111	2	N.A.	N.A.	N.A.	N.A.	N.A.	N.A.	N.A.	N.A.	N.A.	N.A.	N.A.	N.A.	N.A.	N.A.
Northwest Territories	504	38	8	1	47	25	495	0	495	9	0	2	5	0	495	14	495	41	495	106	495	35
Nunavut	232	1	0	18	19	4	229	6	229	12	3	0	3	0	229	10	229	2	212	70	53	2
Territories	1847	43	16	38	97	35	1835	8	724	21	3	2	8	0	724	24	724	43	707	176	548	37
CANADA	174310	2741	1729	11927	16987	12572	164779	10119	81701	1382	137	124	311	40	81223	1622	79597	1562	61295	8356	62922	1060

Specimens from YT, NT and NU are sent to reference laboratories in other provinces and reported results reflect specimens identified as originating from YT, NT or NU.

Results from British Columbia comprise of specimens from the following sites: BC Children's and Women's Hospital, Children's and Women's Hospital Laboratory, Fraser Health Medical Microbiology Laboratory, Island Health, Providence Health Care, Powell River Hospital, St. Paul's Hospital, Vancouver General Hospital, Victoria General Hospital, Victoria Coastal Health, BCCDC Public Health Laboratory, Interior Health Authority sites and Northern Health Authority sites.

Delays in the reporting of data may cause data to change retrospectively.

Due to reporting delays, the sum of weekly report totals do not add up to cumulative totals.

For BC, only data from subtyped influenza A specimens are included in the weekly number of influenza detections. The sum of A(H1N1)pdm09, A(H3), and A(UnS) positive results may not equal the sum of total Flu A positive results.

Figure 1: Number positive laboratory tests for other respiratory viruses by report week, Canada, 2019-2020

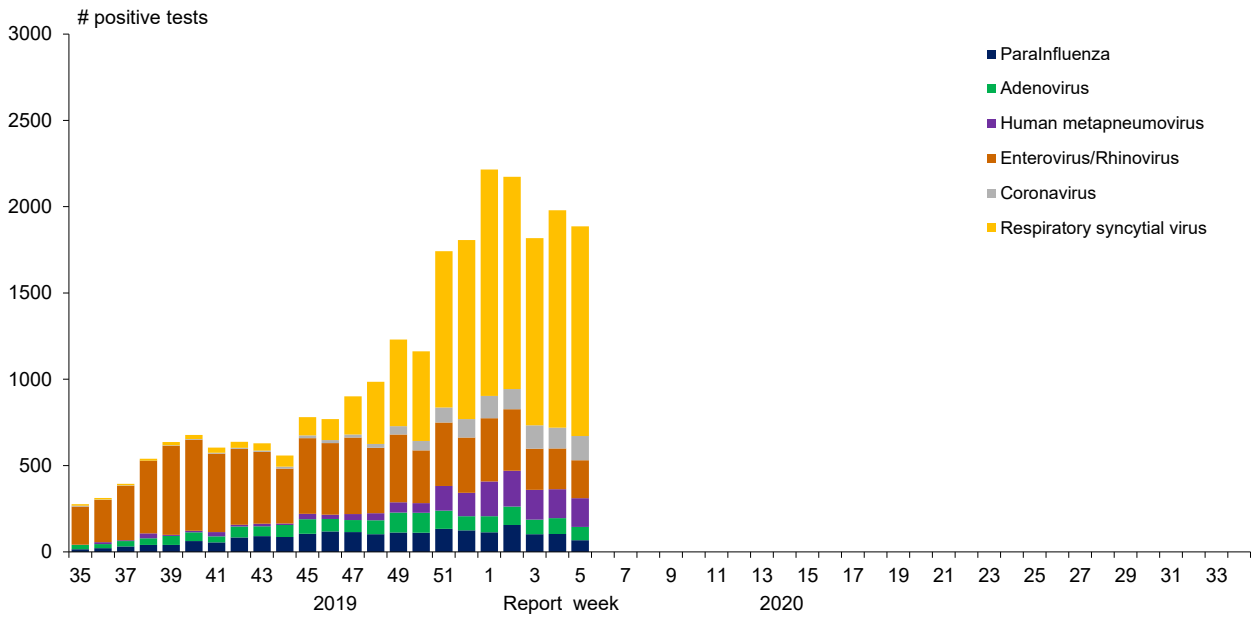


Figure 2: Positive Influenza Tests (%) in Canada by Region by Week of Report

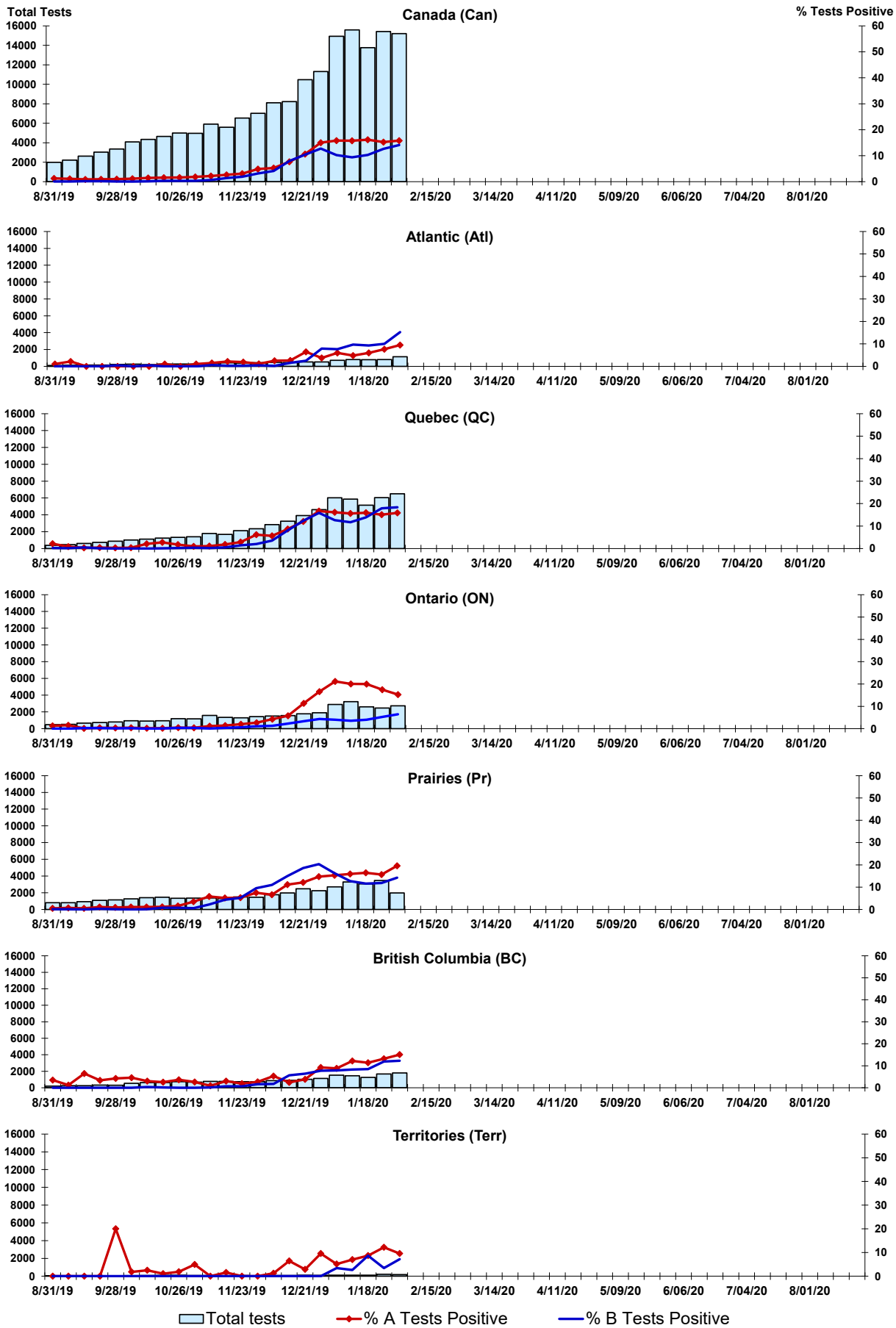


Figure 3: Positive Respiratory syncytial virus (RSV) Tests (%) in Canada by Region by Week of Report

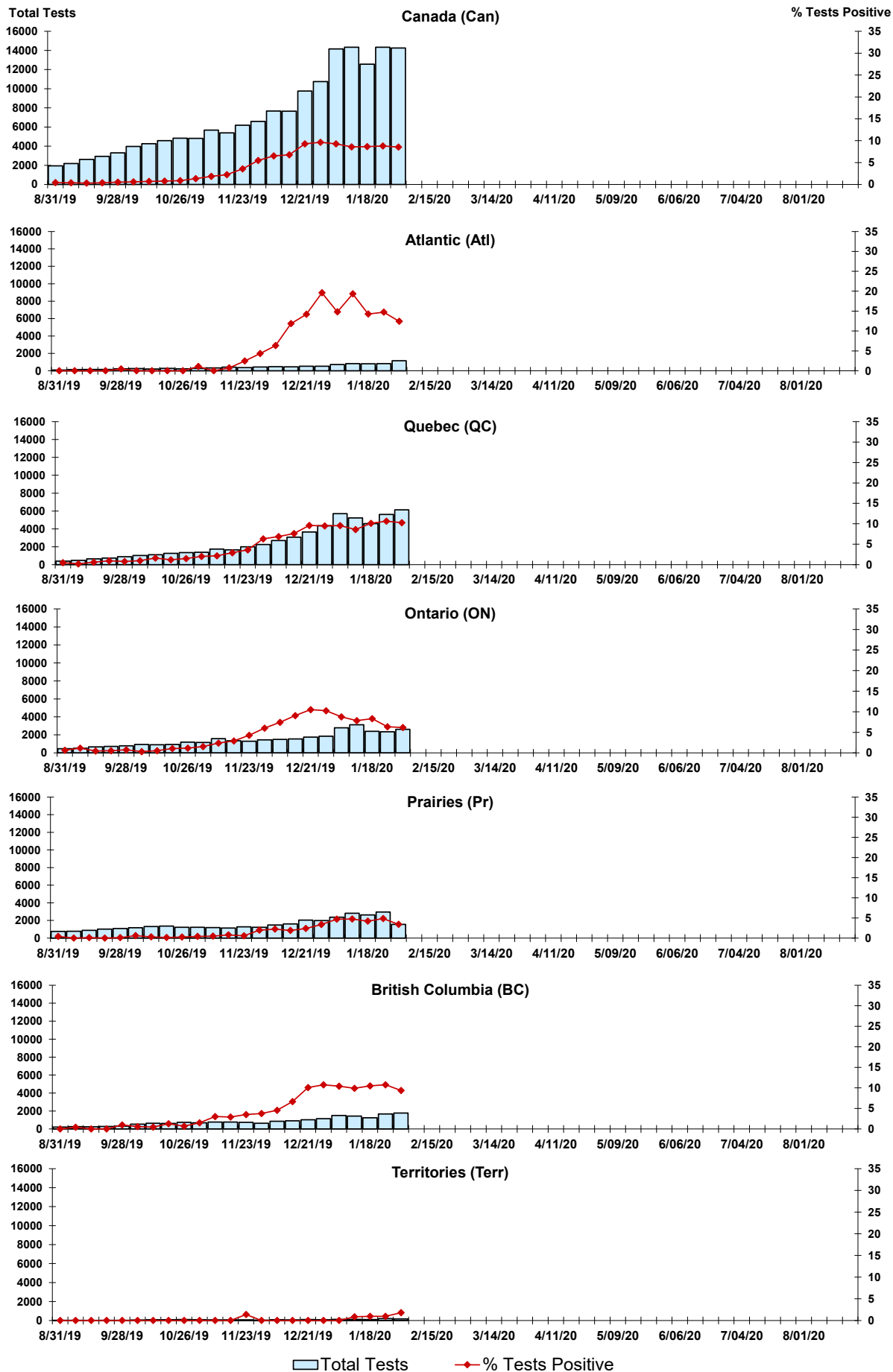


Figure 4: Positive Parainfluenza (PIV) Tests (%) in Canada by Region by Week of Report

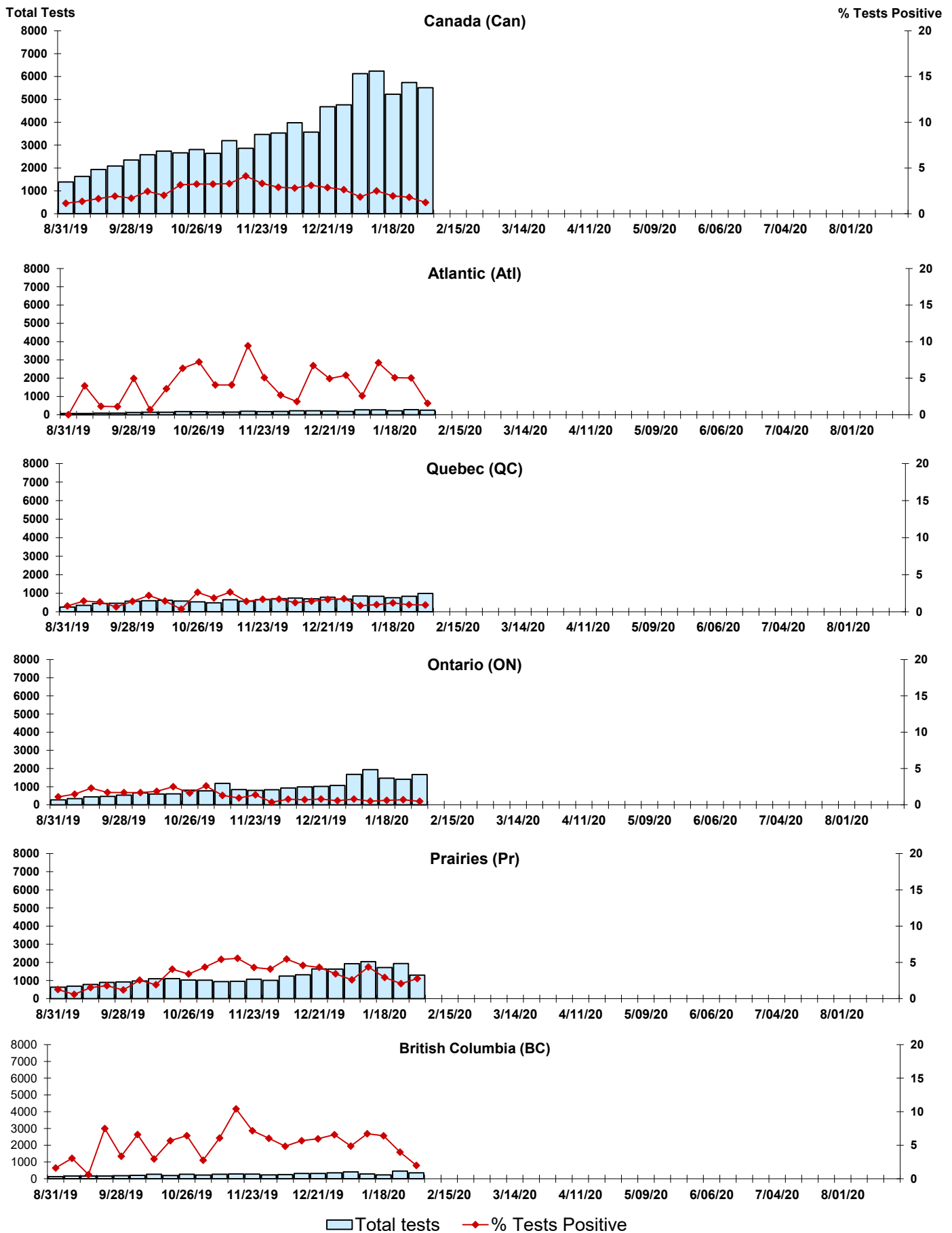


Figure 5: Positive Adenovirus (adeno) Tests (%) in Canada by Region by Week of Report

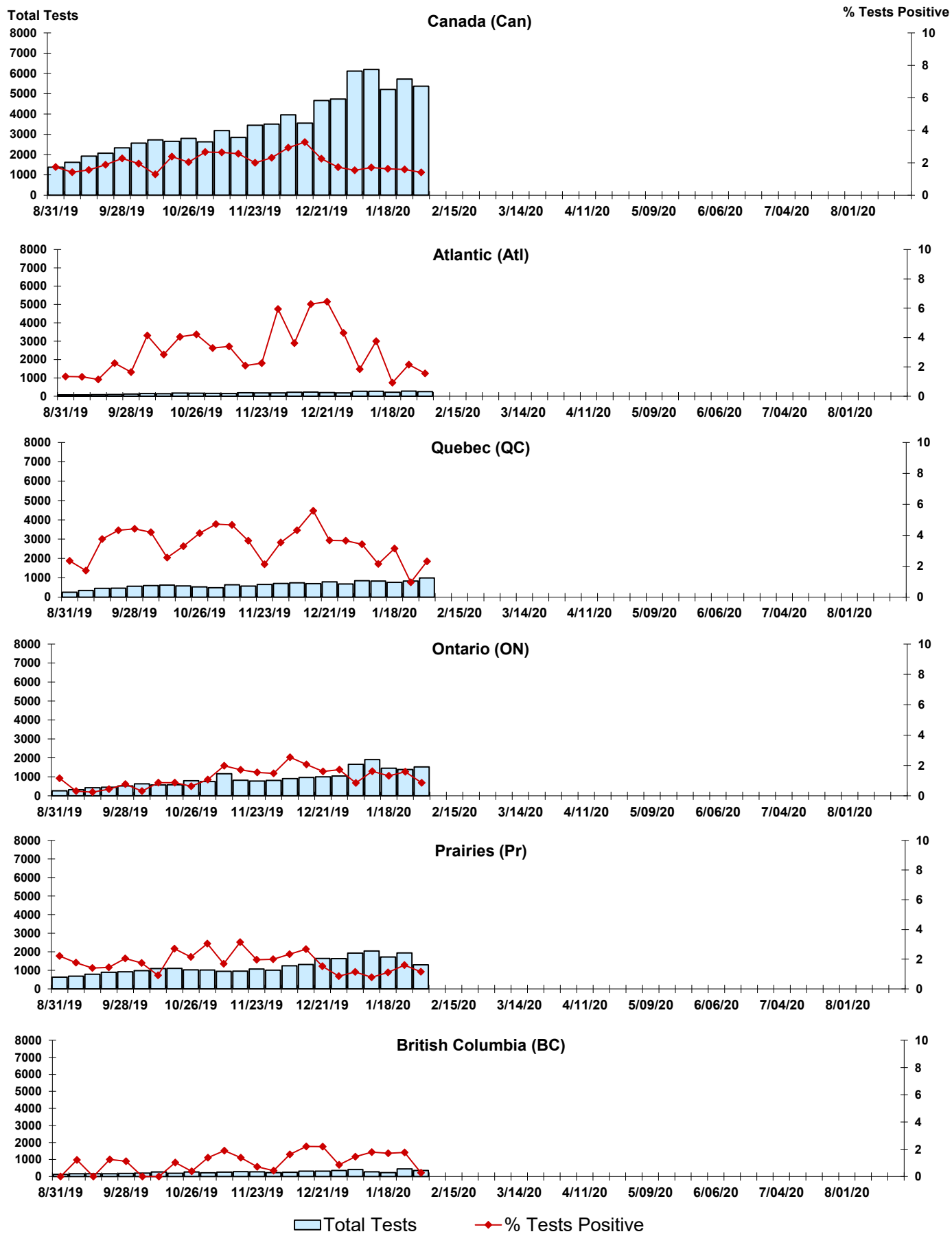


Figure 6: Positive human metapneumovirus (hMPV) Tests (%) in Canada by Region by Week of Report

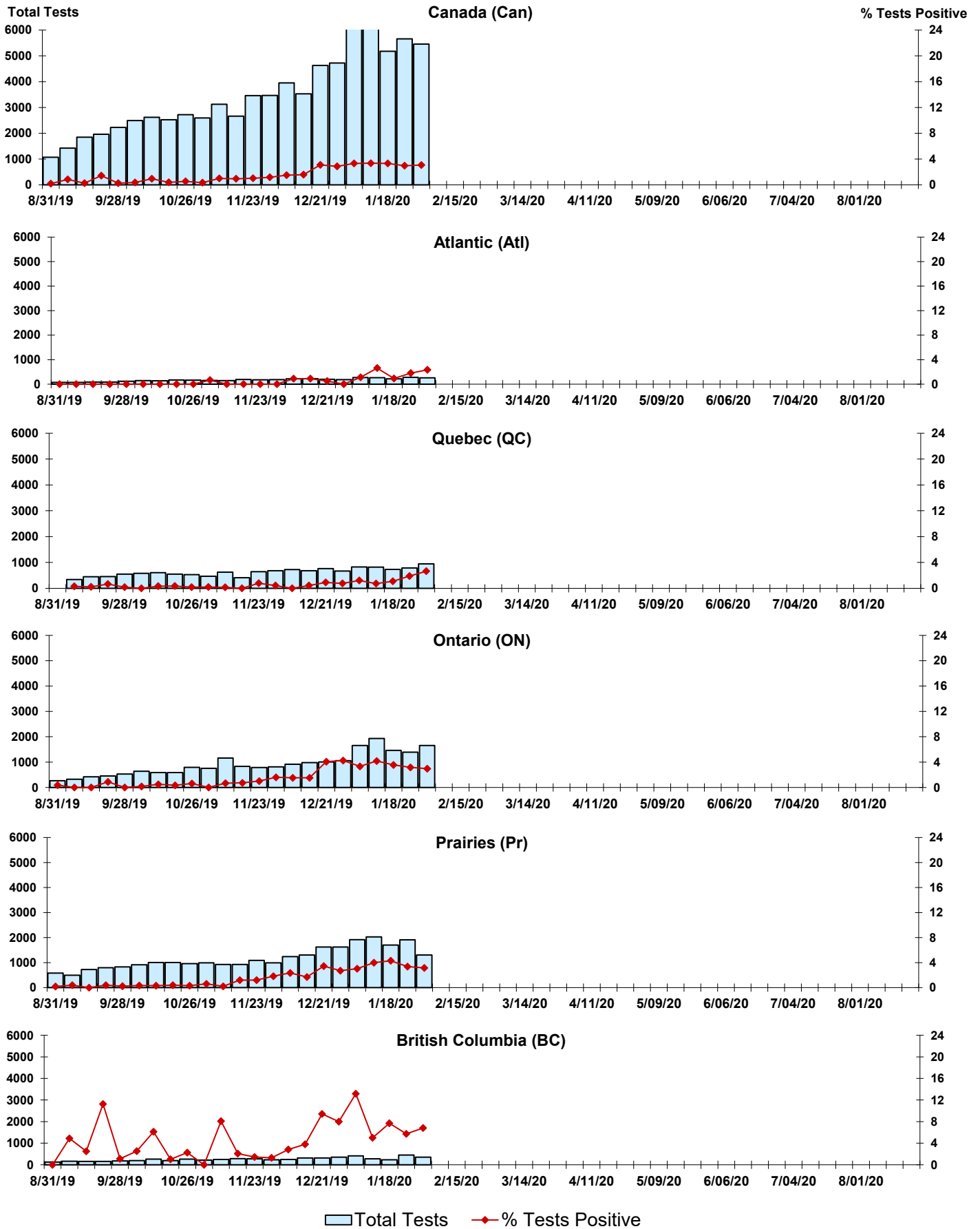


Figure 7: Positive Enterovirus/Rhinovirus (entero/rhino) Tests (%) in Canada by Region by Week of Report

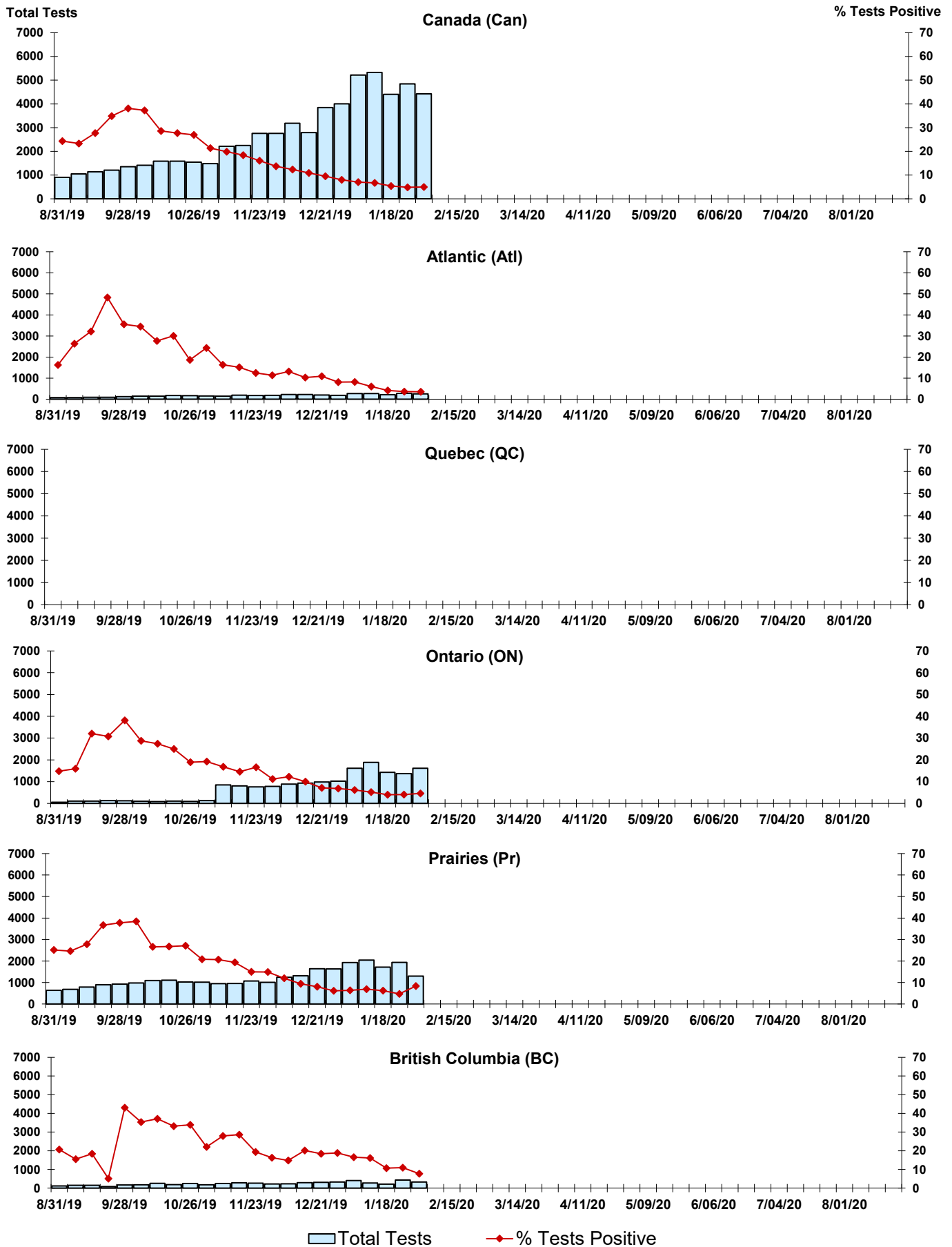
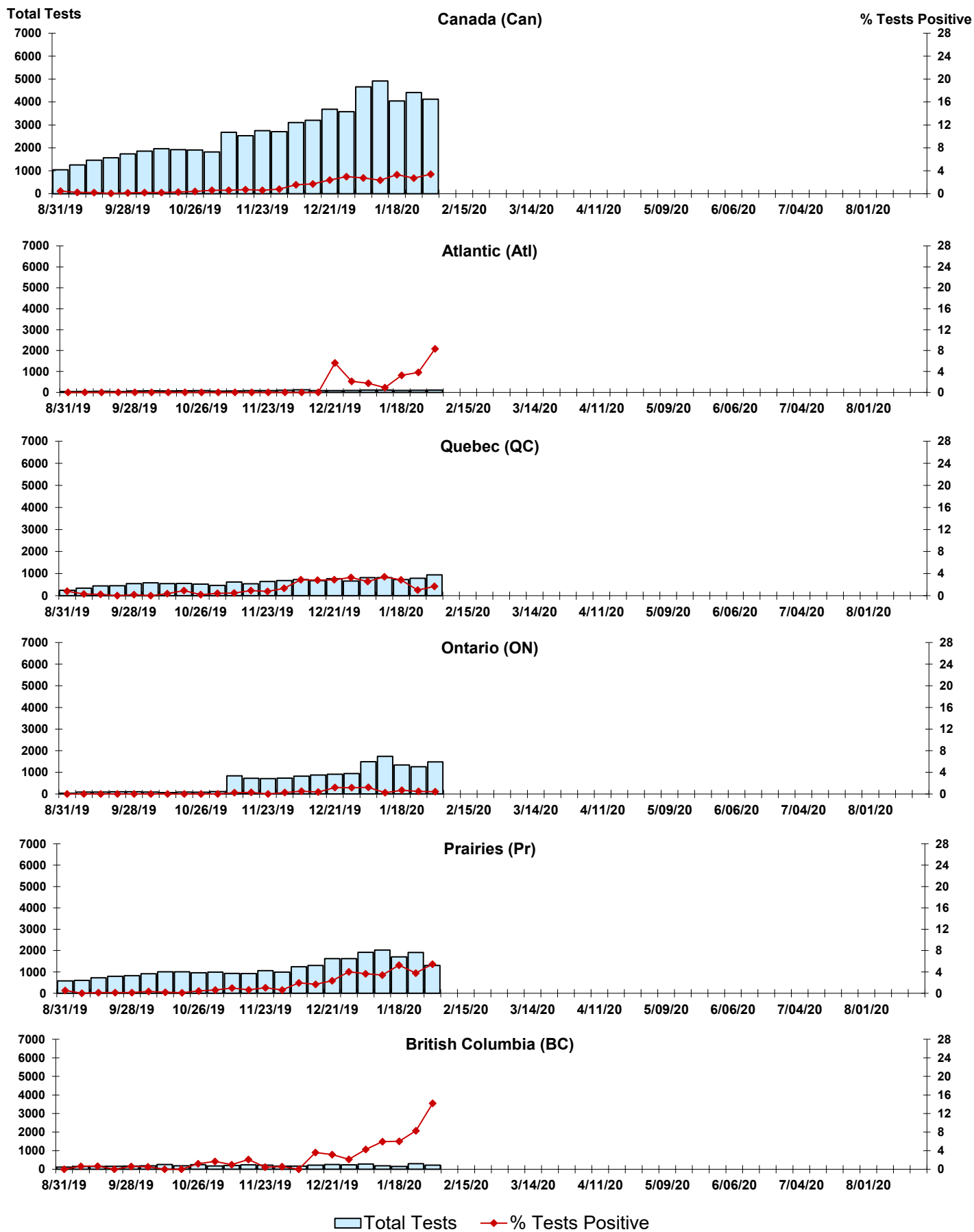


Figure 8: Positive Coronavirus (coron) Tests (%) in Canada by Region by Week of Report



Abbreviations:

A(H1N1)pdm09: Influenza A(H1N1)pdm09

A(H3): Influenza A(H3N2)

A (UnS): Influenza A (Unsubtyped)

Adeno: Adenovirus

CHEO: Children's Hospital of Eastern Ontario

Coron: Coronavirus

Enterovirus

hMPV: human metapneumovirus

HSC: Health Sciences Centre

N.A.: Not Applicable

P.H.O.L.: Public Health Ontario Laboratory

PIV: Parainfluenza

Rhino: Rhinovirus

RSV: Respiratory syncytial virus

UHN: University Health Network

Notes:

Specimens from Yukon (YT), Northwest Territories (NT) and Nunavut (NU) are sent to reference laboratories in other provinces. Results reported for the Territories reflect the number of specimens that are identified as originating from YT, NT or NU.

Delays in the reporting of data may cause data to change retrospectively.

Due to reporting delays, the sum of weekly report totals do not add up to cumulative totals.