

Respiratory Virus Report, Week 50 - ending December 12, 2020

The Respiratory Virus Detection Surveillance System collects data from select laboratories across Canada on the number of tests performed and the number of tests positive for influenza and other respiratory viruses. Data are reported on a weekly basis year-round to the Centre for Immunization and Respiratory Infectious Diseases (CIRID), Public Health Agency of Canada. These data are also summarized in the weekly FluWatch report.

In this Respiratory Virus Report, the number of detections of coronavirus reflects only seasonal human coronaviruses, not the novel pandemic coronavirus (SARS-CoV2) that causes COVID-19. For information on COVID-19, see the [Coronavirus disease \(COVID-19\): Outbreak](#)

Table 1: Respiratory Virus Detections/Isolations for the week ending December 12, 2020 (Reporting Week 202050)

Reporting Laboratory	Flu Tested	A(H1N1)pdm09 Positive	A(H3) Positive	A(UnS) Positive	Total Flu A Positive	Total Flu B Positive	RSV Tested	RSV Positive	PIV Tested	PIV 1 Positive	PIV 2 Positive	PIV 3 Positive	PIV 4 Positive	Other PIV Positive	Adeno Tested	Adeno Positive	hMPV Tested	hMPV Positive	Entero/Rhino Tested	Entero/Rhino Positive	Coron Tested	Coron Positive
Newfoundland	286	0	0	0	0	0	286	0	286	0	0	0	0	0	286	1	286	0	286	47	N.A.	N.A.
Prince Edward Island	103	0	0	0	0	0	103	0	103	0	0	0	0	0	103	1	103	0	103	19	103	0
Nova Scotia	190	0	0	0	0	0	190	0	9	0	0	0	0	0	9	0	9	0	9	0	9	0
New Brunswick	3037	0	0	0	0	0	437	0	15	0	0	0	0	0	15	0	15	0	15	1	15	0
Atlantic	3616	0	0	0	0	0	1016	0	413	0	0	0	0	0	413	2	413	0	413	67	127	0
Région Nord-Est	157	0	0	0	0	0	52	0	0	0	0	0	0	0	0	0	0	0	N.A.	N.A.	0	0
Québec-Chaudière-Appalaches	32	0	0	0	0	0	31	0	19	0	0	0	0	0	19	1	19	0	N.A.	N.A.	19	0
Centre-du-Québec	33	0	0	0	0	0	33	0	5	0	0	0	0	0	5	0	5	0	N.A.	N.A.	5	0
Montréal-Laval	105	0	0	0	0	0	105	0	62	0	0	0	0	0	62	9	62	0	N.A.	N.A.	62	1
Ouest du Québec	51	0	0	0	0	0	47	0	0	0	0	0	0	0	0	0	0	0	N.A.	N.A.	0	0
Montérégie	0	0	0	0	0	0	0	0	0	0	0	0	0	0	0	0	0	0	N.A.	N.A.	0	0
Province of Québec	378	0	0	0	0	0	268	0	86	0	0	0	0	0	86	10	86	0	N.A.	N.A.	86	1
P.H.O.L. - Ottawa	16	0	0	0	0	0	16	0	15	0	0	0	0	0	15	0	15	0	15	0	15	0
CHEO - Ottawa	175	0	0	0	0	0	175	0	24	0	0	0	0	0	24	0	24	0	24	0	24	0
P.H.O.L. - Kingston	52	0	0	1	1	0	52	0	24	0	0	0	0	0	24	0	24	0	24	2	24	0
UHN / Mount Sinai Hospital	0	0	0	0	0	0	0	0	0	0	0	0	0	0	0	0	0	0	0	0	0	0
P.H.O.L. - Toronto	207	0	0	0	0	0	207	0	206	0	0	0	0	0	206	0	206	0	206	4	206	0
Sick Kids Hospital - Toronto	0	0	0	0	0	0	0	0	0	0	0	0	0	0	0	0	0	0	0	0	0	0
Sunnybrook & Women's College HSC	0	0	0	0	0	0	0	0	0	0	0	0	0	0	0	0	0	0	0	0	0	0
P.H.O.L. - Sault Ste. Marie	1	0	0	0	0	0	1	0	1	0	0	0	0	0	1	0	1	0	1	0	1	0
P.H.O.L. - Timmins	23	0	0	0	0	0	23	0	5	0	0	0	0	0	5	0	5	0	5	3	5	0
St. Joseph's - London	0	0	0	0	0	0	0	0	0	0	0	0	0	0	0	0	0	0	0	0	0	0
P.H.O.L. - London	100	0	0	0	0	0	99	0	93	0	0	0	0	0	93	0	93	0	93	13	93	0
P.H.O.L. - Orillia	20	0	0	0	0	0	20	0	20	0	0	0	0	0	20	0	20	0	20	2	20	0
P.H.O.L. - Thunder Bay	19	0	0	0	0	0	19	0	19	0	0	0	0	0	19	1	19	0	19	2	19	0
P.H.O.L. - Sudbury	18	0	0	0	0	0	18	0	18	0	0	0	0	0	18	0	18	0	18	3	18	0
P.H.O.L. - Hamilton	70	0	0	0	0	0	70	0	58	0	0	0	0	0	58	0	58	0	58	5	58	0
P.H.O.L. - Peterborough	5	0	0	0	0	0	5	0	4	0	0	0	0	0	4	0	4	0	4	0	4	0
St. Joseph's - Hamilton	398	0	0	0	0	0	398	0	398	0	0	0	0	0	398	1	398	0	398	27	0	0
Province of Ontario	1104	0	0	1	1	0	1103	0	885	0	0	0	0	0	885	2	885	0	885	61	487	0
Province of Manitoba	2243	0	0	0	0	1	2243	6	117	0	0	0	0	0	117	3	112	1	117	9	112	0
Province of Saskatchewan	226	0	0	0	0	0	226	0	60	0	0	0	0	0	60	0	60	0	60	3	60	0
Province of Alberta	4601	0	0	0	0	0	1813	0	1813	0	1	0	0	0	1813	3	1813	0	1813	98	1813	1
Prairies	7070	0	0	0	0	1	4282	6	1990	0	1	0	0	0	1990	6	1985	1	1990	110	1985	1
British Columbia	1891	0	0	0	0	0	1891	1	803	0	1	0	0	0	803	3	803	0	781	52	208	2
Yukon	39	0	0	0	0	0	39	0	N.A.	N.A.	N.A.	N.A.	N.A.	N.A.	N.A.	N.A.	N.A.	N.A.	N.A.	N.A.	N.A.	N.A.
Northwest Territories	11	0	0	0	0	0	11	0	11	0	0	0	0	0	11	0	11	0	11	3	11	0
Nunavut	4	0	0	0	0	0	4	0	4	0	0	0	0	0	4	0	4	0	4	2	1	0
Territories	54	0	0	0	0	0	54	0	15	0	0	0	0	0	15	0	15	0	15	5	12	0
CANADA	14113	0	0	1	1	1	8614	7	4192	0	2	0	0	0	4192	23	4187	1	4084	295	2905	4

The data in the RVDSS report represent surveillance data available at the time of writing. Missing data are denoted by N.A.

Specimens from Yukon (YT), Northwest Territories (NT) and Nunavut (NU) are sent to reference laboratories in other provinces and reported results reflect specimens identified as originating from YT, NT or NU.

Results from British Columbia comprise of specimens from the following sites: BC Children's and Women's Hospital, Children's and Women's Hospital, Fraser Health Medical Microbiology Laboratory, Island Health, Providence Health Care, Powell River Hospital, St. Paul's Hospital, Vancouver General Hospital, Victoria General Hospital, Victoria Coastal Health, BCCDC Public Health Laboratory, Interior Health Authority sites and Northern Health Authority sites.

Delays in the reporting of data may cause data to change retrospectively.

Table 2: Respiratory Virus Detections/Isolations for the period August 23, 2020 - December 12, 2020 (Reporting Weeks 202035-202050)

Reporting Laboratory	Flu Tested	A(H1N1)pdm09 Positive	A(H3) Positive	A(UnS) Positive	Total Flu A Positive	Total Flu B Positive	RSV Tested	RSV Positive	PIV Tested	PIV 1 Positive	PIV 2 Positive	PIV 3 Positive	PIV 4 Positive	Other PIV Positive	Adeno Tested	Adeno Positive	hMPV Tested	hMPV Positive	Entero/Rhino Tested	Entero/Rhino Positive	Coron Tested	Coron Positive
Newfoundland	5001	0	0	0	0	0	5001	6	5001	0	0	1	0	0	5003	18	5001	1	5001	1558	N.A.	N.A.
Prince Edward Island	569	0	0	0	0	0	569	2	565	2	0	0	0	0	565	5	565	0	565	110	565	0
Nova Scotia	600	0	0	0	0	0	602	0	230	0	0	0	0	0	230	3	230	0	230	39	230	0
New Brunswick	13990	0	0	0	0	0	6137	0	289	0	0	0	0	0	280	4	280	0	280	40	235	0
Atlantic	20160	0	0	0	0	0	12309	8	6085	2	0	1	0	0	6078	30	6076	1	6076	1747	1030	0
Région Nord-Est	732	0	0	0	0	0	468	1	0	0	0	0	0	0	0	0	0	0	N.A.	N.A.	0	0
Québec-Chaudière-Appalaches	340	0	0	1	1	0	381	0	248	0	0	0	0	0	250	14	245	0	N.A.	N.A.	228	0
Centre-du-Québec	285	0	0	0	0	0	290	1	106	0	0	0	0	0	104	8	106	0	N.A.	N.A.	103	0
Montréal-Laval	2278	0	0	0	0	0	2160	1	1512	0	0	0	0	0	1566	67	1502	0	N.A.	N.A.	1502	3
Ouest du Québec	390	0	0	0	0	0	360	0	0	0	0	0	0	0	0	0	0	0	N.A.	N.A.	0	0
Montérégie	0	0	0	0	0	0	0	0	0	0	0	0	0	0	0	0	0	0	N.A.	N.A.	0	0
Province of Québec	4025	0	0	1	1	0	3659	3	1866	0	0	0	0	0	1920	89	1853	0	N.A.	N.A.	1833	3
P.H.O.L. - Ottawa	241	0	0	0	0	0	241	1	232	0	0	0	0	0	232	0	232	0	232	13	232	0
CHEO - Ottawa	2017	0	0	1	1	1	1614	4	342	0	0	0	0	0	342	2	342	0	342	33	342	0
P.H.O.L. - Kingston	430	0	0	1	1	0	430	0	350	0	0	0	0	0	350	2	347	0	350	94	347	0
UHN / Mount Sinai Hospital	1236	0	0	0	0	1	1236	1	1032	0	1	1	1	1	0	0	992	4	789	19	40	0
P.H.O.L. - Toronto	2679	0	0	0	0	0	2677	2	2676	0	0	0	0	2	2677	8	2675	0	2676	120	2675	2
Sick Kids Hospital - Toronto	0	0	0	0	0	0	0	0	0	0	0	0	0	0	0	0	0	0	0	0	0	0
Sunnybrook & Women's College HSC	0	0	0	0	0	0	0	0	0	0	0	0	0	0	0	0	0	0	0	0	0	0
P.H.O.L. - Sault Ste. Marie	65	0	0	2	2	0	63	0	62	0	0	0	0	0	62	0	62	0	62	3	62	0
P.H.O.L. - Timmins	265	0	0	0	0	0	265	0	113	0	0	0	0	0	113	0	113	0	113	26	113	0
St. Joseph's - London	218	0	0	0	0	0	218	0	55	0	0	0	0	0	55	0	55	0	91	8	36	0
P.H.O.L. - London	969	1	0	5	6	2	959	0	877	0	0	0	0	2	877	2	873	0	877	106	873	0
P.H.O.L. - Orillia	144	0	0	1	1	0	142	0	140	0	0	0	0	0	140	0	140	0	140	11	140	0
P.H.O.L. - Thunder Bay	298	0	0	0	0	0	298	0	298	0	0	0	0	0	299	2	298	0	298	124	298	0
P.H.O.L. - Sudbury	202	0	0	0	0	0	200	0	198	0	0	0	0	0	198	1	198	0	198	17	198	0
P.H.O.L. - Hamilton	845	0	0	0	0	0	802	0	758	0	0	0	0	0	758	2	758	0	758	80	758	0
P.H.O.L. - Peterborough	261	0	0	1	1	0	216	0	205	0	0	0	0	0	205	0	205	0	205	18	205	0
St. Joseph's - Hamilton	2674	0	0	0	0	0	2674	0	2674	0	0	0	0	0	2674	10	2674	0	2674	263	0	0
Province of Ontario	12544	1	0	11	12	4	12035	8	10012	0	1	1	1	4	8982	29	9964	4	9805	935	6319	2
Manitoba	17757	0	0	0	0	1	17757	43	1570	0	1	1	0	0	1570	12	1482	1	1570	113	1482	1
Province of Saskatchewan	1748	0	0	0	0	0	1748	2	946	0	0	0	0	0	946	8	946	0	946	113	946	0
Province of Alberta	64320	0	0	2	2	0	58413	0	58413	2	17	1	3	0	58413	86	58413	10	58413	5277	58413	17
Prairies	83825	0	0	2	2	1	77918	45	60929	2	18	2	3	0	60929	106	60841	11	60929	5503	60841	18
British Columbia	26026	1	2	4	7	5	26024	6	7286	0	2	0	3	0	7752	36	7752	24	7617	845	4021	2
Yukon	3404	0	0	8	8	7	3357	4	N.A.	N.A.	N.A.	N.A.	N.A.	N.A.	N.A.	N.A.	N.A.	N.A.	N.A.	N.A.	N.A.	N.A.
Northwest Territories	683	0	0	0	0	0	683	0	683	0	0	0	1	0	683	5	683	1	683	219	683	0
Nunavut	1062	0	0	0	0	0	1062	0	1062	3	1	0	0	0	1062	24	1062	5	1062	277	170	0
Territories	5149	0	0	8	8	7	5102	4	1745	3	1	0	1	0	1745	29	1745	6	1745	496	853	0
CANADA	151729	2	2	26	30	17	137047	74	87923	7	22	4	8	4	87406	319	88231	46	86172	9526	74897	25

The data in the RVDSS report represent surveillance data available at the time of writing. Missing data are denoted by N.A.

Specimens from YT, NT and NU are sent to reference laboratories in other provinces and reported results reflect specimens identified as originating from YT, NT or NU.

Results from British Columbia comprise of specimens from the following sites: BC Children's and Women's Hospital, Children's and Women's Hospital Laboratory, Fraser Health Medical Microbiology Laboratory, Island Health, Providence Health Care, Powell River Hospital, St. Paul's Hospital, Vancouver General Hospital, Victoria General Hospital, Victoria Coastal Health, BCCDC Public Health Laboratory, Interior Health Authority sites and Northern Health Authority sites.

Delays in the reporting of data may cause data to change retrospectively.

Due to reporting delays, the sum of weekly report totals do not add up to cumulative totals.

Figure 1: Number positive laboratory tests for other respiratory viruses by report week, Canada, 2020-21

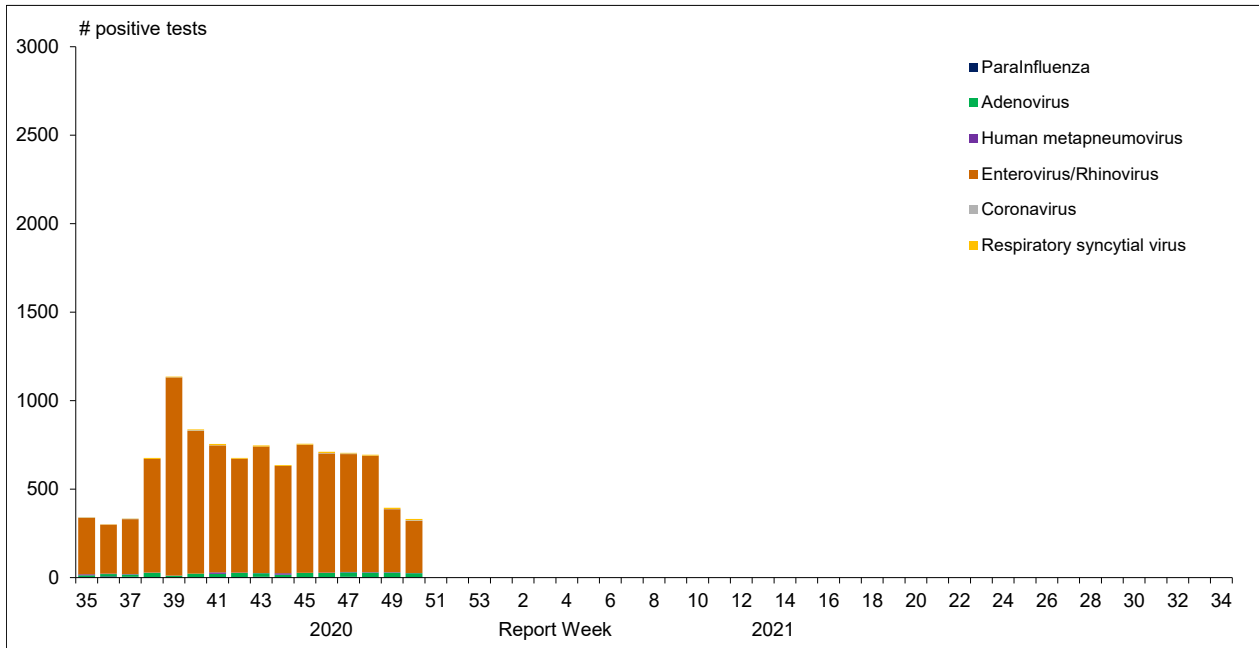


Figure 2 : Positive Influenza Tests (%) in Canada by Region by Week of Report

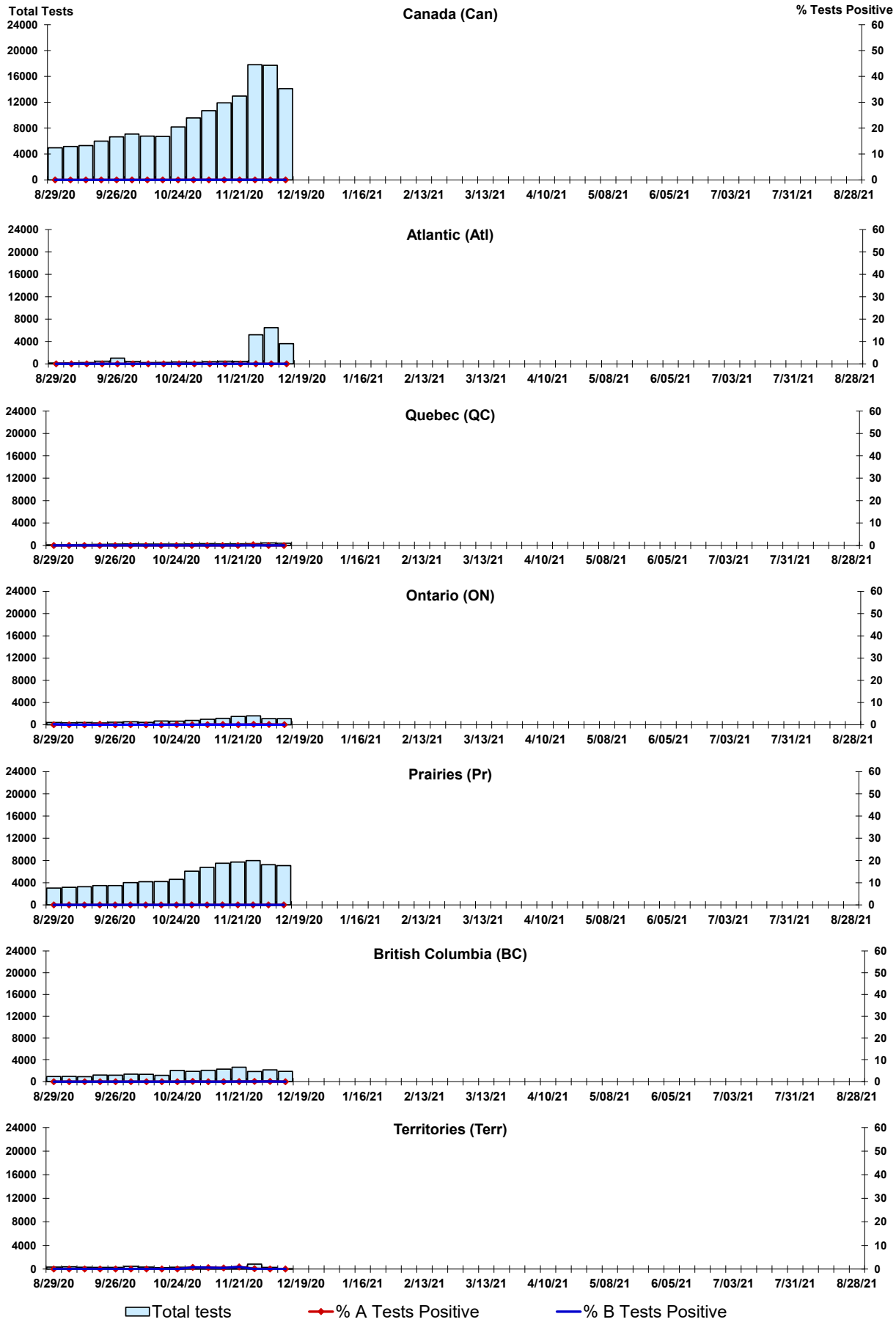


Figure 3: Positive Respiratory syncytial virus (RSV) Tests (%) in Canada by Region by Week of Report

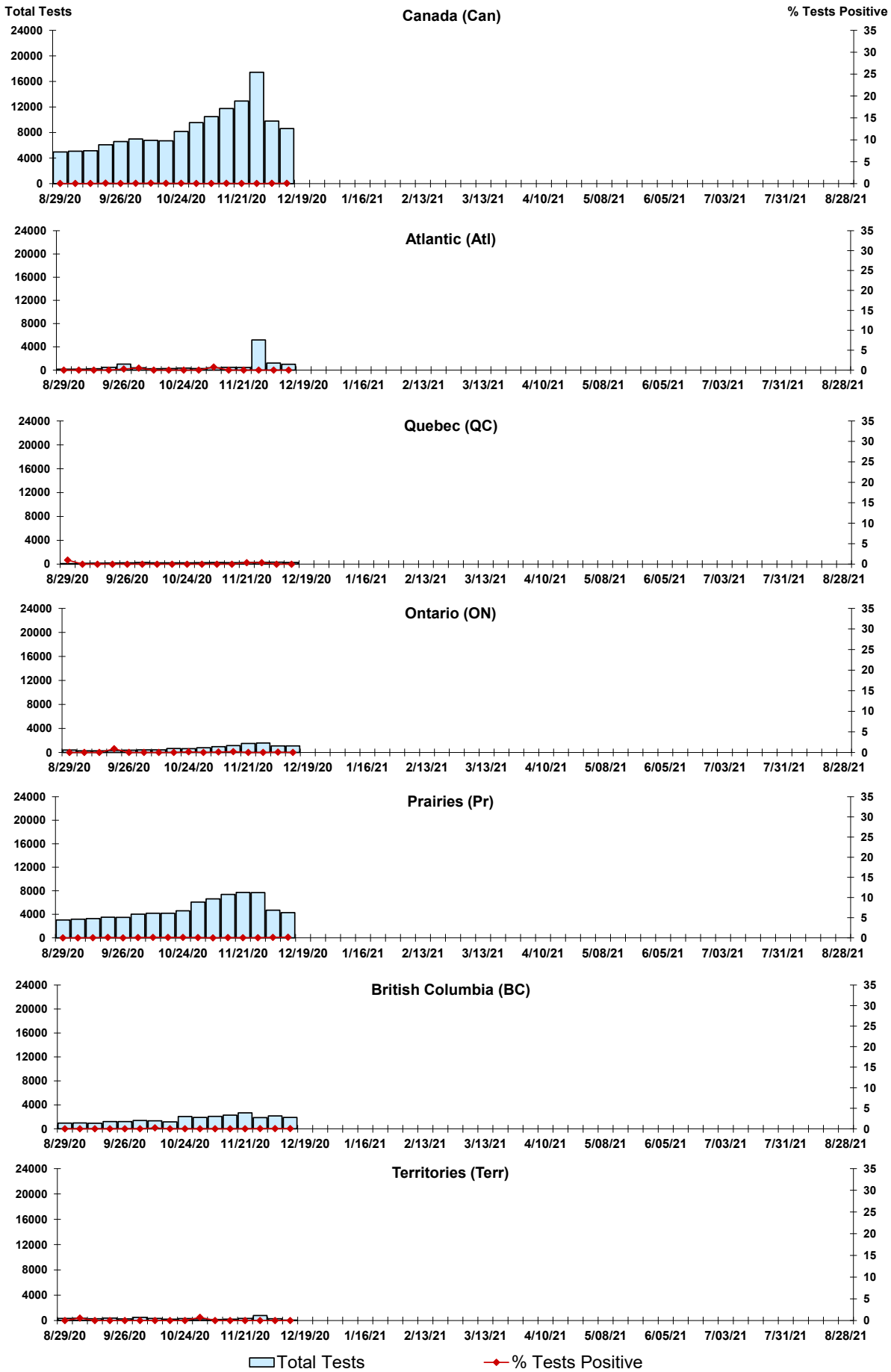
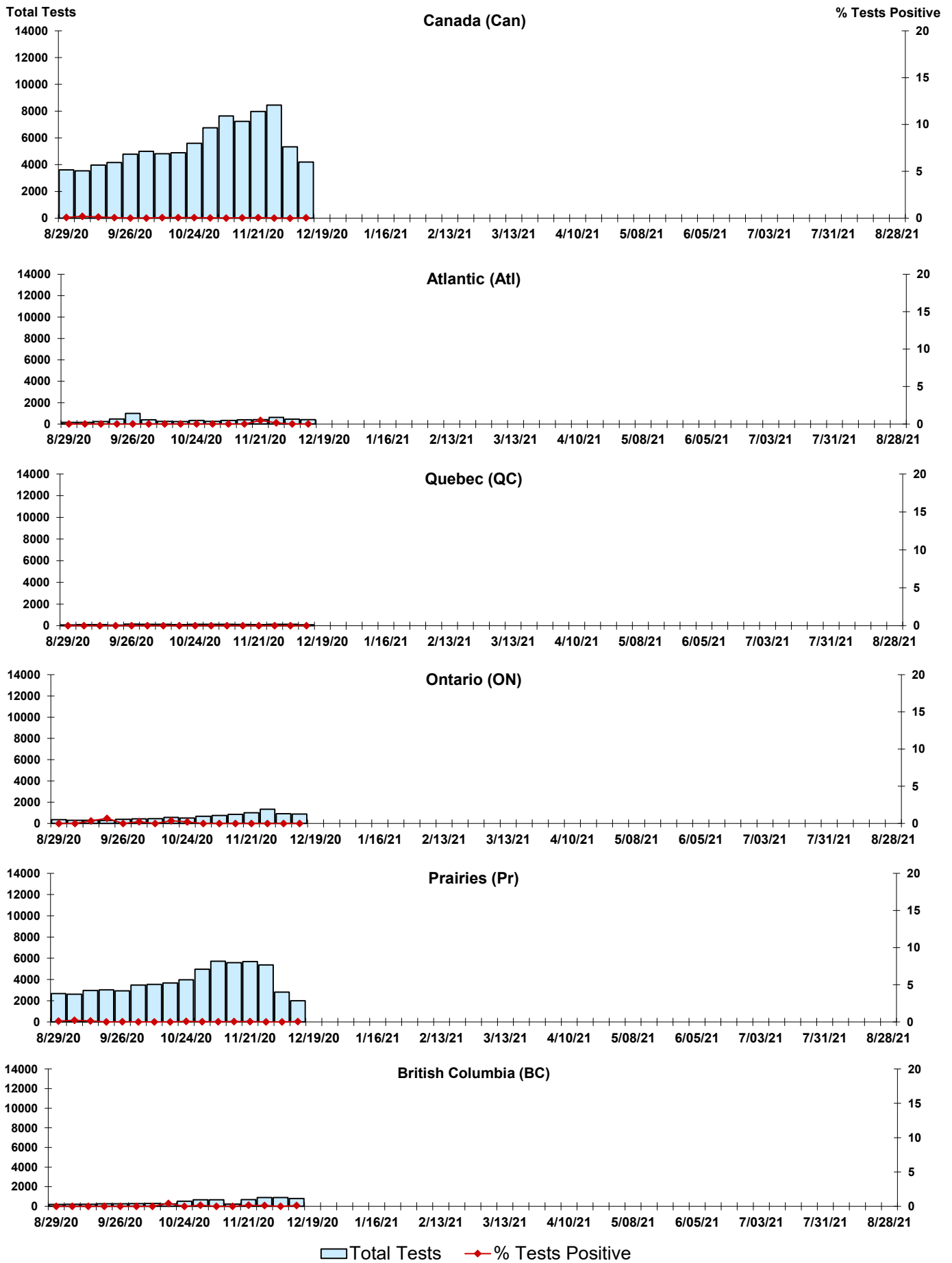


Figure 4: Positive Parainfluenza (PIV) Tests (%) in Canada by Region by Week of Report



Legend: Total Tests (light blue bar), % Tests Positive (red diamond with line)

Figure 5: Positive Adenovirus (adeno) Tests (%) in Canada by Region by Week of Report

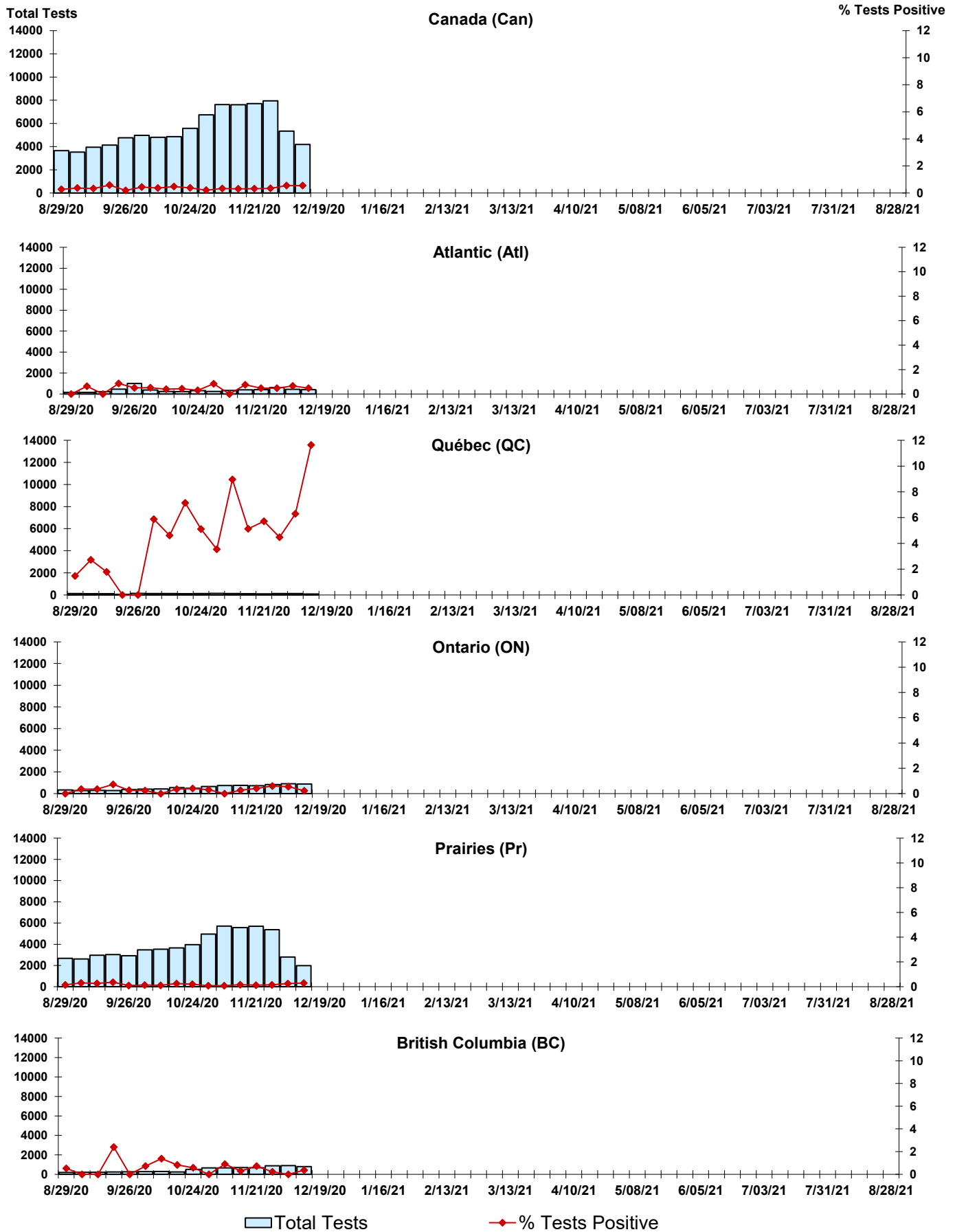


Figure 6: Positive human metapneumovirus (hMPV) Tests (%) in Canada by Region by Week of Report

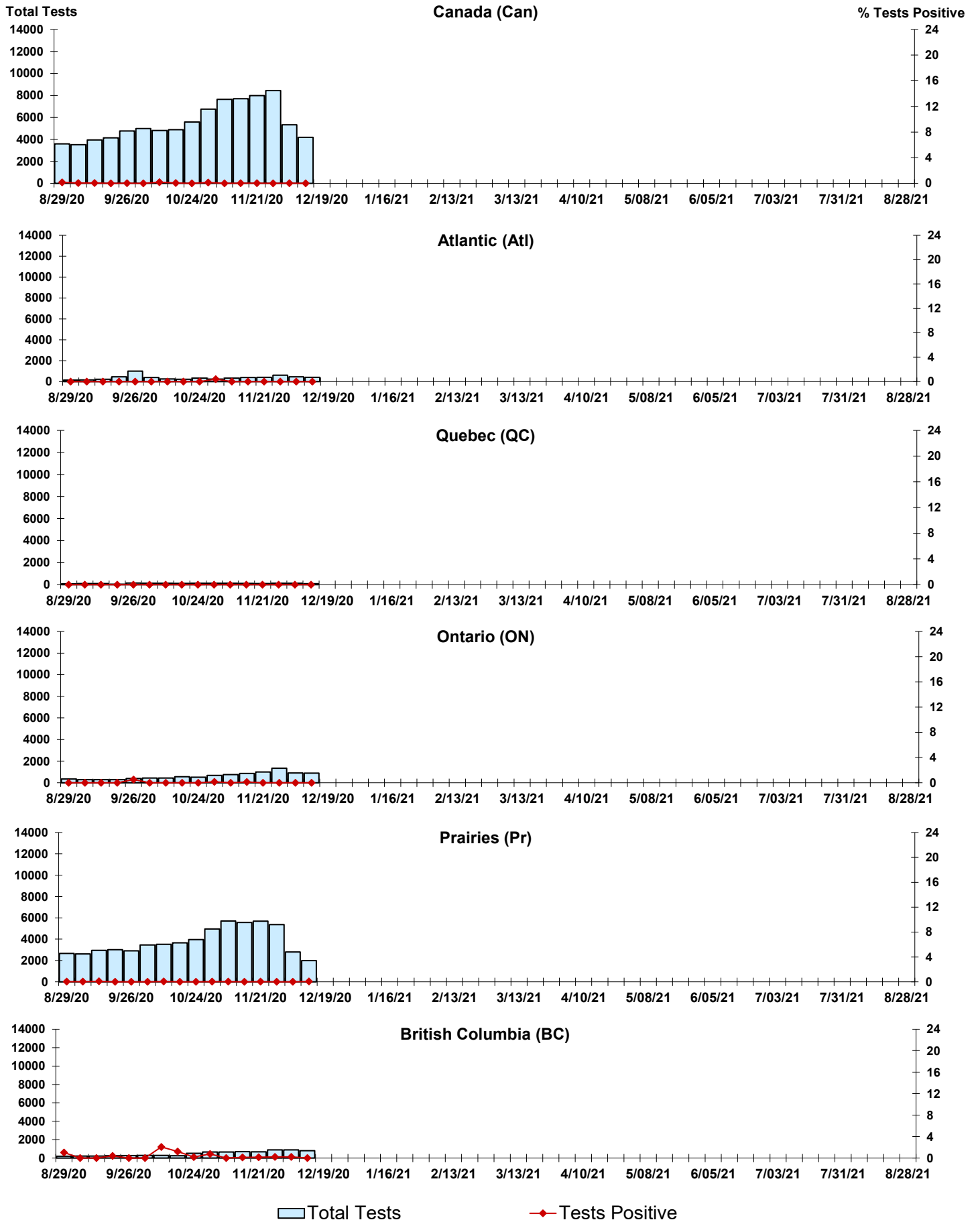


Figure 7: Positive Enterovirus/Rhinovirus (entero/rhino) Tests (%) in Canada by Region by Week of Report

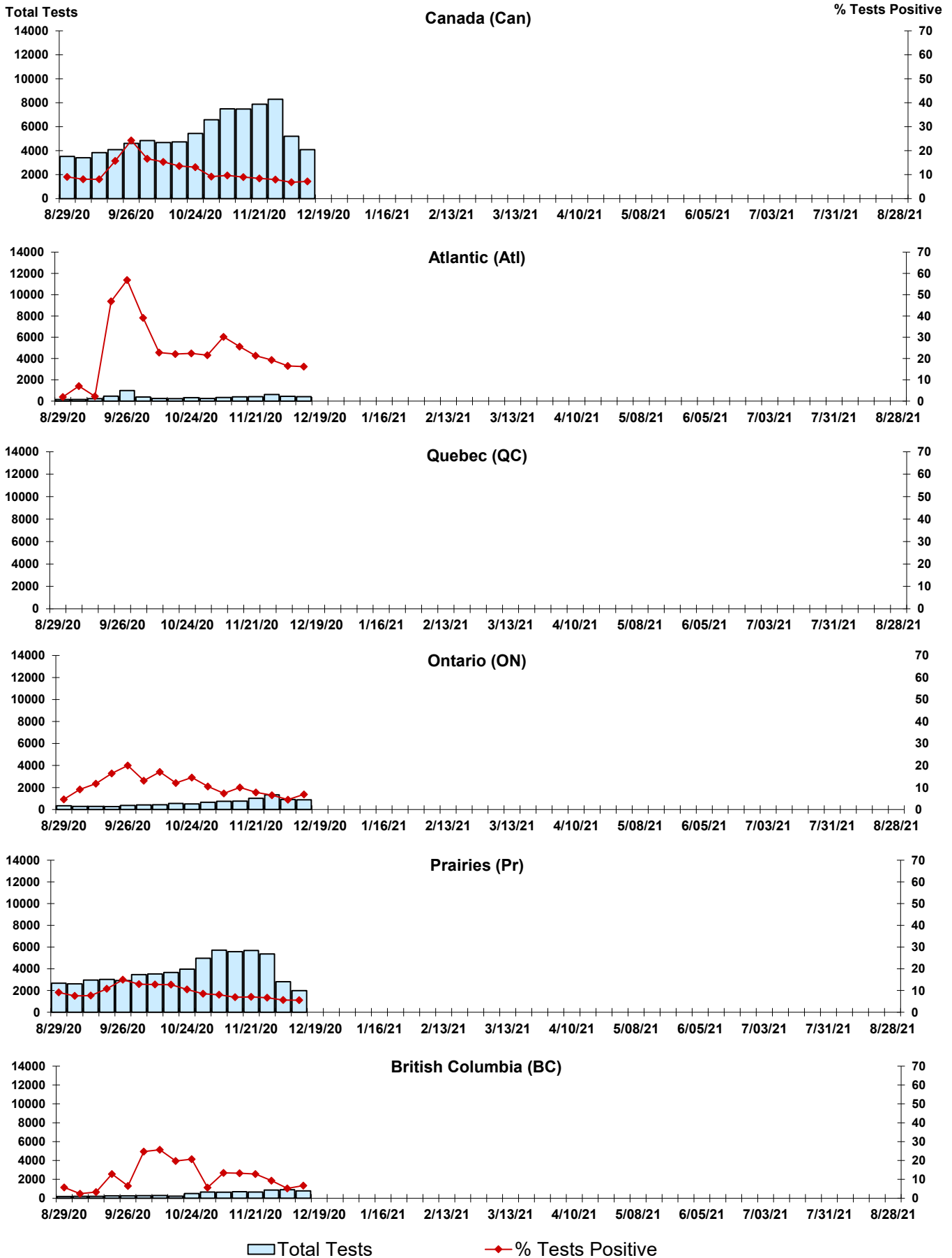
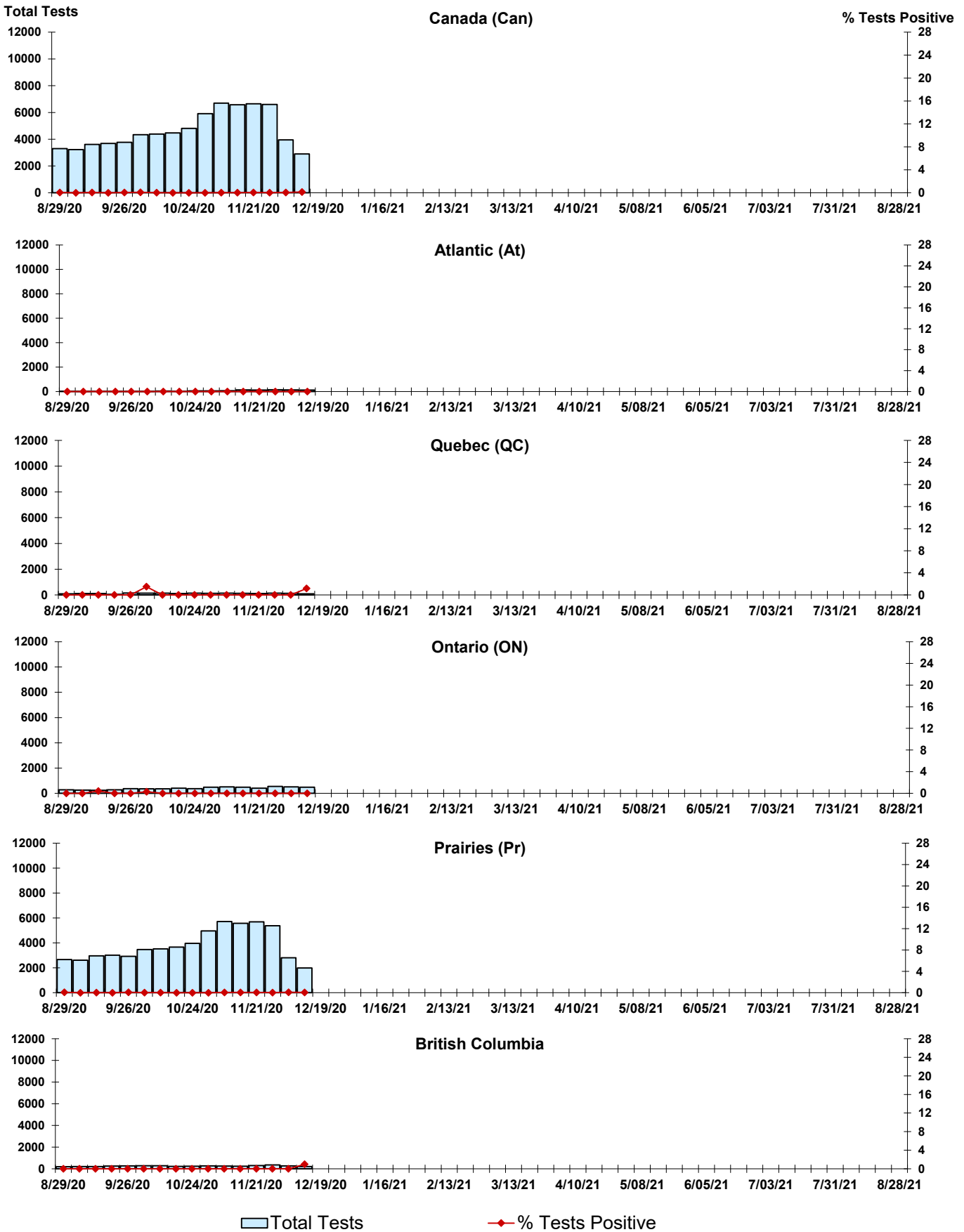


Figure 8: Positive Coronavirus (coron) Tests (%) in Canada by Region by Week of Report



Abbreviations:

A(H1N1)pdm09: Influenza A(H1N1)pdm09

A(H3): Influenza A(H3N2)

A (UnS): Influenza A (Unsubtyped)

Adeno: Adenovirus

CHEO: Children's Hospital of Eastern Ontario

Coron: Coronavirus

Enterovirus: Enterovirus

hMPV: human metapneumovirus

HSC: Health Sciences Centre

N.A.: Not Applicable

P.H.L.: Public Health Laboratory

P.H.O.L.: Public Health Ontario Laboratory

PIV: Parainfluenza

Rhino: Rhinovirus

RSV: Respiratory syncytial virus

UHN: University Health Network

Notes:

The data in the RVDSS report represent surveillance data available at the time of writing. Missing data are denoted by N.A.

Specimens from Yukon (YT), Northwest Territories (NT) and Nunavut (NU) are sent to reference laboratories in other provinces. Results reported for the Territories reflect the number of specimens that are identified as originating from YT, NT or NU.

Delays in the reporting of data may cause data to change retrospectively.

Due to reporting delays, the sum of weekly report totals do not add up to cumulative totals.