

Respiratory Virus Report, Week 51 - ending December 19, 2020

The Respiratory Virus Detection Surveillance System collects data from select laboratories across Canada on the number of tests performed and the number of tests positive for influenza and other respiratory viruses. Data are reported on a weekly basis year-round to the Centre for Immunization and Respiratory Infectious Diseases (CIRID), Public Health Agency of Canada. These data are also summarized in the weekly FluWatch report.

In this Respiratory Virus Report, the number of detections of coronavirus reflects only seasonal human coronaviruses, not the novel pandemic coronavirus (SARS-CoV2) that causes COVID-19. For information on COVID-19, see the [Coronavirus disease \(COVID-19\): Outbreak](#)

Table 1: Respiratory Virus Detections/Isolations for the week ending December 19, 2020 (Reporting Week 202051)

Reporting Laboratory	Flu Tested	A(H1N1)pdm09 Positive	A(H3) Positive	A(UnS) Positive	Total Flu A Positive	Total Flu B Positive	RSV Tested	RSV Positive	PIV Tested	PIV 1 Positive	PIV 2 Positive	PIV 3 Positive	PIV 4 Positive	Other PIV Positive	Adeno Tested	Adeno Positive	hMPV Tested	hMPV Positive	Entero/Rhino Tested	Entero/Rhino Positive	Coron Tested	Coron Positive
Newfoundland	470	0	0	0	0	0	470	0	470	1	0	0	0	0	471	2	470	0	470	52	N.A.	N.A.
Prince Edward Island	60	0	0	0	0	0	60	0	60	0	0	0	0	0	60	1	60	0	60	6	60	0
Nova Scotia	56	0	0	0	0	0	56	0	19	0	0	0	0	0	19	0	19	0	19	4	19	0
New Brunswick	2632	0	0	0	0	1	417	0	20	0	0	0	0	0	20	0	20	0	20	0	20	0
Atlantic	3218	0	0	0	0	1	1003	0	569	1	0	0	0	0	570	3	569	0	569	62	99	0
Région Nord-Est	178	0	0	0	0	0	42	0	0	0	0	0	0	0	0	0	0	0	N.A.	N.A.	0	0
Québec-Chaudière-Appalaches	27	0	0	0	0	0	24	0	12	0	0	0	0	0	12	1	12	0	N.A.	N.A.	12	0
Centre-du-Québec	41	0	0	0	0	0	41	0	17	0	0	0	0	0	17	0	17	0	N.A.	N.A.	17	0
Montréal-Laval	335	0	0	0	0	0	334	0	293	0	0	0	0	0	293	7	293	0	N.A.	N.A.	293	0
Ouest du Québec	53	0	0	0	0	0	51	0	0	0	0	0	0	0	0	0	0	0	N.A.	N.A.	0	0
Montérégie	0	0	0	0	0	0	0	0	0	0	0	0	0	0	0	0	0	0	N.A.	N.A.	0	0
Province of Québec	634	0	0	0	0	0	492	0	322	0	0	0	0	0	322	8	322	0	N.A.	N.A.	322	0
P.H.O.L. - Ottawa	24	0	0	0	0	0	24	0	24	0	0	0	0	0	24	0	23	0	24	0	23	0
CHEO - Ottawa	205	0	0	0	0	0	205	0	26	0	0	0	0	0	26	2	26	0	26	3	26	0
P.H.O.L. - Kingston	45	0	0	0	0	0	45	0	26	0	0	0	0	0	26	0	25	0	26	0	25	0
UHN / Mount Sinai Hospital	485	0	0	0	0	0	485	0	472	0	0	0	1	0	472	2	472	1	472	5	472	1
P.H.O.L. - Toronto	212	0	0	0	0	0	212	0	212	0	0	0	0	0	212	0	212	0	212	4	212	0
Sick Kids Hospital - Toronto	0	0	0	0	0	0	0	0	0	0	0	0	0	0	0	0	0	0	0	0	0	0
Sunnybrook & Women's College HSC	0	0	0	0	0	0	0	0	0	0	0	0	0	0	0	0	0	0	0	0	0	0
P.H.O.L. - Sault Ste. Marie	8	0	0	0	0	0	8	0	8	0	0	0	0	0	8	0	8	0	8	0	8	0
P.H.O.L. - Timmins	30	0	0	0	0	0	30	0	5	0	0	0	0	0	5	0	4	0	5	0	4	0
St. Joseph's - London	0	0	0	0	0	0	0	0	0	0	0	0	0	0	0	0	0	0	0	0	0	0
P.H.O.L. - London	94	0	0	0	0	0	94	0	88	0	0	0	0	0	88	0	88	0	88	7	88	0
P.H.O.L. - Orillia	22	0	0	0	0	0	22	0	22	0	0	0	0	0	22	0	22	0	22	1	22	0
P.H.O.L. - Thunder Bay	5	0	0	0	0	0	5	0	5	0	0	0	0	0	5	0	5	0	5	1	5	0
P.H.O.L. - Sudbury	28	0	0	0	0	0	28	0	28	0	0	0	0	0	28	0	28	0	28	2	28	0
P.H.O.L. - Hamilton	72	0	0	0	0	0	72	1	70	0	0	0	0	0	70	0	70	0	70	4	70	0
P.H.O.L. - Peterborough	8	0	0	0	0	0	7	0	6	0	0	0	0	0	6	0	6	0	6	0	6	0
St. Joseph's - Hamilton	445	0	0	0	0	0	445	0	445	0	0	0	0	0	445	3	445	0	445	29	0	0
Province of Ontario	1683	0	0	0	0	0	1682	1	1437	0	0	0	1	0	1437	7	1434	1	1437	56	989	1
Province of Manitoba	2041	0	0	0	0	0	2041	5	75	0	0	0	0	0	75	0	70	0	75	1	70	0
Province of Saskatchewan	263	0	0	0	0	0	263	0	49	0	0	0	0	0	49	0	49	0	49	2	49	0
Province of Alberta	3629	0	0	1	1	0	1397	0	1397	0	0	0	0	0	1397	3	1397	0	1397	66	1397	0
Prairies	5933	0	0	1	1	0	3701	5	1521	0	0	0	0	0	1521	3	1516	0	1521	69	1516	0
British Columbia	1358	0	0	0	0	0	1358	0	273	0	0	0	0	0	273	1	273	1	264	16	264	1
Yukon	0	0	0	0	0	0	0	0	N.A.	N.A.	N.A.	N.A.	N.A.	N.A.	N.A.	N.A.	N.A.	N.A.	N.A.	N.A.	N.A.	N.A.
Northwest Territories	14	0	0	0	0	0	12	0	12	0	0	0	0	0	12	0	12	0	12	4	12	0
Nunavut	5	0	0	0	0	0	4	0	4	0	0	0	0	0	4	1	4	0	4	0	3	0
Territories	19	0	0	0	0	0	16	0	16	0	0	0	0	0	16	1	16	0	16	4	15	0
CANADA	12845	0	0	1	1	1	8252	6	4138	1	0	0	1	0	4139	23	4130	2	3807	207	3205	2

The data in the RVDSS report represent surveillance data available at the time of writing. Missing data are denoted by N.A.

Specimens from Yukon (YT), Northwest Territories (NT) and Nunavut (NU) are sent to reference laboratories in other provinces and reported results reflect specimens identified as originating from YT, NT or NU.

Results from British Columbia comprise of specimens from the following sites: BC Children's and Women's Hospital, Children's and Women's Hospital Laboratory, Fraser Health Medical Microbiology Laboratory, Island Health, Providence Health Care, Powell River Hospital, St. Paul's Hospital, Vancouver General Hospital, Victoria General Hospital, Victoria Coastal Health, BCCDC Public Health Laboratory, Interior Health Authority sites and Northern Health Authority sites.

Delays in the reporting of data may cause data to change retrospectively.

Table 2: Respiratory Virus Detections/Isolations for the period August 23, 2020 - December 19, 2020 (Reporting Weeks 202035-202051)

Reporting Laboratory	Flu Tested	A(H1N1)pdm09 Positive	A(H3) Positive	A(UnS) Positive	Total Flu A Positive	Total Flu B Positive	RSV Tested	RSV Positive	PIV Tested	PIV 1 Positive	PIV 2 Positive	PIV 3 Positive	PIV 4 Positive	Other PIV Positive	Adeno Tested	Adeno Positive	hMPV Tested	hMPV Positive	Entero/Rhino Tested	Entero/Rhino Positive	Coron Tested	Coron Positive
Newfoundland	5471	0	0	0	0	0	5471	6	5471	1	0	1	0	0	5474	20	5471	1	5471	1610	N.A.	N.A.
Prince Edward Island	629	0	0	0	0	0	629	2	625	2	0	0	0	0	625	6	625	0	625	116	625	0
Nova Scotia	656	0	0	0	0	0	658	0	249	0	0	0	0	0	249	3	249	0	249	43	249	0
New Brunswick	16622	0	0	0	0	1	6554	0	309	0	0	0	0	0	300	4	300	0	300	40	255	0
Atlantic	23378	0	0	0	0	1	13312	8	6654	3	0	1	0	0	6648	33	6645	1	6645	1809	1129	0
Région Nord-Est	910	0	0	0	0	0	510	1	0	0	0	0	0	0	0	0	0	0	N.A.	N.A.	0	0
Québec-Chaudière-Appalaches	367	0	0	1	1	0	405	0	260	0	0	0	0	0	262	15	257	0	N.A.	N.A.	240	0
Centre-du-Québec	326	0	0	0	0	0	331	1	123	0	0	0	0	0	121	8	123	0	N.A.	N.A.	120	0
Montréal-Laval	2613	0	0	0	0	0	2494	1	1805	0	0	0	0	0	1859	74	1795	0	N.A.	N.A.	1795	3
Ouest du Québec	443	0	0	0	0	0	411	0	0	0	0	0	0	0	0	0	0	0	N.A.	N.A.	0	0
Montérégie	0	0	0	0	0	0	0	0	0	0	0	0	0	0	0	0	0	0	N.A.	N.A.	0	0
Province of Québec	4659	0	0	1	1	0	4151	3	2188	0	0	0	0	0	2242	97	2175	0	N.A.	N.A.	2155	3
P.H.O.L. - Ottawa	265	0	0	0	0	0	265	1	256	0	0	0	0	0	256	0	255	0	256	13	255	0
CHEO - Ottawa	2222	0	0	1	1	1	1819	4	368	0	0	0	0	0	368	4	368	0	368	36	368	0
P.H.O.L. - Kingston	475	0	0	1	1	0	475	0	376	0	0	0	0	0	376	2	372	0	376	94	372	0
UHN / Mount Sinai Hospital	2989	1	0	0	1	1	2989	1	2716	0	2	1	2	0	1090	3	2676	5	2473	45	512	1
P.H.O.L. - Toronto	2891	0	0	0	0	0	2888	2	2887	0	0	0	0	2	2888	8	2886	0	2887	124	2886	2
Sick Kids Hospital - Toronto	0	0	0	0	0	0	0	0	0	0	0	0	0	0	0	0	0	0	0	0	0	0
Sunnybrook & Women's College HSC	0	0	0	0	0	0	0	0	0	0	0	0	0	0	0	0	0	0	0	0	0	0
P.H.O.L. - Sault Ste. Marie	73	0	0	2	2	0	71	0	70	0	0	0	0	0	70	0	70	0	70	3	70	0
P.H.O.L. - Timmins	295	0	0	0	0	0	295	0	118	0	0	0	0	0	118	0	117	0	118	26	117	0
St. Joseph's - London	218	0	0	0	0	0	218	0	55	0	0	0	0	0	55	0	55	0	91	8	36	0
P.H.O.L. - London	1063	1	0	5	6	2	1053	0	965	0	0	0	0	2	965	2	961	0	965	113	961	0
P.H.O.L. - Orillia	166	0	0	1	1	0	164	0	162	0	0	0	0	0	162	0	162	0	162	12	162	0
P.H.O.L. - Thunder Bay	303	0	0	0	0	0	303	0	303	0	0	0	0	0	304	2	303	0	303	125	303	0
P.H.O.L. - Sudbury	230	0	0	0	0	0	228	0	226	0	0	0	0	0	226	1	226	0	226	19	226	0
P.H.O.L. - Hamilton	917	0	0	0	0	0	874	1	828	0	0	0	0	0	828	2	828	0	828	84	828	0
P.H.O.L. - Peterborough	269	0	0	1	1	0	223	0	211	0	0	0	0	0	211	0	211	0	211	18	211	0
St. Joseph's - Hamilton	3119	0	0	0	0	0	3119	0	3119	0	0	0	0	0	3119	13	3119	0	3119	292	0	0
Province of Ontario	15495	2	0	11	13	4	14984	9	12660	0	2	1	2	4	11036	37	12609	5	12453	1012	7307	3
Manitoba	19798	0	0	0	0	1	19798	48	1645	0	1	1	0	0	1645	12	1552	1	1645	114	1552	1
Province of Saskatchewan	2064	0	0	0	0	0	2064	2	995	0	0	0	0	0	995	8	995	0	995	115	995	0
Province of Alberta	68953	0	0	3	3	0	60319	0	60319	2	17	1	3	0	60319	90	60319	10	60319	5366	60319	17
Prairies	90815	0	0	3	3	1	82181	50	62959	2	18	2	3	0	62959	110	62866	11	62959	5595	62866	18
British Columbia	27384	1	2	4	7	5	27382	5	7559	0	2	0	3	0	8025	37	8025	25	7881	861	4285	3
Yukon	3404	0	0	8	8	7	3357	4	N.A.	N.A.	N.A.	N.A.	N.A.	N.A.	N.A.	N.A.	N.A.	N.A.	N.A.	N.A.	N.A.	N.A.
Northwest Territories	736	0	0	0	0	0	734	0	734	0	0	0	1	0	734	5	734	1	734	230	734	0
Nunavut	1067	0	0	0	0	0	1066	0	1066	3	1	0	0	0	1066	25	1066	5	1066	277	173	0
Territories	5207	0	0	8	8	7	5157	4	1800	3	1	0	1	0	1800	30	1800	6	1800	507	907	0
CANADA	166938	3	2	27	32	18	147167	79	93820	8	23	4	9	4	92710	344	94120	48	91738	9784	78649	27

The data in the RVDSS report represent surveillance data available at the time of writing. Missing data are denoted by N.A.

Specimens from YT, NT and NU are sent to reference laboratories in other provinces and reported results reflect specimens identified as originating from YT, NT or NU.

Results from British Columbia comprise of specimens from the following sites: BC Children's and Women's Hospital, Children's and Women's Hospital Laboratory, Fraser Health Medical Microbiology Laboratory, Island Health, Providence Health Care, Powell River Hospital, St. Paul's Hospital, Vancouver General Hospital, Victoria General Hospital, Victoria Coastal Health, BCCDC Public Health Laboratory, Interior Health Authority sites and Northern Health Authority sites.

Delays in the reporting of data may cause data to change retrospectively.

Due to reporting delays, the sum of weekly report totals do not add up to cumulative totals.

Figure 1: Number positive laboratory tests for other respiratory viruses by report week, Canada, 2020-21

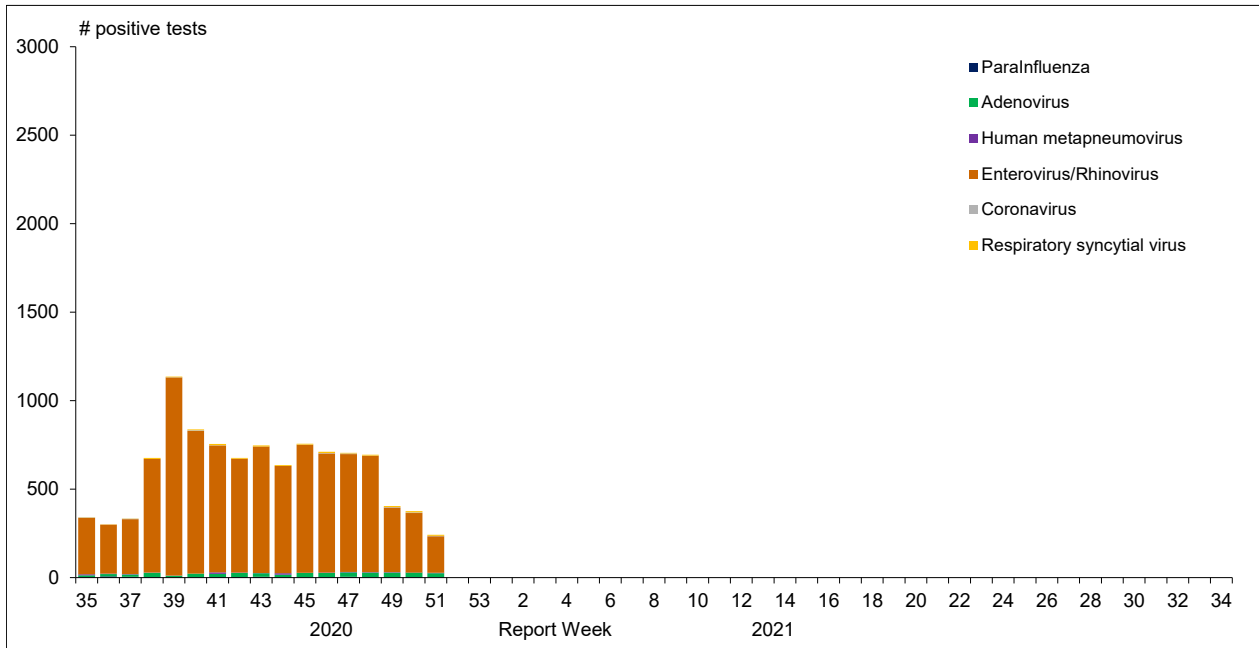


Figure 2 : Positive Influenza Tests (%) in Canada by Region by Week of Report

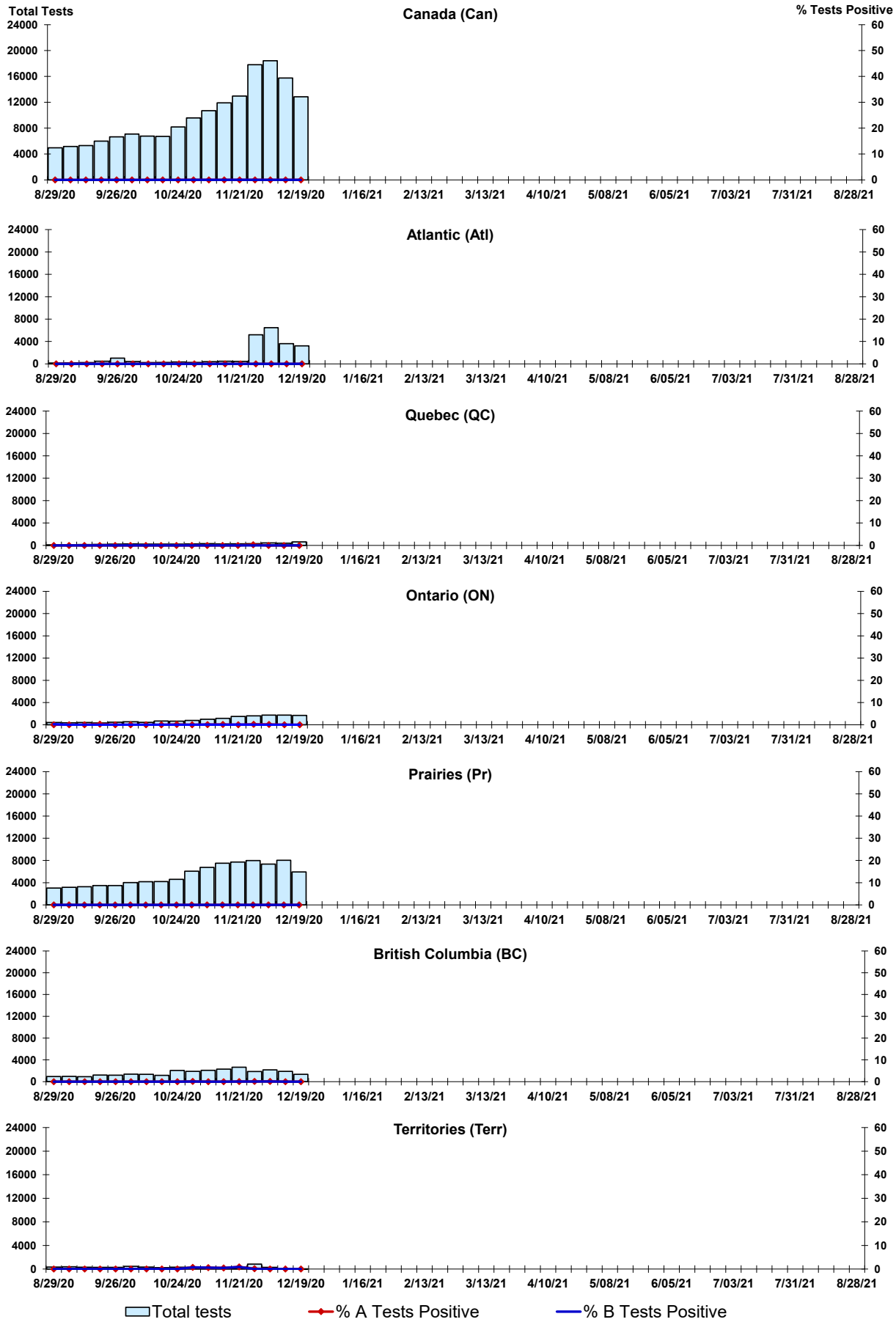


Figure 3: Positive Respiratory syncytial virus (RSV) Tests (%) in Canada by Region by Week of Report

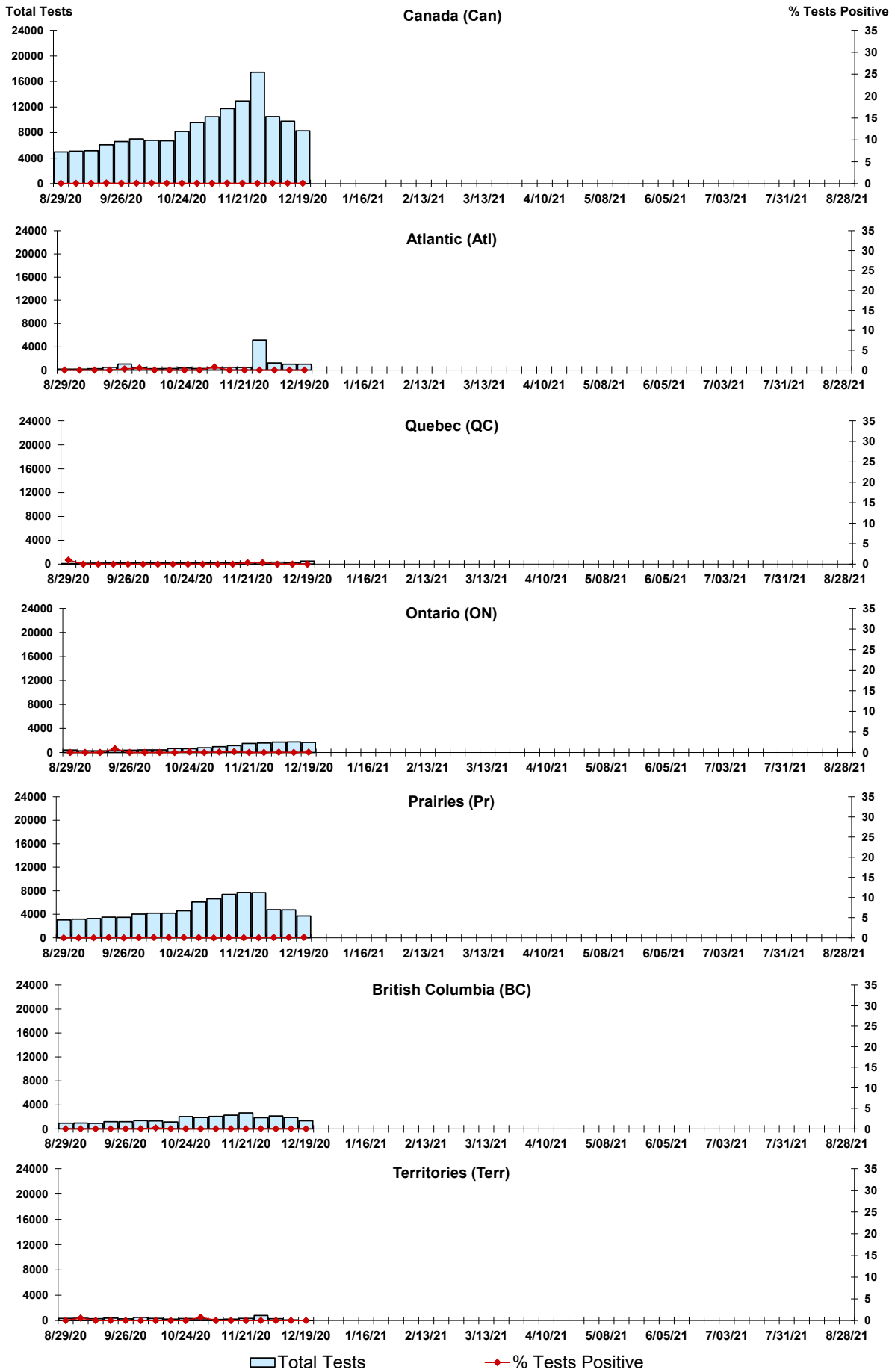


Figure 4: Positive Parainfluenza (PIV) Tests (%) in Canada by Region by Week of Report

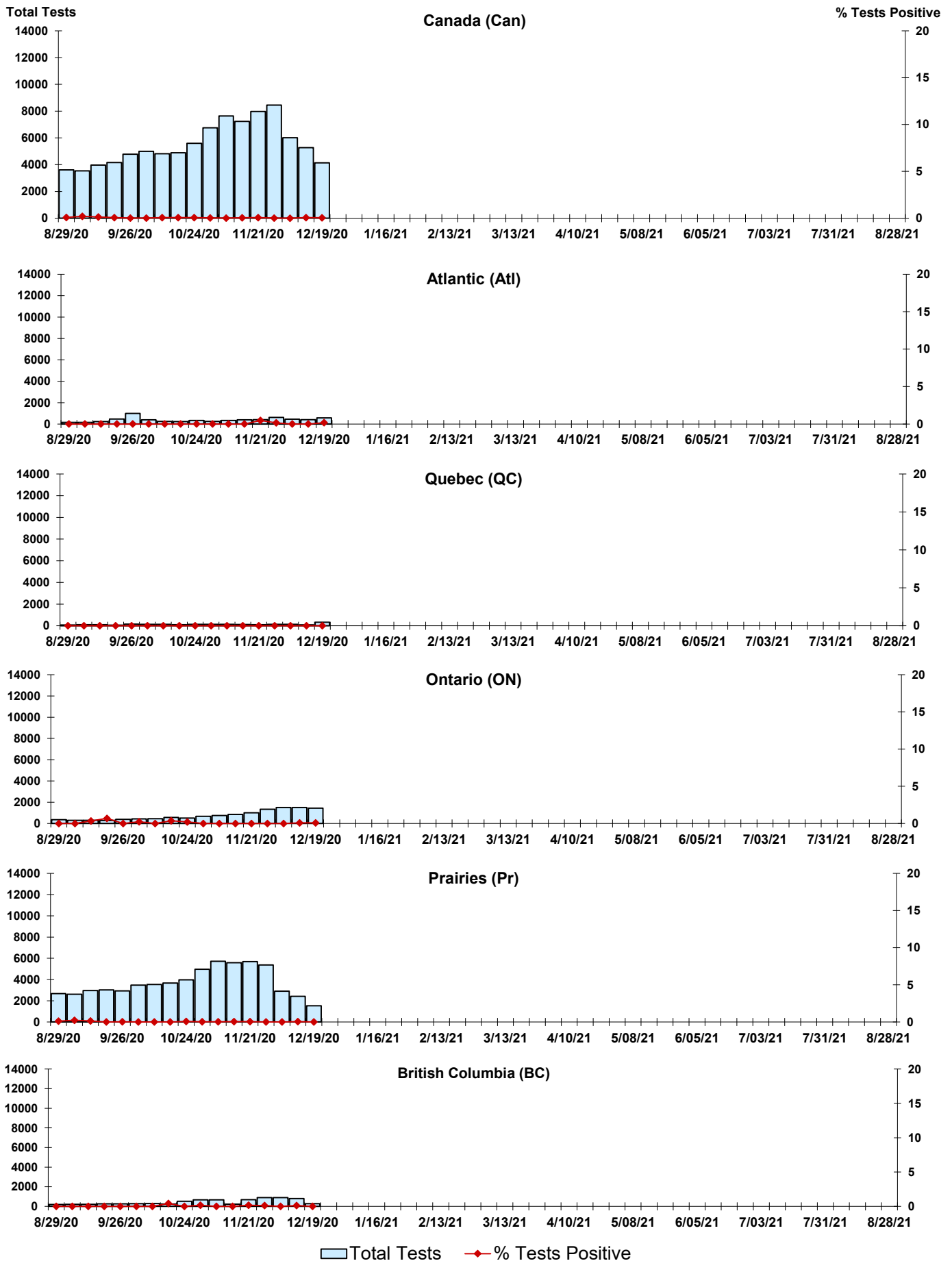


Figure 5: Positive Adenovirus (adeno) Tests (%) in Canada by Region by Week of Report

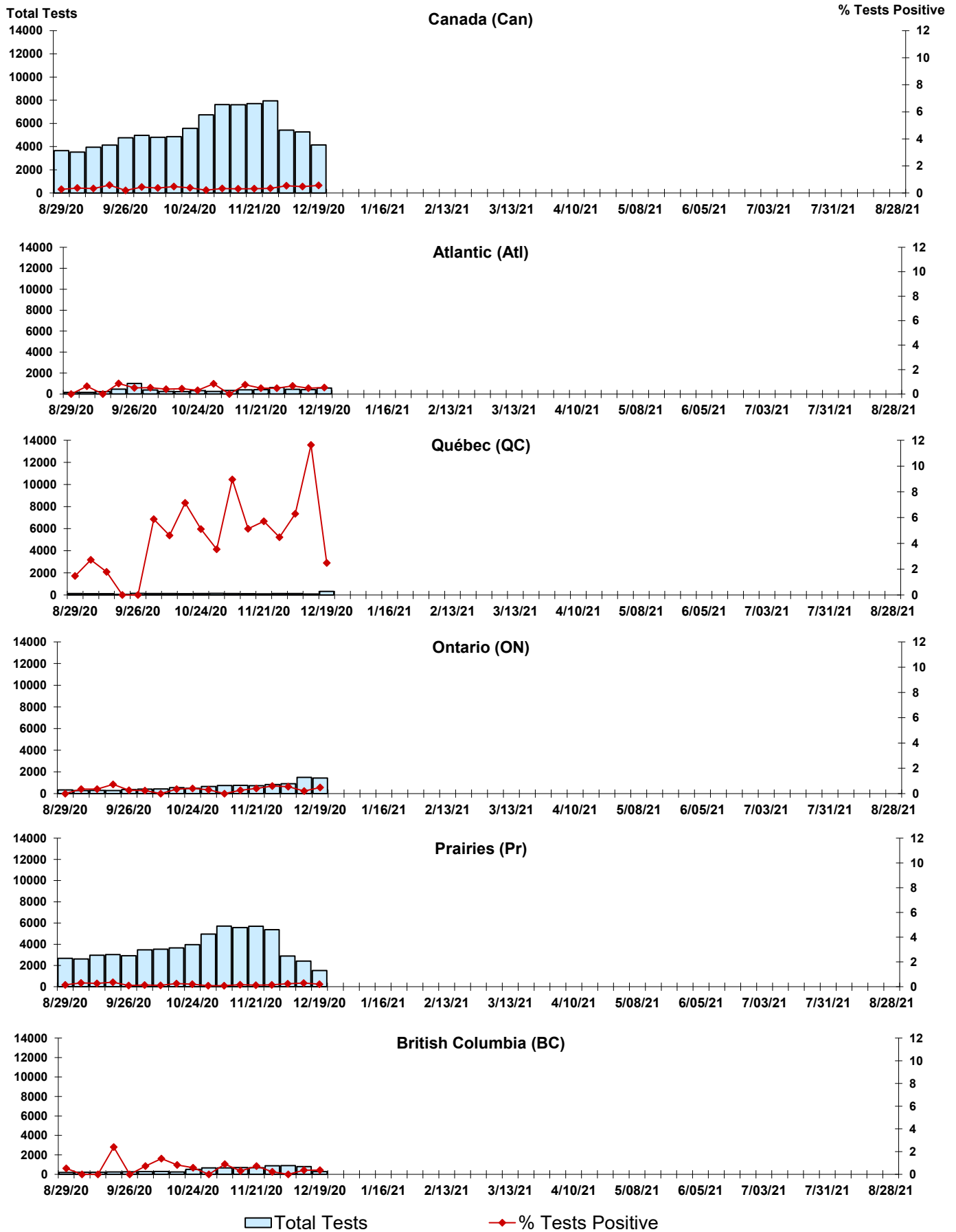
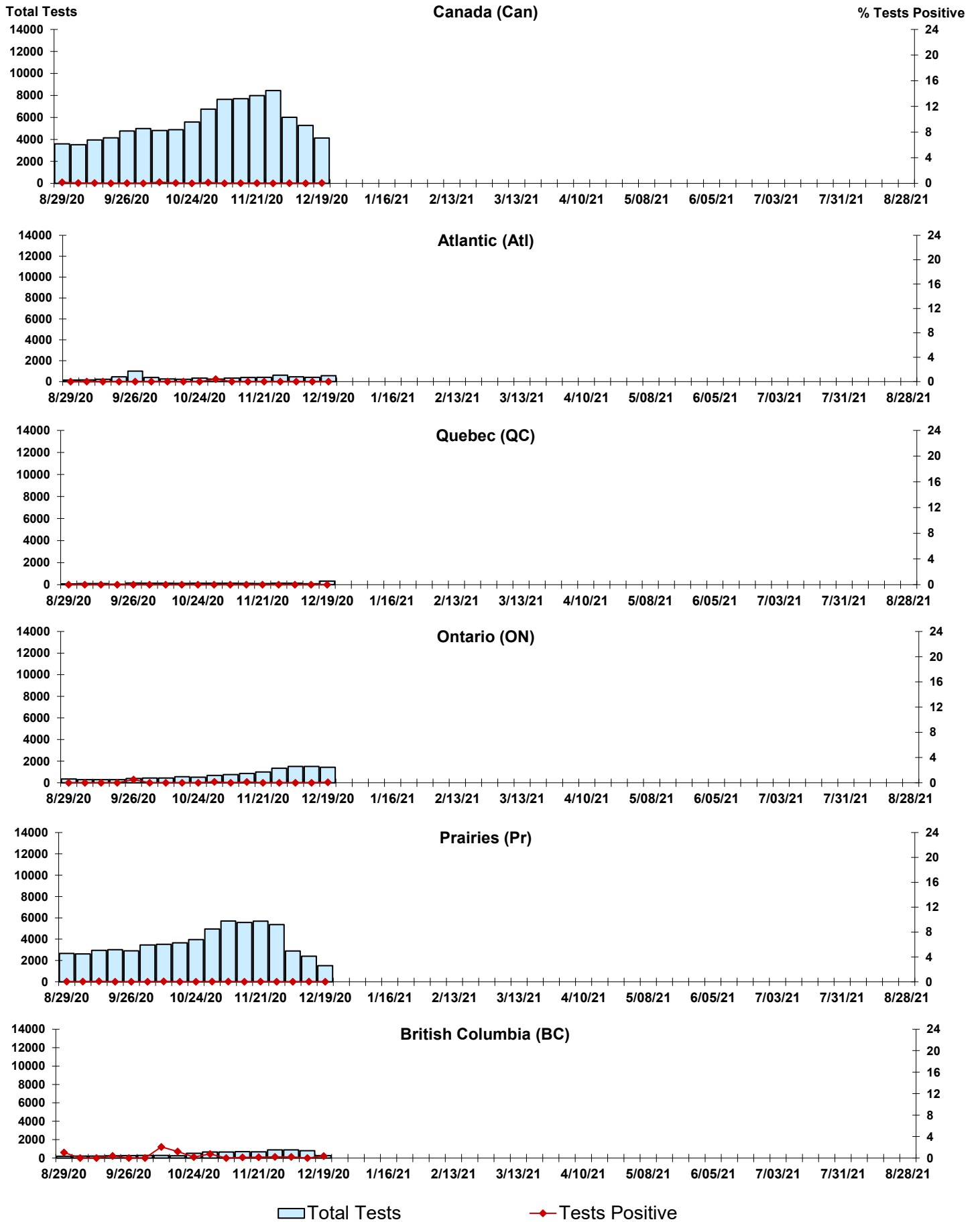


Figure 6: Positive human metapneumovirus (hMPV) Tests (%) in Canada by Region by Week of Report



Legend: Total Tests (light blue bar), Tests Positive (red line with diamond)

Figure 7: Positive Enterovirus/Rhinovirus (entero/rhino) Tests (%) in Canada by Region by Week of Report

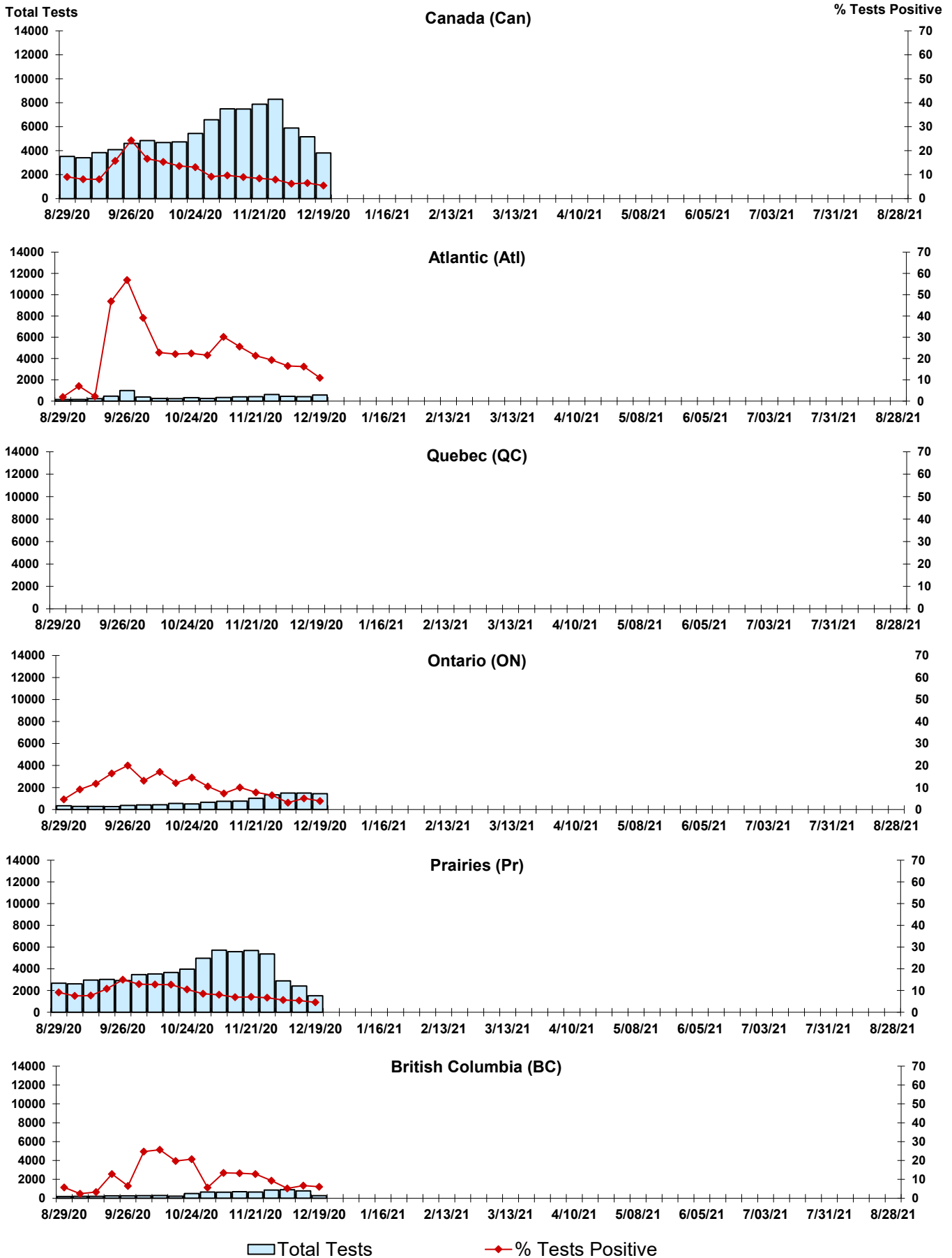
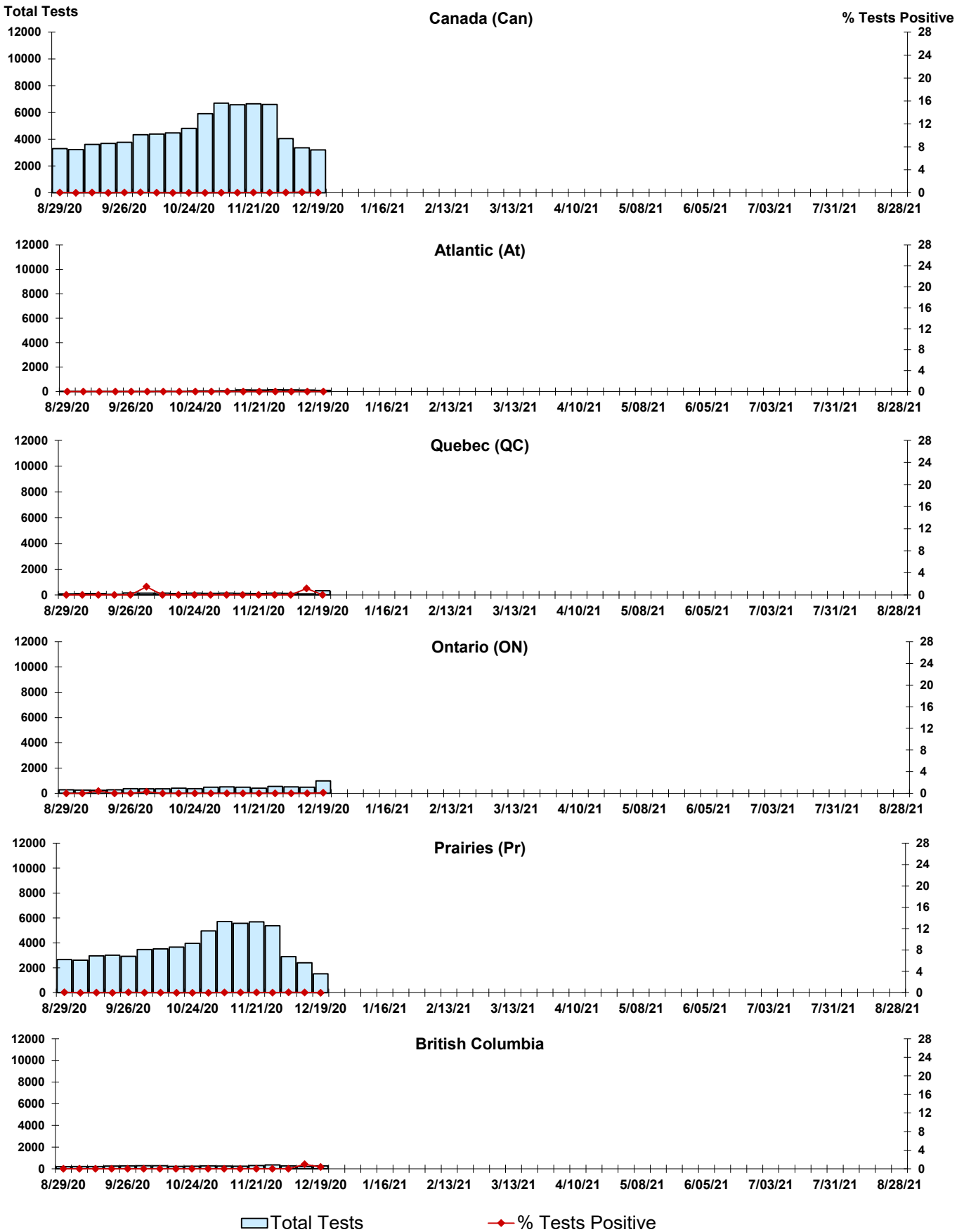


Figure 8: Positive Coronavirus (coron) Tests (%) in Canada by Region by Week of Report



Abbreviations:

A(H1N1)pdm09: Influenza A(H1N1)pdm09

A(H3): Influenza A(H3N2)

A (UnS): Influenza A (Unsubtyped)

Adeno: Adenovirus

CHEO: Children's Hospital of Eastern Ontario

Coron: Coronavirus

Enterovirus: Enterovirus

hMPV: human metapneumovirus

HSC: Health Sciences Centre

N.A.: Not Applicable

P.H.L.: Public Health Laboratory

P.H.O.L.: Public Health Ontario Laboratory

PIV: Parainfluenza

Rhino: Rhinovirus

RSV: Respiratory syncytial virus

UHN: University Health Network

Notes:

The data in the RVDSS report represent surveillance data available at the time of writing. Missing data are denoted by N.A.

Specimens from Yukon (YT), Northwest Territories (NT) and Nunavut (NU) are sent to reference laboratories in other provinces. Results reported for the Territories reflect the number of specimens that are identified as originating from YT, NT or NU.

Delays in the reporting of data may cause data to change retrospectively.

Due to reporting delays, the sum of weekly report totals do not add up to cumulative totals.