

Respiratory Virus Detections in Canada

Respiratory Virus Report, Week 07 - ending February 15, 2020

The Respiratory Virus Detection Surveillance System collects data from select laboratories across Canada on the number of tests performed and the number of tests positive for influenza and other respiratory viruses. Data are reported on a weekly basis year-round to the Centre for Immunization and Respiratory Infectious Diseases (CIRID), Public Health Agency of Canada. These data are also summarized in the weekly FluWatch report.

Table 1: Respiratory Virus Detections/Isolations for the week ending February 15, 2020 (Reporting Week 202007)

Reporting Laboratory	Flu Tested	A(H1N1)pdm09 Positive	A(H3) Positive	A(UnS) Positive	Total Flu A Positive	Total Flu B Positive	RSV Tested	RSV Positive	PIV Tested	PIV 1 Positive	PIV 2 Positive	PIV 3 Positive	PIV 4 Positive	Other PIV Positive	Adeno Tested	Adeno Positive	hMPV Tested	hMPV Positive	Entero/Rhino Tested	Entero/Rhino Positive	Coron Tested	Coron Positive
Newfoundland	0	0	0	0	0	0	0	0	0	0	0	0	0	0	0	0	0	0	0	0	N.A.	N.A.
Prince Edward Island	94	0	0	22	22	15	94	16	4	0	0	0	1	0	4	0	4	0	4	0	4	0
Nova Scotia	186	0	0	6	6	20	197	52	12	0	0	0	0	0	12	0	12	1	12	1	12	1
New Brunswick	654	9	2	69	80	131	654	56	88	1	0	0	0	0	88	0	88	1	88	3	88	3
Atlantic	934	9	2	97	108	166	945	124	104	1	0	0	1	0	104	0	104	2	104	4	104	4
Région Nord-Est	549	0	0	68	68	202	509	52	0	0	0	0	0	0	0	0	0	0	N.A.	N.A.	0	0
Québec-Chaudière-Appalaches	1203	0	0	203	203	269	1168	137	113	0	0	0	0	0	113	0	78	0	N.A.	N.A.	76	2
Centre-du-Québec	1245	0	0	229	229	246	950	125	0	0	0	0	0	0	0	0	0	0	N.A.	N.A.	0	0
Montréal-Laval	1567	0	0	276	276	127	1485	139	595	1	0	1	1	0	595	20	595	20	N.A.	N.A.	595	7
Ouest du Québec	730	0	0	186	186	88	684	67	0	0	0	0	0	0	0	0	0	0	N.A.	N.A.	0	0
Montérégie	496	0	0	91	91	65	496	36	0	0	0	0	0	0	0	0	0	0	N.A.	N.A.	0	0
Province of Québec	5790	0	0	1053	1053	997	5292	556	708	1	0	1	1	0	708	20	673	20	N.A.	N.A.	671	9
P.H.O.L. - Ottawa	83	14	2	2	18	6	83	6	83	0	0	0	0	0	83	2	83	5	83	1	83	0
CHEO - Ottawa	317	0	0	40	40	31	317	29	22	0	0	0	0	0	22	1	22	3	22	7	22	0
P.H.O.L. - Kingston	35	2	0	1	3	3	35	0	35	0	0	0	0	0	35	0	35	5	35	2	35	0
UHN / Mount Sinai Hospital	362	0	0	17	17	14	362	18	21	1	0	0	0	0	0	0	21	0	0	0	N.A.	N.A.
P.H.O.L. - Toronto	640	52	9	3	64	19	620	23	620	0	0	0	0	0	620	7	618	19	620	33	618	0
Sick Kids Hospital - Toronto	99	1	0	12	13	17	46	2	46	0	1	1	0	0	46	2	46	1	46	7	46	1
Sunnybrook & Women's College HSC	76	0	0	6	6	2	76	1	0	0	0	0	0	0	76	1	76	1	76	2	0	0
P.H.O.L. - Sault Ste. Marie	16	0	0	0	0	1	16	2	16	0	0	0	0	0	16	0	16	1	16	1	16	0
P.H.O.L. - Timmins	13	4	0	0	4	1	10	1	11	0	0	0	0	0	11	0	11	0	11	0	11	0
St. Joseph's - London	166	0	0	8	8	10	166	18	38	0	1	0	0	0	38	1	38	0	15	2	15	0
P.H.O.L. - London	189	28	8	0	36	13	186	6	186	0	0	0	0	0	186	3	184	10	186	13	184	0
P.H.O.L. - Orillia	48	9	0	0	9	1	48	3	48	0	0	0	0	0	48	0	48	4	48	2	48	0
P.H.O.L. - Thunder Bay	26	8	0	1	9	7	26	1	26	0	0	0	0	0	26	0	26	0	26	0	26	0
P.H.O.L. - Sudbury	34	1	0	0	1	3	34	8	34	0	0	0	0	0	34	1	34	0	34	2	34	0
P.H.O.L. - Hamilton	134	21	2	1	24	5	127	12	127	0	0	0	0	0	127	4	127	1	127	12	127	0
P.H.O.L. - Peterborough	40	4	1	0	5	2	40	1	40	0	0	0	0	0	40	0	40	4	40	1	40	0
St. Joseph's - Hamilton	671	0	0	96	96	70	671	36	671	1	0	0	0	0	671	8	671	22	671	31	0	0
Province of Ontario	2949	144	22	187	353	205	2863	167	2024	2	2	1	0	0	2079	30	2096	76	2056	116	1305	1
Manitoba	582	9	6	83	98	39	564	46	105	3	1	0	1	0	105	0	87	1	105	4	87	5
Regina	433	0	0	79	79	64	433	52	209	5	0	0	1	0	209	2	209	13	209	21	209	11
Saskatoon	83	0	0	6	6	4	83	8	147	1	1	1	2	0	147	4	147	11	147	10	147	9
Saskatchewan	516	0	0	85	85	68	516	60	356	6	1	1	3	0	356	6	356	24	356	31	356	20
Alberta	1391	110	28	119	257	125	976	0	976	7	2	2	6	0	976	16	976	49	976	74	976	52
Prairies	2489	119	34	287	440	232	2056	106	1437	16	4	3	10	0	1437	22	1419	74	1437	109	1419	77
Province of British Columbia	1661	17	1	106	225	172	1656	122	202	1	0	1	1	0	202	4	202	10	183	27	183	16
Yukon	65	0	0	5	5	2	65	0	N.A.	N.A.	N.A.	N.A.	N.A.	N.A.	N.A.	N.A.	N.A.	N.A.	N.A.	N.A.	N.A.	N.A.
Northwest Territories	35	3	0	0	3	13	35	0	35	1	0	0	1	0	35	0	35	2	35	5	35	4
Nunavut	31	1	2	6	9	4	31	0	31	0	0	1	1	0	31	1	31	0	31	1	8	0
Territories	131	4	2	11	17	19	131	0	66	1	0	1	2	0	66	1	66	2	66	6	43	4
CANADA	13954	293	61	1741	2196	1791	12943	1075	4541	22	6	7	15	0	4596	77	4560	184	3846	262	3725	111

Specimens from Yukon (YT), Northwest Territories (NT) and Nunavut (NU) are sent to reference laboratories in other provinces and reported results reflect specimens identified as originating from YT, NT or NU.

Results from British Columbia comprise of specimens from the following sites: BC Children's and Women's Hospital, Children's and Women's Hospital Laboratory, Fraser Health Medical Microbiology Laboratory, Island Health, Providence Health Care, Powell River Hospital, St. Paul's Hospital, Vancouver General Hospital, Victoria General Hospital, Victoria Coastal Health, BCCDC Public Health Laboratory, Interior Health Authority sites and Northern Health Authority sites.

Delays in the reporting of data may cause data to change retrospectively.

For British Columbia, only data from subtyped influenza A specimens are included in the weekly number of influenza detections. The sum of A(H1N1)pdm09, A(H3), and A(UnS) positive results may not equal the sum of total Flu A positive results.

Table 2: Respiratory Virus Detections/Isolations for the period August 25, 2019 - February 15, 2020 (Reporting Weeks 201935-202007)

Reporting Laboratory	Flu Tested	A(H1N1)pdm09 Positive	A(H3) Positive	A(UnS) Positive	Total Flu A Positive	Total Flu B Positive	RSV Tested	RSV Positive	PIV Tested	PIV 1 Positive	PIV 2 Positive	PIV 3 Positive	PIV 4 Positive	Other PIV Positive	Adeno Tested	Adeno Positive	hMPV Tested	hMPV Positive	Entero/Rhino Tested	Entero/Rhino Positive	Coron Tested	Coron Positive
Newfoundland	2294	4	24	35	63	103	2294	169	2294	103	1	3	0	0	2294	76	2294	24	2294	282	N.A.	N.A.
Prince Edward Island	701	0	0	62	62	48	701	55	36	1	0	0	1	0	36	0	34	0	36	16	36	0
Nova Scotia	2068	2	1	65	68	96	2122	241	418	13	1	2	5	0	423	8	423	8	423	72	433	7
New Brunswick	6874	36	22	374	432	717	6815	750	1684	46	3	0	11	0	1684	50	1684	5	1684	250	1684	30
Atlantic	11937	42	47	536	625	964	11932	1215	4432	163	5	5	17	0	4437	134	4435	37	4437	620	2153	37
Région Nord-Est	5133	0	0	483	483	921	4401	261	0	0	0	0	0	0	0	0	0	0	N.A.	N.A.	0	0
Québec-Chaudière-Appalaches	9986	0	0	1124	1124	1386	10171	1009	2211	27	4	3	12	0	2250	74	1801	11	N.A.	N.A.	1751	26
Centre-du-Québec	13548	0	0	2063	2063	2032	11134	993	0	0	0	0	0	0	0	0	0	0	N.A.	N.A.	0	0
Montréal-Laval	29023	0	0	3062	3062	2187	28140	1877	13925	138	4	15	13	0	13925	465	13462	133	N.A.	N.A.	13772	206
Ouest du Québec	9227	0	0	1278	1278	1151	8652	815	0	0	0	0	0	0	0	0	0	0	N.A.	N.A.	0	0
Montérégie	6809	0	0	870	870	679	6714	527	0	0	0	0	0	0	0	0	0	0	N.A.	N.A.	0	0
Province of Québec	73726	0	0	8880	8880	8356	69212	5482	16136	165	8	18	25	0	16175	539	15263	144	N.A.	N.A.	15523	232
P.H.O.L. - Ottawa	938	75	52	3	130	56	929	56	904	2	0	0	0	0	904	11	893	23	748	55	736	0
CHEO - Ottawa	5485	1	0	496	497	268	5485	540	656	8	0	4	10	5	656	14	656	11	659	138	647	18
P.H.O.L. - Kingston	614	36	17	2	55	14	599	39	595	1	0	0	0	0	595	15	587	25	426	41	414	0
UHN / Mount Sinai Hospital	7958	9	0	595	604	143	7958	279	436	7	2	10	2	0	0	0	434	10	0	0	N.A.	N.A.
P.H.O.L. - Toronto	10092	1178	114	31	1323	201	9666	311	9587	34	0	3	0	0	9587	99	9416	188	7043	396	6852	0
Sick Kids Hospital - Toronto	1854	98	11	94	203	133	1504	197	1504	25	6	6	27	0	1504	39	1504	33	1504	305	1504	65
Sunnybrook & Women's College HSC	1177	0	0	112	112	18	1177	40	1020	8	0	5	0	0	977	5	1096	12	1096	33	120	0
P.H.O.L. - Sault Ste. Marie	294	12	0	0	12	6	294	11	294	1	0	0	0	0	294	3	292	8	243	12	241	0
P.H.O.L. - Timmins	220	53	1	2	56	6	190	7	192	0	0	0	0	0	192	0	191	10	164	2	161	0
St. Joseph's - London	2583	0	0	205	205	66	2583	276	899	18	4	2	13	0	899	18	899	20	490	86	469	8
P.H.O.L. - London	2756	217	81	3	301	89	2731	185	2716	8	0	0	0	0	2716	33	2687	77	2260	207	2219	0
P.H.O.L. - Orillia	1025	68	27	2	97	28	1025	68	1022	4	0	0	0	0	1022	6	1021	22	831	61	828	0
P.H.O.L. - Thunder Bay	376	48	5	5	58	36	374	11	374	0	0	1	0	0	374	8	365	14	326	28	316	0
P.H.O.L. - Sudbury	440	22	12	4	38	13	435	29	435	0	0	1	0	0	435	9	426	9	363	17	353	0
P.H.O.L. - Hamilton	2877	240	33	6	279	83	2783	128	2764	10	1	0	0	0	2764	53	2746	62	2169	206	2147	0
P.H.O.L. - Peterborough	730	49	3	0	52	4	727	23	726	3	0	0	0	0	725	6	722	24	471	42	465	0
St. Joseph's - Hamilton	8638	0	0	1351	1351	463	8638	1028	8638	106	5	7	0	0	8638	179	8638	143	8638	631	0	0
Province of Ontario	48057	2106	356	2911	5373	1627	47098	3228	32762	235	18	39	52	5	32282	498	32573	691	27431	2260	17472	91
Manitoba	9581	119	90	735	944	783	9259	677	2938	40	6	4	7	0	2938	49	1958	35	2938	432	1958	30
Regina	6410	3	1	785	789	435	6410	304	3284	124	9	4	17	0	3284	58	3207	67	3284	650	3284	71
Saskatoon	4455	0	0	318	318	235	4455	182	4519	98	12	6	7	0	4519	66	4522	27	4519	530	4519	45
Saskatchewan	10865	3	1	1103	1107	670	10865	486	7803	222	21	10	24	0	7803	124	7729	94	7803	1180	7803	116
Alberta	26677	880	1131	1011	3022	2869	20817	0	20817	428	44	35	165	0	20817	345	20817	563	20817	3082	20817	588
Prairies	47123	1002	1222	2849	5073	4322	40941	1163	31558	690	71	49	196	0	31558	518	30504	692	31558	4694	30578	734
Province of British Columbia	22799	200	235	609	1864	1415	22488	1489	6578	175	49	28	43	36	6575	79	6549	344	6093	1230	5127	171
Yukon	1236	4	8	24	36	8	1236	3	N.A.	N.A.	N.A.	N.A.	N.A.	N.A.	N.A.	N.A.	N.A.	N.A.	N.A.	N.A.	N.A.	N.A.
Northwest Territories	598	49	8	1	58	46	589	0	589	12	0	3	9	0	589	16	589	45	589	111	589	45
Nunavut	305	2	2	33	37	12	302	10	302	15	3	1	4	0	302	13	302	2	302	78	67	5
Territories	2139	55	18	58	131	66	2127	13	891	27	3	4	13	0	891	29	891	47	891	189	656	50
CANADA	205781	3405	1878	15843	21946	16750	193798	12590	92357	1455	154	143	346	41	91918	1797	90215	1955	70410	8993	71509	1315

Specimens from YT, NT and NU are sent to reference laboratories in other provinces and reported results reflect specimens identified as originating from YT, NT or NU.

Results from British Columbia comprise of specimens from the following sites: BC Children's and Women's Hospital, Children's and Women's Hospital Laboratory, Fraser Health Medical Microbiology Laboratory, Island Health, Providence Health Care, Powell River Hospital, St. Paul's Hospital, Vancouver General Hospital, Victoria General Hospital, Victoria Coastal Health, BCCDC Public Health Laboratory, Interior Health Authority sites and Northern Health Authority sites.

Delays in the reporting of data may cause data to change retrospectively.

Due to reporting delays, the sum of weekly report totals do not add up to cumulative totals.

For BC, only data from subtyped influenza A specimens are included in the weekly number of influenza detections. The sum of A(H1N1)pdm09, A(H3), and A(UnS) positive results may not equal the sum of total Flu A positive results.

Figure 1: Number positive laboratory tests for other respiratory viruses by report week, Canada, 2019-2020

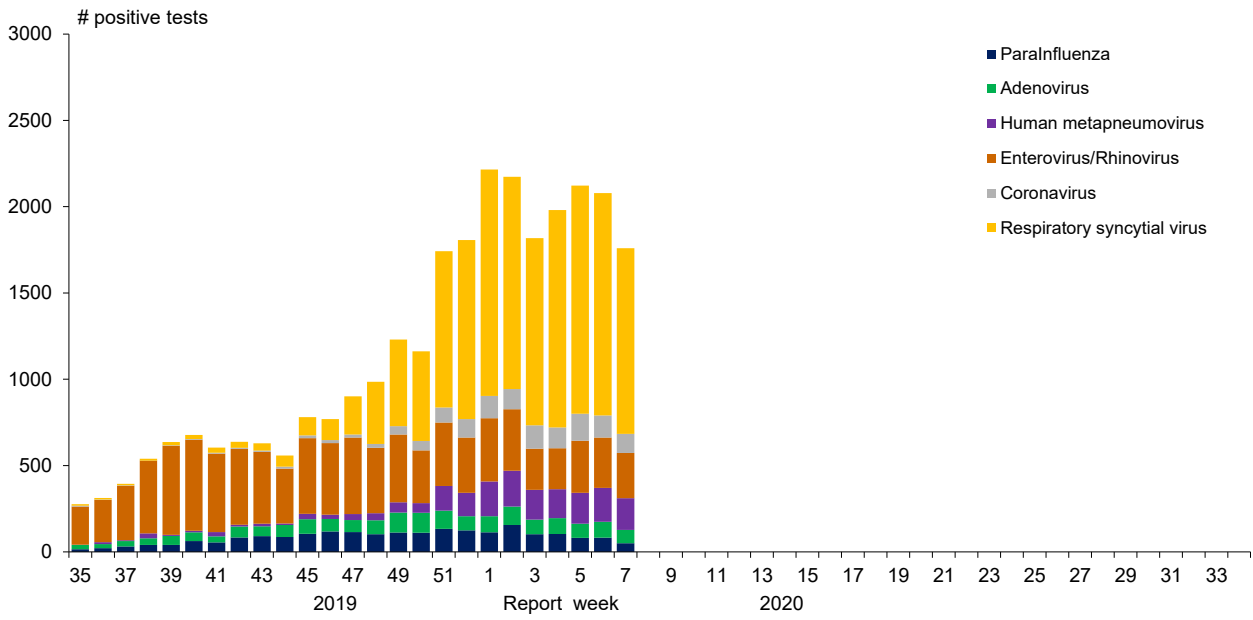


Figure 2: Positive Influenza Tests (%) in Canada by Region by Week of Report

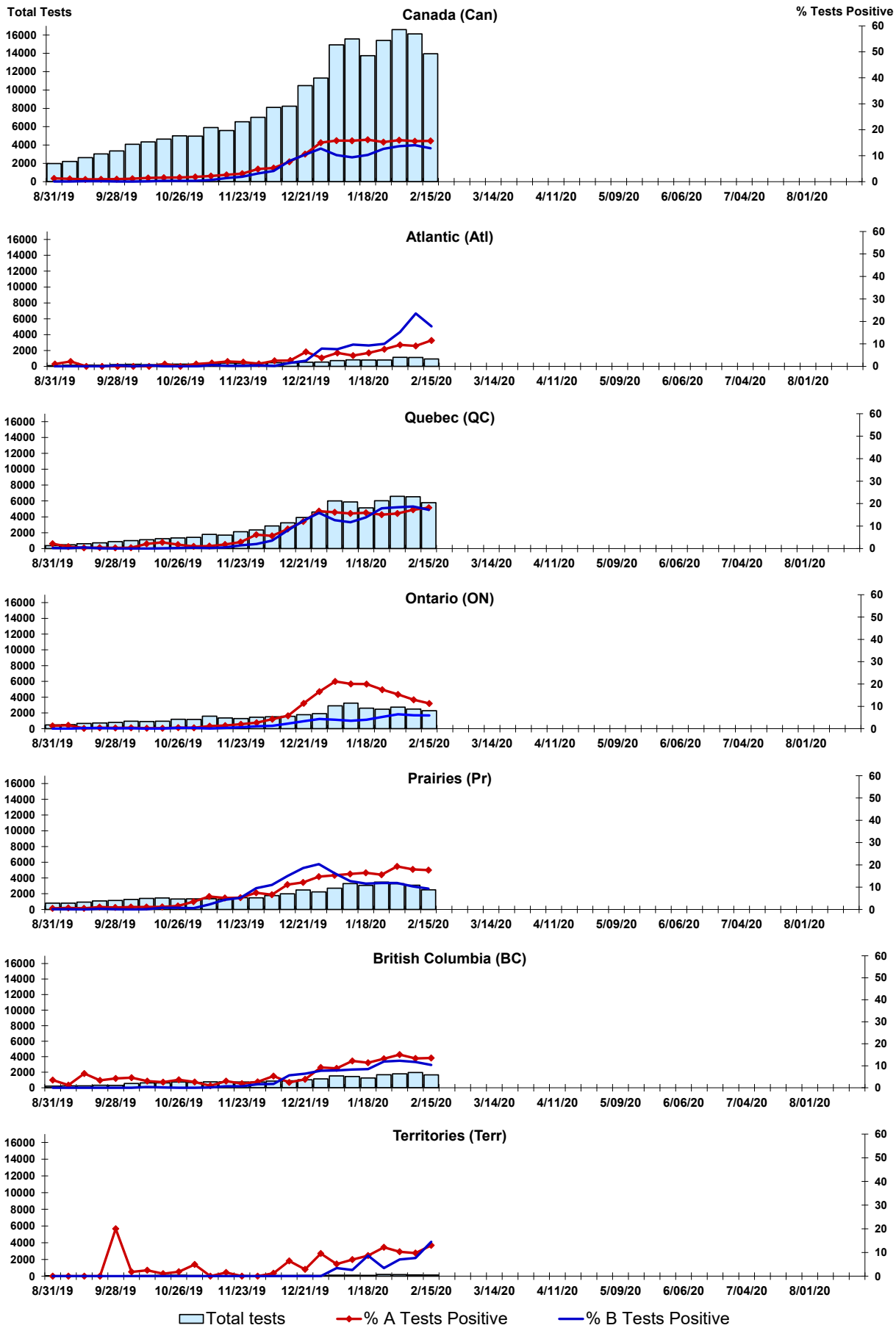


Figure 3: Positive Respiratory syncytial virus (RSV) Tests (%) in Canada by Region by Week of Report

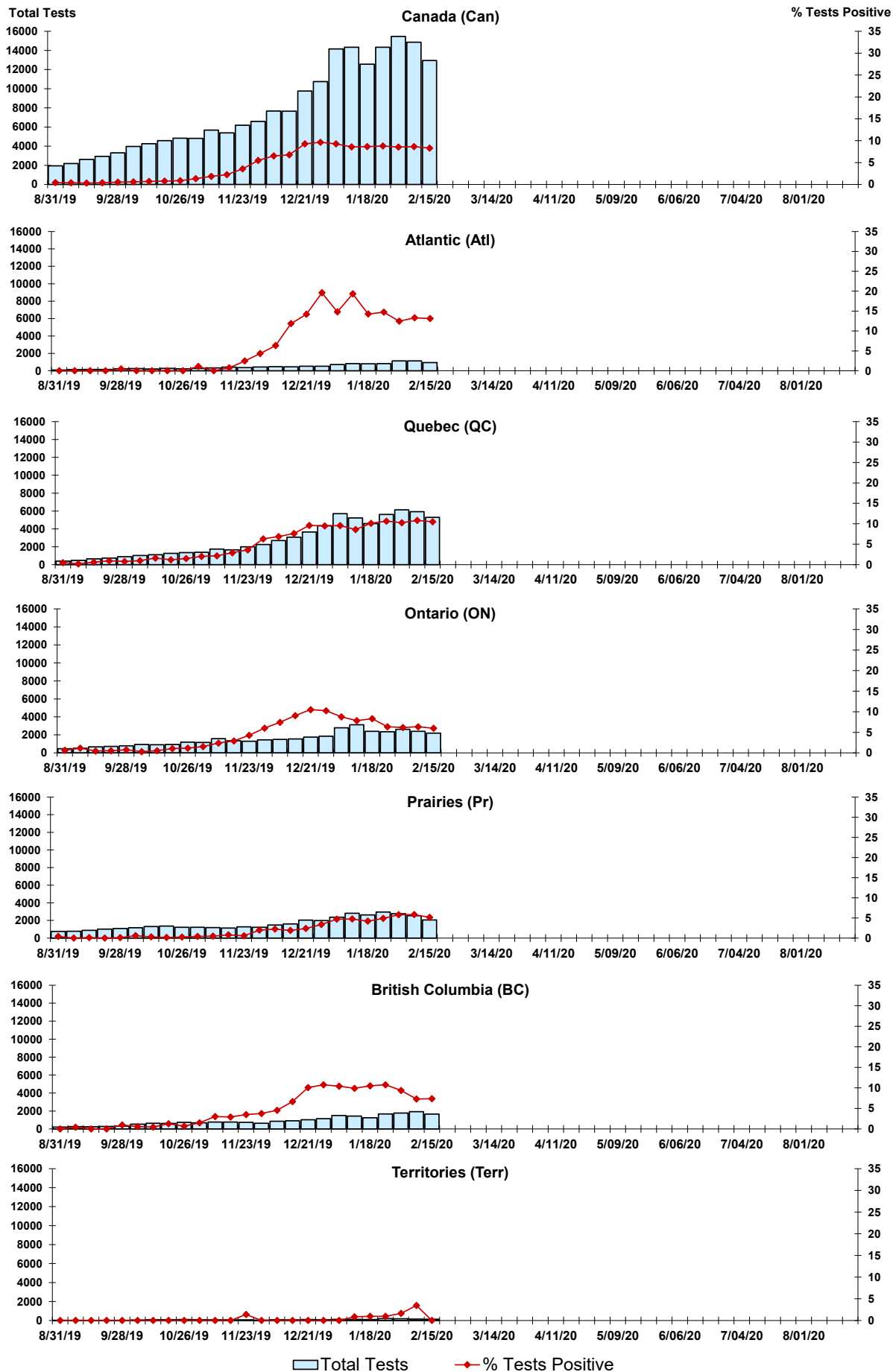


Figure 4: Positive Parainfluenza (PIV) Tests (%) in Canada by Region by Week of Report

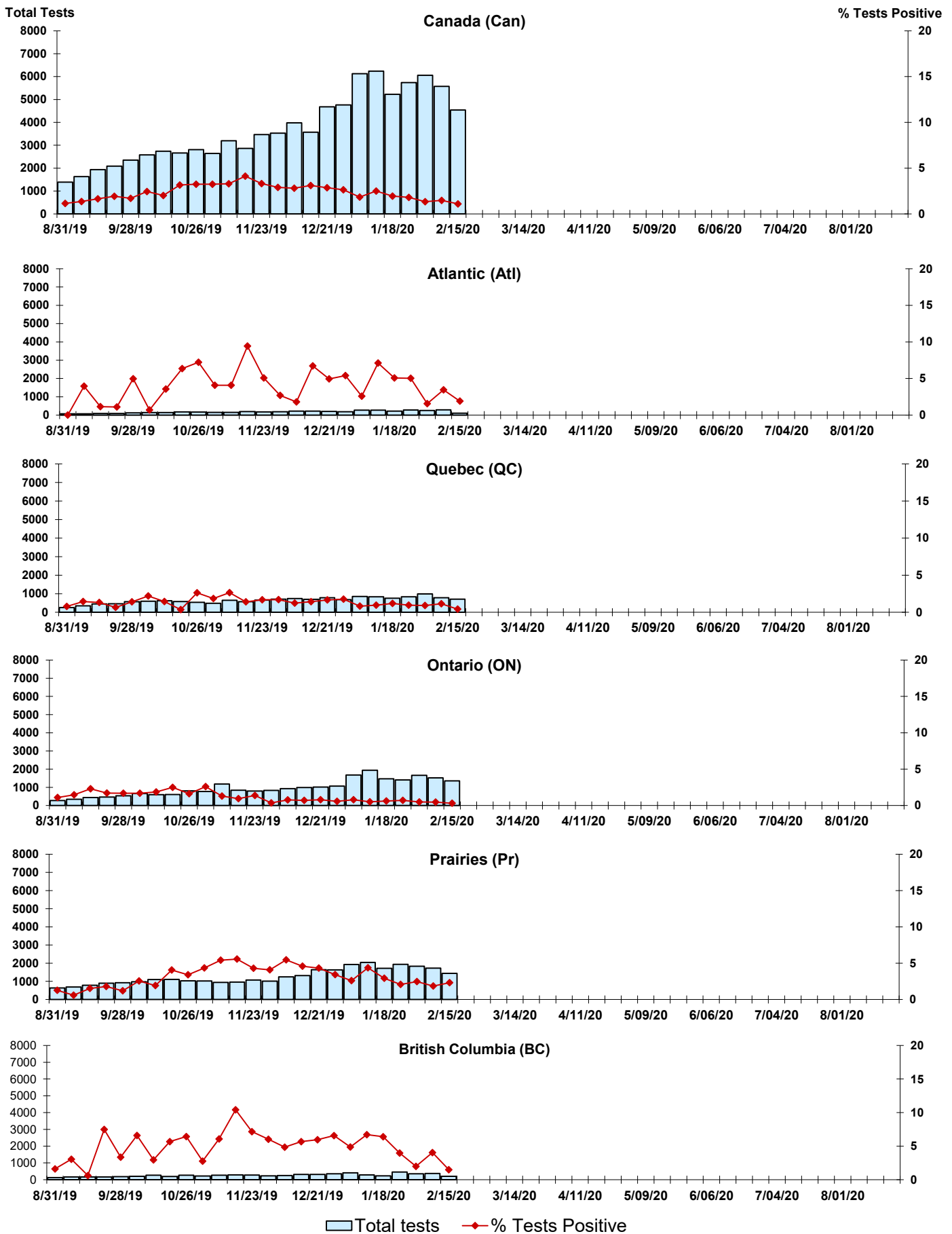


Figure 5: Positive Adenovirus (adeno) Tests (%) in Canada by Region by Week of Report

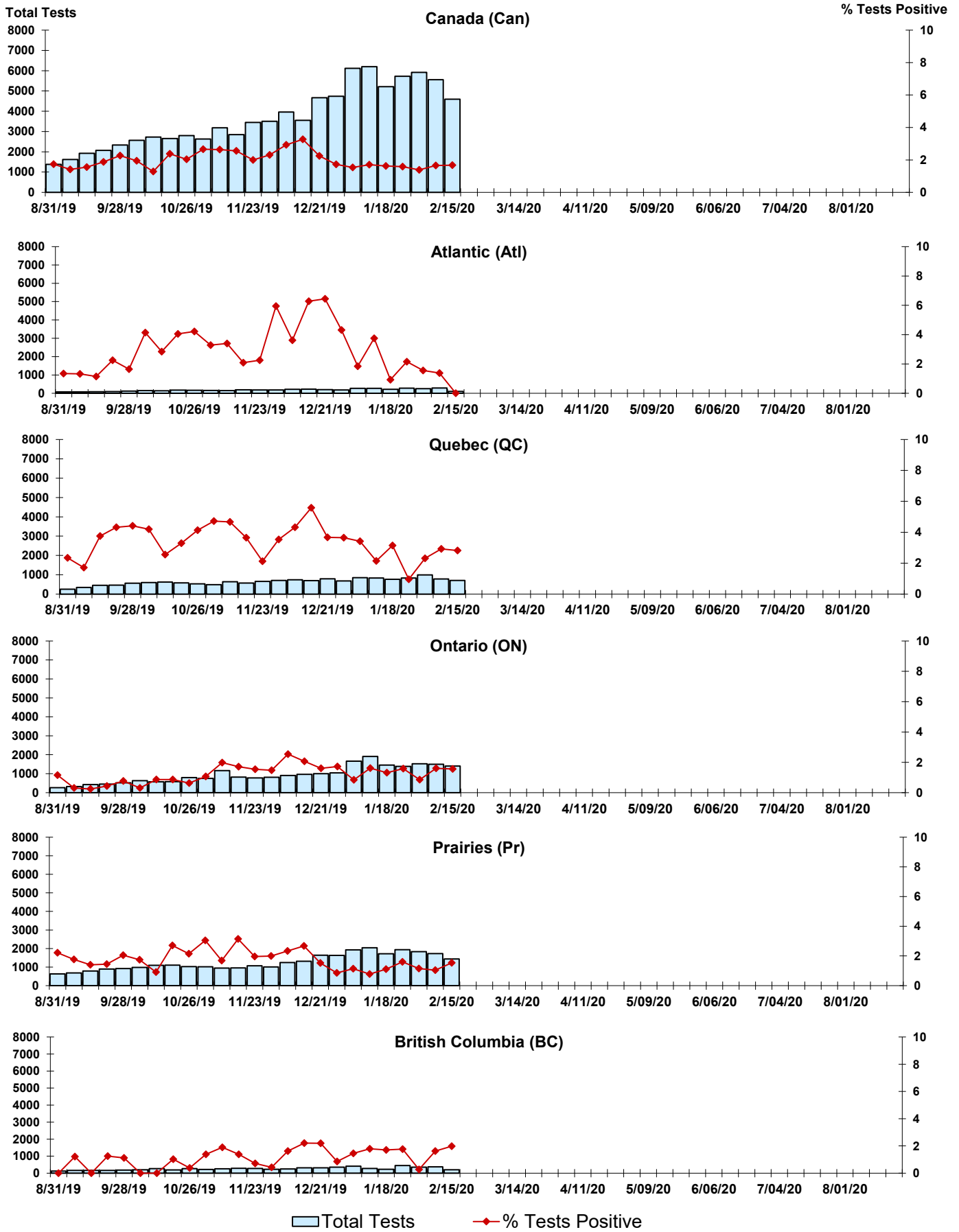


Figure 6: Positive human metapneumovirus (hMPV) Tests (%) in Canada by Region by Week of Report

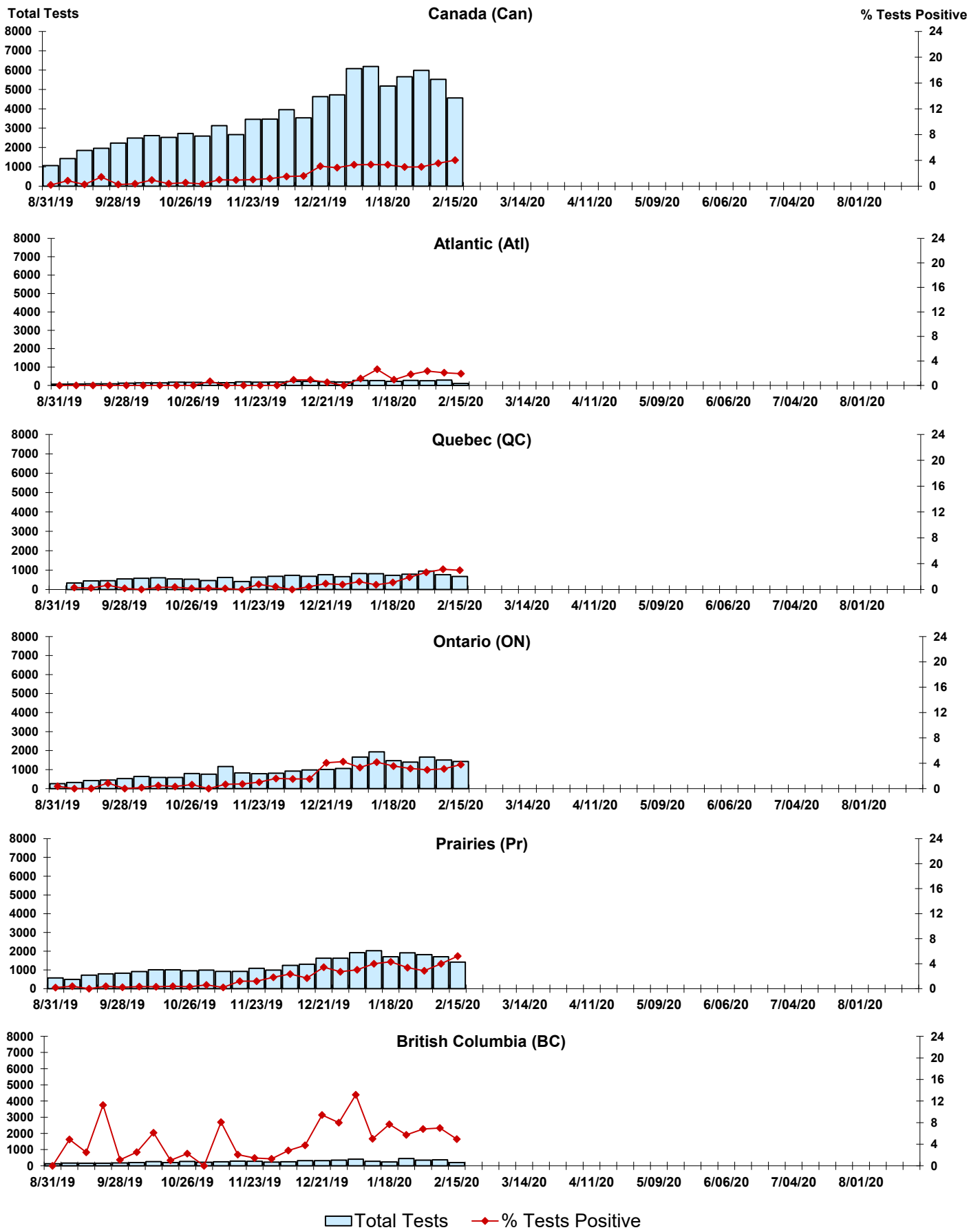


Figure 7: Positive Enterovirus/Rhinovirus (entero/rhino) Tests (%) in Canada by Region by Week of Report

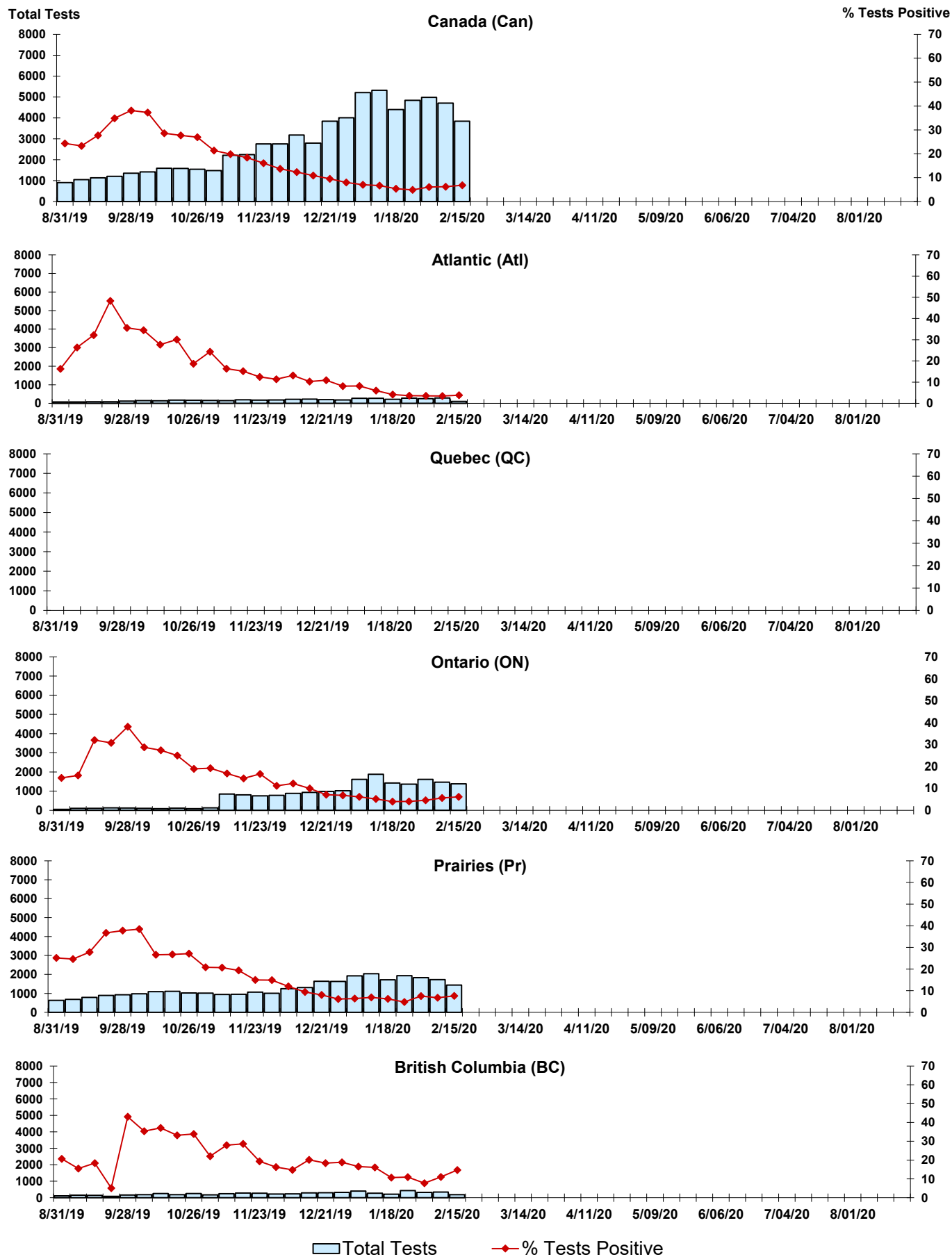
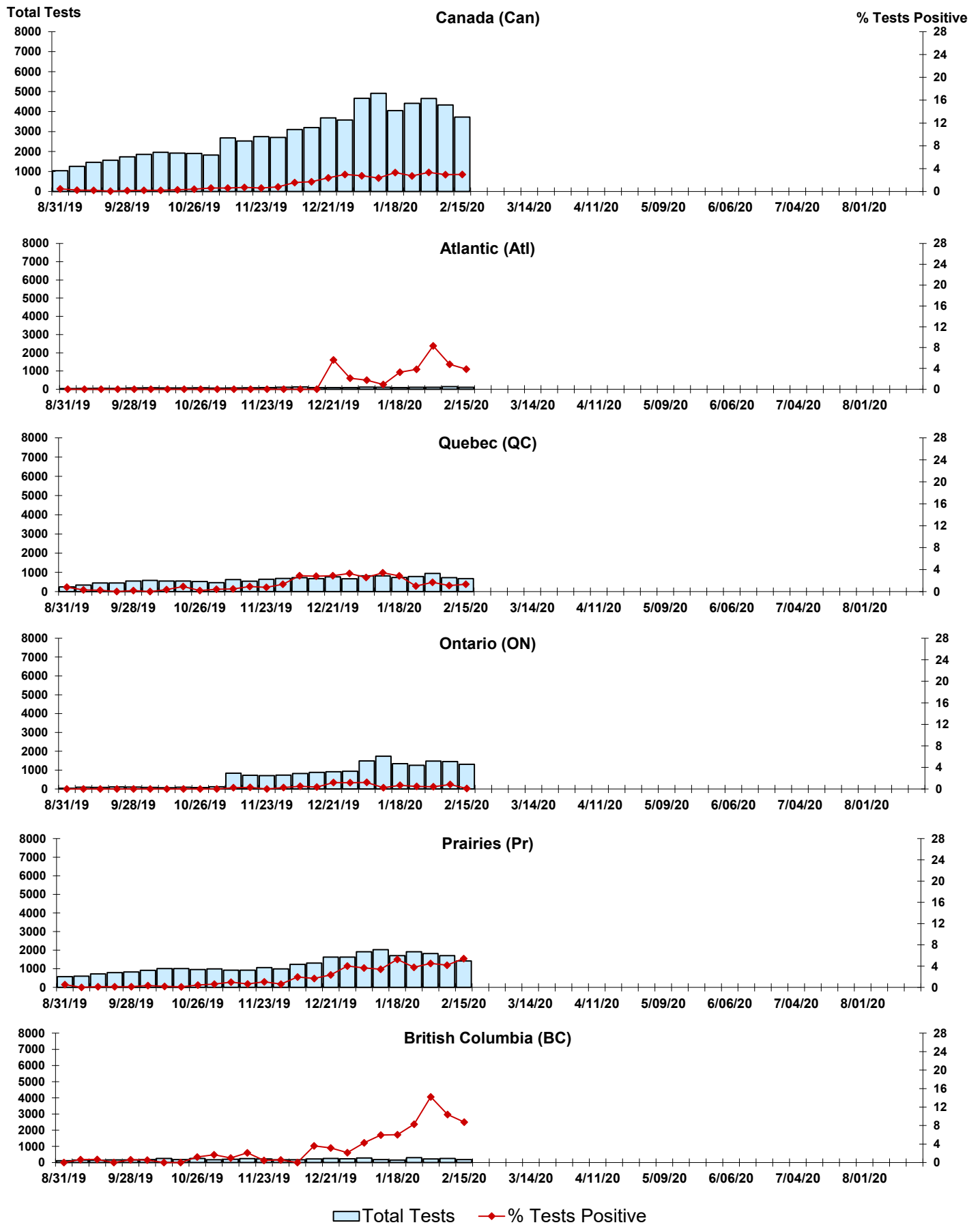


Figure 8: Positive Coronavirus (coron) Tests (%) in Canada by Region by Week of Report



Abbreviations:

A(H1N1)pdm09: Influenza A(H1N1)pdm09

A(H3): Influenza A(H3N2)

A (UnS): Influenza A (Unsubtyped)

Adeno: Adenovirus

CHEO: Children's Hospital of Eastern Ontario

Coron: Coronavirus

Entero: Enterovirus

hMPV: human metapneumovirus

HSC: Health Sciences Centre

N.A.: Not Applicable

P.H.O.L.: Public Health Ontario Laboratory

PIV: Parainfluenza

Rhino: Rhinovirus

RSV: Respiratory syncytial virus

UHN: University Health Network

Notes:

Specimens from Yukon (YT), Northwest Territories (NT) and Nunavut (NU) are sent to reference laboratories in other provinces. Results reported for the Territories reflect the number of specimens that are identified as originating from YT, NT or NU.

Delays in the reporting of data may cause data to change retrospectively.

Due to reporting delays, the sum of weekly report totals do not add up to cumulative totals.