

Respiratory Virus Report, Week 10 - ending March 13, 2021

The Respiratory Virus Detection Surveillance System collects data from select laboratories across Canada on the number of tests performed and the number of tests positive for influenza and other respiratory viruses. Data are reported on a weekly basis year-round to the Centre for Immunization and Respiratory Infectious Diseases (CIRID), Public Health Agency of Canada. These data are also summarized in the weekly FluWatch report.

In this Respiratory Virus Report, the number of detections of coronavirus reflects only seasonal human coronaviruses, not the novel pandemic coronavirus (SARS-CoV2) that causes COVID-19. For information on COVID-19, see the [Coronavirus disease \(COVID-19\): Outbreak](#)

Table 1: Respiratory Virus Detections/Isolations for the week ending March 13, 2021 (Reporting Week 202110)

Reporting Laboratory	Flu Tested	A(H1N1)pdm09 Positive	A(H3) Positive	A(UnS) Positive	Total Flu A Positive	Total Flu B Positive	RSV Tested	RSV Positive	PIV Tested	PIV 1 Positive	PIV 2 Positive	PIV 3 Positive	PIV 4 Positive	Other PIV Positive	Adeno Tested	Adeno Positive	hMPV Tested	hMPV Positive	Entero/Rhino Tested	Entero/Rhino Positive	Coron Tested	Coron Positive
Newfoundland	504	0	0	0	0	0	504	0	504	0	0	0	0	0	506	2	38	0	504	2	N.A.	N.A.
Prince Edward Island	172	0	0	0	0	0	172	0	172	0	0	0	0	0	172	0	172	0	172	17	172	0
Nova Scotia	351	0	0	0	0	0	351	0	36	0	0	0	0	0	36	0	36	0	36	1	36	0
New Brunswick	517	0	0	0	0	0	232	0	17	0	0	0	0	0	17	0	17	0	17	0	17	0
Atlantic	1544	0	0	0	0	0	1259	0	729	0	0	0	0	0	731	2	263	0	729	20	225	0
Région Nord-Est	117	0	0	0	0	0	22	0	0	0	0	0	0	0	0	0	0	0	N.A.	N.A.	0	0
Québec-Chaudière-Appalaches	5	0	0	0	0	0	16	0	13	0	0	0	0	0	13	0	13	0	N.A.	N.A.	13	1
Centre-du-Québec	20	0	0	1	1	0	20	0	8	0	0	0	0	0	8	1	8	0	N.A.	N.A.	8	0
Montréal-Laval	239	0	0	0	0	0	239	3	113	0	0	0	0	0	113	1	113	1	N.A.	N.A.	113	5
Ouest du Québec	114	0	0	0	0	0	115	0	0	0	0	0	0	0	0	0	0	0	N.A.	N.A.	0	0
Montérégie	115	0	0	0	0	0	115	0	0	0	0	0	0	0	0	0	0	0	N.A.	N.A.	0	0
Province of Québec	610	0	0	1	1	0	527	3	134	0	0	0	0	0	134	2	134	1	N.A.	N.A.	134	6
P.H.O.L. - Ottawa	17	0	0	0	0	0	17	0	10	0	0	0	0	0	10	0	10	0	10	2	10	0
CHEO - Ottawa	114	0	0	0	0	0	114	0	28	0	0	0	0	0	28	1	28	0	28	4	28	0
P.H.O.L. - Kingston	12	0	0	0	0	0	12	0	9	0	0	0	0	0	9	0	9	0	9	0	9	0
UHN / Mount Sinai Hospital	503	0	0	1	1	0	503	0	484	0	0	0	0	0	484	1	484	0	484	1	484	0
P.H.O.L. - Toronto	140	0	0	0	0	0	140	0	95	0	0	0	0	0	95	0	95	0	95	0	95	0
Sick Kids Hospital - Toronto	N.A.	N.A.	N.A.	N.A.	N.A.	N.A.	N.A.	N.A.	N.A.	N.A.	N.A.	N.A.	N.A.	N.A.	N.A.	N.A.	N.A.	N.A.	N.A.	N.A.	N.A.	N.A.
Sunnybrook & Women's College HSC	N.A.	N.A.	N.A.	N.A.	N.A.	N.A.	N.A.	N.A.	N.A.	N.A.	N.A.	N.A.	N.A.	N.A.	N.A.	N.A.	N.A.	N.A.	N.A.	N.A.	N.A.	N.A.
P.H.O.L. - Sault Ste. Marie	6	0	0	0	0	0	6	0	0	0	0	0	0	0	0	0	0	0	0	0	0	0
P.H.O.L. - Timmins	8	0	0	0	0	0	8	0	1	0	0	0	0	0	1	0	1	0	1	0	1	0
St. Joseph's - London	N.A.	N.A.	N.A.	N.A.	N.A.	N.A.	N.A.	N.A.	N.A.	N.A.	N.A.	N.A.	N.A.	N.A.	N.A.	N.A.	N.A.	N.A.	N.A.	N.A.	N.A.	N.A.
P.H.O.L. - London	34	0	0	0	0	0	34	0	9	0	0	0	0	0	9	0	9	0	9	0	9	0
P.H.O.L. - Orillia	8	0	0	0	0	0	8	0	0	0	0	0	0	0	0	0	0	0	0	0	0	0
P.H.O.L. - Thunder Bay	4	0	0	0	0	0	4	0	4	0	0	0	0	0	4	0	4	0	4	3	4	0
P.H.O.L. - Sudbury	8	0	0	0	0	0	8	0	2	0	0	0	0	0	2	0	2	0	2	0	2	0
P.H.O.L. - Hamilton	18	0	0	0	0	0	18	0	15	0	0	0	0	0	15	0	15	0	15	0	15	0
P.H.O.L. - Peterborough	11	0	0	0	0	0	11	0	11	0	0	0	0	0	11	0	11	0	11	0	11	0
St. Joseph's - Hamilton	258	0	0	0	0	0	258	0	258	0	0	0	0	0	258	0	258	0	258	8	0	0
Province of Ontario	1141	0	0	1	1	0	1141	0	926	0	0	0	0	0	926	2	926	0	926	18	668	0
Province of Manitoba	1529	0	0	0	0	0	1529	0	71	0	0	0	0	0	71	0	120	0	71	4	120	0
Province of Saskatchewan	9968	0	0	0	0	0	1444	0	22	0	0	0	0	0	22	0	22	0	22	2	22	0
Province of Alberta	2752	0	0	0	0	0	735	0	735	0	0	0	0	0	735	3	735	0	735	46	735	1
Prairies	14249	0	0	0	0	0	3708	0	828	0	0	0	0	0	828	3	877	0	828	52	877	1
British Columbia	3013	0	0	1	1	0	2901	0	480	0	0	0	0	5	475	9	480	2	475	24	455	0
Yukon	40	0	0	0	0	0	40	0	N.A.	N.A.	N.A.	N.A.	N.A.	N.A.	N.A.	N.A.	N.A.	N.A.	N.A.	N.A.	N.A.	N.A.
Northwest Territories	7	0	0	0	0	0	7	0	7	0	0	0	0	0	7	0	7	0	7	0	7	1
Nunavut	3	0	0	0	0	0	3	0	3	0	0	0	0	0	3	0	3	0	3	0	0	0
Territories	50	0	0	0	0	0	50	0	10	0	0	0	0	0	10	0	10	0	10	0	7	1
CANADA	20607	0	0	3	3	0	9586	3	3107	0	0	0	0	5	3104	18	2690	3	2968	114	2366	8

The data in the RVDSS report represent surveillance data available at the time of writing. Missing data are denoted by N.A.

Specimens from Yukon (YT), Northwest Territories (NT) and Nunavut (NU) are sent to reference laboratories in other provinces and reported results reflect specimens identified as originating from YT, NT or NU.

Results from British Columbia comprise of specimens from the following sites: BC Children's and Women's Hospital, Fraser Health Medical Microbiology Laboratory, Island Health, Providence Health Care, Powell River Hospital , St. Paul's Hospital , Vancouver General Hospital, Victoria General Hospital, BCCDC Public Health Laboratory, Interior Health Authority sites and Northern Health Authority sites.

Delays in the reporting of data may cause data to change retrospectively.

Influenza co-detections may cause the sum of A(H1N1)pdm09, A(H3), and A(UnS) positive results to exceed the sum of Total Flu A Positive results.

Table 2: Respiratory Virus Detections/Isolations for the period August 23, 2020 - March 13, 2021 (Reporting Weeks 202035-202110)

Reporting Laboratory	Flu Tested	A(H1N1)pdm09 Positive	A(H3) Positive	A(UnS) Positive	Total Flu A Positive	Total Flu B Positive	RSV Tested	RSV Positive	PIV Tested	PIV 1 Positive	PIV 2 Positive	PIV 3 Positive	PIV 4 Positive	Other PIV Positive	Adeno Tested	Adeno Positive	hMPV Tested	hMPV Positive	Entero/Rhino Tested	Entero/Rhino Positive	Coron Tested	Coron Positive
Newfoundland	8862	0	0	0	0	0	8862	10	8862	1	0	1	0	0	8875	42	8275	2	8862	1940	N.A.	N.A.
Prince Edward Island	2436	0	0	0	0	0	2436	3	2432	2	0	0	0	0	2432	29	2432	0	2432	269	2432	0
Nova Scotia	2826	0	0	0	0	0	2829	0	422	0	0	0	0	0	422	7	422	0	422	60	422	0
New Brunswick	49326	0	0	0	1	1	17014	0	567	0	0	0	0	0	558	8	558	0	558	48	513	0
Atlantic	63450	0	0	0	0	1	31141	13	12283	3	0	1	0	0	12287	86	11687	2	12274	2317	3367	0
Région Nord-Est	2817	0	0	0	0	0	840	1	0	0	0	0	0	0	0	0	0	0	N.A.	N.A.	0	0
Québec-Chaudière-Appalaches	650	0	0	1	1	0	719	0	435	0	0	0	0	0	437	24	432	0	N.A.	N.A.	415	7
Centre-du-Québec	698	0	0	1	1	0	707	1	229	0	0	0	0	0	227	17	229	0	N.A.	N.A.	226	0
Montréal-Laval	5495	0	0	0	0	0	4539	7	3057	0	0	1	0	0	3111	110	3042	1	N.A.	N.A.	3042	21
Ouest du Québec	1163	0	0	0	0	0	1107	0	0	0	0	0	0	0	0	0	0	0	N.A.	N.A.	0	0
Montérégie	248	0	0	0	0	0	248	0	0	0	0	0	0	0	0	0	0	0	N.A.	N.A.	0	0
Province of Québec	11071	0	0	2	2	0	8160	9	3721	0	0	1	0	0	3775	151	3703	1	N.A.	N.A.	3683	28
P.H.O.L. - Ottawa	435	0	0	0	0	0	435	1	369	0	0	0	0	0	369	0	368	0	369	22	368	1
CHEO - Ottawa	4022	0	0	1	1	1	3619	4	611	0	0	0	0	0	611	12	611	1	611	69	611	0
P.H.O.L. - Kingston	724	0	0	1	1	0	724	0	483	0	0	0	0	0	483	3	477	0	483	102	477	0
UHN / Mount Sinai Hospital	9058	2	0	2	4	1	8989	6	8580	3	2	3	8	0	6954	9	8540	8	8337	87	6376	5
P.H.O.L. - Toronto	4866	0	0	0	0	0	4863	2	4294	0	0	0	0	2	4295	11	4293	0	4294	144	4293	4
Sick Kids Hospital - Toronto	854	0	0	0	0	0	0	0	854	0	0	0	0	0	854	12	854	0	854	88	854	0
Sunnybrook & Women's College HSC	0	0	0	0	0	0	0	0	0	0	0	0	0	0	0	0	0	0	0	0	0	0
P.H.O.L. - Sault Ste. Marie	124	0	0	2	2	0	122	0	87	0	0	0	0	0	87	0	87	0	87	6	87	0
P.H.O.L. - Timmins	593	0	0	0	0	0	593	0	150	0	0	0	0	0	150	0	149	0	150	30	149	0
St. Joseph's - London	218	0	0	0	0	0	218	0	55	0	0	0	0	0	55	0	55	0	91	8	36	0
P.H.O.L. - London	1688	1	0	5	6	2	1678	0	1208	0	0	0	0	2	1208	2	1203	0	1208	124	1203	3
P.H.O.L. - Orillia	344	0	0	1	1	0	342	0	189	0	0	0	0	0	189	1	189	0	189	12	189	0
P.H.O.L. - Thunder Bay	369	0	0	0	0	0	369	0	357	0	0	0	0	0	358	2	357	0	357	135	357	0
P.H.O.L. - Sudbury	417	0	0	0	0	0	415	0	320	0	0	0	0	0	320	2	320	0	320	28	320	0
P.H.O.L. - Hamilton	1358	0	0	0	0	0	1307	1	1107	0	0	0	0	0	1107	2	1107	0	1107	95	1107	0
P.H.O.L. - Peterborough	408	0	0	1	1	0	362	0	275	0	0	0	0	0	275	0	275	0	275	20	275	0
St. Joseph's - Hamilton	7629	0	0	0	0	0	7629	1	7629	0	0	0	0	0	7629	18	7629	0	7629	403	0	0
Province of Ontario	33107	3	0	13	16	4	31665	15	26568	3	2	3	8	4	24944	74	26514	9	26361	1373	16702	13
Manitoba	37082	0	0	0	0	1	37072	68	2591	0	1	1	0	0	2591	17	2636	1	2591	131	2636	3
Province of Saskatchewan	59310	0	0	0	0	0	9470	3	1503	0	0	1	1	0	1503	10	1503	0	1503	153	1503	2
Province of Alberta	102313	4	0	6	10	0	71307	0	71307	2	18	2	5	0	71307	126	71307	11	71307	5948	71307	21
Prairies	198705	4	0	6	10	1	117849	71	75401	2	19	4	6	0	75401	153	75446	12	75401	6232	75446	26
British Columbia	63674	3	8	1	10	8	63404	5	13576	1	4	0	7	5	14120	75	13970	56	13797	1203	9834	18
Yukon	4393	0	0	8	8	7	4331	4	N.A.	N.A.	N.A.	N.A.	N.A.	N.A.	N.A.	N.A.	N.A.	N.A.	N.A.	N.A.	N.A.	N.A.
Northwest Territories	1090	0	0	0	0	0	1061	0	1061	0	0	0	1	0	1061	9	1061	1	1061	314	1061	1
Nunavut	1098	0	0	0	0	0	1086	0	1086	3	1	0	0	0	1086	25	1086	5	1086	280	183	0
Territories	6581	0	0	8	8	7	6478	4	2147	3	1	0	1	0	2147	34	2147	6	2147	594	1244	1
CANADA	376588	10	8	30	46	21	258697	117	133696	12	26	9	22	9	132674	573	133467	86	129980	11719	110276	86

The data in the RVDSS report represent surveillance data available at the time of writing. Missing data are denoted by N.A.

Specimens from YT, NT and NU are sent to reference laboratories in other provinces and reported results reflect specimens identified as originating from YT, NT or NU.

Results from British Columbia comprise of specimens from the following sites: BC Children's and Women's Hospital, Children's and Women's Hospital Laboratory, Fraser Health Medical Microbiology Laboratory, Island Health, Providence Health Care, Powell River Hospital, St. Paul's Hospital, Vancouver General Hospital, Victoria General Hospital, BCCDC Public Health Laboratory, Interior Health Authority sites and Northern Health Authority sites.

Delays in the reporting of data may cause data to change retrospectively.

Due to reporting delays, the sum of weekly report totals do not add up to cumulative totals.

Influenza co-detections may cause the sum of A(H1N1)pdm09, A(H3), and A(UnS) positive results to exceed the sum of Total Flu A Positive results.

Figure 1: Number positive laboratory tests for other respiratory viruses by report week, Canada, 2020-21

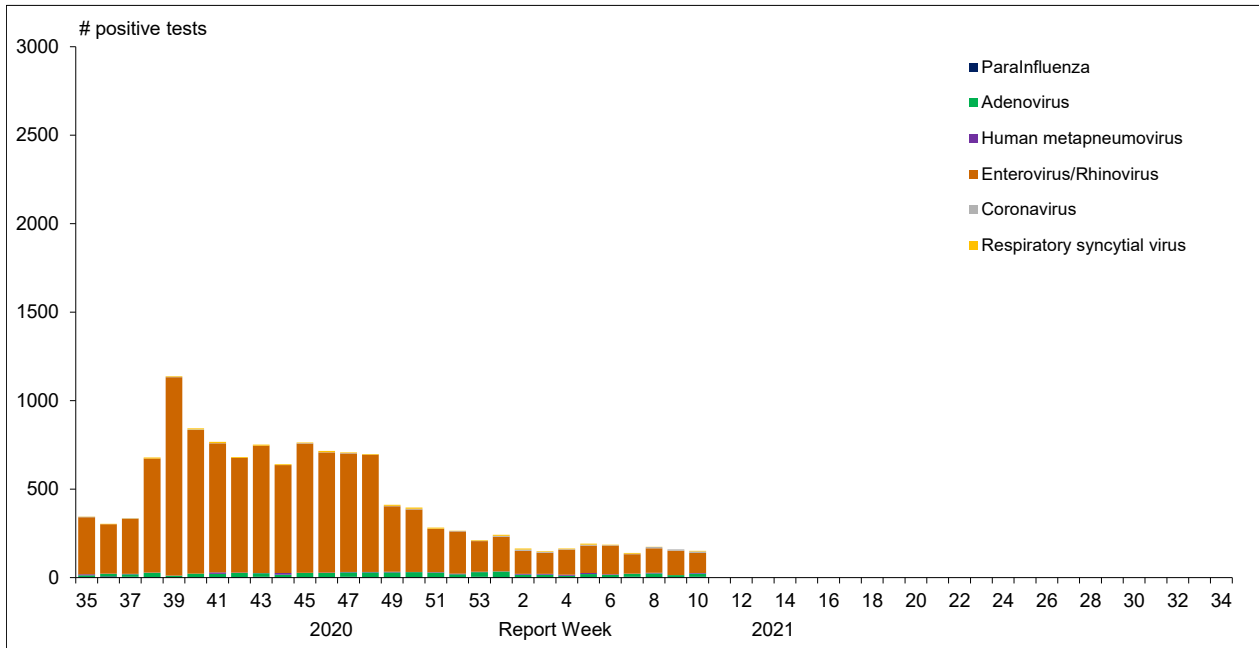


Figure 2 : Positive Influenza Tests (%) in Canada by Region by Week of Report

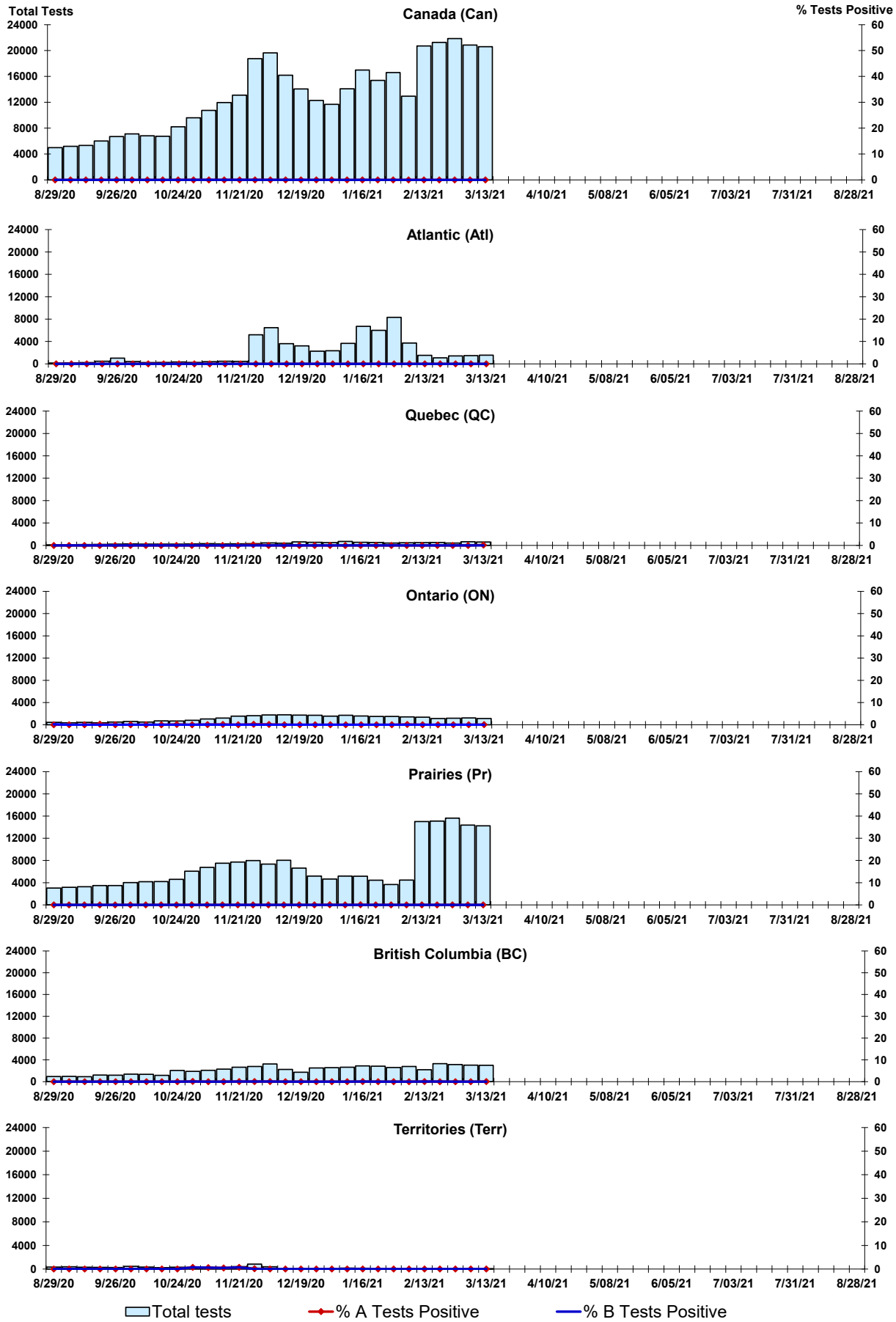


Figure 3: Positive Respiratory syncytial virus (RSV) Tests (%) in Canada by Region by Week of Report

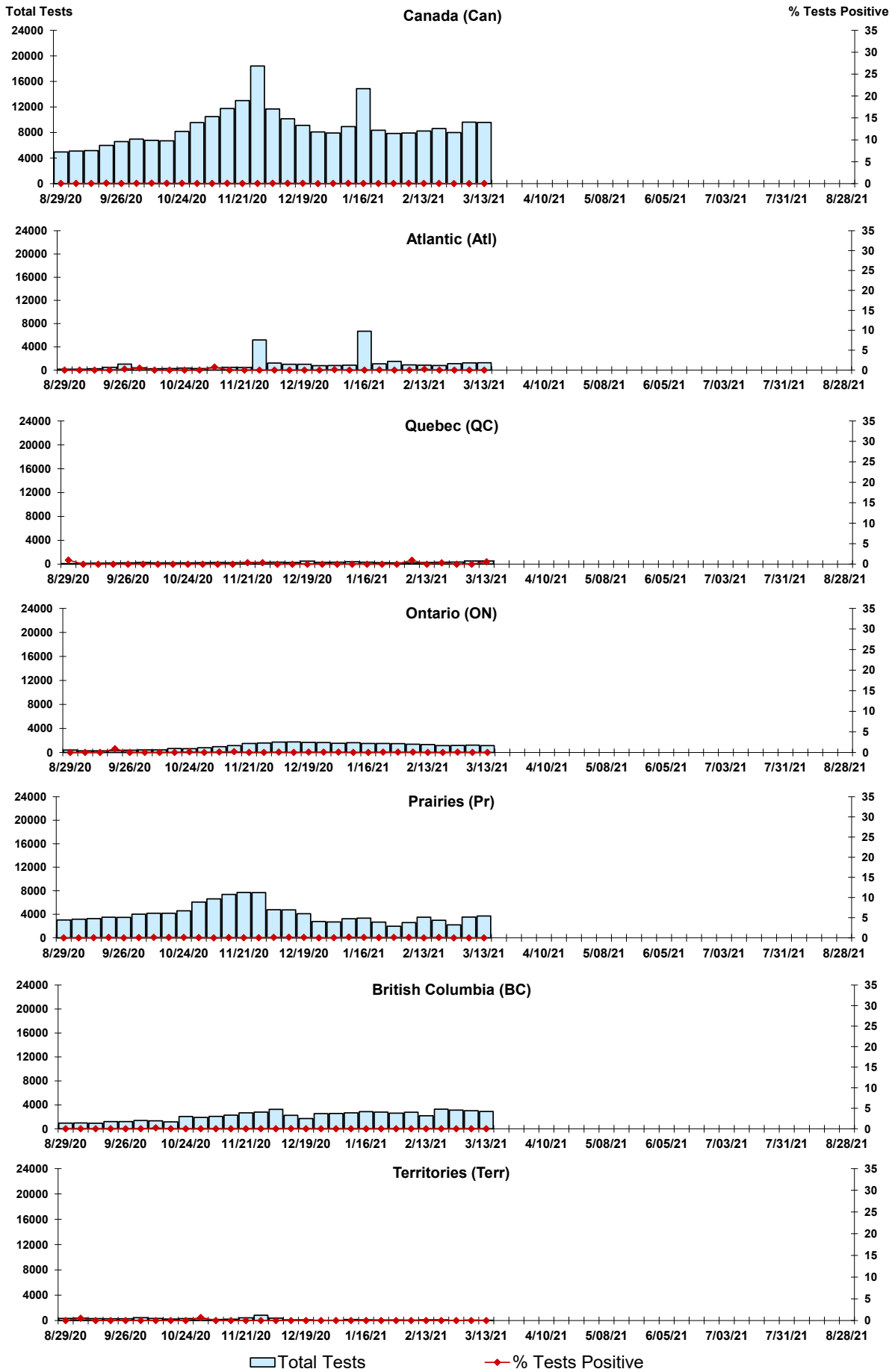
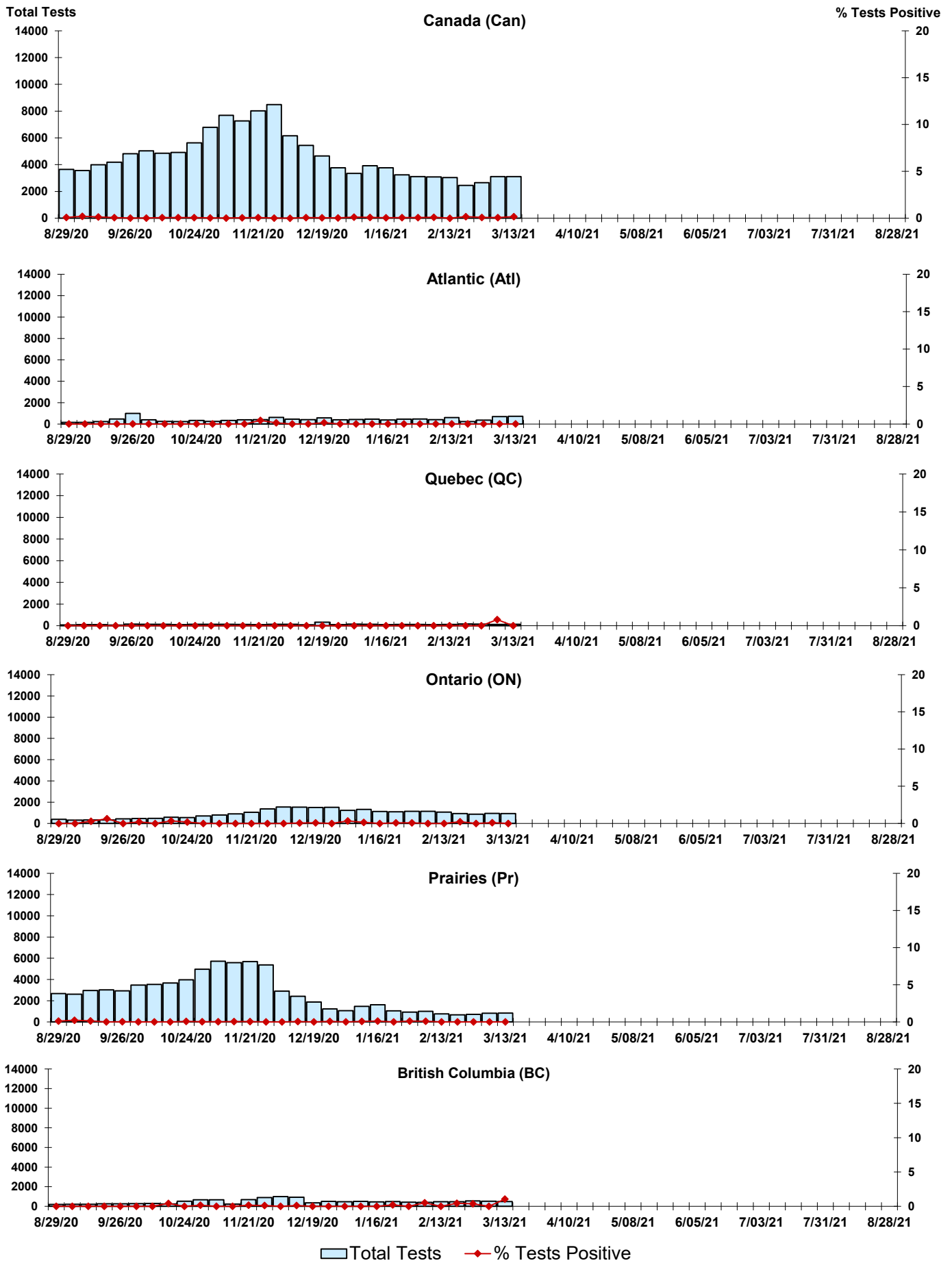


Figure 4: Positive Parainfluenza (PIV) Tests (%) in Canada by Region by Week of Report



Legend: Total Tests (light blue bar), % Tests Positive (red diamond)

Figure 5: Positive Adenovirus (adeno) Tests (%) in Canada by Region by Week of Report

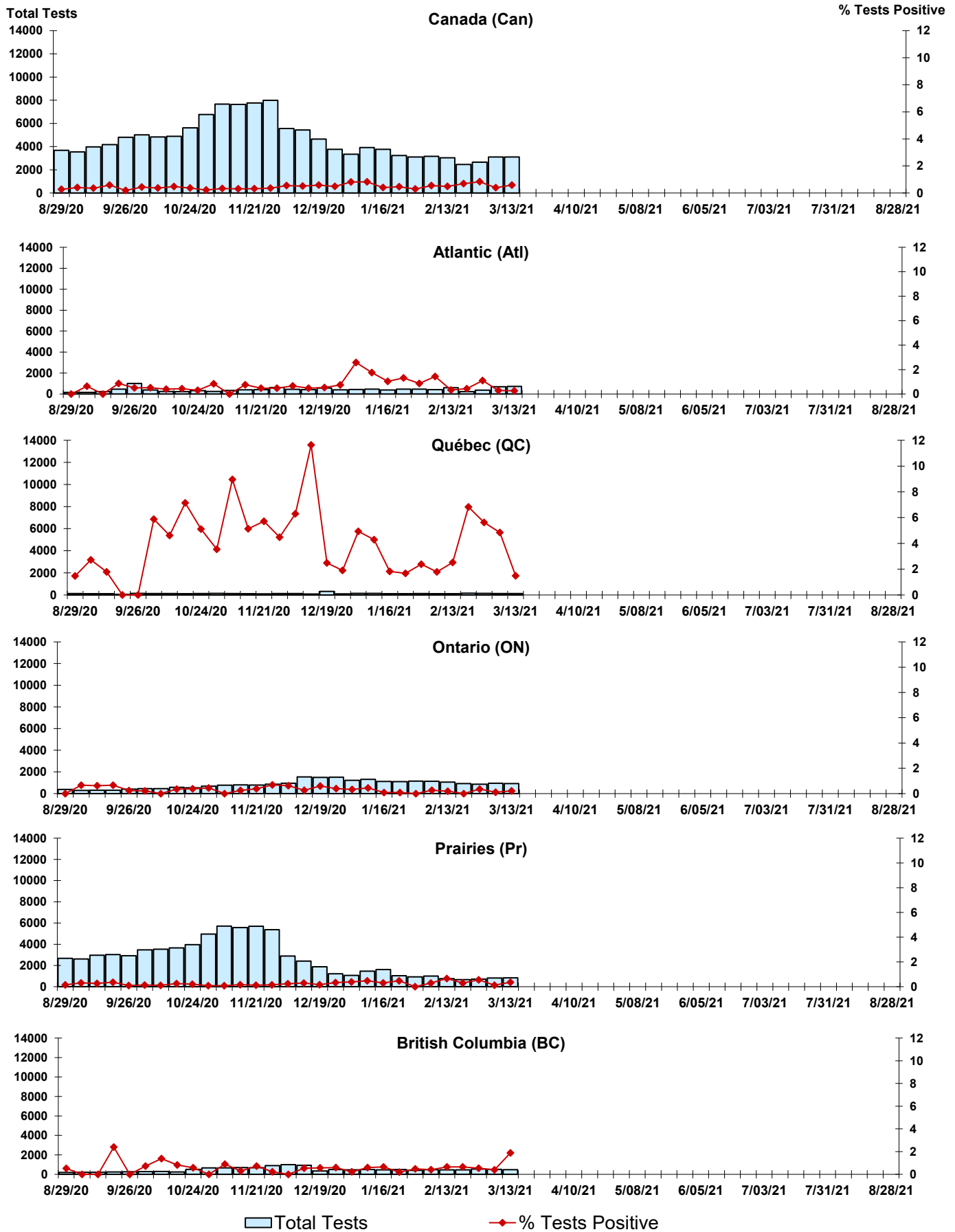


Figure 6: Positive human metapneumovirus (hMPV) Tests (%) in Canada by Region by Week of Report

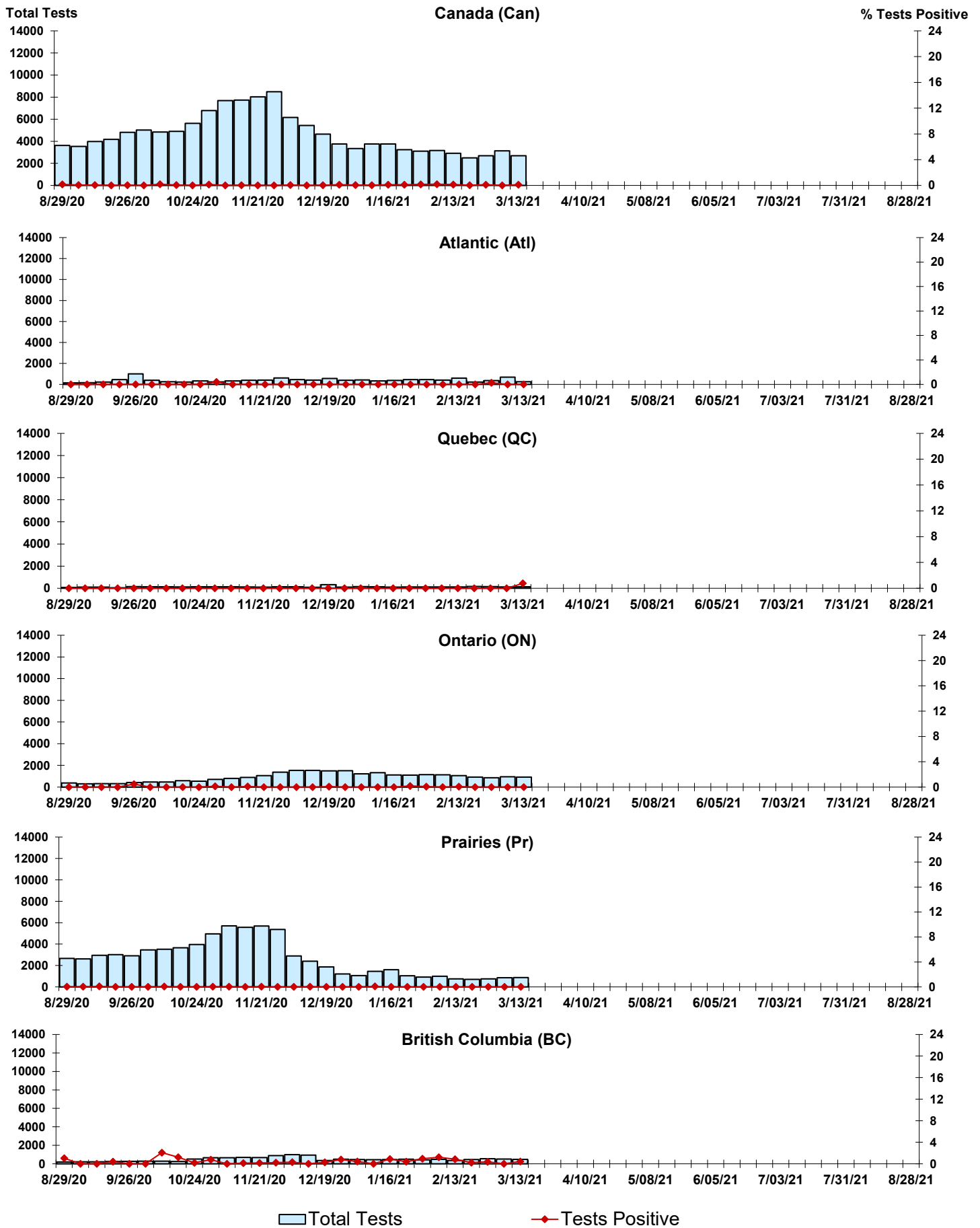


Figure 7: Positive Enterovirus/Rhinovirus (entero/rhino) Tests (%) in Canada by Region by Week of Report

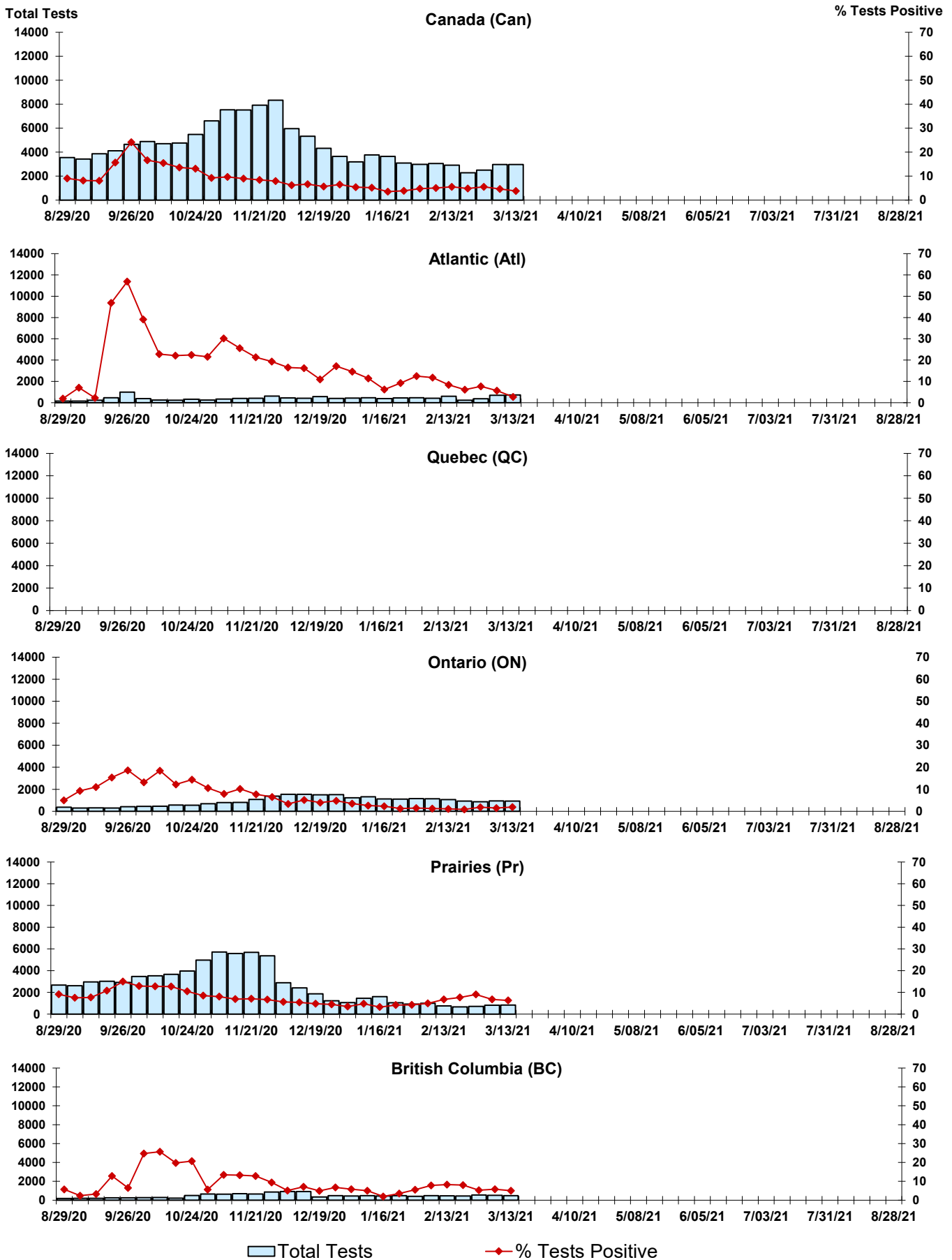
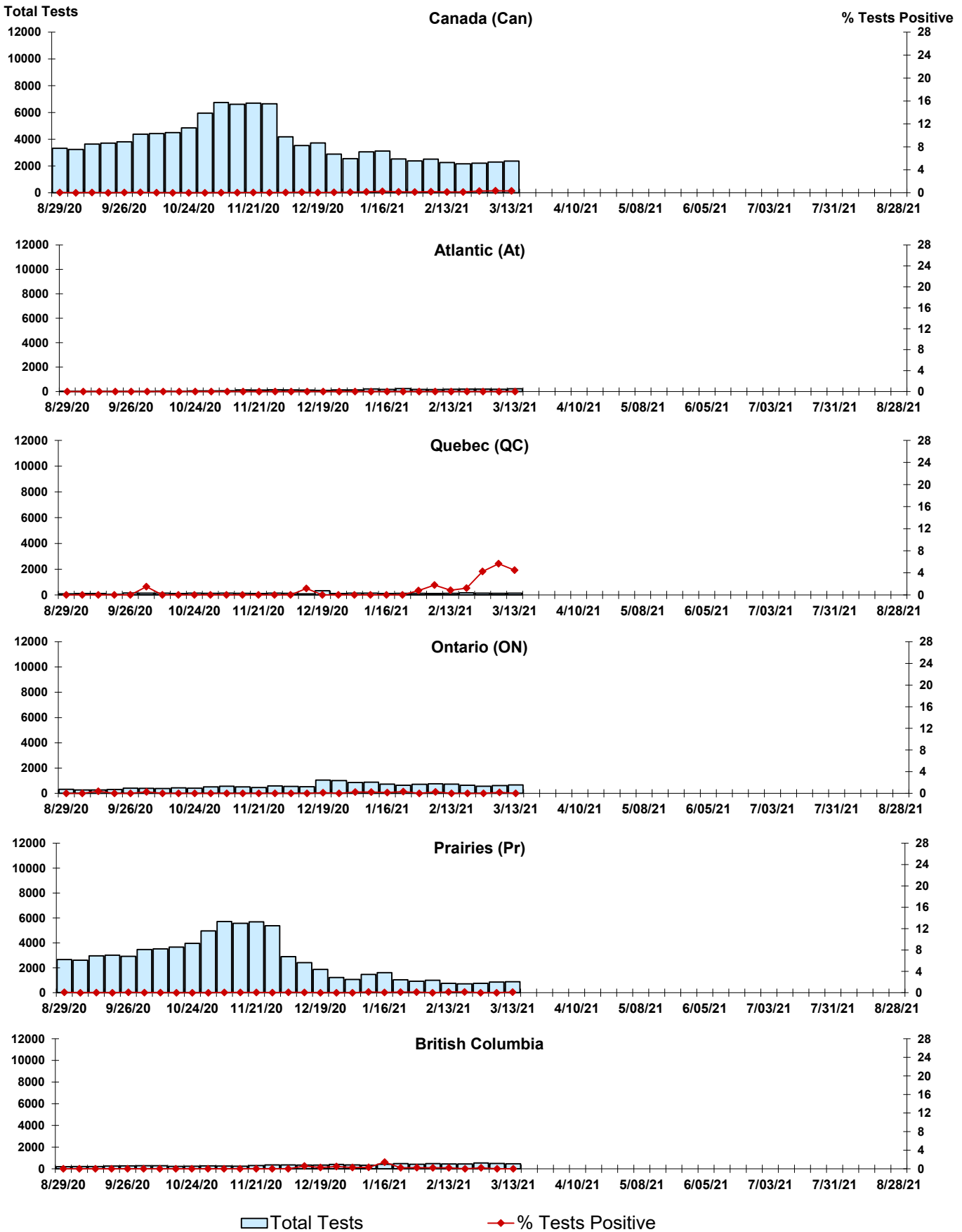


Figure 8: Positive Coronavirus (coron) Tests (%) in Canada by Region by Week of Report



Abbreviations:

A(H1N1)pdm09: Influenza A(H1N1)pdm09

A(H3): Influenza A(H3N2)

A (UnS): Influenza A (Unsubtyped)

Adeno: Adenovirus

CHEO: Children's Hospital of Eastern Ontario

Coron: Coronavirus

Enterovirus: Enterovirus

hMPV: human metapneumovirus

HSC: Health Sciences Centre

N.A.: Not Applicable

P.H.L.: Public Health Laboratory

P.H.O.L.: Public Health Ontario Laboratory

PIV: Parainfluenza

Rhino: Rhinovirus

RSV: Respiratory syncytial virus

UHN: University Health Network

Notes:

The data in the RVDSS report represent surveillance data available at the time of writing. Missing data are denoted by N.A.

Specimens from Yukon (YT), Northwest Territories (NT) and Nunavut (NU) are sent to reference laboratories in other provinces. Results reported for the Territories reflect the number of specimens that are identified as originating from YT, NT or NU.

Delays in the reporting of data may cause data to change retrospectively.

Due to reporting delays, the sum of weekly report totals do not add up to cumulative totals.