

# Respiratory Virus Report, Week 11 - ending March 20, 2021

The Respiratory Virus Detection Surveillance System collects data from select laboratories across Canada on the number of tests performed and the number of tests positive for influenza and other respiratory viruses. Data are reported on a weekly basis year-round to the Centre for Immunization and Respiratory Infectious Diseases (CIRID), Public Health Agency of Canada. These data are also summarized in the weekly FluWatch report.

In this Respiratory Virus Report, the number of detections of coronavirus reflects only seasonal human coronaviruses, not the novel pandemic coronavirus (SARS-CoV2) that causes COVID-19. For information on COVID-19, see the [Coronavirus disease \(COVID-19\): Outbreak](#)

**Table 1: Respiratory Virus Detections/Isolations for the week ending March 20, 2021 (Reporting Week 202111)**

Reporting Laboratory	Flu Tested	A(H1N1)pdm09 Positive	A(H3) Positive	A(UnS) Positive	Total Flu A Positive	Total Flu B Positive	RSV Tested	RSV Positive	PIV Tested	PIV 1 Positive	PIV 2 Positive	PIV 3 Positive	PIV 4 Positive	Other PIV Positive	Adeno Tested	Adeno Positive	hMPV Tested	hMPV Positive	Entero/Rhino Tested	Entero/Rhino Positive	Coron Tested	Coron Positive
Newfoundland	380	0	0	0	0	0	380	0	380	0	0	0	0	0	384	1	380	0	380	8	N.A.	N.A.
Prince Edward Island	138	0	0	0	0	0	138	0	138	0	0	0	0	0	138	0	138	0	138	6	138	0
Nova Scotia	400	0	0	0	0	0	400	0	39	0	0	0	0	0	39	0	39	0	39	2	39	0
New Brunswick	581	0	0	0	0	0	334	0	128	0	0	0	0	0	128	0	128	0	128	0	128	0
<b>Atlantic</b>	<b>1499</b>	<b>0</b>	<b>0</b>	<b>0</b>	<b>0</b>	<b>0</b>	<b>1252</b>	<b>0</b>	<b>685</b>	<b>0</b>	<b>0</b>	<b>0</b>	<b>0</b>	<b>0</b>	<b>689</b>	<b>1</b>	<b>685</b>	<b>0</b>	<b>685</b>	<b>16</b>	<b>305</b>	<b>0</b>
Région Nord-Est	272	0	0	0	0	0	20	0	0	0	0	0	0	0	0	0	0	0	N.A.	N.A.	0	0
Québec-Chaudière-Appalaches	12	0	0	0	0	0	14	0	10	0	0	0	0	0	10	0	10	0	N.A.	N.A.	10	0
Centre-du-Québec	30	0	0	0	0	0	30	0	11	0	0	0	0	0	11	0	11	0	N.A.	N.A.	11	1
Montréal-Laval	250	0	0	0	0	0	249	6	109	0	0	0	0	0	109	5	108	0	N.A.	N.A.	108	4
Ouest du Québec	112	0	0	0	0	0	112	0	0	0	0	0	0	0	0	0	0	0	N.A.	N.A.	0	0
Montérégie	83	0	0	0	0	0	83	0	0	0	0	0	0	0	0	0	0	0	N.A.	N.A.	0	0
<b>Province of Québec</b>	<b>759</b>	<b>0</b>	<b>0</b>	<b>0</b>	<b>0</b>	<b>0</b>	<b>508</b>	<b>6</b>	<b>130</b>	<b>0</b>	<b>0</b>	<b>0</b>	<b>0</b>	<b>0</b>	<b>130</b>	<b>5</b>	<b>129</b>	<b>0</b>	<b>N.A.</b>	<b>N.A.</b>	<b>129</b>	<b>5</b>
P.H.O.L. - Ottawa	19	0	0	0	0	0	19	0	15	0	0	0	0	0	15	0	15	0	15	0	15	0
CHEO - Ottawa	104	0	0	0	0	0	104	1	14	0	0	0	0	0	14	0	14	0	14	2	14	0
P.H.O.L. - Kingston	13	0	0	0	0	0	13	0	10	0	0	0	0	0	10	0	10	0	10	0	10	0
UHN / Mount Sinai Hospital	487	0	0	0	0	0	487	0	444	0	0	0	0	0	444	0	444	0	444	4	444	1
P.H.O.L. - Toronto	131	0	0	0	0	0	131	0	85	0	0	0	0	0	85	1	85	0	85	0	85	0
Sick Kids Hospital - Toronto	N.A.	N.A.	N.A.	N.A.	N.A.	N.A.	N.A.	N.A.	N.A.	N.A.	N.A.	N.A.	N.A.	N.A.	N.A.	N.A.	N.A.	N.A.	N.A.	N.A.	N.A.	N.A.
Sunnybrook & Women's College HSC	N.A.	N.A.	N.A.	N.A.	N.A.	N.A.	N.A.	N.A.	N.A.	N.A.	N.A.	N.A.	N.A.	N.A.	N.A.	N.A.	N.A.	N.A.	N.A.	N.A.	N.A.	N.A.
P.H.O.L. - Sault Ste. Marie	3	0	0	0	0	0	3	0	0	0	0	0	0	0	0	0	0	0	0	0	0	0
P.H.O.L. - Timmins	3	0	0	0	0	0	3	0	2	0	0	0	0	0	2	0	2	0	2	0	2	0
St. Joseph's - London	N.A.	N.A.	N.A.	N.A.	N.A.	N.A.	N.A.	N.A.	N.A.	N.A.	N.A.	N.A.	N.A.	N.A.	N.A.	N.A.	N.A.	N.A.	N.A.	N.A.	N.A.	N.A.
P.H.O.L. - London	26	0	0	0	0	0	26	0	14	0	0	0	0	0	14	0	14	0	14	1	14	0
P.H.O.L. - Orillia	5	0	0	0	0	0	5	0	0	0	0	0	0	0	0	0	0	0	0	0	0	0
P.H.O.L. - Thunder Bay	9	0	0	0	0	0	9	0	9	0	0	0	0	0	9	0	9	0	9	0	9	0
P.H.O.L. - Sudbury	7	0	0	0	0	0	7	0	0	0	0	0	0	0	0	0	0	0	0	0	0	0
P.H.O.L. - Hamilton	17	0	0	0	0	0	17	0	13	0	0	0	0	0	13	0	13	0	13	0	13	0
P.H.O.L. - Peterborough	5	0	0	0	0	0	5	0	5	0	0	0	0	0	5	0	5	0	5	0	5	0
St. Joseph's - Hamilton	N.A.	N.A.	N.A.	N.A.	N.A.	N.A.	N.A.	N.A.	N.A.	N.A.	N.A.	N.A.	N.A.	N.A.	N.A.	N.A.	N.A.	N.A.	N.A.	N.A.	N.A.	N.A.
<b>Province of Ontario</b>	<b>829</b>	<b>0</b>	<b>0</b>	<b>0</b>	<b>0</b>	<b>0</b>	<b>829</b>	<b>1</b>	<b>611</b>	<b>0</b>	<b>0</b>	<b>0</b>	<b>0</b>	<b>0</b>	<b>611</b>	<b>1</b>	<b>611</b>	<b>0</b>	<b>611</b>	<b>7</b>	<b>611</b>	<b>1</b>
Province of Manitoba	1418	0	0	0	0	0	1418	0	61	0	0	0	0	0	61	0	112	0	61	4	112	0
Province of Saskatchewan	11976	0	0	0	0	0	2161	0	32	0	0	0	0	0	32	0	32	4	32	3	32	5
Province of Alberta	2249	0	0	0	0	0	533	0	533	0	0	0	0	0	533	1	533	0	533	58	533	0
<b>Prairies</b>	<b>15643</b>	<b>0</b>	<b>0</b>	<b>0</b>	<b>0</b>	<b>0</b>	<b>4112</b>	<b>0</b>	<b>626</b>	<b>0</b>	<b>0</b>	<b>0</b>	<b>0</b>	<b>0</b>	<b>626</b>	<b>1</b>	<b>677</b>	<b>4</b>	<b>626</b>	<b>65</b>	<b>677</b>	<b>5</b>
<b>British Columbia</b>	<b>2879</b>	<b>0</b>	<b>0</b>	<b>0</b>	<b>0</b>	<b>0</b>	<b>2800</b>	<b>0</b>	<b>442</b>	<b>0</b>	<b>0</b>	<b>0</b>	<b>0</b>	<b>0</b>	<b>442</b>	<b>2</b>	<b>442</b>	<b>0</b>	<b>436</b>	<b>19</b>	<b>422</b>	<b>1</b>
Yukon	41	0	0	0	0	0	41	0	N.A.	N.A.	N.A.	N.A.	N.A.	N.A.	N.A.	N.A.	N.A.	N.A.	N.A.	N.A.	N.A.	N.A.
Northwest Territories	12	0	0	0	0	0	8	0	8	0	0	0	0	0	8	0	8	0	8	1	8	0
Nunavut	1	0	0	0	0	0	0	0	0	0	0	0	0	0	0	0	0	0	0	0	0	0
<b>Territories</b>	<b>54</b>	<b>0</b>	<b>0</b>	<b>0</b>	<b>0</b>	<b>0</b>	<b>49</b>	<b>0</b>	<b>8</b>	<b>0</b>	<b>0</b>	<b>0</b>	<b>0</b>	<b>0</b>	<b>8</b>	<b>0</b>	<b>8</b>	<b>0</b>	<b>8</b>	<b>1</b>	<b>8</b>	<b>0</b>
<b>CANADA</b>	<b>21663</b>	<b>0</b>	<b>0</b>	<b>0</b>	<b>0</b>	<b>0</b>	<b>9550</b>	<b>7</b>	<b>2502</b>	<b>0</b>	<b>0</b>	<b>0</b>	<b>0</b>	<b>0</b>	<b>2506</b>	<b>10</b>	<b>2552</b>	<b>4</b>	<b>2366</b>	<b>108</b>	<b>2152</b>	<b>12</b>

The data in the RVDSS report represent surveillance data available at the time of writing. Missing data are denoted by N.A.

Specimens from Yukon (YT), Northwest Territories (NT) and Nunavut (NU) are sent to reference laboratories in other provinces and reported results reflect specimens identified as originating from YT, NT or NU.

Results from British Columbia comprise of specimens from the following sites: BC Children's and Women's Hospital, Fraser Health Medical Microbiology Laboratory, Island Health, Providence Health Care, Powell River Hospital, St. Paul's Hospital, Vancouver General Hospital, Victoria General Hospital, BCCDC Public Health Laboratory, Interior Health Authority sites and Northern Health Authority sites.

Delays in the reporting of data may cause data to change retrospectively.

Influenza co-detections may cause the sum of A(H1N1)pdm09, A(H3), and A(UnS) positive results to exceed the sum of Total Flu A Positive results.

**Table 2: Respiratory Virus Detections/Isolations for the period August 23, 2020 - March 20, 2021 (Reporting Weeks 202035-202111)**

Reporting Laboratory	Flu Tested	A(H1N1)pdm09 Positive	A(H3) Positive	A(UnS) Positive	Total Flu A Positive	Total Flu B Positive	RSV Tested	RSV Positive	PIV Tested	PIV 1 Positive	PIV 2 Positive	PIV 3 Positive	PIV 4 Positive	Other PIV Positive	Adeno Tested	Adeno Positive	hMPV Tested	hMPV Positive	Entero/Rhino Tested	Entero/Rhino Positive	Coron Tested	Coron Positive
Newfoundland	9242	0	0	0	0	0	9242	10	9242	1	0	1	0	0	9259	43	8655	2	9242	1948	N.A.	N.A.
Prince Edward Island	2574	0	0	0	0	0	2574	3	2570	2	0	0	0	0	2570	29	2570	0	2570	275	2570	0
Nova Scotia	3226	0	0	0	0	0	3229	0	461	0	0	0	0	0	461	7	461	0	461	62	461	0
New Brunswick	49907	0	0	0	1	1	17348	0	695	0	0	0	0	0	686	8	686	0	686	48	641	0
<b>Atlantic</b>	<b>64949</b>	<b>0</b>	<b>0</b>	<b>0</b>	<b>0</b>	<b>1</b>	<b>32393</b>	<b>13</b>	<b>12968</b>	<b>3</b>	<b>0</b>	<b>1</b>	<b>0</b>	<b>0</b>	<b>12976</b>	<b>87</b>	<b>12372</b>	<b>2</b>	<b>12959</b>	<b>2333</b>	<b>3672</b>	<b>0</b>
Région Nord-Est	3089	0	0	0	0	0	860	1	0	0	0	0	0	0	0	0	0	0	N.A.	N.A.	0	0
Québec-Chaudière-Appalaches	662	0	0	1	1	0	733	0	445	0	0	0	0	0	447	24	442	0	N.A.	N.A.	425	7
Centre-du-Québec	728	0	0	0	0	0	737	1	240	0	0	0	0	0	238	17	240	0	N.A.	N.A.	237	1
Montréal-Laval	5745	0	0	0	0	0	4788	13	3166	0	0	1	0	0	3220	115	3150	1	N.A.	N.A.	3150	25
Ouest du Québec	1275	0	0	0	0	0	1219	0	0	0	0	0	0	0	0	0	0	0	N.A.	N.A.	0	0
Montérégie	331	0	0	0	0	0	331	0	0	0	0	0	0	0	0	0	0	0	N.A.	N.A.	0	0
<b>Province of Québec</b>	<b>11830</b>	<b>0</b>	<b>0</b>	<b>1</b>	<b>1</b>	<b>0</b>	<b>8668</b>	<b>15</b>	<b>3851</b>	<b>0</b>	<b>0</b>	<b>1</b>	<b>0</b>	<b>0</b>	<b>3905</b>	<b>156</b>	<b>3832</b>	<b>1</b>	<b>N.A.</b>	<b>N.A.</b>	<b>3812</b>	<b>33</b>
P.H.O.L. - Ottawa	454	0	0	0	0	0	454	1	384	0	0	0	0	0	384	0	383	0	384	22	383	1
CHEO - Ottawa	4126	0	0	1	1	1	3723	5	625	0	0	0	0	0	625	12	625	1	625	71	625	0
P.H.O.L. - Kingston	737	0	0	1	1	0	737	0	493	0	0	0	0	0	493	3	487	0	493	102	487	0
UHN / Mount Sinai Hospital	9545	2	0	2	4	1	9476	6	9024	3	2	3	8	0	7398	9	8984	8	8781	91	6820	6
P.H.O.L. - Toronto	4997	0	0	0	0	0	4994	2	4379	0	0	0	0	2	4380	12	4378	0	4379	144	4378	4
Sick Kids Hospital - Toronto	854	0	0	0	0	0	0	0	854	0	0	0	0	0	854	12	854	0	854	88	854	0
Sunnybrook & Women's College HSC	0	0	0	0	0	0	0	0	0	0	0	0	0	0	0	0	0	0	0	0	0	0
P.H.O.L. - Sault Ste. Marie	127	0	0	2	2	0	125	0	87	0	0	0	0	0	87	0	87	0	87	6	87	0
P.H.O.L. - Timmins	596	0	0	0	0	0	596	0	152	0	0	0	0	0	152	0	151	0	152	30	151	0
St. Joseph's - London	218	0	0	0	0	0	218	0	55	0	0	0	0	0	55	0	55	0	91	8	36	0
P.H.O.L. - London	1714	1	0	5	6	2	1704	0	1222	0	0	0	0	2	1222	2	1217	0	1222	125	1217	3
P.H.O.L. - Orillia	349	0	0	1	1	0	347	0	189	0	0	0	0	0	189	1	189	0	189	12	189	0
P.H.O.L. - Thunder Bay	378	0	0	0	0	0	378	0	366	0	0	0	0	0	367	2	366	0	366	135	366	0
P.H.O.L. - Sudbury	424	0	0	0	0	0	422	0	320	0	0	0	0	0	320	2	320	0	320	28	320	0
P.H.O.L. - Hamilton	1375	0	0	0	0	0	1324	1	1120	0	0	0	0	0	1120	2	1120	0	1120	95	1120	0
P.H.O.L. - Peterborough	413	0	0	1	1	0	367	0	280	0	0	0	0	0	280	0	280	0	280	20	280	0
St. Joseph's - Hamilton	7629	0	0	0	0	0	7629	1	7629	0	0	0	0	0	7629	18	7629	0	7629	403	0	0
<b>Province of Ontario</b>	<b>33936</b>	<b>3</b>	<b>0</b>	<b>13</b>	<b>16</b>	<b>4</b>	<b>32494</b>	<b>16</b>	<b>27179</b>	<b>3</b>	<b>2</b>	<b>3</b>	<b>8</b>	<b>4</b>	<b>25555</b>	<b>75</b>	<b>27125</b>	<b>9</b>	<b>26972</b>	<b>1380</b>	<b>17313</b>	<b>14</b>
Manitoba	38500	0	0	0	0	1	38490	68	2652	0	1	1	0	0	2652	17	2748	1	2652	135	2748	3
Province of Saskatchewan	71810	0	0	0	0	0	11653	3	1537	0	0	1	1	0	1537	10	1537	4	1537	158	1537	7
Province of Alberta	104631	4	0	6	10	0	71887	0	71887	2	18	3	5	0	71887	128	71887	11	71887	6010	71887	21
<b>Prairies</b>	<b>214941</b>	<b>4</b>	<b>0</b>	<b>6</b>	<b>10</b>	<b>1</b>	<b>122030</b>	<b>71</b>	<b>76076</b>	<b>2</b>	<b>19</b>	<b>5</b>	<b>6</b>	<b>0</b>	<b>76076</b>	<b>155</b>	<b>76172</b>	<b>16</b>	<b>76076</b>	<b>6303</b>	<b>76172</b>	<b>31</b>
<b>British Columbia</b>	<b>66553</b>	<b>3</b>	<b>8</b>	<b>1</b>	<b>10</b>	<b>8</b>	<b>66204</b>	<b>5</b>	<b>14018</b>	<b>1</b>	<b>4</b>	<b>0</b>	<b>7</b>	<b>5</b>	<b>14562</b>	<b>77</b>	<b>14412</b>	<b>56</b>	<b>14233</b>	<b>1222</b>	<b>10256</b>	<b>19</b>
Yukon	4434	0	0	8	8	7	4372	4	N.A.	N.A.	N.A.	N.A.	N.A.	N.A.	N.A.	N.A.	N.A.	N.A.	N.A.	N.A.	N.A.	N.A.
Northwest Territories	1103	0	0	0	0	0	1070	0	1070	0	0	0	1	0	1070	9	1070	1	1070	315	1070	1
Nunavut	1099	0	0	0	0	0	1086	0	1086	3	1	0	0	0	1086	25	1086	5	1086	280	183	0
<b>Territories</b>	<b>6636</b>	<b>0</b>	<b>0</b>	<b>8</b>	<b>8</b>	<b>7</b>	<b>6528</b>	<b>4</b>	<b>2156</b>	<b>3</b>	<b>1</b>	<b>0</b>	<b>1</b>	<b>0</b>	<b>2156</b>	<b>34</b>	<b>2156</b>	<b>6</b>	<b>2156</b>	<b>595</b>	<b>1253</b>	<b>1</b>
<b>CANADA</b>	<b>398845</b>	<b>10</b>	<b>8</b>	<b>29</b>	<b>45</b>	<b>21</b>	<b>268317</b>	<b>124</b>	<b>136248</b>	<b>12</b>	<b>26</b>	<b>10</b>	<b>22</b>	<b>9</b>	<b>135230</b>	<b>584</b>	<b>136069</b>	<b>90</b>	<b>132396</b>	<b>11833</b>	<b>112478</b>	<b>98</b>

The data in the RVDSS report represent surveillance data available at the time of writing. Missing data are denoted by N.A.

Specimens from YT, NT and NU are sent to reference laboratories in other provinces and reported results reflect specimens identified as originating from YT, NT or NU.

Results from British Columbia comprise of specimens from the following sites: BC Children's and Women's Hospital, Children's and Women's Hospital Laboratory, Fraser Health Medical Microbiology Laboratory, Island Health, Providence Health Care, Powell River Hospital, St. Paul's Hospital, Vancouver General Hospital, Victoria General Hospital, BCCDC Public Health Laboratory, Interior Health Authority sites and Northern Health Authority sites.

Delays in the reporting of data may cause data to change retrospectively.

Due to reporting delays, the sum of weekly report totals do not add up to cumulative totals.

Influenza co-detections may cause the sum of A(H1N1)pdm09, A(H3), and A(UnS) positive results to exceed the sum of Total Flu A Positive results.

Figure 1: Number positive laboratory tests for other respiratory viruses by report week, Canada, 2020-21

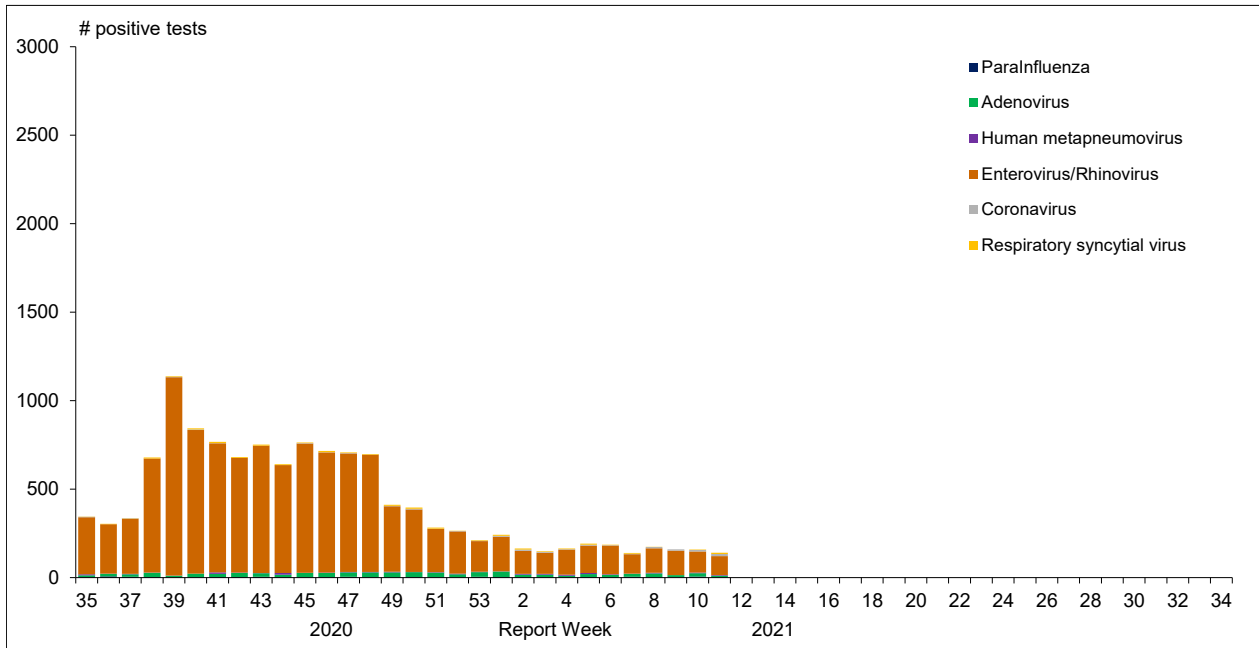


Figure 2 : Positive Influenza Tests (%) in Canada by Region by Week of Report

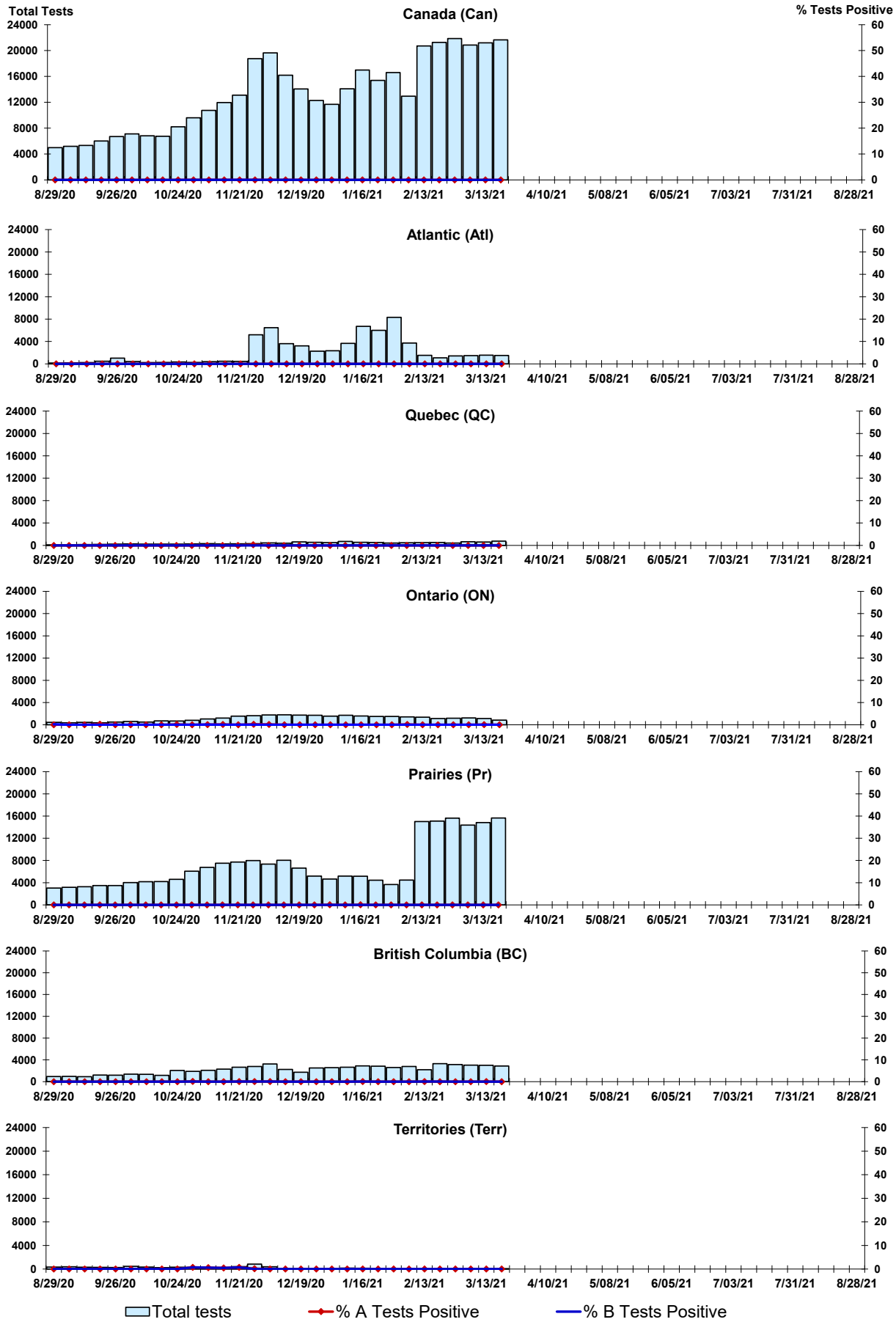


Figure 3: Positive Respiratory syncytial virus (RSV) Tests (%) in Canada by Region by Week of Report

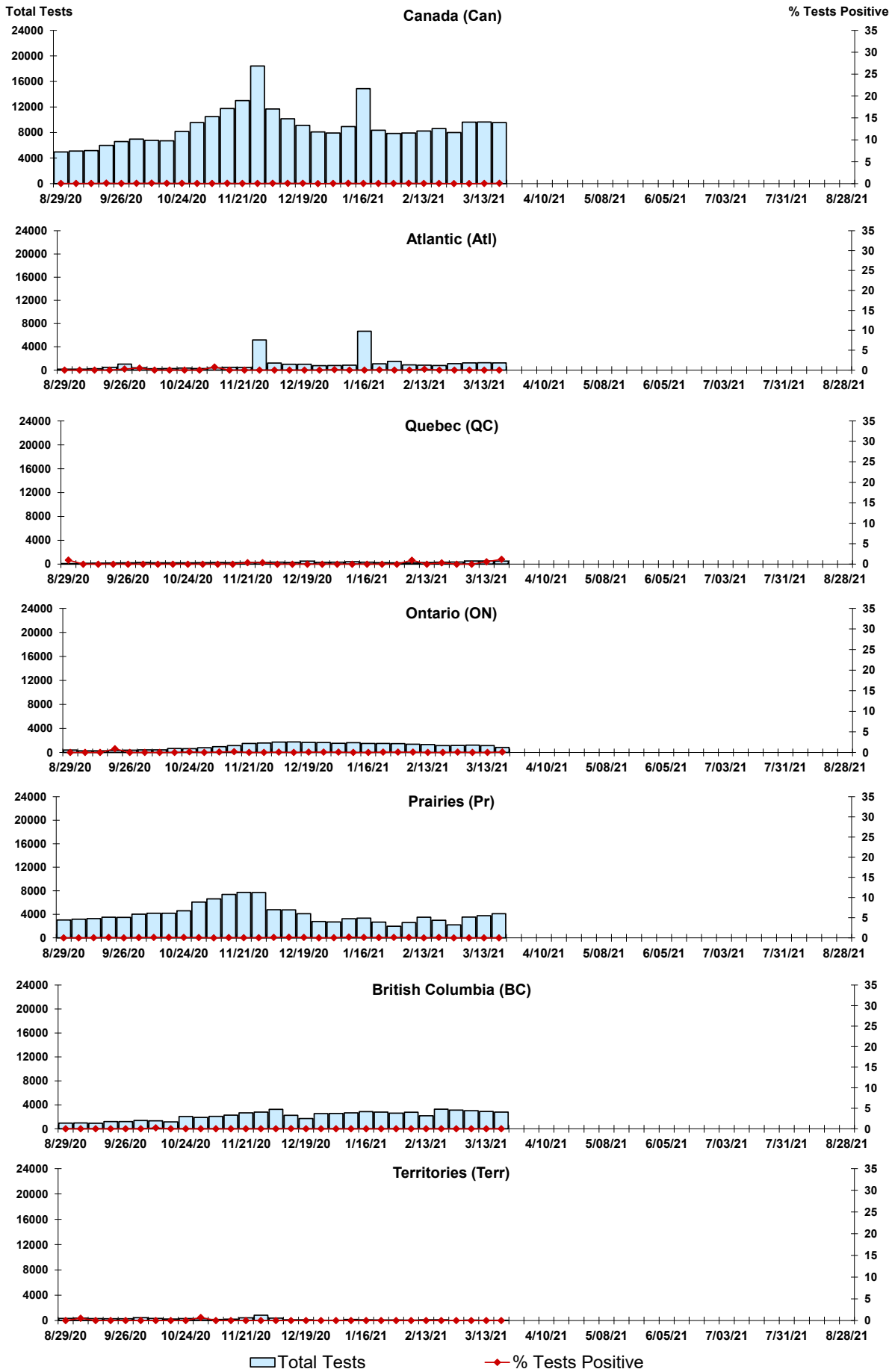


Figure 4: Positive Parainfluenza (PIV) Tests (%) in Canada by Region by Week of Report

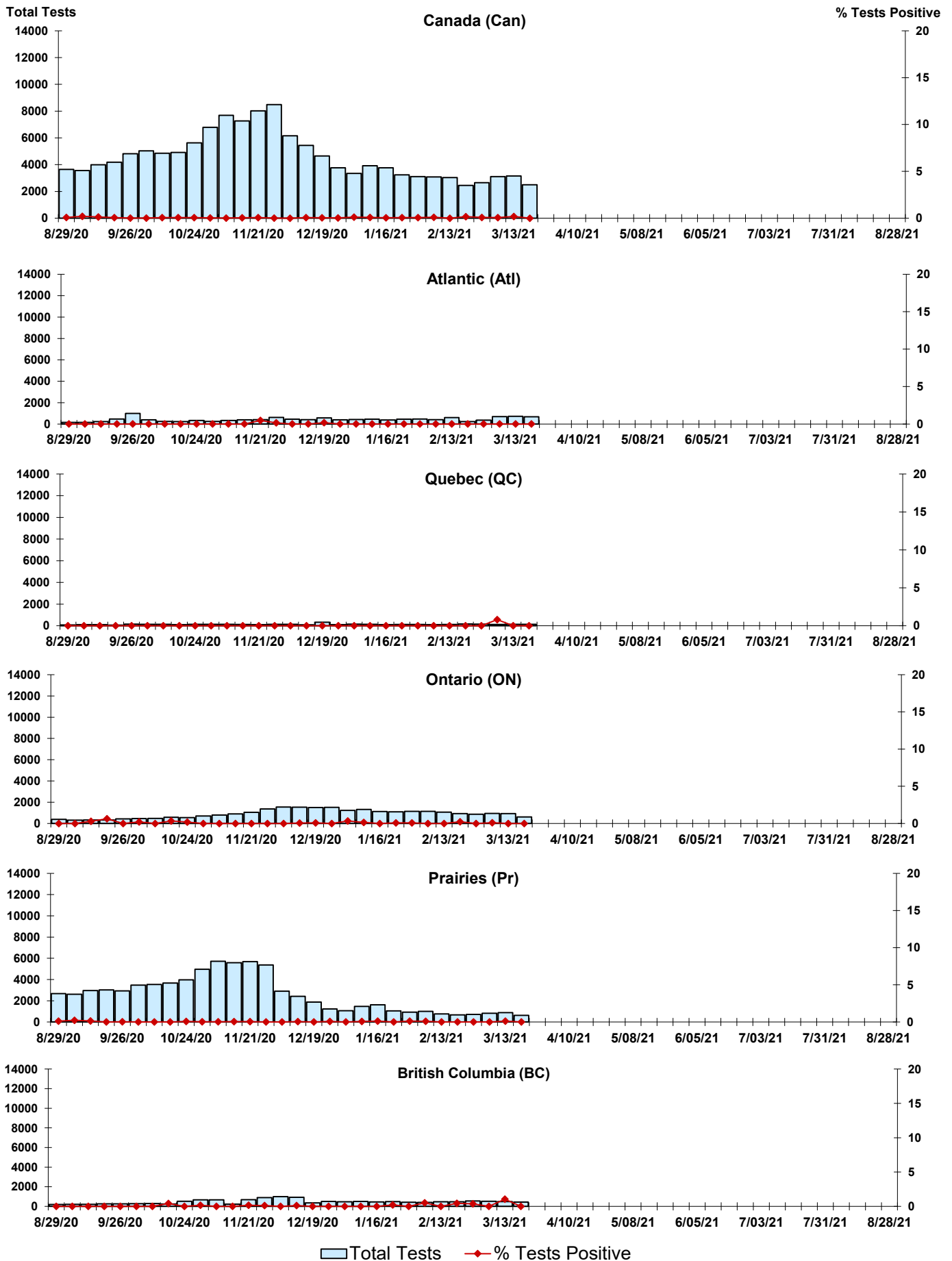


Figure 5: Positive Adenovirus (adeno) Tests (%) in Canada by Region by Week of Report

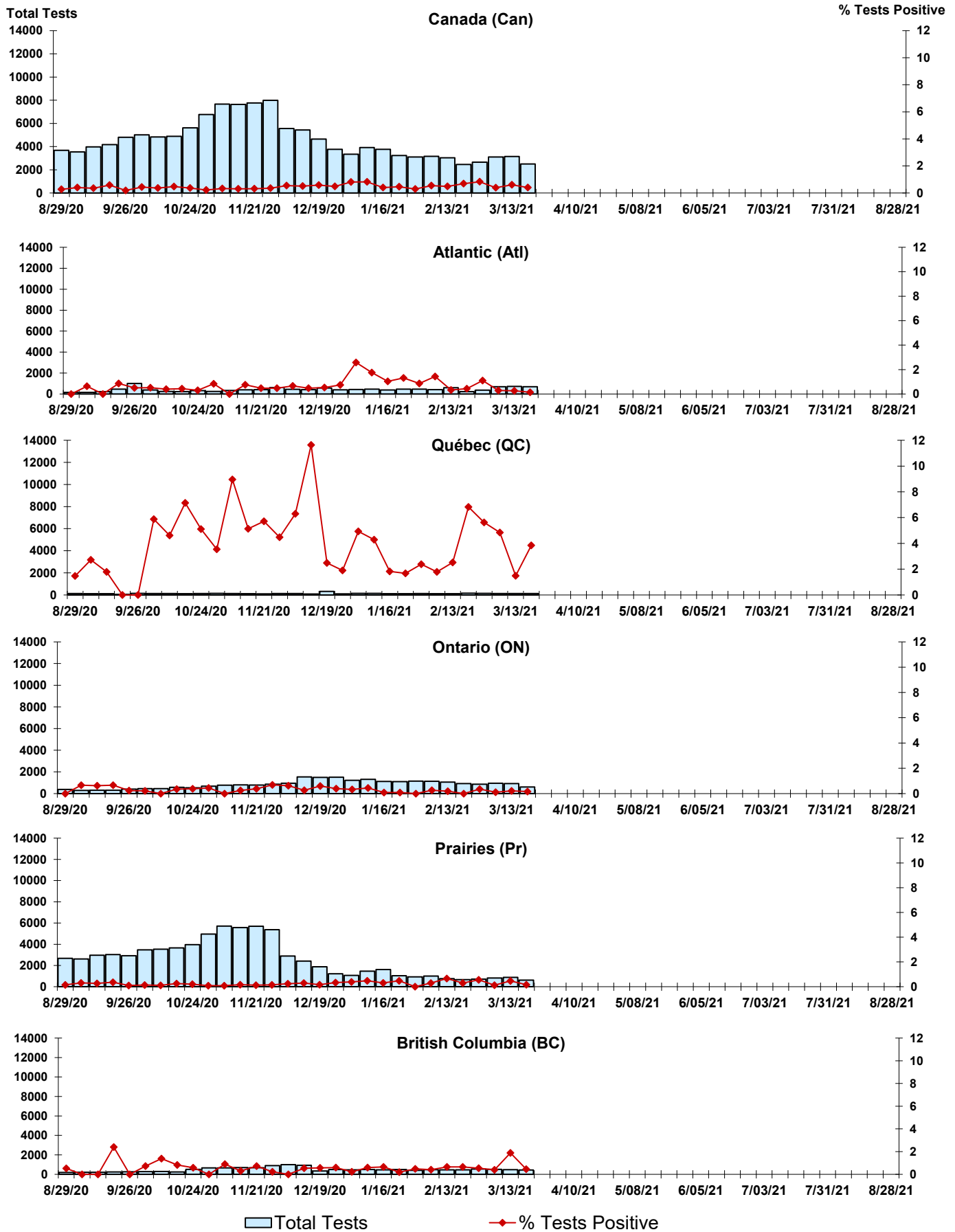


Figure 6: Positive human metapneumovirus (hMPV) Tests (%) in Canada by Region by Week of Report

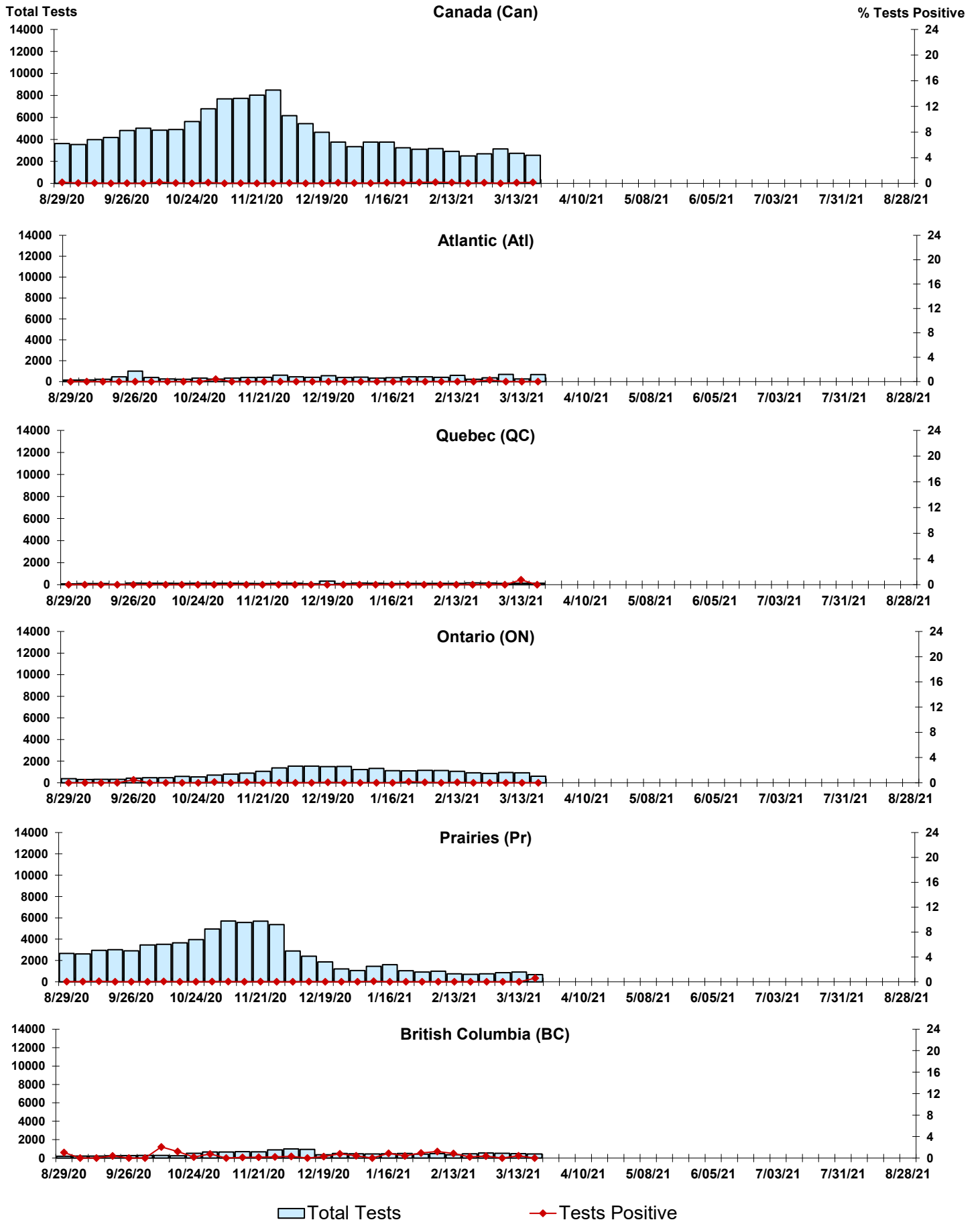




Figure 7: Positive Enterovirus/Rhinovirus (entero/rhino) Tests (%) in Canada by Region by Week of Report

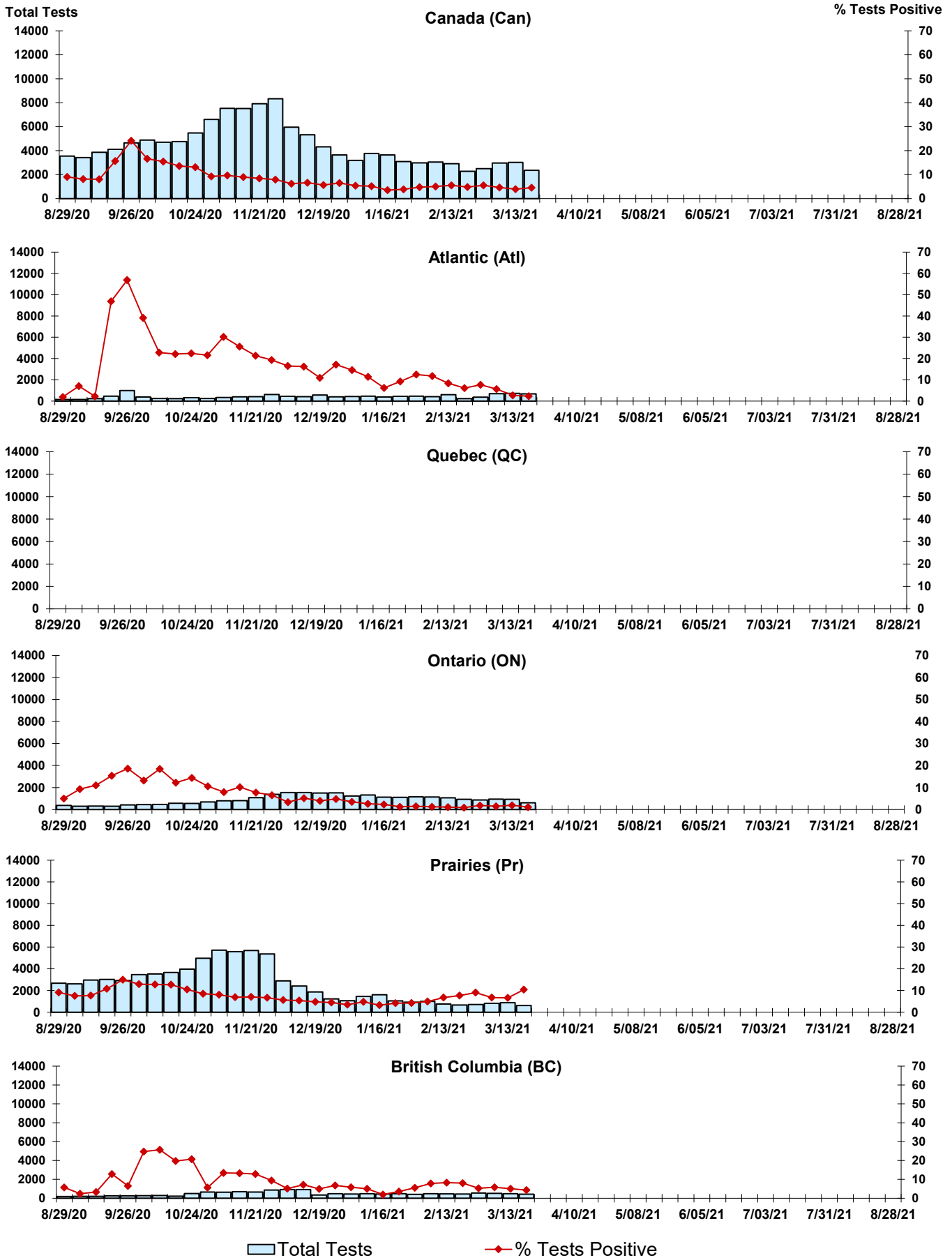
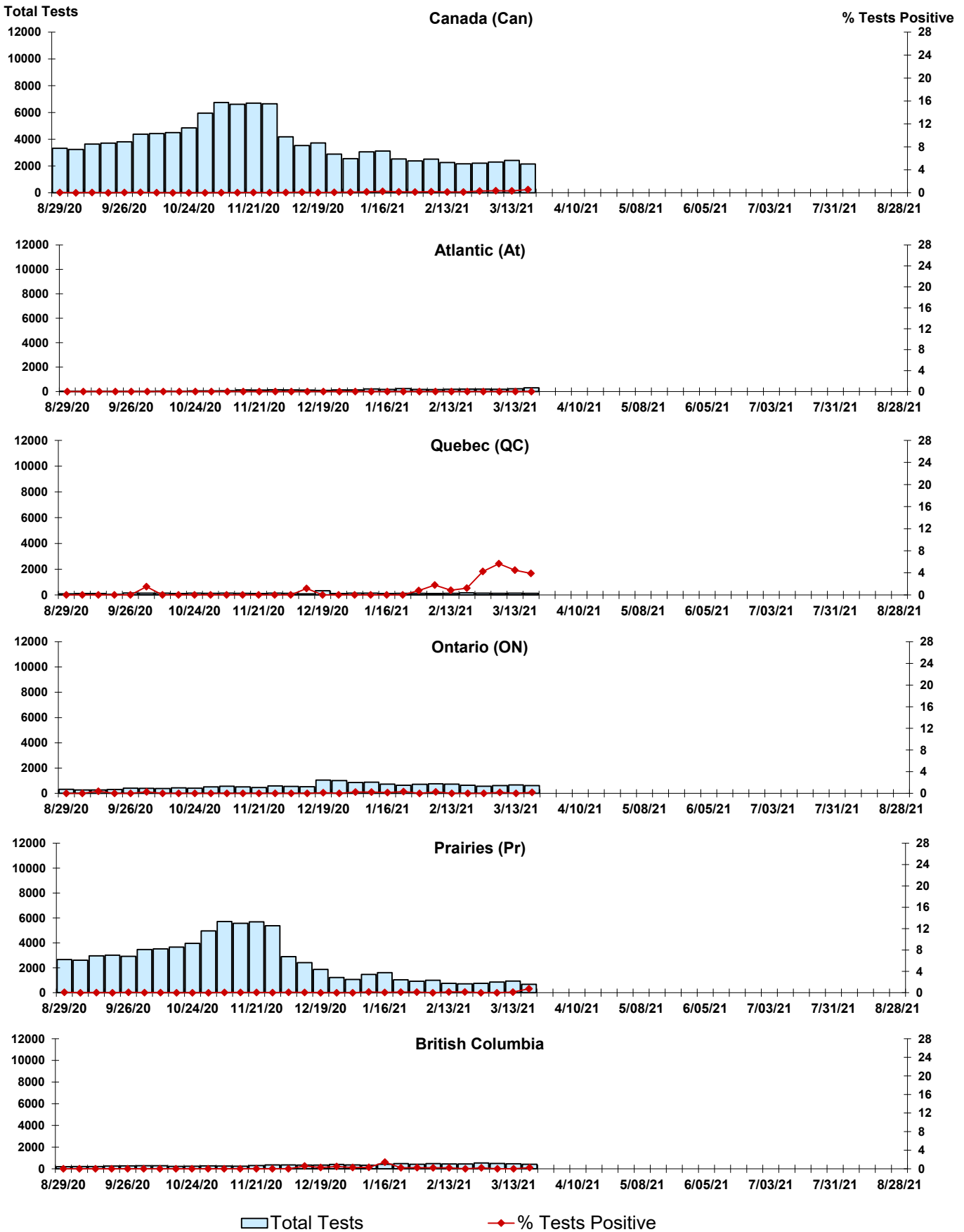


Figure 8: Positive Coronavirus (coron) Tests (%) in Canada by Region by Week of Report



## Abbreviations:

A(H1N1)pdm09: Influenza A(H1N1)pdm09

A(H3): Influenza A(H3N2)

A (UnS): Influenza A (Unsubtyped)

Adeno: Adenovirus

CHEO: Children's Hospital of Eastern Ontario

Coron: Coronavirus

Enterovirus: Enterovirus

hMPV: human metapneumovirus

HSC: Health Sciences Centre

N.A.: Not Applicable

P.H.L.: Public Health Laboratory

P.H.O.L.: Public Health Ontario Laboratory

PIV: Parainfluenza

Rhino: Rhinovirus

RSV: Respiratory syncytial virus

UHN: University Health Network

## Notes:

The data in the RVDSS report represent surveillance data available at the time of writing. Missing data are denoted by N.A.

Specimens from Yukon (YT), Northwest Territories (NT) and Nunavut (NU) are sent to reference laboratories in other provinces. Results reported for the Territories reflect the number of specimens that are identified as originating from YT, NT or NU.

Delays in the reporting of data may cause data to change retrospectively.

Due to reporting delays, the sum of weekly report totals do not add up to cumulative totals.