

# Respiratory Virus Report, Week 12 - ending March 27, 2021

The Respiratory Virus Detection Surveillance System collects data from select laboratories across Canada on the number of tests performed and the number of tests positive for influenza and other respiratory viruses. Data are reported on a weekly basis year-round to the Centre for Immunization and Respiratory Infectious Diseases (CIRID), Public Health Agency of Canada. These data are also summarized in the weekly FluWatch report.

In this Respiratory Virus Report, the number of detections of coronavirus reflects only seasonal human coronaviruses, not the novel pandemic coronavirus (SARS-CoV2) that causes COVID-19. For information on COVID-19, see the [Coronavirus disease \(COVID-19\): Outbreak](#)

**Table 1: Respiratory Virus Detections/Isolations for the week ending March 27, 2021 (Reporting Week 202112)**

Reporting Laboratory	Flu Tested	A(H1N1)pdm09 Positive	A(H3) Positive	A(UnS) Positive	Total Flu A Positive	Total Flu B Positive	RSV Tested	RSV Positive	PIV Tested	PIV 1 Positive	PIV 2 Positive	PIV 3 Positive	PIV 4 Positive	Other PIV Positive	Adeno Tested	Adeno Positive	hMPV Tested	hMPV Positive	Entero/Rhino Tested	Entero/Rhino Positive	Coron Tested	Coron Positive
Newfoundland	340	0	0	0	0	0	340	0	340	0	0	0	0	0	335	1	340	0	340	8	N.A.	N.A.
Prince Edward Island	170	0	0	0	0	0	170	0	170	0	0	0	0	0	170	0	170	0	170	12	170	0
Nova Scotia	524	0	0	0	0	0	524	0	34	0	0	0	0	0	34	0	34	0	34	1	34	0
New Brunswick	449	0	0	0	0	0	449	0	139	0	0	0	0	0	139	0	139	0	139	0	139	0
<b>Atlantic</b>	<b>1483</b>	<b>0</b>	<b>0</b>	<b>0</b>	<b>0</b>	<b>0</b>	<b>1483</b>	<b>0</b>	<b>683</b>	<b>0</b>	<b>0</b>	<b>0</b>	<b>0</b>	<b>0</b>	<b>678</b>	<b>1</b>	<b>683</b>	<b>0</b>	<b>683</b>	<b>21</b>	<b>343</b>	<b>0</b>
Région Nord-Est	121	0	0	0	0	0	11	0	0	0	0	0	0	0	0	0	0	0	N.A.	N.A.	0	0
Québec-Chaudière-Appalaches	13	0	0	0	0	0	14	0	13	0	0	0	0	0	13	1	13	0	N.A.	N.A.	13	0
Centre-du-Québec	31	0	0	0	0	0	31	0	7	0	0	0	0	0	7	0	7	0	N.A.	N.A.	7	0
Montréal-Laval	338	0	0	0	0	0	338	2	108	0	0	0	0	0	108	2	108	1	N.A.	N.A.	108	6
Ouest du Québec	128	0	0	0	0	0	128	0	0	0	0	0	0	0	0	0	0	0	N.A.	N.A.	0	0
Montérégie	99	0	0	0	0	0	99	0	0	0	0	0	0	0	0	0	0	0	N.A.	N.A.	0	0
<b>Province of Québec</b>	<b>730</b>	<b>0</b>	<b>0</b>	<b>0</b>	<b>0</b>	<b>0</b>	<b>621</b>	<b>2</b>	<b>128</b>	<b>0</b>	<b>0</b>	<b>0</b>	<b>0</b>	<b>0</b>	<b>128</b>	<b>3</b>	<b>128</b>	<b>1</b>	<b>N.A.</b>	<b>N.A.</b>	<b>128</b>	<b>6</b>
P.H.O.L. - Ottawa	3	0	0	0	0	0	3	0	3	0	0	0	0	0	3	0	3	0	3	0	3	0
CHEO - Ottawa	N.A.	N.A.	N.A.	N.A.	N.A.	N.A.	N.A.	N.A.	N.A.	N.A.	N.A.	N.A.	N.A.	N.A.	N.A.	N.A.	N.A.	N.A.	N.A.	N.A.	N.A.	N.A.
P.H.O.L. - Kingston	16	0	0	0	0	0	16	0	7	0	0	0	0	0	7	1	7	0	7	4	7	0
UHN / Mount Sinai Hospital	527	0	0	0	0	0	527	0	485	0	0	0	0	0	485	0	485	0	485	5	485	0
P.H.O.L. - Toronto	116	0	0	0	0	0	116	0	82	0	0	0	0	1	82	0	82	0	82	0	82	0
Sick Kids Hospital - Toronto	N.A.	N.A.	N.A.	N.A.	N.A.	N.A.	N.A.	N.A.	N.A.	N.A.	N.A.	N.A.	N.A.	N.A.	N.A.	N.A.	N.A.	N.A.	N.A.	N.A.	N.A.	N.A.
Sunnybrook & Women's College HSC	N.A.	N.A.	N.A.	N.A.	N.A.	N.A.	N.A.	N.A.	N.A.	N.A.	N.A.	N.A.	N.A.	N.A.	N.A.	N.A.	N.A.	N.A.	N.A.	N.A.	N.A.	N.A.
P.H.O.L. - Sault Ste. Marie	16	0	0	0	0	0	16	0	2	0	0	0	0	0	2	0	2	0	2	0	2	0
P.H.O.L. - Timmins	5	0	0	0	0	0	5	0	3	0	0	0	0	0	3	0	3	0	3	0	3	0
St. Joseph's - London	N.A.	N.A.	N.A.	N.A.	N.A.	N.A.	N.A.	N.A.	N.A.	N.A.	N.A.	N.A.	N.A.	N.A.	N.A.	N.A.	N.A.	N.A.	N.A.	N.A.	N.A.	N.A.
P.H.O.L. - London	26	0	0	0	0	0	26	0	7	0	0	0	0	0	7	0	7	0	7	0	7	0
P.H.O.L. - Orillia	9	0	0	0	0	0	9	0	0	0	0	0	0	0	0	0	0	0	0	0	0	0
P.H.O.L. - Thunder Bay	4	0	0	0	0	0	4	0	4	0	0	0	0	0	4	0	4	0	4	1	4	0
P.H.O.L. - Sudbury	11	0	0	0	0	0	11	0	0	0	0	0	0	0	0	0	0	0	0	0	0	0
P.H.O.L. - Hamilton	26	0	0	0	0	0	26	0	16	0	0	0	0	0	16	0	16	0	16	3	16	0
P.H.O.L. - Peterborough	18	0	0	0	0	0	18	0	13	0	0	0	0	0	13	0	13	0	13	0	13	0
St. Joseph's - Hamilton	219	0	0	0	0	0	219	1	219	0	0	1	0	0	219	0	219	0	219	8	0	0
<b>Province of Ontario</b>	<b>996</b>	<b>0</b>	<b>0</b>	<b>0</b>	<b>0</b>	<b>0</b>	<b>996</b>	<b>1</b>	<b>841</b>	<b>0</b>	<b>0</b>	<b>1</b>	<b>0</b>	<b>1</b>	<b>841</b>	<b>1</b>	<b>841</b>	<b>0</b>	<b>841</b>	<b>21</b>	<b>622</b>	<b>0</b>
Province of Manitoba	1420	0	0	0	0	0	1420	0	19	0	0	0	0	0	19	0	59	0	19	3	59	0
Province of Saskatchewan	14697	0	0	0	0	0	1346	1	55	0	0	0	0	0	55	0	55	0	55	3	55	0
Province of Alberta	2449	0	0	0	0	0	491	0	491	0	0	0	0	0	491	3	491	0	491	45	491	1
<b>Prairies</b>	<b>18566</b>	<b>0</b>	<b>0</b>	<b>0</b>	<b>0</b>	<b>0</b>	<b>3257</b>	<b>1</b>	<b>565</b>	<b>0</b>	<b>0</b>	<b>0</b>	<b>0</b>	<b>0</b>	<b>565</b>	<b>3</b>	<b>605</b>	<b>0</b>	<b>565</b>	<b>51</b>	<b>605</b>	<b>1</b>
<b>British Columbia</b>	<b>2921</b>	<b>0</b>	<b>0</b>	<b>0</b>	<b>0</b>	<b>0</b>	<b>2912</b>	<b>0</b>	<b>447</b>	<b>0</b>	<b>0</b>	<b>0</b>	<b>3</b>	<b>0</b>	<b>447</b>	<b>1</b>	<b>447</b>	<b>1</b>	<b>444</b>	<b>26</b>	<b>418</b>	<b>0</b>
Yukon	59	0	0	0	0	0	59	0	N.A.	N.A.	N.A.	N.A.	N.A.	N.A.	N.A.	N.A.	N.A.	N.A.	N.A.	N.A.	N.A.	N.A.
Northwest Territories	4	0	0	0	0	0	3	0	3	0	0	0	0	0	3	0	3	0	3	1	3	0
Nunavut	4	0	0	0	0	0	2	0	2	0	0	0	0	0	2	0	2	0	2	0	1	0
<b>Territories</b>	<b>67</b>	<b>0</b>	<b>0</b>	<b>0</b>	<b>0</b>	<b>0</b>	<b>64</b>	<b>0</b>	<b>5</b>	<b>0</b>	<b>0</b>	<b>0</b>	<b>0</b>	<b>0</b>	<b>5</b>	<b>0</b>	<b>5</b>	<b>0</b>	<b>5</b>	<b>1</b>	<b>4</b>	<b>0</b>
<b>CANADA</b>	<b>24763</b>	<b>0</b>	<b>0</b>	<b>0</b>	<b>0</b>	<b>0</b>	<b>9333</b>	<b>4</b>	<b>2669</b>	<b>0</b>	<b>0</b>	<b>1</b>	<b>3</b>	<b>1</b>	<b>2664</b>	<b>9</b>	<b>2709</b>	<b>2</b>	<b>2538</b>	<b>120</b>	<b>2120</b>	<b>7</b>

The data in the RVDSS report represent surveillance data available at the time of writing. Missing data are denoted by N.A.

Specimens from Yukon (YT), Northwest Territories (NT) and Nunavut (NU) are sent to reference laboratories in other provinces and reported results reflect specimens identified as originating from YT, NT or NU.

Results from British Columbia comprise of specimens from the following sites: BC Children's and Women's Hospital, Fraser Health Medical Microbiology Laboratory, Island Health, Providence Health Care, Powell River Hospital, St. Paul's Hospital, Vancouver General Hospital, Victoria General Hospital, BCCDC Public Health Laboratory, Interior Health Authority sites and Northern Health Authority sites.

Delays in the reporting of data may cause data to change retrospectively.

Influenza co-detections may cause the sum of A(H1N1)pdm09, A(H3), and A(UnS) positive results to exceed the sum of Total Flu A Positive results.

**Table 2: Respiratory Virus Detections/Isolations for the period August 23, 2020 - March 27, 2021 (Reporting Weeks 202035-202112)**

Reporting Laboratory	Flu Tested	A(H1N1)pdm09 Positive	A(H3) Positive	A(UnS) Positive	Total Flu A Positive	Total Flu B Positive	RSV Tested	RSV Positive	PIV Tested	PIV 1 Positive	PIV 2 Positive	PIV 3 Positive	PIV 4 Positive	Other PIV Positive	Adeno Tested	Adeno Positive	hMPV Tested	hMPV Positive	Entero/Rhino Tested	Entero/Rhino Positive	Coron Tested	Coron Positive
Newfoundland	9582	0	0	0	0	0	9582	10	9582	1	0	1	0	0	9594	44	8995	2	9582	1956	N.A.	N.A.
Prince Edward Island	2744	0	0	0	0	0	2744	3	2740	2	0	0	0	0	2740	29	2740	0	2740	287	2740	0
Nova Scotia	3750	0	0	0	0	0	3753	0	495	0	0	0	0	0	495	7	495	0	495	63	495	0
New Brunswick	50356	0	0	0	1	1	17797	0	834	0	0	0	0	0	825	8	825	0	825	48	780	0
<b>Atlantic</b>	<b>66432</b>	<b>0</b>	<b>0</b>	<b>0</b>	<b>0</b>	<b>1</b>	<b>33876</b>	<b>13</b>	<b>13651</b>	<b>3</b>	<b>0</b>	<b>1</b>	<b>0</b>	<b>0</b>	<b>13654</b>	<b>88</b>	<b>13055</b>	<b>2</b>	<b>13642</b>	<b>2354</b>	<b>4015</b>	<b>0</b>
Région Nord-Est	3210	0	0	0	0	0	871	1	0	0	0	0	0	0	0	0	0	0	N.A.	N.A.	0	0
Québec-Chaudière-Appalaches	675	0	0	1	1	0	747	0	458	0	0	0	0	0	460	25	455	0	N.A.	N.A.	438	7
Centre-du-Québec	759	0	0	0	0	0	768	1	247	0	0	0	0	0	245	17	247	0	N.A.	N.A.	244	1
Montréal-Laval	6083	0	0	0	0	0	5126	15	3274	0	0	1	0	0	3328	117	3258	2	N.A.	N.A.	3258	31
Ouest du Québec	1403	0	0	0	0	0	1347	0	0	0	0	0	0	0	0	0	0	0	N.A.	N.A.	0	0
Montérégie	430	0	0	0	0	0	430	0	0	0	0	0	0	0	0	0	0	0	N.A.	N.A.	0	0
<b>Province of Québec</b>	<b>12560</b>	<b>0</b>	<b>0</b>	<b>1</b>	<b>1</b>	<b>0</b>	<b>9289</b>	<b>17</b>	<b>3979</b>	<b>0</b>	<b>0</b>	<b>1</b>	<b>0</b>	<b>0</b>	<b>4033</b>	<b>159</b>	<b>3960</b>	<b>2</b>	<b>N.A.</b>	<b>N.A.</b>	<b>3940</b>	<b>39</b>
P.H.O.L. - Ottawa	457	0	0	0	0	0	457	1	387	0	0	0	0	0	387	0	386	0	387	22	386	1
CHEO - Ottawa	4126	0	0	1	1	1	3723	5	625	0	0	0	0	0	625	12	625	1	625	71	625	0
P.H.O.L. - Kingston	753	0	0	1	1	0	753	0	500	0	0	0	0	0	500	4	494	0	500	106	494	0
UHN / Mount Sinai Hospital	10072	2	0	2	4	1	10003	6	9509	3	2	3	8	0	7883	9	9469	8	9266	96	7305	6
P.H.O.L. - Toronto	5114	0	0	0	0	0	5111	2	4462	0	0	0	0	3	4463	12	4461	0	4462	144	4461	4
Sick Kids Hospital - Toronto	1007	0	0	0	0	0	0	0	1007	0	0	0	0	0	1007	15	1007	0	1007	94	1007	1
Sunnybrook & Women's College HSC	0	0	0	0	0	0	0	0	0	0	0	0	0	0	0	0	0	0	0	0	0	0
P.H.O.L. - Sault Ste. Marie	143	0	0	2	2	0	141	0	89	0	0	0	0	0	89	0	89	0	89	6	89	0
P.H.O.L. - Timmins	601	0	0	0	0	0	601	0	155	0	0	0	0	0	155	0	154	0	155	30	154	0
St. Joseph's - London	218	0	0	0	0	0	218	0	55	0	0	0	0	0	55	0	55	0	91	8	36	0
P.H.O.L. - London	1740	1	0	5	6	2	1730	0	1229	0	0	0	0	2	1229	2	1224	0	1229	125	1224	3
P.H.O.L. - Orillia	358	0	0	1	1	0	356	0	189	0	0	0	0	0	189	1	189	0	189	12	189	0
P.H.O.L. - Thunder Bay	382	0	0	0	0	0	382	0	370	0	0	0	0	0	371	2	370	0	370	136	370	0
P.H.O.L. - Sudbury	435	0	0	0	0	0	433	0	320	0	0	0	0	0	320	2	320	0	320	28	320	0
P.H.O.L. - Hamilton	1401	0	0	0	0	0	1350	1	1136	0	0	0	0	0	1136	2	1136	0	1136	98	1136	0
P.H.O.L. - Peterborough	431	0	0	1	1	0	385	0	293	0	0	0	0	0	293	0	293	0	293	20	293	0
St. Joseph's - Hamilton	8085	0	0	0	0	0	8085	2	8085	0	0	1	0	0	8085	18	8085	0	8085	418	0	0
<b>Province of Ontario</b>	<b>35323</b>	<b>3</b>	<b>0</b>	<b>13</b>	<b>16</b>	<b>4</b>	<b>33728</b>	<b>17</b>	<b>28411</b>	<b>3</b>	<b>2</b>	<b>4</b>	<b>8</b>	<b>5</b>	<b>26787</b>	<b>79</b>	<b>28357</b>	<b>9</b>	<b>28204</b>	<b>1414</b>	<b>18089</b>	<b>15</b>
Manitoba	39920	0	0	0	0	1	39910	68	2671	0	1	1	0	0	2671	17	2807	1	2671	138	2807	3
Province of Saskatchewan	87557	0	0	0	0	0	13080	4	1592	0	0	1	1	0	1592	10	1592	4	1592	161	1592	7
Province of Alberta	107169	4	0	6	10	0	72400	0	72400	2	18	3	5	0	72400	131	72400	11	72400	6057	72400	22
<b>Prairies</b>	<b>234646</b>	<b>4</b>	<b>0</b>	<b>6</b>	<b>10</b>	<b>1</b>	<b>125390</b>	<b>72</b>	<b>76663</b>	<b>2</b>	<b>19</b>	<b>5</b>	<b>6</b>	<b>0</b>	<b>76663</b>	<b>158</b>	<b>76799</b>	<b>16</b>	<b>76663</b>	<b>6356</b>	<b>76799</b>	<b>32</b>
<b>British Columbia</b>	<b>69474</b>	<b>3</b>	<b>8</b>	<b>1</b>	<b>10</b>	<b>8</b>	<b>69116</b>	<b>5</b>	<b>14465</b>	<b>1</b>	<b>4</b>	<b>0</b>	<b>10</b>	<b>5</b>	<b>15009</b>	<b>78</b>	<b>14859</b>	<b>57</b>	<b>14677</b>	<b>1248</b>	<b>10674</b>	<b>19</b>
Yukon	4493	0	0	8	8	7	4431	4	N.A.	N.A.	N.A.	N.A.	N.A.	N.A.	N.A.	N.A.	N.A.	N.A.	N.A.	N.A.	N.A.	N.A.
Northwest Territories	1109	0	0	0	0	0	1075	0	1075	0	0	0	1	0	1075	9	1075	1	1075	316	1075	1
Nunavut	1106	0	0	0	0	0	1091	0	1091	3	1	0	0	0	1091	25	1091	5	1091	280	184	0
<b>Territories</b>	<b>6708</b>	<b>0</b>	<b>0</b>	<b>8</b>	<b>8</b>	<b>7</b>	<b>6597</b>	<b>4</b>	<b>2166</b>	<b>3</b>	<b>1</b>	<b>0</b>	<b>1</b>	<b>0</b>	<b>2166</b>	<b>34</b>	<b>2166</b>	<b>6</b>	<b>2166</b>	<b>596</b>	<b>1259</b>	<b>1</b>
<b>CANADA</b>	<b>425143</b>	<b>10</b>	<b>8</b>	<b>29</b>	<b>45</b>	<b>21</b>	<b>277996</b>	<b>128</b>	<b>139335</b>	<b>12</b>	<b>26</b>	<b>11</b>	<b>25</b>	<b>10</b>	<b>138312</b>	<b>596</b>	<b>139196</b>	<b>92</b>	<b>135352</b>	<b>11968</b>	<b>114776</b>	<b>106</b>

The data in the RVDSS report represent surveillance data available at the time of writing. Missing data are denoted by N.A.

Specimens from YT, NT and NU are sent to reference laboratories in other provinces and reported results reflect specimens identified as originating from YT, NT or NU.

Results from British Columbia comprise of specimens from the following sites: BC Children's and Women's Hospital, Children's and Women's Hospital Laboratory, Fraser Health Medical Microbiology Laboratory, Island Health, Providence Health Care, Powell River Hospital, St. Paul's Hospital, Vancouver General Hospital, Victoria General Hospital, BCCDC Public Health Laboratory, Interior Health Authority sites and Northern Health Authority sites.

Delays in the reporting of data may cause data to change retrospectively.

Due to reporting delays, the sum of weekly report totals do not add up to cumulative totals.

Influenza co-detections may cause the sum of A(H1N1)pdm09, A(H3), and A(UnS) positive results to exceed the sum of Total Flu A Positive results.

Figure 1: Number positive laboratory tests for other respiratory viruses by report week, Canada, 2020-21

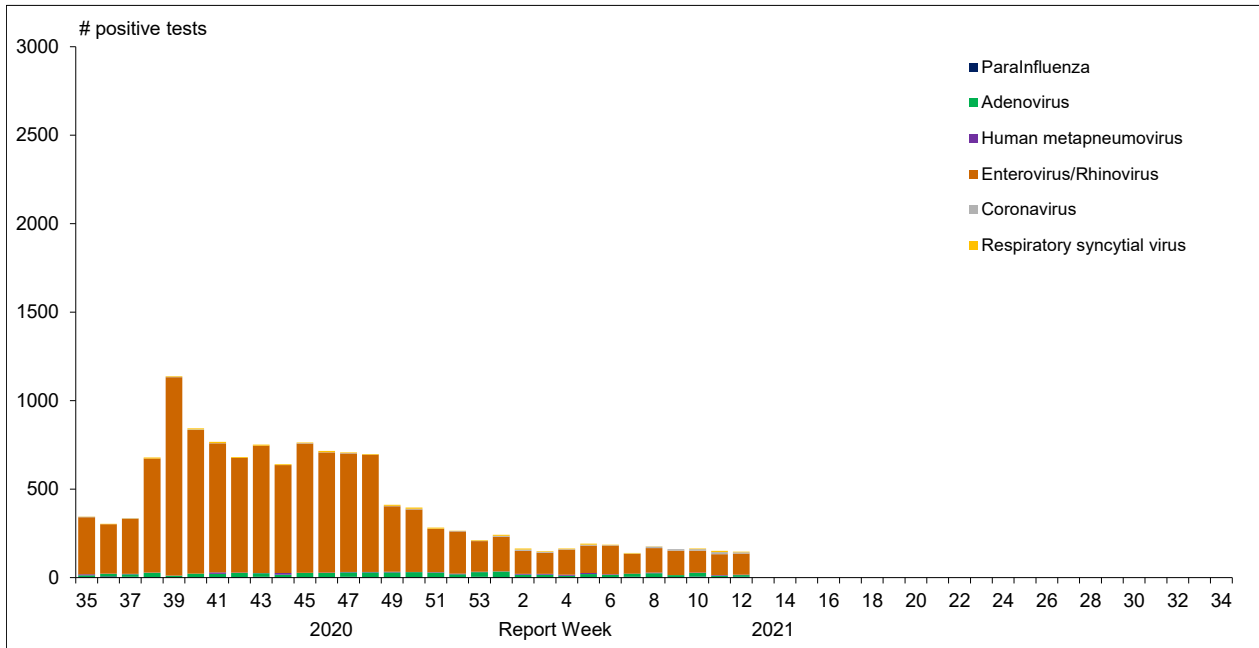


Figure 2 : Positive Influenza Tests (%) in Canada by Region by Week of Report

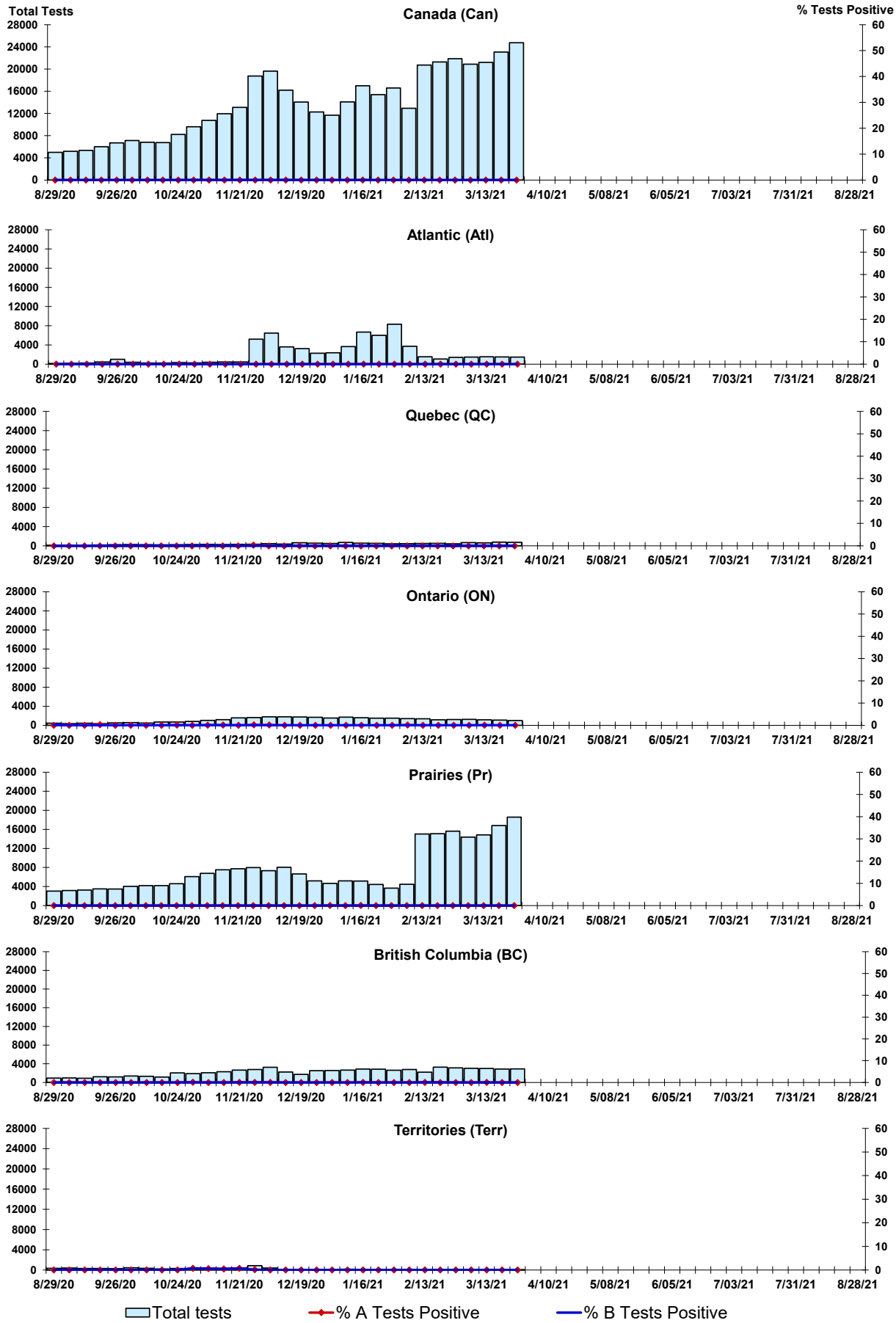


Figure 3: Positive Respiratory syncytial virus (RSV) Tests (%) in Canada by Region by Week of Report

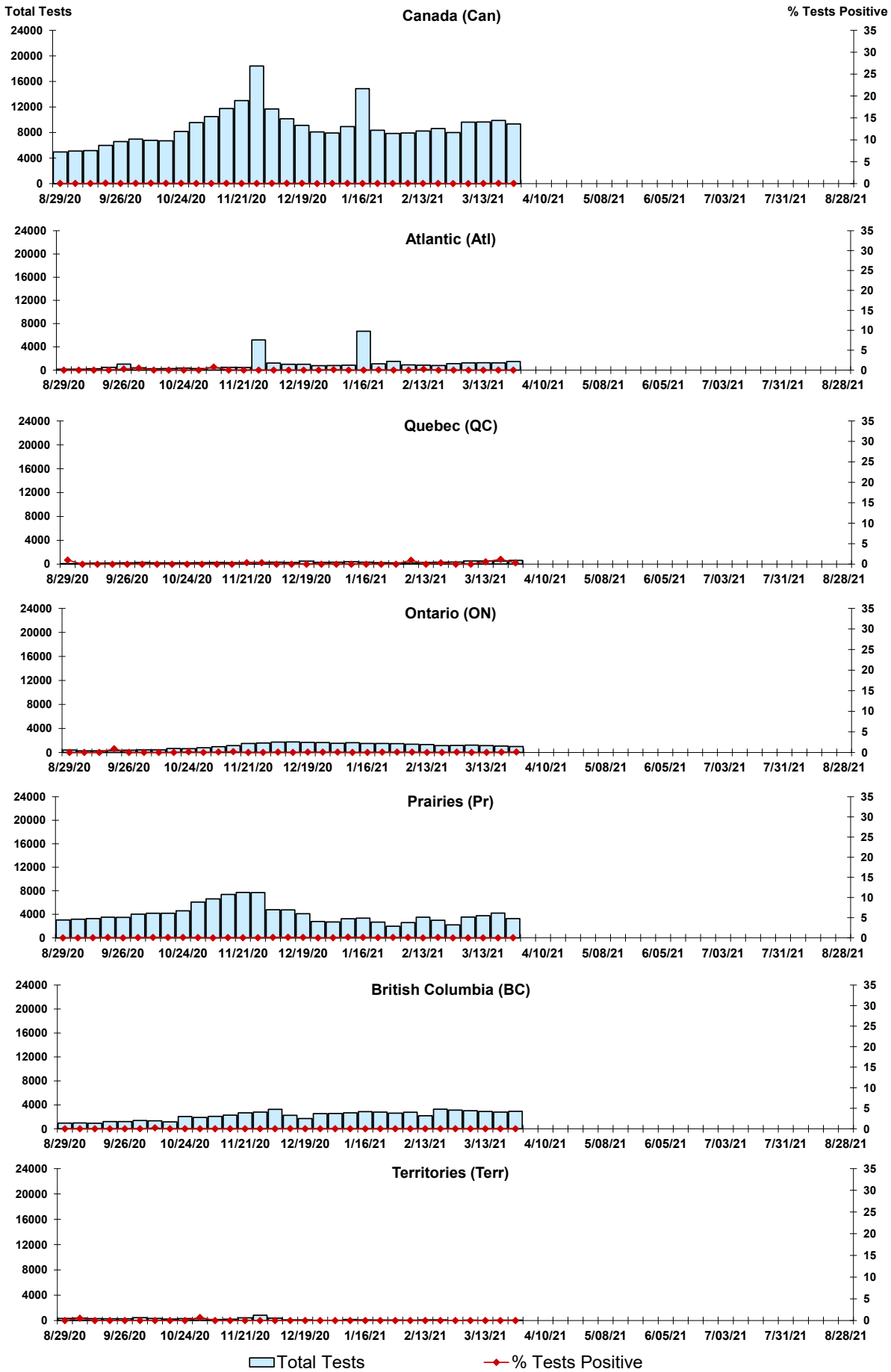
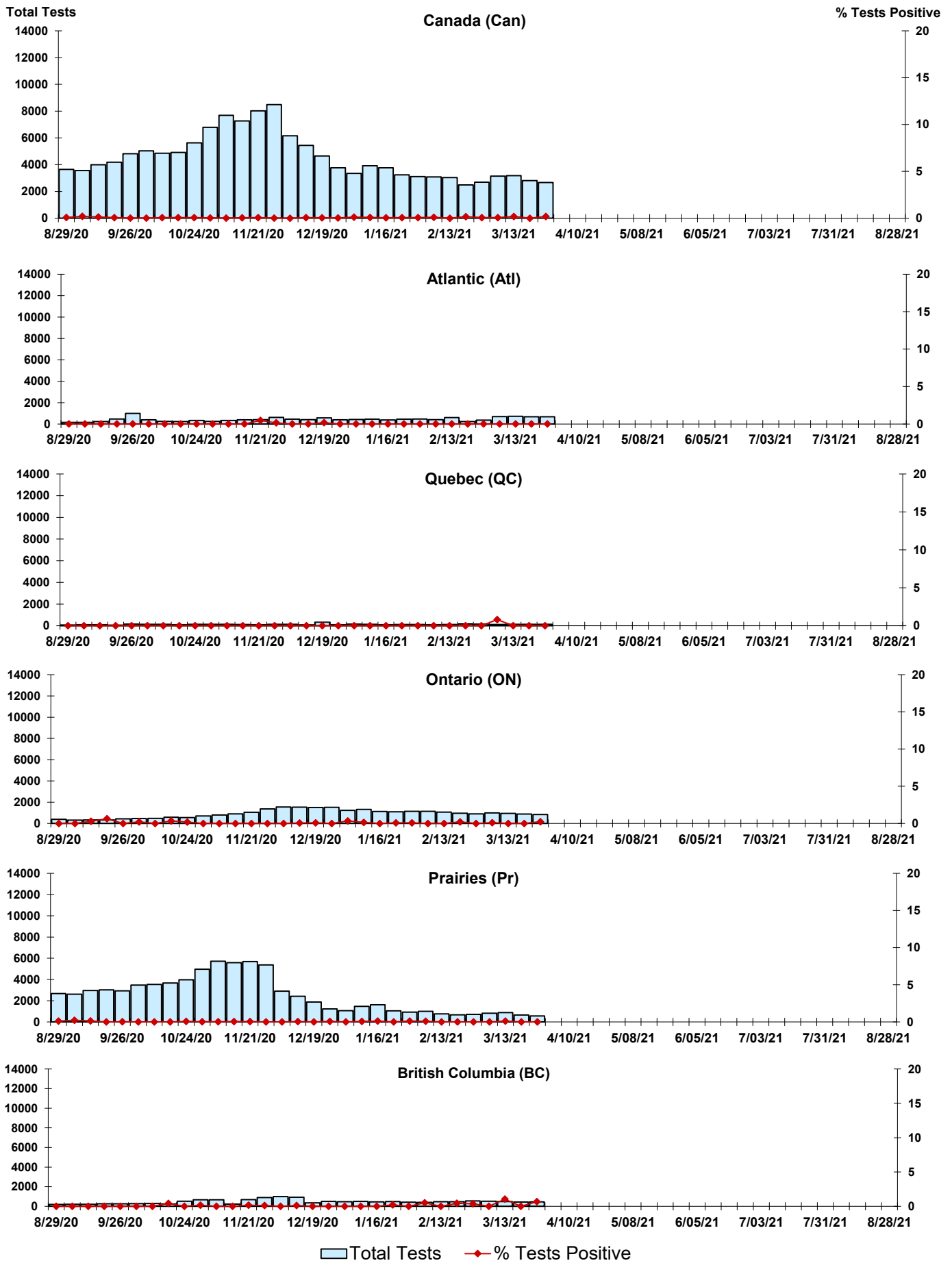


Figure 4: Positive Parainfluenza (PIV) Tests (%) in Canada by Region by Week of Report



Legend: Total Tests (light blue bar), % Tests Positive (red diamond)

Figure 5: Positive Adenovirus (adeno) Tests (%) in Canada by Region by Week of Report

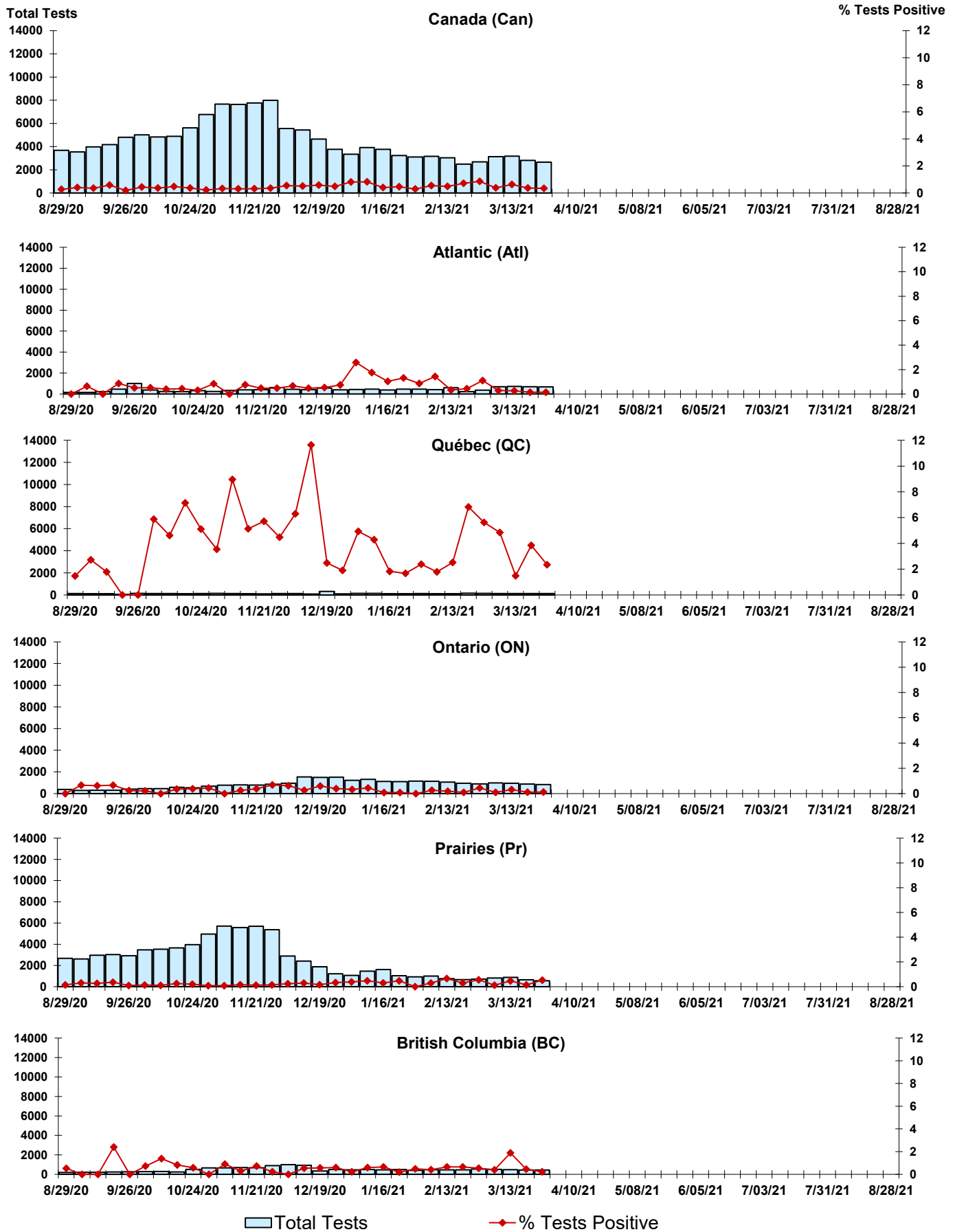


Figure 6: Positive human metapneumovirus (hMPV) Tests (%) in Canada by Region by Week of Report

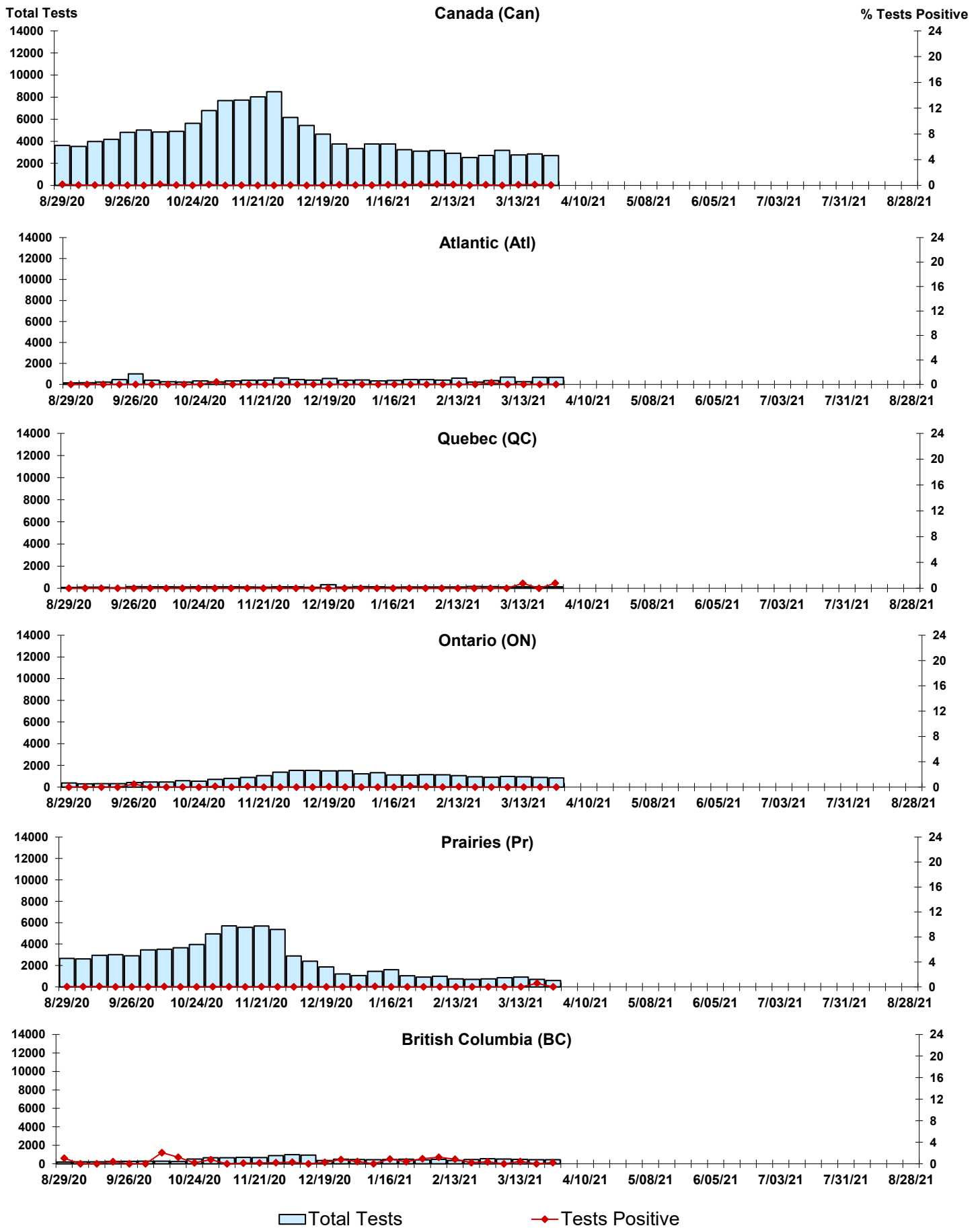




Figure 7: Positive Enterovirus/Rhinovirus (entero/rhino) Tests (%) in Canada by Region by Week of Report

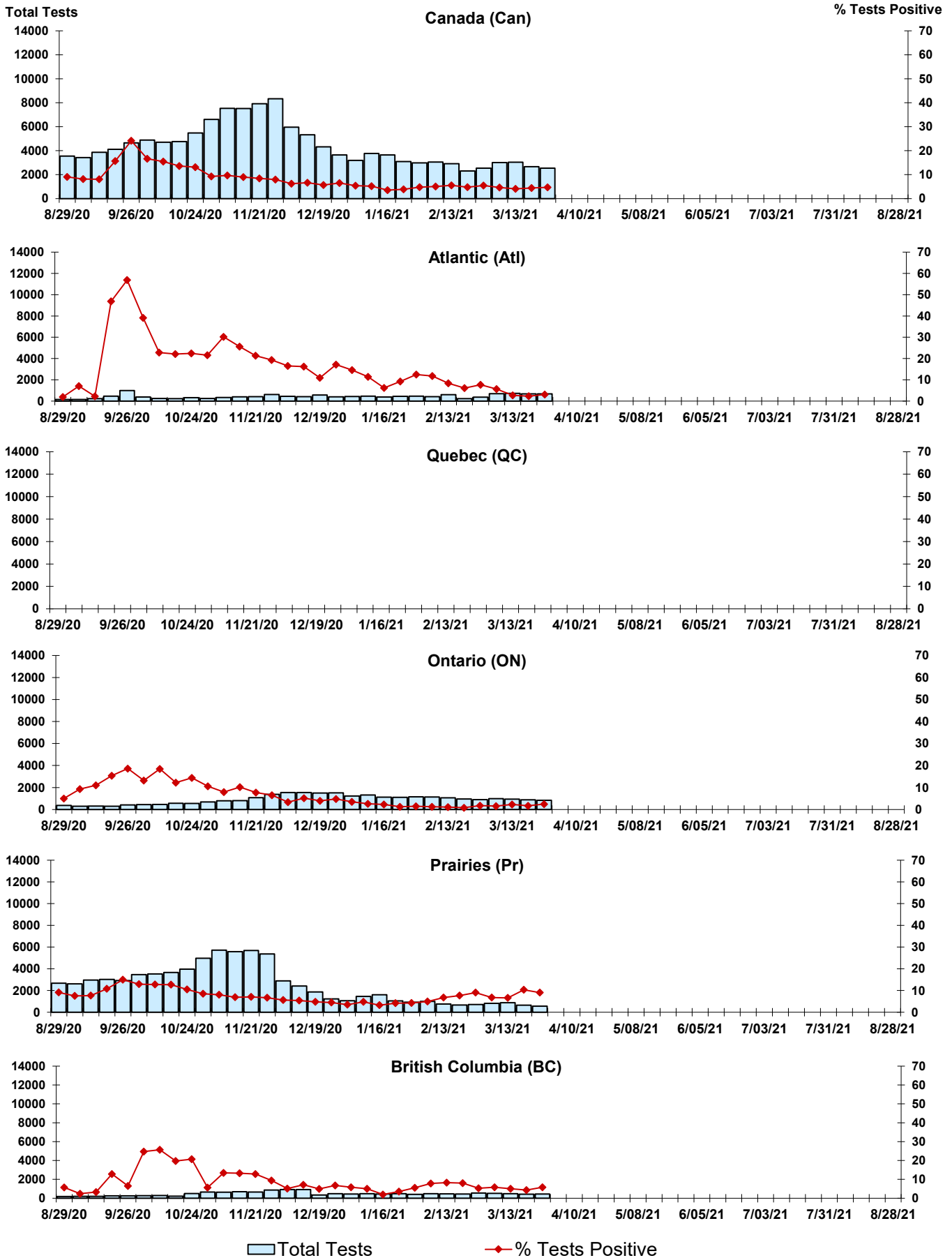
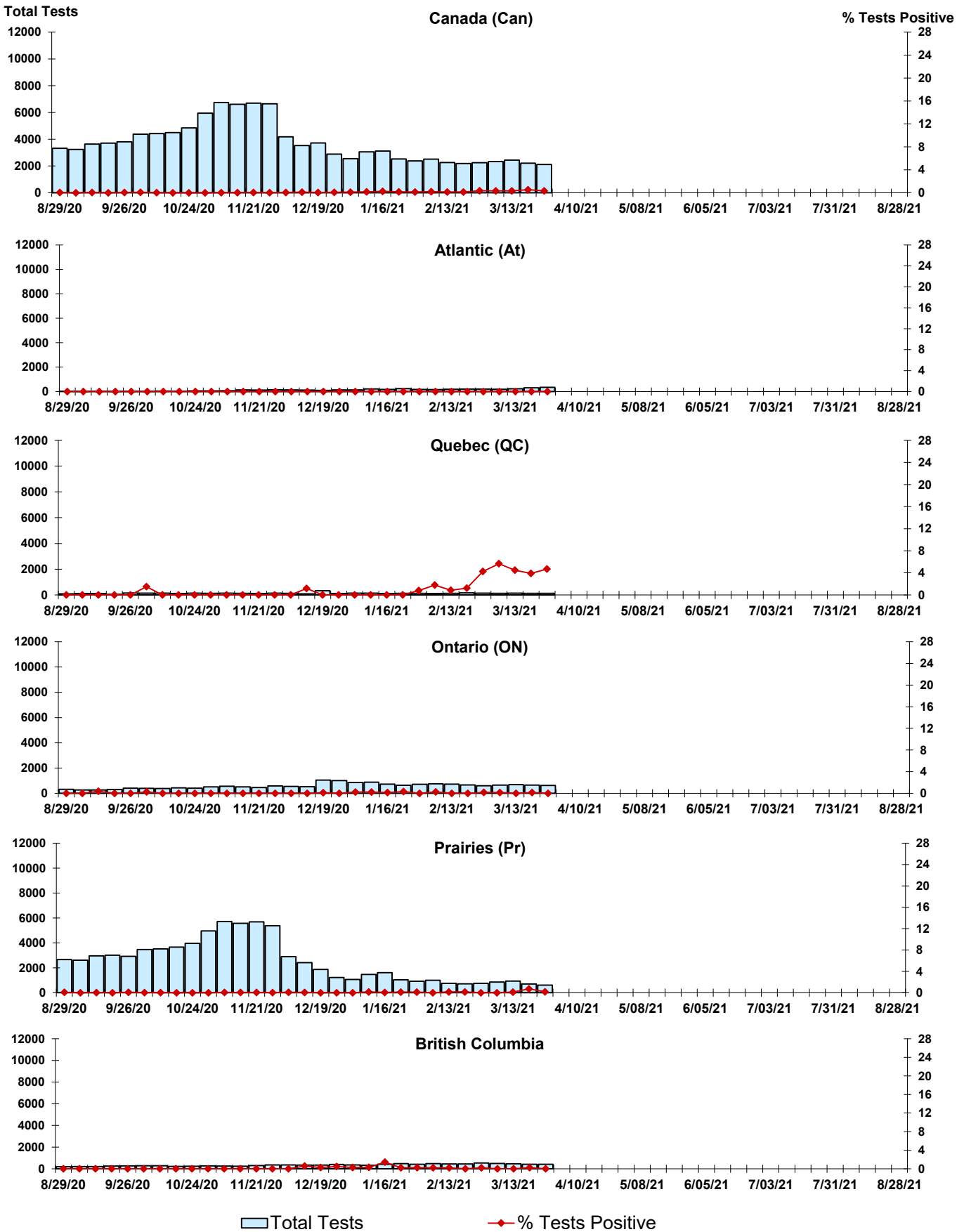


Figure 8: Positive Coronavirus (coron) Tests (%) in Canada by Region by Week of Report



## Abbreviations:

A(H1N1)pdm09: Influenza A(H1N1)pdm09

A(H3): Influenza A(H3N2)

A (UnS): Influenza A (Unsubtyped)

Adeno: Adenovirus

CHEO: Children's Hospital of Eastern Ontario

Coron: Coronavirus

Entero: Enterovirus

hMPV: human metapneumovirus

HSC: Health Sciences Centre

N.A.: Not Applicable

P.H.L.: Public Health Laboratory

P.H.O.L.: Public Health Ontario Laboratory

PIV: Parainfluenza

Rhino: Rhinovirus

RSV: Respiratory syncytial virus

UHN: University Health Network

## Notes:

The data in the RVDSS report represent surveillance data available at the time of writing. Missing data are denoted by N.A.

Specimens from Yukon (YT), Northwest Territories (NT) and Nunavut (NU) are sent to reference laboratories in other provinces. Results reported for the Territories reflect the number of specimens that are identified as originating from YT, NT or NU.

Delays in the reporting of data may cause data to change retrospectively.

Due to reporting delays, the sum of weekly report totals do not add up to cumulative totals.