

Respiratory Virus Report, Week 13 - ending April 3, 2021

The Respiratory Virus Detection Surveillance System collects data from select laboratories across Canada on the number of tests performed and the number of tests positive for influenza and other respiratory viruses. Data are reported on a weekly basis year-round to the Centre for Immunization and Respiratory Infectious Diseases (CIRID), Public Health Agency of Canada. These data are also summarized in the weekly FluWatch report.

In this Respiratory Virus Report, the number of detections of coronavirus reflects only seasonal human coronaviruses, not the novel pandemic coronavirus (SARS-CoV2) that causes COVID-19. For information on COVID-19, see the [Coronavirus disease \(COVID-19\): Outbreak](#)

Table 1: Respiratory Virus Detections/Isolations for the week ending April 3, 2021 (Reporting Week 202113)

Reporting Laboratory	Flu Tested	A(H1N1)pdm09 Positive	A(H3) Positive	A(UnS) Positive	Total Flu A Positive	Total Flu B Positive	RSV Tested	RSV Positive	PIV Tested	PIV 1 Positive	PIV 2 Positive	PIV 3 Positive	PIV 4 Positive	Other PIV Positive	Adeno Tested	Adeno Positive	hMPV Tested	hMPV Positive	Entero/Rhino Tested	Entero/Rhino Positive	Coron Tested	Coron Positive
Newfoundland	267	0	0	0	0	0	267	0	267	0	0	0	0	0	267	1	267	0	267	7	N.A.	N.A.
Prince Edward Island	164	0	0	0	0	0	164	0	164	0	0	0	0	0	164	0	164	0	164	24	164	0
Nova Scotia	402	0	0	0	0	0	402	0	31	0	0	0	0	0	31	0	31	0	31	0	31	0
New Brunswick	515	0	0	0	0	0	279	0	92	0	0	0	0	0	92	1	92	0	92	2	92	0
Atlantic	1348	0	0	0	0	0	1112	0	554	0	0	0	0	0	554	2	554	0	554	33	287	0
Région Nord-Est	291	0	0	0	0	0	18	0	0	0	0	0	0	0	0	0	0	0	N.A.	N.A.	0	0
Québec-Chaudière-Appalaches	5	0	0	0	0	0	13	0	7	0	0	0	0	0	7	0	7	0	N.A.	N.A.	7	0
Centre-du-Québec	17	0	0	0	0	0	17	0	9	0	0	0	0	0	9	0	9	0	N.A.	N.A.	9	0
Montréal-Laval	320	0	0	0	0	0	320	7	122	0	0	0	0	0	122	1	122	0	N.A.	N.A.	122	8
Ouest du Québec	37	0	0	0	0	0	37	0	0	0	0	0	0	0	0	0	0	0	N.A.	N.A.	0	0
Montérégie	76	0	0	0	0	0	76	0	0	0	0	0	0	0	0	0	0	0	N.A.	N.A.	0	0
Province of Québec	746	0	0	0	0	0	481	7	138	0	0	0	0	0	138	1	138	0	N.A.	N.A.	138	8
P.H.O.L. - Ottawa	9	0	0	0	0	0	9	0	7	0	0	0	0	0	7	0	7	0	7	0	7	0
CHEO - Ottawa	117	0	0	0	0	0	117	0	16	0	0	0	0	0	16	0	16	0	16	4	16	0
P.H.O.L. - Kingston	15	0	0	0	0	0	15	0	4	0	0	0	0	0	4	0	4	0	4	0	4	0
UHN / Mount Sinai Hospital	503	0	0	0	0	0	503	0	465	0	0	0	0	0	465	0	465	0	465	0	465	0
P.H.O.L. - Toronto	123	0	0	0	0	0	123	0	92	0	0	0	0	0	92	0	92	0	92	0	92	0
Sick Kids Hospital - Toronto	N.A.	N.A.	N.A.	N.A.	N.A.	N.A.	N.A.	N.A.	N.A.	N.A.	N.A.	N.A.	N.A.	N.A.	N.A.	N.A.	N.A.	N.A.	N.A.	N.A.	N.A.	N.A.
Sunnybrook & Women's College HSC	N.A.	N.A.	N.A.	N.A.	N.A.	N.A.	N.A.	N.A.	N.A.	N.A.	N.A.	N.A.	N.A.	N.A.	N.A.	N.A.	N.A.	N.A.	N.A.	N.A.	N.A.	N.A.
P.H.O.L. - Sault Ste. Marie	2	0	0	0	0	0	2	0	0	0	0	0	0	0	0	0	0	0	0	0	0	0
P.H.O.L. - Timmins	4	0	0	0	0	0	4	0	4	0	0	0	0	0	4	0	4	0	4	1	4	0
St. Joseph's - London	N.A.	N.A.	N.A.	N.A.	N.A.	N.A.	N.A.	N.A.	N.A.	N.A.	N.A.	N.A.	N.A.	N.A.	N.A.	N.A.	N.A.	N.A.	N.A.	N.A.	N.A.	N.A.
P.H.O.L. - London	29	0	0	0	0	0	29	0	7	0	0	0	0	0	7	0	7	0	7	0	7	0
P.H.O.L. - Orillia	8	0	0	0	0	0	8	0	0	0	0	0	0	0	0	0	0	0	0	0	0	0
P.H.O.L. - Thunder Bay	3	0	0	0	0	0	3	0	2	0	0	0	0	0	2	1	2	0	2	1	2	0
P.H.O.L. - Sudbury	12	0	0	0	0	0	12	0	3	0	0	0	0	0	3	0	3	0	3	0	3	0
P.H.O.L. - Hamilton	10	0	0	0	0	0	10	0	7	0	0	0	0	0	7	0	7	0	7	0	7	0
P.H.O.L. - Peterborough	18	0	0	0	0	0	18	0	13	0	0	0	0	0	13	0	12	0	13	4	12	0
St. Joseph's - Hamilton	219	0	0	0	0	0	219	0	219	0	0	0	0	0	219	1	219	0	219	4	0	0
Province of Ontario	1072	0	0	0	0	0	1072	0	839	0	0	0	0	0	839	2	838	0	839	14	619	0
Province of Manitoba	1276	0	0	0	0	0	1276	0	11	0	0	0	0	0	11	0	59	0	11	2	59	0
Province of Saskatchewan	15598	0	0	0	0	0	2704	0	18	0	0	0	0	0	18	0	18	0	18	0	18	1
Province of Alberta	2111	0	0	0	0	0	522	0	522	0	0	0	0	0	522	2	522	0	522	52	522	0
Prairies	18985	0	0	0	0	0	4502	0	551	0	0	0	0	0	551	2	599	0	551	54	599	1
British Columbia	1808	0	0	0	0	0	1788	0	215	0	0	0	0	0	215	1	215	1	212	6	212	0
Yukon	18	0	0	0	0	0	18	0	N.A.	N.A.	N.A.	N.A.	N.A.	N.A.	N.A.	N.A.	N.A.	N.A.	N.A.	N.A.	N.A.	N.A.
Northwest Territories	5	0	0	0	0	0	5	0	5	0	0	0	0	0	5	0	5	0	5	1	5	0
Nunavut	1	0	0	0	0	0	0	0	0	0	0	0	0	0	0	0	0	0	0	0	0	0
Territories	24	0	0	0	0	0	23	0	5	0	0	0	0	0	5	0	5	0	5	1	5	0
CANADA	23983	0	0	0	0	0	8978	7	2302	0	0	0	0	0	2302	8	2349	1	2161	108	1860	9

The data in the RVDSS report represent surveillance data available at the time of writing. Missing data are denoted by N.A.

Specimens from Yukon (YT), Northwest Territories (NT) and Nunavut (NU) are sent to reference laboratories in other provinces and reported results reflect specimens identified as originating from YT, NT or NU.

Results from British Columbia comprise of specimens from the following sites: BC Children's and Women's Hospital, Fraser Health Medical Microbiology Laboratory, Island Health, Providence Health Care, Powell River Hospital, St. Paul's Hospital, Vancouver General Hospital, Victoria General Hospital, BCCDC Public Health Laboratory, Interior Health Authority sites and Northern Health Authority sites.

Delays in the reporting of data may cause data to change retrospectively.

Influenza co-detections may cause the sum of A(H1N1)pdm09, A(H3), and A(UnS) positive results to exceed the sum of Total Flu A Positive results.

Table 2: Respiratory Virus Detections/Isolations for the period August 23, 2020 - April 3, 2021 (Reporting Weeks 202035-202113)

Reporting Laboratory	Flu Tested	A(H1N1)pdm09 Positive	A(H3) Positive	A(UnS) Positive	Total Flu A Positive	Total Flu B Positive	RSV Tested	RSV Positive	PIV Tested	PIV 1 Positive	PIV 2 Positive	PIV 3 Positive	PIV 4 Positive	Other PIV Positive	Adeno Tested	Adeno Positive	hMPV Tested	hMPV Positive	Entero/Rhino Tested	Entero/Rhino Positive	Coron Tested	Coron Positive
Newfoundland	9849	0	0	0	0	0	9849	10	9849	1	0	1	0	0	9861	45	9262	2	9849	1963	N.A.	N.A.
Prince Edward Island	2908	0	0	0	0	0	2908	3	2904	2	0	0	0	0	2904	29	2904	0	2904	311	2904	0
Nova Scotia	4152	0	0	0	0	0	4155	0	526	0	0	0	0	0	526	7	526	0	526	63	526	0
New Brunswick	50871	0	0	0	0	1	18076	0	926	0	0	0	0	0	917	9	917	0	917	50	872	0
Atlantic	67780	0	0	0	0	1	34988	13	14205	3	0	1	0	0	14208	90	13609	2	14196	2387	4302	0
Région Nord-Est	3505	0	0	0	0	0	893	1	0	0	0	0	0	0	0	0	0	0	N.A.	N.A.	0	0
Québec-Chaudière-Appalaches	680	0	0	1	1	0	760	0	465	0	0	0	0	0	467	25	462	0	N.A.	N.A.	445	7
Centre-du-Québec	776	0	0	0	0	0	785	1	256	0	0	0	0	0	254	17	256	0	N.A.	N.A.	253	1
Montréal-Laval	6403	0	0	0	0	0	5446	22	3396	0	0	1	0	0	3450	118	3380	2	N.A.	N.A.	3380	39
Ouest du Québec	1440	0	0	0	0	0	1384	0	0	0	0	0	0	0	0	0	0	0	N.A.	N.A.	0	0
Montérégie	506	0	0	0	0	0	506	0	0	0	0	0	0	0	0	0	0	0	N.A.	N.A.	0	0
Province of Québec	13310	0	0	1	1	0	9774	24	4117	0	0	1	0	0	4171	160	4098	2	N.A.	N.A.	4078	47
P.H.O.L. - Ottawa	466	0	0	0	0	0	466	1	394	0	0	0	0	0	394	0	393	0	394	22	393	1
CHEO - Ottawa	4374	0	0	1	1	1	3971	5	657	0	0	0	0	0	657	12	657	1	657	76	657	0
P.H.O.L. - Kingston	768	0	0	1	1	0	768	0	504	0	0	0	0	0	504	4	498	0	504	106	498	0
UHN / Mount Sinai Hospital	10575	2	0	2	4	1	10506	6	9974	3	2	3	8	0	8348	9	9934	8	9731	96	7770	6
P.H.O.L. - Toronto	5236	0	0	0	0	0	5233	2	4553	0	0	0	0	3	4554	12	4552	0	4553	144	4552	4
Sick Kids Hospital - Toronto	1035	0	0	0	0	0	0	0	1035	0	0	0	0	0	1035	16	1035	0	1035	97	1035	1
Sunnybrook & Women's College HSC	0	0	0	0	0	0	0	0	0	0	0	0	0	0	0	0	0	0	0	0	0	0
P.H.O.L. - Sault Ste. Marie	145	0	0	2	2	0	143	0	89	0	0	0	0	0	89	0	89	0	89	6	89	0
P.H.O.L. - Timmins	605	0	0	0	0	0	605	0	159	0	0	0	0	0	159	0	158	0	159	31	158	0
St. Joseph's - London	218	0	0	0	0	0	218	0	55	0	0	0	0	0	55	0	55	0	91	8	36	0
P.H.O.L. - London	1769	1	0	5	6	2	1759	0	1236	0	0	0	0	2	1236	2	1231	0	1236	125	1231	3
P.H.O.L. - Orillia	366	0	0	1	1	0	364	0	189	0	0	0	0	0	189	1	189	0	189	12	189	0
P.H.O.L. - Thunder Bay	385	0	0	0	0	0	385	0	372	0	0	0	0	0	373	3	372	0	372	137	372	0
P.H.O.L. - Sudbury	447	0	0	0	0	0	445	0	323	0	0	0	0	0	323	2	323	0	323	28	323	0
P.H.O.L. - Hamilton	1411	0	0	0	0	0	1360	1	1143	0	0	0	0	0	1143	2	1143	0	1143	98	1143	0
P.H.O.L. - Peterborough	449	0	0	1	1	0	403	0	306	0	0	0	0	0	306	0	305	0	306	24	305	0
St. Joseph's - Hamilton	8304	0	0	0	0	0	8304	2	8304	0	0	1	0	0	8304	19	8304	0	8304	422	0	0
Province of Ontario	36553	3	0	13	16	4	34930	17	29293	3	2	4	8	5	27669	82	29238	9	29086	1432	18751	15
Manitoba	41196	0	0	0	0	1	41186	68	2682	0	1	1	0	0	2682	17	2662	1	2682	140	2666	3
Province of Saskatchewan	103972	0	0	0	0	0	15822	4	1610	0	0	1	1	0	1610	10	1610	4	1610	161	1610	8
Province of Alberta	109351	4	0	6	10	0	72968	0	72968	2	18	3	5	0	72968	133	72968	11	72968	6110	72968	22
Prairies	254519	4	0	6	10	1	129976	72	77260	2	19	5	6	0	77260	160	77444	16	77260	6411	77444	33
British Columbia	71272	3	8	1	10	8	70894	5	14793	1	4	0	10	5	15337	79	15187	58	15002	1267	10999	19
Yukon	4524	0	0	8	8	7	4462	4	N.A.	N.A.	N.A.	N.A.	N.A.	N.A.	N.A.	N.A.	N.A.	N.A.	N.A.	N.A.	N.A.	N.A.
Northwest Territories	1116	0	0	0	0	0	1082	0	1082	0	0	0	1	0	1082	9	1082	1	1082	317	1082	1
Nunavut	1107	0	0	0	0	0	1091	0	1091	3	1	0	0	0	1091	25	1091	5	1091	280	184	0
Territories	6747	0	0	8	8	7	6635	4	2173	3	1	0	1	0	2173	34	2173	6	2173	597	1266	1
CANADA	450181	10	8	29	45	21	287197	135	141841	12	26	11	25	10	140818	605	141749	93	137717	12094	116840	115

The data in the RVDSS report represent surveillance data available at the time of writing. Missing data are denoted by N.A.

Specimens from YT, NT and NU are sent to reference laboratories in other provinces and reported results reflect specimens identified as originating from YT, NT or NU.

Results from British Columbia comprise of specimens from the following sites: BC Children's and Women's Hospital, Children's and Women's Hospital Laboratory, Fraser Health Medical Microbiology Laboratory, Island Health, Providence Health Care, Powell River Hospital, St. Paul's Hospital, Vancouver General Hospital, Victoria General Hospital, BCCDC Public Health Laboratory, Interior Health Authority sites and Northern Health Authority sites.

Delays in the reporting of data may cause data to change retrospectively.

Due to reporting delays, the sum of weekly report totals do not add up to cumulative totals.

Influenza co-detections may cause the sum of A(H1N1)pdm09, A(H3), and A(UnS) positive results to exceed the sum of Total Flu A Positive results.

Figure 1: Number positive laboratory tests for other respiratory viruses by report week, Canada, 2020-21

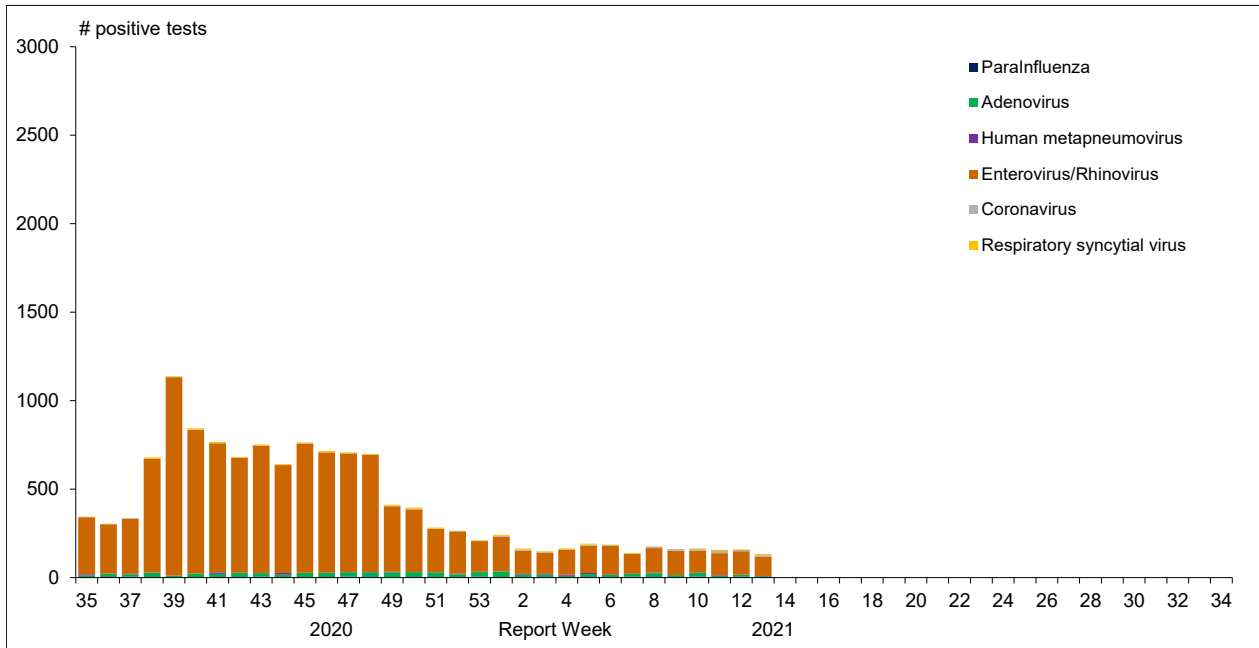


Figure 2 : Positive Influenza Tests (%) in Canada by Region by Week of Report

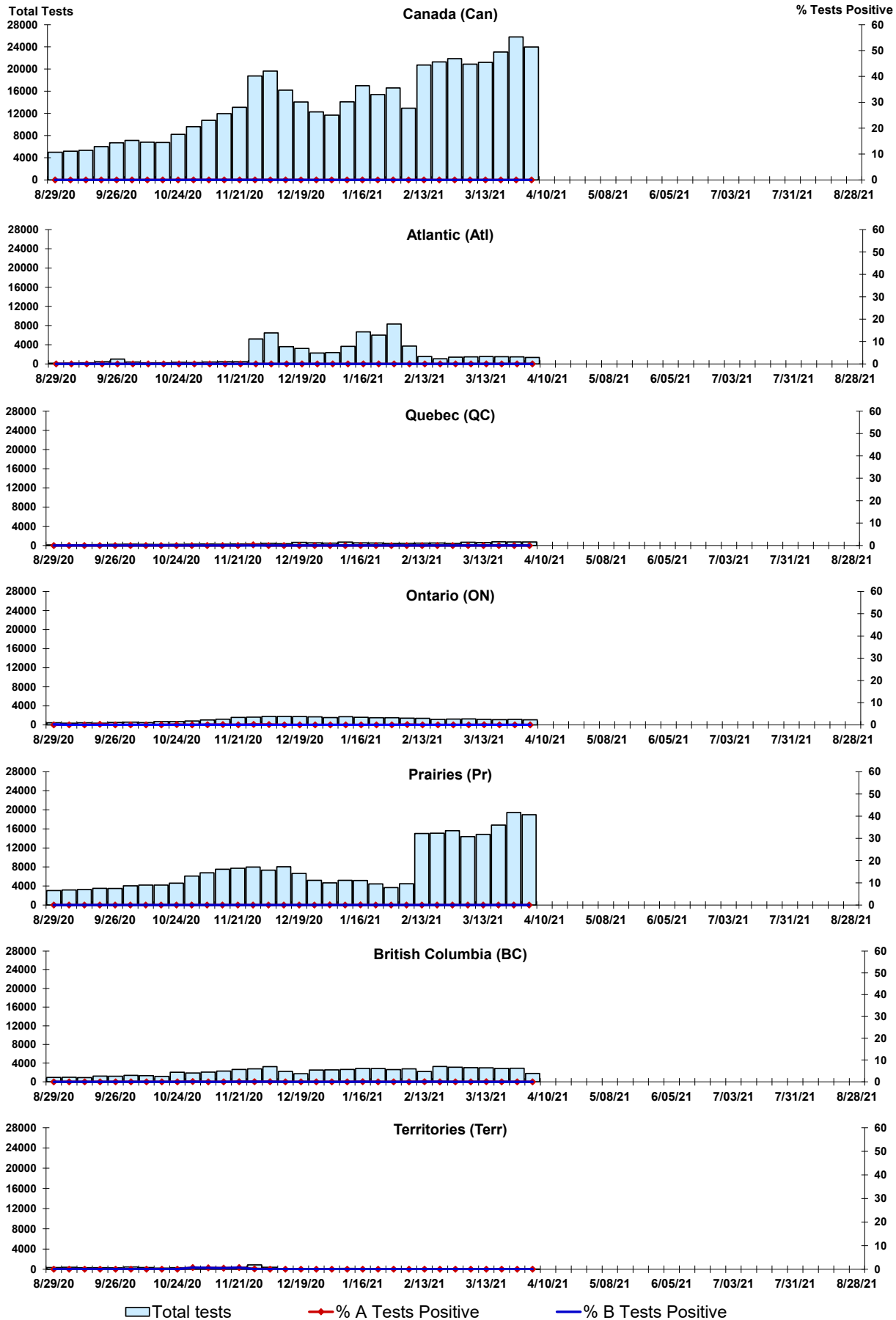


Figure 3: Positive Respiratory syncytial virus (RSV) Tests (%) in Canada by Region by Week of Report

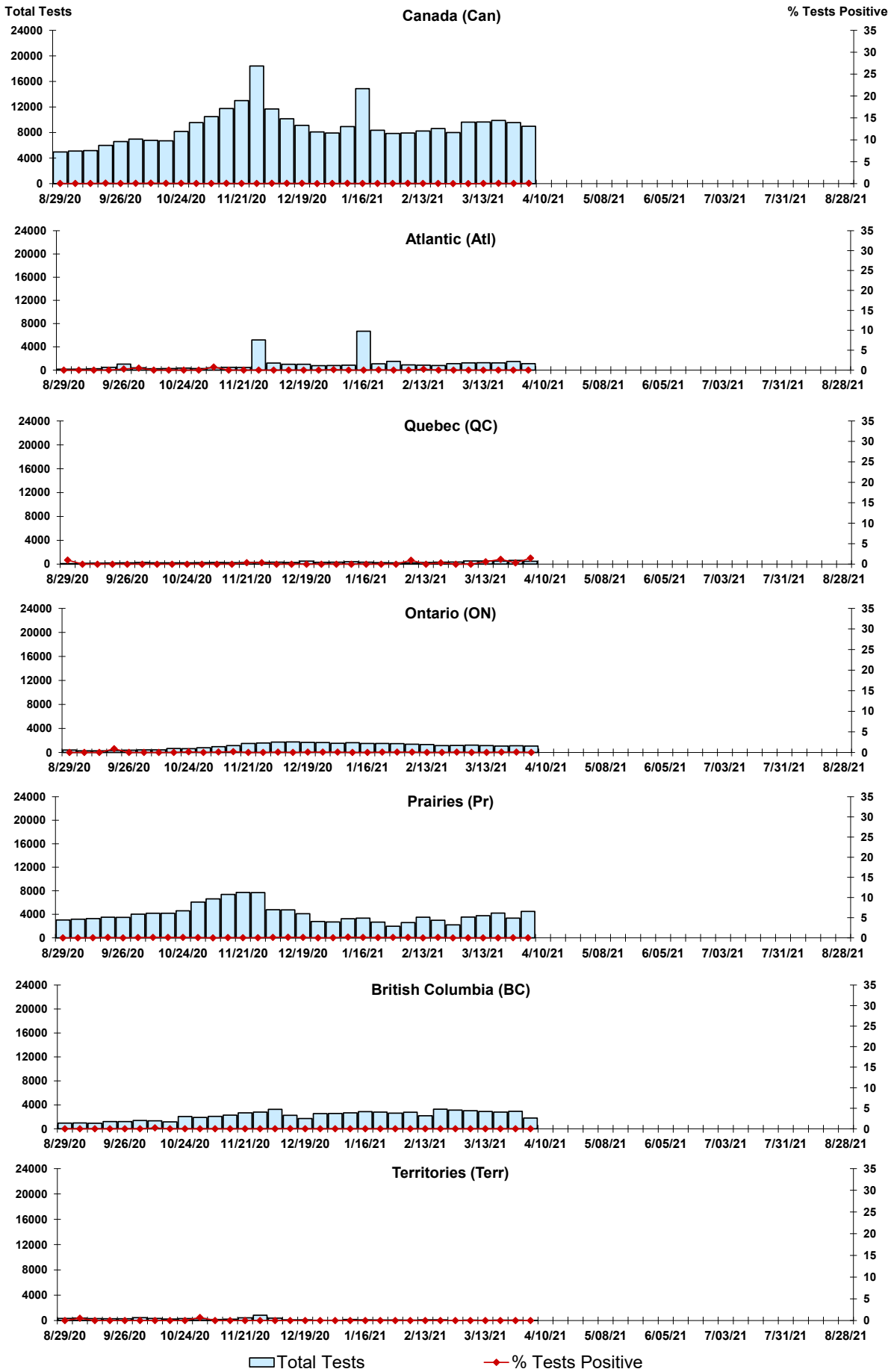
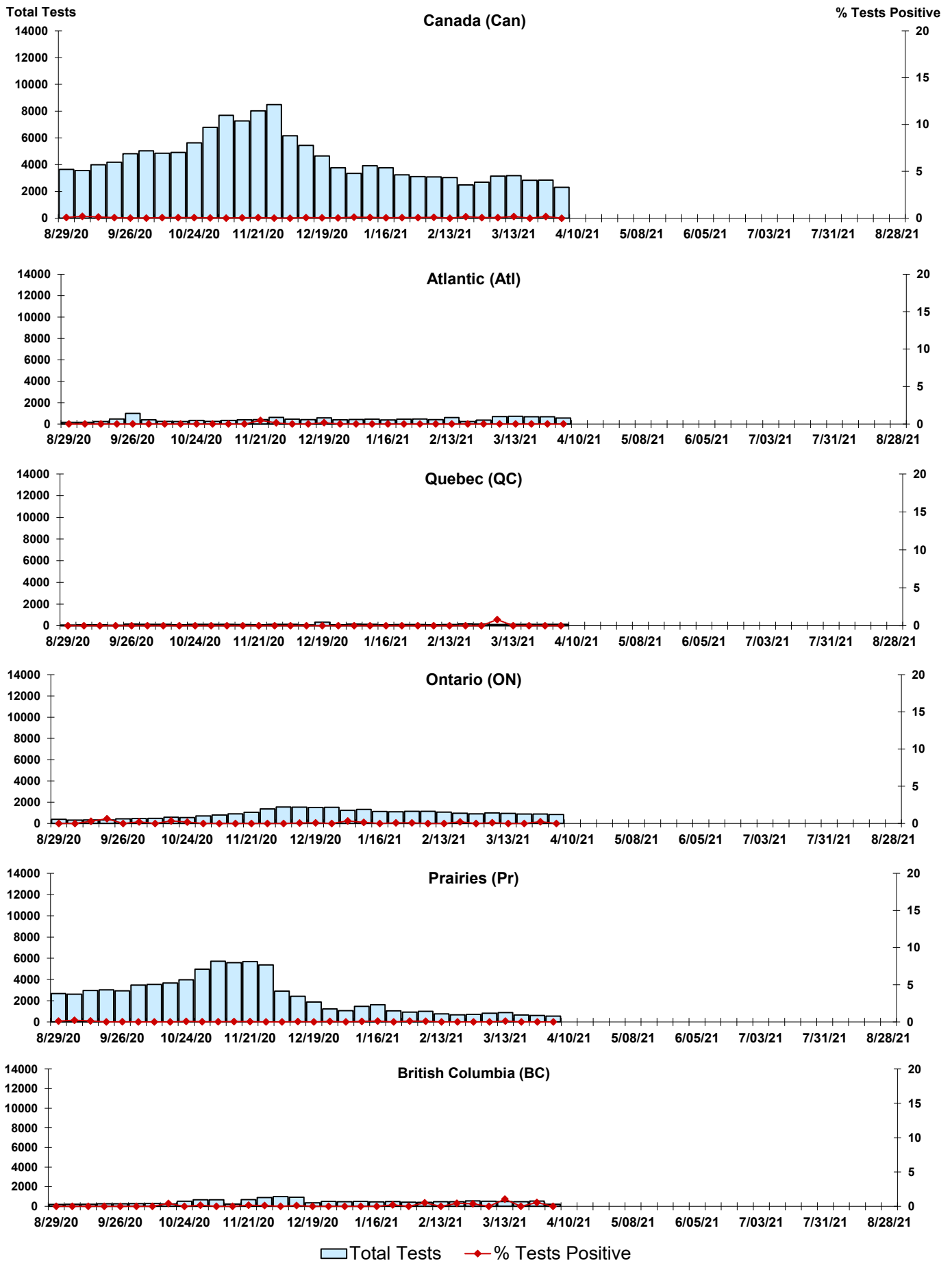


Figure 4: Positive Parainfluenza (PIV) Tests (%) in Canada by Region by Week of Report



Legend: Total Tests (light blue bar), % Tests Positive (red diamond)

Figure 5: Positive Adenovirus (adeno) Tests (%) in Canada by Region by Week of Report

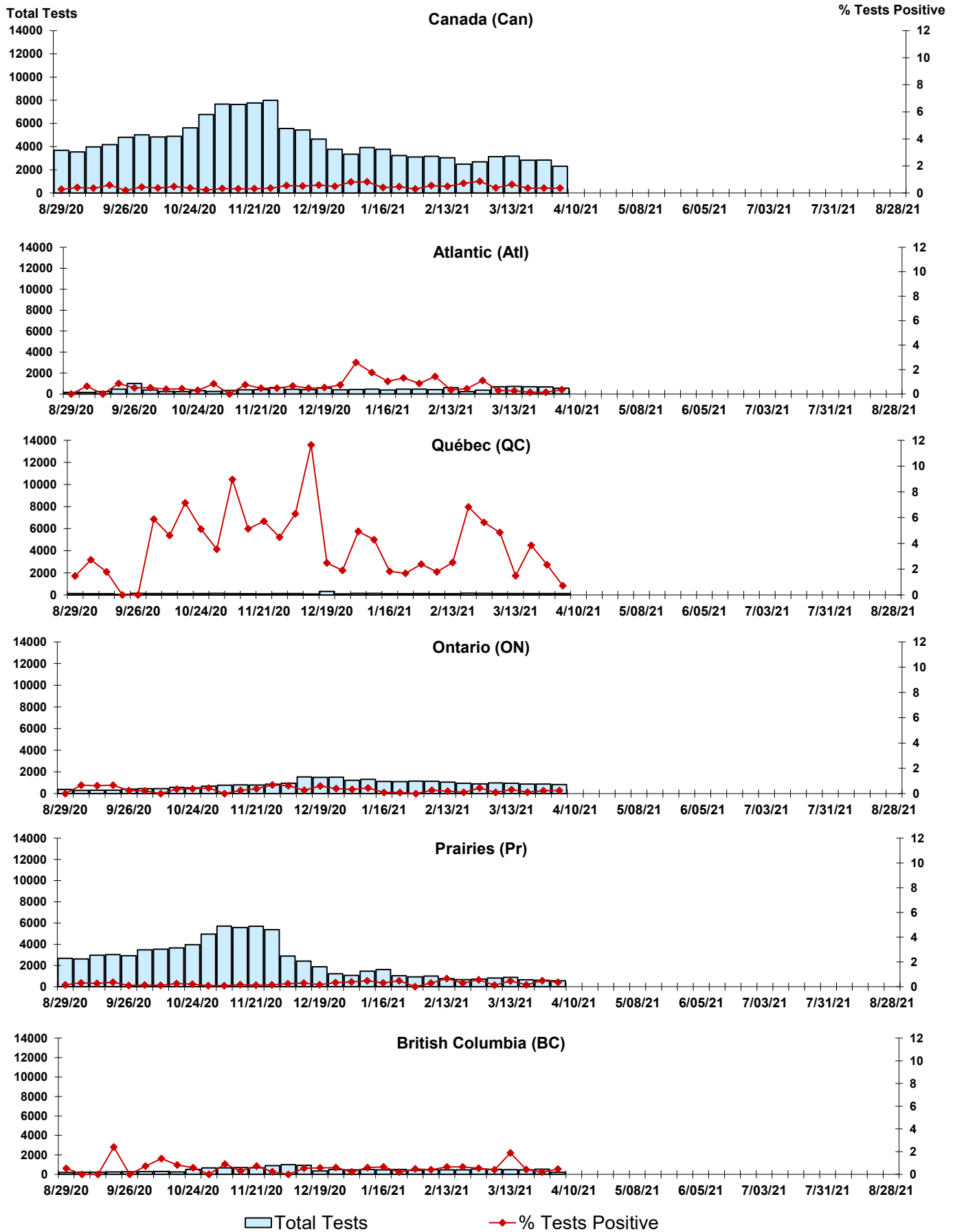


Figure 6: Positive human metapneumovirus (hMPV) Tests (%) in Canada by Region by Week of Report

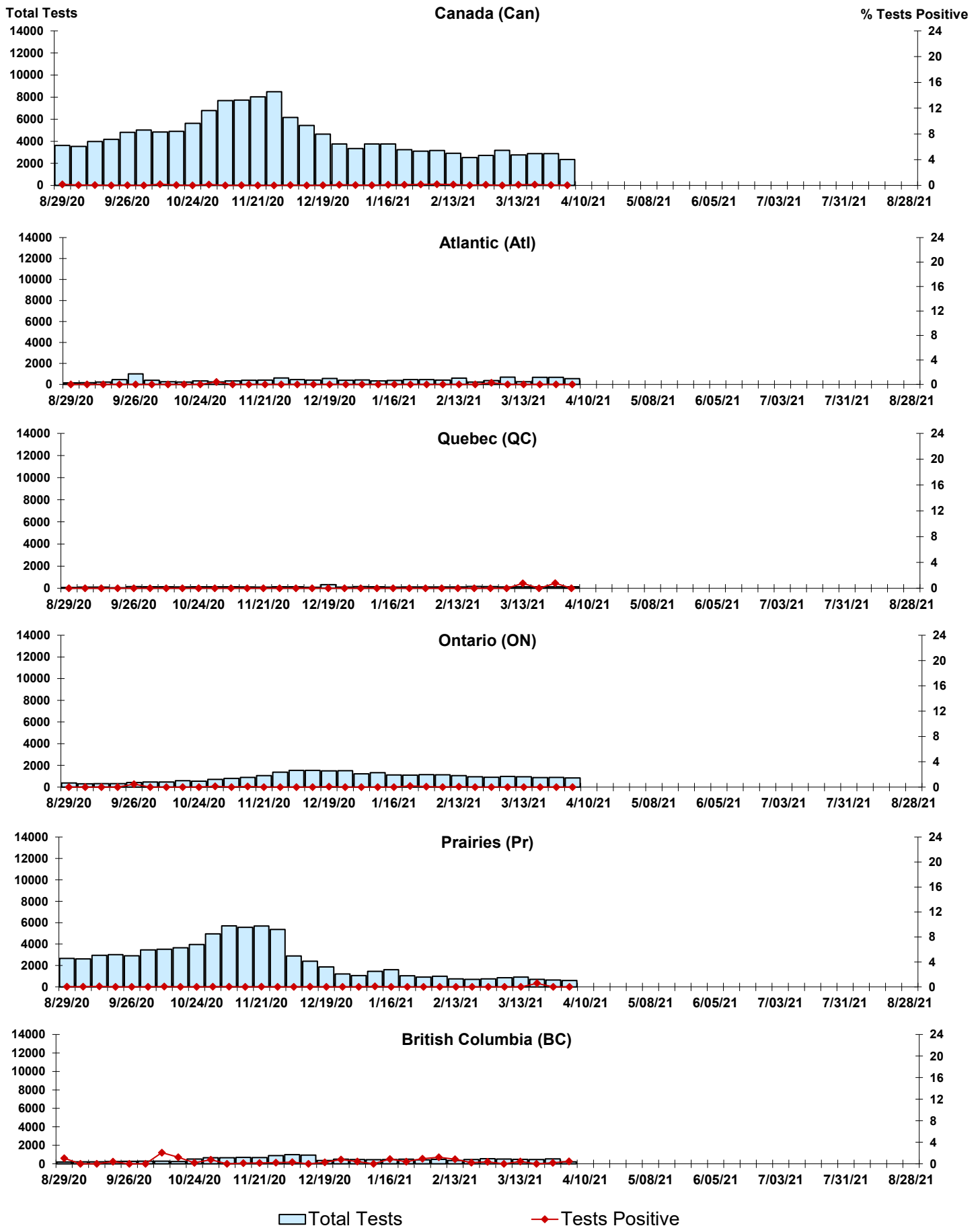


Figure 7: Positive Enterovirus/Rhinovirus (entero/rhino) Tests (%) in Canada by Region by Week of Report

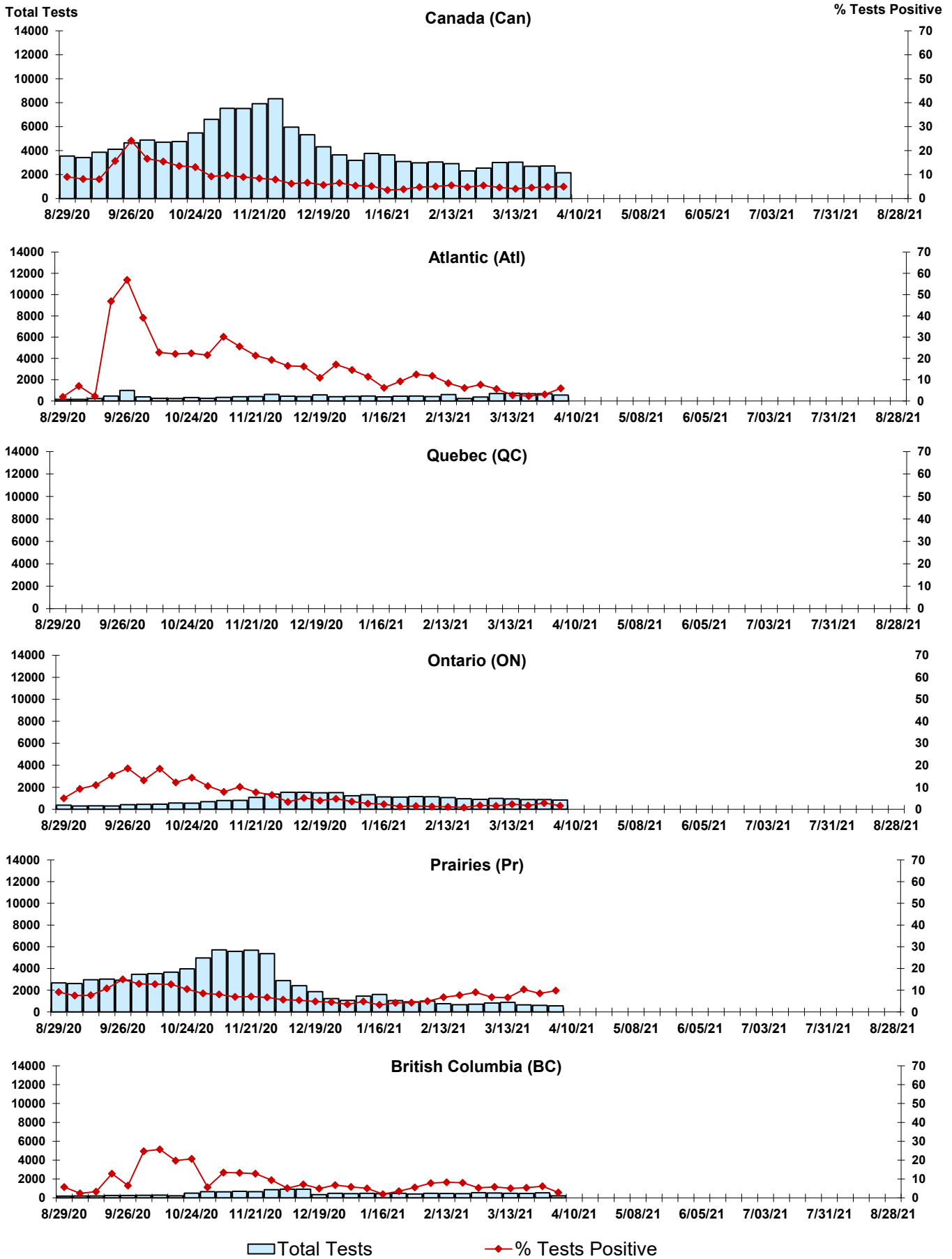
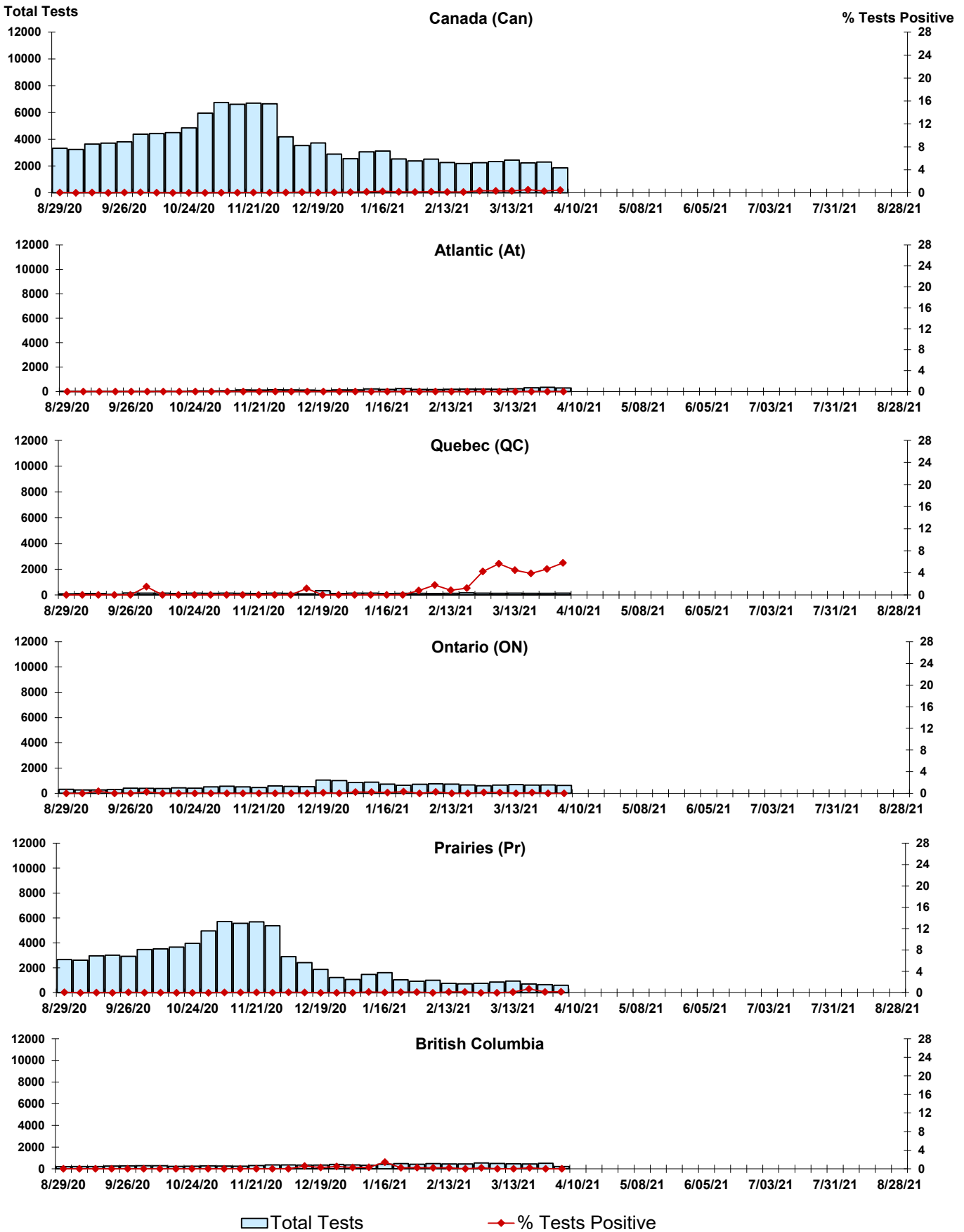


Figure 8: Positive Coronavirus (coron) Tests (%) in Canada by Region by Week of Report



Abbreviations:

A(H1N1)pdm09: Influenza A(H1N1)pdm09

A(H3): Influenza A(H3N2)

A (UnS): Influenza A (Unsubtyped)

Adeno: Adenovirus

CHEO: Children's Hospital of Eastern Ontario

Coron: Coronavirus

Enterovirus: Enterovirus

hMPV: human metapneumovirus

HSC: Health Sciences Centre

N.A.: Not Applicable

P.H.L.: Public Health Laboratory

P.H.O.L.: Public Health Ontario Laboratory

PIV: Parainfluenza

Rhino: Rhinovirus

RSV: Respiratory syncytial virus

UHN: University Health Network

Notes:

The data in the RVDSS report represent surveillance data available at the time of writing. Missing data are denoted by N.A.

Specimens from Yukon (YT), Northwest Territories (NT) and Nunavut (NU) are sent to reference laboratories in other provinces. Results reported for the Territories reflect the number of specimens that are identified as originating from YT, NT or NU.

Delays in the reporting of data may cause data to change retrospectively.

Due to reporting delays, the sum of weekly report totals do not add up to cumulative totals.