

Respiratory Virus Report, Week 14 - ending April 10, 2021

The Respiratory Virus Detection Surveillance System collects data from select laboratories across Canada on the number of tests performed and the number of tests positive for influenza and other respiratory viruses. Data are reported on a weekly basis year-round to the Centre for Immunization and Respiratory Infectious Diseases (CIRID), Public Health Agency of Canada. These data are also summarized in the weekly FluWatch report.

In this Respiratory Virus Report, the number of detections of coronavirus reflects only seasonal human coronaviruses, not the novel pandemic coronavirus (SARS-CoV2) that causes COVID-19. For information on COVID-19, see the [Coronavirus disease \(COVID-19\): Outbreak](#)

Table 1: Respiratory Virus Detections/Isolations for the week ending April 10, 2021 (Reporting Week 202114)

Reporting Laboratory	Flu Tested	A(H1N1)pdm09 Positive	A(H3) Positive	A(UnS) Positive	Total Flu A Positive	Total Flu B Positive	RSV Tested	RSV Positive	PIV Tested	PIV 1 Positive	PIV 2 Positive	PIV 3 Positive	PIV 4 Positive	Other PIV Positive	Adeno Tested	Adeno Positive	hMPV Tested	hMPV Positive	Entero/Rhino Tested	Entero/Rhino Positive	Coron Tested	Coron Positive
Newfoundland	320	0	0	0	0	0	320	0	320	0	0	0	0	0	320	1	320	0	320	10	N.A.	N.A.
Prince Edward Island	171	0	0	0	0	0	171	0	171	0	0	0	0	0	171	1	171	0	171	30	171	0
Nova Scotia	365	0	0	0	0	0	365	0	6	0	0	0	0	0	6	0	6	0	6	1	33	0
New Brunswick	544	0	0	0	0	0	259	0	14	0	0	0	0	0	14	0	14	0	14	0	14	0
Atlantic	1400	0	0	0	0	0	1115	0	511	0	0	0	0	0	511	2	511	0	511	41	218	0
Région Nord-Est	328	0	0	0	0	0	20	0	0	0	0	0	0	0	0	0	0	0	N.A.	N.A.	0	0
Québec-Chaudière-Appalaches	9	0	0	0	0	0	9	0	23	0	0	0	0	0	23	4	23	0	N.A.	N.A.	23	7
Centre-du-Québec	29	0	0	0	0	0	29	0	16	0	0	1	0	0	16	0	16	0	N.A.	N.A.	16	0
Montréal-Laval	379	0	0	0	0	0	379	10	130	0	0	1	0	0	130	6	130	0	N.A.	N.A.	130	12
Ouest du Québec	125	0	0	0	0	0	125	0	0	0	0	0	0	0	0	0	0	0	N.A.	N.A.	0	0
Montérégie	91	0	0	0	0	0	91	0	0	0	0	0	0	0	0	0	0	0	N.A.	N.A.	0	0
Province of Québec	961	0	0	0	0	0	653	10	169	0	0	2	0	0	169	10	169	0	N.A.	N.A.	169	19
P.H.O.L. - Ottawa	11	0	0	0	0	0	11	0	10	0	0	0	0	0	10	0	10	0	10	0	10	0
CHEO - Ottawa	103	0	0	0	0	0	103	0	10	0	0	0	0	0	10	0	10	0	10	1	10	0
P.H.O.L. - Kingston	13	0	0	0	0	0	13	0	8	0	0	0	0	0	8	0	8	0	8	0	8	0
UHN / Mount Sinai Hospital	N.A.	N.A.	N.A.	N.A.	N.A.	N.A.	N.A.	N.A.	N.A.	N.A.	N.A.	N.A.	N.A.	N.A.	N.A.	N.A.	N.A.	N.A.	N.A.	N.A.	N.A.	N.A.
P.H.O.L. - Toronto	148	0	0	0	0	0	148	0	108	0	0	0	0	0	108	0	108	1	108	1	108	1
Sick Kids Hospital - Toronto	N.A.	N.A.	N.A.	N.A.	N.A.	N.A.	N.A.	N.A.	N.A.	N.A.	N.A.	N.A.	N.A.	N.A.	N.A.	N.A.	N.A.	N.A.	N.A.	N.A.	N.A.	N.A.
Sunnybrook & Women's College HSC	N.A.	N.A.	N.A.	N.A.	N.A.	N.A.	N.A.	N.A.	N.A.	N.A.	N.A.	N.A.	N.A.	N.A.	N.A.	N.A.	N.A.	N.A.	N.A.	N.A.	N.A.	N.A.
P.H.O.L. - Sault Ste. Marie	2	0	0	0	0	0	2	0	1	0	0	0	0	0	1	0	1	0	1	0	1	0
P.H.O.L. - Timmins	3	0	0	0	0	0	3	0	0	0	0	0	0	0	0	0	0	0	0	0	0	0
St. Joseph's - London	N.A.	N.A.	N.A.	N.A.	N.A.	N.A.	N.A.	N.A.	N.A.	N.A.	N.A.	N.A.	N.A.	N.A.	N.A.	N.A.	N.A.	N.A.	N.A.	N.A.	N.A.	N.A.
P.H.O.L. - London	23	0	0	0	0	0	23	0	3	0	0	0	0	0	3	0	3	0	3	1	3	0
P.H.O.L. - Orillia	8	0	0	0	0	0	8	0	1	0	0	0	0	0	1	0	1	0	1	0	1	0
P.H.O.L. - Thunder Bay	11	0	0	0	0	0	11	0	10	0	0	0	0	0	10	0	10	0	10	0	10	0
P.H.O.L. - Sudbury	2	0	0	0	0	0	2	0	2	0	0	0	0	0	2	0	2	0	2	0	2	0
P.H.O.L. - Hamilton	10	0	0	0	0	0	10	0	7	0	0	0	0	0	7	0	7	0	7	0	7	0
P.H.O.L. - Peterborough	10	0	0	0	0	0	10	0	10	0	0	0	0	0	10	0	10	0	10	0	10	0
St. Joseph's - Hamilton	238	0	0	0	0	0	238	0	238	0	0	0	0	0	238	0	238	0	238	5	0	0
Province of Ontario	582	0	0	0	0	0	582	0	408	0	0	0	0	0	408	0	408	1	408	8	170	1
Province of Manitoba	1478	0	0	2	2	0	1478	0	5	0	0	0	0	0	5	1	61	0	5	3	61	0
Province of Saskatchewan	15045	0	0	0	0	0	1884	0	23	0	0	0	0	0	23	0	23	0	23	4	23	0
Province of Alberta	2513	0	0	0	0	0	763	0	763	0	0	0	1	0	763	4	763	0	763	90	763	1
Prairies	19036	0	0	2	2	0	4125	0	791	0	0	0	1	0	791	5	847	0	791	97	847	1
British Columbia	2267	0	0	0	0	0	2236	0	367	0	0	0	0	0	363	5	363	0	363	26	354	0
Yukon	15	0	0	0	0	0	15	0	N.A.	N.A.	N.A.	N.A.	N.A.	N.A.	N.A.	N.A.	N.A.	N.A.	N.A.	N.A.	N.A.	N.A.
Northwest Territories	5	0	0	0	0	0	3	0	3	0	0	0	0	0	3	0	3	0	3	0	3	0
Nunavut	4	0	0	0	0	0	3	0	3	0	0	0	0	0	3	0	3	0	3	1	0	0
Territories	24	0	0	0	0	0	21	0	6	0	0	0	0	0	6	0	6	0	6	1	3	0
CANADA	24270	0	0	2	2	0	8732	10	2252	0	0	2	1	0	2248	22	2304	1	2079	173	1761	21

The data in the RVDSS report represent surveillance data available at the time of writing. Missing data are denoted by N.A.

Specimens from Yukon (YT), Northwest Territories (NT) and Nunavut (NU) are sent to reference laboratories in other provinces and reported results reflect specimens identified as originating from YT, NT or NU.

Results from British Columbia comprise of specimens from the following sites: BC Children's and Women's Hospital, Fraser Health Medical Microbiology Laboratory, Island Health, Providence Health Care, Powell River Hospital, St. Paul's Hospital, Vancouver General Hospital, Victoria General Hospital, BCCDC Public Health Laboratory, Interior Health Authority sites and Northern Health Authority sites.

Delays in the reporting of data may cause data to change retrospectively.

Influenza co-detections may cause the sum of A(H1N1)pdm09, A(H3), and A(UnS) positive results to exceed the sum of Total Flu A Positive results.

Table 2: Respiratory Virus Detections/Isolations for the period August 23, 2020 - April 10, 2021 (Reporting Weeks 202035-202114)

Reporting Laboratory	Flu Tested	A(H1N1)pdm09 Positive	A(H3) Positive	A(UnS) Positive	Total Flu A Positive	Total Flu B Positive	RSV Tested	RSV Positive	PIV Tested	PIV 1 Positive	PIV 2 Positive	PIV 3 Positive	PIV 4 Positive	Other PIV Positive	Adeno Tested	Adeno Positive	hMPV Tested	hMPV Positive	Entero/Rhino Tested	Entero/Rhino Positive	Coron Tested	Coron Positive
Newfoundland	10169	0	0	0	0	0	10169	10	10169	1	0	1	0	0	10181	46	9582	2	10169	1973	N.A.	N.A.
Prince Edward Island	3079	0	0	0	0	0	3079	3	3075	2	0	0	0	0	3075	30	3075	0	3075	341	3075	0
Nova Scotia	4517	0	0	0	0	0	4520	0	532	0	0	0	0	0	532	7	532	0	532	64	559	0
New Brunswick	51415	0	0	0	0	1	18335	0	940	0	0	0	0	0	931	9	931	0	931	50	886	0
Atlantic	69180	0	0	0	0	1	36103	13	14716	3	0	1	0	0	14719	92	14120	2	14707	2428	4520	0
Région Nord-Est	3833	0	0	0	0	0	913	1	0	0	0	0	0	0	0	0	0	0	N.A.	N.A.	0	0
Québec-Chaudière-Appalaches	689	0	0	1	1	0	769	0	488	0	0	0	0	0	490	29	485	0	N.A.	N.A.	468	14
Centre-du-Québec	805	0	0	0	0	0	814	1	272	0	0	1	0	0	270	17	272	0	N.A.	N.A.	269	1
Montréal-Laval	6782	0	0	0	0	0	5825	32	3526	0	0	2	0	0	3580	124	3510	2	N.A.	N.A.	3510	51
Ouest du Québec	1565	0	0	0	0	0	1509	0	0	0	0	0	0	0	0	0	0	0	N.A.	N.A.	0	0
Montérégie	597	0	0	0	0	0	597	0	0	0	0	0	0	0	0	0	0	0	N.A.	N.A.	0	0
Province of Québec	14271	0	0	1	1	0	10427	34	4286	0	0	3	0	0	4340	170	4267	2	N.A.	N.A.	4247	66
P.H.O.L. - Ottawa	477	0	0	0	0	0	477	1	404	0	0	0	0	0	404	0	403	0	404	22	403	1
CHEO - Ottawa	4477	0	0	1	1	1	4074	5	667	0	0	0	0	0	667	12	667	1	667	77	667	0
P.H.O.L. - Kingston	781	0	0	1	1	0	781	0	512	0	0	0	0	0	512	4	506	0	512	106	506	0
UHN / Mount Sinai Hospital	10575	2	0	2	4	1	10506	6	9974	3	2	3	8	0	8348	9	9934	8	9731	96	7770	6
P.H.O.L. - Toronto	5384	0	0	0	0	0	5381	2	4661	0	0	0	0	3	4662	12	4660	1	4661	145	4660	5
Sick Kids Hospital - Toronto	1035	0	0	0	0	0	0	0	1035	0	0	0	0	0	1035	16	1035	0	1035	97	1035	1
Sunnybrook & Women's College HSC	0	0	0	0	0	0	0	0	0	0	0	0	0	0	0	0	0	0	0	0	0	0
P.H.O.L. - Sault Ste. Marie	147	0	0	2	2	0	145	0	90	0	0	0	0	0	90	0	90	0	90	6	90	0
P.H.O.L. - Timmins	608	0	0	0	0	0	608	0	159	0	0	0	0	0	159	0	158	0	159	31	158	0
St. Joseph's - London	218	0	0	0	0	0	218	0	55	0	0	0	0	0	55	0	55	0	91	8	36	0
P.H.O.L. - London	1792	1	0	5	6	2	1782	0	1239	0	0	0	0	2	1239	2	1234	0	1239	126	1234	3
P.H.O.L. - Orillia	374	0	0	1	1	0	372	0	190	0	0	0	0	0	190	1	190	0	190	12	190	0
P.H.O.L. - Thunder Bay	396	0	0	0	0	0	396	0	382	0	0	0	0	0	383	3	382	0	382	137	382	0
P.H.O.L. - Sudbury	449	0	0	0	0	0	447	0	325	0	0	0	0	0	325	2	325	0	325	28	325	0
P.H.O.L. - Hamilton	1422	0	0	0	0	0	1371	1	1151	0	0	0	0	0	1151	2	1151	0	1151	98	1151	0
P.H.O.L. - Peterborough	459	0	0	1	1	0	413	0	316	0	0	0	0	0	316	0	315	0	316	24	315	0
St. Joseph's - Hamilton	8542	0	0	0	0	0	8542	2	8542	0	0	1	0	0	8542	19	8542	0	8542	427	0	0
Province of Ontario	37136	3	0	13	16	4	35513	17	29702	3	2	4	8	5	28078	82	29647	10	29495	1440	18922	16
Manitoba	42674	0	0	2	2	1	42664	68	2687	0	1	1	0	0	2687	18	2915	1	2687	143	2915	3
Province of Saskatchewan	120336	0	0	0	0	0	17853	4	1633	0	0	1	1	0	1633	10	1633	4	1633	165	1633	8
Province of Alberta	111958	4	0	6	10	0	73778	0	73778	2	18	3	6	0	73778	137	73778	11	73778	6204	73778	23
Prairies	274968	4	0	8	12	1	134295	72	78098	2	19	5	7	0	78098	165	78326	16	78098	6512	78326	34
British Columbia	74392	3	8	1	10	8	73982	6	15423	1	4	0	10	5	15963	85	15813	58	15628	1317	11608	19
Yukon	4541	0	0	8	8	7	4479	4	N.A.	N.A.	N.A.	N.A.	N.A.	N.A.	N.A.	N.A.	N.A.	N.A.	N.A.	N.A.	N.A.	N.A.
Northwest Territories	1122	0	0	0	0	0	1086	0	1086	0	0	0	1	0	1086	9	1086	1	1086	317	1086	1
Nunavut	1111	0	0	0	0	0	1094	0	1094	3	1	0	0	0	1094	25	1094	5	1094	281	184	0
Territories	6774	0	0	8	8	7	6659	4	2180	3	1	0	1	0	2180	34	2180	6	2180	598	1270	1
CANADA	476721	10	8	31	47	21	296979	146	144405	12	26	13	26	10	143378	628	144353	94	140108	12295	118893	136

The data in the RVDSS report represent surveillance data available at the time of writing. Missing data are denoted by N.A.

Specimens from YT, NT and NU are sent to reference laboratories in other provinces and reported results reflect specimens identified as originating from YT, NT or NU.

Results from British Columbia comprise of specimens from the following sites: BC Children's and Women's Hospital, Children's and Women's Hospital Laboratory, Fraser Health Medical Microbiology Laboratory, Island Health, Providence Health Care, Powell River Hospital, St. Paul's Hospital, Vancouver General Hospital, Victoria General Hospital, BCCDC Public Health Laboratory, Interior Health Authority sites and Northern Health Authority sites.

Delays in the reporting of data may cause data to change retrospectively.

Due to reporting delays, the sum of weekly report totals do not add up to cumulative totals.

Influenza co-detections may cause the sum of A(H1N1)pdm09, A(H3), and A(UnS) positive results to exceed the sum of Total Flu A Positive results.

Figure 1: Number positive laboratory tests for other respiratory viruses by report week, Canada, 2020-21

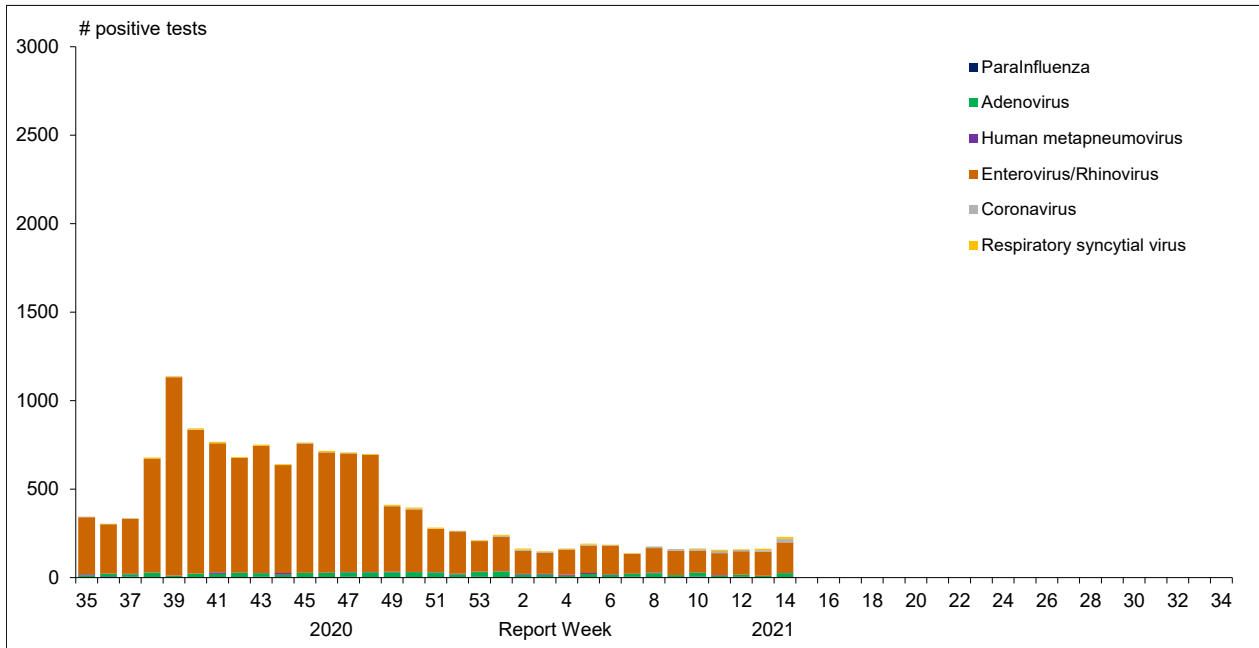


Figure 2 : Positive Influenza Tests (%) in Canada by Region by Week of Report

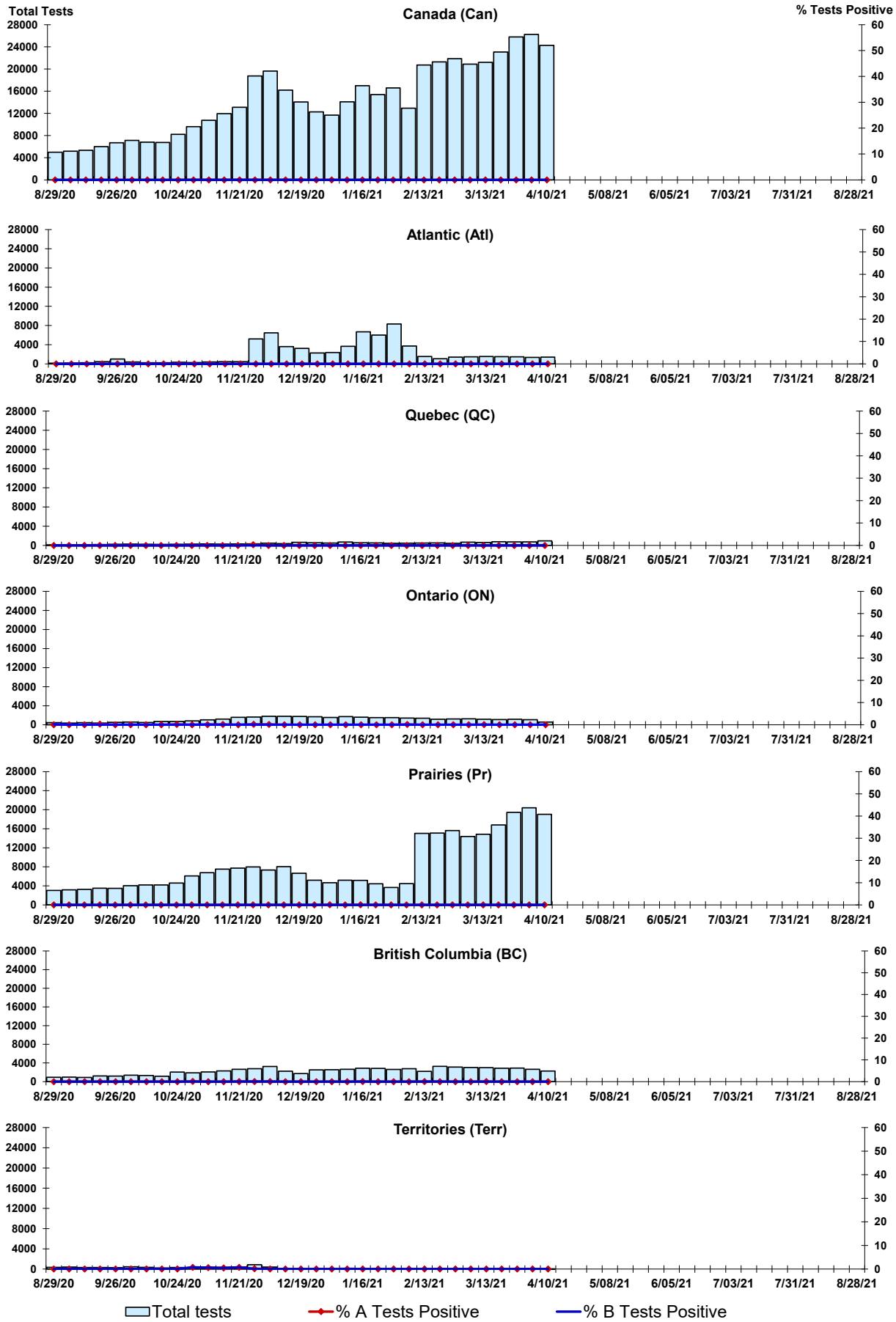


Figure 3: Positive Respiratory syncytial virus (RSV) Tests (%) in Canada by Region by Week of Report

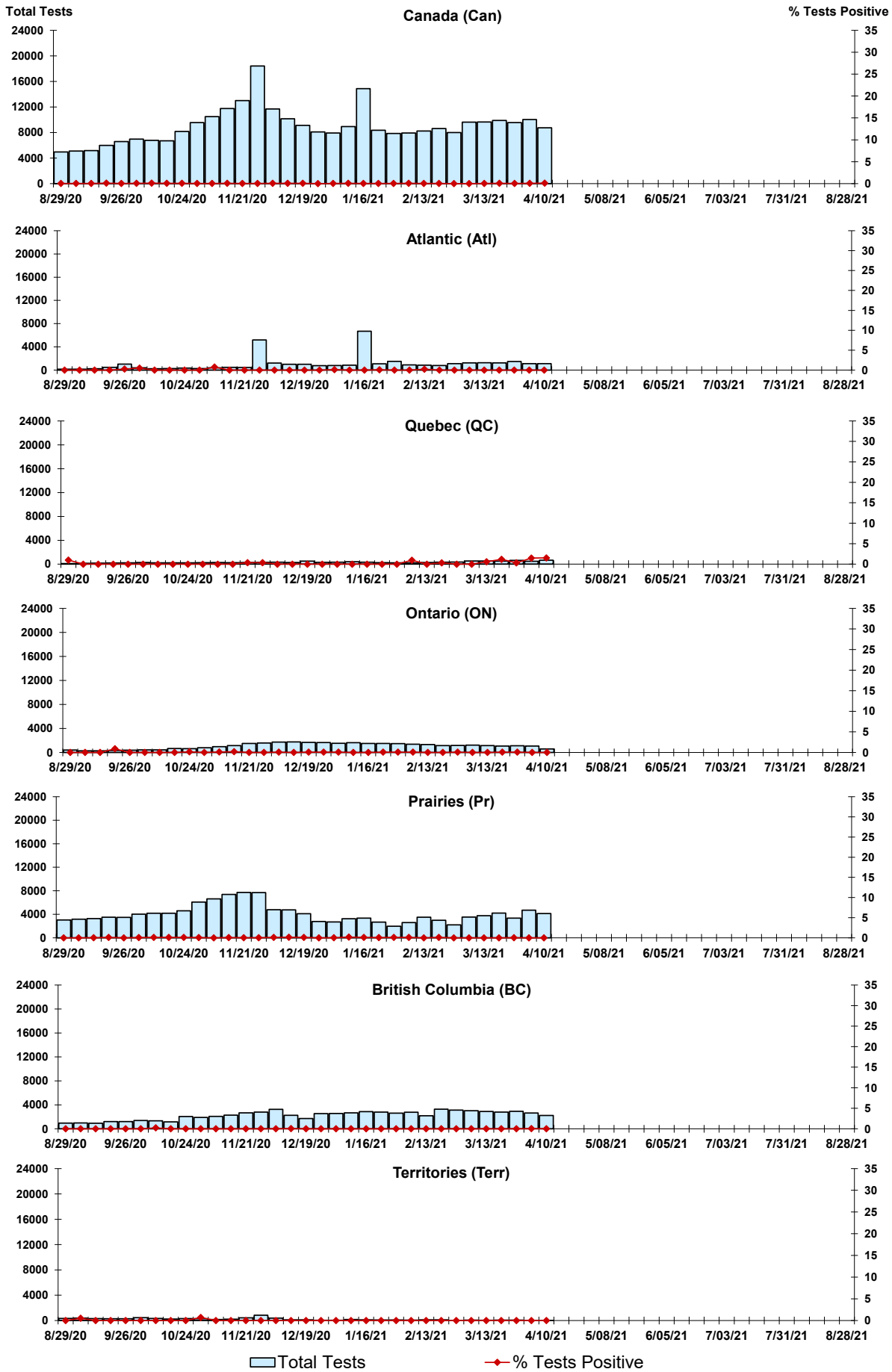
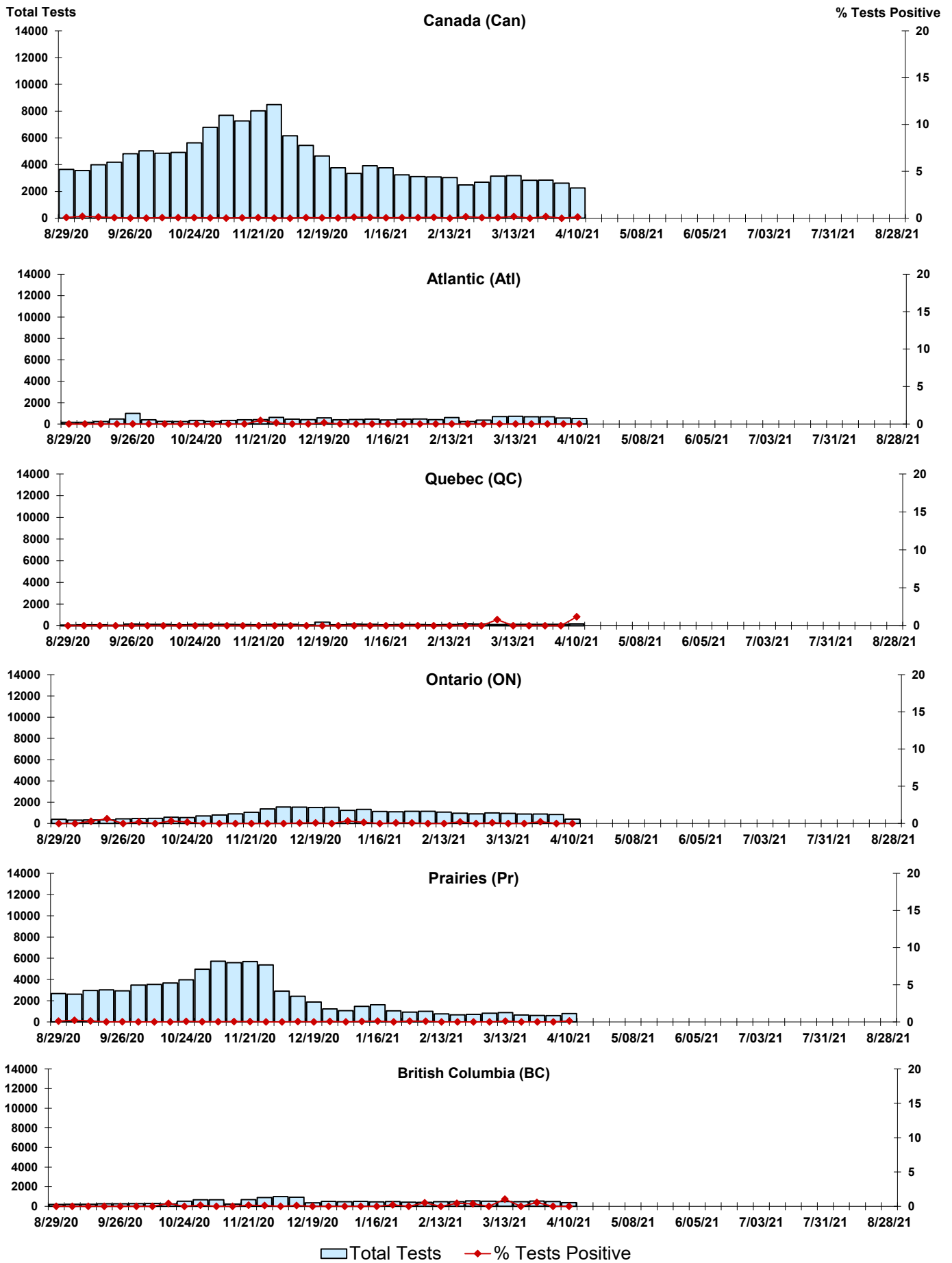


Figure 4: Positive Parainfluenza (PIV) Tests (%) in Canada by Region by Week of Report



Legend: Total Tests (light blue bar), % Tests Positive (red diamond with line)

Figure 5: Positive Adenovirus (adeno) Tests (%) in Canada by Region by Week of Report

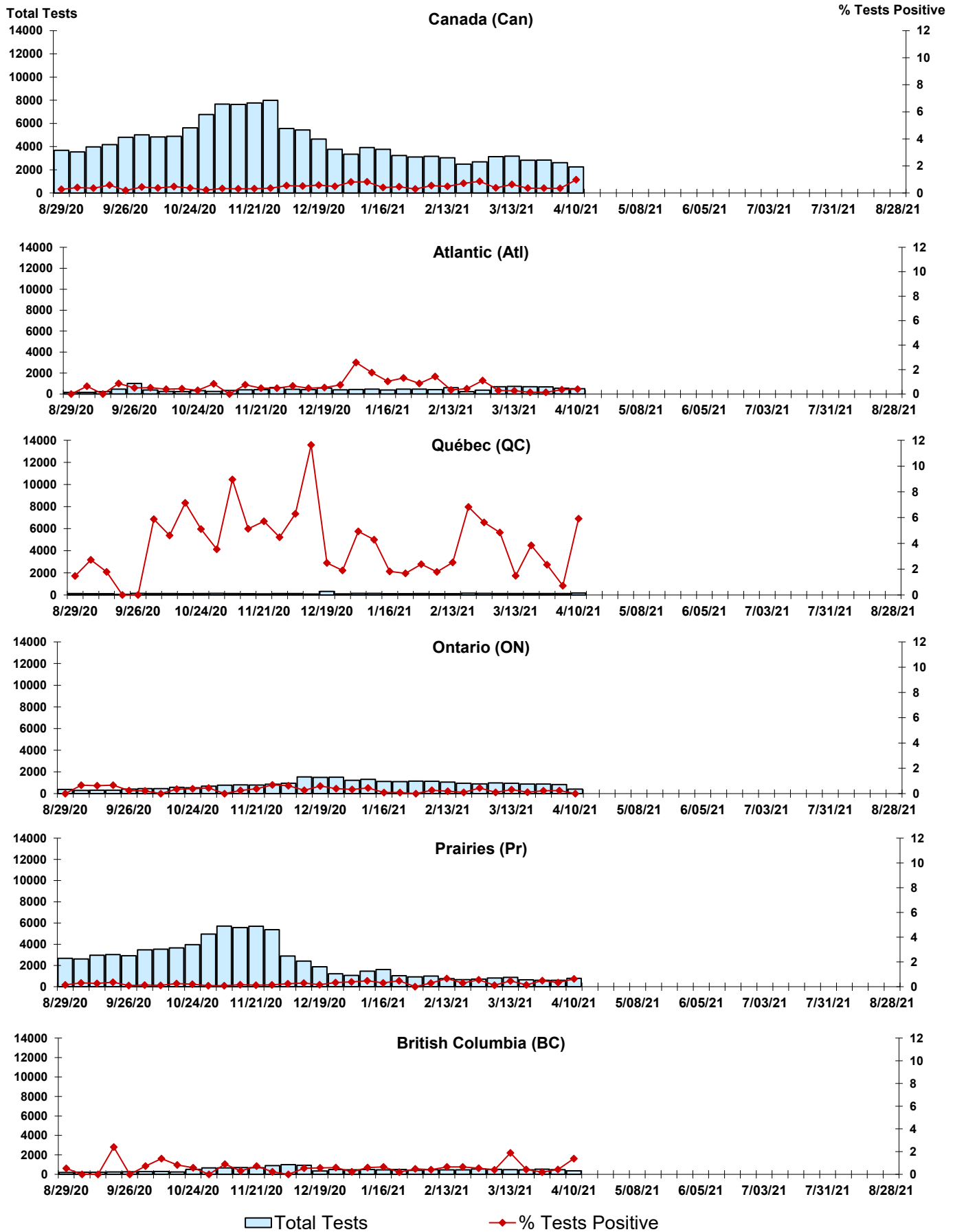


Figure 6: Positive human metapneumovirus (hMPV) Tests (%) in Canada by Region by Week of Report

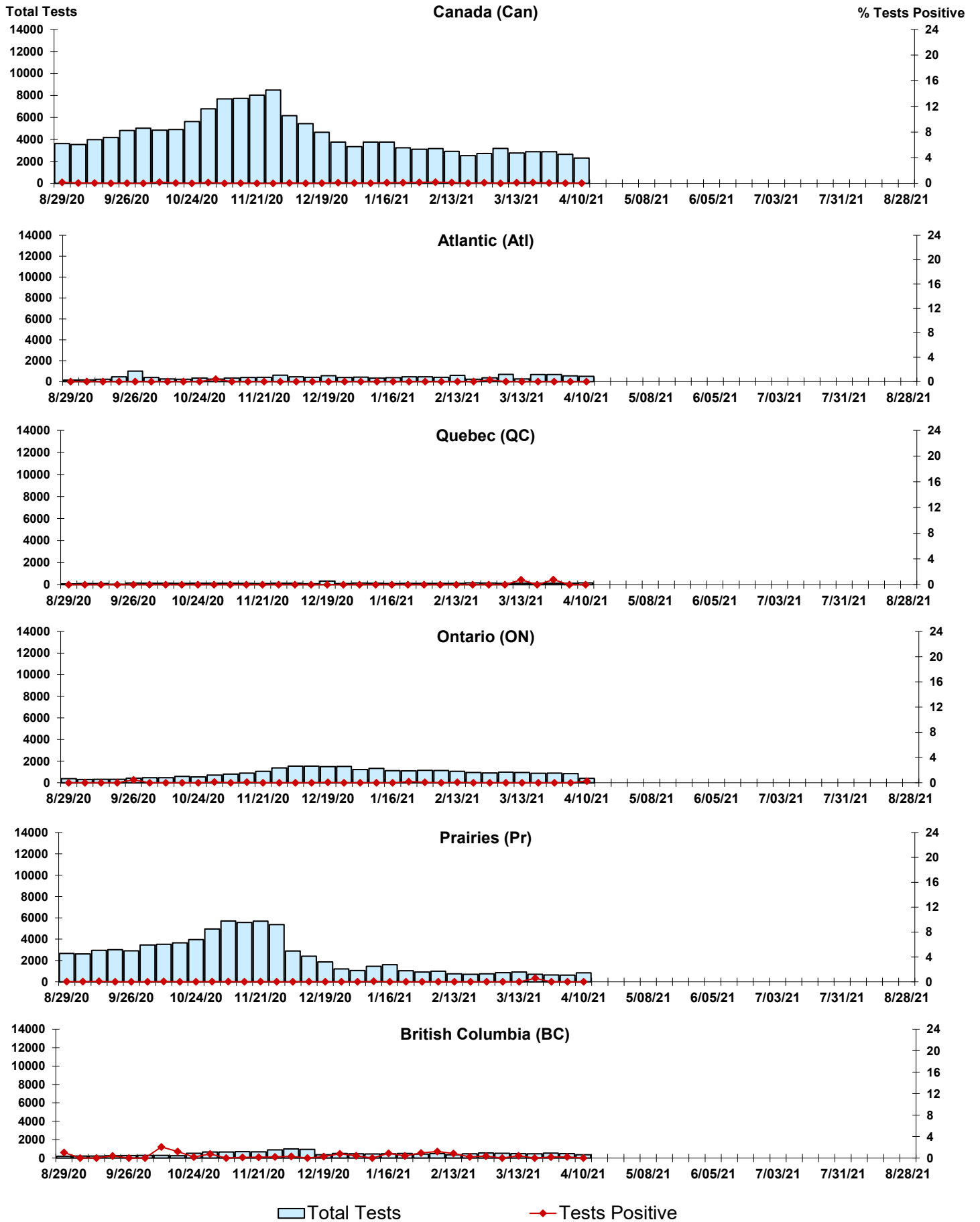


Figure 7: Positive Enterovirus/Rhinovirus (entero/rhino) Tests (%) in Canada by Region by Week of Report

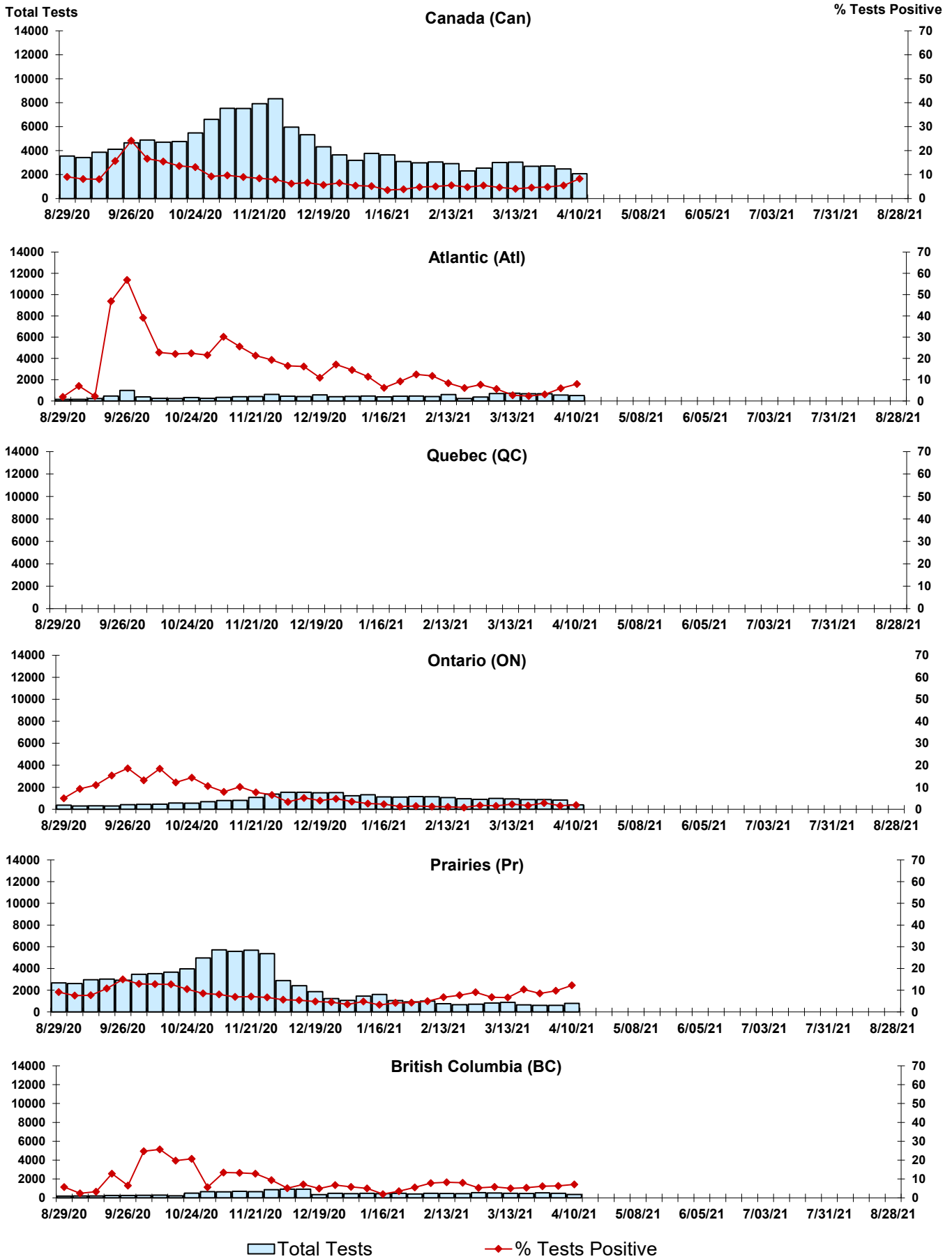
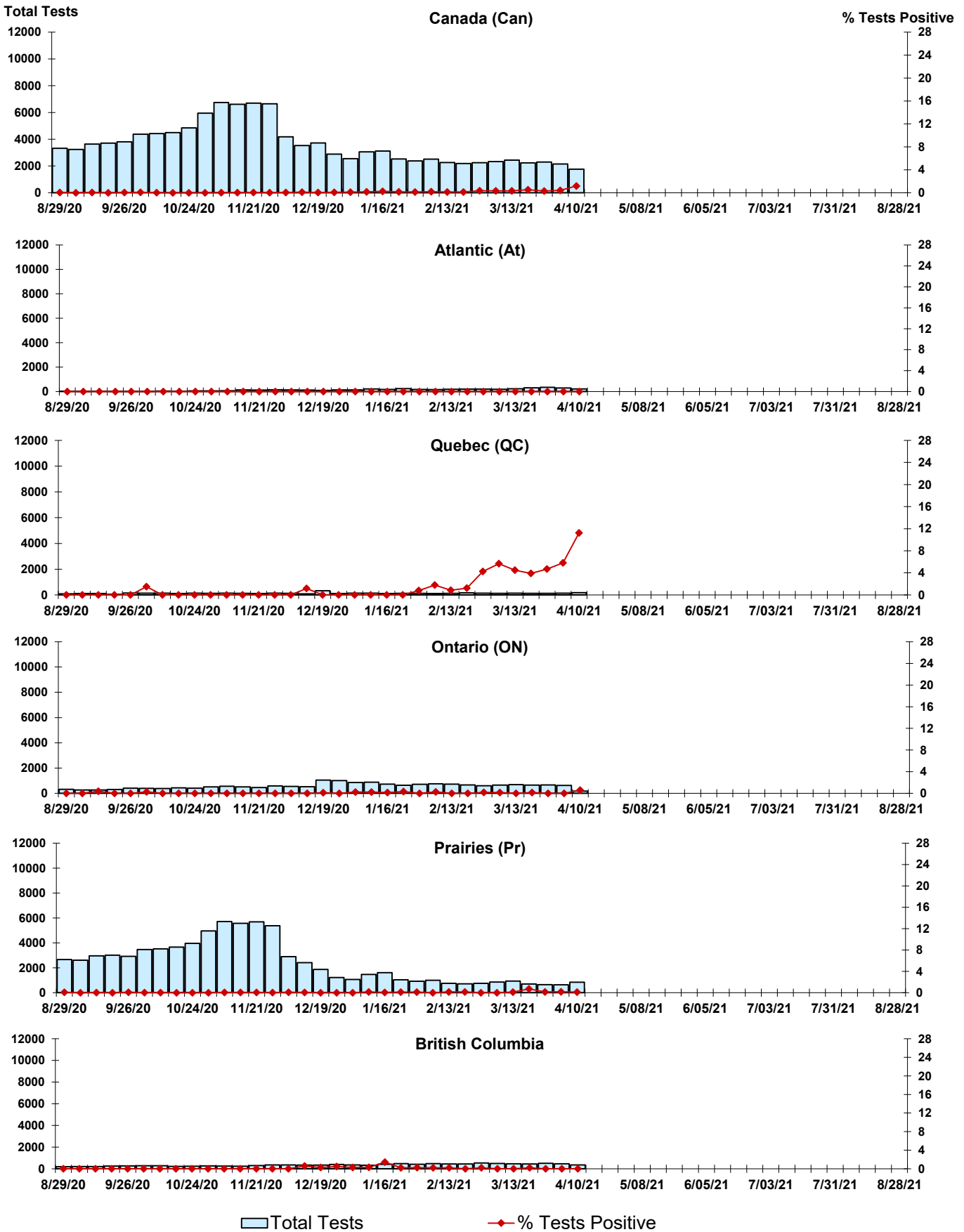


Figure 8: Positive Coronavirus (coron) Tests (%) in Canada by Region by Week of Report



Abbreviations:

A(H1N1)pdm09: Influenza A(H1N1)pdm09

A(H3): Influenza A(H3N2)

A (UnS): Influenza A (Unsubtyped)

Adeno: Adenovirus

CHEO: Children's Hospital of Eastern Ontario

Coron: Coronavirus

Enterovirus: Enterovirus

hMPV: human metapneumovirus

HSC: Health Sciences Centre

N.A.: Not Applicable

P.H.L.: Public Health Laboratory

P.H.O.L.: Public Health Ontario Laboratory

PIV: Parainfluenza

Rhino: Rhinovirus

RSV: Respiratory syncytial virus

UHN: University Health Network

Notes:

The data in the RVDSS report represent surveillance data available at the time of writing. Missing data are denoted by N.A.

Specimens from Yukon (YT), Northwest Territories (NT) and Nunavut (NU) are sent to reference laboratories in other provinces. Results reported for the Territories reflect the number of specimens that are identified as originating from YT, NT or NU.

Delays in the reporting of data may cause data to change retrospectively.

Due to reporting delays, the sum of weekly report totals do not add up to cumulative totals.