

Respiratory Virus Report, Week 16 - ending April 24, 2021

The Respiratory Virus Detection Surveillance System collects data from select laboratories across Canada on the number of tests performed and the number of tests positive for influenza and other respiratory viruses. Data are reported on a weekly basis year-round to the Centre for Immunization and Respiratory Infectious Diseases (CIRID), Public Health Agency of Canada. These data are also summarized in the weekly FluWatch report.

In this Respiratory Virus Report, the number of detections of coronavirus reflects only seasonal human coronaviruses, not the novel pandemic coronavirus (SARS-CoV2) that causes COVID-19. For information on COVID-19, see the [Coronavirus disease \(COVID-19\): Outbreak](#)

Table 1: Respiratory Virus Detections/Isolations for the week ending April 24, 2021 (Reporting Week 202116)

Reporting Laboratory	Flu Tested	A(H1N1)pdm09 Positive	A(H3) Positive	A(UnS) Positive	Total Flu A Positive	Total Flu B Positive	RSV Tested	RSV Positive	PIV Tested	PIV 1 Positive	PIV 2 Positive	PIV 3 Positive	PIV 4 Positive	Other PIV Positive	Adeno Tested	Adeno Positive	hMPV Tested	hMPV Positive	Entero/Rhino Tested	Entero/Rhino Positive	Coron Tested	Coron Positive
Newfoundland	370	0	0	0	0	0	370	0	370	0	0	1	0	0	371	3	370	0	370	22	N.A.	N.A.
Prince Edward Island	159	0	0	0	0	0	159	0	159	0	0	0	0	0	159	0	159	0	159	21	159	0
Nova Scotia	591	0	0	0	0	0	591	0	16	0	0	0	1	0	16	0	16	0	16	2	16	0
New Brunswick	450	0	0	0	0	0	450	0	18	0	0	0	0	0	18	0	18	0	18	1	18	0
Atlantic	1570	0	0	0	0	0	1570	0	563	0	0	1	1	0	564	3	563	0	563	46	193	0
Région Nord-Est	362	0	0	0	0	0	25	0	1	0	0	0	0	0	1	0	1	0	N.A.	N.A.	1	0
Québec-Chaudière-Appalaches	19	0	0	0	0	0	17	0	76	0	0	0	0	0	76	0	76	0	N.A.	N.A.	76	6
Centre-du-Québec	25	0	0	0	0	0	25	0	16	0	0	0	0	0	16	1	16	0	N.A.	N.A.	16	0
Montréal-Laval	322	0	0	0	0	0	322	21	94	1	0	0	0	0	94	1	94	0	N.A.	N.A.	94	7
Ouest du Québec	120	0	0	0	0	0	120	0	0	0	0	0	0	0	0	0	0	0	N.A.	N.A.	0	0
Montérégie	122	0	0	0	0	0	122	0	0	0	0	0	0	0	0	0	0	0	N.A.	N.A.	0	0
Province of Québec	970	0	0	0	0	0	631	21	187	1	0	0	0	0	187	2	187	0	N.A.	N.A.	187	13
P.H.O.L. - Ottawa	22	0	0	0	0	0	22	0	13	0	0	0	0	0	13	0	13	0	13	0	13	0
CHEO - Ottawa	86	0	0	0	0	0	86	0	30	0	0	0	0	0	30	0	30	0	30	2	30	1
P.H.O.L. - Kingston	14	0	0	0	0	0	14	0	7	0	0	0	0	0	7	0	7	0	7	0	7	0
UHN / Mount Sinai Hospital	445	0	0	0	0	0	445	0	53	0	0	0	0	0	53	0	53	0	53	0	53	0
P.H.O.L. - Toronto	197	0	0	0	0	0	197	0	167	0	0	0	0	0	167	0	167	0	167	3	167	0
Sick Kids Hospital - Toronto	14	0	0	0	0	0	0	0	14	0	0	0	0	0	14	0	14	0	14	3	14	0
Sunnybrook & Women's College HSC	N.A.	N.A.	N.A.	N.A.	N.A.	N.A.	N.A.	N.A.	N.A.	N.A.	N.A.	N.A.	N.A.	N.A.	N.A.	N.A.	N.A.	N.A.	N.A.	N.A.	N.A.	N.A.
P.H.O.L. - Sault Ste. Marie	7	0	0	0	0	0	7	0	4	0	0	0	0	0	4	0	4	0	4	0	4	0
P.H.O.L. - Timmins	5	0	0	0	0	0	5	0	4	0	0	0	0	0	4	0	4	0	4	0	4	0
St. Joseph's - London	N.A.	N.A.	N.A.	N.A.	N.A.	N.A.	N.A.	N.A.	N.A.	N.A.	N.A.	N.A.	N.A.	N.A.	N.A.	N.A.	N.A.	N.A.	N.A.	N.A.	N.A.	N.A.
P.H.O.L. - London	22	0	0	0	0	0	22	0	10	0	0	0	0	0	10	0	10	0	10	1	10	0
P.H.O.L. - Orillia	6	0	0	0	0	0	6	0	0	0	0	0	0	0	0	0	0	0	0	0	0	0
P.H.O.L. - Thunder Bay	1	0	0	0	0	0	1	0	1	0	0	0	0	0	1	0	1	0	1	0	1	0
P.H.O.L. - Sudbury	2	0	0	0	0	0	2	0	0	0	0	0	0	0	0	0	0	0	0	0	0	0
P.H.O.L. - Hamilton	9	0	0	0	0	0	9	0	5	0	0	0	0	0	5	0	5	0	5	0	5	0
P.H.O.L. - Peterborough	11	0	0	0	0	0	11	0	6	0	0	0	0	0	6	0	6	0	6	0	6	0
St. Joseph's - Hamilton	N.A.	N.A.	N.A.	N.A.	N.A.	N.A.	N.A.	N.A.	N.A.	N.A.	N.A.	N.A.	N.A.	N.A.	N.A.	N.A.	N.A.	N.A.	N.A.	N.A.	N.A.	N.A.
Province of Ontario	841	0	0	0	0	0	827	0	314	0	0	0	0	0	314	0	314	0	314	9	314	1
Province of Manitoba	1646	0	0	0	0	0	1646	0	11	0	0	0	0	0	11	0	77	0	11	3	77	1
Province of Saskatchewan	16231	0	0	0	0	0	1998	0	25	0	0	0	0	0	25	1	25	0	25	4	25	0
Province of Alberta	2699	0	0	0	0	0	574	0	574	0	0	0	0	0	574	0	574	0	574	52	574	1
Prairies	20576	0	0	0	0	0	4218	0	610	0	0	0	0	0	610	1	676	0	610	59	676	2
British Columbia	2530	0	0	0	0	0	2516	0	412	0	0	0	1	0	412	1	412	1	410	33	343	0
Yukon	61	0	0	0	0	0	61	0	N.A.	N.A.	N.A.	N.A.	N.A.	N.A.	N.A.	N.A.	N.A.	N.A.	N.A.	N.A.	N.A.	N.A.
Northwest Territories	4	0	0	0	0	0	1	0	1	0	0	0	0	0	1	0	1	0	1	0	1	0
Nunavut	3	0	0	0	0	0	2	0	2	0	0	0	0	0	2	0	2	0	2	0	2	0
Territories	68	0	0	0	0	0	64	0	3	0	0	0	0	0	3	0	3	0	3	0	3	0
CANADA	26555	0	0	0	0	0	9826	21	2089	1	0	1	2	0	2090	7	2155	1	1900	147	1716	16

The data in the RVDSS report represent surveillance data available at the time of writing. Missing data are denoted by N.A.

Specimens from Yukon (YT), Northwest Territories (NT) and Nunavut (NU) are sent to reference laboratories in other provinces and reported results reflect specimens identified as originating from YT, NT or NU.

Results from British Columbia comprise of specimens from the following sites: BC Children's and Women's Hospital, Fraser Health Medical Microbiology Laboratory, Island Health, Providence Health Care, Powell River Hospital, St. Paul's Hospital, Vancouver General Hospital, Victoria General Hospital, BCCDC Public Health Laboratory, Interior Health Authority sites and Northern Health Authority sites.

Delays in the reporting of data may cause data to change retrospectively.

Influenza co-detections may cause the sum of A(H1N1)pdm09, A(H3), and A(UnS) positive results to exceed the sum of Total Flu A Positive results.

Table 2: Respiratory Virus Detections/Isolations for the period August 23, 2020 - April 24, 2021 (Reporting Weeks 202035-202116)

Reporting Laboratory	Flu Tested	A(H1N1)pdm09 Positive	A(H3) Positive	A(UnS) Positive	Total Flu A Positive	Total Flu B Positive	RSV Tested	RSV Positive	PIV Tested	PIV 1 Positive	PIV 2 Positive	PIV 3 Positive	PIV 4 Positive	Other PIV Positive	Adeno Tested	Adeno Positive	hMPV Tested	hMPV Positive	Entero/Rhino Tested	Entero/Rhino Positive	Coron Tested	Coron Positive
Newfoundland	10960	0	0	0	0	0	10960	10	10960	1	0	2	0	0	10973	50	10373	2	10960	2002	N.A.	N.A.
Prince Edward Island	3456	0	0	0	0	0	3456	4	3452	3	0	0	1	0	3452	33	3452	0	3452	390	3452	0
Nova Scotia	5485	0	0	0	0	0	5488	0	567	0	0	0	1	0	567	8	567	1	567	70	594	0
New Brunswick	52447	0	0	0	1	1	18972	0	977	0	0	0	0	0	968	9	968	0	968	51	923	0
Atlantic	72348	0	0	0	0	1	38876	14	15956	4	0	2	2	0	15960	100	15360	3	15947	2513	4969	0
Région Nord-Est	4611	0	0	0	0	0	998	1	2	0	0	0	0	0	2	1	2	0	N.A.	N.A.	2	0
Québec-Chaudière-Appalaches	715	0	0	1	1	0	796	0	582	0	0	0	0	0	584	32	579	0	N.A.	N.A.	562	26
Centre-du-Québec	847	0	0	0	0	0	856	1	309	0	0	1	0	0	307	18	309	0	N.A.	N.A.	306	2
Montréal-Laval	7466	0	0	0	0	0	6508	71	3738	1	0	2	0	0	3792	132	3722	2	N.A.	N.A.	3722	64
Ouest du Québec	1819	0	0	0	0	0	1761	0	0	0	0	0	0	0	0	0	0	0	N.A.	N.A.	0	0
Montérégie	810	0	0	0	0	0	810	1	0	0	0	0	0	0	0	0	0	0	N.A.	N.A.	0	0
Province of Québec	16268	0	0	1	1	0	11729	74	4631	1	0	3	0	0	4685	183	4612	2	N.A.	N.A.	4592	92
P.H.O.L. - Ottawa	515	0	0	0	0	0	515	1	431	0	0	0	0	0	431	0	430	0	431	22	430	1
CHEO - Ottawa	4650	0	0	1	1	1	4247	5	725	0	0	0	0	0	725	12	725	1	725	81	725	1
P.H.O.L. - Kingston	809	0	0	1	1	0	809	0	528	0	0	0	0	0	528	4	522	0	528	106	522	0
UHN / Mount Sinai Hospital	11943	2	0	2	4	1	11874	6	10142	3	2	3	8	0	8516	9	10102	8	9899	98	7938	6
P.H.O.L. - Toronto	5754	0	0	0	0	0	5751	2	4967	0	0	0	0	3	4968	12	4966	1	4967	151	4966	5
Sick Kids Hospital - Toronto	1130	0	0	0	0	0	0	0	1130	0	0	0	0	0	1130	17	1130	0	1130	112	1130	1
Sunnybrook & Women's College HSC	0	0	0	0	0	0	0	0	0	0	0	0	0	0	0	0	0	0	0	0	0	0
P.H.O.L. - Sault Ste. Marie	157	0	0	2	2	0	155	0	94	0	0	0	0	0	94	0	94	0	94	6	94	0
P.H.O.L. - Timmins	616	0	0	0	0	0	616	0	165	0	0	0	0	0	165	0	164	0	165	31	164	0
St. Joseph's - London	218	0	0	0	0	0	218	0	55	0	0	0	0	0	55	0	55	0	91	8	36	0
P.H.O.L. - London	1845	1	0	5	6	2	1835	0	1260	0	0	0	0	2	1260	2	1255	0	1260	127	1255	3
P.H.O.L. - Orillia	386	0	0	1	1	0	384	0	191	0	0	0	0	0	191	1	191	0	191	12	191	0
P.H.O.L. - Thunder Bay	399	0	0	0	0	0	399	0	385	0	0	0	0	0	386	3	385	0	385	137	385	0
P.H.O.L. - Sudbury	460	0	0	0	0	0	458	0	325	0	0	0	0	0	325	2	325	0	325	28	325	0
P.H.O.L. - Hamilton	1452	0	0	0	0	0	1397	1	1171	0	0	0	0	0	1171	2	1171	0	1171	98	1171	0
P.H.O.L. - Peterborough	476	0	0	1	1	0	430	0	327	0	0	0	0	0	327	0	326	0	327	24	326	0
St. Joseph's - Hamilton	8756	0	0	0	0	0	8756	2	8756	0	0	1	0	0	8756	19	8756	0	8756	436	0	0
Province of Ontario	39566	3	0	13	16	4	37844	17	30652	3	2	4	8	5	29028	83	30597	10	30445	1477	19658	17
Manitoba	45695	0	0	2	2	1	45685	68	2707	0	1	1	0	0	2707	18	3068	1	2707	149	3068	4
Province of Saskatchewan	155192	0	0	0	0	0	21880	4	1685	0	0	1	1	0	1685	11	1685	4	1685	171	1685	8
Province of Alberta	117549	4	0	6	10	0	75118	0	75118	2	18	3	7	0	75118	137	75118	11	75118	6313	75118	24
Prairies	318436	4	0	8	12	1	142683	72	79510	2	19	5	8	0	79510	166	79871	16	79510	6633	79871	36
British Columbia	78519	3	8	1	10	8	78081	6	16212	1	4	1	11	5	16752	91	16602	59	16409	1374	12322	19
Yukon	4717	0	0	8	8	7	4655	4	N.A.	N.A.	N.A.	N.A.	N.A.	N.A.	N.A.	N.A.	N.A.	N.A.	N.A.	N.A.	N.A.	N.A.
Northwest Territories	1138	0	0	0	0	0	1096	0	1096	0	0	0	1	0	1096	9	1096	1	1096	320	1096	1
Nunavut	1116	0	0	0	0	0	1098	0	1098	3	1	0	0	0	1098	25	1098	5	1098	281	188	0
Territories	6971	0	0	8	8	7	6849	4	2194	3	1	0	1	0	2194	34	2194	6	2194	601	1284	1
CANADA	532108	10	8	31	47	21	316062	187	149155	14	26	15	30	10	148129	657	149236	96	144505	12598	122696	165

The data in the RVDSS report represent surveillance data available at the time of writing. Missing data are denoted by N.A.

Specimens from YT, NT and NU are sent to reference laboratories in other provinces and reported results reflect specimens identified as originating from YT, NT or NU.

Results from British Columbia comprise of specimens from the following sites: BC Children's and Women's Hospital, Children's and Women's Hospital Laboratory, Fraser Health Medical Microbiology Laboratory, Island Health, Providence Health Care, Powell River Hospital, St. Paul's Hospital, Vancouver General Hospital, Victoria General Hospital, BCCDC Public Health Laboratory, Interior Health Authority sites and Northern Health Authority sites.

Delays in the reporting of data may cause data to change retrospectively.

Due to reporting delays, the sum of weekly report totals do not add up to cumulative totals.

Influenza co-detections may cause the sum of A(H1N1)pdm09, A(H3), and A(UnS) positive results to exceed the sum of Total Flu A Positive results.

Figure 1: Number positive laboratory tests for other respiratory viruses by report week, Canada, 2020-21

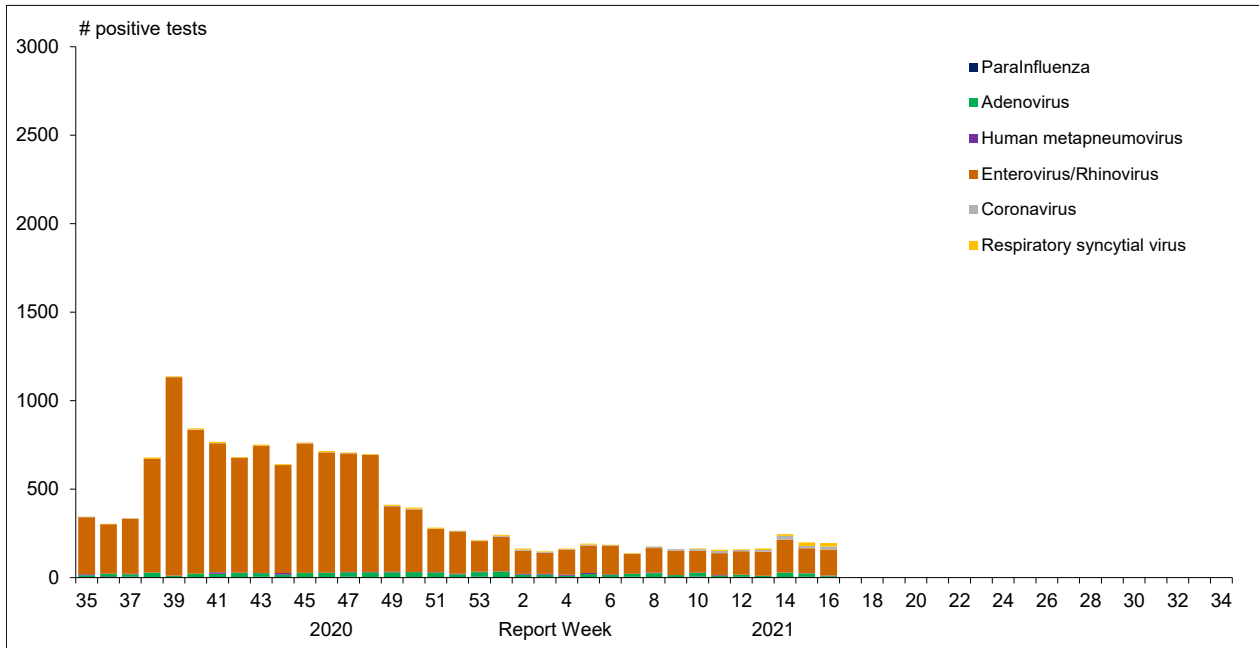


Figure 2 : Positive Influenza Tests (%) in Canada by Region by Week of Report

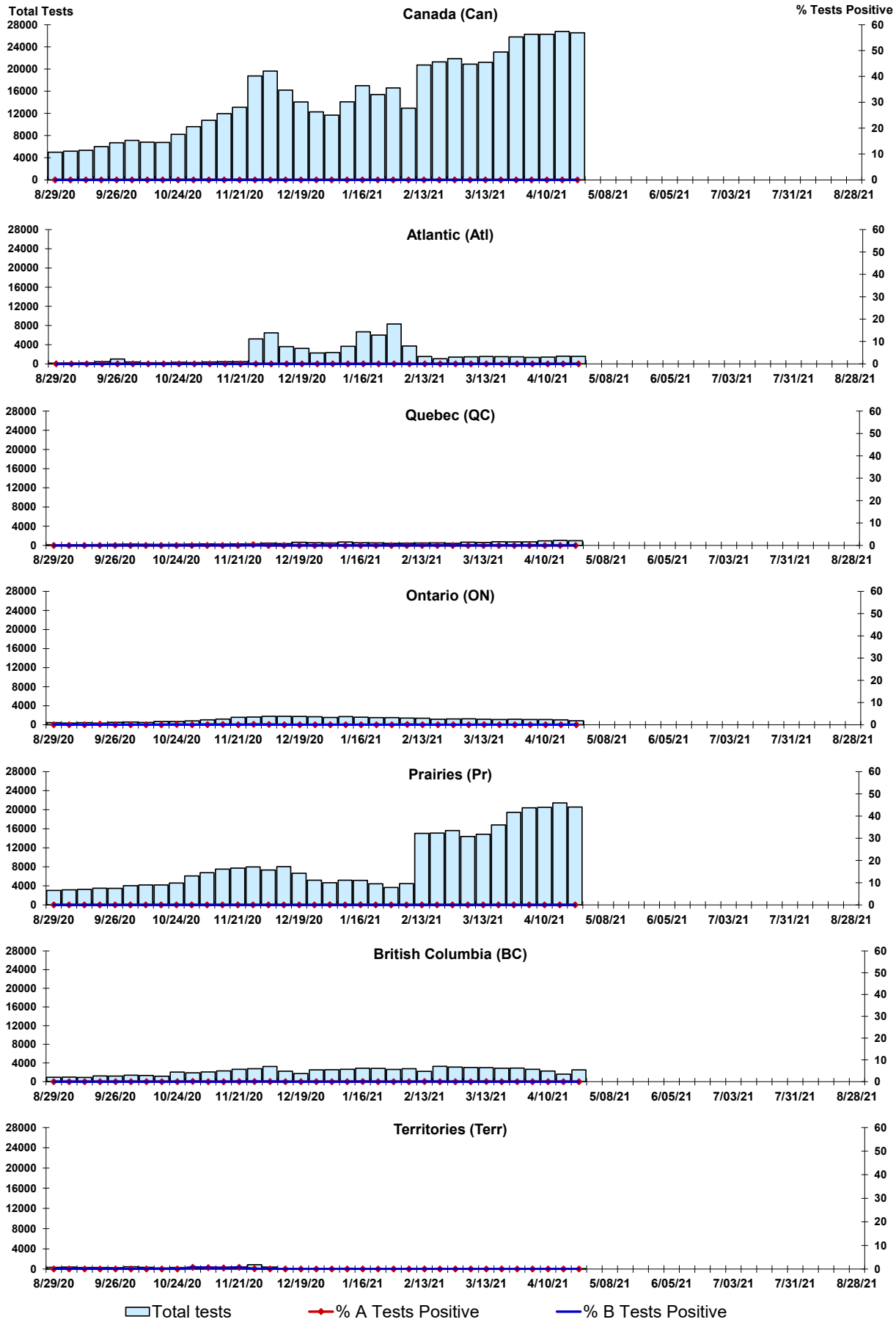


Figure 3: Positive Respiratory syncytial virus (RSV) Tests (%) in Canada by Region by Week of Report

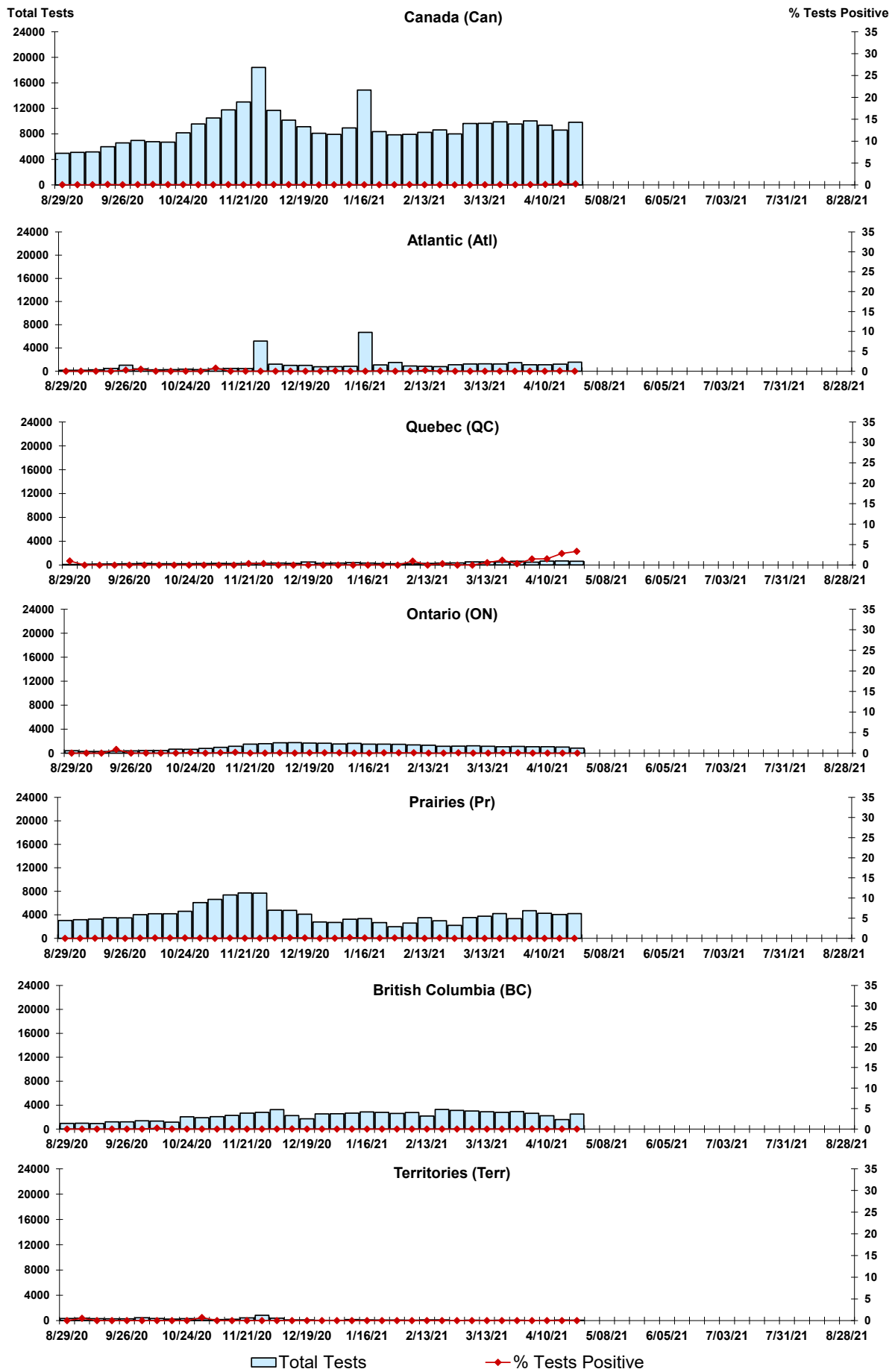
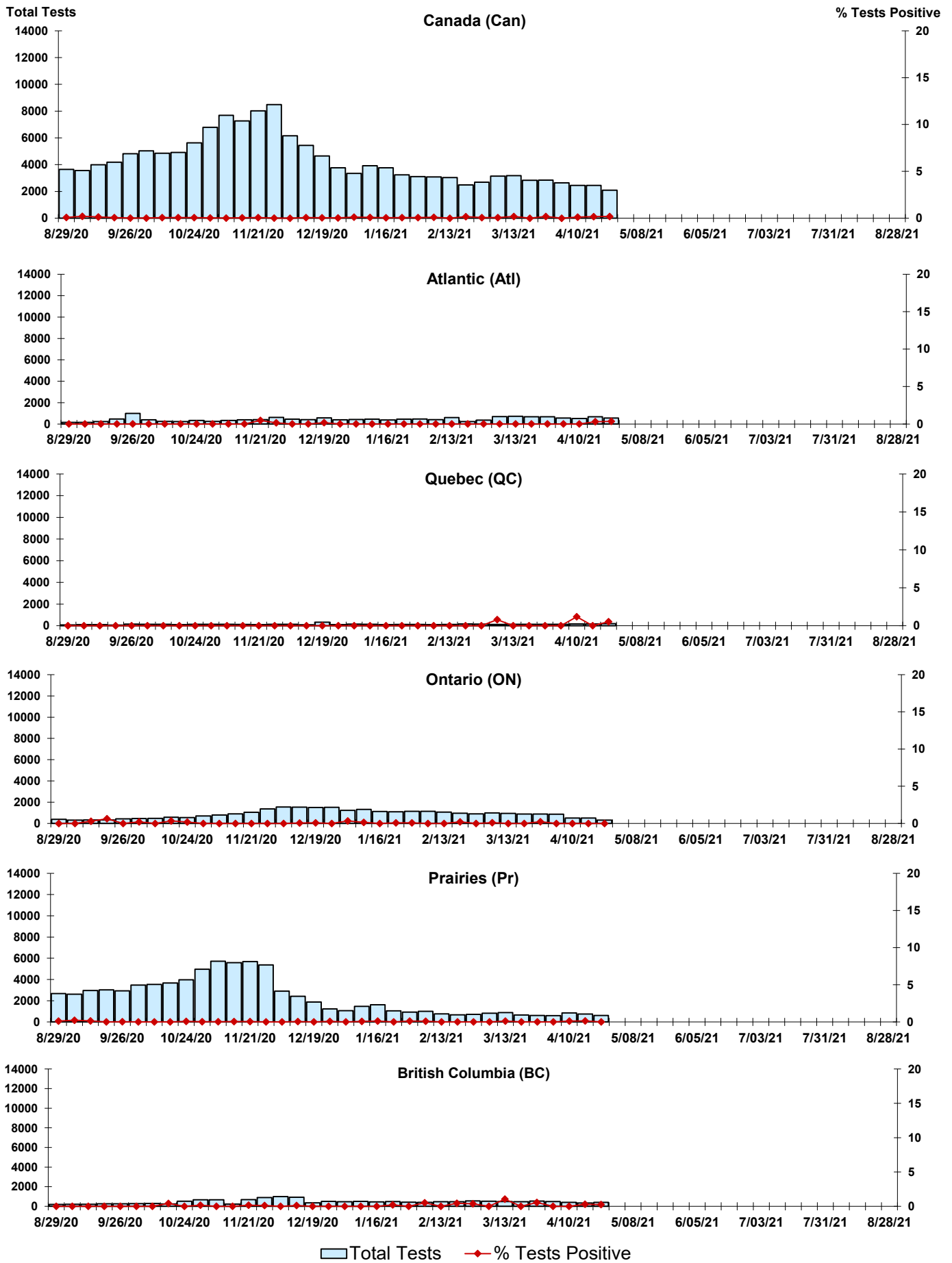


Figure 4: Positive Parainfluenza (PIV) Tests (%) in Canada by Region by Week of Report



■ Total Tests ◆ % Tests Positive

Figure 5: Positive Adenovirus (adeno) Tests (%) in Canada by Region by Week of Report

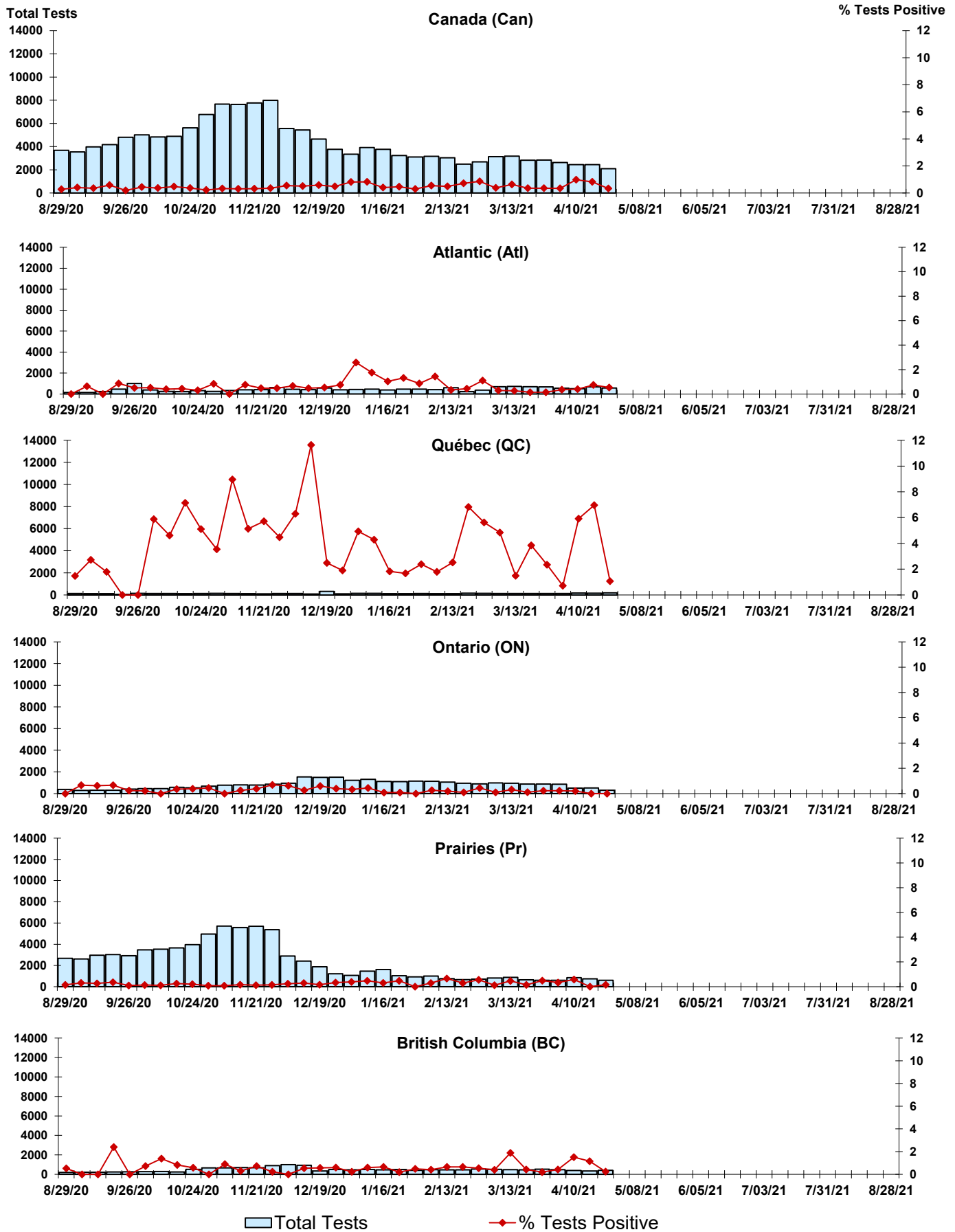


Figure 6: Positive human metapneumovirus (hMPV) Tests (%) in Canada by Region by Week of Report

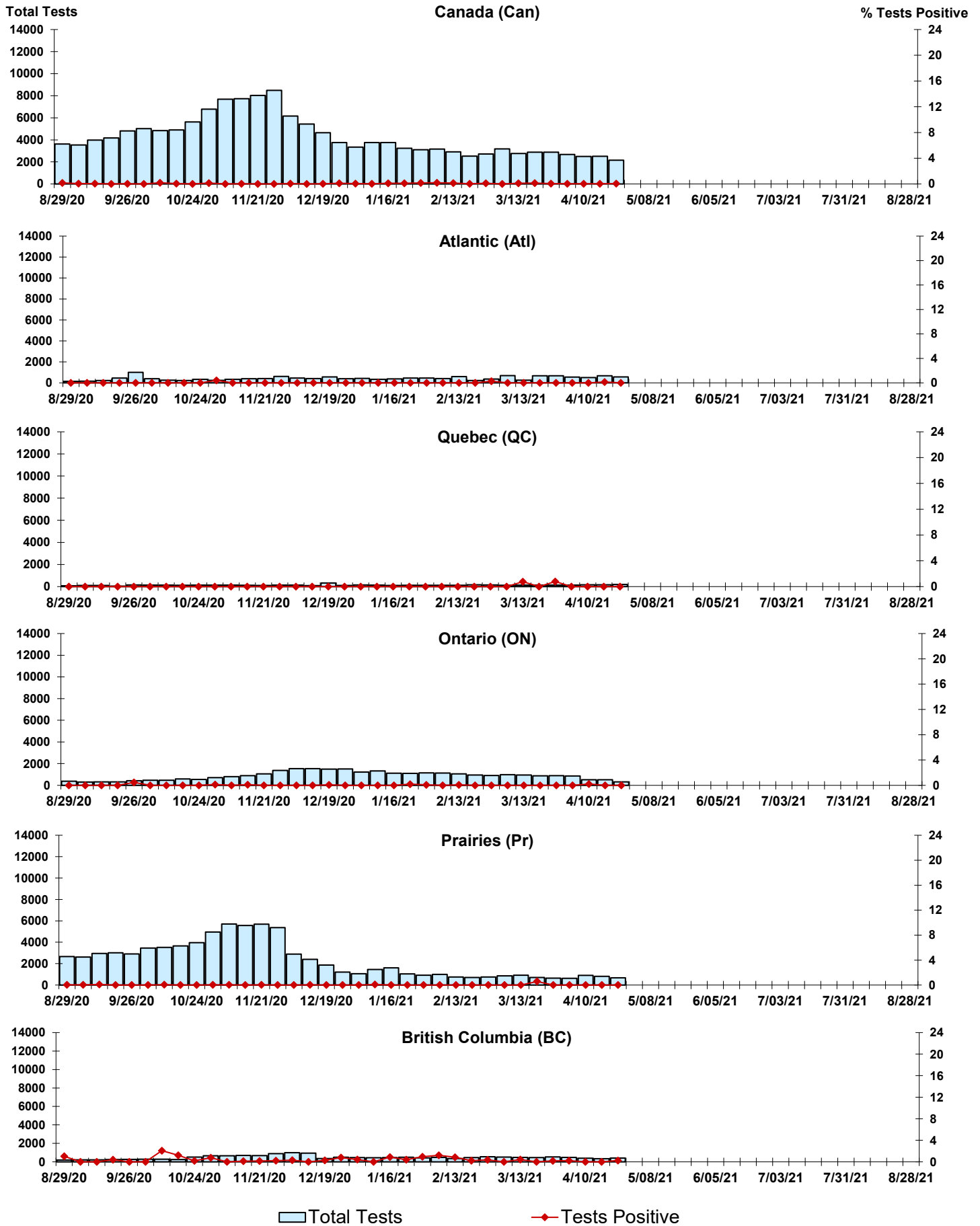


Figure 7: Positive Enterovirus/Rhinovirus (entero/rhino) Tests (%) in Canada by Region by Week of Report

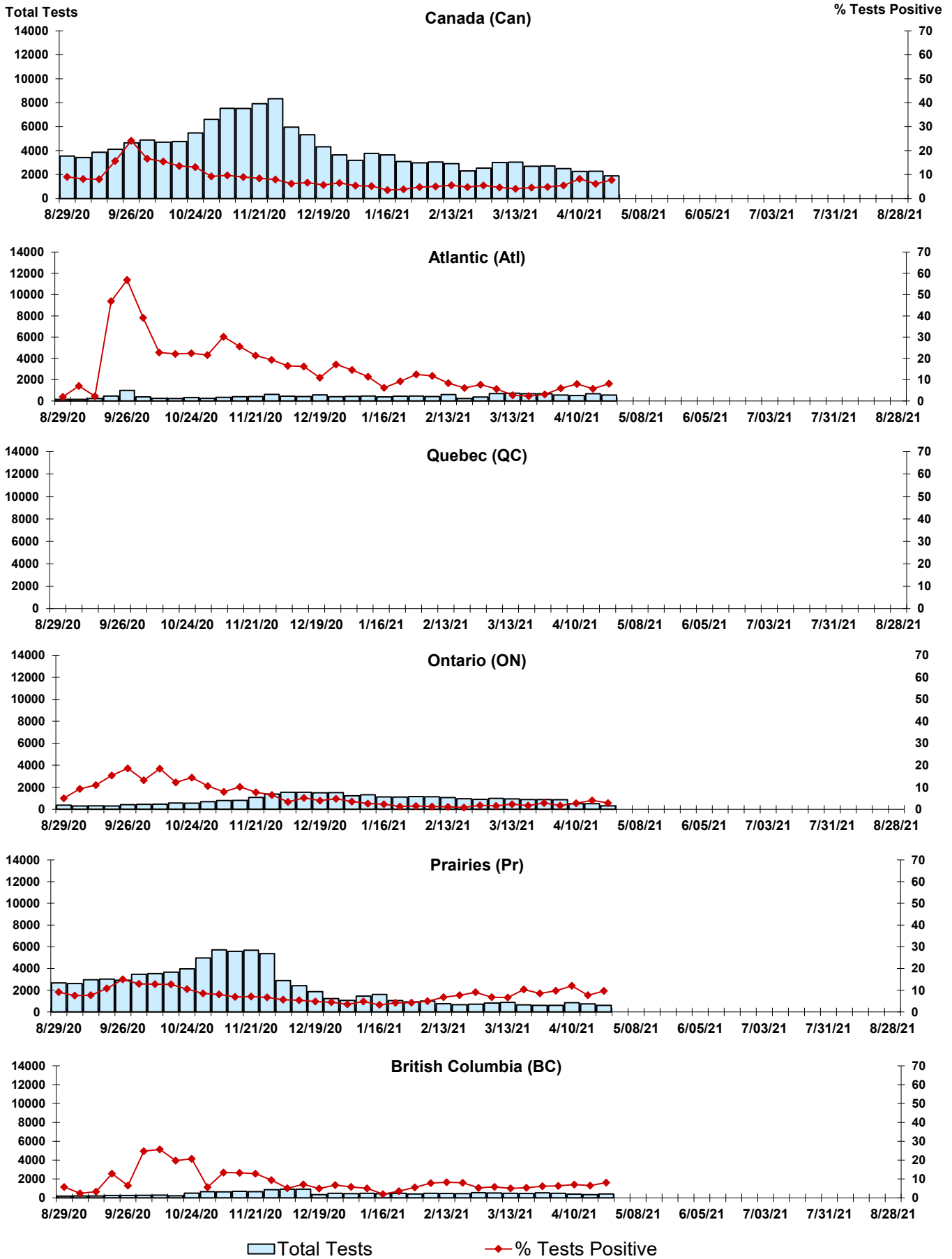
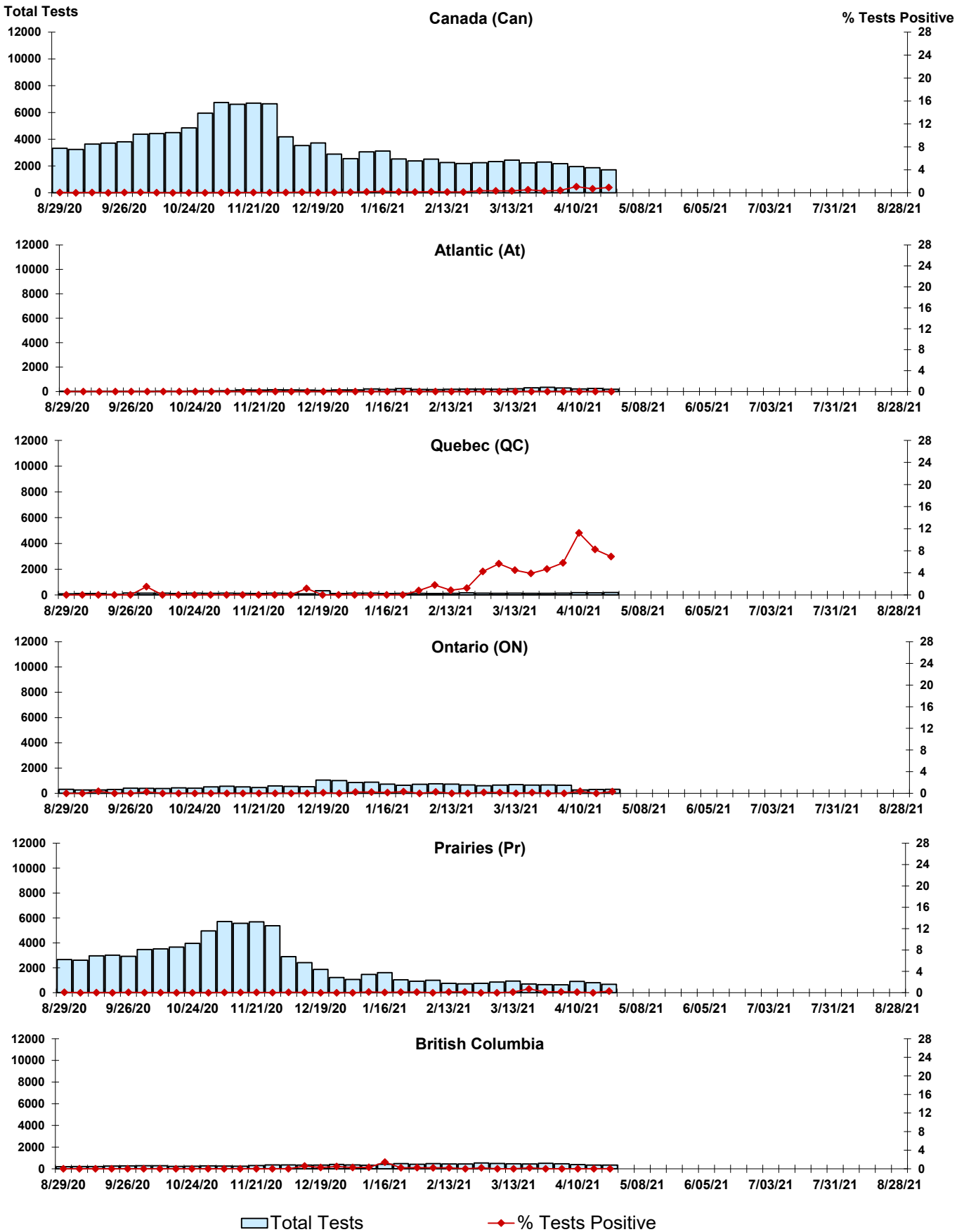


Figure 8: Positive Coronavirus (coron) Tests (%) in Canada by Region by Week of Report



Abbreviations:

A(H1N1)pdm09: Influenza A(H1N1)pdm09

A(H3): Influenza A(H3N2)

A (UnS): Influenza A (Unsubtyped)

Adeno: Adenovirus

CHEO: Children's Hospital of Eastern Ontario

Coron: Coronavirus

Enterovirus: Enterovirus

hMPV: human metapneumovirus

HSC: Health Sciences Centre

N.A.: Not Applicable

P.H.L.: Public Health Laboratory

P.H.O.L.: Public Health Ontario Laboratory

PIV: Parainfluenza

Rhino: Rhinovirus

RSV: Respiratory syncytial virus

UHN: University Health Network

Notes:

The data in the RVDSS report represent surveillance data available at the time of writing. Missing data are denoted by N.A.

Specimens from Yukon (YT), Northwest Territories (NT) and Nunavut (NU) are sent to reference laboratories in other provinces. Results reported for the Territories reflect the number of specimens that are identified as originating from YT, NT or NU.

Delays in the reporting of data may cause data to change retrospectively.

Due to reporting delays, the sum of weekly report totals do not add up to cumulative totals.