

Respiratory Virus Report, Week 18 - ending May 8, 2021

The Respiratory Virus Detection Surveillance System collects data from select laboratories across Canada on the number of tests performed and the number of tests positive for influenza and other respiratory viruses. Data are reported on a weekly basis year-round to the Centre for Immunization and Respiratory Infectious Diseases (CIRID), Public Health Agency of Canada. These data are also summarized in the weekly FluWatch report.

In this Respiratory Virus Report, the number of detections of coronavirus reflects only seasonal human coronaviruses, not the novel pandemic coronavirus (SARS-CoV2) that causes COVID-19. For information on COVID-19, see the [Coronavirus disease \(COVID-19\): Outbreak](#)

Table 1: Respiratory Virus Detections/Isolations for the week ending May 8, 2021 (Reporting Week 202118)

Reporting Laboratory	Flu Tested	A(H1N1)pdm09 Positive	A(H3) Positive	A(UnS) Positive	Total Flu A Positive	Total Flu B Positive	RSV Tested	RSV Positive	PIV Tested	PIV 1 Positive	PIV 2 Positive	PIV 3 Positive	PIV 4 Positive	Other PIV Positive	Adeno Tested	Adeno Positive	hMPV Tested	hMPV Positive	Entero/Rhino Tested	Entero/Rhino Positive	Coron Tested	Coron Positive
Newfoundland	283	0	0	0	0	0	283	0	283	0	0	0	0	0	283	1	283	0	283	21	N.A.	N.A.
Prince Edward Island	99	0	0	0	0	0	99	0	99	0	0	0	0	0	99	1	99	0	99	11	99	0
Nova Scotia	1267	0	0	0	0	0	1267	0	88	0	0	0	0	0	88	1	88	0	88	4	88	0
New Brunswick	450	0	0	0	0	0	317	0	170	0	0	0	0	0	170	0	170	0	170	0	170	0
Atlantic	2099	0	0	0	0	0	1966	0	640	0	0	0	0	0	640	3	640	0	640	36	357	0
Région Nord-Est	606	0	0	0	0	0	26	0	1	0	0	0	0	0	1	0	1	0	N.A.	N.A.	1	0
Québec-Chaudière-Appalaches	21	0	0	0	0	0	20	0	19	0	0	0	0	0	19	1	19	0	N.A.	N.A.	19	0
Centre-du-Québec	14	0	0	0	0	0	14	0	13	0	0	0	0	0	13	1	13	0	N.A.	N.A.	13	2
Montréal-Laval	378	0	0	0	0	0	378	23	129	0	0	2	0	0	129	5	129	0	N.A.	N.A.	129	11
Ouest du Québec	109	0	0	0	0	0	109	0	0	0	0	0	0	0	0	0	0	0	N.A.	N.A.	0	0
Montérégie	101	0	0	0	0	0	101	0	0	0	0	0	0	0	0	0	0	0	N.A.	N.A.	0	0
Province of Québec	1229	0	0	0	0	0	648	23	162	0	0	2	0	0	162	7	162	0	N.A.	N.A.	162	13
P.H.O.L. - Ottawa	8	0	0	0	0	0	8	0	7	0	0	0	0	0	7	0	7	0	7	2	7	0
CHEO - Ottawa	64	0	0	0	0	0	64	0	21	0	0	0	0	0	21	0	21	0	21	1	21	1
P.H.O.L. - Kingston	12	0	0	0	0	0	12	0	8	0	0	0	0	0	8	0	8	0	8	0	8	0
UHN / Mount Sinai Hospital	478	0	0	0	0	0	478	0	61	0	0	0	0	0	61	1	61	0	61	1	61	0
P.H.O.L. - Toronto	145	0	0	0	0	0	145	0	122	0	0	0	0	0	122	0	122	0	122	0	122	0
Sick Kids Hospital - Toronto	N.A.	N.A.	N.A.	N.A.	N.A.	N.A.	N.A.	N.A.	N.A.	N.A.	N.A.	N.A.	N.A.	N.A.	N.A.	N.A.	N.A.	N.A.	N.A.	N.A.	N.A.	N.A.
Sunnybrook & Women's College HSC	N.A.	N.A.	N.A.	N.A.	N.A.	N.A.	N.A.	N.A.	N.A.	N.A.	N.A.	N.A.	N.A.	N.A.	N.A.	N.A.	N.A.	N.A.	N.A.	N.A.	N.A.	N.A.
P.H.O.L. - Sault Ste. Marie	4	0	0	0	0	0	4	0	0	0	0	0	0	0	0	0	0	0	0	0	0	0
P.H.O.L. - Timmins	1	0	0	0	0	0	1	0	1	0	0	0	0	0	1	0	1	0	1	0	1	0
St. Joseph's - London	N.A.	N.A.	N.A.	N.A.	N.A.	N.A.	N.A.	N.A.	N.A.	N.A.	N.A.	N.A.	N.A.	N.A.	N.A.	N.A.	N.A.	N.A.	N.A.	N.A.	N.A.	N.A.
P.H.O.L. - London	17	0	0	0	0	0	17	0	9	0	0	0	0	0	9	0	8	0	9	0	8	0
P.H.O.L. - Orillia	1	0	0	0	0	0	1	0	1	0	0	0	0	0	1	0	1	0	1	0	1	0
P.H.O.L. - Thunder Bay	2	0	0	0	0	0	2	0	2	0	0	0	0	0	2	0	2	0	2	1	2	0
P.H.O.L. - Sudbury	10	0	0	0	0	0	10	0	3	0	0	0	0	1	3	0	3	0	3	2	3	0
P.H.O.L. - Hamilton	12	0	0	0	0	0	12	0	7	0	0	0	0	0	7	0	7	0	7	0	7	0
P.H.O.L. - Peterborough	12	0	0	0	0	0	12	0	11	0	0	0	0	0	11	0	11	0	11	0	11	0
St. Joseph's - Hamilton	N.A.	N.A.	N.A.	N.A.	N.A.	N.A.	N.A.	N.A.	N.A.	N.A.	N.A.	N.A.	N.A.	N.A.	N.A.	N.A.	N.A.	N.A.	N.A.	N.A.	N.A.	N.A.
Province of Ontario	766	0	0	0	0	0	766	0	253	0	0	0	0	1	253	1	252	0	253	7	252	1
Province of Manitoba	2358	0	0	0	0	0	2358	0	11	0	0	0	0	0	11	1	86	0	11	8	86	0
Province of Saskatchewan	1335	0	0	0	0	0	973	0	49	0	0	0	0	0	49	0	49	0	49	6	49	1
Province of Alberta	2396	0	0	0	0	0	577	0	577	0	0	0	1	0	577	6	577	0	577	65	577	2
Prairies	6089	0	0	0	0	0	3908	0	637	0	0	0	1	0	637	7	712	0	637	79	712	3
British Columbia	2155	0	0	0	0	0	2135	0	396	0	0	0	0	0	396	2	396	1	390	26	383	0
Yukon	82	0	0	0	0	0	82	0	N.A.	N.A.	N.A.	N.A.	N.A.	N.A.	N.A.	N.A.	N.A.	N.A.	N.A.	N.A.	N.A.	N.A.
Northwest Territories	6	0	0	0	0	0	5	0	5	0	0	0	0	0	5	0	5	0	5	0	5	0
Nunavut	1	0	0	0	0	0	0	0	0	0	0	0	0	0	0	0	0	0	0	0	0	0
Territories	89	0	0	0	0	0	87	0	5	0	0	0	0	0	5	0	5	0	5	0	5	0
CANADA	12427	0	0	0	0	0	9510	23	2093	0	0	2	1	1	2093	20	2167	1	1925	148	1871	17

The data in the RVDSS report represent surveillance data available at the time of writing. Missing data are denoted by N.A.

Specimens from Yukon (YT), Northwest Territories (NT) and Nunavut (NU) are sent to reference laboratories in other provinces and reported results reflect specimens identified as originating from YT, NT or NU.

Results from British Columbia comprise of specimens from the following sites: BC Children's and Women's Hospital, Fraser Health Medical Microbiology Laboratory, Island Health, Providence Health Care, Powell River Hospital, St. Paul's Hospital, Vancouver General Hospital, Victoria General Hospital, BCCDC Public Health Laboratory, Interior Health Authority sites and Northern Health Authority sites.

Delays in the reporting of data may cause data to change retrospectively.

Influenza co-detections may cause the sum of A(H1N1)pdm09, A(H3), and A(UnS) positive results to exceed the sum of Total Flu A Positive results.

Table 2: Respiratory Virus Detections/Isolations for the period August 23, 2020 - May 8, 2021 (Reporting Weeks 202035-202118)

Reporting Laboratory	Flu Tested	A(H1N1)pdm09 Positive	A(H3) Positive	A(UnS) Positive	Total Flu A Positive	Total Flu B Positive	RSV Tested	RSV Positive	PIV Tested	PIV 1 Positive	PIV 2 Positive	PIV 3 Positive	PIV 4 Positive	Other PIV Positive	Adeno Tested	Adeno Positive	hMPV Tested	hMPV Positive	Entero/Rhino Tested	Entero/Rhino Positive	Coron Tested	Coron Positive
Newfoundland	11546	0	0	0	0	0	11546	10	11546	1	0	2	0	0	11559	52	10959	2	11546	2039	N.A.	N.A.
Prince Edward Island	3632	0	0	0	0	0	3632	4	3628	3	0	0	1	0	3628	35	3628	0	3628	410	3628	1
Nova Scotia	7744	0	0	0	0	0	7747	0	747	0	10	0	1	0	747	10	747	1	747	77	774	0
New Brunswick	53476	0	0	0	0	1	19680	0	1332	0	0	0	0	0	1323	9	1323	0	1323	53	1278	0
Atlantic	76398	0	0	0	0	1	42605	14	17253	4	10	2	2	0	17257	106	16657	3	17244	2579	5680	1
Région Nord-Est	5625	0	0	0	0	0	1058	1	4	0	0	0	0	0	4	1	4	0	N.A.	N.A.	4	0
Québec-Chaudière-Appalaches	742	0	0	1	1	0	826	0	622	0	0	0	0	0	624	35	619	0	N.A.	N.A.	602	27
Centre-du-Québec	880	0	0	0	0	0	888	1	334	0	0	1	0	0	332	19	334	0	N.A.	N.A.	331	11
Montréal-Laval	8204	0	0	0	0	0	7248	122	3965	2	0	4	0	0	4019	139	3949	2	N.A.	N.A.	3949	79
Ouest du Québec	2042	0	0	0	0	0	1985	0	0	0	0	0	0	0	0	0	0	0	N.A.	N.A.	0	0
Montérégie	966	0	0	0	0	0	966	1	0	0	0	0	0	0	0	0	0	0	N.A.	N.A.	0	0
Province of Québec	18459	0	0	1	1	0	12971	125	4925	2	0	5	0	0	4979	194	4906	2	N.A.	N.A.	4886	117
P.H.O.L. - Ottawa	544	0	0	0	0	0	544	1	449	0	0	0	0	0	449	0	448	0	449	24	448	1
CHEO - Ottawa	4803	0	0	1	1	1	4400	5	772	0	0	0	0	0	772	12	772	1	772	86	772	2
P.H.O.L. - Kingston	835	0	0	1	1	0	835	0	545	0	0	0	0	0	545	4	539	0	545	106	539	0
UHN / Mount Sinai Hospital	12820	2	0	2	4	1	12751	6	10252	3	2	3	8	0	8626	10	10212	8	10009	99	8048	6
P.H.O.L. - Toronto	6112	0	0	0	0	0	6109	2	5254	0	0	0	0	3	5255	15	5253	1	5254	151	5253	5
Sick Kids Hospital - Toronto	1166	0	0	0	0	0	0	0	1166	0	0	0	0	0	1166	17	1166	0	1166	114	1166	1
Sunnybrook & Women's College HSC	0	0	0	0	0	0	0	0	0	0	0	0	0	0	0	0	0	0	0	0	0	0
P.H.O.L. - Sault Ste. Marie	164	0	0	2	2	0	162	0	97	0	0	0	0	0	97	0	97	0	97	6	97	0
P.H.O.L. - Timmins	618	0	0	0	0	0	618	0	166	0	0	0	0	0	166	0	165	0	166	31	165	0
St. Joseph's - London	218	0	0	0	0	0	218	0	55	0	0	0	0	0	55	0	55	0	91	8	36	0
P.H.O.L. - London	1873	1	0	5	6	2	1863	0	1274	0	0	0	0	2	1274	2	1268	0	1274	127	1268	3
P.H.O.L. - Orillia	389	0	0	1	1	0	387	0	193	0	0	0	0	0	193	1	193	0	193	12	193	0
P.H.O.L. - Thunder Bay	401	0	0	0	0	0	401	0	387	0	0	0	0	0	388	3	387	0	387	138	387	0
P.H.O.L. - Sudbury	474	0	0	0	0	0	472	0	328	0	0	0	0	1	328	2	328	0	328	30	328	0
P.H.O.L. - Hamilton	1478	0	0	0	0	0	1423	1	1187	0	0	0	0	0	1187	2	1187	0	1187	98	1187	0
P.H.O.L. - Peterborough	495	0	0	1	1	0	449	0	344	0	0	0	0	0	344	0	343	0	344	24	343	0
St. Joseph's - Hamilton	8756	0	0	0	0	0	8756	2	8756	0	0	1	0	0	8756	19	8756	0	8756	436	0	0
Province of Ontario	41146	3	0	13	16	4	39388	17	31225	3	2	4	8	6	29601	87	31169	10	31018	1490	20230	18
Manitoba	49897	0	0	2	2	1	49887	68	2737	0	1	1	0	0	2737	19	3245	1	2737	161	3245	4
Province of Saskatchewan	170093	0	0	1	1	0	25240	4	1765	0	0	1	1	0	1765	12	1765	4	1765	181	1765	9
Province of Alberta	122766	4	0	6	10	0	76401	0	76401	2	19	3	8	0	76401	148	76401	11	76401	6441	76401	28
Prairies	342756	4	0	9	13	1	151528	72	80903	2	20	5	9	0	80903	179	81411	16	80903	6783	81411	41
British Columbia	83010	3	8	1	10	8	82524	6	17056	1	4	1	11	5	17602	95	17452	60	17249	1425	13135	19
Yukon	4918	0	0	8	8	7	4855	4	N.A.	N.A.	N.A.	N.A.	N.A.	N.A.	N.A.	N.A.	N.A.	N.A.	N.A.	N.A.	N.A.	N.A.
Northwest Territories	1154	0	0	0	0	0	1111	0	1111	0	0	0	1	0	1111	12	1111	1	1111	320	1111	1
Nunavut	1120	0	0	0	0	0	1099	0	1099	3	1	0	0	0	1099	25	1099	5	1099	281	189	0
Territories	7192	0	0	8	8	7	7065	4	2210	3	1	0	1	0	2210	37	2210	6	2210	601	1300	1
CANADA	568961	10	8	32	48	21	336081	238	153572	15	37	17	31	11	152552	698	153805	97	148624	12878	126642	197

The data in the RVDSS report represent surveillance data available at the time of writing. Missing data are denoted by N.A.

Specimens from YT, NT and NU are sent to reference laboratories in other provinces and reported results reflect specimens identified as originating from YT, NT or NU.

Results from British Columbia comprise of specimens from the following sites: BC Children's and Women's Hospital, Children's and Women's Hospital Laboratory, Fraser Health Medical Microbiology Laboratory, Island Health, Providence Health Care, Powell River Hospital, St. Paul's Hospital, Vancouver General Hospital, Victoria General Hospital, BCCDC Public Health Laboratory, Interior Health Authority sites and Northern Health Authority sites.

Delays in the reporting of data may cause data to change retrospectively.

Due to reporting delays, the sum of weekly report totals do not add up to cumulative totals.

Influenza co-detections may cause the sum of A(H1N1)pdm09, A(H3), and A(UnS) positive results to exceed the sum of Total Flu A Positive results.

Figure 1: Number positive laboratory tests for other respiratory viruses by report week, Canada, 2020-21

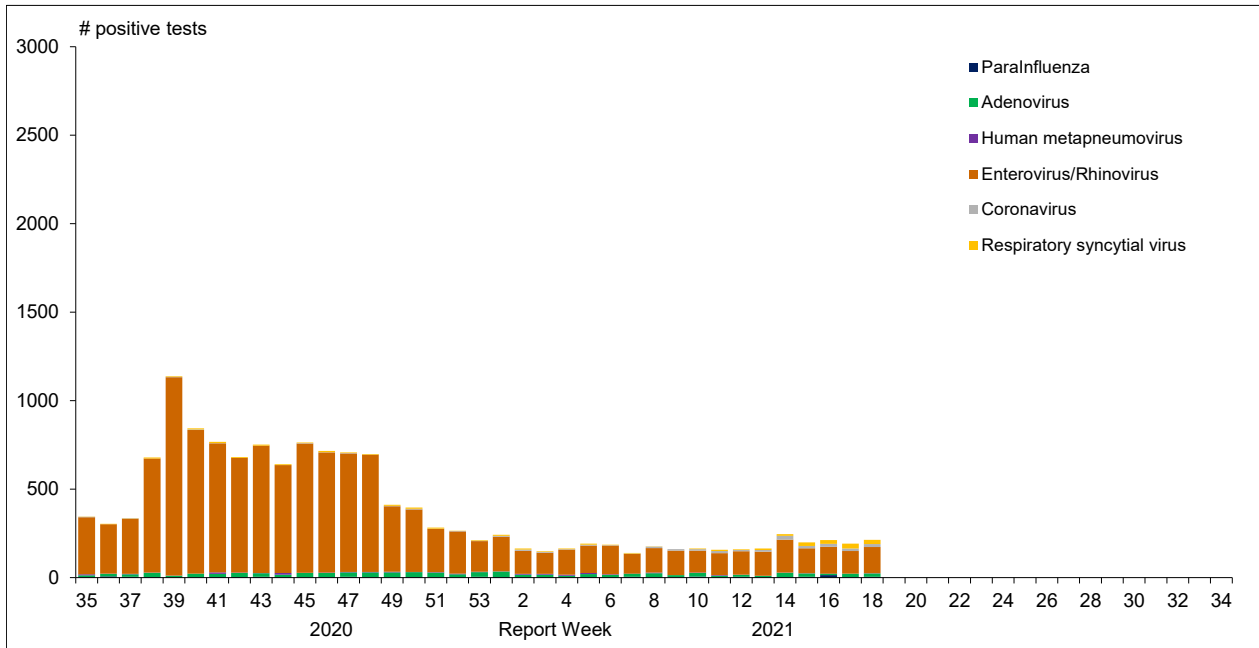


Figure 2 : Positive Influenza Tests (%) in Canada by Region by Week of Report

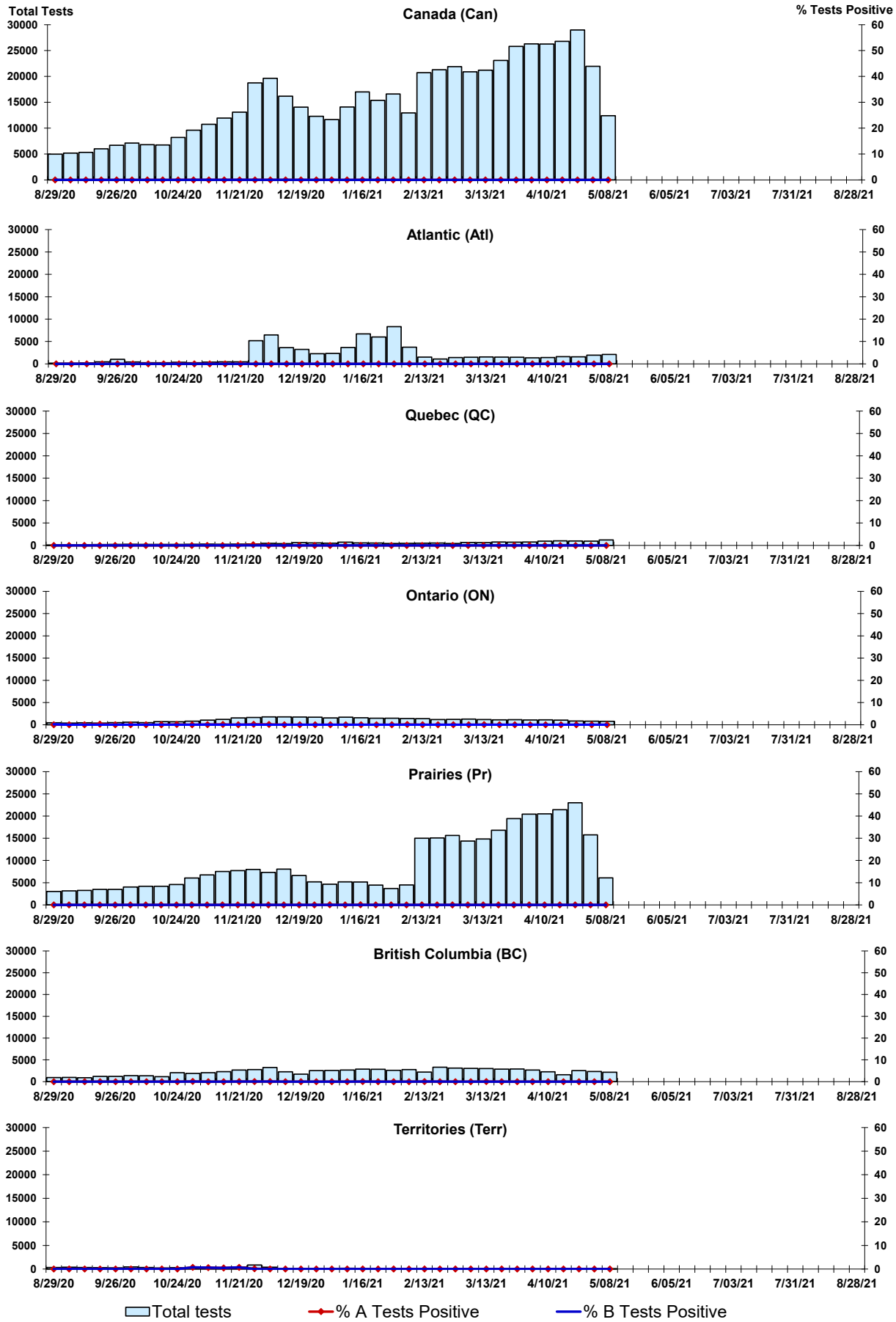


Figure 3: Positive Respiratory syncytial virus (RSV) Tests (%) in Canada by Region by Week of Report

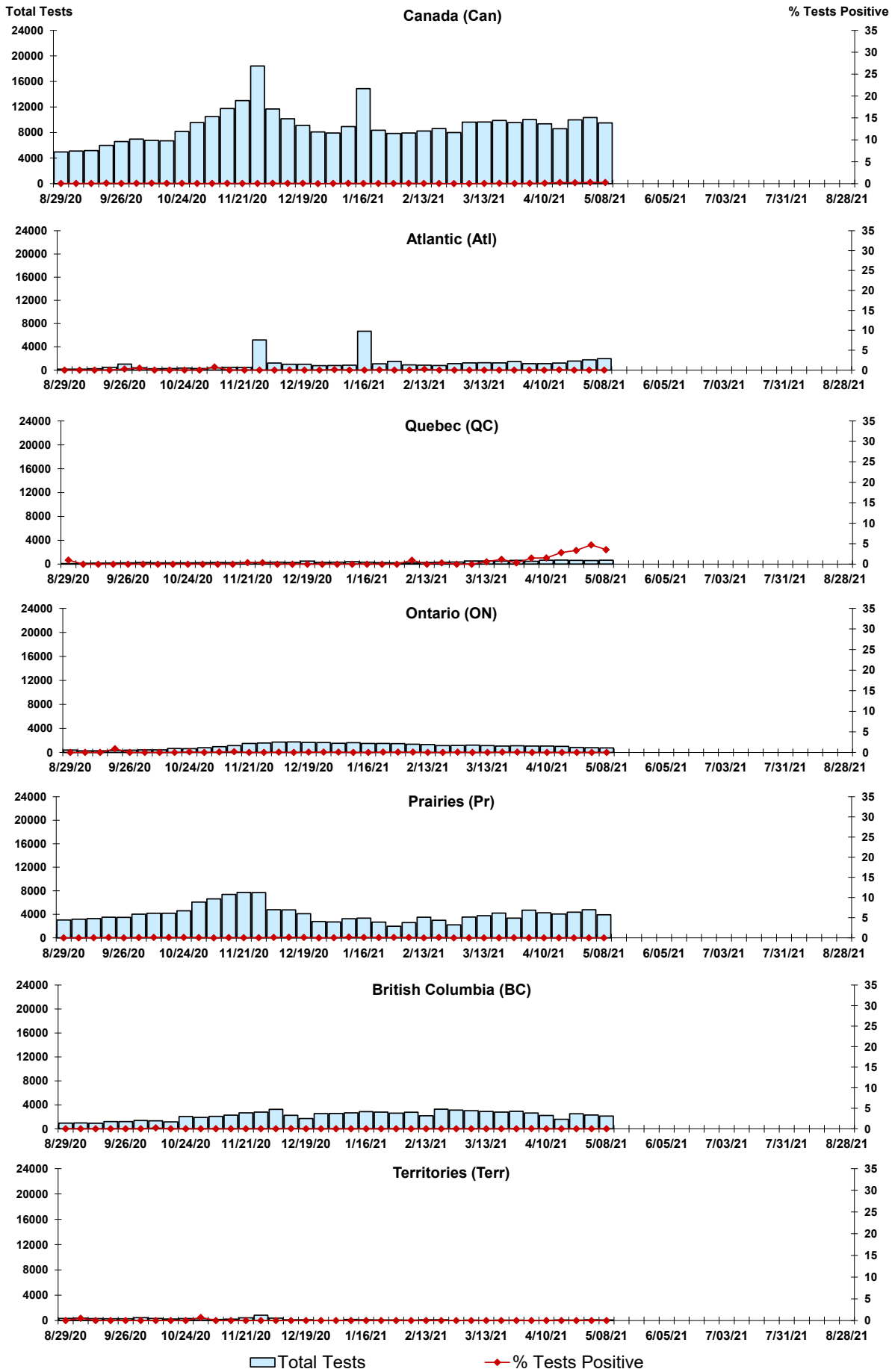
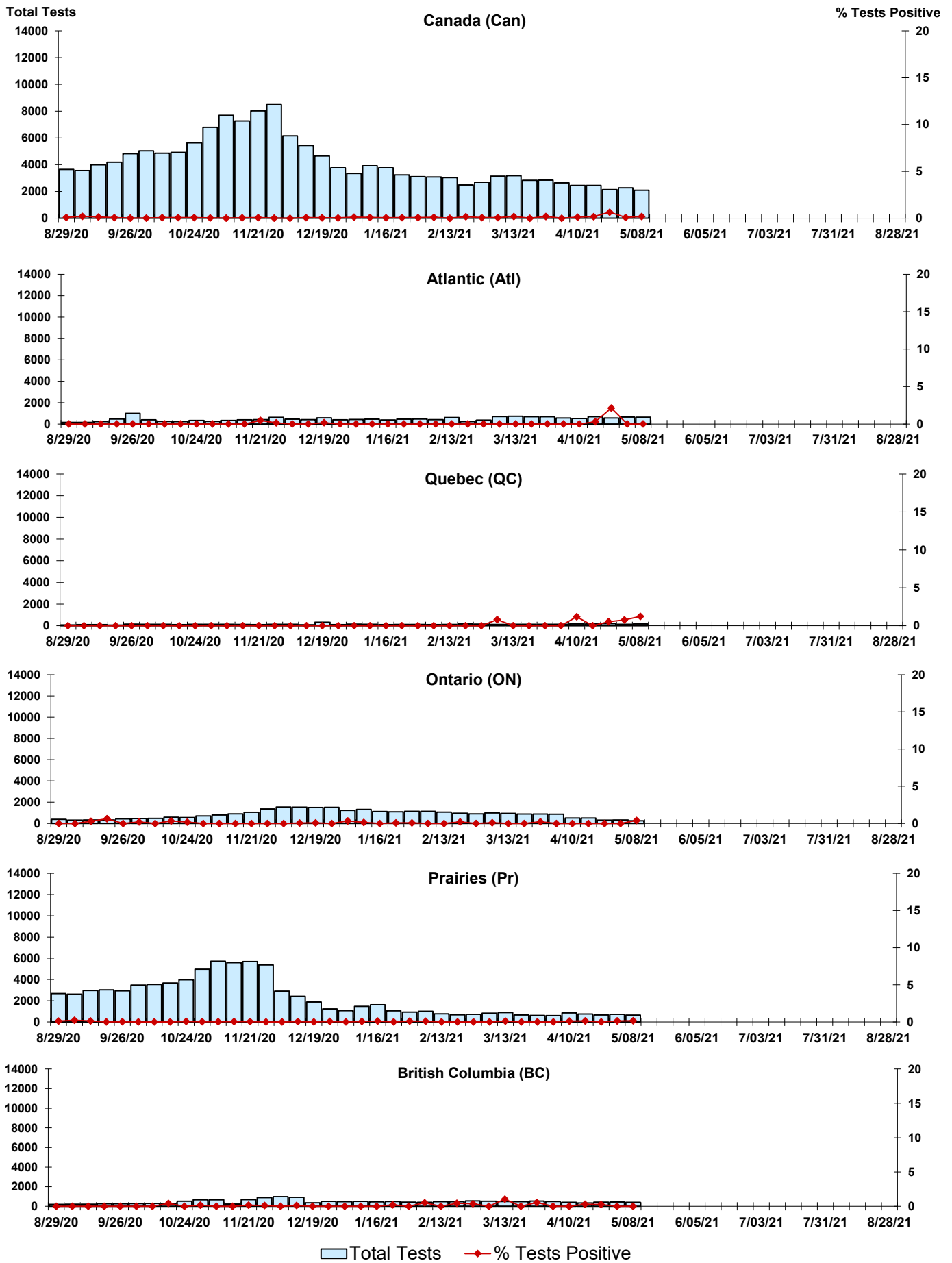


Figure 4: Positive Parainfluenza (PIV) Tests (%) in Canada by Region by Week of Report



Legend: Total Tests (light blue bar), % Tests Positive (red diamond)

Figure 5: Positive Adenovirus (adeno) Tests (%) in Canada by Region by Week of Report

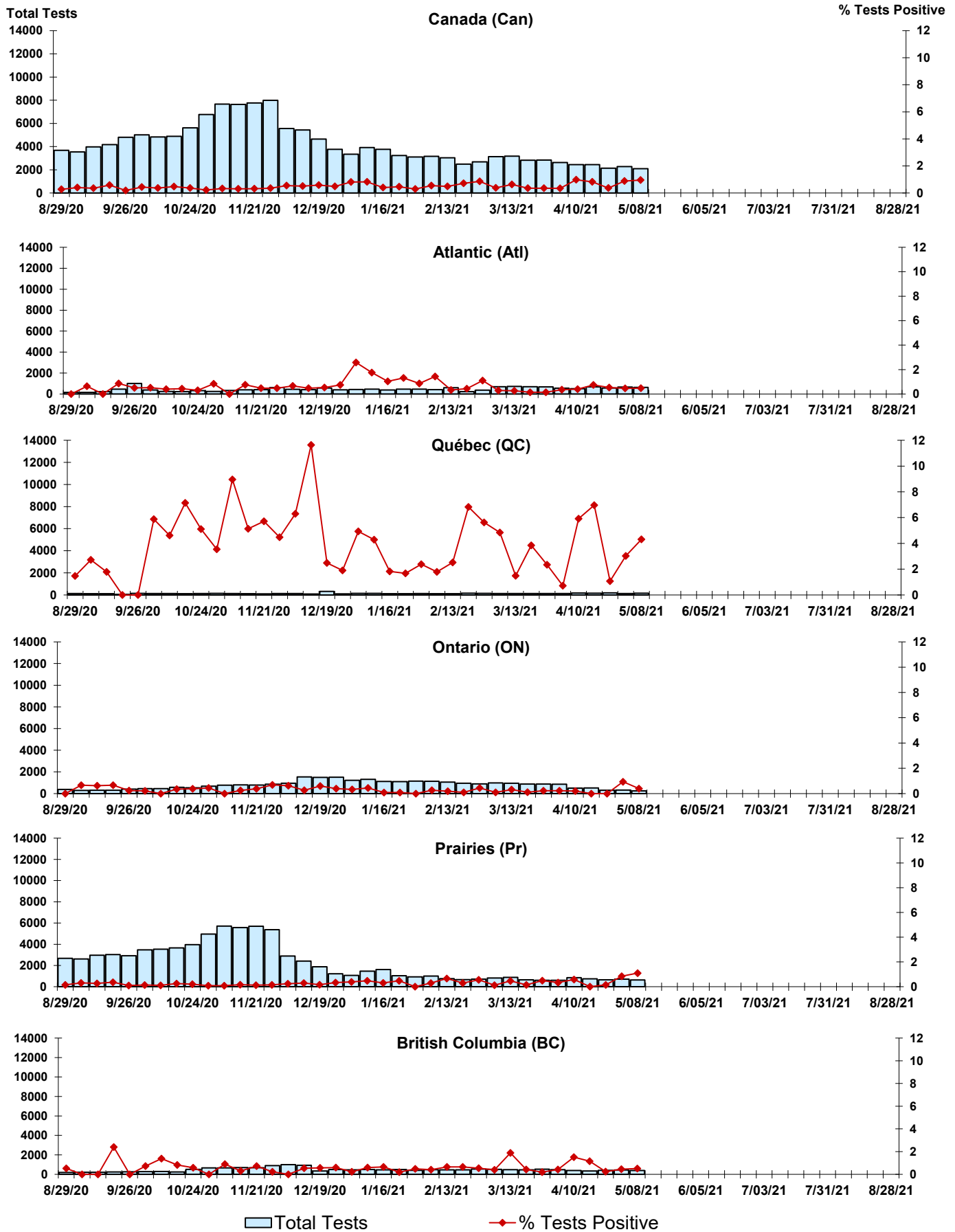
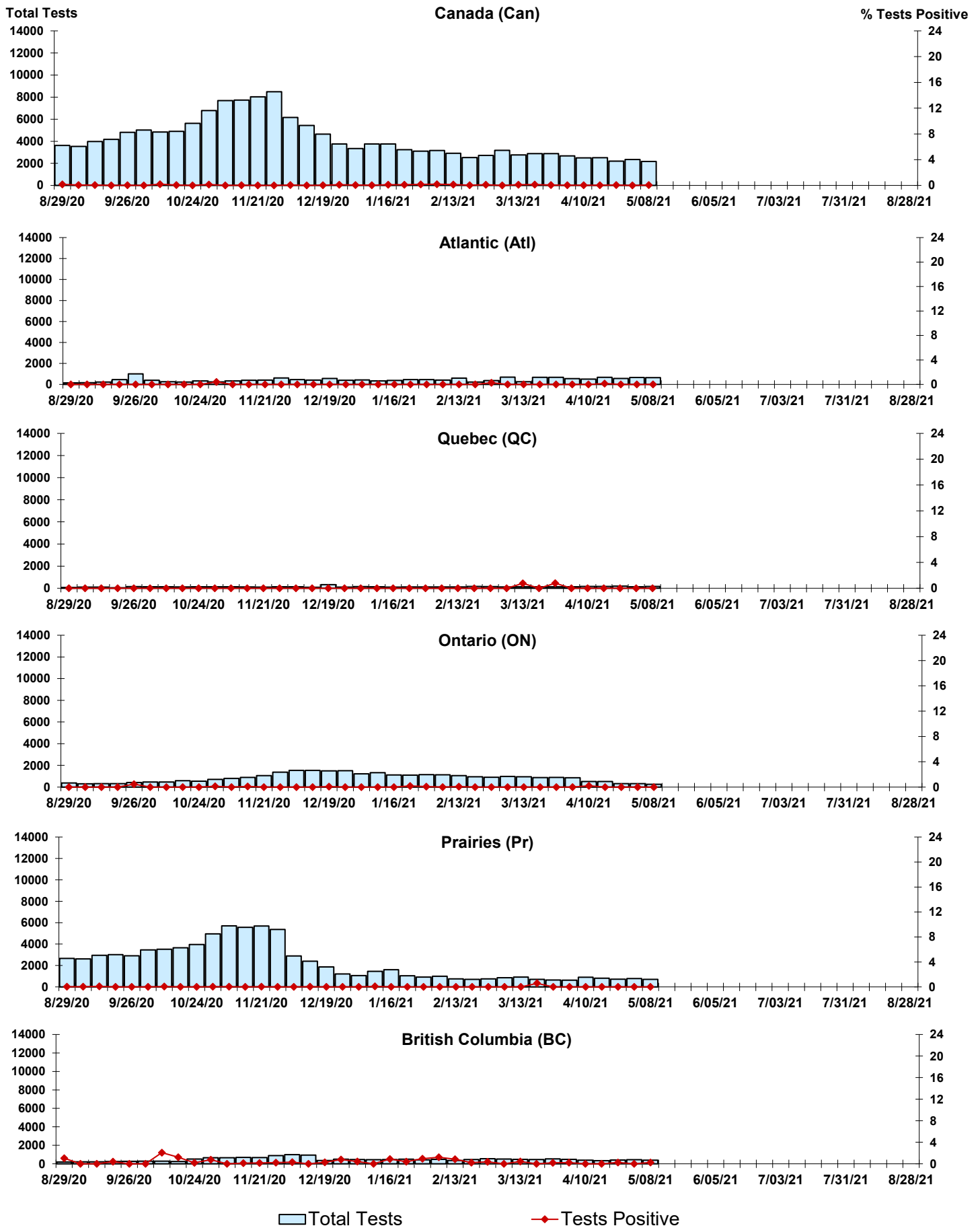


Figure 6: Positive human metapneumovirus (hMPV) Tests (%) in Canada by Region by Week of Report



Legend: Total Tests ◆ Tests Positive

Figure 7: Positive Enterovirus/Rhinovirus (entero/rhino) Tests (%) in Canada by Region by Week of Report

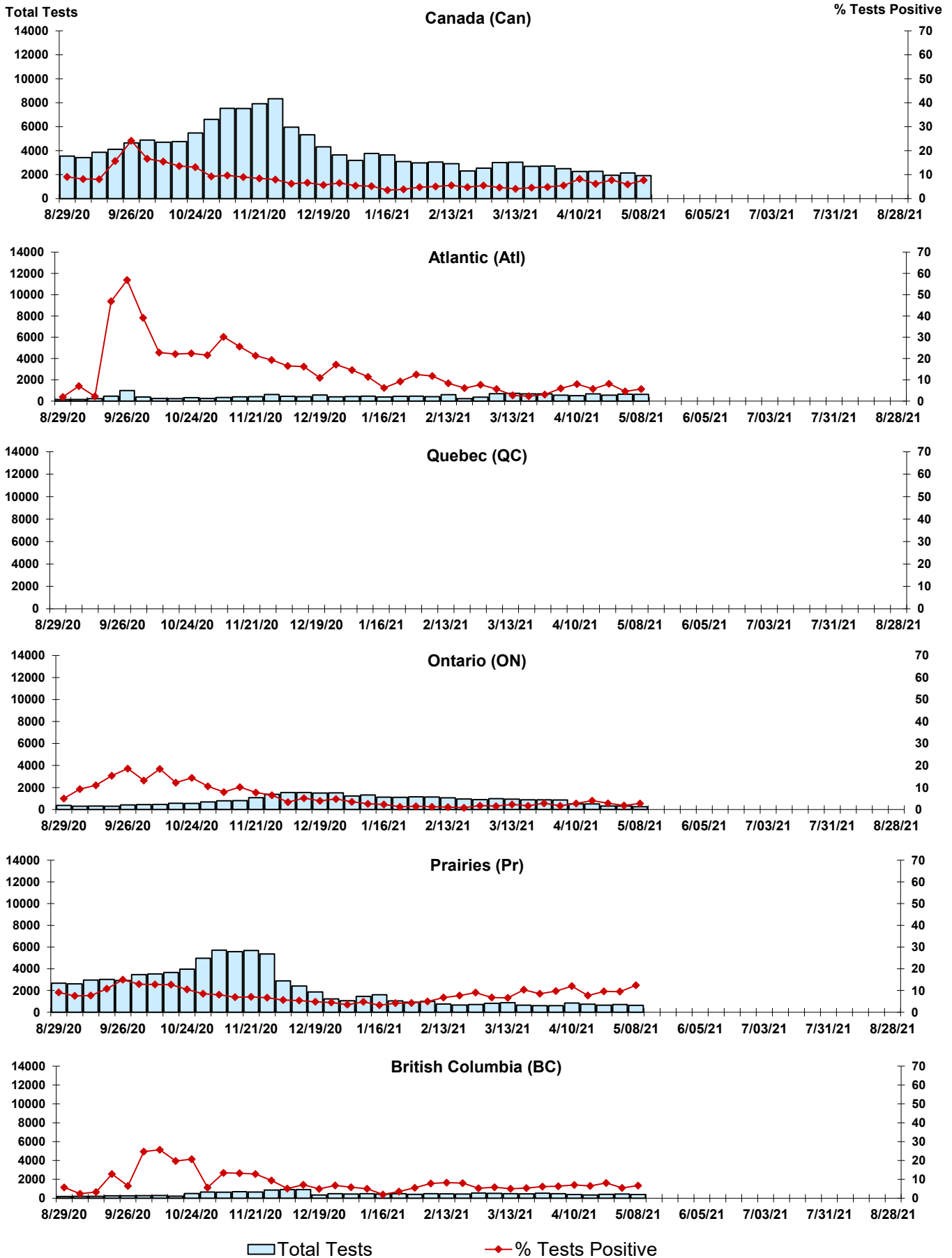
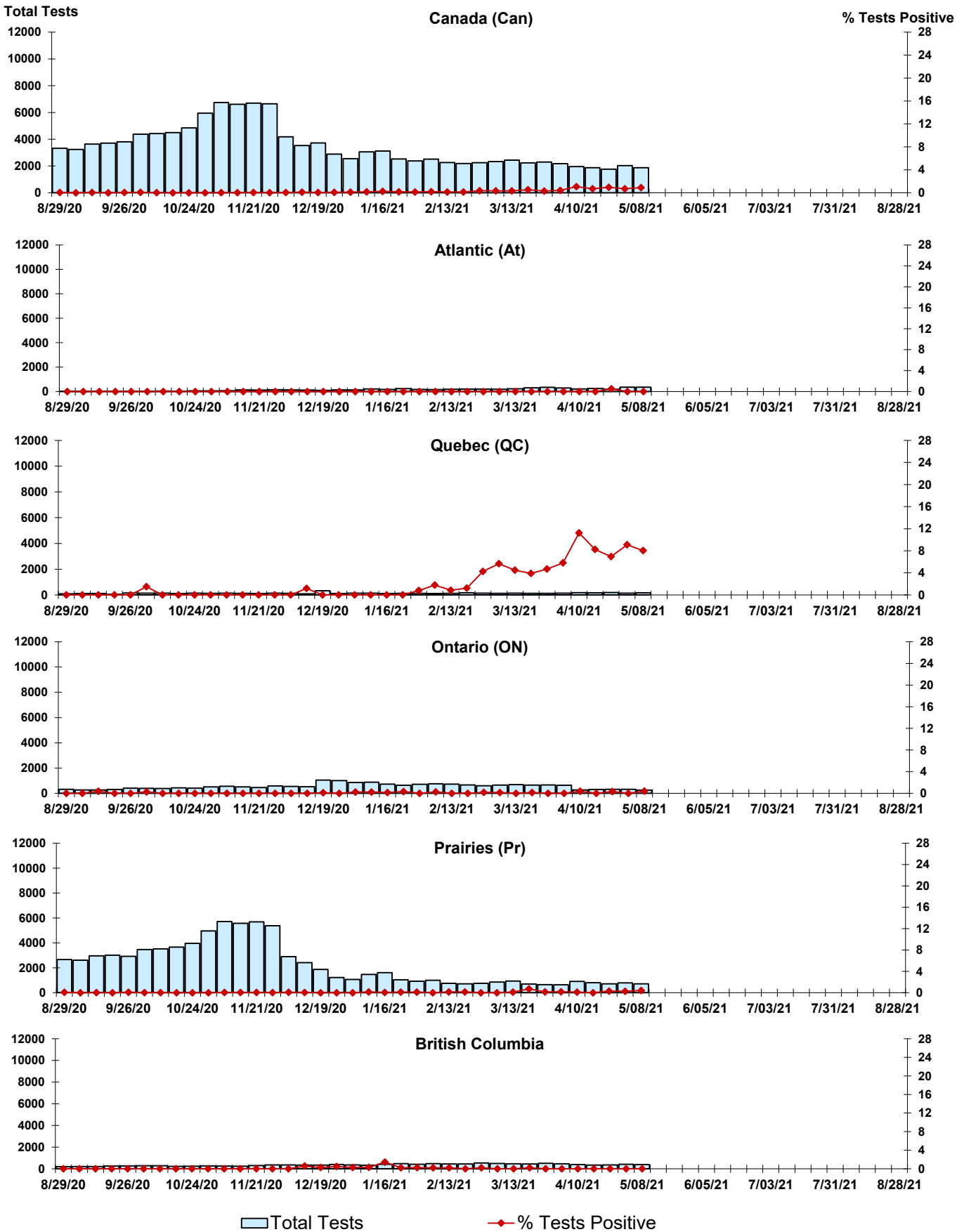


Figure 8: Positive Coronavirus (coron) Tests (%) in Canada by Region by Week of Report



Abbreviations:

A(H1N1)pdm09: Influenza A(H1N1)pdm09

A(H3): Influenza A(H3N2)

A (UnS): Influenza A (Unsubtyped)

Adeno: Adenovirus

CHEO: Children's Hospital of Eastern Ontario

Coron: Coronavirus

Enterovirus: Enterovirus

hMPV: human metapneumovirus

HSC: Health Sciences Centre

N.A.: Not Applicable

P.H.L.: Public Health Laboratory

P.H.O.L.: Public Health Ontario Laboratory

PIV: Parainfluenza

Rhino: Rhinovirus

RSV: Respiratory syncytial virus

UHN: University Health Network

Notes:

The data in the RVDSS report represent surveillance data available at the time of writing. Missing data are denoted by N.A.

Specimens from Yukon (YT), Northwest Territories (NT) and Nunavut (NU) are sent to reference laboratories in other provinces. Results reported for the Territories reflect the number of specimens that are identified as originating from YT, NT or NU.

Delays in the reporting of data may cause data to change retrospectively.

Due to reporting delays, the sum of weekly report totals do not add up to cumulative totals.