

Respiratory Virus Report, Week 20 - ending May 22, 2021

The Respiratory Virus Detection Surveillance System collects data from select laboratories across Canada on the number of tests performed and the number of tests positive for influenza and other respiratory viruses. Data are reported on a weekly basis year-round to the Centre for Immunization and Respiratory Infectious Diseases (CIRID), Public Health Agency of Canada. These data are also summarized in the weekly FluWatch report.

In this Respiratory Virus Report, the number of detections of coronavirus reflects only seasonal human coronaviruses, not the novel pandemic coronavirus (SARS-CoV2) that causes COVID-19. For information on COVID-19, see the [Coronavirus disease \(COVID-19\): Outbreak](#)

Table 1: Respiratory Virus Detections/Isolations for the week ending May 22, 2021 (Reporting Week 202120)

Reporting Laboratory	Flu Tested	A(H1N1)pdm09 Positive	A(H3) Positive	A(UnS) Positive	Total Flu A Positive	Total Flu B Positive	RSV Tested	RSV Positive	PIV Tested	PIV 1 Positive	PIV 2 Positive	PIV 3 Positive	PIV 4 Positive	Other PIV Positive	Adeno Tested	Adeno Positive	hMPV Tested	hMPV Positive	Entero/Rhino Tested	Entero/Rhino Positive	Coron Tested	Coron Positive
Newfoundland	272	0	0	0	0	0	272	0	272	0	0	1	0	0	271	0	272	0	272	28	N.A.	N.A.
Prince Edward Island	122	0	0	0	0	0	122	0	122	0	0	0	0	0	122	0	122	0	122	19	122	0
Nova Scotia	150	0	0	0	0	0	150	0	138	0	0	0	0	0	138	2	138	0	138	2	138	0
New Brunswick	145	0	0	0	0	0	98	0	0	0	0	0	0	0	0	0	0	0	0	0	0	0
Atlantic	689	0	0	0	0	0	642	0	532	0	0	1	0	0	531	2	532	0	532	49	260	0
Région Nord-Est	411	0	0	0	0	0	17	0	0	0	0	0	0	0	0	0	0	0	N.A.	N.A.	0	0
Québec-Chaudière-Appalaches	0	0	0	0	0	0	0	0	0	0	0	0	0	0	0	0	0	0	N.A.	N.A.	0	0
Centre-du-Québec	5	0	0	0	0	0	5	0	8	0	0	0	0	0	8	0	8	0	N.A.	N.A.	8	0
Montréal-Laval	398	0	0	0	0	0	398	14	104	0	0	3	0	0	104	8	104	0	N.A.	N.A.	104	14
Ouest du Québec	115	0	0	0	0	0	115	0	0	0	0	0	0	0	0	0	0	0	N.A.	N.A.	0	0
Montérégie	111	0	0	0	0	0	111	0	0	0	0	0	0	0	0	0	0	0	N.A.	N.A.	0	0
Province of Québec	1040	0	0	0	0	0	646	14	112	0	0	3	0	0	112	8	112	0	N.A.	N.A.	112	14
P.H.O.L. - Ottawa	12	0	0	0	0	0	12	0	12	0	0	0	0	0	12	0	12	0	12	0	12	0
CHEO - Ottawa	65	0	0	0	0	0	65	0	21	0	0	0	0	0	21	1	21	0	21	1	21	1
P.H.O.L. - Kingston	8	0	0	0	0	0	8	0	5	0	0	0	0	0	5	0	5	0	5	0	5	0
UHN / Mount Sinai Hospital	387	0	0	0	0	0	387	0	77	0	0	0	0	0	77	0	77	0	77	1	77	0
P.H.O.L. - Toronto	120	0	0	0	0	0	120	1	96	0	0	0	0	0	96	0	96	0	96	4	96	0
Sick Kids Hospital - Toronto	N.A.	N.A.	N.A.	N.A.	N.A.	N.A.	N.A.	N.A.	N.A.	N.A.	N.A.	N.A.	N.A.	N.A.	N.A.	N.A.	N.A.	N.A.	N.A.	N.A.	N.A.	N.A.
Sunnybrook & Women's College HSC	N.A.	N.A.	N.A.	N.A.	N.A.	N.A.	N.A.	N.A.	N.A.	N.A.	N.A.	N.A.	N.A.	N.A.	N.A.	N.A.	N.A.	N.A.	N.A.	N.A.	N.A.	N.A.
P.H.O.L. - Sault Ste. Marie	6	0	0	0	0	0	6	0	0	0	0	0	0	0	0	0	0	0	0	0	0	0
P.H.O.L. - Timmins	2	0	0	0	0	0	2	0	1	0	0	0	0	0	1	0	1	0	1	0	1	0
St. Joseph's - London	N.A.	N.A.	N.A.	N.A.	N.A.	N.A.	N.A.	N.A.	N.A.	N.A.	N.A.	N.A.	N.A.	N.A.	N.A.	N.A.	N.A.	N.A.	N.A.	N.A.	N.A.	N.A.
P.H.O.L. - London	14	0	0	0	0	0	14	0	6	0	0	0	0	0	6	0	6	0	6	0	6	0
P.H.O.L. - Orillia	2	0	0	0	0	0	2	0	2	0	0	0	0	0	2	0	2	0	2	0	2	0
P.H.O.L. - Thunder Bay	4	0	0	0	0	0	4	0	2	0	0	0	0	0	2	0	2	0	2	0	2	0
P.H.O.L. - Sudbury	9	0	0	0	0	0	9	0	2	0	0	0	0	0	2	0	2	0	2	0	2	0
P.H.O.L. - Hamilton	11	0	0	0	0	0	11	0	8	0	0	0	0	0	8	0	8	0	8	0	8	0
P.H.O.L. - Peterborough	8	0	0	0	0	0	8	0	8	0	0	0	0	0	8	0	8	0	8	0	8	0
St. Joseph's - Hamilton	161	0	0	0	0	0	161	0	161	0	0	0	0	0	161	1	161	0	161	1	0	0
Province of Ontario	809	0	0	0	0	0	809	1	401	0	0	0	0	0	401	2	401	0	401	7	240	1
Province of Manitoba	1957	0	0	1	1	0	1957	0	20	0	0	0	0	0	20	0	85	0	20	1	85	1
Province of Saskatchewan	291	0	0	0	0	0	285	0	50	0	0	0	0	0	50	0	50	0	50	3	50	1
Province of Alberta	1454	0	0	0	0	0	449	0	449	0	0	1	0	0	449	2	449	0	449	32	449	1
Prairies	3702	0	0	1	1	0	2691	0	519	0	0	1	0	0	519	2	584	0	519	36	584	3
British Columbia	1101	0	0	0	0	0	1100	0	382	0	0	0	0	0	382	7	359	1	377	22	373	1
Yukon	54	0	0	0	0	0	54	0	N.A.	N.A.	N.A.	N.A.	N.A.	N.A.	N.A.	N.A.	N.A.	N.A.	N.A.	N.A.	N.A.	N.A.
Northwest Territories	4	0	0	0	0	0	3	0	3	0	0	0	0	0	3	0	3	0	3	1	3	0
Nunavut	1	0	0	0	0	0	0	0	0	0	0	0	0	0	0	0	0	0	0	0	0	0
Territories	59	0	0	0	0	0	57	0	3	0	0	0	0	0	3	0	3	0	3	1	3	0
CANADA	7400	0	0	1	1	0	5945	15	1949	0	0	5	0	0	1948	21	1991	1	1832	115	1572	19

The data in the RVSS report represent surveillance data available at the time of writing. Missing data are denoted by N.A.

Specimens from Yukon (YT), Northwest Territories (NT) and Nunavut (NU) are sent to reference laboratories in other provinces and reported results reflect specimens identified as originating from YT, NT or NU.

Results from British Columbia comprise of specimens from the following sites: BC Children's and Women's Hospital, Fraser Health Medical Microbiology Laboratory, Island Health, Providence Health Care, Powell River Hospital, St. Paul's Hospital, Vancouver General Hospital, Victoria General Hospital, BCCDC Public Health Laboratory, Interior Health Authority sites and Northern Health Authority sites.

Delays in the reporting of data may cause data to change retrospectively.

Influenza co-detections may cause the sum of A(H1N1)pdm09, A(H3), and A(UnS) positive results to exceed the sum of Total Flu A Positive results.

Table 2: Respiratory Virus Detections/Isolations for the period August 23, 2020 - May 22, 2021 (Reporting Weeks 202035-202120)

Reporting Laboratory	Flu Tested	A(H1N1)pdm09 Positive	A(H3) Positive	A(UnS) Positive	Total Flu A Positive	Total Flu B Positive	RSV Tested	RSV Positive	PIV Tested	PIV 1 Positive	PIV 2 Positive	PIV 3 Positive	PIV 4 Positive	Other PIV Positive	Adeno Tested	Adeno Positive	hMPV Tested	hMPV Positive	Entero/Rhino Tested	Entero/Rhino Positive	Coron Tested	Coron Positive
Newfoundland	12154	0	0	0	0	0	12154	10	12154	1	0	3	0	0	12167	52	11567	2	12154	2097	N.A.	N.A.
Prince Edward Island	3836	0	0	0	0	0	3836	4	3832	3	0	0	1	0	3832	36	3832	0	3832	450	3832	1
Nova Scotia	8145	0	0	0	0	0	8148	0	1022	0	10	0	1	0	1022	12	1022	1	1022	82	1049	0
New Brunswick	53863	0	0	0	1	1	19922	0	1345	0	0	0	0	0	1336	9	1336	0	1336	55	1291	0
Atlantic	77998	0	0	0	0	1	44060	14	18353	4	10	3	2	0	18357	109	17757	3	18344	2684	6172	1
Région Nord-Est	6377	0	0	0	0	0	1090	1	5	0	0	0	0	0	5	1	5	0	N.A.	N.A.	5	0
Québec-Chaudière-Appalaches	744	0	0	1	1	0	858	0	650	0	0	0	0	0	652	36	647	0	N.A.	N.A.	630	27
Centre-du-Québec	892	0	0	0	0	0	900	2	352	0	0	1	0	0	350	19	352	0	N.A.	N.A.	349	12
Montréal-Laval	8969	0	0	0	0	0	8014	149	4190	2	0	8	0	0	4244	152	4174	2	N.A.	N.A.	4174	102
Ouest du Québec	2286	0	0	0	0	0	2229	0	0	0	0	0	0	0	0	0	0	0	N.A.	N.A.	0	0
Montérégie	1174	0	0	0	0	0	1174	1	0	0	0	0	0	0	0	0	0	0	N.A.	N.A.	0	0
Province of Québec	20442	0	0	1	1	0	14265	153	5197	2	0	9	0	0	5251	208	5178	2	N.A.	N.A.	5158	141
P.H.O.L. - Ottawa	571	0	0	0	0	0	571	1	474	0	0	0	0	0	474	0	473	0	474	24	473	1
CHEO - Ottawa	4943	0	0	1	1	1	4540	5	821	0	0	0	0	0	821	13	821	1	821	89	821	3
P.H.O.L. - Kingston	853	0	0	1	1	0	853	0	560	0	0	0	0	0	560	4	554	0	560	108	554	0
UHN / Mount Sinai Hospital	13597	2	0	2	4	1	13528	6	10376	3	2	3	8	0	8750	10	10336	10	10133	101	8172	6
P.H.O.L. - Toronto	6357	0	0	0	0	0	6354	3	5466	0	0	0	0	3	5467	14	5465	1	5466	158	5465	5
Sick Kids Hospital - Toronto	1222	0	0	0	0	0	0	0	1222	0	0	0	0	0	1222	18	1222	0	1222	118	1222	1
Sunnybrook & Women's College HSC	0	0	0	0	0	0	0	0	0	0	0	0	0	0	0	0	0	0	0	0	0	0
P.H.O.L. - Sault Ste. Marie	174	0	0	2	2	0	172	0	98	0	0	0	0	0	98	0	98	0	98	6	98	0
P.H.O.L. - Timmins	621	0	0	0	0	0	621	0	167	0	0	0	0	0	167	0	166	0	167	31	166	0
St. Joseph's - London	218	0	0	0	0	0	218	0	55	0	0	0	0	0	55	0	55	0	91	8	36	0
P.H.O.L. - London	1902	1	0	5	6	2	1892	0	1288	0	0	0	0	2	1288	2	1282	0	1288	127	1282	3
P.H.O.L. - Orillia	393	0	0	1	1	0	391	0	197	0	0	0	0	0	197	1	197	0	197	12	197	0
P.H.O.L. - Thunder Bay	410	0	0	0	0	0	410	0	391	0	0	0	0	0	392	3	391	0	391	138	391	0
P.H.O.L. - Sudbury	486	0	0	0	0	0	484	0	330	0	0	0	0	1	330	2	330	0	330	30	330	0
P.H.O.L. - Hamilton	1501	0	0	0	0	0	1446	1	1203	0	0	0	0	0	1203	2	1203	0	1203	98	1203	0
P.H.O.L. - Peterborough	510	0	0	1	1	0	464	0	359	0	0	0	0	0	359	0	358	0	359	24	358	0
St. Joseph's - Hamilton	9536	0	0	0	0	0	9536	2	9536	0	0	1	0	0	9536	22	9536	0	9536	449	0	0
Province of Ontario	43294	3	0	13	16	4	41480	18	32543	3	2	4	8	6	30919	91	32487	12	32336	1521	20768	19
Manitoba	54173	0	0	3	3	2	54163	68	2768	0	1	1	0	0	2768	19	3423	1	2768	165	3423	6
Province of Saskatchewan	171427	0	0	1	1	0	26568	4	1858	0	0	1	1	0	1858	14	1858	4	1858	187	1858	11
Province of Alberta	126306	5	0	6	11	0	77435	0	77435	2	19	4	8	0	77435	153	77435	11	77435	6534	77435	30
Prairies	351906	5	0	10	15	2	158166	72	82061	2	20	6	9	0	82061	186	82716	16	82061	6886	82716	47
British Columbia	85755	3	8	1	10	8	85256	6	17850	1	4	1	12	5	18396	105	18223	62	18034	1473	13911	20
Yukon	5057	0	0	8	8	7	4991	4	N.A.	N.A.	N.A.	N.A.	N.A.	N.A.	N.A.	N.A.	N.A.	N.A.	N.A.	N.A.	N.A.	N.A.
Northwest Territories	1171	0	0	0	0	0	1124	0	1124	0	0	0	1	0	1124	12	1124	1	1124	323	1124	1
Nunavut	1124	0	0	0	0	0	1101	0	1101	3	1	0	0	0	1101	25	1101	5	1101	282	191	0
Territories	7352	0	0	8	8	7	7216	4	2225	3	1	0	1	0	2225	37	2225	6	2225	605	1315	1
CANADA	586747	11	8	33	50	22	350443	267	158229	15	37	23	32	11	157209	736	158586	101	153000	13169	130040	229

The data in the RVDSS report represent surveillance data available at the time of writing. Missing data are denoted by N.A.

Specimens from YT, NT and NU are sent to reference laboratories in other provinces and reported results reflect specimens identified as originating from YT, NT or NU.

Results from British Columbia comprise of specimens from the following sites: BC Children's and Women's Hospital, Children's and Women's Hospital Laboratory, Fraser Health Medical Microbiology Laboratory, Island Health, Providence Health Care, Powell River Hospital, St. Paul's Hospital, Vancouver General Hospital, Victoria General Hospital, BCCDC Public Health Laboratory, Interior Health Authority sites and Northern Health Authority sites.

Delays in the reporting of data may cause data to change retrospectively.

Due to reporting delays, the sum of weekly report totals do not add up to cumulative totals.

Influenza co-detections may cause the sum of A(H1N1)pdm09, A(H3), and A(UnS) positive results to exceed the sum of Total Flu A Positive results.

Figure 1: Number positive laboratory tests for other respiratory viruses by report week, Canada, 2020-21

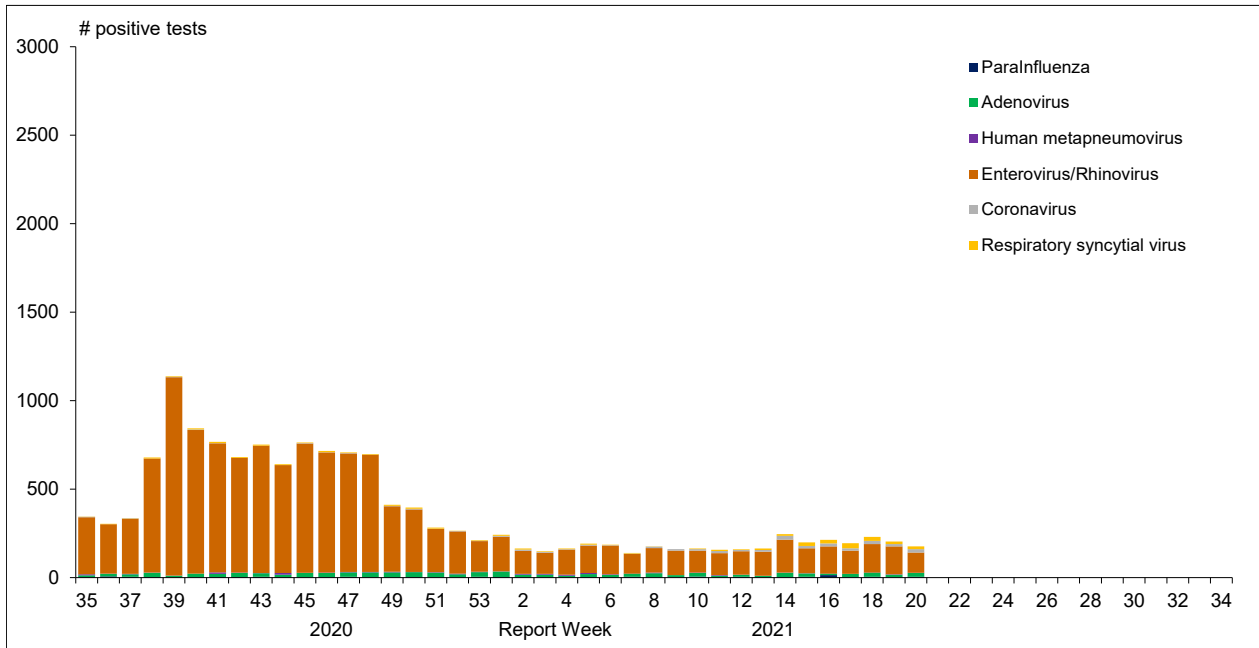


Figure 2 : Positive Influenza Tests (%) in Canada by Region by Week of Report

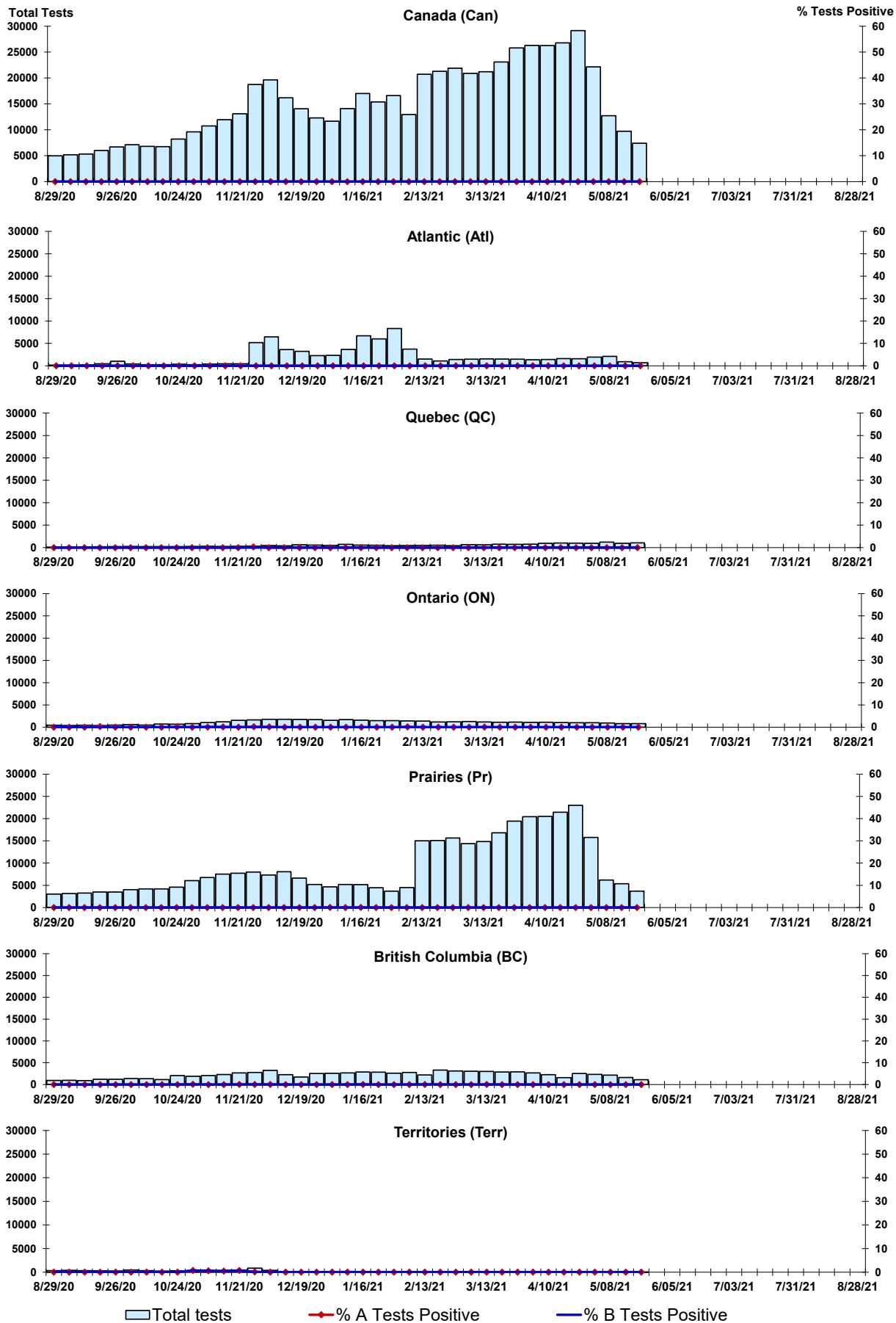


Figure 3: Positive Respiratory syncytial virus (RSV) Tests (%) in Canada by Region by Week of Report

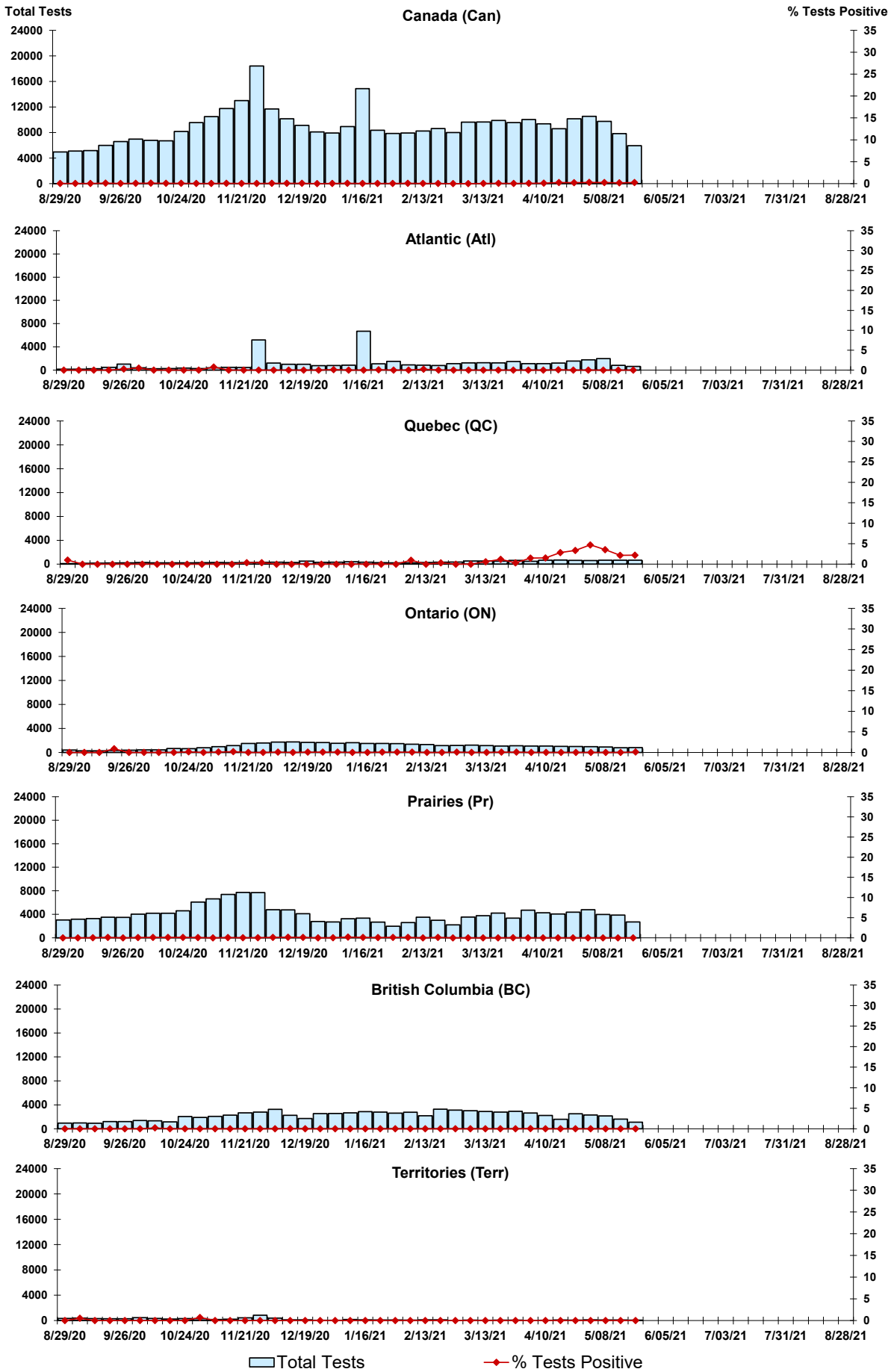


Figure 4: Positive Parainfluenza (PIV) Tests (%) in Canada by Region by Week of Report

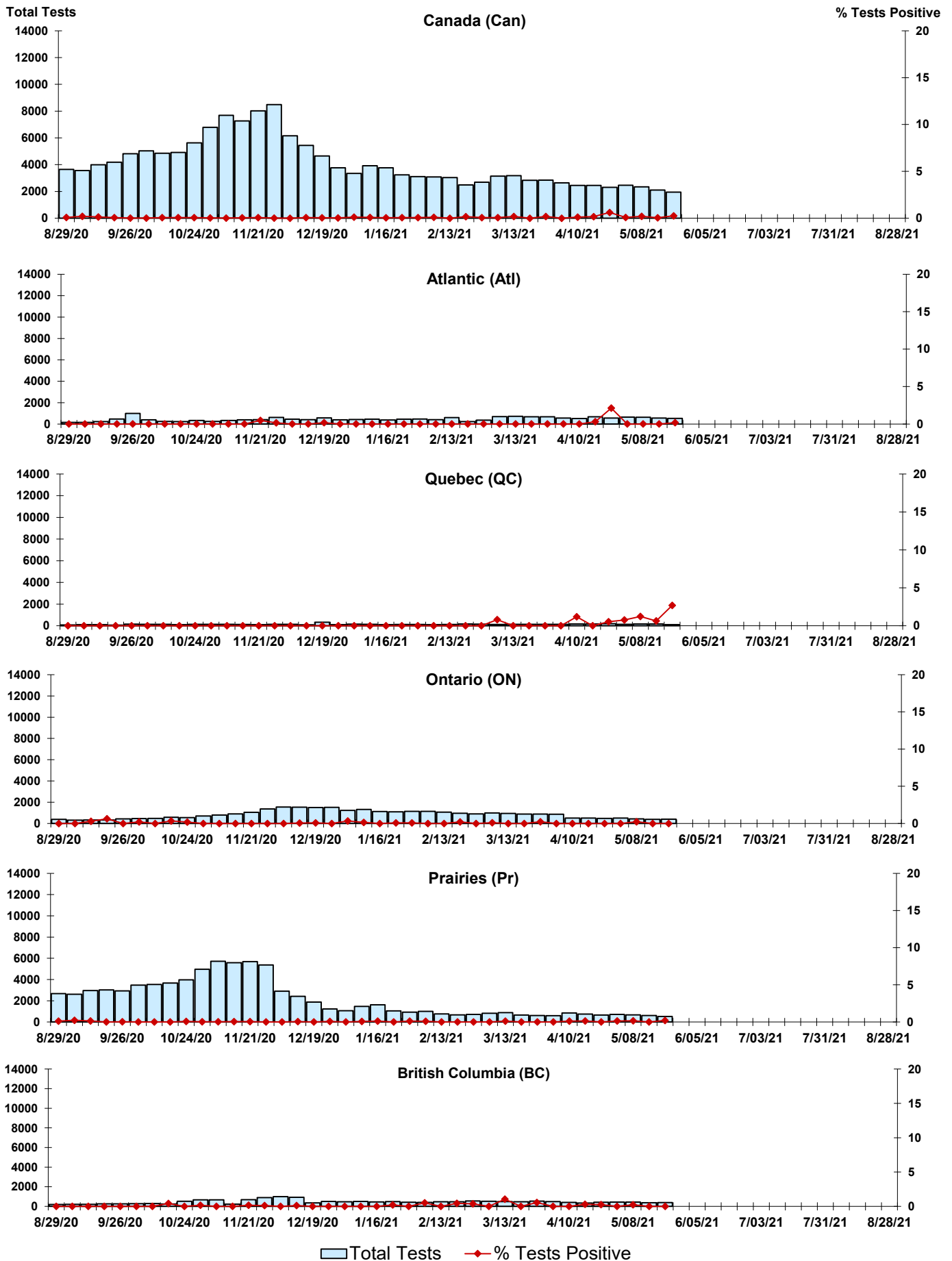


Figure 5: Positive Adenovirus (adeno) Tests (%) in Canada by Region by Week of Report

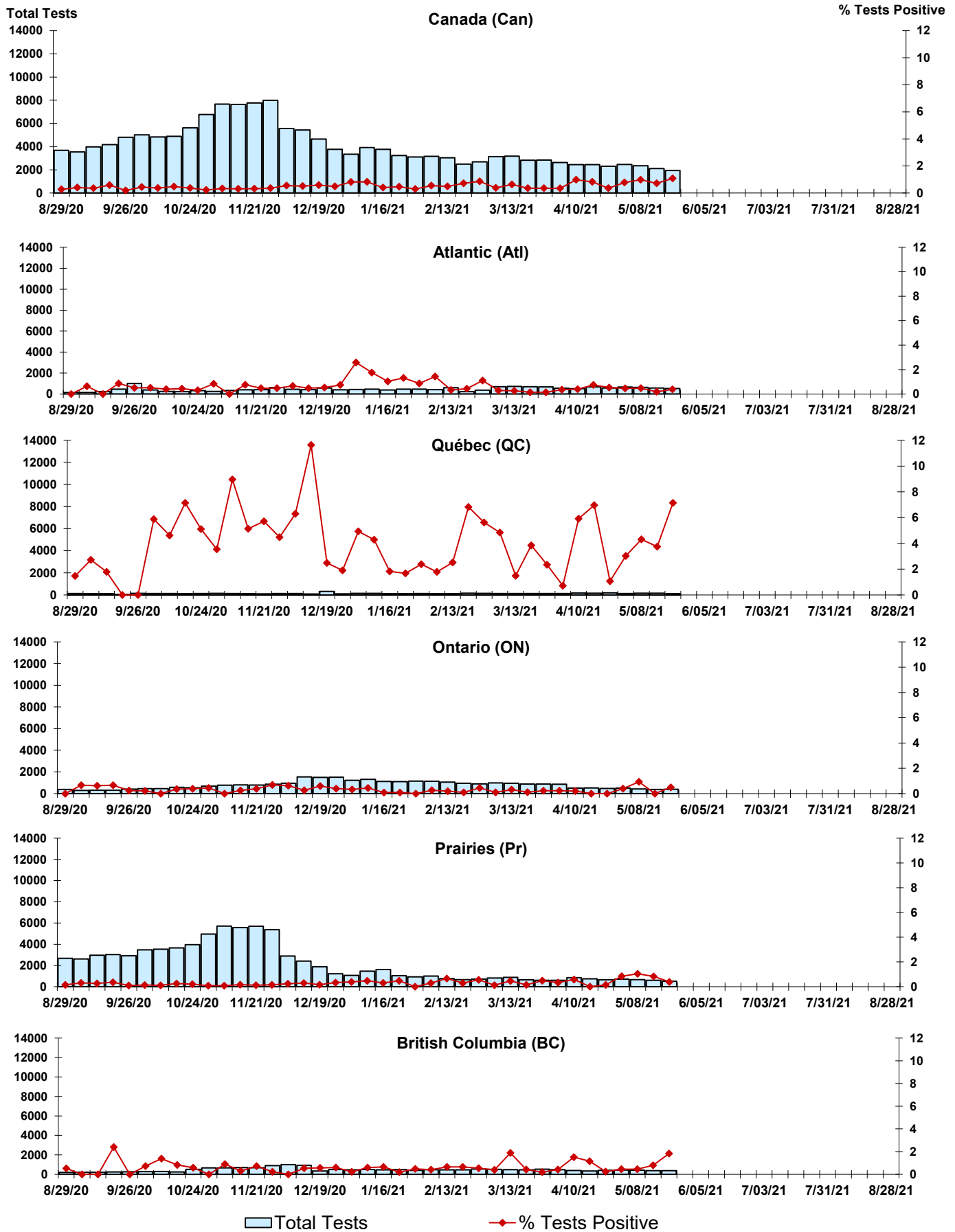


Figure 6: Positive human metapneumovirus (hMPV) Tests (%) in Canada by Region by Week of Report

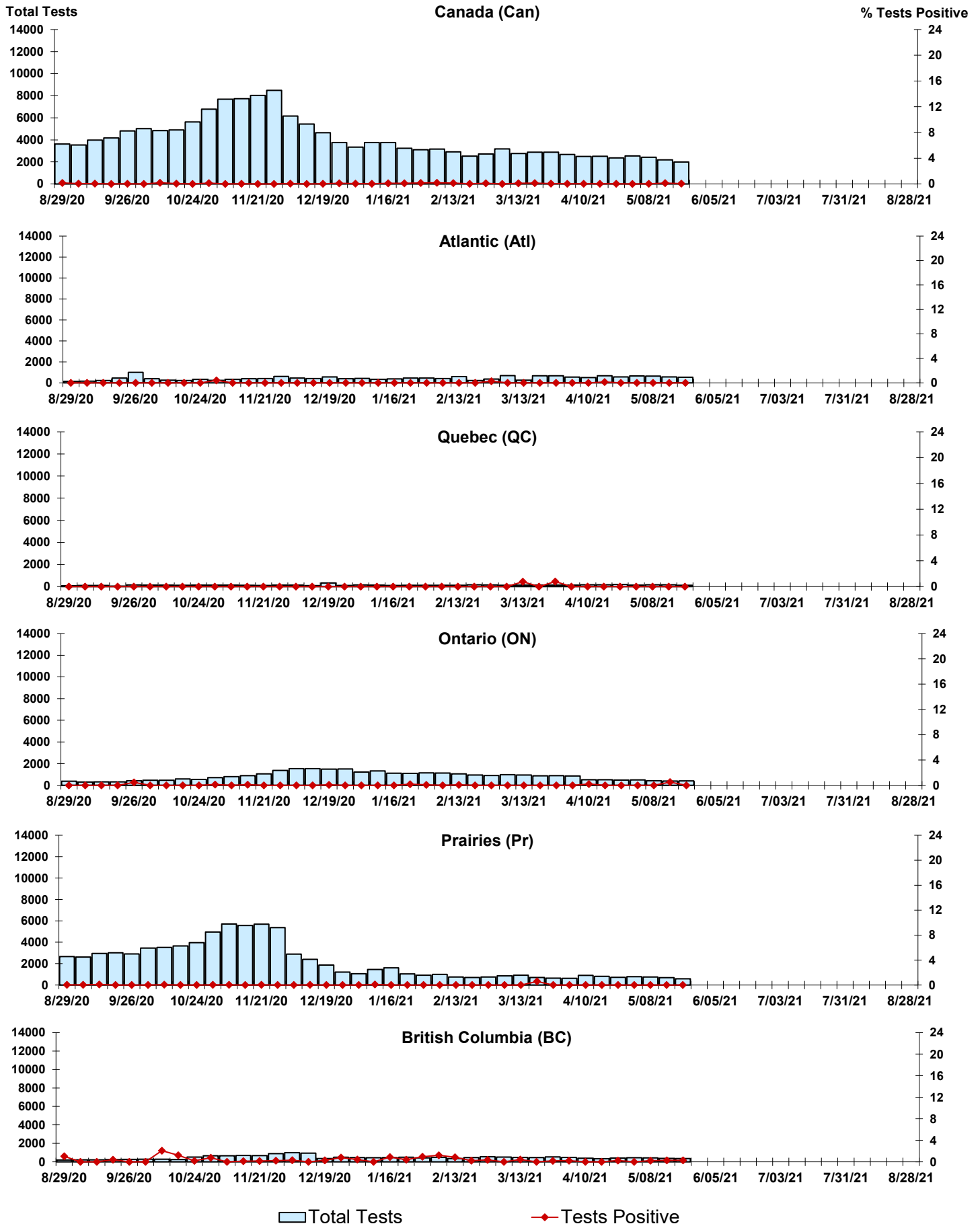


Figure 7: Positive Enterovirus/Rhinovirus (entero/rhino) Tests (%) in Canada by Region by Week of Report

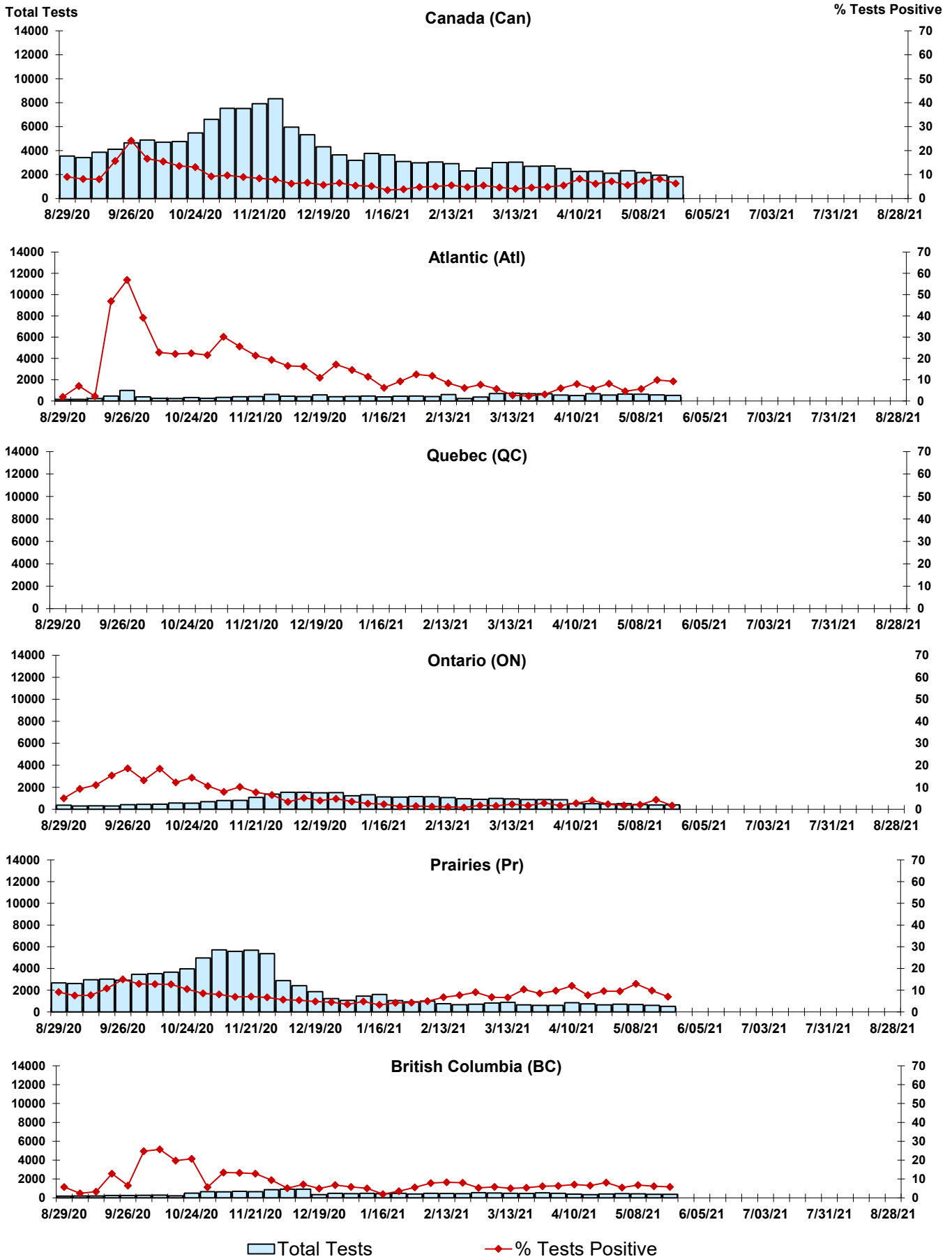
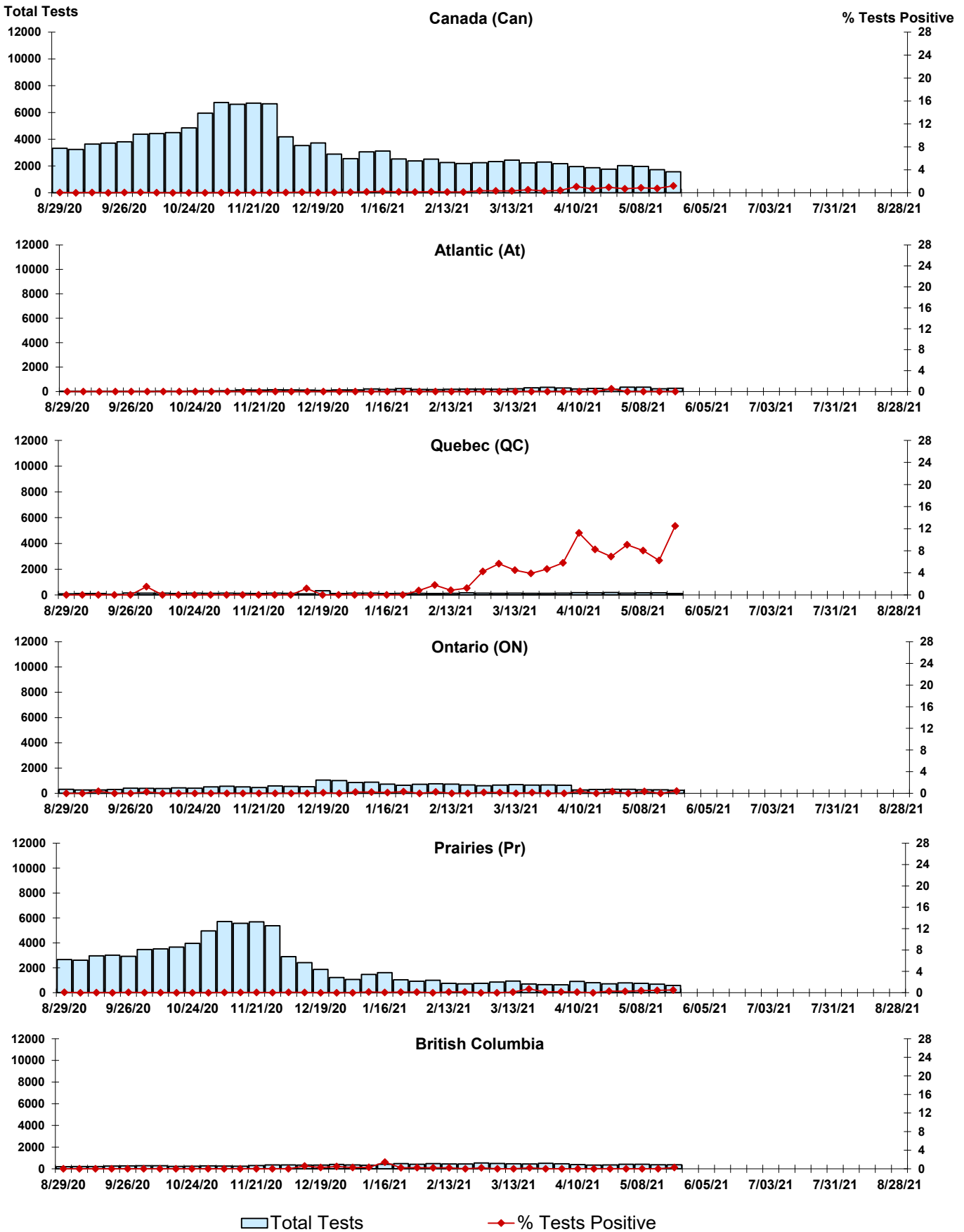


Figure 8: Positive Coronavirus (coron) Tests (%) in Canada by Region by Week of Report



Abbreviations:

A(H1N1)pdm09: Influenza A(H1N1)pdm09

A(H3): Influenza A(H3N2)

A (UnS): Influenza A (Unsubtyped)

Adeno: Adenovirus

CHEO: Children's Hospital of Eastern Ontario

Coron: Coronavirus

Entero: Enterovirus

hMPV: human metapneumovirus

HSC: Health Sciences Centre

N.A.: Not Applicable

P.H.L.: Public Health Laboratory

P.H.O.L.: Public Health Ontario Laboratory

PIV: Parainfluenza

Rhino: Rhinovirus

RSV: Respiratory syncytial virus

UHN: University Health Network

Notes:

The data in the RVDSS report represent surveillance data available at the time of writing. Missing data are denoted by N.A.

Specimens from Yukon (YT), Northwest Territories (NT) and Nunavut (NU) are sent to reference laboratories in other provinces. Results reported for the Territories reflect the number of specimens that are identified as originating from YT, NT or NU.

Delays in the reporting of data may cause data to change retrospectively.

Due to reporting delays, the sum of weekly report totals do not add up to cumulative totals.