

Respiratory Virus Report, Week 21 - ending May 29, 2021

The Respiratory Virus Detection Surveillance System collects data from select laboratories across Canada on the number of tests performed and the number of tests positive for influenza and other respiratory viruses. Data are reported on a weekly basis year-round to the Centre for Immunization and Respiratory Infectious Diseases (CIRID), Public Health Agency of Canada. These data are also summarized in the weekly FluWatch report.

In this Respiratory Virus Report, the number of detections of coronavirus reflects only seasonal human coronaviruses, not the novel pandemic coronavirus (SARS-CoV2) that causes COVID-19. For information on COVID-19, see the [Coronavirus disease \(COVID-19\): Outbreak](#)

Table 1: Respiratory Virus Detections/Isolations for the week ending May 29, 2021 (Reporting Week 202121)

Reporting Laboratory	Flu Tested	A(H1N1)pdm09 Positive	A(H3) Positive	A(UnS) Positive	Total Flu A Positive	Total Flu B Positive	RSV Tested	RSV Positive	PIV Tested	PIV 1 Positive	PIV 2 Positive	PIV 3 Positive	PIV 4 Positive	Other PIV Positive	Adeno Tested	Adeno Positive	hMPV Tested	hMPV Positive	Entero/Rhino Tested	Entero/Rhino Positive	Coron Tested	Coron Positive
Newfoundland	169	0	0	0	0	0	169	0	169	0	0	0	0	0	169	0	169	0	169	10	N.A.	N.A.
Prince Edward Island	55	0	0	0	0	0	55	0	55	0	0	0	0	0	55	0	55	0	55	8	55	0
Nova Scotia	106	0	0	0	0	0	106	0	98	0	0	0	0	0	98	1	98	0	98	0	98	0
New Brunswick	248	0	0	0	0	0	215	0	149	0	0	0	0	0	149	0	149	0	149	1	149	2
Atlantic	578	0	0	0	0	0	545	0	471	0	0	0	0	0	471	1	471	0	471	19	302	2
Région Nord-Est	542	0	0	0	0	0	17	0	2	0	0	0	0	0	2	0	2	0	N.A.	N.A.	2	0
Québec-Chaudière-Appalaches	16	0	0	0	0	0	16	0	16	0	0	0	0	0	16	2	16	0	N.A.	N.A.	16	0
Centre-du-Québec	8	0	0	0	0	0	8	0	7	0	0	0	0	0	7	2	7	0	N.A.	N.A.	7	0
Montréal-Laval	389	0	0	0	0	0	389	13	111	0	0	1	0	0	111	3	111	0	N.A.	N.A.	111	5
Ouest du Québec	72	0	0	0	0	0	72	0	0	0	0	0	0	0	0	0	0	0	N.A.	N.A.	0	0
Montérégie	26	0	0	0	0	0	26	0	0	0	0	0	0	0	0	0	0	0	N.A.	N.A.	0	0
Province of Québec	1053	0	0	0	0	0	528	13	136	0	0	1	0	0	136	7	136	0	N.A.	N.A.	136	5
P.H.O.L. - Ottawa	14	0	0	0	0	0	14	0	12	0	0	0	0	0	12	0	12	0	12	0	12	0
CHEO - Ottawa	85	0	0	0	0	0	85	0	33	0	0	0	0	0	33	1	33	0	33	3	33	0
P.H.O.L. - Kingston	5	0	0	0	0	0	5	0	5	0	0	0	0	0	5	0	5	0	5	0	5	0
UHN / Mount Sinai Hospital	380	0	0	0	0	0	380	0	43	0	0	0	0	0	43	0	43	0	43	0	43	0
P.H.O.L. - Toronto	109	0	0	0	0	0	109	0	82	0	0	0	0	0	82	1	82	0	82	0	82	0
Sick Kids Hospital - Toronto	N.A.	N.A.	N.A.	N.A.	N.A.	N.A.	N.A.	N.A.	N.A.	N.A.	N.A.	N.A.	N.A.	N.A.	N.A.	N.A.	N.A.	N.A.	N.A.	N.A.	N.A.	N.A.
Sunnybrook & Women's College HSC	N.A.	N.A.	N.A.	N.A.	N.A.	N.A.	N.A.	N.A.	N.A.	N.A.	N.A.	N.A.	N.A.	N.A.	N.A.	N.A.	N.A.	N.A.	N.A.	N.A.	N.A.	N.A.
P.H.O.L. - Sault Ste. Marie	2	0	0	0	0	0	2	0	2	0	0	0	0	0	2	0	2	0	2	0	2	0
P.H.O.L. - Timmins	0	0	0	0	0	0	0	0	0	0	0	0	0	0	0	0	0	0	0	0	0	0
St. Joseph's - London	N.A.	N.A.	N.A.	N.A.	N.A.	N.A.	N.A.	N.A.	N.A.	N.A.	N.A.	N.A.	N.A.	N.A.	N.A.	N.A.	N.A.	N.A.	N.A.	N.A.	N.A.	N.A.
P.H.O.L. - London	11	0	0	0	0	0	11	0	5	0	0	0	0	0	5	0	5	0	5	0	5	0
P.H.O.L. - Orillia	1	0	0	0	0	0	1	0	0	0	0	0	0	0	0	0	0	0	0	0	0	0
P.H.O.L. - Thunder Bay	0	0	0	0	0	0	0	0	0	0	0	0	0	0	0	0	0	0	0	0	0	0
P.H.O.L. - Sudbury	11	0	0	0	0	0	11	0	5	0	0	0	0	0	5	0	5	0	5	0	5	3
P.H.O.L. - Hamilton	9	0	0	0	0	0	9	0	8	0	0	0	0	0	8	0	8	0	8	1	8	0
P.H.O.L. - Peterborough	4	0	0	0	0	0	4	0	2	0	0	0	0	0	2	0	2	0	2	0	2	0
St. Joseph's - Hamilton	144	0	0	0	0	0	144	1	144	0	0	1	0	0	144	0	144	0	144	2	0	0
Province of Ontario	775	0	0	0	0	0	775	1	341	0	0	1	0	3	341	2	341	0	341	6	197	3
Province of Manitoba	1925	0	0	0	0	0	1925	0	5	0	0	0	0	0	5	0	72	0	5	2	72	0
Province of Saskatchewan	117	0	0	0	0	0	113	0	32	0	0	0	0	0	32	1	32	0	32	3	32	0
Province of Alberta	1209	0	0	0	0	0	385	0	385	0	0	0	0	0	385	0	385	0	385	22	385	0
Prairies	3251	0	0	0	0	0	2423	0	422	0	0	0	0	0	422	1	489	0	422	27	489	0
British Columbia	977	0	0	0	0	0	977	0	304	0	0	0	0	0	304	1	304	2	297	20	297	0
Yukon	49	0	0	0	0	0	49	0	N.A.	N.A.	N.A.	N.A.	N.A.	N.A.	N.A.	N.A.	N.A.	N.A.	N.A.	N.A.	N.A.	N.A.
Northwest Territories	3	0	0	0	0	0	2	0	2	0	0	0	0	0	2	0	2	0	2	0	2	0
Nunavut	0	0	0	0	0	0	0	0	0	0	0	0	0	0	0	0	0	0	0	0	0	0
Territories	52	0	0	0	0	0	51	0	2	0	0	0	0	0	2	0	2	0	2	0	2	0
CANADA	6686	0	0	0	0	0	5299	14	1676	0	0	2	0	3	1676	12	1743	2	1533	72	1423	10

The data in the RVDSS report represent surveillance data available at the time of writing. Missing data are denoted by N.A.

Specimens from Yukon (YT), Northwest Territories (NT) and Nunavut (NU) are sent to reference laboratories in other provinces and reported results reflect specimens identified as originating from YT, NT or NU.

Results from British Columbia comprise of specimens from the following sites: BC Children's and Women's Hospital, Fraser Health Medical Microbiology Laboratory, Island Health, Providence Health Care, Powell River Hospital, St. Paul's Hospital, Vancouver General Hospital, Victoria General Hospital, BCCDC Public Health Laboratory, Interior Health Authority sites and Northern Health Authority sites.

Delays in the reporting of data may cause data to change retrospectively.

Influenza co-detections may cause the sum of A(H1N1)pdm09, A(H3), and A(UnS) positive results to exceed the sum of Total Flu A Positive results.

Table 2: Respiratory Virus Detections/Isolations for the period August 23, 2020 - May 29, 2021 (Reporting Weeks 202035-202121)

Reporting Laboratory	Flu Tested	A(H1N1)pdm09 Positive	A(H3) Positive	A(UnS) Positive	Total Flu A Positive	Total Flu B Positive	RSV Tested	RSV Positive	PIV Tested	PIV 1 Positive	PIV 2 Positive	PIV 3 Positive	PIV 4 Positive	Other PIV Positive	Adeno Tested	Adeno Positive	hMPV Tested	hMPV Positive	Entero/Rhino Tested	Entero/Rhino Positive	Coron Tested	Coron Positive
Newfoundland	12323	0	0	0	0	0	12323	10	12323	1	0	3	0	0	12336	52	11736	2	12323	2107	N.A.	N.A.
Prince Edward Island	3891	0	0	0	0	0	3891	4	3887	3	0	0	1	0	3887	36	3887	0	3887	458	3887	1
Nova Scotia	8251	0	0	0	0	0	8254	0	1120	0	10	0	1	0	1120	13	1120	1	1120	82	1147	0
New Brunswick	54111	0	0	0	1	1	20137	0	1494	0	0	0	0	0	1485	9	1485	0	1485	56	1440	2
Atlantic	78576	0	0	0	0	1	44605	14	18824	4	10	3	2	0	18828	110	18228	3	18815	2703	6474	3
Région Nord-Est	6919	0	0	0	0	0	1107	1	7	0	0	0	0	0	7	1	7	0	N.A.	N.A.	7	0
Québec-Chaudière-Appalaches	760	0	0	1	1	0	874	0	666	0	0	0	0	0	668	38	663	0	N.A.	N.A.	646	27
Centre-du-Québec	900	0	0	0	0	0	908	2	359	0	0	1	0	0	357	21	359	0	N.A.	N.A.	356	12
Montréal-Laval	9358	0	0	0	0	0	8403	162	4301	2	0	9	0	0	4355	155	4285	2	N.A.	N.A.	4285	107
Ouest du Québec	2358	0	0	0	0	0	2301	0	0	0	0	0	0	0	0	0	0	0	N.A.	N.A.	0	0
Montérégie	1200	0	0	0	0	0	1200	1	0	0	0	0	0	0	0	0	0	0	N.A.	N.A.	0	0
Province of Québec	21495	0	0	1	1	0	14793	166	5333	2	0	10	0	0	5387	215	5314	2	N.A.	N.A.	5294	146
P.H.O.L. - Ottawa	585	0	0	0	0	0	585	1	486	0	0	0	0	0	486	0	485	0	486	24	485	1
CHEO - Ottawa	5028	0	0	1	1	1	4625	5	854	0	0	0	0	0	854	14	854	1	854	92	854	3
P.H.O.L. - Kingston	858	0	0	1	1	0	858	0	565	0	0	0	0	0	565	4	559	0	565	108	559	0
UHN / Mount Sinai Hospital	13977	2	0	2	4	1	13908	6	10419	3	2	3	8	0	8793	10	10379	10	10176	101	8215	6
P.H.O.L. - Toronto	6466	0	0	0	0	0	6463	3	5548	0	0	0	0	3	5549	15	5547	1	5548	158	5547	5
Sick Kids Hospital - Toronto	1237	0	0	0	0	0	0	0	1237	0	0	0	0	0	1237	18	1237	0	1237	119	1237	1
Sunnybrook & Women's College HSC	0	0	0	0	0	0	0	0	0	0	0	0	0	0	0	0	0	0	0	0	0	0
P.H.O.L. - Sault Ste. Marie	176	0	0	2	2	0	174	0	100	0	0	0	0	0	100	0	100	0	100	6	100	0
P.H.O.L. - Timmins	621	0	0	0	0	0	621	0	167	0	0	0	0	0	167	0	166	0	167	31	166	0
St. Joseph's - London	218	0	0	0	0	0	218	0	55	0	0	0	0	0	55	0	55	0	91	8	36	0
P.H.O.L. - London	1913	1	0	5	6	2	1903	0	1293	0	0	0	0	2	1293	2	1287	0	1293	127	1287	3
P.H.O.L. - Orillia	394	0	0	1	1	0	392	0	197	0	0	0	0	0	197	1	197	0	197	12	197	0
P.H.O.L. - Thunder Bay	410	0	0	0	0	0	410	0	391	0	0	0	0	0	392	3	391	0	391	138	391	0
P.H.O.L. - Sudbury	497	0	0	0	0	0	495	0	335	0	0	0	0	4	335	2	335	0	335	30	335	3
P.H.O.L. - Hamilton	1510	0	0	0	0	0	1455	1	1211	0	0	0	0	0	1211	2	1211	0	1211	99	1211	0
P.H.O.L. - Peterborough	514	0	0	1	1	0	468	0	361	0	0	0	0	0	361	0	360	0	361	24	360	0
St. Joseph's - Hamilton	9680	0	0	0	0	0	9680	3	9680	0	0	2	0	0	9680	22	9680	0	9680	451	0	0
Province of Ontario	44084	3	0	13	16	4	42255	19	32899	3	2	5	8	9	31275	93	32843	12	32692	1528	20980	22
Manitoba	56098	0	0	3	3	2	56088	68	2773	0	1	1	0	0	2773	19	3495	1	2773	167	3495	6
Province of Saskatchewan	171549	0	0	1	1	0	26686	4	1890	0	0	1	1	0	1890	15	1890	4	1890	190	1890	11
Province of Alberta	127530	5	0	6	11	0	77826	0	77826	2	19	4	8	0	77826	153	77826	11	77826	6556	77826	30
Prairies	355177	5	0	10	15	2	160600	72	82489	2	20	6	9	0	82489	187	83211	16	82489	6913	83211	47
British Columbia	86734	3	8	1	10	8	86235	6	18184	1	4	1	12	5	18730	106	18527	65	18361	1496	14238	20
Yukon	5107	0	0	8	8	7	5040	4	N.A.	N.A.	N.A.	N.A.	N.A.	N.A.	N.A.	N.A.	N.A.	N.A.	N.A.	N.A.	N.A.	N.A.
Northwest Territories	1176	0	0	0	0	0	1128	0	1128	0	0	0	1	0	1128	12	1128	1	1128	324	1128	1
Nunavut	1124	0	0	0	0	0	1101	0	1101	3	1	0	0	0	1101	25	1101	5	1101	282	191	0
Territories	7407	0	0	8	8	7	7269	4	2229	3	1	0	1	0	2229	37	2229	6	2229	606	1319	1
CANADA	593473	11	8	33	50	22	355757	281	159958	15	37	25	32	14	158938	748	160352	104	154586	13246	131516	239

The data in the RVDSS report represent surveillance data available at the time of writing. Missing data are denoted by N.A.

Specimens from YT, NT and NU are sent to reference laboratories in other provinces and reported results reflect specimens identified as originating from YT, NT or NU.

Results from British Columbia comprise of specimens from the following sites: BC Children's and Women's Hospital, Children's and Women's Hospital Laboratory, Fraser Health Medical Microbiology Laboratory, Island Health, Providence Health Care, Powell River Hospital, St. Paul's Hospital, Vancouver General Hospital, Victoria General Hospital, BCCDC Public Health Laboratory, Interior Health Authority sites and Northern Health Authority sites.

Delays in the reporting of data may cause data to change retrospectively.

Due to reporting delays, the sum of weekly report totals do not add up to cumulative totals.

Influenza co-detections may cause the sum of A(H1N1)pdm09, A(H3), and A(UnS) positive results to exceed the sum of Total Flu A Positive results.

Figure 1: Number positive laboratory tests for other respiratory viruses by report week, Canada, 2020-21

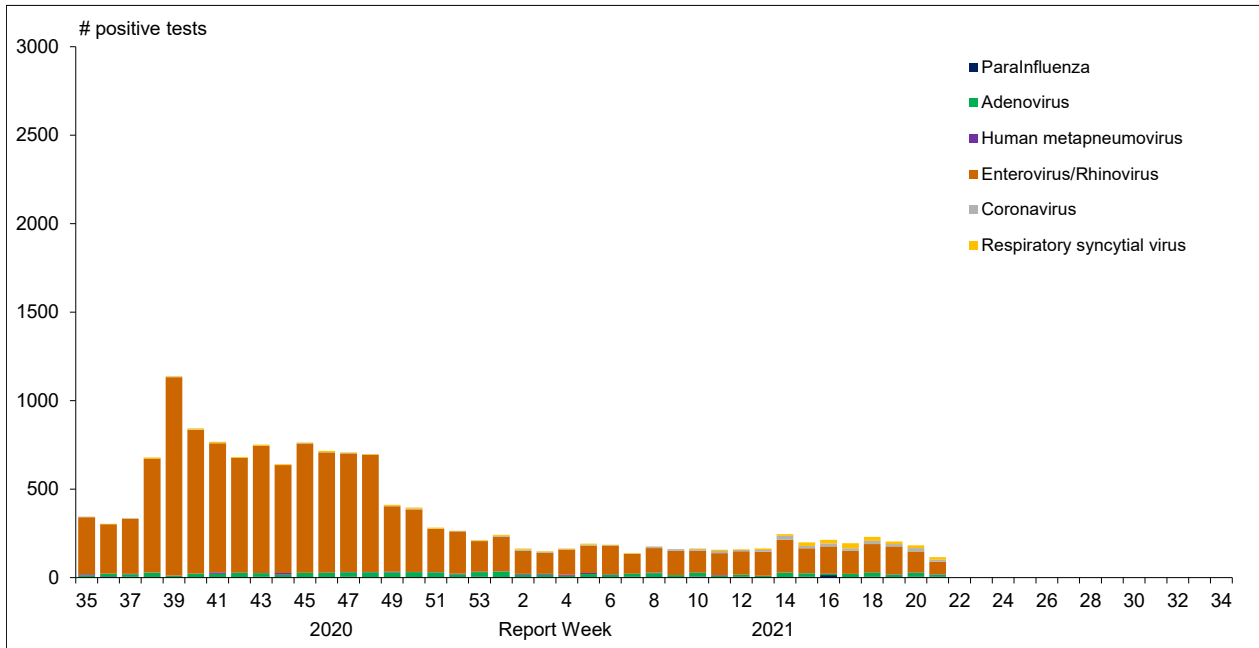


Figure 2 : Positive Influenza Tests (%) in Canada by Region by Week of Report

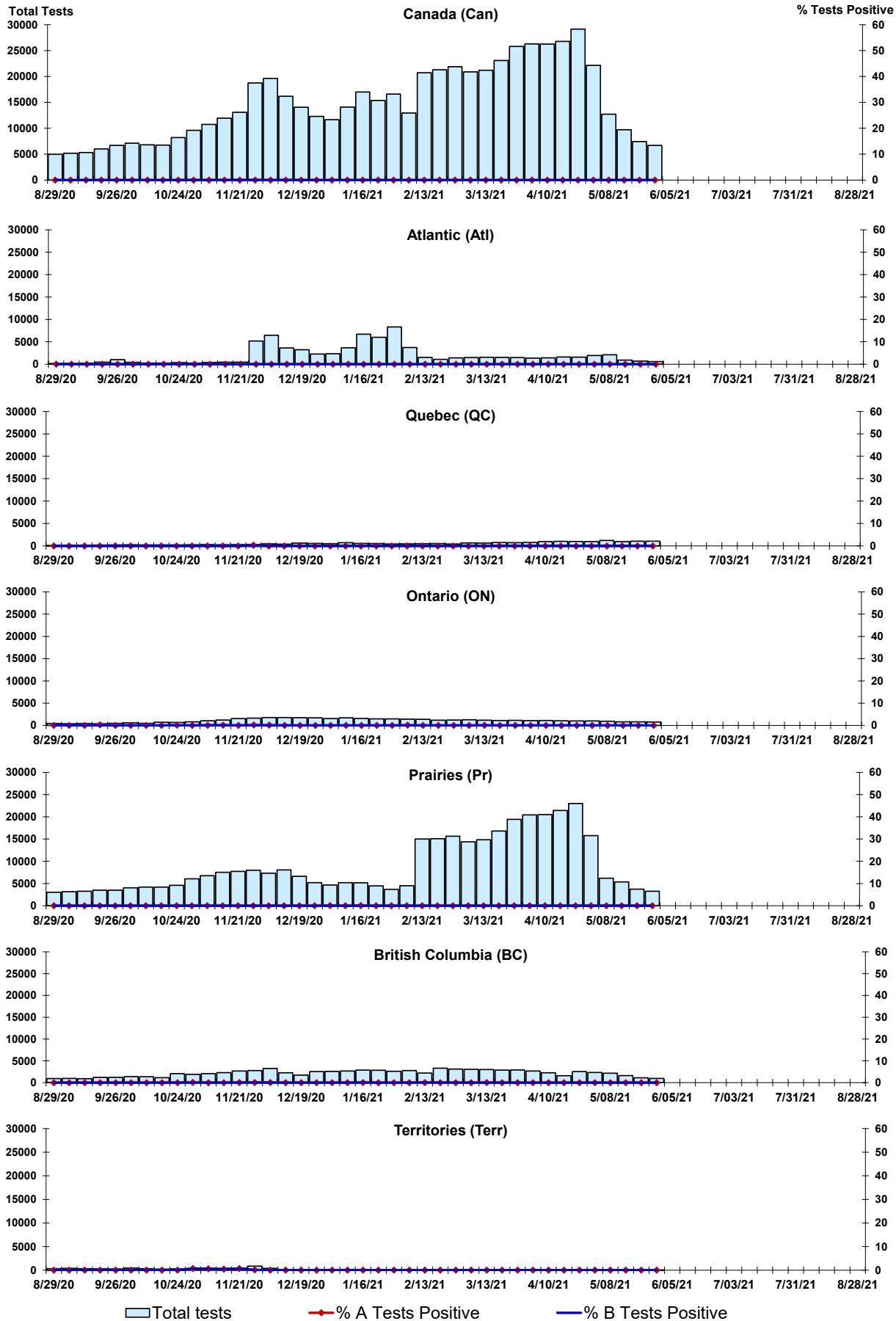


Figure 3: Positive Respiratory syncytial virus (RSV) Tests (%) in Canada by Region by Week of Report

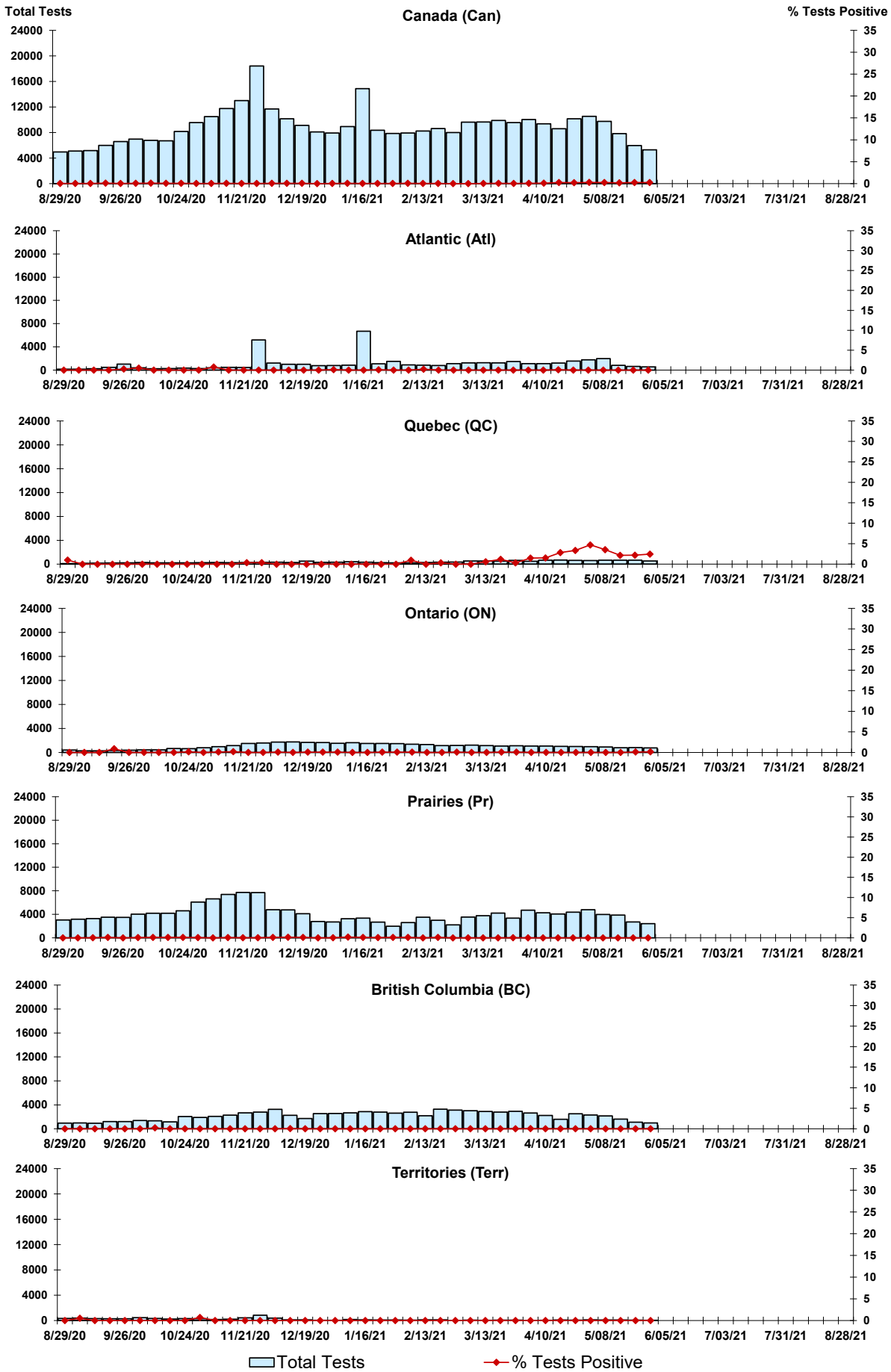


Figure 4: Positive Parainfluenza (PIV) Tests (%) in Canada by Region by Week of Report

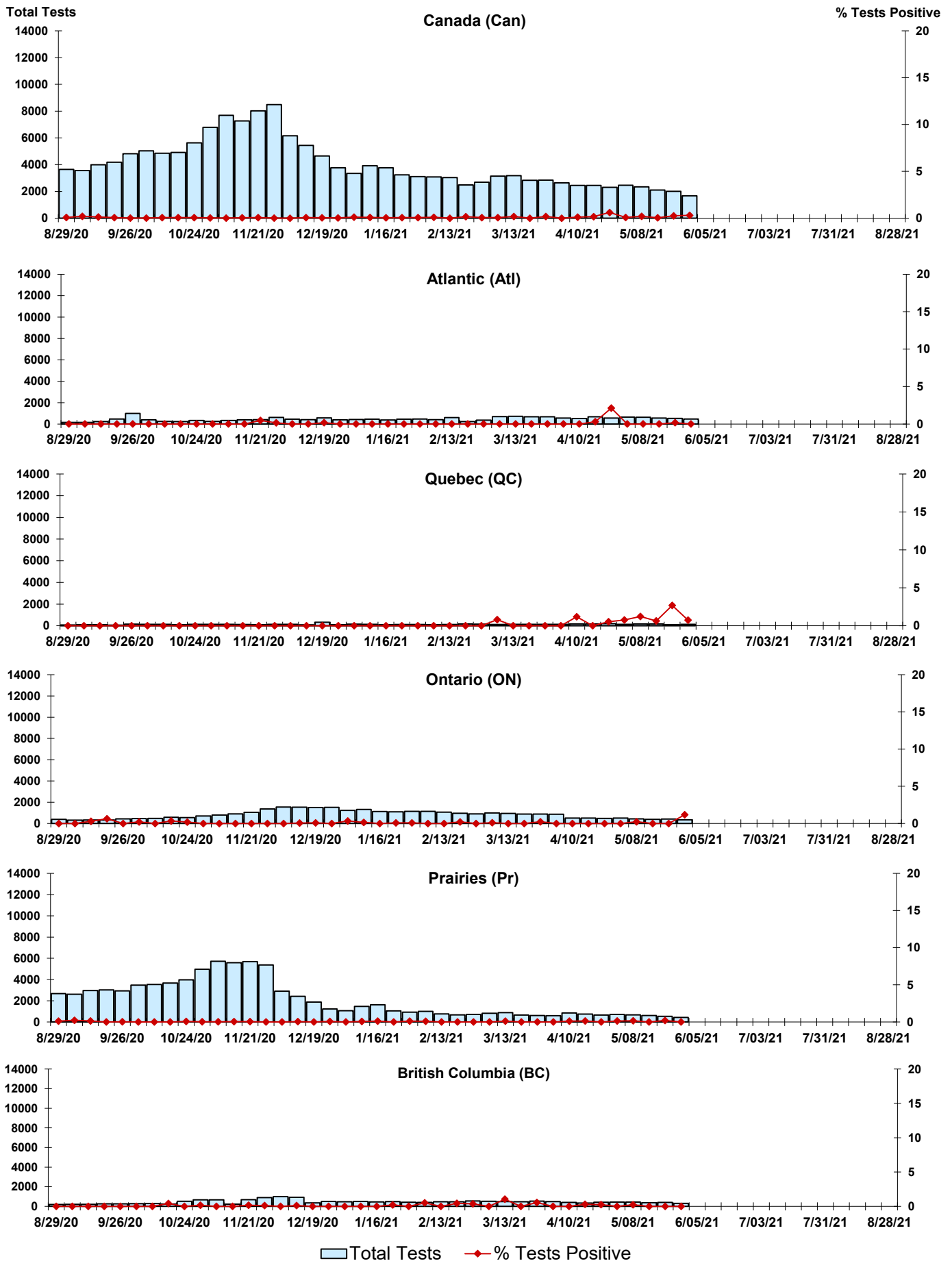


Figure 5: Positive Adenovirus (adeno) Tests (%) in Canada by Region by Week of Report

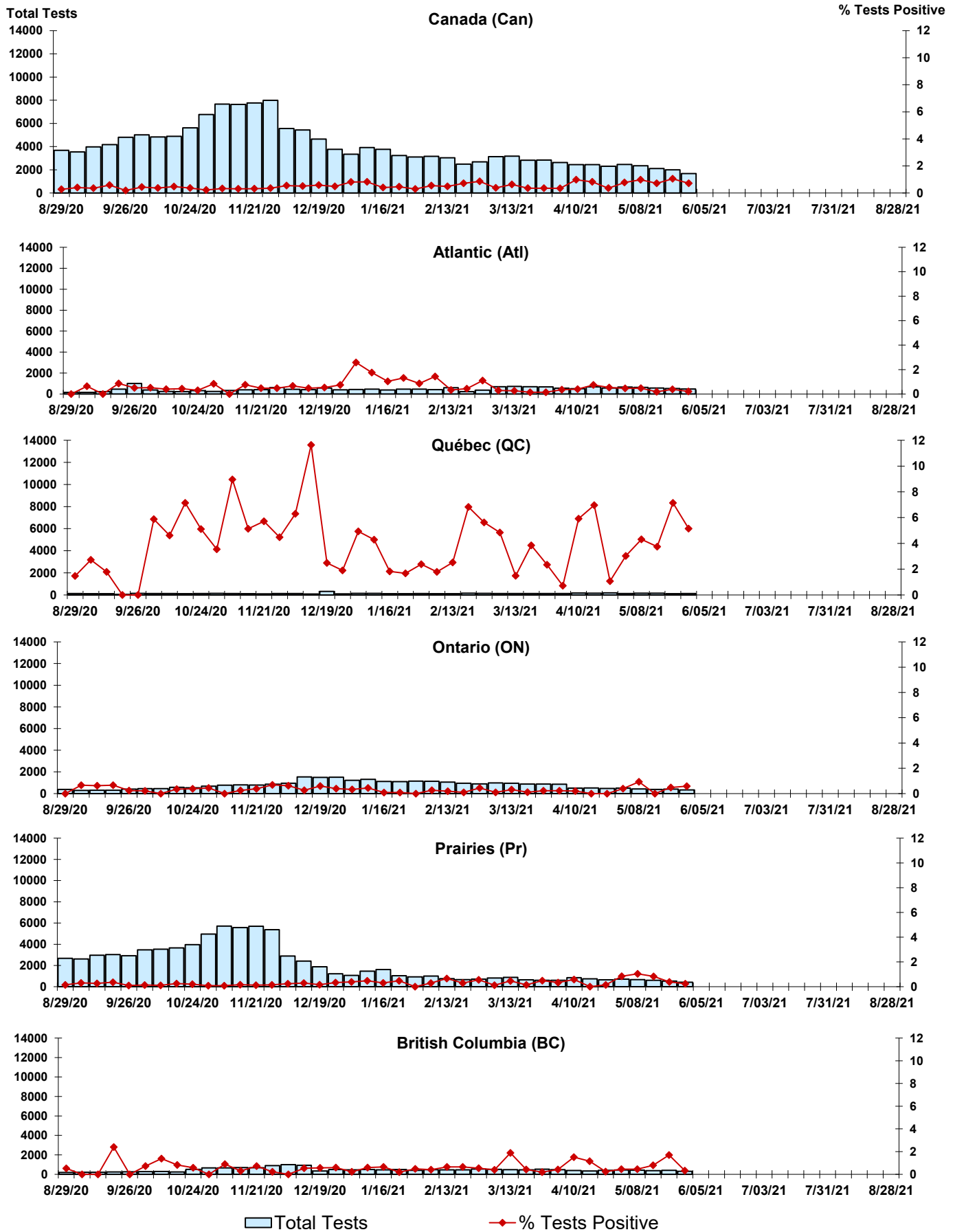


Figure 6: Positive human metapneumovirus (hMPV) Tests (%) in Canada by Region by Week of Report

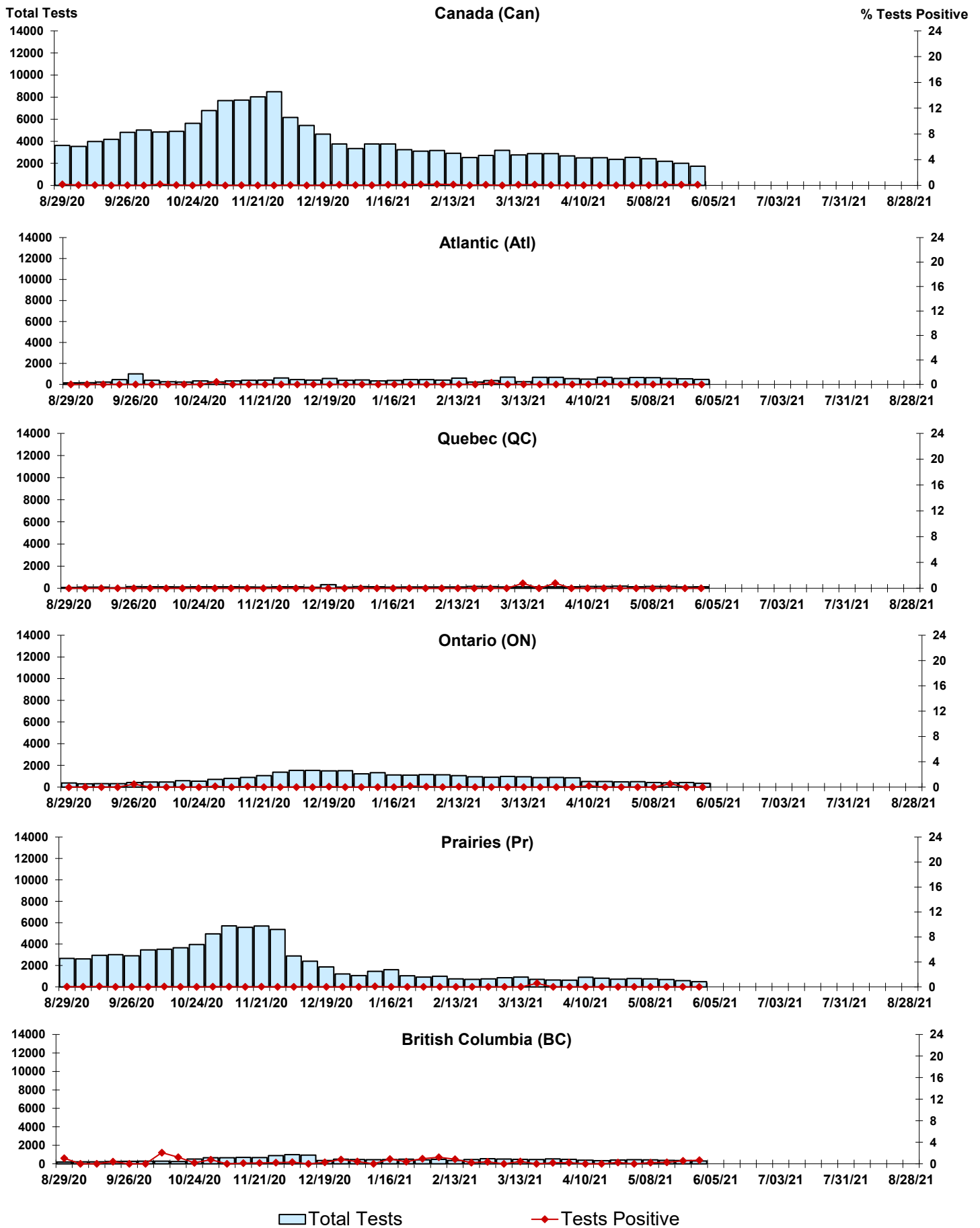


Figure 7: Positive Enterovirus/Rhinovirus (entero/rhino) Tests (%) in Canada by Region by Week of Report

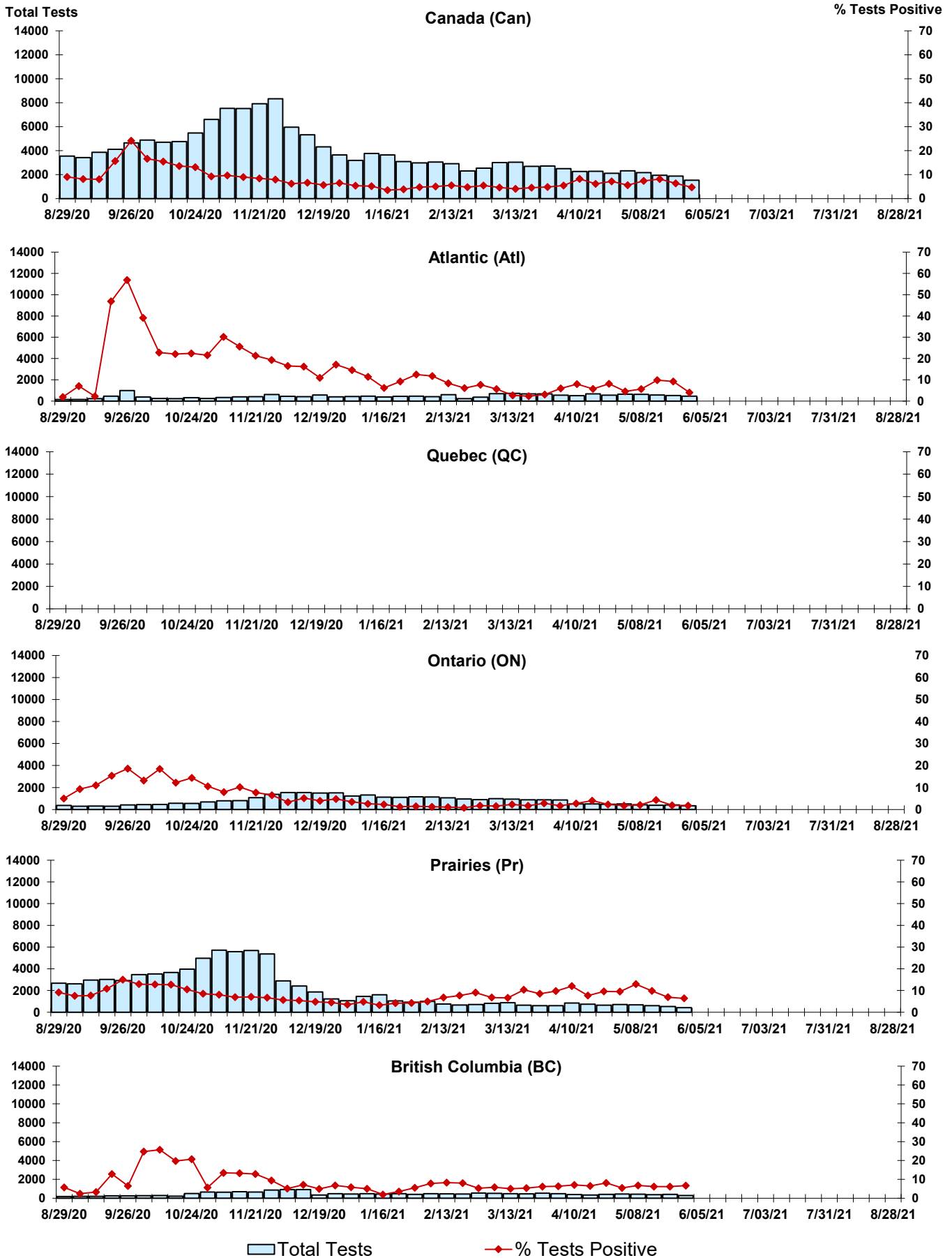
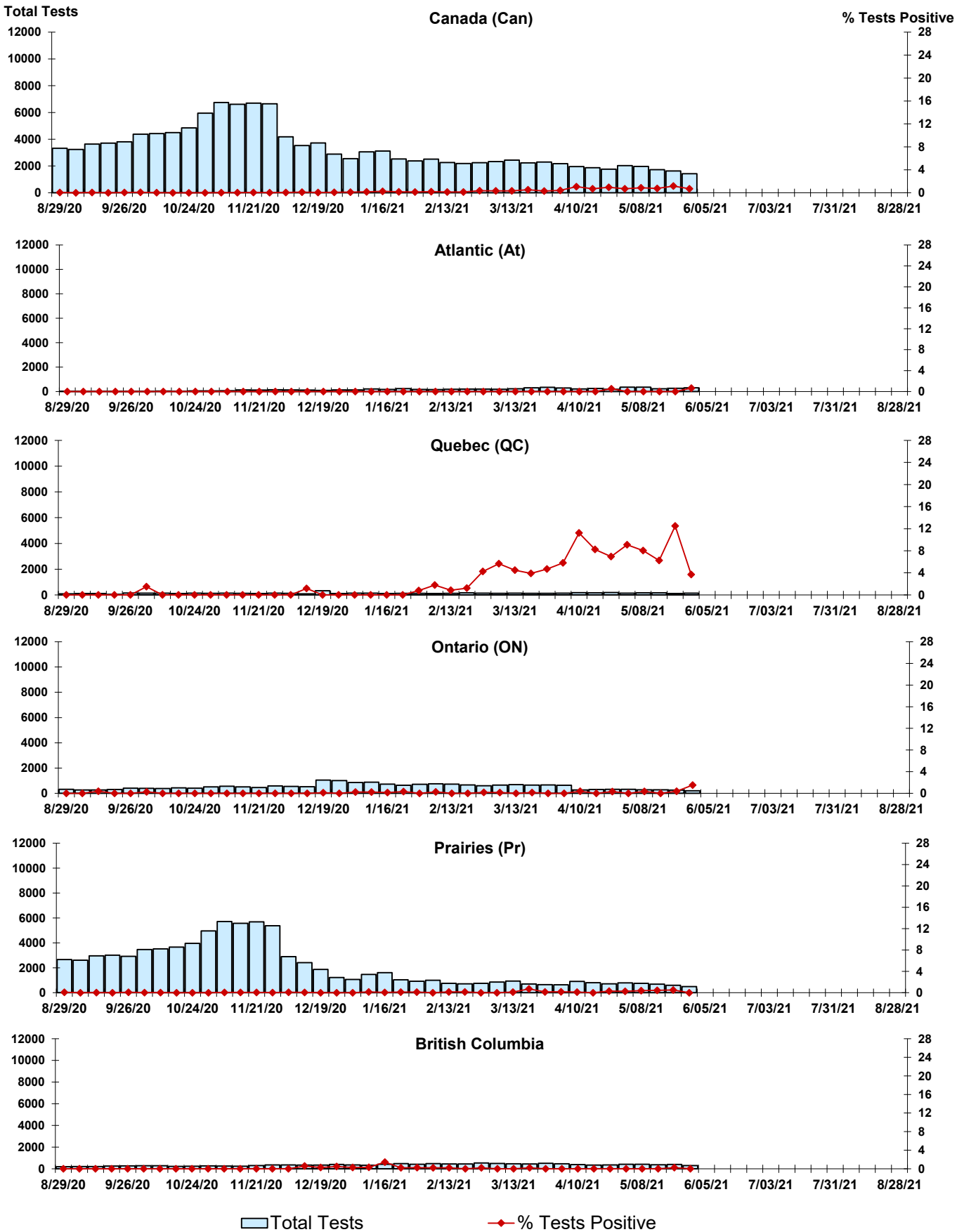


Figure 8: Positive Coronavirus (coron) Tests (%) in Canada by Region by Week of Report



Abbreviations:

A(H1N1)pdm09: Influenza A(H1N1)pdm09

A(H3): Influenza A(H3N2)

A (UnS): Influenza A (Unsubtyped)

Adeno: Adenovirus

CHEO: Children's Hospital of Eastern Ontario

Coron: Coronavirus

Enterovirus: Enterovirus

hMPV: human metapneumovirus

HSC: Health Sciences Centre

N.A.: Not Applicable

P.H.L.: Public Health Laboratory

P.H.O.L.: Public Health Ontario Laboratory

PIV: Parainfluenza

Rhino: Rhinovirus

RSV: Respiratory syncytial virus

UHN: University Health Network

Notes:

The data in the RVDSS report represent surveillance data available at the time of writing. Missing data are denoted by N.A.

Specimens from Yukon (YT), Northwest Territories (NT) and Nunavut (NU) are sent to reference laboratories in other provinces. Results reported for the Territories reflect the number of specimens that are identified as originating from YT, NT or NU.

Delays in the reporting of data may cause data to change retrospectively.

Due to reporting delays, the sum of weekly report totals do not add up to cumulative totals.