

Respiratory Virus Report, Week 22 - ending June 5, 2021

The Respiratory Virus Detection Surveillance System collects data from select laboratories across Canada on the number of tests performed and the number of tests positive for influenza and other respiratory viruses. Data are reported on a weekly basis year-round to the Centre for Immunization and Respiratory Infectious Diseases (CIRID), Public Health Agency of Canada. These data are also summarized in the weekly FluWatch report.

In this Respiratory Virus Report, the number of detections of coronavirus reflects only seasonal human coronaviruses, not the novel pandemic coronavirus (SARS-CoV2) that causes COVID-19. For information on COVID-19, see the [Coronavirus disease \(COVID-19\): Outbreak](#)

Table 1: Respiratory Virus Detections/Isolations for the week ending June 5, 2021 (Reporting Week 202122)

Reporting Laboratory	Flu Tested	A(H1N1)pdm09 Positive	A(H3) Positive	A(UnS) Positive	Total Flu A Positive	Total Flu B Positive	RSV Tested	RSV Positive	PIV Tested	PIV 1 Positive	PIV 2 Positive	PIV 3 Positive	PIV 4 Positive	Other PIV Positive	Adeno Tested	Adeno Positive	hMPV Tested	hMPV Positive	Entero/Rhino Tested	Entero/Rhino Positive	Coron Tested	Coron Positive
Newfoundland	260	0	0	0	0	0	260	0	260	0	0	0	0	0	271	0	260	0	260	36	N.A.	N.A.
Prince Edward Island	44	0	0	0	0	0	44	0	44	0	0	0	0	0	44	1	44	0	44	4	44	0
Nova Scotia	66	0	0	0	0	0	66	0	63	0	0	0	0	0	63	1	63	0	63	2	63	0
New Brunswick	143	0	0	0	0	0	104	0	24	0	0	0	0	0	24	0	24	0	24	2	24	0
Atlantic	513	0	0	0	0	0	474	0	391	0	0	0	0	0	402	2	391	0	391	44	131	0
Région Nord-Est	447	0	0	0	0	0	16	0	0	0	0	0	0	0	0	0	0	0	N.A.	N.A.	0	0
Québec-Chaudière-Appalaches	1	0	0	0	0	0	0	0	0	0	0	0	0	0	0	0	0	0	N.A.	N.A.	0	0
Centre-du-Québec	22	0	0	0	0	0	22	0	24	0	0	0	0	0	24	0	24	0	N.A.	N.A.	24	4
Montréal-Laval	423	0	0	0	0	0	423	9	118	1	0	2	0	0	118	4	118	0	N.A.	N.A.	118	5
Ouest du Québec	72	0	0	0	0	0	72	0	0	0	0	0	0	0	0	0	0	0	N.A.	N.A.	0	0
Montérégie	13	0	0	0	0	0	13	0	0	0	0	0	0	0	0	0	0	0	N.A.	N.A.	0	0
Province of Québec	978	0	0	0	0	0	546	9	142	1	0	2	0	0	142	4	142	0	N.A.	N.A.	142	9
P.H.O.L. - Ottawa	5	0	0	0	0	0	5	0	5	0	0	0	0	0	5	0	5	0	5	0	5	0
CHEO - Ottawa	70	0	0	0	0	0	70	0	70	0	0	0	0	0	25	0	25	0	25	2	25	0
P.H.O.L. - Kingston	8	0	0	0	0	0	8	0	7	0	0	0	0	0	7	0	7	0	7	0	7	0
UHN / Mount Sinai Hospital	344	0	0	0	0	0	344	0	57	0	0	0	0	0	57	0	57	0	57	0	57	0
P.H.O.L. - Toronto	127	0	0	0	0	0	127	0	117	0	0	0	0	0	117	0	117	1	117	2	117	0
Sick Kids Hospital - Toronto	N.A.	N.A.	N.A.	N.A.	N.A.	N.A.	N.A.	N.A.	N.A.	N.A.	N.A.	N.A.	N.A.	N.A.	N.A.	N.A.	N.A.	N.A.	N.A.	N.A.	N.A.	N.A.
Sunnybrook & Women's College HSC	N.A.	N.A.	N.A.	N.A.	N.A.	N.A.	N.A.	N.A.	N.A.	N.A.	N.A.	N.A.	N.A.	N.A.	N.A.	N.A.	N.A.	N.A.	N.A.	N.A.	N.A.	N.A.
P.H.O.L. - Sault Ste. Marie	0	0	0	0	0	0	0	0	0	0	0	0	0	0	0	0	0	0	0	0	0	0
P.H.O.L. - Timmins	2	0	0	0	0	0	2	0	0	0	0	0	0	0	0	0	0	0	0	0	0	0
St. Joseph's - London	N.A.	N.A.	N.A.	N.A.	N.A.	N.A.	N.A.	N.A.	N.A.	N.A.	N.A.	N.A.	N.A.	N.A.	N.A.	N.A.	N.A.	N.A.	N.A.	N.A.	N.A.	N.A.
P.H.O.L. - London	7	0	0	0	0	0	7	0	4	0	0	0	0	0	4	0	4	0	4	0	4	0
P.H.O.L. - Orillia	2	0	0	0	0	0	2	0	1	0	0	0	0	0	1	0	1	0	1	0	1	0
P.H.O.L. - Thunder Bay	5	0	0	0	0	0	5	0	5	0	0	0	0	0	5	0	5	0	5	0	5	0
P.H.O.L. - Sudbury	6	0	0	0	0	0	6	0	3	0	0	0	0	0	3	0	3	0	3	0	3	1
P.H.O.L. - Hamilton	17	0	0	0	0	0	17	0	12	0	0	0	0	0	12	0	12	0	12	0	12	0
P.H.O.L. - Peterborough	12	0	0	0	0	0	12	0	12	0	0	0	0	0	12	0	12	0	12	0	12	0
St. Joseph's - Hamilton	118	0	0	0	0	0	118	0	118	0	0	0	0	0	118	1	118	0	118	0	0	0
Province of Ontario	723	0	0	0	0	0	723	0	411	0	0	0	0	0	366	1	366	1	366	4	248	1
Province of Manitoba	1864	0	0	0	0	0	1864	0	12	0	0	0	0	0	12	1	78	0	12	1	78	0
Province of Saskatchewan	133	0	0	0	0	0	132	0	50	0	0	0	0	0	50	0	50	0	50	1	50	0
Province of Alberta	983	0	0	0	0	0	308	0	308	0	0	0	0	0	308	1	308	0	308	17	308	0
Prairies	2980	0	0	0	0	0	2304	0	370	0	0	0	0	0	370	2	436	0	370	19	436	0
British Columbia	1010	0	0	0	0	0	1010	0	357	0	0	0	0	0	357	3	357	0	345	22	337	0
Yukon	41	0	0	0	0	0	41	0	N.A.	N.A.	N.A.	N.A.	N.A.	N.A.	N.A.	N.A.	N.A.	N.A.	N.A.	N.A.	N.A.	N.A.
Northwest Territories	8	0	0	0	0	0	8	0	8	0	0	0	0	0	8	0	8	0	8	0	8	0
Nunavut	0	0	0	0	0	0	0	0	0	0	0	0	0	0	0	0	0	0	0	0	0	0
Territories	49	0	0	0	0	0	49	0	8	0	0	0	0	0	8	0	8	0	8	0	8	0
CANADA	6253	0	0	0	0	0	5106	9	1679	1	0	2	0	0	1645	12	1700	1	1480	89	1302	10

The data in the RVDSS report represent surveillance data available at the time of writing. Missing data are denoted by N.A.

Specimens from Yukon (YT), Northwest Territories (NT) and Nunavut (NU) are sent to reference laboratories in other provinces and reported results reflect specimens identified as originating from YT, NT or NU.

Results from British Columbia comprise of specimens from the following sites: BC Children's and Women's Hospital, Fraser Health Medical Microbiology Laboratory, Island Health, Providence Health Care, Powell River Hospital, St. Paul's Hospital, Vancouver General Hospital, Victoria General Hospital, BCCDC Public Health Laboratory, Interior Health Authority sites and Northern Health Authority sites.

Delays in the reporting of data may cause data to change retrospectively.

Influenza co-detections may cause the sum of A(H1N1)pdm09, A(H3), and A(UnS) positive results to exceed the sum of Total Flu A Positive results.

Table 2: Respiratory Virus Detections/Isolations for the period August 23, 2020 - June 5, 2021 (Reporting Weeks 202035-202122)

Reporting Laboratory	Flu Tested	A(H1N1)pdm09 Positive	A(H3) Positive	A(UnS) Positive	Total Flu A Positive	Total Flu B Positive	RSV Tested	RSV Positive	PIV Tested	PIV 1 Positive	PIV 2 Positive	PIV 3 Positive	PIV 4 Positive	Other PIV Positive	Adeno Tested	Adeno Positive	hMPV Tested	hMPV Positive	Entero/Rhino Tested	Entero/Rhino Positive	Coron Tested	Coron Positive
Newfoundland	12583	0	0	0	0	0	12583	10	12583	1	0	3	0	0	12607	52	11996	2	12583	2143	N.A.	N.A.
Prince Edward Island	3935	0	0	0	0	0	3935	4	3931	3	0	0	1	0	3931	37	3931	0	3931	462	3931	1
Nova Scotia	8317	0	0	0	0	0	8320	0	1183	0	10	0	1	0	1183	14	1183	1	1183	84	1210	0
New Brunswick	54254	0	0	0	1	20241	0	1518	0	0	0	0	0	0	1509	9	1509	0	1509	58	1464	2
Atlantic	79089	0	0	0	0	1	45079	14	19215	4	10	3	2	0	19230	112	18619	3	19206	2747	6605	3
Région Nord-Est	7366	0	0	0	0	0	1123	1	7	0	0	0	0	0	7	1	7	0	N.A.	N.A.	7	0
Québec-Chaudière-Appalaches	761	0	0	1	1	0	874	0	666	0	0	0	0	0	668	38	663	0	N.A.	N.A.	646	27
Centre-du-Québec	922	0	0	0	0	0	930	2	383	0	0	1	0	0	381	21	383	0	N.A.	N.A.	380	16
Montréal-Laval	9781	0	0	0	0	0	8826	171	4419	3	0	11	0	0	4473	159	4403	2	N.A.	N.A.	4403	112
Ouest du Québec	2430	0	0	0	0	0	2373	0	0	0	0	0	0	0	0	0	0	0	N.A.	N.A.	0	0
Montérégie	1213	0	0	0	0	0	1213	1	0	0	0	0	0	0	0	0	0	0	N.A.	N.A.	0	0
Province of Québec	22473	0	0	1	1	0	15339	175	5475	3	0	12	0	0	5529	219	5456	2	N.A.	N.A.	5436	155
P.H.O.L. - Ottawa	590	0	0	0	0	0	590	1	491	0	0	0	0	0	491	0	490	0	491	24	490	1
CHEO - Ottawa	5098	0	0	1	1	1	4695	5	924	0	0	0	0	0	879	14	879	1	879	94	879	3
P.H.O.L. - Kingston	866	0	0	1	1	0	866	0	572	0	0	0	0	0	572	4	566	0	572	108	566	0
UHN / Mount Sinai Hospital	14321	2	0	2	4	1	14252	6	10476	3	2	3	8	0	8850	10	10436	10	10233	101	8272	6
P.H.O.L. - Toronto	6593	0	0	0	0	0	6590	3	5665	0	0	0	0	3	5666	15	5664	2	5665	160	5664	5
Sick Kids Hospital - Toronto	1237	0	0	0	0	0	0	0	1237	0	0	0	0	0	1237	18	1237	0	1237	119	1237	1
Sunnybrook & Women's College HSC	0	0	0	0	0	0	0	0	0	0	0	0	0	0	0	0	0	0	0	0	0	0
P.H.O.L. - Sault Ste. Marie	176	0	0	2	2	0	174	0	100	0	0	0	0	0	100	0	100	0	100	6	100	0
P.H.O.L. - Timmins	623	0	0	0	0	0	623	0	167	0	0	0	0	0	167	0	166	0	167	31	166	0
St. Joseph's - London	218	0	0	0	0	0	218	0	55	0	0	0	0	0	55	0	55	0	91	8	36	0
P.H.O.L. - London	1920	1	0	5	6	2	1910	0	1297	0	0	0	0	2	1297	2	1291	0	1297	127	1291	3
P.H.O.L. - Orillia	396	0	0	1	1	0	394	0	198	0	0	0	0	0	198	1	198	0	198	12	198	0
P.H.O.L. - Thunder Bay	415	0	0	0	0	0	415	0	396	0	0	0	0	0	397	3	396	0	396	138	396	0
P.H.O.L. - Sudbury	503	0	0	0	0	0	501	0	338	0	0	0	0	4	338	2	338	0	338	30	338	4
P.H.O.L. - Hamilton	1527	0	0	0	0	0	1472	1	1223	0	0	0	0	0	1223	2	1223	0	1223	99	1223	0
P.H.O.L. - Peterborough	526	0	0	1	1	0	480	0	373	0	0	0	0	0	373	0	372	0	373	24	372	0
St. Joseph's - Hamilton	9798	0	0	0	0	0	9798	3	9798	0	0	2	0	0	9798	23	9798	0	9798	451	0	0
Province of Ontario	44807	3	0	13	16	4	42978	19	33310	3	2	5	8	9	31641	94	33209	13	33058	1532	21228	23
Manitoba	57962	0	0	3	3	2	57962	68	2785	0	1	1	0	0	2785	20	3573	1	2785	168	3573	6
Province of Saskatchewan	171703	0	0	1	1	0	26838	4	1940	0	0	1	1	0	1940	15	1940	4	1940	191	1940	11
Province of Alberta	128568	5	0	6	11	0	78156	0	78156	2	19	4	8	0	78156	156	78156	11	78156	6573	78156	30
Prairies	358233	5	0	10	15	2	162946	72	82881	2	20	6	9	0	82881	191	83669	16	82881	6932	83669	47
British Columbia	87743	3	8	1	10	8	87244	6	18552	1	4	1	13	5	19098	109	18895	65	18717	1518	14586	20
Yukon	5151	0	0	8	8	7	5084	4	N.A.	N.A.	N.A.	N.A.	N.A.	N.A.	N.A.	N.A.	N.A.	N.A.	N.A.	N.A.	N.A.	N.A.
Northwest Territories	1187	0	0	0	0	0	1139	0	1139	0	0	0	1	0	1139	12	1139	1	1139	324	1139	1
Nunavut	1124	0	0	0	0	0	1101	0	1101	3	1	0	0	0	1101	25	1101	5	1101	282	191	0
Territories	7462	0	0	8	8	7	7324	4	2240	3	1	0	1	0	2240	37	2240	6	2240	606	1330	1
CANADA	599807	11	8	33	50	22	360910	290	161673	16	37	27	33	14	160619	762	162088	105	156102	13335	132854	249

The data in the RVDSS report represent surveillance data available at the time of writing. Missing data are denoted by N.A.

Specimens from YT, NT and NU are sent to reference laboratories in other provinces and reported results reflect specimens identified as originating from YT, NT or NU.

Results from British Columbia comprise of specimens from the following sites: BC Children's and Women's Hospital, Children's and Women's Hospital Laboratory, Fraser Health Medical Microbiology Laboratory, Island Health, Providence Health Care, Powell River Hospital, St. Paul's Hospital, Vancouver General Hospital, Victoria General Hospital, BCCDC Public Health Laboratory, Interior Health Authority sites and Northern Health Authority sites.

Delays in the reporting of data may cause data to change retrospectively.

Due to reporting delays, the sum of weekly report totals do not add up to cumulative totals.

Influenza co-detections may cause the sum of A(H1N1)pdm09, A(H3), and A(UnS) positive results to exceed the sum of Total Flu A Positive results.

Figure 1: Number positive laboratory tests for other respiratory viruses by report week, Canada, 2020-21

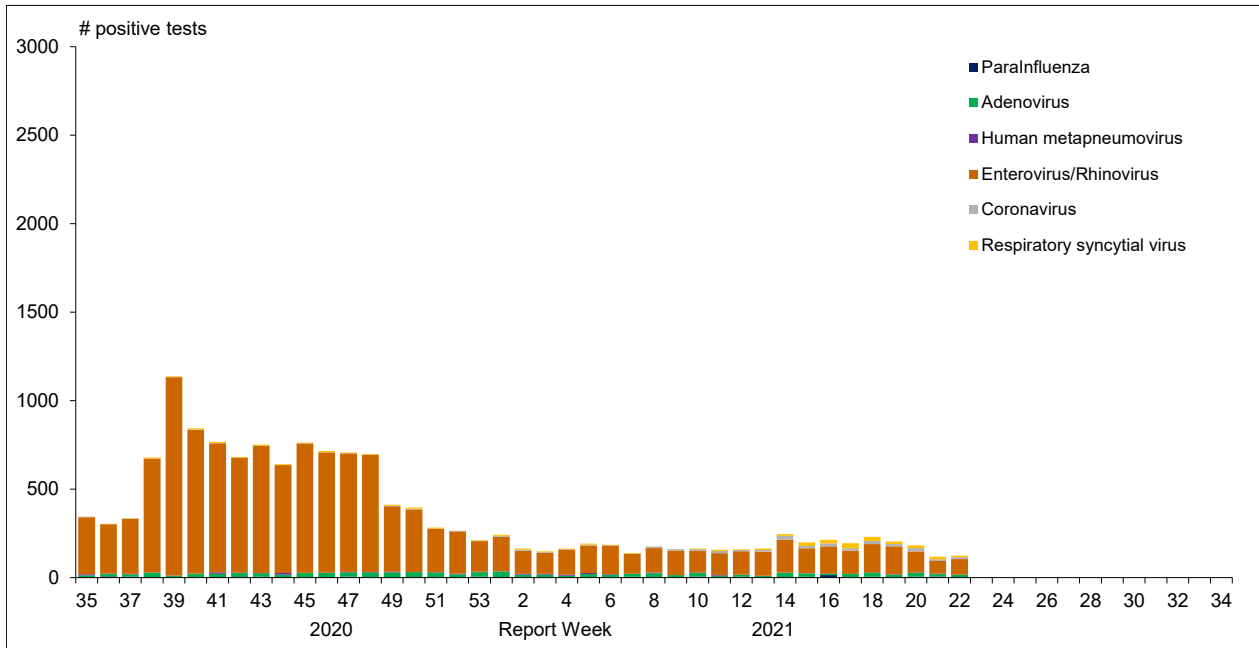


Figure 2 : Positive Influenza Tests (%) in Canada by Region by Week of Report

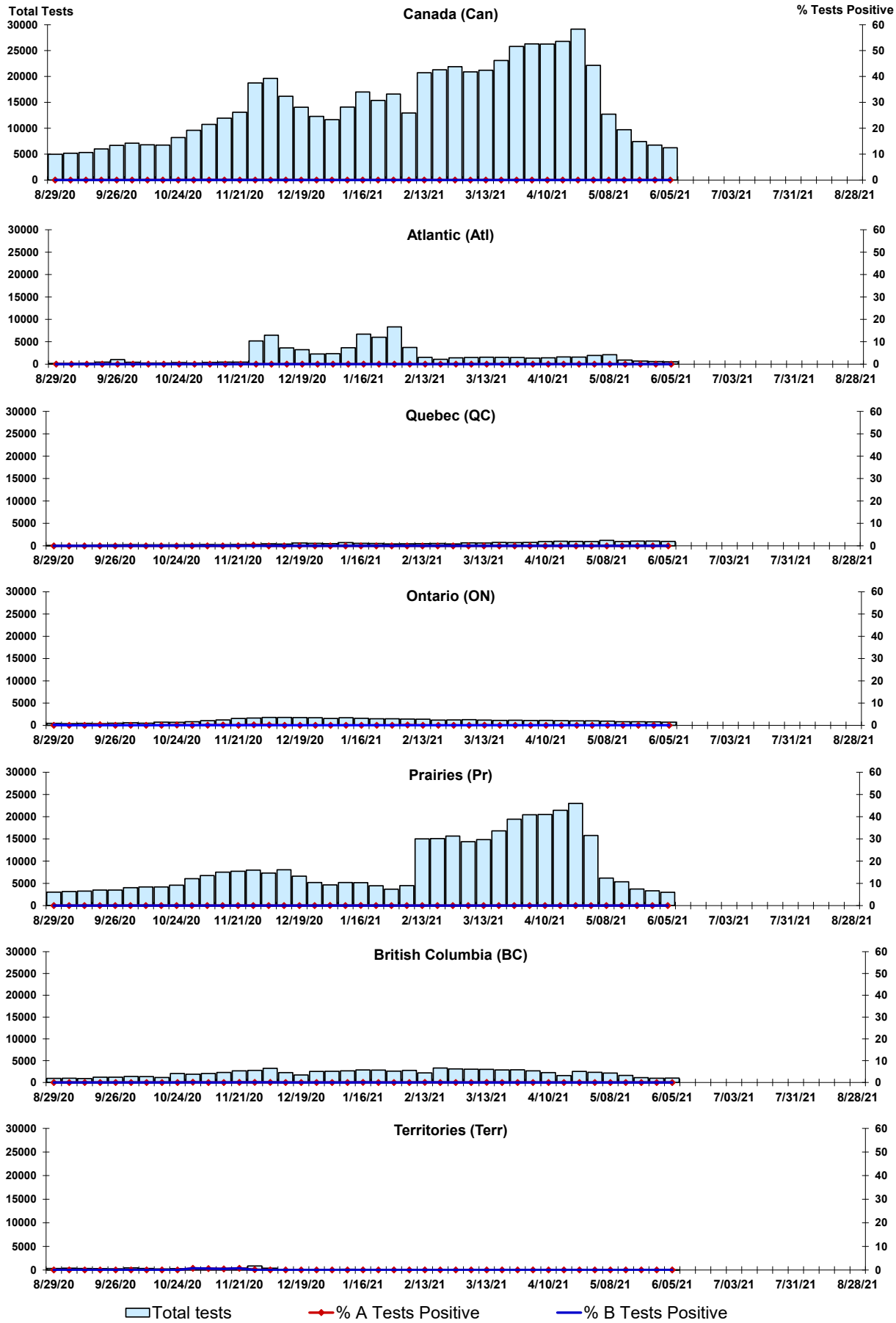


Figure 3: Positive Respiratory syncytial virus (RSV) Tests (%) in Canada by Region by Week of Report

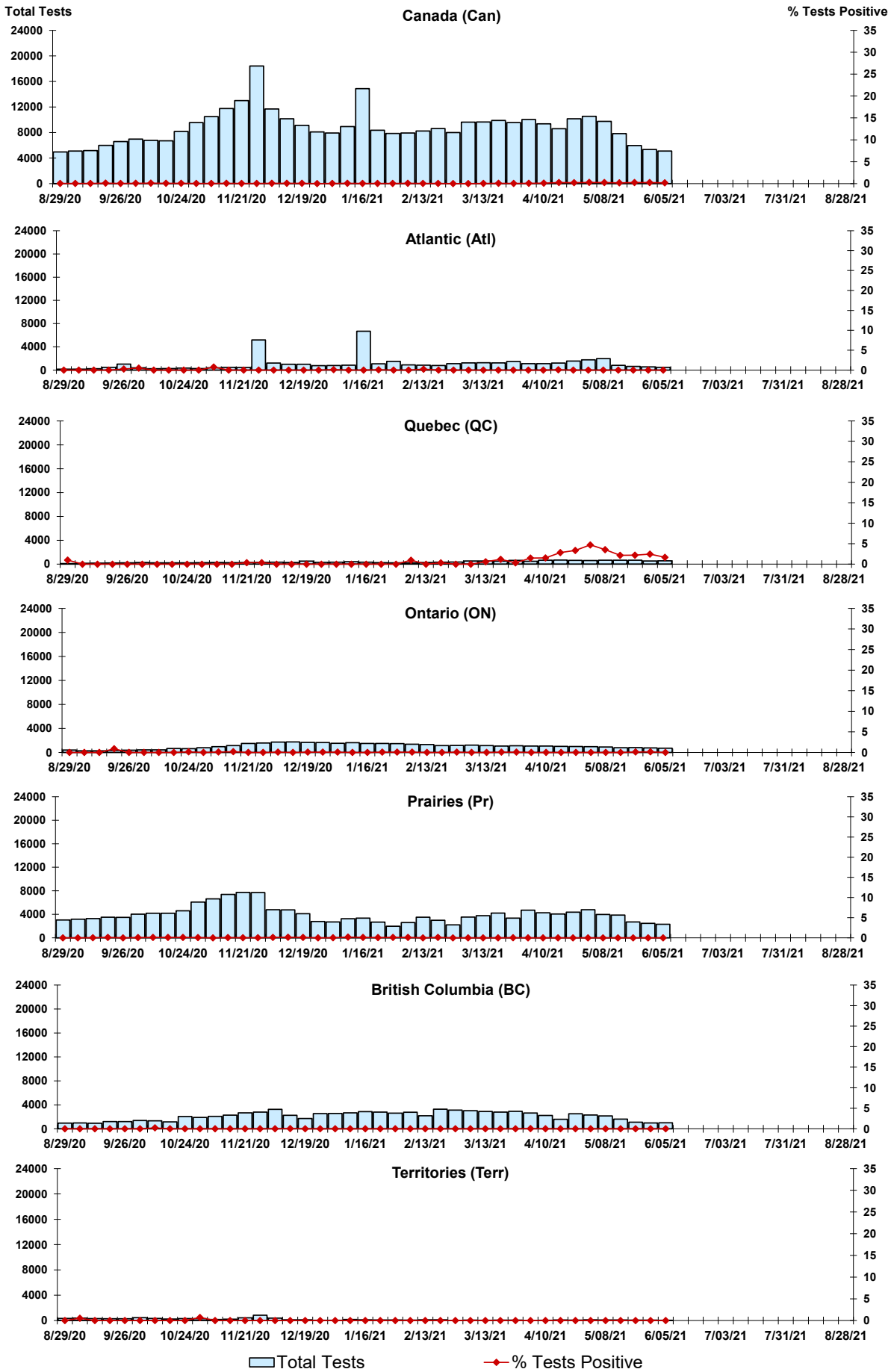


Figure 4: Positive Parainfluenza (PIV) Tests (%) in Canada by Region by Week of Report

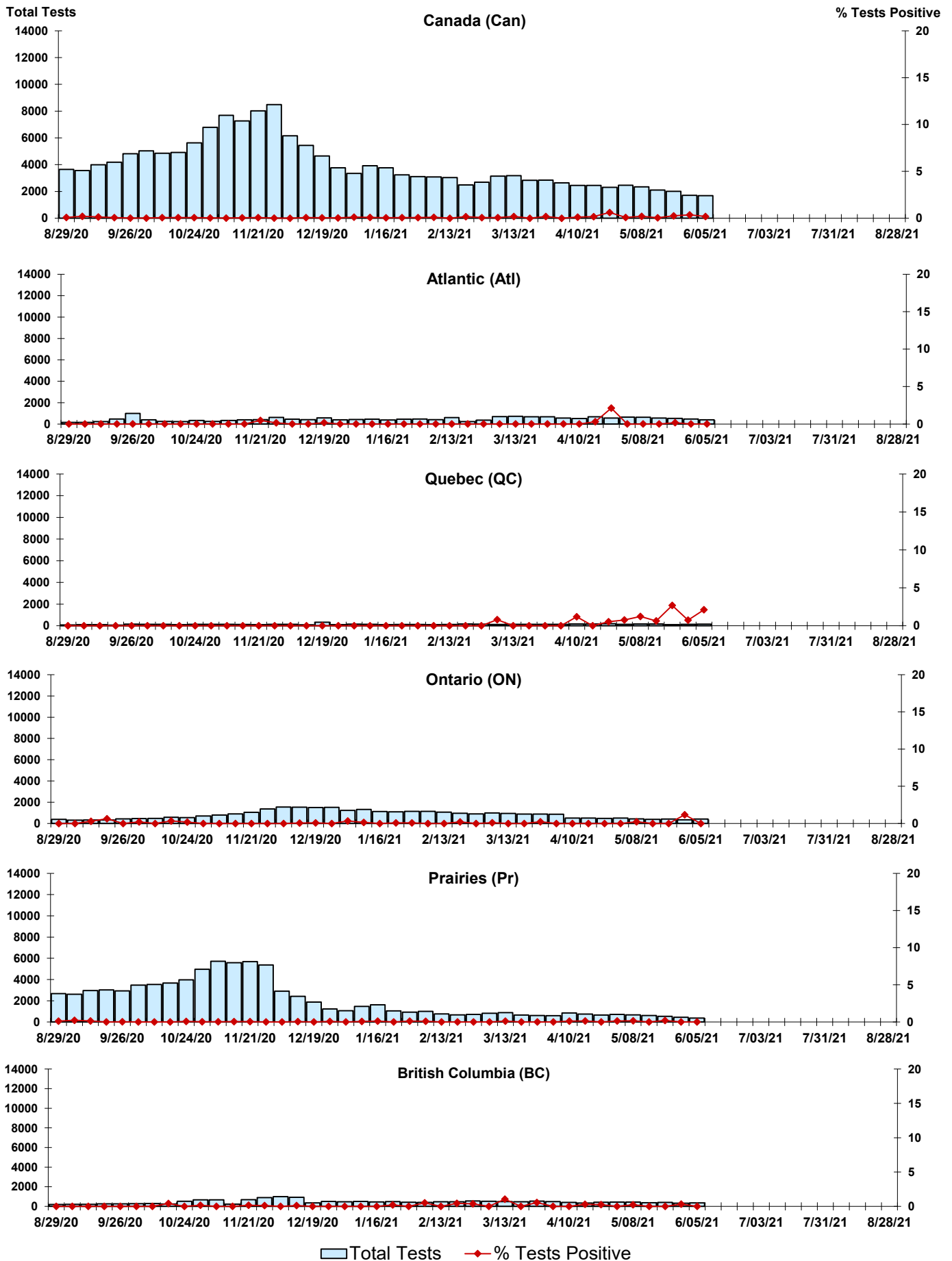


Figure 5: Positive Adenovirus (adeno) Tests (%) in Canada by Region by Week of Report

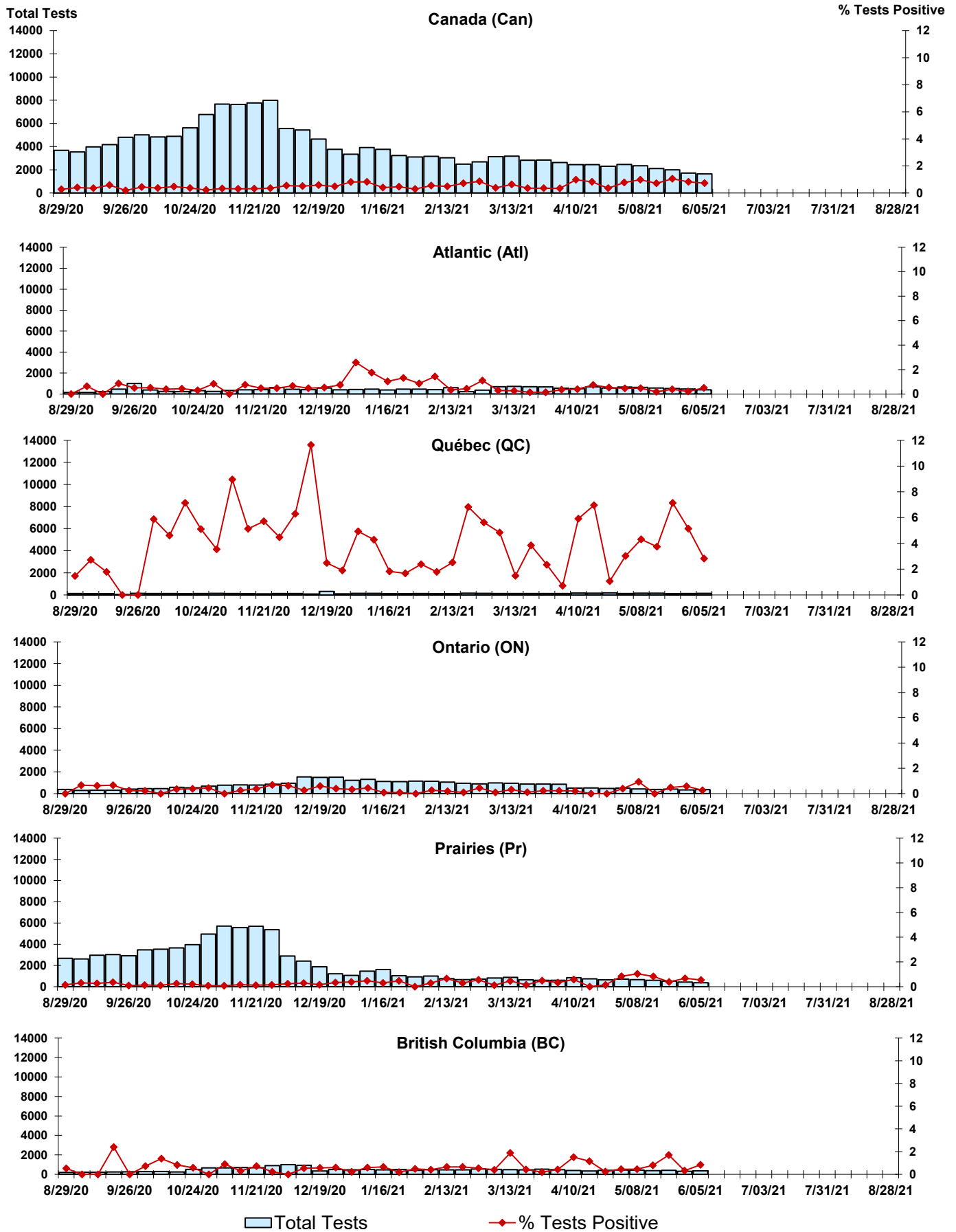
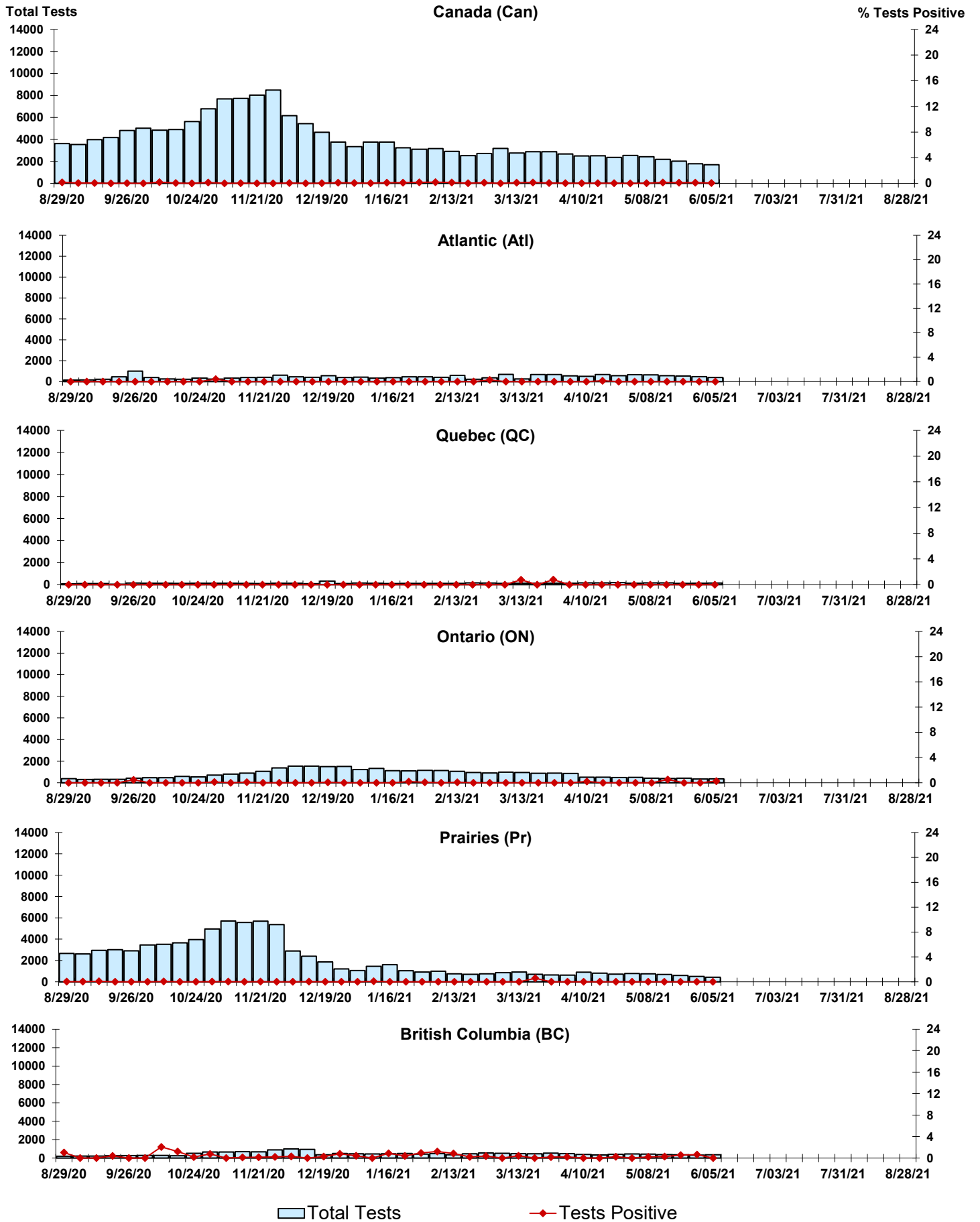


Figure 6: Positive human metapneumovirus (hMPV) Tests (%) in Canada by Region by Week of Report



Legend: Total Tests ◆ Tests Positive

Figure 7: Positive Enterovirus/Rhinovirus (entero/rhino) Tests (%) in Canada by Region by Week of Report

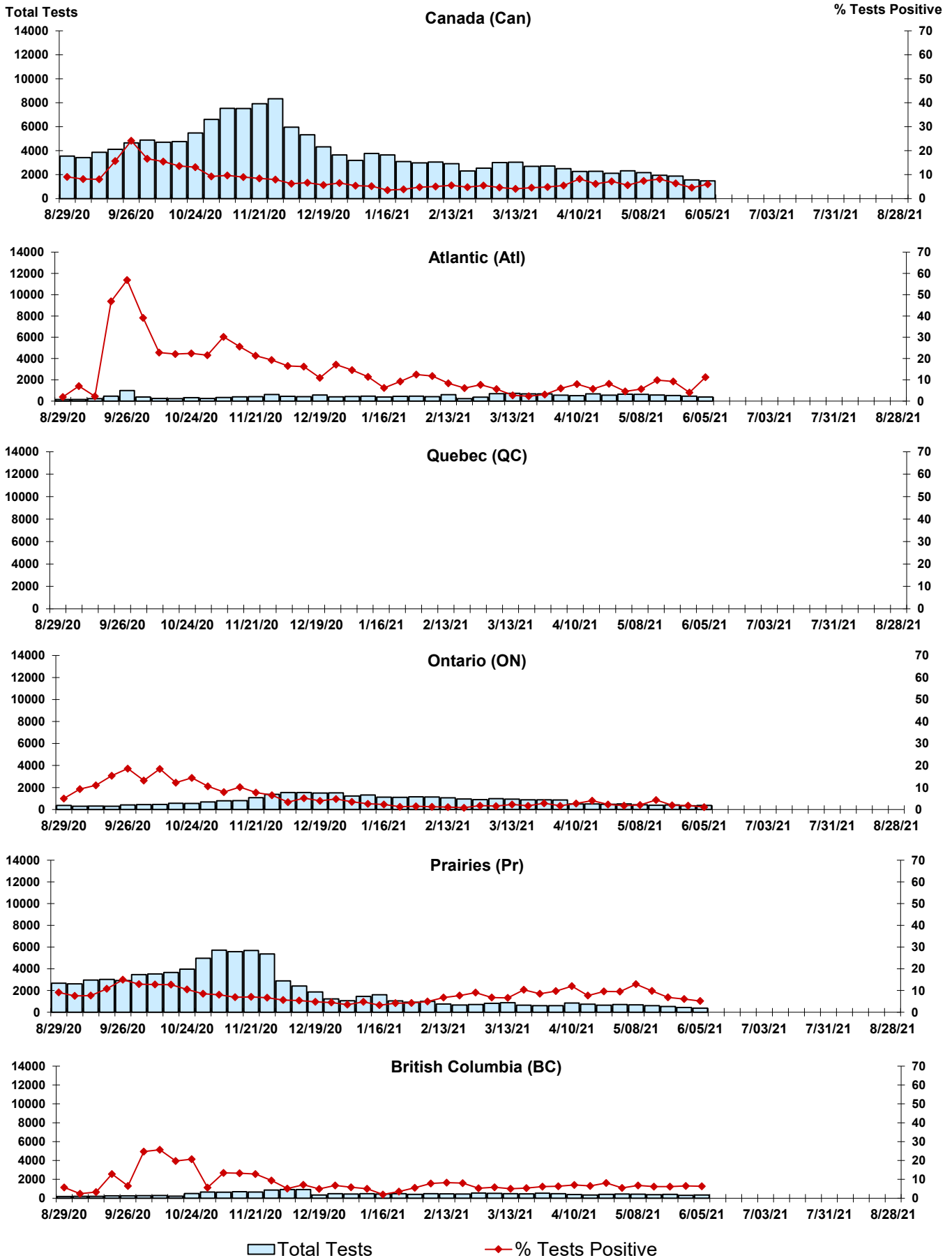
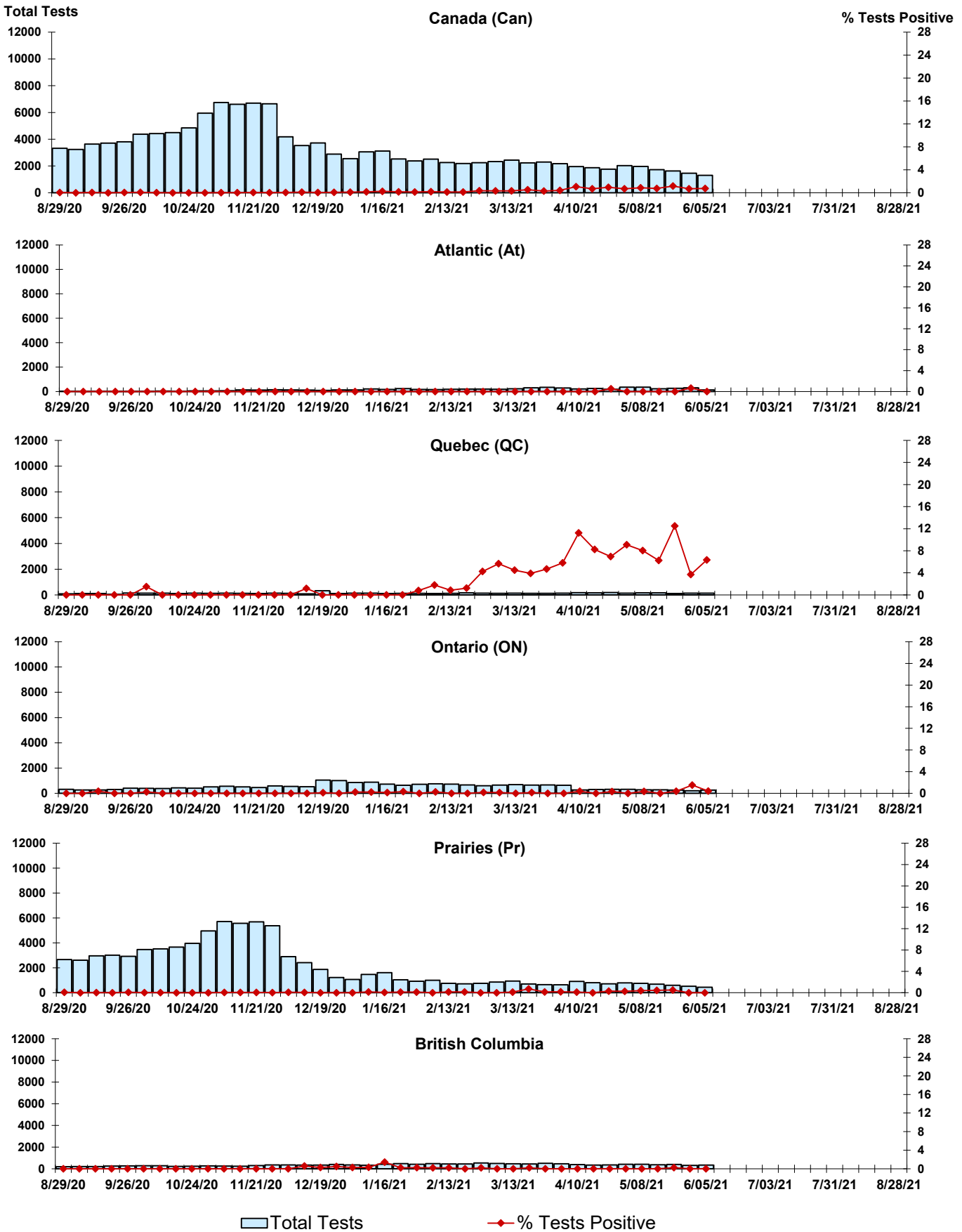


Figure 8: Positive Coronavirus (coron) Tests (%) in Canada by Region by Week of Report



Abbreviations:

A(H1N1)pdm09: Influenza A(H1N1)pdm09

A(H3): Influenza A(H3N2)

A (UnS): Influenza A (Unsubtyped)

Adeno: Adenovirus

CHEO: Children's Hospital of Eastern Ontario

Coron: Coronavirus

Entero: Enterovirus

hMPV: human metapneumovirus

HSC: Health Sciences Centre

N.A.: Not Applicable

P.H.L.: Public Health Laboratory

P.H.O.L.: Public Health Ontario Laboratory

PIV: Parainfluenza

Rhino: Rhinovirus

RSV: Respiratory syncytial virus

UHN: University Health Network

Notes:

The data in the RVDSS report represent surveillance data available at the time of writing. Missing data are denoted by N.A.

Specimens from Yukon (YT), Northwest Territories (NT) and Nunavut (NU) are sent to reference laboratories in other provinces. Results reported for the Territories reflect the number of specimens that are identified as originating from YT, NT or NU.

Delays in the reporting of data may cause data to change retrospectively.

Due to reporting delays, the sum of weekly report totals do not add up to cumulative totals.