

Respiratory Virus Report, Week 23 - ending June 12, 2021

The Respiratory Virus Detection Surveillance System collects data from select laboratories across Canada on the number of tests performed and the number of tests positive for influenza and other respiratory viruses. Data are reported on a weekly basis year-round to the Centre for Immunization and Respiratory Infectious Diseases (CIRID), Public Health Agency of Canada. These data are also summarized in the weekly FluWatch report.

In this Respiratory Virus Report, the number of detections of coronavirus reflects only seasonal human coronaviruses, not the novel pandemic coronavirus (SARS-CoV2) that causes COVID-19. For information on COVID-19, see the [Coronavirus disease \(COVID-19\): Outbreak](#)

Table 1: Respiratory Virus Detections/Isolations for the week ending June 12, 2021 (Reporting Week 202123)

Reporting Laboratory	Flu Tested	A(H1N1)pdm09 Positive	A(H3) Positive	A(UnS) Positive	Total Flu A Positive	Total Flu B Positive	RSV Tested	RSV Positive	PIV Tested	PIV 1 Positive	PIV 2 Positive	PIV 3 Positive	PIV 4 Positive	Other PIV Positive	Adeno Tested	Adeno Positive	hMPV Tested	hMPV Positive	Entero/Rhino Tested	Entero/Rhino Positive	Coron Tested	Coron Positive
Newfoundland	240	0	0	0	0	0	239	0	239	0	0	0	0	0	228	0	239	0	240	32	N.A.	N.A.
Prince Edward Island	40	0	0	0	0	0	40	0	40	0	0	0	0	0	40	1	40	0	40	3	40	0
Nova Scotia	73	0	0	0	0	0	73	0	68	0	0	0	0	0	68	1	68	0	68	1	68	0
New Brunswick	101	0	0	0	0	0	54	0	9	0	0	0	0	0	9	1	9	0	9	0	9	0
Atlantic	454	0	0	0	0	0	406	0	356	0	0	0	0	0	345	3	356	0	357	36	117	0
Région Nord-Est	491	0	0	0	0	0	13	0	0	0	0	0	0	0	0	0	0	0	N.A.	N.A.	0	0
Québec-Chaudière-Appalaches	20	0	0	0	0	0	21	0	20	0	0	0	0	0	20	0	20	0	N.A.	N.A.	20	0
Centre-du-Québec	4	0	0	0	0	0	4	0	9	0	0	1	0	0	9	1	9	0	N.A.	N.A.	9	0
Montréal-Laval	400	0	0	0	0	0	400	15	124	12	0	12	0	0	124	8	124	0	N.A.	N.A.	124	6
Ouest du Québec	46	0	0	0	0	0	46	0	0	0	0	0	0	0	0	0	0	0	N.A.	N.A.	0	0
Montérégie	2	0	0	0	0	0	2	0	0	0	0	0	0	0	0	0	0	0	N.A.	N.A.	0	0
Province of Québec	963	0	0	0	0	0	486	15	153	12	0	13	0	0	153	9	153	0	N.A.	N.A.	153	6
P.H.O.L. - Ottawa	14	0	0	0	0	0	14	0	12	0	0	0	0	0	12	0	12	0	12	0	12	0
CHEO - Ottawa	58	0	0	0	0	0	58	0	58	0	0	0	0	0	31	0	31	0	31	3	31	0
P.H.O.L. - Kingston	6	0	0	0	0	0	6	0	1	0	0	0	0	0	1	0	1	0	1	0	1	0
UHN / Mount Sinai Hospital	391	0	0	0	0	0	391	0	55	0	0	0	0	0	55	0	55	0	55	0	55	0
P.H.O.L. - Toronto	80	0	0	0	0	0	80	0	72	0	0	0	0	0	72	0	71	0	72	0	71	0
Sick Kids Hospital - Toronto	N.A.	N.A.	N.A.	N.A.	N.A.	N.A.	N.A.	N.A.	N.A.	N.A.	N.A.	N.A.	N.A.	N.A.	N.A.	N.A.	N.A.	N.A.	N.A.	N.A.	N.A.	N.A.
Sunnybrook & Women's College HSC	N.A.	N.A.	N.A.	N.A.	N.A.	N.A.	N.A.	N.A.	N.A.	N.A.	N.A.	N.A.	N.A.	N.A.	N.A.	N.A.	N.A.	N.A.	N.A.	N.A.	N.A.	N.A.
P.H.O.L. - Sault Ste. Marie	0	0	0	0	0	0	0	0	0	0	0	0	0	0	0	0	0	0	0	0	0	0
P.H.O.L. - Timmins	1	0	0	0	0	0	1	0	0	0	0	0	0	0	0	0	0	0	0	0	0	0
St. Joseph's - London	N.A.	N.A.	N.A.	N.A.	N.A.	N.A.	N.A.	N.A.	N.A.	N.A.	N.A.	N.A.	N.A.	N.A.	N.A.	N.A.	N.A.	N.A.	N.A.	N.A.	N.A.	N.A.
P.H.O.L. - London	15	0	0	0	0	0	15	0	7	0	0	0	0	0	7	0	7	0	7	0	7	0
P.H.O.L. - Orillia	7	0	0	0	0	0	7	0	1	0	0	0	0	0	1	0	1	0	1	0	1	0
P.H.O.L. - Thunder Bay	0	0	0	0	0	0	0	0	0	0	0	0	0	0	0	0	0	0	0	0	0	0
P.H.O.L. - Sudbury	4	0	0	0	0	0	4	0	2	0	0	0	0	0	2	0	2	0	2	0	2	0
P.H.O.L. - Hamilton	9	0	0	0	0	0	9	0	8	0	0	0	0	0	8	0	8	0	8	0	8	0
P.H.O.L. - Peterborough	8	0	0	0	0	0	8	0	7	0	0	0	0	0	7	0	7	0	7	0	7	0
St. Joseph's - Hamilton	135	0	0	0	0	0	135	0	135	0	0	0	0	0	135	0	135	0	135	5	0	0
Province of Ontario	728	0	0	0	0	0	728	0	358	0	0	0	0	0	331	0	330	0	331	8	195	0
Province of Manitoba	1649	0	1	0	1	0	1649	0	22	0	0	0	0	0	22	0	81	0	22	0	81	0
Province of Saskatchewan	123	0	0	0	0	0	122	0	43	0	0	0	0	0	43	2	43	0	43	4	43	0
Province of Alberta	999	0	0	0	0	0	357	0	357	0	0	0	0	0	357	2	357	0	357	37	357	0
Prairies	2771	0	1	0	1	0	2128	0	422	0	0	0	0	0	422	4	481	0	422	41	481	0
British Columbia	811	0	0	0	0	0	811	0	302	0	0	0	0	0	302	6	302	2	294	25	292	2
Yukon	154	0	0	0	0	0	154	0	N.A.	N.A.	N.A.	N.A.	N.A.	N.A.	N.A.	N.A.	N.A.	N.A.	N.A.	N.A.	N.A.	N.A.
Northwest Territories	7	0	0	0	0	0	7	0	7	0	0	0	0	0	7	0	7	0	7	2	7	0
Nunavut	0	0	0	0	0	0	0	0	0	0	0	0	0	0	0	0	0	0	0	0	0	0
Territories	161	0	0	0	0	0	161	0	7	0	0	0	0	0	7	0	7	0	7	2	7	0
CANADA	5888	0	1	0	1	0	4720	15	1598	12	0	13	0	0	1560	22	1629	2	1411	112	1245	8

The data in the RVDSS report represent surveillance data available at the time of writing. Missing data are denoted by N.A.

Specimens from Yukon (YT), Northwest Territories (NT) and Nunavut (NU) are sent to reference laboratories in other provinces and reported results reflect specimens identified as originating from YT, NT or NU.

Results from British Columbia comprise of specimens from the following sites: BC Children's and Women's Hospital, Fraser Health Medical Microbiology Laboratory, Island Health, Providence Health Care, Powell River Hospital, St. Paul's Hospital, Vancouver General Hospital, Victoria General Hospital, BCCDC Public Health Laboratory, Interior Health Authority sites and Northern Health Authority sites.

Delays in the reporting of data may cause data to change retrospectively.

Influenza co-detections may cause the sum of A(H1N1)pdm09, A(H3), and A(UnS) positive results to exceed the sum of Total Flu A Positive results.

Table 2: Respiratory Virus Detections/Isolations for the period August 23, 2020 - June 12, 2021 (Reporting Weeks 202035-202123)

Reporting Laboratory	Flu Tested	A(H1N1)pdm09 Positive	A(H3) Positive	A(UnS) Positive	Total Flu A Positive	Total Flu B Positive	RSV Tested	RSV Positive	PIV Tested	PIV 1 Positive	PIV 2 Positive	PIV 3 Positive	PIV 4 Positive	Other PIV Positive	Adeno Tested	Adeno Positive	hMPV Tested	hMPV Positive	Entero/Rhino Tested	Entero/Rhino Positive	Coron Tested	Coron Positive
Newfoundland	12823	0	0	0	0	0	12822	10	12822	1	0	3	0	0	12835	52	12235	2	12823	2175	N.A.	N.A.
Prince Edward Island	3975	0	0	0	0	0	3975	4	3971	3	0	0	1	0	3971	38	3971	0	3971	465	3971	1
Nova Scotia	8390	0	0	0	0	0	8393	0	1251	0	10	0	1	0	1251	15	1251	1	1251	85	1278	0
New Brunswick	54355	0	0	0	1	1	20295	0	1527	0	0	0	0	0	1518	10	1518	0	1518	58	1473	2
Atlantic	79543	0	0	0	0	1	45485	14	19571	4	10	3	2	0	19575	115	18975	3	19563	2783	6722	3
Région Nord-Est	7857	0	0	0	0	0	1136	1	7	0	0	0	0	0	7	1	7	0	N.A.	N.A.	7	0
Québec-Chaudière-Appalaches	781	0	0	1	1	0	895	0	686	0	0	0	0	0	688	38	683	0	N.A.	N.A.	666	27
Centre-du-Québec	926	0	0	0	0	0	934	2	392	0	0	2	0	0	390	22	392	0	N.A.	N.A.	389	16
Montréal-Laval	10181	0	0	0	0	0	9226	186	4543	15	0	23	0	0	4597	167	4527	2	N.A.	N.A.	4527	118
Ouest du Québec	2476	0	0	0	0	0	2419	0	0	0	0	0	0	0	0	0	0	0	N.A.	N.A.	0	0
Montérégie	1215	0	0	0	0	0	1215	1	0	0	0	0	0	0	0	0	0	0	N.A.	N.A.	0	0
Province of Québec	23436	0	0	1	1	0	15825	190	5628	15	0	25	0	0	5682	228	5609	2	N.A.	N.A.	5589	161
P.H.O.L. - Ottawa	604	0	0	0	0	0	604	1	503	0	0	0	0	0	503	0	502	0	503	24	502	1
CHEO - Ottawa	5156	0	0	1	1	1	4753	5	982	0	0	0	0	0	910	14	910	1	910	97	910	3
P.H.O.L. - Kingston	872	0	0	1	1	0	872	0	573	0	0	0	0	0	573	4	567	0	573	108	567	0
UHN / Mount Sinai Hospital	14712	2	0	2	4	1	14643	6	10531	3	2	3	8	0	8905	10	10491	10	10288	101	8327	6
P.H.O.L. - Toronto	6672	0	0	0	0	0	6669	3	5736	0	0	0	0	3	5737	15	5734	2	5736	160	5734	5
Sick Kids Hospital - Toronto	1237	0	0	0	0	0	0	0	1237	0	0	0	0	0	1237	18	1237	0	1237	119	1237	1
Sunnybrook & Women's College HSC	0	0	0	0	0	0	0	0	0	0	0	0	0	0	0	0	0	0	0	0	0	0
P.H.O.L. - Sault Ste. Marie	176	0	0	2	2	0	174	0	100	0	0	0	0	0	100	0	100	0	100	6	100	0
P.H.O.L. - Timmins	624	0	0	0	0	0	624	0	167	0	0	0	0	0	167	0	166	0	167	31	166	0
St. Joseph's - London	218	0	0	0	0	0	218	0	55	0	0	0	0	0	55	0	55	0	91	8	36	0
P.H.O.L. - London	1935	1	0	5	6	2	1925	0	1304	0	0	0	0	2	1304	2	1298	0	1304	127	1298	3
P.H.O.L. - Orillia	403	0	0	1	1	0	401	0	199	0	0	0	0	0	199	1	199	0	199	12	199	0
P.H.O.L. - Thunder Bay	415	0	0	0	0	0	415	0	396	0	0	0	0	0	397	3	396	0	396	138	396	0
P.H.O.L. - Sudbury	507	0	0	0	0	0	505	0	340	0	0	0	0	4	340	2	340	0	340	30	340	4
P.H.O.L. - Hamilton	1536	0	0	0	0	0	1481	1	1231	0	0	0	0	0	1231	2	1231	0	1231	99	1231	0
P.H.O.L. - Peterborough	534	0	0	1	1	0	488	0	380	0	0	0	0	0	380	0	379	0	380	24	379	0
St. Joseph's - Hamilton	9933	0	0	0	0	0	9933	3	9933	0	0	2	0	0	9933	23	9933	0	9933	456	0	0
Province of Ontario	45534	3	0	13	16	4	43705	19	33667	3	2	5	8	9	31971	94	33538	13	33388	1540	21422	23
Manitoba	59611	0	1	3	4	2	59601	68	2807	0	1	1	0	0	2807	20	3654	1	2807	168	3654	6
Province of Saskatchewan	171837	0	0	1	1	0	26971	4	1983	0	0	1	1	0	1983	17	1983	4	1983	195	1983	11
Province of Alberta	129622	5	0	6	11	0	78539	0	78539	2	19	4	8	0	78539	158	78539	11	78539	6614	78539	30
Prairies	361070	5	1	10	16	2	165111	72	83329	2	20	6	9	0	83329	195	84176	16	83329	6977	84176	47
British Columbia	88554	3	8	1	10	8	88055	6	18857	1	4	1	13	5	19403	115	19200	67	19014	1543	14881	22
Yukon	5305	0	0	8	8	7	5238	4	N.A.	N.A.	N.A.	N.A.	N.A.	N.A.	N.A.	N.A.	N.A.	N.A.	N.A.	N.A.	N.A.	N.A.
Northwest Territories	1194	0	0	0	0	0	1146	0	1146	0	0	0	1	0	1146	12	1146	1	1146	326	1146	1
Nunavut	1124	0	0	0	0	0	1101	0	1101	3	1	0	0	0	1101	25	1101	5	1101	282	191	0
Territories	7623	0	0	8	8	7	7485	4	2247	3	1	0	1	0	2247	37	2247	6	2247	608	1337	1
CANADA	605760	11	9	33	51	22	365666	305	163299	28	37	40	33	14	162207	784	163745	107	157541	13451	134127	257

The data in the RVDSS report represent surveillance data available at the time of writing. Missing data are denoted by N.A.

Specimens from YT, NT and NU are sent to reference laboratories in other provinces and reported results reflect specimens identified as originating from YT, NT or NU.

Results from British Columbia comprise of specimens from the following sites: BC Children's and Women's Hospital, Children's and Women's Hospital Laboratory, Fraser Health Medical Microbiology Laboratory, Island Health, Providence Health Care, Powell River Hospital, St. Paul's Hospital, Vancouver General Hospital, Victoria General Hospital, BCCDC Public Health Laboratory, Interior Health Authority sites and Northern Health Authority sites.

Delays in the reporting of data may cause data to change retrospectively.

Due to reporting delays, the sum of weekly report totals do not add up to cumulative totals.

Influenza co-detections may cause the sum of A(H1N1)pdm09, A(H3), and A(UnS) positive results to exceed the sum of Total Flu A Positive results.

Figure 1: Number positive laboratory tests for other respiratory viruses by report week, Canada, 2020-21

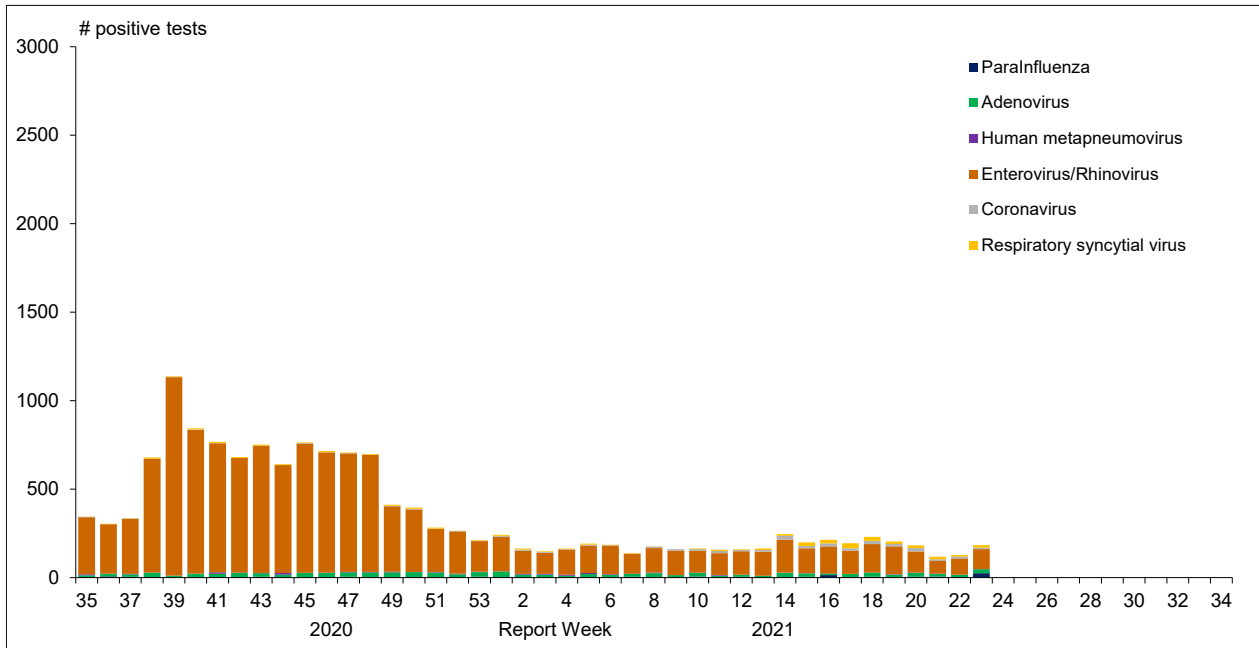


Figure 2 : Positive Influenza Tests (%) in Canada by Region by Week of Report

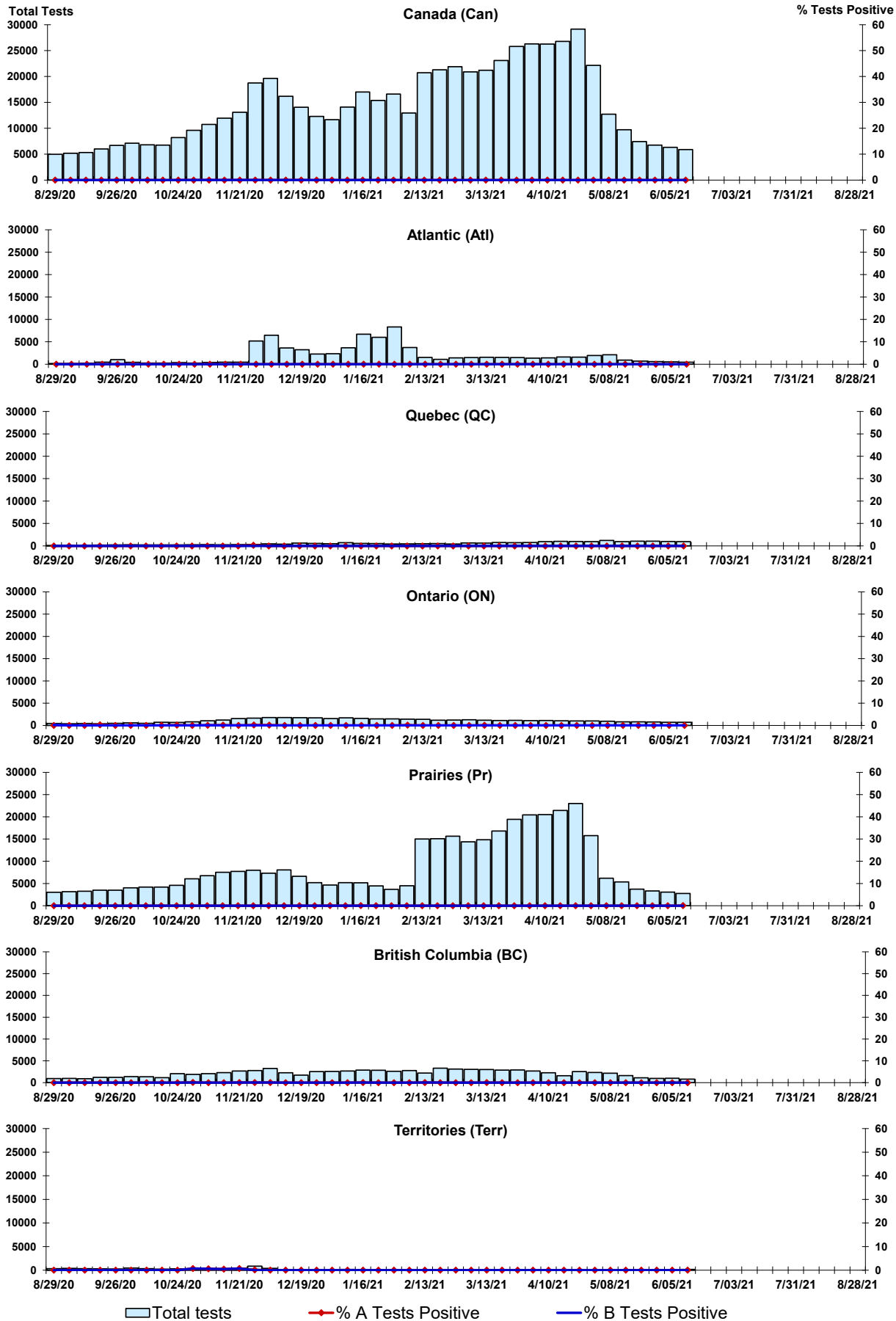


Figure 3: Positive Respiratory syncytial virus (RSV) Tests (%) in Canada by Region by Week of Report

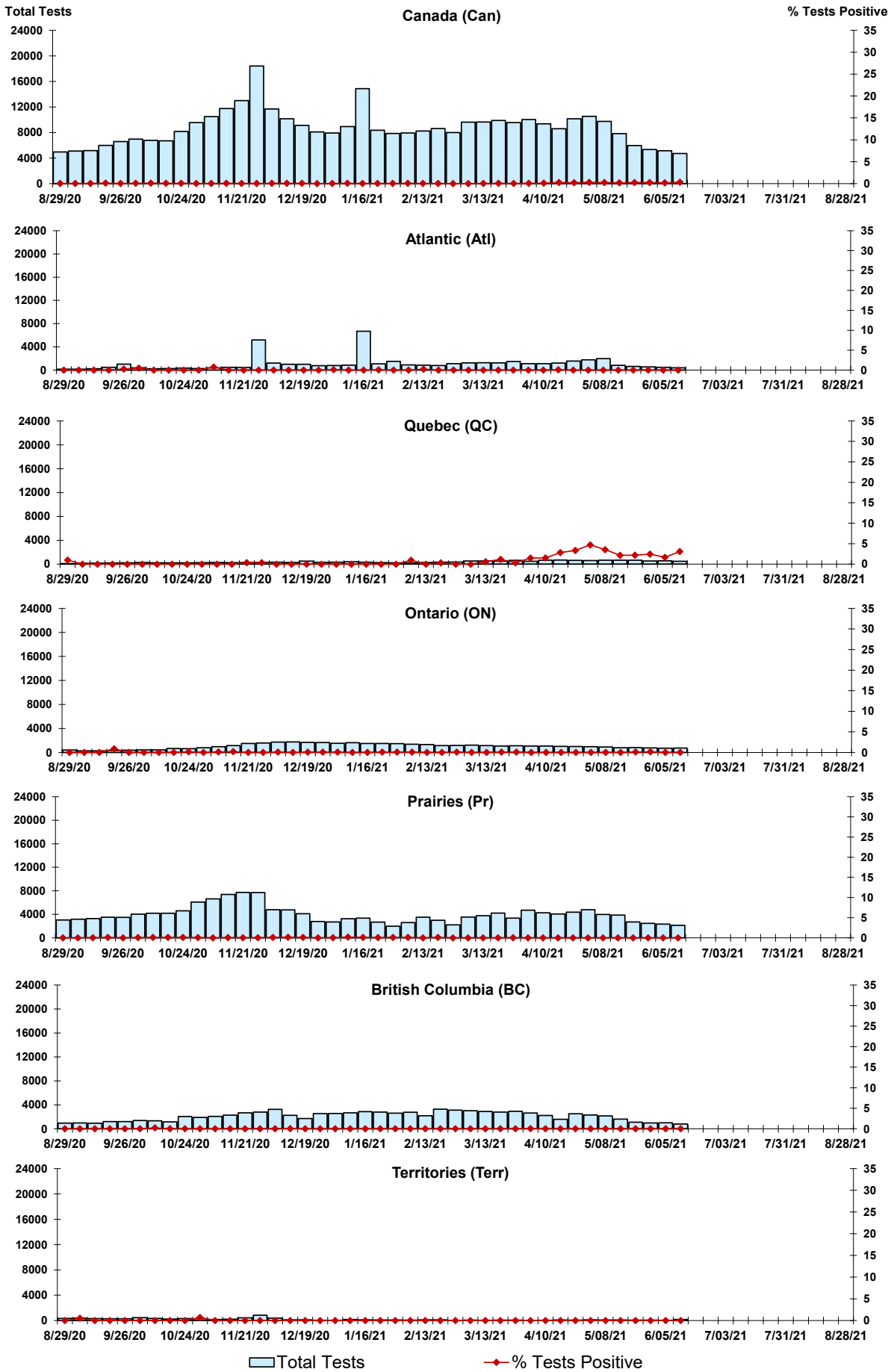
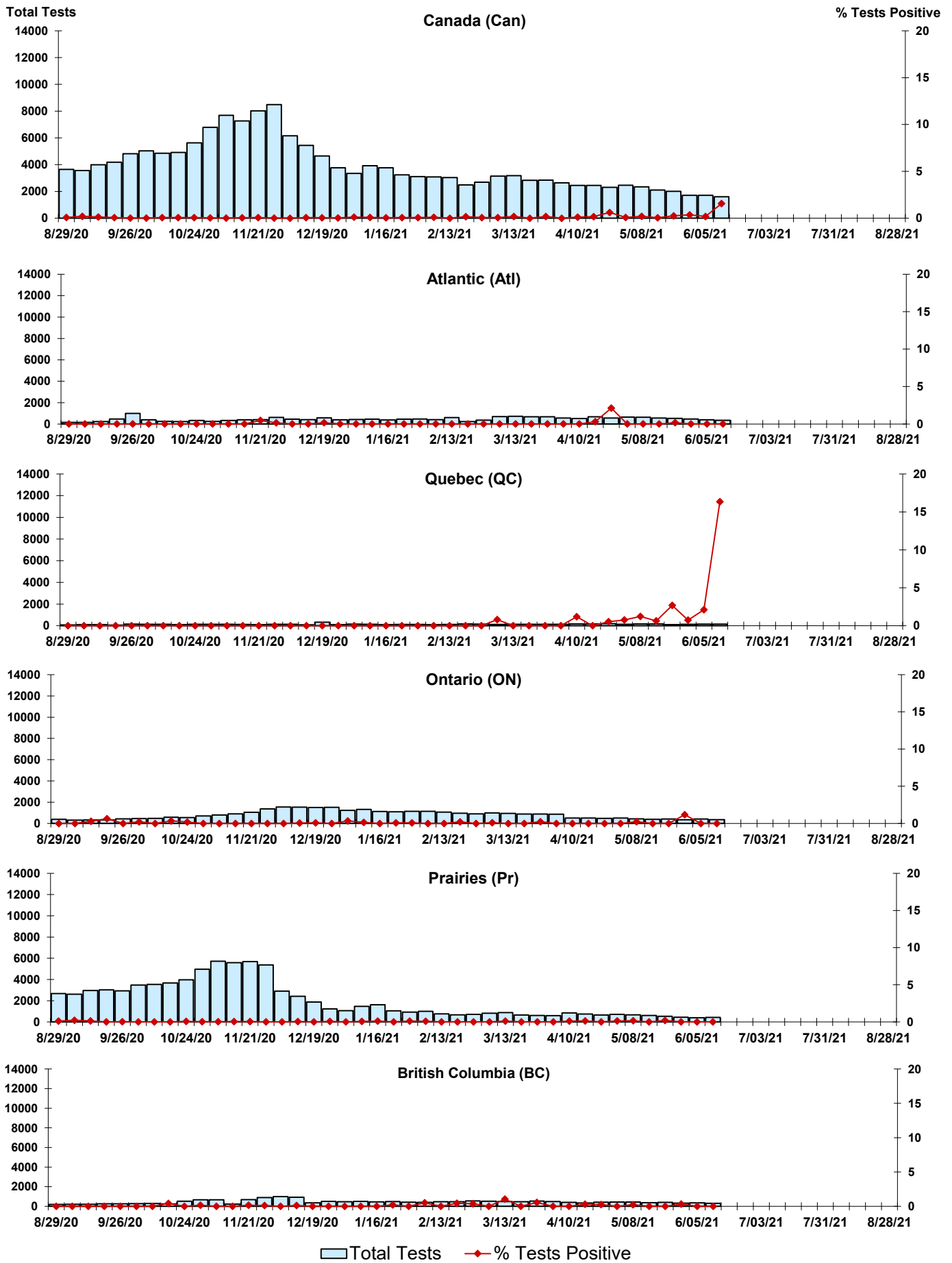


Figure 4: Positive Parainfluenza (PIV) Tests (%) in Canada by Region by Week of Report



Legend: Total Tests (light blue bar), % Tests Positive (red diamond)

Figure 5: Positive Adenovirus (adeno) Tests (%) in Canada by Region by Week of Report

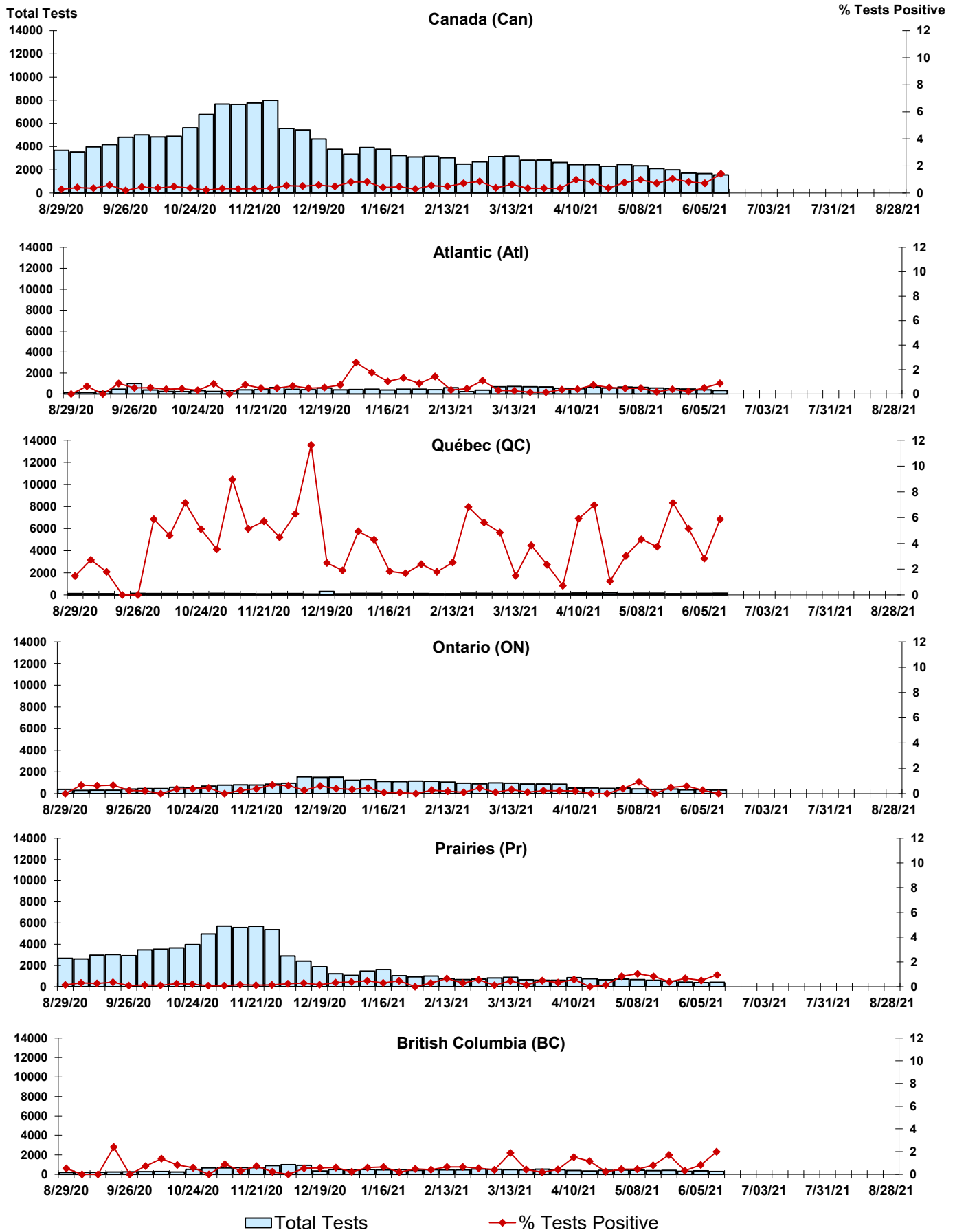
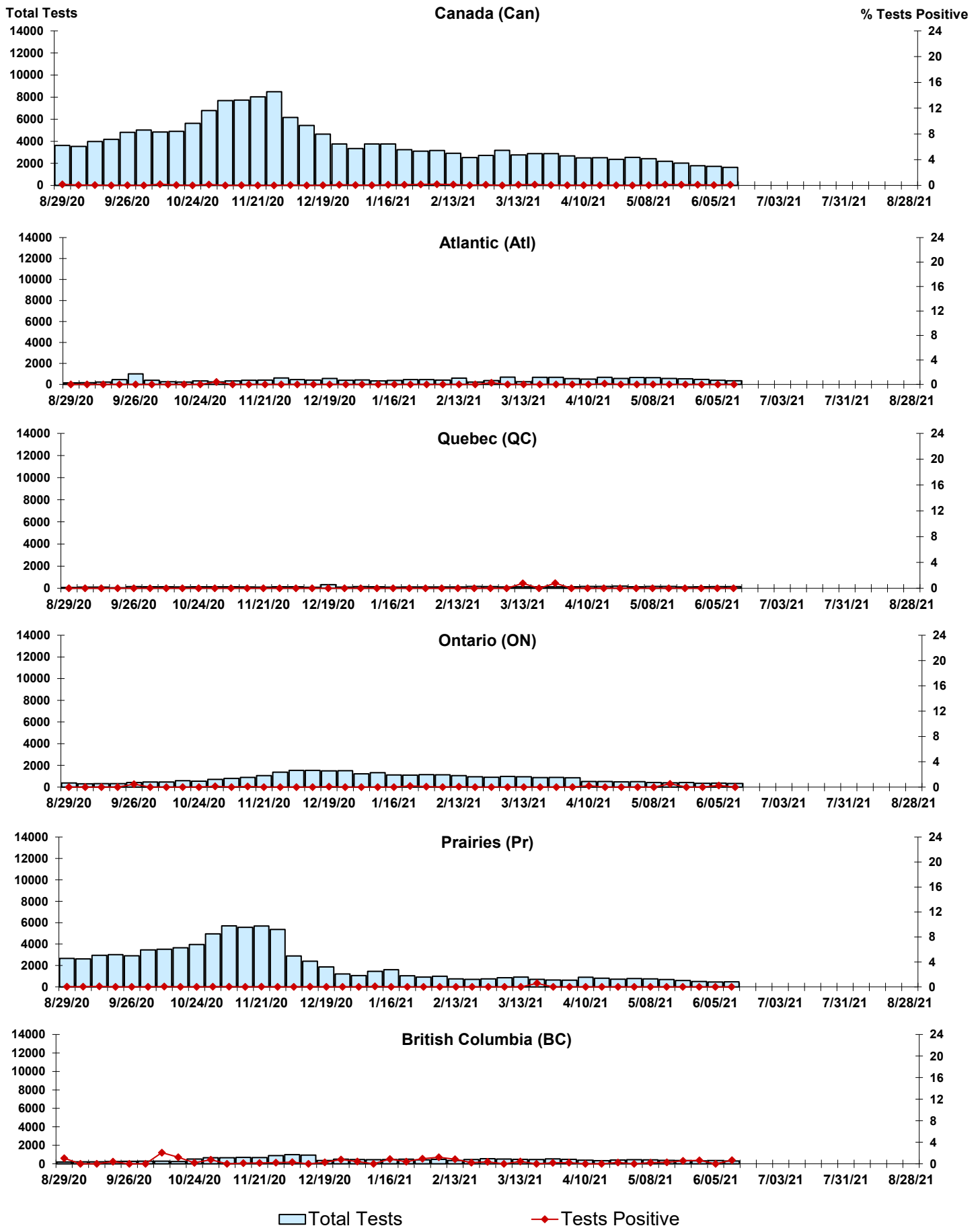


Figure 6: Positive human metapneumovirus (hMPV) Tests (%) in Canada by Region by Week of Report



Total Tests
 Tests Positive

Figure 7: Positive Enterovirus/Rhinovirus (entero/rhino) Tests (%) in Canada by Region by Week of Report

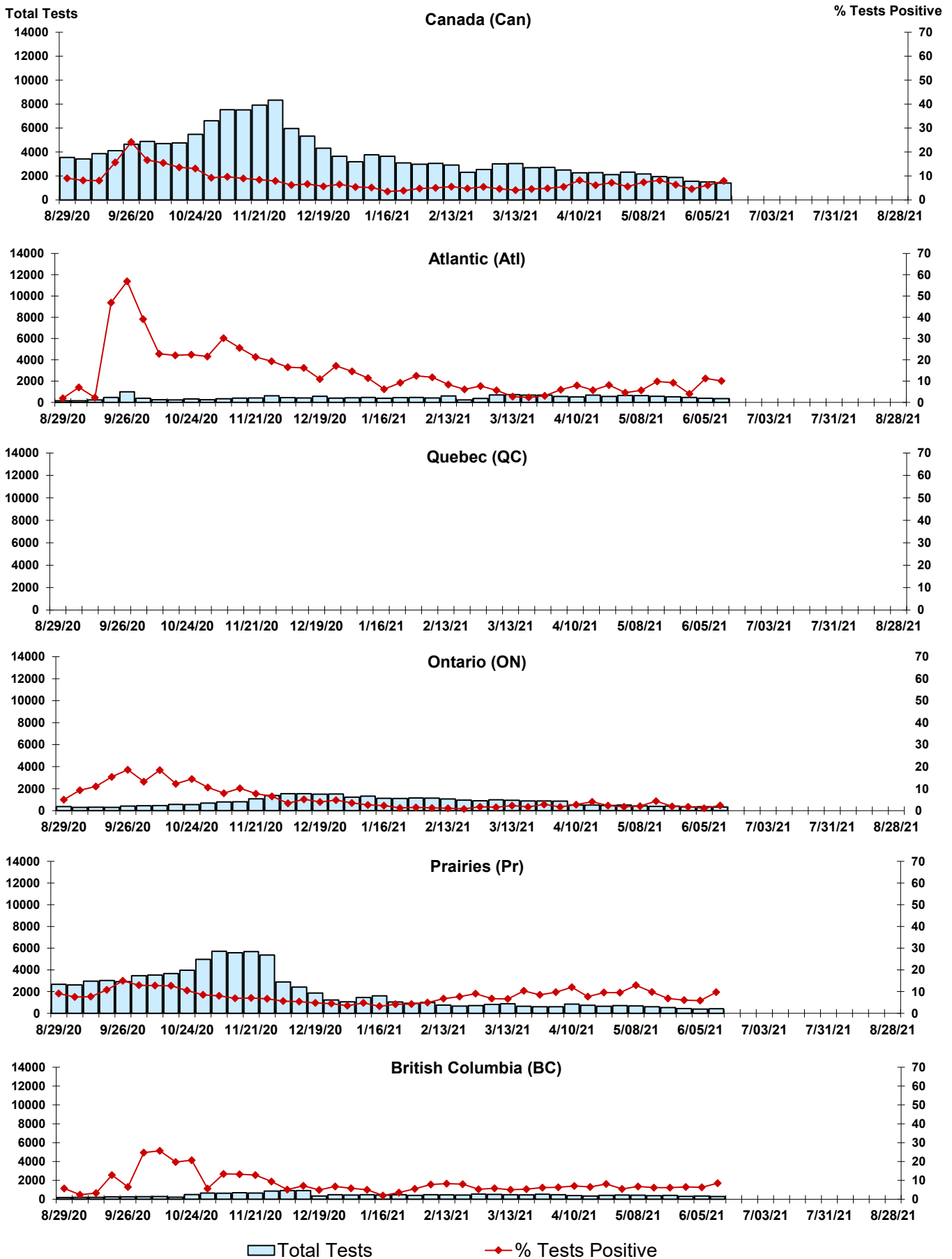
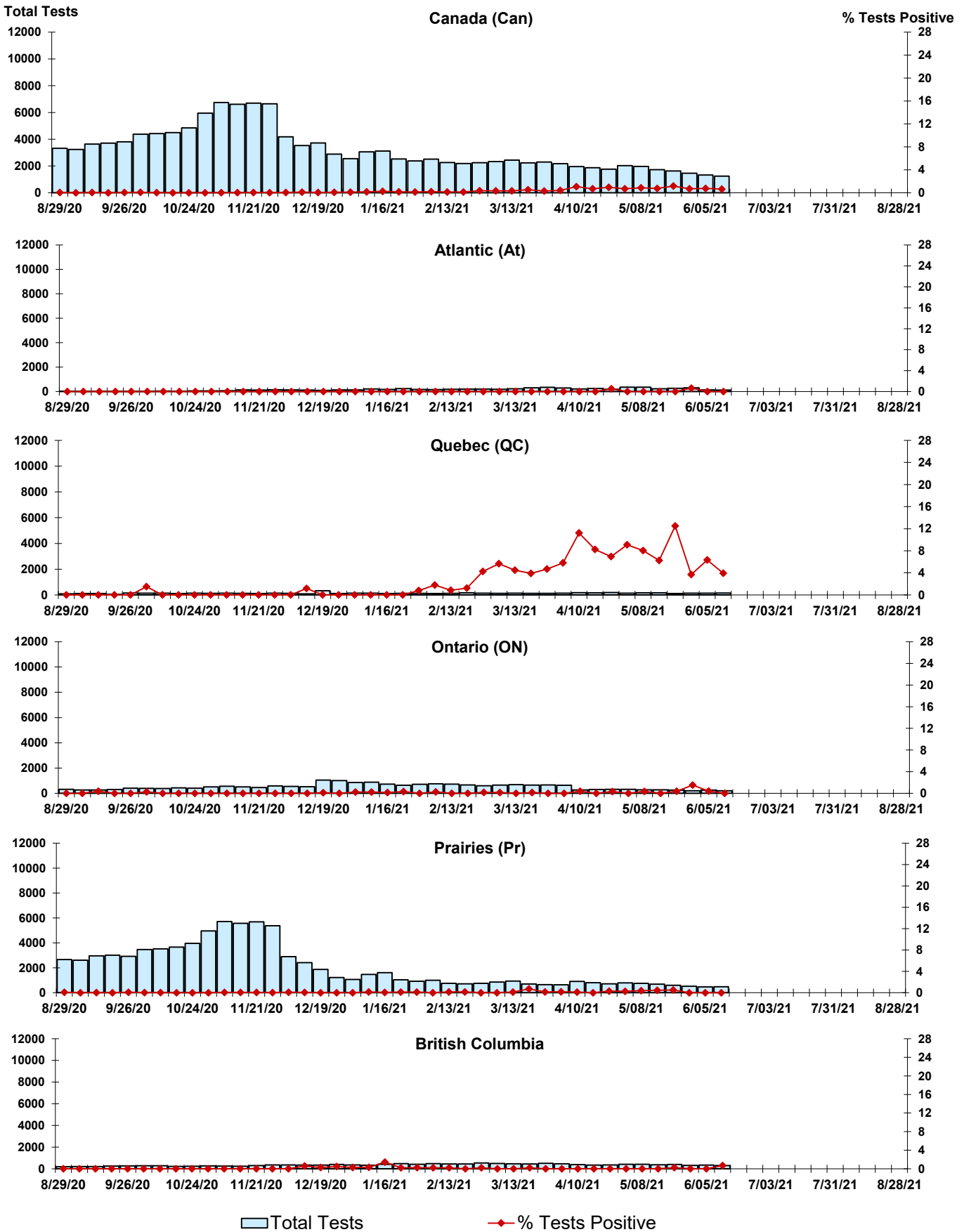


Figure 8: Positive Coronavirus (coron) Tests (%) in Canada by Region by Week of Report



Abbreviations:

A(H1N1)pdm09: Influenza A(H1N1)pdm09

A(H3): Influenza A(H3N2)

A (UnS): Influenza A (Unsubtyped)

Adeno: Adenovirus

CHEO: Children's Hospital of Eastern Ontario

Coron: Coronavirus

Enterovirus: Enterovirus

hMPV: human metapneumovirus

HSC: Health Sciences Centre

N.A.: Not Applicable

P.H.L.: Public Health Laboratory

P.H.O.L.: Public Health Ontario Laboratory

PIV: Parainfluenza

Rhino: Rhinovirus

RSV: Respiratory syncytial virus

UHN: University Health Network

Notes:

The data in the RVDSS report represent surveillance data available at the time of writing. Missing data are denoted by N.A.

Specimens from Yukon (YT), Northwest Territories (NT) and Nunavut (NU) are sent to reference laboratories in other provinces. Results reported for the Territories reflect the number of specimens that are identified as originating from YT, NT or NU.

Delays in the reporting of data may cause data to change retrospectively.

Due to reporting delays, the sum of weekly report totals do not add up to cumulative totals.