

# Respiratory Virus Report, Week 25 - ending June 26, 2021

The Respiratory Virus Detection Surveillance System collects data from select laboratories across Canada on the number of tests performed and the number of tests positive for influenza and other respiratory viruses. Data are reported on a weekly basis year-round to the Centre for Immunization and Respiratory Infectious Diseases (CIRID), Public Health Agency of Canada. These data are also summarized in the weekly FluWatch report.

In this Respiratory Virus Report, the number of detections of coronavirus reflects only seasonal human coronaviruses, not the novel pandemic coronavirus (SARS-CoV2) that causes COVID-19. For information on COVID-19, see the [Coronavirus disease \(COVID-19\): Outbreak](#)

**Table 1: Respiratory Virus Detections/Isolations for the week ending June 26, 2021 (Reporting Week 202125)**

Reporting Laboratory	Flu Tested	A(H1N1)pdm09 Positive	A(H3) Positive	A(UnS) Positive	Total Flu A Positive	Total Flu B Positive	RSV Tested	RSV Positive	PIV Tested	PIV 1 Positive	PIV 2 Positive	PIV 3 Positive	PIV 4 Positive	Other PIV Positive	Adeno Tested	Adeno Positive	hMPV Tested	hMPV Positive	Entero/Rhino Tested	Entero/Rhino Positive	Coron Tested	Coron Positive
Newfoundland	212	0	0	0	0	0	212	0	212	0	0	0	0	0	227	1	212	0	212	16	N.A.	N.A.
Prince Edward Island	48	0	0	0	0	0	48	0	48	0	0	0	0	0	48	1	48	0	48	2	48	0
Nova Scotia	61	0	0	0	0	0	61	0	60	0	0	0	0	0	60	1	60	0	60	1	60	0
New Brunswick	46	0	0	0	0	0	65	0	16	0	0	0	0	0	16	1	16	0	16	4	16	0
<b>Atlantic</b>	<b>367</b>	<b>0</b>	<b>0</b>	<b>0</b>	<b>0</b>	<b>0</b>	<b>386</b>	<b>0</b>	<b>336</b>	<b>0</b>	<b>0</b>	<b>0</b>	<b>0</b>	<b>0</b>	<b>351</b>	<b>4</b>	<b>336</b>	<b>0</b>	<b>336</b>	<b>23</b>	<b>124</b>	<b>0</b>
Région Nord-Est	420	0	0	0	0	0	21	0	0	0	0	0	0	0	0	0	0	0	N.A.	N.A.	0	0
Québec-Chaudière-Appalaches	4	0	0	0	0	0	6	0	28	0	0	7	0	0	28	1	28	0	N.A.	N.A.	28	1
Centre-du-Québec	6	0	0	0	0	0	6	0	14	0	0	2	0	0	14	0	14	0	N.A.	N.A.	14	0
Montréal-Laval	500	0	0	0	0	0	500	12	140	13	0	18	0	0	140	6	140	2	N.A.	N.A.	140	3
Ouest du Québec	5	0	0	0	0	0	5	0	0	0	0	0	0	0	0	0	0	0	N.A.	N.A.	0	0
Montérégie	15	0	0	0	0	0	15	0	0	0	0	0	0	0	0	0	0	0	N.A.	N.A.	0	0
<b>Province of Québec</b>	<b>950</b>	<b>0</b>	<b>0</b>	<b>0</b>	<b>0</b>	<b>0</b>	<b>553</b>	<b>12</b>	<b>182</b>	<b>13</b>	<b>0</b>	<b>27</b>	<b>0</b>	<b>0</b>	<b>182</b>	<b>7</b>	<b>182</b>	<b>2</b>	<b>N.A.</b>	<b>N.A.</b>	<b>182</b>	<b>4</b>
P.H.O.L. - Ottawa	N.A.	N.A.	N.A.	N.A.	N.A.	N.A.	N.A.	N.A.	N.A.	N.A.	N.A.	N.A.	N.A.	N.A.	N.A.	N.A.	N.A.	N.A.	N.A.	N.A.	N.A.	N.A.
CHEO - Ottawa	49	0	0	0	0	0	49	0	49	0	0	0	0	0	18	0	18	0	18	3	18	0
P.H.O.L. - Kingston	N.A.	N.A.	N.A.	N.A.	N.A.	N.A.	N.A.	N.A.	N.A.	N.A.	N.A.	N.A.	N.A.	N.A.	N.A.	N.A.	N.A.	N.A.	N.A.	N.A.	N.A.	N.A.
UHN / Mount Sinai Hospital	399	0	0	0	0	0	399	1	37	0	0	0	0	0	37	0	37	0	37	2	37	0
P.H.O.L. - Toronto	N.A.	N.A.	N.A.	N.A.	N.A.	N.A.	N.A.	N.A.	N.A.	N.A.	N.A.	N.A.	N.A.	N.A.	N.A.	N.A.	N.A.	N.A.	N.A.	N.A.	N.A.	N.A.
Sick Kids Hospital - Toronto	N.A.	N.A.	N.A.	N.A.	N.A.	N.A.	N.A.	N.A.	N.A.	N.A.	N.A.	N.A.	N.A.	N.A.	N.A.	N.A.	N.A.	N.A.	N.A.	N.A.	N.A.	N.A.
Sunnybrook & Women's College HSC	N.A.	N.A.	N.A.	N.A.	N.A.	N.A.	N.A.	N.A.	N.A.	N.A.	N.A.	N.A.	N.A.	N.A.	N.A.	N.A.	N.A.	N.A.	N.A.	N.A.	N.A.	N.A.
P.H.O.L. - Sault Ste. Marie	N.A.	N.A.	N.A.	N.A.	N.A.	N.A.	N.A.	N.A.	N.A.	N.A.	N.A.	N.A.	N.A.	N.A.	N.A.	N.A.	N.A.	N.A.	N.A.	N.A.	N.A.	N.A.
P.H.O.L. - Timmins	N.A.	N.A.	N.A.	N.A.	N.A.	N.A.	N.A.	N.A.	N.A.	N.A.	N.A.	N.A.	N.A.	N.A.	N.A.	N.A.	N.A.	N.A.	N.A.	N.A.	N.A.	N.A.
St. Joseph's - London	N.A.	N.A.	N.A.	N.A.	N.A.	N.A.	N.A.	N.A.	N.A.	N.A.	N.A.	N.A.	N.A.	N.A.	N.A.	N.A.	N.A.	N.A.	N.A.	N.A.	N.A.	N.A.
P.H.O.L. - London	N.A.	N.A.	N.A.	N.A.	N.A.	N.A.	N.A.	N.A.	N.A.	N.A.	N.A.	N.A.	N.A.	N.A.	N.A.	N.A.	N.A.	N.A.	N.A.	N.A.	N.A.	N.A.
P.H.O.L. - Orillia	N.A.	N.A.	N.A.	N.A.	N.A.	N.A.	N.A.	N.A.	N.A.	N.A.	N.A.	N.A.	N.A.	N.A.	N.A.	N.A.	N.A.	N.A.	N.A.	N.A.	N.A.	N.A.
P.H.O.L. - Thunder Bay	N.A.	N.A.	N.A.	N.A.	N.A.	N.A.	N.A.	N.A.	N.A.	N.A.	N.A.	N.A.	N.A.	N.A.	N.A.	N.A.	N.A.	N.A.	N.A.	N.A.	N.A.	N.A.
P.H.O.L. - Sudbury	N.A.	N.A.	N.A.	N.A.	N.A.	N.A.	N.A.	N.A.	N.A.	N.A.	N.A.	N.A.	N.A.	N.A.	N.A.	N.A.	N.A.	N.A.	N.A.	N.A.	N.A.	N.A.
P.H.O.L. - Hamilton	N.A.	N.A.	N.A.	N.A.	N.A.	N.A.	N.A.	N.A.	N.A.	N.A.	N.A.	N.A.	N.A.	N.A.	N.A.	N.A.	N.A.	N.A.	N.A.	N.A.	N.A.	N.A.
P.H.O.L. - Peterborough	N.A.	N.A.	N.A.	N.A.	N.A.	N.A.	N.A.	N.A.	N.A.	N.A.	N.A.	N.A.	N.A.	N.A.	N.A.	N.A.	N.A.	N.A.	N.A.	N.A.	N.A.	N.A.
St. Joseph's - Hamilton	141	0	0	0	0	0	141	0	141	0	0	0	0	0	141	0	141	0	141	2	0	0
<b>Province of Ontario</b>	<b>589</b>	<b>0</b>	<b>0</b>	<b>0</b>	<b>0</b>	<b>0</b>	<b>589</b>	<b>1</b>	<b>227</b>	<b>0</b>	<b>0</b>	<b>0</b>	<b>0</b>	<b>0</b>	<b>196</b>	<b>0</b>	<b>196</b>	<b>0</b>	<b>196</b>	<b>7</b>	<b>55</b>	<b>0</b>
Province of Manitoba	1281	0	0	0	0	0	1281	0	6	0	0	0	0	0	6	0	64	0	6	0	64	0
Province of Saskatchewan	50	0	0	0	0	0	50	0	40	0	0	0	0	0	40	0	40	0	40	7	40	1
Province of Alberta	1071	0	0	0	0	0	347	0	347	0	1	0	1	0	347	2	347	0	347	63	347	1
<b>Prairies</b>	<b>2402</b>	<b>0</b>	<b>0</b>	<b>0</b>	<b>0</b>	<b>0</b>	<b>1678</b>	<b>0</b>	<b>393</b>	<b>0</b>	<b>1</b>	<b>0</b>	<b>1</b>	<b>0</b>	<b>393</b>	<b>2</b>	<b>451</b>	<b>0</b>	<b>393</b>	<b>70</b>	<b>451</b>	<b>2</b>
<b>British Columbia</b>	<b>773</b>	<b>0</b>	<b>0</b>	<b>0</b>	<b>0</b>	<b>0</b>	<b>773</b>	<b>0</b>	<b>317</b>	<b>0</b>	<b>0</b>	<b>0</b>	<b>0</b>	<b>0</b>	<b>317</b>	<b>3</b>	<b>317</b>	<b>0</b>	<b>307</b>	<b>27</b>	<b>302</b>	<b>0</b>
Yukon	621	0	0	0	0	0	621	0	N.A.	N.A.	N.A.	N.A.	N.A.	N.A.	N.A.	N.A.	N.A.	N.A.	N.A.	N.A.	N.A.	N.A.
Northwest Territories	5	0	0	0	0	0	2	0	2	0	0	0	0	0	2	0	2	0	2	0	2	0
Nunavut	0	0	0	0	0	0	0	0	0	0	0	0	0	0	0	0	0	0	0	0	0	0
<b>Territories</b>	<b>626</b>	<b>0</b>	<b>0</b>	<b>0</b>	<b>0</b>	<b>0</b>	<b>623</b>	<b>0</b>	<b>2</b>	<b>0</b>	<b>0</b>	<b>0</b>	<b>0</b>	<b>0</b>	<b>2</b>	<b>0</b>	<b>2</b>	<b>0</b>	<b>2</b>	<b>0</b>	<b>2</b>	<b>0</b>
<b>CANADA</b>	<b>5707</b>	<b>0</b>	<b>0</b>	<b>0</b>	<b>0</b>	<b>0</b>	<b>4602</b>	<b>13</b>	<b>1457</b>	<b>13</b>	<b>1</b>	<b>27</b>	<b>1</b>	<b>0</b>	<b>1441</b>	<b>16</b>	<b>1484</b>	<b>2</b>	<b>1234</b>	<b>127</b>	<b>1116</b>	<b>6</b>

The data in the RVSS report represent surveillance data available at the time of writing. Missing data are denoted by N.A.

Specimens from Yukon (YT), Northwest Territories (NT) and Nunavut (NU) are sent to reference laboratories in other provinces and reported results reflect specimens identified as originating from YT, NT or NU.

Results from British Columbia comprise of specimens from the following sites: BC Children's and Women's Hospital, Fraser Health Medical Microbiology Laboratory, Island Health, Providence Health Care, Powell River Hospital, St. Paul's Hospital, Vancouver General Hospital, Victoria General Hospital, BCCDC Public Health Laboratory, Interior Health Authority sites and Northern Health Authority sites.

Delays in the reporting of data may cause data to change retrospectively.

Influenza co-detections may cause the sum of A(H1N1)pdm09, A(H3), and A(UnS) positive results to exceed the sum of Total Flu A Positive results.

**Table 2: Respiratory Virus Detections/Isolations for the period August 23, 2020 - June 26, 2021 (Reporting Weeks 202035-202125)**

Reporting Laboratory	Flu Tested	A(H1N1)pdm09 Positive	A(H3) Positive	A(UnS) Positive	Total Flu A Positive	Total Flu B Positive	RSV Tested	RSV Positive	PIV Tested	PIV 1 Positive	PIV 2 Positive	PIV 3 Positive	PIV 4 Positive	Other PIV Positive	Adeno Tested	Adeno Positive	hMPV Tested	hMPV Positive	Entero/Rhino Tested	Entero/Rhino Positive	Coron Tested	Coron Positive
Newfoundland	13265	0	0	0	0	0	13264	10	13264	1	0	3	0	0	13292	54	12677	2	13265	2218	N.A.	N.A.
Prince Edward Island	4069	0	0	0	0	0	4069	4	4065	3	0	0	1	0	4065	40	4065	0	4065	468	4065	1
Nova Scotia	8508	0	0	0	0	0	8511	0	1366	0	10	0	1	0	1366	16	1366	1	1366	87	1393	0
New Brunswick	54494	0	0	0	1	20417	0	1559	0	0	0	0	0	0	1550	11	1550	0	1550	62	1505	2
<b>Atlantic</b>	<b>80336</b>	<b>0</b>	<b>0</b>	<b>0</b>	<b>0</b>	<b>1</b>	<b>46261</b>	<b>14</b>	<b>20254</b>	<b>4</b>	<b>10</b>	<b>3</b>	<b>2</b>	<b>0</b>	<b>20273</b>	<b>121</b>	<b>19658</b>	<b>3</b>	<b>20246</b>	<b>2835</b>	<b>6963</b>	<b>3</b>
Région Nord-Est	8624	0	0	0	0	0	1171	1	7	0	0	0	0	0	7	1	7	0	N.A.	N.A.	7	0
Québec-Chaudière-Appalaches	791	0	0	1	1	0	910	2	735	0	0	10	0	0	737	41	732	0	N.A.	N.A.	715	30
Centre-du-Québec	938	0	0	0	0	0	946	2	413	0	0	5	0	0	411	22	413	0	N.A.	N.A.	410	16
Montréal-Laval	11114	0	0	0	0	0	10159	211	4809	43	0	59	0	0	4863	181	4793	4	N.A.	N.A.	4793	124
Ouest du Québec	2536	0	0	0	0	0	2479	0	0	0	0	0	0	0	0	0	0	0	N.A.	N.A.	0	0
Montérégie	1242	0	0	0	0	0	1242	1	0	0	0	0	0	0	0	0	0	0	N.A.	N.A.	0	0
<b>Province of Québec</b>	<b>25245</b>	<b>0</b>	<b>0</b>	<b>1</b>	<b>1</b>	<b>0</b>	<b>16907</b>	<b>217</b>	<b>5964</b>	<b>43</b>	<b>0</b>	<b>74</b>	<b>0</b>	<b>0</b>	<b>6018</b>	<b>245</b>	<b>5945</b>	<b>4</b>	<b>N.A.</b>	<b>N.A.</b>	<b>5925</b>	<b>170</b>
P.H.O.L. - Ottawa	614	0	0	0	0	0	614	1	513	0	0	0	0	0	513	0	512	0	513	24	512	1
CHEO - Ottawa	5256	0	0	1	1	1	4853	5	1082	0	0	0	0	0	957	15	957	1	957	102	957	3
P.H.O.L. - Kingston	879	0	0	1	1	0	879	0	576	0	0	0	0	0	576	4	570	0	576	108	570	0
UHN / Mount Sinai Hospital	15513	2	0	2	4	1	15444	7	10621	3	2	3	8	0	8995	10	10581	10	10378	105	8417	6
P.H.O.L. - Toronto	6751	0	0	0	0	0	6748	3	5805	0	0	0	0	3	5806	16	5803	2	5805	162	5803	5
Sick Kids Hospital - Toronto	1237	0	0	0	0	0	0	0	1237	0	0	0	0	0	1237	18	1237	0	1237	119	1237	1
Sunnybrook & Women's College HSC	0	0	0	0	0	0	0	0	0	0	0	0	0	0	0	0	0	0	0	0	0	0
P.H.O.L. - Sault Ste. Marie	176	0	0	2	2	0	174	0	100	0	0	0	0	0	100	0	100	0	100	6	100	0
P.H.O.L. - Timmins	627	0	0	0	0	0	627	0	170	0	0	0	0	0	170	0	169	0	170	31	169	0
St. Joseph's - London	218	0	0	0	0	0	218	0	55	0	0	0	0	0	55	0	55	0	91	8	36	0
P.H.O.L. - London	1951	1	0	5	6	2	1941	0	1316	0	0	0	0	2	1316	2	1310	0	1316	127	1310	3
P.H.O.L. - Orillia	406	0	0	1	1	0	404	0	201	0	0	0	0	0	201	1	201	0	201	12	201	0
P.H.O.L. - Thunder Bay	417	0	0	0	0	0	417	0	398	0	0	0	0	0	399	3	398	0	398	138	398	0
P.H.O.L. - Sudbury	511	0	0	0	0	0	509	0	343	0	0	0	0	4	343	3	343	0	343	30	343	4
P.H.O.L. - Hamilton	1541	0	0	0	0	0	1486	1	1235	0	0	0	0	0	1235	2	1235	0	1235	101	1235	0
P.H.O.L. - Peterborough	542	0	0	1	1	0	496	0	388	0	0	0	0	0	388	0	387	0	388	24	387	0
St. Joseph's - Hamilton	10205	0	0	0	0	0	10205	3	10205	0	0	2	0	0	10205	23	10205	0	10205	463	0	0
<b>Province of Ontario</b>	<b>46844</b>	<b>3</b>	<b>0</b>	<b>13</b>	<b>16</b>	<b>4</b>	<b>45015</b>	<b>20</b>	<b>34245</b>	<b>3</b>	<b>2</b>	<b>5</b>	<b>8</b>	<b>9</b>	<b>32496</b>	<b>97</b>	<b>34063</b>	<b>13</b>	<b>33913</b>	<b>1560</b>	<b>21675</b>	<b>23</b>
Manitoba	62226	0	1	3	4	2	62216	68	2826	0	1	1	0	0	2826	20	3791	1	2826	169	3791	6
Province of Saskatchewan	171953	0	0	1	1	0	27086	4	2046	0	0	1	1	0	2046	17	2046	4	2046	207	2046	13
Province of Alberta	131641	7	0	6	13	0	79228	0	79228	2	20	4	9	0	79228	161	79228	11	79228	6725	79228	31
<b>Prairies</b>	<b>365820</b>	<b>7</b>	<b>1</b>	<b>10</b>	<b>18</b>	<b>2</b>	<b>168530</b>	<b>72</b>	<b>84100</b>	<b>2</b>	<b>21</b>	<b>6</b>	<b>10</b>	<b>0</b>	<b>84100</b>	<b>198</b>	<b>85065</b>	<b>16</b>	<b>84100</b>	<b>7101</b>	<b>85065</b>	<b>50</b>
<b>British Columbia</b>	<b>90119</b>	<b>3</b>	<b>8</b>	<b>1</b>	<b>10</b>	<b>8</b>	<b>89620</b>	<b>6</b>	<b>19531</b>	<b>1</b>	<b>4</b>	<b>1</b>	<b>13</b>	<b>5</b>	<b>20077</b>	<b>124</b>	<b>19874</b>	<b>67</b>	<b>19671</b>	<b>1593</b>	<b>15531</b>	<b>22</b>
Yukon	6576	0	0	8	8	7	6501	4	N.A.	N.A.	N.A.	N.A.	N.A.	N.A.	N.A.	N.A.	N.A.	N.A.	N.A.	N.A.	N.A.	N.A.
Northwest Territories	1204	0	0	0	0	0	1151	0	1151	0	0	0	1	0	1151	12	1151	1	1151	326	1151	1
Nunavut	1125	0	0	0	0	0	1102	0	1102	3	1	0	0	0	1102	25	1102	5	1102	282	191	0
<b>Territories</b>	<b>8905</b>	<b>0</b>	<b>0</b>	<b>8</b>	<b>8</b>	<b>7</b>	<b>8754</b>	<b>4</b>	<b>2253</b>	<b>3</b>	<b>1</b>	<b>0</b>	<b>1</b>	<b>0</b>	<b>2253</b>	<b>37</b>	<b>2253</b>	<b>6</b>	<b>2253</b>	<b>608</b>	<b>1342</b>	<b>1</b>
<b>CANADA</b>	<b>617269</b>	<b>13</b>	<b>9</b>	<b>33</b>	<b>53</b>	<b>22</b>	<b>375087</b>	<b>333</b>	<b>166347</b>	<b>56</b>	<b>38</b>	<b>89</b>	<b>34</b>	<b>14</b>	<b>165217</b>	<b>822</b>	<b>166858</b>	<b>109</b>	<b>160183</b>	<b>13697</b>	<b>136501</b>	<b>269</b>

The data in the RVDSS report represent surveillance data available at the time of writing. Missing data are denoted by N.A.

Specimens from YT, NT and NU are sent to reference laboratories in other provinces and reported results reflect specimens identified as originating from YT, NT or NU.

Results from British Columbia comprise of specimens from the following sites: BC Children's and Women's Hospital, Children's and Women's Hospital Laboratory, Fraser Health Medical Microbiology Laboratory, Island Health, Providence Health Care, Powell River Hospital, St. Paul's Hospital, Vancouver General Hospital, Victoria General Hospital, BCCDC Public Health Laboratory, Interior Health Authority sites and Northern Health Authority sites.

Delays in the reporting of data may cause data to change retrospectively.

Due to reporting delays, the sum of weekly report totals do not add up to cumulative totals.

Influenza co-detections may cause the sum of A(H1N1)pdm09, A(H3), and A(UnS) positive results to exceed the sum of Total Flu A Positive results.

Figure 1: Number positive laboratory tests for other respiratory viruses by report week, Canada, 2020-21

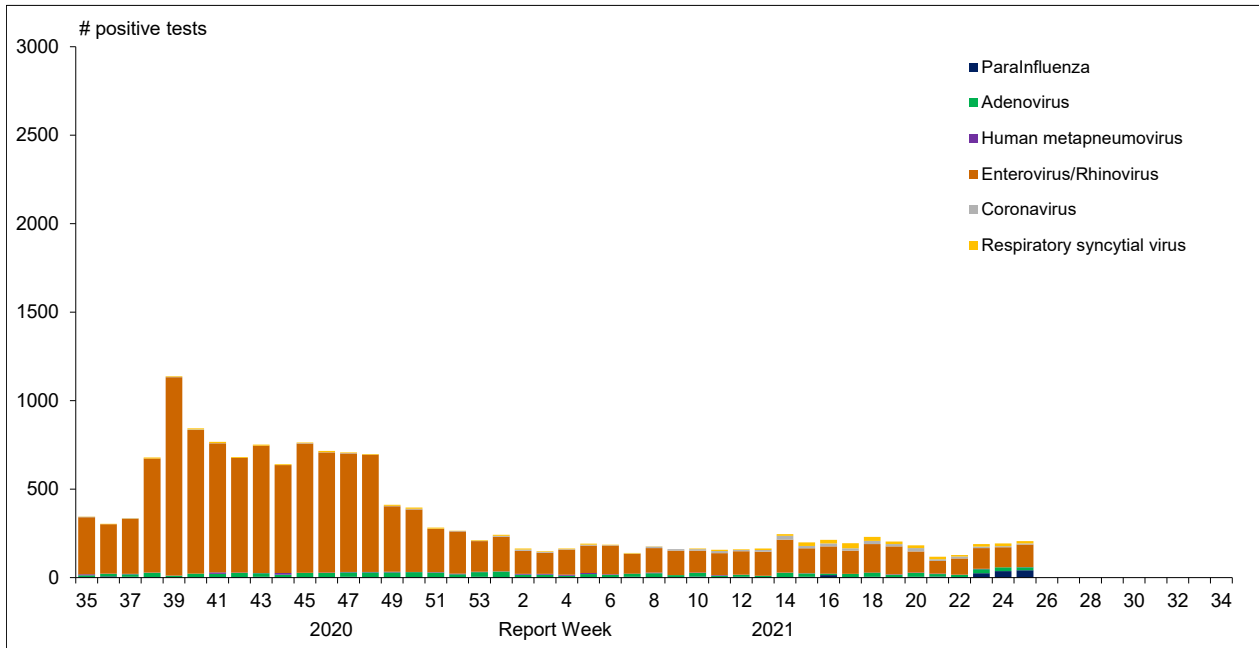


Figure 2 : Positive Influenza Tests (%) in Canada by Region by Week of Report

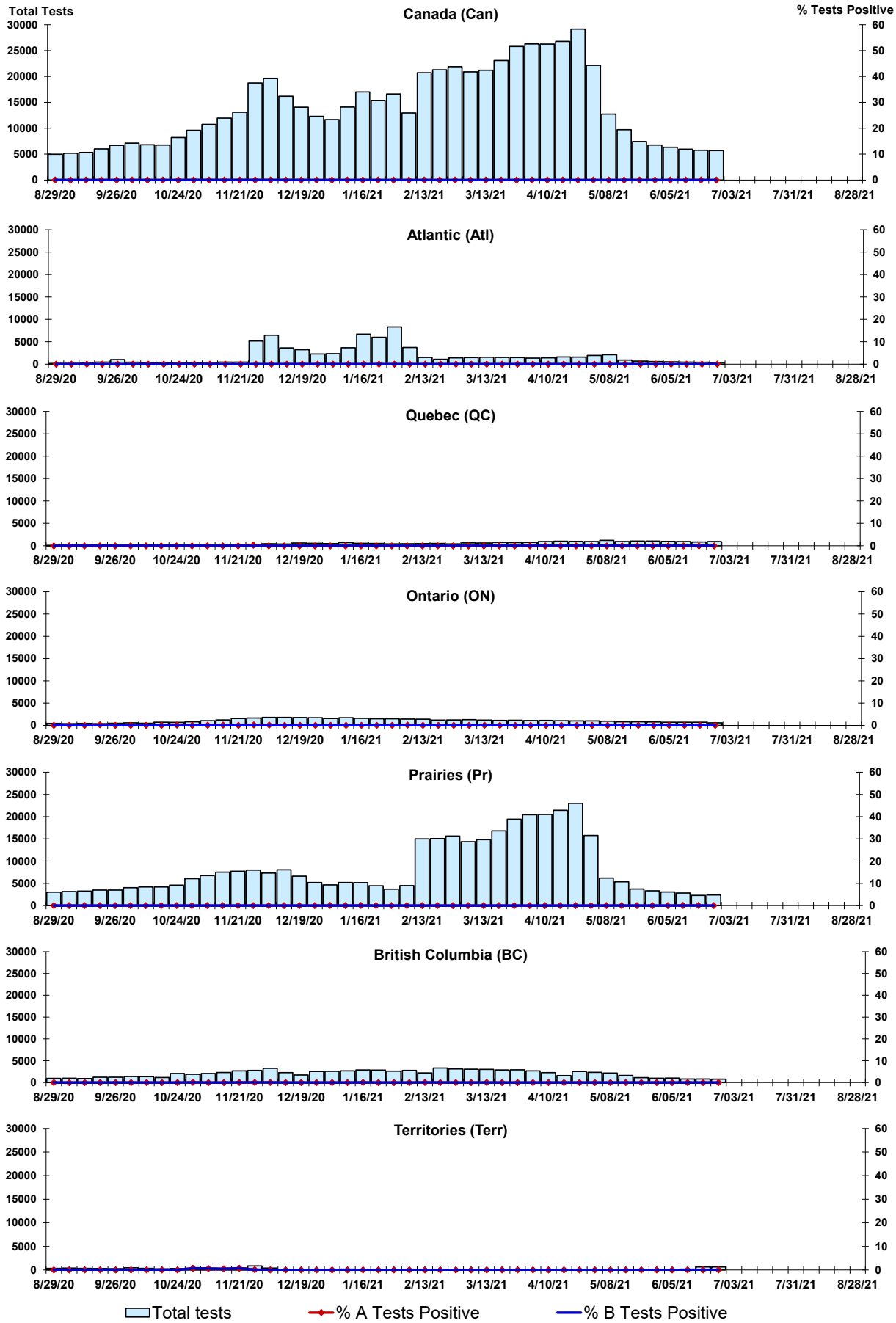


Figure 3: Positive Respiratory syncytial virus (RSV) Tests (%) in Canada by Region by Week of Report

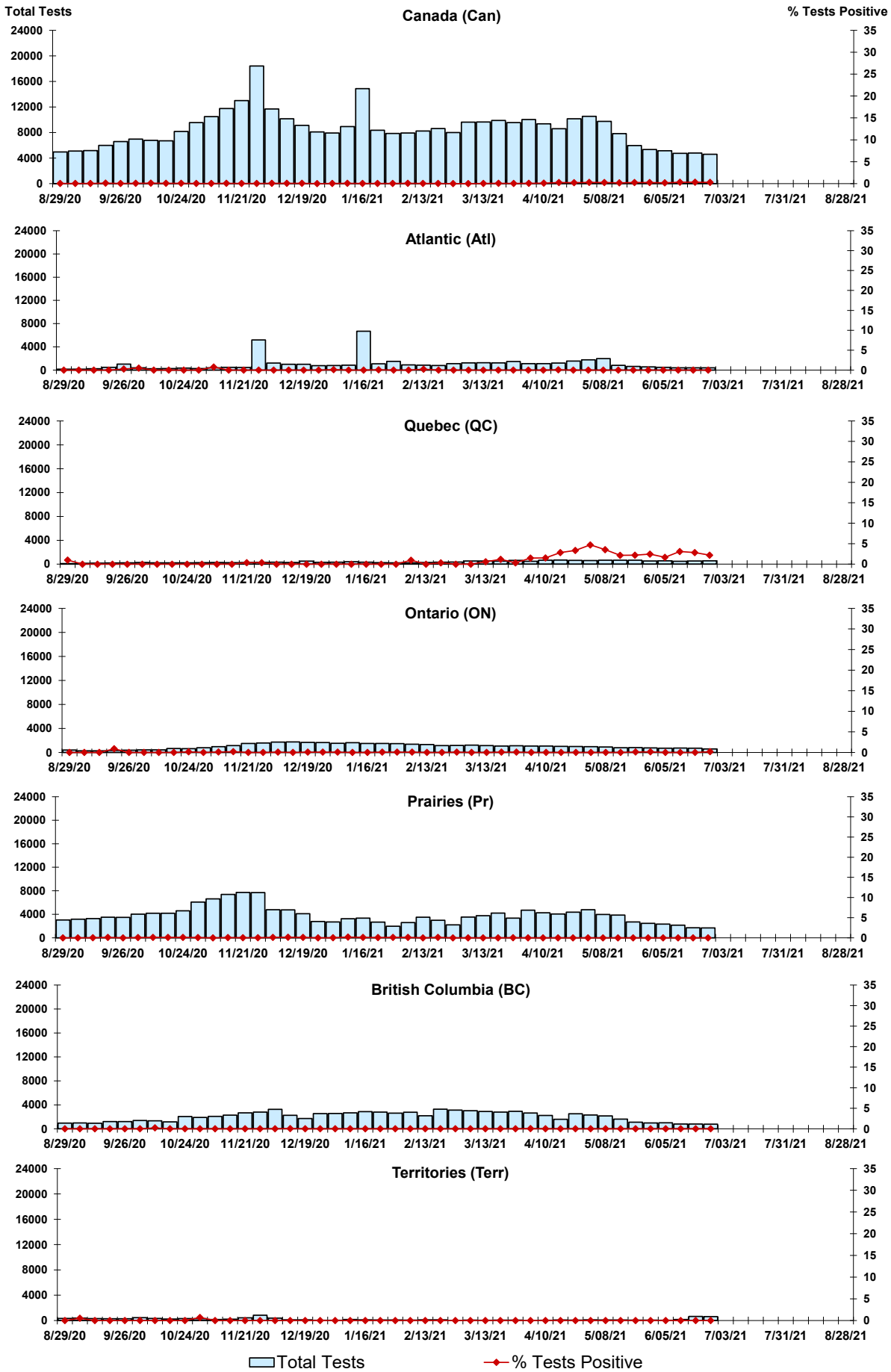


Figure 4: Positive Parainfluenza (PIV) Tests (%) in Canada by Region by Week of Report

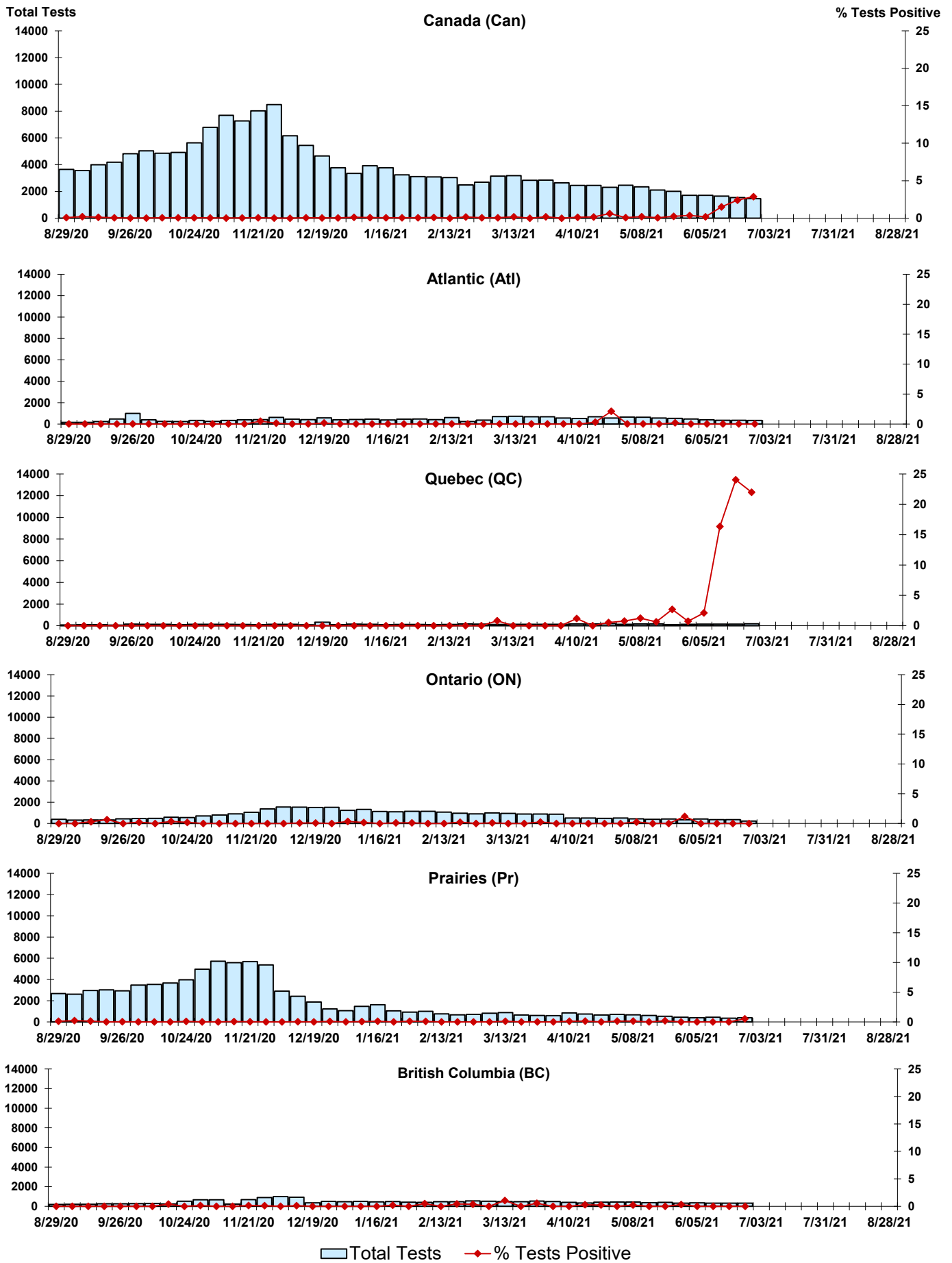


Figure 5: Positive Adenovirus (adeno) Tests (%) in Canada by Region by Week of Report

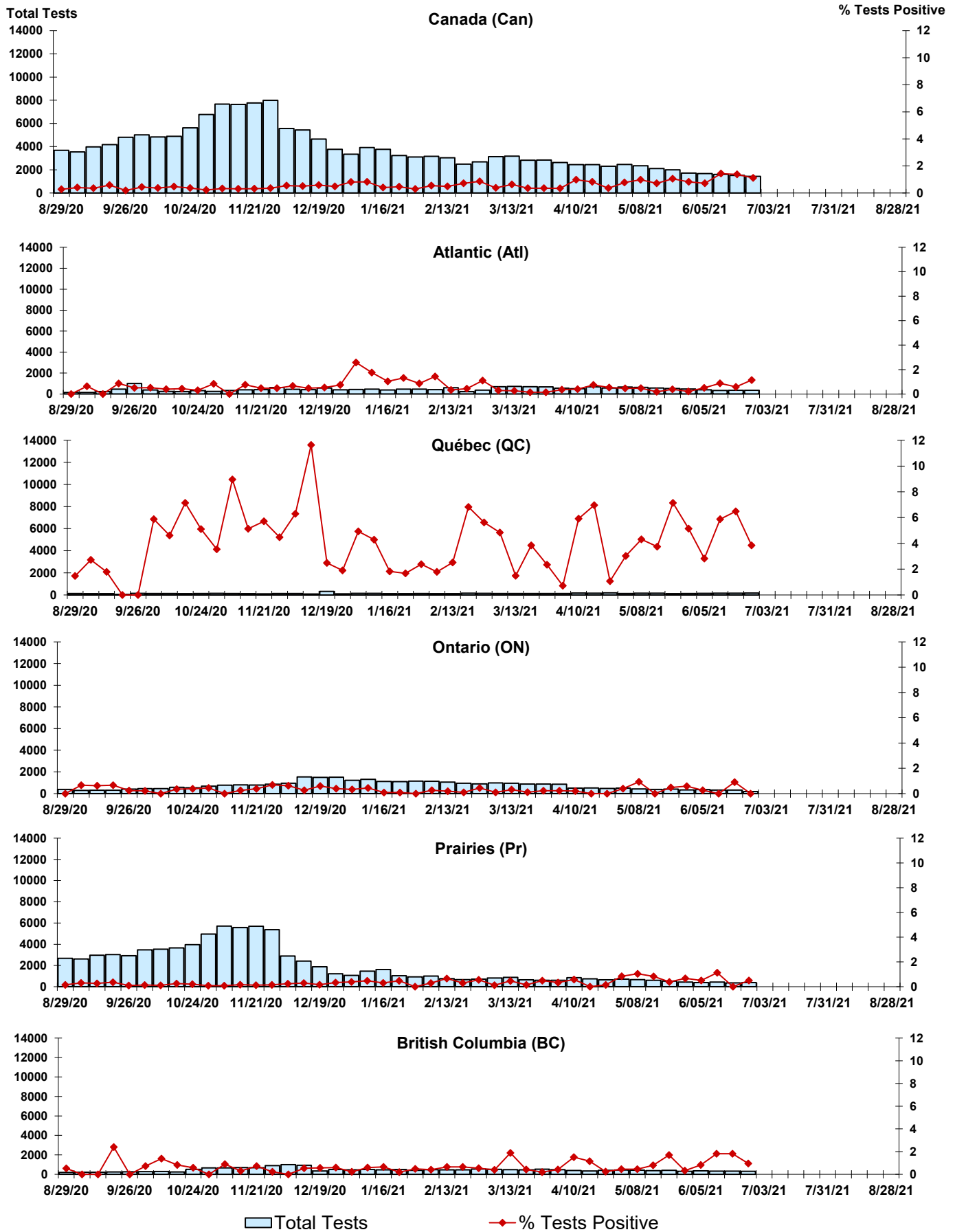
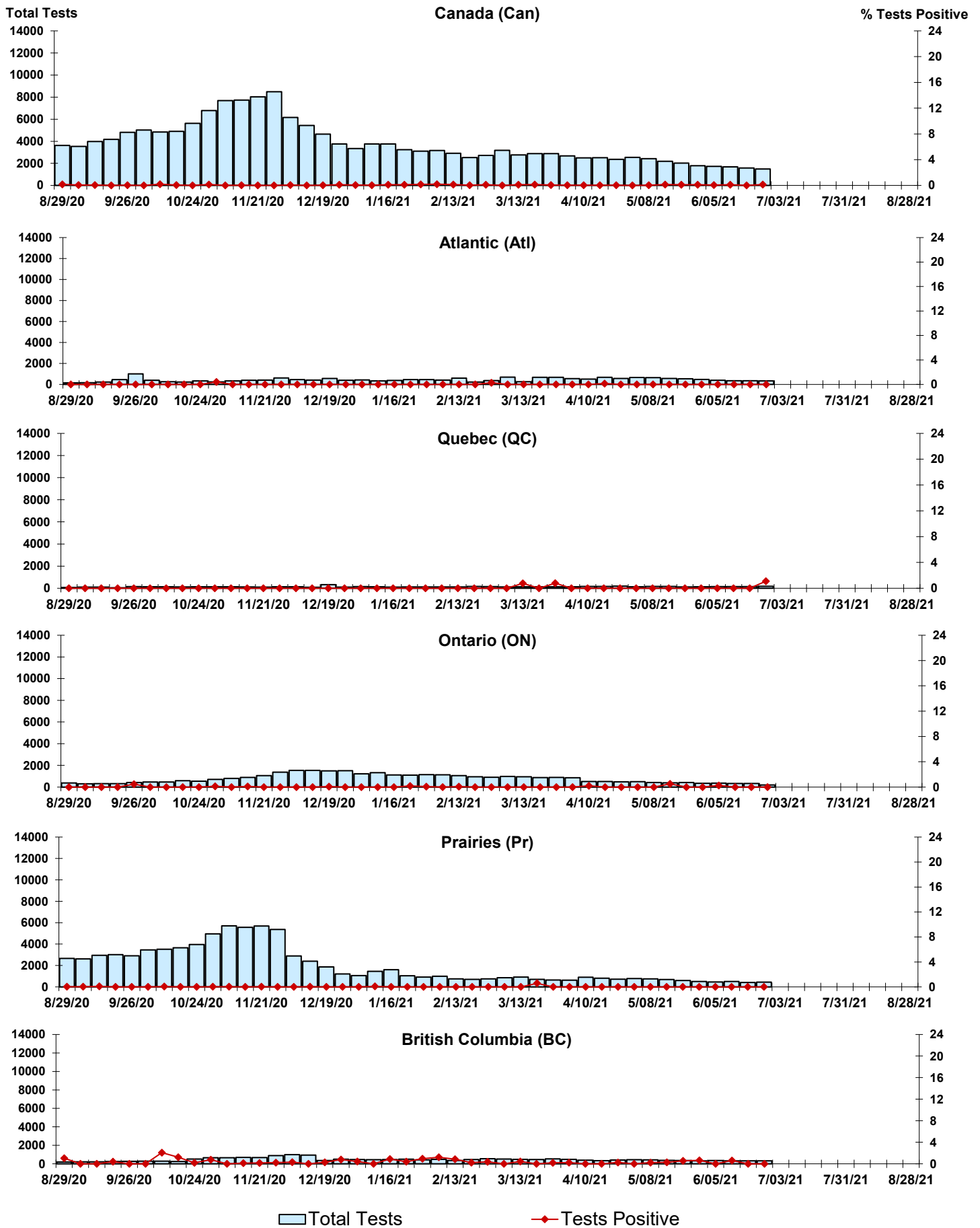


Figure 6: Positive human metapneumovirus (hMPV) Tests (%) in Canada by Region by Week of Report



Legend:  Total Tests      ◆ Tests Positive



Figure 7: Positive Enterovirus/Rhinovirus (entero/rhino) Tests (%) in Canada by Region by Week of Report

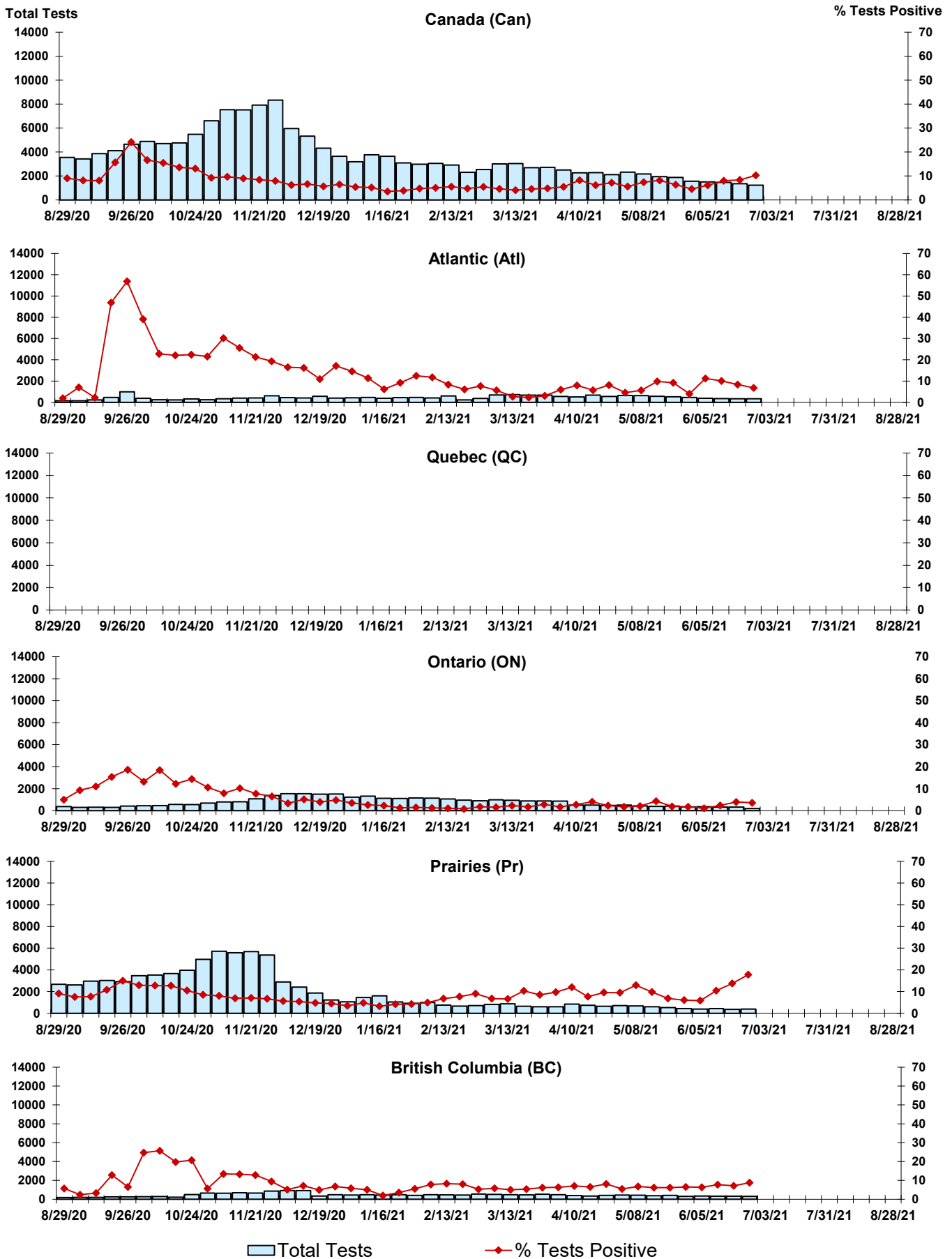
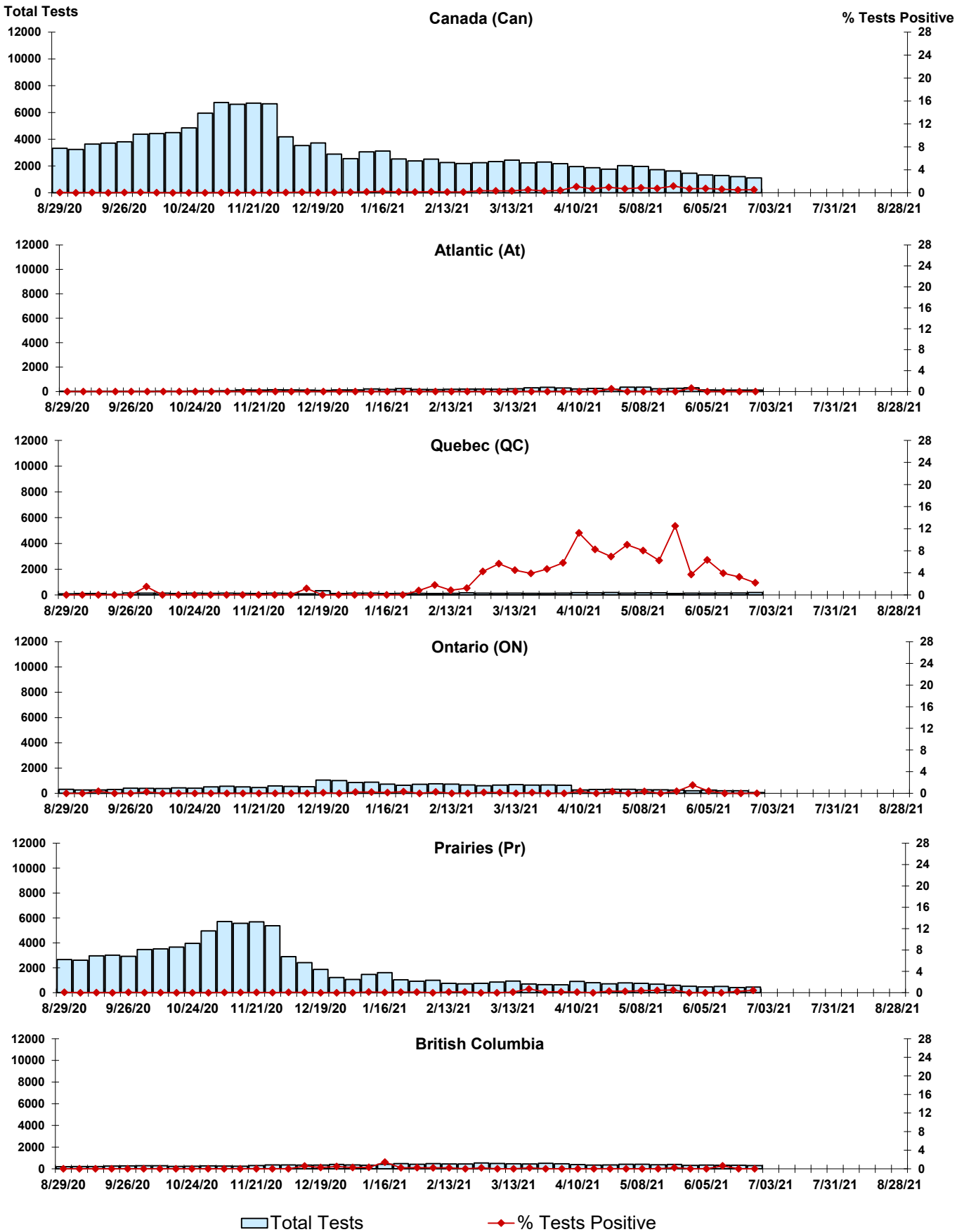


Figure 8: Positive Coronavirus (coron) Tests (%) in Canada by Region by Week of Report



## Abbreviations:

A(H1N1)pdm09: Influenza A(H1N1)pdm09

A(H3): Influenza A(H3N2)

A (UnS): Influenza A (Unsubtyped)

Adeno: Adenovirus

CHEO: Children's Hospital of Eastern Ontario

Coron: Coronavirus

Enterovirus: Enterovirus

hMPV: human metapneumovirus

HSC: Health Sciences Centre

N.A.: Not Applicable

P.H.L.: Public Health Laboratory

P.H.O.L.: Public Health Ontario Laboratory

PIV: Parainfluenza

Rhino: Rhinovirus

RSV: Respiratory syncytial virus

UHN: University Health Network

## Notes:

The data in the RVDSS report represent surveillance data available at the time of writing. Missing data are denoted by N.A.

Specimens from Yukon (YT), Northwest Territories (NT) and Nunavut (NU) are sent to reference laboratories in other provinces. Results reported for the Territories reflect the number of specimens that are identified as originating from YT, NT or NU.

Delays in the reporting of data may cause data to change retrospectively.

Due to reporting delays, the sum of weekly report totals do not add up to cumulative totals.