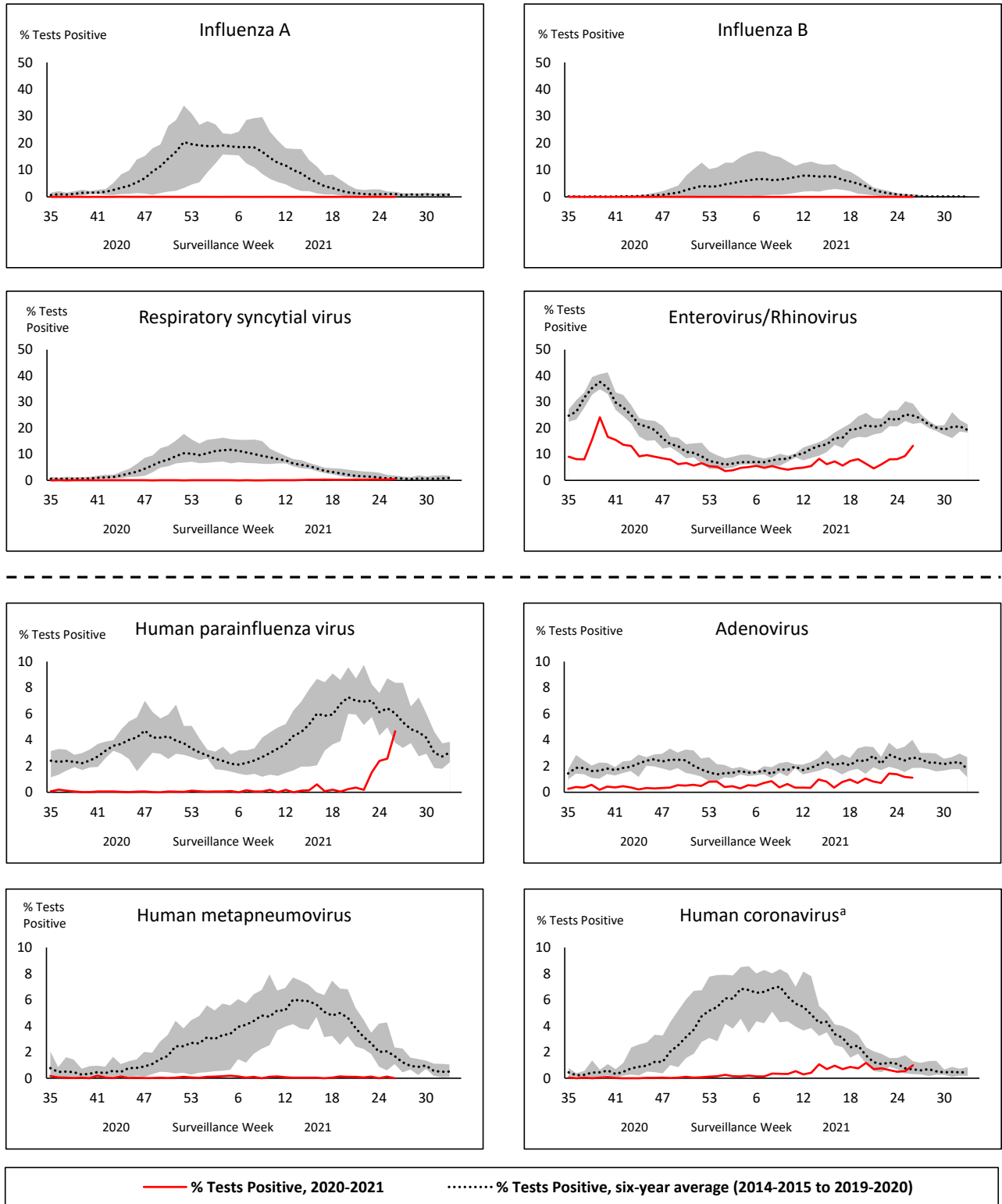


Respiratory Virus Report, Week 26 - ending July 3, 2021

The Respiratory Virus Detection Surveillance System collects data from select laboratories across Canada on the number of tests performed and the number of tests positive for influenza and other respiratory viruses. Data are reported on a weekly basis year-round to the Centre for Immunization and Respiratory Infectious Diseases (CIRID), Public Health Agency of Canada. These data are also summarized in the weekly FluWatch report.

In this Respiratory Virus Report, the number of detections of coronavirus reflects only seasonal human coronaviruses, not the novel pandemic coronavirus (SARS-CoV2) that causes COVID-19. For information on COVID-19, see the [Coronavirus disease \(COVID-19\): Outbreak update](#).

Figure 1: Positive respiratory virus tests (%) reported by participating laboratories in Canada by surveillance week compared to average and range from 2014-2015 to 2019-2020 season



Shaded area represents the maximum and minimum % of respiratory virus tests positive reported by week from seasons 2014-2015 to 2019-2020

Note: Data from week 11 of the 2019-2020 season onwards is excluded from the historical comparison due to the COVID-19 pandemic

Note: % Tests Positive scale changes across the dashed line

^a Human coronavirus excludes human coronaviruses SARS-CoV, MERS-CoV and SARS-CoV-2; Includes seasonal human coronaviruses HCoV-229E, HCoV-OC43, HCoV-NL63, HCoV-HKU1.

Table 1: Respiratory virus detections for the week ending July 3, 2021 (surveillance week 2021-26)

Reporting Laboratory	Flu Tested	A(H1)pdm09 Positive	A(H3) Positive	A(UnS) Positive	Total Flu A Positive	Total Flu B Positive	RSV Tested	RSV Positive	HPIV Tested	HPIV 1 Positive	HPIV 2 Positive	HPIV 3 Positive	HPIV 4 Positive	Other HPIV Positive	ADV Tested	ADV Positive	HMPV Tested	HMPV Positive	EV/RV Tested	EV/RV Positive	HCoV Tested	HCoV Positive
Newfoundland	206	0	0	0	0	0	206	0	206	0	0	0	0	0	191	1	206	0	75	5	N.C.	N.C.
Prince Edward Island	36	0	0	0	0	0	36	0	36	0	0	0	0	0	36	0	36	0	36	3	36	1
Nova Scotia	41	0	0	0	0	0	41	0	40	0	0	0	0	0	40	0	40	0	40	0	40	0
New Brunswick	50	0	0	0	0	0	43	0	22	0	0	0	0	0	22	0	22	0	22	0	22	0
Atlantic	333	0	0	0	0	0	326	0	304	0	0	0	0	0	289	1	304	0	173	8	98	1
Région Nord-Est	410	0	0	0	0	0	18	0	0	0	0	0	0	0	0	0	0	0	N.C.	N.C.	0	0
Québec-Chaudière-Appalaches	38	0	0	0	0	0	40	1	37	0	0	6	0	0	37	1	37	0	N.C.	N.C.	37	1
Centre-du-Québec	15	0	0	0	0	0	15	0	17	0	0	5	0	0	17	1	17	0	N.C.	N.C.	17	1
Montréal-Laval	453	0	0	0	0	0	453	16	139	20	0	25	0	0	139	4	139	0	N.C.	N.C.	139	3
Ouest du Québec	7	0	0	0	0	0	7	0	0	0	0	0	0	0	0	0	0	0	N.C.	N.C.	0	0
Montérégie	4	0	0	0	0	0	4	0	0	0	0	0	0	0	0	0	0	0	N.C.	N.C.	0	0
Province of Québec	927	0	0	0	0	0	537	17	193	20	0	36	0	0	193	6	193	0	N.C.	N.C.	193	5
P.H.O.L. - Ottawa	9	0	0	0	0	0	9	0	8	0	0	0	0	0	8	0	8	0	8	0	8	1
CHEO - Ottawa	71	0	0	0	0	0	71	0	20	0	0	0	0	0	20	0	20	0	20	4	20	2
P.H.O.L. - Kingston	5	0	0	0	0	0	5	0	2	0	0	0	0	0	2	0	2	0	2	0	2	0
UHN / Mount Sinai Hospital	347	0	0	0	0	0	347	0	28	0	0	0	0	0	28	0	28	0	28	0	28	0
P.H.O.L. - Toronto	85	0	0	0	0	0	85	0	65	0	0	0	0	0	65	0	65	0	65	3	65	0
Sick Kids Hospital - Toronto	N.R.	N.R.	N.R.	N.R.	N.R.	N.R.	N.R.	N.R.	N.R.	N.R.	N.R.	N.R.	N.R.	N.R.	N.R.	N.R.	N.R.	N.R.	N.R.	N.R.	N.R.	N.R.
Sunnybrook & Women's College HSC	N.R.	N.R.	N.R.	N.R.	N.R.	N.R.	N.R.	N.R.	N.R.	N.R.	N.R.	N.R.	N.R.	N.R.	N.R.	N.R.	N.R.	N.R.	N.R.	N.R.	N.R.	N.R.
P.H.O.L. - Sault Ste. Marie	1	0	0	0	0	0	1	0	1	0	0	0	0	0	1	0	1	0	1	0	1	0
P.H.O.L. - Timmins	4	0	0	0	0	0	4	0	2	0	0	0	0	0	2	0	2	0	2	0	2	0
St. Joseph's - London	N.R.	N.R.	N.R.	N.R.	N.R.	N.R.	N.R.	N.R.	N.R.	N.R.	N.R.	N.R.	N.R.	N.R.	N.R.	N.R.	N.R.	N.R.	N.R.	N.R.	N.R.	N.R.
P.H.O.L. - London	17	0	0	0	0	0	17	0	7	0	0	0	0	0	7	0	7	0	7	0	7	0
P.H.O.L. - Orillia	1	0	0	0	0	0	1	0	0	0	0	0	0	0	0	0	0	0	0	0	0	0
P.H.O.L. - Thunder Bay	2	0	0	0	0	0	2	0	2	0	0	0	0	0	2	0	2	0	2	0	2	0
P.H.O.L. - Sudbury	3	0	0	0	0	0	3	0	0	0	0	0	0	0	0	0	0	0	0	0	0	0
P.H.O.L. - Hamilton	3	0	0	0	0	0	3	0	3	0	0	0	0	0	3	0	3	0	3	0	3	0
P.H.O.L. - Peterborough	4	0	0	0	0	0	4	0	4	0	0	0	0	0	4	0	4	0	4	2	4	0
St. Joseph's - Hamilton	118	0	0	0	0	0	118	0	118	0	0	0	0	0	118	0	118	0	118	3	0	0
Province of Ontario	670	0	0	0	0	0	670	0	260	0	0	0	0	0	260	0	260	0	260	12	142	3
Province of Manitoba	1140	0	0	0	0	0	1140	1	20	0	0	1	0	0	20	0	101	0	20	5	101	0
Province of Saskatchewan	36	0	0	0	0	0	36	0	30	0	0	0	0	0	30	1	30	0	30	7	30	0
Province of Alberta	907	0	0	0	0	0	279	0	279	0	0	1	0	0	279	4	279	0	279	72	279	0
Prairies	2083	0	0	0	0	0	1455	1	329	0	0	2	0	0	329	5	410	0	329	84	410	0
British Columbia	521	0	0	0	0	0	521	0	177	0	0	0	0	1	177	2	177	0	173	20	166	1
Yukon	440	0	0	0	0	0	440	0	N.C.	N.C.	N.C.	N.C.	N.C.	N.C.	N.C.	N.C.	N.C.	N.C.	N.C.	N.C.	N.C.	N.C.
Northwest Territories	2	0	0	0	0	0	0	0	0	0	0	0	0	0	0	0	0	0	0	0	0	0
Nunavut	1	0	0	0	0	0	1	0	1	0	0	0	0	0	1	0	1	0	1	0	0	0
Territories	443	0	0	0	0	0	441	0	1	0	0	0	0	0	1	0	1	0	1	0	0	0
CANADA	4977	0	0	0	0	0	3950	18	1264	20	0	38	0	1	1249	14	1345	0	936	124	1009	10

The data in the RVDSS report represent surveillance data available at the time of writing. Data missing from the current week are denoted by N.R. Data not collected by reporting lab denoted by N.C.

Specimens from Yukon (YT), Northwest Territories (NT) and Nunavut (NU) are sent to reference laboratories in other provinces and reported results reflect specimens identified as originating from YT, NT or NU.

Results from British Columbia comprise of specimens from the following sites: BC Children's and Women's Hospital, Children's and Women's Hospital Laboratory, Fraser Health Medical Microbiology Laboratory, Island Health, Providence Health Care, Powell River Hospital, St. Paul's Hospital, Vancouver General Hospital, Victoria General Hospital, BCCDC Public Health Laboratory, Interior Health Authority sites and Northern Health Authority sites.

Delays in the reporting of data may cause data to change retrospectively.

Influenza co-detections may cause the sum of A(H1)pdm09, A(H3), and A(UnS) positive results to exceed the sum of Total Flu A Positive results.

Table 2: Cumulative respiratory virus detections from August 23, 2020 to July 3, 2021 (surveillance week 2020-35 to 2021-26)

Reporting Laboratory	Flu Tested	A(H1)pdm09 Positive	A(H3) Positive	A(UnS) Positive	Total Flu A Positive	Total Flu B Positive	RSV Tested	RSV Positive	HPIV Tested	HPIV 1 Positive	HPIV 2 Positive	HPIV 3 Positive	HPIV 4 Positive	Other HPIV Positive	ADV Tested	ADV Positive	HMPV Tested	HMPV Positive	EV/RV Tested	EV/RV Positive	HCoV Tested	HCoV Positive
Newfoundland	13471	0	0	0	0	0	13470	10	13470	1	0	3	0	0	13483	55	12883	2	13177	2203	N.C.	N.C.
Prince Edward Island	4105	0	0	0	0	0	4105	4	4101	3	0	0	1	0	4101	40	4101	0	4101	471	4101	2
Nova Scotia	8549	0	0	0	0	0	8552	0	1406	0	10	0	1	0	1406	16	1406	1	1406	87	1433	0
New Brunswick	54544	0	0	0	0	1	20460	0	1581	0	0	0	0	0	1572	11	1572	0	1572	62	1527	2
Atlantic	80669	0	0	0	0	1	46587	14	20558	4	10	3	2	0	20562	122	19962	3	20256	2823	7061	4
Région Nord-Est	9034	0	0	0	0	0	1189	1	7	0	0	0	0	0	7	1	7	0	N.C.	N.C.	7	0
Québec-Chaudière-Appalaches	829	0	0	1	1	0	950	3	772	0	0	16	0	0	774	42	769	0	N.C.	N.C.	752	31
Centre-du-Québec	953	0	0	0	0	0	961	2	430	0	0	10	0	0	428	23	430	0	N.C.	N.C.	427	17
Montréal-Laval	11567	0	0	0	0	0	10612	227	4948	63	0	84	0	0	5002	185	4932	4	N.C.	N.C.	4932	127
Ouest du Québec	2543	0	0	0	0	0	2486	0	0	0	0	0	0	0	0	0	0	0	N.C.	N.C.	0	0
Montérégie	1246	0	0	0	0	0	1246	1	0	0	0	0	0	0	0	0	0	0	N.C.	N.C.	0	0
Province of Québec	26172	0	0	1	1	0	17444	234	6157	63	0	110	0	0	6211	251	6138	4	N.C.	N.C.	6118	175
P.H.O.L. - Ottawa	633	0	0	0	0	0	633	1	530	0	0	0	0	0	530	0	529	0	530	24	529	2
CHEO - Ottawa	5327	0	0	1	1	1	4924	5	1102	0	0	0	0	0	977	15	977	1	977	106	977	5
P.H.O.L. - Kingston	906	0	0	1	1	0	906	0	583	0	0	0	0	0	583	4	577	0	583	108	577	0
UHN / Mount Sinai Hospital	15860	2	0	2	4	1	15791	7	10649	3	2	3	8	0	9023	10	10609	10	10406	105	8445	6
P.H.O.L. - Toronto	6951	0	0	0	0	0	6948	3	5972	0	0	0	0	3	5973	19	5970	2	5972	167	5970	5
Sick Kids Hospital - Toronto	1237	0	0	0	0	0	0	0	1237	0	0	0	0	0	1237	18	1237	0	1237	119	1237	1
Sunnybrook & Women's College HSC	0	0	0	0	0	0	0	0	0	0	0	0	0	0	0	0	0	0	0	0	0	0
P.H.O.L. - Sault Ste. Marie	177	0	0	2	2	0	175	0	101	0	0	0	0	0	101	0	101	0	101	6	101	0
P.H.O.L. - Timmins	633	0	0	0	0	0	633	0	173	0	0	0	0	0	173	0	172	0	173	31	172	0
St. Joseph's - London	218	0	0	0	0	0	218	0	55	0	0	0	0	0	55	0	55	0	91	8	36	0
P.H.O.L. - London	1982	1	0	5	6	2	1972	0	1331	0	0	0	0	2	1331	2	1325	0	1331	127	1325	3
P.H.O.L. - Orillia	408	0	0	1	1	0	406	0	201	0	0	0	0	0	201	1	201	0	201	12	201	0
P.H.O.L. - Thunder Bay	421	0	0	0	0	0	421	0	402	0	0	0	0	0	403	3	402	0	402	138	402	0
P.H.O.L. - Sudbury	517	0	0	0	0	0	515	0	344	0	0	0	0	4	344	3	344	0	344	30	344	5
P.H.O.L. - Hamilton	1550	0	0	0	0	0	1495	1	1244	0	0	0	0	0	1244	2	1244	0	1244	101	1244	0
P.H.O.L. - Peterborough	555	0	0	1	1	0	509	0	400	0	0	0	0	0	400	0	399	0	400	26	399	0
St. Joseph's - Hamilton	10323	0	0	0	0	0	10323	3	10323	0	0	2	0	0	10323	23	10323	0	10323	466	0	0
Province of Ontario	47698	3	0	13	16	4	45869	20	34647	3	2	5	8	9	32898	100	34465	13	34315	1574	21959	27
Manitoba	63366	0	1	3	4	2	63356	69	2846	0	1	2	0	0	2846	20	3892	1	2846	174	3892	6
Province of Saskatchewan	171994	0	0	1	1	0	27127	4	2076	0	0	1	1	0	2076	18	2076	4	2076	214	2076	13
Province of Alberta	132594	7	0	6	13	0	79535	0	79535	2	20	5	9	0	79535	165	79535	11	79535	6801	79535	31
Prairies	367954	7	1	10	18	2	170018	73	84457	2	21	8	10	0	84457	203	85503	16	84457	7189	85503	50
British Columbia	90636	3	8	1	10	8	90137	6	19714	1	4	1	13	6	20260	126	20057	67	19850	1614	15703	23
Yukon	7032	0	0	8	8	7	6941	4	N.C.	N.C.	N.C.	N.C.	N.C.	N.C.	1151	12	1151	1	1151	326	1151	1
Northwest Territories	1206	0	0	0	0	0	1151	0	1151	0	0	0	1	0	1151	12	1151	1	1151	282	191	0
Nunavut	1126	0	0	0	0	0	1103	0	1103	3	1	0	0	0	1103	25	1103	5	1103	282	191	0
Territories	9364	0	0	8	8	7	9195	4	2254	3	1	0	1	0	2254	37	2254	6	2254	608	1342	1
CANADA	622493	13	9	33	53	22	379250	351	167787	76	38	127	34	15	166642	839	168379	109	161132	13808	137686	280

The data in the RVDSS report represent surveillance data available at the time of writing. Data not collected by reporting lab denoted by N.C.

Specimens from Yukon (YT), Northwest Territories (NT) and Nunavut (NU) are sent to reference laboratories in other provinces and reported results reflect specimens identified as originating from YT, NT or NU.

Results from British Columbia comprise of specimens from the following sites: BC Children's and Women's Hospital, Children's and Women's Hospital Laboratory, Fraser Health Medical Microbiology Laboratory, Island Health, Providence Health Care, Powell River Hospital , St. Paul's Hospital , Vancouver General Hospital, Victoria General Hospital, BCCDC Public Health Laboratory, Interior Health Authority sites and Northern Health Authority sites.

Delays in the reporting of data may cause data to change retrospectively. Due to these delays, the sum of weekly report totals do not add up to cumulative totals.

Influenza co-detections may cause the sum of A(H1N1)pdm09, A(H3), and A(UnS) positive results to exceed the sum of Total Flu A Positive results.

Figure 2: Number of positive respiratory virus tests reported by participating laboratories in Canada by surveillance week

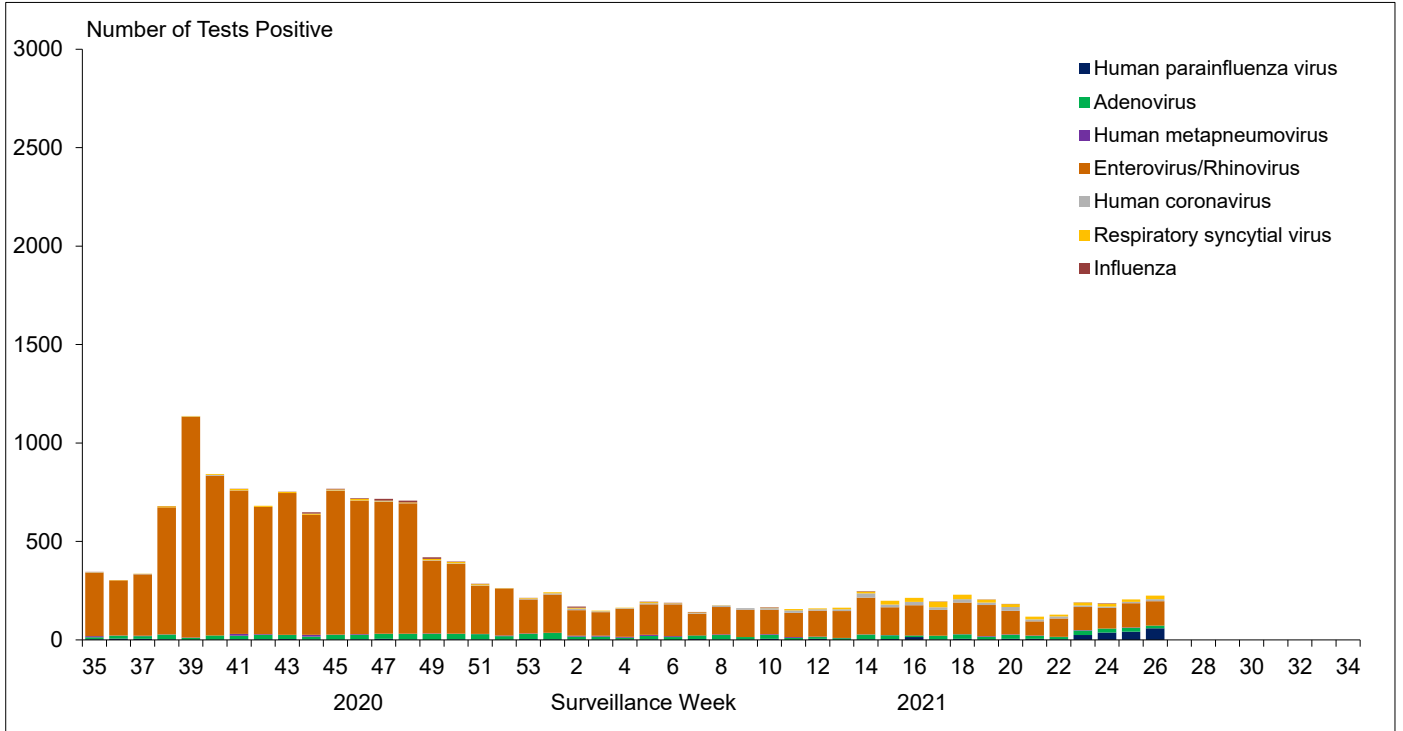


Figure 3: Positive Influenza (Flu) tests (%) in Canada by region by surveillance week

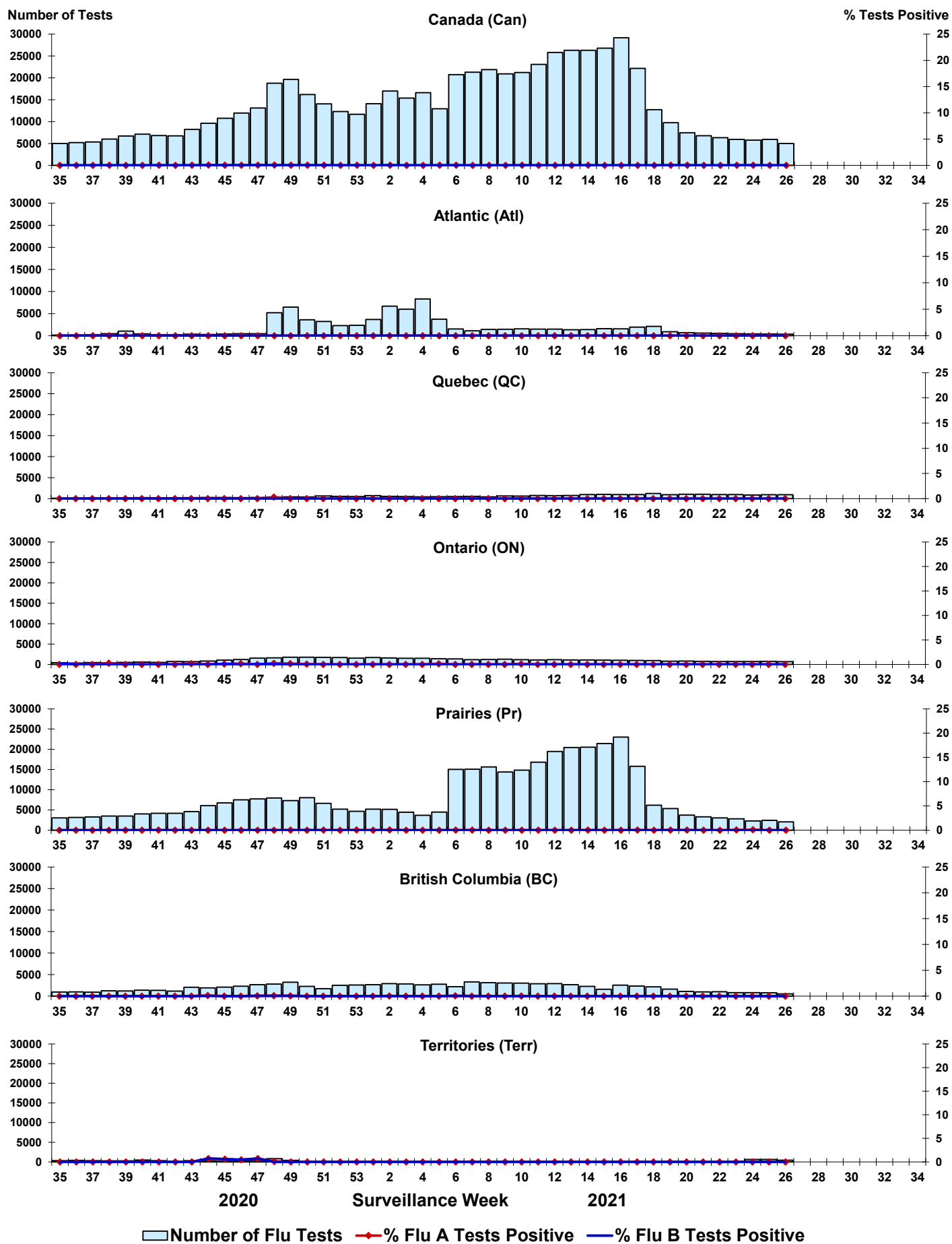


Figure 4: Positive Respiratory syncytial virus (RSV) tests (%) in Canada by region by surveillance week

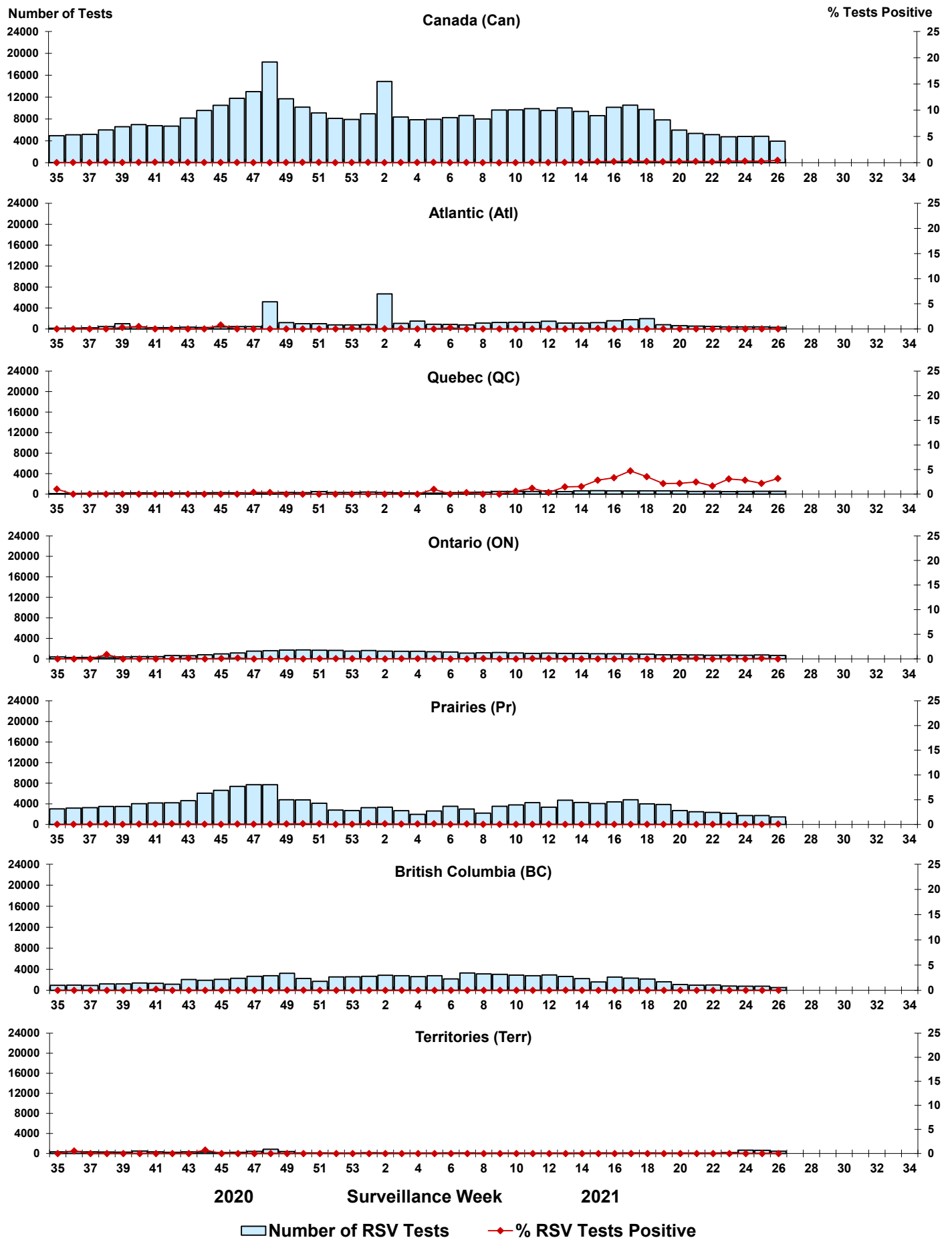


Figure 5: Positive Human parainfluenza virus (HPIV) tests (%) in Canada by region by surveillance week

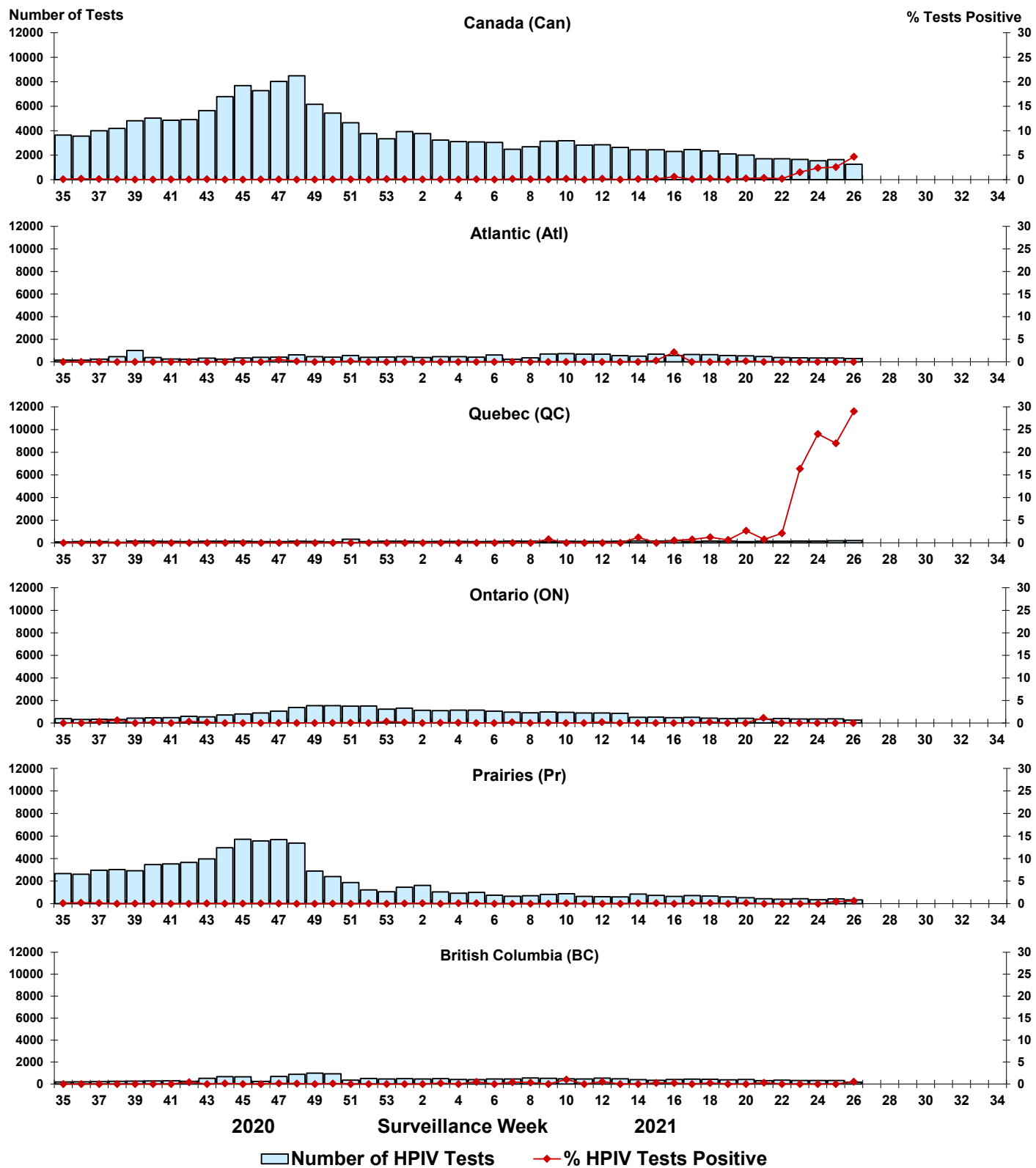


Figure 6: Positive Adenovirus (ADV) tests (%) in Canada by region by surveillance week

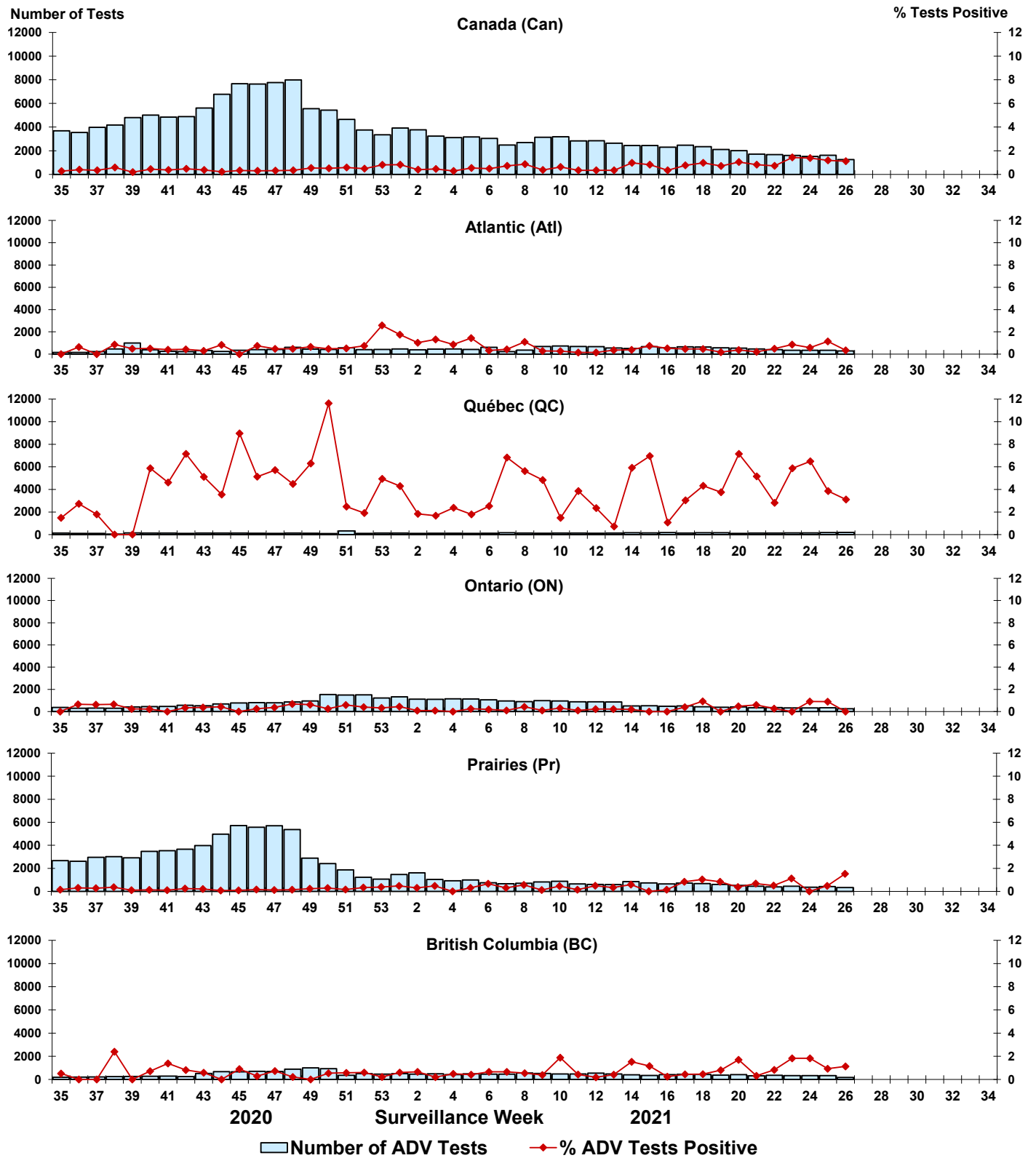


Figure 7: Positive Human metapneumovirus (HMPV) tests (%) in Canada by region by surveillance week

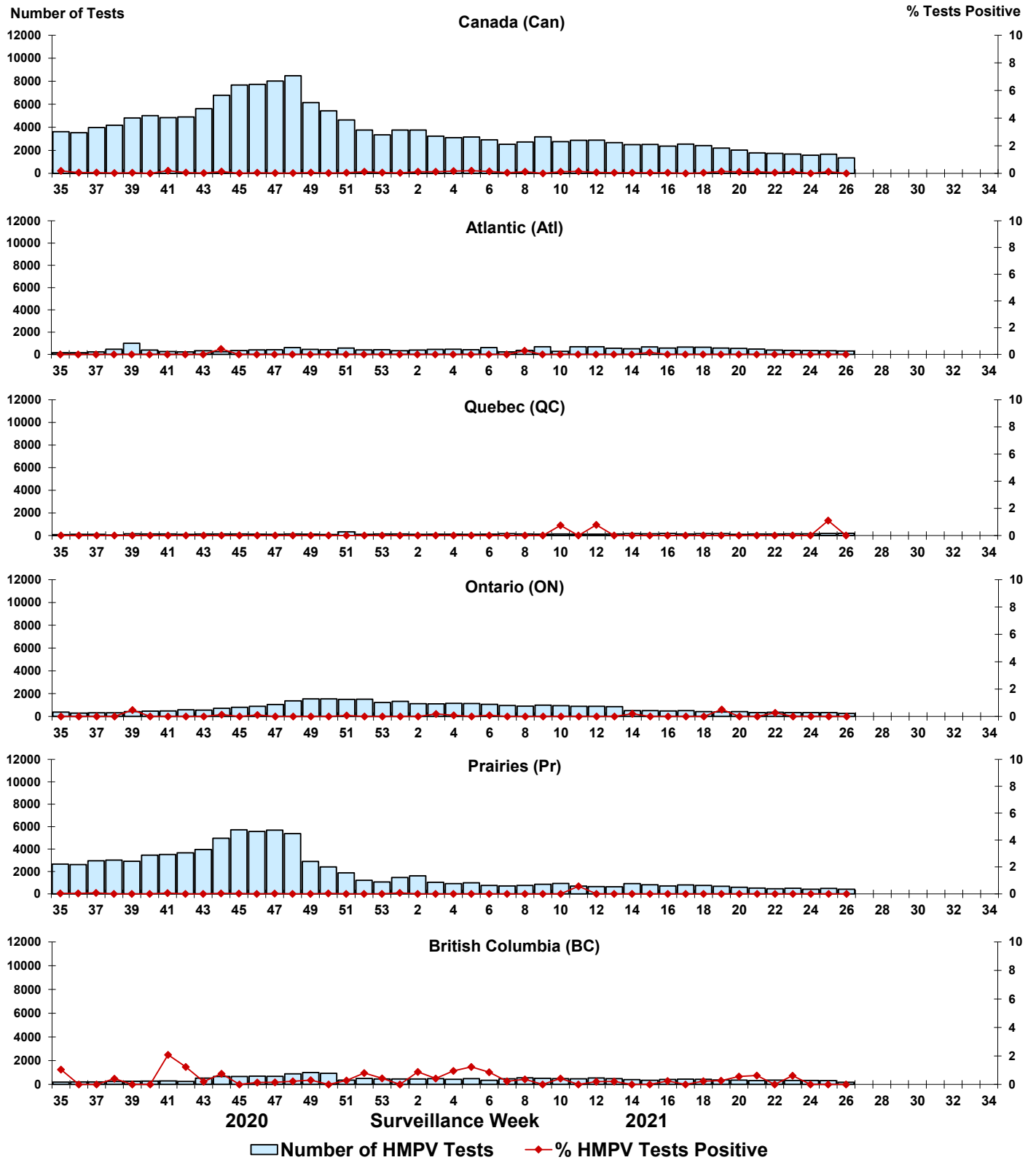


Figure 8: Positive Enterovirus/Rhinovirus (EV/RV) tests (%) in Canada by region by surveillance week

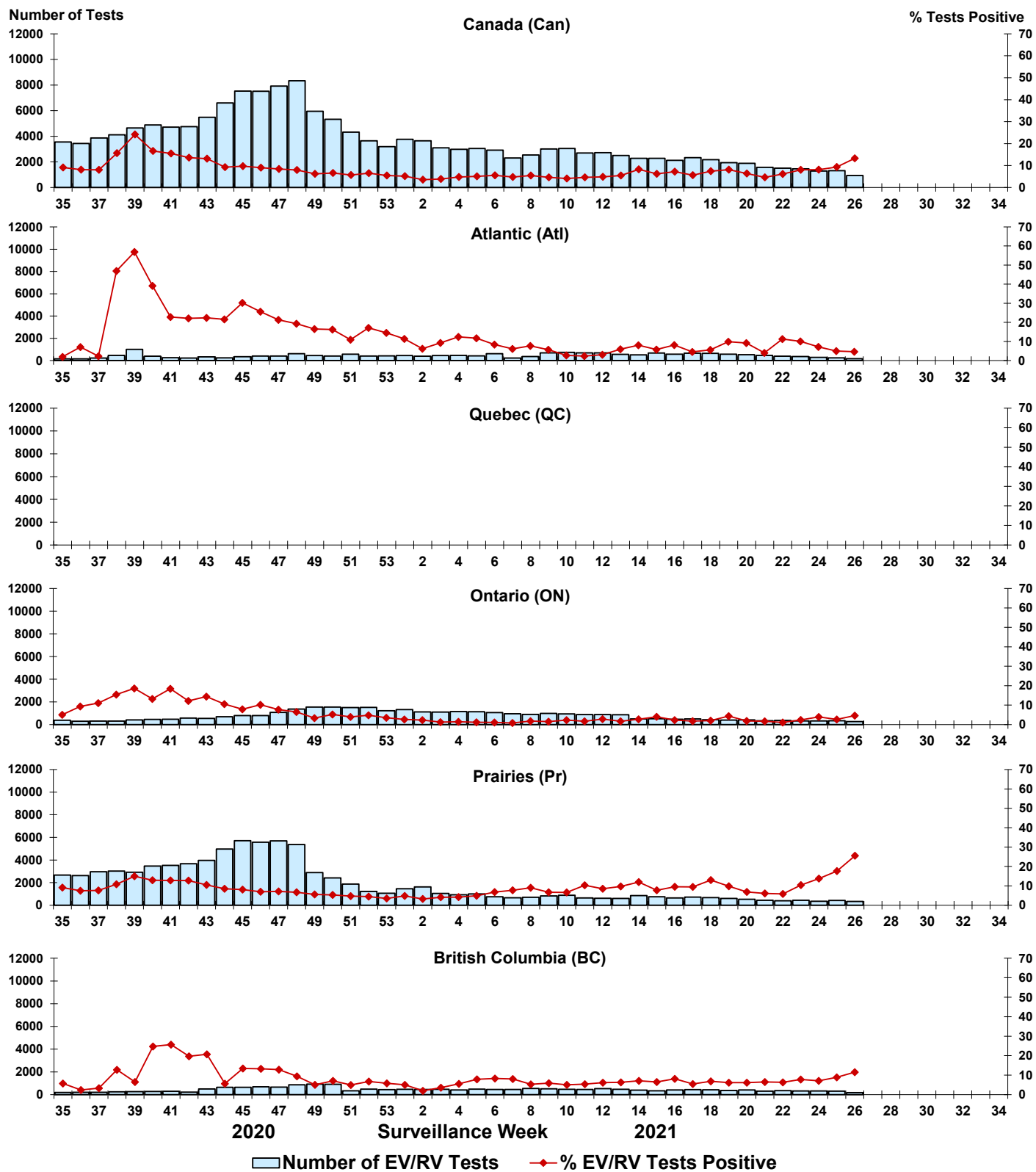
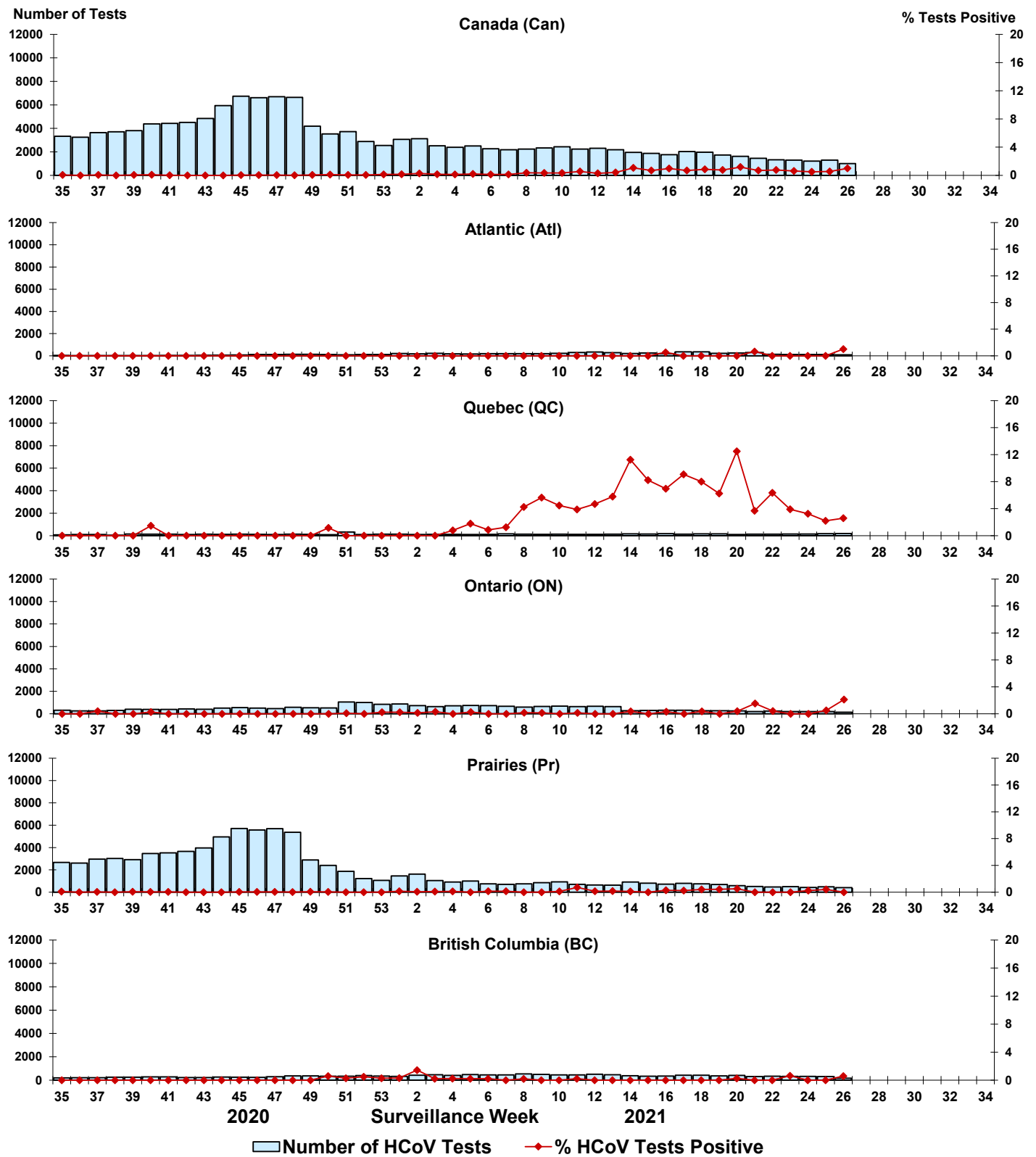


Figure 9: Positive Human coronavirus (HCoV) tests (%) in Canada by region by surveillance week



Abbreviations:

Flu: Influenza

A(H1)pdm09: Influenza A(H1N1)pdm09

A(H3): Influenza A(H3N2)

A(UnS): Influenza A(Unsubtyped)

RSV: Respiratory syncytial virus

HPIV: Human parainfluenza virus

HMPV: Human metapneumovirus

ADV: Adenovirus

EV/RV: Enterovirus/Rhinovirus

HCoV: Human coronavirus

Atl: Atlantic Canada

BC: British Columbia

Can: Canada

CHEO: Children's Hospital of Eastern Ontario

HSC: Health Sciences Centre

N.C.: Data not collected

N.R.: Data not reported for current week

ON: Ontario

PR: Prairies

P.H.O.L.: Public Health Ontario Laboratory

QC: Quebec

Terr: Territories of Canada

UHN: University Health Network