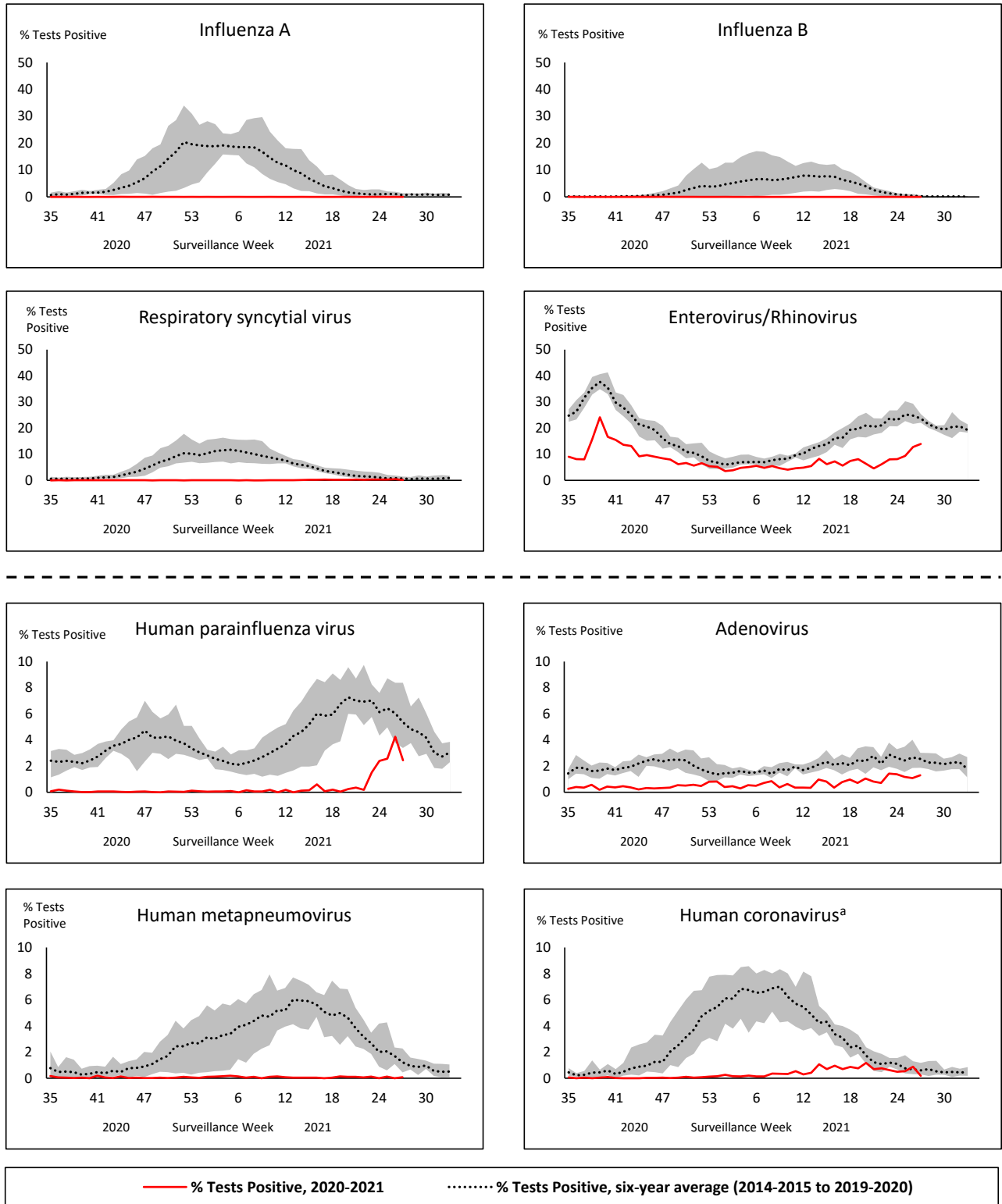


## Respiratory Virus Report, Week 27 - ending July 10, 2021

The Respiratory Virus Detection Surveillance System collects data from select laboratories across Canada on the number of tests performed and the number of tests positive for influenza and other respiratory viruses. Data are reported on a weekly basis year-round to the Centre for Immunization and Respiratory Infectious Diseases (CIRID), Public Health Agency of Canada. These data are also summarized in the weekly FluWatch report.

**In this Respiratory Virus Report, the number of detections of coronavirus reflects only seasonal human coronaviruses, not the novel pandemic coronavirus (SARS-CoV-2) that causes COVID-19. For information on COVID-19, see the [Coronavirus disease \(COVID-19\): Outbreak update](#).**

**Figure 1: Positive respiratory virus tests (%) reported by participating laboratories in Canada by surveillance week compared to average and range from 2014-2015 to 2019-2020 season**



Shaded area represents the maximum and minimum % of respiratory virus tests positive reported by week from seasons 2014-2015 to 2019-2020

Note: Data from week 11 of the 2019-2020 season onwards is excluded from the historical comparison due to the COVID-19 pandemic

Note: % Tests Positive scale changes across the dashed line

<sup>a</sup> Human coronavirus excludes human coronaviruses SARS-CoV, MERS-CoV and SARS-CoV-2; Includes seasonal human coronaviruses HCoV-229E, HCoV-OC43, HCoV-NL63, HCoV-HKU1.

**Table 1: Respiratory virus detections for the week ending July 10, 2021 (surveillance week 2021-27)**

Reporting Laboratory	Flu Tested	A(H1)pdm09 Positive	A(H3) Positive	A(UnS) Positive	Total Flu A Positive	Total Flu B Positive	RSV Tested	RSV Positive	HPIV Tested	HPIV 1 Positive	HPIV 2 Positive	HPIV 3 Positive	HPIV 4 Positive	Other HPIV Positive	ADV Tested	ADV Positive	HMPV Tested	HMPV Positive	EV/RV Tested	EV/RV Positive	HCoV Tested	HCoV Positive
Newfoundland	193	0	0	0	0	0	193	0	193	0	0	0	0	0	193	1	193	0	85	3	N.C.	N.C.
Prince Edward Island	44	0	0	0	0	0	44	0	44	0	0	0	0	0	44	2	44	0	44	5	44	0
Nova Scotia	33	0	0	0	0	0	33	0	30	0	0	0	0	0	30	0	30	0	30	0	31	0
New Brunswick	30	0	0	0	0	0	26	0	9	0	0	0	0	0	9	0	9	0	9	0	9	0
<b>Atlantic</b>	<b>300</b>	<b>0</b>	<b>0</b>	<b>0</b>	<b>0</b>	<b>0</b>	<b>296</b>	<b>0</b>	<b>276</b>	<b>0</b>	<b>0</b>	<b>0</b>	<b>0</b>	<b>0</b>	<b>276</b>	<b>3</b>	<b>276</b>	<b>0</b>	<b>168</b>	<b>8</b>	<b>84</b>	<b>0</b>
Région Nord-Est	392	0	0	0	0	0	25	0	1	0	0	0	0	0	1	0	1	0	N.C.	N.C.	1	0
Québec-Chaudière-Appalaches	57	0	0	0	0	0	59	0	57	0	0	19	1	0	57	7	57	0	N.C.	N.C.	57	0
Centre-du-Québec	0	0	0	0	0	0	0	0	16	0	0	1	0	0	16	0	16	0	N.C.	N.C.	16	0
Montréal-Laval	72	0	0	0	0	0	71	3	50	0	0	7	0	0	50	0	50	0	N.C.	N.C.	50	0
Ouest du Québec	8	0	0	0	0	0	8	0	0	0	0	0	0	0	0	0	0	0	N.C.	N.C.	0	0
Montérégie	6	0	0	0	0	0	6	1	0	0	0	0	0	0	0	0	0	0	N.C.	N.C.	0	0
<b>Province of Québec</b>	<b>535</b>	<b>0</b>	<b>0</b>	<b>0</b>	<b>0</b>	<b>0</b>	<b>169</b>	<b>4</b>	<b>124</b>	<b>0</b>	<b>0</b>	<b>27</b>	<b>1</b>	<b>0</b>	<b>124</b>	<b>7</b>	<b>124</b>	<b>0</b>	<b>N.C.</b>	<b>N.C.</b>	<b>124</b>	<b>0</b>
P.H.O.L. - Ottawa	13	0	0	0	0	0	13	0	9	0	0	0	0	0	9	0	9	0	9	0	9	0
CHEO - Ottawa	52	0	0	0	0	0	52	0	16	0	0	0	0	0	16	0	16	0	16	5	16	0
P.H.O.L. - Kingston	4	0	0	0	0	0	4	0	4	0	0	0	0	0	4	0	3	0	4	0	3	0
UHN / Mount Sinai Hospital	362	0	0	0	0	0	362	0	38	0	0	2	0	0	38	0	38	0	38	0	38	0
P.H.O.L. - Toronto	88	0	0	0	0	0	88	0	66	0	0	0	0	0	66	0	66	0	66	3	66	1
Sick Kids Hospital - Toronto	N.R.	N.R.	N.R.	N.R.	N.R.	N.R.	N.R.	N.R.	N.R.	N.R.	N.R.	N.R.	N.R.	N.R.	N.R.	N.R.	N.R.	N.R.	N.R.	N.R.	N.R.	N.R.
Sunnybrook & Women's College HSC	N.R.	N.R.	N.R.	N.R.	N.R.	N.R.	N.R.	N.R.	N.R.	N.R.	N.R.	N.R.	N.R.	N.R.	N.R.	N.R.	N.R.	N.R.	N.R.	N.R.	N.R.	N.R.
P.H.O.L. - Sault Ste. Marie	2	0	0	0	0	0	2	0	2	0	0	0	0	0	2	0	2	0	2	0	2	0
P.H.O.L. - Timmins	0	0	0	0	0	0	0	0	0	0	0	0	0	0	0	0	0	0	0	0	0	0
St. Joseph's - London	N.R.	N.R.	N.R.	N.R.	N.R.	N.R.	N.R.	N.R.	N.R.	N.R.	N.R.	N.R.	N.R.	N.R.	N.R.	N.R.	N.R.	N.R.	N.R.	N.R.	N.R.	N.R.
P.H.O.L. - London	16	0	0	0	0	0	16	0	6	0	0	0	0	0	6	0	6	0	6	0	6	0
P.H.O.L. - Orillia	4	0	0	0	0	0	4	0	3	0	0	0	0	0	3	1	3	0	3	0	3	0
P.H.O.L. - Thunder Bay	2	0	0	0	0	0	2	0	1	0	0	0	0	0	1	0	1	0	1	0	1	0
P.H.O.L. - Sudbury	5	0	0	0	0	0	5	0	2	0	0	0	0	0	2	0	2	0	2	0	2	0
P.H.O.L. - Hamilton	11	0	0	0	0	0	11	0	8	0	0	0	0	0	8	0	8	0	8	2	8	0
P.H.O.L. - Peterborough	6	0	0	0	0	0	6	0	2	0	0	0	0	0	2	0	2	0	2	0	2	0
St. Joseph's - Hamilton	160	0	0	0	0	0	160	0	160	0	0	0	0	0	160	0	160	0	160	11	0	0
<b>Province of Ontario</b>	<b>725</b>	<b>0</b>	<b>0</b>	<b>0</b>	<b>0</b>	<b>0</b>	<b>725</b>	<b>0</b>	<b>317</b>	<b>0</b>	<b>0</b>	<b>2</b>	<b>0</b>	<b>0</b>	<b>317</b>	<b>1</b>	<b>316</b>	<b>0</b>	<b>317</b>	<b>21</b>	<b>156</b>	<b>1</b>
Province of Manitoba	1201	0	0	0	0	0	1201	0	24	0	0	0	0	0	24	0	93	0	24	2	93	0
Province of Saskatchewan	35	0	0	0	0	0	35	0	29	0	0	0	0	0	29	0	29	0	29	2	29	0
Province of Alberta	1041	0	0	0	0	0	353	0	353	0	0	2	0	0	353	2	353	0	353	92	353	0
<b>Prairies</b>	<b>2277</b>	<b>0</b>	<b>0</b>	<b>0</b>	<b>0</b>	<b>0</b>	<b>1589</b>	<b>0</b>	<b>406</b>	<b>0</b>	<b>0</b>	<b>2</b>	<b>0</b>	<b>0</b>	<b>406</b>	<b>2</b>	<b>475</b>	<b>0</b>	<b>406</b>	<b>96</b>	<b>475</b>	<b>0</b>
<b>British Columbia</b>	<b>638</b>	<b>0</b>	<b>0</b>	<b>0</b>	<b>0</b>	<b>0</b>	<b>638</b>	<b>0</b>	<b>256</b>	<b>1</b>	<b>0</b>	<b>0</b>	<b>1</b>	<b>0</b>	<b>256</b>	<b>5</b>	<b>256</b>	<b>1</b>	<b>252</b>	<b>35</b>	<b>248</b>	<b>1</b>
Yukon	299	0	0	0	0	0	299	0	N.C.	N.C.	N.C.	N.C.	N.C.	N.C.	N.C.	N.C.	N.C.	N.C.	N.C.	N.C.	N.C.	N.C.
Northwest Territories	8	0	0	0	0	0	6	0	6	0	0	0	0	0	6	0	6	0	6	0	6	0
Nunavut	0	0	0	0	0	0	0	0	0	0	0	0	0	0	0	0	0	0	0	0	0	0
<b>Territories</b>	<b>307</b>	<b>0</b>	<b>0</b>	<b>0</b>	<b>0</b>	<b>0</b>	<b>305</b>	<b>0</b>	<b>6</b>	<b>0</b>	<b>0</b>	<b>0</b>	<b>0</b>	<b>0</b>	<b>6</b>	<b>0</b>	<b>6</b>	<b>0</b>	<b>6</b>	<b>0</b>	<b>6</b>	<b>0</b>
<b>CANADA</b>	<b>4782</b>	<b>0</b>	<b>0</b>	<b>0</b>	<b>0</b>	<b>0</b>	<b>3722</b>	<b>4</b>	<b>1385</b>	<b>1</b>	<b>0</b>	<b>31</b>	<b>2</b>	<b>0</b>	<b>1385</b>	<b>18</b>	<b>1453</b>	<b>1</b>	<b>1149</b>	<b>160</b>	<b>1093</b>	<b>2</b>

The data in the RVDSS report represent surveillance data available at the time of writing. Data missing from the current week are denoted by N.R. Data not collected by reporting lab denoted by N.C.

Specimens from Yukon (YT), Northwest Territories (NT) and Nunavut (NU) are sent to reference laboratories in other provinces and reported results reflect specimens identified as originating from YT, NT or NU.

Results from British Columbia comprise of specimens from the following sites: BC Children's and Women's Hospital, Children's and Women's Hospital Laboratory, Fraser Health Medical Microbiology Laboratory, Island Health, Providence Health Care, Powell River Hospital, St. Paul's Hospital, Vancouver General Hospital, Victoria General Hospital, BCCDC Public Health Laboratory, Interior Health Authority sites and Northern Health Authority sites.

Delays in the reporting of data may cause data to change retrospectively.

Influenza co-detections may cause the sum of A(H1)pdm09, A(H3), and A(UnS) positive results to exceed the sum of Total Flu A Positive results.

**Table 2: Cumulative respiratory virus detections from August 23, 2020 to July 10, 2021 (surveillance week 2020-35 to 2021-27)**

Reporting Laboratory	Flu Tested	A(H1)pdm09 Positive	A(H3) Positive	A(UnS) Positive	Total Flu A Positive	Total Flu B Positive	RSV Tested	RSV Positive	HPIV Tested	HPIV 1 Positive	HPIV 2 Positive	HPIV 3 Positive	HPIV 4 Positive	Other HPIV Positive	ADV Tested	ADV Positive	HMPV Tested	HMPV Positive	EV/RV Tested	EV/RV Positive	HCoV Tested	HCoV Positive
Newfoundland	13664	0	0	0	0	0	13663	10	13663	1	0	3	0	0	13676	56	13076	2	13262	2206	N.C.	N.C.
Prince Edward Island	4149	0	0	0	0	0	4149	4	4145	3	0	0	1	0	4145	42	4145	0	4145	476	4145	2
Nova Scotia	8582	0	0	0	0	0	8585	0	1436	0	10	0	1	0	1436	16	1436	1	1436	87	1464	0
New Brunswick	54574	0	0	0	0	1	20486	0	1590	0	0	0	0	0	1581	11	1581	0	1581	62	1536	2
<b>Atlantic</b>	<b>80969</b>	<b>0</b>	<b>0</b>	<b>0</b>	<b>0</b>	<b>1</b>	<b>46883</b>	<b>14</b>	<b>20834</b>	<b>4</b>	<b>10</b>	<b>3</b>	<b>2</b>	<b>0</b>	<b>20838</b>	<b>125</b>	<b>20238</b>	<b>3</b>	<b>20424</b>	<b>2831</b>	<b>7145</b>	<b>4</b>
Région Nord-Est	9426	0	0	0	0	0	1214	1	8	0	0	0	0	0	8	1	8	0	N.C.	N.C.	8	0
Québec-Chaudière-Appalaches	886	0	0	1	1	0	1009	3	829	0	0	35	1	0	831	49	826	0	N.C.	N.C.	809	31
Centre-du-Québec	953	0	0	0	0	0	961	2	446	0	0	11	0	0	444	23	446	0	N.C.	N.C.	443	17
Montréal-Laval	11639	0	0	0	0	0	10683	230	4998	63	0	91	0	0	5052	185	4982	4	N.C.	N.C.	4982	127
Ouest du Québec	2551	0	0	0	0	0	2494	0	0	0	0	0	0	0	0	0	0	0	N.C.	N.C.	0	0
Montérégie	1252	0	0	0	0	0	1252	2	0	0	0	0	0	0	0	0	0	0	N.C.	N.C.	0	0
<b>Province of Québec</b>	<b>26707</b>	<b>0</b>	<b>0</b>	<b>1</b>	<b>1</b>	<b>0</b>	<b>17613</b>	<b>238</b>	<b>6281</b>	<b>63</b>	<b>0</b>	<b>137</b>	<b>1</b>	<b>0</b>	<b>6335</b>	<b>258</b>	<b>6262</b>	<b>4</b>	<b>N.C.</b>	<b>N.C.</b>	<b>6242</b>	<b>175</b>
P.H.O.L. - Ottawa	646	0	0	0	0	0	646	1	539	0	0	0	0	0	539	0	538	0	539	24	538	2
CHEO - Ottawa	5379	0	0	1	1	1	4976	5	1118	0	0	0	0	0	993	15	993	1	993	111	993	5
P.H.O.L. - Kingston	910	0	0	1	1	0	910	0	587	0	0	0	0	0	587	4	580	0	587	108	580	0
UHN / Mount Sinai Hospital	16222	2	0	2	4	1	16153	7	10687	3	2	5	8	0	9061	10	10647	10	10444	105	8483	6
P.H.O.L. - Toronto	7039	0	0	0	0	0	7036	3	6038	0	0	0	0	3	6039	19	6036	2	6038	170	6036	6
Sick Kids Hospital - Toronto	1237	0	0	0	0	0	0	0	1237	0	0	0	0	0	1237	18	1237	0	1237	119	1237	1
Sunnybrook & Women's College HSC	0	0	0	0	0	0	0	0	0	0	0	0	0	0	0	0	0	0	0	0	0	0
P.H.O.L. - Sault Ste. Marie	179	0	0	2	2	0	177	0	103	0	0	0	0	0	103	0	103	0	103	6	103	0
P.H.O.L. - Timmins	633	0	0	0	0	0	633	0	173	0	0	0	0	0	173	0	172	0	173	31	172	0
St. Joseph's - London	218	0	0	0	0	0	218	0	55	0	0	0	0	0	55	0	55	0	91	8	36	0
P.H.O.L. - London	1998	1	0	5	6	2	1988	0	1337	0	0	0	0	2	1337	2	1331	0	1337	127	1331	3
P.H.O.L. - Orillia	412	0	0	1	1	0	410	0	204	0	0	0	0	0	204	2	204	0	204	12	204	0
P.H.O.L. - Thunder Bay	423	0	0	0	0	0	423	0	403	0	0	0	0	0	404	3	403	0	403	138	403	0
P.H.O.L. - Sudbury	522	0	0	0	0	0	520	0	346	0	0	0	0	4	346	3	346	0	346	30	346	5
P.H.O.L. - Hamilton	1561	0	0	0	0	0	1506	1	1252	0	0	0	0	0	1252	2	1252	0	1252	103	1252	0
P.H.O.L. - Peterborough	561	0	0	1	1	0	515	0	402	0	0	0	0	0	402	0	401	0	402	26	401	0
St. Joseph's - Hamilton	10483	0	0	0	0	0	10483	3	10483	0	0	2	0	0	10483	23	10483	0	10483	477	0	0
<b>Province of Ontario</b>	<b>48423</b>	<b>3</b>	<b>0</b>	<b>13</b>	<b>16</b>	<b>4</b>	<b>46594</b>	<b>20</b>	<b>34964</b>	<b>3</b>	<b>2</b>	<b>7</b>	<b>8</b>	<b>9</b>	<b>33215</b>	<b>101</b>	<b>34781</b>	<b>13</b>	<b>34632</b>	<b>1595</b>	<b>22115</b>	<b>28</b>
Manitoba	64567	0	1	3	4	2	64557	69	2870	0	1	2	0	0	2870	20	3985	1	2870	176	3985	6
Province of Saskatchewan	172033	0	0	1	1	0	27166	4	2105	0	0	1	1	0	2105	18	2105	4	2105	216	2105	13
Province of Alberta	133682	7	0	6	13	0	79905	0	79905	2	20	7	9	0	79905	167	79905	11	79905	6901	79905	31
<b>Prairies</b>	<b>370282</b>	<b>7</b>	<b>1</b>	<b>10</b>	<b>18</b>	<b>2</b>	<b>171628</b>	<b>73</b>	<b>84880</b>	<b>2</b>	<b>21</b>	<b>10</b>	<b>10</b>	<b>0</b>	<b>84880</b>	<b>205</b>	<b>85995</b>	<b>16</b>	<b>84880</b>	<b>7293</b>	<b>85995</b>	<b>50</b>
<b>British Columbia</b>	<b>91440</b>	<b>3</b>	<b>8</b>	<b>1</b>	<b>10</b>	<b>8</b>	<b>90941</b>	<b>6</b>	<b>20078</b>	<b>2</b>	<b>4</b>	<b>1</b>	<b>14</b>	<b>6</b>	<b>20624</b>	<b>132</b>	<b>20421</b>	<b>68</b>	<b>20210</b>	<b>1652</b>	<b>16059</b>	<b>24</b>
Yukon	7331	0	0	8	8	7	7240	4	N.C.	N.C.	N.C.	N.C.	N.C.	N.C.	N.C.	N.C.	N.C.	N.C.	N.C.	N.C.	N.C.	N.C.
Northwest Territories	1214	0	0	0	0	0	1157	0	1157	0	0	0	1	0	1157	12	1157	1	1157	326	1157	1
Nunavut	1126	0	0	0	0	0	1103	0	1103	3	1	0	0	0	1103	25	1103	5	1103	282	191	0
<b>Territories</b>	<b>9671</b>	<b>0</b>	<b>0</b>	<b>8</b>	<b>8</b>	<b>7</b>	<b>9500</b>	<b>4</b>	<b>2260</b>	<b>3</b>	<b>1</b>	<b>0</b>	<b>1</b>	<b>0</b>	<b>2260</b>	<b>37</b>	<b>2260</b>	<b>6</b>	<b>2260</b>	<b>608</b>	<b>1348</b>	<b>1</b>
<b>CANADA</b>	<b>627492</b>	<b>13</b>	<b>9</b>	<b>33</b>	<b>53</b>	<b>22</b>	<b>383159</b>	<b>355</b>	<b>169297</b>	<b>77</b>	<b>38</b>	<b>158</b>	<b>36</b>	<b>15</b>	<b>168152</b>	<b>858</b>	<b>169957</b>	<b>110</b>	<b>162406</b>	<b>13979</b>	<b>138904</b>	<b>282</b>

The data in the RVDSS report represent surveillance data available at the time of writing. Data not collected by reporting lab denoted by N.C.

Specimens from Yukon (YT), Northwest Territories (NT) and Nunavut (NU) are sent to reference laboratories in other provinces and reported results reflect specimens identified as originating from YT, NT or NU.

Results from British Columbia comprise of specimens from the following sites: BC Children's and Women's Hospital, Children's and Women's Hospital Laboratory, Fraser Health Medical Microbiology Laboratory, Island Health, Providence Health Care, Powell River Hospital, St. Paul's Hospital, Vancouver General Hospital, Victoria General Hospital, BCCDC Public Health Laboratory, Interior Health Authority sites and Northern Health Authority sites.

Delays in the reporting of data may cause data to change retrospectively. Due to these delays, the sum of weekly report totals do not add up to cumulative totals.

Influenza co-detections may cause the sum of A(H1N1)pdm09, A(H3), and A(UnS) positive results to exceed the sum of Total Flu A Positive results.

**Figure 2: Number of positive respiratory virus tests reported by participating laboratories in Canada by surveillance week**

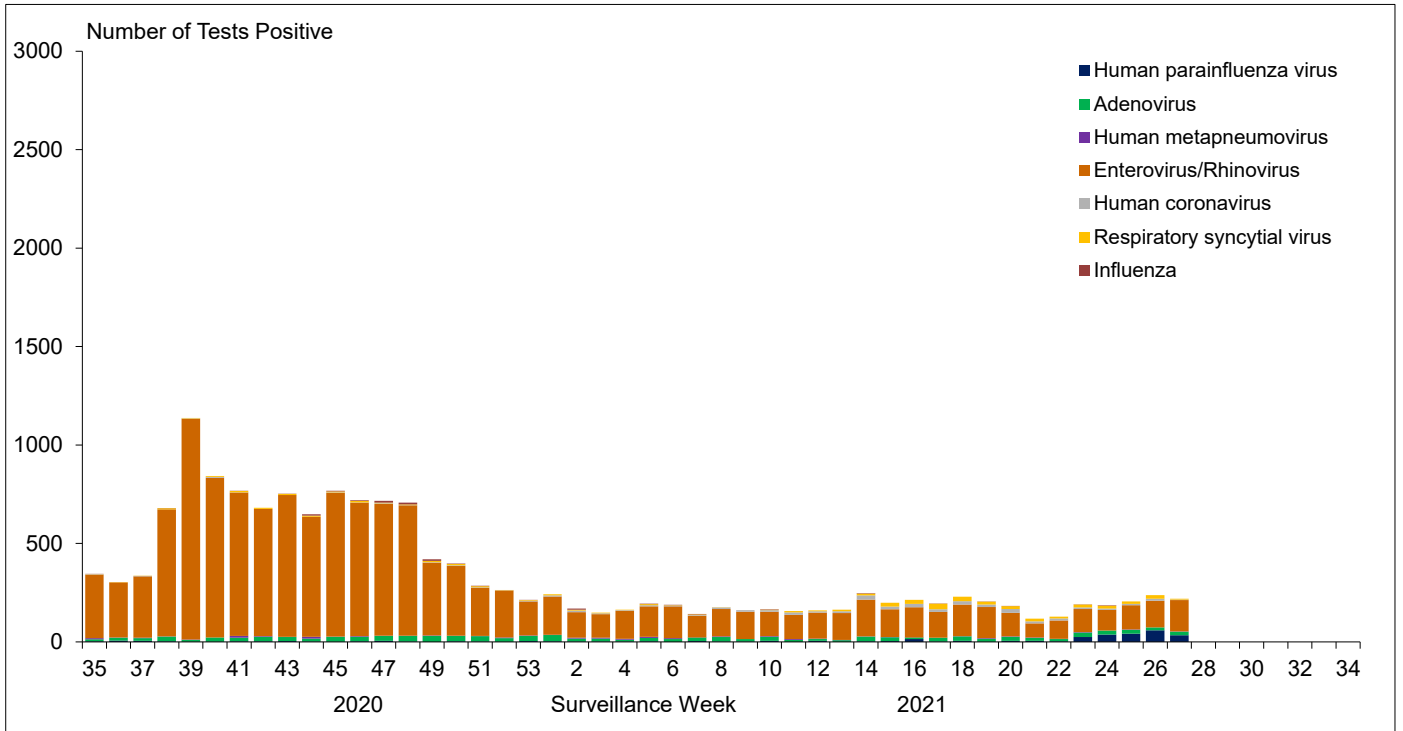


Figure 3: Positive Influenza (Flu) tests (%) in Canada by region by surveillance week

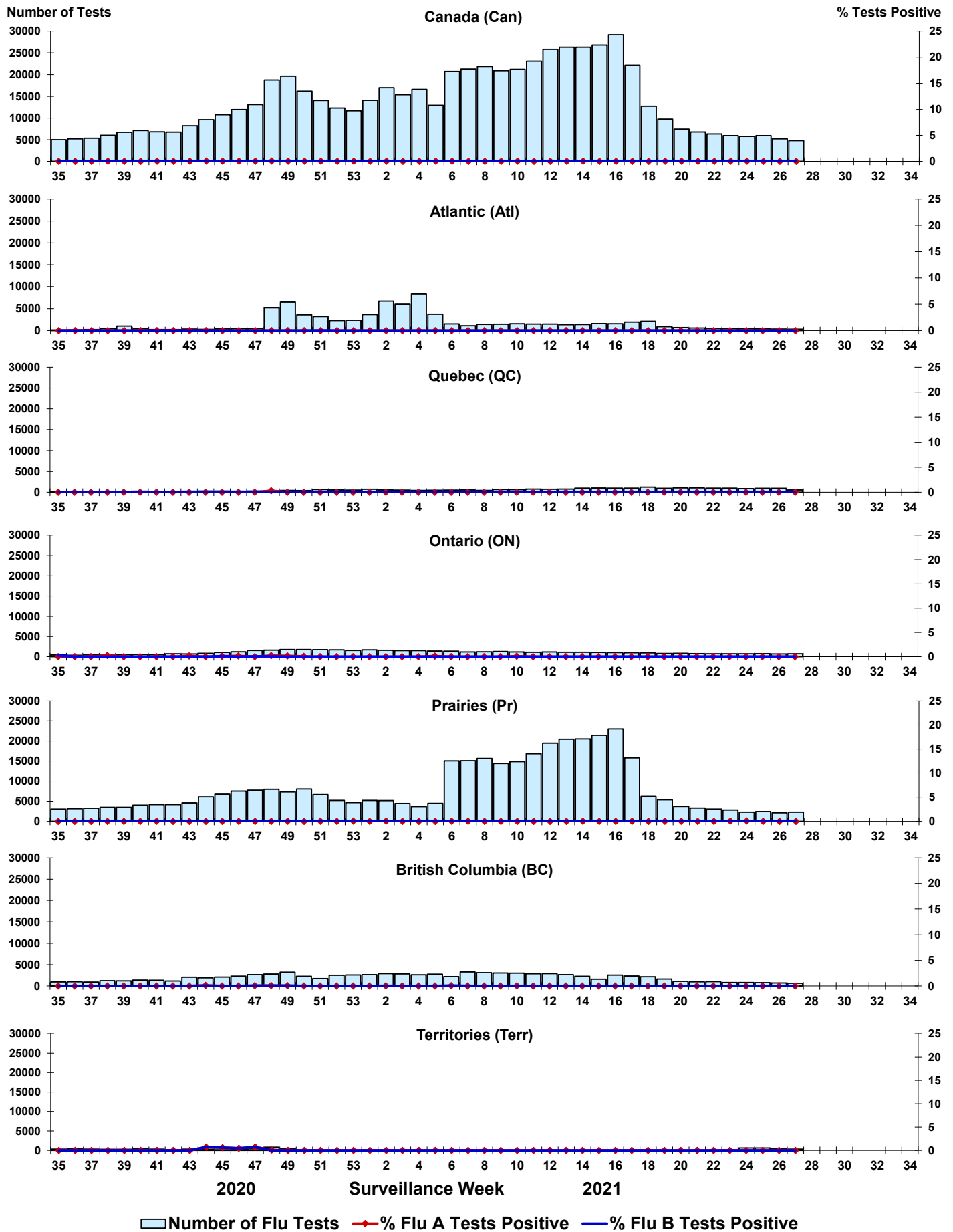


Figure 4: Positive Respiratory syncytial virus (RSV) tests (%) in Canada by region by surveillance week

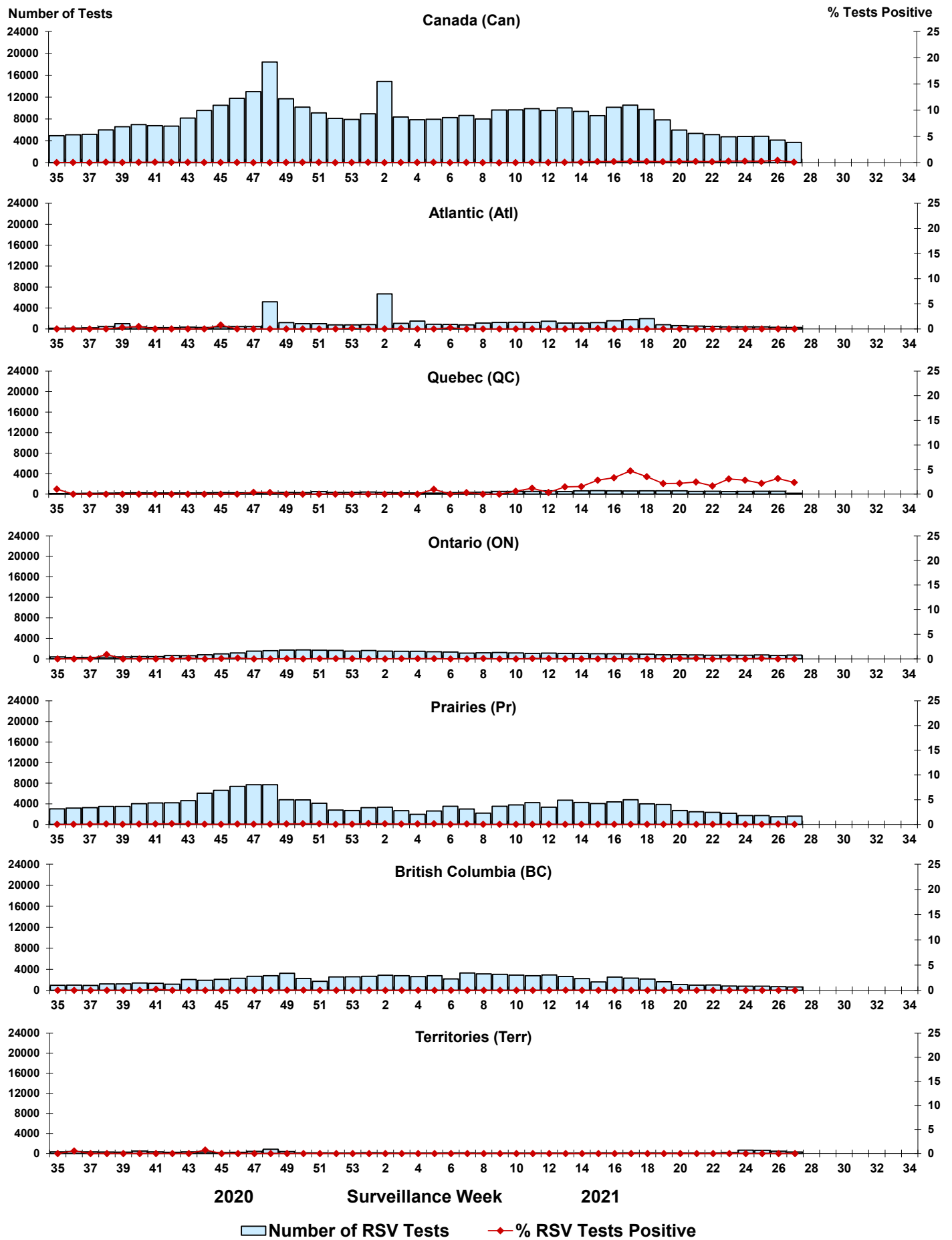


Figure 5: Positive Human parainfluenza virus (HPIV) tests (%) in Canada by region by surveillance week

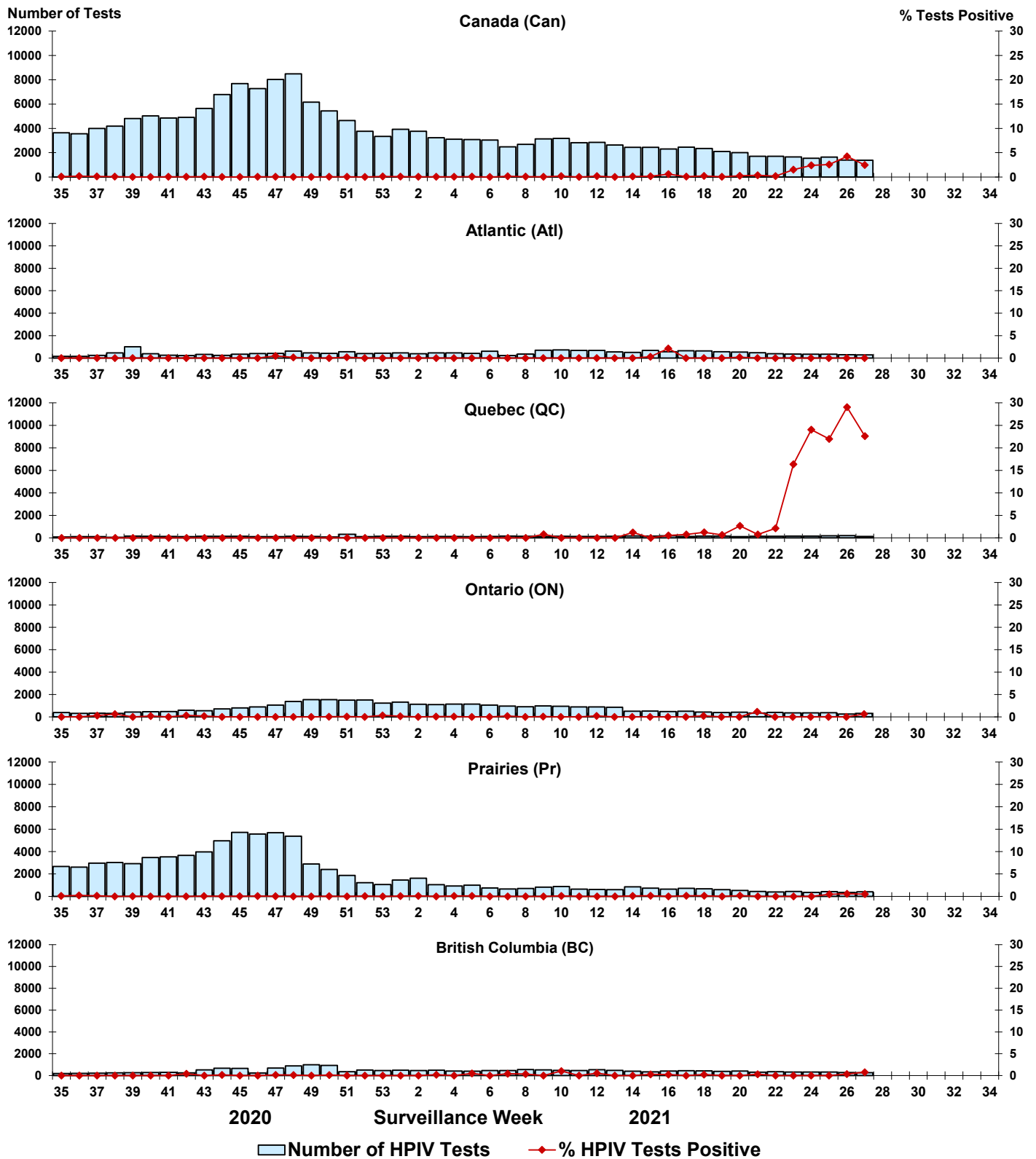




Figure 6: Positive Adenovirus (ADV) tests (%) in Canada by region by surveillance week

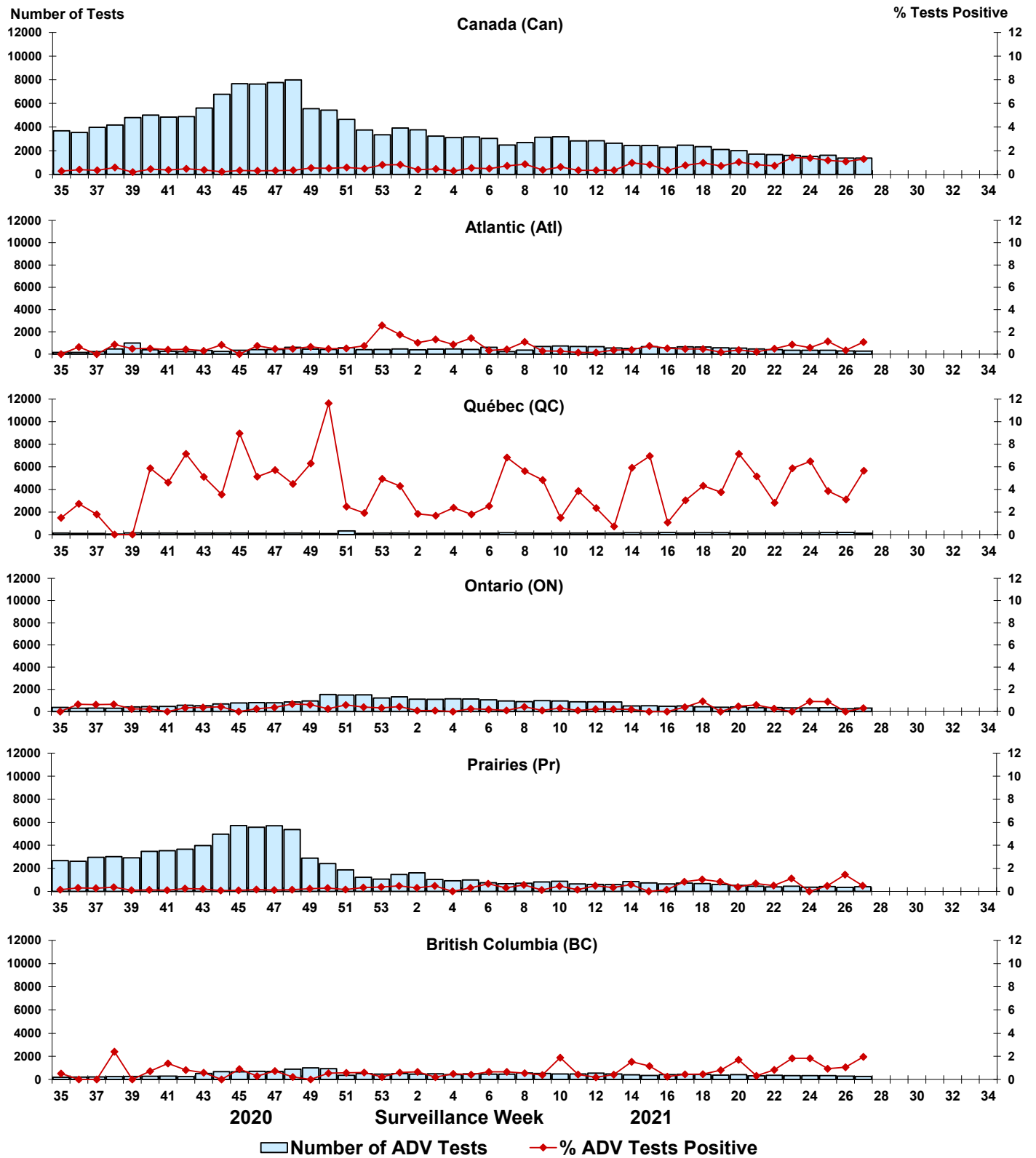


Figure 7: Positive Human metapneumovirus (HMPV) tests (%) in Canada by region by surveillance week

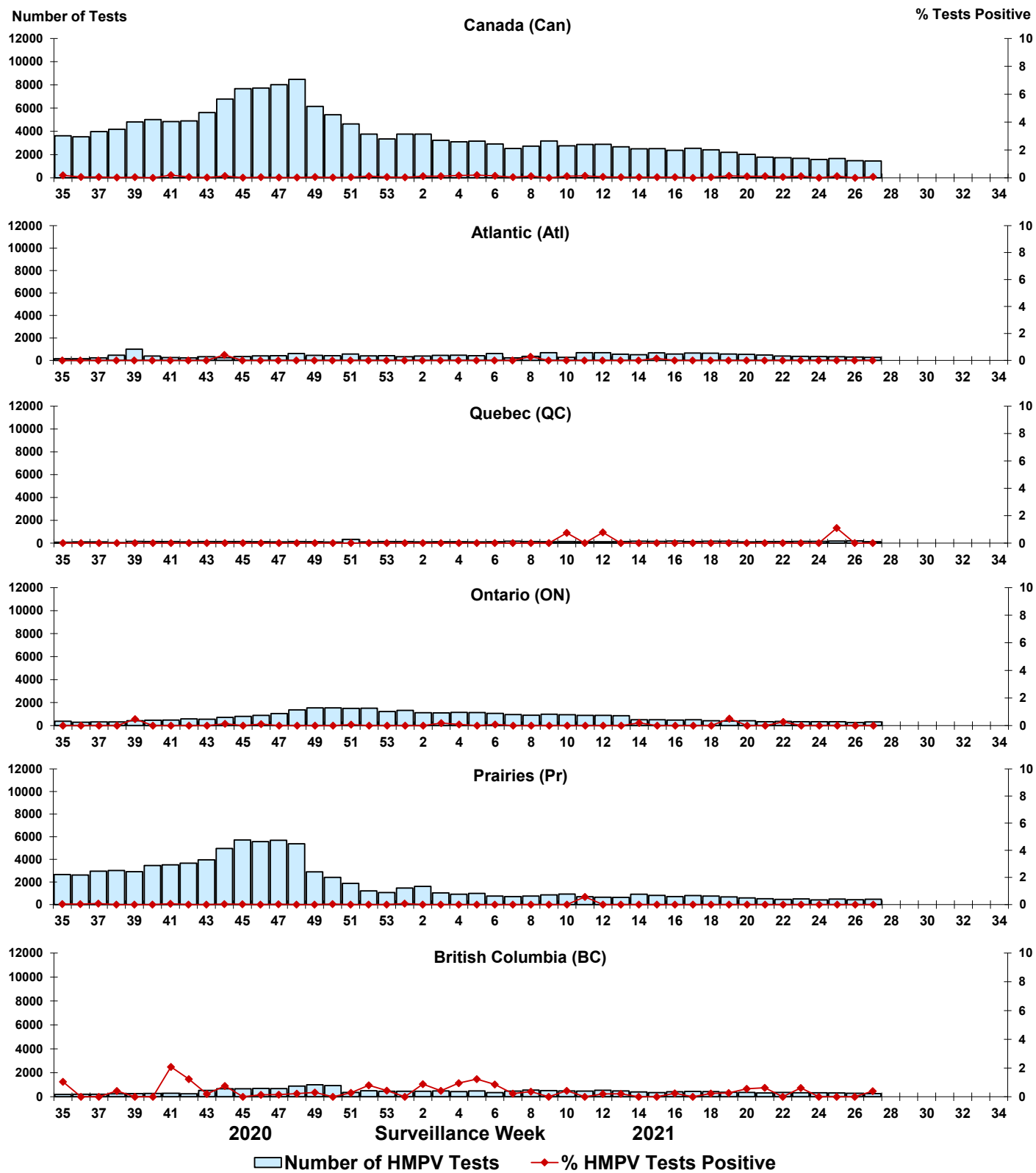


Figure 8: Positive Enterovirus/Rhinovirus (EV/RV) tests (%) in Canada by region by surveillance week

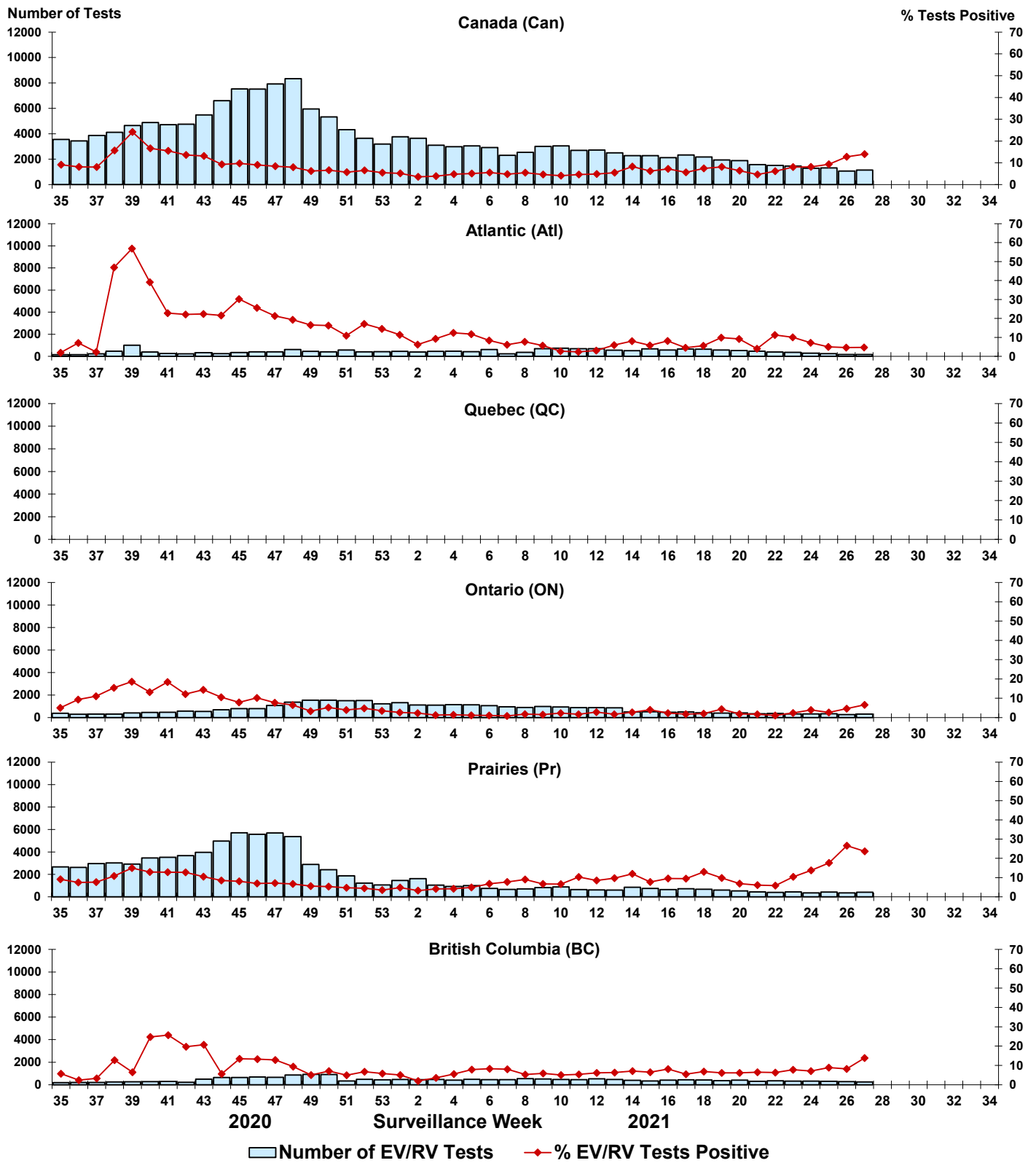
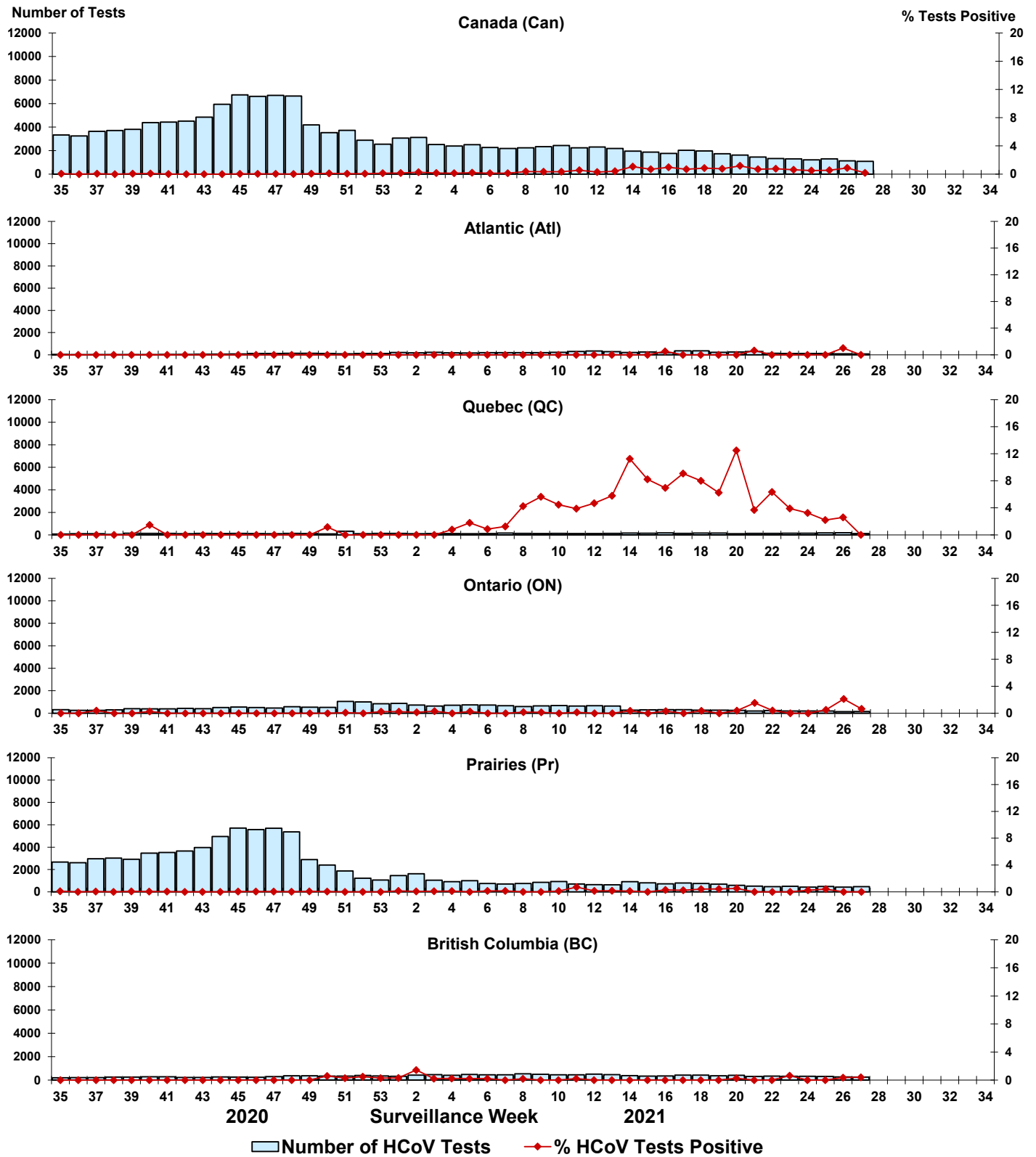


Figure 9: Positive Human coronavirus (HCoV) tests (%) in Canada by region by surveillance week



## **Abbreviations:**

Flu: Influenza

A(H1)pdm09: Influenza A(H1N1)pdm09

A(H3): Influenza A(H3N2)

A(UnS): Influenza A(Unsubtyped)

RSV: Respiratory syncytial virus

HPIV: Human parainfluenza virus

HMPV: Human metapneumovirus

ADV: Adenovirus

EV/RV: Enterovirus/Rhinovirus

HCoV: Human coronavirus

Atl: Atlantic Canada

BC: British Columbia

Can: Canada

CHEO: Children's Hospital of Eastern Ontario

HSC: Health Sciences Centre

N.C.: Data not collected

N.R.: Data not reported for current week

ON: Ontario

PR: Prairies

P.H.O.L.: Public Health Ontario Laboratory

QC: Quebec

Terr: Territories of Canada

UHN: University Health Network