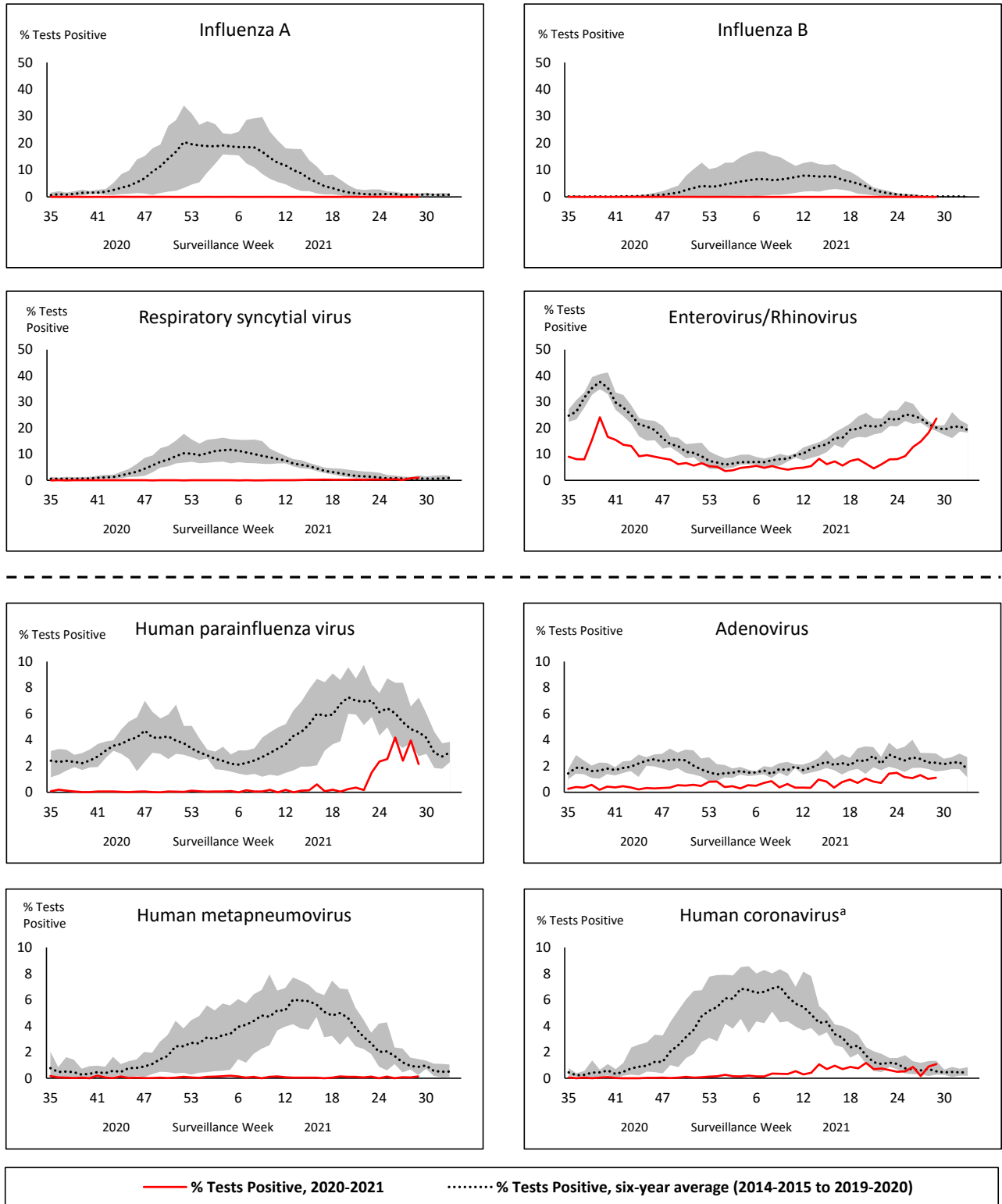


Respiratory Virus Report, Week 29 - ending July 24, 2021

The Respiratory Virus Detection Surveillance System collects data from select laboratories across Canada on the number of tests performed and the number of tests positive for influenza and other respiratory viruses. Data are reported on a weekly basis year-round to the Centre for Immunization and Respiratory Infectious Diseases (CIRID), Public Health Agency of Canada. These data are also summarized in the weekly FluWatch report.

In this Respiratory Virus Report, the number of detections of coronavirus reflects only seasonal human coronaviruses, not the novel pandemic coronavirus (SARS-CoV-2) that causes COVID-19. For information on COVID-19, see the [Coronavirus disease \(COVID-19\): Outbreak update](#).

Figure 1: Positive respiratory virus tests (%) reported by participating laboratories in Canada by surveillance week compared to average and range from 2014-2015 to 2019-2020 season



Shaded area represents the maximum and minimum % of respiratory virus tests positive reported by week from seasons 2014-2015 to 2019-2020

Note: Data from week 11 of the 2019-2020 season onwards is excluded from the historical comparison due to the COVID-19 pandemic

Note: % Tests Positive scale changes across the dashed line

^a Human coronavirus excludes human coronaviruses SARS-CoV, MERS-CoV and SARS-CoV-2; Includes seasonal human coronaviruses HCoV-229E, HCoV-OC43, HCoV-NL63, HCoV-HKU1.

Table 1: Respiratory virus detections for the week ending July 24, 2021 (surveillance week 2021-29)

Reporting Laboratory	Flu Tested	A(H1)pdm09 Positive	A(H3) Positive	A(UnS) Positive	Total Flu A Positive	Total Flu B Positive	RSV Tested	RSV Positive	HPIV Tested	HPIV 1 Positive	HPIV 2 Positive	HPIV 3 Positive	HPIV 4 Positive	Other HPIV Positive	ADV Tested	ADV Positive	HMPV Tested	HMPV Positive	EV/RV Tested	EV/RV Positive	HCoV Tested	HCoV Positive
Newfoundland	188	0	0	0	0	0	188	0	188	0	0	0	0	0	188	0	188	0	93	2	N.C.	N.C.
Prince Edward Island	38	0	0	0	0	0	38	0	38	0	0	0	0	0	38	1	38	0	38	10	38	0
Nova Scotia	25	0	0	0	0	0	35	0	33	0	0	0	0	0	33	0	33	0	33	1	33	0
New Brunswick	49	0	0	0	0	0	33	0	17	0	0	0	0	0	17	0	17	0	17	2	17	0
Atlantic	300	0	0	0	0	0	294	0	276	0	0	0	0	0	276	1	276	0	181	15	88	0
Région Nord-Est	434	0	0	0	0	0	19	0	0	0	0	0	0	0	0	0	0	0	N.C.	N.C.	0	0
Québec-Chaudière-Appalaches	5	0	0	0	0	0	3	0	38	0	0	7	0	0	38	2	38	0	N.C.	N.C.	38	0
Centre-du-Québec	9	0	0	0	0	0	9	0	12	0	0	0	0	0	12	1	12	0	N.C.	N.C.	12	0
Montréal-Laval	467	0	0	0	0	0	466	34	180	0	0	21	0	0	180	6	180	0	N.C.	N.C.	180	6
Ouest du Québec	64	0	0	0	0	0	12	1	0	0	0	0	0	0	0	0	0	0	N.C.	N.C.	0	0
Montérégie	10	0	0	0	0	0	10	1	0	0	0	0	0	0	0	0	0	0	N.C.	N.C.	0	0
Province of Québec	989	0	0	0	0	0	519	36	230	0	0	28	0	0	230	9	230	0	N.C.	N.C.	230	6
P.H.O.L. - Ottawa	10	0	0	0	0	0	10	0	9	0	0	0	0	0	9	0	9	0	9	0	9	0
CHEO - Ottawa	60	0	0	0	0	0	60	0	12	0	0	0	0	0	12	1	12	0	12	3	12	1
P.H.O.L. - Kingston	2	0	0	0	0	0	2	0	1	0	0	0	0	0	1	0	1	0	1	0	1	0
UHN / Mount Sinai Hospital	330	0	0	0	0	0	330	0	9	0	0	0	0	0	9	0	9	0	9	0	9	0
P.H.O.L. - Toronto	95	0	0	0	0	0	95	0	86	0	0	0	0	0	86	1	86	1	86	7	86	0
Sick Kids Hospital - Toronto	N.R.	N.R.	N.R.	N.R.	N.R.	N.R.	N.R.	N.R.	N.R.	N.R.	N.R.	N.R.	N.R.	N.R.	N.R.	N.R.	N.R.	N.R.	N.R.	N.R.	N.R.	N.R.
Sunnybrook & Women's College HSC	N.R.	N.R.	N.R.	N.R.	N.R.	N.R.	N.R.	N.R.	N.R.	N.R.	N.R.	N.R.	N.R.	N.R.	N.R.	N.R.	N.R.	N.R.	N.R.	N.R.	N.R.	N.R.
P.H.O.L. - Sault Ste. Marie	0	0	0	0	0	0	0	0	0	0	0	0	0	0	0	0	0	0	0	0	0	0
P.H.O.L. - Timmins	0	0	0	0	0	0	0	0	0	0	0	0	0	0	0	0	0	0	0	0	0	0
St. Joseph's - London	N.R.	N.R.	N.R.	N.R.	N.R.	N.R.	N.R.	N.R.	N.R.	N.R.	N.R.	N.R.	N.R.	N.R.	N.R.	N.R.	N.R.	N.R.	N.R.	N.R.	N.R.	N.R.
P.H.O.L. - London	11	0	0	0	0	0	11	0	7	0	0	0	0	0	7	0	7	0	7	0	7	0
P.H.O.L. - Orillia	4	0	0	0	0	0	4	0	0	0	0	0	0	0	0	0	0	0	0	0	0	0
P.H.O.L. - Thunder Bay	3	0	0	0	0	0	3	0	3	0	0	0	0	0	3	0	3	0	3	2	3	0
P.H.O.L. - Sudbury	8	0	0	0	0	0	8	1	6	0	0	0	0	0	6	0	6	0	6	1	6	1
P.H.O.L. - Hamilton	11	0	1	0	1	0	10	0	9	0	0	0	0	0	9	0	9	0	9	0	9	0
P.H.O.L. - Peterborough	6	0	0	0	0	0	6	0	6	0	0	0	0	0	6	0	6	0	6	0	6	0
St. Joseph's - Hamilton	N.R.	N.R.	N.R.	N.R.	N.R.	N.R.	N.R.	N.R.	N.R.	N.R.	N.R.	N.R.	N.R.	N.R.	N.R.	N.R.	N.R.	N.R.	N.R.	N.R.	N.R.	N.R.
Province of Ontario	540	0	1	0	1	0	539	1	148	0	0	0	0	0	148	2	148	1	148	13	148	2
Province of Manitoba	1231	0	0	0	0	0	1231	0	36	0	0	1	0	0	36	0	76	0	36	1	76	1
Province of Saskatchewan	26	0	0	0	0	0	26	0	33	0	0	0	0	0	33	0	33	0	33	11	33	0
Province of Alberta	1220	0	0	0	0	0	447	0	447	0	0	0	0	0	447	2	447	0	447	178	447	3
Prairies	2477	0	0	0	0	0	1704	0	516	0	0	1	0	0	516	2	556	0	516	190	556	4
British Columbia	461	0	0	0	0	0	460	0	174	0	0	0	0	0	174	1	174	1	174	21	174	1
Yukon	118	0	0	0	0	0	118	0	N.C.	N.C.	N.C.	N.C.	N.C.	N.C.	N.C.	N.C.	N.C.	N.C.	N.C.	N.C.	N.C.	N.C.
Northwest Territories	2	0	0	0	0	0	2	0	2	0	0	0	0	0	2	0	2	0	2	2	2	0
Nunavut	1	0	0	0	0	0	1	0	1	0	0	0	0	0	1	0	1	0	1	1	1	0
Territories	121	0	0	0	0	0	121	0	3	0	0	0	0	0	3	0	3	0	3	3	3	0
CANADA	4888	0	1	0	1	0	3637	37	1347	0	0	29	0	0	1347	15	1387	2	1022	242	1199	13

The data in the RVDSS report represent surveillance data available at the time of writing. Data missing from the current week are denoted by N.R. Data not collected by reporting lab denoted by N.C.

Specimens from Yukon (YT), Northwest Territories (NT) and Nunavut (NU) are sent to reference laboratories in other provinces and reported results reflect specimens identified as originating from YT, NT or NU.

Results from British Columbia comprise of specimens from the following sites: BC Children's and Women's Hospital, Children's and Women's Hospital Laboratory, Fraser Health Medical Microbiology Laboratory, Island Health, Providence Health Care, Powell River Hospital, St. Paul's Hospital, Vancouver General Hospital, Victoria General Hospital, BCCDC Public Health Laboratory, Interior Health Authority sites and Northern Health Authority sites.

Delays in the reporting of data may cause data to change retrospectively.

Influenza co-detections may cause the sum of A(H1)pdm09, A(H3), and A(UnS) positive results to exceed the sum of Total Flu A Positive results.

Table 2: Cumulative respiratory virus detections from August 23, 2020 to July 24, 2021 (surveillance week 2020-35 to 2021-29)

Reporting Laboratory	Flu Tested	A(H1)pdm09 Positive	A(H3) Positive	A(UnS) Positive	Total Flu A Positive	Total Flu B Positive	RSV Tested	RSV Positive	HPIV Tested	HPIV 1 Positive	HPIV 2 Positive	HPIV 3 Positive	HPIV 4 Positive	Other HPIV Positive	ADV Tested	ADV Positive	HMPV Tested	HMPV Positive	EV/RV Tested	EV/RV Positive	HCoV Tested	HCoV Positive
Newfoundland	14073	0	0	0	0	0	14072	10	14072	1	0	3	0	0	14085	57	13485	2	13455	2211	N.C.	N.C.
Prince Edward Island	4221	0	0	0	0	0	4221	4	4217	3	0	0	1	0	4217	43	4217	0	4217	492	4217	2
Nova Scotia	8649	0	0	0	0	0	8662	0	1505	0	10	0	1	0	1505	16	1505	1	1505	89	1533	0
New Brunswick	54748	0	0	0	0	1	20639	0	1705	0	0	0	0	0	1696	11	1696	0	1696	64	1651	2
Atlantic	81691	0	0	0	0	1	47594	14	21499	4	10	3	2	0	21503	127	20903	3	20873	2856	7401	4
Région Nord-Est	10280	0	0	0	0	0	1255	1	8	0	0	0	0	0	8	1	8	0	N.C.	N.C.	8	0
Québec-Chaudière-Appalaches	921	0	0	1	1	0	1042	3	896	0	0	46	1	0	898	52	893	0	N.C.	N.C.	876	31
Centre-du-Québec	977	0	0	0	0	0	985	2	477	0	0	17	0	0	475	26	477	0	N.C.	N.C.	474	17
Montréal-Laval	12524	0	0	0	0	0	11567	296	5302	88	0	143	0	0	5356	197	5286	4	N.C.	N.C.	5286	139
Ouest du Québec	2629	0	0	0	0	0	2520	1	0	0	0	0	0	0	0	0	0	0	N.C.	N.C.	0	0
Montérégie	1271	0	0	0	0	0	1271	3	0	0	0	0	0	0	0	0	0	0	N.C.	N.C.	0	0
Province of Québec	28602	0	0	1	1	0	18640	306	6683	88	0	206	1	0	6737	276	6664	4	N.C.	N.C.	6644	187
P.H.O.L. - Ottawa	673	0	0	0	0	0	673	1	562	0	0	0	0	0	562	0	561	0	562	26	561	2
CHEO - Ottawa	5481	0	0	1	1	1	5078	5	1148	0	0	3	0	0	1023	17	1023	1	1023	114	1023	7
P.H.O.L. - Kingston	921	0	0	1	1	0	921	0	595	0	0	0	0	0	595	5	588	0	595	109	588	0
UHN / Mount Sinai Hospital	16917	2	0	2	4	1	16848	7	10711	3	2	5	8	0	9085	10	10671	10	10468	105	8507	7
P.H.O.L. - Toronto	7249	0	0	0	0	0	7246	3	6214	0	0	0	0	4	6215	20	6212	3	6214	181	6212	6
Sick Kids Hospital - Toronto	1380	0	0	0	0	0	0	0	1380	0	0	1	0	0	1380	21	1380	0	1380	134	1380	1
Sunnybrook & Women's College HSC	0	0	0	0	0	0	0	0	0	0	0	0	0	0	0	0	0	0	0	0	0	0
P.H.O.L. - Sault Ste. Marie	179	0	0	2	2	0	177	0	103	0	0	0	0	0	103	0	103	0	103	6	103	0
P.H.O.L. - Timmins	635	0	0	0	0	0	635	0	175	0	0	0	0	0	175	1	174	0	175	32	174	0
St. Joseph's - London	218	0	0	0	0	0	218	0	55	0	0	0	0	0	55	0	55	0	91	8	36	0
P.H.O.L. - London	2018	1	0	5	6	2	2008	0	1346	0	0	0	0	2	1346	2	1340	0	1346	127	1340	3
P.H.O.L. - Orillia	424	0	0	1	1	0	422	0	204	0	0	0	0	0	204	2	204	0	204	12	204	0
P.H.O.L. - Thunder Bay	429	0	0	0	0	0	429	0	409	0	0	0	0	0	410	3	409	0	409	142	409	0
P.H.O.L. - Sudbury	534	0	0	0	0	0	532	1	353	0	0	0	0	4	353	3	353	0	353	31	353	6
P.H.O.L. - Hamilton	1587	0	1	0	1	0	1531	1	1274	0	0	0	0	0	1274	2	1274	0	1274	103	1274	0
P.H.O.L. - Peterborough	575	0	0	1	1	0	529	0	416	0	0	0	0	0	416	0	415	0	416	26	415	0
St. Joseph's - Hamilton	10624	0	0	0	0	0	10624	3	10624	0	0	4	0	0	10624	24	10624	0	10624	486	0	0
Province of Ontario	49844	3	1	13	17	4	47871	21	35569	3	2	13	8	10	33820	110	35386	14	35237	1642	22579	32
Manitoba	66829	0	1	3	4	2	66819	69	2928	0	1	3	0	0	2928	20	4127	1	2928	181	4127	7
Province of Saskatchewan	172115	0	0	1	1	0	27248	4	2177	0	0	1	1	0	2177	18	2177	4	2177	232	2177	14
Province of Alberta	136227	0	0	1	1	0	80849	0	80849	2	20	7	10	0	80849	170	80849	11	80849	7285	80849	36
Prairies	375171	0	1	5	6	2	174916	73	85954	2	21	11	11	0	85954	208	87153	16	85954	7698	87153	57
British Columbia	92426	3	8	1	10	8	91926	6	20664	2	4	1	14	6	21210	137	20839	70	20623	1692	16469	26
Yukon	7618	0	0	8	8	7	7527	4	N.C.	N.C.	N.C.	N.C.	N.C.	N.C.	N.C.	N.C.	N.C.	N.C.	N.C.	N.C.	N.C.	N.C.
Northwest Territories	1224	0	0	0	0	0	1167	0	1167	0	0	0	1	0	1167	12	1167	1	1167	329	1167	1
Nunavut	1128	0	0	0	0	0	1104	0	1104	3	1	0	0	0	1104	25	1104	5	1104	283	192	0
Territories	9970	0	0	8	8	7	9798	4	2271	3	1	0	1	0	2271	37	2271	6	2271	612	1359	1
CANADA	637704	6	10	28	42	22	390745	424	172640	102	38	234	37	16	171495	895	173216	113	164958	14500	141605	307

The data in the RVDSS report represent surveillance data available at the time of writing. Data not collected by reporting lab denoted by N.C.

Specimens from Yukon (YT), Northwest Territories (NT) and Nunavut (NU) are sent to reference laboratories in other provinces and reported results reflect specimens identified as originating from YT, NT or NU.

Results from British Columbia comprise of specimens from the following sites: BC Children's and Women's Hospital, Children's and Women's Hospital Laboratory, Fraser Health Medical Microbiology Laboratory, Island Health, Providence Health Care, Powell River Hospital, St. Paul's Hospital, Vancouver General Hospital, Victoria General Hospital, BCCDC Public Health Laboratory, Interior Health Authority sites and Northern Health Authority sites.

Delays in the reporting of data may cause data to change retrospectively. Due to these delays, the sum of weekly report totals do not add up to cumulative totals.

Influenza co-detections may cause the sum of A(H1N1)pdm09, A(H3), and A(UnS) positive results to exceed the sum of Total Flu A Positive results.

Figure 2: Number of positive respiratory virus tests reported by participating laboratories in Canada by surveillance week

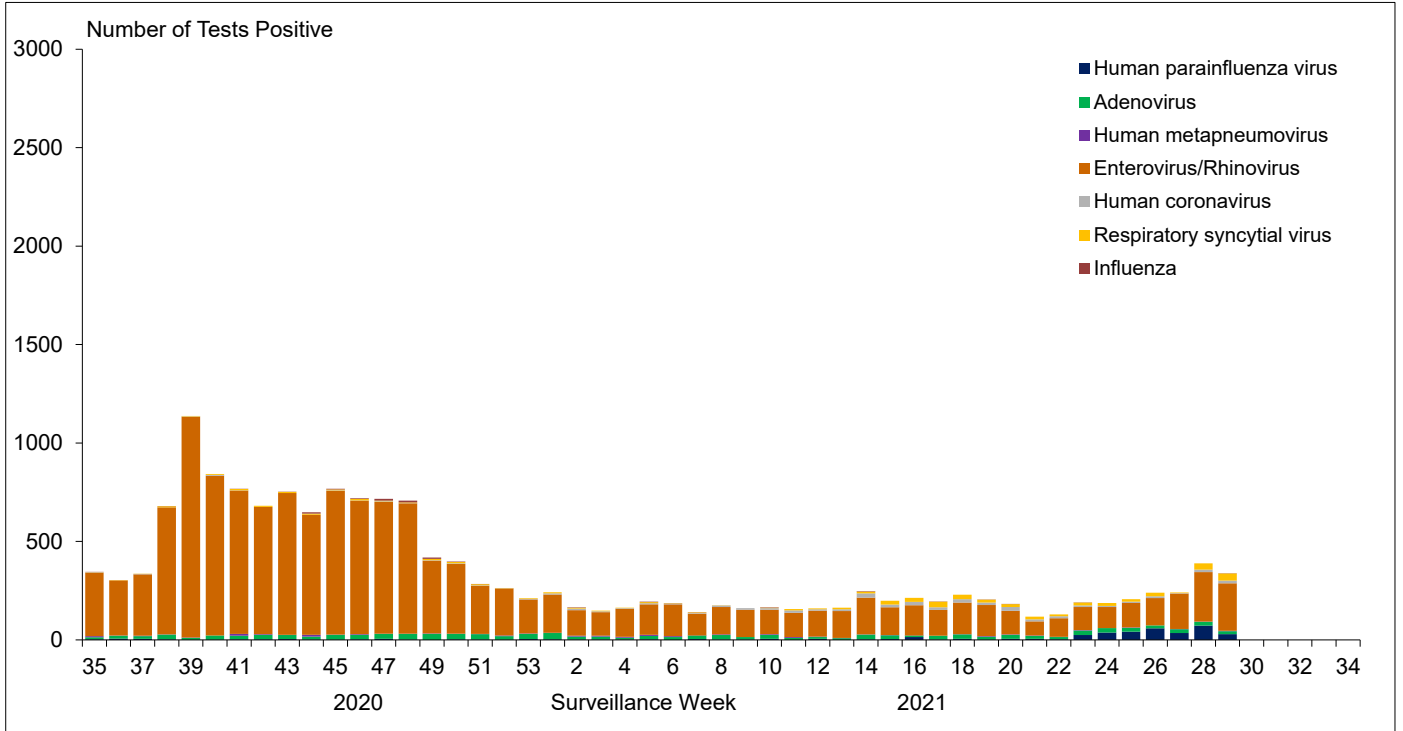


Figure 3: Positive Influenza (Flu) tests (%) in Canada by region by surveillance week

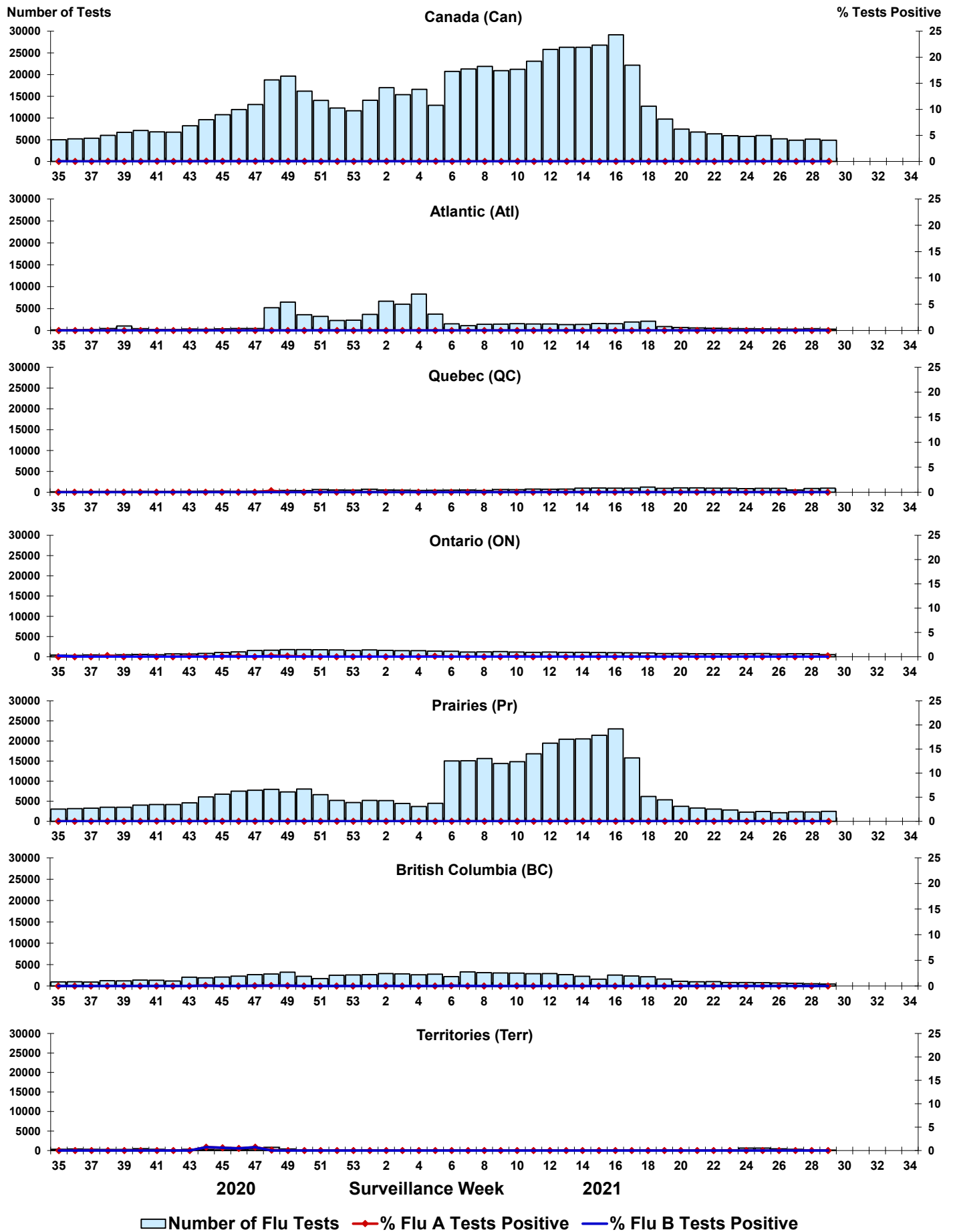


Figure 4: Positive Respiratory syncytial virus (RSV) tests (%) in Canada by region by surveillance week

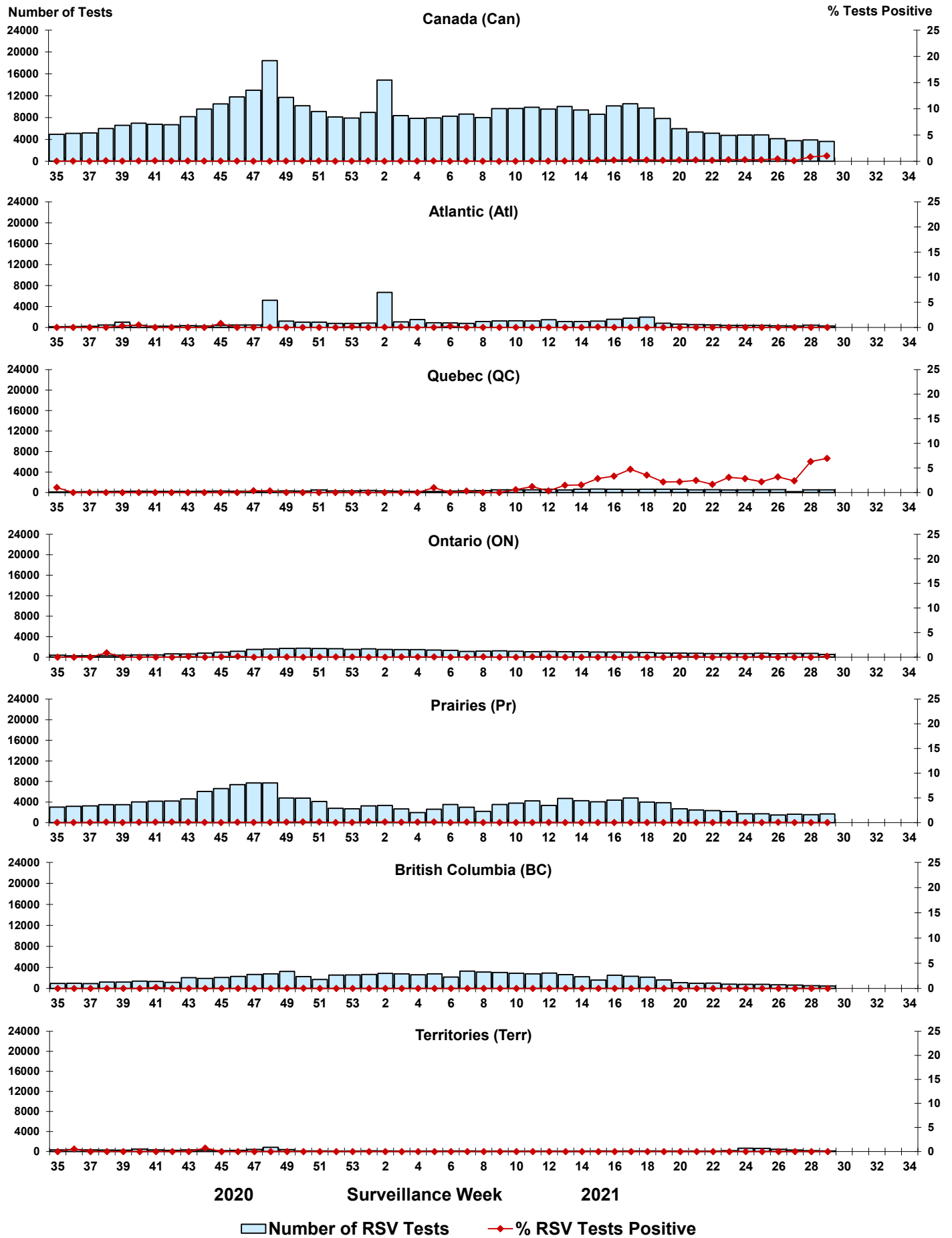


Figure 5: Positive Human parainfluenza virus (HPIV) tests (%) in Canada by region by surveillance week

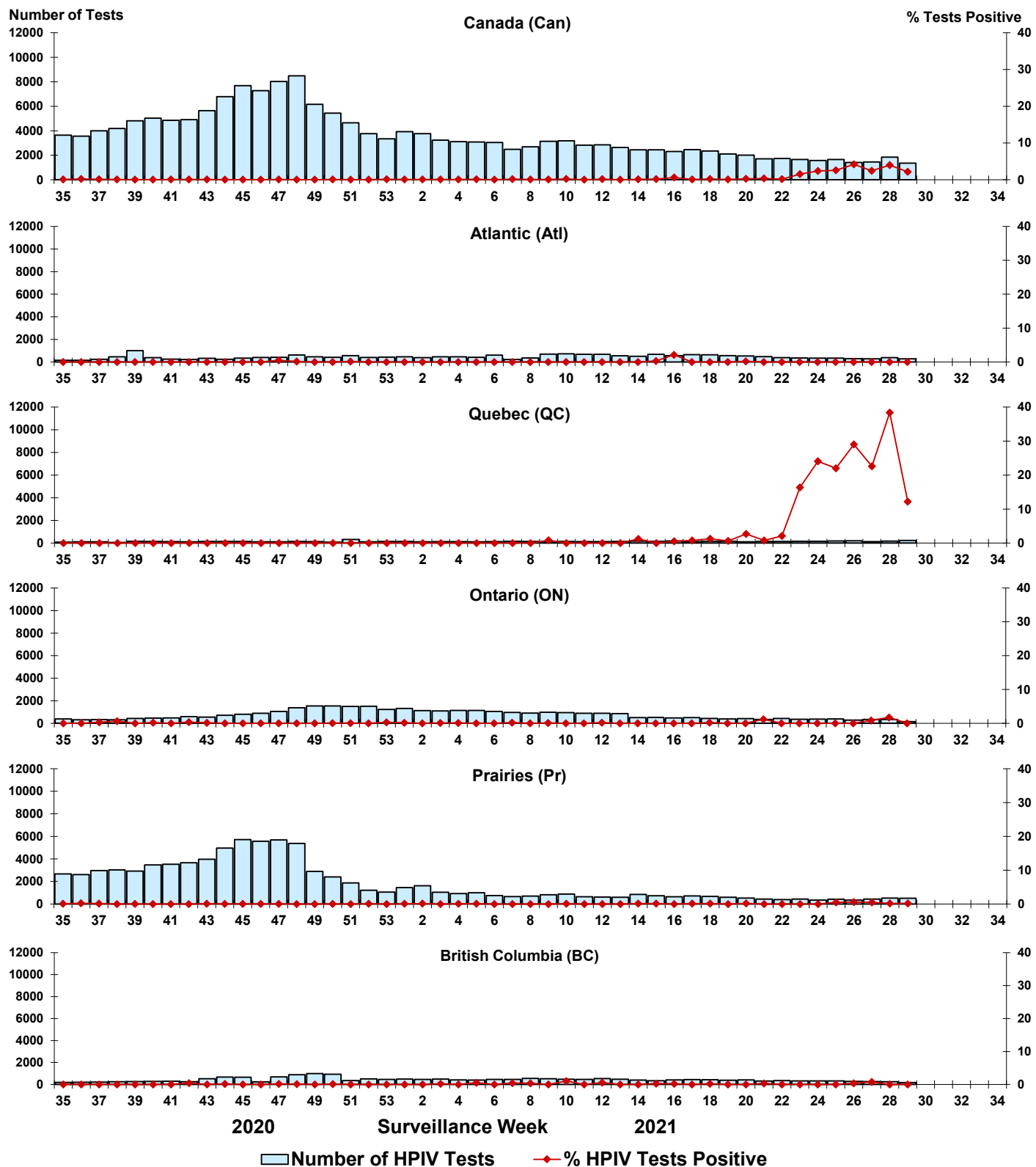


Figure 6: Positive Adenovirus (ADV) tests (%) in Canada by region by surveillance week

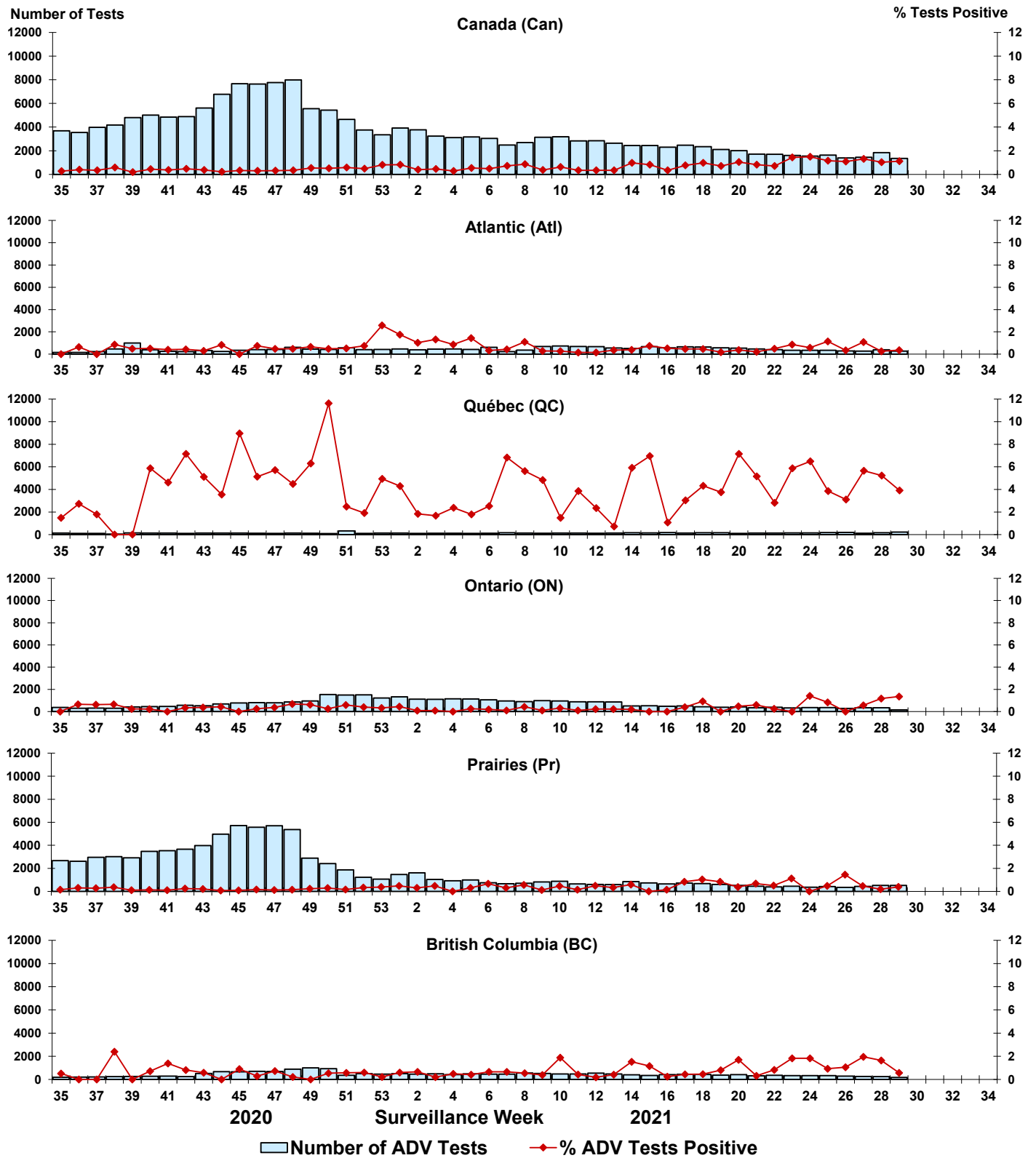


Figure 7: Positive Human metapneumovirus (HMPV) tests (%) in Canada by region by surveillance week

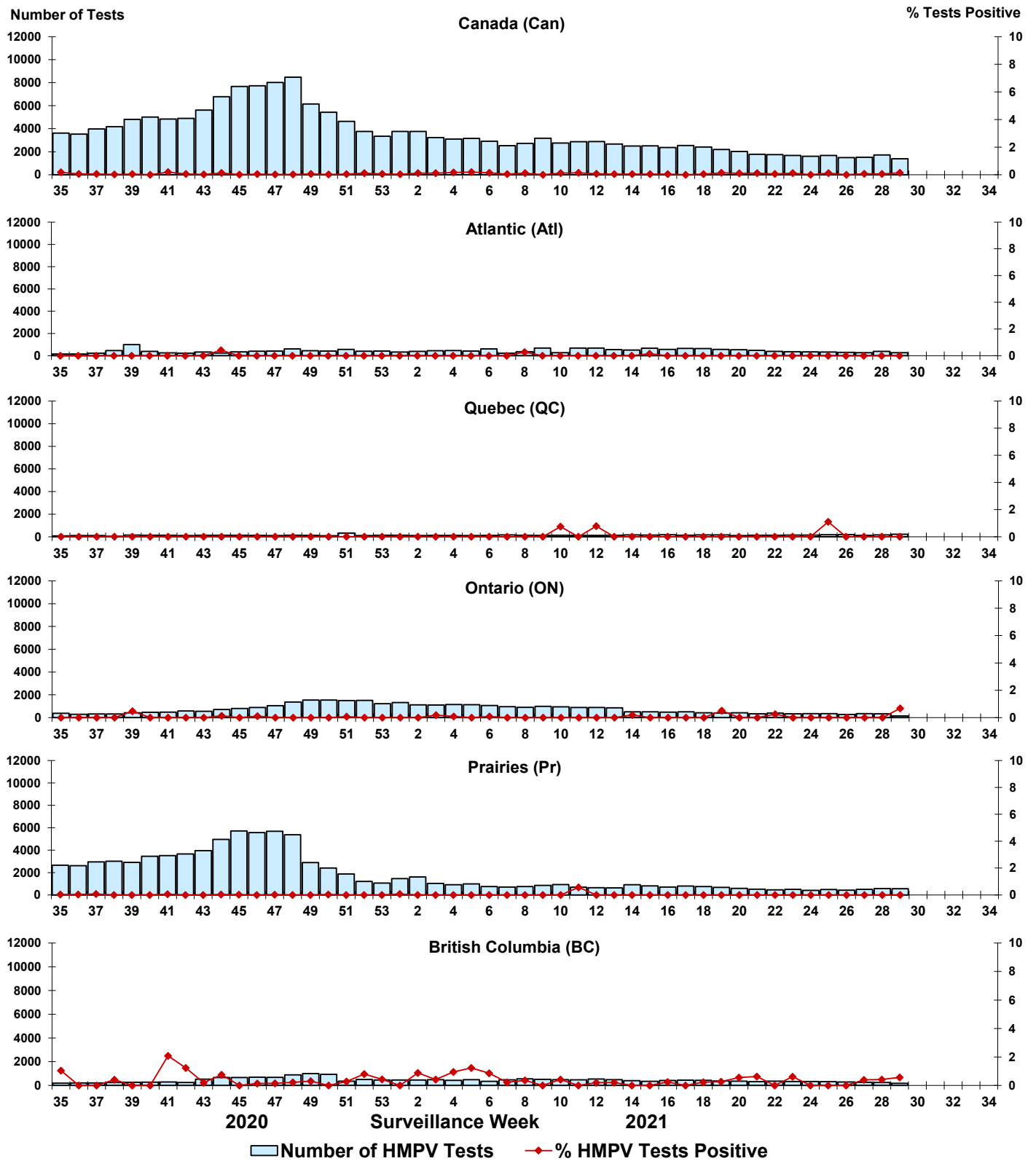


Figure 8: Positive Enterovirus/Rhinovirus (EV/RV) tests (%) in Canada by region by surveillance week

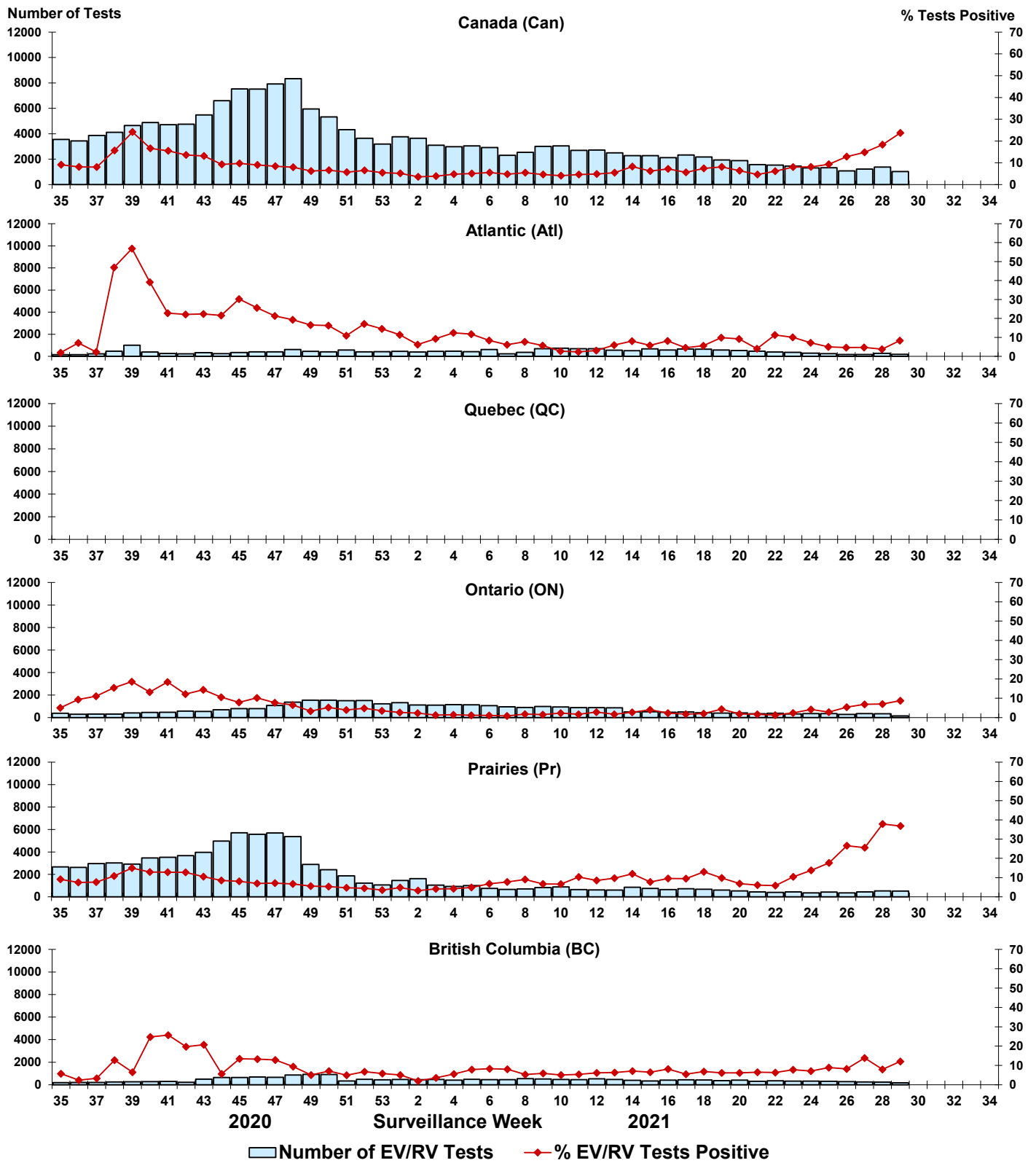
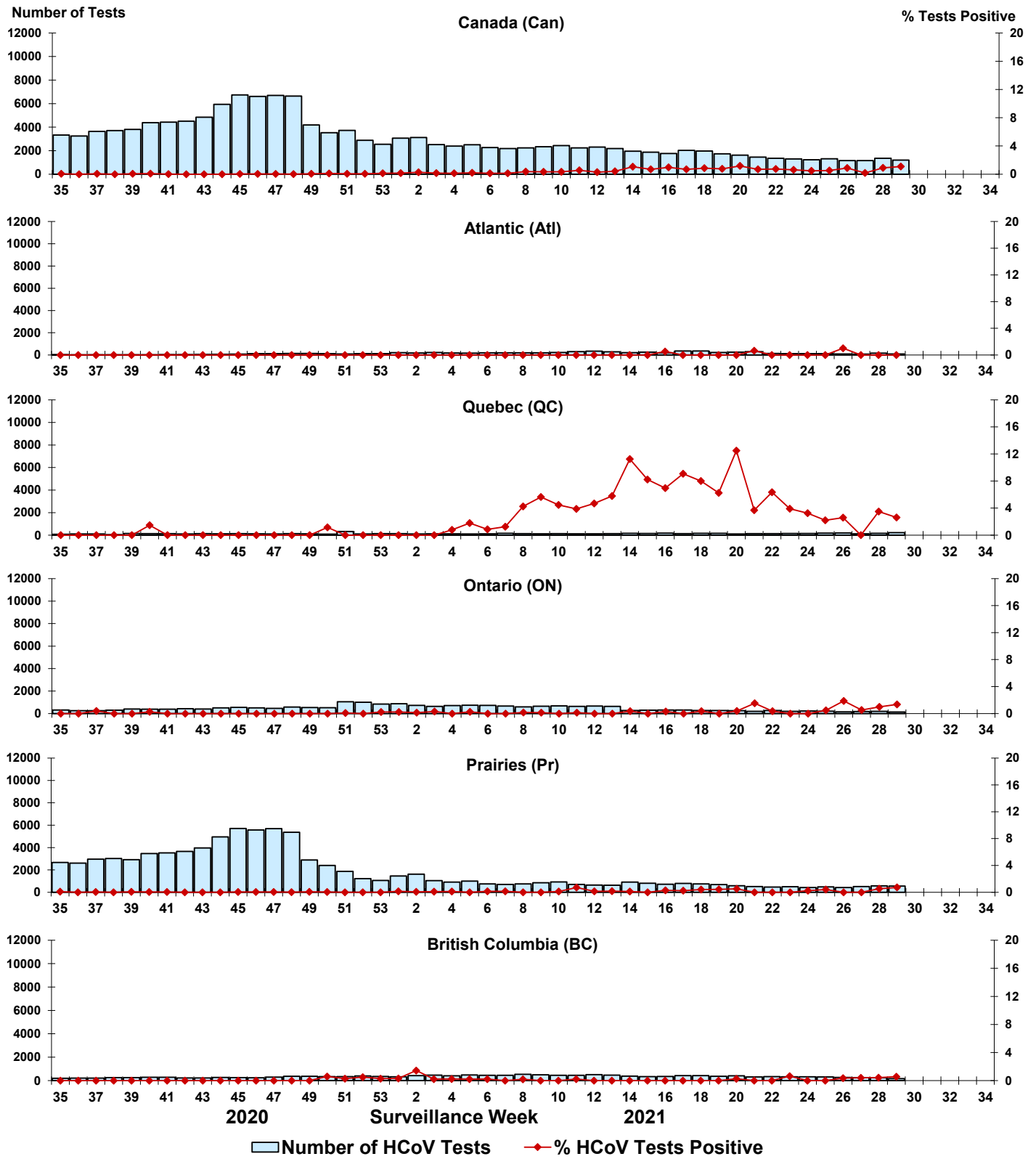


Figure 9: Positive Human coronavirus (HCoV) tests (%) in Canada by region by surveillance week



Abbreviations:

Flu: Influenza

A(H1)pdm09: Influenza A(H1N1)pdm09

A(H3): Influenza A(H3N2)

A(UnS): Influenza A(Unsubtyped)

RSV: Respiratory syncytial virus

HPIV: Human parainfluenza virus

HMPV: Human metapneumovirus

ADV: Adenovirus

EV/RV: Enterovirus/Rhinovirus

HCoV: Human coronavirus

Atl: Atlantic Canada

BC: British Columbia

Can: Canada

CHEO: Children's Hospital of Eastern Ontario

HSC: Health Sciences Centre

N.C.: Data not collected

N.R.: Data not reported for current week

ON: Ontario

PR: Prairies

P.H.O.L.: Public Health Ontario Laboratory

QC: Quebec

Terr: Territories of Canada

UHN: University Health Network