

Respiratory Virus Report, Week 35 - ending January 23, 2021

The Respiratory Virus Detection Surveillance System collects data from select laboratories across Canada on the number of tests performed and the number of tests positive for influenza and other respiratory viruses. Data are reported on a weekly basis year-round to the Centre for Immunization and Respiratory Infectious Diseases (CIRID), Public Health Agency of Canada. These data are also summarized in the weekly FluWatch report.

In this Respiratory Virus Report, the number of detections of coronavirus reflects only seasonal human coronaviruses, not the novel pandemic coronavirus (SARS-CoV2) that causes COVID-19. For information on COVID-19, see the [Coronavirus disease \(COVID-19\): Outbreak](#)

Table 1: Respiratory Virus Detections/Isolations for the week ending January 23, 2021 (Reporting Week 202103)

Reporting Laboratory	Flu Tested	A(H1N1)pdm09 Positive	A(H3) Positive	A(UnS) Positive	Total Flu A Positive	Total Flu B Positive	RSV Tested	RSV Positive	PIV Tested	PIV 1 Positive	PIV 2 Positive	PIV 3 Positive	PIV 4 Positive	Other PIV Positive	Adeno Tested	Adeno Positive	hMPV Tested	hMPV Positive	Entero/Rhino Tested	Entero/Rhino Positive	Coron Tested	Coron Positive
Newfoundland	N.A.	N.A.	N.A.	N.A.	N.A.	N.A.	N.A.	N.A.	N.A.	N.A.	N.A.	N.A.	N.A.	N.A.	N.A.	N.A.	N.A.	N.A.	N.A.	N.A.	N.A.	N.A.
Prince Edward Island	189	0	0	0	0	0	189	1	189	0	0	0	0	0	189	2	189	0	189	13	189	0
Nova Scotia	59	0	0	0	0	0	59	0	14	0	0	0	0	0	14	1	14	0	14	1	14	0
New Brunswick	5523	0	0	0	0	0	606	0	31	0	0	0	0	0	31	0	31	0	31	1	31	0
Atlantic	5771	0	0	0	0	0	854	1	234	0	0	0	0	0	234	3	234	0	234	15	234	0
Région Nord-Est	190	0	0	0	0	0	22	0	0	0	0	0	0	0	0	0	0	0	N.A.	N.A.	0	0
Québec-Chaudière-Appalaches	28	0	0	0	0	0	32	0	16	0	0	0	0	0	16	1	16	0	N.A.	N.A.	16	0
Centre-du-Québec	35	0	0	0	0	0	35	0	8	0	0	0	0	0	8	0	8	0	N.A.	N.A.	8	0
Montréal-Laval	238	0	0	0	0	0	144	0	95	0	0	0	0	0	95	1	94	0	N.A.	N.A.	94	0
Ouest du Québec	24	0	0	0	0	0	21	0	0	0	0	0	0	0	0	0	0	0	N.A.	N.A.	0	0
Montérégie	0	0	0	0	0	0	0	0	0	0	0	0	0	0	0	0	0	0	N.A.	N.A.	0	0
Province of Québec	515	0	0	0	0	0	254	0	119	0	0	0	0	0	119	2	118	0	N.A.	N.A.	118	0
P.H.O.L. - Ottawa	11	0	0	0	0	0	11	0	4	0	0	0	0	0	4	0	4	0	4	0	4	0
CHEO - Ottawa	181	0	0	0	0	0	181	0	18	0	0	0	0	0	18	1	18	0	18	1	18	0
P.H.O.L. - Kingston	10	0	0	0	0	0	10	0	7	0	0	0	0	0	7	0	7	0	7	0	7	0
UHN / Mount Sinai Hospital	475	0	0	0	0	0	465	1	465	0	0	0	1	0	465	0	465	2	465	3	465	1
P.H.O.L. - Toronto	153	0	0	0	0	0	153	0	108	0	0	0	0	0	108	0	108	0	108	1	108	1
Sick Kids Hospital - Toronto	N.A.	N.A.	N.A.	N.A.	N.A.	N.A.	N.A.	N.A.	N.A.	N.A.	N.A.	N.A.	N.A.	N.A.	N.A.	N.A.	N.A.	N.A.	N.A.	N.A.	N.A.	N.A.
Sunnybrook & Women's College HSC	N.A.	N.A.	N.A.	N.A.	N.A.	N.A.	N.A.	N.A.	N.A.	N.A.	N.A.	N.A.	N.A.	N.A.	N.A.	N.A.	N.A.	N.A.	N.A.	N.A.	N.A.	N.A.
P.H.O.L. - Sault Ste. Marie	1	0	0	0	0	0	1	0	0	0	0	0	0	0	0	0	0	0	0	0	0	0
P.H.O.L. - Timmins	39	0	0	0	0	0	39	0	2	0	0	0	0	0	2	0	2	0	2	0	2	0
St. Joseph's - London	0	0	0	0	0	0	0	0	0	0	0	0	0	0	0	0	0	0	0	0	0	0
P.H.O.L. - London	52	0	0	0	0	0	52	0	0	0	0	0	0	0	0	0	0	0	0	0	0	0
P.H.O.L. - Orillia	25	0	0	0	0	0	25	0	0	0	0	0	0	0	0	0	0	0	0	0	0	0
P.H.O.L. - Thunder Bay	3	0	0	0	0	0	3	0	1	0	0	0	0	0	1	0	1	0	1	1	1	0
P.H.O.L. - Sudbury	8	0	0	0	0	0	8	0	2	0	0	0	0	0	2	0	2	0	2	0	2	0
P.H.O.L. - Hamilton	59	0	0	0	0	0	59	0	29	0	0	0	0	0	29	0	29	0	29	0	29	0
P.H.O.L. - Peterborough	11	0	0	0	0	0	11	0	1	0	0	0	0	0	1	0	1	0	1	0	1	0
St. Joseph's - Hamilton	463	0	0	0	0	0	463	0	463	0	0	0	0	0	463	0	463	0	463	7	0	0
Province of Ontario	1491	0	0	0	0	0	1481	1	1100	0	0	0	1	0	1100	1	1100	2	1100	13	637	2
Province of Manitoba	N.A.	N.A.	N.A.	N.A.	N.A.	N.A.	N.A.	N.A.	N.A.	N.A.	N.A.	N.A.	N.A.	N.A.	N.A.	N.A.	N.A.	N.A.	N.A.	N.A.	N.A.	N.A.
Province of Saskatchewan	82	0	0	0	0	0	82	0	37	0	0	0	0	0	37	0	37	0	37	1	37	0
Province of Alberta	2516	0	0	0	0	0	868	0	868	0	0	0	0	0	868	5	868	0	868	38	868	1
Prairies	2598	0	0	0	0	0	950	0	905	0	0	0	0	0	905	5	905	0	905	39	905	1
British Columbia	2599	0	0	0	0	0	2537	0	360	0	0	0	1	0	360	1	360	1	344	12	339	1
Yukon	N.A.	N.A.	N.A.	N.A.	N.A.	N.A.	N.A.	N.A.	N.A.	N.A.	N.A.	N.A.	N.A.	N.A.	N.A.	N.A.	N.A.	N.A.	N.A.	N.A.	N.A.	N.A.
Northwest Territories	16	0	0	0	0	0	15	0	15	0	0	0	0	0	15	0	15	0	15	4	15	0
Nunavut	5	0	0	0	0	0	4	0	4	0	0	0	0	0	4	0	4	0	4	0	0	0
Territories	21	0	0	0	0	0	19	0	19	0	0	0	0	0	19	0	19	0	19	4	15	0
CANADA	12995	0	0	0	0	0	6095	2	2737	0	0	0	2	0	2737	12	2736	3	2602	83	2248	4

The data in the RVDSS report represent surveillance data available at the time of writing. Missing data are denoted by N.A.

Specimens from Yukon (YT), Northwest Territories (NT) and Nunavut (NU) are sent to reference laboratories in other provinces and reported results reflect specimens identified as originating from YT, NT or NU.

Results from British Columbia comprise of specimens from the following sites: BC Children's and Women's Hospital, Children's and Women's Hospital Laboratory, Fraser Health Medical Microbiology Laboratory, Island Health, Providence Health Care, Powell River Hospital, St. Paul's Hospital, Vancouver General Hospital, Victoria General Hospital, BCCDC Public Health Laboratory, Interior Health Authority sites and Northern Health Authority sites.

Delays in the reporting of data may cause data to change retrospectively.

Table 2: Respiratory Virus Detections/Isolations for the period August 23, 2020 - January 23, 2021 (Reporting Weeks 202035-202103)

Reporting Laboratory	Flu Tested	A(H1N1)pdm09 Positive	A(H3) Positive	A(UnS) Positive	Total Flu A Positive	Total Flu B Positive	RSV Tested	RSV Positive	PIV Tested	PIV 1 Positive	PIV 2 Positive	PIV 3 Positive	PIV 4 Positive	Other PIV Positive	Adeno Tested	Adeno Positive	hMPV Tested	hMPV Positive	Entero/Rhino Tested	Entero/Rhino Positive	Coron Tested	Coron Positive
Newfoundland	6491	0	0	0	0	0	6491	8	6491	1	0	1	0	0	6495	29	6370	1	6491	1758	N.A.	N.A.
Prince Edward Island	1318	0	0	0	0	0	1318	3	1314	2	0	0	0	0	1314	21	1314	0	1314	178	1314	0
Nova Scotia	934	0	0	0	0	0	936	0	309	0	0	0	0	0	309	6	309	0	309	51	309	0
New Brunswick	35397	0	0	0	0	1	14509	0	447	0	0	0	0	0	438	6	438	0	438	44	393	0
Atlantic	44140	0	0	0	0	1	23254	11	8561	3	0	1	0	0	8556	62	8431	1	8552	2031	2016	0
Région Nord-Est	1835	0	0	0	0	0	680	1	0	0	0	0	0	0	0	0	0	0	N.A.	N.A.	0	0
Québec-Chaudière-Appalaches	512	0	0	1	1	0	568	0	344	0	0	0	0	0	346	18	341	0	N.A.	N.A.	324	0
Centre-du-Québec	533	0	0	0	0	0	538	1	170	0	0	0	0	0	168	12	170	0	N.A.	N.A.	167	0
Montréal-Laval	3951	0	0	0	0	0	3358	1	2289	0	0	0	0	0	2343	86	2276	0	N.A.	N.A.	2276	3
Ouest du Québec	633	0	0	0	0	0	587	0	0	0	0	0	0	0	0	0	0	0	N.A.	N.A.	0	0
Montérégie	1	0	0	0	0	0	1	0	0	0	0	0	0	0	0	0	0	0	N.A.	N.A.	0	0
Province of Québec	7465	0	0	1	1	0	5732	3	2803	0	0	0	0	0	2857	116	2787	0	N.A.	N.A.	2767	3
P.H.O.L. - Ottawa	347	0	0	0	0	0	347	1	311	0	0	0	0	0	311	0	310	0	311	20	310	0
CHEO - Ottawa	3117	0	0	1	1	1	2714	4	479	0	0	0	0	0	479	8	479	0	479	48	479	0
P.H.O.L. - Kingston	641	0	0	1	1	0	641	0	436	0	0	0	0	0	436	2	432	0	436	101	432	0
UHN / Mount Sinai Hospital	5509	1	0	0	1	1	5430	3	5161	0	2	2	8	0	3535	6	5121	7	4918	72	2957	4
P.H.O.L. - Toronto	3784	0	0	0	0	0	3781	2	3670	0	0	0	0	2	3671	11	3669	0	3670	138	3669	3
Sick Kids Hospital - Toronto	0	0	0	0	0	0	0	0	0	0	0	0	0	0	0	0	0	0	0	0	0	0
Sunnybrook & Women's College HSC	0	0	0	0	0	0	0	0	0	0	0	0	0	0	0	0	0	0	0	0	0	0
P.H.O.L. - Sault Ste. Marie	103	0	0	2	2	0	101	0	82	0	0	0	0	0	82	0	82	0	82	6	82	0
P.H.O.L. - Timmins	502	0	0	0	0	0	502	0	131	0	0	0	0	0	131	0	130	0	131	30	130	0
St. Joseph's - London	218	0	0	0	0	0	218	0	55	0	0	0	0	0	55	0	55	0	91	8	36	0
P.H.O.L. - London	1436	1	0	5	6	2	1426	0	1141	0	0	0	0	2	1141	2	1136	0	1141	124	1136	3
P.H.O.L. - Orillia	254	0	0	1	1	0	252	0	188	0	0	0	0	0	188	1	188	0	188	12	188	0
P.H.O.L. - Thunder Bay	334	0	0	0	0	0	334	0	328	0	0	0	0	0	329	2	328	0	328	129	328	0
P.H.O.L. - Sudbury	320	0	0	0	0	0	318	0	295	0	0	0	0	0	295	1	295	0	295	27	295	0
P.H.O.L. - Hamilton	1189	0	0	0	0	0	1142	1	989	0	0	0	0	0	989	2	989	0	989	93	989	0
P.H.O.L. - Peterborough	331	0	0	1	1	0	285	0	232	0	0	0	0	0	232	0	232	0	232	18	232	0
St. Joseph's - Hamilton	5296	0	0	0	0	0	5296	1	5296	0	0	0	0	0	5296	16	5296	0	5296	363	0	0
Province of Ontario	23381	2	0	11	13	4	22787	12	18794	0	2	2	8	4	17170	51	18742	7	18587	1189	11263	10
Manitoba	26170	0	0	0	0	1	26170	59	1985	0	1	1	0	0	1985	13	1882	1	1985	117	1882	1
Province of Saskatchewan	3136	0	0	0	0	0	3136	2	1249	0	0	1	1	0	1249	9	1249	0	1249	132	1249	2
Province of Alberta	85034	4	0	4	8	0	66338	0	66338	2	17	2	4	0	66338	113	66338	11	66338	5618	66338	19
Prairies	114340	4	0	4	8	1	95644	61	69572	2	18	4	5	0	69572	135	69469	12	69572	5867	69469	22
British Columbia	40292	1	2	4	7	6	40208	5	10044	0	2	0	4	0	10510	51	10464	36	10297	979	6321	14
Yukon	3404	0	0	8	8	7	3357	4	N.A.	N.A.	N.A.	N.A.	N.A.	N.A.	N.A.	N.A.	N.A.	N.A.	N.A.	N.A.	N.A.	N.A.
Northwest Territories	949	0	0	0	0	0	941	0	941	0	0	0	1	0	941	8	941	1	941	294	941	0
Nunavut	1077	0	0	0	0	0	1072	0	1072	3	1	0	0	0	1072	25	1072	5	1072	277	175	0
Territories	5430	0	0	8	8	7	5370	4	2013	3	1	0	1	0	2013	33	2013	6	2013	571	1116	0
CANADA	235048	7	2	28	37	19	192995	96	111787	8	23	7	18	4	110678	448	111906	62	109021	10637	92952	49

The data in the RVDSS report represent surveillance data available at the time of writing. Missing data are denoted by N.A.

Specimens from YT, NT and NU are sent to reference laboratories in other provinces and reported results reflect specimens identified as originating from YT, NT or NU.

Results from British Columbia comprise of specimens from the following sites: BC Children's and Women's Hospital, Children's and Women's Hospital Laboratory, Fraser Health Medical Microbiology Laboratory, Island Health, Providence Health Care, Powell River Hospital, St. Paul's Hospital, Vancouver General Hospital, Victoria General Hospital, BCCDC Public Health Laboratory, Interior Health Authority sites and Northern Health Authority sites.

Delays in the reporting of data may cause data to change retrospectively.

Due to reporting delays, the sum of weekly report totals do not add up to cumulative totals.

Figure 1: Number positive laboratory tests for other respiratory viruses by report week, Canada, 2020-21

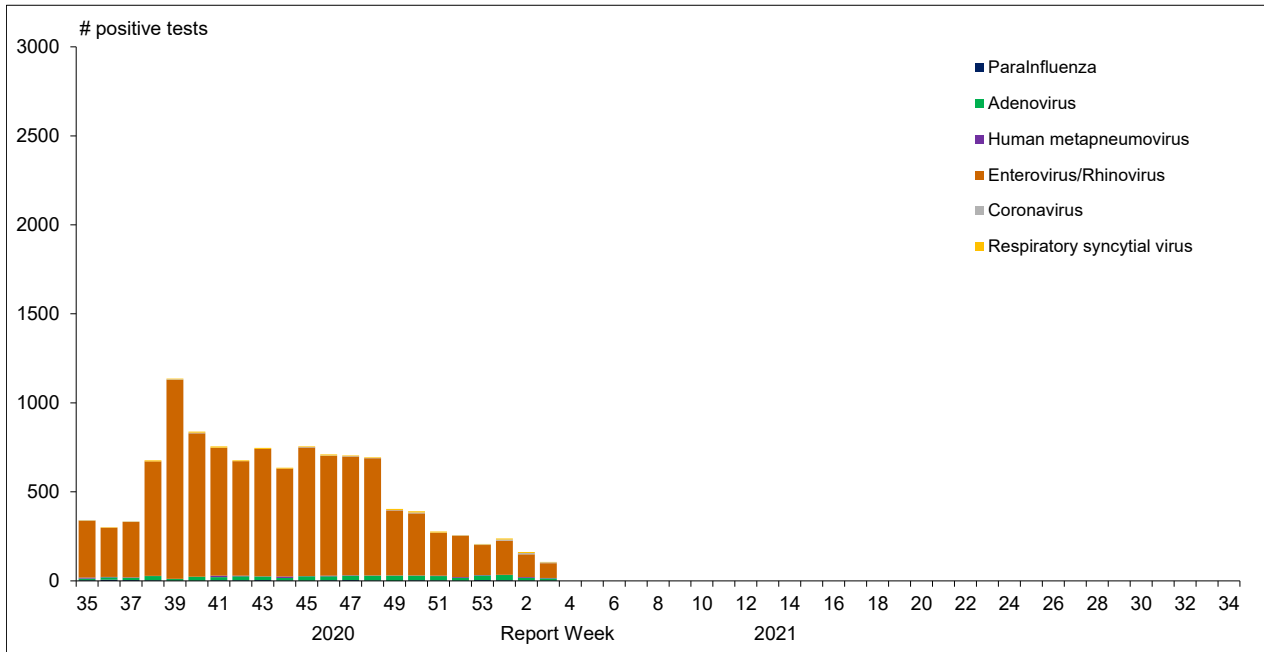


Figure 2 : Positive Influenza Tests (%) in Canada by Region by Week of Report

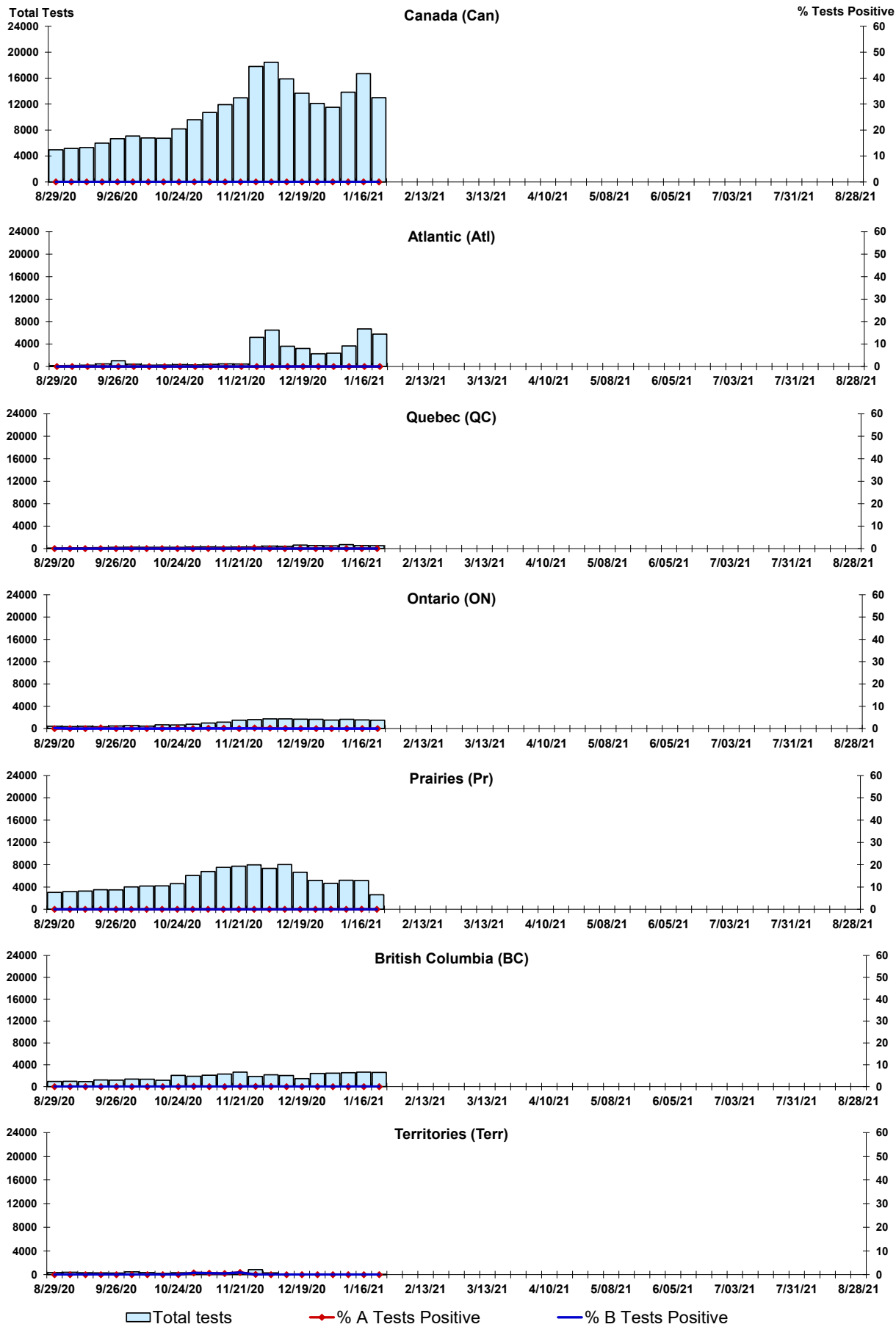


Figure 3: Positive Respiratory syncytial virus (RSV) Tests (%) in Canada by Region by Week of Report

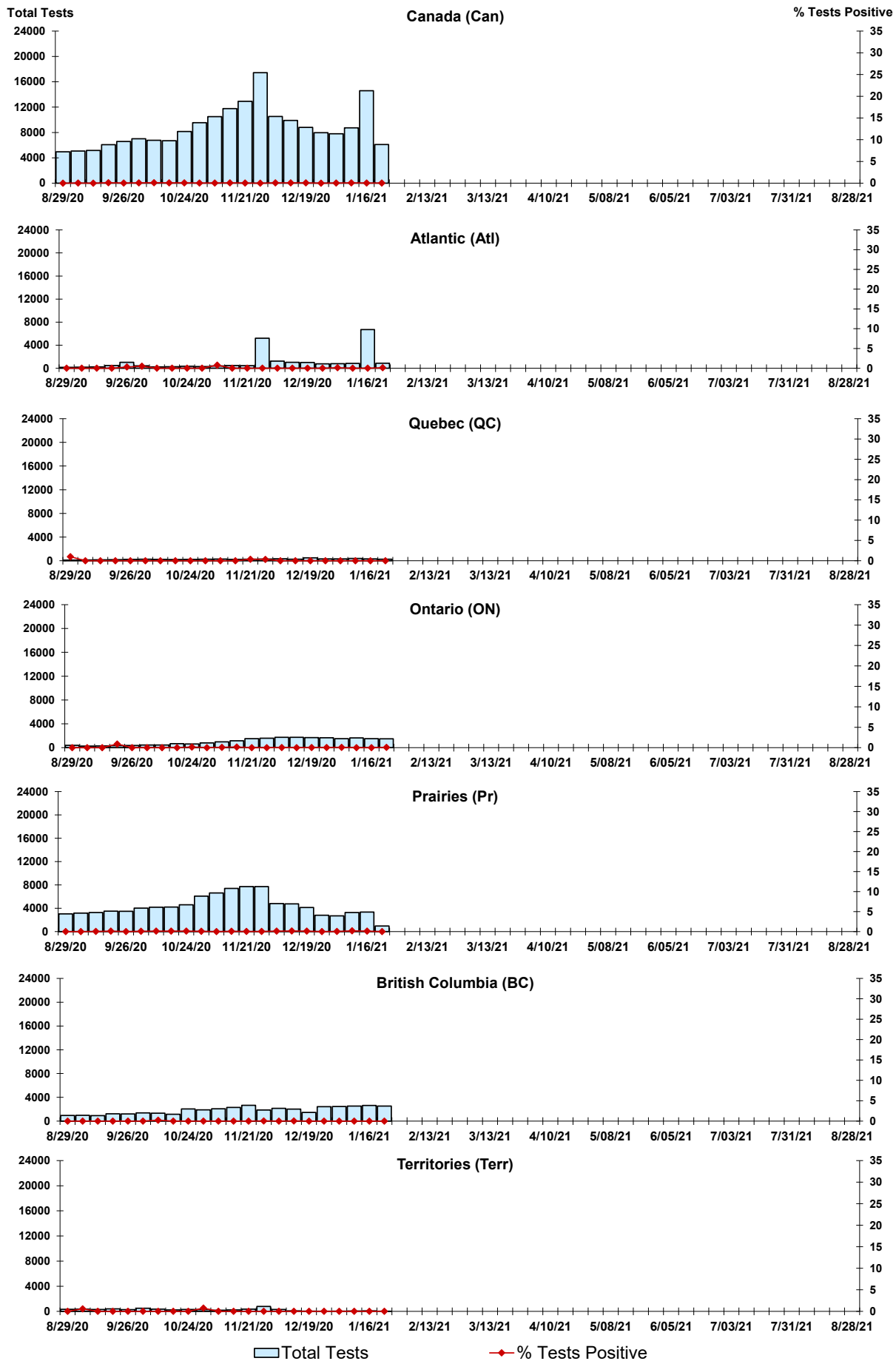


Figure 4: Positive Parainfluenza (PIV) Tests (%) in Canada by Region by Week of Report

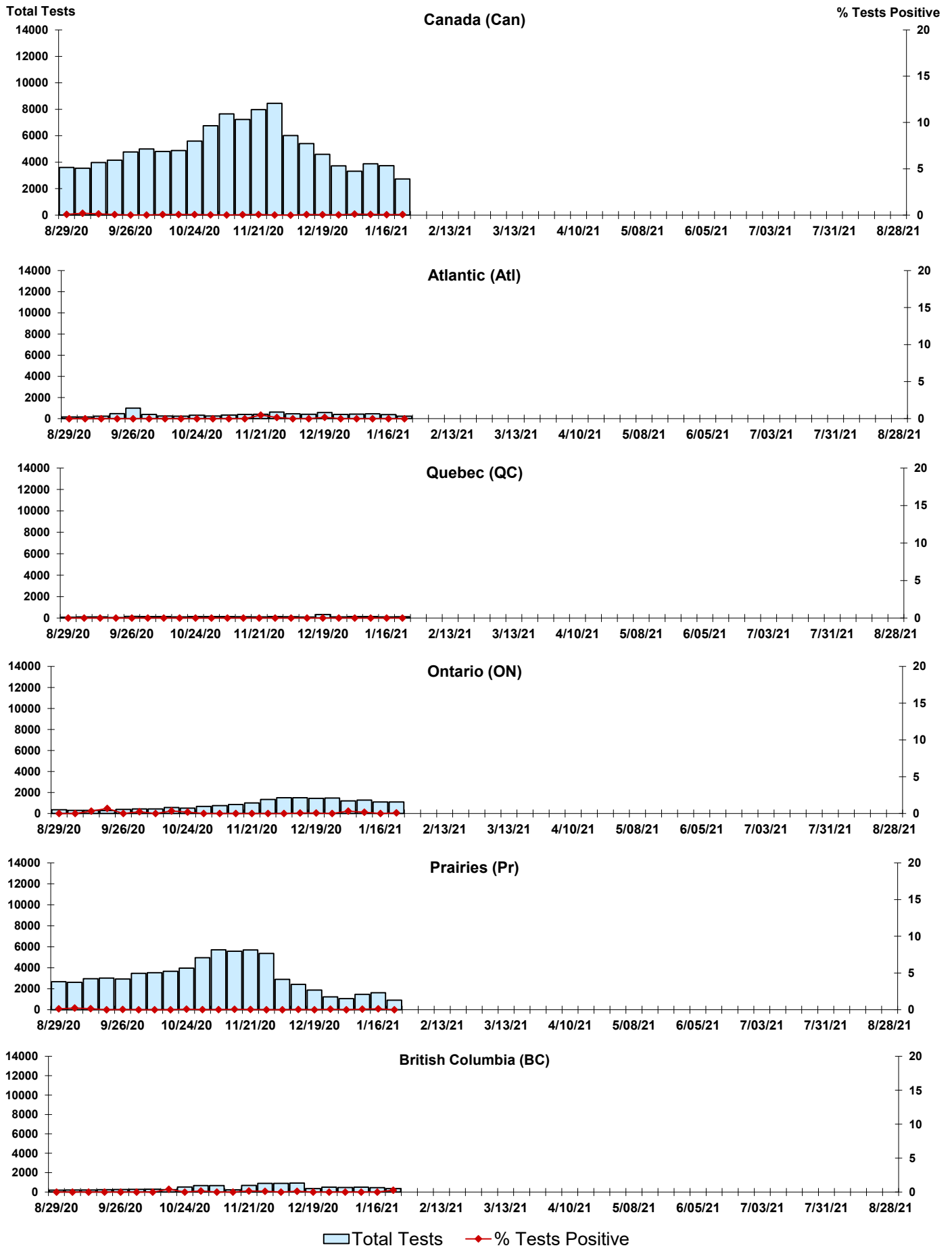


Figure 5: Positive Adenovirus (adeno) Tests (%) in Canada by Region by Week of Report

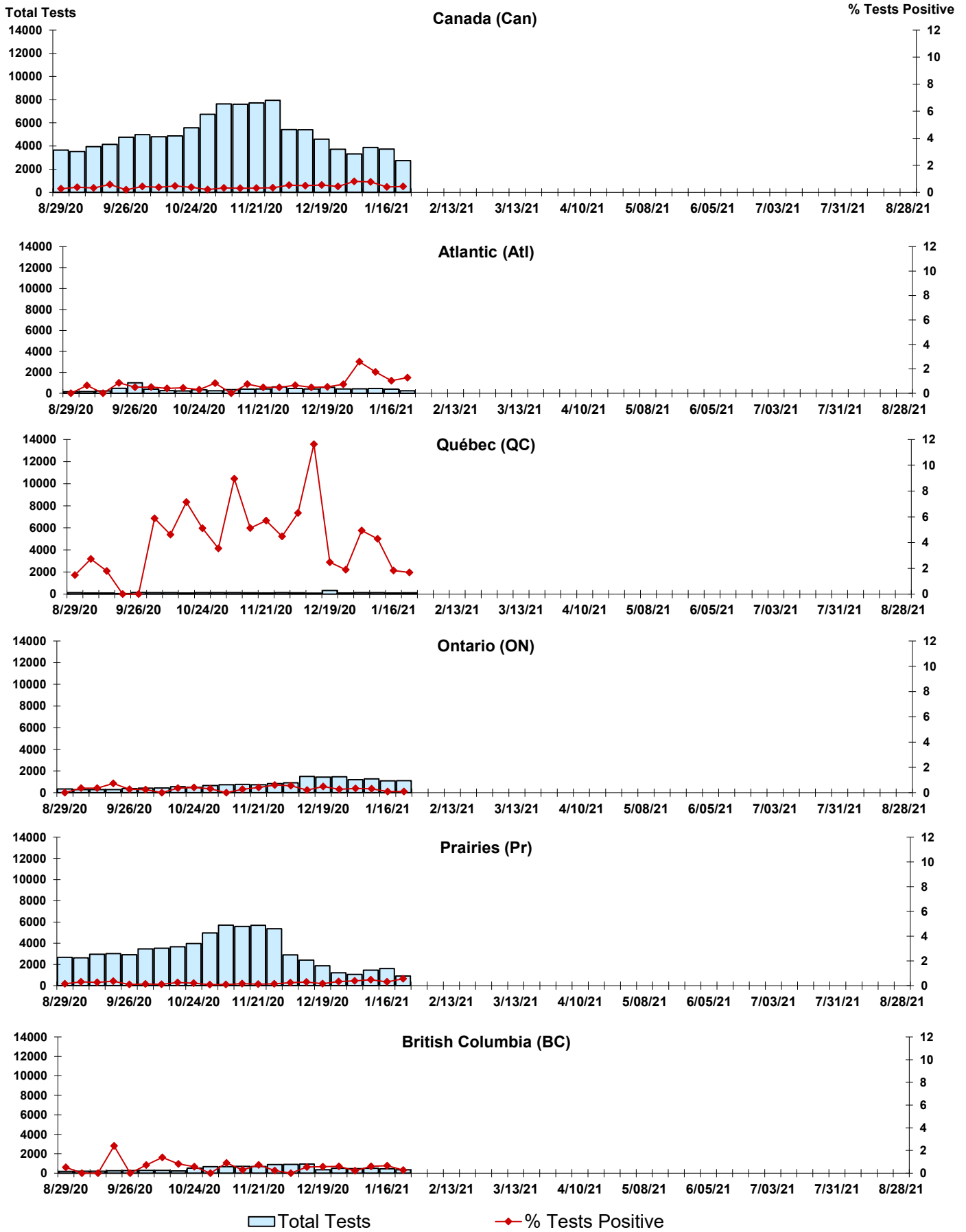


Figure 6: Positive human metapneumovirus (hMPV) Tests (%) in Canada by Region by Week of Report

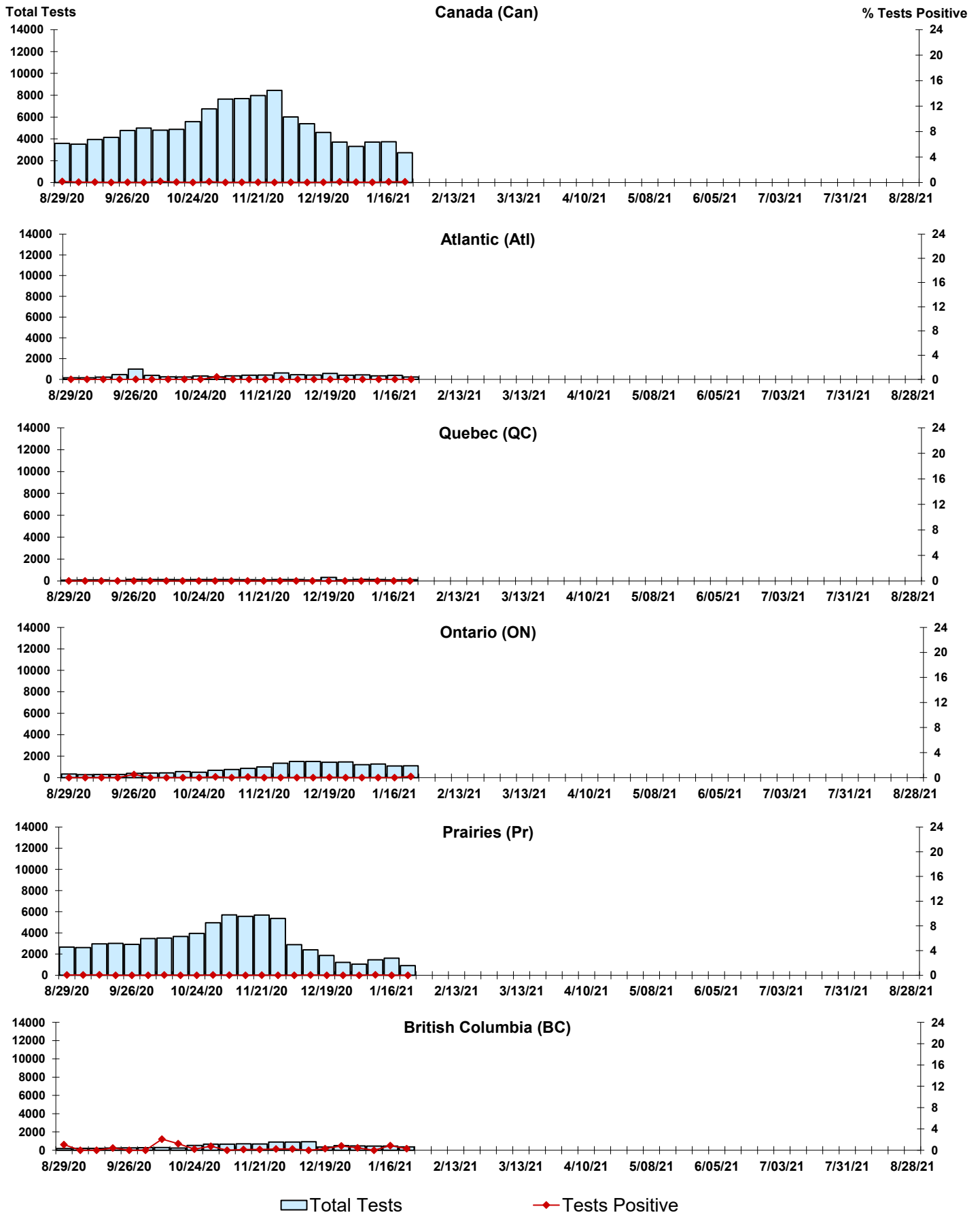


Figure 7: Positive Enterovirus/Rhinovirus (entero/rhino) Tests (%) in Canada by Region by Week of Report

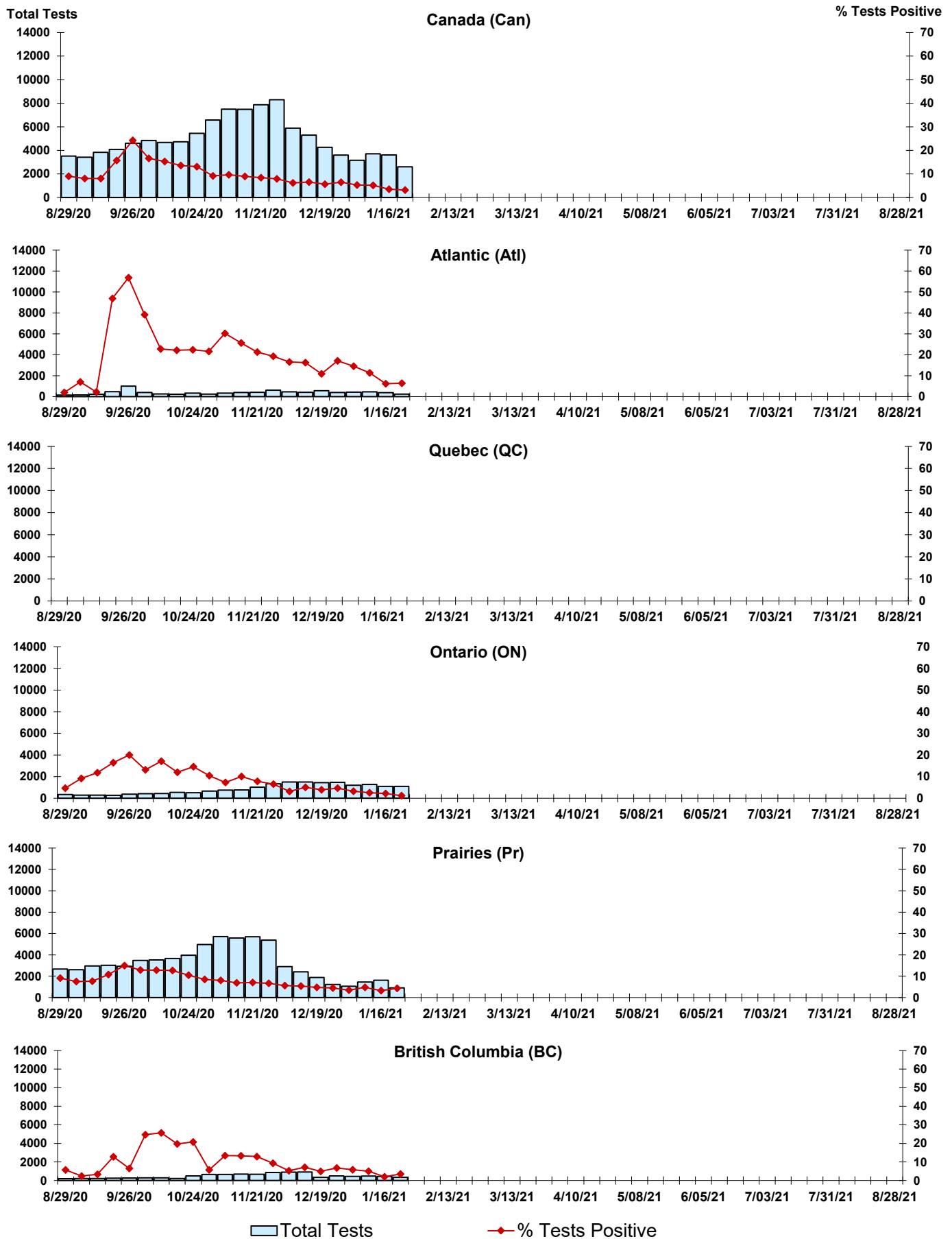
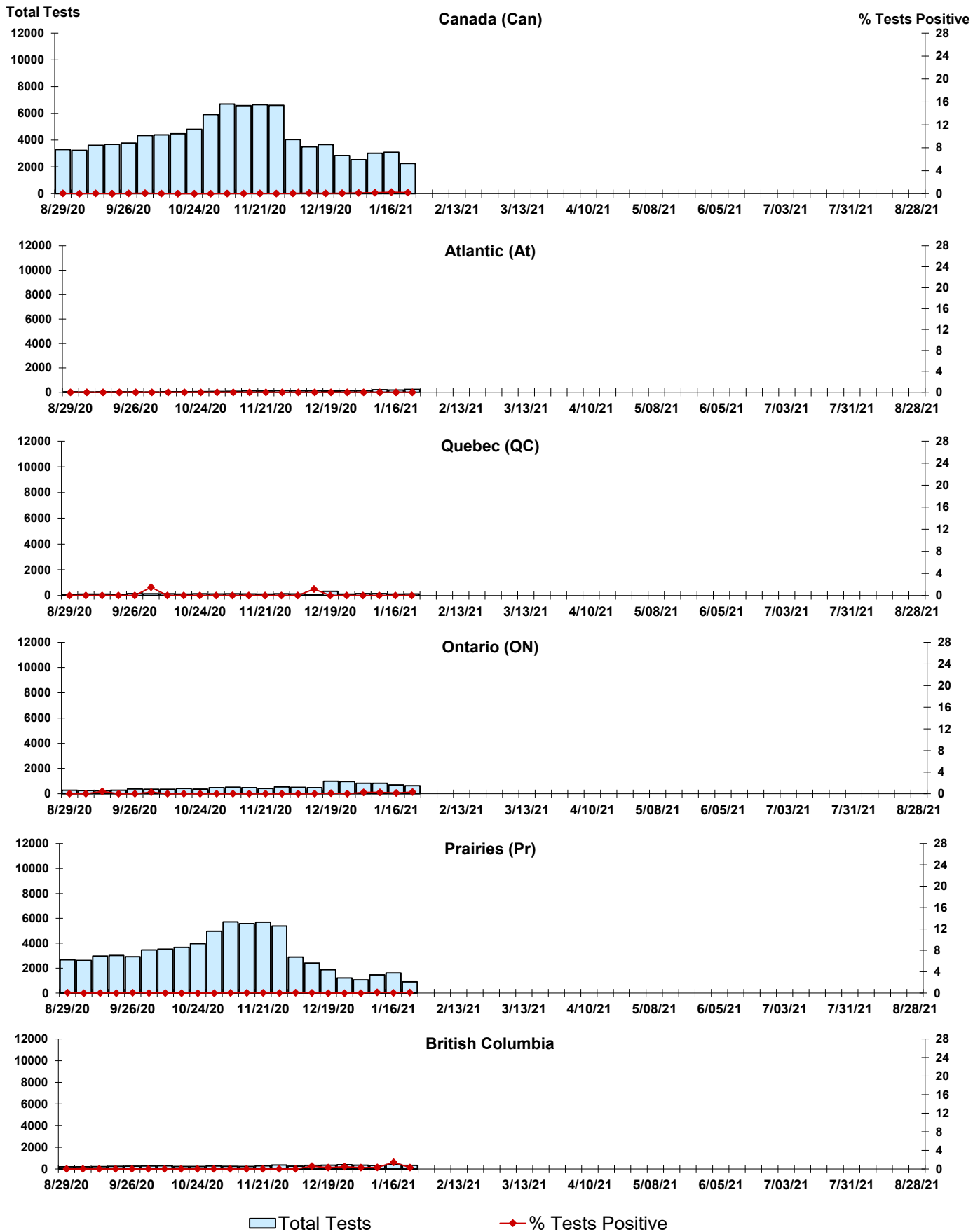


Figure 8: Positive Coronavirus (coron) Tests (%) in Canada by Region by Week of Report



Abbreviations:

A(H1N1)pdm09: Influenza A(H1N1)pdm09

A(H3): Influenza A(H3N2)

A (UnS): Influenza A (Unsubtyped)

Adeno: Adenovirus

CHEO: Children's Hospital of Eastern Ontario

Coron: Coronavirus

Entero: Enterovirus

hMPV: human metapneumovirus

HSC: Health Sciences Centre

N.A.: Not Applicable

P.H.L.: Public Health Laboratory

P.H.O.L.: Public Health Ontario Laboratory

PIV: Parainfluenza

Rhino: Rhinovirus

RSV: Respiratory syncytial virus

UHN: University Health Network

Notes:

The data in the RVDSS report represent surveillance data available at the time of writing. Missing data are denoted by N.A.

Specimens from Yukon (YT), Northwest Territories (NT) and Nunavut (NU) are sent to reference laboratories in other provinces. Results reported for the Territories reflect the number of specimens that are identified as originating from YT, NT or NU.

Delays in the reporting of data may cause data to change retrospectively.

Due to reporting delays, the sum of weekly report totals do not add up to cumulative totals.