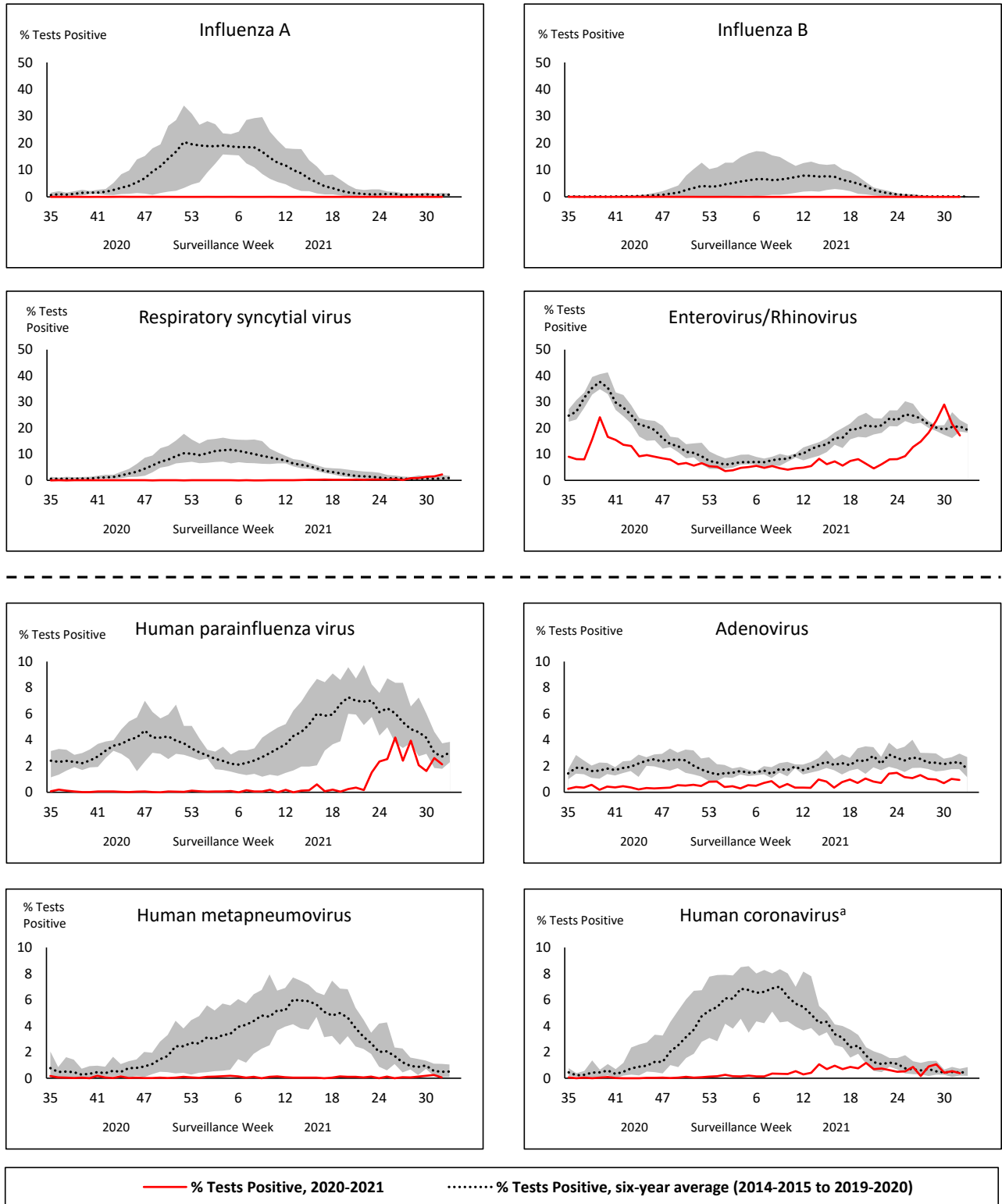


Respiratory Virus Report, Week 32 - ending August 14, 2021

The Respiratory Virus Detection Surveillance System collects data from select laboratories across Canada on the number of tests performed and the number of tests positive for influenza and other respiratory viruses. Data are reported on a weekly basis year-round to the Centre for Immunization and Respiratory Infectious Diseases (CIRID), Public Health Agency of Canada. These data are also summarized in the weekly FluWatch report.

In this Respiratory Virus Report, the number of detections of coronavirus reflects only seasonal human coronaviruses, not the novel pandemic coronavirus (SARS-CoV-2) that causes COVID-19. For information on COVID-19, see the [Coronavirus disease \(COVID-19\): Outbreak update](#).

Figure 1: Positive respiratory virus tests (%) reported by participating laboratories in Canada by surveillance week compared to average and range from 2014-2015 to 2019-2020 season



Shaded area represents the maximum and minimum % of respiratory virus tests positive reported by week from seasons 2014-2015 to 2019-2020

Note: Data from week 11 of the 2019-2020 season onwards is excluded from the historical comparison due to the COVID-19 pandemic

Note: % Tests Positive scale changes across the dashed line

^a Human coronavirus excludes human coronaviruses SARS-CoV, MERS-CoV and SARS-CoV-2; Includes seasonal human coronaviruses HCoV-229E, HCoV-OC43, HCoV-NL63, HCoV-HKU1.

Table 1: Respiratory virus detections for the week ending August 14, 2021 (surveillance week 2021-32)

Reporting Laboratory	Flu Tested	A(H1)pdm09 Positive	A(H3) Positive	A(UnS) Positive	Total Flu A Positive	Total Flu B Positive	RSV Tested	RSV Positive	HPIV Tested	HPIV 1 Positive	HPIV 2 Positive	HPIV 3 Positive	HPIV 4 Positive	Other HPIV Positive	ADV Tested	ADV Positive	HMPV Tested	HMPV Positive	EV/RV Tested	EV/RV Positive	HCoV Tested	HCoV Positive
Newfoundland	366	0	0	0	0	0	366	3	366	0	0	1	0	1	241	0	366	0	241	22	N.C.	N.C.
Prince Edward Island	45	0	0	0	0	0	45	1	45	0	0	0	0	0	45	1	45	0	45	16	45	0
Nova Scotia	33	0	0	0	0	0	33	0	30	0	0	0	0	0	30	0	30	0	30	1	30	0
New Brunswick	120	0	0	0	0	0	111	0	92	0	0	1	0	0	92	0	92	0	92	3	92	1
Atlantic	564	0	0	0	0	0	555	4	533	0	0	2	0	1	408	1	533	0	408	42	167	1
Région Nord-Est	397	0	0	0	0	0	32	0	0	0	0	0	0	0	0	0	0	0	N.C.	N.C.	0	0
Québec-Chaudière-Appalaches	24	0	0	0	0	0	24	0	21	0	0	2	0	0	21	1	21	0	N.C.	N.C.	21	0
Centre-du-Québec	18	0	0	0	0	0	18	1	23	0	0	1	0	0	23	1	23	0	N.C.	N.C.	23	0
Montréal-Laval	411	0	0	0	0	0	411	75	129	0	0	6	0	0	129	7	129	1	N.C.	N.C.	129	2
Ouest du Québec	13	0	0	0	0	0	13	1	0	0	0	0	0	0	0	0	0	0	N.C.	N.C.	0	0
Montérégie	7	0	0	0	0	0	7	3	0	0	0	0	0	0	0	0	0	0	N.C.	N.C.	0	0
Province of Québec	870	0	0	0	0	0	505	80	173	0	0	9	0	0	173	9	173	1	N.C.	N.C.	173	2
P.H.O.L. - Ottawa	16	0	0	0	0	0	16	0	16	0	0	0	0	0	16	0	16	0	16	5	16	0
CHEO - Ottawa	60	0	0	0	0	0	60	1	27	0	0	1	0	0	27	1	27	0	27	8	27	0
P.H.O.L. - Kingston	25	0	0	0	0	0	25	0	25	0	0	0	0	7	25	0	24	0	25	13	24	0
UHN / Mount Sinai Hospital	348	0	0	0	0	0	348	0	22	0	0	0	0	0	22	0	22	0	22	0	22	0
P.H.O.L. - Toronto	181	0	0	0	0	0	181	0	181	0	0	0	0	2	181	1	179	0	181	39	179	0
Sick Kids Hospital - Toronto	N.R.	N.R.	N.R.	N.R.	N.R.	N.R.	N.R.	N.R.	N.R.	N.R.	N.R.	N.R.	N.R.	N.R.	N.R.	N.R.	N.R.	N.R.	N.R.	N.R.	N.R.	N.R.
Sunnybrook & Women's College HSC	N.R.	N.R.	N.R.	N.R.	N.R.	N.R.	N.R.	N.R.	N.R.	N.R.	N.R.	N.R.	N.R.	N.R.	N.R.	N.R.	N.R.	N.R.	N.R.	N.R.	N.R.	N.R.
P.H.O.L. - Sault Ste. Marie	10	0	0	0	0	0	10	0	10	0	0	0	0	0	10	0	10	0	10	1	10	0
P.H.O.L. - Timmins	3	0	0	0	0	0	3	0	3	0	0	0	0	0	3	0	3	0	3	0	3	0
St. Joseph's - London	N.R.	N.R.	N.R.	N.R.	N.R.	N.R.	N.R.	N.R.	N.R.	N.R.	N.R.	N.R.	N.R.	N.R.	N.R.	N.R.	N.R.	N.R.	N.R.	N.R.	N.R.	N.R.
P.H.O.L. - London	30	0	0	0	0	0	30	0	30	0	0	0	0	0	30	0	30	0	30	2	30	0
P.H.O.L. - Orillia	3	0	0	0	0	0	3	0	3	0	0	0	0	0	3	0	3	0	3	1	3	0
P.H.O.L. - Thunder Bay	5	0	0	0	0	0	5	0	5	0	0	0	0	0	5	0	5	0	5	4	5	0
P.H.O.L. - Sudbury	5	0	0	0	0	0	5	0	5	0	0	0	0	0	5	0	5	0	5	0	5	0
P.H.O.L. - Hamilton	23	0	0	0	0	0	23	0	23	0	0	0	0	2	23	2	23	0	23	11	23	0
P.H.O.L. - Peterborough	10	0	0	0	0	0	10	1	10	0	0	0	0	0	10	0	10	0	10	0	10	0
St. Joseph's - Hamilton	218	0	0	0	0	0	218	0	218	0	0	9	0	0	218	0	218	0	218	37	0	0
Province of Ontario	937	0	0	0	0	0	937	2	578	0	0	10	0	11	578	4	575	0	578	121	357	0
Province of Manitoba	1086	0	0	0	0	0	1086	1	29	0	0	0	0	0	29	0	83	0	29	3	83	0
Province of Saskatchewan	70	0	0	0	0	0	70	0	76	0	0	0	1	0	76	0	76	0	76	20	76	1
Province of Alberta	N.R.	N.R.	N.R.	N.R.	N.R.	N.R.	N.R.	N.R.	N.R.	N.R.	N.R.	N.R.	N.R.	N.R.	N.R.	N.R.	N.R.	N.R.	N.R.	N.R.	N.R.	N.R.
Prairies	1156	0	0	0	0	0	1156	1	105	0	0	0	1	0	105	0	159	0	105	23	159	1
British Columbia	606	0	0	0	0	0	606	0	205	0	0	0	0	0	205	0	205	0	202	36	202	0
Yukon	124	0	0	0	0	0	124	1	N.C.	N.C.	N.C.	N.C.	N.C.	N.C.	N.C.	N.C.	N.C.	N.C.	N.C.	N.C.	N.C.	N.C.
Northwest Territories	N.R.	N.R.	N.R.	N.R.	N.R.	N.R.	N.R.	N.R.	N.R.	N.R.	N.R.	N.R.	N.R.	N.R.	N.R.	N.R.	N.R.	N.R.	N.R.	N.R.	N.R.	N.R.
Nunavut	N.R.	N.R.	N.R.	N.R.	N.R.	N.R.	N.R.	N.R.	N.R.	N.R.	N.R.	N.R.	N.R.	N.R.	N.R.	N.R.	N.R.	N.R.	N.R.	N.R.	N.R.	N.R.
Territories	124	0	0	0	0	0	124	1	0	0	0	0	0	0	0	0	0	0	0	0	0	0
CANADA	4257	0	0	0	0	0	3883	88	1594	0	0	21	1	12	1469	14	1645	1	1293	222	1058	4

The data in the RVDSS report represent surveillance data available at the time of writing. Data missing from the current week are denoted by N.R. Data not collected by reporting lab denoted by N.C.

Specimens from Yukon (YT), Northwest Territories (NT) and Nunavut (NU) are sent to reference laboratories in other provinces and reported results reflect specimens identified as originating from YT, NT or NU.

Results from British Columbia comprise of specimens from the following sites: BC Children's and Women's Hospital, Children's and Women's Hospital Laboratory, Fraser Health Medical Microbiology Laboratory, Island Health, Providence Health Care, Powell River Hospital, St. Paul's Hospital, Vancouver General Hospital, Victoria General Hospital, BCCDC Public Health Laboratory, Interior Health Authority sites and Northern Health Authority sites.

Delays in the reporting of data may cause data to change retrospectively.

Influenza co-detections may cause the sum of A(H1)pdm09, A(H3), and A(UnS) positive results to exceed the sum of Total Flu A Positive results.

Table 2: Cumulative respiratory virus detections from August 23, 2020 to August 14, 2021 (surveillance week 2020-35 to 2021-32)

Reporting Laboratory	Flu Tested	A(H1)pdm09 Positive	A(H3) Positive	A(UnS) Positive	Total Flu A Positive	Total Flu B Positive	RSV Tested	RSV Positive	HPIV Tested	HPIV 1 Positive	HPIV 2 Positive	HPIV 3 Positive	HPIV 4 Positive	Other HPIV Positive	ADV Tested	ADV Positive	HMPV Tested	HMPV Positive	EV/RV Tested	EV/RV Positive	HCoV Tested	HCoV Positive
Newfoundland	14753	0	0	0	0	0	14752	14	14752	1	0	6	0	1	14640	57	14165	2	13970	2245	N.C.	N.C.
Prince Edward Island	4343	0	0	0	0	0	4343	5	4339	3	0	0	1	0	4339	47	4339	0	4338	534	4338	2
Nova Scotia	8804	0	0	0	0	0	8807	0	1597	0	10	0	1	0	1597	17	1597	1	1597	92	1625	0
New Brunswick	55104	0	0	0	0	1	20969	0	1962	0	0	1	0	0	1953	12	1953	0	1953	68	1908	3
Atlantic	83004	0	0	0	0	1	48871	19	22650	4	10	7	2	1	22529	133	22054	3	21858	2939	7871	5
Région Nord-Est	11463	0	0	0	0	0	1324	1	8	0	0	0	0	0	8	1	8	0	N.C.	N.C.	8	0
Québec-Chaudière-Appalaches	1002	0	0	1	1	0	1125	7	970	0	0	56	1	0	972	54	967	0	N.C.	N.C.	950	31
Centre-du-Québec	1005	0	0	0	0	0	1013	3	523	0	0	21	0	0	521	29	523	0	N.C.	N.C.	520	17
Montréal-Laval	13700	0	0	0	0	0	12743	474	5675	88	0	177	0	0	5729	212	5659	9	N.C.	N.C.	5659	148
Ouest du Québec	2676	0	0	0	0	0	2567	2	0	0	0	0	0	0	0	0	0	0	N.C.	N.C.	0	0
Montérégie	1288	0	0	0	0	0	1288	7	0	0	0	0	0	0	0	0	0	0	N.C.	N.C.	0	0
Province of Québec	31134	0	0	1	1	0	20060	494	7176	88	0	254	1	0	7230	296	7157	9	N.C.	N.C.	7137	196
P.H.O.L. - Ottawa	713	0	0	0	0	0	713	1	602	0	0	0	0	0	602	0	601	0	602	35	601	2
CHEO - Ottawa	5668	0	0	1	1	1	5265	6	1214	0	0	7	0	0	1089	18	1089	1	1089	127	1089	7
P.H.O.L. - Kingston	975	0	0	1	1	0	975	0	649	0	0	0	0	8	649	5	640	0	649	140	640	0
UHN / Mount Sinai Hospital	17972	2	0	2	4	1	17903	7	10802	3	2	5	8	0	9176	11	10762	10	10559	105	8598	7
P.H.O.L. - Toronto	7646	0	0	0	0	0	7643	3	6611	0	0	0	0	8	6613	25	6607	3	6611	287	6607	6
Sick Kids Hospital - Toronto	1380	0	0	0	0	0	0	0	1380	0	0	1	0	0	1380	21	1380	0	1380	134	1380	1
Sunnybrook & Women's College HSC	0	0	0	0	0	0	0	0	0	0	0	0	0	0	0	0	0	0	0	0	0	0
P.H.O.L. - Sault Ste. Marie	195	0	0	2	2	0	193	0	119	0	0	0	0	0	119	0	119	0	119	7	119	0
P.H.O.L. - Timmins	638	0	0	0	0	0	638	0	178	0	0	0	0	0	178	1	177	0	178	32	177	0
St. Joseph's - London	218	0	0	0	0	0	218	0	55	0	0	0	0	0	55	0	55	0	91	8	36	0
P.H.O.L. - London	2084	1	0	5	6	2	2074	0	1412	0	0	0	0	2	1412	2	1406	0	1412	132	1406	3
P.H.O.L. - Orillia	443	0	0	1	1	0	441	0	223	0	0	0	0	0	223	2	223	0	223	23	223	0
P.H.O.L. - Thunder Bay	435	0	0	0	0	0	435	0	415	0	0	0	0	0	416	3	415	0	415	146	415	0
P.H.O.L. - Sudbury	557	0	0	0	0	0	555	1	376	0	0	0	0	4	376	4	376	0	376	32	376	7
P.H.O.L. - Hamilton	1630	0	1	0	1	0	1574	1	1317	0	0	0	0	2	1317	4	1317	0	1317	118	1317	0
P.H.O.L. - Peterborough	604	0	0	1	1	0	558	1	445	0	0	0	0	0	445	0	444	0	445	30	444	0
St. Joseph's - Hamilton	11371	0	1	0	1	0	11371	4	11371	0	0	29	0	0	11371	24	11371	0	11371	603	0	0
Province of Ontario	52529	3	2	13	18	4	50556	24	37169	3	2	42	8	24	35421	120	36982	14	36837	1959	23428	33
Manitoba	69812	0	1	3	4	2	69802	70	2980	0	1	3	0	0	2980	20	4329	1	2980	195	4329	8
Province of Saskatchewan	172306	0	0	1	1	0	27439	4	2354	0	0	1	2	0	2354	18	2354	4	2354	270	2354	16
Province of Alberta	139079	0	0	1	1	0	82087	0	82087	4	20	17	12	0	82087	176	82087	11	82087	7833	82087	39
Prairies	381197	0	1	5	6	2	179328	74	87421	4	21	21	14	0	87421	214	88770	16	87421	8298	88770	63
British Columbia	94194	3	8	1	10	8	93693	7	21439	2	5	1	15	6	21985	140	21610	74	21387	1805	17221	28
Yukon	7962	0	0	8	8	7	7871	5	N.C.	N.C.	N.C.	N.C.	N.C.	N.C.	N.C.	N.C.	N.C.	N.C.	N.C.	N.C.	N.C.	N.C.
Northwest Territories	1232	0	0	0	0	0	1172	0	1172	0	0	0	1	0	1172	12	1172	1	1172	330	1172	1
Nunavut	1128	0	0	0	0	0	1104	0	1104	3	1	0	0	0	1104	25	1104	5	1104	283	192	0
Territories	10322	0	0	8	8	7	10147	5	2276	3	1	0	1	0	2276	37	2276	6	2276	613	1364	1
CANADA	652380	6	11	28	43	22	402655	623	178131	104	39	325	41	31	176862	940	178849	122	169779	15614	145791	326

The data in the RVDSS report represent surveillance data available at the time of writing. Data not collected by reporting lab denoted by N.C.

Specimens from Yukon (YT), Northwest Territories (NT) and Nunavut (NU) are sent to reference laboratories in other provinces and reported results reflect specimens identified as originating from YT, NT or NU.

Results from British Columbia comprise of specimens from the following sites: BC Children's and Women's Hospital, Children's and Women's Hospital Laboratory, Fraser Health Medical Microbiology Laboratory, Island Health, Providence Health Care, Powell River Hospital, St. Paul's Hospital, Vancouver General Hospital, Victoria General Hospital, BCCDC Public Health Laboratory, Interior Health Authority sites and Northern Health Authority sites.

Delays in the reporting of data may cause data to change retrospectively. Due to these delays, the sum of weekly report totals do not add up to cumulative totals.

Influenza co-detections may cause the sum of A(H1N1)pdm09, A(H3), and A(UnS) positive results to exceed the sum of Total Flu A Positive results.

Figure 2: Number of positive respiratory virus tests reported by participating laboratories in Canada by surveillance week

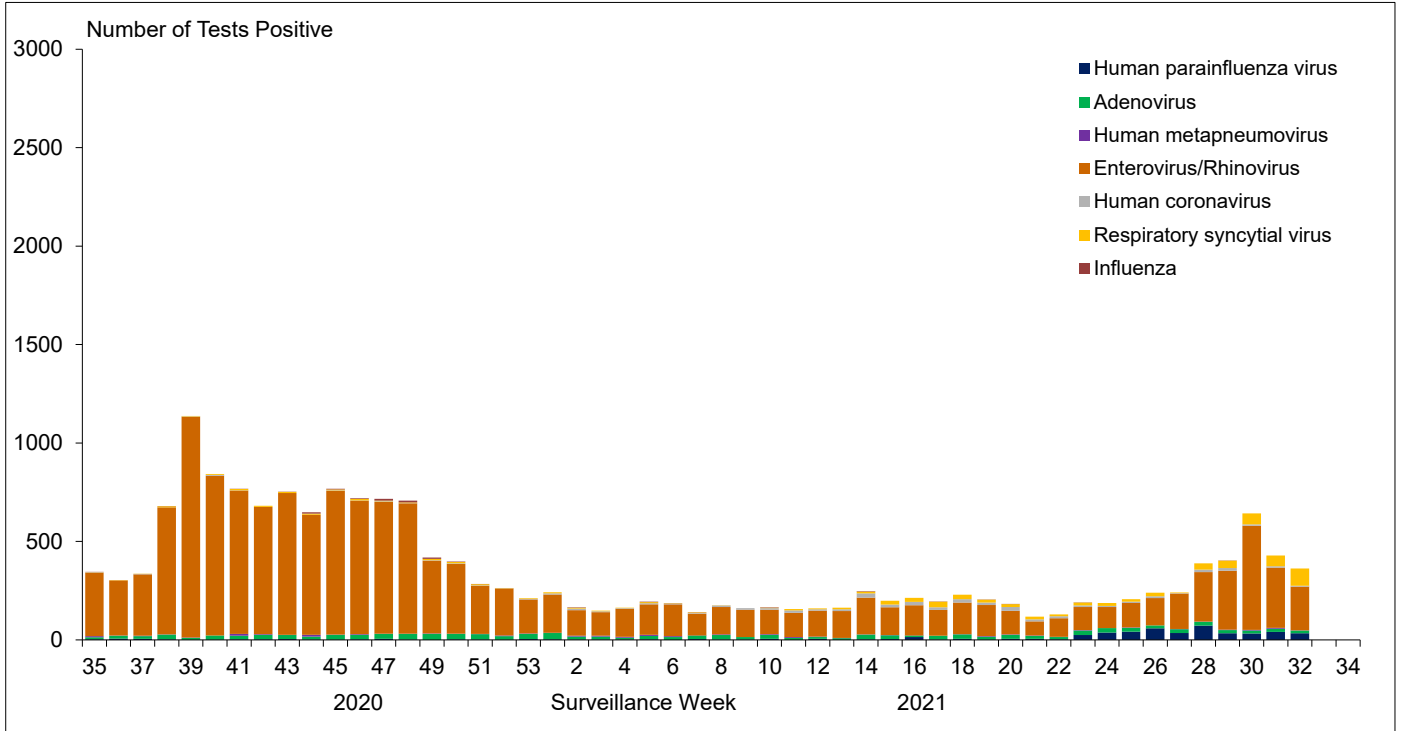


Figure 3: Positive Influenza (Flu) tests (%) in Canada by region by surveillance week

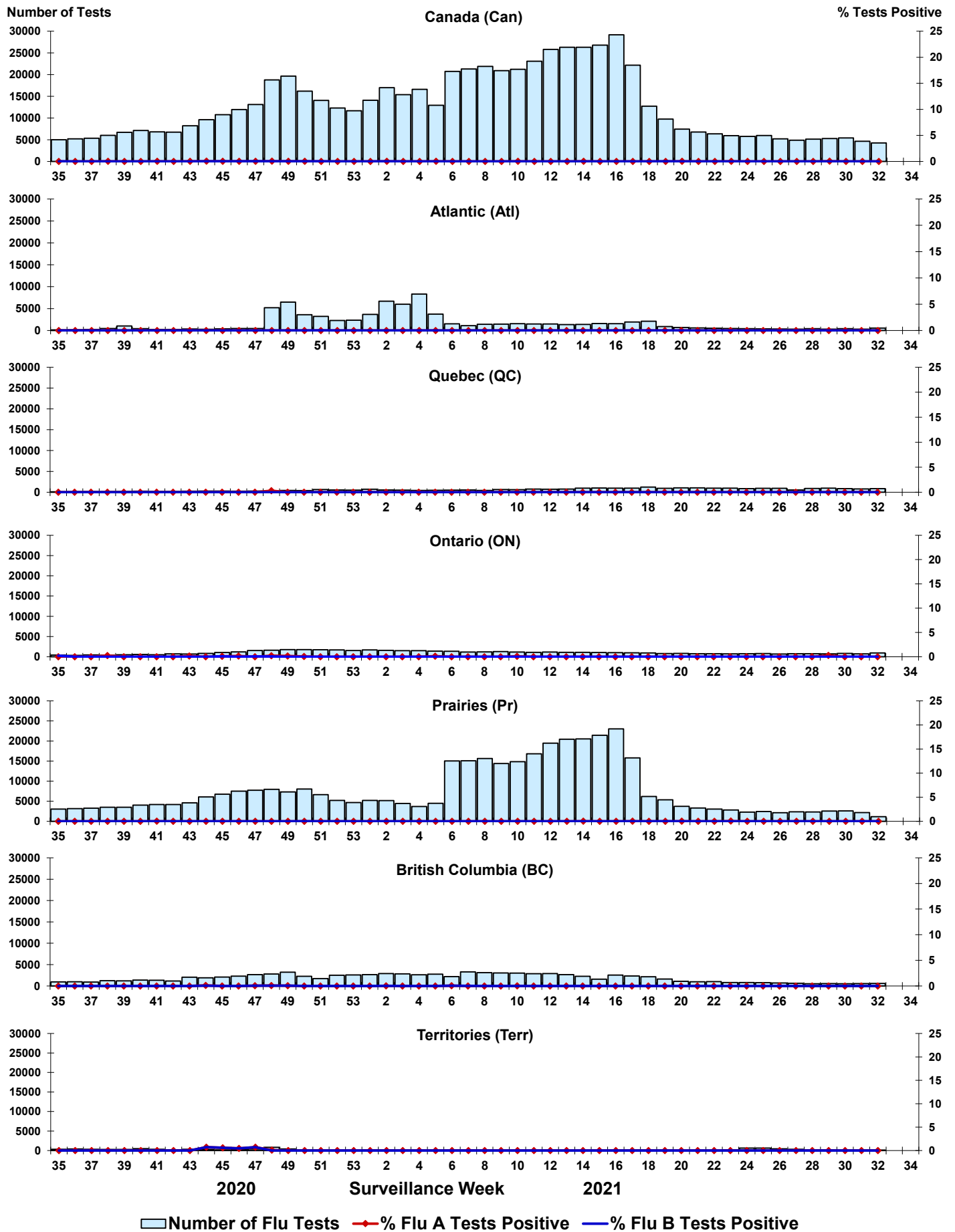


Figure 4: Positive Respiratory syncytial virus (RSV) tests (%) in Canada by region by surveillance week

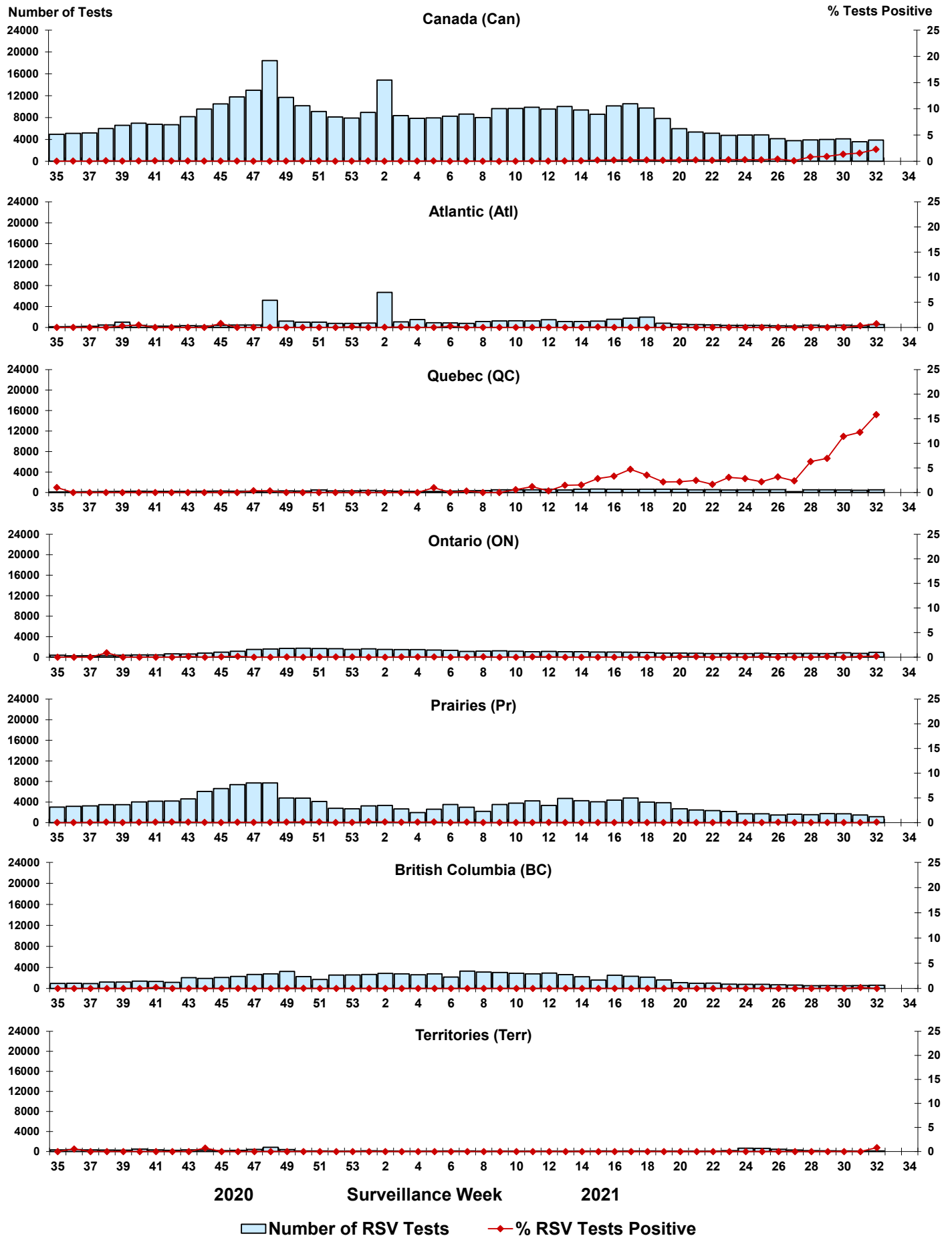


Figure 5: Positive Human parainfluenza virus (HPIV) tests (%) in Canada by region by surveillance week

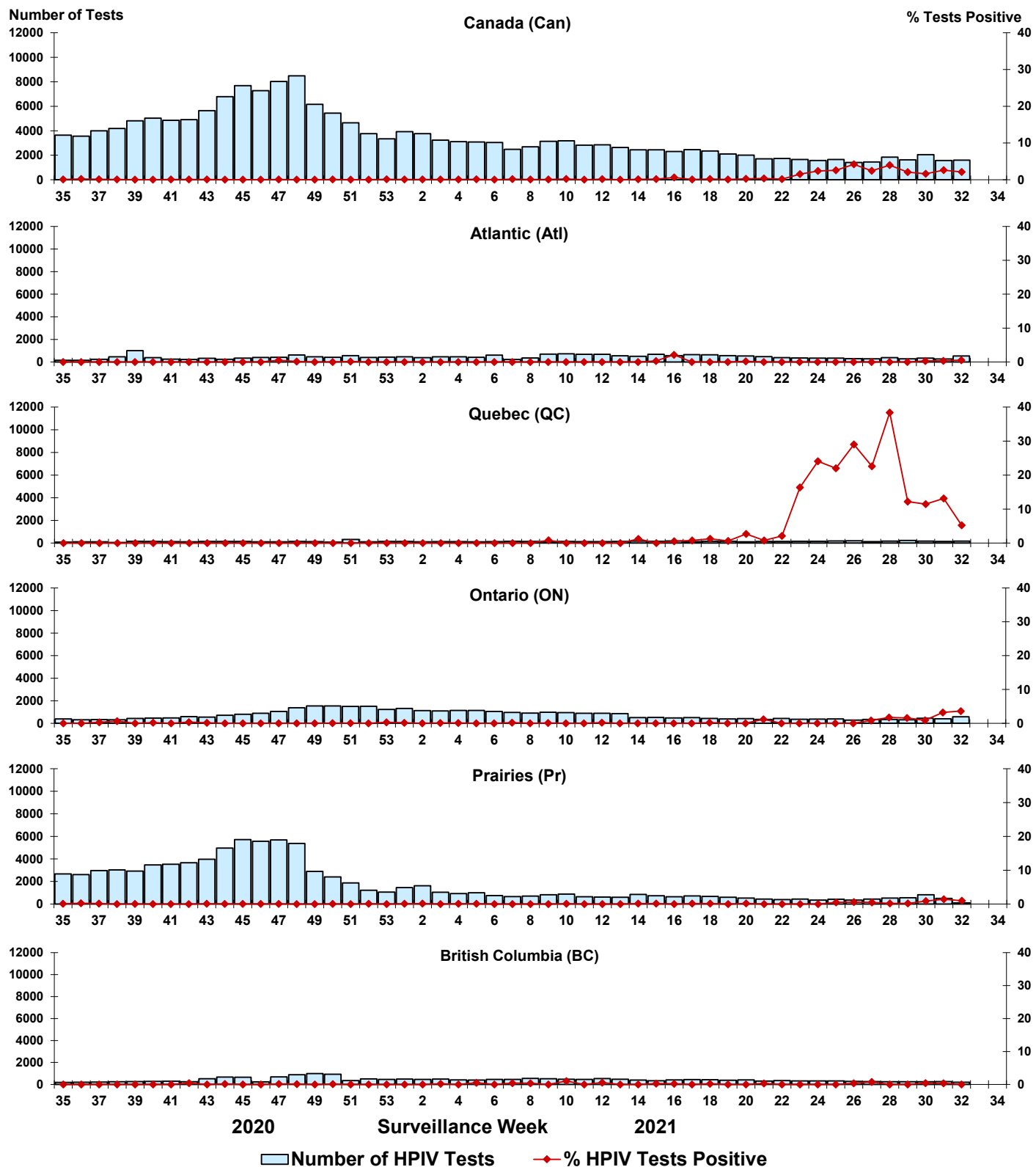


Figure 6: Positive Adenovirus (ADV) tests (%) in Canada by region by surveillance week

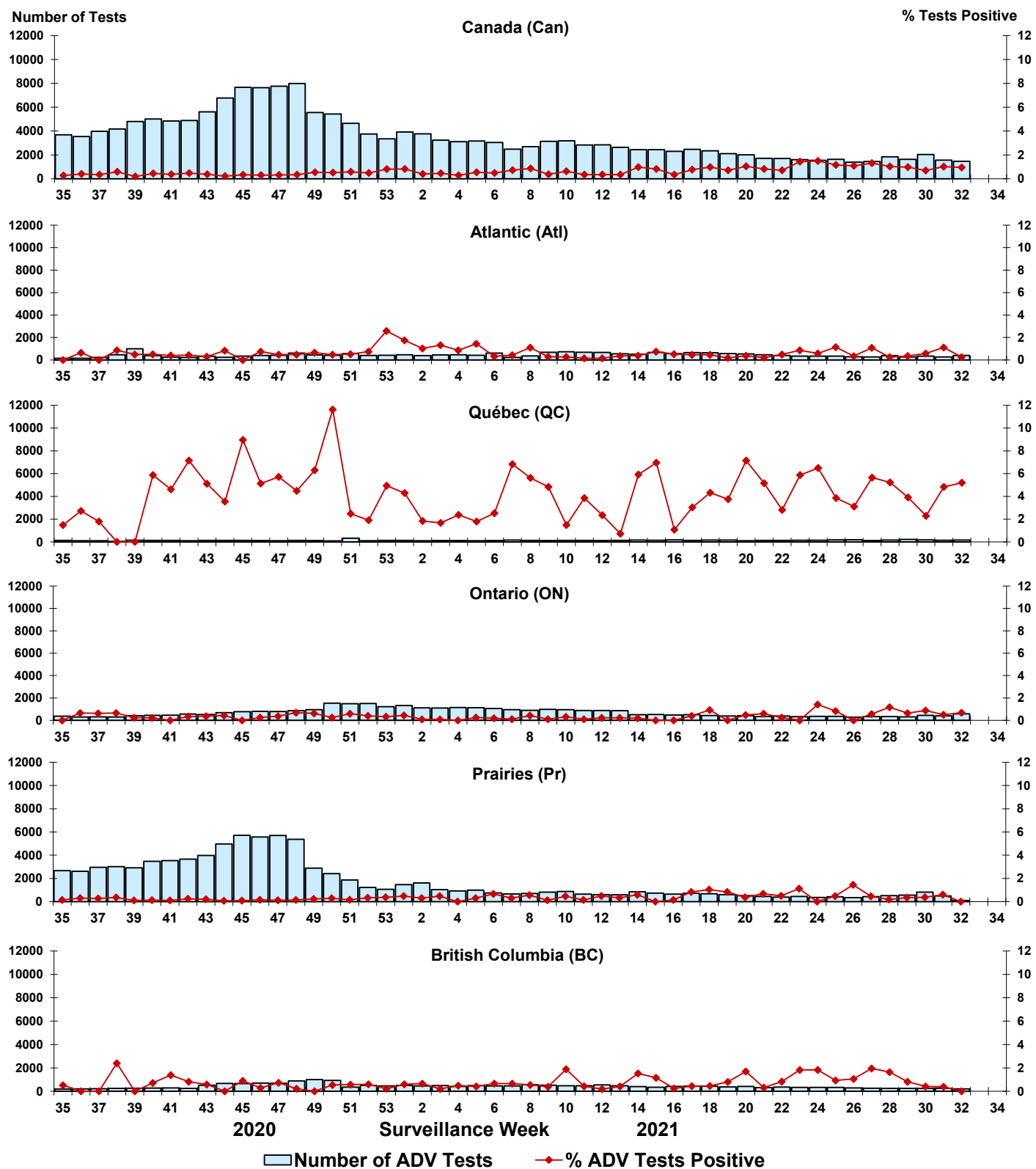


Figure 7: Positive Human metapneumovirus (HMPV) tests (%) in Canada by region by surveillance week

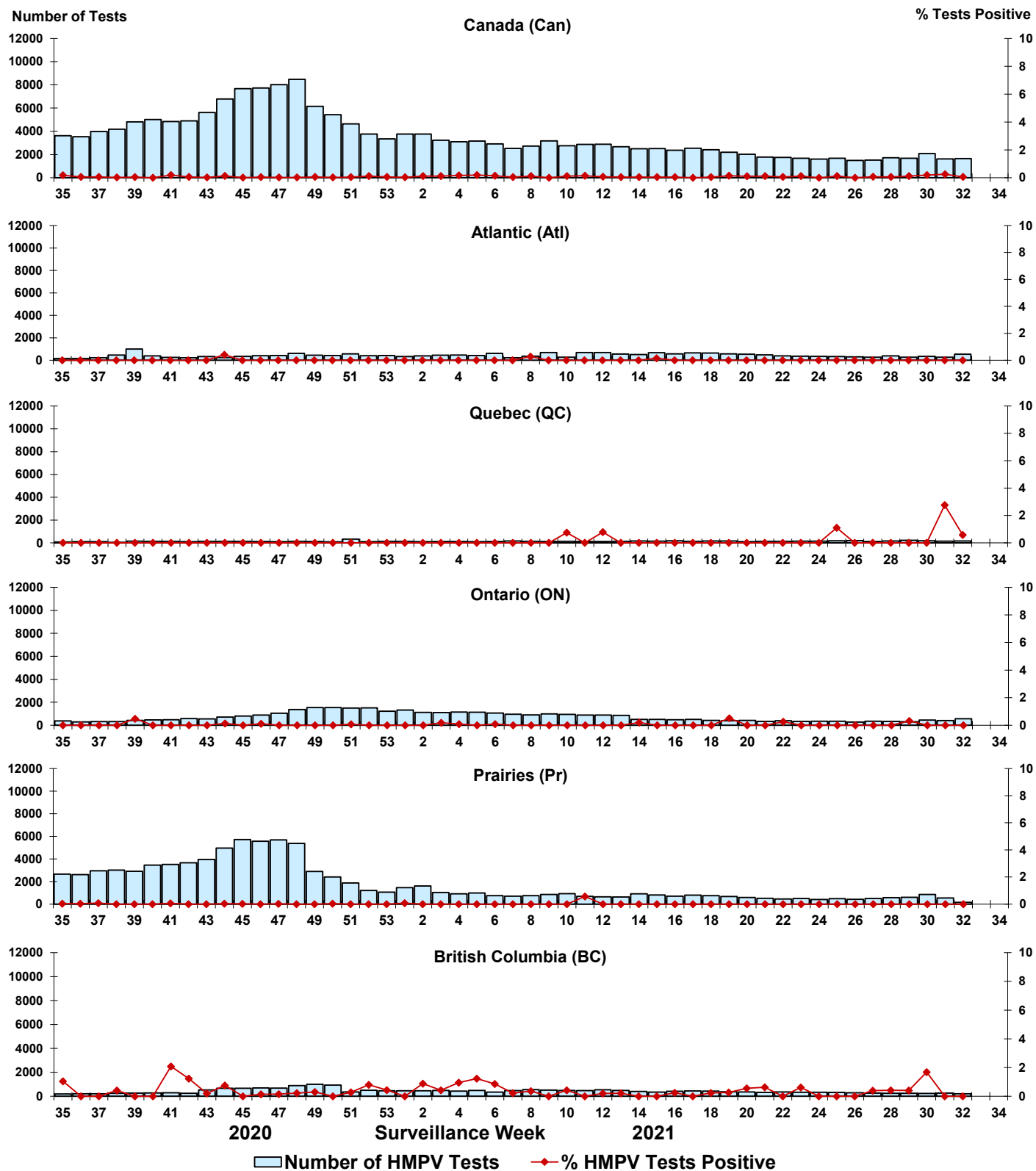


Figure 8: Positive Enterovirus/Rhinovirus (EV/RV) tests (%) in Canada by region by surveillance week

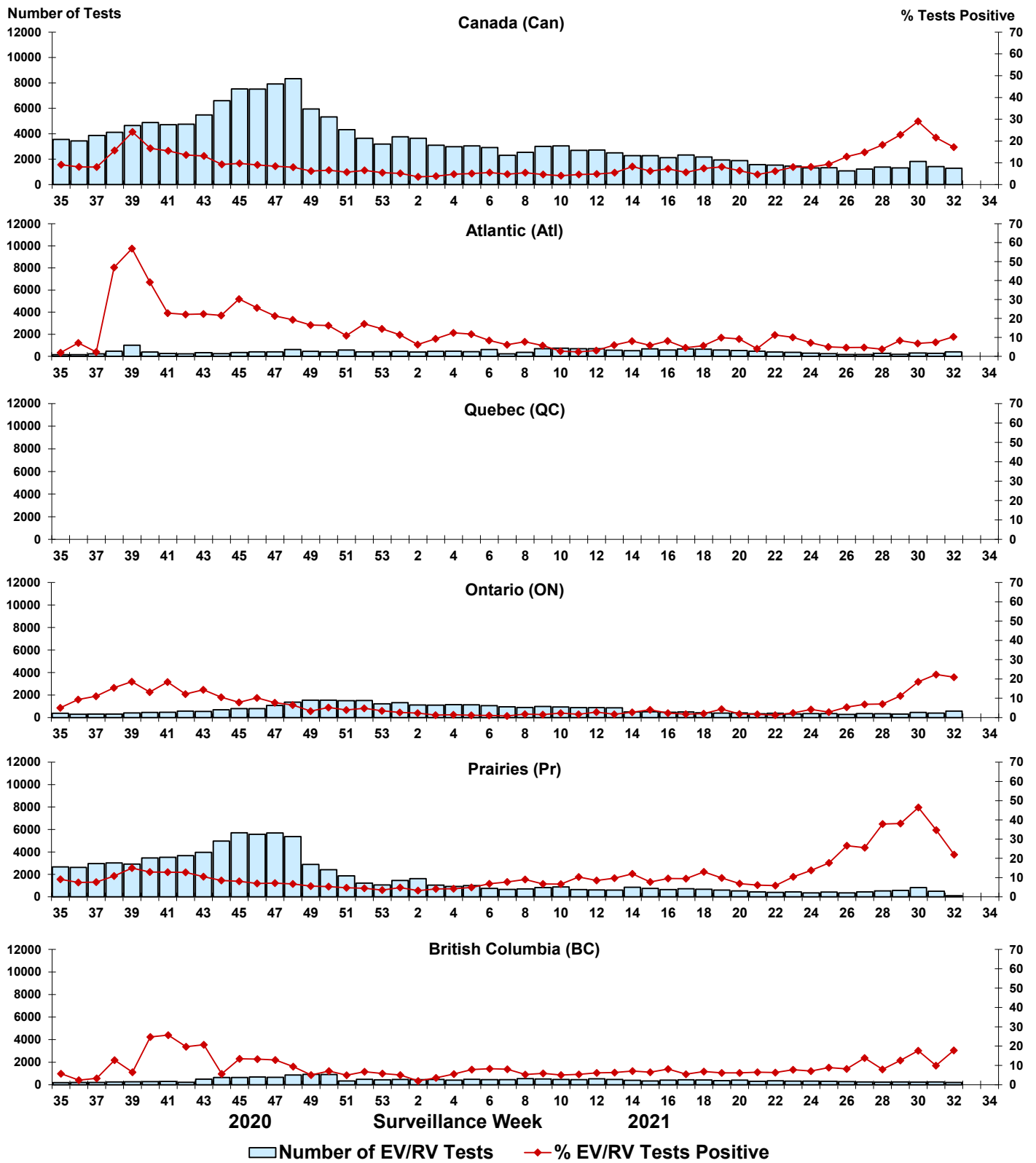
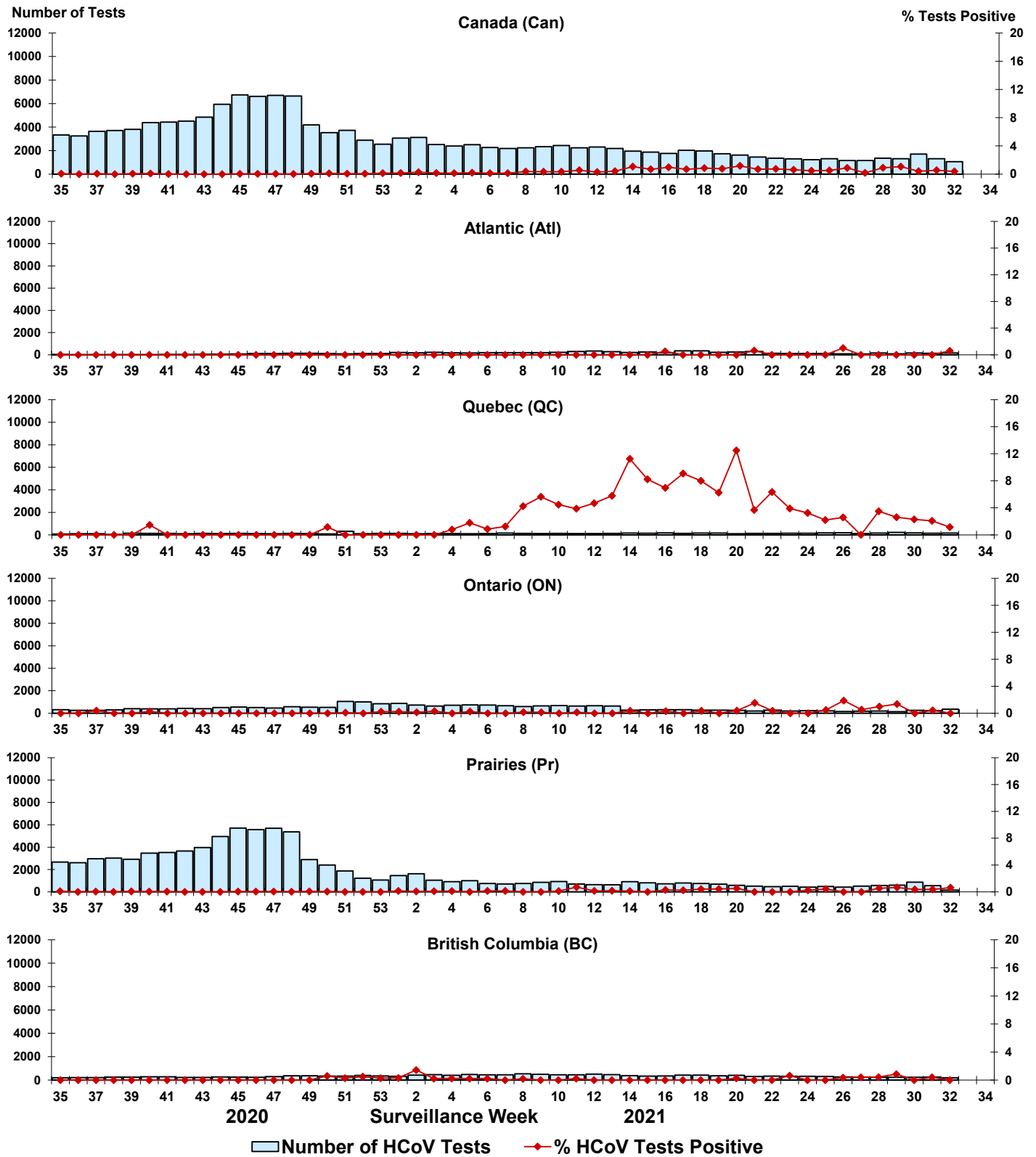


Figure 9: Positive Human coronavirus (HCoV) tests (%) in Canada by region by surveillance week



Abbreviations:

Flu: Influenza

A(H1)pdm09: Influenza A(H1N1)pdm09

A(H3): Influenza A(H3N2)

A(UnS): Influenza A(Unsubtyped)

RSV: Respiratory syncytial virus

HPIV: Human parainfluenza virus

HMPV: Human metapneumovirus

ADV: Adenovirus

EV/RV: Enterovirus/Rhinovirus

HCoV: Human coronavirus

Atl: Atlantic Canada

BC: British Columbia

Can: Canada

CHEO: Children's Hospital of Eastern Ontario

HSC: Health Sciences Centre

N.C.: Data not collected

N.R.: Data not reported for current week

ON: Ontario

PR: Prairies

P.H.O.L.: Public Health Ontario Laboratory

QC: Quebec

Terr: Territories of Canada

UHN: University Health Network