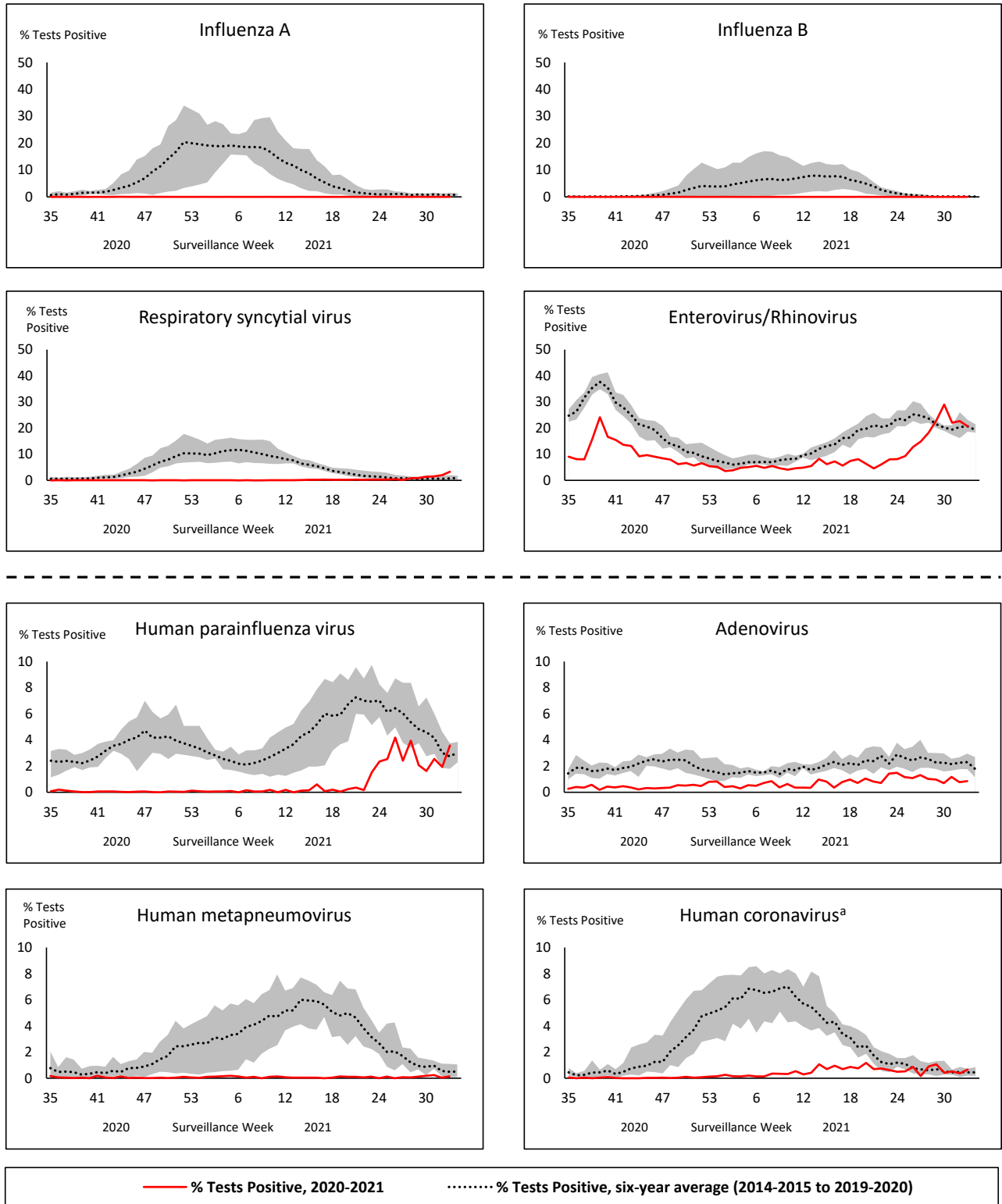


Respiratory Virus Report, Week 33 - ending August 21, 2021

The Respiratory Virus Detection Surveillance System collects data from select laboratories across Canada on the number of tests performed and the number of tests positive for influenza and other respiratory viruses. Data are reported on a weekly basis year-round to the Centre for Immunization and Respiratory Infectious Diseases (CIRID), Public Health Agency of Canada. These data are also summarized in the weekly FluWatch report.

In this Respiratory Virus Report, the number of detections of coronavirus reflects only seasonal human coronaviruses, not the novel pandemic coronavirus (SARS-CoV-2) that causes COVID-19. For information on COVID-19, see the [Coronavirus disease \(COVID-19\): Outbreak update](#).

Figure 1: Positive respiratory virus tests (%) reported by participating laboratories in Canada by surveillance week compared to average and range from 2014-2015 to 2019-2020 season



Shaded area represents the maximum and minimum % of respiratory virus tests positive reported by week from seasons 2014-2015 to 2019-2020

Note: Data from week 11 of the 2019-2020 season onwards is excluded from the historical comparison due to the COVID-19 pandemic

Note: % Tests Positive scale changes across the dashed line

^a Human coronavirus excludes human coronaviruses SARS-CoV, MERS-CoV and SARS-CoV-2; Includes seasonal human coronaviruses HCoV-229E, HCoV-OC43, HCoV-NL63, HCoV-HKU1.

Table 1: Respiratory virus detections for the week ending August 21, 2021 (surveillance week 2021-33)

Reporting Laboratory	Flu Tested	A(H1)pdm09 Positive	A(H3) Positive	A(UnS) Positive	Total Flu A Positive	Total Flu B Positive	RSV Tested	RSV Positive	HPIV Tested	HPIV 1 Positive	HPIV 2 Positive	HPIV 3 Positive	HPIV 4 Positive	Other HPIV Positive	ADV Tested	ADV Positive	HMPV Tested	HMPV Positive	EV/RV Tested	EV/RV Positive	HCoV Tested	HCoV Positive	
Newfoundland	441	0	0	0	0	0	441	2	441	0	0	1	0	3	441	0	441	0	166	13	N.C.	N.C.	
Prince Edward Island	42	0	0	0	0	0	42	0	42	0	0	2	0	0	42	0	42	0	42	23	42	0	
Nova Scotia	51	0	0	0	0	0	51	0	42	0	0	2	0	0	42	0	42	0	42	4	42	0	
New Brunswick	42	0	0	0	0	0	42	0	42	0	0	1	0	0	42	0	42	0	42	2	42	0	
Atlantic	576	0	0	0	0	0	576	2	567	0	0	6	0	3	567	0	567	0	292	42	126	0	
Région Nord-Est	426	0	0	0	0	0	29	3	0	0	0	0	0	0	0	0	0	0	N.C.	N.C.	0	0	
Québec-Chaudière-Appalaches	51	0	0	0	0	0	58	3	51	0	0	5	0	0	51	2	51	0	N.C.	N.C.	51	0	
Centre-du-Québec	9	0	0	0	0	0	9	2	18	0	0	4	0	0	18	0	18	0	N.C.	N.C.	18	0	
Montréal-Laval	488	0	0	0	0	0	483	136	131	5	0	7	0	0	131	5	131	3	N.C.	N.C.	131	3	
Ouest du Québec	17	0	0	0	0	0	17	0	0	0	0	0	0	0	0	0	0	0	N.C.	N.C.	0	0	
Montérégie	5	0	0	0	0	0	5	3	0	0	0	0	0	0	0	0	0	0	N.C.	N.C.	0	0	
Province of Québec	996	0	0	0	0	0	601	147	200	5	0	16	0	0	200	7	200	3	N.C.	N.C.	200	3	
P.H.O.L. - Ottawa	54	0	0	0	0	0	54	3	54	0	0	0	0	15	54	4	54	0	54	21	54	2	
CHEO - Ottawa	82	0	0	0	0	0	82	1	22	0	0	1	0	0	22	0	22	0	22	5	22	0	
P.H.O.L. - Kingston	28	0	0	0	0	0	28	0	28	0	0	0	0	9	28	0	28	0	28	11	28	0	
UHN / Mount Sinai Hospital	349	0	0	0	0	0	349	0	15	0	0	0	0	0	15	0	15	0	15	0	15	0	
P.H.O.L. - Toronto	122	0	0	0	0	0	122	0	122	0	0	0	0	1	122	0	121	0	122	34	121	4	
Sick Kids Hospital - Toronto	N.R.	N.R.	N.R.	N.R.	N.R.	N.R.	N.R.	N.R.	N.R.	N.R.	N.R.	N.R.	N.R.	N.R.	N.R.	N.R.	N.R.	N.R.	N.R.	N.R.	N.R.	N.R.	N.R.
Sunnybrook & Women's College HSC	N.R.	N.R.	N.R.	N.R.	N.R.	N.R.	N.R.	N.R.	N.R.	N.R.	N.R.	N.R.	N.R.	N.R.	N.R.	N.R.	N.R.	N.R.	N.R.	N.R.	N.R.	N.R.	N.R.
P.H.O.L. - Sault Ste. Marie	10	0	0	0	0	0	10	0	10	0	0	0	0	0	10	0	10	0	10	2	10	0	
P.H.O.L. - Timmins	2	0	0	0	0	0	2	0	2	0	0	0	0	0	2	0	2	0	2	0	2	0	
St. Joseph's - London	N.R.	N.R.	N.R.	N.R.	N.R.	N.R.	N.R.	N.R.	N.R.	N.R.	N.R.	N.R.	N.R.	N.R.	N.R.	N.R.	N.R.	N.R.	N.R.	N.R.	N.R.	N.R.	N.R.
P.H.O.L. - London	29	0	0	0	0	0	29	0	29	0	0	0	0	0	29	0	29	0	29	4	29	0	
P.H.O.L. - Orillia	4	0	0	0	0	0	4	0	4	0	0	0	0	0	4	0	4	0	4	3	4	0	
P.H.O.L. - Thunder Bay	5	0	0	0	0	0	5	0	5	0	0	0	0	0	5	0	5	0	5	1	5	0	
P.H.O.L. - Sudbury	9	0	0	0	0	0	9	0	9	0	0	0	0	0	9	0	9	0	9	1	9	0	
P.H.O.L. - Hamilton	15	0	0	0	0	0	15	0	15	0	0	0	0	0	15	0	15	0	15	7	15	0	
P.H.O.L. - Peterborough	8	0	0	0	0	0	8	0	8	0	0	0	0	0	8	0	8	0	8	0	8	0	
St. Joseph's - Hamilton	202	0	0	0	0	0	202	0	202	0	0	16	0	0	202	0	202	0	202	43	0	0	
Province of Ontario	919	0	0	0	0	0	919	4	525	0	0	17	0	25	525	4	524	0	525	132	322	6	
Province of Manitoba	1151	0	0	0	0	0	1151	0	20	0	0	0	0	0	20	2	66	0	20	9	66	1	
Province of Saskatchewan	48	0	0	0	0	1	48	0	41	0	0	0	0	0	41	0	41	0	41	14	41	0	
Province of Alberta	1155	0	0	1	1	1	450	0	450	0	0	2	0	0	450	2	450	0	450	93	450	0	
Prairies	2354	0	0	1	1	2	1649	0	511	0	0	2	0	0	511	4	557	0	511	116	557	1	
British Columbia	769	0	0	0	0	0	769	1	291	0	0	1	0	0	291	3	291	0	285	42	284	0	
Yukon	123	0	0	0	0	0	123	0	N.C.	N.C.	N.C.	N.C.	N.C.	N.C.	N.C.	N.C.	N.C.	N.C.	N.C.	N.C.	N.C.	N.C.	N.C.
Northwest Territories	9	0	0	0	0	0	8	0	8	0	0	0	0	0	8	0	8	0	8	3	8	0	
Nunavut	2	0	0	0	0	0	1	0	1	0	0	0	0	0	1	0	1	0	1	0	0	0	
Territories	134	0	0	0	0	0	132	0	9	0	0	0	0	0	9	0	9	0	9	3	8	0	
CANADA	5748	0	0	1	1	2	4646	154	2103	5	0	42	0	28	2103	18	2148	3	1622	335	1497	10	

The data in the RVDSS report represent surveillance data available at the time of writing. Data missing from the current week are denoted by N.R. Data not collected by reporting lab denoted by N.C.

Specimens from Yukon (YT), Northwest Territories (NT) and Nunavut (NU) are sent to reference laboratories in other provinces and reported results reflect specimens identified as originating from YT, NT or NU.

Results from British Columbia comprise of specimens from the following sites: BC Children's and Women's Hospital, Children's and Women's Hospital Laboratory, Fraser Health Medical Microbiology Laboratory, Island Health, Providence Health Care, Powell River Hospital, St. Paul's Hospital, Vancouver General Hospital, Victoria General Hospital, BCCDC Public Health Laboratory, Interior Health Authority sites and Northern Health Authority sites.

Delays in the reporting of data may cause data to change retrospectively.

Influenza co-detections may cause the sum of A(H1)pdm09, A(H3), and A(UnS) positive results to exceed the sum of Total Flu A Positive results.

Table 2: Cumulative respiratory virus detections from August 23, 2020 to August 21, 2021 (surveillance week 2020-35 to 2021-33)

Reporting Laboratory	Flu Tested	A(H1)pdm09 Positive	A(H3) Positive	A(UnS) Positive	Total Flu A Positive	Total Flu B Positive	RSV Tested	RSV Positive	HPIV Tested	HPIV 1 Positive	HPIV 2 Positive	HPIV 3 Positive	HPIV 4 Positive	Other HPIV Positive	ADV Tested	ADV Positive	HMPV Tested	HMPV Positive	EV/RV Tested	EV/RV Positive	HCoV Tested	HCoV Positive
Newfoundland	15194	0	0	0	0	0	15193	16	15193	1	0	7	0	4	15081	57	14606	2	14136	2258	N.C.	N.C.
Prince Edward Island	4385	0	0	0	0	0	4385	5	4381	3	0	2	1	0	4381	47	4381	0	4380	557	4380	2
Nova Scotia	8855	0	0	0	0	0	8858	0	1639	0	10	2	1	0	1639	17	1639	1	1639	96	1667	0
New Brunswick	55146	0	0	0	0	1	21011	0	2004	0	0	2	0	0	1995	12	1995	0	1995	70	1950	3
Atlantic	83580	0	0	0	0	1	49447	21	23217	4	10	13	2	4	23096	133	22621	3	22150	2981	7997	5
Région Nord-Est	11889	0	0	0	0	0	1353	4	8	0	0	0	0	0	8	1	8	0	N.C.	N.C.	8	0
Québec-Chaudière-Appalaches	1053	0	0	1	1	0	1183	10	1021	0	0	61	1	0	1023	56	1018	0	N.C.	N.C.	1001	31
Centre-du-Québec	1014	0	0	0	0	0	1022	5	541	0	0	25	0	0	539	29	541	0	N.C.	N.C.	538	17
Montréal-Laval	14188	0	0	0	0	0	13226	610	5806	93	0	184	0	0	5860	217	5790	12	N.C.	N.C.	5790	151
Ouest du Québec	2693	0	0	0	0	0	2584	2	0	0	0	0	0	0	0	0	0	0	N.C.	N.C.	0	0
Montérégie	1293	0	0	0	0	0	1293	10	0	0	0	0	0	0	0	0	0	0	N.C.	N.C.	0	0
Province of Québec	32130	0	0	1	1	0	20661	641	7376	93	0	270	1	0	7430	303	7357	12	N.C.	N.C.	7337	199
P.H.O.L. - Ottawa	767	0	0	0	0	0	767	4	656	0	0	0	0	15	656	4	655	0	656	56	655	4
CHEO - Ottawa	5750	0	0	1	1	1	5347	7	1236	0	0	8	0	0	1111	18	1111	1	1111	132	1111	7
P.H.O.L. - Kingston	1003	0	0	1	1	0	1003	0	677	0	0	0	0	17	677	5	668	0	677	151	668	0
UHN / Mount Sinai Hospital	18321	2	0	2	4	1	18252	7	10817	3	2	5	8	0	9191	11	10777	10	10574	105	8613	7
P.H.O.L. - Toronto	7769	0	0	0	0	0	7766	3	6734	0	0	0	0	9	6736	25	6729	3	6734	322	6729	10
Sick Kids Hospital - Toronto	1380	0	0	0	0	0	0	0	1380	0	0	1	0	0	1380	21	1380	0	1380	134	1380	1
Sunnybrook & Women's College HSC	0	0	0	0	0	0	0	0	0	0	0	0	0	0	0	0	0	0	0	0	0	0
P.H.O.L. - Sault Ste. Marie	205	0	0	2	2	0	203	0	129	0	0	0	0	0	129	0	129	0	129	9	129	0
P.H.O.L. - Timmins	640	0	0	0	0	0	640	0	180	0	0	0	0	0	180	1	179	0	180	32	179	0
St. Joseph's - London	218	0	0	0	0	0	218	0	55	0	0	0	0	0	55	0	55	0	91	8	36	0
P.H.O.L. - London	2113	1	0	5	6	2	2103	0	1441	0	0	0	0	2	1441	2	1435	0	1441	136	1435	3
P.H.O.L. - Orillia	447	0	0	1	1	0	445	0	227	0	0	0	0	0	227	2	227	0	227	26	227	0
P.H.O.L. - Thunder Bay	440	0	0	0	0	0	440	0	420	0	0	0	0	0	421	3	420	0	420	147	420	0
P.H.O.L. - Sudbury	566	0	0	0	0	0	564	1	385	0	0	0	0	4	385	4	385	0	385	33	385	7
P.H.O.L. - Hamilton	1645	0	1	0	1	0	1589	1	1332	0	0	0	0	2	1332	4	1332	0	1332	125	1332	0
P.H.O.L. - Peterborough	612	0	0	1	1	0	566	1	453	0	0	0	0	0	453	0	452	0	453	30	452	0
St. Joseph's - Hamilton	11573	0	1	0	1	0	11573	4	11573	0	0	45	0	0	11573	24	11573	0	11573	646	0	0
Province of Ontario	53449	3	2	13	18	4	51476	28	37695	3	2	59	8	49	35947	124	37507	14	37363	2092	23751	39
Manitoba	70963	0	1	3	4	2	70953	70	3000	0	1	3	0	0	3000	22	4395	1	3000	204	4395	9
Province of Saskatchewan	172358	0	0	1	1	1	27491	4	2395	0	0	1	2	0	2395	18	2395	4	2395	284	2395	16
Province of Alberta	141632	0	0	2	2	1	83118	0	83118	4	20	25	12	0	83118	182	83118	11	83118	8133	83118	41
Prairies	384953	0	1	6	7	4	181562	74	88513	4	21	29	14	0	88513	222	89908	16	88513	8621	89908	66
British Columbia	94963	3	8	1	10	8	94462	8	21748	2	5	4	15	6	22294	143	21919	74	21690	1852	17523	28
Yukon	8088	0	0	8	8	7	7997	5	N.C.	N.C.	N.C.	N.C.	N.C.	N.C.	N.C.	N.C.	N.C.	N.C.	N.C.	N.C.	N.C.	N.C.
Northwest Territories	1249	0	0	0	0	0	1185	0	1185	0	0	0	1	0	1185	12	1185	1	1185	333	1185	1
Nunavut	1136	0	0	0	0	0	1110	0	1110	3	1	0	0	0	1110	26	1110	5	1110	286	197	0
Territories	10473	0	0	8	8	7	10292	5	2295	3	1	0	1	0	2295	38	2295	6	2295	619	1382	1
CANADA	659548	6	11	29	44	24	407900	777	180844	109	39	375	41	59	179575	963	181607	125	172011	16165	147898	338

The data in the RVDSS report represent surveillance data available at the time of writing. Data not collected by reporting lab denoted by N.C.

Specimens from Yukon (YT), Northwest Territories (NT) and Nunavut (NU) are sent to reference laboratories in other provinces and reported results reflect specimens identified as originating from YT, NT or NU.

Results from British Columbia comprise of specimens from the following sites: BC Children's and Women's Hospital, Children's and Women's Hospital Laboratory, Fraser Health Medical Microbiology Laboratory, Island Health, Providence Health Care, Powell River Hospital, St. Paul's Hospital, Vancouver General Hospital, Victoria General Hospital, BCCDC Public Health Laboratory, Interior Health Authority sites and Northern Health Authority sites.

Delays in the reporting of data may cause data to change retrospectively. Due to these delays, the sum of weekly report totals do not add up to cumulative totals.

Influenza co-detections may cause the sum of A(H1N1)pdm09, A(H3), and A(UnS) positive results to exceed the sum of Total Flu A Positive results.

Figure 2: Number of positive respiratory virus tests reported by participating laboratories in Canada by surveillance week

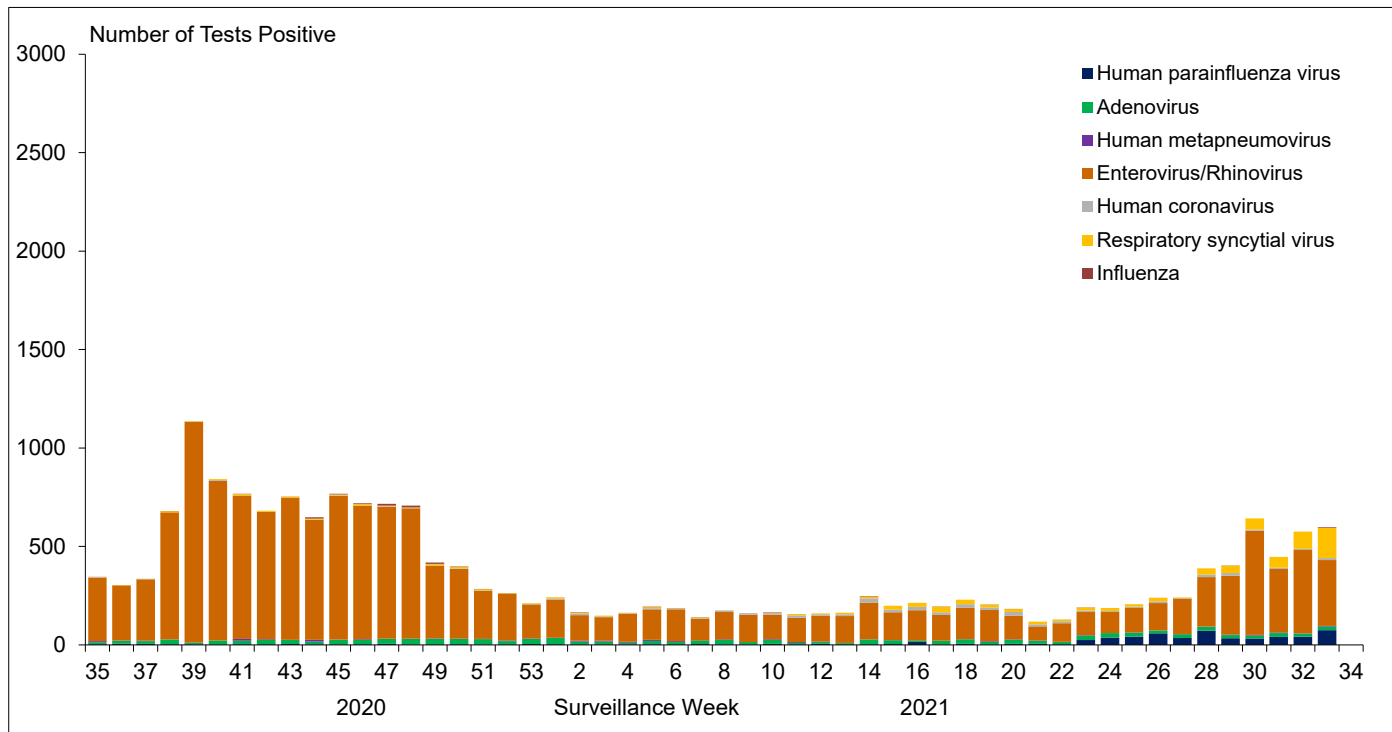


Figure 3: Positive Influenza (Flu) tests (%) in Canada by region by surveillance week

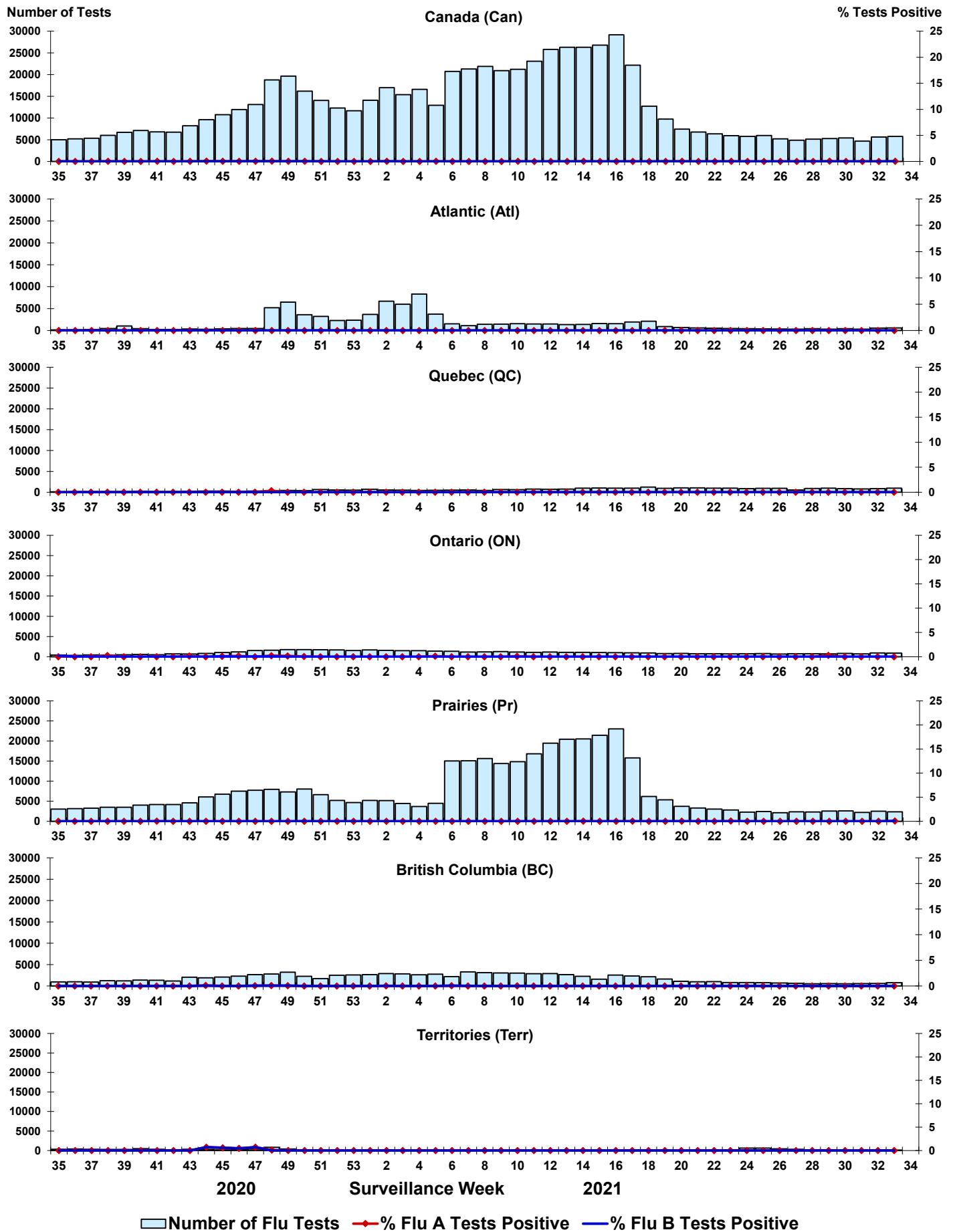


Figure 4: Positive Respiratory syncytial virus (RSV) tests (%) in Canada by region by surveillance week

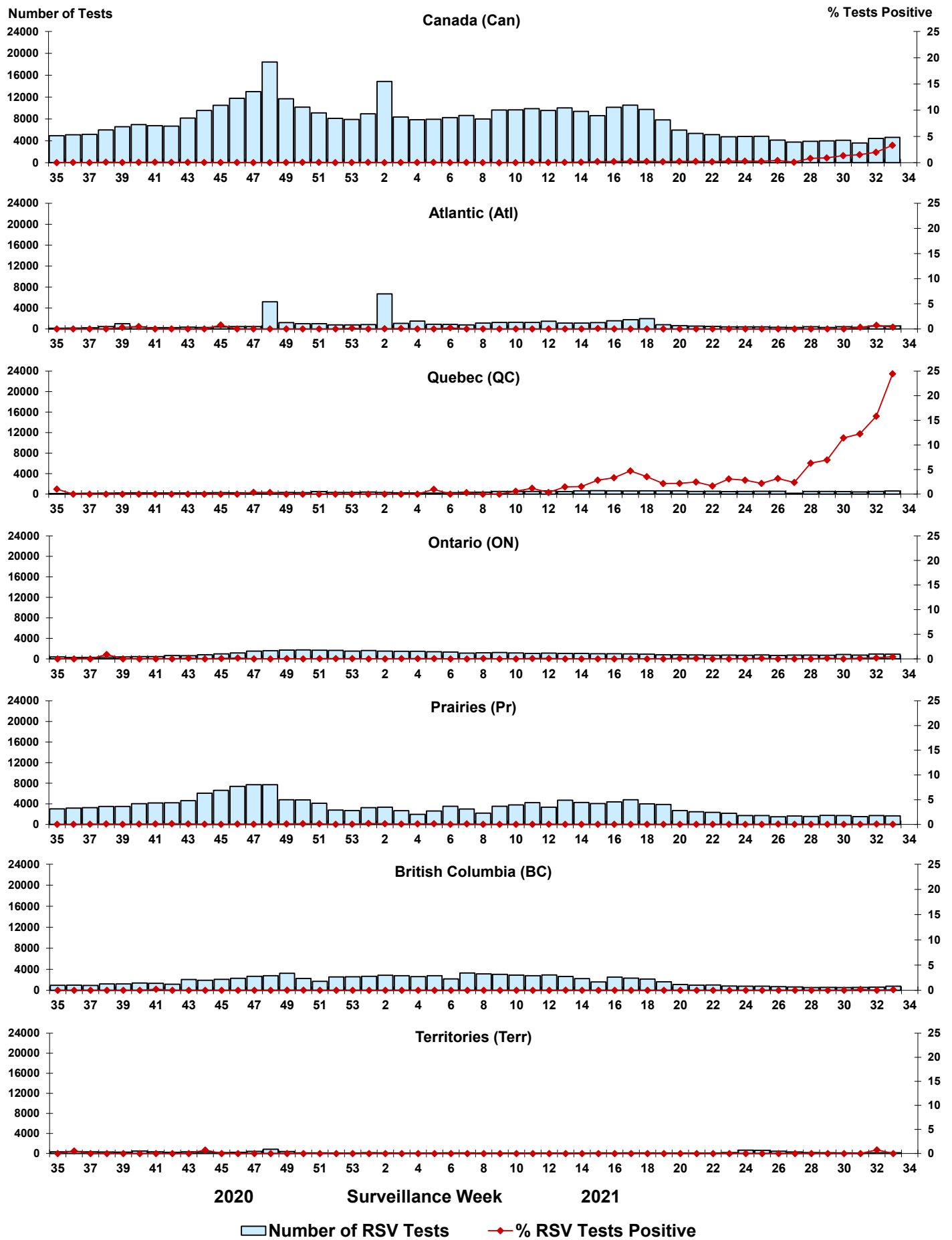


Figure 5: Positive Human parainfluenza virus (HPIV) tests (%) in Canada by region by surveillance week

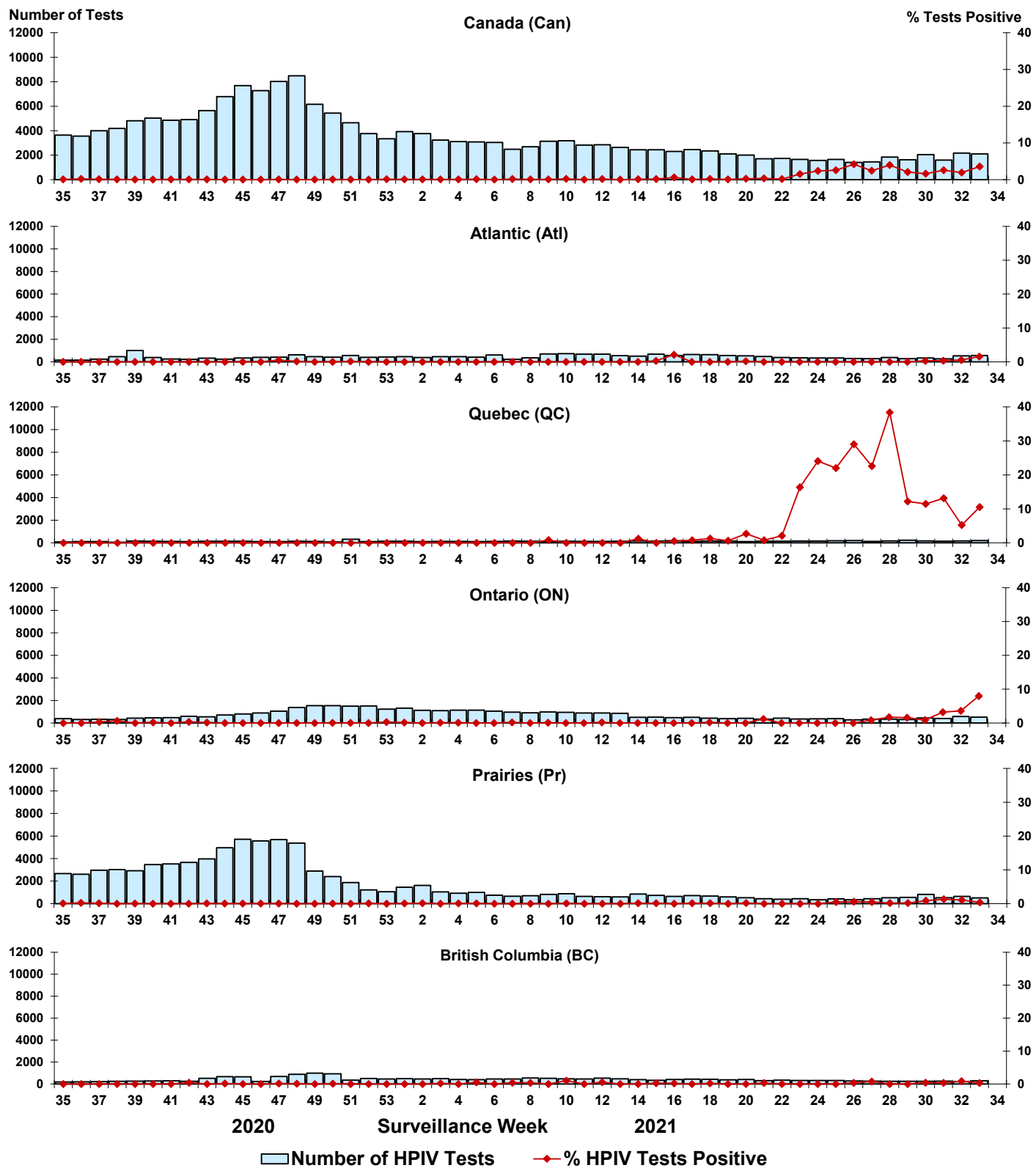


Figure 6: Positive Adenovirus (ADV) tests (%) in Canada by region by surveillance week

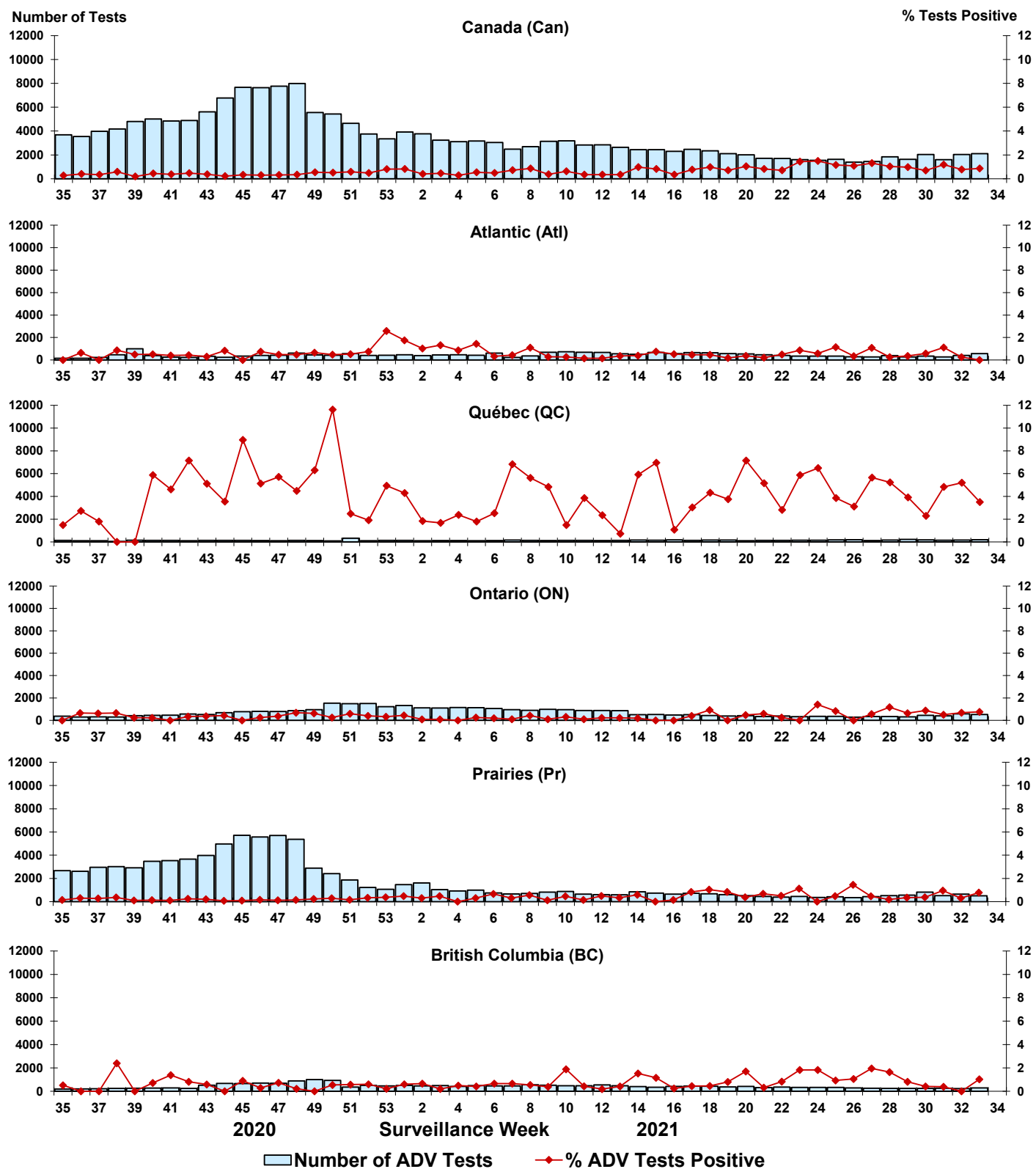


Figure 7: Positive Human metapneumovirus (HMPV) tests (%) in Canada by region by surveillance week

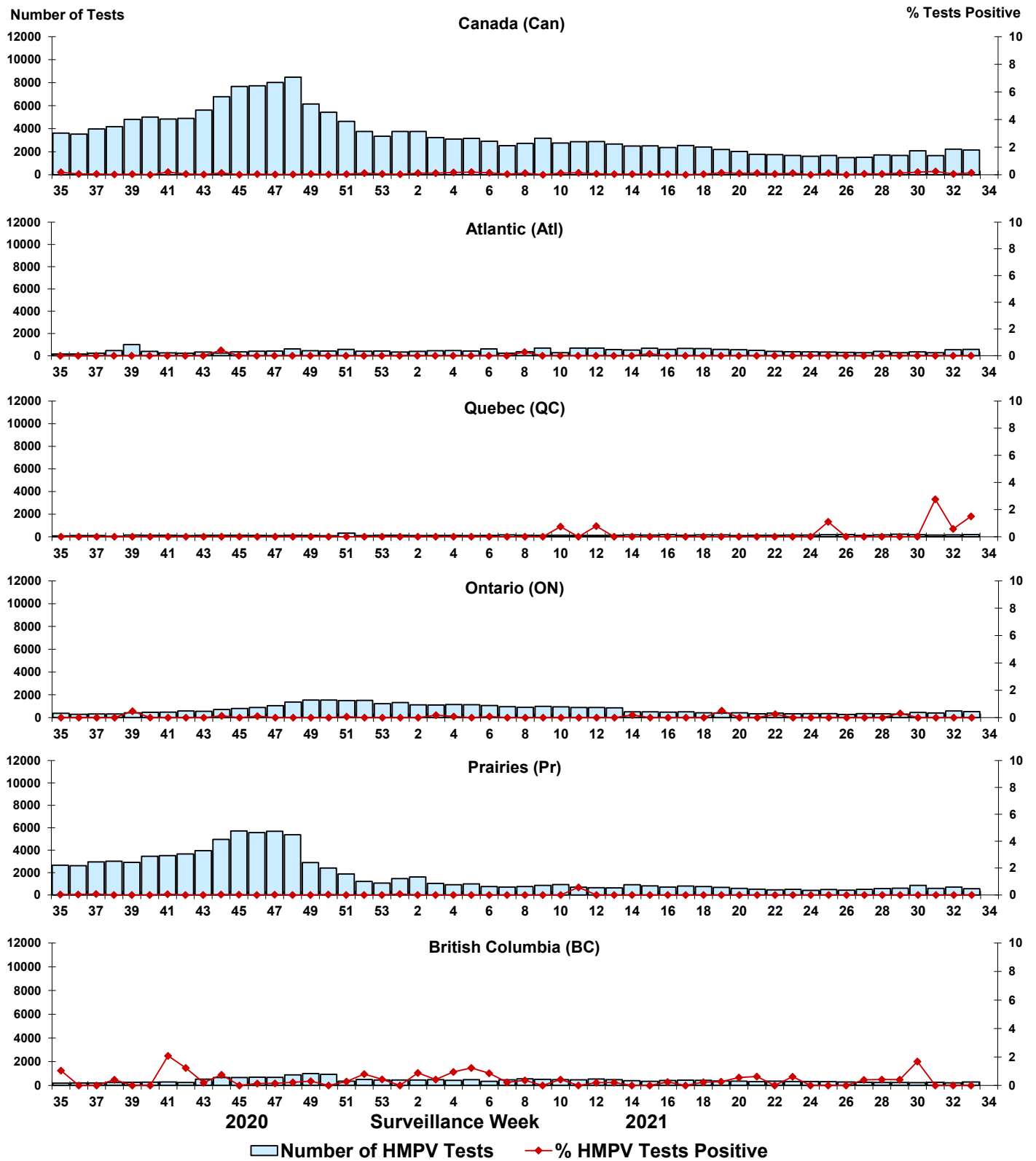


Figure 8: Positive Enterovirus/Rhinovirus (EV/RV) tests (%) in Canada by region by surveillance week

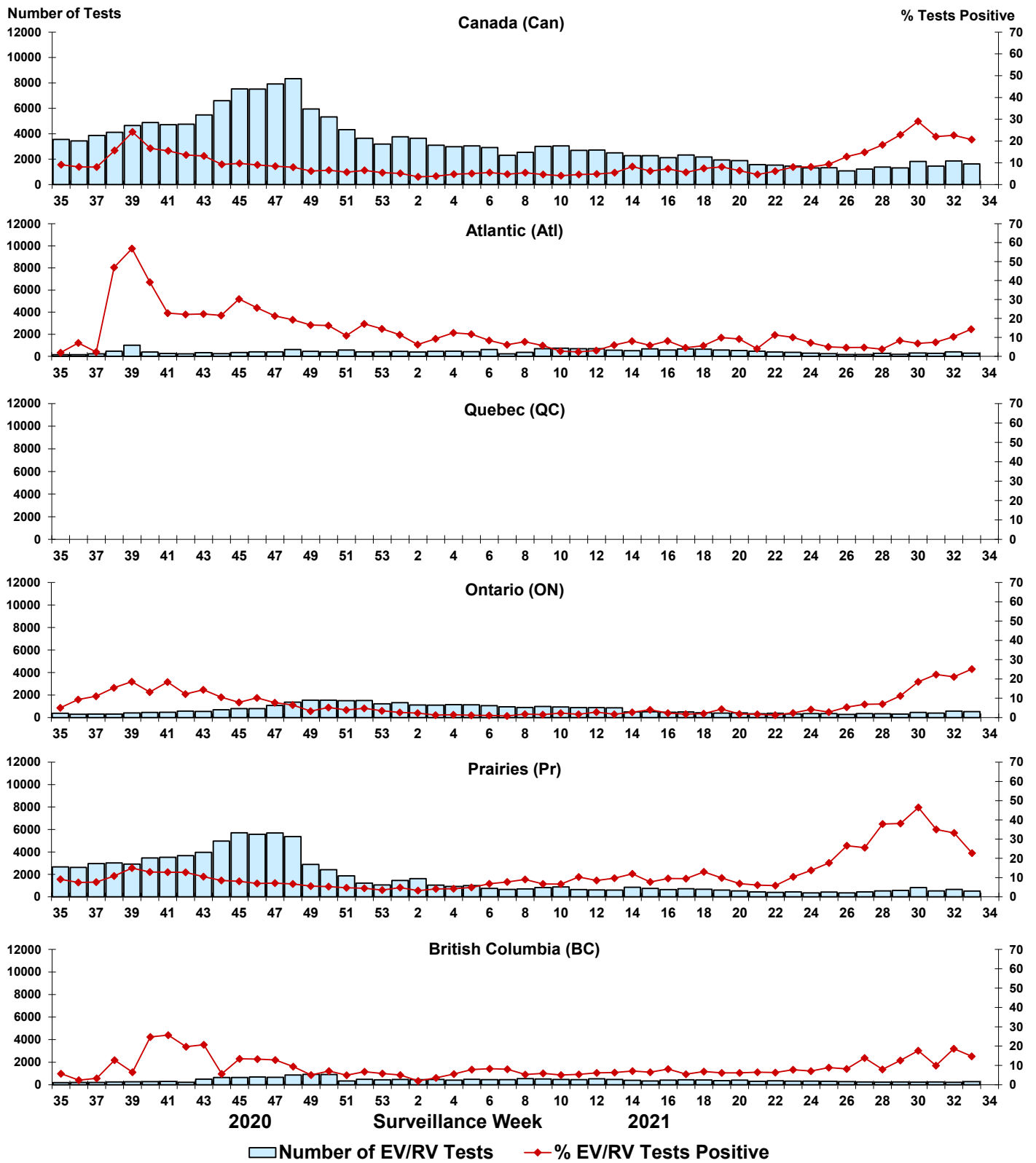
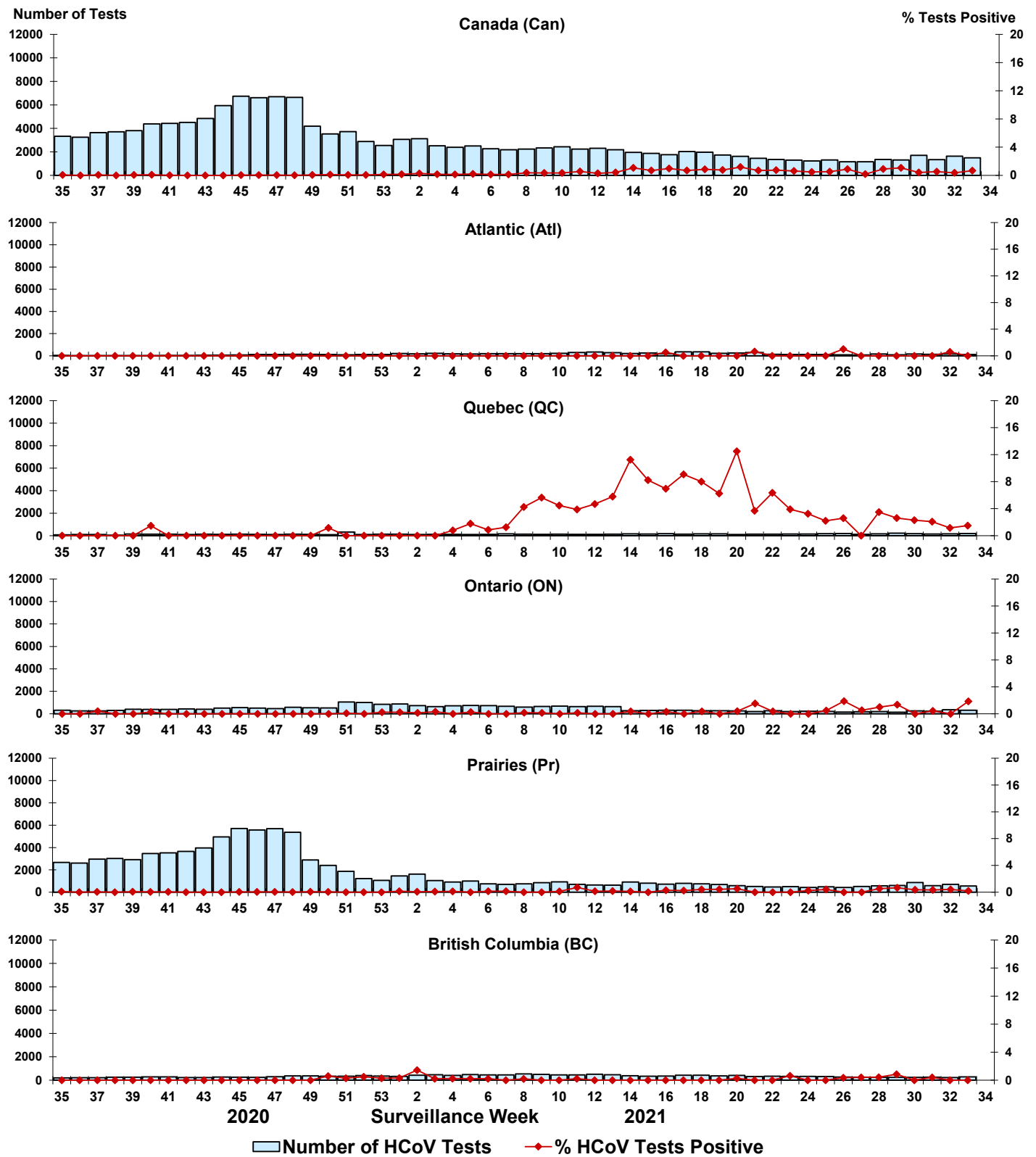


Figure 9: Positive Human coronavirus (HCoV) tests (%) in Canada by region by surveillance week



Abbreviations:

Flu: Influenza

A(H1)pdm09: Influenza A(H1N1)pdm09

A(H3): Influenza A(H3N2)

A(UnS): Influenza A(Unsubtyped)

RSV: Respiratory syncytial virus

HPIV: Human parainfluenza virus

HMPV: Human metapneumovirus

ADV: Adenovirus

EV/RV: Enterovirus/Rhinovirus

HCoV: Human coronavirus

Atl: Atlantic Canada

BC: British Columbia

Can: Canada

CHEO: Children's Hospital of Eastern Ontario

HSC: Health Sciences Centre

N.C.: Data not collected

N.R.: Data not reported for current week

ON: Ontario

PR: Prairies

P.H.O.L.: Public Health Ontario Laboratory

QC: Quebec

Terr: Territories of Canada

UHN: University Health Network