

Respiratory Virus Report, Week 4 - ending January 30, 2021

The Respiratory Virus Detection Surveillance System collects data from select laboratories across Canada on the number of tests performed and the number of tests positive for influenza and other respiratory viruses. Data are reported on a weekly basis year-round to the Centre for Immunization and Respiratory Infectious Diseases (CIRID), Public Health Agency of Canada. These data are also summarized in the weekly FluWatch report.

In this Respiratory Virus Report, the number of detections of coronavirus reflects only seasonal human coronaviruses, not the novel pandemic coronavirus (SARS-CoV2) that causes COVID-19. For information on COVID-19, see the [Coronavirus disease \(COVID-19\): Outbreak](#)

Table 1: Respiratory Virus Detections/Isolations for the week ending January 30, 2021 (Reporting Week 202104)

Reporting Laboratory	Flu Tested	A(H1N1)pdm09 Positive	A(H3) Positive	A(UnS) Positive	Total Flu A Positive	Total Flu B Positive	RSV Tested	RSV Positive	PIV Tested	PIV 1 Positive	PIV 2 Positive	PIV 3 Positive	PIV 4 Positive	Other PIV Positive	Adeno Tested	Adeno Positive	hMPV Tested	hMPV Positive	Entero/Rhino Tested	Entero/Rhino Positive	Coron Tested	Coron Positive
Newfoundland	287	0	0	0	0	0	287	0	287	0	0	0	0	0	287	1	287	0	287	46	N.A.	N.A.
Prince Edward Island	142	0	0	0	0	0	142	0	142	0	0	0	0	0	142	2	142	0	142	10	142	0
Nova Scotia	49	0	0	0	0	0	50	0	21	0	0	0	0	0	21	0	21	0	21	2	21	0
New Brunswick	7832	0	0	0	0	0	1033	0	16	0	0	0	0	0	16	1	16	0	16	0	16	0
Atlantic	8310	0	0	0	0	0	1512	0	466	0	0	0	0	0	466	4	466	0	466	58	179	0
Région Nord-Est	152	0	0	0	0	0	27	0	0	0	0	0	0	0	0	0	0	0	N.A.	N.A.	0	0
Québec-Chaudière-Appalaches	23	0	0	0	0	0	24	0	16	0	0	0	0	0	16	1	16	0	N.A.	N.A.	16	1
Centre-du-Québec	18	0	0	0	0	0	18	0	9	0	0	0	0	0	9	1	9	0	N.A.	N.A.	9	0
Montréal-Laval	203	0	0	0	0	0	122	0	101	0	0	0	0	0	101	1	101	0	N.A.	N.A.	101	0
Ouest du Québec	22	0	0	0	0	0	18	0	0	0	0	0	0	0	0	0	0	0	N.A.	N.A.	0	0
Montérégie	0	0	0	0	0	0	0	0	0	0	0	0	0	0	0	0	0	0	N.A.	N.A.	0	0
Province of Québec	418	0	0	0	0	0	209	0	126	0	0	0	0	0	126	3	126	0	N.A.	N.A.	126	1
P.H.O.L. - Ottawa	15	0	0	0	0	0	15	0	8	0	0	0	0	0	8	0	8	0	8	0	8	0
CHEO - Ottawa	165	0	0	0	0	0	165	0	10	0	0	0	0	0	10	0	10	0	10	4	10	0
P.H.O.L. - Kingston	10	0	0	0	0	0	10	0	8	0	0	0	0	0	8	0	7	0	8	0	7	0
UHN / Mount Sinai Hospital	497	0	0	0	0	0	497	1	492	1	0	0	0	0	492	0	492	1	492	3	492	0
P.H.O.L. - Toronto	180	0	0	0	0	0	180	0	127	0	0	0	0	0	127	0	127	0	127	0	127	0
Sick Kids Hospital - Toronto	N.A.	N.A.	N.A.	N.A.	N.A.	N.A.	N.A.	N.A.	N.A.	N.A.	N.A.	N.A.	N.A.	N.A.	N.A.	N.A.	N.A.	N.A.	N.A.	N.A.	N.A.	N.A.
Sunnybrook & Women's College HSC	N.A.	N.A.	N.A.	N.A.	N.A.	N.A.	N.A.	N.A.	N.A.	N.A.	N.A.	N.A.	N.A.	N.A.	N.A.	N.A.	N.A.	N.A.	N.A.	N.A.	N.A.	N.A.
P.H.O.L. - Sault Ste. Marie	4	0	0	0	0	0	4	0	0	0	0	0	0	0	0	0	0	0	0	0	0	0
P.H.O.L. - Timmins	49	0	0	0	0	0	49	0	11	0	0	0	0	0	11	0	11	0	11	0	11	0
St. Joseph's - London	N.A.	N.A.	N.A.	N.A.	N.A.	N.A.	N.A.	N.A.	N.A.	N.A.	N.A.	N.A.	N.A.	N.A.	N.A.	N.A.	N.A.	N.A.	N.A.	N.A.	N.A.	N.A.
P.H.O.L. - London	49	0	0	0	0	0	49	0	13	0	0	0	0	0	13	0	13	0	13	0	13	0
P.H.O.L. - Orillia	11	0	0	0	0	0	11	0	0	0	0	0	0	0	0	0	0	0	0	0	0	0
P.H.O.L. - Thunder Bay	9	0	0	0	0	0	9	0	7	0	0	0	0	0	7	0	7	0	7	1	7	0
P.H.O.L. - Sudbury	14	0	0	0	0	0	14	0	2	0	0	0	0	0	2	0	2	0	2	0	2	0
P.H.O.L. - Hamilton	25	0	0	0	0	0	25	0	11	0	0	0	0	0	11	0	11	0	11	0	11	0
P.H.O.L. - Peterborough	10	0	0	0	0	0	10	0	3	0	0	0	0	0	3	0	3	0	3	0	3	0
St. Joseph's - Hamilton	N.A.	N.A.	N.A.	N.A.	N.A.	N.A.	N.A.	N.A.	N.A.	N.A.	N.A.	N.A.	N.A.	N.A.	N.A.	N.A.	N.A.	N.A.	N.A.	N.A.	N.A.	N.A.
Province of Ontario	1038	0	0	0	0	0	1038	1	692	1	0	0	0	0	692	0	691	1	692	8	691	0
Province of Manitoba	N.A.	N.A.	N.A.	N.A.	N.A.	N.A.	N.A.	N.A.	N.A.	N.A.	N.A.	N.A.	N.A.	N.A.	N.A.	N.A.	N.A.	N.A.	N.A.	N.A.	N.A.	N.A.
Province of Saskatchewan	92	0	0	0	0	0	92	1	53	0	0	0	0	0	53	0	53	0	53	2	53	0
Province of Alberta	2403	0	0	0	0	0	731	0	731	0	1	0	0	0	731	0	731	0	731	33	731	0
Prairies	2495	0	0	0	0	0	823	1	784	0	1	0	0	0	784	0	784	0	784	35	784	0
British Columbia	2493	0	0	0	0	0	2482	0	226	0	0	0	0	0	226	0	226	4	222	7	220	1
Yukon	N.A.	N.A.	N.A.	N.A.	N.A.	N.A.	N.A.	N.A.	N.A.	N.A.	N.A.	N.A.	N.A.	N.A.	N.A.	N.A.	N.A.	N.A.	N.A.	N.A.	N.A.	N.A.
Northwest Territories	17	0	0	0	0	0	12	0	12	0	0	0	0	0	12	0	12	0	12	0	12	0
Nunavut	2	0	0	0	0	0	2	0	2	0	0	0	0	0	2	0	2	0	2	0	2	0
Territories	19	0	0	0	0	0	14	0	14	0	0	0	0	0	14	0	14	0	14	0	14	0
CANADA	14773	0	0	0	0	0	6078	2	2308	1	1	0	0	0	2308	7	2307	5	2178	108	2014	2

The data in the RVDSS report represent surveillance data available at the time of writing. Missing data are denoted by N.A.

Specimens from Yukon (YT), Northwest Territories (NT) and Nunavut (NU) are sent to reference laboratories in other provinces and reported results reflect specimens identified as originating from YT, NT or NU.

Results from British Columbia comprise of specimens from the following sites: BC Children's and Women's Hospital, Fraser Health Medical Microbiology Laboratory, Island Health, Providence Health Care, Powell River Hospital, St. Paul's Hospital, Vancouver General Hospital, Victoria General Hospital, BCCDC Public Health Laboratory, Interior Health Authority sites and Northern Health Authority sites.

Delays in the reporting of data may cause data to change retrospectively.

Table 2: Respiratory Virus Detections/Isolations for the period August 23, 2020 - January 30, 2021 (Reporting Weeks 202035-202104)

Reporting Laboratory	Flu Tested	A(H1N1)pdm09 Positive	A(H3) Positive	A(UnS) Positive	Total Flu A Positive	Total Flu B Positive	RSV Tested	RSV Positive	PIV Tested	PIV 1 Positive	PIV 2 Positive	PIV 3 Positive	PIV 4 Positive	Other PIV Positive	Adeno Tested	Adeno Positive	hMPV Tested	hMPV Positive	Entero/Rhino Tested	Entero/Rhino Positive	Coron Tested	Coron Positive
Newfoundland	6999	0	0	0	0	0	6999	8	6999	1	0	1	0	0	7003	33	6878	1	6999	1831	N.A.	N.A.
Prince Edward Island	1460	0	0	0	0	0	1460	3	1456	2	0	0	0	0	1456	23	1456	0	1456	188	1456	0
Nova Scotia	983	0	0	0	0	0	986	0	330	0	0	0	0	0	330	6	330	0	330	53	330	0
New Brunswick	43229	0	0	0	0	1	15542	0	463	0	0	0	0	0	454	7	454	0	454	44	409	0
Atlantic	52671	0	0	0	0	1	24987	11	9248	3	0	1	0	0	9243	69	9118	1	9239	2116	2195	0
Région Nord-Est	1991	0	0	0	0	0	708	1	0	0	0	0	0	0	0	0	0	0	N.A.	N.A.	0	0
Québec-Chaudière-Appalaches	535	0	0	1	1	0	592	0	360	0	0	0	0	0	362	19	357	0	N.A.	N.A.	340	1
Centre-du-Québec	551	0	0	0	0	0	556	1	179	0	0	0	0	0	177	13	179	0	N.A.	N.A.	176	0
Montréal-Laval	4154	0	0	0	0	0	3480	1	2390	0	0	0	0	0	2444	87	2377	0	N.A.	N.A.	2377	3
Ouest du Québec	655	0	0	0	0	0	605	0	0	0	0	0	0	0	0	0	0	0	N.A.	N.A.	0	0
Montérégie	1	0	0	0	0	0	1	0	0	0	0	0	0	0	0	0	0	0	N.A.	N.A.	0	0
Province of Québec	7887	0	0	1	1	0	5942	3	2929	0	0	0	0	0	2983	119	2913	0	N.A.	N.A.	2893	4
P.H.O.L. - Ottawa	362	0	0	0	0	0	362	1	319	0	0	0	0	0	319	0	318	0	319	20	318	0
CHEO - Ottawa	3282	0	0	1	1	1	2879	4	489	0	0	0	0	0	489	8	489	0	489	52	489	0
P.H.O.L. - Kingston	651	0	0	1	1	0	651	0	445	0	0	0	0	0	445	2	440	0	445	102	440	0
UHN / Mount Sinai Hospital	6006	1	0	0	1	1	5937	4	5653	1	2	2	8	0	4027	6	5613	8	5410	75	3449	4
P.H.O.L. - Toronto	3963	0	0	0	0	0	3960	2	3797	0	0	0	0	2	3798	11	3796	0	3797	138	3796	3
Sick Kids Hospital - Toronto	0	0	0	0	0	0	0	0	0	0	0	0	0	0	0	0	0	0	0	0	0	0
Sunnybrook & Women's College HSC	0	0	0	0	0	0	0	0	0	0	0	0	0	0	0	0	0	0	0	0	0	0
P.H.O.L. - Sault Ste. Marie	107	0	0	2	2	0	105	0	82	0	0	0	0	0	82	0	82	0	82	6	82	0
P.H.O.L. - Timmins	551	0	0	0	0	0	551	0	142	0	0	0	0	0	142	0	141	0	142	30	141	0
St. Joseph's - London	218	0	0	0	0	0	218	0	55	0	0	0	0	0	55	0	55	0	91	8	36	0
P.H.O.L. - London	1485	1	0	5	6	2	1475	0	1154	0	0	0	0	2	1154	2	1149	0	1154	124	1149	3
P.H.O.L. - Orillia	265	0	0	1	1	0	263	0	188	0	0	0	0	0	188	1	188	0	188	12	188	0
P.H.O.L. - Thunder Bay	343	0	0	0	0	0	343	0	335	0	0	0	0	0	336	2	335	0	335	130	335	0
P.H.O.L. - Sudbury	334	0	0	0	0	0	332	0	297	0	0	0	0	0	297	1	297	0	297	27	297	0
P.H.O.L. - Hamilton	1214	0	0	0	0	0	1167	1	1000	0	0	0	0	0	1000	2	1000	0	1000	93	1000	0
P.H.O.L. - Peterborough	341	0	0	1	1	0	295	0	235	0	0	0	0	0	235	0	235	0	235	18	235	0
St. Joseph's - Hamilton	5296	0	0	0	0	0	5296	1	5296	0	0	0	0	0	5296	16	5296	0	5296	363	0	0
Province of Ontario	24418	2	0	11	13	4	23834	13	19487	1	2	2	8	4	17863	51	19434	8	19280	1198	11955	10
Manitoba	26170	0	0	0	0	1	26170	59	1985	0	1	1	0	0	1985	13	1882	1	1985	117	1882	1
Province of Saskatchewan	3253	0	0	0	0	0	3253	3	1302	0	0	1	1	0	1302	9	1302	0	1302	134	1302	2
Province of Alberta	87601	4	0	4	8	0	67115	0	67115	2	18	2	4	0	67115	113	67115	11	67115	5655	67115	19
Prairies	117024	4	0	4	8	1	96538	62	70402	2	19	4	5	0	70402	135	70299	12	70402	5906	70299	22
British Columbia	42916	1	2	4	7	5	42821	5	10401	0	2	0	4	0	10867	51	10821	41	10650	991	6672	15
Yukon	3404	0	0	8	8	7	3357	4	N.A.	N.A.	N.A.	N.A.	N.A.	N.A.	N.A.	N.A.	N.A.	N.A.	N.A.	N.A.	N.A.	N.A.
Northwest Territories	976	0	0	0	0	0	963	0	963	0	0	0	1	0	963	8	963	1	963	294	963	0
Nunavut	1080	0	0	0	0	0	1074	0	1074	3	1	0	0	0	1074	25	1074	5	1074	277	177	0
Territories	5460	0	0	8	8	7	5394	4	2037	3	1	0	1	0	2037	33	2037	6	2037	571	1140	0
CANADA	250376	7	2	28	37	18	199516	98	114504	9	24	7	18	4	113395	458	114622	68	111608	10782	95154	51

The data in the RVDSS report represent surveillance data available at the time of writing. Missing data are denoted by N.A.

Specimens from YT, NT and NU are sent to reference laboratories in other provinces and reported results reflect specimens identified as originating from YT, NT or NU.

Results from British Columbia comprise of specimens from the following sites: BC Children's and Women's Hospital, Children's and Women's Hospital Laboratory, Fraser Health Medical Microbiology Laboratory, Island Health, Providence Health Care, Powell River Hospital, St. Paul's Hospital, Vancouver General Hospital, Victoria General Hospital, BCCDC Public Health Laboratory, Interior Health Authority sites and Northern Health Authority sites.

Delays in the reporting of data may cause data to change retrospectively.

Due to reporting delays, the sum of weekly report totals do not add up to cumulative totals.

Figure 1: Number positive laboratory tests for other respiratory viruses by report week, Canada, 2020-21

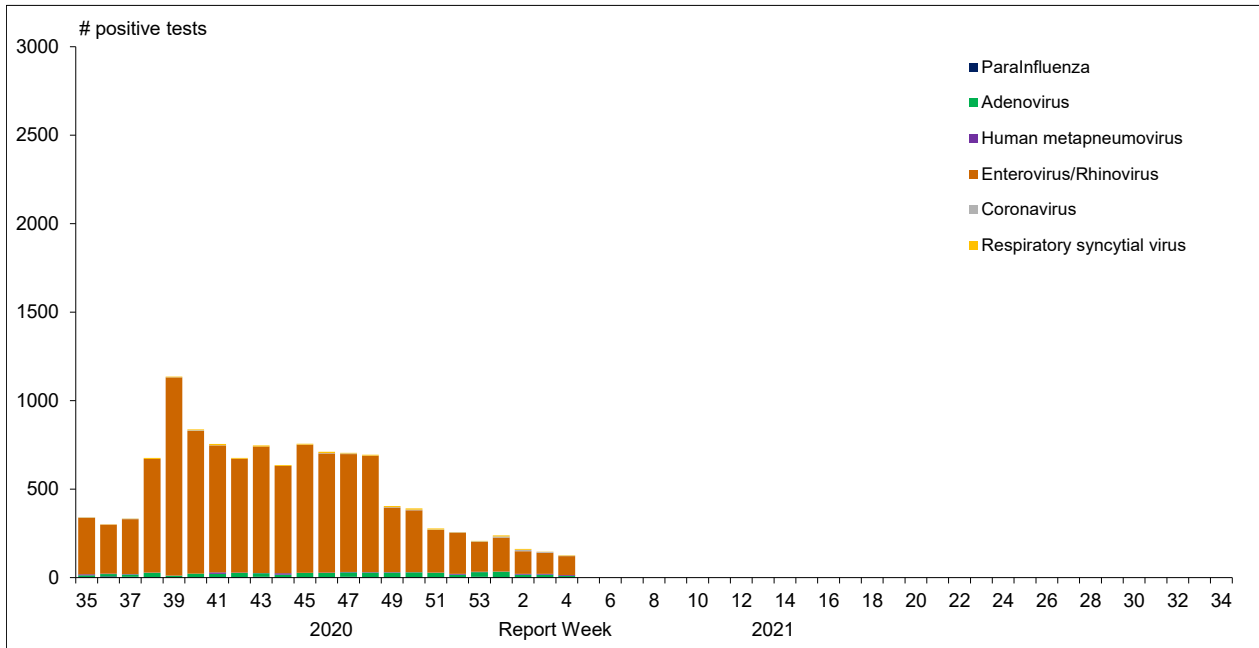


Figure 2 : Positive Influenza Tests (%) in Canada by Region by Week of Report

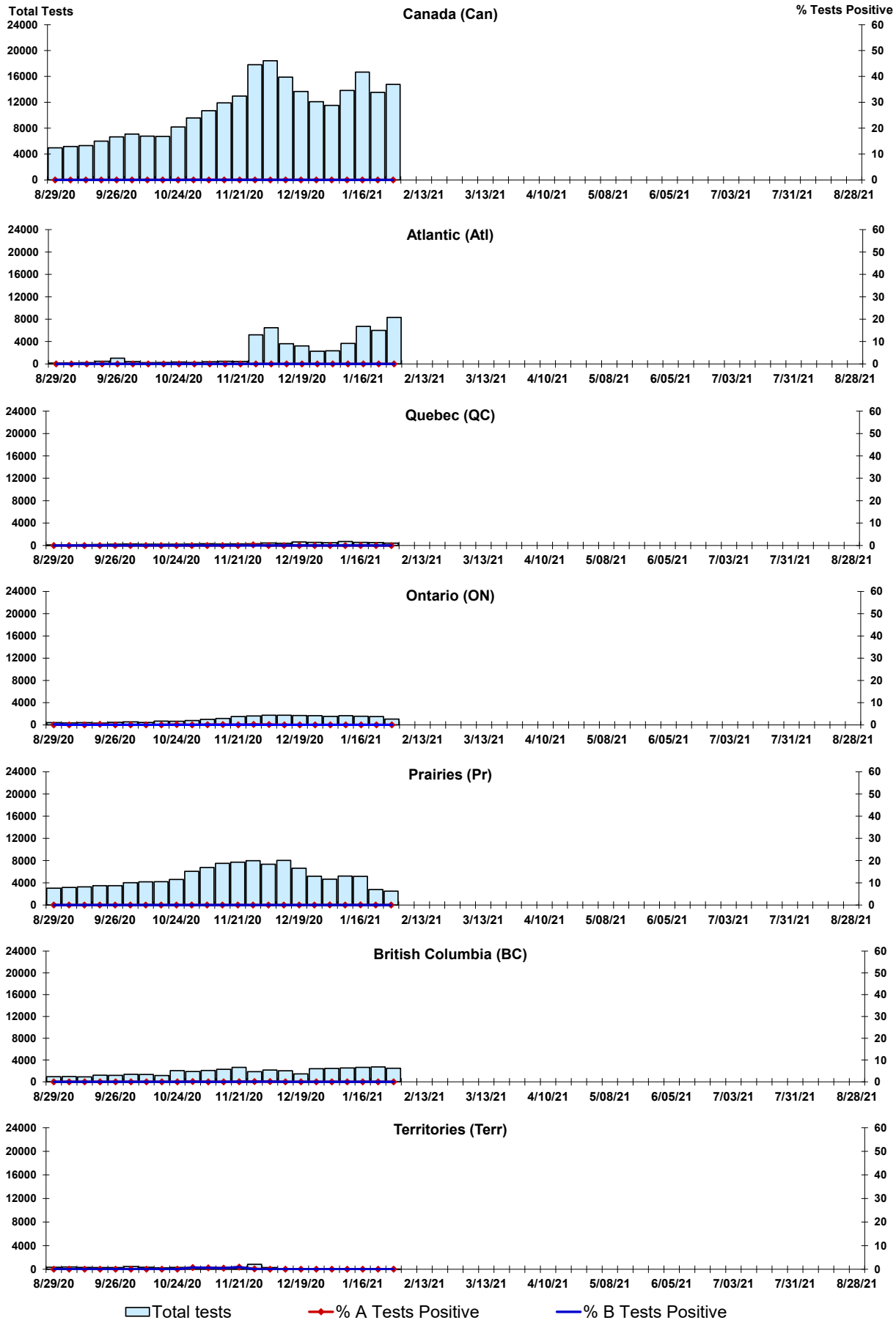


Figure 3: Positive Respiratory syncytial virus (RSV) Tests (%) in Canada by Region by Week of Report

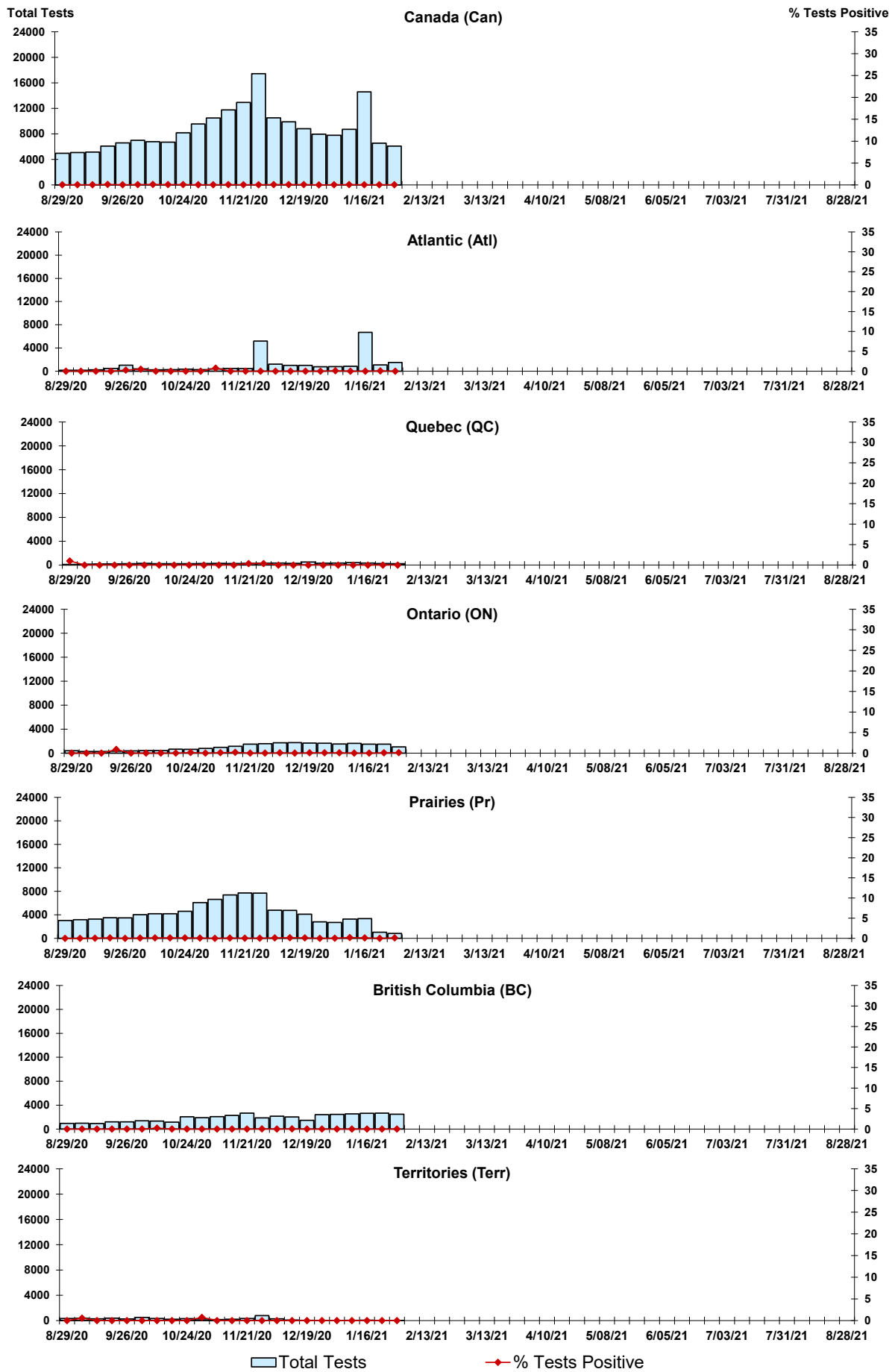
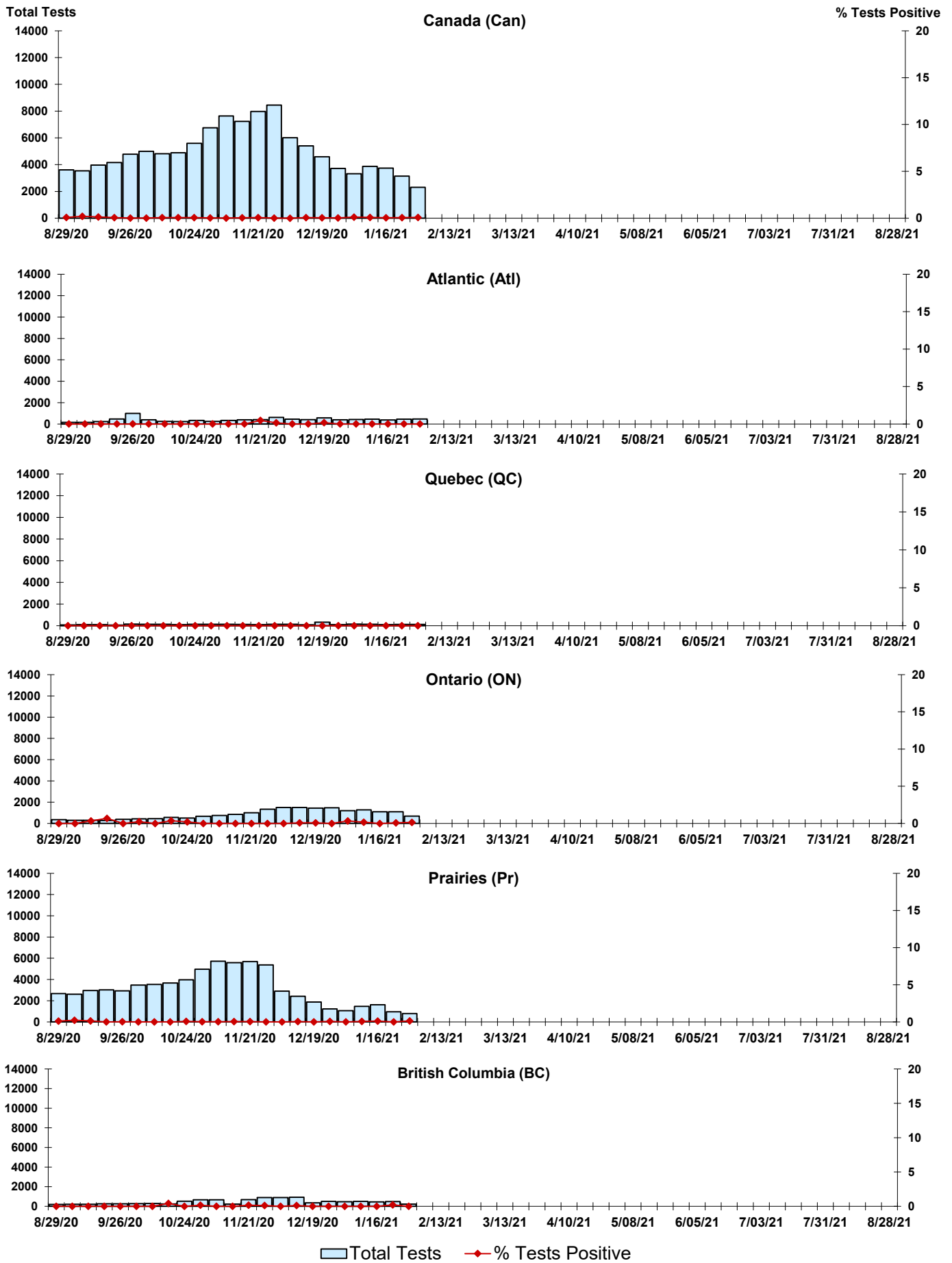


Figure 4: Positive Parainfluenza (PIV) Tests (%) in Canada by Region by Week of Report



Legend: Total Tests (light blue bar), % Tests Positive (red diamond)

Figure 5: Positive Adenovirus (adeno) Tests (%) in Canada by Region by Week of Report

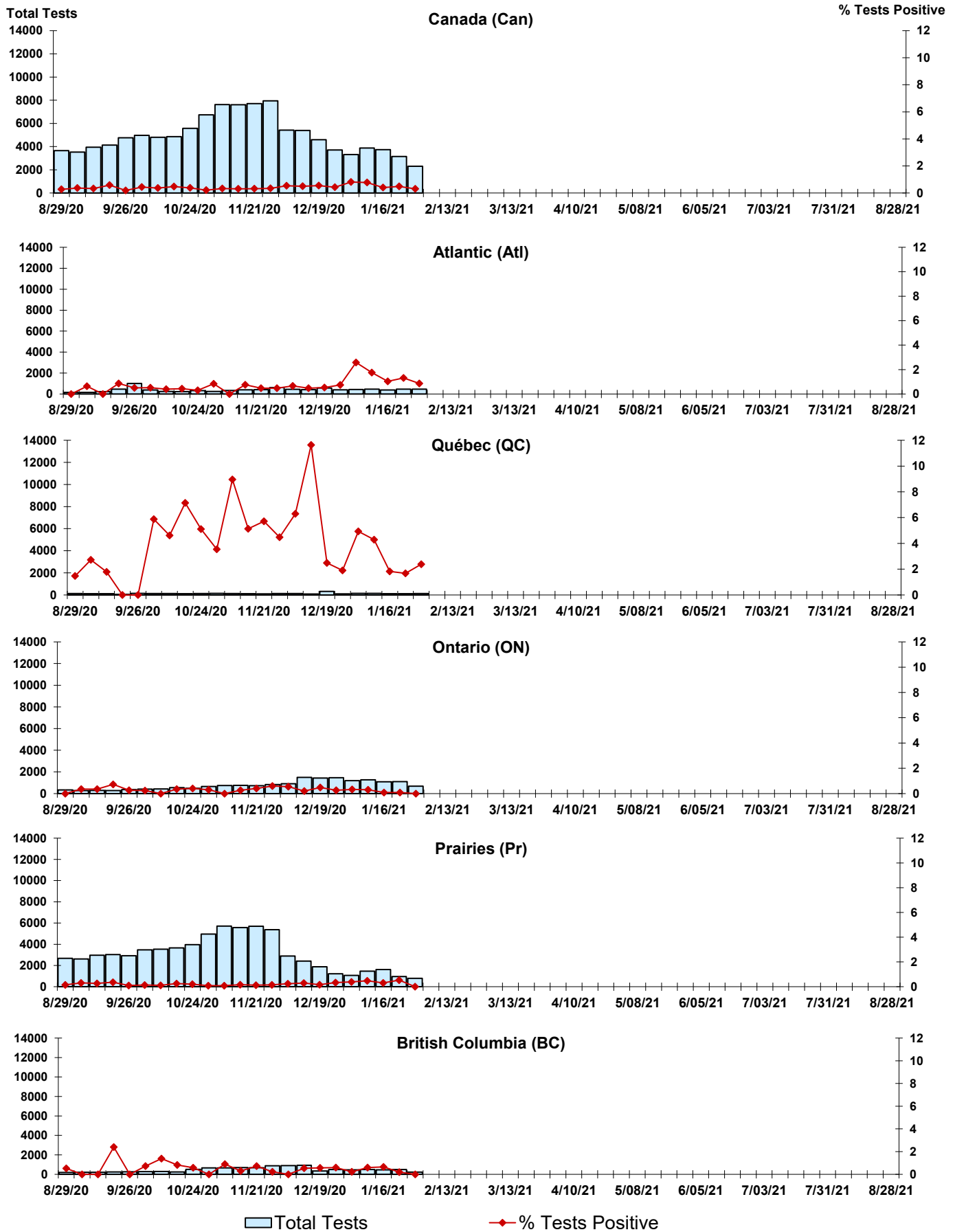


Figure 6: Positive human metapneumovirus (hMPV) Tests (%) in Canada by Region by Week of Report

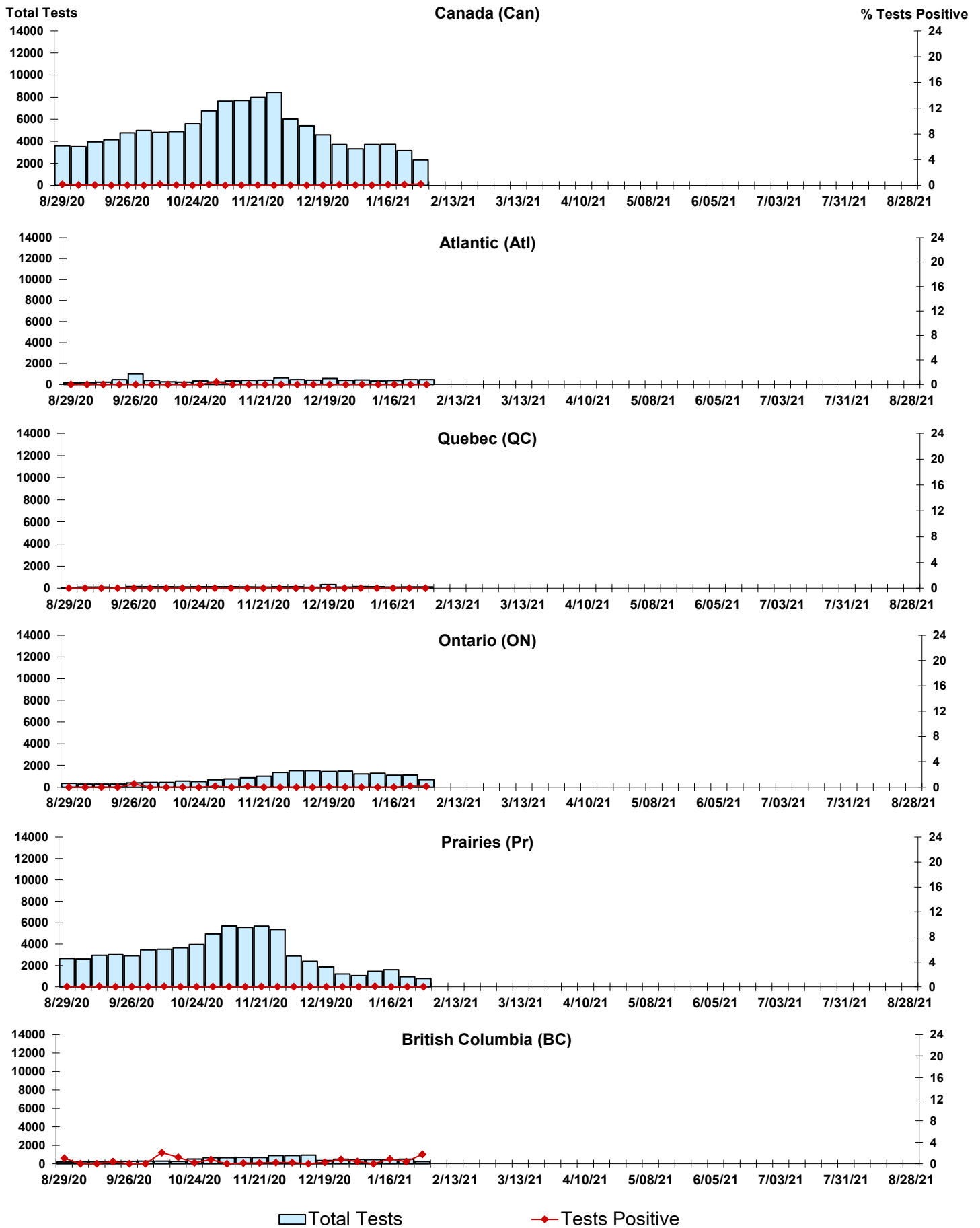


Figure 7: Positive Enterovirus/Rhinovirus (entero/rhino) Tests (%) in Canada by Region by Week of Report

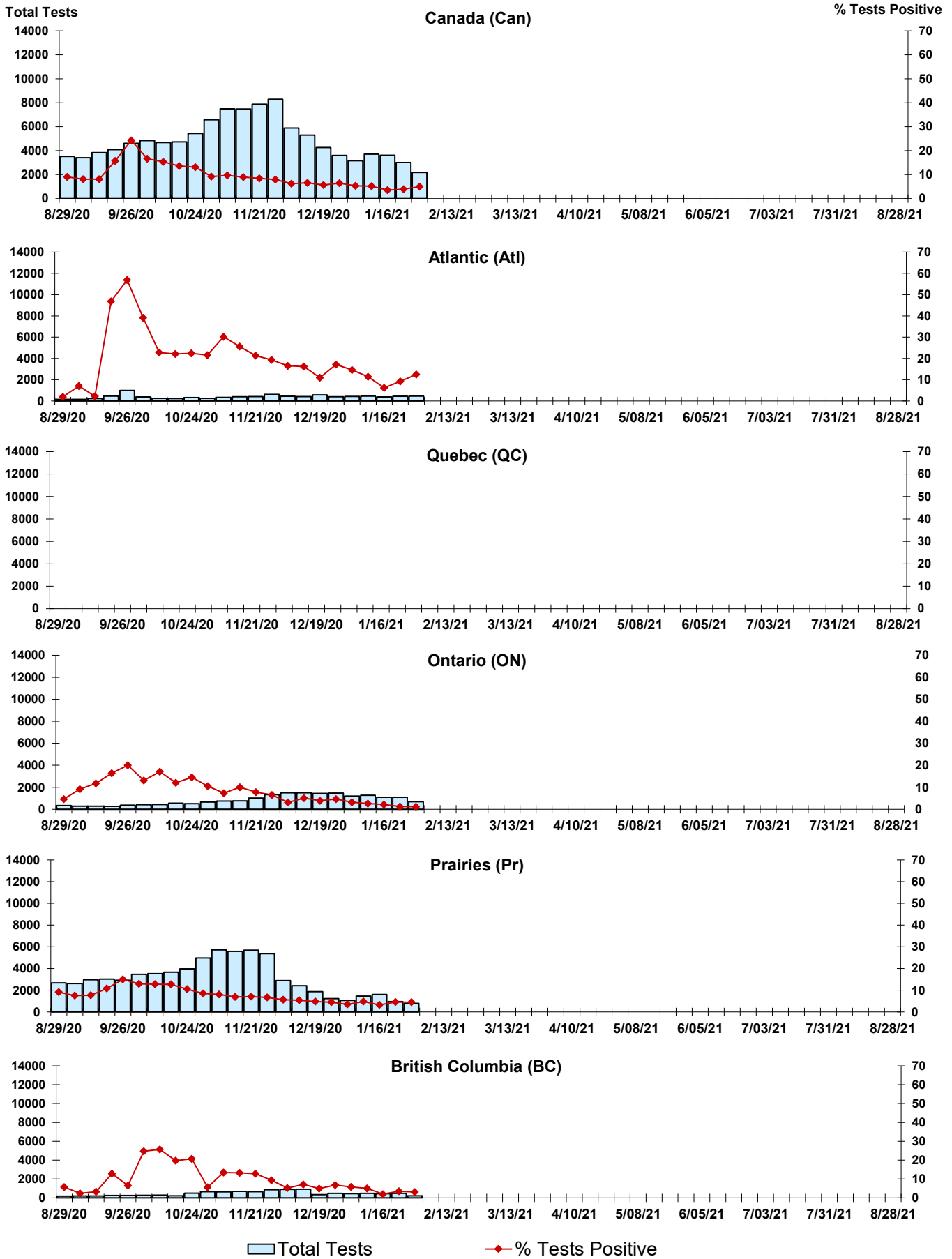
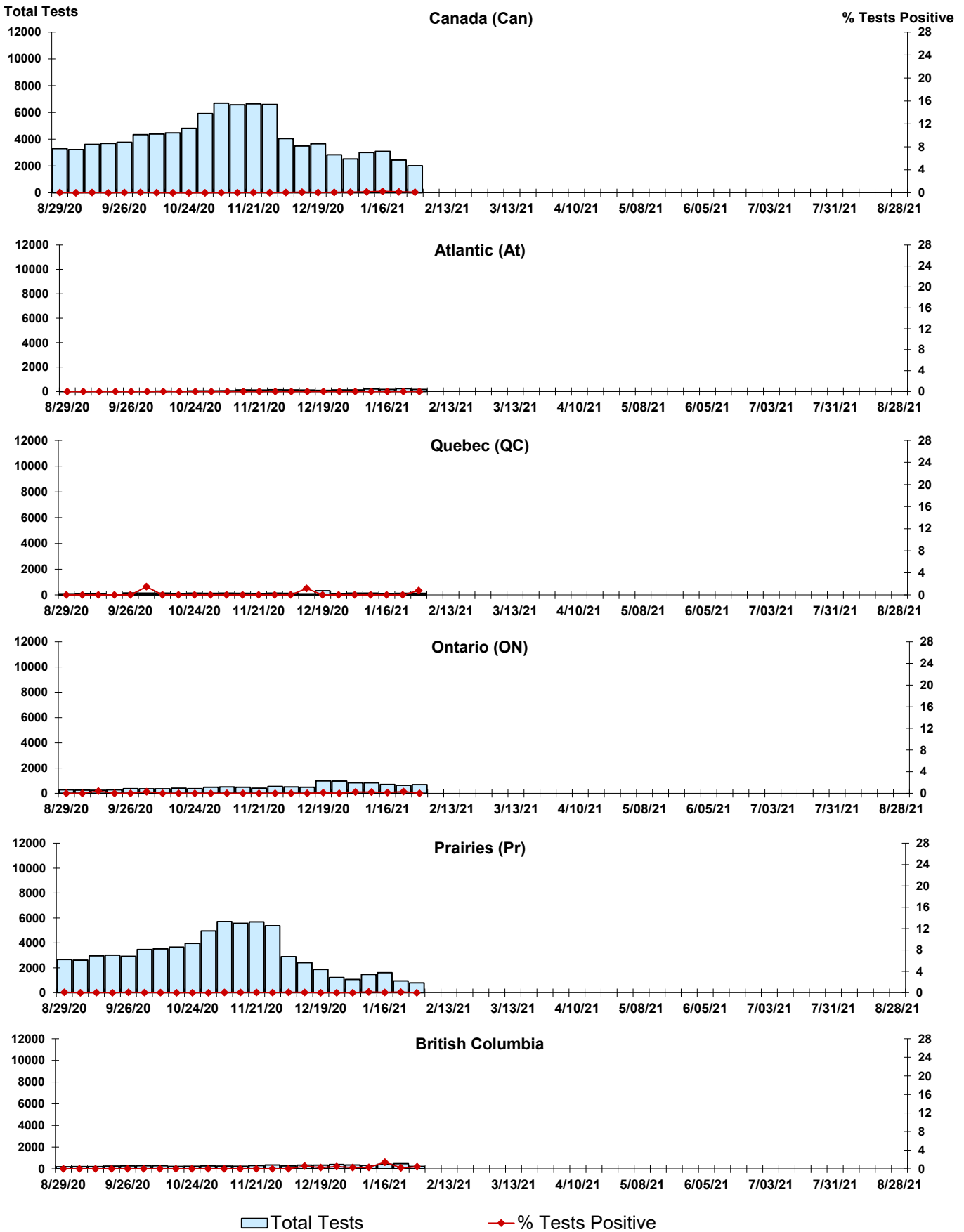


Figure 8: Positive Coronavirus (coron) Tests (%) in Canada by Region by Week of Report



Abbreviations:

A(H1N1)pdm09: Influenza A(H1N1)pdm09

A(H3): Influenza A(H3N2)

A (UnS): Influenza A (Unsubtyped)

Adeno: Adenovirus

CHEO: Children's Hospital of Eastern Ontario

Coron: Coronavirus

Entero: Enterovirus

hMPV: human metapneumovirus

HSC: Health Sciences Centre

N.A.: Not Applicable

P.H.L.: Public Health Laboratory

P.H.O.L.: Public Health Ontario Laboratory

PIV: Parainfluenza

Rhino: Rhinovirus

RSV: Respiratory syncytial virus

UHN: University Health Network

Notes:

The data in the RVDSS report represent surveillance data available at the time of writing. Missing data are denoted by N.A.

Specimens from Yukon (YT), Northwest Territories (NT) and Nunavut (NU) are sent to reference laboratories in other provinces. Results reported for the Territories reflect the number of specimens that are identified as originating from YT, NT or NU.

Delays in the reporting of data may cause data to change retrospectively.

Due to reporting delays, the sum of weekly report totals do not add up to cumulative totals.