

Respiratory Virus Report, Week 7 - ending February 20, 2021

The Respiratory Virus Detection Surveillance System collects data from select laboratories across Canada on the number of tests performed and the number of tests positive for influenza and other respiratory viruses. Data are reported on a weekly basis year-round to the Centre for Immunization and Respiratory Infectious Diseases (CIRID), Public Health Agency of Canada. These data are also summarized in the weekly FluWatch report.

In this Respiratory Virus Report, the number of detections of coronavirus reflects only seasonal human coronaviruses, not the novel pandemic coronavirus (SARS-CoV2) that causes COVID-19. For information on COVID-19, see the [Coronavirus disease \(COVID-19\): Outbreak](#)

Table 1: Respiratory Virus Detections/Isolations for the week ending February 20, 2021 (Reporting Week 202107)

Reporting Laboratory	Flu Tested	A(H1N1)pdm09 Positive	A(H3) Positive	A(UnS) Positive	Total Flu A Positive	Total Flu B Positive	RSV Tested	RSV Positive	PIV Tested	PIV 1 Positive	PIV 2 Positive	PIV 3 Positive	PIV 4 Positive	Other PIV Positive	Adeno Tested	Adeno Positive	hMPV Tested	hMPV Positive	Entero/Rhino Tested	Entero/Rhino Positive	Coron Tested	Coron Positive
Newfoundland	30	0	0	0	0	0	30	0	30	0	0	0	0	0	35	0	30	0	30	2	N.A.	N.A.
Prince Edward Island	165	0	0	0	0	0	165	0	165	0	0	0	0	0	165	1	165	0	165	11	165	0
Nova Scotia	320	0	0	0	0	0	320	0	20	0	0	0	0	0	20	0	20	0	20	1	20	0
New Brunswick	575	0	0	0	0	0	267	0	13	0	0	0	0	0	13	0	13	0	13	0	13	0
Atlantic	1090	0	0	0	0	0	782	0	228	0	0	0	0	0	233	1	228	0	228	14	198	0
Région Nord-Est	136	0	0	0	0	0	29	0	0	0	0	0	0	0	0	0	0	0	N.A.	N.A.	0	0
Québec-Chaudière-Appalaches	26	0	0	0	0	0	25	0	15	0	0	0	0	0	15	1	15	0	N.A.	N.A.	15	1
Centre-du-Québec	21	0	0	0	0	0	21	0	10	0	0	0	0	0	10	1	10	0	N.A.	N.A.	10	0
Montréal-Laval	252	0	0	0	0	0	160	1	136	0	0	0	0	0	136	9	136	0	N.A.	N.A.	136	1
Ouest du Québec	81	0	0	0	0	0	81	0	0	0	0	0	0	0	0	0	0	0	N.A.	N.A.	0	0
Montérégie	14	0	0	0	0	0	14	0	0	0	0	0	0	0	0	0	0	0	N.A.	N.A.	0	0
Province of Québec	530	0	0	0	0	0	330	1	161	0	0	0	0	0	161	11	161	0	N.A.	N.A.	161	2
P.H.O.L. - Ottawa	8	0	0	0	0	0	8	0	7	0	0	0	0	0	7	0	7	0	7	0	7	0
CHEO - Ottawa	110	0	0	0	0	0	110	0	14	0	0	0	0	0	14	0	14	0	14	2	14	0
P.H.O.L. - Kingston	11	0	0	0	0	0	11	0	3	0	0	0	0	0	3	0	3	0	3	0	3	0
UHN / Mount Sinai Hospital	506	0	0	0	0	0	506	0	506	1	0	1	0	0	506	0	506	0	506	2	506	0
P.H.O.L. - Toronto	127	0	0	0	0	0	127	0	72	0	0	0	0	0	72	0	72	0	72	0	72	0
Sick Kids Hospital - Toronto	N.A.	N.A.	N.A.	N.A.	N.A.	N.A.	N.A.	N.A.	N.A.	N.A.	N.A.	N.A.	N.A.	N.A.	N.A.	N.A.	N.A.	N.A.	N.A.	N.A.	N.A.	N.A.
Sunnybrook & Women's College HSC	N.A.	N.A.	N.A.	N.A.	N.A.	N.A.	N.A.	N.A.	N.A.	N.A.	N.A.	N.A.	N.A.	N.A.	N.A.	N.A.	N.A.	N.A.	N.A.	N.A.	N.A.	N.A.
P.H.O.L. - Sault Ste. Marie	1	0	0	0	0	0	1	0	0	0	0	0	0	0	0	0	0	0	0	0	0	0
P.H.O.L. - Timmins	2	0	0	0	0	0	2	0	0	0	0	0	0	0	0	0	0	0	0	0	0	0
St. Joseph's - London	N.A.	N.A.	N.A.	N.A.	N.A.	N.A.	N.A.	N.A.	N.A.	N.A.	N.A.	N.A.	N.A.	N.A.	N.A.	N.A.	N.A.	N.A.	N.A.	N.A.	N.A.	N.A.
P.H.O.L. - London	31	0	0	0	0	0	31	0	11	0	0	0	0	0	11	0	11	0	11	0	11	0
P.H.O.L. - Orillia	6	0	0	0	0	0	6	0	0	0	0	0	0	0	0	0	0	0	0	0	0	0
P.H.O.L. - Thunder Bay	2	0	0	0	0	0	2	0	2	0	0	0	0	0	2	0	2	0	2	0	2	0
P.H.O.L. - Sudbury	9	0	0	0	0	0	9	0	7	0	0	0	0	0	7	0	7	0	7	0	7	0
P.H.O.L. - Hamilton	21	0	0	0	0	0	21	0	14	0	0	0	0	0	14	0	14	0	14	0	14	0
P.H.O.L. - Peterborough	9	0	0	0	0	0	9	0	0	0	0	0	0	0	0	0	0	0	0	0	0	0
St. Joseph's - Hamilton	N.A.	N.A.	N.A.	N.A.	N.A.	N.A.	N.A.	N.A.	N.A.	N.A.	N.A.	N.A.	N.A.	N.A.	N.A.	N.A.	N.A.	N.A.	N.A.	N.A.	N.A.	N.A.
Province of Ontario	843	0	0	0	0	0	843	0	636	1	0	1	0	0	636	0	636	0	636	4	636	0
Province of Manitoba	1583	0	0	0	0	0	1583	3	48	0	0	0	0	0	48	0	91	0	48	0	91	0
Province of Saskatchewan	10039	0	0	0	0	0	803	0	37	0	0	0	0	0	37	0	37	0	37	1	37	0
Province of Alberta	2264	0	0	1	1	0	553	0	553	0	0	0	0	0	553	1	553	0	553	45	553	1
Prairies	13886	0	0	1	1	0	2939	3	638	0	0	0	0	0	638	1	681	0	638	46	681	1
British Columbia	3301	0	0	0	0	1	3285	0	364	0	0	0	1	0	364	2	364	1	359	24	349	0
Yukon	102	0	0	0	0	0	102	0	N.A.	N.A.	N.A.	N.A.	N.A.	N.A.	N.A.	N.A.	N.A.	N.A.	N.A.	N.A.	N.A.	N.A.
Northwest Territories	12	0	0	0	0	0	6	0	6	0	0	0	0	0	6	0	6	0	6	0	6	0
Nunavut	1	0	0	0	0	0	1	0	1	0	0	0	0	0	1	0	1	0	1	1	1	0
Territories	115	0	0	0	0	0	109	0	7	0	0	0	0	0	7	0	7	0	7	1	7	0
CANADA	19765	0	0	1	1	1	8288	4	2034	1	0	1	1	0	2039	15	2077	1	1868	89	2032	3

The data in the RVDSS report represent surveillance data available at the time of writing. Missing data are denoted by N.A.

Specimens from Yukon (YT), Northwest Territories (NT) and Nunavut (NU) are sent to reference laboratories in other provinces and reported results reflect specimens identified as originating from YT, NT or NU.

Results from British Columbia comprise of specimens from the following sites: BC Children's and Women's Hospital, Fraser Health Medical Microbiology Laboratory, Island Health, Providence Health Care, Powell River Hospital, St. Paul's Hospital, Vancouver General Hospital, Victoria General Hospital, BCCDC Public Health Laboratory, Interior Health Authority sites and Northern Health Authority sites.

Delays in the reporting of data may cause data to change retrospectively.

For BC, only data from subtyped influenza A specimens are included in the weekly number of influenza detections and so the sum of A(H1N1)pdm09, A(H3), and A(UnS) positive results may not equal the sum of total Flu A positive results.

Table 2: Respiratory Virus Detections/Isolations for the period August 23, 2020 - February 20, 2021 (Reporting Weeks 202035-202107)

Reporting Laboratory	Flu Tested	A(H1N1)pdm09 Positive	A(H3) Positive	A(UnS) Positive	Total Flu A Positive	Total Flu B Positive	RSV Tested	RSV Positive	PIV Tested	PIV 1 Positive	PIV 2 Positive	PIV 3 Positive	PIV 4 Positive	Other PIV Positive	Adeno Tested	Adeno Positive	hMPV Tested	hMPV Positive	Entero/Rhino Tested	Entero/Rhino Positive	Coron Tested	Coron Positive
Newfoundland	7698	0	0	1	1	0	7698	10	7698	1	0	1	0	0	7707	39	7577	1	7698	1910	N.A.	N.A.
Prince Edward Island	1922	0	0	0	0	0	1922	3	1918	2	0	0	0	0	1918	26	1918	0	1918	219	1918	0
Nova Scotia	1422	0	0	0	0	0	1425	0	367	0	0	0	0	0	367	6	367	0	367	56	367	0
New Brunswick	47979	0	0	0	0	1	16480	0	518	0	0	0	0	0	509	7	509	0	509	45	464	0
Atlantic	59021	0	0	1	1	1	27525	13	10501	3	0	1	0	0	10501	78	10371	1	10492	2230	2749	0
Région Nord-Est	2458	0	0	0	0	0	773	1	0	0	0	0	0	0	0	0	0	0	N.A.	N.A.	0	0
Québec-Chaudière-Appalaches	611	0	0	1	1	0	666	0	405	0	0	0	0	0	407	21	402	0	N.A.	N.A.	385	3
Centre-du-Québec	625	0	0	0	0	0	634	1	202	0	0	0	0	0	200	14	202	0	N.A.	N.A.	199	0
Montréal-Laval	4839	0	0	0	0	0	3883	4	2714	0	0	0	0	0	2768	100	2700	0	N.A.	N.A.	2700	6
Ouest du Québec	829	0	0	0	0	0	775	0	0	0	0	0	0	0	0	0	0	0	N.A.	N.A.	0	0
Montérégie	16	0	0	0	0	0	16	0	0	0	0	0	0	0	0	0	0	0	N.A.	N.A.	0	0
Province of Québec	9378	0	0	1	1	0	6747	6	3321	0	0	0	0	0	3375	135	3304	0	N.A.	N.A.	3284	9
P.H.O.L. - Ottawa	393	0	0	0	0	0	393	1	344	0	0	0	0	0	344	0	343	0	344	20	343	0
CHEO - Ottawa	3647	0	0	1	1	1	3244	4	541	0	0	0	0	0	541	10	541	1	541	59	541	0
P.H.O.L. - Kingston	683	0	0	1	1	0	683	0	458	0	0	0	0	0	458	3	452	0	458	102	452	0
UHN / Mount Sinai Hospital	7600	2	0	1	3	1	7531	5	7221	2	2	3	8	0	5595	7	7181	8	6978	81	5017	5
P.H.O.L. - Toronto	4429	0	0	0	0	0	4426	2	4057	0	0	0	0	2	4058	11	4056	0	4057	143	4056	4
Sick Kids Hospital - Toronto	854	0	0	0	0	0	0	0	854	0	0	0	0	0	854	12	854	0	854	88	854	0
Sunnybrook & Women's College HSC	0	0	0	0	0	0	0	0	0	0	0	0	0	0	0	0	0	0	0	0	0	0
P.H.O.L. - Sault Ste. Marie	111	0	0	2	2	0	109	0	82	0	0	0	0	0	82	0	82	0	82	6	82	0
P.H.O.L. - Timmins	577	0	0	0	0	0	577	0	144	0	0	0	0	0	144	0	143	0	144	30	143	0
St. Joseph's - London	218	0	0	0	0	0	218	0	55	0	0	0	0	0	55	0	55	0	91	8	36	0
P.H.O.L. - London	1607	1	0	5	6	2	1597	0	1187	0	0	0	0	2	1187	2	1182	0	1187	124	1182	3
P.H.O.L. - Orillia	300	0	0	1	1	0	298	0	189	0	0	0	0	0	189	1	189	0	189	12	189	0
P.H.O.L. - Thunder Bay	354	0	0	0	0	0	354	0	343	0	0	0	0	0	344	2	343	0	343	131	343	0
P.H.O.L. - Sudbury	376	0	0	0	0	0	374	0	310	0	0	0	0	0	310	1	310	0	310	27	310	0
P.H.O.L. - Hamilton	1296	0	0	0	0	0	1245	1	1058	0	0	0	0	0	1058	2	1058	0	1058	93	1058	0
P.H.O.L. - Peterborough	371	0	0	1	1	0	325	0	246	0	0	0	0	0	246	0	246	0	246	20	246	0
St. Joseph's - Hamilton	6446	0	0	0	0	0	6446	1	6446	0	0	0	0	0	6446	17	6446	0	6446	377	0	0
Province of Ontario	29262	3	0	12	15	4	27820	14	23535	2	2	3	8	4	21911	68	23481	9	23328	1321	14852	12
Manitoba	33142	0	0	0	0	1	33132	68	2372	0	1	1	0	0	2372	17	2289	1	2372	120	2289	3
Province of Saskatchewan	25315	0	0	0	0	0	5996	3	1423	0	0	1	1	0	1423	9	1423	0	1423	144	1423	2
Province of Alberta	94735	4	0	6	10	0	69222	0	69222	2	18	2	5	0	69222	118	69222	11	69222	5792	69222	20
Prairies	153192	4	0	6	10	1	108350	71	73017	2	19	4	6	0	73017	144	72934	12	73017	6056	72934	25
British Columbia	54494	3	8	0	7	8	54354	5	11927	0	2	0	7	0	12476	60	12321	52	12175	1108	8248	17
Yukon	4220	0	0	8	8	7	4220	4	N.A.	N.A.	N.A.	N.A.	N.A.	N.A.	N.A.	N.A.	N.A.	N.A.	N.A.	N.A.	N.A.	N.A.
Northwest Territories	1053	0	0	0	0	0	1029	0	1029	0	0	0	1	0	1029	9	1029	1	1029	312	1029	0
Nunavut	1093	0	0	0	0	0	1082	0	1082	3	1	0	0	0	1082	25	1082	5	1082	280	182	0
Territories	6366	0	0	8	8	7	6331	4	2111	3	1	0	1	0	2111	34	2111	6	2111	592	1211	0
CANADA	311713	10	8	28	42	21	231127	113	124412	10	24	8	22	4	123391	519	124522	80	121123	11307	103278	63

The data in the RVDSS report represent surveillance data available at the time of writing. Missing data are denoted by N.A.

Specimens from YT, NT and NU are sent to reference laboratories in other provinces and reported results reflect specimens identified as originating from YT, NT or NU.

Results from British Columbia comprise of specimens from the following sites: BC Children's and Women's Hospital, Children's and Women's Hospital Laboratory, Fraser Health Medical Microbiology Laboratory, Island Health, Providence Health Care, Powell River Hospital, St. Paul's Hospital, Vancouver General Hospital, Victoria General Hospital, BCCDC Public Health Laboratory, Interior Health Authority sites and Northern Health Authority sites.

Delays in the reporting of data may cause data to change retrospectively.

Due to reporting delays, the sum of weekly report totals do not add up to cumulative totals.

For BC, only data from subtyped influenza A specimens are included in the weekly number of influenza detections and so the sum of A(H1N1)pdm09, A(H3), and A(UnS) positive results may not equal the sum of total Flu A positive results. □

Figure 1: Number positive laboratory tests for other respiratory viruses by report week, Canada, 2020-21

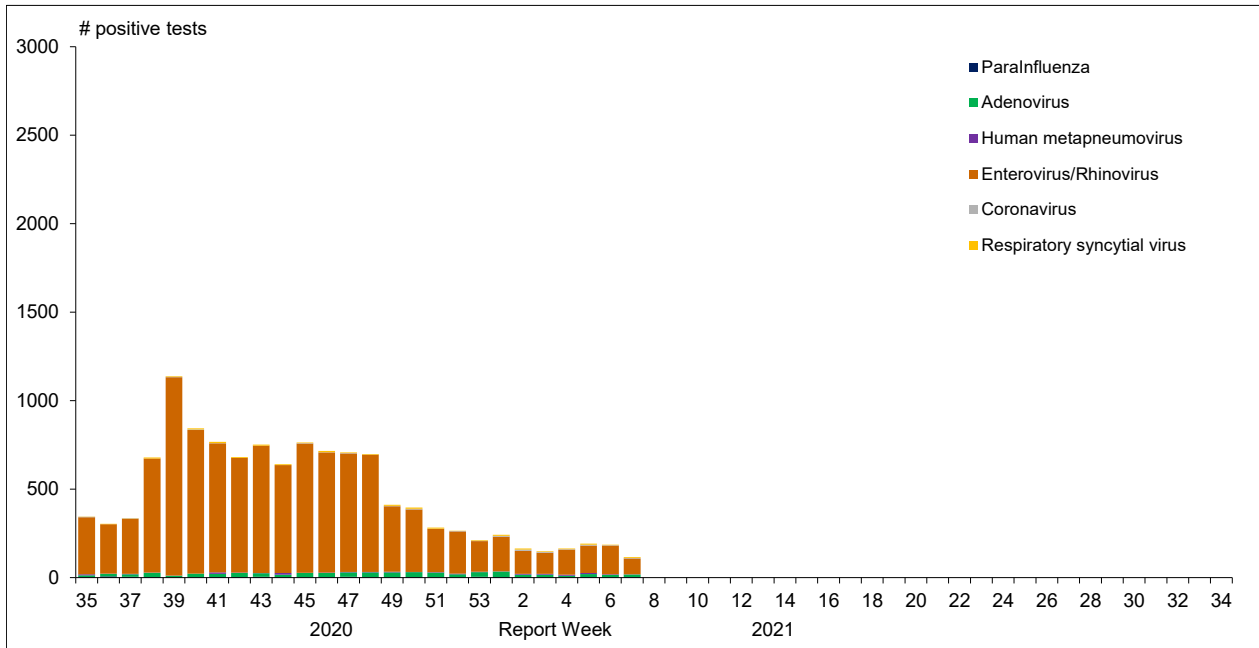


Figure 2 : Positive Influenza Tests (%) in Canada by Region by Week of Report

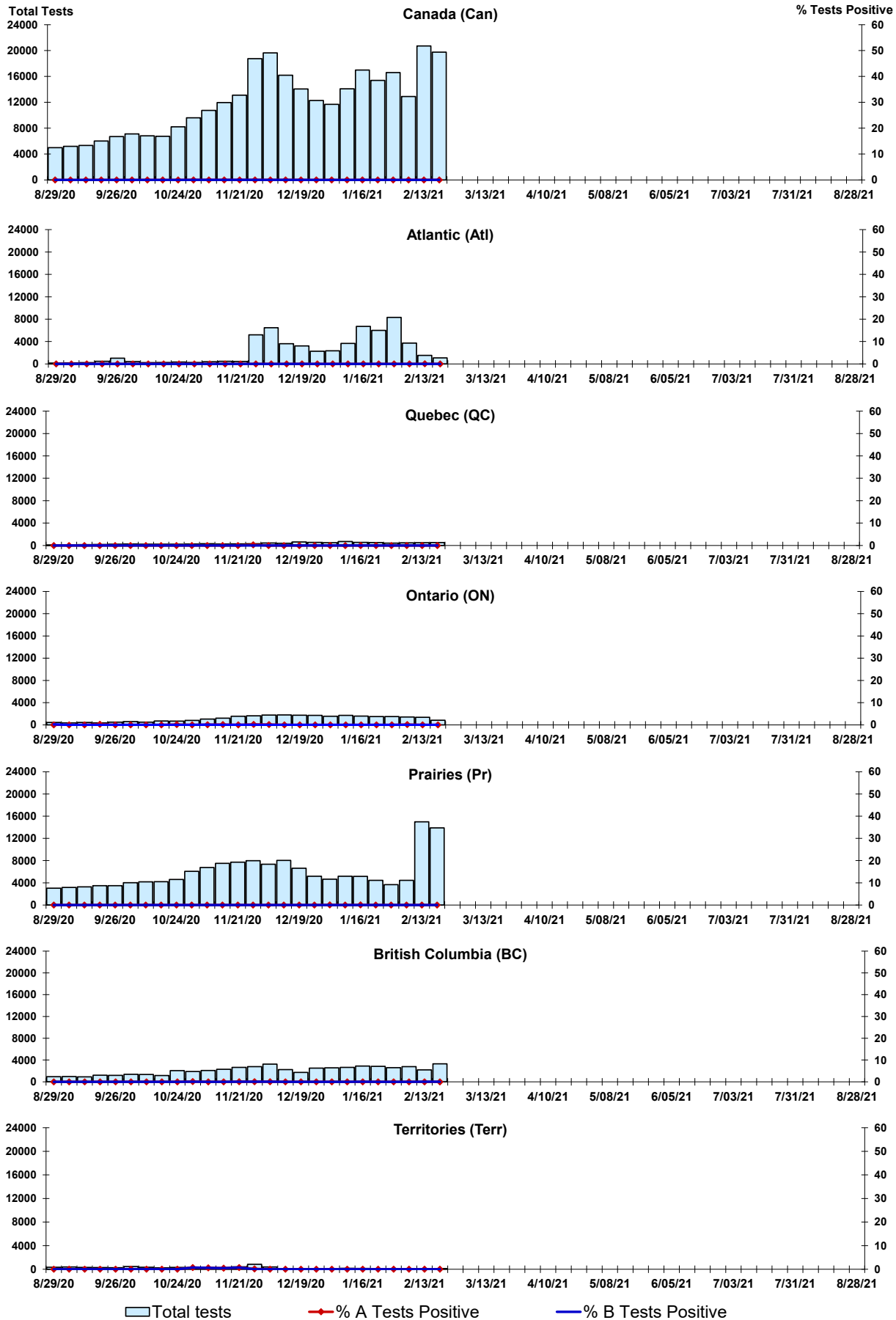


Figure 3: Positive Respiratory syncytial virus (RSV) Tests (%) in Canada by Region by Week of Report

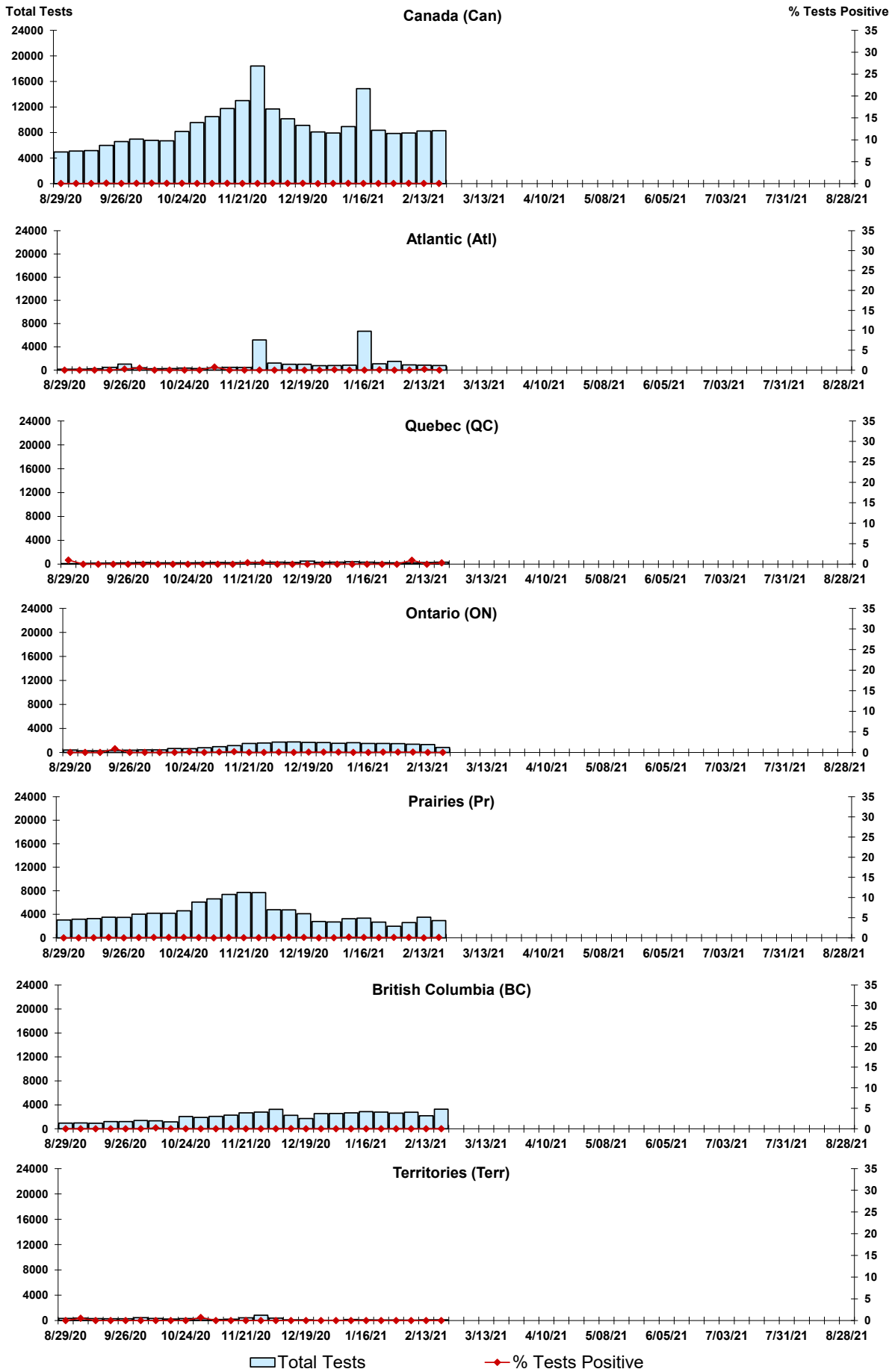
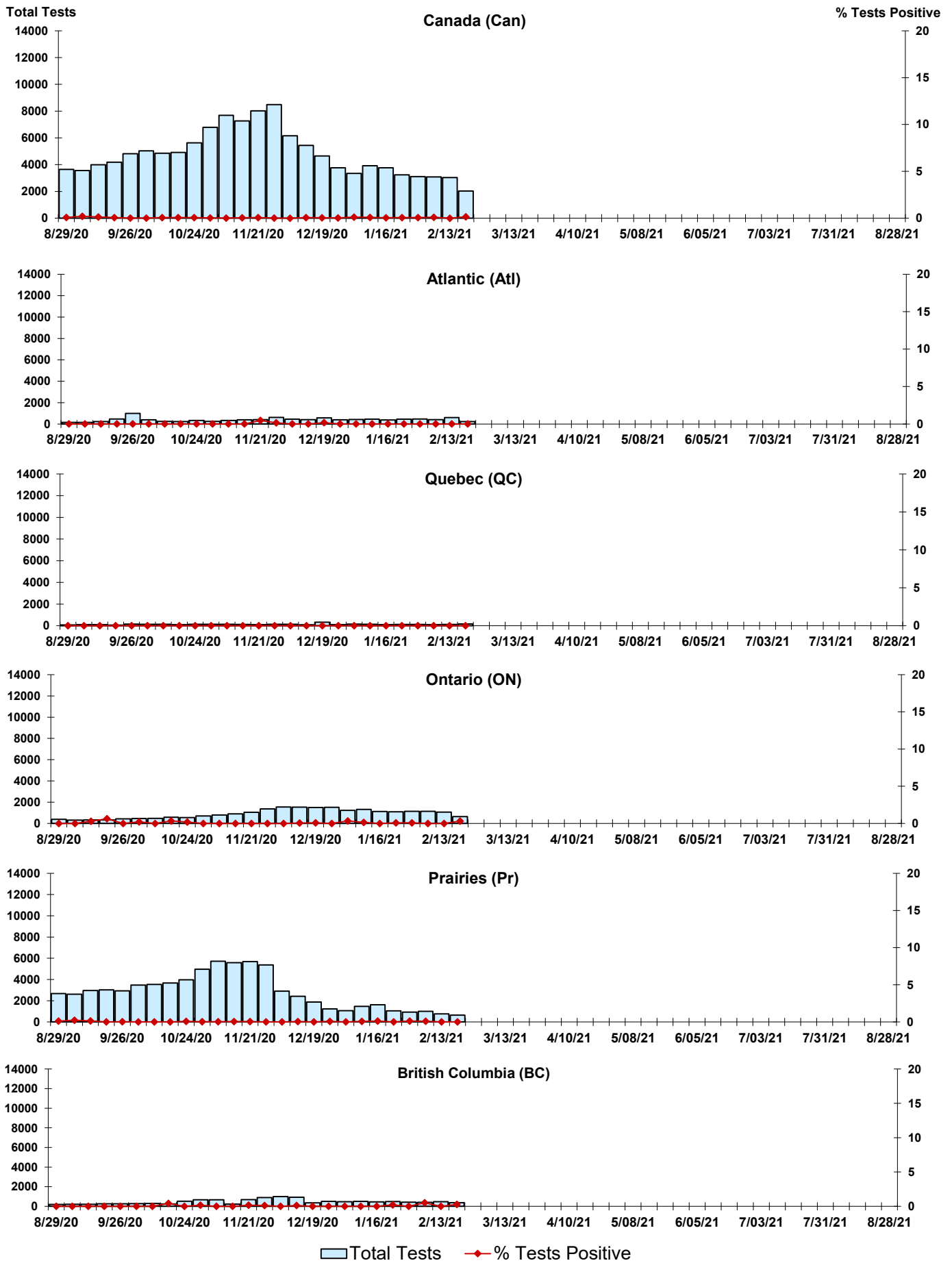


Figure 4: Positive Parainfluenza (PIV) Tests (%) in Canada by Region by Week of Report



Legend: Total Tests (light blue bar), % Tests Positive (red diamond)

Figure 5: Positive Adenovirus (adeno) Tests (%) in Canada by Region by Week of Report

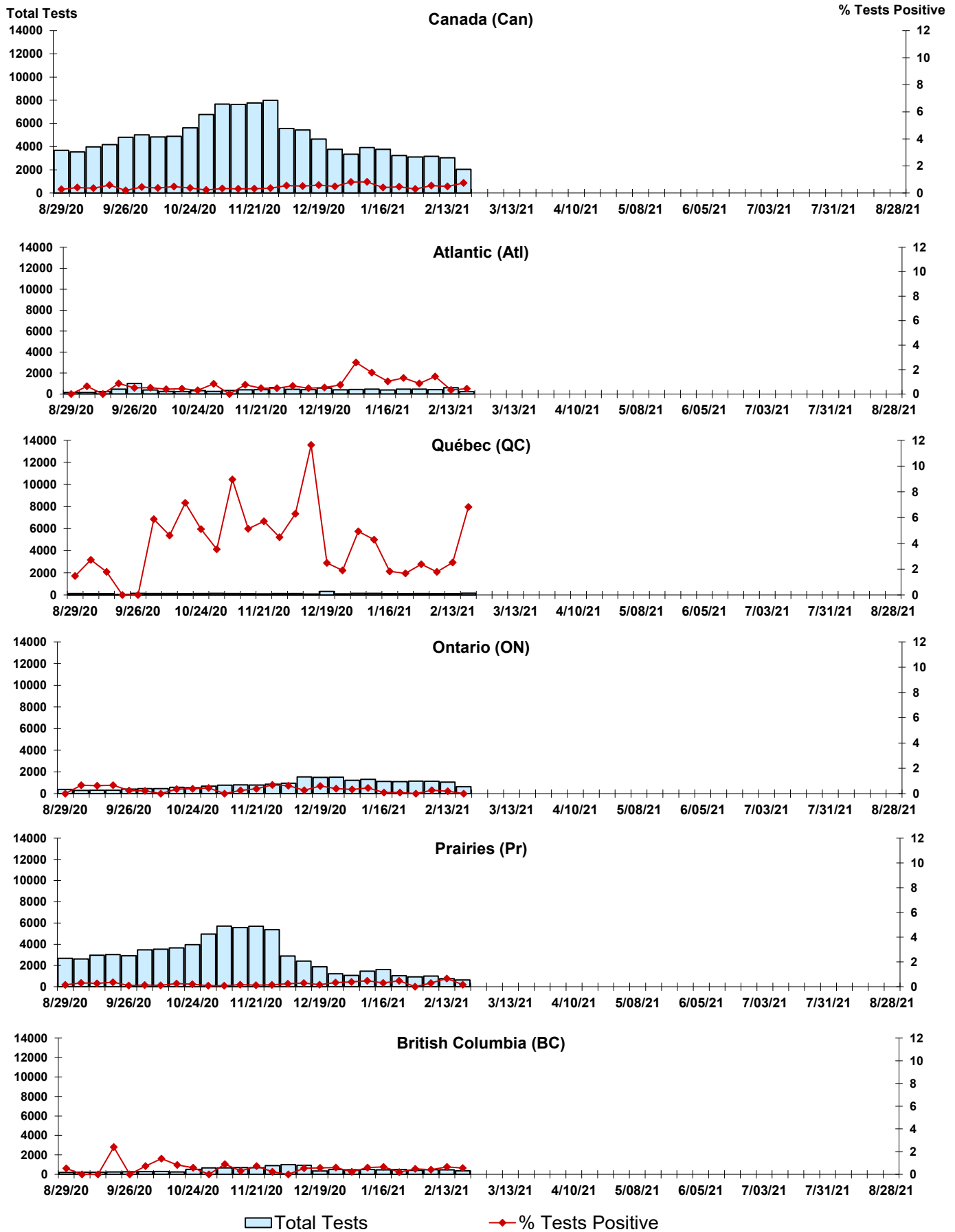


Figure 6: Positive human metapneumovirus (hMPV) Tests (%) in Canada by Region by Week of Report

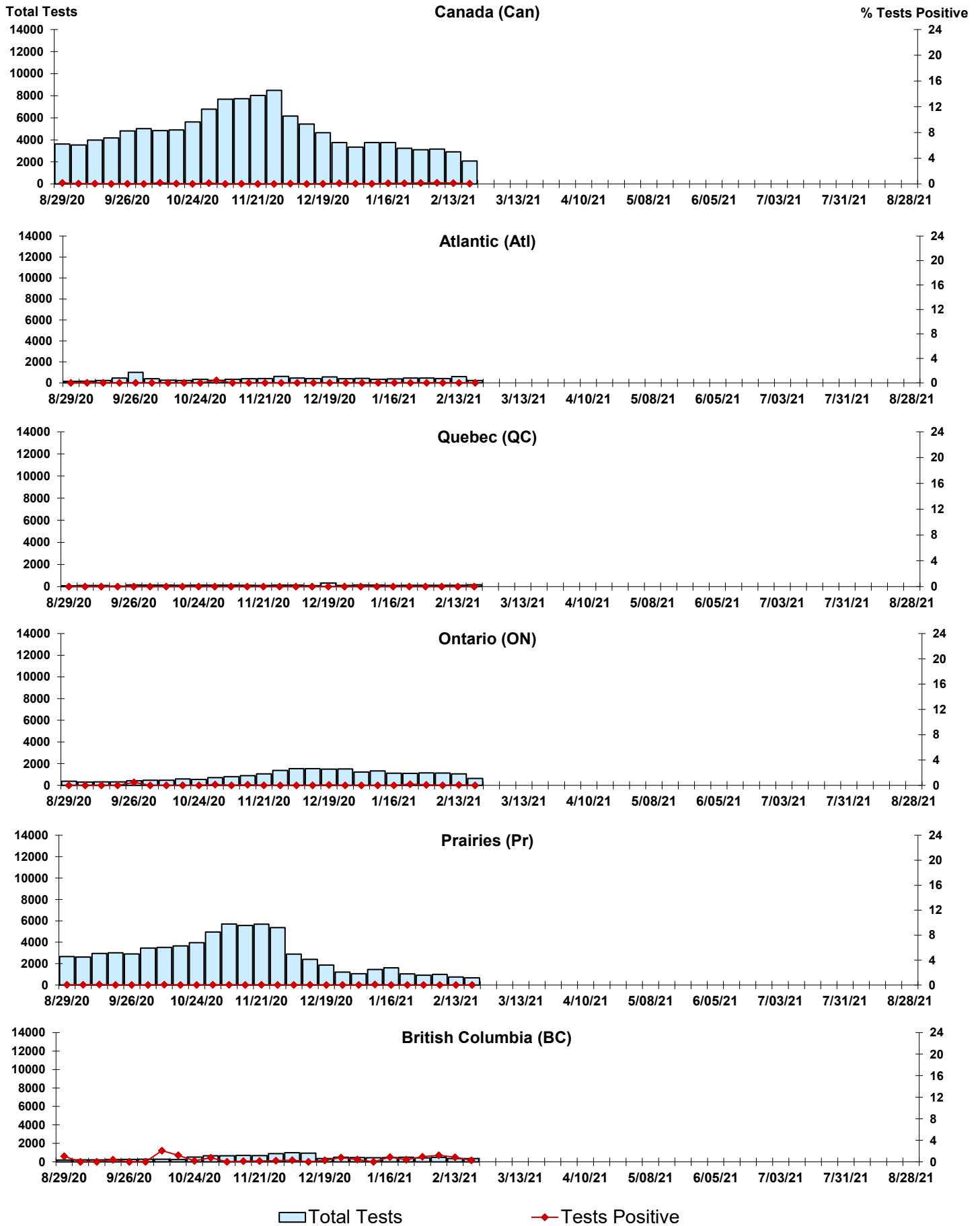


Figure 7: Positive Enterovirus/Rhinovirus (entero/rhino) Tests (%) in Canada by Region by Week of Report

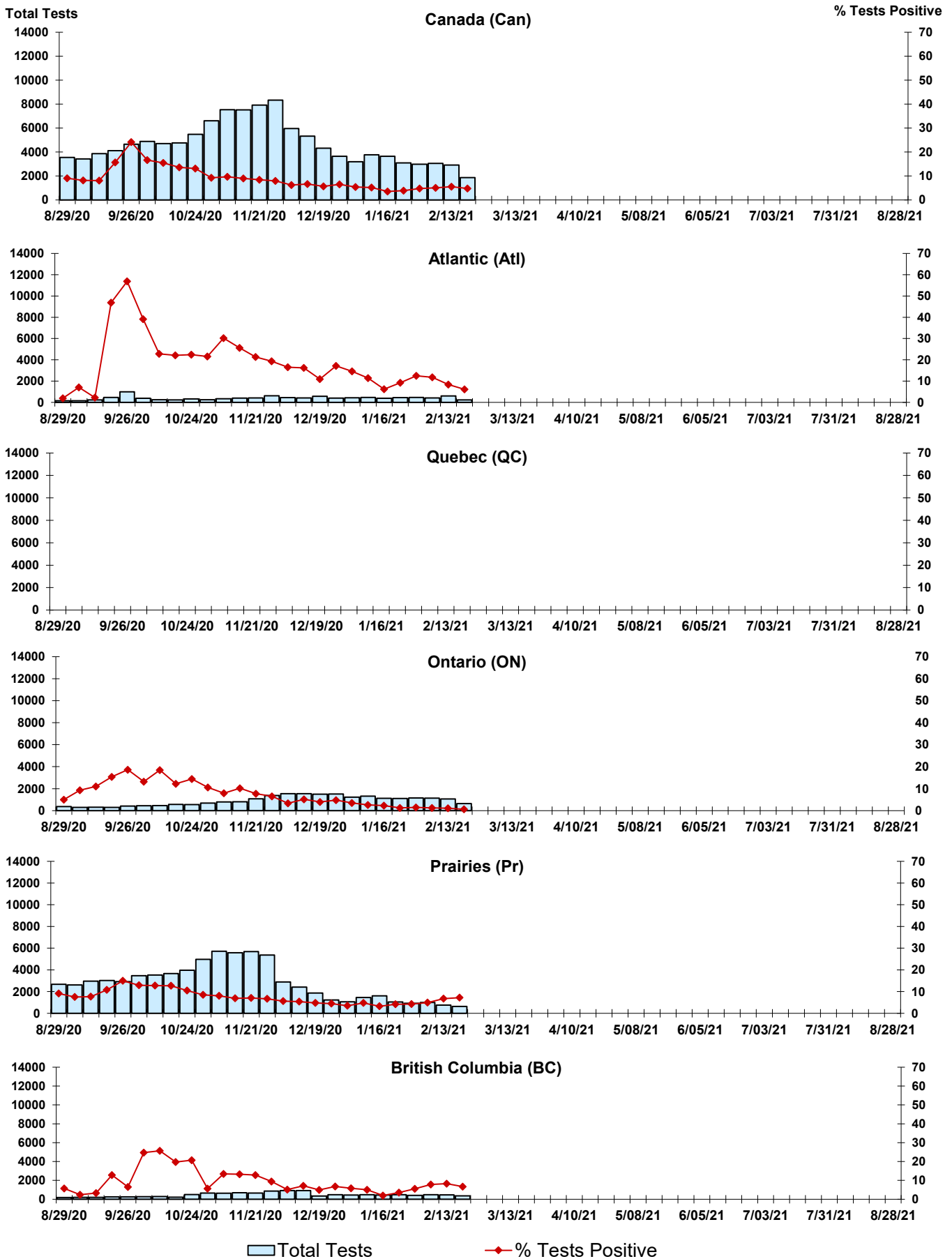
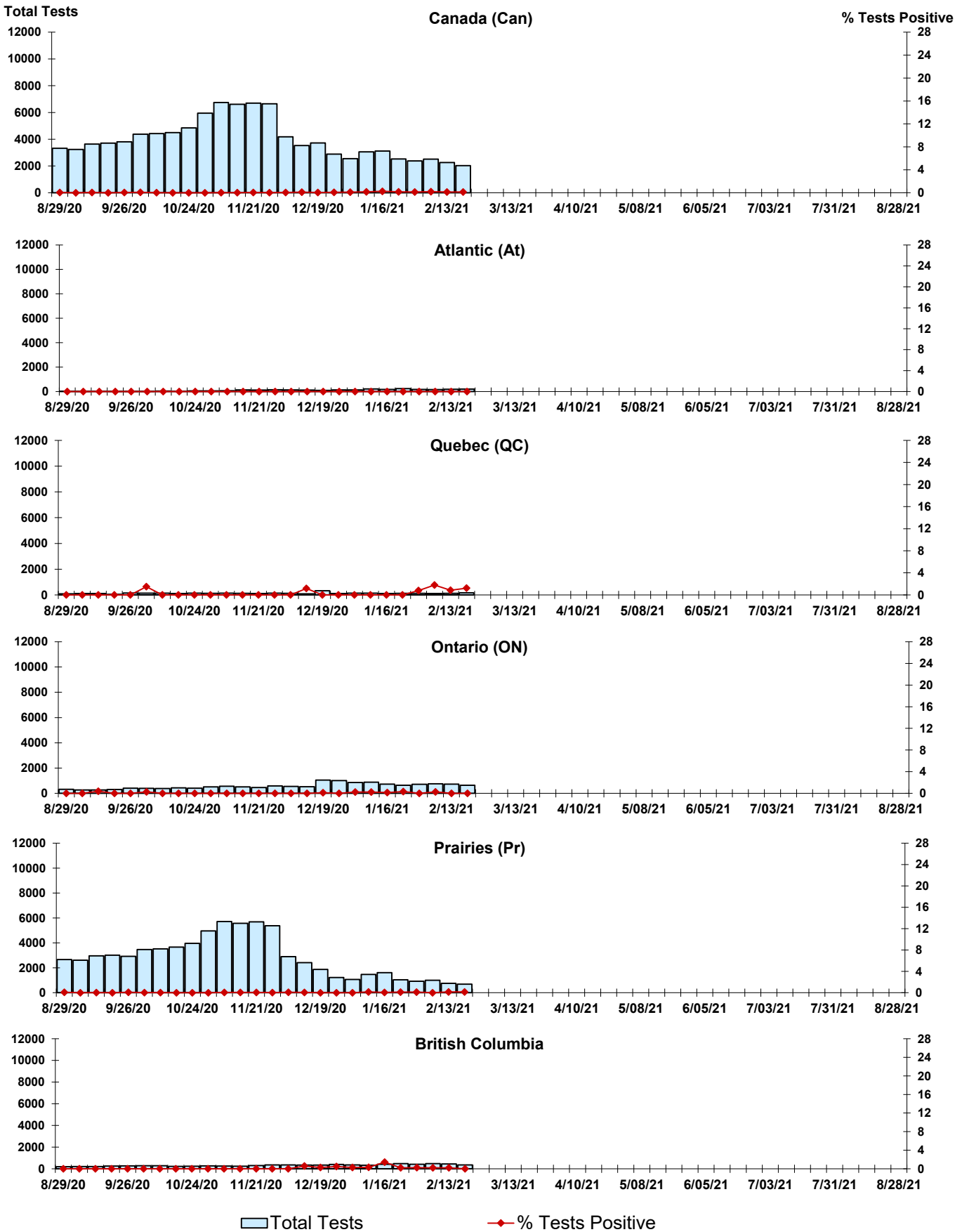


Figure 8: Positive Coronavirus (coron) Tests (%) in Canada by Region by Week of Report



Abbreviations:

A(H1N1)pdm09: Influenza A(H1N1)pdm09

A(H3): Influenza A(H3N2)

A (UnS): Influenza A (Unsubtyped)

Adeno: Adenovirus

CHEO: Children's Hospital of Eastern Ontario

Coron: Coronavirus

Entero: Enterovirus

hMPV: human metapneumovirus

HSC: Health Sciences Centre

N.A.: Not Applicable

P.H.L.: Public Health Laboratory

P.H.O.L.: Public Health Ontario Laboratory

PIV: Parainfluenza

Rhino: Rhinovirus

RSV: Respiratory syncytial virus

UHN: University Health Network

Notes:

The data in the RVDSS report represent surveillance data available at the time of writing. Missing data are denoted by N.A.

Specimens from Yukon (YT), Northwest Territories (NT) and Nunavut (NU) are sent to reference laboratories in other provinces. Results reported for the Territories reflect the number of specimens that are identified as originating from YT, NT or NU.

Delays in the reporting of data may cause data to change retrospectively.

Due to reporting delays, the sum of weekly report totals do not add up to cumulative totals.