

Important Areas for
BIRDS IN NUNAVUT
Part 1 of 2

ᐱᕐᕈᕐᕐᕐᕐᕐᕐ ᕐᕈᕐᕐ
ᐱᕐᕈᕐᕐᕐᕐᕐᕐ ᕐᕈᕐᕐ
ᐱᕐᕈᕐᕐ 1 ᕐᕈᕐᕐ 2

Akhuurutauyut Nayugangit
TINGMIAQNUT NUNAVUTMI
Aki 1



Important Areas for Birds in Nunavut, Part 1 of 2

Cat. No.: CW66-302/2012E-PDF

ISBN: 978-1-100-19622-0

EC21137

Unless otherwise specified, you may not reproduce materials in this publication, in whole or in part, for the purposes of commercial redistribution without prior written permission from Environment and Climate Change Canada's copyright administrator. To obtain permission to reproduce Government of Canada materials for commercial purposes, apply for Crown Copyright Clearance by contacting:

Environment and Climate Change Canada
Public Inquiries Centre
12th Floor, Fontaine Building
200 Sacré-Coeur Boulevard
Gatineau QC K1A 0H3
Telephone: 819-938-3860
Toll Free: 1-800-668-6767 (in Canada only)
Email: ec.enviroinfo.ec@ec.gc.ca

Cover photo: © Gerry Beyersbergen; Tom Johnson; Kyle Elliott, Environment and Climate Change Canada

© Her Majesty the Queen in Right of Canada, represented by the Minister of Environment and Climate Change, 2012

Aussi disponible en français

Definitions of Words and Terms used in the Booklet

Some of the words and names used in this booklet may be unfamiliar to some readers. We have included brief definitions of some of them below. For additional information, please contact the Canadian Wildlife Service in Yellowknife, at 867-669-4709.

Abundance – Number of birds in an area.

Breeding sites – An area where birds find mates, build nests, lay eggs and raise chicks.

Colony – large group of birds of one or more species that choose to nest together.

Committee on the Status of Endangered Wildlife in Canada (COSEWIC)

– A national committee of experts who are tasked with assessing the biological status of species and assigning each one to a category of risk based on the best available scientific, community and Aboriginal traditional knowledge. COSEWIC makes a recommendation on “risk level” to the federal government. All the species recommended by COSEWIC for designation as a species at risk are on the COSEWIC list.

Diversity – Number of bird species (types of birds) in an area.

Endangered – A species that is close to no longer existing in Canada or the world.

Forage – What a bird eats or where they look for food.

Important Bird Area (IBA) – Sites across the world that identify habitat that is important for birds to survive.

Key Marine Habitat Sites – Areas that are mainly marine (ocean) used by at least 1% of the population of a migratory bird species in Canada anytime during the year; selected by Environment Canada (Canadian Wildlife Service).

Key Terrestrial Habitat Site – Areas that are mainly land used by at least 1% of the population of a migratory bird species in Canada anytime during the year; selected by Environment Canada (Canadian Wildlife Service).

Maternity denning area – A place where female Polar Bears build dens and give birth.

Migration – Seasonal journey of birds from an area of the world to and from their breeding grounds in Nunavut.

Migratory Bird Sanctuary (MBS) – An area managed by Environment Canada (Canadian Wildlife Service) for the protection of migratory bird habitats and breeding sites.

Monitoring – Work of observing, recording and studying wildlife species.

Moult – Process whereby birds shed old feathers and grow new ones.

National Park – An area managed by Parks Canada for the protection of natural areas that are representative of the different types of ecosystems found in Canada.

National Wildlife Area (NWA) – An area managed by Environment Canada (Canadian Wildlife Service) for the protection of the habitats of all species.

Newly identified important bird area – An area important for bird conservation in Nunavut that is not already protected.

Oasis – An area that provides better habitat than the surrounding area.

Polynya – An area of water that is surrounded by ice but open all year, even in winter.

Population – A group of birds of the same species (or subspecies) that live together.

RAMSAR Wetland – Wetlands of international importance to populations of birds.

Seabird – Marine birds (like murre, kittiwakes, gulls) that spend most of their time near the coast and over the oceans.

Shorebird – Birds (like sandpipers, plovers, phalaropes) that spend most of their time in or near wetlands.

Species – A group of birds that look and behave the same and can breed with each other.

Species at risk – Species that may become extinct. The population is not healthy enough to increase or maintain its numbers.

Species at Risk Act (SARA) – The federal Act in Canada that protects species on the List of Wildlife Species at Risk (Schedule 1) and their critical habitat.

Staging area – An area where birds group together to feed and prepare for migration to another area (north or south).

Stopover site – A place where migratory birds stop to rest, sleep and feed.

Threatened – A designation for a species that is likely to become endangered if nothing is done to change what is causing its population decline.

Subspecies – A population of a species that differs physically and genetically from the rest of the species.

UNESCO World Heritage Site – A place that is of cultural or natural importance to the world (as determined by the United Nations Educational, Scientific and Cultural Organization).

Wetland – Land that is mostly or wholly covered with water and inhabited by plants that are adapted to the wet conditions.

Ilangit tainiit atingitlu atuqtauyut uumani makpiraami ilitarnain-niaqtuq ilanginnut taiguqtunut. Ilaliutiyavut naittunik tukiliurutinik ilanganut uuma ataanut. Naunairyuumirumaguvit, uqaqatigitjavat Kanatami Huratjaliquitigut Munaqtiuyut Yalunaimi, uumani 867-669-4709.

Atlatqiiinngit – Qaffiuyut tingmiat atlatqiiingit (qanurittut tingmiat) talvani.

Akhuuqtauyut Nunami Nayuqarvigiyauyunik – Nayugauyut nunauyuq atuqtauyut 1 pusantnganik tingmianit ukunani ingilrayut tingmiat atlatqiiingyut Kanatami ukiuq tamaat; tikkuaqtauyut Avatiliriniqmut Kanatamit (Kanatami Huratjaliquitigut Munaqtiuyut).

Akhuuqtauyut Tariumi Nayuqarvigiyauyunik – Nayugauyut imaqmi ittut (tariuq) atuqtauyut 1 pusantnganik tingmianit ukunani ingilrayut tingmiat atlatqiiingyut Kanatami ukiuq tamaat; tikkuaqtauyut Avatiliriniqmut Kanatamit (Kanatami Huratjaliquitigut Munaqtiuyut).

Akhuurutauyunik Tingmiaqaqviit (IBA) – Nayugangit tamainni nunaryuami ilitariyauyut nayugauyut akhuurutauyut tingmianut uumagiamikni.

Amigaittuninnga – Qaffiuyut tingmiat talvani ittunik.

Atlatqiiingyut Huratjat – Amihuuyut huratjat atlatqiiingyut tautuknaqtunik pitquhinginnikluuniit atlanit huratjanit.

Atlatqiiingyut tingmiat – Amihuuyut tingmiat qupanuat aatjikutavyakhimayut pitquhiqarhutik aatjikutamiklu ivaqatigiikhutiklu.

Hikuilruq – Imailruq hikuqaqtuq angmaumayuq kihimi ukiuq tamaat, ukiumilu.

Hinaanirmiuyuktut qupanuat – Qupanuat (ukunatat higariat, tutlik, higariavyaktutlu) imailirainnarmiinginnaqtut hanianiluuniit.

Huratjat nungutpallialiqtut – Huratjat nungutpallialiqtut. Amihuuningit aaniaqpallaarmata angikliyuumiutigiamikni pihimagiaminiluuniit qaffiutinginnik.

Huratjat nungutpallialiqtut Maligaq (SARA) – Tamna kanatami Maligaq Kanatami nunguttaliyuq huratjanik Titraqhimayumi Huratjat Nungutpallialiqtut (Naunaitkutangani 1) akhuurutauyutlu nayugangit.

Ihaliqtut – Pitquhiq talvani tingmiat katagaqtait utuqqangit hulunnngit nutaaniktauq nauplutik.

Imalirainnait – Nuna imainnayuq tamaatluuniit tatahimayuq imaqmik nayuqtauyut nauttianit hunngiutihimayut kinipainnaqtumit.

Ingilravingit Ivavimiknut – Ivavikminut ingilraqhigaangat tingmiat humitliqaq nunaryuamit ivavimiknut ivavimiknit Nunavunmi.

Ivavingit – Nayugangit talvani tingmiat ivaqatikhamiknik, pikiutaliuqtut, manniliuqhutik nirlatjayutlu.

Kanatami Huratjavigarvingit (NWA) – Huratjavigarvik munariyauyut Avatiliriyiikkut Kanatamit (Kanatami Huratjaliquitigut Munaqtiuyut) tammaqtailiplugit nunaguttailiplutik ahiruqtailiplugit nayugangit tamaita huratjat.

Kanatami Pulaarvingit – Pulaarvik munariyauyuq Pulaarvik Kanatamit ahiruqtailininnganut avatinganik naunaittuq atlatqiinguyunik avatingit takunnaqtuq Kanatami.

Katimayiyut Qanurittaakhaanganik nungutpallialiqtut Huratjat Kanatami (COSEWIC) – Kanatami katimayiyut ayuittiaqtunik havaaniktut ihivriuriamikni uumayut qanuriliurninnga huratjat tuniqhainiqlu tamarmik qanuriliurninnganut qanurittaanganik piyuq nakuutqiyayumut piinarialik qauyihaininnganut, nunannga Nunaqaqqaarhimayutlut qangaraaluknitanganik ilihimaniq. COSEWIC piliuqtuq pitquyayukhamik uumunnga “nungutpallialiqtunik” kanatap kavamanganut. Tamaita huratjat pitquyahimayut COSEWIC-mit tikkuaqtauhimayut huratjat nungutpallialiqtunik ittut COSEWIC titiraqhimaninngani.

Katitiqhimayut – Amigaittut tingmiat atauhiyuyumit amigaittunikluuniit atlatqiinguyut tingmiat ivaqatigiiktut haniani atauttikktut.

Katitirivingit – Katitirivingit talvani tingmiat qupanuatlu katimayut natirnamir niriniaqtut upalungaiyarhutiklu ingilragiamikni tingmivikminut (ukiuqtaqtumut utiliraangamikluuniit ausaimut).

Munariniq – Havaaq ihivriuqniq, titiraqmunngarniq naunaiyayuniklu huratjanik atlatqiinguyunik.

Nannut Apittaarvingit – Humi arnallak Nanuit apittaarvingit mamirraaplutik.

Niqingit – Humik tingmiat nirivaktut humutluuniit qinirhiavaktut niqikhamiknik.

Nunagutpallialiqtut – Huratjat nungutpallialiqtut Kanatami nunaryuaptikniiluuniit.

Nungutpallialiqtut – Taininnga huratjanut nungutpallialiqtut hulingitkumik nunguttailigiami huuqlu amihuuningit ikiklivallialiqtuq.

Nutaaq ilitariyaulihaaqhimayuuq akhuurutauyuq tingmiaqarvinga – tingmiaqarivik akhuurutauyuq tingmianut nunguttailivik Nunavunmi tatja nunguttaalihimaittuq huli.

Nutqarvigiyangit – Nutqarviingit talvani ingilrayut qupanuat tingmiat nutqarvigiyangit unaguiqhigiamikni, hinigiamikni niringiamikniiluuniit.

Pittailiviuyut – Nayugaq tuniyuq nakuutqiyayumik nayugakhamik talvanganit.

RAMSAR Imalirainnait – Imalirainnait tamainni nunaryuaptikni akhuurutauyut amihuuninginnut tingmianut.

Tariuqmiutat tingmiat – Imarmiutat tingmiat (ukunatat pittiulaat, naunaryuit, nauyat) hinaaniinginnaqtut tariuqmilu.

Tingmianik Manningillu Pittailimalvik (MBS) – Nayugangit munariyauyuq munariyauyuq Avatiliriyiikkut Kanatamit (Kanatami Huratjaliqitigtut Munaqtiuyut) nunguttailipugit tingmiat manningillu pittailimalvingit ivavingitlu.

Tingmiavaluit – Tingmiat aatjikutariiktunik (ilanganilu) atauttikktut nayugalgit.

UNESCO Nunaryuap Iitquhinginnik Nayuganga – Nayugaq pitquhimitigtut akhuurutauyuquluuniit nunaryuamut (ihumagiyayuuq ukunannga Hilaryuarmiunmi Ilihainikkut, Qauyiharnikkut Pitquhitigtutlu Timiqutigiyayuuq).

IMPORTANT AREAS FOR BIRDS IN NUNAVUT

ᐱᕐᕋᕐᕐᕐᕐᕐᕐ ᕐᕐᕐ ᕐᕐᕐᕐᕐᕐᕐ ᕐᕐᕐᕐᕐ

AKHUURUTAUYUT NAYUGANGIT TINGMIAQNUT NUNAVUNMI

Kivalliq Region

- 13. BOAS RIVER, SOUTHAMPTON ISLAND
- 14. CAPE PEMBROKE, COATS ISLAND
- 15. COATS ISLAND LOWLANDS
- 16. EAST BAY, SOUTHAMPTON ISLAND
- 17. McCONNELL RIVER
- 18. MIDDLE BACK RIVER
- 19. MIDDLE QUOICH RIVER
- 20. THELON RIVER
- 21. TURTON ISLAND

Kitikmeot Region

- 25. CAMBRIDGE BAY AREA, VICTORIA ISLAND
- 26. JENNY LIND ISLAND
- 27. LAMBERT CHANNEL
- 28. LOWER BACK RIVER
- 29. MELBOURNE ISLAND
- 30. QUEEN MAUD GULF
- 31. RASMUSSEN LOWLANDS
- 32. SOUTHWESTERN VICTORIA ISLAND

Qikiqtaaluk Region

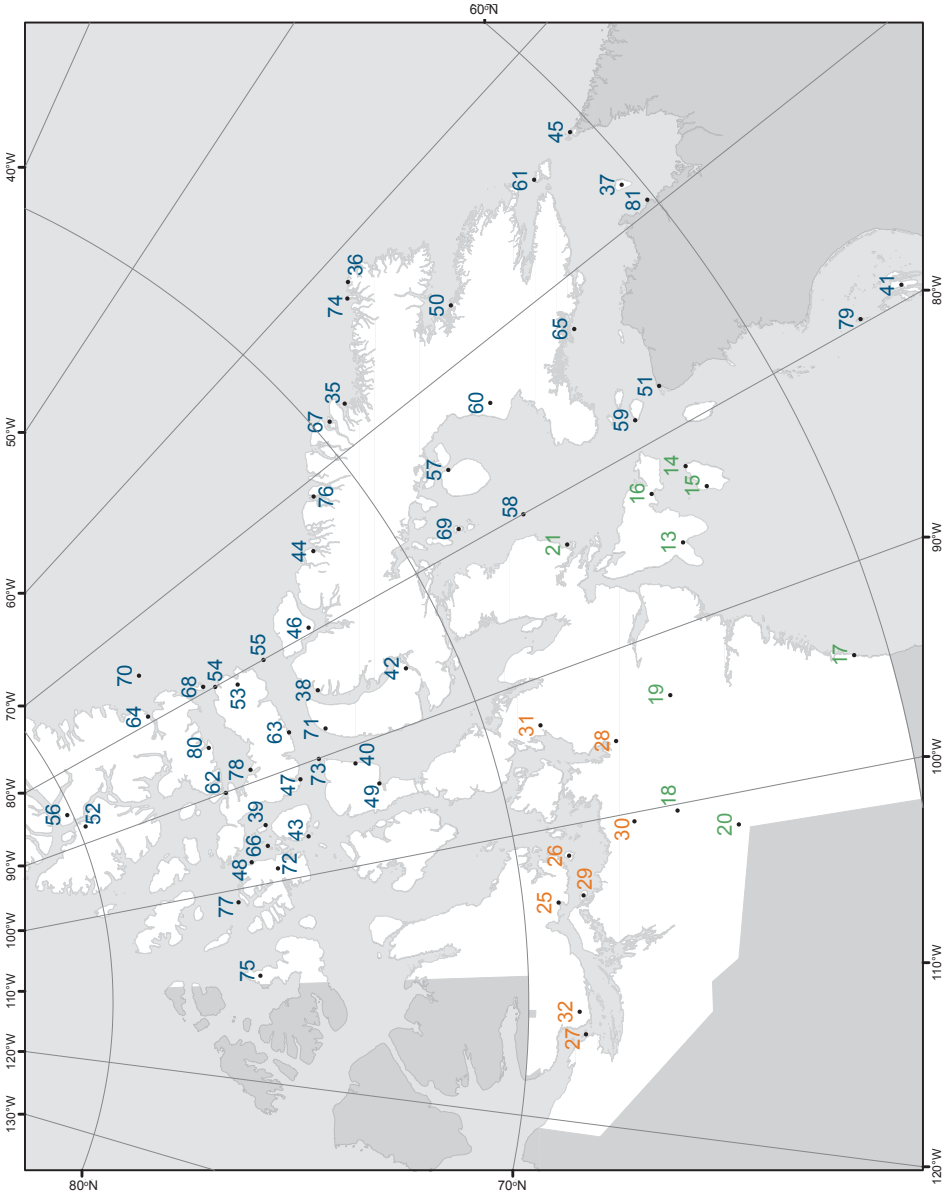
- 35. ABBAJALIK AND IJUTUK ISLANDS, BAFFIN ISLAND
- 36. AKPAIT (REID BAY), BAFFIN ISLAND
- 37. AKPATOK ISLAND
- 38. BAILLARGE BAY, BAFFIN ISLAND
- 39. BAILLIE-HAMILTON ISLAND
- 40. BATTY BAY, SOMERSET ISLAND
- 41. BELCHER ISLANDS
- 42. BERLINGUET INLET, BAFFIN ISLAND
- 43. BROWNE ISLAND
- 44. BUCHAN GULF, BAFFIN ISLAND
- 45. BUTTON ISLANDS
- 46. CAPE HAY AND CAPE GRAHAM MOORE, BYLOT ISLAND
- 47. CAPE LIDDON AND RADSTOCK BAY, DEVON ISLAND
- 48. CHEYNE ISLANDS

- 49. CRESWELL BAY, SOMERSET ISLAND
- 50. CUMBERLAND SOUND
- 51. DIGGES SOUND
- 52. EAST AXEL HEIBERG ISLAND
- 53. EASTERN DEVON ISLAND
- 54. EASTERN JONES SOUND
- 55. EASTERN LANCASTER SOUND
- 56. FOSHEIM PENINSULA, ELLESMERE ISLAND
- 57. FOXE BASIN ISLANDS
- 58. FOXE BASIN
- 59. FRASER ISLAND
- 60. GREAT PLAIN OF THE KOUKDJUAK, BAFFIN ISLAND
- 61. HANTZSCH ISLAND
- 62. HELL GATE AND CARDIGAN STRAIT
- 63. HOBHOUSE INLET, DEVON ISLAND
- 64. INGLEFIELD MOUNTAINS, ELLESMERE ISLAND
- 65. MARKHAM BAY, BAFFIN ISLAND
- 66. NASARUVAALIK (UNNAMED) ISLAND
- 67. NINGINGANIQ (ISABELLA BAY), BAFFIN ISLAND
- 68. NIRJUTIQAVVIK (COBURG ISLAND)
- 69. NORTH SPICER ISLAND
- 70. NORTH WATER POLYNYA
- 71. NORTHWESTERN BRODEUR PENINSULA, BAFFIN ISLAND
- 72. POLAR BEAR PASS, BATHURST ISLAND
- 73. PRINCE LEOPOLD ISLAND
- 74. QAQUILLIUT (CAPE SEARLE), BAFFIN ISLAND
- 75. SABINE PENINSULA, MELVILLE ISLAND
- 76. SCOTT INLET, BAFFIN ISLAND
- 77. SEYMOUR ISLAND
- 78. SKRUIS POINT, DEVON ISLAND
- 79. SLEEPER ISLANDS
- 80. SYDKAP ICE FIELD, ELLESMERE ISLAND
- 81. UNGAVA BAY ARCHIPELAGO

The numbers on the map refer to the page number
of the description for that Important Area.

ᓄᓇᓂᓃᓂᓃᓂᓃᓂ ᓄᓇᓂᓃᓂᓃᓂᓃᓂ ᓄᓇᓂᓃᓂᓃᓂᓃᓂ ᓄᓇᓂᓃᓂᓃᓂᓃᓂ
ᓄᓇᓂᓃᓂᓃᓂᓃᓂᓃᓂ ᓄᓇᓂᓃᓂᓃᓂᓃᓂᓃᓂ ᓄᓇᓂᓃᓂᓃᓂᓃᓂᓃᓂ.

Nampangit nunauyaqmi piyuq makpiraap nampanganut
titiraqhimaninganut talvunnga Akhuurutauyumut.



Kivalliq Region

ᐅᑦᑲᑦᑲᑦᑲᑦᑲᑦ

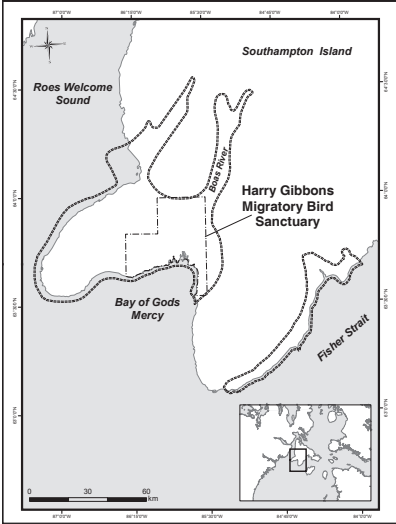


Photo: © Tom Johnson



BOAS RIVER, SOUTHAMPTON ISLAND

>ᐱᑦ ᐃᑦ, ᐱᑦᑲᑦ



Snow Goose
ᐅᑦᑲᑦᑲᑦᑲᑦᑲᑦ

Photo: © Mikilaaq Centre

What is important here?

- Large Lesser Snow Goose colonies
- Atlantic Brant, Cackling Goose and Tundra Swan
- Walrus, Beluga Whale, seals, and Polar Bear

Why is it important?

- Migratory Bird Sanctuary
- 10% of Canada's Lesser Snow Goose nest here
- Nearby polynya frequented year-round by Bowhead Whale and Narwhal

ᐅᑦᑲᑦᑲᑦᑲᑦᑲᑦ ᑲᑦᑲᑦᑲᑦᑲᑦᑲᑦ

- ᐱᑦᑲᑦᑲᑦᑲᑦᑲᑦ ᐅᑦᑲᑦᑲᑦᑲᑦᑲᑦᑲᑦ
- ᑲᑦᑲᑦᑲᑦᑲᑦᑲᑦ, ᐅᑦᑲᑦᑲᑦᑲᑦᑲᑦᑲᑦ ᑲᑦᑲᑦᑲᑦᑲᑦᑲᑦᑲᑦ
- ᐱᑦᑲᑦᑲᑦᑲᑦᑲᑦ, ᑲᑦᑲᑦᑲᑦᑲᑦᑲᑦᑲᑦ, ᑲᑦᑲᑦᑲᑦᑲᑦᑲᑦᑲᑦ

ᐅᑦᑲᑦᑲᑦᑲᑦᑲᑦ ᑲᑦᑲᑦᑲᑦᑲᑦᑲᑦ

- ᐅᑦᑲᑦᑲᑦᑲᑦᑲᑦᑲᑦ ᑲᑦᑲᑦᑲᑦᑲᑦᑲᑦᑲᑦ ᐅᑦᑲᑦᑲᑦᑲᑦᑲᑦᑲᑦᑲᑦ
- 10%-ᑲᑦᑲᑦᑲᑦᑲᑦᑲᑦ ᑲᑦᑲᑦᑲᑦᑲᑦᑲᑦᑲᑦᑲᑦ ᑲᑦᑲᑦᑲᑦᑲᑦᑲᑦᑲᑦᑲᑦ
- ᑲᑦᑲᑦᑲᑦᑲᑦᑲᑦᑲᑦᑲᑦᑲᑦ ᐅᑦᑲᑦᑲᑦᑲᑦᑲᑦᑲᑦᑲᑦ ᐅᑦᑲᑦᑲᑦᑲᑦᑲᑦᑲᑦᑲᑦᑲᑦ

CAPE PEMBROKE, COATS ISLAND

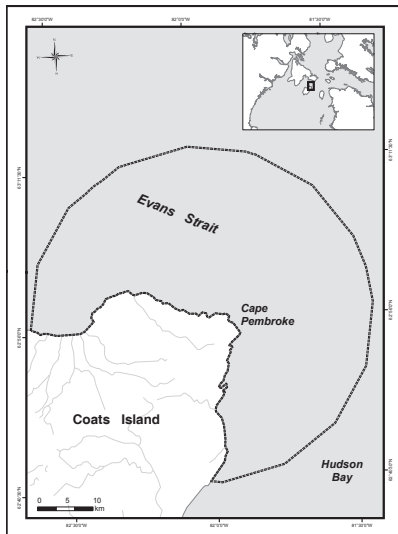
ᐱᑦᑕᑦᑲᑦᑲᑦ, ᐱᑦᑕᑦᑲᑦᑲᑦ

Photo: Garry Donaldson © Environment Canada



Thick-billed Murre

ᐱᑦᑕᑦᑲᑦ



What is important here?

- Large Thick-billed Murre colonies
- Walrus, Polar Bear, Bowhead and Beluga Whale

Why is it important?

- 2% of Canada's Thick-billed Murre nest here
- Longest monitored seabird colony in Arctic Canada
- Important monitoring site for seabirds and gulls

Special consideration

- Increased cruise ship tourism could have environmental impacts

ᐃᑦᑕᓇᑲᑦᑲᑦ ᑕᑦᑲᑦᑲᑦ?

- ᐱᑦᑕᑦᑲᑦ ᐱᑦᑕᑦᑲᑦᑲᑦ
- ᐱᑦᑕᑦᑲᑦ, ᐱᑦᑕᑦᑲᑦ, ᐱᑦᑕᑦᑲᑦ ᓂᓂᑲᑦᑲᑦ

ᓂᓂᑲᑦᑲᑦ ᐃᑦᑕᓇᑲᑦᑲᑦ?

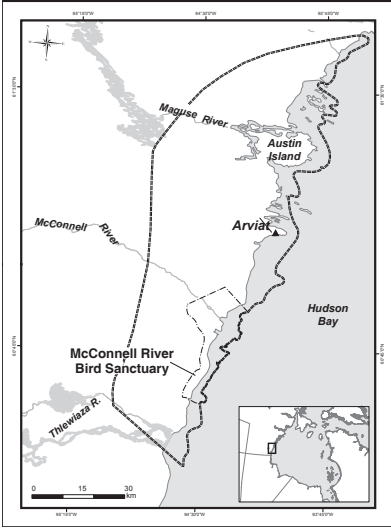
- 2%-ᓂᑦᑲᑦ ᓂᑲᑕᑦ ᐱᑦᑕᑦᑲᑦ ᐱᑦᑕᑦᑲᑦᑲᑦ ᑕᑦᑲᑦᑲᑦ ᓂᓂᑲᑦᑲᑦ
- ᐱᑦᑕᑦᑲᑦᑲᑦ ᓂᓂᑲᑦᑲᑦ ᓂᓂᑲᑦᑲᑦ ᐱᑦᑕᑦᑲᑦ ᐱᑦᑕᑦᑲᑦ ᐱᑦᑕᑦᑲᑦ
- ᐱᑦᑕᑦᑲᑦᑲᑦ ᓂᓂᑲᑦᑲᑦ ᐱᑦᑕᑦᑲᑦ ᐱᑦᑕᑦᑲᑦ

ᐱᑦᑕᑦᑲᑦᑲᑦ ᐱᑦᑕᑦᑲᑦᑲᑦ ᐱᑦᑕᑦᑲᑦᑲᑦᑲᑦ

- ᐱᑦᑕᑦᑲᑦᑲᑦ ᐱᑦᑕᑦᑲᑦᑲᑦ ᐱᑦᑕᑦᑲᑦᑲᑦ ᐱᑦᑕᑦᑲᑦᑲᑦ
- ᐱᑦᑕᑦᑲᑦᑲᑦ ᐱᑦᑕᑦᑲᑦᑲᑦ ᐱᑦᑕᑦᑲᑦᑲᑦ

McCONNELL RIVER

ᐅᑦᑲᑦᑲᑦᑲᑦ



Snow Goose
ᐅᑦᑲᑦᑲᑦᑲᑦ

Photo: Canadian Wildlife Service © Environment Canada

What is important here?

- Several species of geese nest in the area
- Caribou winter along the coast
- Seals, Beluga Whales, and Polar Bear

Why is it important?

- Migratory Bird Sanctuary
- Wetland of International Importance (RAMSAR site)

ᐅᑦᑲᑦᑲᑦᑲᑦ ᑲᑦᑲᑦᑲᑦᑲᑦ?

- ᐅᑲᑲᑦᑲᑦᑲᑦᑲᑦ ᐅᑲᑲᑦᑲᑦᑲᑦᑲᑦᑲᑦ ᐅᑲᑲᑦᑲᑦᑲᑦᑲᑦ ᐅᑲᑲᑦᑲᑦᑲᑦᑲᑦ ᑲᑦᑲᑦᑲᑦᑲᑦ
- ᑲᑦᑲᑦᑲᑦᑲᑦ ᐅᑲᑲᑦᑲᑦᑲᑦᑲᑦ ᐅᑲᑲᑦᑲᑦᑲᑦᑲᑦ
- ᐅᑲᑲᑦᑲᑦᑲᑦᑲᑦ, ᐅᑲᑲᑦᑲᑦᑲᑦᑲᑦ

ᐅᑲᑲᑦᑲᑦᑲᑦ ᑲᑦᑲᑦᑲᑦᑲᑦ?

- ᐅᑲᑲᑦᑲᑦᑲᑦᑲᑦᑲᑦ ᐅᑲᑲᑦᑲᑦᑲᑦᑲᑦ ᐅᑲᑲᑦᑲᑦᑲᑦᑲᑦᑲᑦ
- ᐅᑲᑲᑦᑲᑦᑲᑦᑲᑦᑲᑦ ᐅᑲᑲᑦᑲᑦᑲᑦᑲᑦᑲᑦ ᐅᑲᑲᑦᑲᑦᑲᑦᑲᑦᑲᑦ ᐅᑲᑲᑦᑲᑦᑲᑦᑲᑦᑲᑦᑲᑦ ᐅᑲᑲᑦᑲᑦᑲᑦᑲᑦᑲᑦᑲᑦ

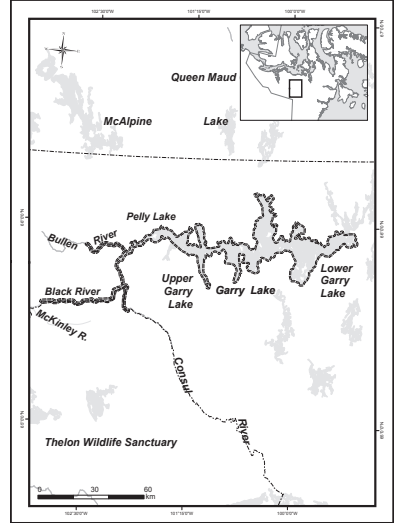
MIDDLE BACK RIVER

ᑭᐱᑲ ᑲᑦᑲᑦᑲᑦᑲᑦ ᑲᑦᑲᑦᑲᑦ



Photo: © Tom Johnson

Snow Goose
ᑲᑦᑲᑦᑲᑦ



What is important here?

- Many geese moult in the area
- Snow Goose nesting colonies
- Caribou calving grounds along southern boundary

Why is it important?

- Borders the Thelon Wildlife Sanctuary
- Designated an Important Bird Area

Special consideration

- Considerable diamond and mineral exploration activity occurring

ᐱᑦᑲᑦᑲᑦᑲᑦᑲᑦ ᑲᑦᑲᑦᑲᑦ?

- ᐱᑦᑲᑦᑲᑦᑲᑦᑲᑦ ᐱᑦᑲᑦᑲᑦᑲᑦᑲᑦ (ᐱᑦᑲᑦᑲᑦᑲᑦᑲᑦ ᐱᑦᑲᑦᑲᑦᑲᑦᑲᑦ) ᑲᑦᑲᑦᑲᑦ
- ᑲᑦᑲᑦᑲᑦ ᐱᑦᑲᑦᑲᑦᑲᑦᑲᑦ
- ᑲᑦᑲᑦᑲᑦ ᐱᑦᑲᑦᑲᑦᑲᑦᑲᑦ ᑲᑦᑲᑦᑲᑦᑲᑦᑲᑦ ᐱᑦᑲᑦᑲᑦᑲᑦᑲᑦ

ᐱᑦᑲᑦᑲᑦᑲᑦᑲᑦ?

- ᐱᑦᑲᑦᑲᑦᑲᑦᑲᑦᑲᑦ ᑲᑦᑲᑦᑲᑦ ᐱᑦᑲᑦᑲᑦᑲᑦᑲᑦᑲᑦ
- ᐱᑦᑲᑦᑲᑦᑲᑦᑲᑦᑲᑦ ᐱᑦᑲᑦᑲᑦᑲᑦᑲᑦᑲᑦ ᐱᑦᑲᑦᑲᑦᑲᑦᑲᑦᑲᑦᑲᑦ

ᐱᑦᑲᑦᑲᑦᑲᑦᑲᑦᑲᑦ ᐱᑦᑲᑦᑲᑦᑲᑦᑲᑦᑲᑦ

- ᐱᑦᑲᑦᑲᑦᑲᑦᑲᑦ ᐱᑦᑲᑦᑲᑦᑲᑦᑲᑦᑲᑦ ᐱᑦᑲᑦᑲᑦᑲᑦᑲᑦᑲᑦ ᐱᑦᑲᑦᑲᑦᑲᑦᑲᑦᑲᑦᑲᑦ ᐱᑦᑲᑦᑲᑦᑲᑦᑲᑦᑲᑦᑲᑦ

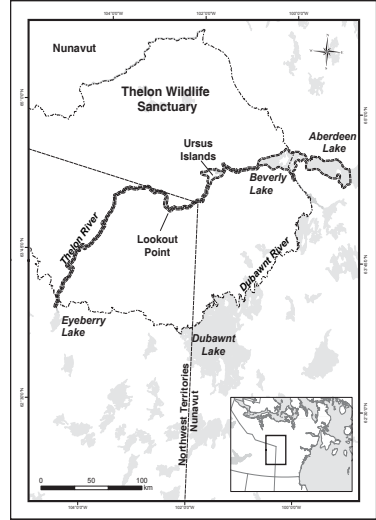
THELON RIVER

ᐅᑲᓴᓂᓄᓂᓂ ᐅᓂ



Photo: Vicky Johnston © Environment Canada

Canada Goose
ᐅᑲᓴᓂᓄᓂᓂ, ᐅᑲᓴᓂᓄᓂᓂ



What is important here?

- Key area for thousands of moulting geese
- Raptor (hawks and falcons) breeding sites
- Caribou calving grounds along northern boundary

Why is it important?

- Geese are sensitive to disturbance during their moult because they cannot fly

Special consideration

- Proposed uranium mine site southeast of Aberdeen Lake

ᐱᑦᑲᓴᓂᓄᓂᓂ ᑕᓂᐱᓂ?

- ᐱᑦᑲᓴᓂᓄᓂᓂ ᐱᑲᑲᓂᓄᓂᓂᓂ ᑕᐅᓴᓂᓄᓂᓂ ᐅᑲᓴᓂᓄᓂᓂ ᐱᑲᑲᓂᓄᓂᓂ (ᐱᑲᑲᓂᓄᓂᓂᓂᓂᓂ ᐱᑲᑲᓂᓄᓂᓂ)
- ᐱᑲᑲᓂᓄᓂᓂᓂᓂ ᐅᑲᓴᓂᓄᓂᓂ ᐱᑲᑲᓂᓄᓂᓂᓂ
- ᐅᑲᓴᓂᓄᓂᓂ ᐅᑲᓴᓂᓄᓂᓂ ᐅᑲᓴᓂᓄᓂᓂ ᐱᑲᑲᓂᓄᓂᓂ

ᐱᑦᑲᓴᓂᓄᓂᓂ?

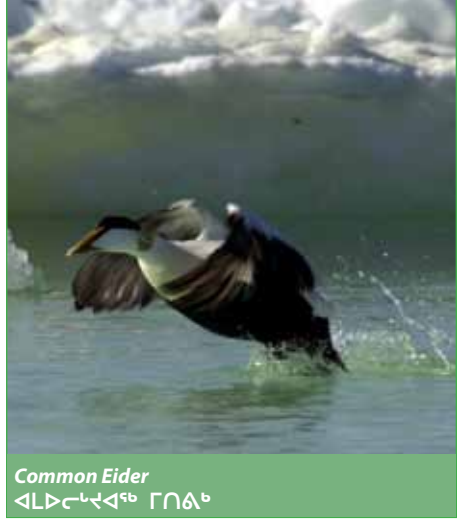
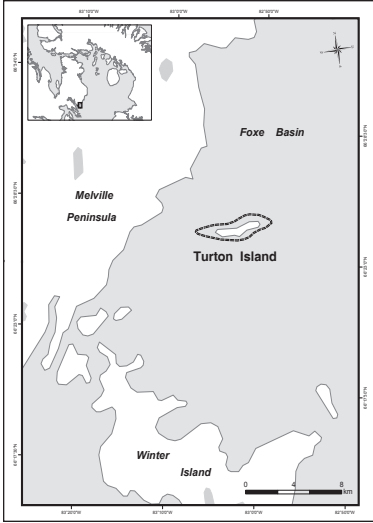
- ᐅᑲᓴᓂᓄᓂᓂ ᐱᑲᑲᓂᓄᓂᓂᓂ ᐱᑲᑲᓂᓄᓂᓂ ᐱᑲᑲᓂᓄᓂᓂᓂ (ᐱᑲᑲᓂᓄᓂᓂᓂᓂ ᐱᑲᑲᓂᓄᓂᓂᓂ ᐱᑲᑲᓂᓄᓂᓂᓂ)

ᐱᑲᑲᓂᓄᓂᓂ ᐱᑲᑲᓂᓄᓂᓂ

- ᐱᑲᑲᓂᓄᓂᓂᓂᓂ ᐱᑲᑲᓂᓄᓂᓂᓂ ᐱᑲᑲᓂᓄᓂᓂᓂ ᐱᑲᑲᓂᓄᓂᓂᓂ ᐱᑲᑲᓂᓄᓂᓂᓂ

TURTON ISLAND

ᐃᓄᐱᓕᓕᓐ



Common Eider
ᐱᓕᓕᓐᓂᓐᓂᓐ ᐱᓕᓕᓐ

Photo: © Anders Mosbech

What is important here?

- Large colony of Common Eider
- Swans, geese, guillemots, gulls and terns

Why is it important?

- One of the largest Common Eider colonies in the eastern Canadian Arctic

ᐱᓕᓕᓐ ᐱᓕᓕᓐᓂᓐᓂᓐ ᐱᓕᓕᓐ?

- ᐱᓕᓕᓐᓂᓐ ᐱᓕᓕᓐᓂᓐᓂᓐᓂᓐ ᐱᓕᓕᓐᓂᓐ
- ᓂᓐᓂᓐᓂᓐ, ᓂᓐᓂᓐᓂᓐ, ᐱᓕᓕᓐᓂᓐ, ᐱᓕᓕᓐᓂᓐ ᐱᓕᓕᓐ ᐱᓕᓕᓐᓂᓐᓂᓐᓂᓐ

ᐱᓕᓕᓐ ᐱᓕᓕᓐᓂᓐᓂᓐ?

- ᐱᓕᓕᓐ ᐱᓕᓕᓐᓂᓐᓂᓐᓂᓐ ᐱᓕᓕᓐᓂᓐ ᐱᓕᓕᓐᓂᓐᓂᓐᓂᓐ ᐱᓕᓕᓐᓂᓐᓂᓐᓂᓐ

Kitikmeot Region

ᑭᑦᑎᑦᑭᑦᑭᑦᑭᑦ

Kitikmeotmi



Photo: Jennie Rausch © Environment Canada



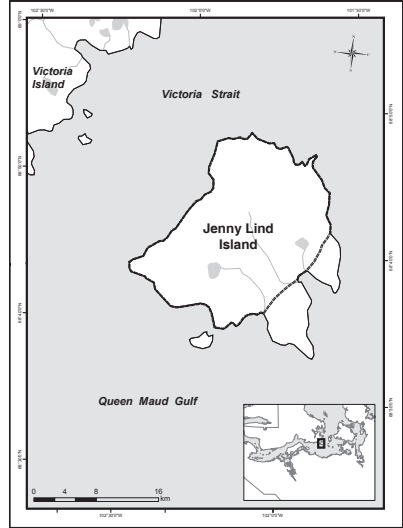
JENNY LIND ISLAND

**ᑭᑭᑲᑦᑲᑦᑲᑦ
QIKIQTAYUAQ**

Photo: © Tom Johnson



Snow Goose
ᑲᑭᑲᑦᑲᑦ
Kanguq



What is important here?

- High abundance of breeding geese
- Many breeding shorebirds

Why is it important?

- Key area for moulting geese

Special consideration

- Draft *West Kitikmeot Land Use Plan* recognizes the importance of the area for wildlife

ᑭᑭᑲᑦᑲᑦ ᐱᑦᑲᑲᑲᑦᑲᑦ ᑭᑲᑲᑦᑲᑦ

- ᑲᑲᑲᑦᑲᑦᑲᑦ ᐱᑲᑲᑦᑲᑦ ᑲᑲᑲᑦᑲᑦ
- ᑲᑲᑲᑦᑲᑦᑲᑦ ᐱᑲᑲᑦᑲᑦ ᑲᑲᑲᑦᑲᑦᑲᑦ ᑲᑲᑲᑦᑲᑦ

ᑲᑲᑲᑦᑲᑦ ᐱᑦᑲᑲᑲᑦᑲᑦ

- ᑲᑲᑲᑦᑲᑦᑲᑦ ᑲᑲᑲᑦᑲᑦ ᑲᑲᑲᑦᑲᑦᑲᑦᑲᑦ (ᑲᑲᑲᑦᑲᑦᑲᑦᑲᑦᑲᑦᑲᑦᑲᑦ ᑲᑲᑲᑦᑲᑦ)

ᑲᑲᑲᑦᑲᑦᑲᑦᑲᑦᑲᑦ ᑲᑲᑲᑦᑲᑦᑲᑦᑲᑦᑲᑦᑲᑦ

- ᑲᑲᑲᑦᑲᑦᑲᑦᑲᑦᑲᑦᑲᑦ ᐱᑦᑲᑲᑲᑦᑲᑦᑲᑦᑲᑦᑲᑦ ᑲᑲᑲᑦᑲᑦᑲᑦᑲᑦᑲᑦᑲᑦᑲᑦᑲᑦ ᐱᑦᑲᑲᑦᑲᑦᑲᑦ ᑲᑲᑲᑦᑲᑦᑲᑦᑲᑦ ᑲᑲᑲᑦᑲᑦᑲᑦᑲᑦᑲᑦᑲᑦ ᑲᑲᑲᑦᑲᑦᑲᑦᑲᑦᑲᑦᑲᑦ ᑲᑲᑲᑦᑲᑦᑲᑦᑲᑦᑲᑦᑲᑦ ᑲᑲᑲᑦᑲᑦᑲᑦᑲᑦᑲᑦᑲᑦ

Huna akhuurutauyuq hamani?

- Amihut ivayukhat kangut
- Amihut ivayukhat higyariat qupanuat

Huuq akhuurutauva?

- Akhuurutauyuq nunat kanguqnut ihatitlugit

Ihumagilluaqtauyuq

- Iniqhimaittuq Uataani Kitikmeot Nunannga Aturninga Havauhikhaq ilitariyaat akhuurutaungna tahamna nuna huratjanut

SOUTHWESTERN VICTORIA ISLAND

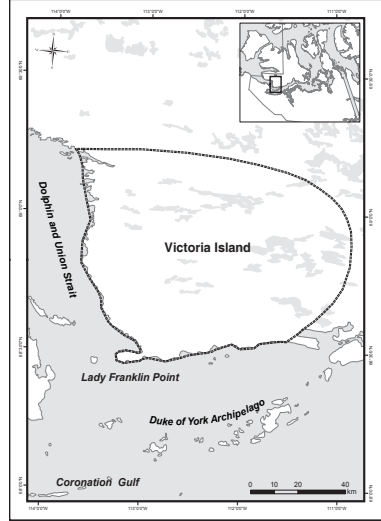
ᑎᑭᑏᑭᑦᑕᑦ ᑭᑏᑭᑦᑕᑦᑕᑦᑕᑦ ᑭᑏᑭᑦᑕᑦᑕᑦ

KANGIATA UATAANI KIILINIQ QIKIQTAQ



Canada Goose
ᑎᑭᑏᑭᑦᑕᑦ, ᑭᑏᑭᑦᑕᑦᑕᑦᑕᑦ
Uluagutlik

Photo: Charles Francis © Environment Canada



What is important here?

- High densities of breeding pairs of Canada Goose
- Many swans, gulls and terns
- Several species of shorebirds nest in the area

Why is it important?

- 8% of Canada's Canada Goose nest here

Special consideration

- Considerable prospecting and mining exploration in recent years

ᑕᑭᑏᑭᑦᑕᑦ ᑭᑏᑭᑦᑕᑦᑕᑦᑕᑦ

- ᑕᑭᑏᑭᑦᑕᑦ ᑭᑏᑭᑦᑕᑦᑕᑦᑕᑦᑕᑦ ᑎᑭᑏᑭᑦᑕᑦ ᑎᑭᑏᑭᑦᑕᑦᑕᑦᑕᑦ ᑎᑭᑏᑭᑦᑕᑦ
- ᑕᑭᑏᑭᑦᑕᑦ ᑎᑭᑏᑭᑦᑕᑦᑕᑦᑕᑦ ᑎᑭᑏᑭᑦᑕᑦᑕᑦᑕᑦ
- ᑕᑭᑏᑭᑦᑕᑦᑕᑦᑕᑦ ᑎᑭᑏᑭᑦᑕᑦᑕᑦᑕᑦ ᑎᑭᑏᑭᑦᑕᑦᑕᑦᑕᑦ ᑎᑭᑏᑭᑦᑕᑦᑕᑦᑕᑦ ᑎᑭᑏᑭᑦᑕᑦᑕᑦᑕᑦ

ᑕᑭᑏᑭᑦᑕᑦ ᑭᑏᑭᑦᑕᑦᑕᑦᑕᑦ

- 8%-ᑕᑭᑏᑭᑦᑕᑦ ᑭᑏᑭᑦᑕᑦᑕᑦᑕᑦ ᑎᑭᑏᑭᑦᑕᑦᑕᑦᑕᑦ ᑎᑭᑏᑭᑦᑕᑦᑕᑦᑕᑦ ᑎᑭᑏᑭᑦᑕᑦᑕᑦᑕᑦ

ᑕᑭᑏᑭᑦᑕᑦᑕᑦᑕᑦᑕᑦ ᑎᑭᑏᑭᑦᑕᑦᑕᑦᑕᑦᑕᑦ

- ᑕᑭᑏᑭᑦᑕᑦᑕᑦᑕᑦᑕᑦ ᑎᑭᑏᑭᑦᑕᑦᑕᑦᑕᑦᑕᑦᑕᑦ ᑎᑭᑏᑭᑦᑕᑦᑕᑦᑕᑦᑕᑦ ᑎᑭᑏᑭᑦᑕᑦᑕᑦᑕᑦᑕᑦ ᑎᑭᑏᑭᑦᑕᑦᑕᑦᑕᑦᑕᑦ ᑎᑭᑏᑭᑦᑕᑦᑕᑦᑕᑦᑕᑦ ᑎᑭᑏᑭᑦᑕᑦᑕᑦᑕᑦᑕᑦ

Huna akhuurutauyuq hamani?

- Inikhairutihimayut nuliuyut Ulluagullit
- Amihut qukyuit, nauyat imitqutailaitlu
- Qaffiuyt atlatqit hinaanirmiatat uplugit talvani

Huuq akhuurtauva?

- 8 pusantnguyuc Kanataup Ulluagullit uplugit hamani

Ihumagilluaqtauuyuq

- Amigaittut qinirhiayut uyarakhiuqtutlu nutaami ukiumi