



# Seasonal Outlook

Gulf of St Lawrence, East Newfoundland  
Waters and Labrador Coast

Winter 2019-2020

Issued by Canadian Ice Service of Environment and  
Climate Change Canada

3 December 2019



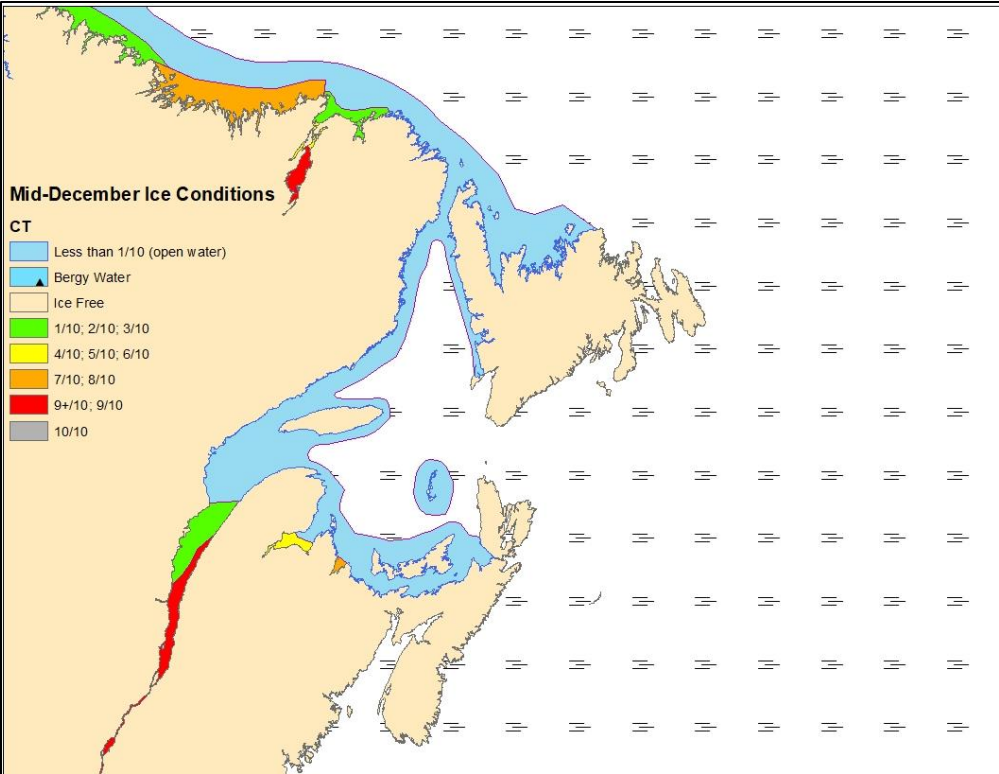


Figure 1: Expected ice conditions – mid-December 2019

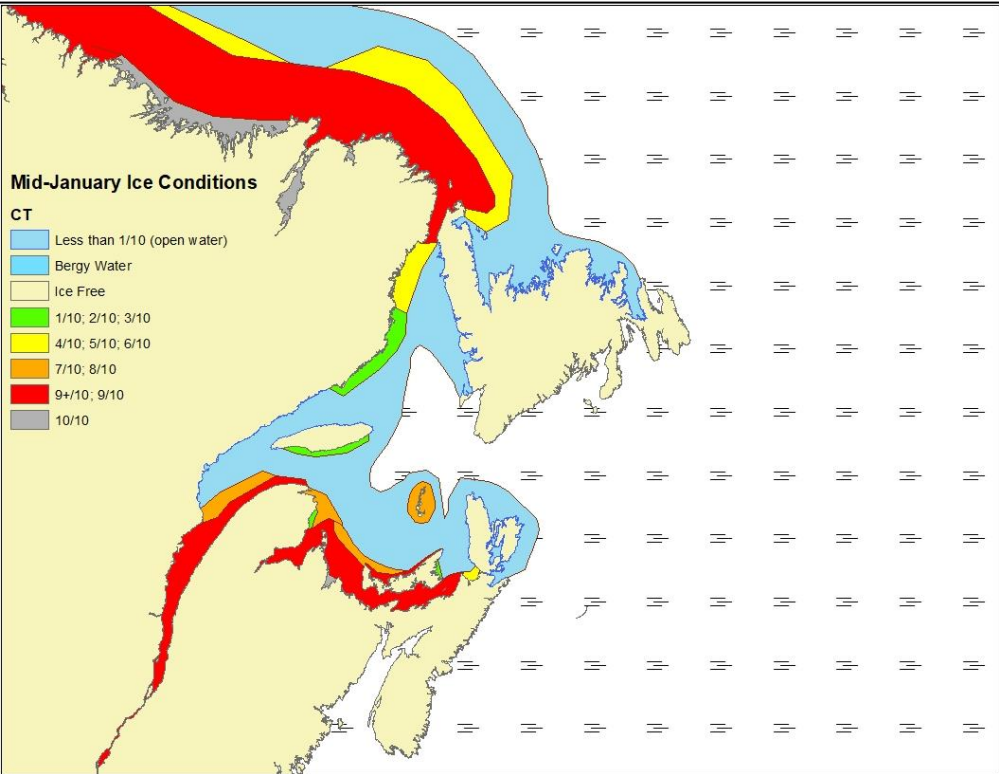
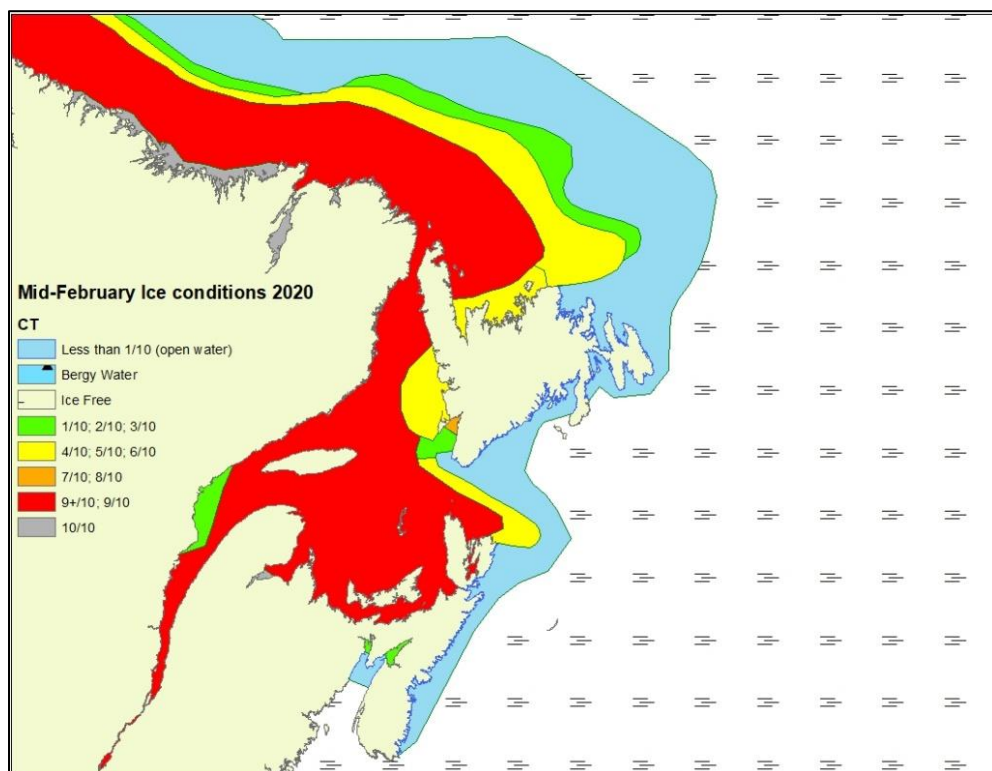


Figure 2: Expected ice conditions – mid-January 2020



**Figure 3: Expected ice conditions – mid-February 2020**

## **Gulf of St-Lawrence**

### **Winter temperature and ice forecasts**

The surface air temperature is expected to be below normal for the December-February time period for the Gulf.

### **The Estuary.**

#### **Outlook for December...**

December 3-15: Open water except 1-3 tenths of new and grey ice along sections of the shore.

December 16-31: Open water except 7-8 tenths new and grey ice in the western section.

#### **Outlook for January...**

January 1-10: 1-3 tenths new and grey ice except 9-9 plus tenths of grey ice over the western section.

January 11-21: 4-6 tenths new and grey ice except 9-9 plus tenths of grey ice over the western section. 9-9+ tenths grey ice along the southern shore.

January 22-31: 7-8 tenths new and grey ice except 9-9 plus tenths of grey and grey-white ice over the western section and along the southern shore.

#### **Outlook for February...**

February 1-14: 7-8 tenths of grey and grey-white ice except 9-9 plus tenths of grey-white and first-year ice over the western section.

February 15-28: 9 tenths of grey-white and first-year ice.

### **Chaleur Bay southward to Northumberland Strait.**

#### **Outlook for December...**

December 3-24: Open water except 7-8 tenths of new and grey ice in sheltered

bays and inlets.

December 25-31: Open water except 7-8 tenths of new and grey ice along the coast and in Northumberland Strait.

Outlook for January...

January 1-15: 7-8 tenths of new and grey ice near the coast except 9-9 plus of grey and grey-white ice over Northumberland Strait. Consolidated grey-white ice in sheltered bays and inlets.

January 16-31: 9-9 plus tenths of grey and grey-white ice except 9-9 plus tenths of grey-white ice in Northumberland Strait. Consolidated first-year ice in sheltered bays and inlets.

Outlook for February...

February 1-28: 9-9 plus tenths of grey-white and first-year ice. Consolidated first-year ice in sheltered bays and inlets.

### **West coast of Newfoundland.**

Outlook for December...

December 3-31: Open water.

Outlook for January...

January 1-14: Open water except consolidated grey ice in sheltered bays and inlets. 1-3 tenths of grey ice near the Port au Port peninsula.

January 15-31: Bergy water except 9-9 plus tenths of grey and grey-white ice along the coast in the extreme northern section and near the Port au Port peninsula. Consolidated grey-white ice in sheltered bays and inlets.

Outlook for February...

February 1-7: Bergy water except 7-8 tenths grey and grey-white ice in the northern section. 9-9+ tenths grey-white ice along parts of the coast. Consolidated grey-white ice in sheltered bays and inlets.

February 8-15: 1-3 tenths grey ice in the southeastern section south of the Port-au-Port peninsula. 9-9 plus tenths grey-white and first-year ice elsewhere.

### **North Shore of Quebec.**

Outlook for December...

December 3-31: Open water except isolated patches of new ice along the shore. Consolidated grey ice in sheltered bays and inlets.

Outlook for January...

January 1-10: Open water except 4-6 tenths of new and grey ice extending 15 along the shore.

January 11-20: Open water except 7-8 tenths of new and grey ice extending 20 nautical miles from shore.

January 21-31: Open water except 9-9 plus tenths of grey and grey-white ice extending 20-30 nautical miles from shore.

Outlook for February...

February 1-10: 9-9 plus tenths grey and grey-white ice.

February 11-28: 9-9 plus tenths of grey-white and first-year ice.

### **Elsewhere.**

Outlook for December...

December 3-9: ice free to open water.

December 10-31: Ice free to open water except for isolated areas of new and grey ice near the Îles de la Madeleine and in sheltered bays along the north shore of Prince Edward Island and along Anticosti island.

Outlook for January...

January 1-20: Ice free to open water except isolated areas of 4-6 tenths of new and grey ice near Anticosti Island and the Îles de la Madeleine.

January 21-31: Open water except 7-8 tenths of grey ice near the Îles de la Madeleine and along sections of Anticosti Island. 7-8 tenths new and grey ice west of the Îles de la Madeleine.

Outlook for February...

February 1-21: 1-3 tenths new and grey ice except 9-9 plus tenths of grey and grey-white ice near the Îles de la Madeleine and northward and westward.

February 22-28: 4-6 tenths grey ice except 9-9 plus of grey-white ice and first-year ice near the Îles de la Madeleine and northward and westward.

## **East Newfoundland Waters and Labrador Coast.**

### **Winter temperature and ice forecasts.**

Average air temperatures are expected to be above normal for December to February over the East Newfoundland Waters. Above normal temperatures are forecast along the Labrador coast. Near normal ice conditions are forecast.

### **Labrador Coast and Strait of Belle Isle.**

Outlook for December...

December 3-20: Bergy water except 4-6 tenths of new and grey ice along the coast near Cartwright and northward.

December 21-31: Bergy water except 9-9 plus tenths of grey and grey-white ice extending 20 nautical miles from the coast near Port Hope Simpson and northward along the coast. 1-3 tenths of new and grey ice in the Strait of Belle Isle.

Outlook for January...

January 1-15: 9-9 plus tenths of grey-white and first-year ice extending 100 nautical miles from the coast from Port Hope Simpson and northward. 9-9 plus tenth of grey and grey-white ice extending south of Port Hope Simpson and into the Strait of Belle Isle.

January 16-31: 9-9 plus tenths of grey-white and first-year ice extending 100 nautical miles from the coast from Port Hope Simpson and northward. 9-9 plus tenths of grey and grey-white ice extending 80 nautical miles from the coast from Port Hope Simpson to the Strait of Belle Isle.

Outlook for February...

February 1-14: 9-9 plus tenths of first-year ice including a trace of old ice extending 120 nautical miles from the Labrador coast. 9-9 plus tenths of grey and grey-white ice in the Strait of Belle Isle.

February 15-28: 9-9 plus tenths of first-year ice including a trace of old ice extending 150 nautical miles from the Labrador coast. 9-9 plus tenths of first-year ice in the Strait of Belle Isle.

### **Lake Melville.**

Outlook for December...

December 3-7: 1-3 tenths new and grey ice.

December 8-15: 9-9 plus tenths grey and grey white ice.

December 8-24: 9-9 plus tenths of grey-white and first-year ice. Consolidated grey-white ice and first-year ice in the western section.

December 25-31: Consolidated grey-white and first-year ice.

Outlook for January...

January 1-31: Consolidated first-year ice.

Outlook for February:

February 1-28: Consolidated first-year ice.

## **Newfoundland.**

Outlook for December...

December 3-9: Open water.

December 10-31: Open water to ice free except 4-6 tenths of new and grey ice in isolated bays and inlets.

Outlook for January...

January 1-15: Open water except 4-6 tenths of new and grey ice in isolated bays along the coast. 1-3 tenths of new and grey ice near the tip of the Northern peninsula.

January 16-31: 7-8 tenths of grey and grey-white ice east of the Northern peninsula and more than 50 nautical miles from the Northeast Coast. Consolidated grey-white ice in isolated bays and inlets.

Outlook for February...

February 1-14: 9-9 plus tenths of grey and grey-white ice extending 150 nautical miles from the coast from Cape Freels and northward. Consolidated grey-white ice in isolated bays and inlets.

February 15-28: 9-9 plus tenths of grey-white and first-year ice with a trace of old ice extending 180 nautical miles from the coast from Cape Freels and northwards. 4-6 tenths grey and grey-white ice in and northeast of Bonavista Bay. Consolidated first-year ice in isolated bays and inlets.