



Fisheries and Oceans  
Canada

Pêches et Océans  
Canada

Canadian  
Coast Guard

Garde côtière  
canadienne

# Notices to Mariners

**Edition No. 10/2021**  
**October 29, 2021**



Safety First, Service Always

## Monthly Eastern Edition

Canada 

Notices to Mariners – Monthly Eastern Edition  
Edition No. 10/2021

Aussi disponible en français :  
Avis aux navigateurs – Édition mensuelle de l'Est  
Édition n° 10/2021

**Published under the Authority of:**

Canadian Coast Guard Programs  
Aids to Navigation and Waterways  
Fisheries and Oceans Canada  
Montreal, QC H2Y 2E7

For more information, contact [Notmar.XNCR@dfo-mpo.gc.ca](mailto:Notmar.XNCR@dfo-mpo.gc.ca).

© Her Majesty the Queen in Right of Canada,  
as represented by the Minister of Fisheries, Oceans  
and the Canadian Coast Guard, 2021.

Cat. No. Fs152-5E-PDF (Electronic PDF, English)  
ISSN 1719-7678

Cat. No. Fs152-5F-PDF (Electronic PDF, French)  
ISSN 1719-7694

A web version is available here:

<https://www.notmar.gc.ca/monthly-mensuel-en.php> (English)

<https://www.notmar.gc.ca/monthly-mensuel-fr.php> (French)

## Explanatory Notes – Notices to Mariners (NOTMAR)

**Geographical positions** refer directly to the graduations of the largest scale Canadian Hydrographic Service chart (unless otherwise indicated).

**Bearings** refer to the true compass and are measured clockwise from 000° (North) clockwise to 359°; those relating to lights are from seaward.

**Visibility** of lights is that in clear weather.

**Depths** - The units used for soundings (metres, fathoms or feet) are stated in the title of each chart.

**Elevations** are normally given above Higher High Water, Large Tide (unless otherwise indicated).

**Distances** may be calculated as follows:

- 1 nautical mile = 1,852 metres (6,076.1 feet)
- 1 statute mile = 1,609.3 metres (5,280 feet)
- 1 metre = 3.28 feet

### Temporary and Preliminary Notices to Mariners – Section 1A of *Notices to Mariners*

These notices are indicated by a (T) or a (P), respectively. Please note that nautical charts are not amended by the Canadian Hydrographic Service for temporary (T) and preliminary (P) notices. It is recommended that mariners chart these corrections in pencil. For the list of charts affected by (T) & (P) notices, please refer to the current [Notices to Mariners - Monthly Summary of Temporary and Preliminary Notices](#) publication.

### Suggestions and Corrections Form

This form is specifically for suggestions and corrections to Notices to Mariners publications. It is available [online](#) and also in [fillable PDF format](#) included with the monthly publication ZIP file.

To report chart discrepancies and/or corrections to the *Sailing Directions* booklets: Fill out the [Marine Information Reporting Form](#) and/or email [chsinfo@dfo-mpo.gc.ca](mailto:chsinfo@dfo-mpo.gc.ca).

To report emergencies or navigational hazards: [Contact your nearest MCTS centre](#)

- VHF channel 16 (156.8 MHz)
- MF/HF frequency 2182 kHz/4125 kHz (where available)
- \*16 on a cellphone (where available)

### NOTMAR Website – Monthly Editions, Chart Corrections and Chart Patches

The NOTMAR website allows users to access the [monthly publications](#), [chart corrections](#), and [chart patches](#).

Users can subscribe for free to the [email notification service](#) to receive notifications when charts of interest are updated, including their patches, as well as when a new Monthly Edition of *Notices to Mariners* is published.

In addition, the monthly publication and related files to download, such as chart patches and *Sailing Directions* diagrams, can be obtained all together through the download of a single ZIP file.

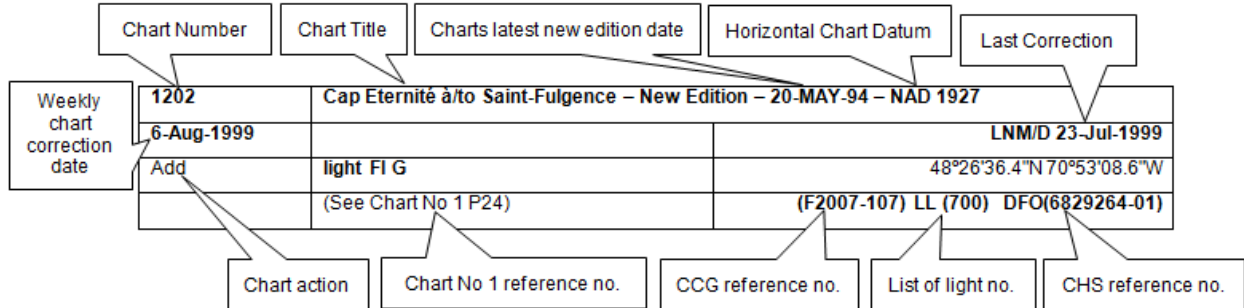
## Explanatory Notes – Canadian Hydrographic Service (CHS)

### Chart Corrections – Section 2 of *Notices to Mariners*

Corrections to nautical charts will be listed in numerical order by chart number. Each chart correction listed applies only to that particular chart. Related charts, if any, will have their own specific correction listed separately.

Users should also refer to CHS *Chart 1: Symbols, Abbreviations and Terms* for additional information pertaining to the correction of charts.

The illustration below describes the elements that will comprise a typical Section 2 chart correction:



The last correction number is identified with the **LNMD** or **Last Notice to Mariners Number / Date**.

Mariners are advised that only the most critical changes that directly affect safety to navigation are issued in “Section 2 – Chart Corrections.” This limitation is required to ensure that charts remain as clear and easy to read as possible. As a result, mariners may see minor discrepancies of a non-critical nature between information in official publications. For example, a small change in the nominal range or focal height of a light may not result in the production of a chart correction in *Notices to Mariners*, but may result in a correction in the [List of Lights, Buoys and Fog Signals](#) publication.

**Note:** In the case of a discrepancy between information provided on CHS charts relating to aids to navigation, and the *List of Lights, Buoys and Fog Signals* publication, the latter shall be deemed as containing the most up-to-date information.

### Canadian Nautical Charts & Publications

A source list of Canadian nautical charts and publications is published in Notice No. 14 of the *Notices to Mariners Annual Edition 2021*. The source supply and the prices effective at the time of printing are listed. For current chart edition dates, please refer to the following website: [www.chs-shc.gc.ca/charts-cartes/paper-papier/index-eng.asp](http://www.chs-shc.gc.ca/charts-cartes/paper-papier/index-eng.asp).

## Explanatory Notes – Marine Communications and Traffic Services (MCTS)

### Navigational Warnings / Notices to Shipping

The Canadian Coast Guard (CCG) is implementing a number of changes to the aids to navigation system in Canada.

These changes are advertised as Navigational Warnings, formerly called Notices to Shipping<sup>1</sup>, that are broadcast by the CCG, and are then followed up with Notices to Mariners, then charts are updated by hand correction, reprints or new editions.

Mariners are advised that all relevant Navigational Warnings (NAVWARN) should be kept until superseded by Notices to Mariners or through revised charts issued by the Canadian Hydrographic Service (CHS).

NAVWARN are accessible on the applicable regional page on the CCG Navigational Warnings website at <http://nis.ccg-gcc.gc.ca>.

CHS is reviewing the impact of these changes with CCG and together are preparing an action plan on the issuing of chart revisions.

For further information, contact your regional NAVWARN Issuing Desk.

<p><b>Atlantic Region (North)</b> <b>*Port aux Basques MCTS Centre</b></p> <p>“N” Series NAVWARN</p> <p>Canadian Coast Guard 49 Stadium Rd. P.O. Box 99 Port aux Basques, NL A0M 1C0</p> <p>Telephone: 709-695-2168 or 1-800-563-9089 Facsimile: 709-695-7784</p> <p>Email: <a href="mailto:NAVWARN.MCTSPortAuxBasques@innav.gc.ca">NAVWARN.MCTSPortAuxBasques@innav.gc.ca</a></p>	<p><b>Central Region</b> <b>*Prescott MCTS Centre</b></p> <p>“Q” and “C” Series NAVWARN</p> <p>Canadian Coast Guard 401 King Street West P.O. Box 1000 Prescott, ON K0E 1T0</p> <p>Telephone: 613-925-0666 Facsimile: 613-925-4519</p> <p>Email: <a href="mailto:NAVWARN.MCTSPrescott@innav.gc.ca">NAVWARN.MCTSPrescott@innav.gc.ca</a></p>
<p><b>Atlantic Region (South)</b> <b>*Sydney MCTS Centre</b></p> <p>“M” Series NAVWARN</p> <p>Canadian Coast Guard 1190 Westmount Road Sydney, NS B1R 2J6</p> <p>Telephone: 902-564-7751 or 1-800-686-8676 Facsimile: 902-564-7662</p> <p>Email: <a href="mailto:NAVWARN.MCTSSydney@innav.gc.ca">NAVWARN.MCTSSydney@innav.gc.ca</a></p>	<p><b>Arctic Region</b> <b>*Iqaluit MCTS Centre</b></p> <p><i>Operational from approximately mid-May until late December.</i></p> <p>“A” and “H” Series NAVWARN</p> <p>Canadian Coast Guard P.O. Box 189 Iqaluit, NU X0A 0H0</p> <p><u>“A” Series NAVWARN</u> Telephone: 867-979-5269</p> <p><u>“H” Series NAVWARN</u> Telephone: 867-979-0310 Facsimile: 867-979-4264</p> <p>Email: <a href="mailto:NAVWARN.MCTSIqaluit@innav.gc.ca">NAVWARN.MCTSIqaluit@innav.gc.ca</a></p>

\*Service available in English and in French.

<sup>1</sup> The expression “Notice to Shipping” was changed to “Navigational Warning” in January 2019.

## Table of Contents

<b>Section 1: General and Safety Information</b>	<b>1</b>
Canadian Coast Guard Publication – Comments and Suggestions on Notices to Mariners (NOTMAR) Publications .....	1
Transport Canada – COVID-19 Measures, Updates and Guidance.....	1
Gulf of St. Lawrence – Protection of the North Atlantic Right Whale .....	1
Saguenay–St. Lawrence Marine Park - Beluga Whale Protection: Slowdown Area at the Mouth of the Saguenay Fjord and Area Closure at Baie Sainte-Marguerite.....	8
Saguenay-St. Lawrence Marine Park and Surrounding Waters – Whale Protection .....	11
*1001/21 Canadian Hydrographic Service – Nautical Charts.....	12
*1002/21 Canadian Hydrographic Service – Electronic Navigational Charts.....	13
*1003/21 Canadian Hydrographic Service – Raster Digital Charts (BSB V3).....	13
*1004/21 Canadian Coast Guard Publication – Amendments to Notices to Mariners Annual Edition 2021 - Section C, Notice 27A: Guidelines for the Transit of Wide-Beam Vessels and Long Vessels .....	14
*1005/21 Canadian Coast Guard Publication – Amendments to the <i>List of Lights, Buoys and Fog Signals</i> Publication: Pacific Coast .....	14
*1006/21 Long Point Bay – Unlit Buoy Repositioned .....	14
*1007/21 Strait of Canso – Unlit Buoy Repositioned .....	14
<b>Section 1A: Temporary and Preliminary Notices</b>	<b>15</b>
Reminder – Comment Period for Active Preliminary Notices .....	15
<b>Section 2: Chart Corrections</b>	<b>16</b>
<b>Section 3: Radio Aids to Marine Navigation Corrections</b>	<b>38</b>
*1008/21 Radio Aids to Marine Navigation 2021 (Atlantic, St. Lawrence, Great Lakes, Lake Winnipeg, Arctic and Pacific).....	38
<b>Section 4: Sailing Directions and Small Craft Guide Corrections</b>	<b>39</b>
<b>Section 5: List of Lights, Buoys and Fog Signals Corrections</b>	<b>41</b>

## Numerical Index of Canadian Charts Affected

This numerical index lists all nautical charts mentioned in this monthly edition of Notices to Mariners. Only charts appearing in Section 2 of this publication require a chart correction. The appearance of charts in all other sections, particularly those related to the correction of other nautical publications, is included here for reference.

Chart No.	Pages	Chart No.	Pages	Chart No.	Pages
1314	<a href="#">16</a>	4509	<a href="#">42</a>	5179	<a href="#">36, 42</a>
1315	<a href="#">16</a>	4530	<a href="#">31, 43</a>	6021	<a href="#">36</a>
1351	<a href="#">16, 17</a>	4615	<a href="#">31, 41, 42</a>	6211	<a href="#">36</a>
2110	<a href="#">14, 17</a>	4616	<a href="#">42</a>	6214	<a href="#">36, 47</a>
2120	<a href="#">17</a>	4619	<a href="#">31, 41</a>	8007	<a href="#">36, 37</a>
4000	<a href="#">17</a>	4622	<a href="#">32</a>		
4001	<a href="#">17, 18</a>	4624	<a href="#">32</a>		
4003	<a href="#">18, 19</a>	4644	<a href="#">42</a>		
4006	<a href="#">19</a>	4653	<a href="#">32, 42</a>		
4013	<a href="#">20</a>	4654	<a href="#">32, 42</a>		
4016	<a href="#">21</a>	4661	<a href="#">32</a>		
4021	<a href="#">21</a>	4832	<a href="#">33, 42</a>		
4022	<a href="#">21</a>	4839	<a href="#">33, 41</a>		
4045	<a href="#">21, 22</a>	4843	<a href="#">41</a>		
4098	<a href="#">22, 23, 24</a>	4845	<a href="#">33, 44</a>		
4099	<a href="#">24, 25</a>	4847	<a href="#">33</a>		
4116	<a href="#">25</a>	4848	<a href="#">33, 44</a>		
4118	<a href="#">15</a>	4850	<a href="#">15, 43</a>		
4141	<a href="#">25, 26</a>	4851	<a href="#">43</a>		
4201	<a href="#">26, 44</a>	4853	<a href="#">43</a>		
4202	<a href="#">26</a>	4854	<a href="#">33, 43</a>		
4203	<a href="#">26, 44</a>	4855	<a href="#">43</a>		
4236	<a href="#">15</a>	4862	<a href="#">33, 43</a>		
4237	<a href="#">27</a>	4913	<a href="#">46</a>		
4266	<a href="#">27, 28, 44</a>	4920	<a href="#">45, 46</a>		
4302	<a href="#">14</a>	4921	<a href="#">34</a>		
4379	<a href="#">15</a>	4935	<a href="#">47</a>		
4394	<a href="#">15</a>	4938	<a href="#">34, 45</a>		
4404	<a href="#">28</a>	4940	<a href="#">12</a>		
4419	<a href="#">28</a>	4950	<a href="#">34</a>		
4426	<a href="#">29, 30, 46</a>	4956	<a href="#">34, 35</a>		
4445	<a href="#">12</a>	5023	<a href="#">35</a>		
4449	<a href="#">30, 31, 44</a>	5032	<a href="#">42</a>		
4468	<a href="#">12</a>	5164	<a href="#">35</a>		
4483	<a href="#">12</a>	5165	<a href="#">36</a>		

## Section 1: General and Safety Information

---

### Canadian Coast Guard Publication – Comments and Suggestions on Notices to Mariners (NOTMAR) Publications

In an effort to continuously improve the Notices to Mariners publications and to provide the most efficient service possible, the Notices to Mariners team invites all mariners and other interested parties to submit comments and suggestions on possible improvements to its various publications and services at the following email address: [Notmar.XNCR@dfo-mpo.gc.ca](mailto:Notmar.XNCR@dfo-mpo.gc.ca).

### Transport Canada – COVID-19 Measures, Updates and Guidance

(Recurrent publication of notice \*401/20, originally published in the *Notices to Mariners – Monthly Eastern Edition 04/2020* publication.)

Please refer to the link below for the latest updates to transportation related measures taken by Transport Canada in response to the evolving novel Coronavirus disease (COVID-19):

<https://www.tc.gc.ca/en/initiatives/covid-19-measures-updates-guidance-tc.html>.

For travel advice and all other updates, please visit: [Canada.ca/coronavirus](https://Canada.ca/coronavirus).

### Gulf of St. Lawrence – Protection of the North Atlantic Right Whale

(Recurrent publication of notice \*405/21, originally published in the *Notices to Mariners – Monthly Eastern Edition 04/2021* publication.)

#### Purpose

This notice describes the speed restriction zones that vessels must follow in the Gulf of St. Lawrence.

The Government of Canada has established these zones to reduce the risk of vessel collisions with North Atlantic right whales (NARW).

#### Context

Due to changing migration patterns of North Atlantic right whales and their increased presence in the Gulf of St. Lawrence, the Government of Canada has established seasonal speed restrictions in specific zones. These speed restriction zones are defined as “static zones”, “dynamic shipping zones”, “seasonal management areas”, a trial “voluntary speed restriction zone” and a “restricted area”. [See the map below for details](#).

Note: Navigational Warnings outlining the speed restrictions are considered to be Notices to Shipping, which vessels **must follow**. The *Interim Order for the Protection of North Atlantic Right Whales (Eubalaena Glacialis) in the Gulf of St. Lawrence, 2021* enables the issuance of Navigational Warnings (NAVWARN) imposing speed restrictions or navigation restrictions.

Speed restriction zones are described in monthly Notices to Mariners (NOTMAR), which are published by the Canadian Coast Guard (CCG). The status of these zones are broadcast through NAVWARN, which are published by the CCG's Marine Communications and Traffic Services (MCTS) Centres.

#### Changes to speed restriction zones and measures

Based on consultations with industry and on scientific data, changes to the speed restriction zones will be effective from April 28, 2021, while the restricted area will be implemented based on whale presence:

- For a second consecutive year, a trial voluntary slowdown of 10.0 knots over the ground spanning from Cabot Strait (a line running from Cape North NS to Cape Ray NL) to the eastern edge of dynamic shipping zone E will be implemented at the beginning and end of the North Atlantic right whale season.



- Again this year, a restricted area located in and near Shediac Valley. The location and size are both based on historical data of North Atlantic right whale aggregations, while the triggering mechanism is based on in-season detections.
- As of this year, the 36.57 m (20-fathom) shallow water protocol will apply to all commercial fishing vessels.

Please refer to the latest NAVWARN issued by the CCG-MCTS for all speed restrictions currently in effect.

### **Speed Restriction Measures for 2021**

These restrictions will be in effect from **April 28 to November 15, 2021**.

#### **Exemption**

The following exemption will apply to all measures:

- A vessel in distress or providing assistance to a person or a vessel in distress.

#### **Static zones**

In the static zones, **all** vessels above **13 m** in length overall (LOA) must proceed at a speed of not more than 10.0 knots over the ground.

#### **Exceptions**

Air cushion vessels operated by or on behalf of the Government of Canada that are engaged in ice-clearing activities from April to June in and around Chaleur Bay are exempted when in operation.

#### **36.57 m (20-fathom) shallow water protocol**

Vessels engaged in any commercial fishing activity may proceed at a safe operational speed in waters not more than 36.57 m (20 fathom) deep.

If a notice to fish harvesters states that at least one right whale has been detected within a static zone in waters that are not more than 36.57 m deep, the 10 knots speed limit will apply to all vessels above 13 m in length overall (LOA) 15 days after the day on which the notice comes into effect.

If a new notice to fish harvesters with the same statement is published or broadcast during the last seven days of the 15-day period, the speed limit will continue to apply for a further 15 days after the day on which the new notice comes into effect.

#### **Coordinates for the northern static zone:**

- 50° 20' N 065° 00' W
- 49° 13' N 065° 00' W
- 48° 40' N 064° 13' W
- 48° 40' N 062° 40' W
- 48° 03' N 061° 07.5' W
- 47° 58.1' N 061° 03.5' W
- 48° 00' N 061° 00' W
- 49° 04' N 061° 00' W
- 49° 04' N 062° 00' W
- 49° 43' N 063° 00' W
- 50° 20' N 063° 00' W

#### **Coordinates for the southern static zone:**

- 48° 40' N 065° 00' W
- 48° 40' N 062° 40' W
- 48° 03' N 061° 07,5' W
- 47° 58.1' N 061° 03,5' W
- 47° 10' N 062° 30' W
- 47° 10' N 065° 00' W

## Dynamic shipping zones

There are five dynamic shipping zones (DSZ) located in the routing systems north and south of Anticosti Island: A, B, C, D and E

### Coordinates for the dynamic shipping zones:

#### Zone A

- 49° 41' N, 065° 00' W
- 49° 20' N, 065° 00' W
- 49° 11' N, 064° 00' W
- 49° 22' N, 064° 00' W

#### Zone B

- 49° 22' N, 064° 00' W
- 49° 11' N, 064° 00' W
- 48° 48' N, 063° 00' W
- 49° 00' N, 063° 00' W

#### Zone C

- 49° 00' N, 063° 00' W
- 48° 48' N, 063° 00' W
- 48° 24' N, 062° 00' W
- 48° 35' N, 062° 00' W

#### Zone D

- 50° 16' N, 064° 00' W
- 50° 00' N, 064° 00' W
- 49° 56' N, 063° 00' W
- 50° 16' N, 063° 00' W

#### Zone E

- 48° 35' N 062° 00' W
- 48° 24' N 062° 00' W
- 48° 03' N 061° 07.5' W
- 47° 58.1' N 061° 03.5' W
- 48° 00' N 061° 00' W
- 48° 10.5' N 061° 00' W

When the Government of Canada detects a North Atlantic right whale in a dynamic shipping zone:

- All vessels will be notified via a NAVWARN; and
- Vessels above 13 m in length overall (LOA) must proceed at a speed of not more than 10.0 knots over the ground within that zone.

### Speed restrictions in the dynamic shipping zones

The detection of North Atlantic right whales in one or more dynamic shipping zone(s), will trigger a speed restriction in the concerned zone(s). The speed restriction in the dynamic shipping zone(s) will be in effect for 15 days from the date of issuance of the NAVWARN. The speed restriction may be extended for an additional 15 days from the date that a new NAVWARN comes into effect, if North Atlantic right whales continue to be detected during the last 7 days of the 15-day slowdown period.

When a NAVWARN is issued implementing a speed restriction in one or more dynamic shipping zone(s), vessels above **13 m** in length (LOA) must not exceed a speed of 10.0 knots over the ground.

Within any zone that is not subject to a speed restriction, mariners may proceed at a safe operational speed. Mariners are encouraged to take into consideration the potential for their vessel striking North Atlantic right whales when considering a “safe operational speed” during navigation.

### Seasonal management areas

Seasonal management area 1 (SMA-1) and seasonal management area 2 (SMA-2) are speed restriction areas located north and south of dynamic shipping zone E, respectively.

Within seasonal management areas, vessels above **13 m** in length (LOA):

- must restrict their speed so as not to exceed 10.0 knots over the ground from April 28 to June 29, 2021; and
- are allowed to proceed at a safe operational speed from June 30 to November 15, 2021, unless a North Atlantic right whale is detected. If a whale is detected, a speed restriction of 10.0 knots over the ground will be triggered for 15 days from the date of issuance of the NAVWARN. The speed restriction may be extended for an additional 15 days from the date that a new NAVWARN comes into effect, if North Atlantic right whales continue to be detected during the last 7 days of the 15-day slowdown period.

**Coordinates for the SMA-1:**

- 49° 04' N 062° 00' W
- 49° 04' N 061° 00' W
- 48° 10.5' N 061° 00' W
- 48° 35' N 062° 00' W

**Coordinates for the SMA-2:**

- 48° 24' N 062° 00' W
- 48° 03' N 061° 07.5' W
- 47° 58.1' N 061° 03.5' W
- 47° 26.69' N 062° 00' W

**Restricted area**

In the summer months, an important proportion of the total North Atlantic right whale population gathers for feeding and surface activity near the [Shediac Valley](#). Since this makes the North Atlantic right whale more susceptible to vessel collisions, a mandatory restricted area will be implemented in and near the [Shediac Valley](#) and will come into force once 80% of the restricted area is closed to fishing for the season as per [the Department of Fisheries and Oceans's right whale closure protocol](#). The restricted area will be lifted once the North Atlantic right whale detections decrease in the restricted area or at the latest on August 31, 2021.

The size and location of the area is determined based on historical detection data of North Atlantic right whales. All necessary details can be found in the Interim Order. Triggering and lifting of the restricted area will be communicated to mariners through a NAVWARN and notice to fish harvesters.

Vessels above **13 m** in length (LOA) will be required to:

- avoid the area unless they are part of the exceptions listed in the Interim Order;
- transit the area at a speed not exceeding 8.0 knots over the ground if they are included in the exception list.

The following exceptions will apply to the restricted area. Vessels listed can travel through the area at not more than 8.0 knots over the ground:

- A vessel being used for commercial fishing;
- A vessel being used for fishing under the authority of a licence issued under the Aboriginal Communal Fishing Licences Regulations;
- A vessel being used for research purposes on behalf of the Government of Canada
- A vessel being used as part of the Department of Fisheries and Oceans' Marine Mammal Response Program to assist a marine mammal or sea turtle in distress or to access or retrieve a deceased marine mammal or sea turtle;
- A vessel authorized by the Government of Canada to retrieve or identify the location of abandoned or lost fishing gear;
- A vessel involved in pollution response operations;
- A vessel avoiding immediate or unforeseen danger;
- A vessel being used to conduct geophysical or geotechnical surveys or related activities as part of a project, which the Minister of Fisheries and Oceans has reviewed, to lay electrical or communication cables;
- A vessel involved in research relating to right whales as part of a project that has received funding from the Government of Canada.

The following vessels can travel through the restricted area at a speed over 8.0 knots, but below 10.0 knots over the ground as required by the static speed restriction zone:

- A vessel being used by an employee of the Government of Canada or peace officer who is performing their duties.

The location and size of the restricted area will not be modified during the season.

**Coordinates for the restricted area:**

- 48°31.8' N 063°39.6' W
- 48°24.72' N 063°17.88' W
- 47°18.84' N 064°10.8' W
- 47°27.18' N 064°30.72' W

**Inclement weather exception**

Mariners will be notified in advance via a NAVWARN should the speed restriction status change in any zone or area, due to inclement weather.

Within any zone or area that is not subject to a speed restriction due to adverse weather conditions for example, mariners may proceed at a safe operational speed. Mariners are however encouraged to take into consideration the potential for their vessel striking North Atlantic right whales when considering a “safe operational speed” during navigation.

\*Non-excepted vessels are still prohibited from transiting through the restricted area.

**Trial voluntary slowdown in Cabot Strait**

To coincide with the North Atlantic right whales entering and exiting the Gulf of St. Lawrence in large numbers, a trial voluntary slowdown is being put in place for the second year in Cabot Strait from April 28 to June 29, 2021, and from September 29 to November 15, 2021.

- During these periods, vessels above 13 m in length (LOA) are requested to voluntarily reduce their speed so as to not exceed 10.0 knots over the ground.

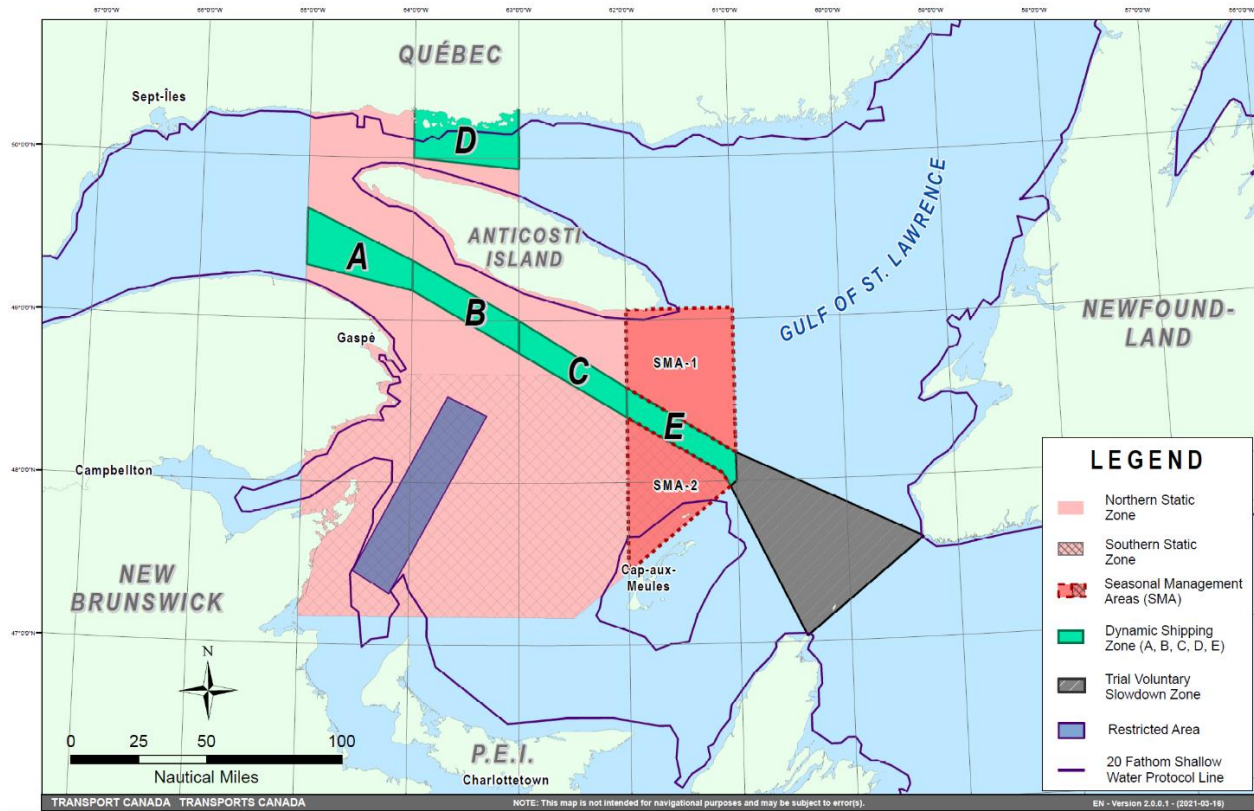
**Voluntary slowdown zone coordinates:**

- 48° 10.5' N 061° 00' W
- 47° 37.2' N 059° 18.5' W
- 47° 02' N 060° 23.7' W
- 47° 58.1' N 061° 03.5' W
- 48° 00' N 061° 00' W

**Map of the Gulf of St. Lawrence**

The following map shows

- the static zones, in pink;
- the dynamic shipping zones, in green;
- the seasonal management areas, in dark pink;
- the trial voluntary slowdown zone, in grey;
- the restricted area, in dark blue; and
- the 36.57 m (20 fathom) shallow water protocol line.



Map showing the two static zones (north and south), the five dynamic shipping zones (A, B, C, D and E), the seasonal management areas, the restricted area, the trial voluntary slowdown zone and the 36.57 m (20 fathom) shallow water protocol line.

This map is for visual representation only and is not to be used for navigation or enforcement.

### NAVWARN broadcasts

The CCG-MCTS issues and publishes NAVWARN:

- by radio broadcast; and
- online at [Canada's Maritime Information Portal](#) and its [Navigational Warnings](#) site.

Mariners must ensure they have accurate and up-to-date information about the protection of the North Atlantic right whale, as in all applicable NOTMAR and NAVWARN.

For the North Atlantic right whale speed restrictions, the NAVWARN(s) currently in effect will be provided to vessels subject to the *Vessel Traffic Services Zone Regulations* or the *Eastern Canada Vessel Traffic Services Zone Regulations*:

### Outbound vessels

- at Calling-in-Point 10 (St-Laurent); or
- upon a departure downstream from the Quebec pilot station (including the Saguenay River, Chaleur Bay, Miramichi Bay, etc.)

### Inbound vessels

- when a clearance to enter Canadian waters is granted

### **Vessels in transit**

- at the last reporting point prior to entering the mandatory speed restriction zones; and/or
- at 10 nautical miles prior to entering the mandatory speed restriction zones

For those vessels not subject to the above-mentioned regulations, vessel operators are required to monitor broadcasts by the Canadian Coast Guard's Marine Communications and Traffic Services (MCTS) network for the most up to date information. For marine radio frequencies and broadcast times, information may be found in the [Radio Aids to Marine Navigation](#) publication.

### **Aids to navigation**

The Canadian Coast Guard is currently testing virtual Automatic Identification System (AIS) aids to navigation (AIS AtoN) in specific areas, NOTMAR 208(T)/2021 refers. These aids notify mariners of a dynamic shipping zone and/or a seasonal management area subject to a speed restriction.

Each zone is delimited by four to six virtual AIS AtoN, which can be displayed on a ship's navigation equipment, such as

- Electronic Chart Display and Information System (ECDIS);
- Electronic Chart System (ECS);
- RADAR;
- Minimum Keyboard Display (MKD); and
- Electronic Nautical Chart (ENC).

The Canadian Coast Guard broadcasts the virtual AIS AtoN only when a speed restriction is in effect in one or more testing zones.

Mariners must select the virtual AIS AtoN symbol to view a message such as "SectA1 Spd Lim 10 kt." This message refers to a speed restriction in effect for a specific zone.

Note: This system is not the primary method of communicating this information.

### **Compliance and enforcement**

Vessels must comply with the Interim Orders made pursuant to the *Canada Shipping Act, 2001*, and any NAVWARN broadcast and published by the Canadian Coast Guard relating to the Interim Orders, aimed at regulating the navigation for the purposes of protecting the North Atlantic right whales.

If a vessel does not comply with the Interim Orders or instructions in the NAVWARN related to the Interim Orders, the vessel could face:

- administrative monetary penalties up to a maximum of CAN \$250,000; and/or
- penal sanctions under the *Canada Shipping Act, 2001*.

If a vessel appears to have violated the speed restriction, Transport Canada Marine Safety inspectors will review all information provided through AIS and seek an explanation from the master.

No exemptions to the speed restriction will be granted in advance. However, if a deviation from the speed restrictions is necessary for safety reasons, the following information must be entered into the bridge logbook:

- Reason(s) for deviation
- Speed at which vessel is operated
- Latitude and longitude at time of deviation
- Time and duration of deviation
- Master of the vessel shall sign and date the bridge logbook entry

For any deviation, Transport Canada will review and consider reasons such as

- Navigating to ensure vessel safety;
- Weather conditions;
- Force majeure (unforeseeable circumstances); and
- Responding to emergencies.

### **Report a North Atlantic right whale sighting**

When there is a North Atlantic right whale that is entangled, injured or dead, please report it to the nearest Canadian Coast Guard Marine Communications and Traffic Services Centre, or as follows:

#### **Southern part of the Gulf of St. Lawrence**

Marine Animal Response Society

Telephone: 1-866-567-6277

#### **Newfoundland and Labrador**

Whale Release and Strandings

Telephone: 1-888-895-3003

#### **For the Québec Sector**

Marine Mammal Emergencies

Telephone: 1-877-722-5346

#### **If live, free-swimming whales are sighted**

- Call 1-902-440-8611 (local) or 1-844-800-8568 (toll free)
- Email: [XMARWhalesightings@df-mpo.gc.ca](mailto:XMARWhalesightings@df-mpo.gc.ca)

**Please consult WhaleMap for the latest right whale observations:** <https://whalemap.ocean.dal.ca/>

### **Saguenay–St. Lawrence Marine Park - Beluga Whale Protection: Slowdown Area at the Mouth of the Saguenay Fjord and Area Closure at Baie Sainte-Marguerite**

(Recurrent publication of notice \*406/21, originally published in the *Notices to Mariners – Monthly Eastern Edition 04/2021* publication.)

The Saguenay–St. Lawrence Marine Park and its surrounding area are at the heart of endangered beluga whale critical summer habitat. Marine mammal protection measures have been put in place in accordance with the *Marine Activities in the Saguenay–St. Lawrence Marine Park Regulations* within the limits of the Marine Park.

However, important feeding, calving and rearing areas for beluga whales require greater protection to ensure the recovery of the species. The portion of the Saguenay situated between the mouth of the Fjord and Baie Sainte-Marguerite is one of the areas most used by females and their young from May to October. The mouth of the Saguenay is known as a feeding ground and Baie Sainte-Marguerite as a calving and rearing area.

In order to prevent collisions with beluga whales, a compulsory 15-knot slowdown area is in effect from May 1<sup>st</sup> to October 31<sup>st</sup> at the mouth of the Saguenay. To ensure tranquility for female belugas and their young during the critical calving period, access to Baie Sainte-Marguerite is prohibited to all vessels from June 21<sup>st</sup> to September 21<sup>st</sup>, except for special authorizations (see description below).

For safety reasons, *the slowdown area measure at the mouth of the Saguenay Fjord does not apply* to cargo ships (see the monthly edition of *Notices to Mariners* from May to October for voluntary protection measures in the St. Lawrence Estuary). An enhanced vigilance is, however, recommended to all navigators between the mouth of the Saguenay Fjord and Baie Sainte-Marguerite for the protection of beluga whales.

For more information on the Saguenay–St. Lawrence Marine Park, see notice 5C of the *Notices to Mariners Annual Edition 2021* or visit [marinepark.qc.ca](http://marinepark.qc.ca).

## **REGULATORY PROTECTION MEASURES — BELUGA WHALE**

### **Entire Marine Park Territory:**

- When beluga whales are less than half a nautical mile (926 metres) from a motorized vessel, the vessel must maintain a speed of between 5 and 10 knots.
- All vessels, including human-powered vessels (kayaks and canoes), must continue to move forward and maintain their heading.
- All vessels must maintain a minimum distance of 400 metres from beluga whales at all times.

For more information concerning the regulations, consult: [marinepark.ca/protect/#regulations](http://marinepark.ca/protect/#regulations).

### **Mouth of the Saguenay Fjord (Figure 1) — Slowdown Area (area crosshatched in red):**

- Maximum speed at the mouth of the Saguenay between buoys S7 and S8 and the ferry docks between Baie-Sainte-Catherine and Tadoussac is 15 knots from May 1st to October 31st.

### **Baie Sainte-Marguerite (Figure 2) — Area Closure (red area):**

- From June 21st to September 21st, vessels must not enter the red area, which follows a line between Cap Nord-Ouest and Cap Sainte-Marguerite.
- Special authorizations are granted only for kayaks, canoes and recreational fishermen who must travel without stopping along a corridor within 10 metres of the shore or in shallow areas.

## **VOLUNTARY PROTECTION MEASURES**

### **Baie Sainte-Marguerite sector (Figure 2) — Transit Area (area crosshatched in yellow):**

- From June 21st to September 21st, navigation in this area is recommended at a speed of between 5 and 10 knots without stopping.

The purpose of this transit area is to favour respect of the *Marine Activities in the Saguenay–St. Lawrence Marine Park Regulations*, since beluga whales are often present in the Baie Sainte-Marguerite sector.

## **INFORMATION**

All incidents, including collisions with whales, must be reported without delay by dialling 1-866-508-9888. For any other situation concerning a marine mammal that is either dead or in trouble, contact the emergency network at 1-877-722-5346, or use VHF channel 16.



Figure 1

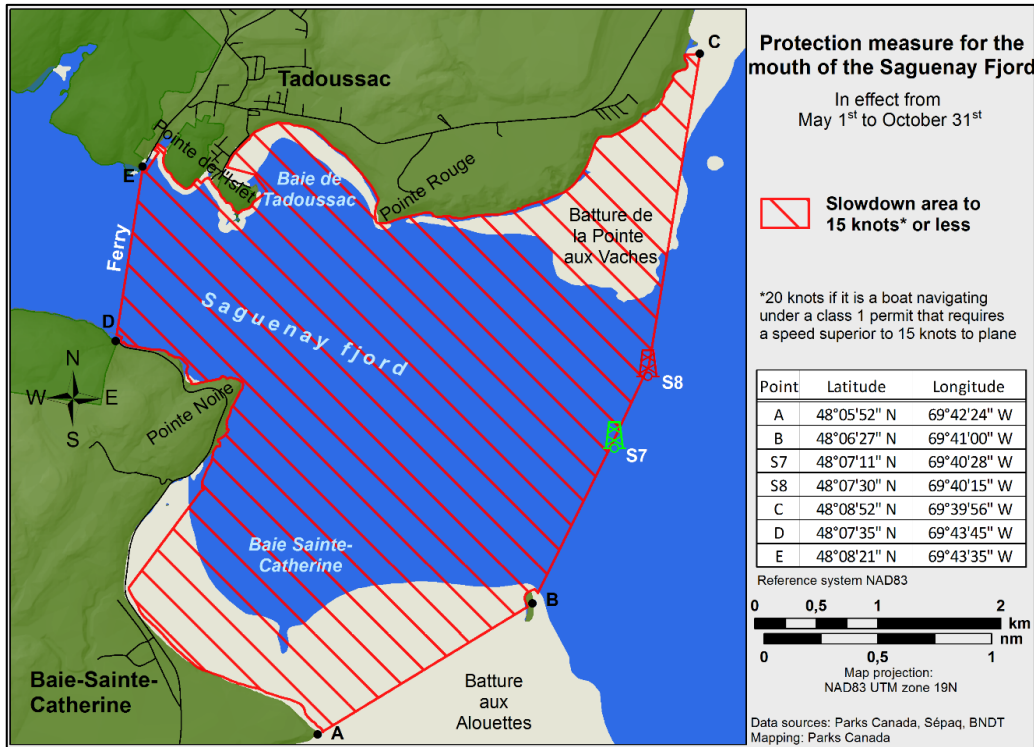
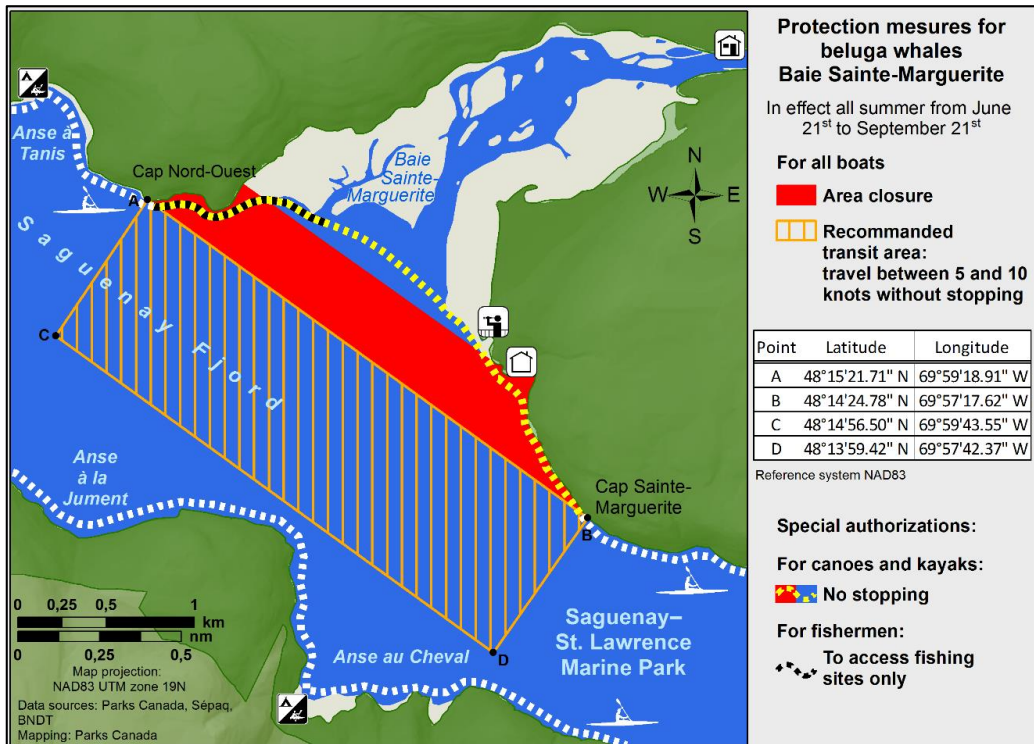


Figure 2



## **Saguenay-St. Lawrence Marine Park and Surrounding Waters – Whale Protection**

(Recurrent publication of notice \*407/21, originally published in the *Notices to Mariners – Monthly Eastern Edition 04/2021* publication.)

The waters in and around the Saguenay–St. Lawrence Marine Park are well known for the resident endangered beluga population and the wide diversity of whales that migrate there to feed, particularly between April and November.

### **REGULATORY PROTECTION MEASURES**

All whale species that are found in the St. Lawrence are protected under the *Marine Mammal Regulations*, pursuant to the *Fisheries Act*. Within the boundaries of the Marine Park, specific measures are set out in the *Marine Activities in the Saguenay–St. Lawrence Marine Park Regulations*, pursuant to the establishment of the *Saguenay–St. Lawrence Marine Park Act*. Any collision with a marine mammal within the Marine Park must immediately be reported to a park warden at 1-866-508-9888. For collisions that occur outside the Marine Park or for any situation involving a marine mammal that is dead or in trouble, contact the emergency network at 1-877-722-5346 or on VHF channel 16.

For more information on the Saguenay–St. Lawrence Marine Park, see notice 5C of the *Notices to Mariners Annual Edition 2021*.

### **VOLUNTARY PROTECTION MEASURES**

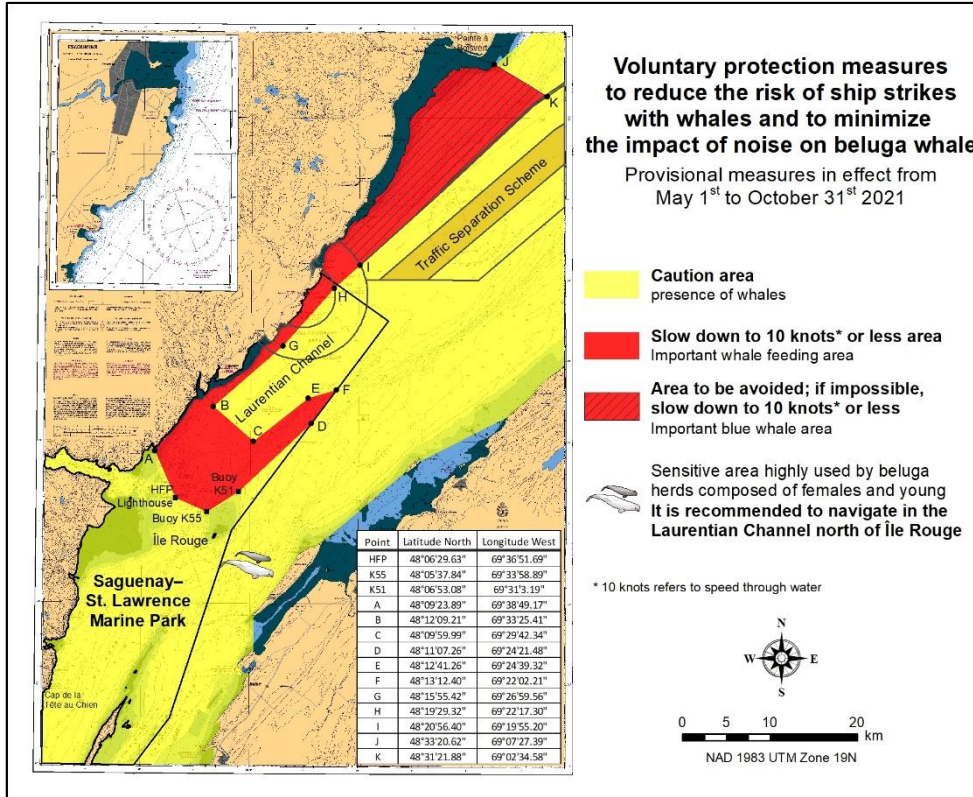
Provisional measures in effect from May 1 to October 31, 2021. See map at the end of this notice.

These measures apply to merchant vessels and cruise ships between Pointe à Boisvert and Cap de la Tête au Chien to prevent collisions with whales. These measures should only be taken when they will not jeopardize navigational safety.

**Caution area (yellow area):** To reduce the risk of collisions with whales that can be present anywhere in this area, heightened vigilance of navigators is critical. Posting a lookout is recommended in order to increase the chances of seeing the whales and thus taking necessary measures to avoid them. If bypassing the whales is not possible, slow down and wait for the animals to move away to a distance greater than 400 metres (0.215 nautical miles) before resuming original speed. It is more difficult to see the animals at night therefore increased caution is recommended.

**Slow down to 10 knots or less area (red area):** To reduce the risk of collisions with whales in this feeding area, it is recommended that vessels slow down to a maximum speed through the water of 10 knots and post a lookout. It is further recommended to remain in the Laurentian Channel to the north of Île Rouge to minimize the impact of noise in a sensitive area south of this island, which is highly frequented by herds of beluga whales composed of females and young.

**Area to be avoided (hatched red area):** To reduce noise and the risk of collisions with whales, vessels should avoid transiting through this area which is highly frequented by blue whales, an endangered species. If the area cannot be avoided, slow down to a speed through the water of 10 knots or less.



**\*1001/21 Canadian Hydrographic Service – Nautical Charts**

Charts	Main Title	Scale	Published	Cat#	Price
<b>New Charts</b>					
4940	Northumberland Strait Central Portion - Ports/Harbours	1:40 000	2021-10-15	1	\$20.00
<b>New Editions</b>					
4468	Île du Petit Mécatina aux/to Îles Sainte-Marie	1:750 000	2021-10-15	1	\$20.00
<b>Charts Permanently Withdrawn</b>					
4445	Merigomish Harbour	Cancelled by 4940			
4483	Caribou Harbour	Cancelled by 4940			

**\*1002/21 Canadian Hydrographic Service – Electronic Navigational Charts**

S-57 ENC Number	Chart Title	ENC Compilation Scale	Published
<b>New Charts</b>			
CA476610 (Edn 1.000)	Northumberland Strait Central Portion - Ports/Harbours	1:20 000	2021-10-22
CA476613 (Edn 1.000)	Northumberland Strait Central Portion - Ports/Harbours	1:20 000	2021-10-22
CA576449 (Edn 1.000)	Northumberland Strait Central Portion - Ports/Harbours	1:2 000	2021-10-22
CA576611 (Edn 1.000)	Northumberland Strait Central Portion - Ports/Harbours	1:7 500	2021-10-22
<b>New Editions</b>			
CA376102 (Edn 7.000)	Barren Island to/à Taylors Head	1:30 000	2021-10-22
CA470380 (Edn 5.000)	Carpenter Bay to/à Burnaby Island (Eastern Portion, Part 2 of 2)	1:18 750	2021-10-15
CA470624 (Edn 4.000)	Kitkatla Channel and/et Ogden Channel	1:20 000	2021-10-15
CA473474 (Edn 2.000)	Pike-Resor Channel	1:20 000	2021-10-01
CA570015 (Edn 9.000)	Fraser River/Fleuve Fraser, Sand Heads to/à Douglas Island	1:10 000	2021-10-15
CA573008 (Edn 7.000)	Toronto Harbour	1:7 500	2021-10-01
CA573387 (Edn 5.000)	Port de Valleyfield	1:2 500	2021-10-15
<b>Charts Permanently Withdrawn</b>			
CA576464	Caribou Harbour	Cancelled by CA476610	
CA576465	Caribou Ferry Terminal/Terminal du traversier	Cancelled by CA576611	
CA576466	Wood Islands Ferry Terminal/Terminal du traversier	Cancelled by CA576449	

**\*1003/21 Canadian Hydrographic Service – Raster Digital Charts (BSB V3)**

Charts	Main Title	Scale	Published
<b>New Charts</b>			
RM-4940	Northumberland Strait Central Portion - Ports/Harbours	1:40 000	2021-10-15
<b>Charts Permanently Withdrawn</b>			
RM-4445	Merigomish Harbour	Cancelled by RM-4940	
RM-4483	Caribou Harbour	Cancelled by RM-4940	

**\*1004/21 Canadian Coast Guard Publication – Amendments to Notices to Mariners Annual Edition 2021 - Section C, Notice 27A: Guidelines for the Transit of Wide-Beam Vessels and Long Vessels**

Several amendments have been made throughout notice 27A : Guidelines for the Transit of Wide-Beam Vessels and Long Vessels. The latest version of the notice can be found at the following link:  
<https://www.notmar.gc.ca/publications/annual-annuel/section-c/c27a-en.pdf>.

**\*1005/21 Canadian Coast Guard Publication – Amendments to the *List of Lights, Buoys and Fog Signals* Publication: Pacific Coast**

Please note that the "Fraser River" section in the Pacific Coast volume of the *List of Lights, Buoys and Fog Signals* publication is now separated into two distinct sections. Please see the table below for the complete list of changes.

Previous Section	New Sections
Fraser River LL 310 – 371, 380.5 – 385	Fraser River – South Arm LL 310 – 371
	Fraser River – Middle Arm and North Arm LL 380.5 – 385

**\*1006/21 Long Point Bay – Unlit Buoy Repositioned**

Reference Chart: 2110

The following unlit buoy has been repositioned:

Aid Name	LL #	Position
Spar Buoy 90-C-1	7167.01	42° 34' 55.6"N 080° 06' 53.8"W

(B2021-017)

**\*1007/21 Strait of Canso – Unlit Buoy Repositioned**

Reference Chart: 4302

The following unlit buoy has been repositioned:

Aid Name	LL #	Position
Auld's Cove buoy VT1	5890.1	45° 38' 56.2"N 061° 26' 00.8"W

(G2021-073)

## Section 1A: Temporary and Preliminary Notices

### Reminder – Comment Period for Active Preliminary Notices

This is a reminder that the comment period is still open for the following active Preliminary notices:

Notice #	Reference Chart #	Aids Affected (LL #)	Intent of Notice
<b>Newfoundland and Labrador Coast</b>			
<a href="#">906(P)/21</a>	4850	473	Fog Signal to be Discontinued
<b>Atlantic Coast</b>			
<a href="#">806(P)/21</a>	4118	5220.5, 5251.6	Notice of Proposed Changes
<a href="#">807(P)/21</a>	4236	5565.02, 5565.03, 5565.04, 5565.05	Notice of Proposed Changes
<a href="#">808(P)/21</a>	4379	408.5	Notice of Proposed Changes
<a href="#">809(P)/21</a>	4394	LIST	Notice of Proposed Changes
<b>Inland Waters</b>			
<a href="#">908(P)/21</a>	N/A	1408	Aid to Navigation to be Discontinued

Please refer to the [Notices to Mariners - Monthly Summary of Temporary and Preliminary Notices](#) publication for details.

### Newfoundland and Labrador Coast

No notices applicable for this edition.

### Atlantic Coast

No notices applicable for this edition.

### Inland Waters

No notices applicable for this edition.

## Section 2: Chart Corrections

**1314 - Donnacona à/to Batiscan - New Edition - 15-MAR-2019 - NAD 1983**  
01-OCT-2021

		LNM/D. 12-MAR-2021
Delete	depth of 7 metres 2 decimetres (See Chart No. 1, I10) This notice affects Electronic Navigational Chart: CA479017	46°34'58.6"N 072°00'49.6"W  <i>DFO(6410601-01)</i>
Add	depth of 6 metres 9 decimetres (See Chart No. 1, I10) This notice affects Electronic Navigational Chart: CA479017	46°34'58.5"N 072°00'49.8"W  <i>DFO(6410601-02)</i>
Delete	depth of 11 metres 5 decimetres (See Chart No. 1, I10) This notice affects Electronic Navigational Chart: CA479017	46°35'40.8"N 072°00'06.7"W  <i>DFO(6410601-03)</i>
Add	depth of 11 metres 0 decimetres (See Chart No. 1, I10) This notice affects Electronic Navigational Chart: CA479017	46°35'41.3"N 072°00'07.4"W  <i>DFO(6410601-04)</i>
Add	depth of 9 metres 6 decimetres (See Chart No. 1, I10) This notice affects Electronic Navigational Chart: CA479017	46°35'00.6"N 072°00'46.6"W  <i>DFO(6410601-05)</i>
Delete	depth of 8 metres 7 decimetres (See Chart No. 1, I10) This notice affects Electronic Navigational Chart: CA479017	46°32'41.9"N 072°09'47.2"W  <i>DFO(6410601-06)</i>
Add	depth of 8 metres 2 decimetres (See Chart No. 1, I10) This notice affects Electronic Navigational Chart: CA479017	46°32'42.3"N 072°09'46.8"W  <i>DFO(6410601-07)</i>

**1315 - Québec à/to Donnacona - New Edition - 24-MAY-2019 - NAD 1983**  
15-OCT-2021

		LNM/D. 22-MAY-2020
Delete	depth of 12 metres 0 decimetres (See Chart No. 1, I10) This notice affects Electronic Navigational Chart: CA479020	46°40'52.9"N 071°33'37.9"W  <i>DFO(6410588-01)</i>
Add	depth of 11 metres 1 decimetre (See Chart No. 1, I10) This notice affects Electronic Navigational Chart: CA479020	46°40'53.1"N 071°33'38.2"W  <i>DFO(6410588-02)</i>

**1351 - Pointe Naylor au Lac/to Lake Champlain - Sheet/Feuille 4 - New Edition - 18-NOV-2016 - NAD 1983**

		LNM/D. 13-NOV-2020
Add	green port hand spar buoy, marked E527 (See Chart No. 1, Qg) This notice affects Electronic Navigational Chart: CA579127	45°04'52.0"N 073°19'12.8"W  <i>(Q2021018) DFO(6410590-01)</i>

Add	foul area dangerous to surface navigation, Rep (2020) (See Chart No. 1, Kc, I3.2) This notice affects Electronic Navigational Chart: CA579127	45°00'58.7"N 073°20'54.7"W	
			<i>DFO(6410599-01)</i>
<b>2110 - Long Point Bay - New Edition - 23-FEB-2018 - World Geodetic System 1984</b>			
	08-OCT-2021		LNMD. 13-AUG-2021
Delete	yellow cautionary spar buoy, marked Priv (See Chart No. 1, Qm) This notice affects Electronic Navigational Chart: CA373093, CA473305	42°39'12.0"N 080°09'12.0"W	
			<i>(B2021016) DFO(6604798-01)</i>
Delete	yellow cautionary spar buoy, marked Priv (See Chart No. 1, Qm) This notice affects Electronic Navigational Chart: CA373093, CA473305	42°36'51.0"N 080°07'42.0"W	
			<i>(B2021018) DFO(6604800-01)</i>
<b>2120 - Niagara River to/à Long Point - New Edition - 15-APR-2005 - NAD 1983</b>			
	08-OCT-2021		LNMD. 13-AUG-2021
Delete	yellow cautionary spar buoy, marked Priv (See Chart No. 1, Qm) This notice affects Electronic Navigational Chart: CA373093, CA473305	42°39'12.0"N 080°09'12.0"W	
			<i>(B2021016) DFO(6604798-01)</i>
Delete	yellow cautionary spar buoy, marked Priv (See Chart No. 1, Qm) This notice affects Electronic Navigational Chart: CA373093, CA473305	42°36'51.0"N 080°07'42.0"W	
			<i>(B2021018) DFO(6604800-01)</i>
<b>4000 - Gulf of Maine to/à Baffin Bay / Baie de Baffin - New Edition - 25-JUL-2003 - NAD 1983</b>			
	22-OCT-2021		LNMD. 03-SEP-2021
Delete	lighted offshore platform, marked Alma (See Chart No. 1, P2) This notice affects Electronic Navigational Chart: CA176140	43°37'00.0"N 060°40'35.0"W	
			<i>DFO(6309440-01)</i>
Delete	lighted offshore platform, marked Thebaud (See Chart No. 1, P2) This notice affects Electronic Navigational Chart: CA176140, CA276204, CA376289	43°54'00.0"N 060°10'00.0"W	
			<i>DFO(6309440-03)</i>
Delete	lighted offshore platform, marked North Triumph (See Chart No. 1, P2) This notice affects Electronic Navigational Chart: CA176140, CA276090, CA376289	43°43'00.0"N 059°49'20.0"W	
			<i>DFO(6309440-08)</i>
Delete	lighted offshore platform, marked Venture/South Venture (See Chart No. 1, P2) This notice affects Electronic Navigational Chart: CA176140, CA276204, CA376289	44°03'00.0"N 059°33'00.0"W	
			<i>DFO(6309440-18)</i>
<b>4001 - Gulf of Maine to Strait of Belle Isle / au Detroit de Belle Isle - New Edition - 01-DEC-1995 - NAD 1983</b>			
	22-OCT-2021		LNMD. 03-SEP-2021
Delete	lighted offshore platform, marked Alma (See Chart No. 1, P2) This notice affects Electronic Navigational Chart: CA176140	43°34'45.0"N 060°38'05.0"W	
			<i>DFO(6309440-01)</i>



Delete	lighted offshore platform, marked Thebaud (See Chart No. 1, P2) This notice affects Electronic Navigational Chart: CA176140, CA276204, CA376289	43°53'31.0"N 060°11'54.0"W  <i>DFO(6309440-03)</i>
Delete	lighted offshore platform, marked North Triumph (See Chart No. 1, P2) This notice affects Electronic Navigational Chart: CA176140, CA276090, CA376289	43°41'56.0"N 059°51'16.0"W  <i>DFO(6309440-08)</i>
Delete	lighted offshore platform, marked South Venture (See Chart No. 1, P2) This notice affects Electronic Navigational Chart: CA176140, CA276204, CA376289	43°59'51.0"N 059°37'37.0"W  <i>DFO(6309440-14)</i>
Delete	lighted offshore platform, marked Venture (See Chart No. 1, P2) This notice affects Electronic Navigational Chart: CA176140, CA276204, CA376289	44°02'00.0"N 059°34'57.0"W  <i>DFO(6309440-18)</i>
<b>4003 - Cape Breton to / à Cape Cod - New Edition - 21-MAR-2003 - NAD 1983</b>		
22-OCT-2021		LNMD. 03-SEP-2021
Delete	lighted offshore platform Mo(U) 15M, marked Alma (See Chart No. 1, P2) This notice affects Electronic Navigational Chart: CA176140	43°36'00.0"N 060°41'08.0"W  <i>DFO(6309440-01)</i>
Delete	legend Fog Sig (U) (See Chart No. 1, R1)	43°36'00.0"N 060°41'08.0"W  <i>DFO(6309440-02)</i>
Delete	lighted offshore platform Mo(U) 15M, marked Thebaud (See Chart No. 1, P2) This notice affects Electronic Navigational Chart: CA176140, CA276204, CA376289	43°53'31.0"N 060°11'51.0"W  <i>DFO(6309440-03)</i>
Delete	legend Fog Sig (U) (See Chart No. 1, R1) This notice affects Electronic Navigational Chart: CA276204, CA376289	43°53'31.0"N 060°11'51.0"W  <i>DFO(6309440-04)</i>
Delete	lighted offshore platform Mo(U), marked North Triumph (See Chart No. 1, P2) This notice affects Electronic Navigational Chart: CA176140, CA276090, CA376289	43°42'05.0"N 059°51'13.0"W  <i>DFO(6309440-08)</i>
Delete	legend Fog Sig (U) (See Chart No. 1, R1) This notice affects Electronic Navigational Chart: CA176140, CA276090, CA376289	43°42'05.0"N 059°51'13.0"W  <i>DFO(6309440-09)</i>
Delete	lighted offshore platform Mo(U) 15M, marked South Venture (See Chart No. 1, P2) This notice affects Electronic Navigational Chart: CA176140, CA276204, CA376289	44°00'00.0"N 059°37'20.0"W  <i>DFO(6309440-14)</i>
Delete	legend Fog Sig (U) (See Chart No. 1, R1) This notice affects Electronic Navigational Chart: CA176140, CA276204, CA376289	44°00'00.0"N 059°37'20.0"W  <i>DFO(6309440-16)</i>

Delete	lighted offshore platform Mo(U), marked Venture (See Chart No. 1, P2) This notice affects Electronic Navigational Chart: CA176140, CA276204, CA376289	44°02'08.0"N 059°34'48.0"W  <i>DFO(6309440-18)</i>
Delete	legend Fog Sig (U) (See Chart No. 1, R1) This notice affects Electronic Navigational Chart: CA176140, CA276204, CA376289	44°02'08.0"N 059°34'48.0"W  <i>DFO(6309440-19)</i>
Delete	note 'PRODUCTION PLATFORMS Production Platforms and associated structures exhibit white lights Mo(U)15M, red air obstruction lights and sound fog signals Mo(U)30s. SAFETY ZONES have been established for the protection of the production facilities, other vessels and the marine environment. Unauthorized navigation within the Safety Zone is prohibited. Mariners are advised that any vessel proposing to transit the Safety Zone must contact the operator on VHF Channel 16 and, if approved, comply with the instructions given while transiting the area. Vessel movement in the area is monitored on a 24-hour basis. For additional information, consult Notices to Mariners No. 20, Annual Edition.  PLATE-FORMES DE PRODUCTION Les plates-formes de production et leurs structures annexes sont signalées par des feux blancs Mo(U)15M, des feux rouges d'obstacle aérien et par un signal de brume sonore Mo(U)30s. Des ZONES DE SÉCURITÉ ont été établies pour protéger les installations de production, les autres bâtiments et l'environnement marin. Toute navigation non autorisée est interdite à l'intérieur des limites de la zone de sécurité. Les navigateurs qui désirent traverser la zone de sécurité doivent contacter les responsables de la plate-forme sur la voie VHF 16 et, le cas échéant, se conformer aux instructions reçues pour traverser la zone de sécurité. Le trafic maritime est surveillé jour et nuit. Pour plus d'informations, reportez-vous aux Avis aux navigateurs n° 20, Édition annuelle.'  (See Chart No. 1, A14) This notice affects Electronic Navigational Chart: CA176140, CA276090, CA376289	east border of chart at 40° 34' 00" N  <i>DFO(6309440-21)</i>
<b>4006 - Newfoundland and Labrador/Terre-Neuve-et-Labrador to Bermuda / aux Bermudes - New Edition - 08-AUG-2003 - NAD 1983</b>		
22-OCT-2021		LNMD. 03-SEP-2021
Delete	lighted offshore platform, marked Alma (See Chart No. 1, P2) This notice affects Electronic Navigational Chart: CA176140	43°38'20.0"N 060°41'32.0"W  <i>DFO(6309440-01)</i>
Delete	lighted offshore platform, marked Thebaud (See Chart No. 1, P2) This notice affects Electronic Navigational Chart: CA176140, CA276204, CA376289	43°53'20.0"N 060°12'38.0"W  <i>DFO(6309440-03)</i>
Delete	lighted offshore platform, marked North Triumph (See Chart No. 1, P2) This notice affects Electronic Navigational Chart: CA176140, CA276090, CA376289	43°41'45.0"N 059°51'50.0"W  <i>DFO(6309440-08)</i>
Delete	lighted offshore platform, marked Venture/South Venture (See Chart No. 1, P2) This notice affects Electronic Navigational Chart: CA176140, CA276204, CA376289	44°01'50.0"N 059°35'20.0"W  <i>DFO(6309440-18)</i>

**4013 - Halifax to / à Sydney - New Edition - 06-SEP-2002 - NAD 1983**

22-OCT-2021

LNMD. 02-APR-2021

Delete	lighted offshore platform Mo(U) 15M, marked Thebaud (See Chart No. 1, P2) This notice affects Electronic Navigational Chart: CA176140, CA276204, CA376289	43°53'29.0"N 060°12'03.0"W	<i>DFO(6309440-03)</i>
Delete	legend Fog Sig (U) 30s (See Chart No. 1, R1) This notice affects Electronic Navigational Chart: CA276204, CA376289	43°53'29.0"N 060°12'03.0"W	<i>DFO(6309440-04)</i>
Delete	note 'PRODUCTION PLATFORMS Production Platforms and associated structures exhibit white lights Mo(U)15M, red air obstruction lights and sound fog signals Mo(U)30s. SAFETY ZONES have been established for the protection of the production facilities, other vessels and the marine environment. Unauthorized navigation within the Safety Zone is prohibited. Mariners are advised that any vessel proposing to transit the Safety Zone must contact the operator on VHF Channel 16 and, if approved, comply with the instructions given while transiting the area. Vessel movement in the area is monitored on a 24-hour basis. For additional information, consult Notices to Mariners No. 20, Annual Edition.  PLATE-FORMES DE PRODUCTION Les plates-formes de production et leurs structures annexes sont signalées par des feux blancs Mo(U)15M, des feux rouges d'obstacle aérien et par un signal de brume sonore Mo(U)30s. Des ZONES DE SÉCURITÉ ont été établies pour protéger les installations de production, les autres bâtiments et l'environnement marin. Toute navigation non autorisée est interdite à l'intérieur des limites de la zone de sécurité. Les navigateurs qui désirent traverser la zone de sécurité doivent contacter les responsables de la plate-forme sur la voie VHF 16 et, le cas échéant, se conformer aux instructions reçues pour traverser la zone de sécurité. Le trafic maritime est surveillé jour et nuit. Pour plus d'informations, reportez-vous aux Avis aux navigateurs n° 20, Édition annuelle.'  (See Chart No. 1, A14) This notice affects Electronic Navigational Chart: CA276204	45°20'00.0"N 061°50'00.0"W	<i>DFO(6309440-07)</i>
Delete	lighted offshore platform Mo(U) 15M, marked South Venture (See Chart No. 1, P2) This notice affects Electronic Navigational Chart: CA176140, CA276204, CA376289	43°59'51.0"N 059°37'36.0"W	<i>DFO(6309440-14)</i>
Delete	legend Fog Sig Mo(U) (See Chart No. 1, R1) This notice affects Electronic Navigational Chart: CA176140, CA276204, CA376289	43°59'51.0"N 059°37'36.0"W	<i>DFO(6309440-16)</i>
Delete	lighted offshore platform Mo(U) 7M, marked Venture (See Chart No. 1, P2) This notice affects Electronic Navigational Chart: CA176140, CA276204, CA376289	44°02'02.0"N 059°34'58.0"W	<i>DFO(6309440-18)</i>
Delete	legend Fog Sig (U) 30s (See Chart No. 1, R1) This notice affects Electronic Navigational Chart: CA176140, CA276204, CA376289	44°02'02.0"N 059°34'58.0"W	<i>DFO(6309440-19)</i>

**4016 - Saint-Pierre to / à St. John's - New Edition - 06-JUN-2003 - NAD 1983**

08-OCT-2021 LNMD. 24-SEP-2021  
Amend FI6s237ft5M to read FI 4s237ft7M against light 47°17'54.9"N 054°42'11.4"W  
(See Chart No. 1, P16)  
This notice affects Electronic Navigational Chart: CA276274, CA376173  
(N2021104) LL(52) DFO(6309657-01)

**4021 - Pointe Amour à / to Cape Whittle et / and Cape George - New Edition - 01-NOV-2002 - NAD 1983**

15-OCT-2021 LNM/D. 09-JUL-2021  
Amend FI6s221ft5M to read FI 4s221ft5M against light 49°06'29.0"N 058°25'39.0"W  
(See Chart No. 1, P16)  
This notice affects Electronic Navigational Chart: CA276138, CA476190, CA576191  
(N2021118) LL(196) DFO(6309595-01)

29-OCT-2021 LNM/D. 15-OCT-2021  
Amend FI G 6s48ft to read FI G 6s58ft against light 50°28'13.5"N 059°27'29.2"W  
(See Chart No. 1, P16)  
This notice affects Electronic Navigational Chart: CA276138  
LL(1558.7) DFO(6309561-01)

**4022 - Cabot Strait and approaches / Détroit de Cabot et les approches - New Edition - 17-JAN-2003 - NAD 1983**

15-OCT-2021 LNM/D. 30-APR-2021  
Amend FI 6s 221ft 5M to read FI 4s221ft5M against light 49°06'28.0"N 058°25'39.0"W  
(See Chart No. 1, P16)  
This notice affects Electronic Navigational Chart: CA276138, CA476190, CA576191  
(N2021118) LL(196) DFO(6309595-01)

**4045 - Sable Island Bank / Banc de l'Île de Sable to / au St. Pierre Bank / Banc de Saint-Pierre - New Edition - 10-OCT-2003 - NAD 1983**

22-OCT-2021 LNM/D. 23-APR-2021  
Delete lighted offshore platform Mo(U) 10M, marked North Triumph 43°41'58.0"N 059°51'13.0"W  
(See Chart No. 1, P2)  
This notice affects Electronic Navigational Chart: CA176140, CA276090, CA376289  
DFO(6309440-08)

Delete legend FogSig(U)30s 43°41'58.0"N 059°51'13.0"W  
(See Chart No. 1, R1)  
This notice affects Electronic Navigational Chart: CA176140, CA276090, CA376289  
DFO(6309440-09)

Delete note 'See/Voir note PRODUCTION PLATFORMS PLATES-FORMES 43°39'50.0"N 059°52'03.0"W  
DE PRODUCTION'  
(See Chart No. 1, A14)  
This notice affects Electronic Navigational Chart: CA276090, CA376289  
DFO(6309440-11)

Delete lighted offshore platform Mo(U) 15M, marked South Venture 43°59'51.0"N 059°37'37.0"W  
(See Chart No. 1, P2)  
This notice affects Electronic Navigational Chart: CA176140, CA276204, CA376289  
DFO(6309440-14)

Delete legend Fog Sig Mo(U) 43°59'51.0"N 059°37'37.0"W  
(See Chart No. 1, R1)  
This notice affects Electronic Navigational Chart: CA176140, CA276204, CA376289  
DFO(6309440-16)

Delete	note 'See/Voir note PRODUCTION PLATFORMS PLATES-FORMES DE PRODUCTION' (See Chart No. 1, A14) This notice affects Electronic Navigational Chart: CA376289	43°58'53.0"N 059°28'01.0"W	<i>DFO(6309440-17)</i>
Delete	lighted offshore platform Mo(U) 7M, marked Venture (See Chart No. 1, P2) This notice affects Electronic Navigational Chart: CA176140, CA276204, CA376289	44°02'02.0"N 059°34'55.0"W	<i>DFO(6309440-18)</i>
Delete	legend FogSig(U)30s (See Chart No. 1, R1) This notice affects Electronic Navigational Chart: CA176140, CA276204, CA376289	44°02'02.0"N 059°34'55.0"W	<i>DFO(6309440-19)</i>
Delete	note 'PRODUCTION PLATFORMS Production Platforms and associated structures exhibit white lights Mo(U)15M, red air obstruction lights and sound fog signals Mo(U)30s. SAFETY ZONES have been established for the protection of the production facilities, other vessels and the marine environment. Unauthorized navigation within the Safety Zone is prohibited. Mariners are advised that any vessel proposing to transit the Safety Zone must contact the operator on VHF Channel 16 and, if approved, comply with the instructions given while transiting the area. Vessel movement in the area is monitored on a 24-hour basis. For additional information, consult Notices to Mariners No. 20, Annual Edition.  PLATE-FORMES DE PRODUCTION Les plates-formes de production et leurs structures annexes sont signalées par des feux blancs Mo(U)15M, des feux rouges d'obstacle aérien et par un signal de brume sonore Mo(U)30s. Des ZONES DE SÉCURITÉ ont été établies pour protéger les installations de production, les autres bâtiments et l'environnement marin. Toute navigation non autorisée est interdite à l'intérieur des limites de la zone de sécurité. Les navigateurs qui désirent traverser la zone de sécurité doivent contacter les responsables de la plate-forme sur la voie VHF 16 et, le cas échéant, se conformer aux instructions reçues pour traverser la zone de sécurité. Le trafic maritime est surveillé jour et nuit. Pour plus d'informations, reportez-vous aux Avis aux navigateurs n° 20, Édition annuelle.'  (See Chart No. 1, A14) This notice affects Electronic Navigational Chart: CA176140, CA276090, CA376289	46°43'34.0"N 057°10'11.0"W	<i>DFO(6309440-21)</i>
<b>4098 - Sable Island / Île de Sable - New Edition - 30-NOV-2001 - NAD 1983</b>			
22-OCT-2021		LNM/D. 10-AUG-2018	
Delete	lighted offshore platform Mo(U) 15M, marked Thebaud (See Chart No. 1, P2) This notice affects Electronic Navigational Chart: CA176140, CA276204, CA376289	43°53'28.5"N 060°12'00.0"W	<i>DFO(6309440-03)</i>
Delete	legend Fog Sig (U) 30s (See Chart No. 1, R1) This notice affects Electronic Navigational Chart: CA276204, CA376289	43°53'28.5"N 060°12'00.0"W	<i>DFO(6309440-04)</i>
Delete	safety zone (See Chart No. 1, L3) This notice affects Electronic Navigational Chart: CA376289	43°53'28.5"N 060°12'00.0"W	<i>DFO(6309440-05)</i>

Delete	note 'See/Voir note PRODUCTION PLATFORMS PLATES-FORMES DE PRODUCTION' (See Chart No. 1, A14) This notice affects Electronic Navigational Chart: CA376289	43°52'59.4"N 060°13'03.0"W  <i>DFO(6309440-06)</i>
Delete	lighted offshore platform Mo(U) 10M, marked North Triumph (See Chart No. 1, P2) This notice affects Electronic Navigational Chart: CA176140, CA276090, CA376289	43°41'56.5"N 059°51'16.0"W  <i>DFO(6309440-08)</i>
Delete	legend Fog Sig (U) 30s (See Chart No. 1, R1) This notice affects Electronic Navigational Chart: CA176140, CA276090, CA376289	43°41'56.5"N 059°51'16.0"W  <i>DFO(6309440-09)</i>
Delete	safety zone (See Chart No. 1, L3) This notice affects Electronic Navigational Chart: CA376289	43°41'56.5"N 059°51'16.0"W  <i>DFO(6309440-10)</i>
Delete	note 'See/Voir note PRODUCTION PLATFORMS PLATES-FORMES DE PRODUCTION' (See Chart No. 1, A14) This notice affects Electronic Navigational Chart: CA276090, CA376289	43°41'25.0"N 059°52'27.0"W  <i>DFO(6309440-11)</i>
Delete	note 'See/Voir note PRODUCTION PLATFORMS PLATES-FORMES DE PRODUCTION' (See Chart No. 1, A14) This notice affects Electronic Navigational Chart: CA376289	44°01'10.0"N 059°33'45.0"W  <i>DFO(6309440-12)</i>
Delete	lighted offshore platform Mo(U) 15M, marked South Venture (See Chart No. 1, P2) This notice affects Electronic Navigational Chart: CA176140, CA276204, CA376289	43°59'51.0"N 059°37'37.0"W  <i>DFO(6309440-14)</i>
Delete	safety zone (See Chart No. 1, L3) This notice affects Electronic Navigational Chart: CA376289	43°59'51.0"N 059°37'37.0"W  <i>DFO(6309440-15)</i>
Delete	legend Fog Sig (U) 30s (See Chart No. 1, R1) This notice affects Electronic Navigational Chart: CA176140, CA276204, CA376289	43°59'51.0"N 059°37'37.0"W  <i>DFO(6309440-16)</i>
Delete	note 'See/Voir note PRODUCTION PLATFORMS PLATES-FORMES DE PRODUCTION' (See Chart No. 1, A14) This notice affects Electronic Navigational Chart: CA376289	43°59'00.0"N 059°36'24.0"W  <i>DFO(6309440-17)</i>
Delete	lighted offshore platform Mo(U) 7M, marked Venture (See Chart No. 1, P2) This notice affects Electronic Navigational Chart: CA176140, CA276204, CA376289	44°02'00.0"N 059°34'57.0"W  <i>DFO(6309440-18)</i>

Delete	legend Fog Sig (U) 30s (See Chart No. 1, R1) This notice affects Electronic Navigational Chart: CA176140, CA276204, CA376289	44°02'00.0"N 059°34'57.0"W  <i>DFO(6309440-19)</i>
Delete	safety zone (See Chart No. 1, L3) This notice affects Electronic Navigational Chart: CA376289	44°02'00.0"N 059°34'57.0"W  <i>DFO(6309440-20)</i>
Delete	note 'PRODUCTION PLATFORMS Production Platforms and associated structures exhibit white lights Mo(U)15M, red air obstruction lights and sound fog signals Mo(U)30s. SAFETY ZONES have been established for the protection of the production facilities, other vessels and the marine environment. Unauthorized navigation within the Safety Zone is prohibited. Mariners are advised that any vessel proposing to transit the Safety Zone must contact the operator on VHF Channel 16 and, if approved, comply with the instructions given while transiting the area. Vessel movement in the area is monitored on a 24-hour basis. For additional information, consult Notices to Mariners No. 20, Annual Edition.	43°33'34.0"N 059°46'48.0"W
	PLATE-FORMES DE PRODUCTION Les plates-formes de production et leurs structures annexes sont signalées par des feux blancs Mo(U)15M, des feux rouges d'obstacle aérien et par un signal de brume sonore Mo(U)30s. Des ZONES DE SÉCURITÉ ont été établies pour protéger les installations de production, les autres bâtiments et l'environnement marin. Toute navigation non autorisée est interdite à l'intérieur des limites de la zone de sécurité. Les navigateurs qui désirent traverser la zone de sécurité doivent contacter les responsables de la plate-forme sur la voie VHF 16 et, le cas échéant, se conformer aux instructions reçues pour traverser la zone de sécurité. Le trafic maritime est surveillé jour et nuit. Pour plus d'informations, reportez-vous aux Avis aux navigateurs n° 20, Édition annuelle.'	
	(See Chart No. 1, A14) This notice affects Electronic Navigational Chart: CA176140, CA276090, CA376289	<i>DFO(6309440-21)</i>
<b>4099 - Sable Island / Île de Sable: Western Portion / Partie Ouest - New Edition - 28-DEC-2001 - NAD 1983</b>		
	22-OCT-2021	LNM/D. 03-SEP-2021
Delete	lighted offshore platform Mo(U) 15M, marked Thebaud (See Chart No. 1, P2) This notice affects Electronic Navigational Chart: CA176140, CA276204, CA376289	43°53'28.5"N 060°12'00.0"W  <i>DFO(6309440-03)</i>
Delete	legend Fog Sig (U) 30s (See Chart No. 1, R1) This notice affects Electronic Navigational Chart: CA276204, CA376289	43°53'28.5"N 060°12'00.0"W  <i>DFO(6309440-04)</i>
Delete	safety zone (See Chart No. 1, L3) This notice affects Electronic Navigational Chart: CA376289	43°53'28.5"N 060°12'00.0"W  <i>DFO(6309440-05)</i>
Delete	note 'See/Voir note PRODUCTION PLATFORMS PLATES-FORMES DE PRODUCTION' (See Chart No. 1, A14) This notice affects Electronic Navigational Chart: CA376289	43°53'05.0"N 060°15'11.0"W  <i>DFO(6309440-06)</i>

Delete	<p>note 'PRODUCTION PLATFORMS Production Platforms and associated structures exhibit white lights Mo(U)15M, red air obstruction lights and sound fog signals Mo(U)30s. SAFETY ZONES have been established for the protection of the production facilities, other vessels and the marine environment. Unauthorized navigation within the Safety Zone is prohibited. Mariners are advised that any vessel proposing to transit the Safety Zone must contact the operator on VHF Channel 16 and, if approved, comply with the instructions given while transiting the area. Vessel movement in the area is monitored on a 24-hour basis. For additional information, consult Notices to Mariners No. 20, Annual Edition.</p> <p>PLATE-FORMES DE PRODUCTION Les plates-formes de production et leurs structures annexes sont signalées par des feux blancs Mo(U)15M, des feux rouges d'obstacle aérien et par un signal de brume sonore Mo(U)30s. Des ZONES DE SÉCURITÉ ont été établies pour protéger les installations de production, les autres bâtiments et l'environnement marin. Toute navigation non autorisée est interdite à l'intérieur des limites de la zone de sécurité. Les navigateurs qui désirent traverser la zone de sécurité doivent contacter les responsables de la plate-forme sur la voie VHF 16 et, le cas échéant, se conformer aux instructions reçues pour traverser la zone de sécurité. Le trafic maritime est surveillé jour et nuit. Pour plus d'informations, reportez-vous aux Avis aux navigateurs n° 20, Édition annuelle.'</p> <p>(See Chart No. 1, A14) This notice affects Electronic Navigational Chart: CA176140, CA276090, CA376289</p>	43°35'35.0"N 060°18'21.0"W
		<i>DFO(6309440-21)</i>
<b>4116 - Approaches to / Approches à Saint John - New Edition - 31-AUG-2007 - NAD 1983</b>		
22-OCT-2021		
Delete	<p>depth of 3 metres (See Chart No. 1, I10) This notice affects Electronic Navigational Chart: CA376011</p>	45°20'12.9"N 066°02'56.6"W
		<i>DFO(6309776-02)</i>
Add	<p>underwater rock of unknown depth, dangerous to surface navigation with legend Rep (2020) (See Chart No. 1, K13, I3) This notice affects Electronic Navigational Chart: CA376011</p>	45°20'12.9"N 066°02'56.0"W
		<i>DFO(6309776-03)</i>
<b>4141 - Saint John to / à Grand Bay including / y compris Kennebecasis River - Sheet / Feuille A-B - New Edition - 30-OCT-2009 - NAD 1983</b>		
22-OCT-2021		
Add	<p>obstruction, depth unknown with legend Rep (2021) (See Chart No. 1, K40, I3)</p>	45°16'38.1"N 066°07'53.9"W
		<i>DFO(6309776-01)</i>
Delete	<p>depth of 3 metres (See Chart No. 1, I10) This notice affects Electronic Navigational Chart: CA376011</p>	45°20'12.9"N 066°02'56.6"W
		<i>DFO(6309776-02)</i>
Add	<p>underwater rock of unknown depth, dangerous to surface navigation with legend Rep (2020) (See Chart No. 1, K13, I3) This notice affects Electronic Navigational Chart: CA376011</p>	45°20'12.9"N 066°02'56.0"W
		<i>DFO(6309776-03)</i>



Add wreck, least depth unknown PA with legend Rep (2021) 45°22'06.0"N 066°04'12.0"W  
(See Chart No. 1, K29, B7, I3)  
DFO(6309776-04)

**4201 - Halifax Harbour: Bedford Basin - New Edition - 25-AUG-2017 - NAD 1983**  
15-OCT-2021

LNMD. 10-JAN-2020

Add yellow cautionary lighted spar buoy FI Y, marked HYC 44°41'43.8"N 063°37'06.6"W  
(See Chart No. 1, Qm)  
This notice affects Electronic Navigational Chart: CA576001  
(F2021042) LL(560.6) DFO(6309635-01)

**4202 - Halifax Harbour: Point Pleasant to / à Bedford Basin - New Edition - 26-FEB-2016 - NAD 1983**  
01-OCT-2021

LNMD. 30-JUL-2021

Add obstruction with known depth of 1.2 metres 44°37'02.9"N 063°34'22.7"W  
(See Chart No. 1, K41)  
This notice affects Electronic Navigational Chart: CA576003  
DFO(6309742-01)

Affix patch 44°37'30.0"N 063°33'40.0"W  
Download Patch - [https://www.notmar.gc.ca/chsftp/patches/4202\\_6309742\\_3\\_202109030825.pdf](https://www.notmar.gc.ca/chsftp/patches/4202_6309742_3_202109030825.pdf)  
DFO(6309742-03)

**4202 - Ocean Terminals - New Edition - 26-FEB-2016 - NAD 1983**  
01-OCT-2021

LNMD. 30-JUL-2021

Affix patch 44°37'32.0"N 063°33'45.0"W  
Download Patch - [https://www.notmar.gc.ca/chsftp/patches/4202\\_6309742\\_2\\_202109030824.pdf](https://www.notmar.gc.ca/chsftp/patches/4202_6309742_2_202109030824.pdf)  
This notice affects Electronic Navigational Chart: CA576003  
DFO(6309742-02)

**4203 - Halifax Harbour: Black Point to / à Point Pleasant - New Edition - 28-DEC-2018 - NAD 1983**  
01-OCT-2021

LNMD. 30-JUL-2021

Reposition yellow and black South cardinal lighted pillar buoy Q(6)+LFI 15s, from 44°36'07.0"N 063°32'54.5"W  
marked HKC to 44°36'07.6"N 063°32'52.0"W  
(See Chart No. 1, Q130.3)  
This notice affects Electronic Navigational Chart: CA476009, CA576002  
(F2021044) LL(526.5) DFO(6309636-01)

Reposition yellow, black and yellow West cardinal lighted pillar buoy Q(9)15s, from 44°36'35.2"N 063°32'59.6"W  
marked HKD to 44°36'35.4"N 063°32'56.3"W  
(See Chart No. 1, Q130.3)  
This notice affects Electronic Navigational Chart: CA476009, CA576002  
(F2021045) LL(526.7) DFO(6309637-01)

Reposition green port hand lighted pillar buoy FI G, marked HK17 from 44°36'21.3"N 063°33'17.6"W  
(See Chart No. 1, Qg) to 44°36'30.1"N 063°33'22.0"W  
This notice affects Electronic Navigational Chart: CA476009, CA576002  
(F2021046) LL(526.6) DFO(6309638-01)

Add obstruction with known depth of 1.2 metres 44°37'02.9"N 063°34'22.7"W  
(See Chart No. 1, K41)  
This notice affects Electronic Navigational Chart: CA576003  
DFO(6309742-01)

Affix patch 44°37'30.0"N 063°33'45.0"W  
Download Patch - [https://www.notmar.gc.ca/chsftp/patches/4203\\_6309742\\_4\\_202109030809.pdf](https://www.notmar.gc.ca/chsftp/patches/4203_6309742_4_202109030809.pdf)  
DFO(6309742-04)

**4237 - Approaches to / Approches de Halifax Harbour - New Edition - 28-MAY-2021 - World Geodetic System 1984**

01-OCT-2021

LNMD. 30-JUL-2021

Reposition yellow and black South cardinal lighted pillar buoy Q(6)+LFI 15s, from 44°36'06.7"N 063°32'54.5"W  
marked HKC to 44°36'07.6"N 063°32'52.0"W  
(See Chart No. 1, Q130.3)  
This notice affects Electronic Navigational Chart: CA476009, CA576002  
(F2021044) LL(526.5) DFO(6309636-01)

Reposition yellow, black and yellow West cardinal lighted pillar buoy Q(9)15s, from 44°36'35.2"N 063°32'59.6"W  
marked HKD to 44°36'35.4"N 063°32'56.3"W  
(See Chart No. 1, Q130.3)  
This notice affects Electronic Navigational Chart: CA476009, CA576002  
(F2021045) LL(526.7) DFO(6309637-01)

Reposition green port hand lighted pillar buoy FI G, marked HK17 from 44°36'21.3"N 063°33'17.6"W  
(See Chart No. 1, Qg) to 44°36'30.1"N 063°33'22.0"W  
This notice affects Electronic Navigational Chart: CA476009, CA576002  
(F2021046) LL(526.6) DFO(6309638-01)

**4266 - International Piers - New Edition - 28-FEB-2014 - NAD 1983**

29-OCT-2021

LNMD. 25-JUN-2021

Amend F G 8m to read Oc G 8m against light from 46°09'26.8"N 060°12'12.4"W  
(See Chart No. 1, P16)  
This notice affects Electronic Navigational Chart: CA576095  
(G2021109) LL(784) DFO(6309612-01)

**4266 - North Sydney - New Edition - 28-FEB-2014 - NAD 1983**

29-OCT-2021

LNMD. 25-JUN-2021

Delete red starboard hand lighted spar buoy Q(1) R 1s, marked SD2 from 46°12'32.7"N 060°14'10.2"W  
(See Chart No. 1, Qf)  
This notice affects Electronic Navigational Chart: CA576095  
(G2021091) LL(779.4) DFO(6309606-01)

Delete red starboard hand lighted spar buoy FI(1) R 4s, marked S6 from 46°12'28.7"N 060°14'01.2"W  
(See Chart No. 1, Qf)  
This notice affects Electronic Navigational Chart: CA576095  
(G2021135) LL(779) DFO(6309642-01)

Add red starboard hand lighted pillar buoy Q R, marked SD2 from 46°12'27.0"N 060°14'04.4"W  
(See Chart No. 1, Qf)  
This notice affects Electronic Navigational Chart: CA576095  
(G2021139) LL(778.5) DFO(6309646-01)

**4266 - Sydney Harbour - New Edition - 28-FEB-2014 - NAD 1983**

29-OCT-2021

LNMD. 25-JUN-2021

Delete red starboard hand lighted spar buoy QR, marked SD2 from 46°12'32.7"N 060°14'10.3"W  
(See Chart No. 1, Qf)  
This notice affects Electronic Navigational Chart: CA576095  
(G2021091) LL(779.4) DFO(6309606-01)

Amend F G 8m12M to read Oc G 8m16M against light from 46°09'26.8"N 060°12'12.4"W  
(See Chart No. 1, P16)  
This notice affects Electronic Navigational Chart: CA576095  
(G2021109) LL(784) DFO(6309612-01)

Delete	red starboard hand lighted pillar buoy FI R, marked S6 (See Chart No. 1, Qf) This notice affects Electronic Navigational Chart: CA576095	46°12'28.6"N 060°14'01.5"W  (G2021135) LL(779) DFO(6309642-01)
Add	red starboard hand lighted pillar buoy Q R, marked SD2 (See Chart No. 1, Qf) This notice affects Electronic Navigational Chart: CA576095	46°12'27.0"N 060°14'04.4"W  (G2021139) LL(778.5) DFO(6309646-01)
<b>4404 - Cape George to / à Pictou - New Edition - 28-FEB-2014 - NAD 1983</b>		
15-OCT-2021		LNM/D. 27-AUG-2021
Delete	red starboard hand lighted pillar buoy FI R, marked SP6 (See Chart No. 1, Qf) This notice affects Electronic Navigational Chart: CA376691, CA576246	45°42'44.0"N 062°37'25.2"W  (G2021084) LL(911.5) DFO(6309605-01)
Add	red starboard hand lighted spar buoy FI R, marked SJ2 (See Chart No. 1, Qf) This notice affects Electronic Navigational Chart: CA376691, CA576246	45°42'44.2"N 062°37'25.7"W  (G2021084) LL(900.8) DFO(6309605-02)
<b>4419 - Souris Harbour and Approches / et les approches - New Edition - 22-NOV-2002 - NAD 1983</b>		
01-OCT-2021		LNM/D. 30-APR-2021
Add	green port hand can buoy, marked NA15 (See Chart No. 1, Qg)	46°20'54.7"N 062°16'30.1"W  (G2021104) DFO(6309608-01)
Add	red starboard hand conical buoy, marked NA12 (See Chart No. 1, Qf)	46°20'49.9"N 062°16'23.0"W  (G2021105) DFO(6309609-01)
Delete	red starboard hand conical buoy, marked NA10 (See Chart No. 1, Qf)	46°20'54.1"N 062°16'24.7"W  (G2021106) DFO(6309610-01)
Add	red starboard hand spar buoy, marked NA10 (See Chart No. 1, Qf)	46°20'48.0"N 062°16'18.6"W  (G2021106) DFO(6309610-02)
Delete	green port hand spar buoy, marked NA13 (See Chart No. 1, Qg)	46°20'54.6"N 062°16'29.6"W  (G2021108) DFO(6309611-01)
Add	green port hand can buoy, marked NA13 (See Chart No. 1, Qg)	46°20'51.0"N 062°16'25.2"W  (G2021108) DFO(6309611-02)
Delete	green port hand spar buoy, marked NA11 (See Chart No. 1, Qg)	46°20'51.5"N 062°16'24.1"W  (G2021107) DFO(6309652-01)
Add	green port hand can buoy, marked NA11 (See Chart No. 1, Qg)	46°20'48.0"N 062°16'22.2"W  (G2021107) DFO(6309652-02)

**4426 - Dalhousie Harbour - New Edition - 02-AUG-2002 - NAD 1983**

01-OCT-2021

LNMD. 23-JUL-2021

Delete	green port hand lighted pillar buoy QG, marked EX7 (See Chart No. 1, Qg)	48°04'16.2"N 066°23'14.6"W <i>(G2021144) LL(1345.6) DFO(6309662-01)</i>
Add	green port hand lighted spar buoy Q G, marked EX9 (See Chart No. 1, Qg)	48°04'16.2"N 066°23'14.8"W <i>(G2021144) LL(1345.6) DFO(6309662-02)</i>

**4426 - Rivière Ristigouche / Restigouche River - New Edition - 02-AUG-2002 - NAD 1983**

01-OCT-2021

LNMD. 23-JUL-2021

Delete	red starboard hand conical buoy, marked EV14 (See Chart No. 1, Qf)	48°03'43.8"N 066°30'47.8"W <i>(G2021112) DFO(6309616-01)</i>
Add	red starboard hand spar buoy, marked EV14 (See Chart No. 1, Qf)	48°03'38.9"N 066°30'57.6"W <i>(G2021112) DFO(6309616-02)</i>
Reposition	red starboard hand spar buoy, marked EV16 (See Chart No. 1, Qf)	from 48°03'26.1"N 066°31'30.0"W to 48°03'25.8"N 066°31'38.0"W <i>(G2021113) DFO(6309617-01)</i>
Reposition	green port hand spar buoy, marked EV21 (See Chart No. 1, Qg)	from 48°02'53.4"N 066°33'16.2"W to 48°02'43.4"N 066°33'51.3"W <i>(G2021114) DFO(6309618-01)</i>
Reposition	green port hand spar buoy, marked EV27 (See Chart No. 1, Qg)	from 48°02'27.7"N 066°35'31.1"W to 48°02'28.9"N 066°35'25.0"W <i>(G2021115) DFO(6309619-01)</i>
Reposition	green port hand spar buoy, marked EV 39 (See Chart No. 1, Qg)	from 48°01'28.0"N 066°37'57.6"W to 48°01'22.7"N 066°38'08.8"W <i>(G2021116) DFO(6309620-01)</i>
Reposition	green port hand spar buoy, marked EV17 (See Chart No. 1, Qg)	from 48°03'14.1"N 066°32'11.7"W to 48°03'10.7"N 066°32'17.7"W <i>(G2021117) DFO(6309621-01)</i>
Delete	red starboard hand spar buoy, marked EW2 (See Chart No. 1, Qf)	48°04'51.2"N 066°22'01.9"W <i>(G2021119) DFO(6309623-01)</i>
Delete	red starboard hand spar buoy, marked EV12 (See Chart No. 1, Qf)	48°04'21.7"N 066°29'15.8"W <i>(G2021120) DFO(6309624-01)</i>
Delete	red starboard hand spar buoy, marked EV18 (See Chart No. 1, Qf)	48°03'15.7"N 066°32'12.4"W <i>(G2021121) DFO(6309625-01)</i>
Reposition	green port hand spar buoy, marked EV25 (See Chart No. 1, Qg)	from 48°02'34.2"N 066°34'35.9"W to 48°02'31.1"N 066°34'41.2"W <i>(G2021122) DFO(6309626-01)</i>
Reposition	green port hand spar buoy, marked EV29 (See Chart No. 1, Qg)	from 48°02'23.8"N 066°36'16.9"W to 48°02'23.6"N 066°36'08.5"W <i>(G2021123) DFO(6309627-01)</i>

Delete	red starboard hand spar buoy, marked EV34 (See Chart No. 1, Qf)	48°02'10.0"N 066°37'02.1"W <i>(G2021124) DFO(6309628-01)</i>
Add	red starboard hand spar buoy, marked EV34 (See Chart No. 1, Qf)	48°01'49.0"N 066°37'32.3"W <i>(G2021124) DFO(6309628-02)</i>
Delete	red starboard hand spar buoy, marked EV42 (See Chart No. 1, Qf)	48°01'04.2"N 066°39'09.7"W <i>(G2021125) DFO(6309629-01)</i>
Add	red starboard hand spar buoy, marked EV42 (See Chart No. 1, Qf)	48°01'00.0"N 066°39'34.0"W <i>(G2021125) DFO(6309629-02)</i>
Delete	green port hand spar buoy, marked EV3 (See Chart No. 1, Qg)	48°05'02.2"N 066°21'35.8"W <i>(G2021126) DFO(6309630-01)</i>
Add	black and yellow North cardinal spar buoy, marked EV (See Chart No. 1, Q130.3)	48°05'02.0"N 066°21'36.1"W <i>(G2021127) DFO(6309631-01)</i>
Reposition	green port hand spar buoy, marked EV9 (See Chart No. 1, Qg)	from 48°04'36.2"N 066°27'46.0"W to 48°04'31.2"N 066°28'04.6"W <i>(G2021130) DFO(6309633-01)</i>
Add	green port hand spar buoy, marked EV11 (See Chart No. 1, Qg)	48°04'00.2"N 066°29'35.1"W <i>(G2021131) DFO(6309639-01)</i>
Add	green port hand spar buoy, marked EV33 (See Chart No. 1, Qg)	48°02'08.5"N 066°36'55.5"W <i>(G2021132) DFO(6309640-01)</i>
Add	green port hand spar buoy, marked EV41 (See Chart No. 1, Qg)	48°01'06.4"N 066°38'48.3"W <i>(G2021133) DFO(6309641-01)</i>
Delete	green port hand lighted pillar buoy QG, marked EX7 (See Chart No. 1, Qg)	48°04'16.2"N 066°23'14.8"W <i>(G2021144) LL(1345.6) DFO(6309662-01)</i>
Add	green port hand lighted spar buoy Q G, marked EX9 (See Chart No. 1, Qg)	48°04'16.2"N 066°23'14.8"W <i>(G2021144) LL(1345.6) DFO(6309662-02)</i>
Delete	red starboard hand conical buoy, marked EV8 (See Chart No. 1, Qf)	48°05'08.0"N 066°26'40.6"W <i>(G2021129) DFO(6309684-01)</i>
Add	red starboard hand spar buoy, marked EV8 (See Chart No. 1, Qf)	48°05'09.0"N 066°26'35.7"W <i>(G2021129) DFO(6309684-02)</i>

**4449 - Margaree Harbour - New Edition - 03-JUL-1998 - NAD 1983**  
29-OCT-2021

LNM/D. 28-DEC-2018

Reposition	red starboard hand conical buoy, marked VH14 (See Chart No. 1, Qf)	from 46°26'26.9"N 061°06'26.5"W to 46°26'23.5"N 061°06'24.0"W <i>(G2021137) DFO(6309644-01)</i>
------------	---	---

Reposition	red starboard hand conical buoy, marked VH16 (See Chart No. 1, Qf)	from 46°26'25.2"N 061°06'25.1"W to 46°26'19.2"N 061°06'21.8"W (G2021138) DFO(6309645-01)
Reposition	red starboard hand conical buoy, marked VH10.2 (See Chart No. 1, Qf)	from 46°26'27.1"N 061°06'36.2"W to 46°26'27.4"N 061°06'35.2"W (G2021140) DFO(6309647-01)
Reposition	red starboard hand lighted pillar buoy FI R, marked VH8 (See Chart No. 1, Qf)	from 46°26'29.2"N 061°06'47.3"W to 46°26'29.1"N 061°06'46.8"W (G2021141) LL(873.1) DFO(6309648-01)

**4530 - Hamilton Sound: Eastern Portion / Partie-est - New Edition - 15-MAR-2002 - NAD 1983**

08-OCT-2021

LNMD. 10-SEP-2021

Reposition	red starboard hand lighted pillar buoy FI R, marked DX8 (See Chart No. 1, Qf) This notice affects Electronic Navigational Chart: CA476813	from 49°33'33.8"N 054°17'03.6"W to 49°33'34.1"N 054°17'12.3"W (N2021058) LL(373) DFO(6309538-01)
Add	black, yellow and black East cardinal lighted spar buoy Q(3)10s, marked DX (See Chart No. 1, Q130.3) This notice affects Electronic Navigational Chart: CA476813	49°34'07.7"N 054°15'55.5"W (N2021096) LL(372.6) DFO(6309570-01)

**4615 - Harbours in Placentia Bay / Havres dans Placentia Bay: Petit forte to / à Broad Cove Head - New Edition - 20-AUG-1999 - NAD 1983**

08-OCT-2021

LNMD. 13-NOV-2020

Delete	light FIR (See Chart No. 1, P1)	47°21'49.3"N 054°53'53.5"W (N2021122) LL(55.42) DFO(6309597-01)
Delete	red starboard hand lighted spar buoy FIR, marked PD2 (See Chart No. 1, Qf)	47°17'36.0"N 054°49'30.0"W (N2021123) LL(53.9) DFO(6309598-01)
Delete	red starboard hand lighted spar buoy FIR, marked PD4 (See Chart No. 1, Qf)	47°17'37.5"N 054°48'55.7"W (N2021124) LL(53.91) DFO(6309599-01)
Amend	FI 6s 72m 5M to read FI 4s72m7M against light (See Chart No. 1, P16) This notice affects Electronic Navigational Chart: CA276274, CA376173	47°17'53.4"N 054°42'14.2"W (N2021104) LL(52) DFO(6309657-01)
Delete	red starboard hand lighted spar buoy FIR, marked PD6 (See Chart No. 1, Qf)	47°17'37.5"N 054°48'26.5"W (N2021125) LL(53.92) DFO(6309660-01)

**4619 - Presque Harbour to / à Bar Haven Island and / et Paradise Sound - New Edition - 20-NOV-1998 - NAD 1983**

08-OCT-2021

LNMD. 30-APR-2021

Delete	red and white fairway lighted pillar whistle buoy Mo(A), marked PH (See Chart No. 1, Qh) This notice affects Electronic Navigational Chart: CA376173, CA476805	47°23'24.7"N 054°22'15.2"W (N2021110) LL(49.5) DFO(6309559-01)
--------	--	---

<b>4622 - Cape St Mary's to / à Argentinia Harbour and / et Jude Island - New Edition - 20-DEC-2019 - NAD 1983</b>		
08-OCT-2021		LNMD. 21-AUG-2020
Delete	red and white fairway lighted pillar whistle buoy Mo(A), marked PH (See Chart No. 1, Qh) This notice affects Electronic Navigational Chart: CA376173, CA476805	47°23'26.0"N 054°22'15.1"W  (N2021110) LL(49.5) DFO(6309559-01)
Amend	Fl 6s 237ft 5M to read Fl 4s237ft7M against light (See Chart No. 1, P16) This notice affects Electronic Navigational Chart: CA276274, CA376173	47°17'53.1"N 054°42'13.5"W  (N2021104) LL(52) DFO(6309657-01)
<b>4624 - Long Island to / à St. Lawrence Harbours - New Edition - 07-JAN-2000 - NAD 1983</b>		
08-OCT-2021		LNMD. 24-SEP-2021
Delete	red starboard hand lighted spar buoy FIR, marked PD2 (See Chart No. 1, Qf)	47°17'35.7"N 054°49'29.8"W  (N2021123) LL(53.9) DFO(6309598-01)
Amend	Fl 6s 72m 5M to read Fl 4s72m7M against light (See Chart No. 1, P16) This notice affects Electronic Navigational Chart: CA276274, CA376173	47°17'54.0"N 054°42'14.7"W  (N2021104) LL(52) DFO(6309657-01)
<b>4653 - Bay of Islands - New Edition - 30-MAY-2003 - NAD 1983</b>		
15-OCT-2021		LNMD. 13-NOV-2020
Amend	Fl 6s 221ft 5M to read Fl 4s221ft5M against light (See Chart No. 1, P16) This notice affects Electronic Navigational Chart: CA276138, CA476190, CA576191	49°06'31.1"N 058°25'41.2"W  (N2021118) LL(196) DFO(6309595-01)
22-OCT-2021		LNMD. 15-OCT-2021
Add	light Fl R (See Chart No. 1, P1) This notice affects Electronic Navigational Chart: CA476190	49°06'04.3"N 058°21'48.3"W  (N2021102) LL(196.6) DFO(6309655-01)
<b>4653 - Little Port - New Edition - 30-MAY-2003 - NAD 1983</b>		
15-OCT-2021		LNMD. 13-NOV-2020
Amend	Fl 6s 221ft 5M to read Fl 4s221ft5M against light (See Chart No. 1, P16) This notice affects Electronic Navigational Chart: CA276138, CA476190, CA576191	49°06'31.1"N 058°25'41.2"W  (N2021118) LL(196) DFO(6309595-01)
<b>4654 - Lark Harbour and / et York Harbour - New Edition - 25-JAN-2013 - NAD 1983</b>		
22-OCT-2021		LNMD. 22-DEC-2017
Add	light Fl R (See Chart No. 1, P1) This notice affects Electronic Navigational Chart: CA476190	49°06'04.3"N 058°21'48.3"W  (N2021102) LL(196.6) DFO(6309655-01)
<b>4661 - Bear Head to / à Cow Head - New Edition - 04-JUL-2003 - NAD 1983</b>		
15-OCT-2021		LNMD. 08-JAN-2021
Amend	Fl 6s 221ft 5M to read Fl 4s221ft5M against light (See Chart No. 1, P16) This notice affects Electronic Navigational Chart: CA276138, CA476190, CA576191	49°06'28.0"N 058°25'36.0"W  (N2021118) LL(196) DFO(6309595-01)

**4832 - Grand Bank Harbour - New Chart - 02-OCT-1987 - NAD 1983**

08-OCT-2021

LNMD. 08-JAN-2021

Delete light FIG  
(See Chart No. 1, P1)  
This notice affects Electronic Navigational Chart: CA576234

47°05'57.6"N 055°45'02.9"W

(N2021130) LL(106.51) DFO(6309602-01)

**4839 - Head of / Fond de Placentia Bay - New Edition - 28-JAN-2011 - NAD 1983**

08-OCT-2021

LNMD. 17-SEP-2021

Amend FI 3s12m to read FI 4s12m against light  
(See Chart No. 1, P16)  
This notice affects Electronic Navigational Chart: CA476079

47°49'14.0"N 054°05'52.7"W

(N2021108) LL(40) DFO(6309583-01)

**4845 - Aquaforte Harbour - New Edition - 12-SEP-1997 - NAD 1983**

08-OCT-2021

LNMD. 06-SEP-2019

Add light FI R  
(See Chart No. 1, P1)  
This notice affects Electronic Navigational Chart: CA476074

47°00'22.3"N 052°57'44.7"W

(N2021080) LL(509.53) DFO(6309556-01)

**4847 - Conception Bay - New Edition - 03-AUG-2001 - NAD 1983**

01-OCT-2021

LNMD. 13-AUG-2021

Add light FI Y  
(See Chart No. 1, P1)  
This notice affects Electronic Navigational Chart: CA376120, CA576115

47°23'46.6"N 053°09'10.7"W

(N2021081) LL(492.55) DFO(6309557-01)

**4848 - Holyrood - New Edition - 25-JUL-2008 - NAD 1983**

01-OCT-2021

LNMD. 13-AUG-2021

Add light FI Y  
(See Chart No. 1, P1)  
This notice affects Electronic Navigational Chart: CA376120, CA576115

47°23'46.6"N 053°09'10.7"W

(N2021081) LL(492.55) DFO(6309557-01)

**4854 - Catalina Harbour to / à Inner Gooseberry Islands - New Chart - 25-APR-1997 - NAD 1983**

15-OCT-2021

LNMD. 21-FEB-2020

Add light FI Y  
(See Chart No. 1, P1)  
This notice affects Electronic Navigational Chart: CA376340

48°36'27.7"N 053°24'27.1"W

(N2021135) LL(442.95) DFO(6309603-01)

**4862 - Carmanville to / à Bacalhoa Island and / et Fogo - New Chart - 26-DEC-2003 - NAD 1983**

08-OCT-2021

LNMD. 25-SEP-2020

Reposition red starboard hand lighted pillar buoy FI R, marked DX8  
(See Chart No. 1, Qf)  
This notice affects Electronic Navigational Chart: CA476813

from 49°33'33.8"N 054°17'03.6"W  
to 49°33'34.1"N 054°17'12.3"W

(N2021058) LL(373) DFO(6309538-01)

Add black, yellow and black East cardinal lighted spar buoy Q(3)10s,  
marked DX  
(See Chart No. 1, Q130.3)  
This notice affects Electronic Navigational Chart: CA476813

49°34'07.7"N 054°15'55.5"W

(N2021096) LL(372.6) DFO(6309570-01)



**4921 - Sainte-Thérèse-de-Gaspé - New Edition - 02-DEC-2016 - NAD 1983**

29-OCT-2021

LNMD. 16-JUL-2021

Affix patch 48°24'52.5"N 064°23'34.5"W  
Download Patch - [https://www.notmar.gc.ca/chsftp/patches/4921\\_6410571\\_1\\_202108200929.pdf](https://www.notmar.gc.ca/chsftp/patches/4921_6410571_1_202108200929.pdf)  
This notice affects Electronic Navigational Chart: CA579064  
*DFO(6410571-01)*

**4938 - Pictou Harbour - New Chart - 25-JAN-2019 - World Geodetic System 1984**

15-OCT-2021

LNMD. 27-AUG-2021

Delete red starboard hand lighted spar buoy FI R, marked SP6 45°42'44.2"N 062°37'25.6"W  
(See Chart No. 1, Qf)  
This notice affects Electronic Navigational Chart: CA376691, CA576246  
*(G2021084) LL(911.5) DFO(6309605-01)*

Add red starboard hand lighted spar buoy FI R, marked SJ2 45°42'44.2"N 062°37'25.7"W  
(See Chart No. 1, Qf)  
This notice affects Electronic Navigational Chart: CA376691, CA576246  
*(G2021084) LL(900.8) DFO(6309605-02)*

Delete red starboard hand conical buoy, marked SJ18 45°40'15.8"N 062°42'39.7"W  
(See Chart No. 1, Qf)  
This notice affects Electronic Navigational Chart: CA576246  
*(G2021093) DFO(6309607-01)*

**4938 - Pictou Wharves - New Chart - 25-JAN-2019 - World Geodetic System 1984**

15-OCT-2021

LNMD. 27-AUG-2021

Delete red starboard hand conical buoy, marked SJ18 45°40'15.8"N 062°42'39.7"W  
(See Chart No. 1, Qf)  
This notice affects Electronic Navigational Chart: CA576246  
*(G2021093) DFO(6309607-01)*

**4950 - Îles de la Madeleine - New Edition - 19-JUL-2013 - NAD 1983**

01-OCT-2021

LNMD. 08-JAN-2021

Amend shallower depth of fish haven from 4 metres 8 decimetres to 2 metres 1 decimetre 47°23'12.9"N 061°48'47.0"W  
This notice affects Electronic Navigational Chart: CA379216  
*DFO(6410623-01)*

**4956 - Cap-aux-Meules - New Edition - 02-SEP-2011 - NAD 1983**

29-OCT-2021

LNMD. 26-MAR-2021

Add depth of 1 metre 2 decimetres 47°22'36.4"N 061°51'23.8"W  
(See Chart No. 1, I10)  
This notice affects Electronic Navigational Chart: CA579046  
*DFO(6410634-01)*

Delete depth of 6 metres 2 decimetres 47°22'47.9"N 061°51'24.1"W  
(See Chart No. 1, I10)  
This notice affects Electronic Navigational Chart: CA579046  
*DFO(6410634-02)*

Add depth of 5 metres 3 decimetres 47°22'47.9"N 061°51'24.1"W  
(See Chart No. 1, I10)  
This notice affects Electronic Navigational Chart: CA579046  
*DFO(6410634-03)*

Delete	depth of 7 metres 1 decimetre (See Chart No. 1, I10) This notice affects Electronic Navigational Chart: CA579046	47°22'40.1"N 061°51'14.9"W  <i>DFO(6410634-04)</i>
Add	depth of 6 metres 5 decimetres (See Chart No. 1, I10) This notice affects Electronic Navigational Chart: CA579046	47°22'40.3"N 061°51'15.0"W  <i>DFO(6410634-05)</i>
Add	depth of 5 metres 8 decimetres (See Chart No. 1, I10) This notice affects Electronic Navigational Chart: CA579046	47°22'22.8"N 061°51'00.3"W  <i>DFO(6410634-06)</i>
Delete	depth of 2 metres 7 decimetres (See Chart No. 1, I10) This notice affects Electronic Navigational Chart: CA579046	47°22'37.2"N 061°51'14.5"W  <i>DFO(6410634-07)</i>
Add	depth of 2 metres 0 decimetres (See Chart No. 1, I10) This notice affects Electronic Navigational Chart: CA579046	47°22'37.4"N 061°51'14.5"W  <i>DFO(6410634-08)</i>
Add	depth of 6 metres 4 decimetres (See Chart No. 1, I10) This notice affects Electronic Navigational Chart: CA579046	47°22'36.0"N 061°51'12.0"W  <i>DFO(6410634-09)</i>
Delete	depth of 1 metre 0 decimetres (See Chart No. 1, I10) This notice affects Electronic Navigational Chart: CA579046	47°22'37.5"N 061°51'22.1"W  <i>DFO(6410634-10)</i>
Add	depth of 0 metres 6 decimetres (See Chart No. 1, I10) This notice affects Electronic Navigational Chart: CA579046	47°22'37.5"N 061°51'21.8"W  <i>DFO(6410634-11)</i>
<b>5023 - Cape Harrison to / à Nunaksaluk Island - New Edition - 30-APR-2004 - NAD 1983</b>		
01-OCT-2021		LNMD. 16-APR-2021
Delete	subsurface Ocean Data Acquisition System ODAS/SADO with known depth of 160 metres (See Chart No. 1, L25) This notice affects Electronic Navigational Chart: CA276322	55°25'10.2"N 058°49'04.8"W  <i>DFO(6309506-01)</i>
<b>5164 - Lake Melville - New Chart - 27-MAR-2020 - NAD 1983</b>		
08-OCT-2021		
Delete	red starboard hand lighted spar buoy FI R, marked H6 (See Chart No. 1, Qf) This notice affects Electronic Navigational Chart: CA376739	53°34'22.0"N 059°56'42.6"W  <i>(N2021084P) LL(297.4) DFO(6309651-01)</i>

**5165 - Epinette Point to/à Terrington Basin - New Chart - 28-FEB-2020 - NAD 1983**

08-OCT-2021

LNMD. 21-MAY-2021

Delete red starboard hand lighted spar buoy FI R, marked H6  
(See Chart No. 1, Qf)  
This notice affects Electronic Navigational Chart: CA376739

53°34'22.0"N 059°56'42.6"W

(N2021084P) LL(297.4) DFO(6309651-01)

**5179 - Alexis Bay - New Edition - 10-OCT-2003 - NAD 1983**

22-OCT-2021

LNMD. 17-SEP-2021

Reposition green port hand lighted spar buoy FIG, marked NA5  
(See Chart No. 1, Qg)

from 52°32'40.4"N 056°02'18.9"W  
to 52°32'35.6"N 056°02'24.9"W  
(N2021100) LL(270.92) DFO(6309653-01)

**6021 - Lake Muskoka - Sheet/Feuille 1 - New Edition - 30-JUL-2004 - NAD 1983**

01-OCT-2021

LNMD. 17-FEB-2017

Add red starboard hand conical buoy, marked EH12/2  
(See Chart No. 1, Qf)

45°01'21.2"N 079°23'26.0"W

(D2021028) DFO(6604797-01)

**6211 - Big Traverse Bay - New Edition - 28-FEB-2020 - NAD 1983**

01-OCT-2021

LNMD. 14-AUG-2020

Delete green port hand day beacon  
(See Chart No. 1, Qt)

49°10'14.0"N 094°21'22.0"W

(D2021029) DFO(6604805-01)

Add light 'FI G'  
(See Chart No. 1, P1)

49°10'14.0"N 094°21'22.0"W

(D2021030) LL(1507.5) DFO(6604806-01)

**6214 - Sabaskong Bay - Sheet/Feuille 2 - New Edition - 28-FEB-2020 - NAD 1983**

01-OCT-2021

Delete green port hand day beacon  
(See Chart No. 1, Qt)

49°10'14.0"N 094°21'22.0"W

(D2021029) DFO(6604805-01)

Add light 'FI G'  
(See Chart No. 1, P1)

49°10'14.0"N 094°21'22.0"W

(D2021030) LL(1507.5) DFO(6604806-01)

**8007 - Halifax to / à Sable Island / Île de Sable, Including / y compris Emerald Bank / Banc d'Émeraude and / et Sable Island Bank / Banc de l'Île de Sable - New Edition - 30-AUG-2002 - NAD 1983**

22-OCT-2021

LNMD. 03-SEP-2021

Delete lighted offshore platform Mo(U) 15M, marked Alma  
(See Chart No. 1, P2)  
This notice affects Electronic Navigational Chart: CA176140

43°35'47.0"N 060°41'19.0"W

DFO(6309440-01)

Delete legend Fog Sig (U) 30s  
(See Chart No. 1, R1)

43°35'47.0"N 060°41'19.0"W

DFO(6309440-02)

Delete lighted offshore platform Mo(U) 15M, marked Thebaud  
(See Chart No. 1, P2)  
This notice affects Electronic Navigational Chart: CA176140, CA276204, CA376289

43°53'27.0"N 060°12'00.0"W

DFO(6309440-03)

Delete	<p>legend Fog Sig (U) 30s (See Chart No. 1, R1) This notice affects Electronic Navigational Chart: CA276204, CA376289</p>	<p>43°53'27.0"N 060°12'00.0"W</p> <p style="text-align: right;"><i>DFO(6309440-04)</i></p>
Delete	<p>lighted offshore platform Mo(U) 10M, marked North Triumph (See Chart No. 1, P2) This notice affects Electronic Navigational Chart: CA176140, CA276090, CA376289</p>	<p>43°41'53.0"N 059°51'13.0"W</p> <p style="text-align: right;"><i>DFO(6309440-08)</i></p>
Delete	<p>legend Fog Sig (U) 30s (See Chart No. 1, R1) This notice affects Electronic Navigational Chart: CA176140, CA276090, CA376289</p>	<p>43°41'53.0"N 059°51'13.0"W</p> <p style="text-align: right;"><i>DFO(6309440-09)</i></p>
Delete	<p>note 'PRODUCTION PLATFORMS Production Platforms and associated structures exhibit white lights Mo(U)15M, red air obstruction lights and sound fog signals Mo(U)30s. SAFETY ZONES have been established for the protection of the production facilities, other vessels and the marine environment. Unauthorized navigation within the Safety Zone is prohibited. Mariners are advised that any vessel proposing to transit the Safety Zone must contact the operator on VHF Channel 16 and, if approved, comply with the instructions given while transiting the area. Vessel movement in the area is monitored on a 24-hour basis. For additional information, consult Notices to Mariners No. 20, Annual Edition.</p> <p>PLATE-FORMES DE PRODUCTION Les plates-formes de production et leurs structures annexes sont signalées par des feux blancs Mo(U)15M, des feux rouges d'obstacle aérien et par un signal de brume sonore Mo(U)30s. Des ZONES DE SÉCURITÉ ont été établies pour protéger les installations de production, les autres bâtiments et l'environnement marin. Toute navigation non autorisée est interdite à l'intérieur des limites de la zone de sécurité. Les navigateurs qui désirent traverser la zone de sécurité doivent contacter les responsables de la plate-forme sur la voie VHF 16 et, le cas échéant, se conformer aux instructions reçues pour traverser la zone de sécurité. Le trafic maritime est surveillé jour et nuit. Pour plus d'informations, reportez-vous aux Avis aux navigateurs n° 20, Édition annuelle.'</p> <p>(See Chart No. 1, A14) This notice affects Electronic Navigational Chart: CA176140, CA276090, CA376289</p>	<p>east border of chart at 43° 08' 35" N</p> <p style="text-align: right;"><i>DFO(6309440-21)</i></p>

## Section 3: Radio Aids to Marine Navigation Corrections

### \*1008/21 Radio Aids to Marine Navigation 2021 (Atlantic, St. Lawrence, Great Lakes, Lake Winnipeg, Arctic and Pacific)

#### Page 2-72

#### AMEND AS FOLLOWS FOR SECTION 2.6.4:

Table 2-41 - Radar Beacons Located in Northwest Territories

Name and Location	Identifier	Remarks
Atkinson Point 69°56'46.7"N 131°26'59.3"W	--•-- (Y)	Navigation season only.
Baillie Islands 70°37'38.7"N 128°15'24.8"W	-•- (K)	Navigation season only.
Cape Dalhousie 70°16'05"N 129°42'36"W (NAD27)	--•• (Z)	Navigation season only.
Hardisty Island 61°43'52.6"N 114°35'00.2"W	--• (G)	Navigation season only.
<b>Pelly Island</b> 69°37'26.2"N 135°29'15.7"W	--•-- (Y)	Navigation season only.
Pilot Islands 62°13'04"N 114°06'49.3"W	-•-• (C)	Navigation season only.
Pitt Island 69°09'15"N 136°10'30"W	-•- (K)	Navigation season only.
Pullen Island 69°46'26.2"N 134°24'15.7"W	--• (G)	Navigation season only.
Relief Islet 70°08'45"N 130°49'30"W (NAD27)	--• (G)	Navigation season only.
Tuktoyaktuk Island 69°27'21.2"N 132°59'58.8"W	-•-• (C)	Navigation season only.
Warren Point 69°45'00"N 132°21'30"W	-•-• (C)	Navigation season only.

## Section 4: Sailing Directions and Small Craft Guide Corrections

---

ATL 108 — Gulf of St. Lawrence (Southwest Portion), First Edition, 2006 —

Chapter 4 — Paragraph 273

Delete: of 2.6 m (2016)

Replace by: of 2.2 m (2020)

(Q2021-036)

ATL 110 — St. Lawrence River — Cap Whittle/Cap Gaspé to Les Escoumins and Anticosti Island, Third Edition, 2011 —

Chapter 1 — Paragraph 318

Delete: 99 m

Replace by: 105 m

(Q2021-027.1)

Chapter 1 — Paragraph 352

Delete: 46 m

Replace by: 35 m

(Q2021-027.2)

Chapter 2 — Paragraph 125

Delete: 0.3 to 0.6 m alongside the wharf (2016).

Replace by: 0.7 to 1.6 m alongside the wharf (2020).

(Q2021-033.1)

Chapter 3 — Paragraph 32

Delete: **Marine farm** facilities, generally marked by yellow cautionary buoys, are located in a bay 4.5 miles west of Godbout;

(Q2021-035.1)

Chapter 3 — Paragraph 38

Delete: **Marine farm** facilities, generally marked by yellow cautionary buoys, are located in a bay 1.5 miles SW of the municipality; mariners should proceed with caution in these areas.

(Q2021-035.2)

Chapter 3 — Delete paragraph 78

(Q2021-035.3)

ATL 111 — St. Lawrence River — Île Verte to Québec and Fjord du Saguenay, Third Edition, 2007 —

Chapter 1 — Paragraph 61

Delete: 41 m

Replace by: 46 m

(Q2021-028.1)

Chapter 1 — Paragraph 61

Delete: A long **floating dock** offers a landing pier for tour boats, close north of the north pier.

(Q2021-014.1)

Chapter 2 — After paragraph 93

Insert: 93.1 A **launch ramp** is available at Pointe de Lévy,  
approximately 0.5 miles upstream of the shipyard.

(Q2021-012.1)

ATL 112 — St. Lawrence River — Cap-Rouge to Montréal and Rivière Richelieu, Third Edition, 2009 —

Chapter 1 — Paragraph 156

Delete: \*33 m

Replace by: \*37 m

(Q2021-030.1)

Chapter 1 — Paragraph 156

Delete: 128 m

Replace by: 124 m

(Q2021-030.2)

CEN 308 — Rideau Canal and Ottawa River, First Edition, 2003 —

Chapter 8 — At the end of paragraph 115.1

Insert: Anchorage prohibited signs are posted at the cable entry  
points on each side of the Ottawa River.

(Q2021-025.01)

Chapter 8 — Paragraph 133

Delete : 13,7 m

Replace by : 13,4 m

(Q2021-026.1)

Chapter 8 — Paragraph 133

Delete : 51,8 m

Replace by : 54,8 m

(Q2021-026.2)

Chapter 8 — Paragraph 133

Delete : 12,5 m

Replace by : 11,8 m

(Q2021-026.3)

## Section 5: List of Lights, Buoys and Fog Signals Corrections

The amendments are highlighted and deletions are crossed out. For general and region-specific information on the List of Lights, click on the following links: [Newfoundland and Labrador Coast](#), [Atlantic Coast](#), [Inland Waters](#) and [Pacific Coast](#).

No.	Name	Position ----- Latitude N. Longitude W.	Light Characteristics	Focal Height in m. above water	Nomi- nal Range	Description ----- Height in meters above ground	Remarks ----- Fog Signals
-----	------	--	--------------------------	--	-----------------------	--	---------------------------------

### NEWFOUNDLAND AND LABRADOR COAST

#### ST. MARY'S BAY (LL 7.5 – 14)

8.2 <del>H0435</del>	Riverhead Wharf Light	46 57 47.0 053 31 20.5	Fl G 4s	4.3	4	Mast.  2.4	Flash 1 s; eclipse 3 s. Year round.  Chart:4843 Edn 10/21 (N21-152)
-------------------------	--------------------------	---------------------------	---------	-----	---	------------------	---

#### PLACENTIA BAY (LL 14.4 – 79)

40 <del>H0390</del>	North Harbour Point Light	North Harbour. 47 49 14.0 054 05 52.7	Fl W 4s	11.8	5	Square skeleton tower, red and white square daymark. 4.3	Flash 1 s; eclipse 3 s. Seasonal.  Chart:4839 Edn 10/21 (N21-108)
49.2 <del>H0387</del>	West Head Light	Merashheen Island. 47 24 09.8 054 21 48.8	Fl W 4s	18.6	8	Cylindrical Mast. 2.4	Flash 1 s; eclipse 3 s. Year round.  Chart:4619 Edn 10/21 (N21-106)
49.5	<del>Merashheen Harbour light and whistle buoy PH</del>						<del>Delete from list.</del>  Chart:4619 Edn 10/21 (N21-110)
52 <del>H0380</del>	Long Island Light	At SW end of island. 47 17 53.1 054 42 14.5	Fl W 4s	72.7	7	Square skeleton tower. 8.5	Flash 1 s; eclipse 3 s. Year round.  Chart:4615 Edn 10/21 (N21-104)
53 <del>H0382</del>	Petit Forte Light	At Eastern Head. 47 23 09.5 054 39 27.8	Fl W 4s	11.5	7	Square skeleton tower, red and white rectangular daymark. 4.6	Flash 1 s; eclipse 3 s. Year round.  Chart:4615 Edn 10/21 (N21-105)
53.9	<del>Chimmleys light buoy PD2</del>						<del>Delete from list.</del>  Chart:4615 Edn 10/21 (N21-123)
53.91	<del>Oderin Harbour Middle light buoy PD4</del>						<del>Delete from list.</del>  Chart:4615 Edn 10/21 (N21-124)
53.92	<del>Oderin Harbour Inner light buoy PD6</del>						<del>Delete from list.</del>  Chart:4615 Edn 10/21 (N21-125)
54 <del>H0379.7</del>	Oderin Harbour Entrance Light	47 17 39.9 054 49 17.6	Fl W 4s	11.9	5	Square skeleton tower, red and white rectangular daymark. 3.8	Flash 1 s; eclipse 3 s. Year round.  Chart:4615 Edn 10/21 (N21-121)



Notices to Mariners – Monthly Eastern Edition  
Section 5: List of Lights, Buoys and Fog Signals Corrections

No.	Name	Position ----- Latitude N. Longitude W.	Light Characteristics	Focal Height in m. above water	Nomi- nal Range	Description ----- Height in meters above ground	Remarks ----- Fog Signals
55.42	Baine Harbour Floating Dock						Delete from list.  Chart:4615 Edn 10/21 (N21-122)
68.55 H0367.6	Burin Breakwater Light	Burin Harbour. 47 01 53.1 056 10 20.2	Fl G 4s	5.1	4	Cylindrical mast.	Flash 1 s; eclipse 3 s. Operates 24 h. Year round.  Chart:4616 Edn 10/21 (N21-116)
<b>FORTUNE BAY (LL 100 – 120.1)</b>							
106.51	Grand Bank Floating Dock						Delete from list.  Chart:4832 Edn 10/21 (N21-130)
<b>SOUTHWEST COAST (LL 121 – 172)</b>							
132 H0287	Little Bay Light (Tinker Rock)	47 36 49.7 056 03 08.1	Fl W 4s	14.6	7	Square skeleton tower, red and white rectangular daymark.  3.6	Year round.  Chart:4644 Edn 10/21 (N21-117)
<b>WEST COAST (LL 173 – 208.2)</b>							
196 H0194	Little Port Head Light	Bay of Islands. 49 06 31.1 058 25 41.2	Fl W 4s	67.4	5	Square skeleton tower, red and white rectangular daymark.  4.3	Flash 1 s; eclipse 3 s. Operates 24 h. Seasonal.  Chart:4653 Edn 10/21 (N21-118)
196.6	Lark Harbour Wharf Light	On wharf. 49 06 04.3 058 21 48.3	Fl R 4s	.....	2	Mast.	Flash 1 s; eclipse 3 s. Operates 24 h. Seasonal.  Chart:4654 Edn 10/21 (N21-102)
<b>STRAIT OF BELLE ISLE (LL 211 – 234)</b>							
233.25	Cooks Harbour Wharf Light	On outer edge of wharf. 51 36 23.7 055 51 43.6	Fl R 4s	.....	2	Mast.	Flash 1 s; eclipse 3 s. Operates 24 h. Seasonal.  Chart:4509 Edn 10/21 (N21-161)
<b>NEWFOUNDLAND AND LABRADOR COAST (LL 269.99 – 325.23)</b>							
271	Grove Island Tickle North light buoy NA8	E. of island. 52 32 22.9 056 09 21.5	Fl R 4s	.....	.....	Red spar, marked "NA8".	Seasonal.  Chart:5179 Edn 10/21 (N21-136)
272	Grove Island Tickle South light buoy NA9	SE. of island. 52 32 06.7 056 09 35.8	Fl G 4s	.....	.....	Green spar, marked "NA9".	Seasonal.  Chart:5179 Edn 10/21 (N21-137)
279.8 H0086.2	Cape Bluff Light	N. of St. Michaels Bay. 52 50 13.2 055 48 24.0	Fl W 4s	54.7	4	Mast, red and white rectangular daymark.  3.0	Flash 1 s; eclipse 3 s. Seasonal.  Chart:5032 Edn 10/21 (N21-129)

Notices to Mariners – Monthly Eastern Edition  
Section 5: List of Lights, Buoys and Fog Signals Corrections

No.	Name	Position ----- Latitude N. Longitude W.	Light Characteristics	Focal Height in m. above water	Nomi- nal Range	Description ----- Height in meters above ground	Remarks ----- Fog Signals
<b>NOTRE DAME BAY (LL 326 – 346.4, 354 – 395)</b>							
372.6	Stag Harbour Run East Cardinal light buoy DX	Stag Harbour, 49 34 07.7 054 15 55.5	Q(3) W 10s	.....	.....	Black, yellow and black spar, marked "DX".	Operates 24 h. Seasonal.  Chart:4530 Edn 10/21 (N21-096)
373	Stag Rock light buoy DX8	Stag Harbour, 49 33 34.2 054 17 12.3	Fl R 4s	.....	.....	Red, marked "DX8".	Seasonal.  Chart:4530 Edn 10/21 (N21-058)
387	Frederickton Harbour Outer light buoy DK6	49 25 53.7 054 21 12.8	Fl R 4s	.....	.....	Red spar, marked "DK6".	Seasonal.  Chart:4862 Edn 10/21 (N21-031)
<b>BONAVISTA BAY (LL 396 – 449.5)</b>							
440 H0543.5	Salvage Harbour Light	Harbour entrance, 48 41 32.7 053 38 42.9	Fl G 4s	5.7	4	Square skeleton tower, green and white rectangular daymark. 4.2	Flash 1 s; eclipse 3 s. Seasonal.  Chart:4855 Edn 10/21 (N21-151)
442.13 H0540.6	Tickle Cove Wharf Light	48 35 01.8 053 28 59.7	Fl G 4s	.....	2	Cylindrical Mast. 2.6	Flash 1 s; eclipse 3 s. Seasonal.  Chart:4854 Edn 10/21 (N21-142)
442.95	Keels Wharf Light	48 36 27.7 053 24 27.1	Fl Y 4s	.....	2	Mast.	Flash 1 s; eclipse 3 s. Operates 24 h. Seasonal.  Chart:4854 Edn 10/21 (N21-135)
443.1 H0540.1	King's Cove Wharf Light	48 34 03.9 053 19 57.4	Fl R 4s	.....	4	Mast. 2.4	Flash 1 s; eclipse 3 s. Year round.  Chart:4854 Edn 10/21 (N21-144)
<b>TRINITY BAY (LL 450.1 – 471.51)</b>							
463.3 H0519	Old Bonaventure Wharf Light	Outer corner of wharf. 48 17 06.2 053 25 39.5	Fl G 4s	.....	2	Mast. 2.6	Flash 1 s; eclipse 3 s. Year round.  Chart:4853 Edn 10/21 (N21-145)
467.5 H0511	Whiteway Breakwater Light	On end of breakwater. 47 41 45.3 053 28 53.5	Fl G 4s	4.4	4	Cylindrical Mast. 2.6	Flash 1 s; eclipse 3 s. Year round.  Chart:4851 Edn 10/21 (N21-149, 164)
470.7 H0503	Old Perican Inner Breakwater Light	On seaward end of outermost breakwater. 48 05 12.6 053 00 36.3	Fl G 3s	4.0	4	Cylindrical Mast. 2.6	Flash 0.5 s; eclipse 2.5 s. Year round.  Chart:4850 Edn 10/21 (N21-156)

Notices to Mariners – Monthly Eastern Edition  
Section 5: List of Lights, Buoys and Fog Signals Corrections

No.	Name	Position ----- Latitude N. Longitude W.	Light Characteristics	Focal Height in m. above water	Nomi- nal Range	Description ----- Height in meters above ground	Remarks ----- Fog Signals
-----	------	--	--------------------------	--	-----------------------	--	---------------------------------

**CONCEPTION BAY (LL 471.7 – 498.5)**

492.55	North Arm Wharf Light	On seaward end of SCH wharf. 47 23 46.6 053 09 10.7	Fl Y 4s	.....	2	Pipe tower.	Flash 1 s; eclipse 3 s. Operates 24 h. Year round.  Chart:4848 Edn 10/21 (N21-081)
--------	-----------------------	---	---------	-------	---	-------------	---

**CAPE ST. FRANCIS TO RENEWS (LL 499 – 516)**

509.53	Aquaforte Inner Wharf Light	On outside corner of inner wharf. 47 00 22.3 052 57 44.7	Fl R 4s	.....	4	Mast.	Flash 1 s; eclipse 3 s. Operates 24 h. Year round.  Chart:4845 Edn 10/21 (N21-080)
--------	-----------------------------	--	---------	-------	---	-------	---

**ATLANTIC COAST**

**NOVA SCOTIA, SOUTHEAST COAST (LL 327 – 684.02)**

526.5	Middle Ground South Cardinal light buoy HKC	44 36 07.6 063 32 52.0	Q(6)+ W 15s LFl	.....	.....	Yellow and black, marked "HKC".	Operates 24 h. Year round.  Chart:4203 Edn 10/21 (F21-025, 044)
526.6	Fergusons Cove light buoy HK17	44 36 30.1 063 33 22.0	Fl G 4s	.....	.....	Green, marked "HK17".	Operates 24 h. Year round.  Chart:4203 Edn 10/21 (F21-026, 046)
526.7	Middle Ground West Cardinal light buoy HKD	44 36 35.4 063 32 56.3	Q(9) W 15s	.....	.....	Yellow, black and yellow, marked "HKD".	Operates 24 h. Year round.  Chart:4203 Edn 10/21 (F21-027, 045)
560.6	Navy Island Cautionary light buoy HYC	W. of Island. 44 41 43.8 063 37 06.6	Fl Y 4s	.....	.....	Yellow spar, marked "HYC".	Operates 24 h. Year round.  Chart:4201 Edn 10/21 (F21-042)

**CAPE BRETON ISLAND, N.S. (LL 704.85 – 882.5)**

778.5	Sydney Northwest Bar light buoy SD2	46 12 27.0 060 14 04.4	Q R 1s	.....	.....	Red, marked "SD2".	Seasonal.  Chart:4266 Edn 10/21 (G21-139)
779	Sydney Northwest Bar light buoy S6						Delete from list.  Chart:4266 Edn 10/21 (G21-135)
779.4	Northwest Bar light buoy SD2						Delete from list.  Chart:4266 Edn 10/21 (G21-091)
873.1	Margaree Harbour light buoy VH8	46 26 29.1 061 06 46.8	Fl R 4s	.....	.....	Red, marked "VH8".	Seasonal.  Chart:4449 Edn 10/21 (G21-141)

Notices to Mariners – Monthly Eastern Edition  
Section 5: List of Lights, Buoys and Fog Signals Corrections

No.	Name	Position ----- Latitude N. Longitude W.	Light Characteristics	Focal Height in m. above water	Nomi- nal Range	Description ----- Height in meters above ground	Remarks ----- Fog Signals
<b>GULF OF ST. LAWRENCE (LL 883.2 – 940.3, 1169.1 – 1426, 1477.5 – 1584)</b>							
911.5 900.8	Macdonald Reef light buoy SJ2	E. of reef. 45 42 44.2 062 37 25.7	Fl R 4s	.....	.....	Red spar, marked "SJ2".	Seasonal.  Chart:4938 Edn 10/21 (G21-084)
1248.11	Shippegan Gully light buoy TJ4	47 42 48.0 064 39 30.6	Fl R 4s	.....	.....	Red spar, marked "TJ4".	Operates 24 h. Seasonal.  Chart:4920 Edn 10/21 (G21-153, 182)
1248.12	Shippegan Gully light buoy TJ5	47 42 40.8 064 39 38.3	Q G 1s	.....	.....	Green spar, marked "TJ5".	Buoy may be repositioned due to shifting channel. Seasonal.  Chart:4920 Edn 10/21 (G21-154, 183)
1248.13	Shippegan South Gully light buoy TJ6	47 42 49.9 064 39 42.8	Fl R 4s	.....	.....	Red spar, marked "TJ6".	Buoy may be repositioned due to shifting channel. Seasonal.  Chart:4920 Edn 10/21 (G21-155, 184)
1248.151	Shippegan South Gully light buoy TJ8	47 42 55.1 064 39 51.0	Q R 1s	.....	.....	Red spar, marked "TJ8".	Seasonal.  Chart:4920 Edn 10/21 (G21-157, 186)
1248.51	Shippegan Gully light buoy TJ9	47 42 50.2 064 39 56.4	Fl G 4s	.....	.....	Green spar, marked "TJ9".	Operates 24 h. Seasonal.  Chart:4920 Edn 10/21 (G21-158, 187)
1248.71	Shippegan Gully light buoy TJ14	47 43 08.4 064 40 00.7	Fl R 4s	.....	.....	Red, marked "TJ14".	Seasonal.  Chart:4920 Edn 10/21 (G21-160)
1249.1	Shippegan Gully light buoy TJ12	47 43 02.6 064 39 52.6	Fl R 4s	.....	.....	Red, marked "TJ12".	Operates 24 h. Seasonal.  Chart:4920 Edn 10/21 (G21-159, 188)
1250.7	Shippegan Gully Cautionary light buoy TJA	47 43 23.6 064 40 05.6	Fl Y 4s	.....	.....	Yellow, marked "TJA".	Buoy may be repositioned due to shifting channel. Seasonal.  Chart:4920 Edn 10/21 (G21-165)
1253	Shippegan Gully slight buoy TJ20	47 43 12.7 064 40 03.9	Q R 1s	.....	.....	Red, marked "TJ20".	(Winter spar.) Buoy may be repositioned due to shifting channel. Seasonal.  Chart:4920 Edn 10/21 (G21-161)
1253.1	Shippegan Gully light buoy TJ22	47 43 18.6 064 40 04.0	Q R 1s	.....	.....	Red, marked "TJ22".	(Winter spar.) Seasonal.  Chart:4920 Edn 10/21 (G21-164)

Notices to Mariners – Monthly Eastern Edition  
Section 5: List of Lights, Buoys and Fog Signals Corrections

No.	Name	Position ----- Latitude N. Longitude W.	Light Characteristics	Focal Height in m. above water	Nomi- nal Range	Description ----- Height in meters above ground	Remarks ----- Fog Signals
1257.3	Shippegan <b>South</b> Gully light buoy TJ26	47 43 <b>25.1</b> 064 40 <b>02.8</b>	Fl R 4s	.....	.....	Red, marked "TJ26".	(Winter spar.) Seasonal.  Chart:4920 Edn 10/21 (G21-166, 189)
1257.7	Shippegan <b>South</b> Gully light buoy TJ29	47 43 <b>34.0</b> 064 40 <b>02.0</b>	Q G 1s	.....	.....	Green <b>spar</b> , marked "TJ29".	Buoy may be repositioned due to shifting channel. Seasonal.  Chart:4920 Edn 10/21 (G21-169)
1258.1	Shippegan <b>South</b> Gully light buoy TJ31	47 43 <b>41.9</b> 064 40 <b>03.2</b>	Fl G 4s	.....	.....	Green <b>spar</b> , <b>marked</b> "TJ31".	Buoy may be repositioned due to shifting channel. Seasonal.  Chart:4920 Edn 10/21 (G21-170)
1258.12	Shippegan <b>South</b> Gully light buoy TJ32	47 43 <b>42.5</b> 064 40 <b>01.3</b>	Fl R 4s	.....	.....	Red <b>spar</b> , <b>marked</b> "TJ32".	Buoy may be repositioned due to shifting channel. Seasonal.  Chart:4920 Edn 10/21 (G21-171)
1260	Shippegan <b>Gully</b> light buoy <b>TJ36</b>	47 43 <b>50.6</b> 064 40 <b>06.7</b>	Q R 1s	.....	.....	Red, marked <b>"TJ36"</b> .	(Winter spar.) Buoy may be repositioned due to shifting channel. Seasonal. <del>(Winter spar.)</del>  Chart:4920 Edn 10/21 (G21-192, 207)
1261.55	Shippegan <b>Gully</b> light buoy TJ55	47 44 <b>19.6</b> 064 41 <b>07.3</b>	Fl G 4s	.....	.....	Green <b>spar</b> , marked "TJ55".	Buoy may be repositioned due to shifting channel. Seasonal (in place year round).  Chart:4920 Edn 10/21 (G21-201, 214)
1262.16	Fox Dens Gully light buoy TK10	47 53 <b>08.7</b> 064 30 <b>09.7</b>	Fl R 4s	.....	.....	Red, marked "TK10".	Operates 24 h. Seasonal.  Chart:4913 Edn 10/21 (G21-210)
<b>1262.17</b>	<b>Fox Dens Gully</b> light buoy <b>TK11</b>	<b>47 53 06.8</b> <b>064 30 14.6</b>	<b>Fl G 4s</b>	<b>.....</b>	<b>.....</b>	<b>Green, marked "TK11".</b>	<b>Seasonal.</b>  Chart:4913 Edn 10/21 (G21-217)
1262.18	Fox Dens Gully light buoy TK12	47 53 <b>07.7</b> 064 30 <b>20.2</b>	Fl R 4s	.....	.....	Red, marked "TK12".	Seasonal.  Chart:4913 Edn 10/21 (G21-211)
1262.75	Fox Dens Gully light buoy TK15	47 53 <b>07.7</b> 064 30 <b>20.2</b>	Q G 1s	.....	.....	Green, marked "TK15".	Buoy may be repositioned due to shifting channel. Seasonal.  Chart:4913 Edn 10/21 (G21-212)
1345.6	Dalhousie Harbour light buoy <b>EX9</b>	48 04 16.2 066 23 14.9	Q G 1s	.....	.....	Green <b>spar</b> , marked <b>"EX9"</b> .	Buoy may be repositioned due to shifting channel. Seasonal.  Chart:4426 Edn 10/21 (G21-144)

Notices to Mariners – Monthly Eastern Edition  
Section 5: List of Lights, Buoys and Fog Signals Corrections

No.	Name	Position ----- Latitude N. Longitude W.	Light Characteristics	Focal Height in m. above water	Nomi- nal Range	Description ----- Height in meters above ground	Remarks ----- Fog Signals
-----	------	--	--------------------------	--	-----------------------	--	---------------------------------

**PRINCE EDWARD ISLAND (LL 942 – 1084.7)**

957 H0939	Lower Montague Wharf	NW. corner of wharf. 46 10 14.2 062 33 46.5	Fl G 4s	6.0	4	Pipe swing pole. 5.1	Flash 1 s; eclipse 3 s. Seasonal.  Chart:4935 Edn 10/21 (G21-209)
967 H0956	Beach Point Breakwater	On outer end, E. breakwater. 46 01 00.3 062 29 12.9	Fl G 4s	....	4	Pipe swing pole. 10.2	Seasonal.  Chart:4935 Edn 10/21 (G21-208)

**INLAND WATERS**

**LAKE OF THE WOODS (LL 1470 – 1514.9)**

1507.5	Sunset Chain Channel	S. of channel. 49 10 14.0 094 21 22.0	Fl G 4s	....	6	Cylindrical mast, red and white rectangular daymark with green square in centre. 4.9	Seasonal.  Chart:6214 Edn 10/21 (D21-030)
--------	-------------------------	---	---------	------	---	--	--