



Fisheries and Oceans
Canada

Pêches et Océans
Canada

Canadian
Coast Guard

Garde côtière
canadienne

Notices to Mariners

Edition No. 05/2021
May 28, 2021



Safety First, Service Always

Monthly Eastern Edition

Canada 

Notices to Mariners – Monthly Eastern Edition
Edition No. 05/2021

Aussi disponible en français :
Avis aux navigateurs – Édition mensuelle de l'Est
Édition n° 05/2021

Published under the Authority of:

Canadian Coast Guard Programs
Aids to Navigation and Waterways
Fisheries and Oceans Canada
Montreal, QC H2Y 2E7

For more information, contact Notmar.XNCR@dfo-mpo.gc.ca.

© Her Majesty the Queen in Right of Canada,
as represented by the Minister of Fisheries, Oceans
and the Canadian Coast Guard, 2021.

Cat. No. Fs152-5E-PDF (Electronic PDF, English)
ISSN 1719-7678

Cat. No. Fs152-5F-PDF (Electronic PDF, French)
ISSN 1719-7694

A web version is available here:

<https://www.notmar.gc.ca/monthly-mensuel-en.php> (English)

<https://www.notmar.gc.ca/monthly-mensuel-fr.php> (French)

Explanatory Notes – Notices to Mariners (NOTMAR)

Geographical positions refer directly to the graduations of the largest scale Canadian Hydrographic Service chart (unless otherwise indicated).

Bearings refer to the true compass and are measured clockwise from 000° (North) clockwise to 359°; those relating to lights are from seaward.

Visibility of lights is that in clear weather.

Depths - The units used for soundings (metres, fathoms or feet) are stated in the title of each chart.

Elevations are normally given above Higher High Water, Large Tide (unless otherwise indicated).

Distances may be calculated as follows:

1 nautical mile = 1,852 metres (6,076.1 feet)

1 statute mile = 1,609.3 metres (5,280 feet)

1 metre = 3.28 feet

Temporary and Preliminary Notices to Mariners – Section 1A of *Notices to Mariners*

These notices are indicated by a (T) or a (P), respectively. Please note that nautical charts are not amended by the Canadian Hydrographic Service for temporary (T) and preliminary (P) notices. It is recommended that mariners chart these corrections in pencil. For the list of charts affected by (T) & (P) notices, please refer to the current [Notices to Mariners - Monthly Summary of Temporary and Preliminary Notices](#) publication.

Please note: In addition to the temporary and preliminary changes normally advertised as (T) & (P) notices, there are a few permanent changes to aids to navigation that have been advertised as preliminary Notices to Mariners while charts are being updated for new editions.

Marine Information Report and Suggestion Sheet

Mariners are requested to notify the responsible authorities when new or suspected dangers to navigation are discovered, changes observed in aids to navigation or corrections to publications are seen to be necessary. Such communications can be made using the [“Marine Information Report and Suggestion Sheet”](#) (fillable PDF form) and is inserted on the last page of each monthly edition of *Notices to Mariners*.

NOTMAR Website – Monthly Editions, Chart Corrections and Chart Patches

The NOTMAR website allows users to access the [monthly publications](#), [chart corrections](#), and [chart patches](#).

Users can subscribe for free to the [email notification service](#) to receive notifications when charts of interest are updated, including their patches, as well as when a new monthly edition becomes available online.

In addition, the monthly publication and related files to download, such as chart patches and *Sailing Directions* diagrams, can be obtained all together through the download of a single ZIP file.

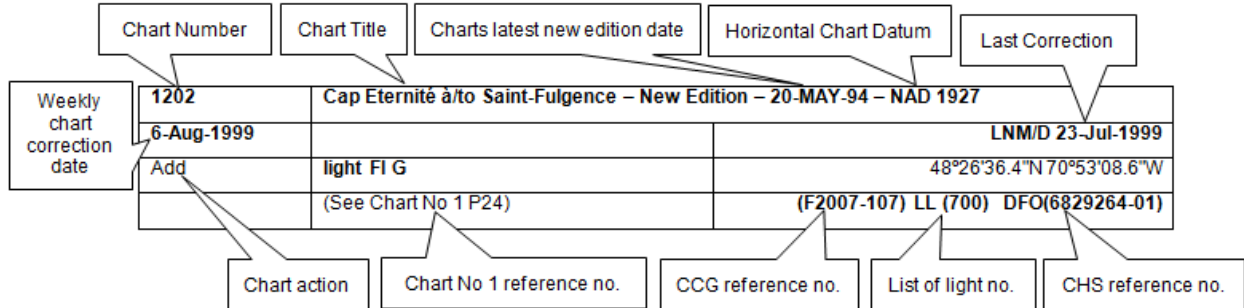
Explanatory Notes – Canadian Hydrographic Service (CHS)

Chart Corrections – Section 2 of *Notices to Mariners*

Corrections to nautical charts will be listed in numerical order by chart number. Each chart correction listed applies only to that particular chart. Related charts, if any, will have their own specific correction listed separately.

Users should also refer to CHS *Chart 1: Symbols, Abbreviations and Terms* for additional information pertaining to the correction of charts.

The illustration below describes the elements that will comprise a typical Section 2 chart correction:



The last correction number is identified with the **LNMD** or **Last Notice to Mariners Number / Date**.

Mariners are advised that only the most critical changes that directly affect safety to navigation are issued in “Section 2 – Chart Corrections.” This limitation is required to ensure that charts remain as clear and easy to read as possible. As a result, mariners may see minor discrepancies of a non-critical nature between information in official publications. For example, a small change in the nominal range or focal height of a light may not result in the production of a chart correction in *Notices to Mariners*, but may result in a correction in the [List of Lights, Buoys and Fog Signals](#) publication.

Note: In the case of a discrepancy between information provided on CHS charts relating to aids to navigation, and the *List of Lights, Buoys and Fog Signals* publication, the latter shall be deemed as containing the most up-to-date information.

Canadian Nautical Charts & Publications

A source list of Canadian nautical charts and publications is published in Notice No. 14 of the *Notices to Mariners Annual Edition 2020*. The source supply and the prices effective at the time of printing are listed. For current chart edition dates, please refer to the following website: www.chs-shc.gc.ca/charts-cartes/paper-papier/index-eng.asp.

Explanatory Notes – Marine Communications and Traffic Services (MCTS)

Navigational Warnings / Notices to Shipping

The Canadian Coast Guard (CCG) is implementing a number of changes to the aids to navigation system in Canada.

These changes are advertised as Navigational Warnings, formerly called Notices to Shipping¹, that are broadcast by the CCG, and are then followed up with Notices to Mariners, then charts are updated by hand correction, reprints or new editions.

Mariners are advised that all relevant Navigational Warnings (NAVWARNs) should be kept until superseded by Notices to Mariners or through revised charts issued by the Canadian Hydrographic Service (CHS).

NAVWARNs are accessible on the applicable regional page on the CCG Navigational Warnings website at <http://nis.ccg-gcc.gc.ca>.

CHS is reviewing the impact of these changes with CCG and together are preparing an action plan on the issuing of chart revisions.

For further information, contact your regional NAVWARN Issuing Desk.

<p>Atlantic Region (North) *Port aux Basques MCTS Centre</p> <p>“N” Series NAVWARNs</p> <p>Canadian Coast Guard 49 Stadium Rd. P.O. Box 99 Port aux Basques, NL A0M 1C0</p> <p>Telephone: 709-695-2168 or 1-800-563-9089 Facsimile: 709-695-7784</p> <p>Email: NAVWARN.MCTSPortAuxBasques@innav.gc.ca</p>	<p>Central Region *Prescott MCTS Centre</p> <p>“Q” and “C” Series NAVWARNs</p> <p>Canadian Coast Guard 401 King Street West P.O. Box 1000 Prescott, ON K0E 1T0</p> <p>Telephone: 613-925-0666 Facsimile: 613-925-4519</p> <p>Email: NAVWARN.MCTSPrescott@innav.gc.ca</p>
<p>Atlantic Region (South) *Sydney MCTS Centre</p> <p>“M” Series NAVWARNs</p> <p>Canadian Coast Guard 1190 Westmount Road Sydney, NS B1R 2J6</p> <p>Telephone: 902-564-7751 or 1-800-686-8676 Facsimile: 902-564-7662</p> <p>Email: NAVWARN.MCTSSydney@innav.gc.ca</p>	<p>Arctic Region *Iqaluit MCTS Centre</p> <p><i>Operational from approximately mid-May until late December.</i></p> <p>“A” and “H” Series NAVWARNs</p> <p>Canadian Coast Guard P.O. Box 189 Iqaluit, NU X0A 0H0</p> <p><u>“A” Series NAVWARNs</u> Telephone: 867-979-5269</p> <p><u>“H” Series NAVWARNs</u> Telephone: 867-979-0310 Facsimile: 867-979-4264</p> <p>Email: NAVWARN.MCTSIqaluit@innav.gc.ca</p>

*Service available in English and in French.

¹ The expression “Notice to Shipping” was changed to “Navigational Warning” in January 2019.

Table of Contents

Section 1: General and Safety Information	1
Canadian Coast Guard Publication – Comments and Suggestions on Notices to Mariners (NOTMAR) Publications	1
Transport Canada – COVID-19 Measures, Updates and Guidance.....	1
Canadian Hydrographic Service – Canadian Tide and Current Tables – Printing to be Discontinued ..	1
Canadian Hydrographic Service – Chart 1 – Printing to be Discontinued	1
Canadian Hydrographic Service – Notices to Mariners for Changes in Buoy Shape.....	2
Gulf of St. Lawrence – Protection of the North Atlantic Right Whale	2
Saguenay – St. Lawrence Marine Park - Beluga Whale Protection: Slowdown Area at the Mouth of the Saguenay Fjord and Area Closure at Baie Sainte-Marguerite.....	9
Saguenay – St. Lawrence Marine Park and Surrounding Waters – Whale Protection.....	12
*501/21 Canadian Hydrographic Service – Nautical Charts.....	13
*502/21 Canadian Hydrographic Service – Electronic Navigational Charts.....	13
*503/21 Canadian Hydrographic Service – Raster Digital Charts (BSB V3).....	15
*504/21 Canadian Hydrographic Service – Publications to be Discontinued.....	15
*505/21 Environment and Climate Change Canada – Iridium Safetycast Service	15
*507/21 Puvirnituk et les approches / and Approches – Radar Beacon Permanently Established..	16
Section 1A: Temporary and Preliminary Notices	17
Reminder – Comment Period for Active Preliminary Notices	17
*508(T)/21 Port de Québec – Wharf Construction.....	18
*509(P)/21 Chebucto Head to / à Betty Island – Fog Signal to be Discontinued	18
Section 2: Chart Corrections	19
Section 3: Radio Aids to Marine Navigation Corrections	30
*510/21 Radio Aids to Marine Navigation 2021 (Atlantic, St. Lawrence, Great Lakes, Lake Winnipeg, Arctic and Pacific).....	30
Section 4: Sailing Directions and Small Craft Guide Corrections	32
Section 5: List of Lights, Buoys and Fog Signals Corrections	33

Numerical Index of Canadian Charts Affected

This numerical index lists all nautical charts mentioned in this monthly edition of Notices to Mariners. Only charts appearing in Section 2 of this publication require a chart correction. The appearance of charts in all other sections, particularly those related to the correction of other nautical publications, is included here for reference.

Chart No.	Pages	Chart No.	Pages	Chart No.	Pages
1234	19	4825	17		
1236	13, 15, 33, 34	4826	26		
1311	34	4850	17		
1314	34	4862	17		
1316	18	4881	27		
2121	19	4913	27, 28		
2122	19	4938	17		
2303	19	4954	28, 29		
2304	20	4967	13		
2305	20	4971	29, 33		
2306	20	5031	17		
4002	13	5163	29		
4021	20	5165	17, 29		
4024	21	5179	17		
4025	21	5510	16		
4026	21	6023	34		
4116	21	8015	29		
4117	21, 22				
4244	22				
4266	17				
4279	22, 23				
4301	23, 33				
4302	23, 24				
4335	24, 25				
4385	18				
4426	25, 33				
4459	25				
4491	25, 33				
4530	17				
4639	17				
4641	17				
4679	17				
4722	25, 26				
4824	17				

Section 1: General and Safety Information

Canadian Coast Guard Publication – Comments and Suggestions on Notices To Mariners (NOTMAR) Publications

In an effort to continuously improve the Notices to Mariners publications and to provide the most efficient service possible, the Notices to Mariners team invites all mariners and other interested parties to submit comments and suggestions on possible improvements to its various publications and services at the following email address: Notmar.XNCR@dfo-mpo.gc.ca.

Transport Canada – COVID-19 Measures, Updates and Guidance

(Recurrent publication of notice *401/20, originally published in the *Notices to Mariners – Monthly Eastern Edition 04/2020* publication.)

Please refer to the link below for the latest updates to transportation related measures taken by Transport Canada in response to the evolving novel Coronavirus disease (COVID-19):
<https://www.tc.gc.ca/en/initiatives/covid-19-measures-updates-guidance-tc.html>.

For travel advice and all other updates, please visit: Canada.ca/coronavirus.

Canadian Hydrographic Service – Canadian Tide and Current Tables – Printing to be Discontinued

(Recurrent publication of notice *904/20, originally published in the *Notices to Mariners – Monthly Eastern Edition 09/2020* publication.)

Due to the availability of the *Canadian Tide and Current Tables* as [viewable and printable PDF files](#) on charts.gc.ca for each complete volume and [additional information in different formats](#) (predictions, observations in tables, and graphics) on tides.gc.ca, the Canadian Hydrographic Service is permanently discontinuing the printing of all volumes of *Canadian Tide and Current Tables* starting January 2021.

Advances in technology bring a new era of marine navigation with a focus on digital and electronic products. The Canadian Hydrographic Service is transforming the way it delivers quality data and services to clients, in a timely manner, to support decision-making.

For more information, visit www.charts.gc.ca.

Canadian Hydrographic Service – Chart 1 – Printing to be Discontinued

(Recurrent publication of notice *905/20, originally published in the *Notices to Mariners – Monthly Eastern Edition 09/2020* publication.)

Due to the availability of *Chart 1: Symbols, Abbreviations and Terms* as both [viewable and printable PDF files](#) and [HTML](#) format on charts.gc.ca, the Canadian Hydrographic Service is permanently discontinuing the printing of *Chart 1: Symbols, Abbreviations and Terms* starting January 2021.

Advances in technology bring a new era of marine navigation with a focus on digital and electronic products. The Canadian Hydrographic Service is transforming the way it delivers quality data and services to clients, in a timely manner, to support decision-making.

For more information, visit www.charts.gc.ca.

Canadian Hydrographic Service – Notices to Mariners for Changes in Buoy Shape

(Recurrent publication of notice *906/20, originally published in the *Notices to Mariners – Monthly Eastern Edition 09/2020* publication.)

As part of the CHS Digital Transformation and for the sake of economy, CHS will no longer systematically issue Notices to Mariners (NTM) for buoy shape changes only. These changes will, however, be applied to electronic navigation charts (ENCs) where applicable. The paper and raster versions will be updated during the New Edition process.

Gulf of St. Lawrence – Protection of the North Atlantic Right Whale

(Recurrent publication of notice *405/21, originally published in the *Notices to Mariners – Monthly Eastern Edition 04/2021* publication.)

Purpose

This notice describes the speed restriction zones that vessels must follow in the Gulf of St. Lawrence.

The Government of Canada has established these zones to reduce the risk of vessel collisions with North Atlantic right whales (NARW).

Context

Due to changing migration patterns of North Atlantic right whales and their increased presence in the Gulf of St. Lawrence, the Government of Canada has established seasonal speed restrictions in specific zones. These speed restrictions zones are defined as “static zones”, “dynamic shipping zones”, “seasonal management areas”, a trial “voluntary speed restriction zone” and a “restricted area”. [See the map below for details.](#)

Note: Navigational Warnings outlining the speed restrictions are considered to be Notices to Shipping, which vessels **must follow**. The *Interim Order for the Protection of North Atlantic Right Whales (Eubalaena Glacialis) in the Gulf of St. Lawrence, 2021* enables the issuance of Navigational Warnings (NAVWARNs) imposing speed restrictions or navigation restrictions.

Speed restriction zones are described in monthly Notices to Mariners (NOTMARs), which are published by the Canadian Coast Guard (CCG). The status of these zones are broadcast through NAVWARNs, which are published by the CCG’s Marine Communications and Traffic Services (MCTS) Centres.

Changes to speed restriction zones and measures

Based on consultations with industry and on scientific data, changes to the speed restriction zones will be effective from April 28, 2021, while the restricted area will be implemented based on whale presence:

- For a second consecutive year, a trial voluntary slowdown of 10.0 knots over the ground spanning from Cabot Strait (a line running from Cape North NS to Cape Ray NL) to the eastern edge of dynamic shipping zone E will be implemented at the beginning and end of the North Atlantic right whale season.
- Again this year, a restricted area located in and near Shediac Valley. The location and size are both based on historical data of North Atlantic right whale aggregations, while the triggering mechanism is based on in-season detections.
- As of this year, the 36.57 m (20-fathom) shallow water protocol will apply to all commercial fishing vessels.

Please refer to the latest NAVWARN issued by the CCG-MCTS for all speed restrictions currently in effect.

Speed Restriction Measures for 2021

These restrictions will be in effect from **April 28 to November 15, 2021**.

Exemption

The following exemption will apply to all measures:

- A vessel in distress or providing assistance to a person or a vessel in distress.

Static zones

In the static zones, **all** vessels above **13 m** in length overall (LOA) must proceed at a speed of not more than 10.0 knots over the ground.

Exceptions

Air cushion vessels operated by or on behalf of the Government of Canada that are engaged in ice-clearing activities from April to June in and around Chaleur Bay are exempted when in operation.

36.57 m (20-fathom) shallow water protocol

Vessels engaged in any commercial fishing activity may proceed at a safe operational speed in waters not more than 36.57 m (20 fathom) deep.

If a notice to fish harvesters states that at least one right whale has been detected within a static zone in waters that are not more than 36.57 m deep, the 10 knots speed limit will apply to all vessels above 13 m in length overall (LOA) 15 days after the day on which the notice comes into effect.

If a new notice to fish harvesters with the same statement is published or broadcast during the last seven days of the 15-day period, the speed limit will continue to apply for a further 15 days after the day on which the new notice comes into effect.

Coordinates for the northern static zone:

- 50° 20' N 065° 00' W
- 49° 13' N 065° 00' W
- 48° 40' N 064° 13' W
- 48° 40' N 062° 40' W
- 48° 03' N 061° 07.5' W
- 47° 58.1' N 061° 03.5' W
- 48° 00' N 061° 00' W
- 49° 04' N 061° 00' W
- 49° 04' N 062° 00' W
- 49° 43' N 063° 00' W
- 50° 20' N 063° 00' W

Coordinates for the southern static zone:

- 48° 40' N 065° 00' W
- 48° 40' N 062° 40' W
- 48° 03' N 061° 07,5' W
- 47° 58.1' N 061° 03,5' W
- 47° 10' N 062° 30' W
- 47° 10' N 065° 00' W

Dynamic shipping zones

There are five dynamic shipping zones (DSZ) located in the routing systems north and south of Anticosti Island: A, B, C, D and E

Coordinates for the dynamic shipping zones:

Zone A

- 49° 41' N, 065° 00' W
- 49° 20' N, 065° 00' W
- 49° 11' N, 064° 00' W
- 49° 22' N, 064° 00' W

Zone B

- 49° 22' N, 064° 00' W
- 49° 11' N, 064° 00' W
- 48° 48' N, 063° 00' W
- 49° 00' N, 063° 00' W

Zone C

- 49° 00' N, 063° 00' W
- 48° 48' N, 063° 00' W
- 48° 24' N, 062° 00' W
- 48° 35' N, 062° 00' W

Zone D

- 50° 16' N, 064° 00' W
- 50° 00' N, 064° 00' W
- 49° 56' N, 063° 00' W
- 50° 16' N, 063° 00' W

Zone E

- 48° 35' N 062° 00' W
- 48° 24' N 062° 00' W
- 48° 03' N 061° 07.5' W
- 47° 58.1' N 061° 03.5' W
- 48° 00' N 061° 00' W
- 48° 10.5' N 061° 00' W

When the Government of Canada detects a North Atlantic right whale in a dynamic shipping zone:

- All vessels will be notified via a NAVWARN; and
- Vessels above 13 m in length overall (LOA) must proceed at a speed of not more than 10.0 knots over the ground within that zone.

Speed restrictions in the dynamic shipping zones

The detection of North Atlantic right whales in one or more dynamic shipping zone(s), will trigger a speed restriction in the concerned zone(s). The speed restriction in the dynamic shipping zone(s) will be in effect for 15 days from the date of issuance of the NAVWARN. The speed restriction may be extended for an additional 15 days from the date that a new NAVWARN comes into effect, if North Atlantic right whales continue to be detected during the last 7 days of the 15-day slowdown period.

When a NAVWARN is issued implementing a speed restriction in one or more dynamic shipping zone(s), vessels above **13 m** in length (LOA) must not exceed a speed of 10.0 knots over the ground.

Within any zone that is not subject to a speed restriction, mariners may proceed at a safe operational speed. Mariners are encouraged to take into consideration the potential for their vessel striking North Atlantic right whales when considering a “safe operational speed” during navigation.

Seasonal management areas

Seasonal management area 1 (SMA-1) and seasonal management area 2 (SMA-2) are speed restriction areas located north and south of dynamic shipping zone E, respectively.

Within seasonal management areas, vessels above **13 m** in length (LOA):

- must restrict their speed so as not to exceed 10.0 knots over the ground from April 28 to June 29, 2021; and
- are allowed to proceed at a safe operational speed from June 30 to November 15, 2021, unless a North Atlantic right whale is detected. If a whale is detected, a speed restriction of 10.0 knots over the ground will be triggered for 15 days from the date of issuance of the NAVWARN. The speed restriction may be extended for an additional 15 days from the date that a new NAVWARN comes into effect, if North Atlantic right whales continue to be detected during the last 7 days of the 15-day slowdown period.

Coordinates for the SMA-1:

- 49° 04' N 062° 00' W
- 49° 04' N 061° 00' W
- 48° 10.5' N 061° 00' W
- 48° 35' N 062° 00' W

Coordinates for the SMA-2:

- 48° 24' N 062° 00' W
- 48° 03' N 061° 07.5' W
- 47° 58.1' N 061° 03.5' W
- 47° 26.69' N 062° 00' W

Restricted area

In the summer months, an important proportion of the total North Atlantic right whale population gathers for feeding and surface activity near the [Shediac Valley](#). Since this makes the North Atlantic right whale more susceptible to vessel collisions, a mandatory restricted area will be implemented in and near the [Shediac Valley](#) and will come into force once 80% of the restricted area is closed to fishing for the season as per [the Department of Fisheries and Oceans's right whale closure protocol](#). The restricted area will be lifted once the North Atlantic right whale detections decrease in the restricted area or at the latest on August 31, 2021.

The size and location of the area is determined based on historical detection data of North Atlantic right whales. All necessary details can be found in the Interim Order. Triggering and lifting of the restricted area will be communicated to mariners through a NAVWARN and notice to fish harvesters.

Vessels above **13 m** in length (LOA) will be required to:

- avoid the area unless they are part of the exceptions listed in the Interim Order;
- transit the area at a speed not exceeding 8.0 knots over the ground if they are included in the exception list.

The following exceptions will apply to the restricted area. Vessels listed can travel through the area at not more than 8.0 knots over the ground:

- A vessel being used for commercial fishing;
- A vessel being used for fishing under the authority of a licence issued under the Aboriginal Communal Fishing Licences Regulations;
- A vessel being used for research purposes on behalf of the Government of Canada
- A vessel being used as part of the Department of Fisheries and Oceans' Marine Mammal Response Program to assist a marine mammal or sea turtle in distress or to access or retrieve a deceased marine mammal or sea turtle;
- A vessel authorized by the Government of Canada to retrieve or identify the location of abandoned or lost fishing gear;
- A vessel involved in pollution response operations;
- A vessel avoiding immediate or unforeseen danger;
- A vessel being used to conduct geophysical or geotechnical surveys or related activities as part of a project, which the Minister of Fisheries and Oceans has reviewed, to lay electrical or communication cables;
- A vessel involved in research relating to right whales as part of a project that has received funding from the Government of Canada.

The following vessels can travel through the restricted area at a speed over 8.0 knots, but below 10.0 knots over the ground as required by the static speed restriction zone:

- A vessel being used by an employee of the Government of Canada or peace officer who is performing their duties.

The location and size of the restricted area will not be modified during the season.

Coordinates for the restricted area:

- 48°31.8' N 063°39.6' W
- 48°24.72' N 063°17.88' W
- 47°18.84' N 064°10.8' W
- 47°27.18' N 064°30.72' W

Inclement weather exception

Mariners will be notified in advance via a NAVWARN should the speed restriction status change in any zone or area, due to inclement weather.

Within any zone or area that is not subject to a speed restriction due to adverse weather conditions for example, mariners may proceed at a safe operational speed. Mariners are however encouraged to take into consideration the potential for their vessel striking North Atlantic right whales when considering a “safe operational speed” during navigation.

*Non-expected vessels are still prohibited from transiting through the restricted area.

Trial voluntary slowdown in Cabot Strait

To coincide with the North Atlantic right whales entering and exiting the Gulf of St. Lawrence in large numbers, a trial voluntary slowdown is being put in place for the second year in Cabot Strait from April 28 to June 29, 2021, and from September 29 to November 15, 2021.

- During these periods, vessels above 13 m in length (LOA) are requested to voluntarily reduce their speed so as to not exceed 10.0 knots over the ground.

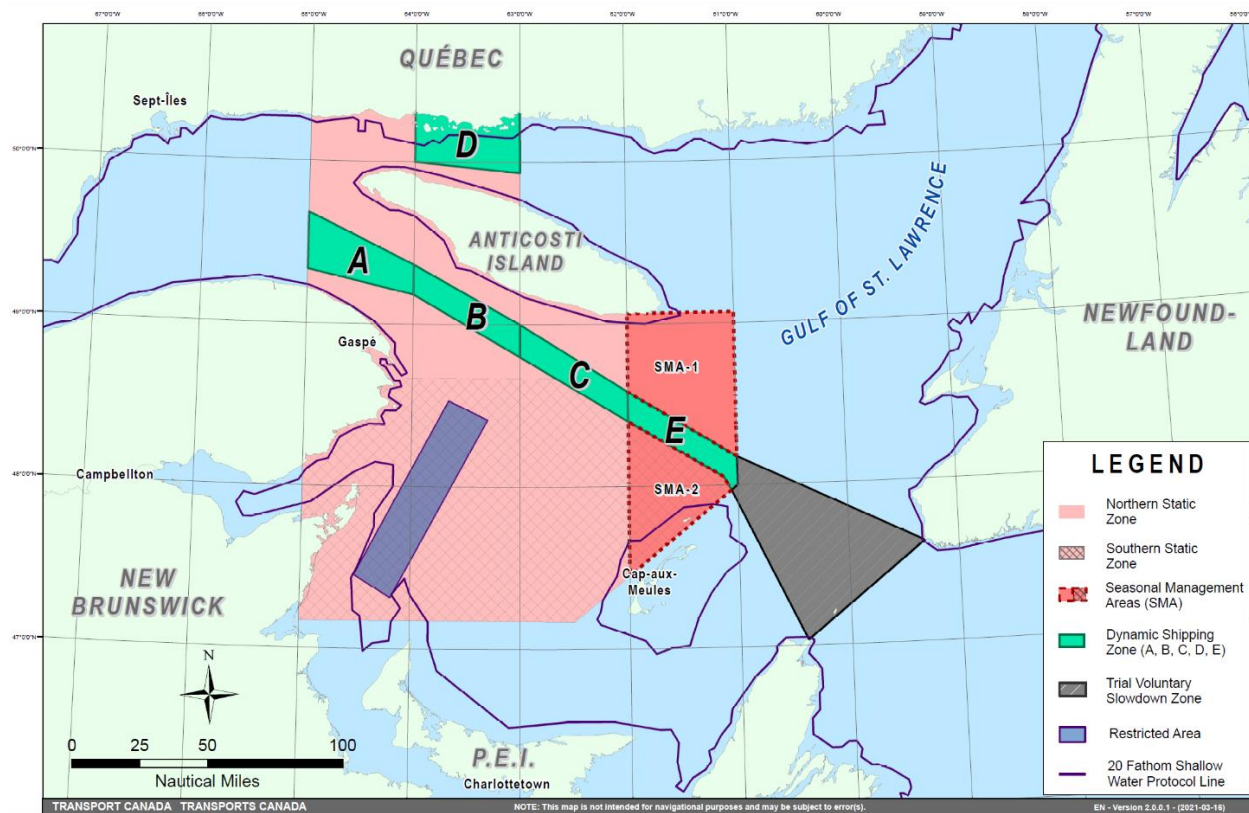
Voluntary slowdown zone coordinates:

- 48° 10.5' N 061° 00' W
- 47° 37.2' N 059° 18.5' W
- 47° 02' N 060° 23.7' W
- 47° 58.1' N 061° 03.5' W
- 48° 00' N 061° 00' W

Map of the Gulf of St. Lawrence

The following map shows

- the static zones, in pink;
- the dynamic shipping zones, in green;
- the seasonal management areas, in dark pink;
- the trial voluntary slowdown zone, in grey;
- the restricted area, in dark blue; and
- the 36.57 m (20 fathom) shallow water protocol line.



Map showing the two static zones (north and south), the five dynamic shipping zones (A, B, C, D and E), the seasonal management areas, the restricted area, the trial voluntary slowdown zone and the 36.57 m (20 fathom) shallow water protocol line.

This map is for visual representation only and is not to be used for navigation or enforcement.

NAVWARN broadcasts

The CCG-MCTS issues and publishes NAVWARNs:

- by radio broadcast; and
- online at [Canada's Maritime Information Portal](#) and its [Navigational Warnings](#) site.

Mariners must ensure they have accurate and up-to-date information about the protection of the North Atlantic right whale, as in all applicable NOTMARs and NAVWARNs.

For the North Atlantic right whale speed restrictions, the NAVWARN(s) currently in effect will be provided to vessels subject to the *Vessel Traffic Services Zone Regulations* or the *Eastern Canada Vessel Traffic Services Zone Regulations*:

Outbound vessels

- at Calling-in-Point 10 (St-Laurent); or
- upon a departure downstream from the Quebec pilot station (including the Saguenay River, Chaleur Bay, Miramichi Bay, etc.)

Inbound vessels

- when a clearance to enter Canadian waters is granted

Vessels in transit

- at the last reporting point prior to entering the mandatory speed restriction zones; and/or
- at 10 nautical miles prior to entering the mandatory speed restriction zones

For those vessels not subject to the above-mentioned regulations, vessel operators are required to monitor broadcasts by the Canadian Coast Guard's Marine Communications and Traffic Services (MCTS) network for the most up to date information. For marine radio frequencies and broadcast times, information may be found in the [Radio Aids to Marine Navigation](#) publication.

Aids to navigation

The Canadian Coast Guard is currently testing virtual Automatic Identification System (AIS) aids to navigation (AIS AtoN) in specific areas, NOTMAR 208(T)/2021 refers. These aids notify mariners of a dynamic shipping zone and/or a seasonal management area subject to a speed restriction.

Each zone is delimited by four to six virtual AIS AtoN, which can be displayed on a ship's navigation equipment, such as

- Electronic Chart Display and Information System (ECDIS);
- Electronic Chart System (ECS);
- RADAR;
- Minimum Keyboard Display (MKD); and
- Electronic Nautical Chart (ENC).

The Canadian Coast Guard broadcasts the virtual AIS AtoN only when a speed restriction is in effect in one or more testing zones.

Mariners must select the virtual AIS AtoN symbol to view a message such as "SectA1 Spd Lim 10 kt." This message refers to a speed restriction in effect for a specific zone.

Note: This system is not the primary method of communicating this information.

Compliance and enforcement

Vessels must comply with the Interim Orders made pursuant to the *Canada Shipping Act, 2001*, and any NAVWARNs broadcast and published by the Canadian Coast Guard relating to the Interim Orders, aimed at regulating the navigation for the purposes of protecting the North Atlantic right whales.

If a vessel does not comply with the Interim Orders or instructions in the NAVWARNs related to the Interim Orders, the vessel could face:

- administrative monetary penalties up to a maximum of CAN \$250,000; and/or
- penal sanctions under the *Canada Shipping Act, 2001*.

If a vessel appears to have violated the speed restriction, Transport Canada Marine Safety inspectors will review all information provided through AIS and seek an explanation from the master.

No exemptions to the speed restriction will be granted in advance. However, if a deviation from the speed restrictions is necessary for safety reasons, the following information must be entered into the bridge logbook:

- Reason(s) for deviation
- Speed at which vessel is operated
- Latitude and longitude at time of deviation
- Time and duration of deviation
- Master of the vessel shall sign and date the bridge logbook entry

For any deviation, Transport Canada will review and consider reasons such as

- Navigating to ensure vessel safety;
- Weather conditions;
- Force majeure (unforeseeable circumstances); and
- Responding to emergencies.

Report a North Atlantic right whale sighting

When there is a North Atlantic right whale that is entangled, injured or dead, please report it to the nearest Canadian Coast Guard Marine Communications and Traffic Services Centre, or as follows:

Southern part of the Gulf of St. Lawrence

Marine Animal Response Society
Telephone: 1-866-567-6277

Newfoundland and Labrador

Whale Release and Strandings
Telephone: 1-888-895-3003

For the Québec Sector

Marine Mammal Emergencies
Telephone: 1-877-722-5346

If live, free-swimming whales are sighted

- Call 1-902-440-8611 (local) or 1-844-800-8568 (toll free)
- Email: XMARWhalesightings@dfc-mpo.gc.ca

Please consult WhaleMap for the latest right whale observations: <https://whalemap.ocean.dal.ca/>

Saguenay–St. Lawrence Marine Park - Beluga Whale Protection: Slowdown Area at the Mouth of the Saguenay Fjord and Area Closure at Baie Sainte-Marguerite

(Recurrent publication of notice *406/21, originally published in the *Notices to Mariners – Monthly Eastern Edition 04/2021* publication.)

The Saguenay–St. Lawrence Marine Park and its surrounding area are at the heart of endangered beluga whale critical summer habitat. Marine mammal protection measures have been put in place in accordance with the *Marine Activities in the Saguenay–St. Lawrence Marine Park Regulations* within the limits of the Marine Park.

However, important feeding, calving and rearing areas for beluga whales require greater protection to ensure the recovery of the species. The portion of the Saguenay situated between the mouth of the Fjord and Baie Sainte-Marguerite is one of the areas most used by females and their young from May to October. The mouth of the Saguenay is known as a feeding ground and Baie Sainte-Marguerite as a calving and rearing area.

In order to prevent collisions with beluga whales, a compulsory 15-knot slowdown area is in effect from May 1st to October 31st at the mouth of the Saguenay. To ensure tranquility for female belugas and their young during the critical calving period, access to Baie Sainte-Marguerite is prohibited to all vessels from June 21st to September 21st, except for special authorizations (see description below).

For safety reasons, *the slowdown area measure at the mouth of the Saguenay Fjord does not apply* to cargo ships (see the monthly edition of *Notices to Mariners* from May to October for voluntary protection measures in the St. Lawrence Estuary). An enhanced vigilance is, however, recommended to all navigators between the mouth of the Saguenay Fjord and Baie Sainte-Marguerite for the protection of beluga whales.

For more information on the Saguenay–St. Lawrence Marine Park, see notice 5C of the *Notices to Mariners Annual Edition 2021* or visit marinepark.qc.ca.

REGULATORY PROTECTION MEASURES — BELUGA WHALE

Entire Marine Park Territory:

- When beluga whales are less than half a nautical mile (926 metres) from a motorized vessel, the vessel must maintain a speed of between 5 and 10 knots.
- All vessels, including human-powered vessels (kayaks and canoes), must continue to move forward and maintain their heading.
- All vessels must maintain a minimum distance of 400 metres from beluga whales at all times.

For more information concerning the regulations, consult: marinepark.ca/protect/#regulations.

Mouth of the Saguenay Fjord (Figure 1) — Slowdown Area (area crosshatched in red):

- Maximum speed at the mouth of the Saguenay between buoys S7 and S8 and the ferry docks between Baie-Sainte-Catherine and Tadoussac is 15 knots from May 1st to October 31st.

Baie Sainte-Marguerite (Figure 2) — Area Closure (red area):

- From June 21st to September 21st, vessels must not enter the red area, which follows a line between Cap Nord-Ouest and Cap Sainte-Marguerite.
- Special authorizations are granted only for kayaks, canoes and recreational fishermen who must travel without stopping along a corridor within 10 metres of the shore or in shallow areas.

VOLUNTARY PROTECTION MEASURES

Baie Sainte-Marguerite sector (Figure 2) — Transit Area (area crosshatched in yellow):

- From June 21st to September 21st, navigation in this area is recommended at a speed of between 5 and 10 knots without stopping.

The purpose of this transit area is to favour respect of the *Marine Activities in the Saguenay–St. Lawrence Marine Park Regulations*, since beluga whales are often present in the Baie Sainte-Marguerite sector.

INFORMATION

All incidents, including collisions with whales, must be reported without delay by dialling 1-866-508-9888. For any other situation concerning a marine mammal that is either dead or in trouble, contact the emergency network at 1-877-722-5346, or use VHF channel 16.

Figure 1

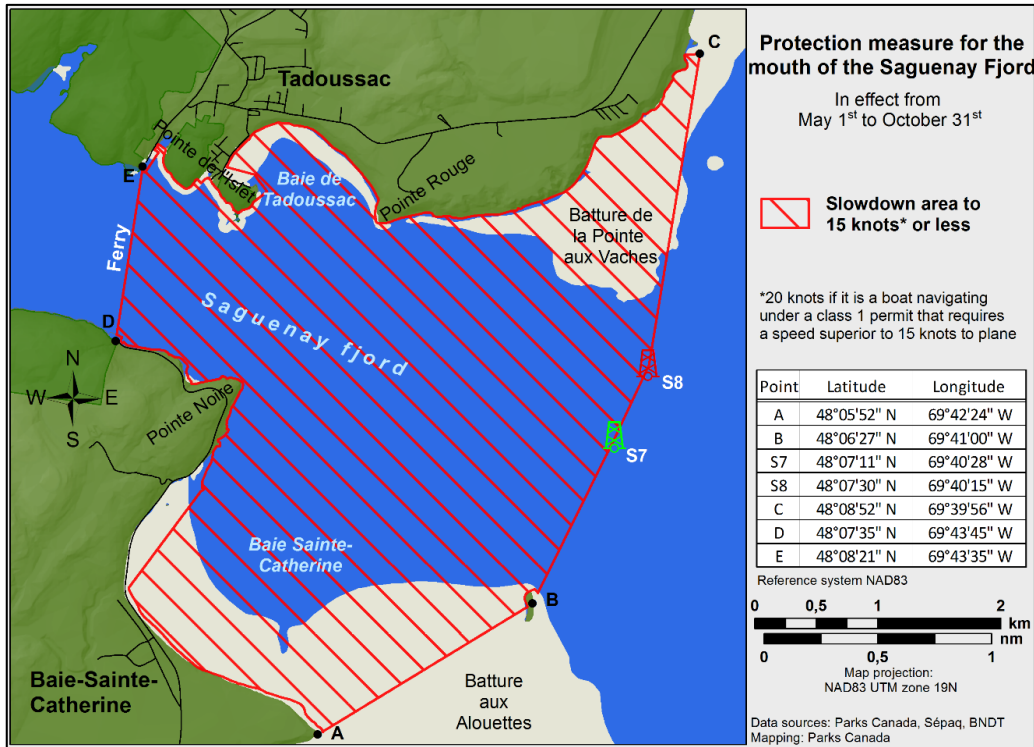
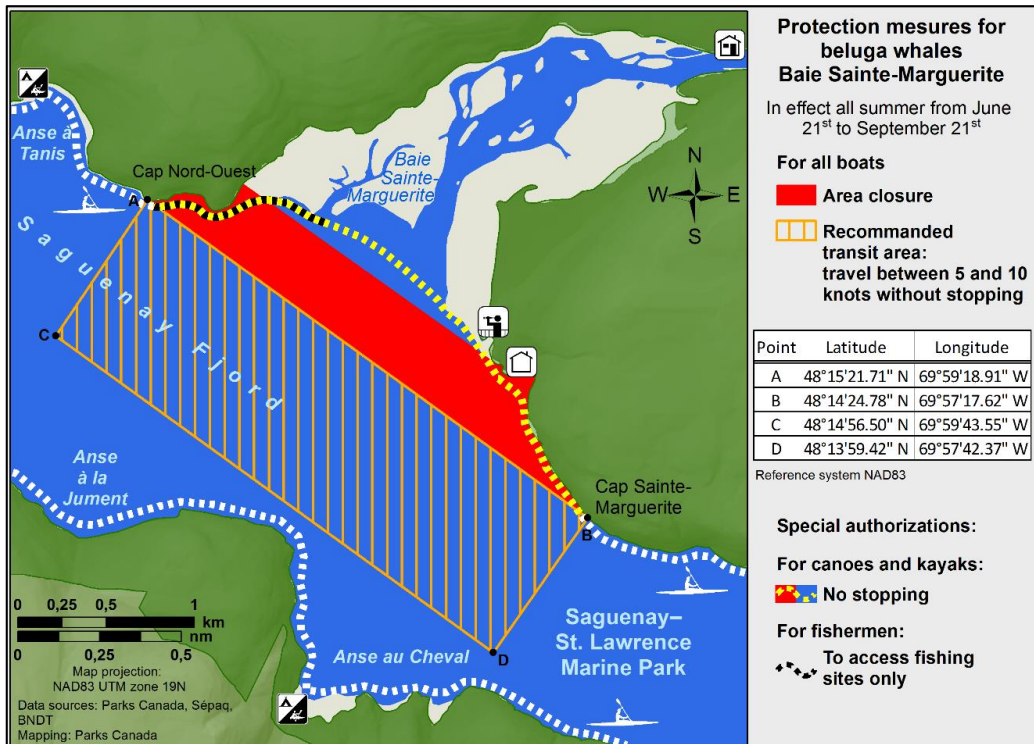


Figure 2



Saguenay-St. Lawrence Marine Park and Surrounding Waters – Whale Protection

(Recurrent publication of notice *407/21, originally published in the *Notices to Mariners – Monthly Eastern Edition 04/2021* publication.)

The waters in and around the Saguenay–St. Lawrence Marine Park are well known for the resident endangered beluga population and the wide diversity of whales that migrate there to feed, particularly between April and November.

REGULATORY PROTECTION MEASURES

All whale species that are found in the St. Lawrence are protected under the *Marine Mammal Regulations*, pursuant to the *Fisheries Act*. Within the boundaries of the Marine Park, specific measures are set out in the *Marine Activities in the Saguenay–St. Lawrence Marine Park Regulations*, pursuant to the establishment of the *Saguenay–St. Lawrence Marine Park Act*. Any collision with a marine mammal within the Marine Park must immediately be reported to a park warden at 1-866-508-9888. For collisions that occur outside the Marine Park or for any situation involving a marine mammal that is dead or in trouble, contact the emergency network at 1-877-722-5346 or on VHF channel 16.

For more information on the Saguenay–St. Lawrence Marine Park, see notice 5C of the *Notices to Mariners Annual Edition 2021*.

VOLUNTARY PROTECTION MEASURES

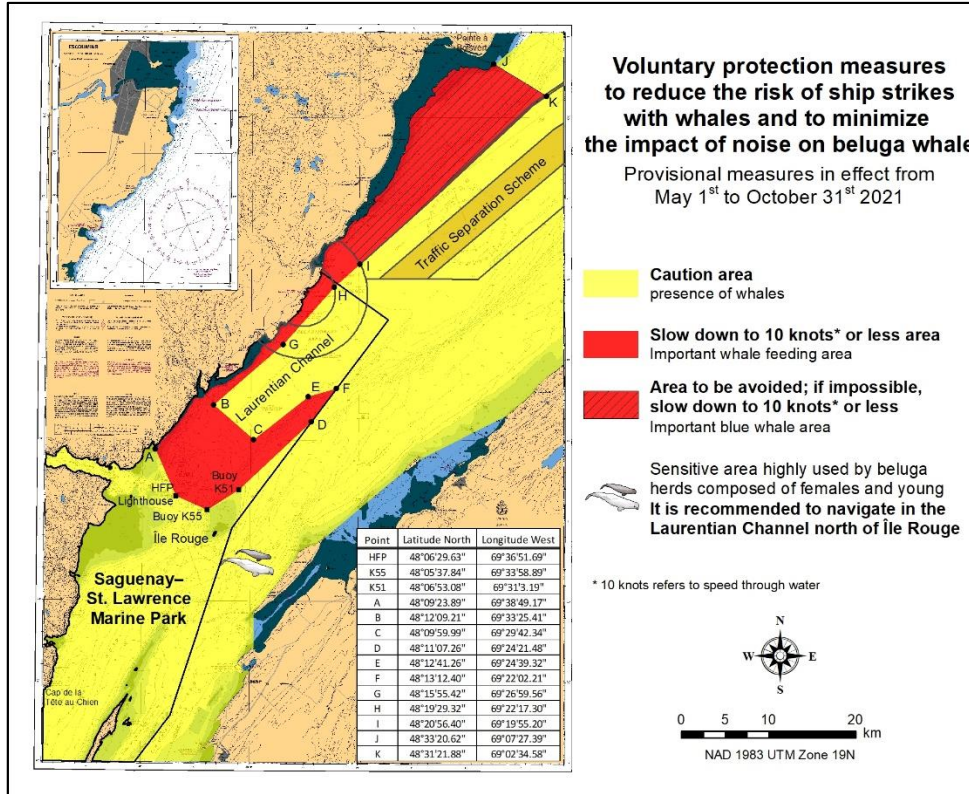
Provisional measures in effect from May 1 to October 31, 2021. See map at the end of this notice.

These measures apply to merchant vessels and cruise ships between Pointe à Boisvert and Cap de la Tête au Chien to prevent collisions with whales. These measures should only be taken when they will not jeopardize navigational safety.

Caution area (yellow area): To reduce the risk of collisions with whales that can be present anywhere in this area, heightened vigilance of navigators is critical. Posting a lookout is recommended in order to increase the chances of seeing the whales and thus taking necessary measures to avoid them. If bypassing the whales is not possible, slow down and wait for the animals to move away to a distance greater than 400 metres (0.215 nautical miles) before resuming original speed. It is more difficult to see the animals at night therefore increased caution is recommended.

Slow down to 10 knots or less area (red area): To reduce the risk of collisions with whales in this feeding area, it is recommended that vessels slow down to a maximum speed through the water of 10 knots and post a lookout. It is further recommended to remain in the Laurentian Channel to the north of Île Rouge to minimize the impact of noise in a sensitive area south of this island, which is highly frequented by herds of beluga whales composed of females and young.

Area to be avoided (hatched red area): To reduce noise and the risk of collisions with whales, vessels should avoid transiting through this area which is highly frequented by blue whales, an endangered species. If the area cannot be avoided, slow down to a speed through the water of 10 knots or less.



***501/21 Canadian Hydrographic Service – Nautical Charts**

Charts	Main Title	Scale	Published	Cat#	Price
New Charts					
4967	La Tabatière à Île du Petit Mécatina	1:50 000	2021-04-30	1	\$20.00
Charts Permanently Withdrawn					
4002	Golfe du Saint-Laurent / Gulf of St. Lawrence				

***502/21 Canadian Hydrographic Service – Electronic Navigational Charts**

S-57 ENC Number	Chart Title	ENC Compilation Scale	Published
New Charts			
CA571040 (Edn 1.000)	Skidegate Channel (Part 1 of 2)	1:12 000	2021-05-21
CA571041 (Edn 1.000)	Skidegate Channel (Part 2 of 2)	1:12 000	2021-05-21
CA576645 (Edn 1.000)	Triton Marina Service Centre	1:2 500	2021-04-16
CA576728 (Edn 1.000)	Tignish Harbour	1:3 000	2021-04-16
CA576816 (Edn 1.000)	Cow Head	1:2 500	2021-04-30
CA576847 (Edn 1.000)	Charlottetown	1:2 500	2021-05-14
CA576905 (Edn 1.000)	Neil's Harbour	1:2 500	2021-05-21
CA676476 (Edn 1.000)	Makkovik	1:2 000	2021-05-21
CA676585 (Edn 1.000)	Mispec Point Canaport Terminal	1:500	2021-05-14
CA676838 (Edn 1.000)	Mulgrave Marine Terminal, NS	1:500	2021-05-21

S-57 ENC Number	Chart Title	ENC Compilation Scale	Published
CA676841 (Edn 1.000)	Peebles Point, NS	1:1 000	2021-05-21
CA676848 (Edn 1.000)	Pleasant Cove	1:2 000	2021-05-21
New Editions			
CA279044 (Edn 14.000)	Havre Saint-Pierre et/and Cap des Rosiers à/to Pointe des Monts	1:150 000	2021-05-28
CA373331 (Edn 5.000)	Approaches to/Approches à Cambridge Bay	1:40 000	2021-05-21
CA373337 (Edn 6.000)	Johansen Bay and/et Edinburgh Channel	1:37 500	2021-05-14
CA373500 (Edn 3.000)	Approches à/Approches to Rivière George	1:30 000	2021-05-21
CA379026 (Edn 9.000)	Archipel de Mingan	1:35 000	2021-05-21
CA379029 (Edn 8.000)	Cap de la Tête au Chien à/to Cap aux Oies	1:40 000	2021-05-14
CA379086 (Edn 9.000)	Cap des Rosiers à/to Chandler	1:37 500	2021-05-21
CA379093 (Edn 2.000)	Pointe Curlew à/to Baie Washtawouka	1:35 000	2021-05-21
CA379131 (Edn 4.000)	Baie Piashti à/to Île au Marteau	1:35 000	2021-05-21
CA379139 (Edn 3.000)	Île à la Brume à/to Pointe Curlew	1:35 000	2021-05-21
CA379140 (Edn 4.000)	Baie Washtawouka à/to Baie Piashti	1:34 975	2021-05-21
CA379149 (Edn 6.000)	Baie Naticotec - Île d'Anticosti	1:36 000	2021-05-21
CA379151 (Edn 8.000)	Pointe de l'Est - Île d'Anticosti	1:36 000	2021-05-21
CA379164 (Edn 3.000)	Îles Sainte-Marie à/to Île à la Brume	1:37 500	2021-05-21
CA379182 (Edn 2.000)	Lac Saint-Jean	1:60 000	2021-05-14
CA379216 (Edn 8.000)	Iles de la Madeleine	1:75 000	2021-05-28
CA379232 (Edn 2.000)	Île du Bic au/to Cap de la Tête au Chien	1:40 000	2021-05-14
CA473332 (Edn 5.000)	Cambridge Bay	1:15 000	2021-05-21
CA476071 (Edn 5.000)	Witless Bay	1:12 500	2021-05-07
CA476073 (Edn 5.000)	Fermeuse Harbour	1:12 500	2021-05-07
CA476074 (Edn 4.000)	Aquaforte Harbour	1:15 000	2021-05-07
CA479014 (Edn 16.000)	Batiscan au/to Lac Saint-Pierre	1:20 000	2021-05-28
CA479053 (Edn 6.000)	Tadoussac à/to Cap Éternité	1:18 750	2021-05-14
CA573409 (Edn 2.000)	Trenton	1:9 000	2021-05-28
CA579015 (Edn 15.000)	Port de Trois-Rivières	1:7 500	2021-05-28
Charts Permanently Withdrawn			
CA179245	Golfe du Saint-Laurent / Gulf of St. Lawrence	Cancelled by CA279037, CA279075, CA276286, CA376187, CA279043, CA279044, CA276204, CA276090	
CA479027	Havre de Mingan	Cancelled by CA379026	
CA479136	Baie Washicoutai	Cancelled by CA379139	
CA479138	Baie de Kégaska	Cancelled by CA379093	
CA479226	La Passe	Cancelled by CA379216	
CA570205	East Narrows and/et West Narrows	Cancelled by CA571040, CA571041	

***503/21 Canadian Hydrographic Service – Raster Digital Charts (BSB V3)**

Charts	Main Title	Scale	Published
Charts Permanently Withdrawn			
RM-4002	Golfe du Saint-Laurent / Gulf of St. Lawrence		

***504/21 Canadian Hydrographic Service – Publications to be Discontinued**

The Canadian Hydrographic Service (CHS) is immediately discontinuing the following paper and digital publications :

English versions

- P142 Small Craft Guide – Lake Nipissing, 1987
- P250 Tides in Canadian Waters
- P252 Canadian Tidal Manual
- P875E Marine Environmental Handbook Arctic Northwest Passage

French versions

- P143 Guide nautique – Lac Nipissing, 1987
- P251 Les marées dans les eaux du Canada
- P253 Manuel canadien des marées
- P875F Manuel sur le milieu marin dans l'Arctique Passage du Nord-Ouest

***505/21 Environment and Climate Change Canada – Iridium SafetyCast Service**

The International Maritime Organization (IMO) and the International Hydrographic Organization (IHO) announced the establishment of the Iridium SafetyCast Service as a recognized mobile satellite service in the Global Maritime Distress and Safety System (GMDSS).

Effective June 1st 2021 an Iridium SafetyCast Service for broadcasting of meteorological warnings, meteorological forecasts and ice information in the English language will be declared to be “On Trial” for Canada’s Arctic METAREAs XVII and XVIII and the Hudson Bay area of METAREA IV.

During the Iridium SafetyCast “On Trial” phase, meteorological warnings, meteorological forecasts and ice information will be broadcast in accordance with the Revised Joint IMO/IHO/WMO Maritime Safety Information Manual on an intermittent and test basis. The “On Trial” phase is a test and evaluation stage which is necessary to ensure meteorological warnings, meteorological forecasts and ice information are processed and promulgated in a timely and appropriate manner.

METAREAs XVII and XVIII will broadcast Iridium SafetyCast messages to vessels with an approved SafetyCast receiver. On vessels with Iridium GMDSS terminals installed, mariners are advised to check their manufacturer’s operation manuals to obtain information on the setting of their SafetyCast receivers to receive relevant SafetyCast messages.

During this period, Environment and Climate Change Canada will not guarantee service availability.

Determination when METAREA XVII and XVIII is ready to declare “Operational” status will come at a later date and will be announced through a subsequent Notice to Mariners.

***507/21 Puvirnituk et les approches / and Approches – Radar Beacon Permanently Established**

Reference Chart: 5510

A radar beacon (RACON) has been permanently established on the following unlit aid to navigation:

Aid Name	LL #	Position	Racon Characteristic
Povungnituk No. 2	6447.24	60° 01' 14.6"N 077° 20' 22.7"W	X & S Bands: Mo P (-.-)

(Q2021-027)

Section 1A: Temporary and Preliminary Notices

Reminder – Comment Period for Active Preliminary Notices

This is a reminder that the comment period is still open for the following active Preliminary notices:

Notice #	Reference Chart #	Aids Affected (LL #)	Intent of Notice
Newfoundland and Labrador Coast			
308(P)/21	4530	372.6, 372.61 390,131	Notice of Proposed Changes
309(P)/21	4639	149.7	Light Buoy to be Discontinued
310(P)/21	4641	170.5	Light Buoy to be Discontinued
311(P)/21	4679	211.7	Notice of Proposed Changes
312(P)/21	4824	145.88	Light Buoy to be Discontinued
313(P)/21	4825	143, 143.5, 143.71 143.74	Notice of Proposed Changes
314(P)/21	4862	388.1	Light Buoy to be Discontinued
315(P)/21	5031	278.1	Light Buoy to be Established
316(P)/21	5165	297.4	Light Buoy to be Discontinued
317(P)/21	5179	270.4, 270.45, 271, 272, 272.7	Notice of Proposed Changes
409(P)/21	4850	470.51, 470.53, 470.54, 470.71, 470.72, 470.73, 470.74, 470.75 470.76	Notice of Proposed Changes
410(P)/21	5031	276.3, 276.55	Light Buoys to be Established
Atlantic Coast			
319(P)/21	4266	779, 779.4, 785.5, 786, 787, 789, 5777.02, 5777.04, 5777.05, 5787.21	Notice of Proposed Changes
320(P)/21	4938	900.5, 901, 901.1 901.6, 905, 905.2 905.3, 905.55, 5905.45, 5910.6	Notice of Proposed Changes
412(P)/21	4938	5905.5	Unlit Buoy to be Discontinued

Please refer to the [Notices to Mariners - Monthly Summary of Temporary and Preliminary Notices](#) publication for details.

Newfoundland and Labrador Coast

No notices applicable for this edition.

Atlantic Coast

Temporary Notices

*508(T)/21 Port de Québec – Wharf Construction

Reference chart: 1316

Wharf construction is taking place at wharves 93 and 94, Monday to Friday from 1200 UTC until 2300 UTC.
(NW-Q-1975-21)

Preliminary Notices

Atlantic Region

Comment Submission

Comments on proposed changes in preliminary (P) notices are solicited from mariners and other interested parties within three months of the initial publication date. Following this date, the notices will be cancelled. Any objections raised must state the facts on which they are based and should include supporting information on safety, commerce and public benefit.

Comments should be directed to the following:

Superintendent,
Aids to Navigation & Waterways
Canadian Coast Guard, Atlantic Region
P.O. Box 1236
Charlottetown, PE C1A 7M8
Telephone: (902) 566-7936
Email: claire.maclaren@dfo-mpo.gc.ca

*509(P)/21 Chebucto Head to / à Betty Island – Fog Signal to be Discontinued

Reference chart: 4385

The Canadian Coast Guard proposes to permanently discontinue the fog signal on the following aid to navigation:

Aid Name	LL #	Position
Chebucto Head	513	44° 30' 26.6"N 063° 31' 21.8"W

The light and structure to remain.

Initial publication date: Friday, May 28, 2021

[Comment submission deadline](#): Thursday, August 26, 2021

(F2021-035)

Inland Waters

No notices applicable for this edition.

Section 2: Chart Corrections

1234 - Port de Pointe-au-Pic - New Edition - 04-NOV-2011 - NAD 1983

14-MAY-2021

LNMD. 23-APR-2021

Delete	depth of 7 metres 8 decimetres (See Chart No. 1, I10) This notice affects Electronic Navigational Chart: CA579032	47°37'19.0"N 070°08'25.4"W <i>DFO(6410600-01)</i>
Add	depth of 8 metres 4 decimetres (See Chart No. 1, I10) This notice affects Electronic Navigational Chart: CA579032	47°37'19.1"N 070°08'25.4"W <i>DFO(6410600-02)</i>
Delete	depth of 7 metres 7 decimetres (See Chart No. 1, I10) This notice affects Electronic Navigational Chart: CA579032	47°37'18.1"N 070°08'26.7"W <i>DFO(6410600-03)</i>
Add	depth of 8 metres 0 decimetres (See Chart No. 1, I10) This notice affects Electronic Navigational Chart: CA579032	47°37'18.2"N 070°08'26.8"W <i>DFO(6410600-04)</i>
Delete	depth of 6 metres 3 decimetres (See Chart No. 1, I10) This notice affects Electronic Navigational Chart: CA579032	47°37'23.4"N 070°08'12.6"W <i>DFO(6410600-05)</i>
Add	depth of 5 metres 0 decimetres (See Chart No. 1, I10) This notice affects Electronic Navigational Chart: CA579032	47°37'23.6"N 070°08'12.3"W <i>DFO(6410600-06)</i>

2121 - Long Point to/à Port Glasgow - New Chart - 18-DEC-1987 - NAD 1927

21-MAY-2021

LNMD. 15-FEB-2013

Delete	yellow cautionary spar buoy, marked Priv (See Chart No. 1, Qm) This notice affects Electronic Navigational Chart: CA373088	42°14'53.9"N 081°39'54.9"W <i>(B2021010) DFO(6604746-01)</i>
--------	--	---

2122 - Pointe aux Pins to/à Point Pelee - New Edition - 10-AUG-2007 - NAD 1983

21-MAY-2021

LNMD. 01-JAN-2010

Delete	yellow cautionary spar buoy, marked Priv (See Chart No. 1, Qm) This notice affects Electronic Navigational Chart: CA373088	42°14'54.0"N 081°39'53.9"W <i>(B2021010) DFO(6604746-01)</i>
--------	--	---

2303 - Jackfish Bay to St. Ignace Island - New Edition - 29-MAY-2015 - US Standard Datum

28-MAY-2021

LNMD. 07-AUG-2020

Add	obstruction with known depth of 3¼ fathoms (See Chart No. 1, K41) This notice affects Electronic Navigational Chart: CA373066	48°47'12.0"N 086°58'41.2"W <i>DFO(6604773-02)</i>
-----	---	--

2304 - Oiseau Bay to/à Jackfish Bay - New Edition - 20-FEB-2004 - NAD 1983

28-MAY-2021

LNMD. 07-AUG-2020

Add obstruction with known depth of 3¼ fathoms
(See Chart No. 1, K41)
This notice affects Electronic Navigational Chart: CA373066
48°47'12.0"N 086°58'41.2"W

DFO(6604773-02)

Delete depth of 4½ fathoms
(See Chart No. 1, I10)
48°45'52.5"N 086°27'15.0"W

DFO(6604773-03)

Add obstruction with known depth of 1½ fathoms
(See Chart No. 1, K41)
This notice affects Electronic Navigational Chart: CA373067
48°45'56.4"N 086°27'13.4"W

DFO(6604773-04)

2305 - Jackfish Bay - New Edition - 05-OCT-2007 - NAD 1983

28-MAY-2021

Delete depth of 6 fathoms
(See Chart No. 1, I10)
48°47'11.2"N 086°58'41.5"W

DFO(6604773-01)

Add obstruction with known depth of 3¼ fathoms
(See Chart No. 1, K41)
This notice affects Electronic Navigational Chart: CA373066
48°47'12.0"N 086°58'41.2"W

DFO(6604773-02)

2306 - Peninsula Harbour and/et Port Munro - New Edition - 24-AUG-2007 - NAD 1983

28-MAY-2021

Add obstruction with known depth of 1½ fathoms
(See Chart No. 1, K41)
This notice affects Electronic Navigational Chart: CA373067
48°45'56.4"N 086°27'13.4"W

DFO(6604773-04)

Add obstruction with known depth of ¾ fathoms
(See Chart No. 1, K41)
This notice affects Electronic Navigational Chart: CA373067
48°45'44.6"N 086°26'15.1"W

DFO(6604773-05)

Delete depth of 5½ fathoms
(See Chart No. 1, I10)
48°45'56.0"N 086°27'11.7"W

DFO(6604773-06)

4021 - Pointe Amour à / to Cape Whittle et / and Cape George - New Edition - 01-NOV-2002 - NAD 1983

14-MAY-2021

LNMD. 09-APR-2021

Add drying height of 1 fathom 1 foot
(See Chart No. 1, I15)
50°42'23.2"N 058°55'47.4"W

DFO(6309430-01)

Amend note Carte / Chart 4474 to read Carte / Chart 4967
(See Chart No. 1, A18)
50°48'12.0"N 058°41'30.0"W

DFO(6309430-02)

Delete Carte / Chart 4469
(See Chart No. 1, A18)
50°23'46.0"N 058°55'43.0"W

DFO(6309430-03)

4024 - Baie des Chaleurs/Chaleur Bay aux/to Îles de la Madeleine - New Edition - 06-MAR-2015 - NAD 1983		
21-MAY-2021		LNMD. 30-APR-2021
Add	note ZONE DE PÊCHE 1 / FISHING ZONE 1 This notice affects Electronic Navigational Chart: CA279075	48°08'34.0"N 063°14'54.0"W <i>DFO(6410604-01)</i>
4025 - Cap Whittle à/to Havre-Saint-Pierre et/and Île d'Anticosti - New Edition - 28-MAR-2014 - NAD 1983		
21-MAY-2021		LNMD. 30-APR-2021
Add	note ZONE DE PÊCHE 1 / FISHING ZONE 1 This notice affects Electronic Navigational Chart: CA279043	49°45'50.0"N 061°16'00.0"W <i>DFO(6410604-02)</i>
4026 - Havre Saint-Pierre et/and Cap des Rosiers à/to Pointe des Monts - New Edition - 23-MAY-2014 - NAD 1983		
21-MAY-2021		LNMD. 30-APR-2021
Add	note ZONE DE PÊCHE 1 / FISHING ZONE 1 This notice affects Electronic Navigational Chart: CA279044	49°35'58.0"N 065°15'13.0"W <i>DFO(6410604-03)</i>
4116 - Approaches to / Approches à Saint John - New Edition - 31-AUG-2007 - NAD 1983		
07-MAY-2021		LNMD. 03-JUL-2020
Delete	depth of 9.8 metres (See Chart No. 1, I10) This notice affects Electronic Navigational Chart: CA376011, CA576005	45°13'56.0"N 066°03'03.0"W <i>DFO(6309418-02)</i>
Add	works under construction with legend Under/En construction (2020) (See Chart No. 1, F32) This notice affects Electronic Navigational Chart: CA376011	between 45°16'03.9"N 066°04'14.1"W and 45°15'57.6"N 066°04'01.8"W <i>DFO(6309418-03)</i>
Add	depth of 9.7 metres (See Chart No. 1, I10) This notice affects Electronic Navigational Chart: CA376011	45°13'21.0"N 066°02'18.0"W <i>DFO(6309418-09)</i>
Delete	depth of 10.7 metres (See Chart No. 1, I10) This notice affects Electronic Navigational Chart: CA376011	45°13'18.0"N 066°02'36.0"W <i>DFO(6309418-10)</i>
Add	depth of 10.3 metres (See Chart No. 1, I10) This notice affects Electronic Navigational Chart: CA376011	45°13'14.0"N 066°02'37.0"W <i>DFO(6309418-11)</i>
4117 - Saint John Harbour and Approaches / et les approches - New Edition - 29-MAY-2009 - NAD 1983		
07-MAY-2021		LNMD. 03-JUL-2020
Affix	patch Download Patch - https://www.notmar.gc.ca/chsftp/patches/4117_6309418_1_202104060737.pdf This notice affects Electronic Navigational Chart: CA576005, CA676584	45°16'03.0"N 066°04'19.0"W <i>DFO(6309418-01)</i>
Delete	depth of 9.8 metres (See Chart No. 1, I10) This notice affects Electronic Navigational Chart: CA376011, CA576005	45°13'56.0"N 066°03'03.0"W <i>DFO(6309418-02)</i>

Add	depth of 11.3 metres (See Chart No. 1, I10) This notice affects Electronic Navigational Chart: CA576005	45°13'54.0"N 066°03'01.3"W <i>DFO(6309418-04)</i>
Affix	patch Download Patch - https://www.notmar.gc.ca/chsftp/patches/4117_6309418_5_202103311237.pdf This notice affects Electronic Navigational Chart: CA576005	45°13'20.0"N 066°02'00.0"W <i>DFO(6309418-05)</i>
Delete	depth of 12.5 metres (See Chart No. 1, I10) This notice affects Electronic Navigational Chart: CA576005	45°12'53.3"N 066°02'32.0"W <i>DFO(6309418-06)</i>
Add	depth of 10.9 metres (See Chart No. 1, I10) This notice affects Electronic Navigational Chart: CA576005	45°12'52.5"N 066°02'31.0"W <i>DFO(6309418-07)</i>
Add	depth of 11.6 metres (See Chart No. 1, I10) This notice affects Electronic Navigational Chart: CA576005	45°12'41.7"N 066°02'28.0"W <i>DFO(6309418-08)</i>
4244 - Wedgeport and Vicinity / et les abords - New Edition - 26-DEC-2003 - NAD 1983 21-MAY-2021		LNMD. 19-JUN-2020
Add	marine farm (See Chart No. 1, K48.2) This notice affects Electronic Navigational Chart: CA476048	43°46'52.0"N 065°53'55.0"W <i>DFO(6309419-01)</i>
4279 - Bras D'Or Lake - New Edition - 25-SEP-2020 - World Geodetic System 1984 14-MAY-2021		
Delete	depth of 1.8 metres (See Chart No. 1, I10) This notice affects Electronic Navigational Chart: CA376272, CA476678	45°35'40.9"N 061°12'13.2"W <i>DFO(6309411-01)</i>
Add	depth of 0.5 metres (See Chart No. 1, I10) This notice affects Electronic Navigational Chart: CA376272, CA476678	45°35'38.8"N 061°12'14.0"W <i>DFO(6309411-02)</i>
Add	drying height of 0.5 metres (See Chart No. 1, I15) This notice affects Electronic Navigational Chart: CA376272, CA476678	45°35'56.9"N 061°11'25.6"W <i>DFO(6309411-04)</i>
Add	drying height of 0.7 metres (See Chart No. 1, I15) This notice affects Electronic Navigational Chart: CA376272, CA476678	45°35'04.0"N 061°11'35.3"W <i>DFO(6309411-06)</i>
Add	depth of 0.4 metres (See Chart No. 1, I10) This notice affects Electronic Navigational Chart: CA376272, CA476678	45°34'56.4"N 061°11'21.7"W <i>DFO(6309411-08)</i>

Delete depth of 0.8 metres 45°34'22.6"N 061°11'18.4"W
(See Chart No. 1, I10)
This notice affects Electronic Navigational Chart: CA376272, CA476678
DFO(6309411-09)

Add drying height of 0 metres 45°34'23.7"N 061°11'15.4"W
(See Chart No. 1, I15)
This notice affects Electronic Navigational Chart: CA376272, CA476678
DFO(6309411-10)

4301 - Canso Harbour to Strait of Canso - New Chart - 31-MAY-2019 - World Geodetic System 1984

14-MAY-2021

LNMD. 12-MAR-2021

Delete depth of 1.8 metres 45°35'40.9"N 061°12'13.2"W
(See Chart No. 1, I10)
This notice affects Electronic Navigational Chart: CA376272, CA476678
DFO(6309411-01)

Add depth of 0.5 metres 45°35'38.8"N 061°12'14.0"W
(See Chart No. 1, I10)
This notice affects Electronic Navigational Chart: CA376272, CA476678
DFO(6309411-02)

Add drying height of 0.5 metres 45°35'56.9"N 061°11'25.6"W
(See Chart No. 1, I15)
This notice affects Electronic Navigational Chart: CA376272, CA476678
DFO(6309411-04)

Add drying height of 0.7 metres 45°35'04.0"N 061°11'35.3"W
(See Chart No. 1, I15)
This notice affects Electronic Navigational Chart: CA376272, CA476678
DFO(6309411-06)

Add depth of 0.4 metres 45°34'56.4"N 061°11'21.7"W
(See Chart No. 1, I10)
This notice affects Electronic Navigational Chart: CA376272, CA476678
DFO(6309411-08)

Delete depth of 0.8 metres 45°34'22.6"N 061°11'18.4"W
(See Chart No. 1, I10)
This notice affects Electronic Navigational Chart: CA376272, CA476678
DFO(6309411-09)

Add drying height of 0 metres 45°34'23.7"N 061°11'15.4"W
(See Chart No. 1, I15)
This notice affects Electronic Navigational Chart: CA376272, CA476678
DFO(6309411-10)

4302 - Strait of Canso - New Chart - 28-SEP-2012 - NAD 1983

14-MAY-2021

LNMD. 23-APR-2021

Delete depth of 1.8 metres 45°35'40.9"N 061°12'13.2"W
(See Chart No. 1, I10)
This notice affects Electronic Navigational Chart: CA376272, CA476678
DFO(6309411-01)

Add depth of 0.5 metres 45°35'38.8"N 061°12'14.0"W
(See Chart No. 1, I10)
This notice affects Electronic Navigational Chart: CA376272, CA476678
DFO(6309411-02)

Delete	depth of 1.8 metres (See Chart No. 1, I10) This notice affects Electronic Navigational Chart: CA476678	45°35'55.1"N 061°11'22.8"W <i>DFO(6309411-03)</i>
Add	drying height of 0.5 metres (See Chart No. 1, I15) This notice affects Electronic Navigational Chart: CA376272, CA476678	45°35'56.9"N 061°11'25.6"W <i>DFO(6309411-04)</i>
Delete	depth of 0.8 metres (See Chart No. 1, I10) This notice affects Electronic Navigational Chart: CA476678	45°35'04.5"N 061°11'38.9"W <i>DFO(6309411-05)</i>
Add	drying height of 0.7 metres (See Chart No. 1, I15) This notice affects Electronic Navigational Chart: CA376272, CA476678	45°35'04.0"N 061°11'35.3"W <i>DFO(6309411-06)</i>
Delete	depth of 1.5 metres (See Chart No. 1, I10) This notice affects Electronic Navigational Chart: CA476678	45°34'57.1"N 061°11'21.5"W <i>DFO(6309411-07)</i>
Add	depth of 0.4 metres (See Chart No. 1, I10) This notice affects Electronic Navigational Chart: CA376272, CA476678	45°34'56.4"N 061°11'21.7"W <i>DFO(6309411-08)</i>
Delete	depth of 0.8 metres (See Chart No. 1, I10) This notice affects Electronic Navigational Chart: CA376272, CA476678	45°34'22.6"N 061°11'18.4"W <i>DFO(6309411-09)</i>
Add	drying height of 0 metres (See Chart No. 1, I15) This notice affects Electronic Navigational Chart: CA376272, CA476678	45°34'23.7"N 061°11'15.4"W <i>DFO(6309411-10)</i>
4335 - Strait of Canso and Approaches / et les approches - New Edition - 04-JAN-2008 - NAD 1983		
14-MAY-2021		LNMD. 16-APR-2021
Delete	depth of 0 fathoms, 5 feet (See Chart No. 1, I10) This notice affects Electronic Navigational Chart: CA376272, CA476678	45°35'42.2"N 061°12'11.9"W <i>DFO(6309411-01)</i>
Add	depth of 0 fathoms, 2 feet (See Chart No. 1, I10) This notice affects Electronic Navigational Chart: CA376272, CA476678	45°35'38.8"N 061°12'14.0"W <i>DFO(6309411-02)</i>
Delete	depth of 0 fathoms, 3 feet (See Chart No. 1, I10) This notice affects Electronic Navigational Chart: CA476678	45°35'56.0"N 061°11'25.0"W <i>DFO(6309411-03)</i>
Add	drying height of 0 fathoms, 2 feet (See Chart No. 1, I15) This notice affects Electronic Navigational Chart: CA376272, CA476678	45°35'56.9"N 061°11'25.6"W <i>DFO(6309411-04)</i>

Add drying height of 0 fathoms 45°34'23.7"N 061°11'15.4"W
(See Chart No. 1, I15)
This notice affects Electronic Navigational Chart: CA376272, CA476678
DFO(6309411-10)

4426 - Dalhousie Harbour - New Edition - 02-AUG-2002 - NAD 1983
28-MAY-2021

Delete front range/leading light Iso R 1s 23ft 48°04'20.5"N 066°22'10.3"W
(See Chart No. 1, P20.2)
(G2021013) LL(1345.4) DFO(6309427-01)

Add light Fl G 4s5M 48°04'20.6"N 066°22'10.4"W
(See Chart No. 1, P1)
(G2021014) LL(1345) DFO(6309428-01)

4426 - Rivière Ristigouche / Restigouche River - New Edition - 02-AUG-2002 - NAD 1983
28-MAY-2021

Delete front range/leading light QR 48°04'20.5"N 066°22'10.3"W
(See Chart No. 1, P20.2)
(G2021013) LL(1345.4) DFO(6309427-01)

Add light Fl G 48°04'20.6"N 066°22'10.4"W
(See Chart No. 1, P1)
(G2021014) LL(1345) DFO(6309428-01)

4459 - Summerside Harbour - New Edition - 29-MAY-2020 - NAD 1983
21-MAY-2021

Add depth of 4.1 metres 46°23'13.0"N 063°47'32.8"W
(See Chart No. 1, I10)
This notice affects Electronic Navigational Chart: CA576182
DFO(6309421-01)

Add depth of 4.3 metres 46°23'13.9"N 063°47'29.2"W
(See Chart No. 1, I10)
This notice affects Electronic Navigational Chart: CA576182
DFO(6309421-02)

4491 - Malpeque Bay - New Edition - 13-DEC-2002 - NAD 1983
28-MAY-2021

Reposition green port hand lighted pillar buoy FIG, marked JP1 46°35'01.6"N 063°39'52.1"W
(See Chart No. 1, Qg) to 46°34'09.9"N 063°38'23.5"W
(G2021011) LL(1065.1) DFO(6309425-01)

Reposition red starboard hand lighted pillar buoy QR, marked JP4 46°34'34.7"N 063°40'33.3"W
(See Chart No. 1, Qf) to 46°34'20.0"N 063°39'32.1"W
(G2021012) LL(1065.3) DFO(6309426-01)

4722 - Terrington Basin - New Edition - 25-OCT-2013 - NAD 1983
21-MAY-2021

Replace depth of 13.4 metres with depth of 12.7 metres 53°21'06.5"N 060°20'52.9"W
(See Chart No. 1, I10)
This notice affects Electronic Navigational Chart: CA376739, CA576211
DFO(6309395-01)

Add	depth of 10.5 metres (See Chart No. 1, I10) This notice affects Electronic Navigational Chart: CA576211	53°21'05.3"N 060°20'54.4"W <i>DFO(6309395-02)</i>
Delete	depth of 11.6 metres (See Chart No. 1, I10) This notice affects Electronic Navigational Chart: CA576211	53°21'05.9"N 060°21'00.1"W <i>DFO(6309395-03)</i>
Add	depth of 9.7 metres (See Chart No. 1, I10) This notice affects Electronic Navigational Chart: CA576211	53°21'05.7"N 060°21'00.4"W <i>DFO(6309395-04)</i>
Replace	depth of 9.9 metres with depth of 8 metres (See Chart No. 1, I10) This notice affects Electronic Navigational Chart: CA576211	53°21'09.5"N 060°20'59.4"W <i>DFO(6309395-05)</i>
Add	depth of 2.6 metres (See Chart No. 1, I10) This notice affects Electronic Navigational Chart: CA576211	53°21'07.8"N 060°21'01.8"W <i>DFO(6309395-06)</i>
Add	depth of 3.5 metres (See Chart No. 1, I10) This notice affects Electronic Navigational Chart: CA576211	53°21'06.0"N 060°21'05.6"W <i>DFO(6309395-07)</i>
Add	depth of 6.9 metres (See Chart No. 1, I10) This notice affects Electronic Navigational Chart: CA576211	53°21'02.7"N 060°21'08.1"W <i>DFO(6309395-08)</i>
Add	depth of 7.1 metres (See Chart No. 1, I10) This notice affects Electronic Navigational Chart: CA576211	53°21'02.3"N 060°21'09.5"W <i>DFO(6309395-09)</i>
Add	depth of 7.3 metres (See Chart No. 1, I10) This notice affects Electronic Navigational Chart: CA576211	53°21'01.1"N 060°21'18.2"W <i>DFO(6309395-10)</i>
Amend	note Adjoining Chart/Carte adjacente 4728 to read Adjoining Chart/Carte adjacente 5165 (See Chart No. 1, A20)	east border of chart at 53°21'45"N <i>DFO(6309395-11)</i>
4826 - Burgeo to / à François - New Chart - 24-FEB-2006 - NAD 1983		
14-MAY-2021		LNMD. 06-DEC-2019
Add	marine farm (See Chart No. 1, K48.2) This notice affects Electronic Navigational Chart: CA376619	47°37'19.4"N 056°44'54.2"W <i>DFO(6309405-01)</i>
Add	marine farm (See Chart No. 1, K48.2) This notice affects Electronic Navigational Chart: CA376619	47°36'00.0"N 056°44'48.0"W <i>DFO(6309405-02)</i>

4881 - Trout River - New Chart - 26-JUL-2019 - World Geodetic System 1984

21-MAY-2021

LNMD. 23-OCT-2020

Delete	depth of 3 metres (See Chart No. 1, I10) This notice affects Electronic Navigational Chart: CA576711	49°28'50.1"N 058°07'58.1"W <i>DFO(6309404-01)</i>
Delete	depth of 1.3 metres (See Chart No. 1, I10) This notice affects Electronic Navigational Chart: CA576711	49°28'49.0"N 058°07'56.7"W <i>DFO(6309404-02)</i>
Add	depth of 1.3 metres (See Chart No. 1, I10) This notice affects Electronic Navigational Chart: CA576711	49°28'49.7"N 058°07'57.8"W <i>DFO(6309404-03)</i>

4913 - Caraquet Harbour, Baie de Shippegan and / et Miscou Harbour - New Chart - 07-AUG-1992 - NAD 1983

21-MAY-2021

LNMD. 26-MAR-2021

Replace	depth of 7.7 metres with depth of 7.4 metres (See Chart No. 1, I10) This notice affects Electronic Navigational Chart: CA476275	47°48'10.7"N 064°54'39.4"W <i>DFO(6309415-01)</i>
Add	depth of 1.9 metres (See Chart No. 1, I10) This notice affects Electronic Navigational Chart: CA476275	47°48'56.9"N 064°54'26.3"W <i>DFO(6309415-02)</i>
Delete	depth of 2.7 metres (See Chart No. 1, I10) This notice affects Electronic Navigational Chart: CA476275	47°48'36.9"N 064°54'11.2"W <i>DFO(6309415-03)</i>
Add	depth of 1.9 metres (See Chart No. 1, I10) This notice affects Electronic Navigational Chart: CA476275	47°48'35.0"N 064°54'11.5"W <i>DFO(6309415-04)</i>
Add	depth of 3.9 metres (See Chart No. 1, I10) This notice affects Electronic Navigational Chart: CA476275	47°48'27.6"N 064°53'50.4"W <i>DFO(6309415-05)</i>
Delete	depth of 4.5 metres (See Chart No. 1, I10) This notice affects Electronic Navigational Chart: CA476275	47°48'28.5"N 064°53'44.5"W <i>DFO(6309415-06)</i>
Add	depth of 2.9 metres (See Chart No. 1, I10) This notice affects Electronic Navigational Chart: CA476275	47°48'29.6"N 064°53'45.7"W <i>DFO(6309415-07)</i>
Delete	depth of 8.4 metres (See Chart No. 1, I10) This notice affects Electronic Navigational Chart: CA476275	47°48'50.3"N 064°51'02.4"W <i>DFO(6309415-08)</i>

Add	depth of 8 metres (See Chart No. 1, I10) This notice affects Electronic Navigational Chart: CA476275	47°48'50.1"N 064°51'01.4"W <i>DFO(6309415-09)</i>
Replace	depth of 11 metres with depth of 10.7 metres (See Chart No. 1, I10) This notice affects Electronic Navigational Chart: CA476275	47°49'34.2"N 064°48'47.8"W <i>DFO(6309415-10)</i>
Add	depth of 1.8 metres (See Chart No. 1, I10) This notice affects Electronic Navigational Chart: CA476275	47°48'50.8"N 064°54'18.6"W <i>DFO(6309415-11)</i>
Replace	depth of 1.7 metres with depth of 1.6 metres (See Chart No. 1, I10) This notice affects Electronic Navigational Chart: CA476275	47°48'54.1"N 064°54'22.4"W <i>DFO(6309415-12)</i>
4954 - Chenal du Havre de la Grande Entrée - New Edition - 18-MAR-2016 - NAD 1983		
28-MAY-2021		LNM/D. 20-NOV-2020
Add	depth of 0 metres 8 decimetres (See Chart No. 1, I10) This notice affects Electronic Navigational Chart: CA579084	47°33'43.9"N 061°33'42.8"W <i>DFO(6410586-01)</i>
Add	depth of 5 metres 9 decimetres (See Chart No. 1, I10) This notice affects Electronic Navigational Chart: CA579084	47°33'56.9"N 061°33'24.1"W <i>DFO(6410586-02)</i>
Add	depth of 6 metres 1 decimetre (See Chart No. 1, I10) This notice affects Electronic Navigational Chart: CA579084	47°35'28.0"N 061°31'56.0"W <i>DFO(6410586-03)</i>
Add	depth of 6 metres 4 decimetres (See Chart No. 1, I10) This notice affects Electronic Navigational Chart: CA579084	47°35'28.4"N 061°31'53.5"W <i>DFO(6410586-04)</i>
Delete	depth of 6 metres 7 decimetres (See Chart No. 1, I10) This notice affects Electronic Navigational Chart: CA579084	47°35'37.8"N 061°31'49.3"W <i>DFO(6410586-05)</i>
Add	depth of 6 metres 4 decimetres (See Chart No. 1, I10) This notice affects Electronic Navigational Chart: CA579084	47°35'37.9"N 061°31'49.3"W <i>DFO(6410586-06)</i>
Delete	depth of 6 metres 6 decimetres (See Chart No. 1, I10) This notice affects Electronic Navigational Chart: CA579084	47°35'45.9"N 061°31'49.7"W <i>DFO(6410586-07)</i>
Add	depth of 6 metres 3 decimetres (See Chart No. 1, I10) This notice affects Electronic Navigational Chart: CA579084	47°35'46.4"N 061°31'49.9"W <i>DFO(6410586-08)</i>

Delete	depth of 6 metres 6 decimetres (See Chart No. 1, I10) This notice affects Electronic Navigational Chart: CA579084	47°35'47.0"N 061°31'50.0"W	<i>DFO(6410586-09)</i>
 4971 - Blanc Sablon à/to Baie de Bonne-Espérance - New Chart - 10-NOV-2017 - NAD 1983			
	07-MAY-2021		LN/D. 17-AUG-2018
Amend	FI R 6s10m9M to read FI R 6s10m6M against light (See Chart No. 1, P16) This notice affects Electronic Navigational Chart: CA479247, CA579248	51°24'54.1"N 057°08'58.7"W	<i>(Q2021009) LL(1526) DFO(6410565-01)</i>
 5163 - Ticolorak Head to/à Green Island - New Chart - 30-MAR-2018 - NAD 1983			
	21-MAY-2021		LN/D. 13-MAR-2020
Amend	note Adjoining Chart/Carte Adjacente 5143 to read Adjoining Chart/Carte adjacente 5164 (See Chart No. 1, A20)	south border of chart at 058°57'30"W	<i>DFO(6309395-13)</i>
 5165 - Epinette Point to/à Terrington Basin - New Chart - 28-FEB-2020 - NAD 1983			
	21-MAY-2021		LN/D. 07-AUG-2020
Replace	depth of 13.4 metres with depth of 12.7 metres (See Chart No. 1, I10) This notice affects Electronic Navigational Chart: CA376739, CA576211	53°21'06.5"N 060°20'52.9"W	<i>DFO(6309395-01)</i>
Amend	note Adjoining Chart/Carte Adjacente 5143 to read Adjoining Chart/Carte adjacente 5164 (See Chart No. 1, A20)	north border of chart at 59°57'30"W	<i>DFO(6309395-12)</i>
 8015 - Funk Island and Approaches / et les approches - New Edition - 16-NOV-2001 - NAD 1983			
	07-MAY-2021		LN/D. 02-DEC-2016
Add	subsurface Ocean Data Acquisition System ODAS/SADO with known depth of 1095 metres (See Chart No. 1, L25)	49°45'57.7"N 049°38'22.9"W	<i>DFO(6309410-01)</i>

Section 3: Radio Aids to Marine Navigation Corrections

*510/21 Radio Aids to Marine Navigation 2021 (Atlantic, St. Lawrence, Great Lakes, Lake Winnipeg, Arctic and Pacific)

Page 3-44

ADD AS FOLLOWS:

3.9.8.4 Frequency Guard - Great Lakes Basin

Amendments to the VHF Practices and Procedures regulations* which make Channel 13 (156.650 MHz) the dedicated Bridge-to-Bridge frequency in the Great Lakes Basin became effective February 1, 1989. At that time the VHF listening watch requirements for vessels upbound/downbound in these waters were established as follows:

*Note: In 2020, the VHF Practices and Procedures regulations were repealed. These amendments are now contained in the Navigation Safety Regulations, 2020.

Page 4-15

AMEND AS FOLLOWS:

4.2.1.7 Important Safety Notice Concerning VHF/DSC

After having received a distress, urgency or safety broadcast announcement on VHF/DSC Ch70, the VHF/DSC equipment will automatically switch the DSC radio to VHF Ch16 for the subsequent voice announcements. Mariners who are required by the ~~VHF Practices and Procedures Regulations~~ Navigation Safety Regulations, 2020 to monitor a specific VTS sector frequency should return the radio to the appropriate working frequency after determining, on Ch16, the impact of the VHF/DSC alert broadcast announcement on their vessel's operations.

Page 5-20

AMEND AS FOLLOWS:

5.9.4 Marine Forecast Areas

Table 5-26 - Eastern and Western Arctic Waters, and Hudson Bay

Number	Area Name	Forecast Availability Period*	Number	Area Name	Forecast Availability Period*
...
117	Helman Ulukhaktok	Shipping season	310	James Bay	Shipping season
...

Page 5-25

AMEND AS FOLLOWS UNDER SECTION 5.9.6:

Table 5-33 - FQCN02 CWAO - Marine Forecasts and FICN02 CWIS - Ice Bulletin for METAREA XVII South of 75°N

Number	Area Name	Number	Area Name	Number	Area Name
100	Prince Alfred	115	Banks	173	Northwest Beaufort
101	McClure	116	Amundsen	730	CT1
111	Yukon Coast	117	Helman Ulukhaktok	731	CT2
112	MacKenzie	170	North Tuktoyaktuk	732	CT3
113	Tuktoyaktuk	171	North MacKenzie	-	-
114	Baillie	172	West Prince Alfred	-	-

Page 5-26

AMEND AS FOLLOWS UNDER SECTION 5.9.6:

Table 5-35 - FQCN04 CWAO - Marine Forecasts and FICN04 CWIS - Ice Bulletin for METAREA XVIII South of 75°N

Number	Area Name	Number	Area Name	Number	Area Name
101	McClure	122	St. Roch	139	West Clyde
102	Prince of Wales	123	Larsen	140	East Clyde
103	Melville	124	Peel	141	West Davis
104	Rae	125	Barrow	142	East Davis
105	McClintock	132	Regent	153	Igloodik
116	Amundsen	133	Boothia	154	Prince Charles
117	Helman Ulukhaktok	134	Committee	175	Navy Board
118	Dolphin	135	Admiralty	176	Pond
119	Coronation	136	Lancaster	177	Bathurst
120	Dease	137	West Baffin	706	Liddon
121	Maud	138	East Baffin	-	-

Section 4: Sailing Directions and Small Craft Guide Corrections

ATL 110 — St. Lawrence River — Cap Whittle/Cap Gaspé to Les Escoumins and Anticosti Island, Third Edition, 2011 —

Chapter 1 — Paragraph 267,

Delete: The islands' elevations vary between 75 and 210 m

Replace by: The islands' altitudes vary between 35 and 210 m

(Q2021-017.1)

ATL 111 — St. Lawrence River — Île Verte to Québec and Fjord du Saguenay, Third Edition, 2007 —

Chapter 1 — Paragraph 83

Delete: 7.6 m

Replace by: 8.0 m

(Q2021-024.1)

Section 5: List of Lights, Buoys and Fog Signals Corrections

The amendments are highlighted and deletions are crossed out. For general and region-specific information on the List of Lights, click on the following links: [Newfoundland and Labrador Coast](#), [Atlantic Coast](#), [Inland Waters](#) and [Pacific Coast](#).

No.	Name	Position ----- Latitude N. Longitude W.	Light Characteristics	Focal Height in m. above water	Nomi- nal Range	Description ----- Height in meters above ground	Remarks ----- Fog Signals
-----	------	--	--------------------------	--	-----------------------	--	---------------------------------

ATLANTIC COAST

CAPE BRETON ISLAND, N.S. (LL 704.85 – 882.5)

706 H3416	West Arichat Wharf	On outer end of wharf. 45 30 50.8 061 04 59.2	Fl G 4s	3.9	4	Pipe swing pole. 3.6	Flash 1 s; eclipse 3 s. Operates at night only. Seasonal. Chart: 4301 Edn 05/21 (G21-021)
--------------	-----------------------	--	----------------	-----	----------	-------------------------	--

GULF OF ST. LAWRENCE (LL 883.2 – 940.3, 1169.1 – 1426, 1477.5 – 1584)

1345	Dalhousie Harbour Light	48 04 20.6 066 22 10.4	Fl G 4s	5	Square skeleton tower, green-white-black square daymark.	Flash 1 s; eclipse 3 s. Year round. Chart: 4426 Edn 05/21 (G21-014)
1345.4 H1620.4							Delete from list.
1345.5 H1620.41	Dalhousie Harbour range						Delete from list. Chart: 4426 Edn 05/21 (G20-204, G21-013)
1526 H0123	Baie de Blanc- Sablon	Blanc-Sablon wharf. 51 24 54.1 057 08 58.7	Fl R 6s	10.4	6	Mast. 8.2	Flash 1 s; eclipse 5 s. Omnidirectional. Year round. Chart: 4971 Edn 05/21 (Q21-009)

PRINCE EDWARD ISLAND (LL 942 – 1084.7)

1065.1	Malpeque Harbour light buoy JP1	Malpeque and Damley. 46 34 09.9 063 38 23.5	Fl G 4s	Green, marked "JP1".	Seasonal. Chart: 4491 Edn 05/21 (G21-011)
1065.3	Malpeque Harbour light buoy JP4	Malpeque and Damley. 46 34 20.0 063 39 32.1	Q R 1s	Red, marked "JP4".	Seasonal. Chart: 4491 Edn 05/21 (G21-012)

ST. LAWRENCE RIVER (LL 1584.5 – 1772, 1823.8 – 2185.7, 2273 – 2365.95)

1732	Port de Rimouski light buoy HT2	Quai de Rimouski approach wharf. 48 29 32.5 068 31 11.8	Fl R 4s	Red, marked "HT2".	Seasonal. Chart: 1236 Edn 05/21 (Q21-025)
------	------------------------------------	--	---------	-------	-------	--------------------	---

Notices to Mariners – Monthly Eastern Edition
Section 5: List of Lights, Buoys and Fog Signals Corrections

No.	Name	Position ----- Latitude N. Longitude W.	Light Characteristics	Focal Height in m. above water	Nomi- nal Range	Description ----- Height in meters above ground	Remarks ----- Fog Signals
1732.2	Port de Rimouski light buoy HT3	Quai de Rimouski approach. 48 29 25.3 068 31 07.0	Fl G 4s	Green, marked "HT3".	Seasonal. Chart:1236 Edn 05/21 (Q21-026)
2014	Batture Simon light buoy D4	Grondines Anchorage. 46 35 30.2 072 00 25.7	Fl R 4s	Red spar, marked "D4".	Year round. Chart:1314 Edn 05/21 (Q21-001)
2030	Deschailons-sur- Saint-Laurent light buoy D31	Route de la Pointe- des-Grondines. 46 33 48.4 072 06 47.6	Q G 1s	Green spar, marked "D31".	Year round. Chart:1314 Edn 05/21 (Q21-002)
2323	Île Bouchard light buoy M77	Chenal de Verchères - Contrecoeur. 45 49 48.9 073 17 32.6	Fl G 4s	Green spar, marked "M77".	Year round. Chart:1311 Edn 05/21 (Q21-007)

INLAND WATERS

LAKE OF BAYS (LL 1410 – 1419)

1411	The Narrows Shoal East	SW. end of shoal. 45 15 11.0 078 55 38.0	Fl W 4s	6.7	4	Cylindrical mast, red and white rectangular daymark. 5.0	Seasonal. Chart:6023 Edn 05/21 (D21-019)
------	---------------------------	--	---------	-----	---	--	--

Marine Information Report and Suggestion Sheet

Name of Ship or Sender: Date:

Address of Sender:

Street # Street Name

Town / City: Prov / State: Postal Code / Zip Code:

Tel / Fax / E-mail address of sender:

Observation Date: Time (UTC):

Geographical Position:

Coordinate Position: Lat: Long:

Position Method: DGPS GPS with WAAS GPS Radar Other

Horizontal Datum Used: WGS84 NAD27 Other

Estimated Position Accuracy:

Chart #: Horizontal Datum: NAD83 NAD27

Chart Edition: Last Correction applied:

Publications affected (Quote the edition and page number):

*Full details (Attach additional sheets as necessary):

Mariners are requested to notify the responsible authorities when new or suspected dangers to navigation are discovered, changes are observed in aids to navigation, or corrections to publications are seen to be necessary.

In the case of new or suspected dangers to navigation, it is important that all details be given in order to aid with future investigations. Items of interest include heights, depths, physical description, type of bottom and equipment method used to position the item. It is helpful to mark details on the chart, which will be promptly replaced by the Canadian Hydrographic Service.

Reports should be made to the nearest Marine Communications and Traffic Services centre (MCTS) and should be confirmed in writing to:

Leader, Notices to Mariners
Canadian Coast Guard
Department of Fisheries and Oceans
Montreal, QC H2Y 2E7
Notmar.XNCR@dfo-mpo.gc.ca

In the case of information concerning aids to navigation or the *List of Lights, Buoys and Fog Signals* publication.

OR

Director General, Canadian Hydrographic Service &
Oceanographic Services
Department of Fisheries and Oceans
Ottawa, ON K1A 0E6
CHSinfo@dfo-mpo.gc.ca

In the case of new or suspected dangers to navigation or where corrections to *Sailing Directions* appear to be necessary.

For general questions on Canadian Coast Guard programs or services, please send an e-mail to:
info@dfo-mpo.gc.ca