



Fisheries and Oceans
Canada

Pêches et Océans
Canada

Canadian
Coast Guard

Garde côtière
canadienne

Notices to Mariners

Edition No. 09-2021
September 24, 2021



Safety First, Service Always

Monthly Eastern Edition

Canada 

Notices to Mariners – Monthly Eastern Edition
Edition No. 09-2021

Aussi disponible en français :
Avis aux navigateurs – Édition mensuelle de l'Est
Édition n° 09-2021

Published under the Authority of:

Canadian Coast Guard Programs
Aids to Navigation and Waterways
Fisheries and Oceans Canada
Montreal, QC H2Y 2E7

For more information, contact Notmar.XNCR@dfo-mpo.gc.ca.

© Her Majesty the Queen in Right of Canada,
as represented by the Minister of Fisheries, Oceans
and the Canadian Coast Guard, 2021.

Cat. No. Fs152-5E-PDF (Electronic PDF, English)
ISSN 1719-7678

Cat. No. Fs152-5F-PDF (Electronic PDF, French)
ISSN 1719-7694

A web version is available here:

<https://www.notmar.gc.ca/monthly-mensuel-en.php> (English)

<https://www.notmar.gc.ca/monthly-mensuel-fr.php> (French)

Explanatory Notes – Notices to Mariners (NOTMAR)

Geographical positions refer directly to the graduations of the largest scale Canadian Hydrographic Service chart (unless otherwise indicated).

Bearings refer to the true compass and are measured clockwise from 000° (North) clockwise to 359°; those relating to lights are from seaward.

Visibility of lights is that in clear weather.

Depths - The units used for soundings (metres, fathoms or feet) are stated in the title of each chart.

Elevations are normally given above Higher High Water, Large Tide (unless otherwise indicated).

Distances may be calculated as follows:

- 1 nautical mile = 1,852 metres (6,076.1 feet)
- 1 statute mile = 1,609.3 metres (5,280 feet)
- 1 metre = 3.28 feet

Temporary and Preliminary Notices to Mariners – Section 1A of *Notices to Mariners*

These notices are indicated by a (T) or a (P), respectively. Please note that nautical charts are not amended by the Canadian Hydrographic Service for temporary (T) and preliminary (P) notices. It is recommended that mariners chart these corrections in pencil. For the list of charts affected by (T) & (P) notices, please refer to the current [Notices to Mariners - Monthly Summary of Temporary and Preliminary Notices](#) publication.

Suggestions and Corrections Form

This form is specifically for suggestions and corrections to Notices to Mariners publications. It is available [online](#) and also in [fillable PDF format](#) included with the monthly publication ZIP file.

To report chart discrepancies and/or corrections to the *Sailing Directions* booklets: Fill out the [Marine Information Reporting Form](#) and/or email chsinfo@dfo-mpo.gc.ca.

To report emergencies or navigational hazards: [Contact your nearest MCTS centre](#)

- VHF channel 16 (156.8 MHz)
- MF/HF frequency 2182 kHz/4125 kHz (where available)
- *16 on a cellphone (where available)

NOTMAR Website – Monthly Editions, Chart Corrections and Chart Patches

The NOTMAR website allows users to access the [monthly publications](#), [chart corrections](#), and [chart patches](#).

Users can subscribe for free to the [email notification service](#) to receive notifications when charts of interest are updated, including their patches, as well as when a new Monthly Edition of *Notices to Mariners* is published.

In addition, the monthly publication and related files to download, such as chart patches and *Sailing Directions* diagrams, can be obtained all together through the download of a single ZIP file.

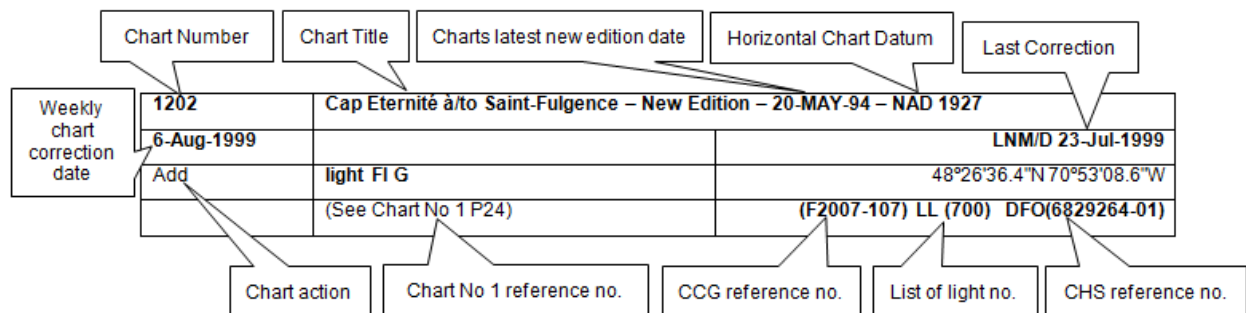
Explanatory Notes – Canadian Hydrographic Service (CHS)

Chart Corrections – Section 2 of *Notices to Mariners*

Corrections to nautical charts will be listed in numerical order by chart number. Each chart correction listed applies only to that particular chart. Related charts, if any, will have their own specific correction listed separately.

Users should also refer to CHS *Chart 1: Symbols, Abbreviations and Terms* for additional information pertaining to the correction of charts.

The illustration below describes the elements that will comprise a typical Section 2 chart correction:



The last correction number is identified with the **LNMD** or **Last Notice to Mariners Number / Date**.

Mariners are advised that only the most critical changes that directly affect safety to navigation are issued in “Section 2 – Chart Corrections.” This limitation is required to ensure that charts remain as clear and easy to read as possible. As a result, mariners may see minor discrepancies of a non-critical nature between information in official publications. For example, a small change in the nominal range or focal height of a light may not result in the production of a chart correction in *Notices to Mariners*, but may result in a correction in the [List of Lights, Buoys and Fog Signals](#) publication.

Note: In the case of a discrepancy between information provided on CHS charts relating to aids to navigation, and the *List of Lights, Buoys and Fog Signals* publication, the latter shall be deemed as containing the most up-to-date information.

Canadian Nautical Charts & Publications

A source list of Canadian nautical charts and publications is published in Notice No. 14 of the *Notices to Mariners Annual Edition 2021*. The source supply and the prices effective at the time of printing are listed. For current chart edition dates, please refer to the following website: www.chs-shc.gc.ca/charts-cartes/paper-papier/index-eng.asp.

Explanatory Notes – Marine Communications and Traffic Services (MCTS)

Navigational Warnings / Notices to Shipping

The Canadian Coast Guard (CCG) is implementing a number of changes to the aids to navigation system in Canada.

These changes are advertised as Navigational Warnings, formerly called Notices to Shipping¹, that are broadcast by the CCG, and are then followed up with Notices to Mariners, then charts are updated by hand correction, reprints or new editions.

Mariners are advised that all relevant Navigational Warnings (NAVWARNs) should be kept until superseded by Notices to Mariners or through revised charts issued by the Canadian Hydrographic Service (CHS).

NAVWARNs are accessible on the applicable regional page on the CCG Navigational Warnings website at <http://nis.ccg-gcc.gc.ca>.

CHS is reviewing the impact of these changes with CCG and together are preparing an action plan on the issuing of chart revisions.

For further information, contact your regional NAVWARN Issuing Desk.

<p>Atlantic Region (North) *Port aux Basques MCTS Centre</p> <p>“N” Series NAVWARNs</p> <p>Canadian Coast Guard 49 Stadium Rd. P.O. Box 99 Port aux Basques, NL A0M 1C0</p> <p>Telephone: 709-695-2168 or 1-800-563-9089 Facsimile: 709-695-7784</p> <p>Email: NAVWARN.MCTSPortAuxBasques@innav.gc.ca</p>	<p>Central Region *Prescott MCTS Centre</p> <p>“Q” and “C” Series NAVWARNs</p> <p>Canadian Coast Guard 401 King Street West P.O. Box 1000 Prescott, ON K0E 1T0</p> <p>Telephone: 613-925-0666 Facsimile: 613-925-4519</p> <p>Email: NAVWARN.MCTSPrescott@innav.gc.ca</p>
<p>Atlantic Region (South) *Sydney MCTS Centre</p> <p>“M” Series NAVWARNs</p> <p>Canadian Coast Guard 1190 Westmount Road Sydney, NS B1R 2J6</p> <p>Telephone: 902-564-7751 or 1-800-686-8676 Facsimile: 902-564-7662</p> <p>Email: NAVWARN.MCTSSydney@innav.gc.ca</p>	<p>Arctic Region *Iqaluit MCTS Centre</p> <p><i>Operational from approximately mid-May until late December.</i></p> <p>“A” and “H” Series NAVWARNs</p> <p>Canadian Coast Guard P.O. Box 189 Iqaluit, NU X0A 0H0</p> <p><u>“A” Series NAVWARNs</u> Telephone: 867-979-5269</p> <p><u>“H” Series NAVWARNs</u> Telephone: 867-979-0310 Facsimile: 867-979-4264</p> <p>Email: NAVWARN.MCTSIqaluit@innav.gc.ca</p>

*Service available in English and in French.

¹ The expression “Notice to Shipping” was changed to “Navigational Warning” in January 2019.

Table of Contents

Section 1: General and Safety Information	1
Canadian Coast Guard Publication – Comments and Suggestions on Notices to Mariners (NOTMAR) Publications.....	1
Transport Canada – COVID-19 Measures, Updates and Guidance.....	1
Canadian Hydrographic Service – Notices to Mariners for Changes in Buoy Shape	1
Gulf of St. Lawrence – Protection of the North Atlantic Right Whale	1
Saguenay–St. Lawrence Marine Park - Beluga Whale Protection: Slowdown Area at the Mouth of the Saguenay Fjord and Area Closure at Baie Sainte-Marguerite	8
Saguenay-St. Lawrence Marine Park and Surrounding Waters – Whale Protection.....	11
*901/21 Canadian Hydrographic Service – Electronic Navigational Charts.....	12
*902/21 Transport Canada – Ship Safety Bulletin #14/2021.....	12
*904/21 Adolphus Reach to/à Big Bay – Private Light Buoys Permanently Established.....	13
*905/21 Rivière Ristigouche / Restigouche River – Unlit Buoys Repositioned.....	13
Section 1A: Temporary and Preliminary Notices	14
Reminder – Comment Period for Active Preliminary Notices	14
*906(P)/21 Cape St Francis to / à Baccalieu Island and / et Heart's Content – Fog Signal to be Discontinued	15
*907(T)/21 Lac des Deux Montagnes – Missing Unlit Buoy	15
*908(P)/21 Restoule River – Aid to Navigation to be Discontinued	16
Section 2: Chart Corrections	17
Section 3: Radio Aids to Marine Navigation Corrections	31
*909/21 Radio Aids to Marine Navigation 2021 (Atlantic, St. Lawrence, Great Lakes, Lake Winnipeg, Arctic and Pacific).....	31
Section 4: Sailing Directions and Small Craft Guide Corrections	34
Section 5: List of Lights, Buoys and Fog Signals Corrections	35

Numerical Index of Canadian Charts Affected

This numerical index lists all nautical charts mentioned in this monthly edition of Notices to Mariners. Only charts appearing in Section 2 of this publication require a chart correction. The appearance of charts in all other sections, particularly those related to the correction of other nautical publications, is included here for reference.

Chart No.	Pages	Chart No.	Pages	Chart No.	Pages
1312	17, 40	4587	24, 35		
1313	17	4591	24		
1438	17	4592	24, 25, 37		
1510	15, 17	4593	25, 37		
1514	18	4616	25, 35		
2019	13	4624	25		
2048	40	4641	36		
2085	18	4663	25		
2242	18	4667	25, 36		
2243	18, 19	4679	26, 36		
2244	20	4680	26		
2259	41	4701	26		
2261	20	4820	27		
2282	20, 41	4821	27, 36		
2291	20	4822	27		
2293	21	4831	27, 36		
4000	21	4839	27, 35		
4001	21	4843	28, 35		
4003	21	4845	38		
4006	21	4850	15, 28, 38		
4010	39	4862	37		
4016	21	4885	28		
4047	22	4905	39		
4099	22, 23	4906	40		
4118	14	4909	40		
4236	14	5032	28, 37		
4266	39	5179	28, 29, 36, 37		
4302	39	8007	29, 30		
4379	14	14853 (U.S.)	40		
4394	14				
4426	14				
4448	23, 39				
4462	24				
4463	39				
4512	24, 36				
4530	24, 37				

Section 1: General and Safety Information

Canadian Coast Guard Publication – Comments and Suggestions on Notices to Mariners (NOTMAR) Publications

In an effort to continuously improve the Notices to Mariners publications and to provide the most efficient service possible, the Notices to Mariners team invites all mariners and other interested parties to submit comments and suggestions on possible improvements to its various publications and services at the following email address: Notmar.XNCR@dfo-mpo.gc.ca.

Transport Canada – COVID-19 Measures, Updates and Guidance

(Recurrent publication of notice *401/20, originally published in the *Notices to Mariners – Monthly Eastern Edition 04/2020* publication.)

Please refer to the link below for the latest updates to transportation related measures taken by Transport Canada in response to the evolving novel Coronavirus disease (COVID-19): <https://www.tc.gc.ca/en/initiatives/covid-19-measures-updates-guidance-tc.html>.

For travel advice and all other updates, please visit: Canada.ca/coronavirus.

Canadian Hydrographic Service – Notices to Mariners for Changes in Buoy Shape

(Recurrent publication of notice *906/20, originally published in the *Notices to Mariners – Monthly Eastern Edition 09/2020* publication.)

As part of the CHS Digital Transformation and for the sake of economy, CHS will no longer systematically issue Notices to Mariners (NTM) for buoy shape changes only. These changes will, however, be applied to electronic navigation charts (ENCs) where applicable. The paper and raster versions will be updated during the New Edition process.

Gulf of St. Lawrence – Protection of the North Atlantic Right Whale

(Recurrent publication of notice *405/21, originally published in the *Notices to Mariners – Monthly Eastern Edition 04/2021* publication.)

Purpose

This notice describes the speed restriction zones that vessels must follow in the Gulf of St. Lawrence.

The Government of Canada has established these zones to reduce the risk of vessel collisions with North Atlantic right whales (NARW).

Context

Due to changing migration patterns of North Atlantic right whales and their increased presence in the Gulf of St. Lawrence, the Government of Canada has established seasonal speed restrictions in specific zones. These speed restrictions zones are defined as “static zones”, “dynamic shipping zones”, “seasonal management areas”, a trial “voluntary speed restriction zone” and a “restricted area”. [See the map below for details](#).

Note: Navigational Warnings outlining the speed restrictions are considered to be Notices to Shipping, which vessels **must follow**. The *Interim Order for the Protection of North Atlantic Right Whales (Eubalaena Glacialis) in the Gulf of St. Lawrence, 2021* enables the issuance of Navigational Warnings (NAVWARNs) imposing speed restrictions or navigation restrictions.

Speed restriction zones are described in monthly Notices to Mariners (NOTMARs), which are published by the Canadian Coast Guard (CCG). The status of these zones are broadcast through NAVWARNs, which are published by the CCG's Marine Communications and Traffic Services (MCTS) Centres.

Changes to speed restriction zones and measures

Based on consultations with industry and on scientific data, changes to the speed restriction zones will be effective from April 28, 2021, while the restricted area will be implemented based on whale presence:

- For a second consecutive year, a trial voluntary slowdown of 10.0 knots over the ground spanning from Cabot Strait (a line running from Cape North NS to Cape Ray NL) to the eastern edge of dynamic shipping zone E will be implemented at the beginning and end of the North Atlantic right whale season.
- Again this year, a restricted area located in and near Shediac Valley. The location and size are both based on historical data of North Atlantic right whale aggregations, while the triggering mechanism is based on in-season detections.
- As of this year, the 36.57 m (20-fathom) shallow water protocol will apply to all commercial fishing vessels.

Please refer to the latest NAVWARN issued by the CCG-MCTS for all speed restrictions currently in effect.

Speed Restriction Measures for 2021

These restrictions will be in effect from **April 28 to November 15, 2021**.

Exemption

The following exemption will apply to all measures:

- A vessel in distress or providing assistance to a person or a vessel in distress.

Static zones

In the static zones, **all** vessels above **13 m** in length overall (LOA) must proceed at a speed of not more than 10.0 knots over the ground.

Exceptions

Air cushion vessels operated by or on behalf of the Government of Canada that are engaged in ice-clearing activities from April to June in and around Chaleur Bay are exempted when in operation.

36.57 m (20-fathom) shallow water protocol

Vessels engaged in any commercial fishing activity may proceed at a safe operational speed in waters not more than 36.57 m (20 fathom) deep.

If a notice to fish harvesters states that at least one right whale has been detected within a static zone in waters that are not more than 36.57 m deep, the 10 knots speed limit will apply to all vessels above 13 m in length overall (LOA) 15 days after the day on which the notice comes into effect.

If a new notice to fish harvesters with the same statement is published or broadcast during the last seven days of the 15-day period, the speed limit will continue to apply for a further 15 days after the day on which the new notice comes into effect.

Coordinates for the northern static zone:

- 50° 20' N 065° 00' W
- 49° 13' N 065° 00' W
- 48° 40' N 064° 13' W
- 48° 40' N 062° 40' W
- 48° 03' N 061° 07.5' W
- 47° 58.1' N 061° 03.5' W
- 48° 00' N 061° 00' W
- 49° 04' N 061° 00' W
- 49° 04' N 062° 00' W
- 49° 43' N 063° 00' W
- 50° 20' N 063° 00' W

Coordinates for the southern static zone:

- 48° 40' N 065° 00' W
- 48° 40' N 062° 40' W
- 48° 03' N 061° 07.5' W
- 47° 58.1' N 061° 03.5' W
- 47° 10' N 062° 30' W
- 47° 10' N 065° 00' W

Dynamic shipping zones

There are five dynamic shipping zones (DSZ) located in the routing systems north and south of Anticosti Island: A, B, C, D and E

Coordinates for the dynamic shipping zones:

Zone A

- 49° 41' N, 065° 00' W
- 49° 20' N, 065° 00' W
- 49° 11' N, 064° 00' W
- 49° 22' N, 064° 00' W

Zone B

- 49° 22' N, 064° 00' W
- 49° 11' N, 064° 00' W
- 48° 48' N, 063° 00' W
- 49° 00' N, 063° 00' W

Zone C

- 49° 00' N, 063° 00' W
- 48° 48' N, 063° 00' W
- 48° 24' N, 062° 00' W
- 48° 35' N, 062° 00' W

Zone D

- 50° 16' N, 064° 00' W
- 50° 00' N, 064° 00' W
- 49° 56' N, 063° 00' W
- 50° 16' N, 063° 00' W

Zone E

- 48° 35' N 062° 00' W
- 48° 24' N 062° 00' W
- 48° 03' N 061° 07.5' W
- 47° 58.1' N 061° 03.5' W
- 48° 00' N 061° 00' W
- 48° 10.5' N 061° 00' W

When the Government of Canada detects a North Atlantic right whale in a dynamic shipping zone:

- All vessels will be notified via a NAVWARN; and
- Vessels above 13 m in length overall (LOA) must proceed at a speed of not more than 10.0 knots over the ground within that zone.

Speed restrictions in the dynamic shipping zones

The detection of North Atlantic right whales in one or more dynamic shipping zone(s), will trigger a speed restriction in the concerned zone(s). The speed restriction in the dynamic shipping zone(s) will be in effect for 15 days from the date of issuance of the NAVWARN. The speed restriction may be extended for an additional 15 days from the date that a new NAVWARN comes into effect, if North Atlantic right whales continue to be detected during the last 7 days of the 15-day slowdown period.

When a NAVWARN is issued implementing a speed restriction in one or more dynamic shipping zone(s), vessels above **13 m** in length (LOA) must not exceed a speed of 10.0 knots over the ground.

Within any zone that is not subject to a speed restriction, mariners may proceed at a safe operational speed. Mariners are encouraged to take into consideration the potential for their vessel striking North Atlantic right whales when considering a “safe operational speed” during navigation.

Seasonal management areas

Seasonal management area 1 (SMA-1) and seasonal management area 2 (SMA-2) are speed restriction areas located north and south of dynamic shipping zone E, respectively.

Within seasonal management areas, vessels above **13 m** in length (LOA):

- must restrict their speed so as not to exceed 10.0 knots over the ground from April 28 to June 29, 2021; and
- are allowed to proceed at a safe operational speed from June 30 to November 15, 2021, unless a North Atlantic right whale is detected. If a whale is detected, a speed restriction of 10.0 knots over the ground will be triggered for 15 days from the date of issuance of the NAVWARN. The speed restriction may be extended for an additional 15 days from the date that a new NAVWARN comes into effect, if North Atlantic right whales continue to be detected during the last 7 days of the 15-day slowdown period.

Coordinates for the SMA-1:

- 49° 04' N 062° 00' W
- 49° 04' N 061° 00' W
- 48° 10.5' N 061° 00' W
- 48° 35' N 062° 00' W

Coordinates for the SMA-2:

- 48° 24' N 062° 00' W
- 48° 03' N 061° 07.5' W
- 47° 58.1' N 061° 03.5' W
- 47° 26.69' N 062° 00' W

Restricted area

In the summer months, an important proportion of the total North Atlantic right whale population gathers for feeding and surface activity near the [Shediac Valley](#). Since this makes the North Atlantic right whale more susceptible to vessel collisions, a mandatory restricted area will be implemented in and near the [Shediac Valley](#) and will come into force once 80% of the restricted area is closed to fishing for the season as per [the Department of Fisheries and Oceans's right whale closure protocol](#). The restricted area will be lifted once the North Atlantic right whale detections decrease in the restricted area or at the latest on August 31, 2021.

The size and location of the area is determined based on historical detection data of North Atlantic right whales. All necessary details can be found in the Interim Order. Triggering and lifting of the restricted area will be communicated to mariners through a NAVWARN and notice to fish harvesters.

Vessels above **13 m** in length (LOA) will be required to:

- avoid the area unless they are part of the exceptions listed in the Interim Order;
- transit the area at a speed not exceeding 8.0 knots over the ground if they are included in the exception list.

The following exceptions will apply to the restricted area. Vessels listed can travel through the area at not more than 8.0 knots over the ground:

- A vessel being used for commercial fishing;
- A vessel being used for fishing under the authority of a licence issued under the Aboriginal Communal Fishing Licences Regulations;
- A vessel being used for research purposes on behalf of the Government of Canada
- A vessel being used as part of the Department of Fisheries and Oceans' Marine Mammal Response Program to assist a marine mammal or sea turtle in distress or to access or retrieve a deceased marine mammal or sea turtle;
- A vessel authorized by the Government of Canada to retrieve or identify the location of abandoned or lost fishing gear;
- A vessel involved in pollution response operations;
- A vessel avoiding immediate or unforeseen danger;

- A vessel being used to conduct geophysical or geotechnical surveys or related activities as part of a project, which the Minister of Fisheries and Oceans has reviewed, to lay electrical or communication cables;
- A vessel involved in research relating to right whales as part of a project that has received funding from the Government of Canada.

The following vessels can travel through the restricted area at a speed over 8.0 knots, but below 10.0 knots over the ground as required by the static speed restriction zone:

- A vessel being used by an employee of the Government of Canada or peace officer who is performing their duties.

The location and size of the restricted area will not be modified during the season.

Coordinates for the restricted area:

- 48°31.8' N 063°39.6' W
- 48°24.72' N 063°17.88' W
- 47°18.84' N 064°10.8' W
- 47°27.18' N 064°30.72' W

Inclement weather exception

Mariners will be notified in advance via a NAVWARN should the speed restriction status change in any zone or area, due to inclement weather.

Within any zone or area that is not subject to a speed restriction due to adverse weather conditions for example, mariners may proceed at a safe operational speed. Mariners are however encouraged to take into consideration the potential for their vessel striking North Atlantic right whales when considering a “safe operational speed” during navigation.

*Non-expected vessels are still prohibited from transiting through the restricted area.

Trial voluntary slowdown in Cabot Strait

To coincide with the North Atlantic right whales entering and exiting the Gulf of St. Lawrence in large numbers, a trial voluntary slowdown is being put in place for the second year in Cabot Strait from April 28 to June 29 2021, and from September 29 to November 15, 2021.

- During these periods, vessels above 13 m in length (LOA) are requested to voluntarily reduce their speed so as to not exceed 10.0 knots over the ground.

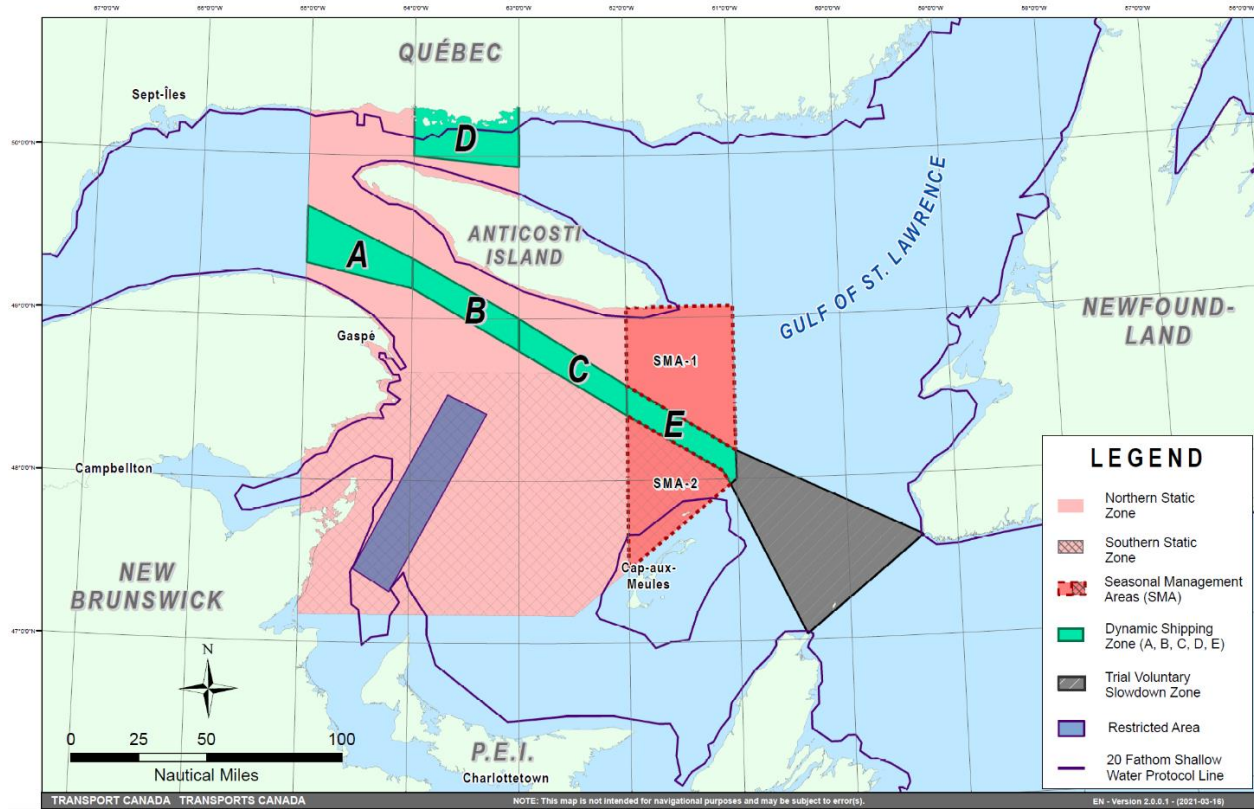
Voluntary slowdown zone coordinates:

- 48° 10.5' N 061° 00' W
- 47° 37.2' N 059° 18.5' W
- 47° 02' N 060° 23.7' W
- 47° 58.1' N 061° 03.5' W
- 48° 00' N 061° 00' W

Map of the Gulf of St. Lawrence

The following map shows

- the static zones, in pink;
- the dynamic shipping zones, in green;
- the seasonal management areas, in dark pink;
- the trial voluntary slowdown zone, in grey;
- the restricted area, in dark blue; and
- the 36.57 m (20 fathom) shallow water protocol line.



Map showing the two static zones (north and south), the five dynamic shipping zones (A, B, C, D and E), the seasonal management areas, the restricted area, the trial voluntary slowdown zone and the 36.57 m (20 fathom) shallow water protocol line.

This map is for visual representation only and is not to be used for navigation or enforcement.

NAVWARN broadcasts

The CCG-MCTS issues and publishes NAVWARNs:

- by radio broadcast; and
- online at [Canada's Maritime Information Portal](#) and its [Navigational Warnings](#) site.

Mariners must ensure they have accurate and up-to-date information about the protection of the North Atlantic right whale, as in all applicable NOTMARs and NAVWARNs.

For the North Atlantic right whale speed restrictions, the NAVWARN(s) currently in effect will be provided to vessels subject to the *Vessel Traffic Services Zone Regulations* or the *Eastern Canada Vessel Traffic Services Zone Regulations*:

Outbound vessels

- at Calling-in-Point 10 (St-Laurent); or
- upon a departure downstream from the Quebec pilot station (including the Saguenay River, Chaleur Bay, Miramichi Bay, etc.)

Inbound vessels

- when a clearance to enter Canadian waters is granted

Vessels in transit

- at the last reporting point prior to entering the mandatory speed restriction zones; and/or
- at 10 nautical miles prior to entering the mandatory speed restriction zones

For those vessels not subject to the above-mentioned regulations, vessel operators are required to monitor broadcasts by the Canadian Coast Guard's Marine Communications and Traffic Services (MCTS) network for the most up to date information. For marine radio frequencies and broadcast times, information may be found in the [Radio Aids to Marine Navigation](#) publication.

Aids to navigation

The Canadian Coast Guard is currently testing virtual Automatic Identification System (AIS) aids to navigation (AIS AtoN) in specific areas, NOTMAR 208(T)/2021 refers. These aids notify mariners of a dynamic shipping zone and/or a seasonal management area subject to a speed restriction.

Each zone is delimited by four to six virtual AIS AtoN, which can be displayed on a ship's navigation equipment, such as

- Electronic Chart Display and Information System (ECDIS);
- Electronic Chart System (ECS);
- RADAR;
- Minimum Keyboard Display (MKD); and
- Electronic Nautical Chart (ENC).

The Canadian Coast Guard broadcasts the virtual AIS AtoN only when a speed restriction is in effect in one or more testing zones.

Mariners must select the virtual AIS AtoN symbol to view a message such as "SectA1 Spd Lim 10 kt." This message refers to a speed restriction in effect for a specific zone.

Note: This system is not the primary method of communicating this information.

Compliance and enforcement

Vessels must comply with the Interim Orders made pursuant to the *Canada Shipping Act, 2001*, and any NAVWARNs broadcast and published by the Canadian Coast Guard relating to the Interim Orders, aimed at regulating the navigation for the purposes of protecting the North Atlantic right whales.

If a vessel does not comply with the Interim Orders or instructions in the NAVWARNs related to the Interim Orders, the vessel could face:

- administrative monetary penalties up to a maximum of CAN \$250,000; and/or
- penal sanctions under the Canada Shipping Act, 2001.

If a vessel appears to have violated the speed restriction, Transport Canada Marine Safety inspectors will review all information provided through AIS and seek an explanation from the master.

No exemptions to the speed restriction will be granted in advance. However, if a deviation from the speed restrictions is necessary for safety reasons, the following information must be entered into the bridge logbook:

- Reason(s) for deviation
- Speed at which vessel is operated
- Latitude and longitude at time of deviation
- Time and duration of deviation
- Master of the vessel shall sign and date the bridge logbook entry

For any deviation, Transport Canada will review and consider reasons such as

- Navigating to ensure vessel safety;
- Weather conditions;
- Force majeure (unforeseeable circumstances); and
- Responding to emergencies.

Report a North Atlantic right whale sighting

When there is a North Atlantic right whale that is entangled, injured or dead, please report it to the nearest Canadian Coast Guard Marine Communications and Traffic Services Centre, or as follows:

Southern part of the Gulf of St. Lawrence

Marine Animal Response Society

Telephone: 1-866-567-6277

Newfoundland and Labrador

Whale Release and Strandings

Telephone: 1-888-895-3003

For the Québec Sector

Marine Mammal Emergencies

Telephone: 1-877-722-5346

If live, free-swimming whales are sighted

- Call 1-902-440-8611 (local) or 1-844-800-8568 (toll free)
- Email: XMARWhalesightings@dfo-mpo.gc.ca

Please consult WhaleMap for the latest right whale observations: <https://whalemap.ocean.dal.ca/>

Saguenay–St. Lawrence Marine Park - Beluga Whale Protection: Slowdown Area at the Mouth of the Saguenay Fjord and Area Closure at Baie Sainte-Marguerite

(Recurrent publication of notice *406/21, originally published in the *Notices to Mariners – Monthly Eastern Edition 04/2021* publication.)

The Saguenay–St. Lawrence Marine Park and its surrounding area are at the heart of endangered beluga whale critical summer habitat. Marine mammal protection measures have been put in place in accordance with the *Marine Activities in the Saguenay–St. Lawrence Marine Park Regulations* within the limits of the Marine Park.

However, important feeding, calving and rearing areas for beluga whales require greater protection to ensure the recovery of the species. The portion of the Saguenay situated between the mouth of the Fjord and Baie Sainte-Marguerite is one of the areas most used by females and their young from May to October. The mouth of the Saguenay is known as a feeding ground and Baie Sainte-Marguerite as a calving and rearing area.

In order to prevent collisions with beluga whales, a compulsory 15-knot slowdown area is in effect from May 1st to October 31st at the mouth of the Saguenay. To ensure tranquility for female belugas and their young during the critical calving period, access to Baie Sainte-Marguerite is prohibited to all vessels from June 21st to September 21st, except for special authorizations (see description below).

For safety reasons, *the slowdown area measure at the mouth of the Saguenay Fjord does not apply* to cargo ships (see the monthly edition of *Notices to Mariners* from May to October for voluntary protection measures in the St. Lawrence Estuary). An enhanced vigilance is, however, recommended to all navigators between the mouth of the Saguenay Fjord and Baie Sainte-Marguerite for the protection of beluga whales.

For more information on the Saguenay–St. Lawrence Marine Park, see notice 5C of the *Notices to Mariners Annual Edition 2021* or visit marinepark.qc.ca.

REGULATORY PROTECTION MEASURES — BELUGA WHALE

Entire Marine Park Territory:

- When beluga whales are less than half a nautical mile (926 metres) from a motorized vessel, the vessel must maintain a speed of between 5 and 10 knots.
- All vessels, including human-powered vessels (kayaks and canoes), must continue to move forward and maintain their heading.
- All vessels must maintain a minimum distance of 400 metres from beluga whales at all times.

For more information concerning the regulations, consult: marinepark.ca/protect/#regulations.

Mouth of the Saguenay Fjord (Figure 1) — Slowdown Area (area crosshatched in red):

- Maximum speed at the mouth of the Saguenay between buoys S7 and S8 and the ferry docks between Baie-Sainte-Catherine and Tadoussac is 15 knots from May 1st to October 31st.

Baie Sainte-Marguerite (Figure 2) — Area Closure (red area):

- From June 21st to September 21st, vessels must not enter the red area, which follows a line between Cap Nord-Ouest and Cap Sainte-Marguerite.
- Special authorizations are granted only for kayaks, canoes and recreational fishermen who must travel without stopping along a corridor within 10 metres of the shore or in shallow areas.

VOLUNTARY PROTECTION MEASURES

Baie Sainte-Marguerite sector (Figure 2) — Transit Area (area crosshatched in yellow):

- From June 21st to September 21st, navigation in this area is recommended at a speed of between 5 and 10 knots without stopping.

The purpose of this transit area is to favour respect of the *Marine Activities in the Saguenay–St. Lawrence Marine Park Regulations*, since beluga whales are often present in the Baie Sainte-Marguerite sector.

INFORMATION

All incidents, including collisions with whales, must be reported without delay by dialling 1-866-508-9888. For any other situation concerning a marine mammal that is either dead or in trouble, contact the emergency network at 1-877-722-5346, or use VHF channel 16.

Figure 1

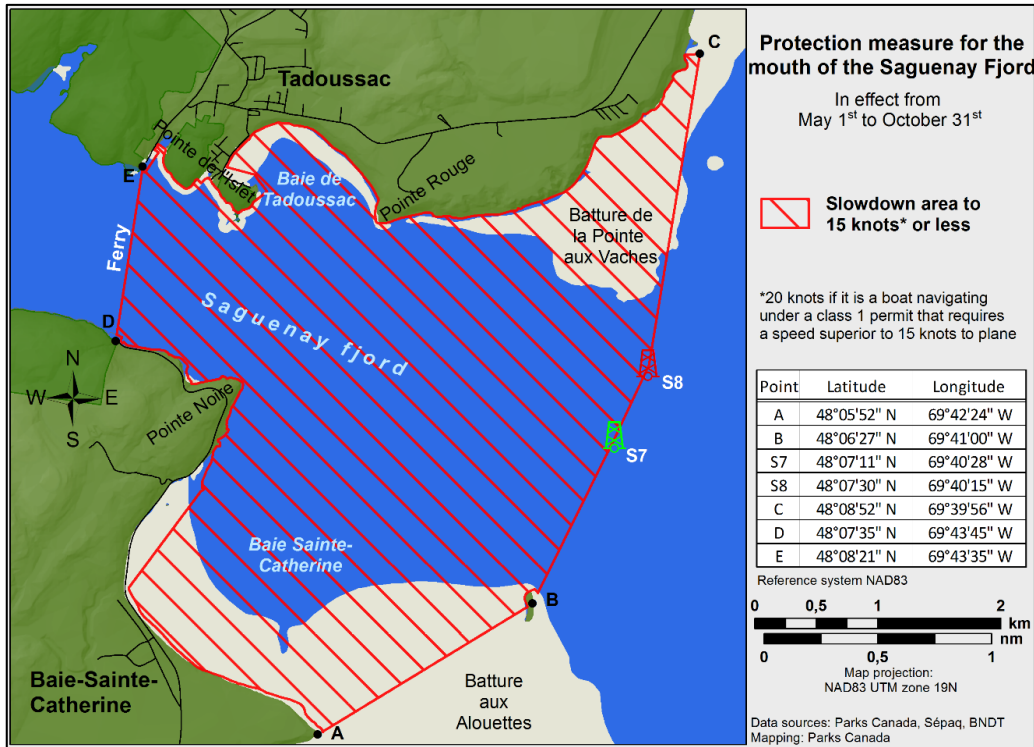
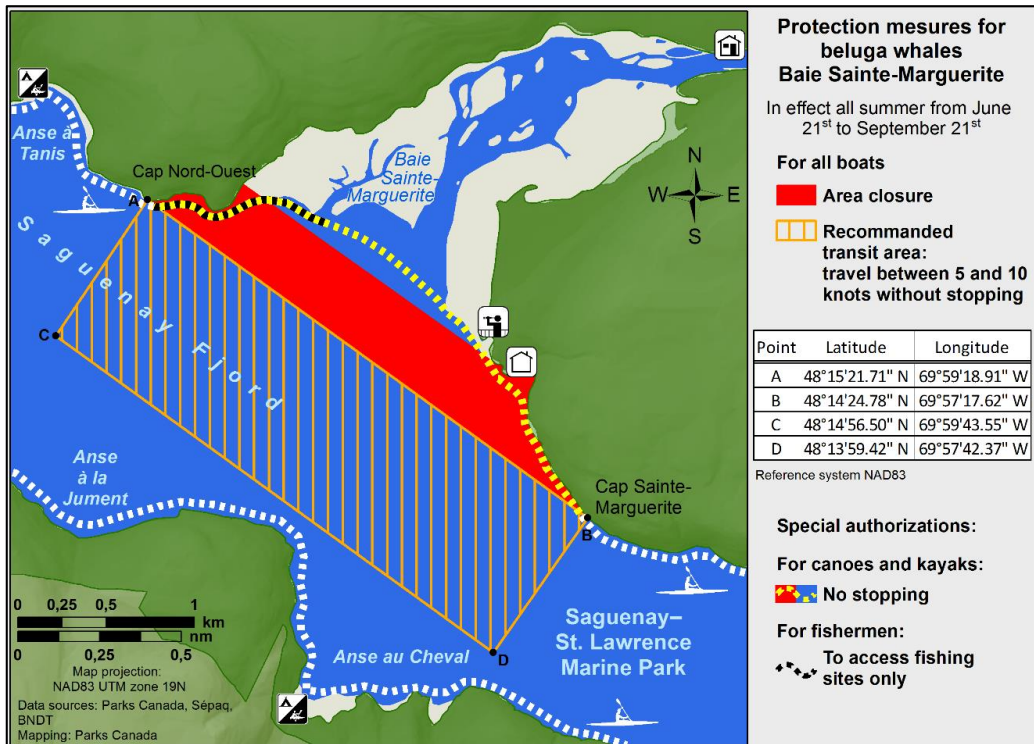


Figure 2



Saguenay-St. Lawrence Marine Park and Surrounding Waters – Whale Protection

(Recurrent publication of notice *407/21, originally published in the *Notices to Mariners – Monthly Eastern Edition 04/2021* publication.)

The waters in and around the Saguenay–St. Lawrence Marine Park are well known for the resident endangered beluga population and the wide diversity of whales that migrate there to feed, particularly between April and November.

REGULATORY PROTECTION MEASURES

All whale species that are found in the St. Lawrence are protected under the *Marine Mammal Regulations*, pursuant to the *Fisheries Act*. Within the boundaries of the Marine Park, specific measures are set out in the *Marine Activities in the Saguenay–St. Lawrence Marine Park Regulations*, pursuant to the establishment of the *Saguenay–St. Lawrence Marine Park Act*. Any collision with a marine mammal within the Marine Park must immediately be reported to a park warden at 1-866-508-9888. For collisions that occur outside the Marine Park or for any situation involving a marine mammal that is dead or in trouble, contact the emergency network at 1-877-722-5346 or on VHF channel 16.

For more information on the Saguenay–St. Lawrence Marine Park, see notice 5C of the *Notices to Mariners Annual Edition 2021*.

VOLUNTARY PROTECTION MEASURES

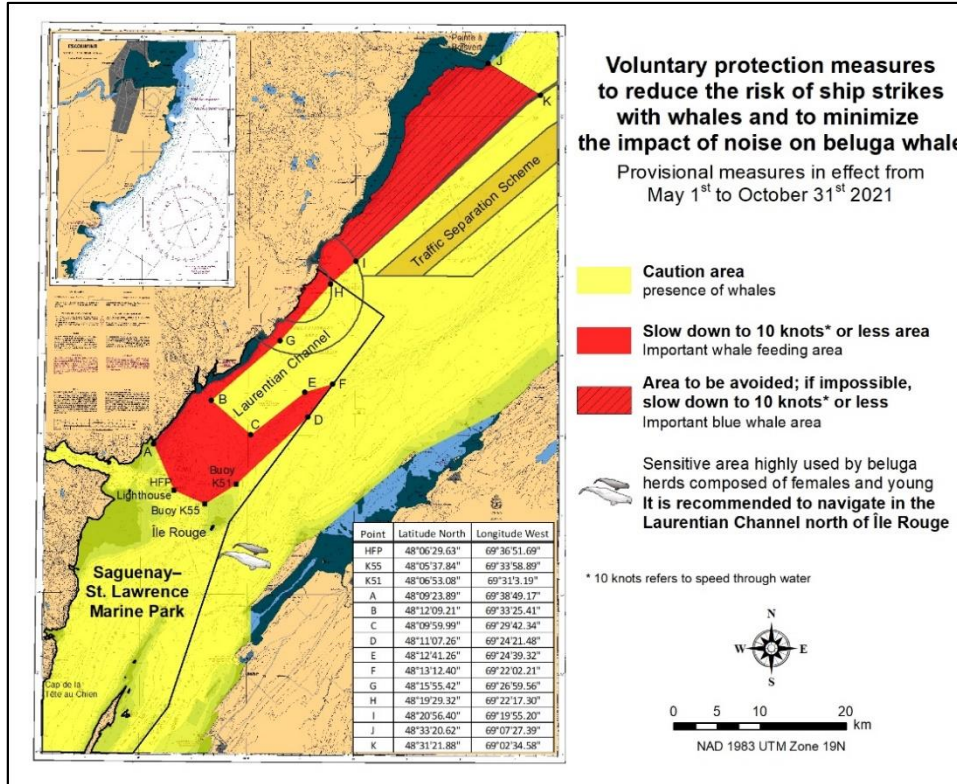
Provisional measures in effect from May 1 to October 31, 2021. See map at the end of this notice.

These measures apply to merchant vessels and cruise ships between Pointe à Boisvert and Cap de la Tête au Chien to prevent collisions with whales. These measures should only be taken when they will not jeopardize navigational safety.

Caution area (yellow area): To reduce the risk of collisions with whales that can be present anywhere in this area, heightened vigilance of navigators is critical. Posting a lookout is recommended in order to increase the chances of seeing the whales and thus taking necessary measures to avoid them. If bypassing the whales is not possible, slow down and wait for the animals to move away to a distance greater than 400 metres (0.215 nautical miles) before resuming original speed. It is more difficult to see the animals at night therefore increased caution is recommended.

Slow down to 10 knots or less area (red area): To reduce the risk of collisions with whales in this feeding area, it is recommended that vessels slow down to a maximum speed through the water of 10 knots and post a lookout. It is further recommended to remain in the Laurentian Channel to the north of Île Rouge to minimize the impact of noise in a sensitive area south of this island, which is highly frequented by herds of beluga whales composed of females and young.

Area to be avoided (hatched red area): To reduce noise and the risk of collisions with whales, vessels should avoid transiting through this area which is highly frequented by blue whales, an endangered species. If the area cannot be avoided, slow down to a speed through the water of 10 knots or less.



***901/21 Canadian Hydrographic Service – Electronic Navigational Charts**

S-57 ENC Number	Chart Title	ENC Compilation Scale	Published
New Charts			
CA373524 (Edn 1.000)	Kuujuarapik	1:37 500	2021-09-17
New Editions			
CA470756 (Edn 3.000)	Halibut Bank to/à Ballenas Channel	1:15 000	2021-09-17
CA473300 (Edn 8.000)	Lac St-Louis au/to Lac St-Francois	1:12 500	2021-09-10
CA573386 (Edn 3.000)	Baie Saint-François	1:6 000	2021-09-10
CA576124 (Edn 6.000)	Port de Grave	1:2 500	2021-09-10
CA579157 (Edn 2.000)	Carillon à/to L'Original	1:10 000	2021-09-24

***902/21 Transport Canada – Ship Safety Bulletin #14/2021**

A new **Ship Safety Bulletin** has recently been posted on the [Transport Canada website](https://www.tc.gc.ca/transport-canada-website).

To view or download this bulletin, please click on the link below:

**[SSB#14/2021](#) – Update to the Small Vessel Compliance Program for Fishing Vessels not more than 15 Gross Tonnage
RDIMS#17825880**

Sign up for [e-Bulletin](#) to receive an e-mail notice each time a new Ship Safety Bulletin is published on our website.

Contact us at marinesafety-securitemaritime@tc.gc.ca or 1-855-859-3123 (Toll Free).

***904/21 Adolphus Reach to/à Big Bay – Private Light Buoys Permanently Established**

Reference chart: 2019

The following private yellow buoys with yellow flashing lights have been permanently established to measure turbidity :

Aid Name	Position
Buoy 1:	44° 02' 01.3"N 077° 08' 07.1"W
Buoy 2:	44° 02' 21.2"N 077° 07' 33.9"W

(NW-C-0526-21)

***905/21 Rivière Ristigouche / Restigouche River – Unlit Buoys Repositioned**

Reference Chart: 4426

The following unlit buoys have been repositioned:

Aid Name	LL #	Position
Baie D'Escuminac buoy EV6	6349	48° 05' 35.7"N 066° 25' 13.5"W
Anse Busteed buoy EV20	6359	48° 03' 02.5"N 066° 32' 58.3"W

(G2021-118, 128)

Section 1A: Temporary and Preliminary Notices

Reminder – Comment Period for Active Preliminary Notices

This is a reminder that the comment period is still open for the following active Preliminary notices:

Notice #	Reference Chart #	Aids Affected (LL #)	Intent of Notice
Atlantic Coast			
806(P)/21	4118	5220.5, 5251.6	Notice of Proposed Changes
807(P)/21	4236	5565.02, 5565.03, 5565.04, 5565.05	Notice of Proposed Changes
808(P)/21	4379	408.5	Notice of Proposed Changes
809(P)/21	4394	LIST	Notice of Proposed Changes

Please refer to the [Notices to Mariners - Monthly Summary of Temporary and Preliminary Notices](#) publication for details.

Newfoundland and Labrador Coast

Temporary Notices

No notices applicable for this edition.

Preliminary Notices

Atlantic Region

Comment Submission

Comments on proposed changes in preliminary (P) notices are solicited from mariners and other interested parties within three months of the initial publication date. Following this date, the notices will be cancelled. Any objections raised must state the facts on which they are based and should include supporting information on safety, commerce and public benefit.

Comments should be directed to the following:

Superintendent,
Aids to Navigation & Waterways
Canadian Coast Guard, Atlantic Region
P.O. Box 1236
Unit 2 – 185 John Yeo Drive
Charlottetown, PE C1A 7M8
Telephone: (902) 566-7936
Email: claire.maclaren@dfo-mpo.gc.ca

***906(P)/21 Cape St Francis to / à Baccalieu Island and / et Heart's Content – Fog Signal to be Discontinued**

Reference chart: 4850

The Canadian Coast Guard proposes to permanently discontinue the fog signal and reduce the light intensity on the following aid to navigation:

Aid Name	LL #	Position
Baccalieu Island Southwest Point Light Station and Fog Signal	473	48° 06' 26.0"N 052° 48' 39.1"W

The light and structure will remain.

Initial publication date: Friday, September 24, 2021

[Comment submission deadline](#): Thursday, December 30, 2021

(N2021-169)

Atlantic Coast

No notices applicable for this edition.

Inland Waters

Temporary Notices

***907(T)/21 Lac des Deux Montagnes – Missing Unlit Buoy**

Reference chart: 1510

The following unlit buoy is currently missing and will not be replaced before the 2022 navigation season:

Aid Name	LL #	Position
Chenal Saint-Placide buoy HJ17	6251.68	45° 31' 20.7"N 074° 12' 25.1"W

(NW-Q-1526-20)

Preliminary Notices

Central Region

Comment Submission

Comments on proposed changes in preliminary (P) notices are solicited from mariners and other interested parties within three months of the initial publication date. Following this date, the notices will be cancelled. Any objections raised must state the facts on which they are based and should include supporting information on safety, commerce and public benefit.

Comments should be directed to the following:

Superintendent, Mathieu Roy
Aids to Navigation & Waterways
Canadian Coast Guard, Central Region
1550 D'Estimauville Avenue
Québec, QC G1J 5E9
Telephone: (418) 648-7450
Email: mathieu.roy@dfo-mpo.gc.ca

***908(P)/21 Restoule River – Aid to Navigation to be Discontinued**

Reference chart: N/A

The Canadian Coast Guard proposes to permanently discontinue the following aid to navigation:

Aid Name	LL #	Position
Restoule River Entrance	1408	46° 02' 01.2"N 079° 43' 23.9"W

Initial publication date: Friday, September 24, 2021

[Comment submission deadline](#): Thursday, December 30, 2021

(D2021-033)

Section 2: Chart Corrections

1312 - Lac Saint-Pierre - New Edition - 10-MAY-2019 - NAD 1983

24-SEP-2021

LNMD. 26-FEB-2021

Replace red starboard hand spar buoy, marked S58 with red starboard hand lighted spar buoy Fl R, marked S58 (See Chart No. 1, Qf)
This notice affects Electronic Navigational Chart: CA479129
(Q2020237) LL(2135) DFO(6410548-01)

Delete depth of 14 metres 9 decimetres (See Chart No. 1, I10)
This notice affects Electronic Navigational Chart: CA479129
DFO(6410633-01)

Add depth of 13 metres 2 decimetres (See Chart No. 1, I10)
This notice affects Electronic Navigational Chart: CA479129
DFO(6410633-02)

1313 - Batiscan au/to Lac Saint-Pierre - New Edition - 08-MAR-2019 - NAD 1983

24-SEP-2021

LNMD. 09-APR-2021

Delete depth of 14 metres 9 decimetres (See Chart No. 1, I10)
This notice affects Electronic Navigational Chart: CA479129
DFO(6410633-01)

Add depth of 13 metres 2 decimetres (See Chart No. 1, I10)
This notice affects Electronic Navigational Chart: CA479129
DFO(6410633-02)

1438 - Grindstone Island to/à Carleton Island - New Edition - 31-AUG-2012 - World Geodetic System 1984

17-SEP-2021

LNMD. 27-AUG-2021

Replace NOTE SUR LA VITESSE N°2 Les vitesses maximales SUR LE FOND, en NOEUDS est 13 noeuds entre le feu 227 et Tibbets Point. Cette zone est patrouillée par les bateaux de United States Coast Guard. En cas d'urgence ils assureront le contrôle de la circulation.
TO READ NOTE SUR LA VITESSE N°2 Vitesse de 9,5 Nœuds PAR RAPPORT AU FOND dans le Canadian Middle Channel et les eaux adjacentes de l'île Ironsides, jusqu'à l'intersection avec le chenal profond au Nord de l'île Wolfe.
DFO(6604803-01)

1510 - Laval à/to Baie de Vaudreuil - A-B - Sheet/Feuille 2 - New Edition - 25-OCT-2019 - NAD 1983

17-SEP-2021

Delete Note ÉCLUSES/ LOCKS (See Chart No. 1, A14)
upper NIVEAU DE L'EAU / WATER LEVEL notes of Title block of chart, SHEET 1 OF 2
DFO(6410603-03)

Affix patch
upper NIVEAU DE L'EAU / WATER LEVEL notes of Title block of chart, SHEET 1 OF 2
Download Patch - https://www.notmar.gc.ca/chsftp/patches/1510_6410603_4_202108240948.pdf
This notice affects Electronic Navigational Chart: CA479228
DFO(6410603-04)

1514 - Carillon à/to L'Original - Sheet/Feuille 1 - New Edition - 22-APR-2016 - NAD 1983

17-SEP-2021

LNWD. 24-JUL-2020

Delete Note ÉCLUSES/ LOCKS 45°35'07.8"N 074°23'31.3"W
(See Chart No. 1, A14)
DFO(6410603-01)

Affix patch 45°35'07.8"N 074°23'31.3"W
Download Patch - https://www.notmar.gc.ca/chsftp/patches/1514_6410603_2_202108200645.pdf
This notice affects Electronic Navigational Chart: CA579157
DFO(6410603-02)

2085 - Toronto Harbour - New Edition - 04-MAR-2011 - NAD 1983

24-SEP-2021

LNWD. 20-DEC-2019

Delete orange and white mooring can buoy, marked LYMAN DAVIS 43°36'07.9"N 079°24'59.7"W
(See Chart No. 1, Q40)
This notice affects Electronic Navigational Chart: CA573008
DFO(6604804-01)

Add wreck, least depth unknown 43°36'07.9"N 079°24'59.7"W
(See Chart No. 1, K29)
This notice affects Electronic Navigational Chart: CA573008
DFO(6604804-02)

2242 - Giants Tomb Island to/à Franklin Island - New Chart - 07-JAN-2005 - NAD 1983

03-SEP-2021

LNWD. 01-JUL-2016

Add obstruction with known depth of 5.8 metres 45°24'44.6"N 080°29'20.2"W
(See Chart No. 1, K41)
This notice affects Electronic Navigational Chart: CA373311
DFO(6604795-09)

Add obstruction with known depth of 5.9 metres 45°24'00.9"N 080°32'37.3"W
(See Chart No. 1, K41)
This notice affects Electronic Navigational Chart: CA373311
DFO(6604795-14)

2243 - Bateau Island to/à Byng Inlet - New Edition - 30-AUG-1985 - NAD 1927

03-SEP-2021

LNWD. 01-JUL-2016

Delete depth of 34 feet 45°24'41.3"N 080°29'19.7"W
(See Chart No. 1, I10)
DFO(6604795-01)

Delete depth of 13 feet 45°45'41.3"N 080°41'12.1"W
(See Chart No. 1, I10)
DFO(6604795-02)

Delete depth of 43 feet 45°31'15.5"N 080°34'36.5"W
(See Chart No. 1, I10)
DFO(6604795-03)

Delete depth of 25 feet 45°30'17.8"N 080°34'29.7"W
(See Chart No. 1, I10)
DFO(6604795-04)

Delete depth of 22 feet 45°24'18.2"N 080°32'47.5"W
(See Chart No. 1, I10)
DFO(6604795-05)

Delete	depth of 34 feet (See Chart No. 1, I10)	45°43'51.6"N 080°44'10.7"W <i>DFO(6604795-06)</i>
Delete	depth of 28 feet (See Chart No. 1, I10)	45°24'59.2"N 080°26'16.5"W <i>DFO(6604795-07)</i>
Delete	depth of 10 feet (See Chart No. 1, I10)	45°27'06.5"N 080°27'18.6"W <i>DFO(6604795-08)</i>
Add	obstruction with known depth of 19 feet (See Chart No. 1, K41) This notice affects Electronic Navigational Chart: CA373311	45°24'44.5"N 080°29'20.7"W <i>DFO(6604795-09)</i>
Add	obstruction with known depth of 5 feet (See Chart No. 1, K41) This notice affects Electronic Navigational Chart: CA373052	45°45'43.0"N 080°41'10.0"W <i>DFO(6604795-10)</i>
Add	obstruction with known depth of 16 feet (See Chart No. 1, K41) This notice affects Electronic Navigational Chart: CA373053	45°31'14.7"N 080°34'36.3"W <i>DFO(6604795-11)</i>
Add	obstruction with known depth of 5 feet (See Chart No. 1, K41) This notice affects Electronic Navigational Chart: CA373053	45°30'19.4"N 080°34'26.4"W <i>DFO(6604795-12)</i>
Add	obstruction with known depth of 19 feet (See Chart No. 1, K41) This notice affects Electronic Navigational Chart: CA373053	45°24'19.5"N 080°32'46.7"W <i>DFO(6604795-13)</i>
Add	obstruction with known depth of 19 feet (See Chart No. 1, K41) This notice affects Electronic Navigational Chart: CA373311	45°24'00.7"N 080°32'37.8"W <i>DFO(6604795-14)</i>
Add	obstruction with known depth of 19 feet (See Chart No. 1, K41) This notice affects Electronic Navigational Chart: CA373052, CA573231	45°43'52.7"N 080°44'13.4"W <i>DFO(6604795-15)</i>
Add	obstruction with known depth of 9 feet (See Chart No. 1, K41) This notice affects Electronic Navigational Chart: CA373311	45°25'01.0"N 080°26'14.4"W <i>DFO(6604795-16)</i>
Add	obstruction with known depth of 3 feet (See Chart No. 1, K41) This notice affects Electronic Navigational Chart: CA373053	45°27'06.5"N 080°27'19.5"W <i>DFO(6604795-17)</i>

2244 - Alexander Passage to/à Beaverstone Bay - New Edition - 03-NOV-2000 - NAD 1983

		LNMD. 07-JUN-2013
03-SEP-2021		
Delete	depth of 13 feet (See Chart No. 1, I10)	45°45'41.2"N 080°41'11.4"W DFO(6604795-02)
Delete	depth of 34 feet (See Chart No. 1, I10)	45°43'51.8"N 080°44'10.3"W DFO(6604795-06)
Add	obstruction with known depth of 5 feet (See Chart No. 1, K41) This notice affects Electronic Navigational Chart: CA373052	45°45'43.1"N 080°41'09.5"W DFO(6604795-10)
Add	obstruction with known depth of 19 feet (See Chart No. 1, K41) This notice affects Electronic Navigational Chart: CA373052, CA573231	45°43'52.9"N 080°44'12.9"W DFO(6604795-15)

2261 - Bayfield to/à Douglas Point - Sheet/Feuille 1 - New Edition - 20-MAY-2016 - World Geodetic System 1984

10-SEP-2021		
Delete	private light F G (See Chart No. 1, P1) This notice affects Electronic Navigational Chart: CA373248	44°18'56.9"N 081°36'19.0"W DFO(6604796-01)

2282 - Lion's Head Harbour - New Edition - 07-JUN-1996 - NAD 1983

24-SEP-2021		LNMD. 28-AUG-2020
Reposition	light, marked Iso (See Chart No. 1, P1) This notice affects Electronic Navigational Chart: CA373286	from 44°59'26.0"N 081°14'53.3"W to 44°59'25.9"N 081°14'53.6"W (D2021013) LL(825) DFO(6604749-01)

2282 - Owen Sound to/à Cabot Head - New Edition - 07-JUN-1996 - NAD 1983

24-SEP-2021		LNMD. 28-AUG-2020
Reposition	light, marked Iso (See Chart No. 1, P1) This notice affects Electronic Navigational Chart: CA373286	from 44°59'24.5"N 081°14'50.9"W to 44°59'25.9"N 081°14'53.6"W (D2021013) LL(825) DFO(6604749-01)

2291 - Point Clark to/à Southampton - New Edition - 31-MAR-2000 - NAD 1983

10-SEP-2021		LNMD. 10-OCT-2014
Delete	private light F G (See Chart No. 1, P1) This notice affects Electronic Navigational Chart: CA373248	44°18'56.9"N 081°36'19.0"W DFO(6604796-01)
Delete	private front range/leading light F R (See Chart No. 1, P20.2) This notice affects Electronic Navigational Chart: CA373248	44°20'28.1"N 081°34'43.2"W DFO(6604796-02)
Delete	rear range/leading light F R with leading line and bearing 002° / 182° (See Chart No. 1, P20.1, P20.2, Pe) This notice affects Electronic Navigational Chart: CA373248	44°20'22.6"N 081°34'43.5"W DFO(6604796-03)

2293 - Byng Inlet and Approaches / et les approches - New Edition - 30-MAR-2001 - NAD 1983

03-SEP-2021 LNMD. 07-JUN-2013
Add obstruction with known depth of 19 feet 45°43'52.9"N 080°44'12.9"W
(See Chart No. 1, K41)
This notice affects Electronic Navigational Chart: CA373052, CA573231
DFO(6604795-15)

4000 - Gulf of Maine to/à Baffin Bay / Baie de Baffin - New Edition - 25-JUL-2003 - NAD 1983

03-SEP-2021 LNMD. 23-JUL-2021
Delete lighted offshore platform, marked Deep Panuke 43°49'43.0"N 060°39'10.0"W
(See Chart No. 1, L10, P2)
This notice affects Electronic Navigational Chart: CA176140, CA376137
DFO(6309650-02)

4001 - Gulf of Maine to Strait of Belle Isle / au Detroit de Belle Isle - New Edition - 01-DEC-1995 - NAD 1983

03-SEP-2021 LNMD. 23-JUL-2021
Delete lighted offshore platform, marked Deep Panuke 43°48'50.0"N 060°41'00.0"W
(See Chart No. 1, L10, P2)
This notice affects Electronic Navigational Chart: CA176140, CA376137
DFO(6309650-02)

Replace pipeline, Gas/Gaz with abandoned pipeline between 44°10'14.0"N 060°56'18.0"W
(See Chart No. 1, L40.1, L44) and 43°48'50.0"N 060°41'00.0"W
This notice affects Electronic Navigational Chart: CA376137
DFO(6309650-16)

4003 - Cape Breton to /à Cape Cod - New Edition - 21-MAR-2003 - NAD 1983

03-SEP-2021 LNMD. 28-AUG-2020
Delete lighted offshore platform Mo(U), marked Deep Panuke 43°49'00.0"N 060°41'00.0"W
(See Chart No. 1, L10, P2)
This notice affects Electronic Navigational Chart: CA176140, CA376137
DFO(6309650-02)

Delete legend Fog Sig 43°49'00.0"N 060°41'00.0"W
(See Chart No. 1, R1)
This notice affects Electronic Navigational Chart: CA176140, CA376137
DFO(6309650-03)

4006 - Newfoundland and Labrador/Terre-Neuve-et-Labrador to Bermuda / aux Bermudes - New Edition - 08-AUG-2003 - NAD 1983

03-SEP-2021 LNMD. 23-JUL-2021
Delete lighted offshore platform, marked Deep Panuke 43°48'45.0"N 060°41'36.0"W
(See Chart No. 1, L10, P2)
This notice affects Electronic Navigational Chart: CA176140, CA376137
DFO(6309650-02)

4016 - Saint-Pierre to /à St. John's - New Edition - 06-JUN-2003 - NAD 1983

24-SEP-2021 LNMD. 18-SEP-2020
Delete light FI R 46°57'19.0"N 055°14'10.0"W
(See Chart No. 1, P1)
This notice affects Electronic Navigational Chart: CA276091, CA376176
(N2021115) LL(72) DFO(6309604-01)

4047 - St. Pierre Bank / Banc de Saint-Pierre to / au Whale Bank / Banc de la Baleine - New Edition - 09-OCT-1998 - NAD 1983		
24-SEP-2021		LNMD. 02-OCT-2020
Delete	light Fl R (See Chart No. 1, P1) This notice affects Electronic Navigational Chart: CA276091, CA376176	46°57'15.0"N 055°14'00.0"W (N2021115) LL(72) DFO(6309604-01)
4099 - Sable Island / Île de Sable: Western Portion / Partie Ouest - New Edition - 28-DEC-2001 - NAD 1983		
03-SEP-2021		LNMD. 29-MAY-2020
Delete	private yellow ODAS/SADO lighted spherical buoy Fl(5) Y 20s (See Chart No. 1, Q58) This notice affects Electronic Navigational Chart: CA376137	43°48'06.5"N 060°39'07.0"W DFO(6309650-01)
Delete	lighted offshore platform Mo(U) 15m, marked Deep Panuke (See Chart No. 1, L10, P2) This notice affects Electronic Navigational Chart: CA176140, CA376137	43°48'45.6"N 060°41'17.8"W DFO(6309650-02)
Delete	legend Fog Sig (3) 30s (See Chart No. 1, R1) This notice affects Electronic Navigational Chart: CA176140, CA376137	43°48'45.6"N 060°41'17.8"W DFO(6309650-03)
Delete	safety zone (See Chart No. 1, L3) This notice affects Electronic Navigational Chart: CA376137	joining 43°46'52.6"N 060°45'50.0"W 43°49'59.0"N 060°36'59.0"W 43°51'43.0"N 060°36'27.0"W 43°48'08.8"N 060°45'25.0"W and 43°46'52.6"N 060°45'50.0"W DFO(6309650-04)
Delete	suspended well, with known depth over wellhead of 25 metres (See Chart No. 1, L21.2) This notice affects Electronic Navigational Chart: CA376137	43°47'21.5"N 060°45'20.0"W DFO(6309650-05)
Delete	suspended well, depth over wellhead unknown (See Chart No. 1, L21.1) This notice affects Electronic Navigational Chart: CA376137	43°48'40.6"N 060°43'57.3"W DFO(6309650-06)
Delete	suspended well, with known depth over wellhead of 35 metres (See Chart No. 1, L21.2) This notice affects Electronic Navigational Chart: CA376137	43°48'48.7"N 060°41'47.2"W DFO(6309650-07)
Delete	suspended well, with known depth over wellhead of 31 metres (See Chart No. 1, L21.2) This notice affects Electronic Navigational Chart: CA376137	43°49'17.0"N 060°40'17.0"W DFO(6309650-08)
Delete	suspended well, with known depth over wellhead of 30 metres (See Chart No. 1, L21.2) This notice affects Electronic Navigational Chart: CA376137	43°49'24.5"N 060°39'52.0"W DFO(6309650-09)

Delete	suspended well, with known depth over wellhead of 33 metres (See Chart No. 1, L21.2) This notice affects Electronic Navigational Chart: CA376137	43°50'10.0"N 060°37'19.0"W <i>DFO(6309650-10)</i>
Replace	pipeline with an abandoned pipeline (See Chart No. 1, L40.1, L44) This notice affects Electronic Navigational Chart: CA376137	between 43°48'42.8"N 060°41'14.0"W and 43°50'09.6"N 060°37'18.6"W <i>DFO(6309650-11)</i>
Delete	pipeline (See Chart No. 1, L40.1) This notice affects Electronic Navigational Chart: CA376137	between 43°48'44.1"N 060°41'14.3"W and 43°49'24.6"N 060°39'52.4"W <i>DFO(6309650-12)</i>
Replace	pipeline with abandoned pipeline (See Chart No. 1, L40.1, L44) This notice affects Electronic Navigational Chart: CA376137	between 43°48'44.1"N 060°41'14.3"W and 43°49'17.0"N 060°40'17.0"W <i>DFO(6309650-13)</i>
Delete	pipeline (See Chart No. 1, L40.1) This notice affects Electronic Navigational Chart: CA376137	between 43°48'44.1"N 060°41'14.3"W and 43°48'48.5"N 060°41'47.1"W <i>DFO(6309650-14)</i>
Replace	pipeline with abandoned pipeline (See Chart No. 1, L40.1, L44) This notice affects Electronic Navigational Chart: CA376137	joining 43°47'21.2"N 060°45'19.9"W 43°48'11.0"N 060°42'17.7"W and 43°48'44.1"N 060°41'14.3"W <i>DFO(6309650-15)</i>
Replace	pipeline, Gas/Gaz with abandoned pipeline (See Chart No. 1, L40.1, L44) This notice affects Electronic Navigational Chart: CA376137	joining 43°48'45.5"N 060°41'23.7"W 44°06'12.4"N 060°53'38.0"W and 44°07'25.0"N 060°54'57.0"W <i>DFO(6309650-16)</i>

4448 - Port Hood - New Edition - 13-DEC-2002 - NAD 1983
03-SEP-2021

LNWD. 23-JUL-2021

Delete	red starboard hand conical buoy, marked VK14 (See Chart No. 1, Qf) This notice affects Electronic Navigational Chart: CA576661	46°00'31.0"N 061°32'30.3"W <i>(G2021068) DFO(6309496-01)</i>
Delete	green port hand lighted pillar buoy FI G, marked VK7 (See Chart No. 1, Qg) This notice affects Electronic Navigational Chart: CA376242, CA576661	45°59'06.5"N 061°33'19.7"W <i>(G2021082) LL(879.5) DFO(6309513-01)</i>
Add	green port hand lighted spar buoy Q G, marked VK7 (See Chart No. 1, Qg) This notice affects Electronic Navigational Chart: CA376242, CA576661	45°59'06.2"N 061°33'19.6"W <i>(G2021082) LL(879.5) DFO(6309513-02)</i>
Replace	yellow and black South cardinal spar buoy, marked VM with yellow and black South cardinal lighted spar buoy Q(6)+LFI 15s, marked VM (See Chart No. 1, Q130.3) This notice affects Electronic Navigational Chart: CA576661	46°00'23.2"N 061°33'07.6"W <i>(G2021083) LL(882.3) DFO(6309514-01)</i>

4462 - St George's Bay - New Edition - 07-MAR-2003 - NAD 1983

03-SEP-2021

LNMD. 23-JUL-2021

Delete green port hand lighted pillar buoy FIG, marked VK7 45°59'07.4"N 061°33'20.7"W
(See Chart No. 1, Qg)
This notice affects Electronic Navigational Chart: CA376242, CA576661
(G2021082) LL(879.5) DFO(6309513-01)

Add green port hand lighted spar buoy Q G, marked VK7 45°59'06.2"N 061°33'19.6"W
(See Chart No. 1, Qg)
This notice affects Electronic Navigational Chart: CA376242, CA576661
(G2021082) LL(879.5) DFO(6309513-02)

4512 - Quirpon Harbour and Approaches / et les approches - New Edition - 24-JAN-2003 - NAD 1983

17-SEP-2021

LNMD. 25-SEP-2020

Reposition black and yellow North cardinal lighted spar buoy Q, marked KQ from 51°35'16.6"N 055°27'11.9"W
(See Chart No. 1, Q130.3) to 51°35'14.4"N 055°27'12.7"W
(N2021065) LL(237.2) DFO(6309544-01)

4530 - Hamilton Sound: Eastern Portion / Partie-est - New Edition - 15-MAR-2002 - NAD 1983

10-SEP-2021

LNMD. 25-SEP-2020

Amend Fl R to read Fl against light 49°27'36.2"N 053°57'19.7"W
(See Chart No. 1, P1)
This notice affects Electronic Navigational Chart: CA376655, CA476279, CA576504
(N2021049) LL(396.75) DFO(6309530-01)

Amend Oc G to read Fl G against light 49°27'23.1"N 053°56'28.5"W
(See Chart No. 1, P1)
This notice affects Electronic Navigational Chart: CA376655, CA476279
(N2021062) LL(399) DFO(6309541-01)

4587 - Marystown Wharves / Quais - New Edition - 25-JAN-2008 - NAD 1983

03-SEP-2021

LNMD. 31-AUG-2018

Add light Fl Y, Marystown Wharf Light 47°09'56.1"N 055°08'51.6"W
(See Chart No. 1, P1)
This notice affects Electronic Navigational Chart: CA576225
(N2021075) LL(63.55) DFO(6309579-01)

4587 - Mortier Bay - New Edition - 25-JAN-2008 - NAD 1983

03-SEP-2021

LNMD. 31-AUG-2018

Add light Fl Y, Marystown Wharf Light 47°09'56.1"N 055°08'51.6"W
(See Chart No. 1, P1)
This notice affects Electronic Navigational Chart: CA576225
(N2021075) LL(63.55) DFO(6309579-01)

4591 - Pilley's Island Harbour - New Edition - 26-DEC-2003 - NAD 1983

17-SEP-2021

LNMD. 13-MAY-2011

Add green port hand lighted spar buoy Fl G, marked DR1/1 49°29'57.9"N 055°46'30.1"W
(See Chart No. 1, Qg)
(N2021064) LL(341.494) DFO(6309543-01)

4592 - Little Bay Island to / à League Rock - New Edition - 10-OCT-2003 - NAD 1983

10-SEP-2021

LNMD. 24-JUL-2020

Delete red starboard hand lighted spar buoy Fl R, marked DLB2 49°38'13.1"N 055°46'01.8"W
(See Chart No. 1, Qf)
(N2021053) LL(331.9) DFO(6309533-01)

Add black, yellow and black East cardinal lighted spar buoy Q(3)10s, 49°38'11.5"N 055°45'55.6"W
marked DLB
(See Chart No. 1, Q130.3)
This notice affects Electronic Navigational Chart: CA376656
(N2021053) LL(331.9) DFO(6309533-02)

4593 - Sunday Cove Island to / à Thimble Tickles - New Edition - 05-DEC-2003 - NAD 1983

17-SEP-2021 LNMD. 10-MAY-2019
Add green port hand lighted spar buoy FI G, marked DR1/1 49°29'57.9"N 055°46'30.1"W
(See Chart No. 1, Qg)
(N2021064) LL(341.494) DFO(6309543-01)

4616 - Burin Harbours and Approches / et les approches - New Edition - 06-JUN-2003 - NAD 1983

24-SEP-2021 LNMD. 20-MAY-2011
Delete light FIR 6s 85ft 46°57'15.0"N 055°14'02.7"W
(See Chart No. 1, P1)
This notice affects Electronic Navigational Chart: CA276091, CA376176
(N2021115) LL(72) DFO(6309604-01)

4624 - Long Island to / à St. Lawrence Harbours - New Edition - 07-JAN-2000 - NAD 1983

24-SEP-2021 LNMD. 17-JUL-2020
Delete light FI R 46°57'14.5"N 055°14'04.5"W
(See Chart No. 1, P1)
This notice affects Electronic Navigational Chart: CA276091, CA376176
(N2021115) LL(72) DFO(6309604-01)

4663 - Cow Head to / à Pointe Riche - New Edition - 01-AUG-2003 - NAD 1983

24-SEP-2021 LNMD. 10-APR-2020
Add black and yellow North cardinal lighted pillar buoy VQ W, marked XPB 50°44'00.2"N 057°20'37.2"W
(See Chart No. 1, Q130.3)
(N2021072) LL(211.15) DFO(6309549-01)
Delete red starboard hand lighted spar buoy FI R, marked XP2 50°44'14.0"N 057°19'51.0"W
(See Chart No. 1, Qf)
(N2021134) LL(211.5) DFO(6309575-01)
Add red starboard hand lighted pillar buoy FI R, marked XP2 50°44'17.9"N 057°20'04.2"W
(See Chart No. 1, Qf)
(N2021134) LL(211.5) DFO(6309575-02)

4667 - Savage Cove to / à St Barbe Bay - New Edition - 30-MAR-2007 - NAD 1983

17-SEP-2021 LNMD. 23-OCT-2020
Reposition red starboard hand lighted pillar buoy FI R, marked XB2 from 51°12'37.2"N 056°46'57.0"W
(See Chart No. 1, Qf) to 51°12'43.3"N 056°46'56.4"W
This notice affects Electronic Navigational Chart: CA476568
(N2021057) LL(216.1) DFO(6309537-01)

4667 - St. Barbe Wharf and Approches / Quai et Approches - New Edition - 30-MAR-2007 - NAD 1983

17-SEP-2021 LNMD. 23-OCT-2020
Reposition green port hand lighted spar buoy FI G, marked XB3 from 51°12'27.8"N 056°46'17.5"W
(See Chart No. 1, Qg) to 51°12'23.3"N 056°46'15.1"W
This notice affects Electronic Navigational Chart: CA576587
(N2021056) LL(216.12) DFO(6309536-01)

4679 - Hawkes Bay, Port Saunders, Back Arm - New Edition - 29-NOV-2002 - NAD 1983

24-SEP-2021

LNMD. 02-OCT-2020

Add	black and yellow North cardinal lighted pillar buoy VQ W, marked XPB (See Chart No. 1, Q130.3)	50°44'00.2"N 057°20'37.2"W <i>(N2021072) LL(211.15) DFO(6309549-01)</i>
Delete	red starboard hand conical lighted buoy FI R, marked XP4 (See Chart No. 1, Qf)	50°43'16.4"N 057°20'02.2"W <i>(N2021074P) LL(211.7) DFO(6309551-01)</i>
Add	red starboard hand lighted spar buoy Q R, marked XP4 (See Chart No. 1, Qf)	50°43'17.3"N 057°20'01.2"W <i>(N2021074P) LL(211.7) DFO(6309551-02)</i>
Reposition	green port hand lighted spar buoy FI G, marked XP3 (See Chart No. 1, Qg)	from 50°43'09.1"N 057°20'07.9"W to 50°43'07.9"N 057°20'10.5"W <i>(N2021132) LL(211.6) DFO(6309574-01)</i>
Delete	red starboard hand lighted spar buoy FI R, marked XP2 (See Chart No. 1, Qf)	50°44'15.6"N 057°19'56.7"W <i>(N2021134) LL(211.5) DFO(6309575-01)</i>
Add	red starboard hand lighted pillar buoy FI R, marked XP2 (See Chart No. 1, Qf)	50°44'17.9"N 057°20'04.2"W <i>(N2021134) LL(211.5) DFO(6309575-02)</i>

4680 - Hawkes Bay to / à Ste Geneviève Bay including / y compris St. John Bay - New Edition - 07-NOV-2003 - NAD 1983

24-SEP-2021

LNMD. 03-JUL-2020

Add	black and yellow North cardinal lighted pillar buoy VQ W, marked XPB (See Chart No. 1, Q130.3)	50°44'00.2"N 057°20'37.2"W <i>(N2021072) LL(211.15) DFO(6309549-01)</i>
Delete	red starboard hand lighted spar buoy FI R, marked XP2 (See Chart No. 1, Qf)	50°44'14.6"N 057°19'56.0"W <i>(N2021134) LL(211.5) DFO(6309575-01)</i>
Add	red starboard hand lighted pillar buoy FI R, marked XP2 (See Chart No. 1, Qf)	50°44'17.9"N 057°20'04.2"W <i>(N2021134) LL(211.5) DFO(6309575-02)</i>

4701 - Ship Harbour Head to / aux Camp Islands - New Edition - 13-DEC-2002 - NAD 1983

17-SEP-2021

LNMD. 11-MAY-2018

Delete	green port hand lighted pillar buoy FI G, marked NW1 (See Chart No. 1, Qg)	52°31'21.7"N 055°44'21.7"W <i>(N2021066P) LL(270.4) DFO(6309545-01)</i>
Add	black, yellow and black East cardinal lighted pillar buoy Q(3)10s, marked NWW (See Chart No. 1, Q130.3)	52°31'21.7"N 055°44'21.7"W <i>(N2021066P) LL(270.4) DFO(6309545-02)</i>
Replace	black and yellow North cardinal lighted pillar buoy Q, marked NA with green port hand lighted pillar buoy FI G, marked NA1/1 (See Chart No. 1, Q130.3, Qg)	52°30'28.8"N 055°43'50.0"W <i>(N2021097) LL(270.45) DFO(6309571-01)</i>

4820 - Cape Freels to / à Exploits Islands - New Chart - 01-JUL-2005 - NAD 1983

10-SEP-2021

LNMD. 25-SEP-2020

Amend FI R to read FI against light
(See Chart No. 1, P1) 49°27'36.2"N 053°57'19.7"W
This notice affects Electronic Navigational Chart: CA376655, CA476279, CA576504
(N2021049) LL(396.75) DFO(6309530-01)

Amend Oc G to read FI G against light
(See Chart No. 1, P1) 49°27'23.1"N 053°56'28.5"W
This notice affects Electronic Navigational Chart: CA376655, CA476279
(N2021062) LL(399) DFO(6309541-01)

4821 - White Bay and / et Notre Dame Bay - New Chart - 23-APR-2004 - NAD 1983

10-SEP-2021

LNMD. 09-OCT-2020

Add black, yellow and black East cardinal lighted spar buoy Q(3)10s,
marked DLB 49°38'11.5"N 055°45'55.6"W
(See Chart No. 1, Q130.3)
This notice affects Electronic Navigational Chart: CA376656
(N2021053) LL(331.9) DFO(6309533-02)

Add light FI G 49°59'35.0"N 056°20'30.2"W
(See Chart No. 1, P1)
This notice affects Electronic Navigational Chart: CA376656
(N2021063) LL(263.5) DFO(6309542-01)

4822 - Cape St John to / à St Anthony - New Chart - 30-JUN-2006 - NAD 1983

10-SEP-2021

LNMD. 09-OCT-2020

Add light FI G 49°59'35.0"N 056°20'30.2"W
(See Chart No. 1, P1)
This notice affects Electronic Navigational Chart: CA376656
(N2021063) LL(263.5) DFO(6309542-01)

4831 - Fortune Bay: Northern Portion / Partie Nord - New Chart - 26-DEC-1986 - NAD 1983

24-SEP-2021

LNMD. 18-SEP-2020

Add light FI G 47°37'56.3"N 054°53'07.9"W
(See Chart No. 1, P1)
This notice affects Electronic Navigational Chart: CA376316
(N2021078) LL(113.06) DFO(6309554-01)

Add pier between 47°37'55.5"N 054°53'10.5"W
(See Chart No. 1, F14) and 47°37'56.3"N 054°53'07.9"W
This notice affects Electronic Navigational Chart: CA376316
DFO(6309554-02)

4839 - Continuation A - New Edition - 28-JAN-2011 - NAD 1983

17-SEP-2021

LNMD. 30-APR-2021

Delete light FI R 47°52'42.8"N 054°12'03.0"W
(See Chart No. 1, P1)
This notice affects Electronic Navigational Chart: CA476080
(N2021109P) LL(41) DFO(6309584-01)

4843 - Head of / Fond de St Mary's Bay - New Edition - 26-DEC-2003 - NAD 1983

03-SEP-2021

LNWD. 16-JUL-2010

Delete light Fl G 46°57'52.9"N 053°31'46.1"W
(See Chart No.1, P1)
This notice affects Electronic Navigational Chart: CA376293, CA476294
(N2021082) LL(8.21) DFO(6309562-01)

4843 - St Mary's Harbour and Adjacent Anchorages / et mouillages adjacents - New Edition - 26-DEC-2003 - NAD 1983

03-SEP-2021

LNWD. 16-JUL-2010

Delete light Fl G 46°57'52.9"N 053°31'46.1"W
(See Chart No. 1, P1)
This notice affects Electronic Navigational Chart: CA376293, CA476294
(N2021082) LL(8.21) DFO(6309562-01)

4850 - Old Perlican - New Chart - 11-MAY-1990 - NAD 1983

03-SEP-2021

LNWD. 11-DEC-2020

Reposition red starboard hand lighted spar buoy Fl R, marked TP2 from 48°05'22.1"N 053°00'51.0"W
(See Chart No. 1, Qf) to 48°05'33.5"N 053°01'05.2"W
This notice affects Electronic Navigational Chart: CA576147
(N2021076) LL(470.76) DFO(6309552-01)

Reposition green port hand lighted spar buoy Fl G, marked TP3 from 48°05'21.0"N 053°00'47.9"W
(See Chart No. 1, Qg) to 48°05'30.3"N 053°00'57.2"W
This notice affects Electronic Navigational Chart: CA576147
(N2021077) LL(470.75) DFO(6309553-01)

4885 - Port Harmon - New Edition - 08-MAR-2002 - NAD 1983

24-SEP-2021

LNWD. 31-JUL-2020

Amend 10,1m to read 10,1m (2020) 48°31'40.6"N 058°31'39.1"W
(See Chart No. 1, I22)
This notice affects Electronic Navigational Chart: CA576088
DFO(6309614-01)

Amend 10,4m to read 8,6m (2020) 48°30'28.5"N 058°32'25.4"W
(See Chart No. 1, I22)
This notice affects Electronic Navigational Chart: CA576088
DFO(6309614-03)

Amend 10,4m to read 8,6m (2020) 48°31'19.9"N 058°31'50.7"W
(See Chart No. 1, I22)
This notice affects Electronic Navigational Chart: CA576088
DFO(6309614-04)

5032 - Pensons Arm - New Chart - 31-JAN-2003 - NAD 1983

24-SEP-2021

LNWD. 26-MAR-2021

Add red starboard hand lighted spar buoy Q R, marked NMP6 52°41'17.0"N 055°53'13.7"W
(See Chart No. 1, Qf)
This notice affects Electronic Navigational Chart: CA576638
(N2021070) LL(279.287) DFO(6309547-01)

5179 - Alexis Bay - New Edition - 10-OCT-2003 - NAD 1983

17-SEP-2021

LNWD. 11-MAY-2018

Delete green port hand lighted pillar buoy Fl G, marked NW1 52°31'21.7"N 055°44'21.7"W
(See Chart No. 1, Qg)
(N2021066P) LL(270.4) DFO(6309545-01)

Add black, yellow and black East cardinal lighted pillar buoy Q(3)10s, 52°31'21.7"N 055°44'21.7"W
marked NWW
(See Chart No. 1, Q130.3)
(N2021066P) LL(270.4) DFO(6309545-02)

Replace black and yellow North cardinal lighted pillar buoy Q, marked NA with 52°30'28.8"N 055°43'51.0"W
green port hand lighted pillar buoy FI G, marked NA1/1
(See Chart No. 1, Q130.3, Qg)
(N2021097) LL(270.45) DFO(6309571-01)

5179 - Alexis River - New Edition - 10-OCT-2003 - NAD 1983

17-SEP-2021

LNWD. 11-MAY-2018

Add green port hand lighted spar buoy FI G, marked NA13 52°32'26.7"N 056°13'41.3"W
(See Chart No. 1, Qg)
(N2021069) LL(272.7) DFO(6309546-01)

8007 - Halifax to / à Sable Island / Île de Sable, Including / y compris Emerald Bank / Banc d'Émeraude and / et Sable Island Bank / Banc de l'Île de Sable - New Edition - 30-AUG-2002 - NAD 1983

03-SEP-2021

LNWD. 10-JUL-2020

Delete private yellow ODAS/SADO lighted spherical buoy FI(5) Y 20s 43°48'06.8"N 060°39'05.0"W
(See Chart No. 1, Q58)
This notice affects Electronic Navigational Chart: CA376137
DFO(6309650-01)

Delete lighted offshore platform Mo(U) 15m, marked Deep Panuke 43°48'45.0"N 060°41'15.0"W
(See Chart No. 1, L10, P2)
This notice affects Electronic Navigational Chart: CA176140, CA376137
DFO(6309650-02)

Delete legend Fog Sig 43°48'45.0"N 060°41'15.0"W
(See Chart No. 1, R1)
This notice affects Electronic Navigational Chart: CA176140, CA376137
DFO(6309650-03)

Delete safety zone 43°46'52.6"N 060°45'50.0"W
(See Chart No. 1, L3) 43°49'59.0"N 060°36'59.0"W
43°51'43.0"N 060°36'27.0"W
43°48'08.8"N 060°45'25.0"W
and 43°46'52.6"N 060°45'50.0"W
This notice affects Electronic Navigational Chart: CA376137
DFO(6309650-04)

Delete suspended well, depth over wellhead unknown 43°47'21.5"N 060°45'16.0"W
(See Chart No. 1, L21.1)
This notice affects Electronic Navigational Chart: CA376137
DFO(6309650-05)

Delete suspended well, depth over wellhead unknown 43°48'42.0"N 060°44'04.0"W
(See Chart No. 1, L21.1)
This notice affects Electronic Navigational Chart: CA376137
DFO(6309650-06)

Delete suspended well, depth over wellhead unknown 43°48'49.0"N 060°41'42.0"W
(See Chart No. 1, L21.1)
This notice affects Electronic Navigational Chart: CA376137
DFO(6309650-07)

Delete	suspended well, depth over wellhead unknown (See Chart No. 1, L21.1) This notice affects Electronic Navigational Chart: CA376137	43°49'17.0"N 060°40'15.0"W <i>DFO(6309650-08)</i>
Delete	suspended well, depth over wellhead unknown (See Chart No. 1, L21.1) This notice affects Electronic Navigational Chart: CA376137	43°49'25.0"N 060°39'47.0"W <i>DFO(6309650-09)</i>
Delete	suspended well, depth over wellhead unknown (See Chart No. 1, L21.1) This notice affects Electronic Navigational Chart: CA376137	43°50'10.0"N 060°37'15.0"W <i>DFO(6309650-10)</i>
Replace	pipeline with abandoned pipeline (See Chart No. 1, L40.1, L44) This notice affects Electronic Navigational Chart: CA376137	between 43°48'42.8"N 060°41'14.0"W and 43°50'09.6"N 060°37'14.0"W <i>DFO(6309650-11)</i>
Replace	pipeline with abandoned pipeline (See Chart No. 1, L40.1, L44) This notice affects Electronic Navigational Chart: CA376137	joining 43°47'21.2"N 060°45'14.0"W 43°48'13.0"N 060°42'11.0"W and 43°48'44.1"N 060°41'14.3"W <i>DFO(6309650-15)</i>

Section 3: Radio Aids to Marine Navigation Corrections

*909/21 Radio Aids to Marine Navigation 2021 (Atlantic, St. Lawrence, Great Lakes, Lake Winnipeg, Arctic and Pacific)

Page 2-61

AMEND AS FOLLOWS FOR SECTION 2.3:

Table 2-28 - Great Lakes (includes St. Lawrence River to Montréal)

Name Coordinates Call Sign	Class of Service	Channel	Remarks
...
Windsor, Ont. 42°19'00"N 083°04'00"W XJP56	-	16 12 14	Operated by the Windsor Port Authority for ship traffic control only. Vessels should make initial calls directly on Ch14. Initial calls to the Harbour Authority should be made on Ch16.
...

Page 3-1

AMEND AS FOLLOWS FOR SECTION 3.1:

There is no intention on the part of the Canadian Coast Guard to attempt to navigate or manoeuvre ships from a shore station and nothing in this publication overrides the authority of the master of ~~his~~ ~~their~~ responsibility for the safe navigation of ~~his~~ ~~their~~ ship. Information passed to the master is intended to assist ~~him~~ ~~them~~ in the safe conduct of ~~his~~ ~~their~~ ship.

Page 3-2

AMEND AS FOLLOWS FOR SECTION 3.3.1:

Where a ship, for any reason other than ship board radio equipment failure is unable to obtain the required traffic clearance or after receiving a traffic clearance, is unable to maintain direct communication with the appropriate MCTS Centre, the master may nevertheless proceed on ~~his~~ ~~their~~ route, but shall take all reasonable measures to communicate with the appropriate MCTS Centre as soon as possible and obtain the specified clearance.

Page 4-22

AMEND AS FOLLOWS FOR SECTION 4.2.2:

Master

(2) While a vessel is undergoing repairs, modifications or conversions in dry dock or in port or is laid up, the vessel's master may, on ~~his or her~~ ~~their~~ own initiative, and shall, if directed to do so by the Minister,

- a) reduce the frequency of the transmission of LRIT information to once every 24 hours; or
- b) temporarily stop the transmission of LRIT information.

Pages 4-37 to 4-38

AMEND AS FOLLOWS FOR SECTION 4.2.7.9:

Table 4-8 - Sailing Plan and Departure Report Example

EXAMPLE	EXPLANATION
... Z//EOR Z//EOR//	<u>Required</u> ... Z //end of report. Z /end of report// <u>Optional</u> ...

Table 4-9 - Final Arrival Report Example

EXAMPLE	EXPLANATION
... Z//EOR Z//EOR//	<u>Required</u> ... Z //end of report. Z /end of report// <u>Optional</u> ...

Table 4-10 - Position Report Example

EXAMPLE	EXPLANATION
... Z//EOR Z//EOR//	<u>Required</u> ... Z //end of report. Z /end of report// <u>Optional</u> ...

Table 4-11 - Deviation Report Used to Report Sailing Plan and Other Changes Example

EXAMPLE	EXPLANATION
... Z//EOR Z//EOR//	<u>Required</u> ... Z //end of report. Z /end of report// <u>One or more of the following optional items</u> ...

Page 4-78

AMEND AS FOLLOWS FOR SECTION 4.3.11:

Non-Canadian ships (except Liberian ships) may obtain a cargo Ship Safety Radio Certificate (GMDSS) in Canada. Applications should originate with the owners, ship agents or masters of the ships concerned and be supported by confirmation from the Consul or other official representative of the country in which the ship is registered. Confirmation shall be in writing. It is the responsibility of the owner, agent or master to contact the Consul or official representative and arrange to submit the necessary confirmation to the local Canadian Coast Guard inspection office. Where time is limited, a verbal request for an inspection may be accepted from the Consul or official representative (a person who has a document from an Administration giving ~~him~~ **them** the official power to act on their behalf), provided that the confirmation is submitted later.

Section 4: Sailing Directions and Small Craft Guide Corrections

ATL 108 — Gulf of St. Lawrence (Southwest Portion) — Northumberland Strait, First Edition, 2006

Chapter 3 — Paragraph 192

Delete: Leading **lights**...with red stripes.

Replace by: The channel is **buoyed** within Canoe Gully, leading to the wharves.

(A2021-008.2)

Chapter 3 — Paragraph 214, after "...along the inner face."

Delete: A **light**...end of the wharf

Replace by: The wharf is protected by a rock **breakwater**. A **light (1103)** is shown from a pipe swing pole, having a red and white daymark, on the western edge of the wharf. Another **light (1103.5)** is shown from a mast on the eastern extremity of the wharf.

(A2021-008.3)

Chapter 4 — Paragraph 263, after "... red, white and black rectangular daymark."

Delete: **Leading lights**...south of Middle Ground.

Replace by: Another **light (1345)** is shown from a skeleton tower, having a green, white and black daymark. The light is situated on a point of land which is located along Dalhousie Harbour, between the east and west marine terminals.

(A2021-008.4)

Section 5: List of Lights, Buoys and Fog Signals Corrections

The amendments are **highlighted** and deletions are **crossed out**. For general and region-specific information on the List of Lights, click on the following links: [Newfoundland and Labrador Coast](#), [Atlantic Coast](#), [Inland Waters](#) and [Pacific Coast](#).

No.	Name	Position ----- Latitude N. Longitude W.	Light Characteristics	Focal Height in m. above water	Nomi- nal Range	Description ----- Height in meters above ground	Remarks ----- Fog Signals
-----	------	--	--------------------------	--	-----------------------	--	---------------------------------

NEWFOUNDLAND AND LABRADOR COAST

ST. MARY'S BAY (LL 7.5 – 14)

8.21	Graven Beach Wharf						Delete from list.					Chart:4843 Edn 09/21 (N21-082)
------	--------------------	--	--	--	--	--	--------------------------	--	--	--	--	-----------------------------------

PLACENTIA BAY (LL 14.4 – 79)

38.1 H0397.3	Little Harbour East Wharf Light	47 38 32.8 053 56 10.6	FI G 4s	2	Cylindrical Mast.	Flash 1 s; eclipse 3 s. Year round.					Chart:4839 Edn 09/21 (N21-107)
38.56 H0396.5	Little Southern Harbour Breakwater Light	Southern Harbour. 47 43 07.8 053 57 46.3	FI G 4s	2	Mast. 2.6	Flash 1 s; eclipse 3 s. Operates 24 h. Year round.					Chart:4839 Edn 09/21 (N21-120)
41	Swift Current Wharf						Delete from list.					Chart:4839 Edn 09/21 (N21-109P)
63.55	Marystown Wharf Light	On outer end of wharf. 47 09 56.2 055 08 51.5	FI Y 4s	2	Mast.	Flash 1 s; eclipse 3 s. Operates 24 h. Year round.					Chart:4587 Edn 09/21 (N21-075, 153)
64 H0373	Go By Point Light	Beau Bois Cove. 47 08 23.3 055 05 18.8	FI G 4s	25.9	4	Square skeleton tower, white and green rectangular day mark. 4.7	Flash 1 s; eclipse 3 s. Year round.					Chart:4587 Edn 09/21 (N21-111)
67 H0370	Iron Island Light	E. of Pardy Island. 47 02 23.2 055 07 16.5	FI R 4s	36.0	5	Square skeleton tower, red and white square day mark. 4.3	Flash 1 s; eclipse 3 s. Year round.					Chart:4616 Edn 09/21 (N21-113)
69 H0366	Shalloway Island Light	SW. of Little Burin. 47 00 14.0 055 10 11.6	FI R 4s	27.1	4	Square skeleton tower, red and white rectangular day mark. 4.5	Flash 1 s; eclipse 3 s. Year round.					Chart:4616 Edn 09/21 (N21-114)
72	Corbin						Delete from list.					Chart:4616 Edn 09/21 (N21-115)

Notices to Mariners – Monthly Eastern Edition
Section 5: List of Lights, Buoys and Fog Signals Corrections

No.	Name	Position ----- Latitude N. Longitude W.	Light Characteristics	Focal Height in m. above water	Nomi- nal Range	Description ----- Height in meters above ground	Remarks ----- Fog Signals
FORTUNE BAY (LL 100 – 120.1)							
113.06	English Harbour East Wharf Light	On the public wharf. 47 37 56.3 054 53 07.9	Fl G 4s	2	Mast.	Flash 1 s; eclipse 3 s. Operates 24 h. Year round. Chart:4831 Edn 09/21 (N21-078)
SOUTHWEST COAST (LL 121 – 172)							
170.5	Pikes Island Breakwater light buoy QP6	Port aux Basques. 47 34 31.8 059 07 56.0	Fl R 4s	Red, marked "QP6".	Year round. Chart:4641 Edn 09/21 (N21-098)
STRAIT OF BELLE ISLE (LL 211 – 234)							
211.15	Barbace Point North Cardinal light buoy XPB	50 44 00.2 057 20 37.2	VQ W 0.5s	Black and yellow, marked "XPB".	Operates 24 h. Seasonal. Chart:4679 Edn 09/21 (N21-072)
211.5	Port au Choix light buoy XP2	NE. of Barbace Point. 50 44 17.9 057 20 04.2	Fl R 4s	Red spar, marked "XP2".	Seasonal. Chart:4679 Edn 09/21 (N21-134)
211.6	Querré Island Shoal light buoy XP3	Port au Choix. 50 43 07.9 057 20 10.5	Fl G 4s	Green spar, marked "XP3".	Seasonal. Chart:4679 Edn 09/21 (N21-132)
211.7	Ardent Rock light buoy XP4	Port au Choix entrance. 50 43 17.3 057 20 01.2	Q R 1s	Red spar, marked "XP4".	Seasonal. Chart:4679 Edn 09/21 (N21-074P)
216.1	St Barbe light buoy XB2	At St Barbe entrance. 51 12 43.3 056 46 56.4	Q R 1s	Red, marked "XB2".	Seasonal. Chart:4667 Edn 09/21 (N21-057, 138)
216.12	St Barbe Inner light buoy XB3	At St Barbe entrance. 51 12 23.3 056 46 15.1	Fl G 4s	Green spar, marked "XB3".	Year round. Chart:4667 Edn 09/21 (N21-056)
WHITE BAY (LL 235 – 269.3)							
237.2	Vincent Shoal North Cardinal light buoy KQ	Quirpon Harbour. 51 35 14.4 055 27 12.7	Q W 1s	Black and yellow spar, marked "KQ".	Seasonal. Chart:4512 Edn 09/21 (N21-065)
263.5	Wild Cove Wharf Light	Seaward side of wharf. 49 59 35.0 056 20 30.2	Fl G 4s	4	Pipe tower.	Flash 1 s; eclipse 3 s. Operates 24 h. Seasonal. Chart:4821 Edn 09/21 (N21-063)
NEWFOUNDLAND AND LABRADOR COAST (LL 269.99 – 325.23)							
270.4	Red Point Bank East Cardinal light buoy NWW	NE. of Red Point, Denbigh Island. 52 31 21.7 055 44 21.7	Q(3) W 10s	Black, yellow and black, marked "NWW".	Seasonal. Chart:5179 Edn 09/21 (N21-066P)

Notices to Mariners – Monthly Eastern Edition
Section 5: List of Lights, Buoys and Fog Signals Corrections

No.	Name	Position ----- Latitude N. Longitude W.	Light Characteristics	Focal Height in m. above water	Nomi- nal Range	Description ----- Height in meters above ground	Remarks ----- Fog Signals
270.45	Mad Moll Rocks North Cardinal light buoy NA1/1	Alexis Bay. 52 30 28.8 055 43 51.0	F G 4s	Green, marked "NA1/1".	Seasonal. Chart: 5179 Edn 09/21 (N21-097)
272.7	Port Hope Simpson light buoy NA13	At the entrance. 52 32 26.7 056 13 41.3	F G 4s	Green spar, marked "NA13".	Operates 24 h. Seasonal. Chart:5179 Edn 09/21 (N21-069)
279.287	Pinsent's Arm Inner light buoy NMP6	52 41 17.0 055 53 13.7	Q R 1s	Red spar, marked "NMP6".	Operates 24 h. Seasonal. Chart:5032 Edn 09/21 (N21-070)
279.9	Barr Tickle North light buoy NMN1	St. Michaels Bay. 52 46 56.6 055 54 07.0	Q G 1s	Green spar, marked "NMN1".	Operates 24 h. Seasonal. Chart:5032 Edn 09/21 (N21-092P)
NOTRE DAME BAY (LL 326 – 346.4, 354 – 395)							
331.9	Black Rock Sunker East Cardinal light buoy DLB	Little Bay Islands. 49 38 11.5 055 45 55.6	Q(3) W 10s	Black, yellow and black spar, marked "DLB".	Seasonal. Chart:4592 Edn 09/21 (N21-053)
341.494	Haywards Gull Island light buoy DR1/1	Entrance to Robert's Arm 49 29 57.9 055 46 30.1	F G 4s	Green spar, marked "DR1/1".	Operates 24 h. Seasonal. Chart:4593 Edn 09/21 (N21-064)
372.61	Stag Harbour Run light buoy DX7	49 33 37.2 054 16 29.1	F G 4s	Green spar, marked "DX7".	Operates 24 h. Seasonal. Chart:4530 Edn 09/21 (N21-093P)
388.2	Noggin Cove light buoy DN4	49 25 01.6 054 18 42.5	F R 4s	Red spar, marked "DN4".	Seasonal. Chart:4862 Edn 09/21 (N21-023)
388.3	Noggin Cove light buoy DN5	49 25 02.4 054 18 37.0	F G 4s	Green spar, marked "DN5".	Seasonal. Chart:4862 Edn 09/21 (N21-024)
BONAVISTA BAY (LL 396 – 449.5)							
396.75	Musgrave Harbour Outer Breakwater Light	49 27 36.2 053 57 19.7	FI W 4s	4	Cylindrical mast. 2.4	Flash 1 s; eclipse 3 s. Seasonal. Chart:4530 Edn 09/21 (N21-049)
399 H0594	Muddy Hole Point Light	49 27 23.1 053 56 28.5	FI G 4s	7.9	4	Square skeleton tower, green and white rectangular day mark. 4.3	Flash 1 s; eclipse 3 s. Operates 24 h. Seasonal. Chart:4530 Edn 09/21 (N21-062)

Notices to Mariners – Monthly Eastern Edition
Section 5: List of Lights, Buoys and Fog Signals Corrections

No.	Name	Position ----- Latitude N. Longitude W.	Light Characteristics	Focal Height in m. above water	Nomi- nal Range	Description ----- Height in meters above ground	Remarks ----- Fog Signals
TRINITY BAY (LL 450.1 – 471.51)							
470.5 H0503.2	Old Perlican Inner Breakwater Light	On seaward end of inner breakwater. 48 05 14.0 053 00 29.6	Fl R 3s	4.6	4	Cylindrical Mast. 2.6	Flash 0.5 s; eclipse 2.5 s. Year round. Chart:4850 Edn 09/21 (N21-155)
470.51	Old Perlican Inner light buoy TP9	48 05 15.3 053 00 31.4	Fl G 4s	Green spar, marked "TP9".	Seasonal. Chart:4850 Edn 09/21 (N21-088)
470.52	Old Perlican Inner light buoy TP	48 05 17.7 053 00 25.1	Fl Y 4s	Yellow spar, marked "TP".	Operates 24 h. Seasonal. Chart:4850 Edn 09/21 (N21-127)
470.53	Old Perlican Inner Harbour light buoy TP11	48 05 17.8 053 00 27.5	Fl G 4s	Green spar, marked "TP11".	Seasonal. Chart:4850 Edn 09/21 (N21-089)
470.54	Old Perlican Inner light buoy TP11						Delete from list. Chart:4850 Edn 09/21 (N21-126)
470.71	Old Perlican Inner light buoy TP6	48 05 18.9 053 00 48.2	Fl R 4s	Red spar, marked "TP6".	Seasonal. Chart:4850 Edn 09/21 (N21-087)
470.72	Old Perlican Inner light buoy TP7	East coast. 48 05 19.8 053 00 47.9	Fl G 4s	Green spar, marked "TP7".	Seasonal. Chart:4850 Edn 09/21 (N21-086P)
470.73	Old Perlican Outer light buoy TP4	48 05 25.5 053 00 53.4	Fl R 4s	Red spar, marked "TP4".	Seasonal. Chart:4850 Edn 09/21 (N21-085)
470.74	Old Perlican Outer light buoy TP5	48 05 25.7 053 00 51.8	Fl G 4s	Green spar, marked "TP5".	Seasonal. Chart:4850 Edn 09/21 (N21-090)
470.75	Old Perlican Outer light buoy TP3	At entrance to channel. 48 05 30.3 053 00 57.2	Fl G 4s	Green spar, marked "TP3".	Operates 24 h. Seasonal. Chart:4850 Edn 09/21 (N21-077)
470.76	Old Perlican Outer light buoy TP2	At the entrance to channel. 48 05 33.6 053 00 05.4	Fl R 4s	Red spar, marked "TP2".	Operates 24 h. Seasonal. Chart:4850 Edn 09/21 (N21-076)
CAPE ST. FRANCIS TO RENEWS (LL 499 – 516)							
509.5	Aquaforte Breakwater Shoal light buoy MA2	Aquaforte Harbour. 47 00 18.4 052 57 40.4	Fl R 4s	Red spar, marked "MA2".	Year round. Chart:4845 Edn 09/21 (N21-091)

Notices to Mariners – Monthly Eastern Edition
Section 5: List of Lights, Buoys and Fog Signals Corrections

No.	Name	Position ----- Latitude N. Longitude W.	Light Characteristics	Focal Height in m. above water	Nomi- nal Range	Description ----- Height in meters above ground	Remarks ----- Fog Signals
-----	------	--	--------------------------	--	-----------------------	--	---------------------------------

ATLANTIC COAST

BAY OF FUNDY, N.B. (LL 5 – 114, 145 – 157)

150 H4076	West Quaco	On Quaco Head. 45 19 25.3 065 32 08.8	FI W 10s	26.0	21	White rectangular tower with red upper portion. 11.7	Flash 0.3 s; eclipse 9.7 s. Operates 24 h. Year round. Horn - Blast 3 s; sil. 27 s. Horn points 130°. Chart:4010 Edn 09/21 (F21-041)
--------------	-------------------	---	----------	------	----	--	--

CAPE BRETON ISLAND, N.S. (LL 704.85 – 882.5)

784 H0764	Sydney South Arm range	Near N. extremity of point. 46 09 26.8 060 12 12.4	Oc G 10s	8.0	16	Triangular skeleton tower, white day mark with red vertical stripe. 6.7	Flash 9 s; eclipse 1 s. Visible in line of range. Operates 24 h. Year round.
785 H0764.1		162°32' 151.1 m from front.	F G	16.1	16	Triangular skeleton tower, white day mark with red vertical stripe. 13.1	Visible in line of range. Operates 24 h. Year round. Chart:4266 Edn 09/21 (G21-109, 110)
874.31	Inverness Inner light buoy VL1	Inverness Harbour. 46 13 39.5 061 19 18.3	Q G 1s	Green spar, marked "VL1".	Operates 24 h. Seasonal. Chart:4463 Edn 09/21 (G21-076)
879.5	Portsmouth Point light buoy VK7	S. of point. 45 59 06.2 061 33 19.6	Q G 1s	Green spar, marked "VK7".	Seasonal. Chart:4448 Edn 09/21 (G21-082)
882.3	Smith Point South Cardinal light buoy VM	Port Hood. 46 00 23.2 061 33 07.6	Q(6)+ LFI W 15s	Yellow and black spar, marked "VM".	Seasonal. Chart:4448 Edn 09/21 (G21-083)

GULF OF ST. LAWRENCE (LL 883.2 – 940.3, 1169.1 – 1426, 1477.5 – 1584)

883.2	Aulds Cove light buoy VT2	45 38 58.2 061 26 02.1	FI R 4s	Red, marked "VT2".	Buoy may be repositioned due to shifting channel. Seasonal. Chart:4302 Edn 09/21 (G21-072)
1248.133	Shippegan South Gully light buoy TJ7	47 42 46.0 064 39 50.1	FI G 4s	Green spar, marked "TJ7".	Buoy may be repositioned due to shifting channel. Operates 24 h. Seasonal. Chart:N/A Edn 09/21 (G21-185)

PRINCE EDWARD ISLAND (LL 942 – 1084.7)

1028.2 H1062.1	West Point Wharf	End of wharf. 46 37 04.1 064 22 17.7	FI G 4s	4	Cylindrical mast, green- white-black square day mark. 5.3	Flash 1 s; eclipse 3 s. Seasonal. Chart:4905 Edn 09/21 (G21-111)
-------------------	-------------------------	--	---------	-------	---	--	---

Notices to Mariners – Monthly Eastern Edition
Section 5: List of Lights, Buoys and Fog Signals Corrections

No.	Name	Position ----- Latitude N. Longitude W.	Light Characteristics	Focal Height in m. above water	Nomi- nal Range	Description ----- Height in meters above ground	Remarks ----- Fog Signals
1032.45	Mimnegash South Cardinal light buoy DPA	46 52 37.9 064 14 36.3	Q(6) W 15s + LFI	Yellow and black spar, marked "DPA".	Operates 24 h. Seasonal. Chart:4906 Edn 09/21 (G21-074)
1032.55	Mimnegash East Cardinal light buoy DPC	46 53 08.6 064 14 12.6	Q(3) W 10s	Black, yellow and black spar, marked "DPC".	Operates 24 h. Seasonal. Chart:N/A Edn 09/21 (G21-075)

NORTHUMBERLAND STRAIT (LL 1085 – 1165.9)

1144.5	Richibucto Harbour light buoy Q28	46 42 31.3 064 48 38.5	Fl R 4s	Red, marked "Q28".	Buoy may be repositioned due to shifting channel. Seasonal. Chart:4909 Edn 09/21 (G21-142)
--------	--------------------------------------	---------------------------	---------	-------	-------	--------------------	--

ST. LAWRENCE RIVER (LL 1584.5 – 1772, 1823.8 – 2185.7, 2273 – 2365.95)

2135	Yamachiche light buoy S58	Courbe Yamachiche. 46 12 48.7 072 49 07.9	Fl R 4s	Red spar, marked "S58".	Year round. Chart:1312 Edn 09/21 (Q20-237)
------	------------------------------	---	---------	-------	-------	-------------------------	--

INLAND WATERS

LAKE ONTARIO (LL 403.4 – 551)

521	Port Credit East Breakwater	On outer end of E. breakwater. 43 32 54.8 079 34 28.9	Fl R 4s	6.4	4	Red Mast, red and white triangular day mark. 2.2	Private aid. Seasonal. Chart:2048 Edn 09/21 (B21-021)
523	Port Credit East Breakwater Extension	43 32 50.9 079 34 35.0	Q R 1s	11.2	4	White cylindrical tower with red upper portion. 5.0	Private aid. Year round. Chart:2048 Edn 09/21 (B21-022)
525	Port Credit Inner Harbour	43 32 53.6 079 34 49.5	Fl R 4s	7.0	4	Red mast. 5.0	Private aid. Seasonal. Chart:2048 Edn 09/21 (B21-023)

DETROIT RIVER (LL 624 – 707.5)

656	Hackett Reach range	42 05 48.0 083 06 47.9	F R	13.7	14	White cylindrical tower, red triangular day mark with black vertical stripe. 12.5	Visible in line of range. Operates 24 h. Year round.
657		014°55' 303 m from front.	F R	24.8	14	White skeleton tower, red triangular day mark with black vertical stripe. 23.2	Visible in line of range. Operates 24 h. Year round. Chart:14853 (U.S.) Edn 09/21 (B21-019, 020)

Notices to Mariners – Monthly Eastern Edition
Section 5: List of Lights, Buoys and Fog Signals Corrections

No.	Name	Position ----- Latitude N. Longitude W.	Light Characteristics	Focal Height in m. above water	Nomi- nal Range	Description ----- Height in meters above ground	Remarks ----- Fog Signals
-----	------	--	--------------------------	--	-----------------------	--	---------------------------------

GEORGIAN BAY (LL 814 – 982)

825	Lion's Head Harbour	On wharf. 44 59 25.9 081 14 53.6	Iso W 4s	8.4	9	White square tower with red corners and upper portion. 8.6	Seasonal (in place year round). Chart:2282 Edn 09/21 (D21-013)
-----	------------------------	--	----------	-----	---	---	--

NORTH CHANNEL – LAKE HURON (LL 983 – 1041)

1027	Mills Island	46 07 49.9 082 41 45.9	Fl W 4s	10.4	5	Cylindrical Mast, red and white cylindrical day mark, red triangle in centre. 5.1	Seasonal (in place year round). Chart:2259 Edn 09/21 (D21-032)
------	--------------	---------------------------	---------	------	---	--	--