



Fisheries and Oceans  
Canada

Pêches et Océans  
Canada

Canadian  
Coast Guard

Garde côtière  
canadienne

# Notices to Mariners

**Edition No. 10/2021**  
**October 29, 2021**



Safety First, Service Always

## Monthly Western Edition

Canada 

Notices to Mariners – Monthly Western Edition  
Edition No. 10/2021

Aussi disponible en français :  
Avis aux navigateurs – Édition mensuelle de l'Ouest  
Édition n° 10/2021

**Published under the Authority of:**

Canadian Coast Guard Programs  
Aids to Navigation and Waterways  
Fisheries and Oceans Canada  
Montreal, QC H2Y 2E7

For more information, contact [Notmar.XNCR@dfo-mpo.gc.ca](mailto:Notmar.XNCR@dfo-mpo.gc.ca).

© Her Majesty the Queen in Right of Canada,  
as represented by the Minister of Fisheries, Oceans  
and the Canadian Coast Guard, 2021.

Cat. No. Fs152-6E-PDF (Electronic PDF, English)  
ISSN 1719-7708

Cat. No. Fs152-6F-PDF (Electronic PDF, French)  
ISSN 1719-7716

A web version is available here:

<https://www.notmar.gc.ca/monthly-mensuel-en.php> (English)

<https://www.notmar.gc.ca/monthly-mensuel-fr.php> (French)

## Explanatory Notes – Notices to Mariners (NOTMAR)

**Geographical positions** refer directly to the graduations of the largest scale Canadian Hydrographic Service chart (unless otherwise indicated).

**Bearings** refer to the true compass and are measured clockwise from 000° (North) clockwise to 359°; those relating to lights are from seaward.

**Visibility** of lights is that in clear weather.

**Depths** - The units used for soundings (metres, fathoms or feet) are stated in the title of each chart.

**Elevations** are normally given above Higher High Water, Large Tide (unless otherwise indicated).

**Distances** may be calculated as follows:

- 1 nautical mile = 1,852 metres (6,076.1 feet)
- 1 statute mile = 1,609.3 metres (5,280 feet)
- 1 metre = 3.28 feet

### Temporary and Preliminary Notices to Mariners – Section 1A of *Notices to Mariners*

These notices are indicated by a (T) or a (P), respectively. Please note that nautical charts are not amended by the Canadian Hydrographic Service for temporary (T) and preliminary (P) notices. It is recommended that mariners chart these corrections in pencil. For the list of charts affected by (T) & (P) notices, please refer to the current [Notices to Mariners - Monthly Summary of Temporary and Preliminary Notices](#) publication.

### Suggestions and Corrections Form

This form is specifically for suggestions and corrections to Notices to Mariners publications. It is available [online](#) and also in [fillable PDF format](#) included with the monthly publication ZIP file.

To report chart discrepancies and/or corrections to the *Sailing Directions* booklets: Fill out the [Marine Information Reporting Form](#) and/or email [chsinfo@dfo-mpo.gc.ca](mailto:chsinfo@dfo-mpo.gc.ca).

To report emergencies or navigational hazards: [Contact your nearest MCTS centre](#)

- VHF channel 16 (156.8 MHz)
- MF/HF frequency 2182 kHz/4125 kHz (where available)
- \*16 on a cellphone (where available)

### NOTMAR Website – Monthly Editions, Chart Corrections and Chart Patches

The NOTMAR website allows users to access the [monthly publications](#), [chart corrections](#), and [chart patches](#).

Users can subscribe for free to the [email notification service](#) to receive notifications when charts of interest are updated, including their patches, as well as when a new Monthly Edition of *Notices to Mariners* is published.

In addition, the monthly publication and related files to download, such as chart patches and *Sailing Directions* diagrams, can be obtained all together through the download of a single ZIP file.

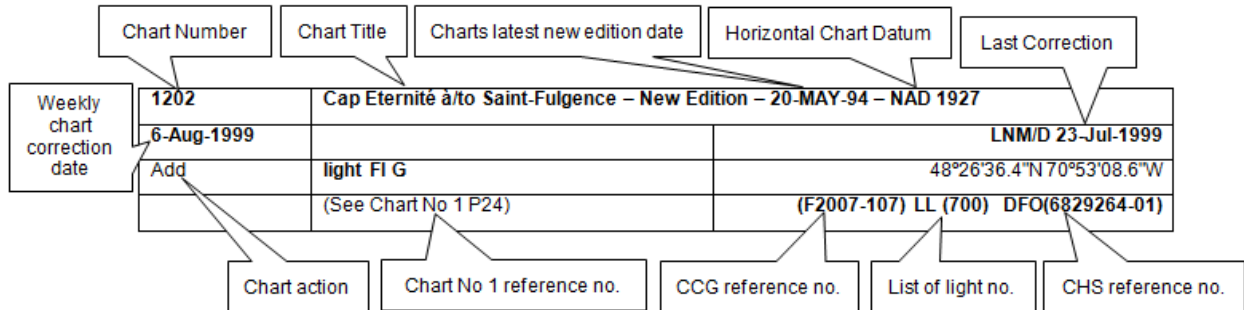
## Explanatory Notes – Canadian Hydrographic Service (CHS)

### Chart Corrections – Section 2 of *Notices to Mariners*

Corrections to nautical charts will be listed in numerical order by chart number. Each chart correction listed applies only to that particular chart. Related charts, if any, will have their own specific correction listed separately.

Users should also refer to CHS *Chart 1: Symbols, Abbreviations and Terms* for additional information pertaining to the correction of charts.

The illustration below describes the elements that will comprise a typical Section 2 chart correction:



The last correction number is identified with the **LNMD** or **Last Notice to Mariners Number / Date**.

Mariners are advised that only the most critical changes that directly affect safety to navigation are issued in “Section 2 – Chart Corrections.” This limitation is required to ensure that charts remain as clear and easy to read as possible. As a result, mariners may see minor discrepancies of a non-critical nature between information in official publications. For example, a small change in the nominal range or focal height of a light may not result in the production of a chart correction in *Notices to Mariners*, but may result in a correction in the [List of Lights, Buoys and Fog Signals](#) publication.

**Note:** In the case of a discrepancy between information provided on CHS charts relating to aids to navigation, and the *List of Lights, Buoys and Fog Signals* publication, the latter shall be deemed as containing the most up-to-date information.

### Canadian Nautical Charts & Publications

A source list of Canadian nautical charts and publications is published in Notice No. 14 of the *Notices to Mariners Annual Edition 2021*. The source supply and the prices effective at the time of printing are listed. For current chart edition dates, please refer to the following website: [www.chs-shc.gc.ca/charts-cartes/paper-papier/index-eng.asp](http://www.chs-shc.gc.ca/charts-cartes/paper-papier/index-eng.asp).

## Explanatory Notes – Marine Communications and Traffic Services (MCTS)

### Navigational Warnings / Notices to Shipping

The Canadian Coast Guard (CCG) is implementing a number of changes to the aids to navigation system in Canada.

These changes are advertised as Navigational Warnings, formerly called Notices to Shipping<sup>1</sup>, that are broadcast by the CCG, and are then followed up with Notices to Mariners, then charts are updated by hand correction, reprints or new editions.

Mariners are advised that all relevant Navigational Warnings (NAVWARN) should be kept until superseded by Notices to Mariners or through revised charts issued by the Canadian Hydrographic Service (CHS).

NAVWARN are accessible on the applicable regional page on the CCG Navigational Warnings website at <http://nis.ccg-gcc.gc.ca>.

CHS is reviewing the impact of these changes with CCG and together are preparing an action plan on the issuing of chart revisions.

For further information, contact your regional NAVWARN Issuing Desk.

<p><b>Western Region</b> <b>Prince Rupert MCTS Centre</b></p> <p>“P” Series NAVWARN</p> <p>Canadian Coast Guard Bag 4444 Prince Rupert, BC V8J 4K2</p> <p>Telephone: 250-627-3070</p> <p>Email: <a href="mailto:NAVWARN.MCTSPrinceRupert@innav.gc.ca">NAVWARN.MCTSPrinceRupert@innav.gc.ca</a></p>	<p><b>Arctic Region</b> <b>*Iqaluit MCTS Centre</b></p> <p><i>Operational from approximately mid-May until late December.</i></p> <p>“A” and “H” Series NAVWARN</p> <p>Canadian Coast Guard P.O. Box 189 Iqaluit, NU X0A 0H0</p> <p><u>“A” Series NAVWARN</u> Telephone: 867-979-5269</p> <p><u>“H” Series NAVWARN</u> Telephone: 867-979-0310</p> <p>Facsimile: 867-979-4264</p> <p>Email: <a href="mailto:NAVWARN.MCTSIlqaluit@innav.gc.ca">NAVWARN.MCTSIlqaluit@innav.gc.ca</a></p>
--	--

\*Service available in English and in French.

<sup>1</sup> The expression “Notice to Shipping” was changed to “Navigational Warning” in January 2019.

## Table of Contents

<b>Section 1: General and Safety Information</b>	<b>1</b>
Canadian Coast Guard Publication – Comments and Suggestions on Notices to Mariners (NOTMAR) Publications .....	1
Transport Canada – COVID-19 Measures, Updates and Guidance.....	1
Anguniaqvia Niqiyuam Marine Protected Area (ANMPA) And Tarium Niryutait Marine Protected Areas (TNMPA) – Beluga And Bowhead Whale Protection: Voluntary Avoidance And Slowdown Areas.....	1
West Coast Haida Gwaii – Trial Voluntary Protection Zone for Shipping .....	4
*1001/21 Canadian Hydrographic Service – Nautical Charts.....	5
*1002/21 Canadian Hydrographic Service – Electronic Navigational Charts.....	6
*1003/21 Canadian Hydrographic Service – Raster Digital Charts (BSB V3).....	6
*1004/21 Canadian Coast Guard Publication – Amendments to Notices to Mariners Annual Edition 2021 - Section C, Notice 27A: Guidelines for the Transit of Wide-Beam Vessels and Long Vessels .....	7
*1005/21 Canadian Coast Guard Publication – Amendments to the <i>List of Lights, Buoys and Fog Signals</i> Publication: Pacific Coast.....	7
<b>Section 1A: Temporary and Preliminary Notices</b>	<b>8</b>
Reminder – Comment Period for Active Preliminary Notices .....	8
<b>Section 2: Chart Corrections</b>	<b>9</b>
<b>Section 3: Radio Aids to Marine Navigation Corrections</b>	<b>14</b>
*1008/21 Radio Aids to Marine Navigation 2021 (Atlantic, St. Lawrence, Great Lakes, Lake Winnipeg, Arctic and Pacific).....	14
<b>Section 4: Sailing Directions and Small Craft Guide Corrections</b>	<b>15</b>
<b>Section 5: List of Lights, Buoys and Fog Signals Corrections</b>	<b>17</b>

## Numerical Index of Canadian Charts Affected

This numerical index lists all nautical charts mentioned in this monthly edition of Notices to Mariners. Only charts appearing in Section 2 of this publication require a chart correction. The appearance of charts in all other sections, particularly those related to the correction of other nautical publications, is included here for reference.

Chart No.	Pages	Chart No.	Pages	Chart No.	Pages
3001	<a href="#">9</a>				
3056	<a href="#">8</a>				
3441	<a href="#">9</a>				
3479	<a href="#">9</a>				
3489	<a href="#">9, 10</a>				
3490	<a href="#">10</a>				
3512	<a href="#">10</a>				
3514	<a href="#">10</a>				
3515	<a href="#">10</a>				
3526	<a href="#">11</a>				
3546	<a href="#">11</a>				
3892	<a href="#">11, 12</a>				
3895	<a href="#">12</a>				
4445	<a href="#">5</a>				
4468	<a href="#">5</a>				
4483	<a href="#">5</a>				
4940	<a href="#">5</a>				
6021	<a href="#">12</a>				
6211	<a href="#">12</a>				
6214	<a href="#">12, 13</a>				
6371	<a href="#">17</a>				

## Section 1: General and Safety Information

### Canadian Coast Guard Publication – Comments and Suggestions on Notices to Mariners (NOTMAR) Publications

In an effort to continuously improve the Notices to Mariners publications and to provide the most efficient service possible, the Notices to Mariners team invites all mariners and other interested parties to submit comments and suggestions on possible improvements to its various publications and services at the following email address: [Notmar.XNCR@dfo-mpo.gc.ca](mailto:Notmar.XNCR@dfo-mpo.gc.ca).

### Transport Canada – COVID-19 Measures, Updates and Guidance

(Recurrent publication of notice \*401/20, originally published in the *Notices to Mariners – Monthly Western Edition 04/2020* publication.)

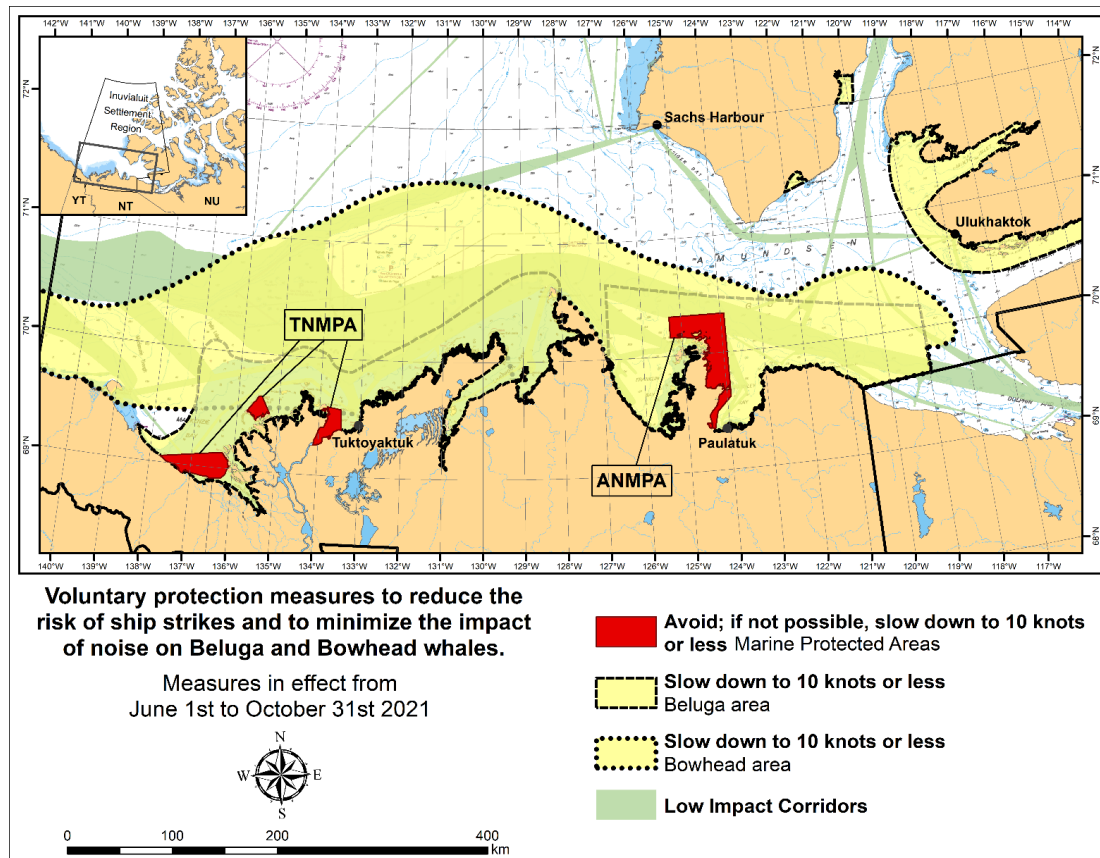
Please refer to the link below for the latest updates to transportation related measures taken by Transport Canada in response to the evolving novel Coronavirus disease (COVID-19):

<https://www.tc.gc.ca/en/initiatives/covid-19-measures-updates-guidance-tc.html>.

For travel advice and all other updates, please visit: [Canada.ca/coronavirus](https://Canada.ca/coronavirus).

### Anguniaqvia Niqiqyuam Marine Protected Area (ANMPA) And Tarium Niryutait Marine Protected Areas (TNMPA) – Beluga And Bowhead Whale Protection: Voluntary Avoidance And Slowdown Areas

(Recurrent publication of notice \*506/21, originally published in the *Notices to Mariners – Monthly Western Edition 05/2021* publication.)





The two established Marine Protected Areas (MPAs) in Canada's Western Arctic are located within the Inuvialuit Settlement Region, as such all activities must comply with the [Inuvialuit Final Agreement](#). Protection and preservation of Arctic wildlife, the environment and biological productivity is one of the principles of the Inuvialuit Final Agreement and it is this principle that led the Inuvialuit Regional Corporation and the Inuvialuit Game Council to initiate establishment of the Western Arctic MPAs. The waters in and near the MPAs, and the offshore marine habitats of the Beaufort Sea and Amundsen Gulf, are important summer foraging habitats used seasonally (May-October) by the Eastern Beaufort Sea beluga stock, and the Bering-Chukchi-Beaufort bowhead population.

### Regulatory Protection Measures

All whale species are protected under the Marine Mammal Regulations, pursuant to the *Fisheries Act*. Within the boundaries of the MPAs, a general prohibition is set out in the Regulations, pursuant to the *Oceans Act*. Any incident with a marine mammal within the MPAs must be reported within two hours after its occurrence, to the Canadian Coast Guard. For marine wildlife sightings and incidents such as collisions that occur outside the MPAs or for any situation involving a marine mammal that is dead or in trouble, contact Fisheries and Oceans Canada, Inuvik office at (867) 777-7500.

For more information on the ANMPA and TNMPA, including local contacts and species specific minimum distances, see Section A2 - Notices 5 and 5A.3 of the *Notices to Mariners Annual Edition 2021*.

### Voluntary Protection Measures

Voluntary measures are in effect from June 1<sup>st</sup> to October 31<sup>st</sup>, 2021. See map above.

These measures apply to merchant vessels, cruise ships, small vessels and adventure craft within the boundaries of the MPAs and the additional identified areas to prevent collisions with whales and to mitigate the underwater noise generated by the vessels. These measures should only be taken when they will not jeopardize navigational safety.

**Avoid (red area):** To reduce the risk of underwater noise disturbance and collisions with whales within the MPAs, vessels should avoid transiting through the MPAs if possible. If passage through this area is required, vessels should slow down to a maximum speed through the water of 10 knots and post a lookout such as a marine mammal observer in order to increase the chances of seeing the whales and thus taking necessary measures to avoid them. If bypassing the whales is not possible, slow down and wait for the animals to move away to a distance greater than 400 metres (0.215 nautical miles) before resuming original speed up to 10 knots. It is more difficult to see the animals in rain, fog, or in rough sea states, therefore increased caution is recommended.

**Slow down to 10 knots or less (yellow area):** To reduce the risk of underwater noise disturbance and collisions with whales within this area, it is recommended that vessels should slow down to a maximum speed through the water of 10 knots, remain in the navigation and marked community supply channels and post a lookout.

These voluntary measures are secondary to rights under the Inuvialuit Final Agreement.

### MPA Coordinates

The Tarium Nirvutait Marine Protected Areas consist of three areas of the Mackenzie Bay: Okeevik, Kittigaryuit and Niaqunnaq. The three areas are bounded by rhumb lines connecting the following geographical coordinates [North America Datum 1983 (NAD 83)/World Geodetic System (WGS 84)].

<b>Okeevik Sub Area</b>		
<b>Point</b>	<b>Latitude (North)</b>	<b>Longitude (West)</b>
1	69° 38' 19"	135° 25' 09"
2	69° 38' 03"	135° 25' 11"
3	69° 37' 46"	135° 24' 52"
4	69° 29' 49"	135° 12' 49"
5	69° 30' 45"	135° 16' 56"
6	69° 29' 26"	135° 18' 53"
7	69° 29' 23"	135° 19' 06"
8	69° 28' 07"	135° 20' 25"
9	69° 27' 36"	135° 24' 25"
10	69° 25' 51"	135° 32' 27"
11	69° 26' 32"	135° 34' 54"
12	69° 28' 21"	135° 35' 24"
13	69° 28' 35"	135° 36' 40"
14	69° 28' 39"	135° 37' 58"
15	69° 30' 34"	135° 45' 54"
16	69° 35' 18"	135° 35' 42"
17	69° 36' 00"	135° 22' 10"
18	69° 34' 40"	135° 20' 09"
19	69° 34' 00"	135° 20' 09"
20	69° 34' 00"	135° 27' 39"
21	69° 36' 00"	135° 27' 39"
22	69° 27' 00"	135° 31' 11"
23	69° 27' 00"	135° 34' 45"

<b>Kittigaryuit Sub Area</b>		
<b>Point</b>	<b>Latitude (North)</b>	<b>Longitude (West)</b>
1	69° 35' 10"	133° 48' 26"
2	69° 34' 00"	133° 28' 00"
3	69° 23' 37"	133° 26' 40"
4	69° 20' 34"	133° 40' 37"
5	69° 19' 05"	133° 42' 21"
6	69° 19' 01"	133° 42' 31"
7	69° 20' 39"	133° 43' 20"
8	69° 16' 42"	133° 54' 54"
9	69° 15' 20"	134° 06' 53"
10	69° 16' 33"	134° 05' 56"
11	69° 20' 42"	134° 02' 44"
12	69° 24' 00"	133° 59' 10"
13	69° 24' 34"	133° 53' 49"
14	69° 28' 21"	133° 48' 15"
15	69° 28' 02"	133° 50' 59"
16	69° 33' 20"	133° 47' 29"
17	69° 34' 33"	133° 47' 42"
18	69° 32' 55"	133° 51' 09"
19	69° 32' 56"	133° 51' 54"
20	69° 33' 46"	133° 55' 48"
21	69° 33' 46"	133° 55' 31"

<b>Niaqunnaq Sub Area</b>		
<b>Point</b>	<b>Latitude (North)</b>	<b>Longitude (West)</b>
1	69° 08' 00"	136° 16' 44"
2	69° 04' 25"	136° 07' 45"
3	69° 03' 43"	136° 07' 08"
4	69° 01' 19"	136° 04' 45"
5	69° 01' 14"	136° 04' 45"
6	69° 00' 57"	136° 05' 42"
7	69° 00' 12"	136° 07' 08"
8	68° 57' 00"	136° 10' 00"
9	68° 55' 00"	136° 15' 00"
10	68° 54' 22"	136° 31' 50"
11	68° 55' 00"	136° 38' 33"
12	68° 56' 15"	137° 00' 41"
13	68° 56' 29"	137° 03' 03"
14	68° 55' 48"	137° 11' 00"
15	68° 57' 50"	137° 16' 40"
16	68° 59' 20"	137° 21' 30"
17	69° 03' 09"	137° 44' 54"

The Anguniaqvia niqiqyuam Marine Protected Areas consist of two areas in Darnley Bay and Amundsen Gulf in the Beaufort Sea: Zone 1 and Zone 2. The areas consist of the seabed, the subsoil to a depth of five metres and the water column, including the sea ice. The two areas are bounded by straight lines connecting the following geographical coordinates [North America Datum 1983 (NAD 83)].

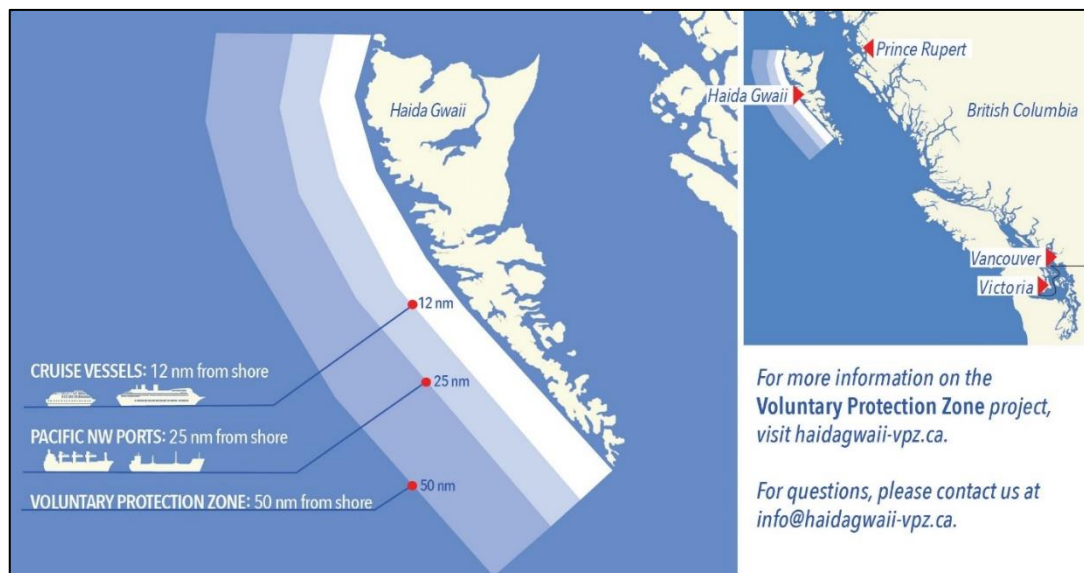
Zone 1		
Point	Latitude (North)	Longitude (West)
A	69° 21' 07.8"	124° 21' 32.0" approx
B	70° 12' 00.0" approx	124° 31' 55.2"
C	70° 08' 22.0"	124° 41' 45.0" approx
D	70° 09' 09.9"	124° 57' 42.0" approx
E	70° 09' 13.0" approx	125° 05' 28.6"
F	70° 09' 13.2"	125° 17' 53.0"
G	70° 20' 00.0"	125° 17' 53.0"
H	70° 20' 00.0"	123° 54' 17.5"
I	69° 37' 20.6"	123° 54' 17.5"
J	69° 30' 00.0"	124° 15' 34.7"

Zone 2		
Point	Latitude (North)	Longitude (West)
K	70° 04' 15.8"	124° 41' 51.0" approx
L	70° 04' 48.6"	124° 41' 54.0" approx
M	70° 02' 12.9"	124° 35' 23.0" approx
N	70° 02' 12.9"	124° 35' 29.0" approx

### West Coast Haida Gwaii – Trial Voluntary Protection Zone for Shipping

(Recurrent publication of notice \*903/21, originally published in the *Notices to Mariners – Monthly Western Edition 09/2021* publication.)

Reference: Notice \*803/21 is cancelled.



**Voluntary Protection Zone for Shipping, West Coast Haida Gwaii (formerly Queen Charlotte Islands)**

Haida Gwaii's remote location, rugged coastline, variable sea and weather conditions, and rich ecological and cultural heritage make it vulnerable to the potential for pollution from shipping breakdowns and accidents. Increasing the distance vessels travel offshore can increase the amount of time available to address propulsion, steering or other issues, and the likelihood of a towing vessel being able to respond to a vessel that is disabled or drifting. This in turn reduces the risk of grounding and oil spills.

A Voluntary Protection Zone for Shipping on the West Coast of Haida Gwaii is currently in effect. In the Voluntary Protection Zone, commercial vessels of 500 gross tonnage or greater shall observe a minimum distance of 50 nautical miles offshore when transiting along the West Coast of Haida Gwaii with the following exceptions:

- Cruise vessels, to observe a minimum 12 nm distance from shore;
- Vessels transiting between Pacific Northwest ports (Washington, Alaska, BC), to observe a minimum 25 nm distance from shore;
- Tugs and barges (including pushing and towing alongside), no minimum distance; and
- Fishing vessels, no minimum distance.

The Voluntary Protection Zone for Shipping coordinates are:

54° 15.436' N 133° 04.788' W  
 54° 17.572' N 134° 02.484' W  
 54° 13.614' N 134° 19.427' W  
 54° 11.786' N 134° 30.841' W  
 53° 44.036' N 134° 32.677' W  
 53° 11.118' N 134° 16.412' W  
 52° 18.483' N 133° 20.917' W  
 51° 24.590' N 132° 04.081' W  
 51° 56.158' N 131° 01.830' W

Vessels are requested to adhere to these distances on a voluntary basis and only when it does not jeopardize the safety of navigation, the vessel, the persons aboard, and the cargo.

(NW-P-1085-20)

**\*1001/21 Canadian Hydrographic Service – Nautical Charts**

Charts	Main Title	Scale	Published	Cat#	Price
<b>New Charts</b>					
4940	Northumberland Strait Central Portion - Ports/Harbours	1:40 000	2021-10-15	1	\$20.00
<b>New Editions</b>					
4468	Île du Petit Mécatina aux/to Îles Sainte-Marie	1:750 000	2021-10-15	1	\$20.00
<b>Charts Permanently Withdrawn</b>					
4445	Merigomish Harbour	Cancelled by 4940			
4483	Caribou Harbour	Cancelled by 4940			

**\*1002/21 Canadian Hydrographic Service – Electronic Navigational Charts**

S-57 ENC Number	Chart Title	ENC Compilation Scale	Published
<b>New Charts</b>			
CA476610 (Edn 1.000)	Northumberland Strait Central Portion - Ports/Harbours	1:20 000	2021-10-22
CA476613 (Edn 1.000)	Northumberland Strait Central Portion - Ports/Harbours	1:20 000	2021-10-22
CA576449 (Edn 1.000)	Northumberland Strait Central Portion - Ports/Harbours	1:2 000	2021-10-22
CA576611 (Edn 1.000)	Northumberland Strait Central Portion - Ports/Harbours	1:7 500	2021-10-22
<b>New Editions</b>			
CA376102 (Edn 7.000)	Barren Island to/à Taylors Head	1:30 000	2021-10-22
CA470380 (Edn 5.000)	Carpenter Bay to/à Burnaby Island (Eastern Portion, Part 2 of 2)	1:18 750	2021-10-15
CA470624 (Edn 4.000)	Kitkatla Channel and/et Ogden Channel	1:20 000	2021-10-15
CA473474 (Edn 2.000)	Pike-Resor Channel	1:20 000	2021-10-01
CA570015 (Edn 9.000)	Fraser River/Fleuve Fraser, Sand Heads to/à Douglas Island	1:10 000	2021-10-15
CA573008 (Edn 7.000)	Toronto Harbour	1:7 500	2021-10-01
CA573387 (Edn 5.000)	Port de Valleyfield	1:2 500	2021-10-15
<b>Charts Permanently Withdrawn</b>			
CA576464	Caribou Harbour	Cancelled by CA476610	
CA576465	Caribou Ferry Terminal/Terminal du traversier	Cancelled by CA576611	
CA576466	Wood Islands Ferry Terminal/Terminal du traversier	Cancelled by CA576449	

**\*1003/21 Canadian Hydrographic Service – Raster Digital Charts (BSB V3)**

Charts	Main Title	Scale	Published
<b>New Charts</b>			
RM-4940	Northumberland Strait Central Portion - Ports/Harbours	1:40 000	2021-10-15
<b>Charts Permanently Withdrawn</b>			
RM-4445	Merigomish Harbour	Cancelled by RM-4940	
RM-4483	Caribou Harbour	Cancelled by RM-4940	

**\*1004/21 Canadian Coast Guard Publication – Amendments to Notices to Mariners Annual Edition 2021 - Section C, Notice 27A: Guidelines for the Transit of Wide-Beam Vessels and Long Vessels**

Several amendments have been made throughout notice 27A : Guidelines for the Transit of Wide-Beam Vessels and Long Vessels. The latest version of the notice can be found at the following link: <https://www.notmar.gc.ca/publications/annual-annuel/section-c/c27a-en.pdf>.

**\*1005/21 Canadian Coast Guard Publication – Amendments to the *List of Lights, Buoys and Fog Signals* Publication: Pacific Coast**

Please note that the "Fraser River" section in the Pacific Coast volume of the *List of Lights, Buoys and Fog Signals* publication is now separated into two distinct sections. Please see the table below for the complete list of changes.

Previous Section	New Sections
Fraser River LL 310 – 371, 380.5 – 385	Fraser River – South Arm LL 310 – 371
	Fraser River – Middle Arm and North Arm LL 380.5 – 385

## Section 1A: Temporary and Preliminary Notices

### Reminder – Comment Period for Active Preliminary Notices

This is a reminder that the comment period is still open for the following active Preliminary notices:

Notice #	Reference Chart #	Aids Affected (LL #)	Intent of Notice
<b>Pacific Coast</b>			
<a href="#">812(P)/21</a>	3056	29.5, 30, 31	Aids to Navigation to be Discontinued

Please refer to the [Notices to Mariners - Monthly Summary of Temporary and Preliminary Notices](#) publication for details.

### Inland Waters

No notices applicable for this edition.

### Pacific Coast

No notices applicable for this edition.

## Section 2: Chart Corrections

<b>3001 - Vancouver Island / Île de Vancouver, Juan de Fuca Strait to/à Queen Charlotte Sound - New Edition - 23-FEB-2001 - NAD 1927</b>		
08-OCT-2021		LNMD. 16-JUL-2021
Delete	Wilson Creek This notice affects Electronic Navigational Chart: CA270389, CA370382	49°26'36.0"N 123°41'20.0"W <i>DFO(6204490-02)</i>
Add	ts'ukw'um This notice affects Electronic Navigational Chart: CA270389, CA370381	49°26'36.0"N 123°40'20.0"W <i>DFO(6204490-04)</i>
<b>3441 - Haro Strait, Boundary Pass and/et Satellite Channel - New Edition - 01-JUL-2005 - NAD 1983</b>		
15-OCT-2021		LNMD. 19-MAR-2021
Add	depth of 1.0 metre (See Chart No. 1, I10) This notice affects Electronic Navigational Chart: CA470003, CA570567	48°38'18.4"N 123°19'14.1"W <i>DFO(6204491-04)</i>
Delete	depth of 4.6 metres (See Chart No. 1, I10) This notice affects Electronic Navigational Chart: CA470003	48°38'20.5"N 123°19'14.6"W <i>DFO(6204491-07)</i>
<b>3479 - Approaches to/Approches à Sidney - New Chart - 18-MAY-2007 - NAD 1983</b>		
15-OCT-2021		LNMD. 11-JUN-2021
Add	depth of 1.0 metre (See Chart No. 1, I10) This notice affects Electronic Navigational Chart: CA470003, CA570567	48°38'18.4"N 123°19'14.1"W <i>DFO(6204491-04)</i>
Add	depth of 1.8 metres (See Chart No. 1, I10) This notice affects Electronic Navigational Chart: CA570567	48°38'44.0"N 123°20'16.4"W <i>DFO(6204491-05)</i>
Add	depth of 1.3 metres (See Chart No. 1, I10) This notice affects Electronic Navigational Chart: CA570567	48°38'44.7"N 123°20'30.6"W <i>DFO(6204491-06)</i>
<b>3479 - Tsehum Harbour - New Chart - 18-MAY-2007 - NAD 1983</b>		
29-OCT-2021		LNMD. 15-OCT-2021
Add	depth of 0.6 metres (See Chart No. 1, I10) This notice affects Electronic Navigational Chart: CA570567	48°40'27.8"N 123°24'47.1"W <i>DFO(6204495-01)</i>
<b>3489 - Pattullo Bridge to/à Barnston Island - Sheet/Feuille 1 - New Chart - 21-OCT-1994 - NAD 1983</b>		
15-OCT-2021		LNMD. 13-AUG-2021
Add	rock which covers and uncovers with drying height of 0.2 metres (See Chart No. 1, K11) This notice affects Electronic Navigational Chart: CA570015	49°13'08.8"N 122°53'30.0"W <i>DFO(6204492-01)</i>



Delete depth of 2.7 metres 49°13'08.5"N 122°53'29.8"W  
(See Chart No. 1, I10)  
DFO(6204492-02)

**3490 - Fraser River/Fleuve Fraser, Sand Heads to/à Douglas Island, Compartment B-C - New Edition - 02-NOV-2012 - World Geodetic System 1984**

15-OCT-2021 LNMD. 17-SEP-2021  
Add rock which covers and uncovers with drying height of 0.2 metres 49°13'08.8"N 122°53'30.0"W  
(See Chart No. 1, K11)  
This notice affects Electronic Navigational Chart: CA570015  
DFO(6204492-01)

**3512 - Strait of Georgia, Central Portion/Partie Centrale - New Edition - 25-DEC-1998 - NAD 1983**

08-OCT-2021 LNMD. 10-JAN-2020  
Delete Wilson Creek 49°26'35.0"N 123°42'31.0"W  
This notice affects Electronic Navigational Chart: CA370381  
DFO(6204490-01)

Delete Wilson Creek 49°26'21.0"N 123°42'14.0"W  
This notice affects Electronic Navigational Chart: CA270389, CA370382  
DFO(6204490-02)

Add ts'ukw'um 49°26'35.0"N 123°42'31.0"W  
This notice affects Electronic Navigational Chart: CA370381  
DFO(6204490-03)

Add ts'ukw'um 49°26'21.0"N 123°42'14.0"W  
This notice affects Electronic Navigational Chart: CA270389, CA370381  
DFO(6204490-04)

**3514 - Jervis Inlet - New Edition - 02-AUG-1996 - NAD 1983**

08-OCT-2021 LNMD. 30-APR-2021  
Delete Saltery Bay 49°46'53.0"N 124°10'05.5"W  
This notice affects Electronic Navigational Chart: CA470095  
DFO(6204489-01)

Add skelhp 49°46'53.0"N 124°10'05.5"W  
This notice affects Electronic Navigational Chart: CA470095  
DFO(6204489-02)

**3515 - Knight Inlet - New Chart - 18-JAN-1991 - NAD 1983**

29-OCT-2021 LNMD. 21-APR-2017  
Add depth of 1.3 metres 50°43'25.7"N 126°41'43.1"W  
(See Chart No. 1, I10)  
This notice affects Electronic Navigational Chart: CA470311  
DFO(6204496-01)

Delete depth of 4 metres 50°43'24.5"N 126°41'45.5"W  
(See Chart No. 1, I10)  
This notice affects Electronic Navigational Chart: CA470311  
DFO(6204496-02)

**3526 - Howe Sound - New Edition - 01-JUL-2005 - NAD 1983**

22-OCT-2021

LNMD. 31-JUL-2020

Delete port hand daybeacon  
(See Chart No. 1, Qt)  
This notice affects Electronic Navigational Chart: CA470004

49°22'18.0"N 123°17'37.5"W

*(P2021011) DFO(6204469-01)*

**3546 - Broughton Strait - New Edition - 15-APR-2005 - NAD 1983**

29-OCT-2021

LNMD. 03-JUL-2020

Add depth of 1.3 metres  
(See Chart No. 1, I10)  
This notice affects Electronic Navigational Chart: CA470311

50°43'25.7"N 126°41'43.1"W

*DFO(6204496-01)*

Delete depth of 4 metres  
(See Chart No. 1, I10)  
This notice affects Electronic Navigational Chart: CA470311

50°43'25.6"N 126°41'45.5"W

*DFO(6204496-02)*

**3892 - Masset Harbour and/et Naden Harbour - New Chart - 13-JAN-1984 - NAD 1927**

22-OCT-2021

LNMD. 23-JUL-2021

Delete depth of 2.2 metres  
(See Chart No. 1, I10)  
This notice affects Electronic Navigational Chart: CA471012

54°03'31.5"N 132°32'18.5"W

*DFO(6204449-01)*

Add depth of 1.8 metres  
(See Chart No. 1, I10)  
This notice affects Electronic Navigational Chart: CA471012

54°03'31.5"N 132°32'19.5"W

*DFO(6204449-02)*

Add rock which covers and uncovers with drying height of 0.3 metres  
(See Chart No. 1, K11)  
This notice affects Electronic Navigational Chart: CA471012

54°01'33.6"N 132°34'27.9"W

*DFO(6204449-03)*

Add rock which covers and uncovers with drying height of 0.5 metres  
(See Chart No. 1, K11)  
This notice affects Electronic Navigational Chart: CA471012

54°05'03.9"N 132°33'43.9"W

*DFO(6204449-04)*

Add rock awash at chart datum  
(See Chart No. 1, K12)  
This notice affects Electronic Navigational Chart: CA471012

54°05'11.0"N 132°33'39.7"W

*DFO(6204449-05)*

Add rock which covers and uncovers with drying height of 0.6 metres  
(See Chart No. 1, K11)  
This notice affects Electronic Navigational Chart: CA471014

53°58'32.8"N 132°39'34.7"W

*DFO(6204449-06)*

Add rock which covers and uncovers with drying height of 1.0 metre  
(See Chart No. 1, K11)  
This notice affects Electronic Navigational Chart: CA471014

53°58'11.8"N 132°37'33.0"W

*DFO(6204449-07)*

Add	rock which covers and uncovers with drying height of 0.3 metres (See Chart No. 1, K11) This notice affects Electronic Navigational Chart: CA471014	53°58'49.4"N 132°39'42.2"W  <i>DFO(6204449-08)</i>
Delete	depth of 0.8 metres (See Chart No. 1, I10) This notice affects Electronic Navigational Chart: CA471014	53°58'21.9"N 132°38'16.7"W  <i>DFO(6204449-09)</i>
Add	rock awash at chart datum (See Chart No. 1, K12) This notice affects Electronic Navigational Chart: CA471014	53°58'21.9"N 132°38'16.7"W  <i>DFO(6204449-10)</i>
Delete	depth of 0.4 metres (See Chart No. 1, I10) This notice affects Electronic Navigational Chart: CA471014	53°58'09.8"N 132°37'33.9"W  <i>DFO(6204449-14)</i>
<b>3895 - Alexandra Narrows - New Edition - 27-DEC-2002 - NAD 1983</b>		
	22-OCT-2021	LNMD. 02-JUL-2021
Add	rock which covers and uncovers with drying height of 0.8 metres (See Chart No. 1, K11) This notice affects Electronic Navigational Chart: CA571028	54°02'30.9"N 132°34'03.3"W  <i>DFO(6204449-11)</i>
Add	rock which covers and uncovers with drying height of 0.3 metres (See Chart No. 1, K11) This notice affects Electronic Navigational Chart: CA571028	54°01'32.5"N 132°34'33.8"W  <i>DFO(6204449-12)</i>
Affix	patch Download Patch - <a href="https://www.notmar.gc.ca/chsftp/patches/3895_6204449_13_202109160031.pdf">https://www.notmar.gc.ca/chsftp/patches/3895_6204449_13_202109160031.pdf</a> This notice affects Electronic Navigational Chart: CA571028	54°04'00.0"N 132°34'00.0"W  <i>DFO(6204449-13)</i>
<b>6021 - Lake Muskoka - Sheet/Feuille 1 - New Edition - 30-JUL-2004 - NAD 1983</b>		
	01-OCT-2021	LNMD. 17-FEB-2017
Add	red starboard hand conical buoy, marked EH12/2 (See Chart No. 1, Qf)	45°01'21.2"N 079°23'26.0"W  <i>(D2021028) DFO(6604797-01)</i>
<b>6211 - Big Traverse Bay - New Edition - 28-FEB-2020 - NAD 1983</b>		
	01-OCT-2021	LNMD. 14-AUG-2020
Delete	green port hand day beacon (See Chart No. 1, Qt)	49°10'14.0"N 094°21'22.0"W  <i>(D2021029) DFO(6604805-01)</i>
Add	light 'FI G' (See Chart No. 1, P1)	49°10'14.0"N 094°21'22.0"W  <i>(D2021030) LL(1507.5) DFO(6604806-01)</i>
<b>6214 - Sabaskong Bay - Sheet/Feuille 2 - New Edition - 28-FEB-2020 - NAD 1983</b>		
	01-OCT-2021	
Delete	green port hand day beacon (See Chart No. 1, Qt)	49°10'14.0"N 094°21'22.0"W  <i>(D2021029) DFO(6604805-01)</i>

Add

light 'FI G'  
(See Chart No. 1, P1)

49°10'14.0"N 094°21'22.0"W

*(D2021030) LL(1507.5) DFO(6604806-01)*

## Section 3: Radio Aids to Marine Navigation Corrections

### \*1008/21 Radio Aids to Marine Navigation 2021 (Atlantic, St. Lawrence, Great Lakes, Lake Winnipeg, Arctic and Pacific)

#### Page 2-72

#### AMEND AS FOLLOWS FOR SECTION 2.6.4:

Table 2-41 - Radar Beacons Located in Northwest Territories

Name and Location	Identifier	Remarks
Atkinson Point 69°56'46.7"N 131°26'59.3"W	--•-- (Y)	Navigation season only.
Baillie Islands 70°37'38.7"N 128°15'24.8"W	-•- (K)	Navigation season only.
Cape Dalhousie 70°16'05"N 129°42'36"W (NAD27)	--•• (Z)	Navigation season only.
Hardisty Island 61°43'52.6"N 114°35'00.2"W	--• (G)	Navigation season only.
<b>Pelly Island</b> 69°37'26.2"N 135°29'15.7"W	--•-- (Y)	Navigation season only.
Pilot Islands 62°13'04"N 114°06'49.3"W	-•-• (C)	Navigation season only.
Pitt Island 69°09'15"N 136°10'30"W	-•- (K)	Navigation season only.
Pullen Island 69°46'26.2"N 134°24'15.7"W	--• (G)	Navigation season only.
Relief Islet 70°08'45"N 130°49'30"W (NAD27)	--• (G)	Navigation season only.
Tuktoyaktuk Island 69°27'21.2"N 132°59'58.8"W	-•-• (C)	Navigation season only.
Warren Point 69°45'00"N 132°21'30"W	-•-• (C)	Navigation season only.

## Section 4: Sailing Directions and Small Craft Guide Corrections

PAC 201 — Juan de Fuca Strait and Strait of Georgia, First Edition, 2012 —

Chapter 4 — Paragraph 76, after “*Purfleet Point range lights* (“  
Insert: 355.9,  
(P2021-30.01)

Chapter 4 — Paragraph 138  
Delete: “swing span...6.4 m when closed.”  
Replace by: swing span with a vertical clearance of 7 m when closed.  
(P2021-27.01)

Chapter 5 — In the vicinity of paragraph 97, **Table 5.4 Major Port Facilities – Vancouver Harbour Western Portion (North Shore)**. Please make the following corrections to the row “Berth 3” in the “Wharf Length (m)” column  
Delete: 250  
Replace by: 155  
(P2021-24.01)

Chapter 5 — Delete paragraph 211  
(P2021-31.01)

Chapter 7 — Paragraph 7, after “Miami Islet and another”  
Delete: ,visible at LW,  
(P2021-25.01)

Chapter 8 — After paragraph 174  
Insert: 174.1 A submerged **wreck** lies to the SW of the *Comox Bay Marina*; approximately 0.5 mile NNW from the western tip of Goose Spit.  
(P2021-26.01)

Chapter 8 — Adjacent to paragraph 174.1, add a caution pictograph.  
(P2021-26.02)

PAC 202 — Discovery Passage to Queen Charlotte Strait and West Coast of Vancouver Island, First Edition, 2016 —

Chapter 1 — Paragraph 70, first line  
Delete: *Discovery Terminal (Boliden Dock) (Westmin Resources, 250-286-1714)*  
Replace by: *Nyrstar Discovery Terminal*  
(P2021-23.01)

Chapter 1 — Paragraph 70, after “Tyee Spit, is”  
Delete: 122 m long with a depth of 10.3 m  
Replace by: 173 m long with a depth of 10 m  
(P2021-23.02)

Chapter 1 — Paragraph 70, after “the facility was”  
Delete: 179 m long with a draught of 11.6 m  
Replace by: 190 m long with a draught of 12.9 m  
(P2021-23.03)

Chapter 5 — Paragraph 78, after “marked by a sign,”

Delete: is close south of Aguilar Point.

Replace by: extends into the entrance of Bamfield Inlet from its east  
shore, about 0.1 mile NNE of Aguilar Point.

(P2021-28.01)

PAC 206 — Hecate Strait, Dixon Entrance, Portland Inlet and Adjacent Waters and Haida Gwaii, Second Edition, 2015 —

Chapter 4 — Paragraph 4.1, before “Voluntary Exclusion Zone”

Delete: trial

(P2021-29.01)

Chapter 4 — Paragraph 4.1, after “West Coast of Haida Gwaii”

Delete: will be

Replace by: is currently

(P2021-29.02)

Chapter 4 — Paragraph 4.1, after “effect”

Delete: from September 1, 2020 through October 31, 2021

(P2021-29.03)

## Section 5: List of Lights, Buoys and Fog Signals Corrections

The amendments are highlighted and deletions are crossed out. For general and region-specific information on the List of Lights, click on the following links: [Newfoundland and Labrador Coast](#), [Atlantic Coast](#), [Inland Waters](#) and [Pacific Coast](#).

No.	Name	Position ----- Latitude N. Longitude W.	Light Characteristics	Focal Height in m. above water	Nomi- nal Range	Description ----- Height in meters above ground	Remarks ----- Fog Signals
-----	------	--	--------------------------	--	-----------------------	--	---------------------------------

### INLAND WATERS

#### GREAT SLAVE LAKE (LL 1671.7 – 1716)

1687	Hay River Inner range	On W. side of river entrance. 60 51 40.2 115 44 05.6	F R	.....	13.4	11	Tripod skeleton tower, red daymark, white vertical stripe. 12.2	Seasonal.
1688		On synchrolift building wall. 183° 42' 140 m from front.	F R	.....	25.0	.....	Square skeleton tower, red daymark with white vertical stripe. 9.5	Operates 24 h. Seasonal.

Chart:6371  
Edn 10/21 (A21-044)