

Energy Demand

CANADA'S ENERGY FUTURE 2020

Primary Energy Demand: Short Term and Long Term Changes

Evolving Scenario

Primary demand is the total energy used in Canada, including energy to generate electricity.

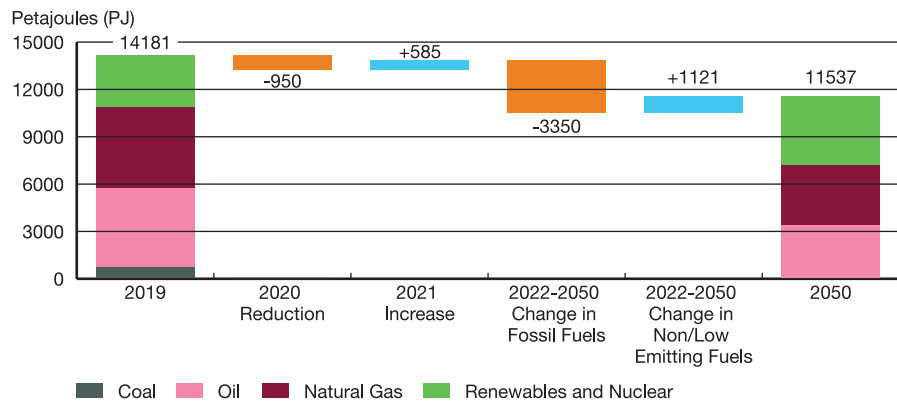
19%
Demand decline
from 2019 to 2050

Short Term Changes:

2020 and 2021
COVID-19 pandemic and recovery

Long Term Changes:

2022 - 2050
Lower demand, more renewables

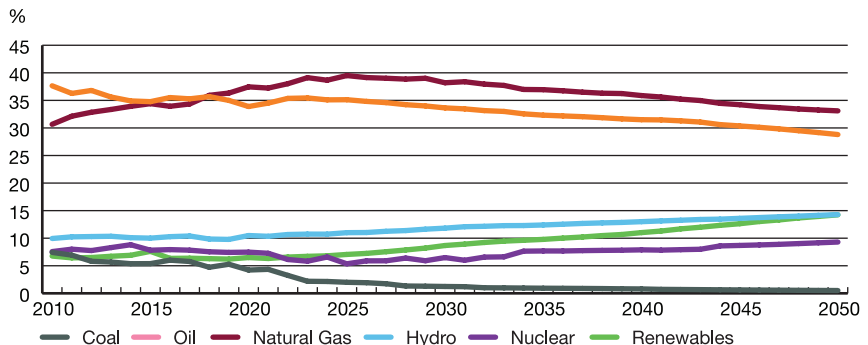
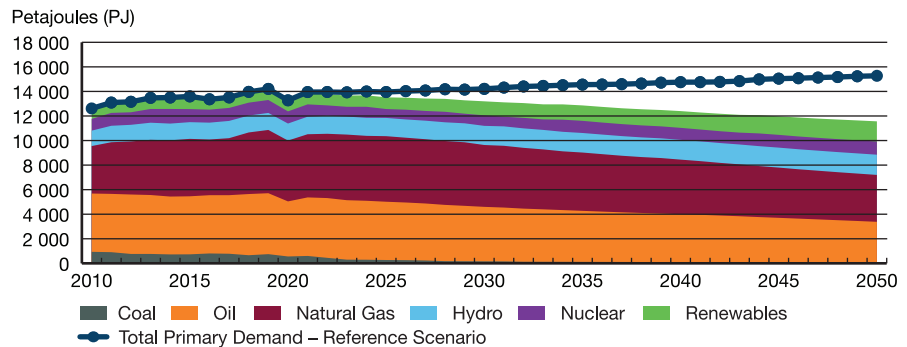


Primary Energy Demand by Fuel and Share of Total Demand – Evolving Scenario

Canada's domestic fossil fuel consumption peaked in 2019 in the Evolving Scenario. By 2030, it is 12% lower, and 35% lower by 2050.

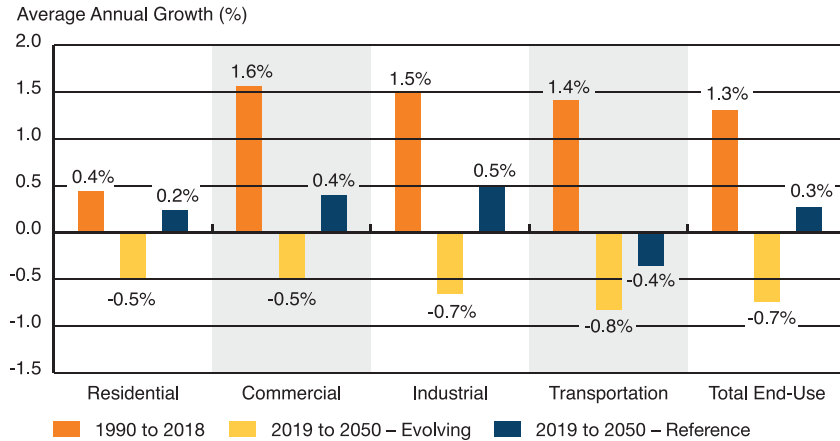
Renewables and nuclear grow by 31% by 2050 and become a larger share of the energy mix.

Refined petroleum product (RPP) use gradually declines due to energy efficiency improvements and increasing use of renewable fuels and electricity. Natural gas use falls in the latter parts of the projection, as renewables play a bigger role in electricity generation, and energy needs to produce fossil fuels decrease.



Energy Demand CANADA'S ENERGY FUTURE 2020

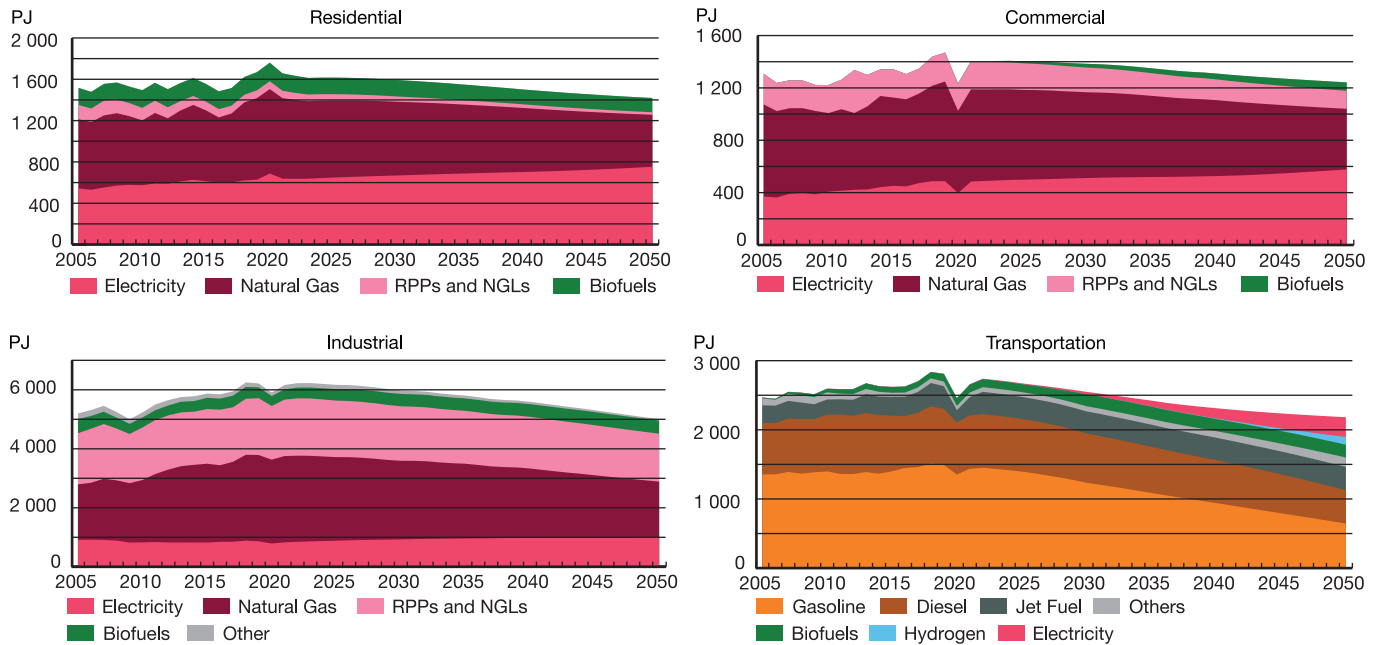
Sectoral End-Use Demand Changes — Evolving Scenario



Canadian energy use demand is projected to decline to 2050. These declines result from several drivers, including macroeconomics, energy production trends, energy efficiency improvements, policies, technology advancements, and market developments.

End-use demand is energy used by final consumers. It includes electricity, and excludes the energy used to generate electricity.

Sectoral End-Use Demand Changes — Evolving Scenario



Macroeconomic Assumptions and Energy Intensity

Average Annual Growth Rates 2019 - 2050

	Real GDP	Population	Energy Use Per Person	Energy Use Per \$ Real GDP	Fossil Fuel Use Per \$ GDP
Evolving Scenario	1.4%	0.8%	-1.4%	-2.0%	-2.7%
Reference Scenario	1.6%	0.8%	-0.6%	-1.3%	-1.4%

Gross Domestic Product (GDP)

Find the Report Appendix data at <https://apps.cer-rec.gc.ca/ftppndc/dffit.aspx?GoCTemplateCulture=en-CA>