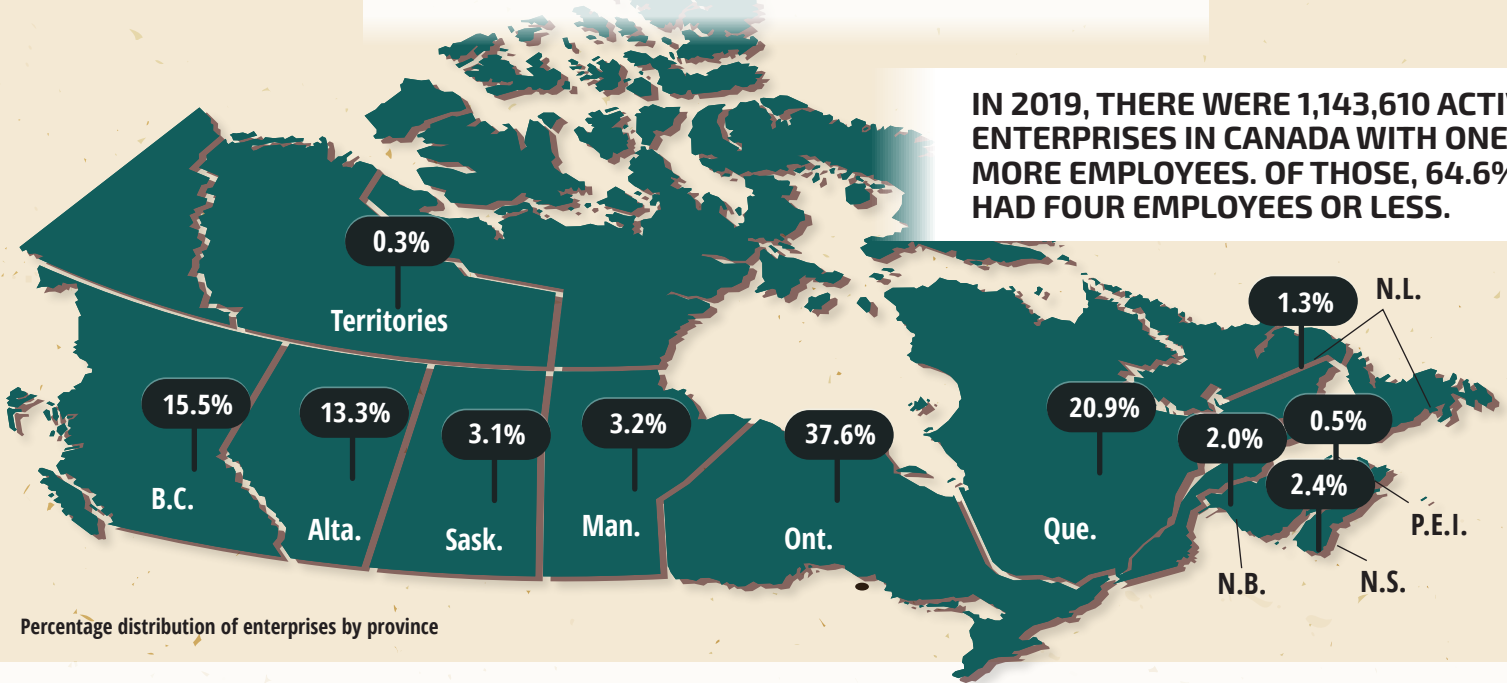


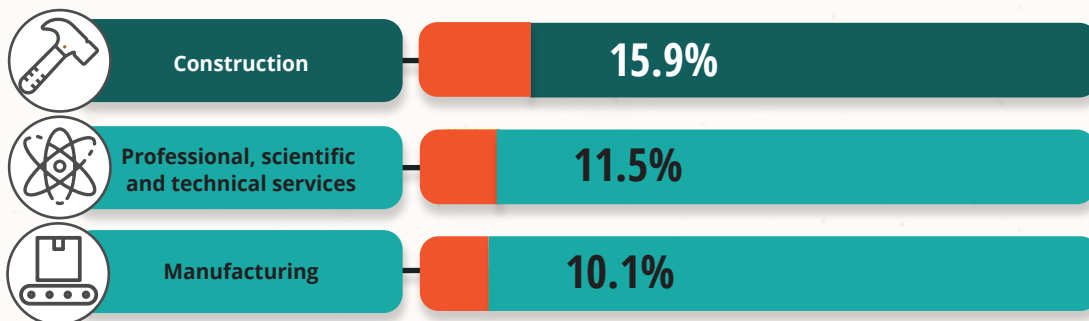
ACTIVE ENTERPRISES IN CANADA, 2019

Active enterprises consist of all enterprises that had either revenue or employees at any time during the reference period.

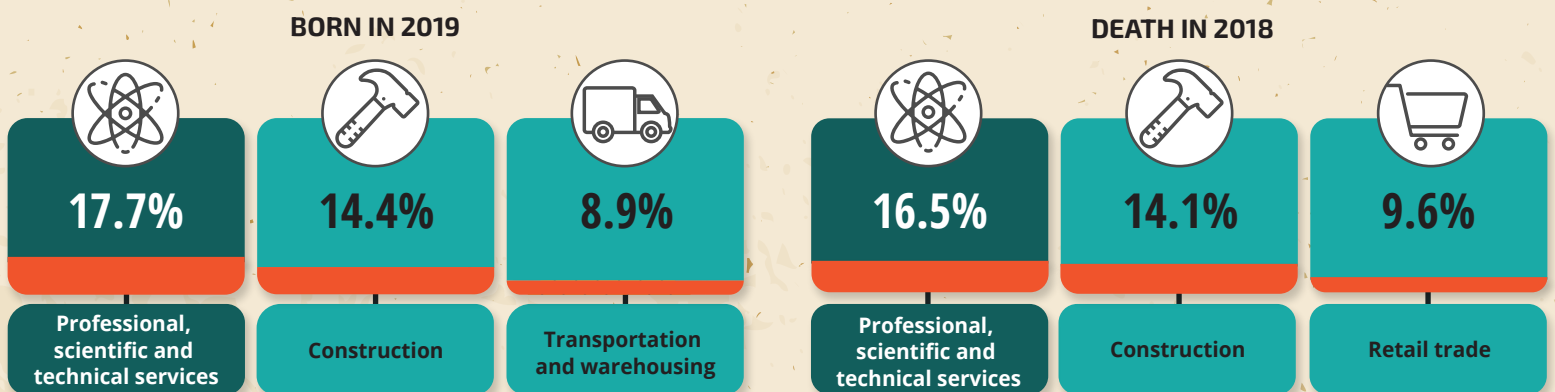
IN 2019, THERE WERE 1,143,610 ACTIVE ENTERPRISES IN CANADA WITH ONE OR MORE EMPLOYEES. OF THOSE, 64.6% HAD FOUR EMPLOYEES OR LESS.



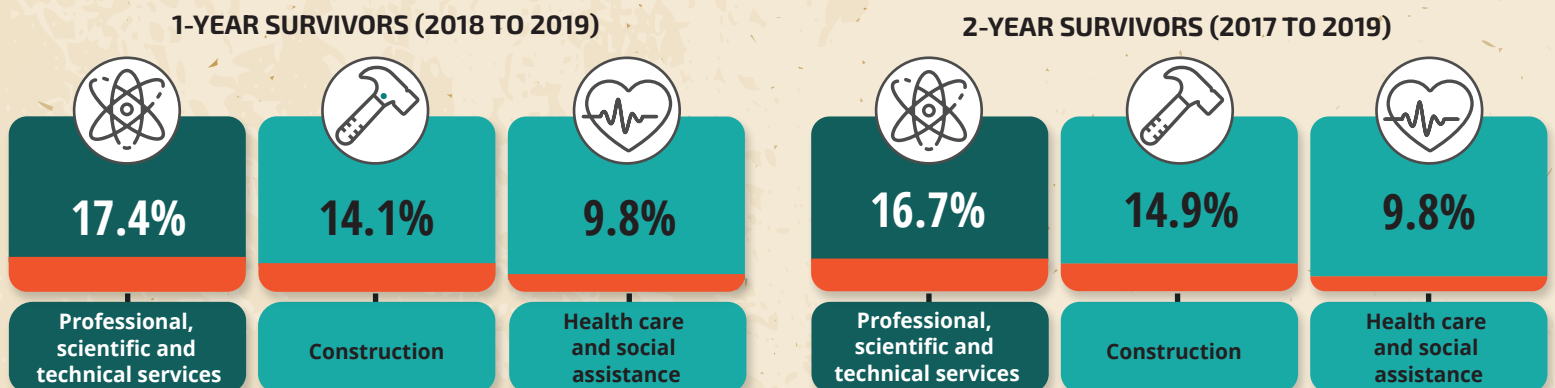
THE LARGEST NUMBER OF HIGH-GROWTH ENTERPRISES WERE IN THE CONSTRUCTION SECTOR.¹



THE PROFESSIONAL, SCIENTIFIC AND TECHNICAL SERVICES INDUSTRY CONTRIBUTED THE MOST TO ENTERPRISE BIRTHS AND DEATHS...



...AND ALSO HAD THE LARGEST SHARE OF ONE- AND TWO-YEAR SURVIVORS.²



1. High-growth enterprises, measured by employment, have an average annual growth in the number of employees greater than 20% over a three-year period and have at least 10 employees at the beginning of the observation period.

2. One-year survivors are enterprises born in 2018 that are active and identifiable in both 2018 and 2019, while two-year survivors are enterprises born in 2017 that are active and identifiable in both 2017 and 2019.

Sources: Statistics Canada, 2021, Entrepreneurship Indicators Database; OECD, 2017, *Entrepreneurship at a Glance 2017*, OECD Publishing, Paris.

© Her Majesty the Queen in Right of Canada, as represented by the Minister of Industry, 2021

Catalogue number: 11-627-M | ISBN: 978-0-660-40754-8