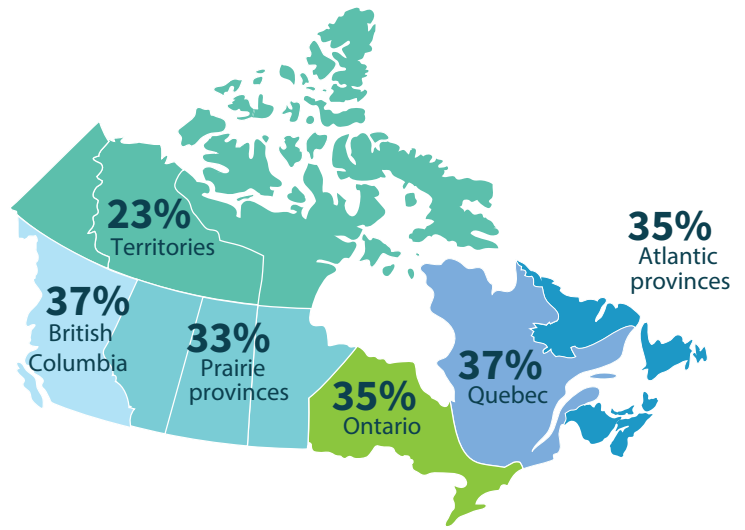


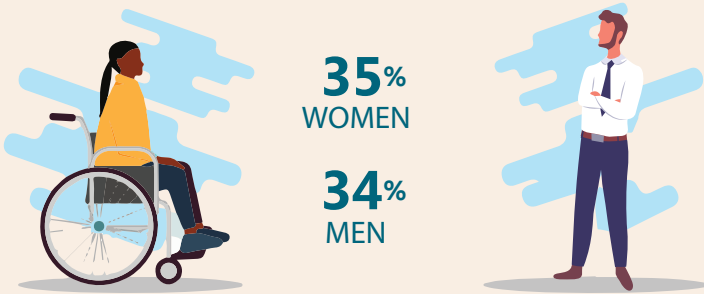
Workers with disabilities receiving payments from the Canada Emergency Response Benefit program, 2020

Using data from the 2017 Canadian Survey on Disability and the 2020 Canada Emergency Response Benefit (CERB) program, this infographic paints a profile of Canadian workers with disabilities who received CERB payments during the period from March 15 to September 26, 2020. The focus of the analysis is workers who had employment or self-employment income of at least \$5,000 in 2019.

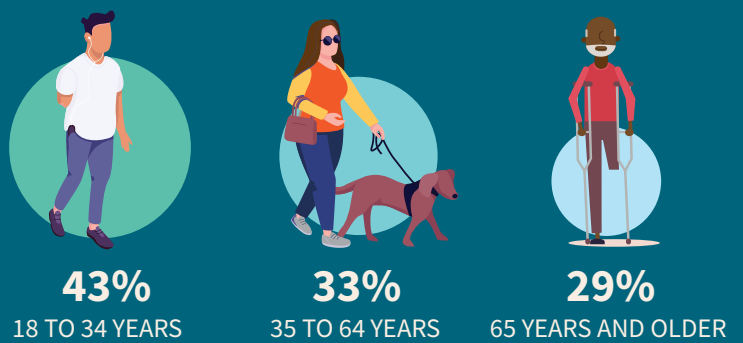
Among the 2.6 million Canadian workers with disabilities who earned at least \$5,000 in 2019, **35%** received CERB payments.^{1,2}



The proportion of workers with disabilities who received CERB payments was similar by sex:



Among workers with disabilities, younger workers were more likely to receive CERB payments than older workers:

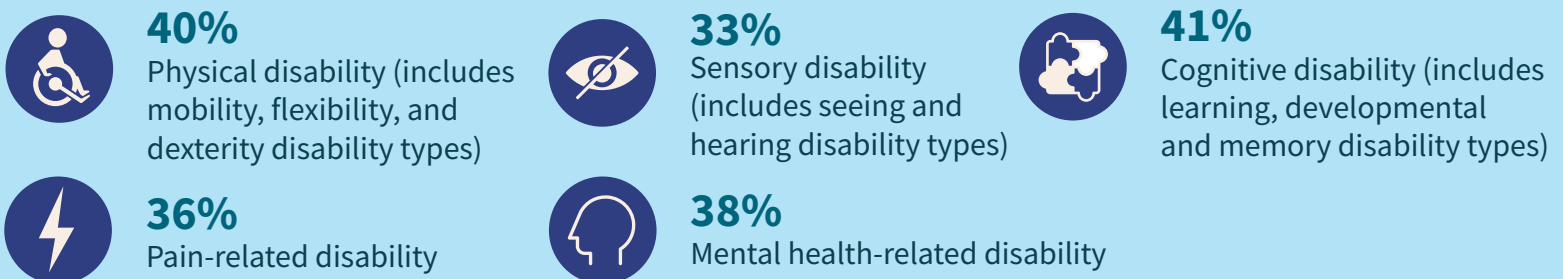


Workers with more severe disabilities were more likely to receive CERB payments (**40%**) than those with less severe disabilities (**33%**).³

Workers with multiple disability types were more likely to receive CERB payments than those with one disability type.

More than three disability types	42%
Two or three disability types	36%
One disability type	30%

The proportion of workers with disabilities who received CERB payments varied by disability type:⁴



¹ The CERB data highlighted in this release are from Employment and Social Development Canada (ESDC) and contain information on initial payments from both streams of the program, one administered by ESDC and the other by the Canada Revenue Agency on its behalf. Earnings in 2019 were gleaned from employee T4 slips as well as net self-employment income and eligible dividends reported on T1 Income Tax and Benefit Return forms.

² Persons with a disability were identified from their responses to the Disability Screening Questionnaire (DSQ) in the 2017 Canadian Survey on Disability (CSD), which included Canadians aged 15 years and older as of May 10, 2016. Information on CERB payments by disability status are therefore only available for respondents to the 2017 CSD. Due to the dynamic nature of disability, the disability status of participants may change over time.

³ Four severity classes were established: mild, moderate, severe, and very severe. Mild and moderate classes were collapsed into "less severe" and severe and very severe classes were collapsed into "more severe."

⁴ Participants may have multiple types of disability and therefore be included in more than one category.

Source: Statistics Canada, 2017 Canadian Survey on Disability and the Canada Emergency Response Benefit administrative file.