

# RESPIRATORY VIRUS DETECTION REPORT

March 6 to March 12, 2022  
(Surveillance Week 2022-10)



In this Respiratory Virus Report, the number of detections of coronavirus reflects only seasonal human coronaviruses, not the novel pandemic coronavirus (SARS-CoV-2) that causes COVID-19. For information on COVID-19, see the [Coronavirus disease \(COVID-19\): Outbreak update](#).

## Overall Summary

Detections of seasonal respiratory viruses have dropped sharply since the end of December 2021. In recent weeks, activity of seasonal respiratory viruses has stabilized and is within or below expected levels for this time of year.

- Activity of enterovirus/rhinovirus (231 detections; 8.2% positive) is increasing, but within expected levels for this time of year.
- Activity of other respiratory viruses is stable and low.
- In recent weeks, testing for all respiratory viruses has decreased.
  - Testing for influenza, respiratory syncytial virus, and enterovirus/rhinovirus remain within expected levels.
  - Testing for other respiratory viruses was below expected levels.
- 32/34 sentinel laboratories reported surveillance data.

## Abbreviations

Flu: Influenza

Flu A(H1N1)pdm09: Influenza A(H1N1)pdm09

Flu A(H3): Influenza A(H3N2)

Flu A (UnS): Influenza A(Unsubtyped)

RSV: Respiratory syncytial virus

HPIV: Human parainfluenza virus

HMPV: Human metapneumovirus

ADV: Adenovirus

EV/RV: Enterovirus/Rhinovirus

HCoV: Human coronavirus

Atl: Atlantic Canada

BC: British Columbia

Can: Canada

EORLA: Eastern Ontario Regional Laboratory Association

HSC: Health Sciences Centre

N.C.: Data not collected

N.R.: Data not reported for current week

ON: Ontario

PR: Prairies

P.H.O.L.: Public Health Ontario Laboratory

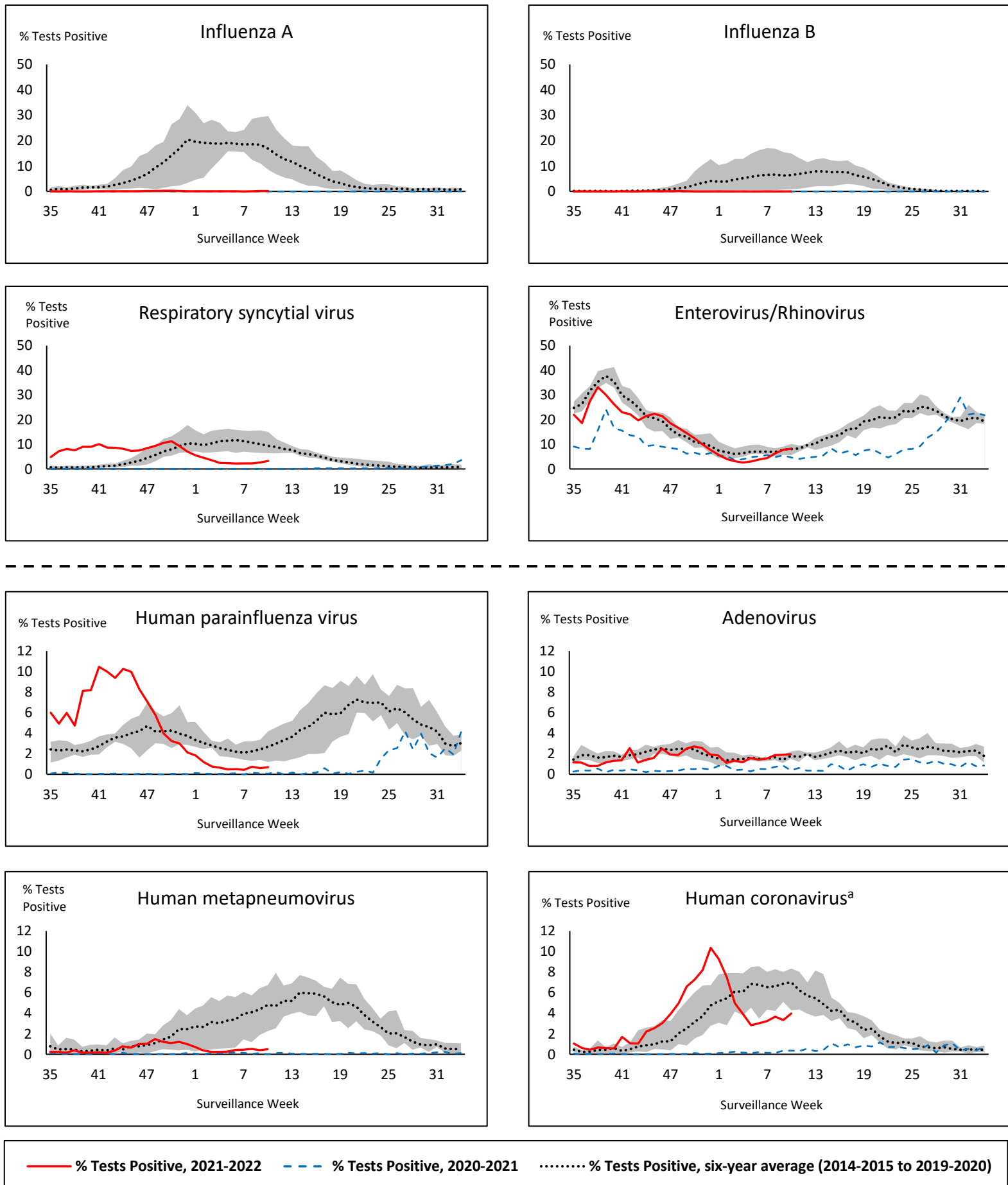
QC: Quebec

Terr: Territories of Canada

UHN: University Health Network



**Figure 1: Positive respiratory virus tests (%) reported by participating laboratories in Canada by surveillance week compared to average and range from 2014-2015 to 2019-2020 season**



Shaded area represents the maximum and minimum % of respiratory virus tests positive reported by week from seasons 2014-2015 to 2019-2020

Note: Data from week 11 of the 2019-2020 season onwards are excluded from the historical comparison due to the COVID-19 pandemic

Note: % Tests Positive scale changes across the dashed line

<sup>a</sup> Human coronavirus excludes human coronaviruses SARS-CoV, MERS-CoV and SARS-CoV-2; Includes seasonal human coronaviruses HCoV-229E, HCoV-OC43, HCoV-NL63, HCoV-HKU1.

**Table 1: Respiratory virus detections for the week ending March 12, 2022 (surveillance week 2022-10)**

Reporting Laboratory	Flu Tested	A(H1)pdm09 Positive	A(H3) Positive	A(UnS) Positive	Total Flu A Positive	Total Flu B Positive	RSV Tested	RSV Positive	HPIV Tested	HPIV 1 Positive	HPIV 2 Positive	HPIV 3 Positive	HPIV 4 Positive	Other HPIV Positive	ADV Tested	ADV Positive	HMPV Tested	HMPV Positive	EV/RV Tested	EV/RV Positive	HCoV Tested	HCoV Positive
Newfoundland	139	0	0	0	0	0	139	3	139	0	0	0	0	0	139	0	139	0	139	1	N.C.	N.C.
Prince Edward Island	63	0	0	0	0	0	63	12	63	0	0	0	0	0	63	0	63	1	63	9	63	1
Nova Scotia	477	0	0	0	0	0	477	1	1	0	0	0	0	0	1	0	1	0	1	0	1	0
New Brunswick	411	0	0	0	0	0	217	1	36	0	0	0	0	0	36	1	36	0	36	1	36	0
<b>Atlantic</b>	<b>1090</b>	<b>0</b>	<b>0</b>	<b>0</b>	<b>0</b>	<b>0</b>	<b>896</b>	<b>17</b>	<b>239</b>	<b>0</b>	<b>0</b>	<b>0</b>	<b>0</b>	<b>0</b>	<b>239</b>	<b>1</b>	<b>239</b>	<b>1</b>	<b>239</b>	<b>11</b>	<b>100</b>	<b>1</b>
Région Nord-Est	410	0	0	0	0	0	89	1	1	0	0	0	0	0	1	1	1	0	N.C.	N.C.	48	1
Québec-Chaudière-Appalaches	80	0	0	1	1	0	84	0	12	0	0	0	1	0	46	6	46	1	N.C.	N.C.	44	0
Centre-du-Québec	91	0	0	0	0	0	90	0	14	0	0	0	0	0	14	0	14	1	N.C.	N.C.	14	0
Montréal-Laval	339	0	0	1	1	0	337	2	162	0	1	0	0	0	162	11	163	2	N.C.	N.C.	162	2
Ouest du Québec	82	0	0	0	0	0	82	0	6	0	0	0	2	0	6	0	6	0	N.C.	N.C.	6	0
Montérégie	38	0	0	1	1	0	38	0	0	0	0	0	0	0	0	0	0	0	N.C.	N.C.	0	0
<b>Province of Québec</b>	<b>1040</b>	<b>0</b>	<b>0</b>	<b>3</b>	<b>3</b>	<b>0</b>	<b>720</b>	<b>3</b>	<b>195</b>	<b>0</b>	<b>1</b>	<b>0</b>	<b>3</b>	<b>0</b>	<b>229</b>	<b>18</b>	<b>230</b>	<b>4</b>	<b>N.C.</b>	<b>N.C.</b>	<b>274</b>	<b>3</b>
P.H.O.L. - Ottawa	20	0	0	0	0	0	20	0	20	0	0	0	0	0	20	0	20	0	20	0	20	4
EORLA	136	0	0	0	0	0	136	2	24	0	0	0	0	0	24	0	24	0	24	3	24	0
P.H.O.L. - Kingston	18	0	0	0	0	0	18	5	18	0	0	0	0	0	18	0	18	0	18	0	18	0
UHN / Mount Sinai Hospital	399	0	0	0	0	0	399	0	14	0	0	0	0	0	14	0	14	0	14	0	14	0
P.H.O.L. - Toronto	152	0	3	1	4	0	149	0	149	0	0	0	0	1	149	2	149	0	149	13	149	4
Sick Kids Hospital - Toronto	N.R.	N.R.	N.R.	N.R.	N.R.	N.R.	N.R.	N.R.	N.R.	N.R.	N.R.	N.R.	N.R.	N.R.	N.R.	N.R.	N.R.	N.R.	N.R.	N.R.	N.R.	N.R.
Sunnybrook & Women's College HSC	N.R.	N.R.	N.R.	N.R.	N.R.	N.R.	N.R.	N.R.	N.R.	N.R.	N.R.	N.R.	N.R.	N.R.	N.R.	N.R.	N.R.	N.R.	N.R.	N.R.	N.R.	N.R.
P.H.O.L. - Sault Ste. Marie	13	0	0	0	0	0	13	0	13	0	0	0	0	0	13	0	13	0	13	0	13	5
P.H.O.L. - Timmins	7	0	0	0	0	0	7	1	7	0	0	0	0	0	7	0	7	0	7	0	7	0
St. Joseph's - London	435	0	0	0	0	0	435	6	435	0	0	0	0	0	435	4	435	0	435	24	6	0
P.H.O.L. - London	43	0	0	0	0	0	43	1	43	0	0	0	0	1	43	1	43	1	43	1	43	1
P.H.O.L. - Orillia	20	0	0	0	0	0	20	1	20	0	0	0	0	0	20	0	20	0	20	4	20	0
P.H.O.L. - Thunder Bay	3	0	0	0	0	0	3	0	3	0	0	0	0	0	3	0	3	0	3	0	3	0
P.H.O.L. - Sudbury	6	0	0	0	0	0	6	0	6	0	0	0	0	0	6	0	6	0	6	0	6	0
P.H.O.L. - Hamilton	40	0	0	0	0	0	40	0	40	0	0	0	0	0	40	0	40	0	40	1	40	4
P.H.O.L. - Peterborough	2	0	0	0	0	0	2	0	2	0	0	0	0	0	2	0	2	0	2	0	2	0
St. Joseph's - Hamilton	472	0	0	0	0	0	472	3	472	0	0	0	0	0	472	7	472	2	472	31	0	0
<b>Province of Ontario</b>	<b>1766</b>	<b>0</b>	<b>3</b>	<b>1</b>	<b>4</b>	<b>0</b>	<b>1763</b>	<b>19</b>	<b>1266</b>	<b>0</b>	<b>0</b>	<b>0</b>	<b>0</b>	<b>2</b>	<b>1266</b>	<b>14</b>	<b>1266</b>	<b>3</b>	<b>1266</b>	<b>77</b>	<b>365</b>	<b>18</b>
Province of Manitoba	734	0	0	0	0	0	734	34	103	0	1	0	0	0	103	3	116	0	103	8	116	2
Province of Saskatchewan	384	0	0	3	3	0	384	50	97	0	0	1	0	0	97	1	97	1	97	16	97	1
Province of Alberta	1367	0	2	1	3	0	602	95	602	0	1	0	2	0	602	8	602	5	602	51	602	21
<b>Prairies</b>	<b>2485</b>	<b>0</b>	<b>2</b>	<b>4</b>	<b>6</b>	<b>0</b>	<b>1720</b>	<b>179</b>	<b>802</b>	<b>0</b>	<b>2</b>	<b>1</b>	<b>2</b>	<b>0</b>	<b>802</b>	<b>12</b>	<b>815</b>	<b>6</b>	<b>802</b>	<b>75</b>	<b>815</b>	<b>24</b>
<b>British Columbia</b>	<b>3711</b>	<b>0</b>	<b>0</b>	<b>0</b>	<b>4</b>	<b>0</b>	<b>3607</b>	<b>70</b>	<b>490</b>	<b>0</b>	<b>0</b>	<b>1</b>	<b>8</b>	<b>0</b>	<b>490</b>	<b>14</b>	<b>490</b>	<b>1</b>	<b>482</b>	<b>66</b>	<b>482</b>	<b>35</b>
Yukon	51	0	0	0	0	0	51	5	N.C.	N.C.	N.C.	N.C.	N.C.	N.C.	N.C.	N.C.	N.C.	N.C.	N.C.	N.C.	N.C.	N.C.
Northwest Territories	29	0	0	0	0	0	27	3	2	0	0	0	0	0	2	0	2	0	27	2	2	0
Nunavut	440	0	0	0	0	0	440	0	N.C.	N.C.	N.C.	N.C.	N.C.	N.C.	N.C.	N.C.	N.C.	N.C.	N.C.	N.C.	N.C.	N.C.
<b>Territories</b>	<b>520</b>	<b>0</b>	<b>0</b>	<b>0</b>	<b>0</b>	<b>0</b>	<b>518</b>	<b>8</b>	<b>4</b>	<b>0</b>	<b>0</b>	<b>1</b>	<b>0</b>	<b>0</b>	<b>4</b>	<b>0</b>	<b>4</b>	<b>0</b>	<b>29</b>	<b>2</b>	<b>4</b>	<b>0</b>
<b>CANADA</b>	<b>10612</b>	<b>0</b>	<b>5</b>	<b>8</b>	<b>17</b>	<b>0</b>	<b>9224</b>	<b>296</b>	<b>2996</b>	<b>0</b>	<b>3</b>	<b>3</b>	<b>13</b>	<b>2</b>	<b>3030</b>	<b>59</b>	<b>3044</b>	<b>15</b>	<b>2818</b>	<b>231</b>	<b>2040</b>	<b>81</b>

The data in the RVDSS report represent surveillance data available at the time of writing. Data missing from the current week are denoted by N.R. Data not collected by reporting lab denoted by N.C.

The reporting laboratory previously listed as CHEO - Ottawa is now listed as EORLA to better reflect data submitted by this provider.

Specimens from Yukon (YT) are sent to reference laboratories in British Columbia and reported results reflect specimens identified as originating from YT.

Results from British Columbia comprise of specimens from the following sites: BC Children's and Women's Hospital, Children's and Women's Hospital Laboratory, Fraser Health Medical Microbiology Laboratory, Island Health, Providence Health Care, Powell River Hospital, St. Paul's Hospital, Vancouver General Hospital, Victoria General Hospital, BCCDC Public Health Laboratory, Interior Health Authority sites and Northern Health Authority sites.

Delays in the reporting of data may cause data to change retrospectively.

For British Columbia, only data from subtyped influenza A specimens are included in the weekly number of influenza detections. The sum of A(H1N1)pdm09, A(H3), and A(UnS) positive results may not equal the sum of total Flu A positive results.

**Table 2: Cumulative respiratory virus detections from August 29, 2021 to March 12, 2022 (surveillance week 2021-35 to 2022-10)**

Reporting Laboratory	Flu Tested	A(H1)pdm09 Positive	A(H3) Positive	A(UnS) Positive	Total Flu A Positive	Total Flu B Positive	RSV Tested	RSV Positive	HPIV Tested	HPIV 1 Positive	HPIV 2 Positive	HPIV 3 Positive	HPIV 4 Positive	Other HPIV Positive	ADV Tested	ADV Positive	HMPV Tested	HMPV Positive	EV/RV Tested	EV/RV Positive	HCoV Tested	HCoV Positive
Newfoundland	7846	0	0	0	0	0	7845	89	7848	1	4	116	0	154	7855	26	7842	33	7849	1730	N.C.	N.C.
Prince Edward Island	1927	0	0	0	0	0	1927	161	1882	0	0	152	0	0	1927	51	1927	5	1927	458	1927	102
Nova Scotia	13787	0	1	12	13	4	13786	308	1299	0	2	38	7	0	1313	11	1313	4	1313	94	1313	30
New Brunswick	11687	0	0	6	6	0	7432	263	2599	0	0	23	1	0	2592	13	2599	6	2599	39	2508	5
<b>Atlantic</b>	<b>35247</b>	<b>0</b>	<b>1</b>	<b>18</b>	<b>19</b>	<b>4</b>	<b>30990</b>	<b>821</b>	<b>13628</b>	<b>1</b>	<b>6</b>	<b>329</b>	<b>8</b>	<b>154</b>	<b>13687</b>	<b>101</b>	<b>13681</b>	<b>48</b>	<b>13688</b>	<b>2321</b>	<b>5748</b>	<b>137</b>
Région Nord-Est	15023	1	0	2	3	3	6918	1434	591	0	0	6	1	0	690	15	116	2	N.C.	N.C.	924	14
Québec-Chaudière-Appalaches	4571	0	0	6	6	4	5140	994	1266	0	3	7	6	0	1274	55	1185	52	N.C.	N.C.	1080	44
Centre-du-Québec	5484	0	0	3	3	4	5617	1081	487	0	1	19	0	0	487	23	495	18	N.C.	N.C.	480	9
Montréal-Laval	16943	0	0	36	36	4	16817	2440	5626	6	4	21	5	0	5625	340	5623	330	N.C.	N.C.	5622	69
Ouest du Québec	4255	0	1	7	8	0	4212	929	76	0	0	3	3	0	69	5	65	1	N.C.	N.C.	65	1
Montérégie	2587	0	0	3	3	0	2570	386	0	0	0	0	0	0	0	0	0	0	N.C.	N.C.	0	0
<b>Province of Québec</b>	<b>48863</b>	<b>1</b>	<b>1</b>	<b>57</b>	<b>59</b>	<b>15</b>	<b>41274</b>	<b>7264</b>	<b>8046</b>	<b>6</b>	<b>8</b>	<b>56</b>	<b>15</b>	<b>0</b>	<b>8145</b>	<b>438</b>	<b>7484</b>	<b>403</b>	<b>N.C.</b>	<b>N.C.</b>	<b>8171</b>	<b>137</b>
P.H.O.L. - Ottawa	6427	2	1	0	3	0	6427	1437	6427	0	0	0	0	728	6427	311	6426	38	6427	2205	6426	261
EORLA	5151	0	0	1	1	0	5126	601	697	0	2	19	0	0	697	13	378	3	697	127	355	16
P.H.O.L. - Kingston	1141	0	0	0	0	0	1140	120	1139	0	0	0	0	129	1139	19	1134	2	1139	283	1134	79
UHN / Mount Sinai Hospital	13032	0	0	10	10	2	13032	89	418	0	0	0	0	0	418	0	418	0	418	11	418	2
P.H.O.L. - Toronto	7061	1	19	1	21	0	7037	265	7037	0	0	0	0	265	7040	88	7036	13	7037	885	7037	211
Sick Kids Hospital - Toronto	839	0	0	0	0	0	0	0	839	0	2	68	1	0	839	12	839	1	839	233	839	10
Sunnybrook & Women's College HSC	0	0	0	0	0	0	0	0	0	0	0	0	0	0	0	0	0	0	0	0	0	0
P.H.O.L. - Sault Ste. Marie	259	0	1	0	1	0	257	5	257	0	0	0	0	7	257	3	257	1	257	48	257	17
P.H.O.L. - Timmins	320	0	0	0	0	0	320	14	320	0	0	0	0	18	320	1	320	0	320	30	320	26
St. Joseph's - London	11034	0	0	16	16	0	11037	750	9480	0	0	7	0	84	9480	112	9480	9	9434	465	505	2
P.H.O.L. - London	2872	0	6	0	6	0	2865	452	2865	0	0	0	0	154	2865	64	2864	10	2865	402	2864	215
P.H.O.L. - Orillia	710	0	1	0	1	0	710	103	710	0	0	0	0	41	710	24	707	6	710	175	707	51
P.H.O.L. - Thunder Bay	252	0	0	0	0	0	252	18	252	0	0	0	0	21	252	0	252	0	252	49	252	29
P.H.O.L. - Sudbury	264	0	0	0	0	0	264	10	264	0	0	0	0	9	264	1	264	2	264	29	264	8
P.H.O.L. - Hamilton	1373	0	7	0	7	0	1365	68	1365	0	0	0	0	43	1366	10	1365	6	1365	203	1365	79
P.H.O.L. - Peterborough	525	0	0	0	0	0	525	44	518	0	0	0	0	11	518	1	516	0	518	85	516	35
St. Joseph's - Hamilton	16750	0	4	7	11	1	16744	1603	16744	2	0	648	0	0	16744	176	16744	27	16744	1661	0	0
<b>Province of Ontario</b>	<b>68010</b>	<b>3</b>	<b>39</b>	<b>35</b>	<b>77</b>	<b>3</b>	<b>67101</b>	<b>5579</b>	<b>49332</b>	<b>2</b>	<b>4</b>	<b>742</b>	<b>1</b>	<b>1510</b>	<b>49336</b>	<b>835</b>	<b>49000</b>	<b>118</b>	<b>49286</b>	<b>6891</b>	<b>23259</b>	<b>1041</b>
Manitoba	44580	1	15	8	24	0	44580	758	1681	1	5	70	0	0	1681	23	2783	6	1681	205	2589	54
Province of Saskatchewan	20620	2	9	20	31	0	20594	442	3163	0	1	195	28	0	3162	55	3162	6	3162	434	3160	192
Province of Alberta	56485	0	11	37	48	2	22652	2374	22652	0	22	653	140	0	22652	207	22652	61	22652	2872	22652	1252
<b>Prairies</b>	<b>121685</b>	<b>3</b>	<b>35</b>	<b>65</b>	<b>103</b>	<b>2</b>	<b>87826</b>	<b>3574</b>	<b>27496</b>	<b>1</b>	<b>28</b>	<b>918</b>	<b>168</b>	<b>0</b>	<b>27495</b>	<b>285</b>	<b>28597</b>	<b>73</b>	<b>27495</b>	<b>3511</b>	<b>28401</b>	<b>1498</b>
<b>British Columbia</b>	<b>147605</b>	<b>4</b>	<b>38</b>	<b>3</b>	<b>173</b>	<b>85</b>	<b>145007</b>	<b>8527</b>	<b>17105</b>	<b>6</b>	<b>7</b>	<b>1050</b>	<b>172</b>	<b>143</b>	<b>17105</b>	<b>316</b>	<b>17101</b>	<b>65</b>	<b>16741</b>	<b>2815</b>	<b>16790</b>	<b>405</b>
Yukon	4877	0	1	0	4	7	4892	289	N.C.	N.C.	N.C.	N.C.	N.C.	N.C.	N.C.	N.C.	N.C.	N.C.	N.C.	N.C.	N.C.	N.C.
Northwest Territories	747	0	0	0	0	0	699	26	71	0	0	1	0	0	71	2	71	0	698	98	71	0
Nunavut	14571	0	0	0	0	0	14557	8	N.C.	N.C.	N.C.	N.C.	N.C.	N.C.	N.C.	N.C.	N.C.	N.C.	N.C.	N.C.	N.C.	N.C.
<b>Territories</b>	<b>20195</b>	<b>0</b>	<b>1</b>	<b>0</b>	<b>4</b>	<b>7</b>	<b>20148</b>	<b>323</b>	<b>92</b>	<b>0</b>	<b>0</b>	<b>2</b>	<b>0</b>	<b>0</b>	<b>92</b>	<b>3</b>	<b>92</b>	<b>0</b>	<b>719</b>	<b>106</b>	<b>89</b>	<b>0</b>
<b>CANADA</b>	<b>441605</b>	<b>11</b>	<b>115</b>	<b>178</b>	<b>435</b>	<b>116</b>	<b>392346</b>	<b>26088</b>	<b>115699</b>	<b>16</b>	<b>53</b>	<b>3097</b>	<b>364</b>	<b>1807</b>	<b>115860</b>	<b>1978</b>	<b>115955</b>	<b>707</b>	<b>107929</b>	<b>15644</b>	<b>82458</b>	<b>3218</b>

The data in the RVDSS report represent surveillance data available at the time of writing. Data not collected by reporting lab denoted by N.C.

Note: Included in the cumulative detections this season are 11 co-infections of influenza A and B (total of 22 detections) that are suspected to be associated with recent live attenuated influenza vaccine (LAIV) receipt. Co-infections known or reported to be associated with recent LAIV are removed by the submitting laboratory or by PHAC beginning in week 44 as they do not represent community transmission of seasonal influenza viruses.

The reporting laboratory previously listed as CHEO - Ottawa is now listed as EORLA to better reflect data submitted by this provider.

Specimens from Yukon (YT) are sent to reference laboratories in British Columbia and reported results reflect specimens identified as originating from YT.

Results from British Columbia comprise of specimens from the following sites: BC Children's and Women's Hospital, Children's and Women's Hospital Laboratory, Fraser Health Medical Microbiology Laboratory, Island Health, Providence Health Care, Powell River Hospital, St. Paul's Hospital, Vancouver General Hospital, Victoria General Hospital, BCCDC Public Health Laboratory, Interior Health Authority sites and Northern Health Authority sites.

Delays in the reporting of data may cause data to change retrospectively. Due to these delays, the sum of weekly report totals do not add up to cumulative totals.

For British Columbia, only data from subtyped influenza A specimens are included in the weekly number of influenza detections. The sum of A(H1N1)pdm09, A(H3), and A(UnS) positive results may not equal the sum of total Flu A positive results.

**Figure 2: Number of positive respiratory virus tests reported by participating laboratories in Canada by surveillance week**

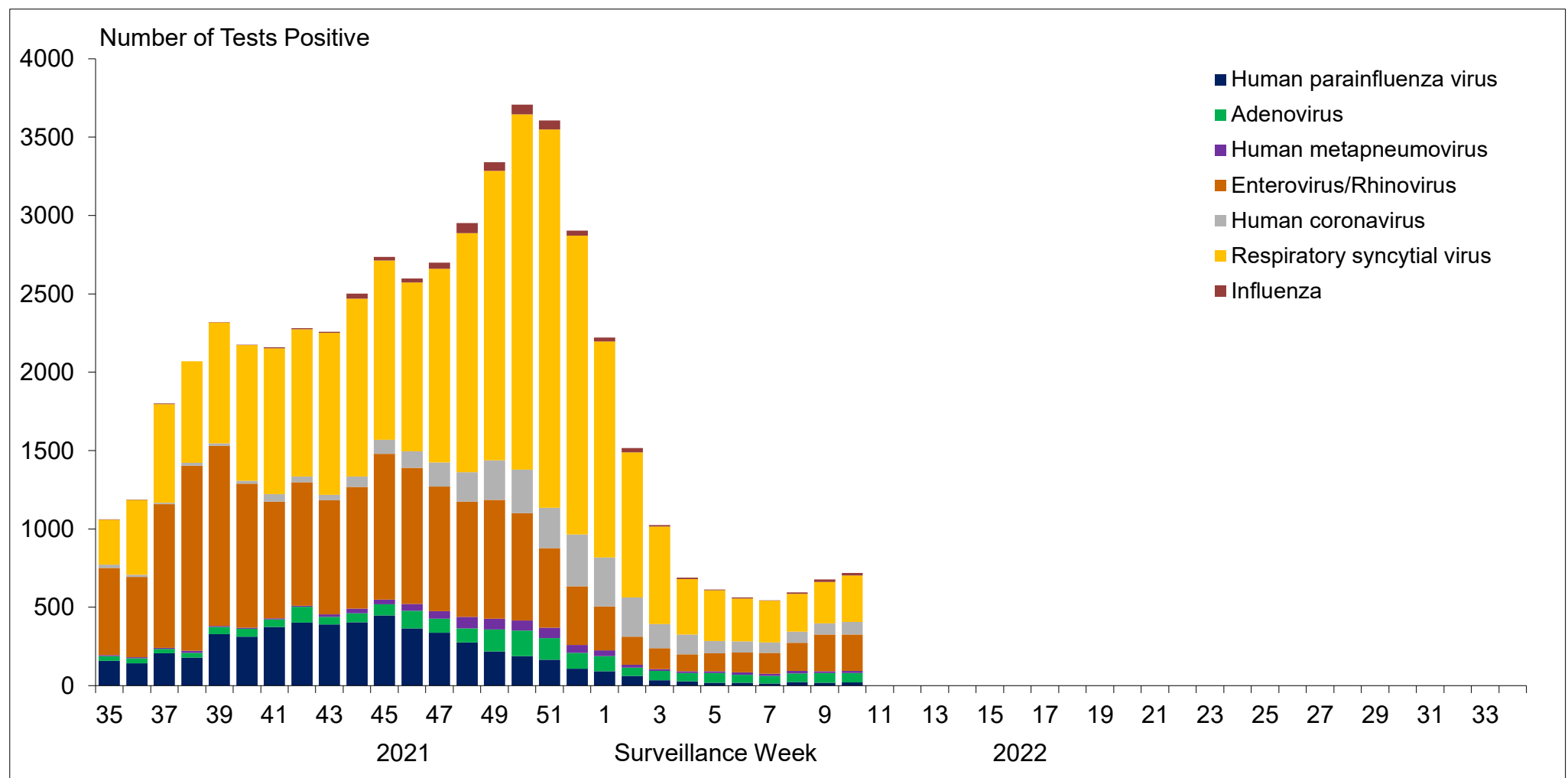


Figure 3: Positive Influenza (Flu) tests (%) in Canada by region by surveillance week

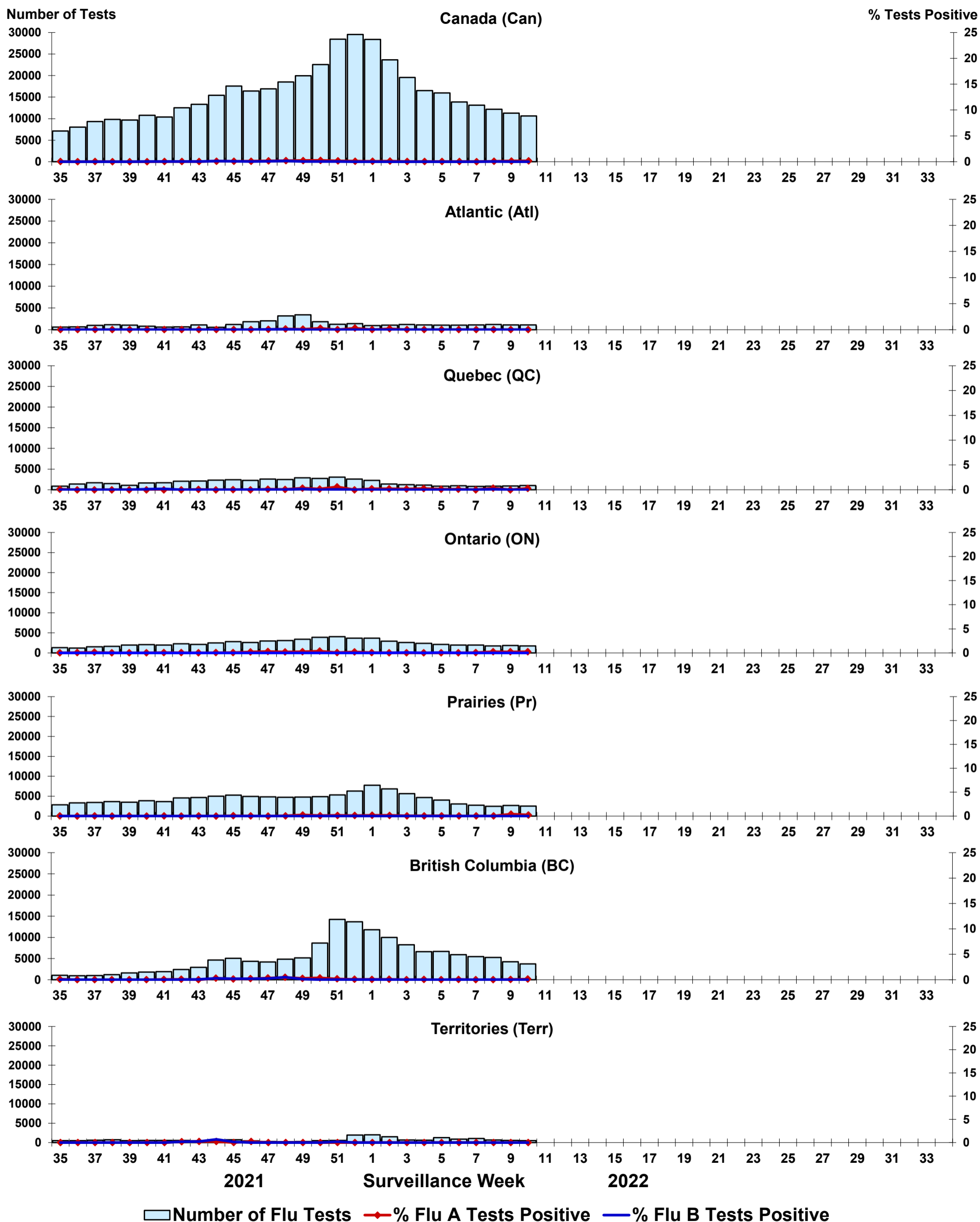


Figure 4: Positive Respiratory syncytial virus (RSV) tests (%) in Canada by region by surveillance week

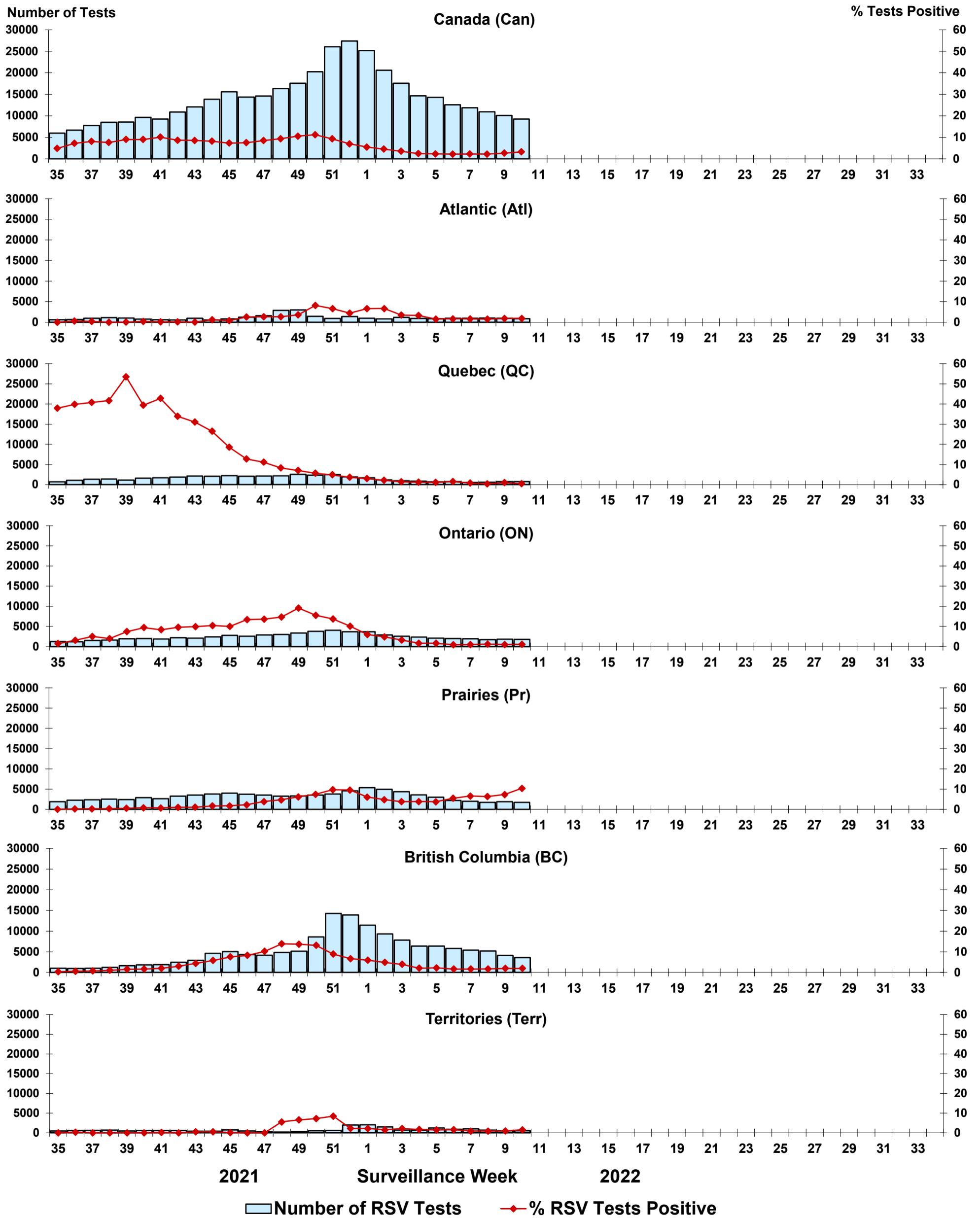


Figure 5: Positive Human parainfluenza virus (HPIV) tests (%) in Canada by region by surveillance week

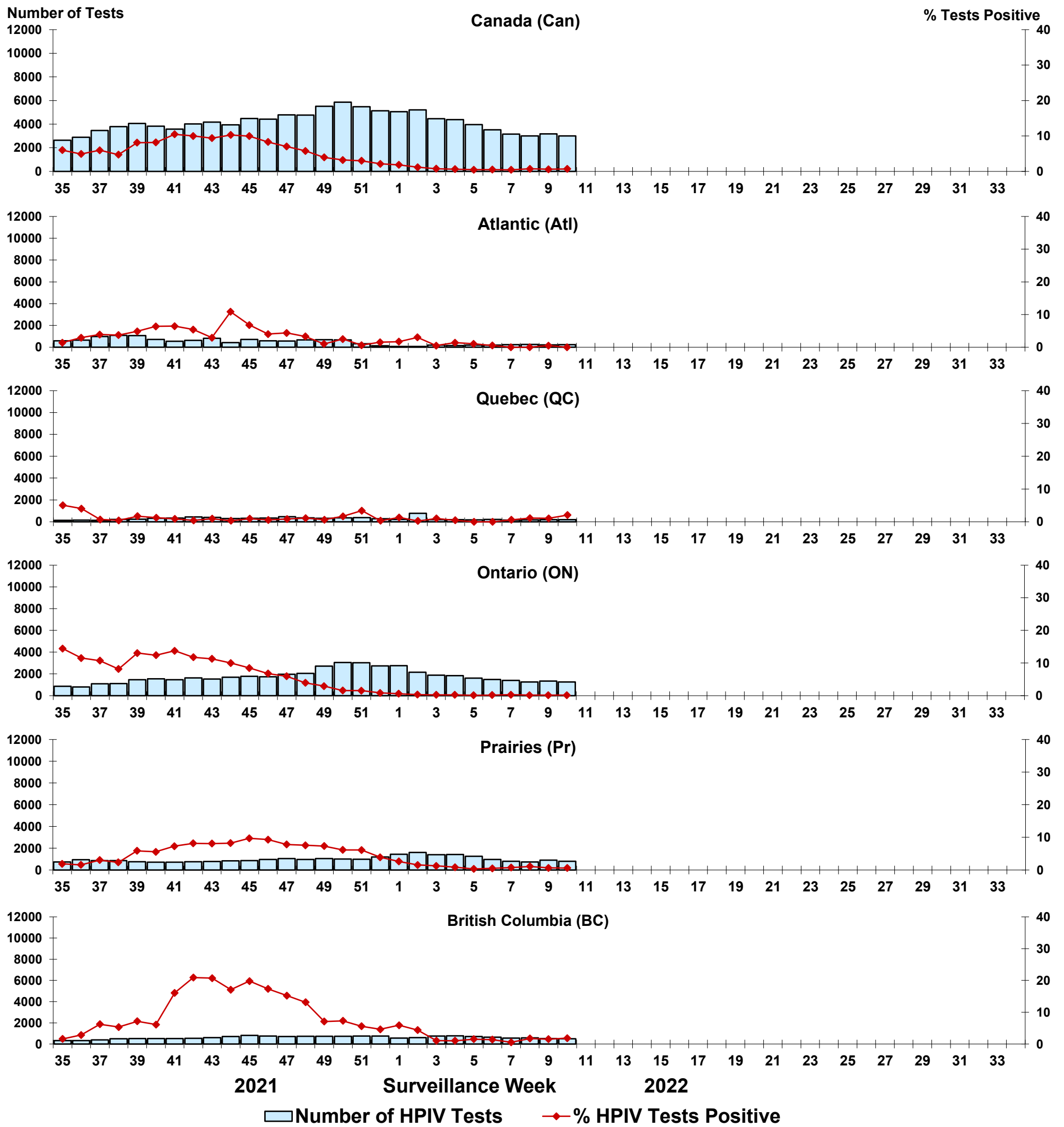




Figure 6: Positive Adenovirus (ADV) tests (%) in Canada by region by surveillance week

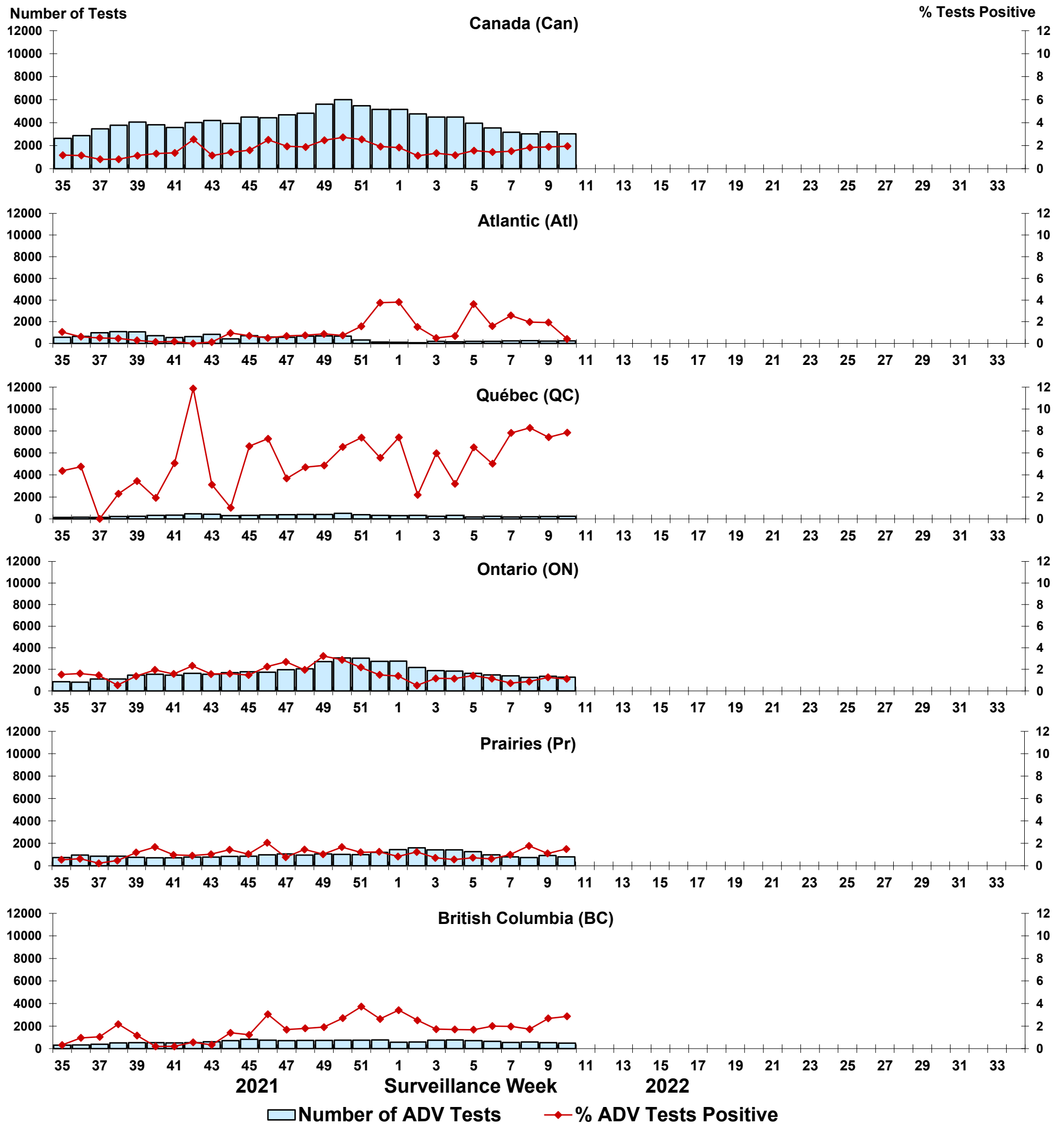


Figure 7: Positive Human metapneumovirus (HMPV) tests (%) in Canada by region by surveillance week

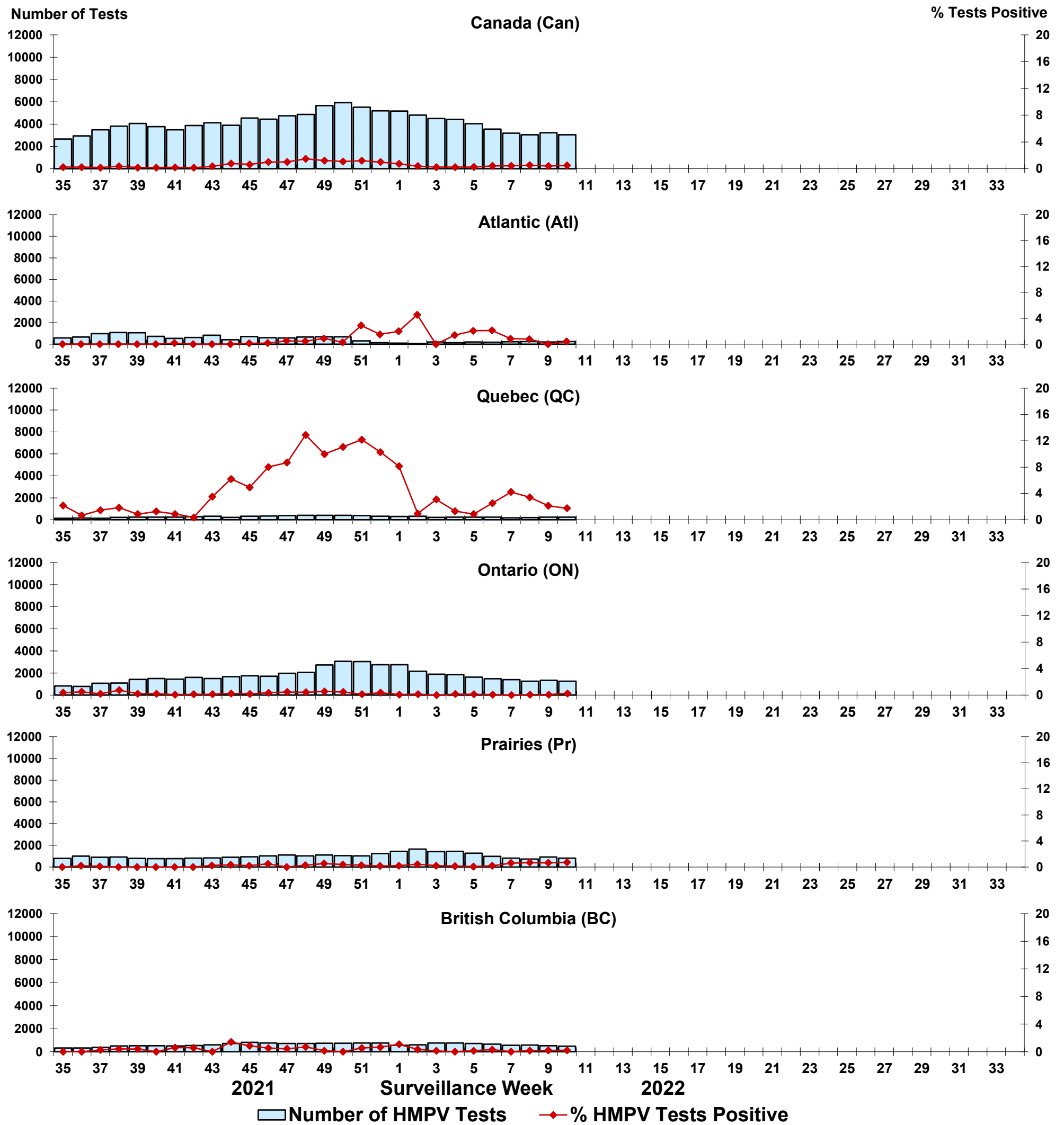


Figure 8: Positive Enterovirus/Rhinovirus (EV/RV) tests (%) in Canada by region by surveillance week

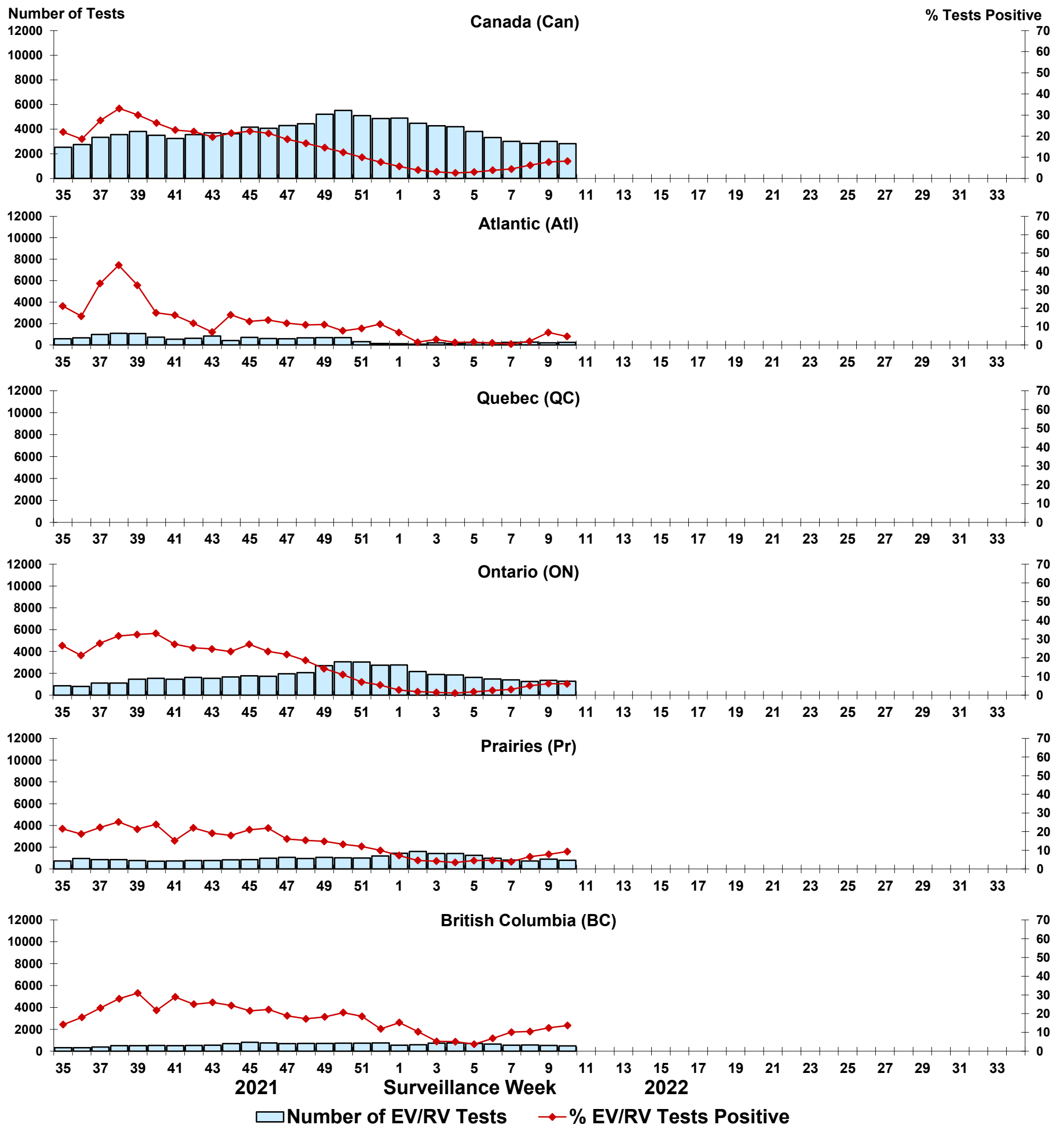


Figure 9: Positive Human coronavirus (HCoV) tests (%) in Canada by region by surveillance week

