

RESPIRATORY VIRUS DETECTION REPORT

March 27 to April 2, 2022
(Surveillance Week 2022-13)



In this Respiratory Virus Report, the number of detections of coronavirus reflects only seasonal human coronaviruses, not the novel pandemic coronavirus (SARS-CoV-2) that causes COVID-19. For information on COVID-19, see the [Coronavirus disease \(COVID-19\): Outbreak update](#).

Overall Summary

Detections of seasonal respiratory viruses have increased since February 2022. Activity of most respiratory viruses is within or below expected levels for this time of year.

- Respiratory syncytial virus (403 detections; 4.2% positive) is the most common seasonal respiratory virus detected in Canada, but activity is below expected levels.
- A total of 233 influenza detections were reported (233 influenza A, 0 influenza B).
 - Detections of influenza have increased in recent weeks; however, the overall number of weekly detections remain low.
- Detections of other respiratory viruses are low.
- The number of tests performed for all viruses were within or above expected levels.
- 32/34 sentinel laboratories reported surveillance data.

Abbreviations

Flu: Influenza

Flu A(H1N1)pdm09: Influenza A(H1N1)pdm09

Flu A(H3): Influenza A(H3N2)

Flu A (UnS): Influenza A(Unsubtyped)

RSV: Respiratory syncytial virus

HPIV: Human parainfluenza virus

HMPV: Human metapneumovirus

ADV: Adenovirus

EV/RV: Enterovirus/Rhinovirus

HCoV: Human coronavirus

Atl: Atlantic Canada

BC: British Columbia

Can: Canada

EORLA: Eastern Ontario Regional Laboratory Association

HSC: Health Sciences Centre

N.C.: Data not collected

N.R.: Data not reported for current week

ON: Ontario

PR: Prairies

P.H.O.L.: Public Health Ontario Laboratory

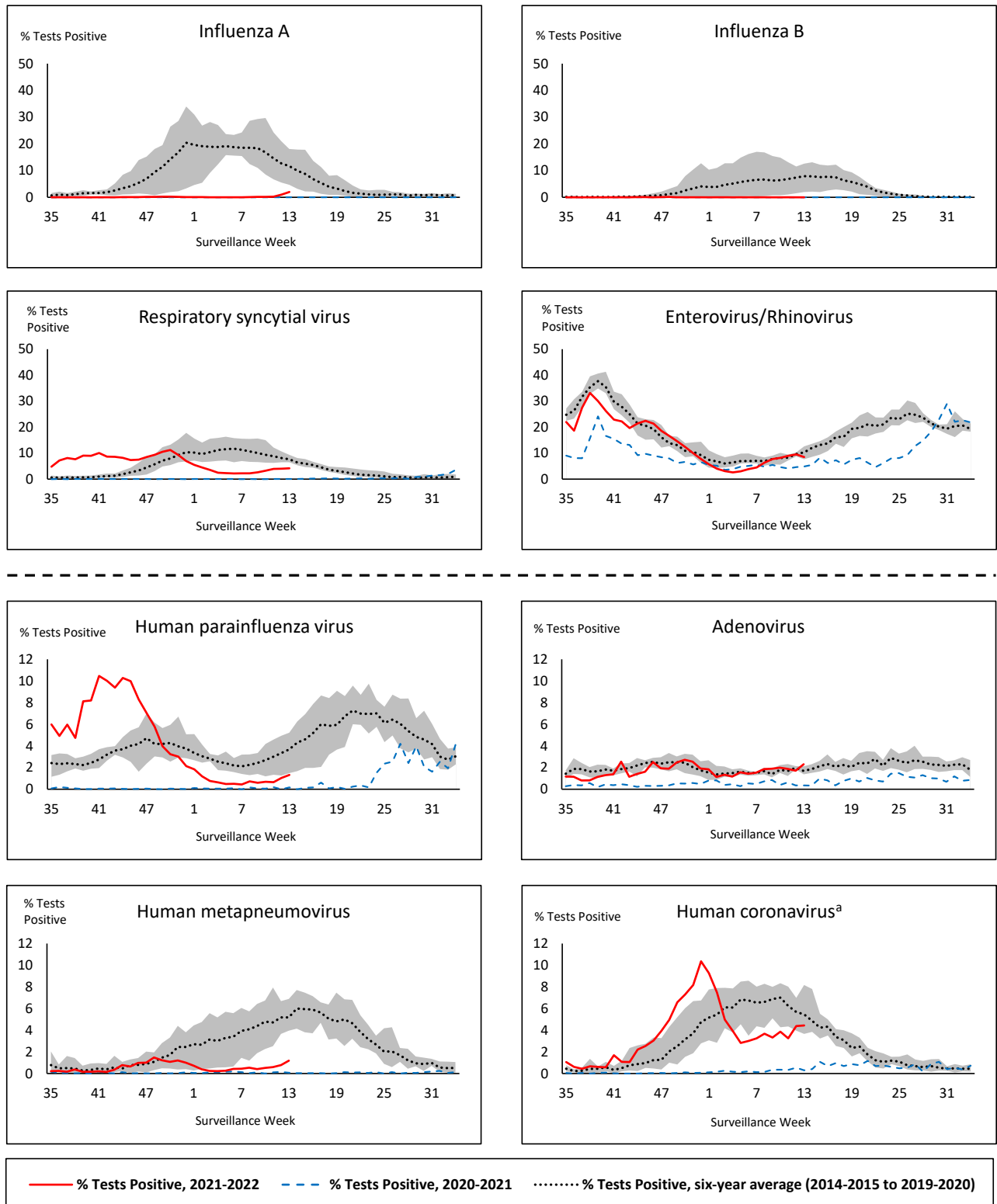
QC: Quebec

Terr: Territories of Canada

UHN: University Health Network



Figure 1: Positive respiratory virus tests (%) reported by participating laboratories in Canada by surveillance week compared to average and range from 2014-2015 to 2019-2020 season



Shaded area represents the maximum and minimum % of respiratory virus tests positive reported by week from seasons 2014-2015 to 2019-2020

Note: Data from week 11 of the 2019-2020 season onwards are excluded from the historical comparison due to the COVID-19 pandemic

Note: % Tests Positive scale changes across the dashed line

^a Human coronavirus excludes human coronaviruses SARS-CoV, MERS-CoV and SARS-CoV-2; Includes seasonal human coronaviruses HCoV-229E, HCoV-OC43, HCoV-NL63, HCoV-HKU1.

Table 1: Respiratory virus detections for the week ending April 2, 2022 (surveillance week 2022-13)

Reporting Laboratory	Flu Tested	A(H1)pdm09 Positive	A(H3) Positive	A(UnS) Positive	Total Flu A Positive	Total Flu B Positive	RSV Tested	RSV Positive	HPIV Tested	HPIV 1 Positive	HPIV 2 Positive	HPIV 3 Positive	HPIV 4 Positive	Other HPIV Positive	ADV Tested	ADV Positive	HMPV Tested	HMPV Positive	EV/RV Tested	EV/RV Positive	HCoV Tested	HCoV Positive
Newfoundland	144	0	0	0	0	0	144	1	144	0	2	0	0	0	144	0	144	0	144	8	N.C.	N.C.
Prince Edward Island	31	0	0	0	0	0	31	8	31	0	0	1	0	0	31	0	31	5	31	8	31	0
Nova Scotia	639	0	0	4	4	0	639	0	21	0	0	0	0	0	21	1	21	0	21	3	21	0
New Brunswick	510	0	0	0	0	0	300	0	31	0	0	0	0	0	31	0	31	0	31	2	31	1
Atlantic	1324	0	0	4	4	0	1114	9	227	0	2	1	0	0	227	1	227	5	227	21	83	1
Région Nord-Est	555	0	0	4	4	0	89	0	1	0	0	0	0	0	1	0	1	0	N.C.	N.C.	44	1
Québec-Chaudière-Appalaches	101	0	0	9	9	0	104	0	28	0	0	0	2	0	68	4	68	2	N.C.	N.C.	62	1
Centre-du-Québec	139	0	0	8	8	0	131	0	19	0	1	0	0	0	19	4	19	1	N.C.	N.C.	19	0
Montréal-Laval	526	0	2	21	23	0	525	1	200	0	4	1	0	0	200	17	200	2	N.C.	N.C.	200	5
Ouest du Québec	109	0	0	2	2	0	109	0	3	0	1	0	0	0	3	1	3	0	N.C.	N.C.	3	0
Montérégie	54	0	0	5	5	0	54	0	0	0	0	0	0	0	0	0	0	0	N.C.	N.C.	0	0
Province of Québec	1484	0	2	49	51	0	1012	1	251	0	6	1	2	0	291	26	291	5	N.C.	N.C.	328	7
P.H.O.L. - Ottawa	26	0	0	0	0	0	26	0	26	0	0	0	0	1	26	0	26	0	26	8	26	1
EORLA	102	0	0	0	0	0	102	0	35	0	0	0	0	0	35	1	35	0	35	7	35	0
P.H.O.L. - Kingston	73	0	56	0	56	0	18	0	18	0	0	0	0	0	18	0	18	0	18	3	18	1
UHN / Mount Sinai Hospital	475	0	0	3	3	0	475	2	11	0	0	0	0	0	11	0	11	0	11	0	11	1
P.H.O.L. - Toronto	244	0	4	0	4	0	240	2	240	0	0	0	0	3	240	5	240	1	240	19	240	12
Sick Kids Hospital - Toronto	N.R.	N.R.	N.R.	N.R.	N.R.	N.R.	N.R.	N.R.	N.R.	N.R.	N.R.	N.R.	N.R.	N.R.	N.R.	N.R.	N.R.	N.R.	N.R.	N.R.	N.R.	N.R.
Sunnybrook & Women's College HSC	N.R.	N.R.	N.R.	N.R.	N.R.	N.R.	N.R.	N.R.	N.R.	N.R.	N.R.	N.R.	N.R.	N.R.	N.R.	N.R.	N.R.	N.R.	N.R.	N.R.	N.R.	N.R.
P.H.O.L. - Sault Ste. Marie	2	0	0	0	0	0	2	0	2	0	0	0	0	0	2	0	2	0	2	0	2	0
P.H.O.L. - Timmins	11	0	0	0	0	0	11	1	11	0	0	0	0	0	11	0	11	0	11	0	11	0
St. Joseph's - London	361	0	0	7	7	0	361	4	361	0	0	0	0	0	361	4	361	9	361	16	1	0
P.H.O.L. - London	58	0	1	1	2	0	58	0	58	0	0	0	0	1	58	1	58	1	58	10	58	9
P.H.O.L. - Orillia	10	0	0	0	0	0	10	0	10	0	0	0	0	0	10	0	10	0	10	2	10	0
P.H.O.L. - Thunder Bay	9	0	0	0	0	0	9	0	9	0	0	0	0	0	9	0	9	0	9	0	9	1
P.H.O.L. - Sudbury	5	0	1	0	1	0	5	0	5	0	0	0	0	0	5	0	5	0	5	1	5	0
P.H.O.L. - Hamilton	21	0	1	0	1	0	21	0	21	0	0	0	0	0	21	1	21	0	21	2	21	1
P.H.O.L. - Peterborough	4	0	0	0	0	0	4	0	4	0	0	0	0	0	4	0	4	0	4	0	4	0
St. Joseph's - Hamilton	553	0	0	7	7	0	553	3	553	0	0	0	0	0	553	3	553	2	553	32	0	0
Province of Ontario	1954	0	63	18	81	0	1895	12	1364	0	0	0	0	5	1364	15	1364	13	1364	100	451	26
Province of Manitoba	873	0	2	0	2	0	873	68	111	0	0	0	1	0	111	2	131	0	111	11	131	5
Province of Saskatchewan	532	0	0	15	15	0	531	112	160	0	0	1	1	0	160	1	160	4	160	26	160	4
Province of Alberta	1727	1	15	45	61	0	687	113	687	0	2	0	5	0	687	16	687	8	687	52	687	16
Prairies	3132	1	17	60	78	0	2091	293	958	0	2	1	7	0	958	19	978	12	958	89	978	25
British Columbia	3655	0	5	0	18	0	3435	68	539	0	1	3	9	4	539	17	539	5	524	56	524	46
Yukon	51	0	0	0	0	0	51	1	N.C.	N.C.	N.C.	N.C.	N.C.	N.C.	51	0	N.C.	N.C.	N.C.	N.C.	N.C.	N.C.
Northwest Territories	67	0	1	0	1	0	67	17	1	0	0	0	0	0	1	0	1	0	67	1	1	0
Nunavut	50	0	0	0	0	0	49	2	N.C.	N.C.	N.C.	N.C.	N.C.	N.C.	N.C.	N.C.	N.C.	N.C.	N.C.	N.C.	N.C.	N.C.
Territories	168	0	1	0	1	0	167	20	2	0	0	0	0	0	2	0	2	0	68	2	2	0
CANADA	11717	1	88	131	233	0	9714	403	3341	0	11	6	18	9	3381	78	3401	40	3141	268	2366	105

The data in the RVDSS report represent surveillance data available at the time of writing. Data missing from the current week are denoted by N.R. Data not collected by reporting lab denoted by N.C.

The reporting laboratory previously listed as CHEO - Ottawa is now listed as EORLA to better reflect data submitted by this provider.

Specimens from Yukon (YT) are sent to reference laboratories in British Columbia and reported results reflect specimens identified as originating from YT.

Results from British Columbia comprise of specimens from the following sites: BC Children's and Women's Hospital, Children's and Women's Hospital Laboratory, Fraser Health Medical Microbiology Laboratory, Island Health, Providence Health Care, Powell River Hospital , St. Paul's Hospital , Vancouver General Hospital, Victoria General Hospital, BCCDC Public Health Laboratory, Interior Health Authority sites and Northern Health Authority sites.

Delays in the reporting of data may cause data to change retrospectively.

For British Columbia, only data from subtyped influenza A specimens are included in the weekly number of influenza detections. The sum of A(H1N1)pdm09, A(H3), and A(UnS) positive results may not equal the sum of total Flu A positive results.

Table 2: Cumulative respiratory virus detections from August 29, 2021 to April 2, 2022 (surveillance week 2021-35 to 2022-13)

Reporting Laboratory	Flu Tested	A(H1)pdm09 Positive	A(H3) Positive	A(UnS) Positive	Total Flu A Positive	Total Flu B Positive	RSV Tested	RSV Positive	HPIV Tested	HPIV 1 Positive	HPIV 2 Positive	HPIV 3 Positive	HPIV 4 Positive	Other HPIV Positive	ADV Tested	ADV Positive	HMPV Tested	HMPV Positive	EV/RV Tested	EV/RV Positive	HCoV Tested	HCoV Positive
Newfoundland	8253	0	0	0	0	0	8252	98	8255	1	7	116	0	154	8262	28	8249	33	8256	1742	N.C.	N.C.
Prince Edward Island	2042	0	0	0	0	0	2042	195	1997	0	0	153	0	0	2042	53	2042	15	2042	479	2042	105
Nova Scotia	15499	0	1	17	18	4	15498	310	1370	0	2	38	11	0	1384	12	1384	5	1384	106	1384	31
New Brunswick	13139	0	0	6	6	0	8251	265	2687	0	0	23	1	0	2680	14	2687	6	2687	42	2596	6
Atlantic	38933	0	1	23	24	4	34043	868	14309	1	9	330	12	154	14368	107	14362	59	14369	2369	6022	142
Région Nord-Est	16456	1	0	6	7	3	7204	1437	592	0	0	6	1	0	691	15	194	4	N.C.	N.C.	1080	17
Québec-Chaudière-Appalaches	4815	0	0	15	15	4	5395	994	1365	0	4	7	9	0	1445	62	1356	59	N.C.	N.C.	1236	45
Centre-du-Québec	5826	0	0	14	14	4	5950	1081	546	0	3	20	0	0	546	29	554	19	N.C.	N.C.	539	13
Montréal-Laval	18098	0	2	67	69	4	18093	2446	6208	6	8	22	5	0	6207	373	6205	333	N.C.	N.C.	6204	77
Ouest du Québec	4507	0	1	10	11	0	4464	929	89	0	1	3	3	0	82	7	78	1	N.C.	N.C.	78	1
Montérégie	2733	0	0	9	9	0	2716	387	0	0	0	0	0	0	0	0	0	0	N.C.	N.C.	0	0
Province of Québec	52435	1	3	121	125	15	43822	7274	8800	6	16	58	18	0	8971	486	8387	416	N.C.	N.C.	9137	153
P.H.O.L. - Ottawa	6485	2	1	0	3	0	6485	1439	6485	0	0	0	0	730	6485	311	6483	38	6485	2216	6483	265
EORLA	5494	0	0	1	1	0	5469	605	780	0	2	19	1	0	780	14	461	3	780	142	438	16
P.H.O.L. - Kingston	1248	0	56	0	56	0	1192	121	1191	0	0	0	0	129	1191	19	1185	2	1191	290	1185	82
UHN / Mount Sinai Hospital	14276	0	0	16	16	2	14276	95	449	0	0	0	0	0	449	0	449	0	449	11	449	4
P.H.O.L. - Toronto	7685	2	26	1	29	0	7653	271	7653	0	0	0	0	274	7656	99	7652	14	7653	938	7653	239
Sick Kids Hospital - Toronto	839	0	0	0	0	0	0	0	839	0	2	68	1	0	839	12	839	1	839	233	839	10
Sunnybrook & Women's College HSC	0	0	0	0	0	0	0	0	0	0	0	0	0	0	0	0	0	0	0	0	0	0
P.H.O.L. - Sault Ste. Marie	280	0	1	0	1	0	278	5	278	0	0	0	0	7	278	3	278	1	278	48	278	18
P.H.O.L. - Timmins	343	0	0	0	0	0	343	18	343	0	0	0	0	18	343	1	343	0	343	31	343	26
St. Joseph's - London	12160	0	0	27	27	0	12163	762	10606	0	0	7	0	86	10606	126	10606	20	10560	530	510	22
P.H.O.L. - London	3002	0	8	1	9	0	2994	452	2994	0	0	0	0	155	2994	68	2993	11	2994	420	2993	228
P.H.O.L. - Orillia	752	0	1	0	1	0	752	104	752	0	0	0	0	41	752	25	749	6	752	188	749	52
P.H.O.L. - Thunder Bay	274	0	0	0	0	0	274	18	274	0	0	0	0	21	274	1	274	0	274	50	274	33
P.H.O.L. - Sudbury	291	0	1	0	1	0	291	11	291	0	0	0	0	9	291	1	291	2	291	31	291	9
P.H.O.L. - Hamilton	1452	0	8	0	8	0	1444	68	1444	0	0	0	0	44	1445	12	1444	6	1444	207	1444	85
P.H.O.L. - Peterborough	542	0	0	0	0	0	542	45	535	0	0	0	0	11	535	1	533	0	535	87	533	39
St. Joseph's - Hamilton	18263	0	4	15	19	1	18257	1615	18257	2	0	650	0	0	18257	185	18257	30	18257	1747	0	0
Province of Ontario	73386	4	106	61	171	3	72413	5629	53171	2	4	744	2	1525	53175	878	52837	134	53125	7169	24462	1108
Manitoba	46605	1	18	8	27	0	46605	925	1979	2	6	74	1	0	1979	30	3119	6	1979	230	2925	65
Province of Saskatchewan	22244	2	33	36	71	0	22215	748	3614	0	1	196	29	0	3613	63	3613	15	3613	503	3611	210
Province of Alberta	61443	1	38	122	161	2	24738	2667	24738	0	25	656	149	0	24738	253	24738	81	24738	3065	24738	1305
Prairies	130292	4	89	166	259	2	93558	4340	30331	2	32	926	179	0	30330	346	31470	102	30330	3798	31274	1580
British Columbia	158370	5	54	5	218	86	155266	8726	18725	6	8	1055	194	150	18725	352	18721	81	18330	3013	18378	512
Yukon	5093	1	1	2	5	7	5108	295	N.C.	N.C.	N.C.	N.C.	N.C.	N.C.	N.C.	N.C.	N.C.	N.C.	N.C.	N.C.	N.C.	N.C.
Northwest Territories	928	0	1	0	1	0	877	70	80	0	0	1	0	0	80	2	80	0	876	104	80	1
Nunavut	15045	0	0	0	0	0	15030	11	N.C.	N.C.	N.C.	N.C.	N.C.	N.C.	N.C.	N.C.	N.C.	N.C.	N.C.	N.C.	N.C.	N.C.
Territories	21066	1	2	2	6	7	21015	376	103	0	0	2	0	0	103	3	103	0	899	113	100	1
CANADA	474482	15	255	378	803	117	420117	27213	125439	17	69	3115	405	1829	125672	2172	125880	792	117053	16462	89373	3496

The data in the RVDSS report represent surveillance data available at the time of writing. Data not collected by reporting lab denoted by N.C.

Note: Included in the cumulative detections this season are 11 co-infections of influenza A and B (total of 22 detections) that are suspected to be associated with recent live attenuated influenza vaccine (LAIV) receipt. Co-infections known or reported to be associated with recent LAIV are removed by the submitting laboratory or by PHAC beginning in week 44 as they do not represent community transmission of seasonal influenza viruses.

The reporting laboratory previously listed as CHEO - Ottawa is now listed as EORLA to better reflect data submitted by this provider.

Specimens from Yukon (YT) are sent to reference laboratories in British Columbia and reported results reflect specimens identified as originating from YT.

Results from British Columbia comprise of specimens from the following sites: BC Children's and Women's Hospital, Children's and Women's Hospital Laboratory, Fraser Health Medical Microbiology Laboratory, Island Health, Providence Health Care, Powell River Hospital, St. Paul's Hospital, Vancouver General Hospital, Victoria General Hospital, BCCDC Public Health Laboratory, Interior Health Authority sites and Northern Health Authority sites.

Delays in the reporting of data may cause data to change retrospectively. Due to these delays, the sum of weekly report totals do not add up to cumulative totals.

For British Columbia, only data from subtyped influenza A specimens are included in the weekly number of influenza detections. The sum of A(H1N1)pdm09, A(H3), and A(UnS) positive results may not equal the sum of total Flu A positive results.

Figure 2: Number of positive respiratory virus tests reported by participating laboratories in Canada by surveillance week

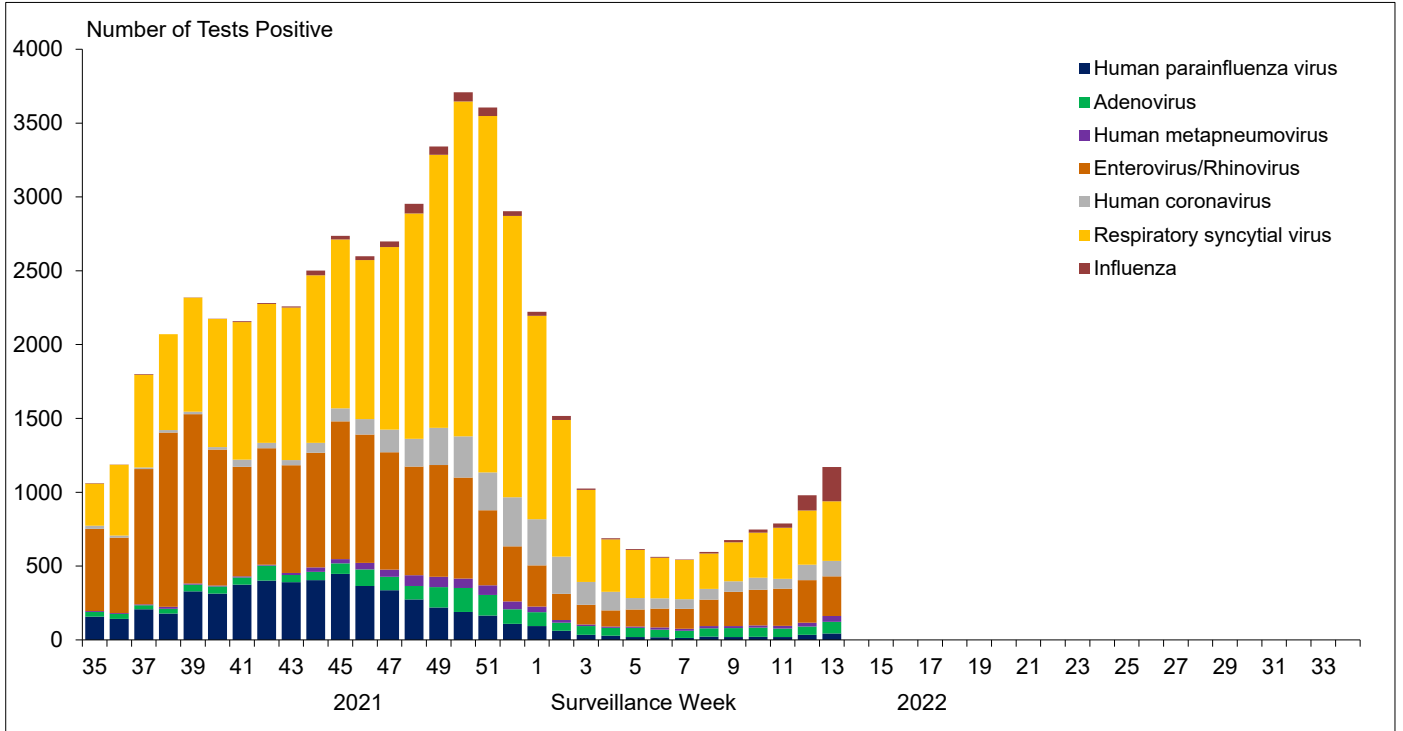


Figure 3: Positive Influenza (Flu) tests (%) in Canada by region by surveillance week

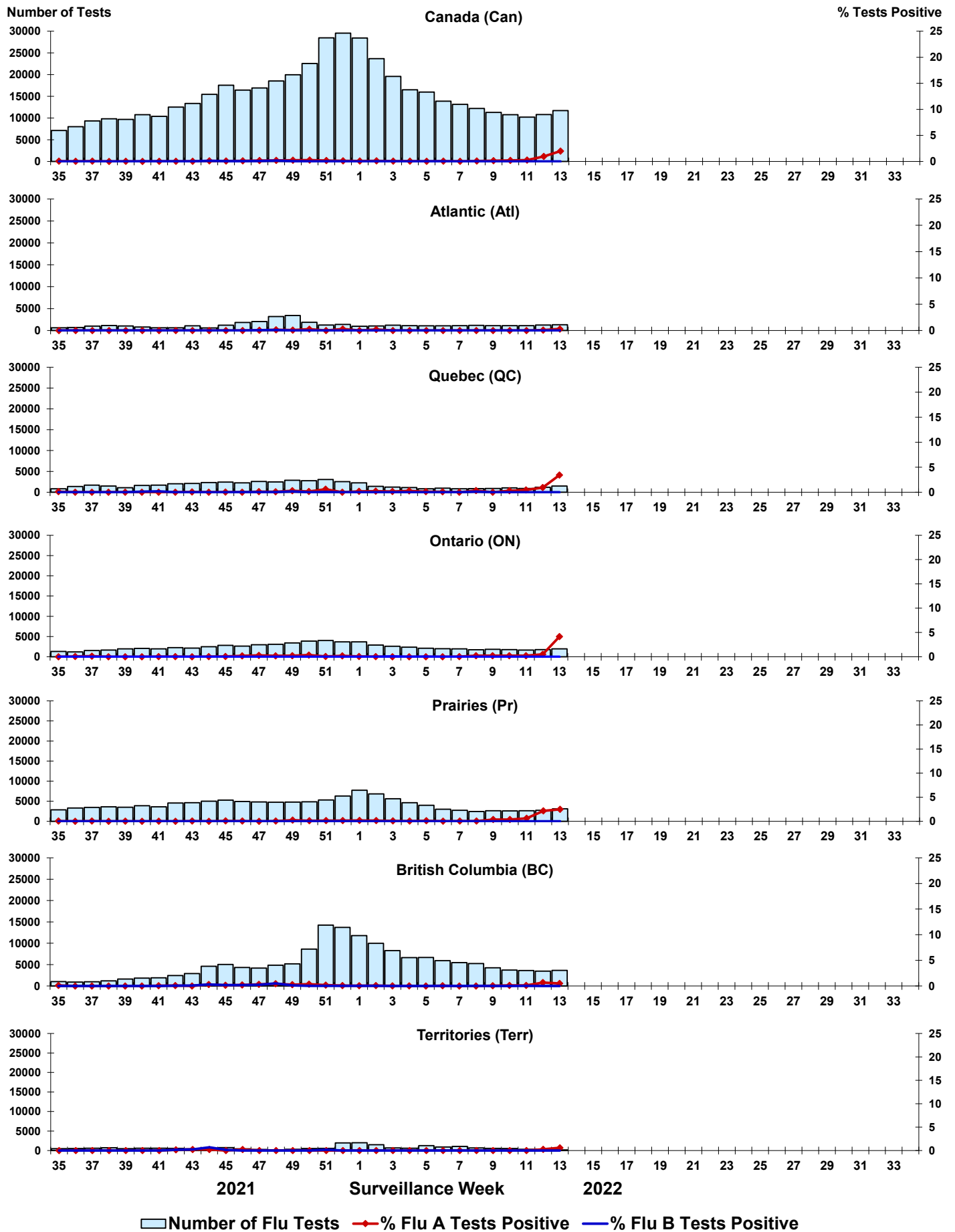


Figure 4: Positive Respiratory syncytial virus (RSV) tests (%) in Canada by region by surveillance week

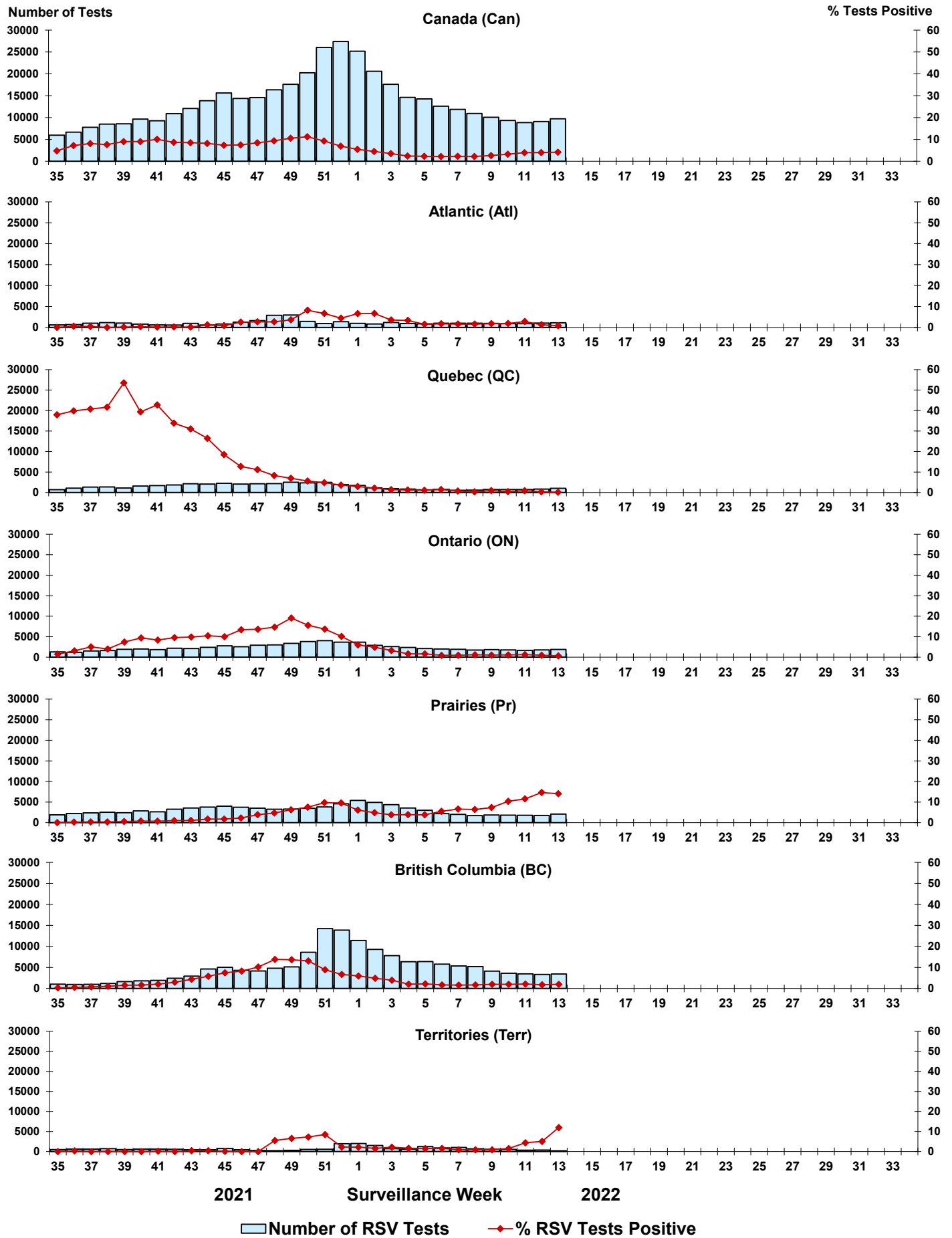


Figure 5: Positive Human parainfluenza virus (HPIV) tests (%) in Canada by region by surveillance week

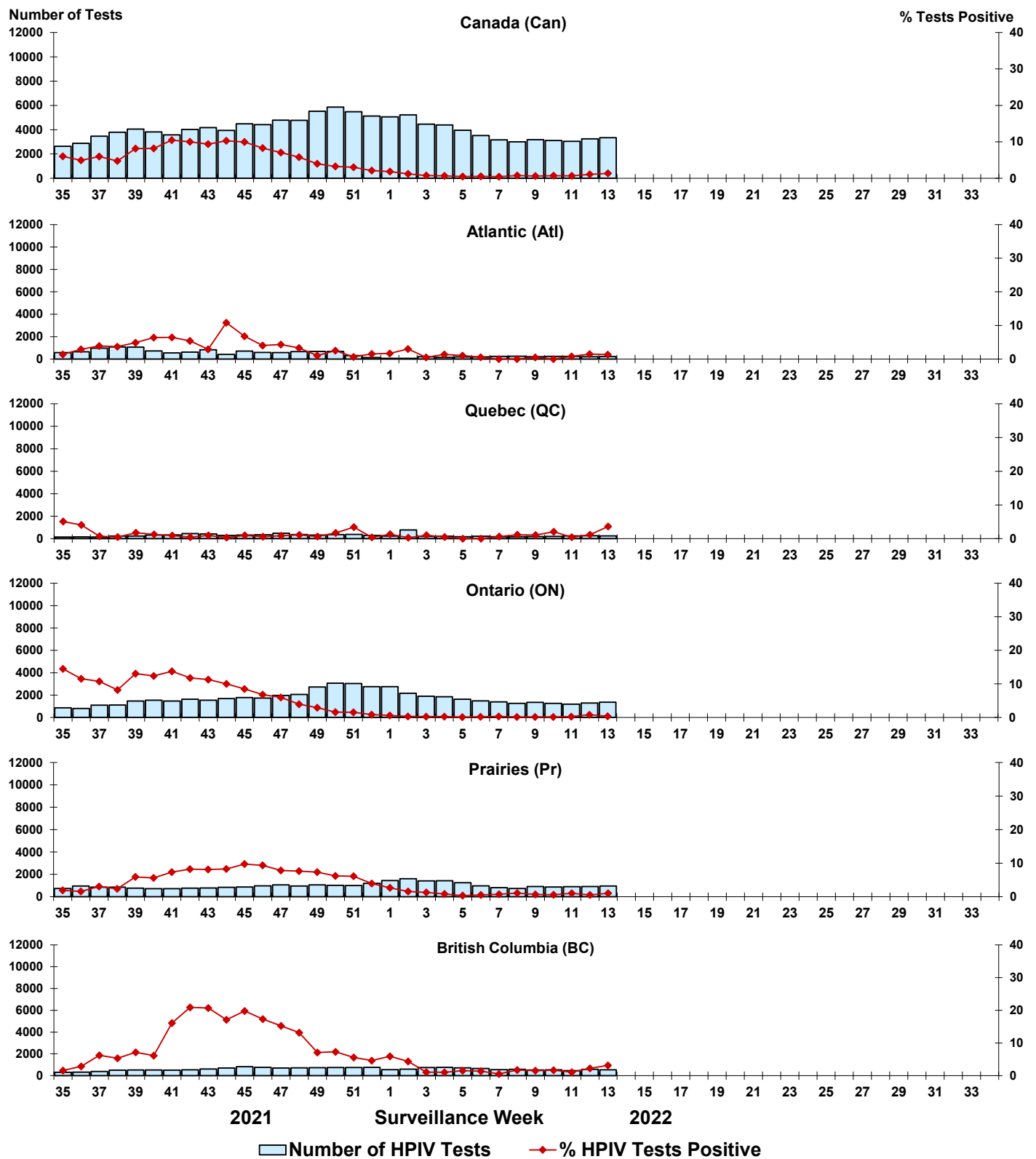


Figure 6: Positive Adenovirus (ADV) tests (%) in Canada by region by surveillance week

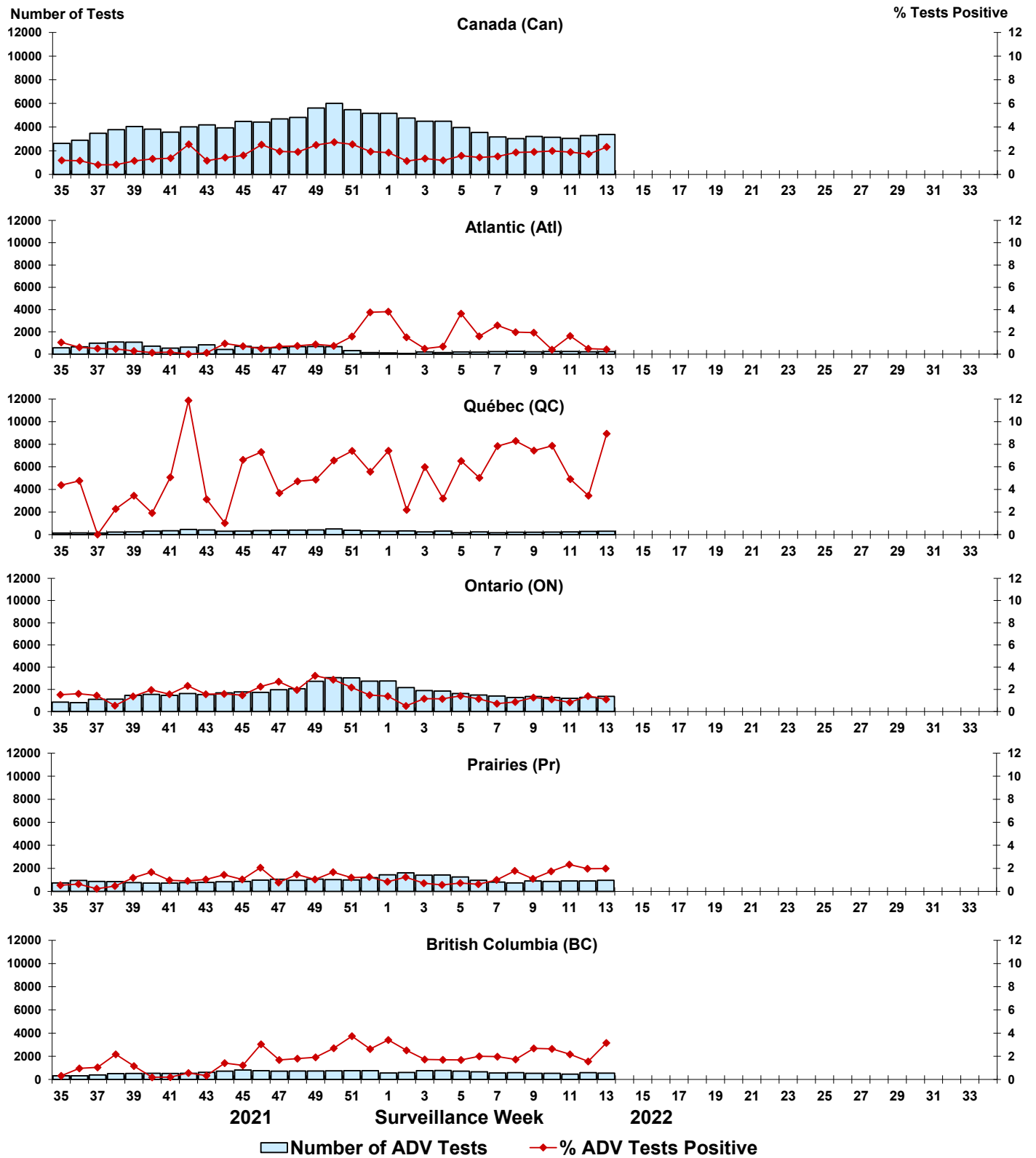


Figure 7: Positive Human metapneumovirus (HMPV) tests (%) in Canada by region by surveillance week

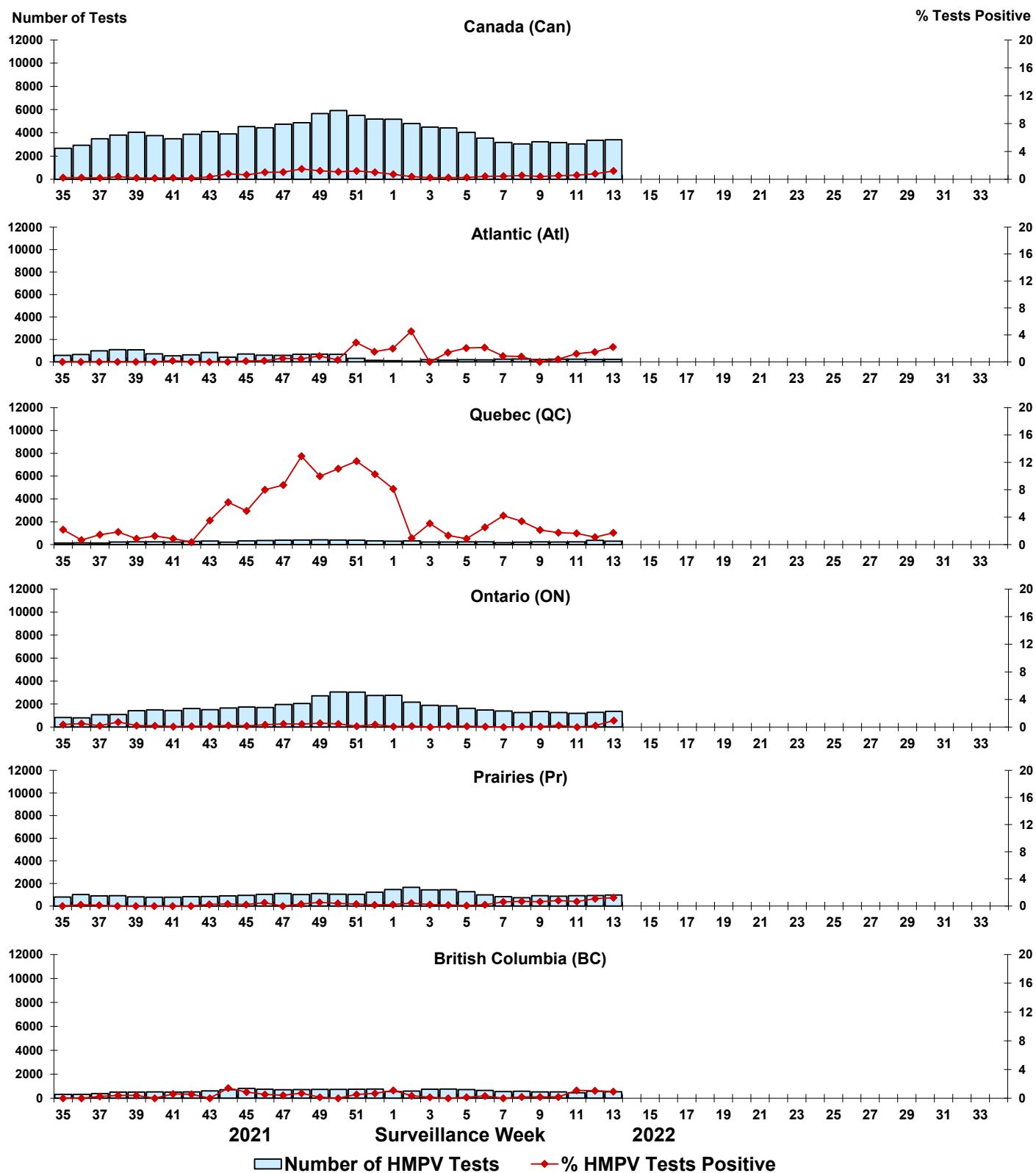


Figure 8: Positive Enterovirus/Rhinovirus (EV/RV) tests (%) in Canada by region by surveillance week

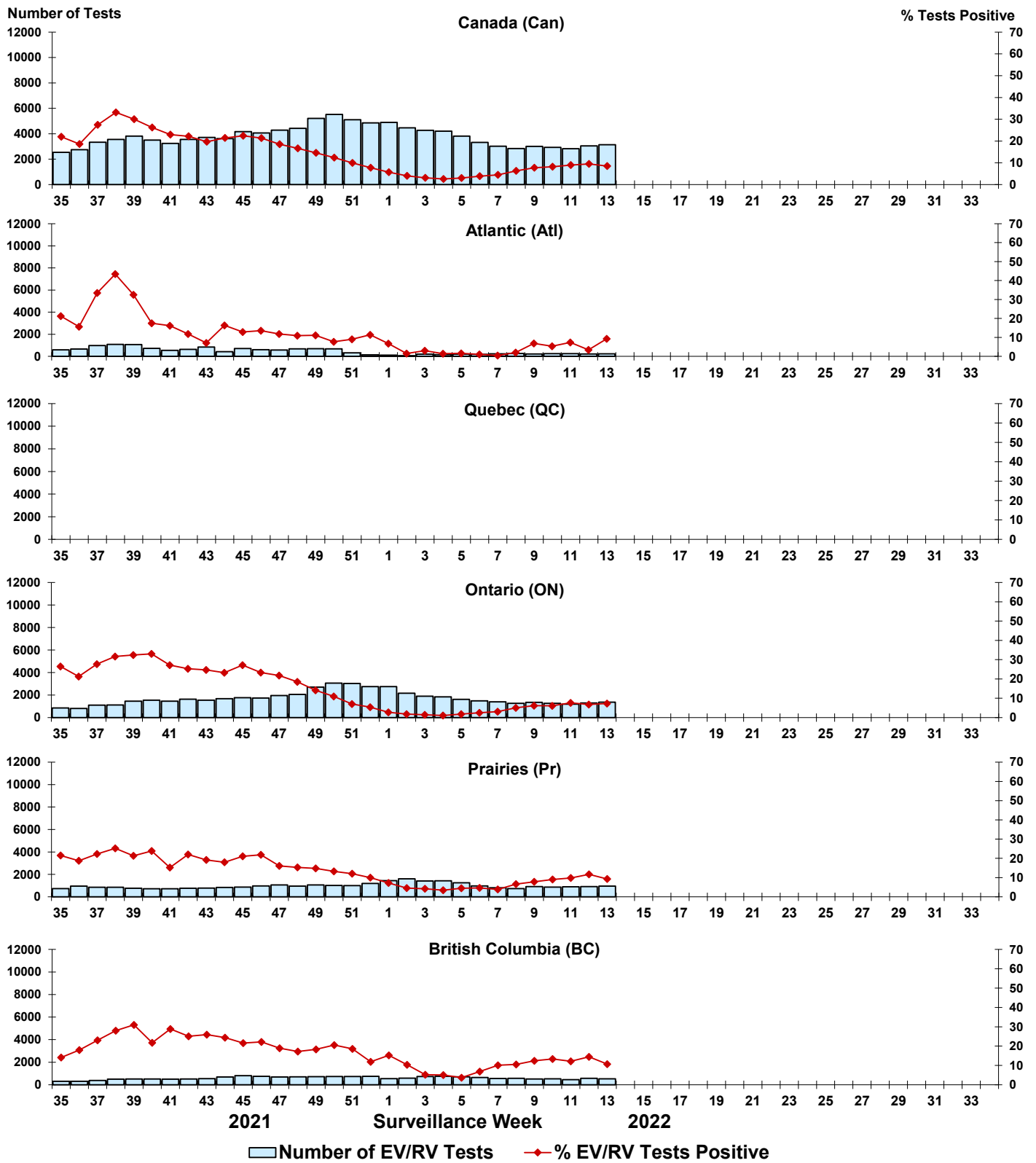


Figure 9: Positive Human coronavirus (HCoV) tests (%) in Canada by region by surveillance week

