

RESPIRATORY VIRUS DETECTION REPORT

August 28 to September 3, 2022
(Surveillance Week 2022-35)



In this Respiratory Virus Report, the number of detections of coronavirus reflects only seasonal human coronaviruses, not the novel pandemic coronavirus (SARS-CoV-2) that causes COVID-19. For information on COVID-19, see the [Coronavirus disease \(COVID-19\): Outbreak update](#).

Overall Summary

Respiratory virus detections are low in Canada, and activity of all viruses is near or below expected levels.

- Enterovirus/Rhinovirus remains the most common seasonal respiratory virus detected in Canada (433 detections; 15.5% positive). Activity remains below expected levels for this time of year.
- Detections of other respiratory viruses are low, but activity is near expected levels.
- 27/34 sentinel laboratories reported surveillance data.

Abbreviations

Flu: Influenza

Flu A(H1N1)pdm09: Influenza A(H1N1)pdm09

Flu A(H3): Influenza A(H3N2)

Flu A (UnS): Influenza A(Unsubtyped)

RSV: Respiratory syncytial virus

HPIV: Human parainfluenza virus

HMPV: Human metapneumovirus

ADV: Adenovirus

EV/RV: Enterovirus/Rhinovirus

HCoV: Human coronavirus

Atl: Atlantic Canada

BC: British Columbia

Can: Canada

EORLA: Eastern Ontario Regional Laboratory Association

HSC: Health Sciences Centre

N.C.: Data not collected

N.R.: Data not reported for current week

ON: Ontario

PR: Prairies

P.H.O.L.: Public Health Ontario Laboratory

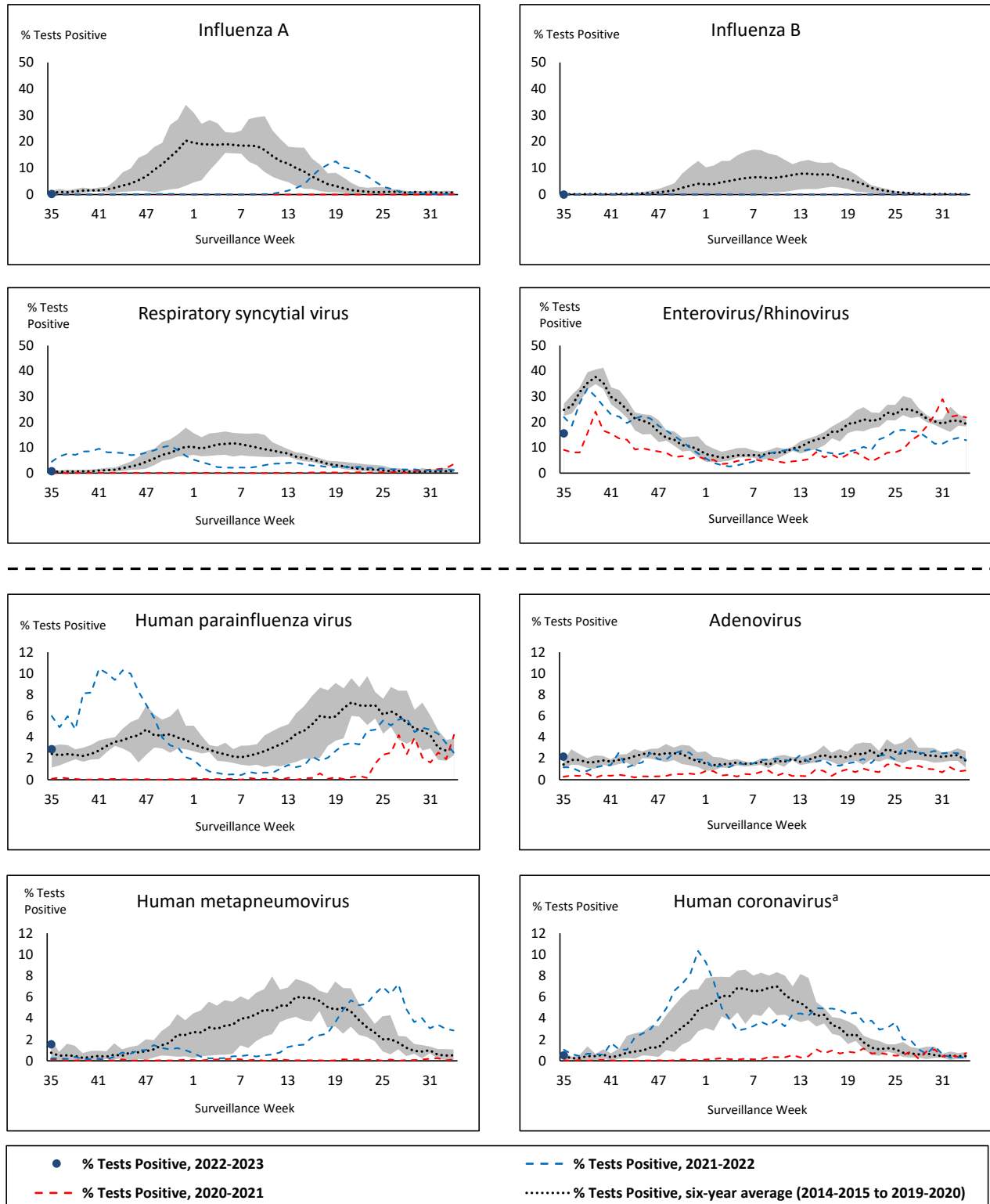
QC: Quebec

Terr: Territories of Canada

UHN: University Health Network



Figure 1: Positive respiratory virus tests (%) reported by participating laboratories in Canada by surveillance week compared to average and range from 2014-2015 to 2019-2020 season



Shaded area represents the maximum and minimum % of respiratory virus tests positive reported by week from seasons 2014-2015 to 2019-2020

Note: Data from week 11 of the 2019-2020 season onwards are excluded from the historical comparison due to the COVID-19 pandemic

Note: % Tests Positive scale changes across the dashed line

^a Human coronavirus excludes human coronaviruses SARS-CoV, MERS-CoV and SARS-CoV-2; Includes seasonal human coronaviruses HCoV-229E, HCoV-OC43, HCoV-NL63, HCoV-HKU1.

Table 1: Respiratory virus detections for the week ending September 3, 2022 (surveillance week 2022-35)

Reporting Laboratory	Flu Tested	A(H1)pdm09 Positive	A(H3) Positive	A(UnS) Positive	Total Flu A Positive	Total Flu B Positive	RSV Tested	RSV Positive	HPIV Tested	HPIV 1 Positive	HPIV 2 Positive	HPIV 3 Positive	HPIV 4 Positive	Other HPIV Positive	ADV Tested	ADV Positive	HMPV Tested	HMPV Positive	EV/RV Tested	EV/RV Positive	HCoV Tested	HCoV Positive	
Newfoundland	171	0	1	0	1	0	171	2	171	0	0	0	0	0	171	4	171	6	171	23	171	0	
Prince Edward Island	48	0	0	0	0	0	48	1	48	0	0	0	0	0	48	2	48	0	48	36	48	1	
Nova Scotia	368	0	0	0	0	0	368	2	22	0	0	0	0	0	22	3	22	0	22	11	22	0	
New Brunswick	345	0	0	0	0	1	245	7	53	0	0	1	0	0	53	9	53	1	53	19	53	1	
Atlantic	932	0	1	0	1	1	832	12	294	0	0	1	0	0	294	18	294	7	294	89	294	2	
Région Nord-Est	N.R.	N.R.	N.R.	N.R.	N.R.	N.R.	N.R.	N.R.	N.R.	N.R.	N.R.	N.R.	N.R.	N.R.	N.R.	N.R.	N.R.	N.R.	N.R.	N.C.	N.C.	N.R.	N.R.
Québec-Chaudière-Appalaches	N.R.	N.R.	N.R.	N.R.	N.R.	N.R.	N.R.	N.R.	N.R.	N.R.	N.R.	N.R.	N.R.	N.R.	N.R.	N.R.	N.R.	N.R.	N.R.	N.C.	N.C.	N.R.	N.R.
Centre-du-Québec	N.R.	N.R.	N.R.	N.R.	N.R.	N.R.	N.R.	N.R.	N.R.	N.R.	N.R.	N.R.	N.R.	N.R.	N.R.	N.R.	N.R.	N.R.	N.R.	N.C.	N.C.	N.R.	N.R.
Montréal-Laval	N.R.	N.R.	N.R.	N.R.	N.R.	N.R.	N.R.	N.R.	N.R.	N.R.	N.R.	N.R.	N.R.	N.R.	N.R.	N.R.	N.R.	N.R.	N.R.	N.C.	N.C.	N.R.	N.R.
Ouest du Québec	N.R.	N.R.	N.R.	N.R.	N.R.	N.R.	N.R.	N.R.	N.R.	N.R.	N.R.	N.R.	N.R.	N.R.	N.R.	N.R.	N.R.	N.R.	N.R.	N.C.	N.C.	N.R.	N.R.
Montérégie	N.R.	N.R.	N.R.	N.R.	N.R.	N.R.	N.R.	N.R.	N.R.	N.R.	N.R.	N.R.	N.R.	N.R.	N.R.	N.R.	N.R.	N.R.	N.R.	N.C.	N.C.	N.R.	N.R.
Province of Québec	N.R.	N.R.	N.R.	N.R.	N.R.	N.R.	N.R.	N.R.	N.R.	N.R.	N.R.	N.R.	N.R.	N.R.	N.R.	N.R.	N.R.	N.R.	N.R.	N.C.	N.C.	N.R.	N.R.
P.H.O.L. - Ottawa	15	0	0	0	0	0	15	0	15	0	0	0	0	0	15	0	15	1	15	1	15	0	
EORLA	161	0	0	0	0	0	161	2	31	0	0	1	1	0	31	0	31	0	31	11	31	1	
P.H.O.L. - Kingston	40	0	0	0	0	0	40	2	40	0	0	0	0	2	40	1	40	0	40	1	40	0	
UHN / Mount Sinai Hospital	396	0	0	0	0	0	396	0	18	0	0	0	0	0	18	0	18	0	18	0	18	0	
P.H.O.L. - Toronto	219	0	5	0	0	0	219	0	219	0	0	0	0	8	219	3	219	2	219	25	219	1	
Sick Kids Hospital - Toronto	N.R.	N.R.	N.R.	N.R.	N.R.	N.R.	N.R.	N.R.	N.R.	N.R.	N.R.	N.R.	N.R.	N.R.	N.R.	N.R.	N.R.	N.R.	N.R.	N.R.	N.R.	N.R.	N.R.
Shared Hospital Laboratory	3002	0	0	3	3	0	3002	6	27	0	0	1	0	0	28	0	28	0	28	1	0	0	
P.H.O.L. - Sault Ste. Marie	6	0	0	0	0	0	6	0	6	0	0	0	0	0	6	0	6	0	6	0	6	0	
P.H.O.L. - Timmins	13	0	0	0	0	0	13	0	13	0	0	0	0	0	13	0	13	0	13	2	13	0	
St. Joseph's - London	55	0	0	0	0	0	55	1	28	0	0	0	0	1	55	0	55	0	55	4	3	0	
P.H.O.L. - London	50	0	0	0	0	0	50	3	50	0	0	0	0	5	50	0	50	0	50	10	50	1	
P.H.O.L. - Orillia	12	0	0	0	0	0	12	0	12	0	0	0	0	0	12	1	12	1	12	0	12	0	
P.H.O.L. - Thunder Bay	9	0	0	0	0	0	9	0	9	0	0	0	0	1	9	0	9	0	9	1	9	0	
P.H.O.L. - Sudbury	5	0	0	0	0	0	5	0	5	0	0	0	0	0	5	0	5	0	5	0	5	0	
P.H.O.L. - Hamilton	51	0	0	0	0	0	51	1	51	0	0	0	0	1	51	1	51	0	51	4	51	0	
P.H.O.L. - Peterborough	11	0	0	0	0	0	11	0	11	0	0	0	0	0	11	1	11	1	11	1	11	0	
St. Joseph's - Hamilton	576	0	0	2	2	0	576	8	576	0	0	16	0	0	576	0	576	6	576	55	0	0	
Province of Ontario	4621	0	5	5	5	0	4621	23	1111	0	0	18	1	18	1139	7	1139	11	1139	116	483	3	
Manitoba	619	0	0	0	0	0	619	4	113	0	1	0	0	0	113	4	143	7	113	38	143	0	
Saskatchewan	387	0	0	0	0	0	0	0	182	0	1	4	3	0	181	4	183	8	181	14	182	0	
Alberta	1516	2	3	3	8	1	1313	11	656	2	1	14	0	0	655	17	656	3	638	104	656	2	
Prairies	2522	2	3	3	8	1	1932	15	951	2	3	18	3	0	949	25	982	18	932	156	981	2	
British Columbia	2006	0	1	0	4	0	1795	9	402	0	2	10	3	0	402	10	402	8	394	61	394	4	
Yukon	3	0	0	0	0	0	3	0	N.C.	N.C.	N.C.	N.C.	N.C.	N.C.	N.C.	N.C.	N.C.	N.C.	N.C.	N.C.	N.C.	N.C.	
Northwest Territories	31	0	0	0	0	0	31	2	0	0	0	0	0	0	0	0	0	0	31	11	0	0	
Nunavut	76	0	0	0	0	0	76	4	N.C.	N.C.	N.C.	N.C.	N.C.	N.C.	N.C.	N.C.	N.C.	N.C.	N.C.	N.C.	N.C.	N.C.	
Territories	110	0	0	0	0	0	110	6	0	0	0	0	0	0	0	0	0	0	31	11	0	0	
CANADA	10191	2	10	8	18	2	9290	65	2758	2	5	47	7	18	2784	60	2817	44	2790	433	2152	11	

The data in the RVDSS report represent surveillance data available at the time of writing. Data missing from the current week are denoted by N.R. Data not collected by reporting lab denoted by N.C.

Specimens from Yukon (YT) are sent to reference laboratories in British Columbia and reported results reflect specimens identified as originating from YT.

Results from British Columbia comprise of specimens from the following sites: BC Children's and Women's Hospital, Children's and Women's Hospital Laboratory, Fraser Health Medical Microbiology Laboratory, Island Health, Providence Health Care, Powell River Hospital, St. Paul's Hospital, Vancouver General Hospital, Victoria General Hospital, BCCDC Public Health Laboratory, Interior Health Authority sites and Northern Health Authority sites.

Delays in the reporting of data may cause data to change retrospectively.

For British Columbia, only data from subtyped influenza A specimens are included in the weekly number of influenza detections. The sum of A(H1N1)pdm09, A(H3), and A(UnS) positive results may not equal the sum of total Flu A positive results.

Due to different testing protocols of laboratories across Canada, influenza A subtype detection counts may not be included in total influenza A detection counts, as some subtype detections are not available through routine testing but are subsequently reported if further subtype testing is conducted. In these instances, subtype counts do not reflect influenza A detections intended to be captured by routine surveillance, and are excluded from total detections and percent positivity.

Table 2: Cumulative respiratory virus detections from August 28, 2022 to September 3, 2022 (surveillance week 2021-35)

Reporting Laboratory	Flu Tested	A(H1)pdm09 Positive	A(H3) Positive	A(UnS) Positive	Total Flu A Positive	Total Flu B Positive	RSV Tested	RSV Positive	HPIV Tested	HPIV 1 Positive	HPIV 2 Positive	HPIV 3 Positive	HPIV 4 Positive	Other HPIV Positive	ADV Tested	ADV Positive	HMPV Tested	HMPV Positive	EV/RV Tested	EV/RV Positive	HCoV Tested	HCoV Positive	
Newfoundland	171	0	1	0	1	0	171	2	171	0	0	0	0	0	171	4	171	6	171	23	171	0	
Prince Edward Island	48	0	0	0	0	0	48	1	48	0	0	0	0	0	48	2	48	0	48	36	48	1	
Nova Scotia	368	0	0	0	0	0	368	2	22	0	0	0	0	0	22	3	22	0	22	11	22	0	
New Brunswick	345	0	0	0	0	1	245	7	53	0	0	1	0	0	53	9	53	1	53	19	53	1	
Atlantic	932	0	1	0	1	1	832	12	294	0	0	1	0	0	294	18	294	7	294	89	294	2	
Région Nord-Est	0	0	0	0	0	0	0	0	0	0	0	0	0	0	0	0	0	0	0	N.C.	N.C.	0	0
Québec-Chaudière-Appalaches	0	0	0	0	0	0	0	0	0	0	0	0	0	0	0	0	0	0	0	N.C.	N.C.	0	0
Centre-du-Québec	0	0	0	0	0	0	0	0	0	0	0	0	0	0	0	0	0	0	0	N.C.	N.C.	0	0
Montréal-Laval	0	0	0	0	0	0	0	0	0	0	0	0	0	0	0	0	0	0	0	N.C.	N.C.	0	0
Ouest du Québec	0	0	0	0	0	0	0	0	0	0	0	0	0	0	0	0	0	0	0	N.C.	N.C.	0	0
Montérégie	0	0	0	0	0	0	0	0	0	0	0	0	0	0	0	0	0	0	0	N.C.	N.C.	0	0
Province of Québec	0	0	0	0	0	0	0	0	0	0	0	0	0	0	0	0	0	0	0	N.C.	N.C.	0	0
P.H.O.L. - Ottawa	15	0	0	0	0	0	15	0	15	0	0	0	0	0	15	0	15	1	15	1	15	0	
EORLA	161	0	0	0	0	0	161	2	31	0	0	1	1	0	31	0	31	0	31	11	31	1	
P.H.O.L. - Kingston	40	0	0	0	0	0	40	2	40	0	0	0	0	2	40	1	40	0	40	1	40	0	
UHN / Mount Sinai Hospital	396	0	0	0	0	0	396	0	18	0	0	0	0	0	18	0	18	0	18	0	18	0	
P.H.O.L. - Toronto	219	0	5	0	0	0	219	0	219	0	0	0	0	8	219	3	219	2	219	25	219	1	
Sick Kids Hospital - Toronto	0	0	0	0	0	0	0	0	0	0	0	0	0	0	0	0	0	0	0	0	0	0	
Shared Hospital Laboratory	3002	0	0	3	3	0	3002	6	27	0	0	1	0	0	28	0	28	0	28	1	0	0	
P.H.O.L. - Sault Ste. Marie	6	0	0	0	0	0	6	0	6	0	0	0	0	0	6	0	6	0	6	0	6	0	
P.H.O.L. - Timmins	13	0	0	0	0	0	13	0	13	0	0	0	0	0	13	0	13	0	13	2	13	0	
St. Joseph's - London	55	0	0	0	0	0	55	1	28	0	0	0	0	1	55	0	55	0	55	4	3	0	
P.H.O.L. - London	50	0	0	0	0	0	50	3	50	0	0	0	0	5	50	0	50	0	50	10	50	1	
P.H.O.L. - Orillia	12	0	0	0	0	0	12	0	12	0	0	0	0	0	12	1	12	1	12	0	12	0	
P.H.O.L. - Thunder Bay	9	0	0	0	0	0	9	0	9	0	0	0	0	1	9	0	9	0	9	1	9	0	
P.H.O.L. - Sudbury	5	0	0	0	0	0	5	0	5	0	0	0	0	0	5	0	5	0	5	0	5	0	
P.H.O.L. - Hamilton	51	0	0	0	0	0	51	1	51	0	0	0	0	1	51	1	51	0	51	4	51	0	
P.H.O.L. - Peterborough	11	0	0	0	0	0	11	0	11	0	0	0	0	0	11	1	11	1	11	1	11	0	
St. Joseph's - Hamilton	576	0	0	2	2	0	576	8	576	0	0	16	0	0	576	0	576	6	576	55	0	0	
Province of Ontario	4621	0	5	5	5	0	4621	23	1111	0	0	18	1	18	1139	7	1139	11	1139	116	483	3	
Manitoba	619	0	0	0	0	0	619	4	113	0	1	0	0	0	113	4	143	7	113	38	143	0	
Saskatchewan	387	0	0	0	0	0	0	0	182	0	1	4	3	0	181	4	183	8	181	14	182	0	
Alberta	1516	2	3	3	8	1	1313	11	656	2	1	14	0	0	655	17	656	3	638	104	656	2	
Prairies	2522	2	3	3	8	1	1932	15	951	2	3	18	3	0	949	25	982	18	932	156	981	2	
British Columbia	2006	0	1	0	4	0	1795	9	402	0	2	10	3	0	402	10	402	8	394	61	394	4	
Yukon	3	0	0	0	0	0	3	0	N.C.	N.C.	N.C.	N.C.	N.C.	N.C.	N.C.	N.C.	N.C.	N.C.	N.C.	N.C.	N.C.	N.C.	N.C.
Northwest Territories	31	0	0	0	0	0	31	2	0	0	0	0	0	0	0	0	0	0	31	11	0	0	
Nunavut	76	0	0	0	0	0	76	4	N.C.	N.C.	N.C.	N.C.	N.C.	N.C.	N.C.	N.C.	N.C.	N.C.	N.C.	N.C.	N.C.	N.C.	
Territories	110	0	0	0	0	0	110	6	0	0	0	0	0	0	0	0	0	0	31	11	0	0	
CANADA	10191	2	10	8	18	2	9290	65	2758	2	5	47	7	18	2784	60	2817	44	2790	433	2152	11	

The data in the RVDSS report represent surveillance data available at the time of writing. Data not collected by reporting lab denoted by N.C.

Specimens from Yukon (YT) are sent to reference laboratories in British Columbia and reported results reflect specimens identified as originating from YT.

Results from British Columbia comprise of specimens from the following sites: BC Children's and Women's Hospital, Children's and Women's Hospital Laboratory, Fraser Health Medical Microbiology Laboratory, Island Health, Providence Health Care, Powell River Hospital, St. Paul's Hospital, Vancouver General Hospital, Victoria General Hospital, BCCDC Public Health Laboratory, Interior Health Authority sites and Northern Health Authority sites.

Delays in the reporting of data may cause data to change retrospectively. Due to these delays, the sum of weekly report totals do not add up to cumulative totals.

For British Columbia, only data from subtyped influenza A specimens are included in the weekly number of influenza detections. The sum of A(H1N1)pdm09, A(H3), and A(UnS) positive results may not equal the sum of total Flu A positive results.

Due to different testing protocols of laboratories across Canada, influenza A subtype detection counts may not be included in total influenza A detection counts, as some subtype detections are not available through routine testing but are subsequently reported if further subtype testing is conducted. In these instances, subtype counts do not reflect influenza A detections intended to be captured by routine surveillance, and are excluded from total detections and percent positivity.

Figure 2: Number of positive respiratory virus tests reported by participating laboratories in Canada by surveillance week

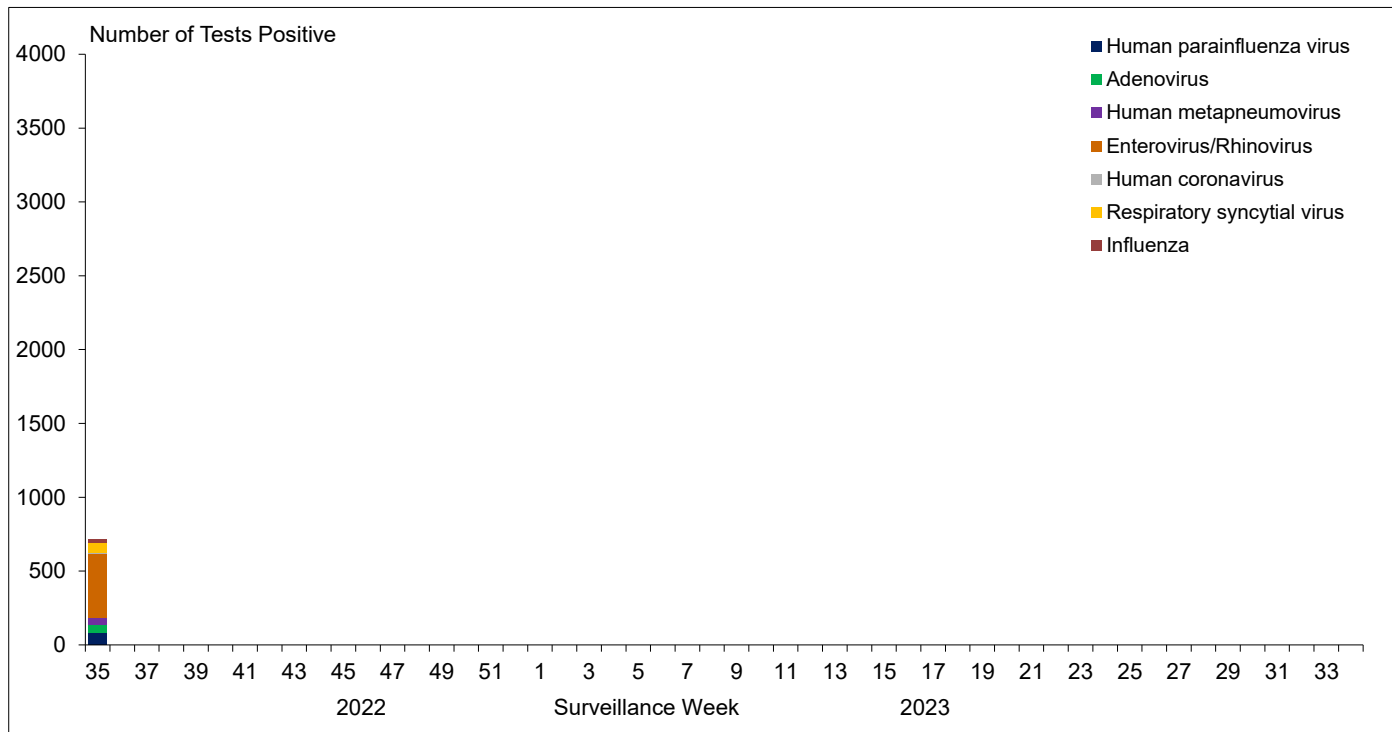


Figure 3: Positive Influenza (Flu) tests (%) in Canada by region by surveillance week

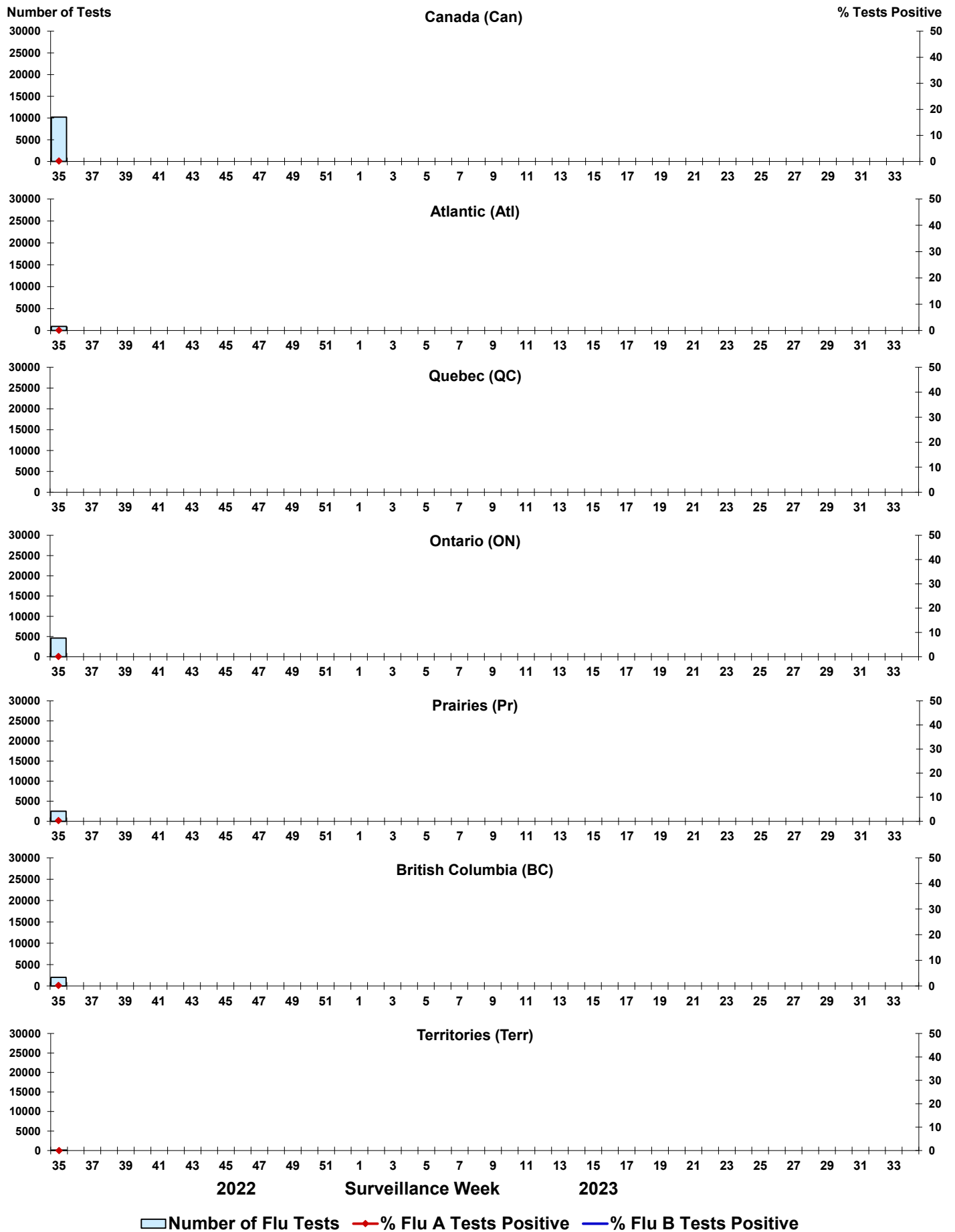


Figure 4: Positive Respiratory syncytial virus (RSV) tests (%) in Canada by region by surveillance week

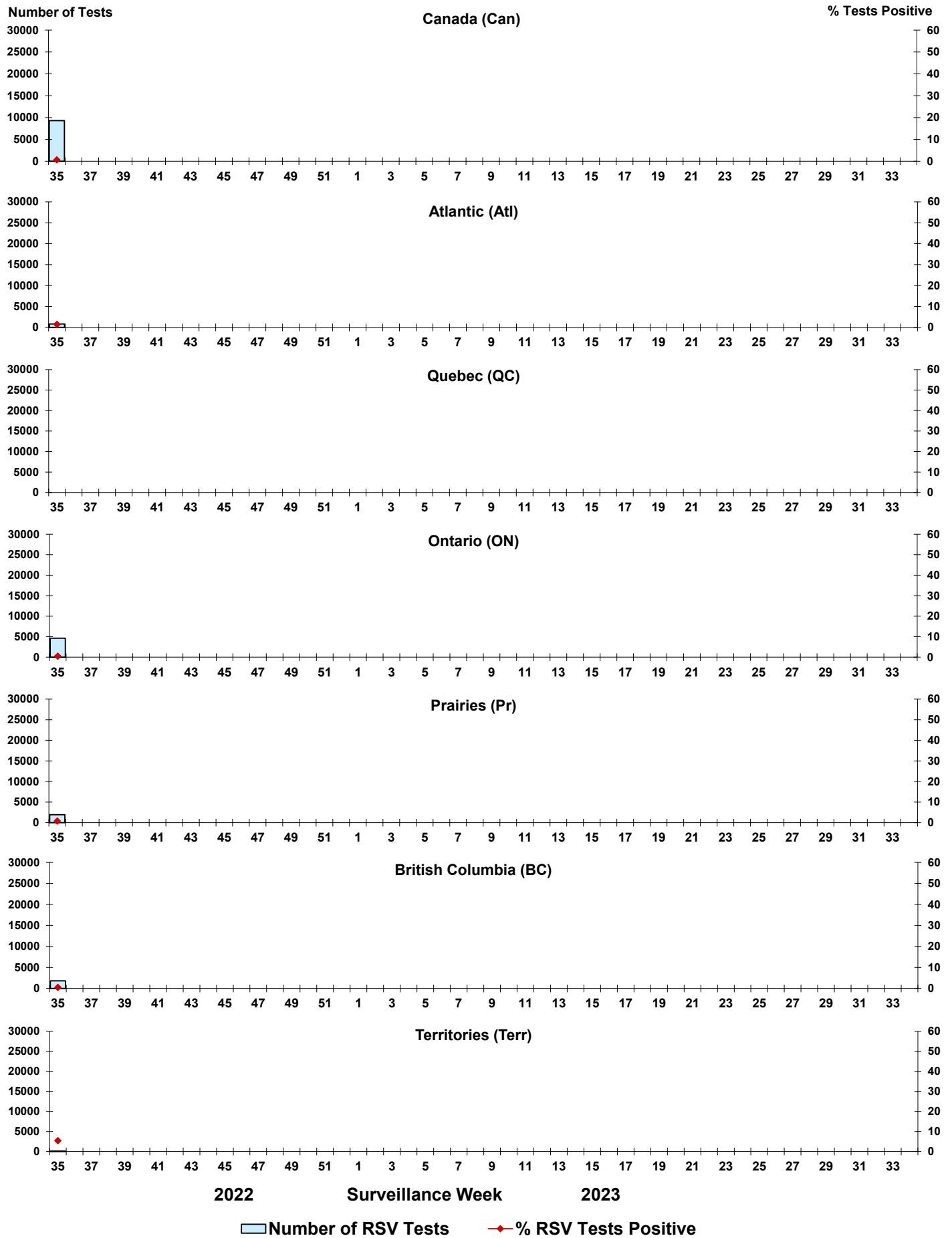


Figure 5: Positive Human parainfluenza virus (HPIV) tests (%) in Canada by region by surveillance week

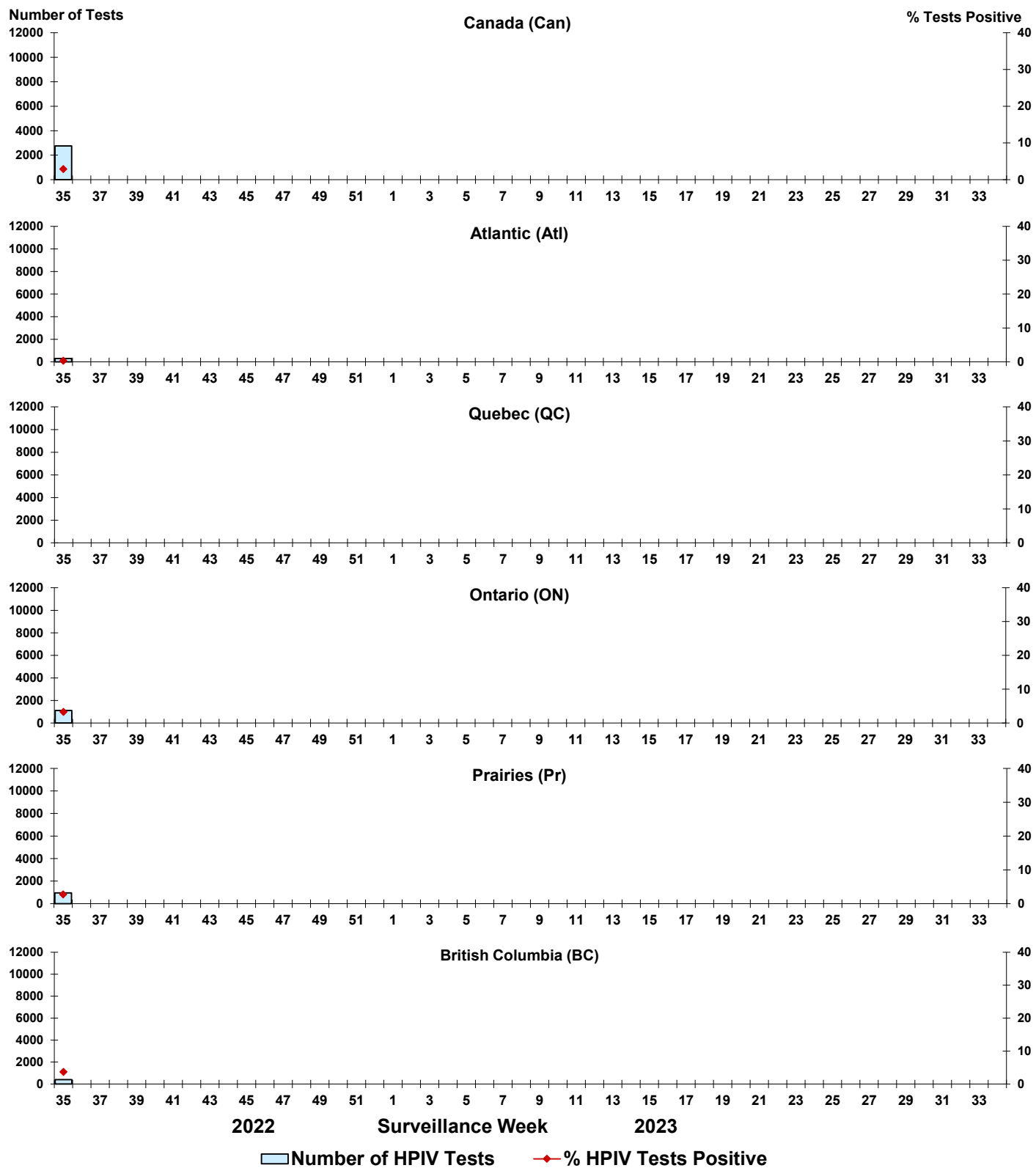


Figure 6: Positive Adenovirus (ADV) tests (%) in Canada by region by surveillance week

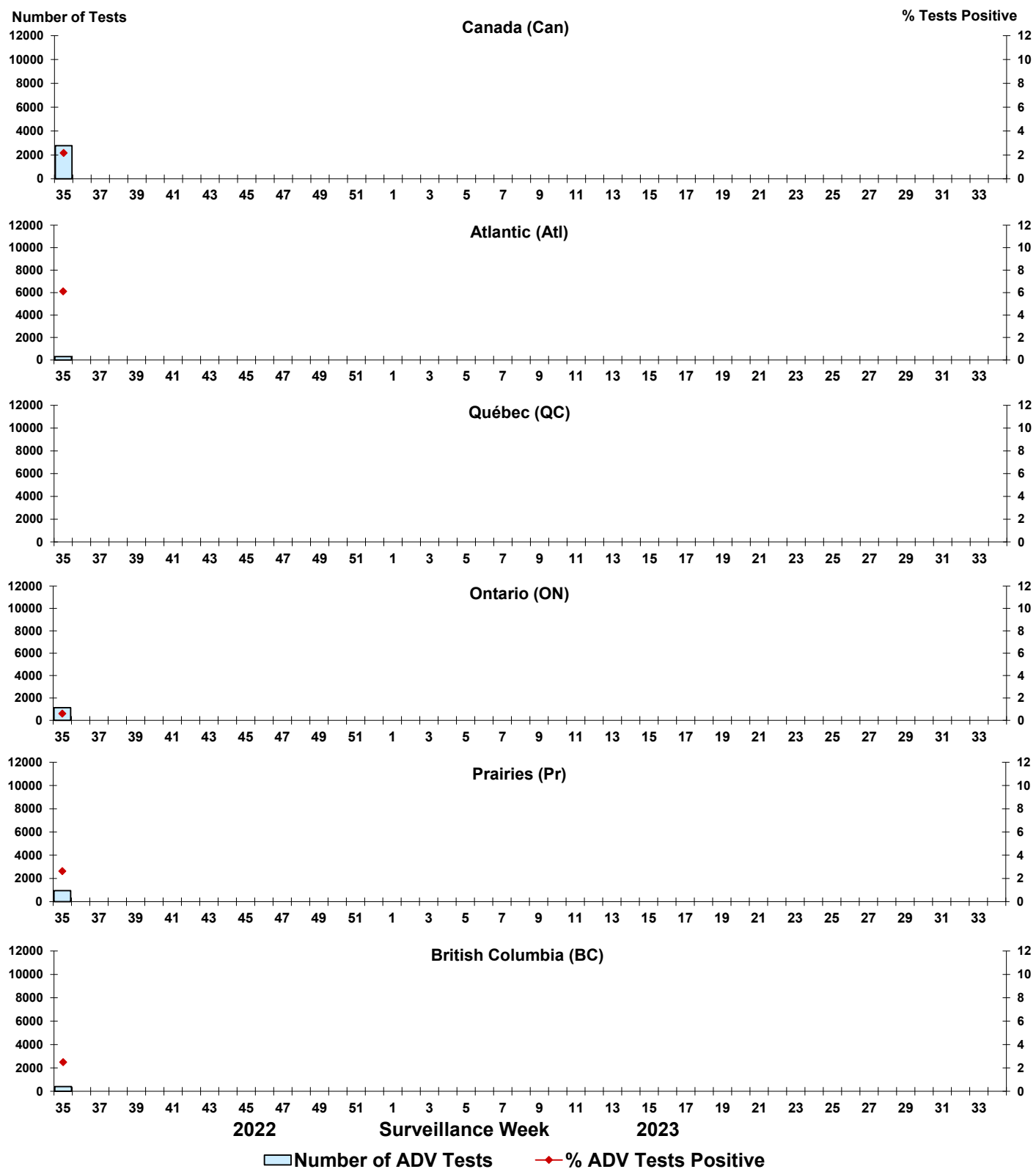


Figure 7: Positive Human metapneumovirus (HMPV) tests (%) in Canada by region by surveillance week

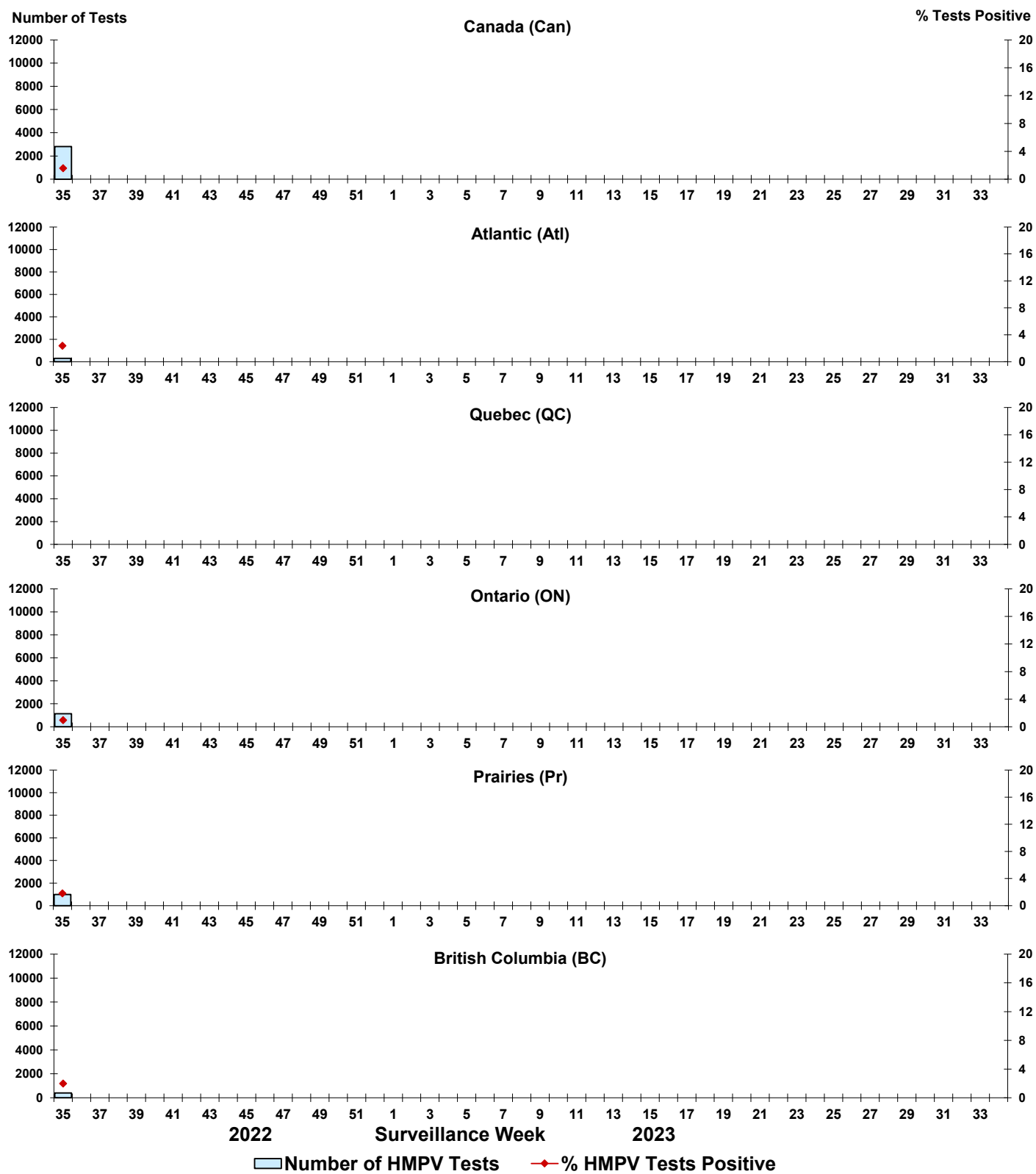


Figure 8: Positive Enterovirus/Rhinovirus (EV/RV) tests (%) in Canada by region by surveillance week

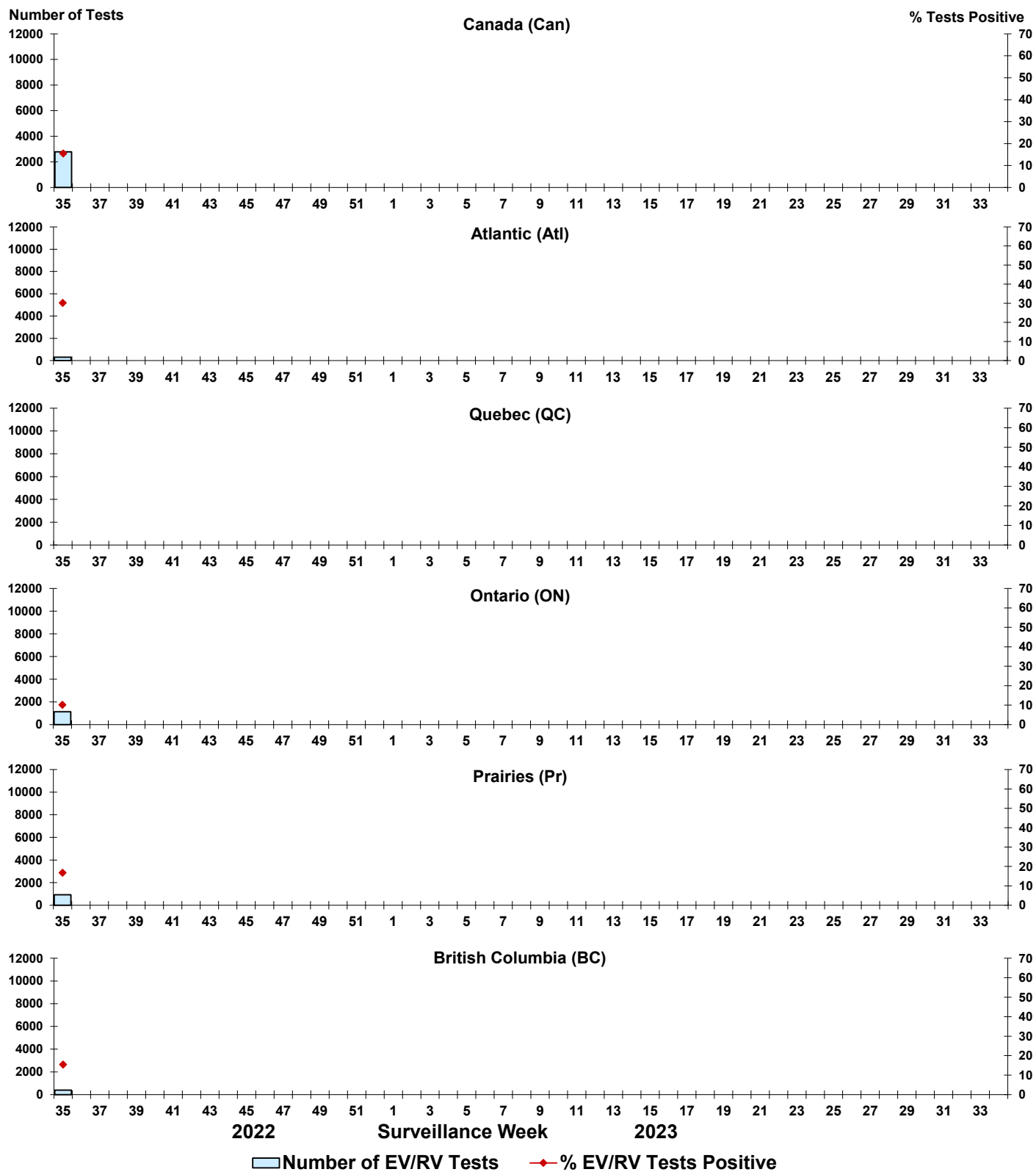


Figure 9: Positive Human coronavirus (HCoV) tests (%) in Canada by region by surveillance week

