

# RESPIRATORY VIRUS DETECTION REPORT

September 4 to September 10, 2022  
(Surveillance Week 2022-36)



In this Respiratory Virus Report, the number of detections of coronavirus reflects only seasonal human coronaviruses, not the novel pandemic coronavirus (SARS-CoV-2) that causes COVID-19. For information on COVID-19, see the [Coronavirus disease \(COVID-19\): Outbreak update](#).

## Overall Summary

Respiratory virus detections are low in Canada, and activity of all viruses is near or below expected levels.

- Enterovirus/Rhinovirus remains the most common seasonal respiratory virus detected in Canada (429 detections; 16.2% positive), but activity remains below expected levels for this time of year.
- Detections of other respiratory viruses are low, but activity is near expected levels.
- 33/34 sentinel laboratories reported surveillance data.

### Abbreviations

Flu: Influenza

Flu A(H1N1)pdm09: Influenza A(H1N1)pdm09

Flu A(H3): Influenza A(H3N2)

Flu A (UnS): Influenza A(Unsubtyped)

RSV: Respiratory syncytial virus

HPIV: Human parainfluenza virus

HMPV: Human metapneumovirus

ADV: Adenovirus

EV/RV: Enterovirus/Rhinovirus

HCoV: Human coronavirus

Atl: Atlantic Canada

BC: British Columbia

Can: Canada

EORLA: Eastern Ontario Regional Laboratory Association

HSC: Health Sciences Centre

N.C.: Data not collected

N.R.: Data not reported for current week

ON: Ontario

PR: Prairies

P.H.O.L.: Public Health Ontario Laboratory

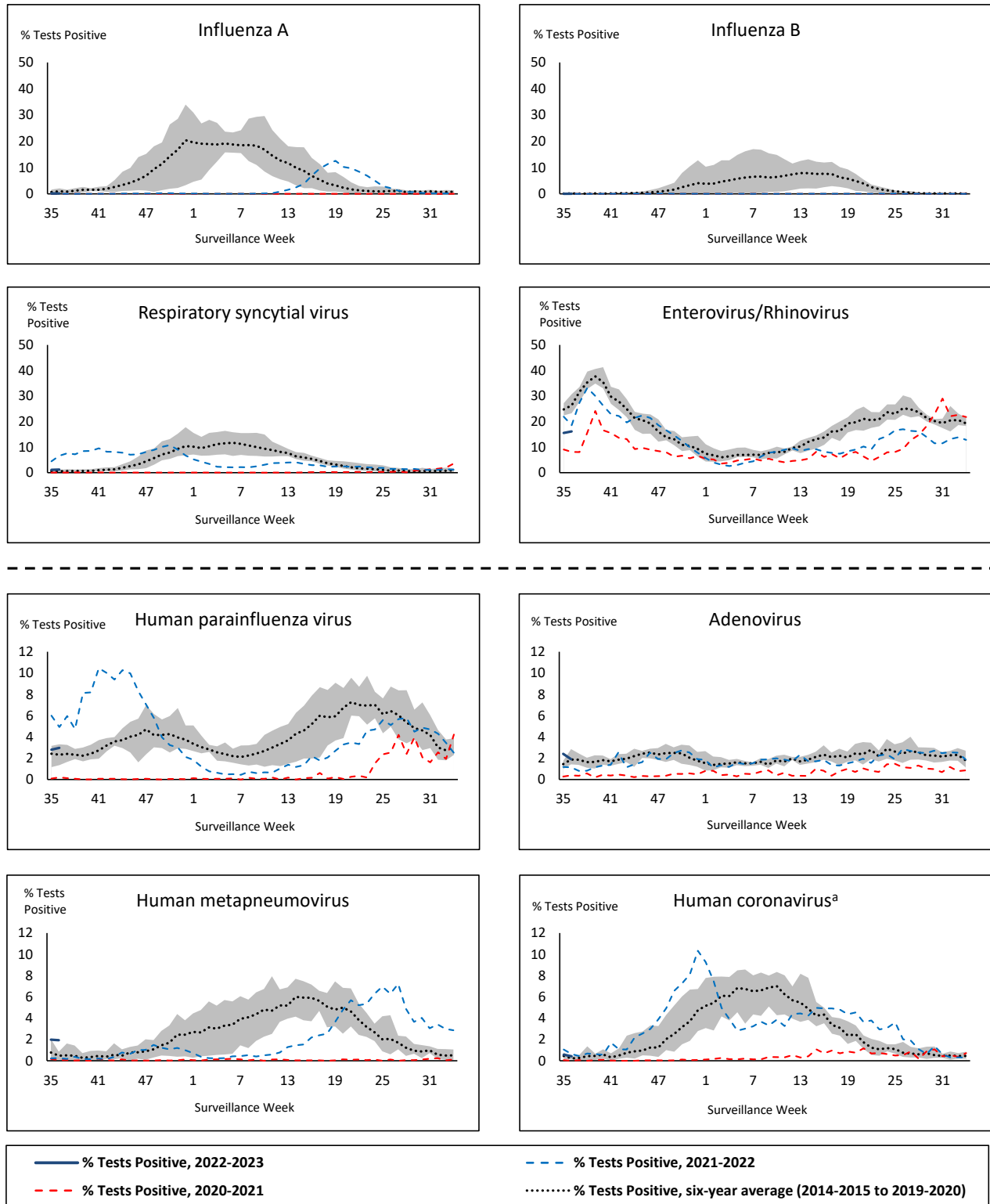
QC: Quebec

Terr: Territories of Canada

UHN: University Health Network



**Figure 1: Positive respiratory virus tests (%) reported by participating laboratories in Canada by surveillance week compared to average and range from 2014-2015 to 2019-2020 season**



Shaded area represents the maximum and minimum % of respiratory virus tests positive reported by week from seasons 2014-2015 to 2019-2020

Note: Data from week 11 of the 2019-2020 season onwards are excluded from the historical comparison due to the COVID-19 pandemic

Note: % Tests Positive scale changes across the dashed line

<sup>a</sup> Human coronavirus excludes human coronaviruses SARS-CoV, MERS-CoV and SARS-CoV-2; Includes seasonal human coronaviruses HCoV-229E, HCoV-OC43, HCoV-NL63, HCoV-HKU1.

**Table 1: Respiratory virus detections for the week ending September 10, 2022 (surveillance week 2022-36)**

Reporting Laboratory	Flu Tested	A(H1)pdm09 Positive	A(H3) Positive	A(UnS) Positive	Total Flu A Positive	Total Flu B Positive	RSV Tested	RSV Positive	HPIV Tested	HPIV 1 Positive	HPIV 2 Positive	HPIV 3 Positive	HPIV 4 Positive	Other HPIV Positive	ADV Tested	ADV Positive	HMPV Tested	HMPV Positive	EV/RV Tested	EV/RV Positive	HCoV Tested	HCoV Positive	
Newfoundland	142	0	0	0	0	0	142	3	142	1	2	2	2	0	142	2	142	5	142	13	142	0	
Prince Edward Island	30	0	0	0	0	0	30	0	30	0	0	2	0	0	30	3	30	0	30	17	30	0	
Nova Scotia	320	0	0	0	0	0	320	2	33	0	0	1	1	0	33	1	33	0	33	8	33	0	
New Brunswick	414	0	0	0	0	0	293	0	75	0	0	4	0	0	75	4	75	0	75	23	75	2	
<b>Atlantic</b>	<b>906</b>	<b>0</b>	<b>0</b>	<b>0</b>	<b>0</b>	<b>0</b>	<b>785</b>	<b>5</b>	<b>280</b>	<b>1</b>	<b>2</b>	<b>9</b>	<b>3</b>	<b>0</b>	<b>280</b>	<b>10</b>	<b>280</b>	<b>5</b>	<b>280</b>	<b>61</b>	<b>280</b>	<b>2</b>	
Région Nord-Est	607	0	0	0	0	0	135	3	7	1	1	0	0	0	7	1	7	0	N.C.	N.C.	7	0	
Québec-Chaudière-Appalaches	343	0	0	1	1	0	343	5	27	0	0	1	0	0	267	3	227	4	N.C.	N.C.	125	1	
Centre-du-Québec	270	0	0	0	0	1	235	5	30	0	0	0	0	0	30	0	30	1	N.C.	N.C.	30	0	
Montréal-Laval	707	0	0	1	1	0	687	30	357	4	0	5	0	0	357	9	357	18	N.C.	N.C.	384	0	
Ouest du Québec	266	0	0	1	1	0	266	11	25	0	0	1	0	0	25	2	25	1	N.C.	N.C.	25	0	
Montérégie	365	0	0	0	0	0	365	6	0	0	0	0	0	0	0	0	0	0	N.C.	N.C.	0	0	
<b>Province of Québec</b>	<b>2558</b>	<b>0</b>	<b>0</b>	<b>3</b>	<b>3</b>	<b>1</b>	<b>2031</b>	<b>60</b>	<b>446</b>	<b>5</b>	<b>1</b>	<b>7</b>	<b>0</b>	<b>0</b>	<b>686</b>	<b>15</b>	<b>646</b>	<b>24</b>	<b>N.C.</b>	<b>N.C.</b>	<b>571</b>	<b>1</b>	
P.H.O.L. - Ottawa	21	0	0	0	0	0	21	0	21	0	0	0	0	0	21	0	21	1	21	0	21	0	
EORLA	219	0	0	1	1	0	219	6	33	1	0	0	0	0	33	0	33	0	33	8	33	0	
P.H.O.L. - Kingston	18	0	0	0	0	0	18	0	18	0	0	0	0	0	18	0	18	0	18	6	18	0	
UHN / Mount Sinai Hospital	362	0	0	0	0	0	362	1	9	0	0	0	0	0	9	0	0	0	9	1	9	0	
P.H.O.L. - Toronto	231	1	4	0	4	0	231	5	231	0	0	0	0	12	231	5	231	2	231	17	231	1	
Sick Kids Hospital - Toronto	N.R.	N.R.	N.R.	N.R.	N.R.	N.R.	N.R.	N.R.	N.R.	N.R.	N.R.	N.R.	N.R.	N.R.	N.R.	N.R.	N.R.	N.R.	N.R.	N.R.	N.R.	N.R.	N.R.
Shared Hospital Laboratory	2809	0	0	2	2	0	2809	16	25	1	0	2	0	0	26	1	26	0	26	1	0	0	
P.H.O.L. - Sault Ste. Marie	5	0	0	0	0	0	5	0	5	0	0	0	0	0	5	0	5	0	5	0	5	0	
P.H.O.L. - Timmins	1	0	0	0	0	0	1	0	1	0	0	0	0	0	1	0	1	0	1	0	1	0	
St. Joseph's - London	33	0	0	0	0	0	33	0	26	0	0	0	0	0	33	0	33	0	33	5	3	0	
P.H.O.L. - London	45	0	0	0	0	0	45	0	45	0	0	0	0	0	45	1	45	0	45	6	45	0	
P.H.O.L. - Orillia	16	0	0	0	0	0	16	1	16	0	0	0	0	0	16	0	16	3	16	3	16	0	
P.H.O.L. - Thunder Bay	3	0	0	0	0	0	3	0	3	0	0	0	0	0	3	0	3	0	3	2	3	0	
P.H.O.L. - Sudbury	4	0	0	0	0	0	4	0	4	0	0	0	0	0	4	0	4	0	4	2	4	0	
P.H.O.L. - Hamilton	55	0	0	0	0	0	55	1	55	0	0	0	0	2	55	0	55	0	55	11	55	0	
P.H.O.L. - Peterborough	7	0	0	0	0	0	7	2	7	0	0	0	0	0	7	0	7	0	7	1	7	0	
St. Joseph's - Hamilton	538	0	0	0	1	0	538	12	538	0	0	14	0	0	538	0	538	4	538	50	0	0	
<b>Province of Ontario</b>	<b>4367</b>	<b>1</b>	<b>4</b>	<b>3</b>	<b>7</b>	<b>1</b>	<b>4367</b>	<b>44</b>	<b>1037</b>	<b>2</b>	<b>0</b>	<b>16</b>	<b>0</b>	<b>14</b>	<b>1045</b>	<b>7</b>	<b>1036</b>	<b>10</b>	<b>1045</b>	<b>113</b>	<b>451</b>	<b>1</b>	
Manitoba	477	0	0	0	0	0	477	2	132	0	0	3	0	0	132	7	153	6	132	44	153	0	
Saskatchewan	387	0	0	2	2	0	386	3	172	0	1	5	2	0	175	6	175	9	175	6	172	2	
Alberta	1622	0	1	1	2	2	1476	8	702	2	2	9	1	0	702	12	702	3	688	135	702	5	
<b>Prairies</b>	<b>2486</b>	<b>0</b>	<b>1</b>	<b>3</b>	<b>4</b>	<b>2</b>	<b>2339</b>	<b>13</b>	<b>1006</b>	<b>2</b>	<b>3</b>	<b>17</b>	<b>3</b>	<b>0</b>	<b>1009</b>	<b>25</b>	<b>1030</b>	<b>18</b>	<b>995</b>	<b>185</b>	<b>1027</b>	<b>7</b>	
<b>British Columbia</b>	<b>1693</b>	<b>0</b>	<b>0</b>	<b>0</b>	<b>4</b>	<b>1</b>	<b>1553</b>	<b>9</b>	<b>324</b>	<b>0</b>	<b>1</b>	<b>5</b>	<b>0</b>	<b>1</b>	<b>324</b>	<b>7</b>	<b>324</b>	<b>7</b>	<b>319</b>	<b>61</b>	<b>319</b>	<b>0</b>	
Yukon	10	0	0	0	0	0	10	0	N.C.	N.C.	N.C.	N.C.	N.C.	N.C.	N.C.	N.C.	N.C.	N.C.	N.C.	N.C.	N.C.	N.C.	
Northwest Territories	18	0	0	0	0	0	18	1	0	0	0	0	0	0	0	0	0	0	18	9	0	0	
Nunavut	58	0	0	0	0	0	58	4	N.C.	N.C.	N.C.	N.C.	N.C.	N.C.	N.C.	N.C.	N.C.	N.C.	N.C.	N.C.	N.C.	N.C.	
<b>Territories</b>	<b>86</b>	<b>0</b>	<b>0</b>	<b>0</b>	<b>0</b>	<b>0</b>	<b>86</b>	<b>5</b>	<b>0</b>	<b>0</b>	<b>0</b>	<b>0</b>	<b>0</b>	<b>0</b>	<b>0</b>	<b>0</b>	<b>0</b>	<b>0</b>	<b>18</b>	<b>9</b>	<b>0</b>	<b>0</b>	
<b>CANADA</b>	<b>12096</b>	<b>1</b>	<b>5</b>	<b>9</b>	<b>18</b>	<b>5</b>	<b>11161</b>	<b>136</b>	<b>3093</b>	<b>10</b>	<b>7</b>	<b>54</b>	<b>6</b>	<b>15</b>	<b>3344</b>	<b>64</b>	<b>3316</b>	<b>64</b>	<b>2657</b>	<b>429</b>	<b>2648</b>	<b>11</b>	

The data in the RVDSS report represent surveillance data available at the time of writing. Data missing from the current week are denoted by N.R. Data not collected by reporting lab denoted by N.C.

Specimens from Yukon (YT) are sent to reference laboratories in British Columbia and reported results reflect specimens identified as originating from YT.

Results from British Columbia comprise of specimens from the following sites: BC Children's and Women's Hospital, Children's and Women's Hospital Laboratory, Fraser Health Medical Microbiology Laboratory, Island Health, Providence Health Care, Powell River Hospital, St. Paul's Hospital, Vancouver General Hospital, Victoria General Hospital, BCCDC Public Health Laboratory, Interior Health Authority sites and Northern Health Authority sites.

Delays in the reporting of data may cause data to change retrospectively.

For British Columbia, only data from subtyped influenza A specimens are included in the weekly number of influenza detections. The sum of A(H1N1)pdm09, A(H3), and A(UnS) positive results may not equal the sum of total Flu A positive results.

Due to different testing protocols of laboratories across Canada, influenza A subtype detection counts may not be included in total influenza A detection counts, as some subtype detections are not available through routine testing but are subsequently reported if further subtype testing is conducted. In these instances, subtype counts do not reflect influenza A detections intended to be captured by routine surveillance, and are excluded from total detections and percent positivity.

**Table 2: Cumulative respiratory virus detections from August 28, 2022 to September 10, 2022 (surveillance weeks 2022-35 to 2022-36)**

Reporting Laboratory	Flu Tested	A(H1)pdm09 Positive	A(H3) Positive	A(UnS) Positive	Total Flu A Positive	Total Flu B Positive	RSV Tested	RSV Positive	HPIV Tested	HPIV 1 Positive	HPIV 2 Positive	HPIV 3 Positive	HPIV 4 Positive	Other HPIV Positive	ADV Tested	ADV Positive	HMPV Tested	HMPV Positive	EV/RV Tested	EV/RV Positive	HCoV Tested	HCoV Positive
Newfoundland	313	0	1	0	1	0	313	5	313	1	2	2	2	0	313	6	313	11	313	36	313	0
Prince Edward Island	78	0	0	0	0	0	78	1	78	0	0	2	0	0	78	5	78	0	78	53	78	1
Nova Scotia	688	0	0	0	0	0	688	4	55	0	0	1	1	0	55	4	55	0	55	19	55	0
New Brunswick	759	0	0	0	0	1	538	7	128	0	0	5	0	0	128	13	128	1	128	42	128	3
<b>Atlantic</b>	<b>1838</b>	<b>0</b>	<b>1</b>	<b>0</b>	<b>1</b>	<b>1</b>	<b>1617</b>	<b>17</b>	<b>574</b>	<b>1</b>	<b>2</b>	<b>10</b>	<b>3</b>	<b>0</b>	<b>574</b>	<b>28</b>	<b>574</b>	<b>12</b>	<b>574</b>	<b>150</b>	<b>574</b>	<b>4</b>
Région Nord-Est	1125	0	0	2	2	0	281	6	11	1	1	0	0	0	10	1	10	0	N.C.	N.C.	10	1
Québec-Chaudière-Appalaches	680	0	0	2	2	0	602	9	57	0	0	2	0	0	481	6	439	9	N.C.	N.C.	229	3
Centre-du-Québec	466	0	0	1	1	1	404	7	38	0	0	0	0	0	38	0	38	1	N.C.	N.C.	38	0
Montréal-Laval	1410	0	0	1	1	1	1280	69	683	6	1	10	0	0	683	25	683	35	N.C.	N.C.	734	1
Ouest du Québec	501	0	0	2	2	0	501	20	25	0	0	1	0	0	34	3	25	1	N.C.	N.C.	25	0
Montérégie	833	0	0	0	0	0	833	10	0	0	0	0	0	0	0	0	0	0	N.C.	N.C.	0	0
<b>Province of Québec</b>	<b>5015</b>	<b>0</b>	<b>0</b>	<b>8</b>	<b>8</b>	<b>2</b>	<b>3901</b>	<b>121</b>	<b>814</b>	<b>7</b>	<b>2</b>	<b>13</b>	<b>0</b>	<b>0</b>	<b>1246</b>	<b>35</b>	<b>1195</b>	<b>46</b>	<b>N.C.</b>	<b>N.C.</b>	<b>1036</b>	<b>5</b>
P.H.O.L. - Ottawa	36	0	0	0	0	0	36	0	36	0	0	0	0	0	36	0	36	2	36	1	36	0
EORLA	380	0	0	1	1	0	380	8	64	1	0	1	1	0	64	0	64	0	64	19	64	1
P.H.O.L. - Kingston	58	0	0	0	0	0	58	2	58	0	0	0	0	2	58	1	58	0	58	7	58	0
UHN / Mount Sinai Hospital	758	0	0	0	0	0	758	1	27	0	0	0	0	0	27	0	18	0	27	1	27	0
P.H.O.L. - Toronto	450	1	9	0	4	0	450	5	450	0	0	0	0	20	450	8	450	4	450	42	450	2
Sick Kids Hospital - Toronto	0	0	0	0	0	0	0	0	0	0	0	0	0	0	0	0	0	0	0	0	0	0
Shared Hospital Laboratory	5811	0	0	5	5	0	5811	22	52	1	0	3	0	0	54	1	54	0	54	2	0	0
P.H.O.L. - Sault Ste. Marie	11	0	0	0	0	0	11	0	11	0	0	0	0	0	11	0	11	0	11	0	11	0
P.H.O.L. - Timmins	14	0	0	0	0	0	14	0	14	0	0	0	0	0	14	0	14	0	14	2	14	0
St. Joseph's - London	88	0	0	0	0	0	88	1	54	0	0	0	0	1	88	0	88	0	88	9	6	0
P.H.O.L. - London	95	0	0	0	0	0	95	3	95	0	0	0	0	5	95	1	95	0	95	16	95	1
P.H.O.L. - Orillia	28	0	0	0	0	0	28	1	28	0	0	0	0	0	28	1	28	4	28	3	28	0
P.H.O.L. - Thunder Bay	12	0	0	0	0	0	12	0	12	0	0	0	0	1	12	0	12	0	12	3	12	0
P.H.O.L. - Sudbury	9	0	0	0	0	0	9	0	9	0	0	0	0	0	9	0	9	0	9	2	9	0
P.H.O.L. - Hamilton	106	0	0	0	0	0	106	2	106	0	0	0	0	3	106	1	106	0	106	15	106	0
P.H.O.L. - Peterborough	18	0	0	0	0	0	18	2	18	0	0	0	0	0	18	1	18	1	18	2	18	0
St. Joseph's - Hamilton	1114	0	0	2	2	1	1114	20	1114	0	0	30	0	0	1114	0	1114	10	1114	105	0	0
<b>Province of Ontario</b>	<b>8988</b>	<b>1</b>	<b>9</b>	<b>8</b>	<b>12</b>	<b>1</b>	<b>8988</b>	<b>67</b>	<b>2148</b>	<b>2</b>	<b>0</b>	<b>34</b>	<b>1</b>	<b>32</b>	<b>2184</b>	<b>14</b>	<b>2175</b>	<b>21</b>	<b>2184</b>	<b>229</b>	<b>934</b>	<b>4</b>
Manitoba	1096	0	0	0	0	0	1096	6	245	0	1	3	0	0	245	11	296	13	245	82	296	0
Saskatchewan	805	0	0	2	2	0	804	4	354	0	2	9	5	0	356	10	358	17	356	20	354	2
Alberta	3157	2	4	4	10	3	2805	19	1373	4	3	23	1	0	1372	30	1373	7	1340	242	1373	7
<b>Prairies</b>	<b>5058</b>	<b>2</b>	<b>4</b>	<b>6</b>	<b>12</b>	<b>3</b>	<b>4705</b>	<b>29</b>	<b>1972</b>	<b>4</b>	<b>6</b>	<b>35</b>	<b>6</b>	<b>0</b>	<b>1973</b>	<b>51</b>	<b>2027</b>	<b>37</b>	<b>1941</b>	<b>344</b>	<b>2023</b>	<b>9</b>
<b>British Columbia</b>	<b>3699</b>	<b>0</b>	<b>1</b>	<b>0</b>	<b>8</b>	<b>1</b>	<b>3348</b>	<b>18</b>	<b>726</b>	<b>0</b>	<b>3</b>	<b>15</b>	<b>3</b>	<b>1</b>	<b>726</b>	<b>17</b>	<b>726</b>	<b>15</b>	<b>713</b>	<b>122</b>	<b>713</b>	<b>4</b>
Yukon	18	0	0	0	0	0	18	0	N.C.	N.C.	N.C.	N.C.	N.C.	N.C.	N.C.	N.C.	N.C.	N.C.	N.C.	N.C.	N.C.	N.C.
Northwest Territories	49	0	0	0	0	0	49	3	0	0	0	0	0	0	0	0	0	0	49	20	0	0
Nunavut	134	0	0	0	0	0	134	11	N.C.	N.C.	N.C.	N.C.	N.C.	N.C.	N.C.	N.C.	N.C.	N.C.	N.C.	N.C.	N.C.	N.C.
<b>Territories</b>	<b>201</b>	<b>0</b>	<b>0</b>	<b>0</b>	<b>0</b>	<b>0</b>	<b>201</b>	<b>14</b>	<b>0</b>	<b>0</b>	<b>0</b>	<b>0</b>	<b>0</b>	<b>0</b>	<b>0</b>	<b>0</b>	<b>0</b>	<b>0</b>	<b>49</b>	<b>20</b>	<b>0</b>	<b>0</b>
<b>CANADA</b>	<b>24799</b>	<b>3</b>	<b>15</b>	<b>22</b>	<b>41</b>	<b>8</b>	<b>22760</b>	<b>266</b>	<b>6234</b>	<b>14</b>	<b>13</b>	<b>107</b>	<b>13</b>	<b>33</b>	<b>6703</b>	<b>145</b>	<b>6697</b>	<b>131</b>	<b>5461</b>	<b>865</b>	<b>5280</b>	<b>26</b>

The data in the RVDSS report represent surveillance data available at the time of writing. Data not collected by reporting lab denoted by N.C.

Specimens from Yukon (YT) are sent to reference laboratories in British Columbia and reported results reflect specimens identified as originating from YT.

Results from British Columbia comprise of specimens from the following sites: BC Children's and Women's Hospital, Children's and Women's Hospital Laboratory, Fraser Health Medical Microbiology Laboratory, Island Health, Providence Health Care, Powell River Hospital, St. Paul's Hospital, Vancouver General Hospital, Victoria General Hospital, BCCDC Public Health Laboratory, Interior Health Authority sites and Northern Health Authority sites.

Delays in the reporting of data may cause data to change retrospectively. Due to these delays, the sum of weekly report totals do not add up to cumulative totals.

For British Columbia, only data from subtyped influenza A specimens are included in the weekly number of influenza detections. The sum of A(H1N1)pdm09, A(H3), and A(UnS) positive results may not equal the sum of total Flu A positive results.

Due to different testing protocols of laboratories across Canada, influenza A subtype detection counts may not be included in total influenza A detection counts, as some subtype detections are not available through routine testing but are subsequently reported if further subtype testing is conducted. In these instances, subtype counts do not reflect influenza A detections intended to be captured by routine surveillance, and are excluded from total detections and percent positivity.

**Figure 2: Number of positive respiratory virus tests reported by participating laboratories in Canada by surveillance week**

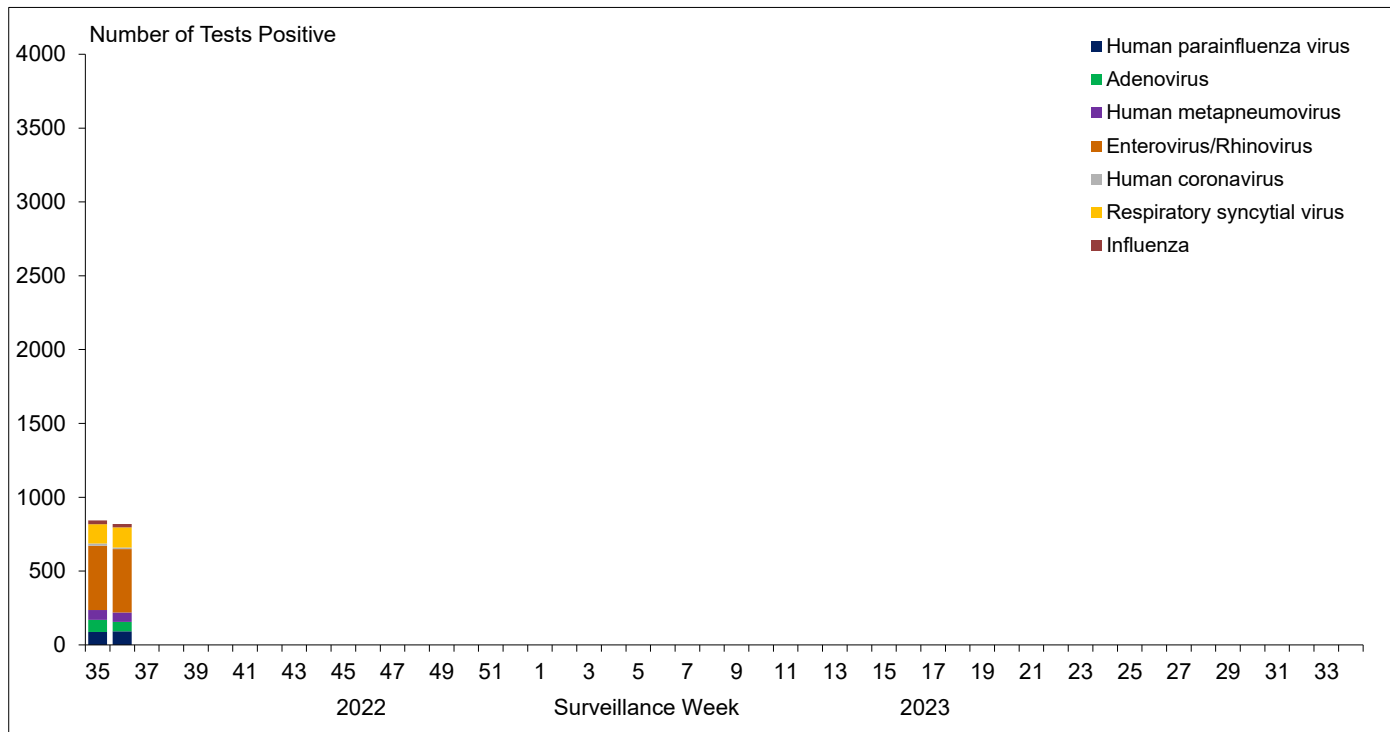


Figure 3: Positive Influenza (Flu) tests (%) in Canada by region by surveillance week

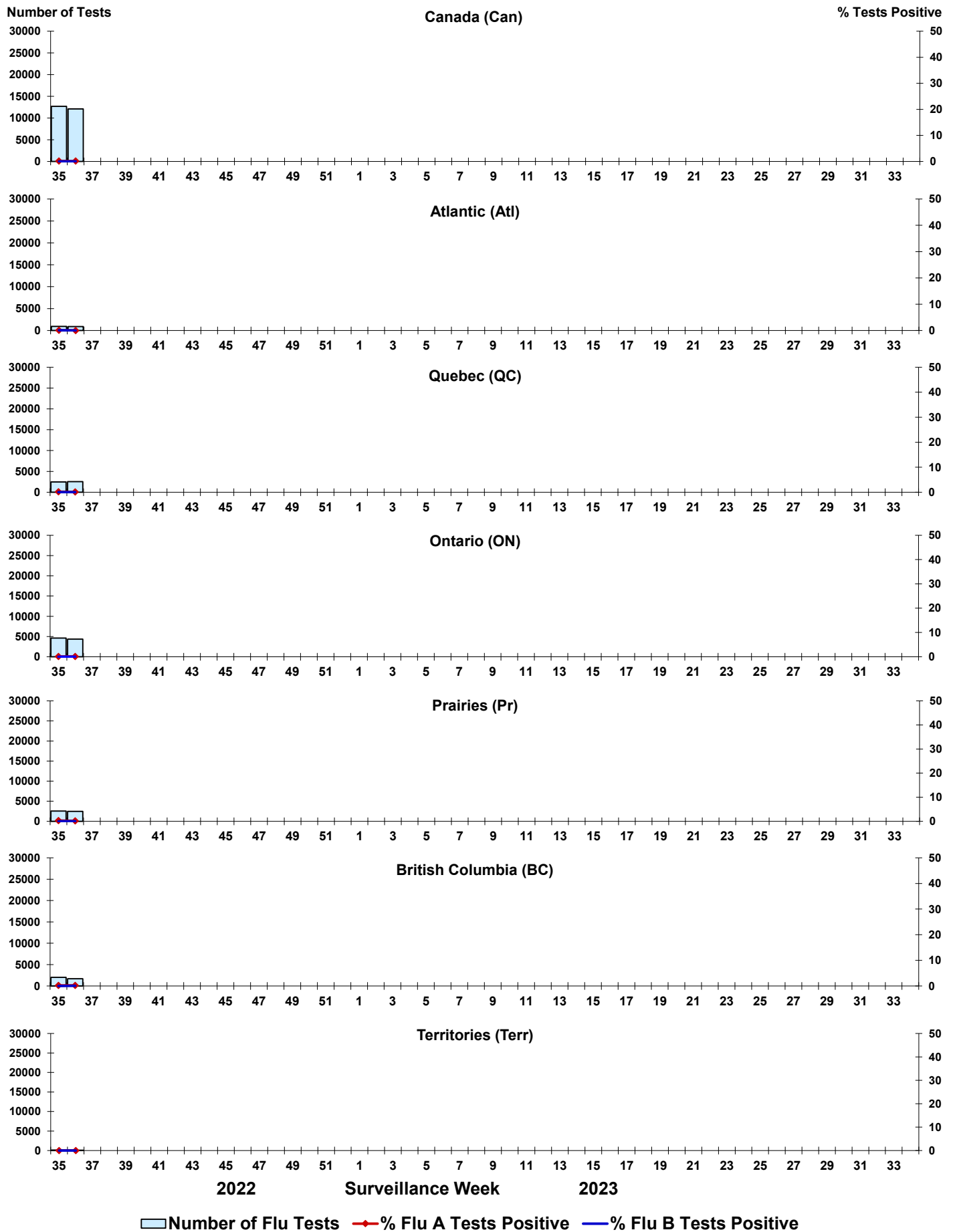


Figure 4: Positive Respiratory syncytial virus (RSV) tests (%) in Canada by region by surveillance week

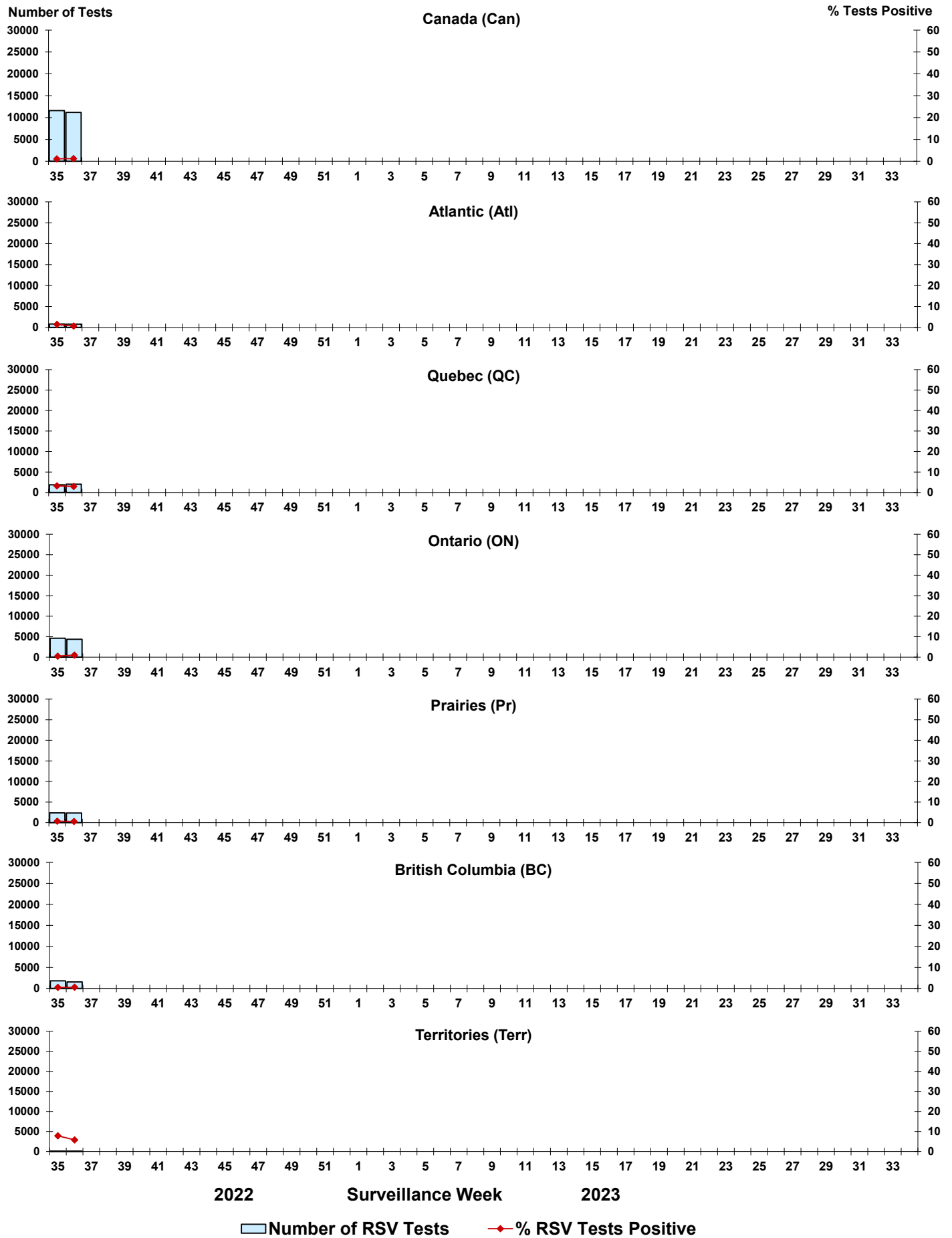


Figure 5: Positive Human parainfluenza virus (HPIV) tests (%) in Canada by region by surveillance week

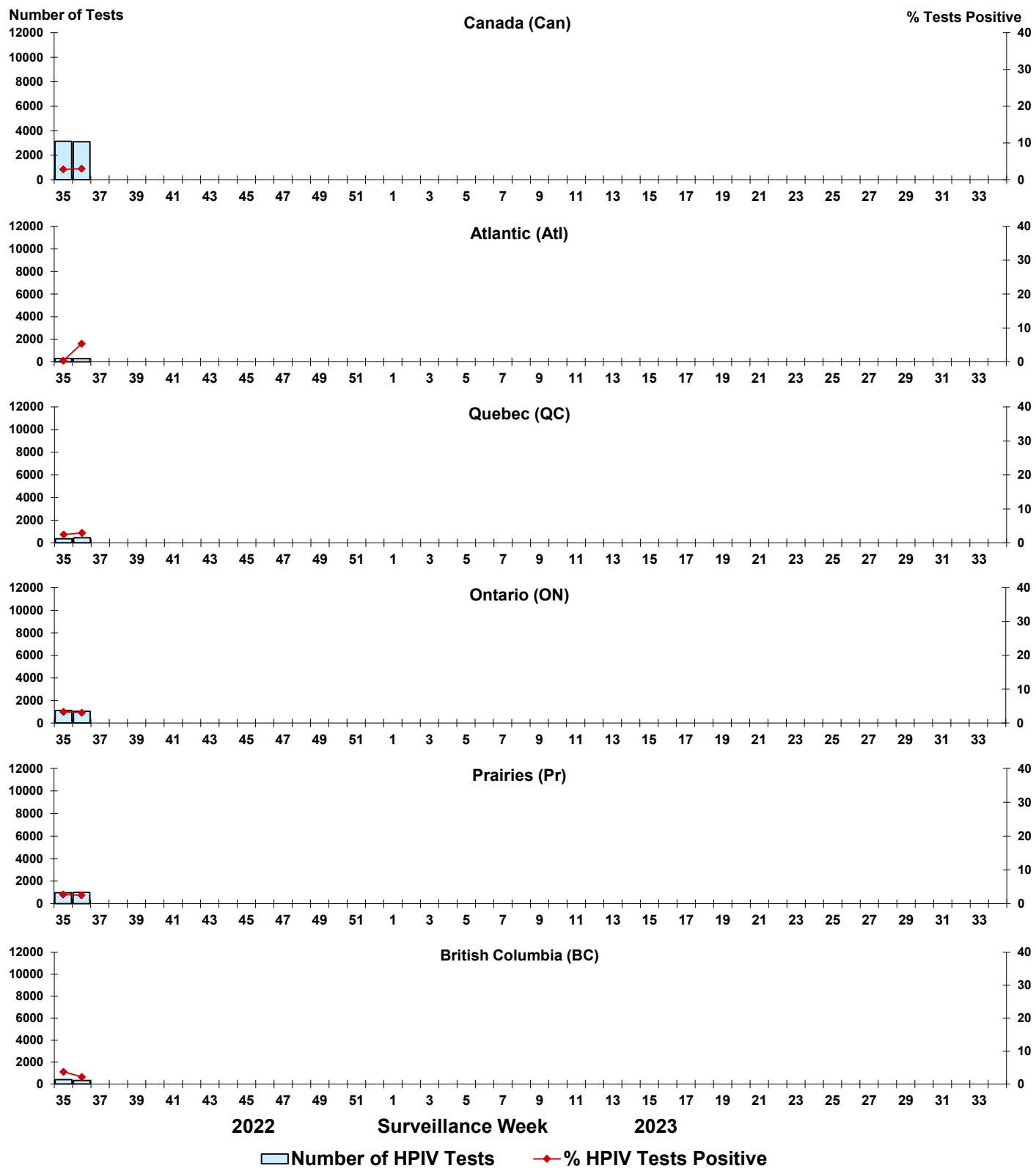




Figure 6: Positive Adenovirus (ADV) tests (%) in Canada by region by surveillance week

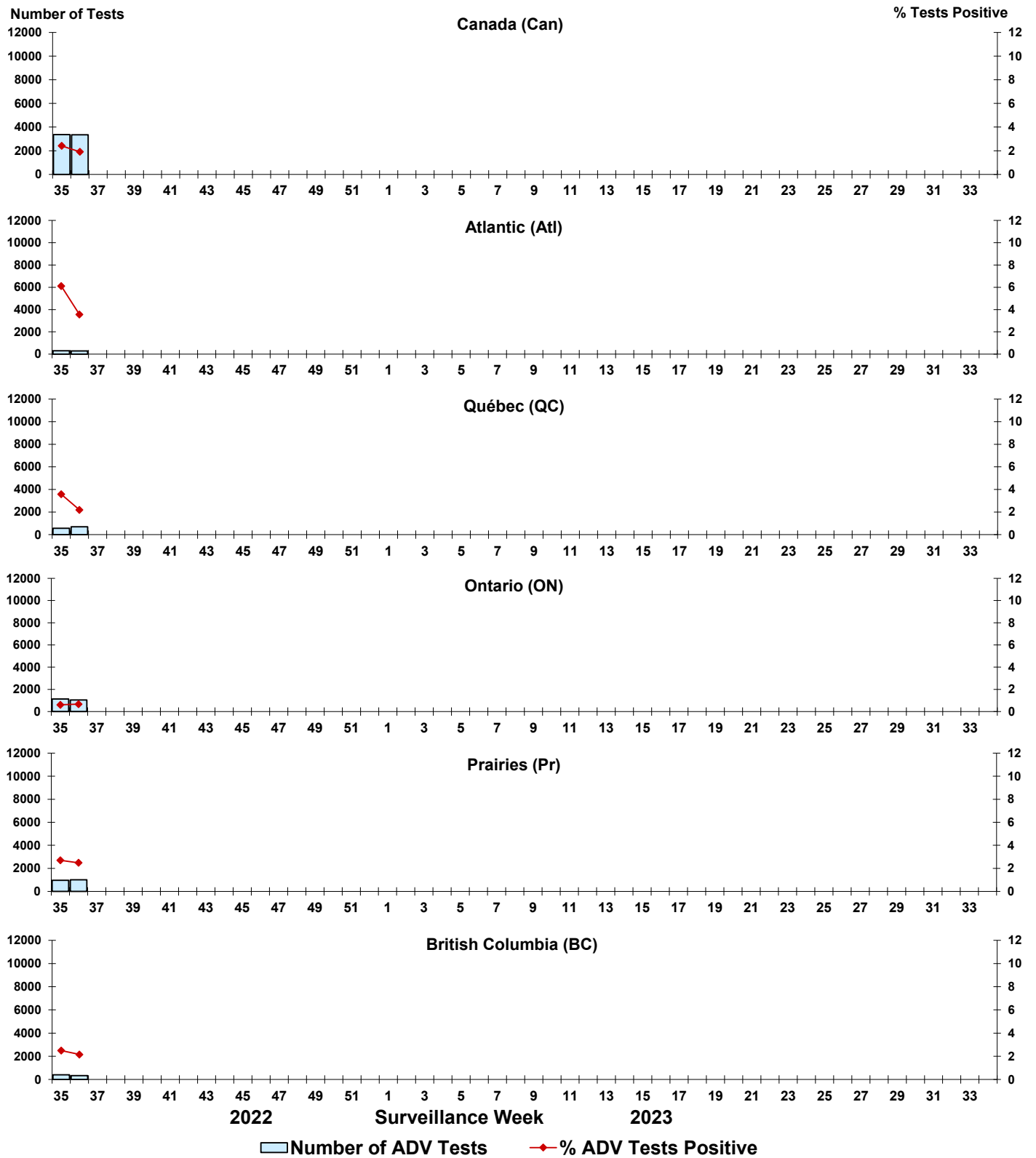


Figure 7: Positive Human metapneumovirus (HMPV) tests (%) in Canada by region by surveillance week

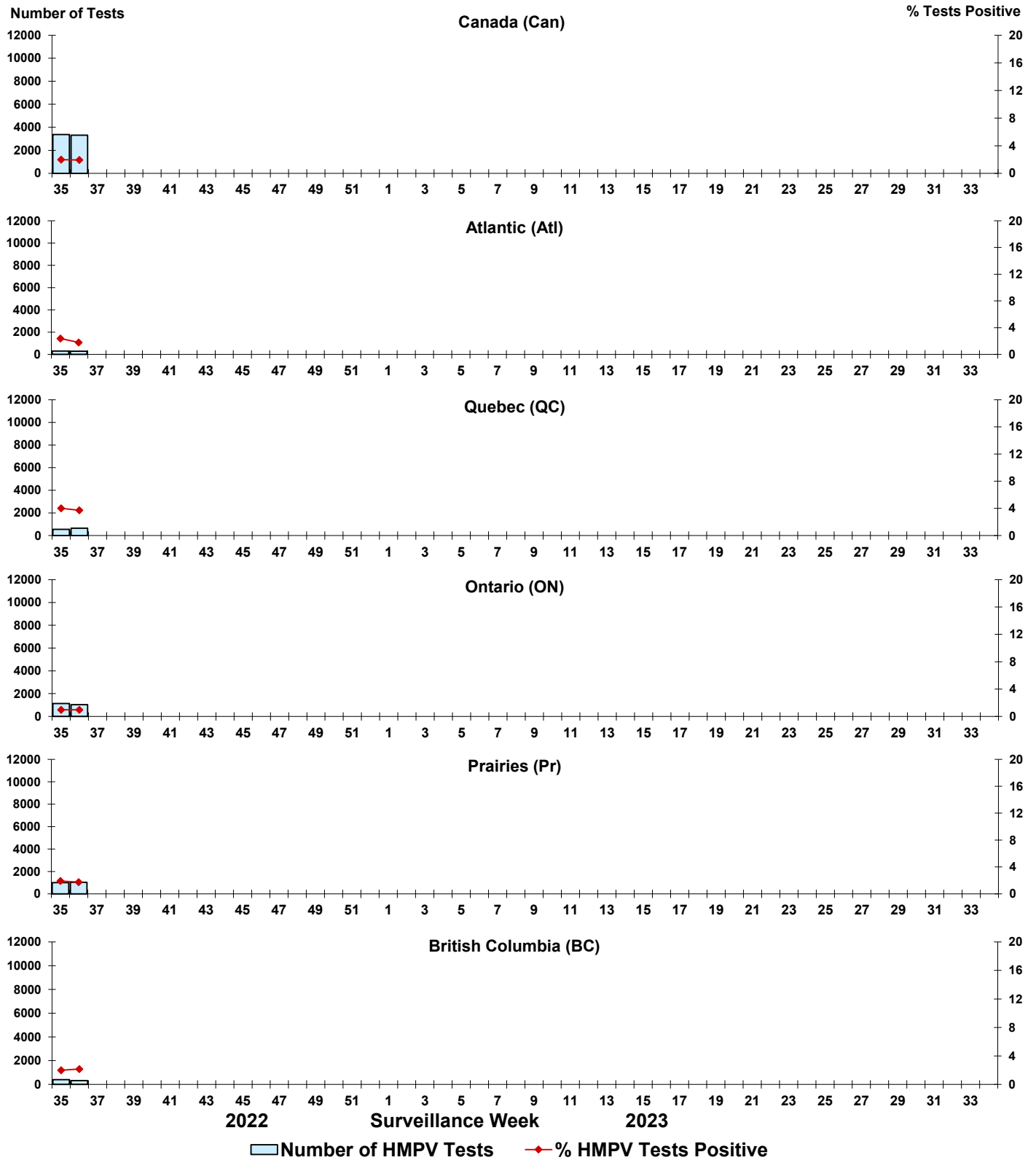


Figure 8: Positive Enterovirus/Rhinovirus (EV/RV) tests (%) in Canada by region by surveillance week

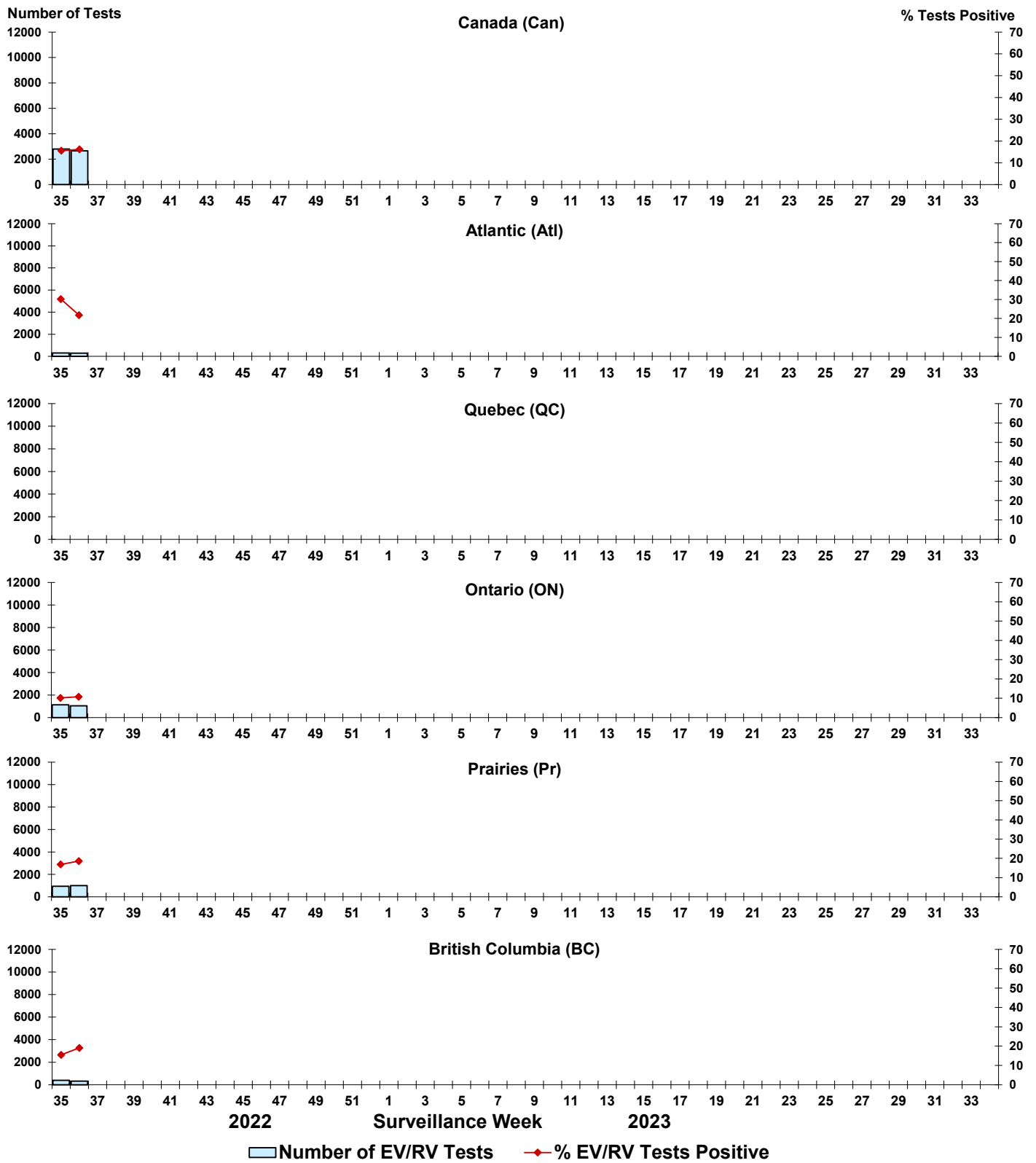


Figure 9: Positive Human coronavirus (HCoV) tests (%) in Canada by region by surveillance week

